

The impact of containment measures and air temperature on mitigating the transmission of COVID-19: a novel data-based comprehensive modeling analysis

Di Liu ^{*,1}, Qidong Tai ^{*,2}, Yaping Wang ³, Miao Pu ³, Sikai Ge ⁴, Tingting Ji ⁵, Lei Zhang ^{†,2}, Bo Su ^{†,1}

*: Contributed equally

†: Joint correspondence authors

¹: Central Laboratory, Shanghai Pulmonary Hospital, Tongji University School of Medicine, Shanghai, PR China (D Liu PhD, Prof B Su PhD).

²: Department of Thoracic Surgery, Shanghai Pulmonary Hospital, Tongji University School of Medicine, Shanghai, PR China (Q Tai MD, Prof L Zhang MD).

³: Public Health and Preventive Medicine, Tongji University School of Medicine, Shanghai, PR China (Y Wang MSc, M Pu MSc).

⁴: Division of biostatistics, School of public health, University of Minnesota, Minneapolis, Minnesota, USA (S Ge MSc).

⁵: Department of Liver Disease, The Second Hospital of Nanjing Southeast University School of Medicine, Nanjing, PR China (T Ji MD).

Correspondence to:

Prof Bo Su, Central Laboratory, Shanghai Pulmonary Hospital, Tongji University School of Medicine, Shanghai, PR China. su_bo_s@hotmail.com; Prof Lei Zhang, Department of Thoracic Surgery, Shanghai Pulmonary Hospital, Tongji University School of Medicine, Shanghai, PR China. ZHANGLEI_FKYY@163.COM;

Keywords: coronavirus disease; non-pharmaceutical Interventions; physical distance; social distance; epidemiological survey; hospitalization; asymptomatic; temperature; mathematical model

Abstract

Background

The COVID-19 is spreading worldwide, early non-pharmaceutical Interventions (NPIs) is crucial for mitigating COVID-19 epidemic. We aim to evaluate the impact of containment measures and the epidemic features of COVID-19 under social NPIs in Mainland China.

Methods

Under the effective social NPIs, the spreading pattern of COVID-19 in China has changed into mostly clustered intra-household or intro-acquaintance transmission, and we established a stochastic NPIs model, named ScEIQRsh to fit the epidemic and NPIs data of each province in China.

Results

This ScEIQRsh model could be well fitted with both the reported number of accumulative confirmed cases and epidemiological survey (EPS)-based quarantined cases of each province in China. We found that the median transmission rate of COVID-19 among acquaintances was 10.22 (IQR 8.47, 12.35) across Mainland China and the COVID-19 spreading was prevented by NPIs implementation within 25-30 days. Among NPIs, measures to diminish contactable susceptible (Sc), such as staying home, travel constraint *etc.* and measures to avoid delay of diagnosis and hospitalized isolation (η) were more effective than EPS-based quarantine (κ, ρ or surveyQ). Upon the fitted models, the proportion of asymptomatic infectors was determined to be 14.88% (IQR 8.17%, 25.37%). The median incubation period and communicable period of COVID-19 under NPIs were 4.16 (IQR 3.60, 4.71) and 6.77 (IQR 4.53, 10.36) days respectively, and the median time from exposed to being contagious was 2.39 (IQR 2.26, 2.56) days. Besides, we identified that the optimal temperature for COVID-19 spreading was in the range of 5°C-14°C.

Conclusion

This study provided useful suggestions about NPI strategy for the prevention of COVID-19 spreading, which should be helpful for the control of COVID-19, as well as other similar infectious disease.

Introduction

A novel coronavirus disease of 2019 (COVID-19) is spreading worldwide since January 2020 and has become a global health threat. World Health Organization (WHO) has designated this novel coronavirus as SARS-COV-2^{1,2} and declared it as a pandemic on March 11, 2020³. As of May 6, 2020, there are a total of 3641847 accumulative confirmed cases in 213 countries and 84407 accumulative confirmed cases in China. During the spreading of COVID-19 in Mainland China in February 2020, integrated social interventions including lockdown of high epidemic areas, physical and social distancing, quarantine, and isolation were undertaken to prevent the COVID-19 spreading⁴. The effectiveness of NPIs has been proved in some infectious diseases, like influenza⁵⁻⁷ and SARS⁸. The NPIs are vitally important especially for COVID-19, because of the so fast spreading and the subsequent insufficiency of health-care resources leading to high mortality⁹. Besides the announcement of keeping physical and social distance to the public, epidemiological survey (EPS) -based quarantine and hospitalized isolation were widely implemented in all the provinces of Mainland China after the lockdown of Hubei province on the Jan 23, 2020 in emergency. Almost all the provinces were in semi-closure and executed with community closed management, meanwhile multiple provincial EPS groups were established to notify the close contacts to be in quarantine at home or indicated shelters. And for the suspected and diagnosed COVID-19 patients, early detection, early reporting, early isolation and early treatment were adopted according to the Chinese Clinical Guidance for COVID-19 Pneumonia Diagnoses and Treatment version 6¹⁰.

Under the effective social NPIs, the spreading pattern of COVID-19 in most provinces of China was characterized of clustered or intra-family transmission¹¹ and mitigation by EPS-based quarantine¹². To mimic the early spreading and early social intervention, we established a novel epidemic model, named ScEIQRsh (contactable Susceptible-Exposed-Infected-Quarantined-Removed) model to depict COVID-19 spreading in China. The classical SIR or SEIR (Susceptible-Exposed-Infected-Removed) epidemic model assumes that infectors mix up with all the susceptible per day, whereas ScEIQRsh model assumes that infectors mix up with the contactable susceptible per day. The contactable susceptible indicates the family members, relatives, co-workers, friends and some contactable strangers of the infectors. Several studies assessed one single aspect of NPIs, such as travel restriction^{13, 14}, airport screening^{15, 16}, social distance¹⁷, and

contact tracing¹⁸ by classical SEIR based model without consideration of the other NPIs' influence on the transmission property of COVID-19. We aim to estimate the effectiveness of integrated NPIs to simulate COVID-19 restricted spreading in the 31 provinces of Mainland China.

With the NPIs taken into account, the other clinical features, such as incubation period, the communicable period and the proportion of so-called asymptomatic infectors of COVID-19 were evaluated by this comprehensive model. The meteorological impact on COVID-19 transmission was still controversial^{19, 20}, and with this new ScEIQRsh model, we depicted the association of air temperature with COVID-19 transmission rate (β) among the provinces of China.

Methods:

Development of a COVID-19 dynamically epidemiological model

We established a comprehensive stochastic NPI model, including keeping physical and social distance, EPS-based quarantine of exposed people and hospitalized isolation of infectors to simulate the epidemiological data of COVID-19 spreading across provinces in Mainland China from January 2020 to March 2020. The developed ScEIQRsh model contains six compartments named as Sc (contactable susceptible), E (people exposed to SARS-COV-2), Q (EPS-based close contacts being in quarantine), I (infectors outside of the healthcare system), Rh (accumulative hospitalized infectors), and Rs (self-recovery individuals with asymptomatic infection or mild symptoms who have never be hospitalized and registered in healthcare system) (figure 1). Sc represents the contactable susceptible under the social NPIs, such as keeping physical and social distance, cancelling gatherings, closing public places, which is set as a random variable in the model. Q reflects the EPS-based quarantine, and Rh reflects the isolation of confirmed and hospitalized infectors. E, I, and Rs compartments were outside of the intervention. The model can be mathematically described as 5 differential equations (details in the supplementary method).

ScEIQRsh Epidemiological Model

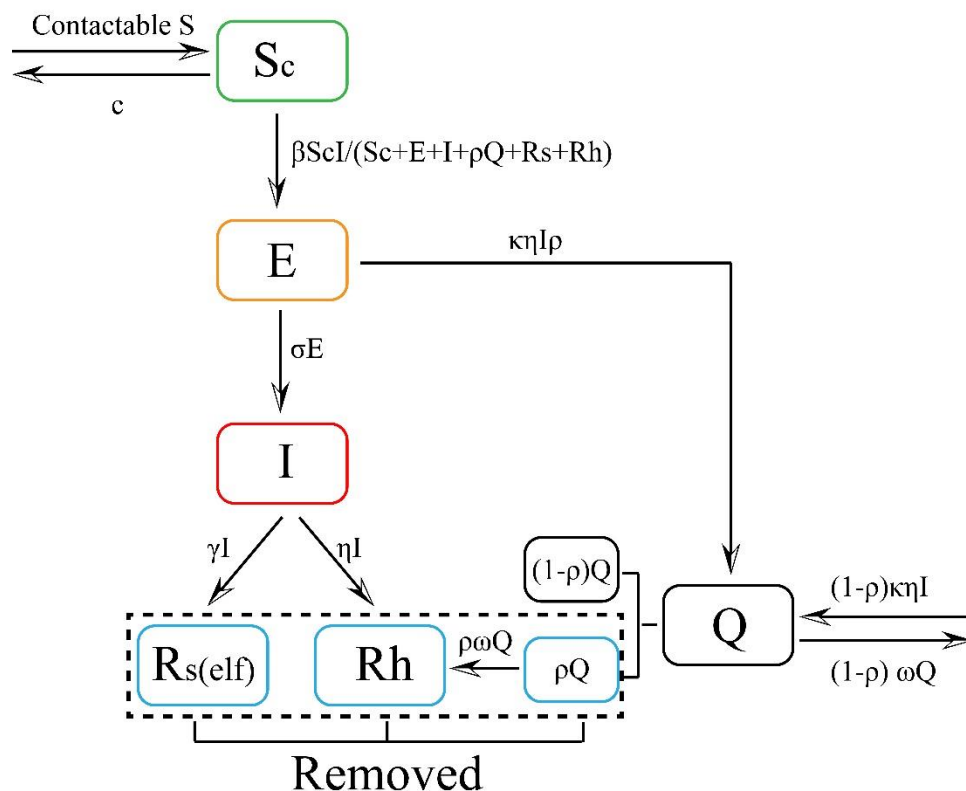


Figure 1. Flow diagram of ScEIQRsh epidemiological model

Six compartments: contactable susceptible (S_c), exposed individuals (E), infected individuals who were outside of the public health measures (I), EPS-based close contacts being in quarantine (Q), self-recovery individuals (R_s) and the cumulative hospitalized individuals (R_h). The flow velocities between the compartments are indicated.

Parameters in ScEIQRsh model

The definition and initial range of model parameters of β , σ , γ , κ , ρ , ω , η and S_c in the model were listed in table 1. β was the transmission rate dependent of the property of SARS-COV-2. σ and γ were associated with the intrinsic incubation period and communicable period of COVID-19. κ , ρ and ω were associated with EPS. η reflected the velocity of hospitalized isolation for infectors. Other indexes could be calculated from the solved model, such as the contact rate (c), the quality of EPS (survey Q), the incubation period and communicable period of SARS-COV-2, and the proportion of untraceable infectors (approximately equate to the asymptomatic) (utI%, or Asym%). Among them, c reflects the proportion of S_c in population under the integrated NPIs,

surveyQ represents the quality of EPS. Rvq is defined as the ratio of transmission velocity to remove velocity when Q reached the apex, which is used to evaluate the overall effectiveness of integrated NPIs (supplementary method).

Table 1. The definition and setting range of parameters in ScEIQRsh model

Parameters	Definition	Method	Setting range
Sc	contactable susceptible under the social NPIs	MCMC	[1, 0.01N]
β	transmission rate, the number of infected people by one infector	MCMC	[1,19]
σ	transition rate from exposure to being contagious	MCMC	[0.27,0.5]
γ	recovery rate of asymptomatic infector	MCMC	[0.04,0.3]
η	hospitalization rate and pace of symptomatic infectors	MCMC	[0.001,0.999]
κ	extent of epidemiological investigations	MCMC	[0,350]
ρ	positive rate of COVID-19 in quarantined people	MCMC	[0,0.1]
ω	transited rate of quarantined people developing to contagious per day	MCMC	[0.07,0.6]
c	the proportion of contactable susceptible (Sc) under the interventive social prevention	Sc/N	-
Rvq	ratio of transmission velocity to remove velocity when Q reached the max	-*	-
Ipd	the time elapsed from exposure to SARS-COV-2 to the symptoms firstly apparent	$1/\sigma+1/\eta$	-
Asym%	the proportion of untraceable infectors, approximately equates to the asymptomatic	$\gamma/(\eta+\kappa\rho\eta+\gamma)$.	-
SurveyQ	the quality of epidemical survey	$\kappa\rho$	-
Cpd	the time for untraceable infectors with contagious among susceptible	$1/\gamma$	-

Abbreviation: Ipd: Incubation period; Cpd: communicable period; Asym%: Proportion of asymptomatic infectors; N: the total population of a province. * Details in the supplementary methods

Data and modelling fitting

We collected daily accumulative confirmed cases and EPS-based close contacts being in quarantine of COVID-19 from January to March, 2020 through the 31 Provincial Health Commission in China. Xizang and Qinghai province were excluded because of few cases, with only one and 18 confirmed cases, respectively. Almost all the diagnosed cases were hospitalized in isolation wards simultaneously according the Guidance, thus the reported confirmed cases were just the hospitalized infectors in China. Details of the criteria of confirmed and quarantined cases were clarified in the supplementary method. We fitted both the accumulative confirmed cases and EPS-based quarantined cases with Rh and Q compartments by ScEIQRsh model for each province. The value of parameters was random sampled with one of Markov Chain Monte Carlo (MCMC) method, Metropolis-Hastings (M-H) algorithm, and documented under an appropriate tolerance of

best fitting with at least 100000 iterations of 0.1 step size from 0 to 60 days with burn-in of 50000 iterations in every province of Mainland China.

Air temperature of provinces in China during the COVID-19 spreading

The minimum, mean, maximum air temperature of each province was collected from the National Meteorological Administration from Jan 15, 2020 to Feb 15, 2020 (one week before and three weeks later of Jan 22, 2020 (Day 0)). The LOESS regression was used to depict the relationship between the air temperature of 29 provinces and the transmission rate of COVID-19 in ScEIQRsh model.

Statistical analysis

The enrolled 29 provinces were separated into seven geographical regions, named as North, Northeast, East, Central, Northwest, South and Southwest China. Both curves of R_h and Q was simultaneously fitted with the raw data by least squares method with tolerance of 1.05, and the cost function was SSE/SST (Sum of Squares for Error/Sum of Squares for Total). The proposal distribution for accept-reject in M-H algorithm is a Bernoulli distribution from the comparison of cost function of curve fitting in iteration. The data process was performed on R (version 3.6.1), and the “deSolve” R package was used as the solver of differential equations. The R source code can be found in *GitHub*. The parameters were denoted as mean \pm SD for each province, and the median (interquartile range, IQR: 25%, 75%) of parameters was used for depicting the situation across Mainland China.

Results

Slowdown of COVID-19 transmission under integrated social NPIs in China

The ScEIQRsh model can be well fitted with both daily accumulative confirmed and EPS-based quarantined cases simultaneously in 29 provinces of China (figure 2, figure S1). The predicted daily R_h and Q compartments were coincident with the provincial reported number of cumulative confirmed and EPS-based quarantined cases. From the fitting curves, the accumulative confirmed cases reached the plateau and stop increasing within 25-30 days, which indicated that the COVID-19 transmission was prevented after emergency response to COVID-19 in all provinces of Mainland China. The median of transmission rate (β) for 29 provinces were 10.22

(IQR 8.47, 12.35), which implied about 10.22 person would be infected by one infector in case that the susceptible are mostly acquaintances and S_c is extrapolated to infinite (table 2, supplementary table, figure 3A). The index for overall assessment of NPIs effectiveness, R_{vq} , was smaller than 1 in every province with a median of 0.64 (IQR 0.62, 0.66), which demonstrated that implemented NPIs was intensive enough to make the number of free infectors decrease (figure 3B). The smallest R_{vq} (0.53 ± 0.02) and largest R_{vq} (0.75 ± 0.02) was observed in Shandong and Hubei province (Wuhan locates on), respectively, which implied the difficulty of NPIs with greater burden of EPS-based quarantine if the spreading has expanded with too many infectors in Hubei.

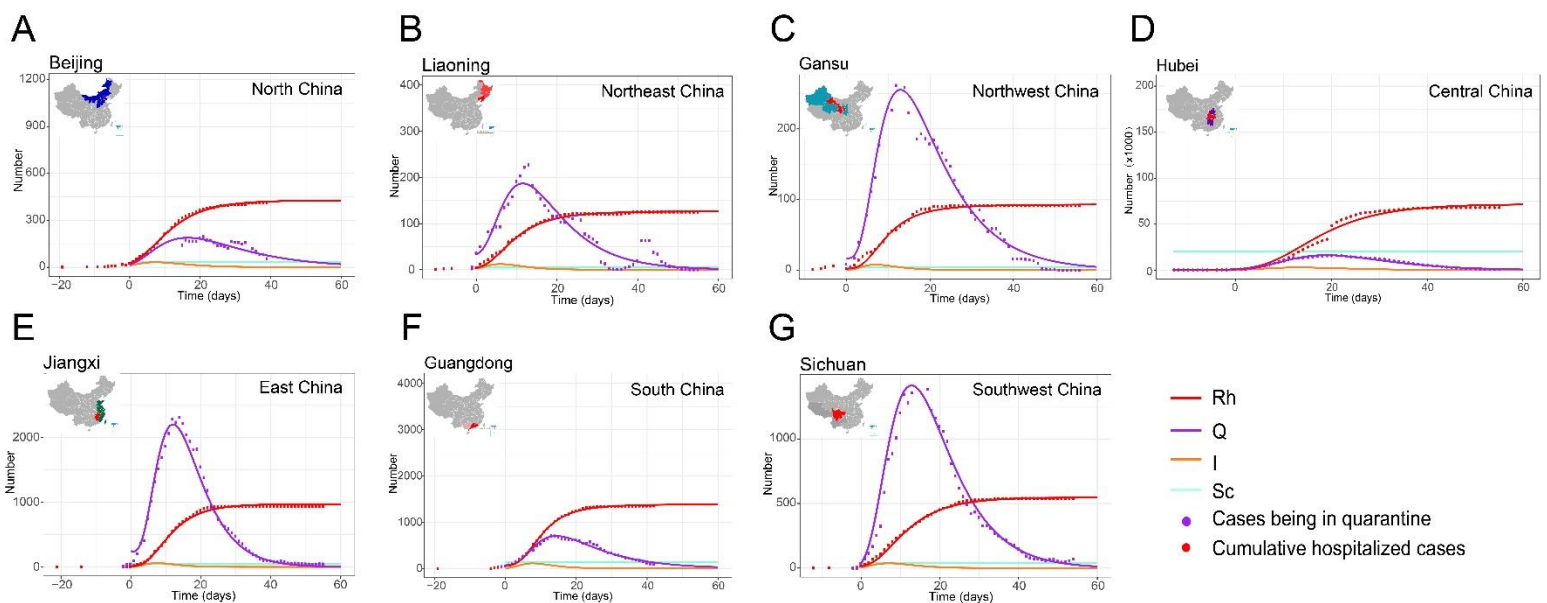


Figure 2. The representative fitting curves of both cumulative confirmed cases and EPS-based close contacts being in quarantine in provinces of Mainland China.

A-B: The fitting curves of Beijing (North China) and Liaoning (Northeast China).

C-D: The fitting curves of Gansu (Northwest China) and Hubei (Central China).

E-F: The fitting curves of Jiangxi (East China) and Guangdong (South China).

G: The fitting curve of Sichuan (Southwest China).

Table 2. The median value of parameters and indexes across 29 provinces of Mainland China by the fitted ScEIQRsh model.

Variables	Median	IQR 25%, 75%	Range
β	10.22	8.47, 12.35	3.29-15.06
σ	0.42	0.40, 0.44	0.33-0.48
γ	0.15	0.10, 0.22	0.05-0.26
η	0.69	0.47, 0.87	0.16-0.97
κ	42.0	27.83, 60.78	5.35-147.79
ρ (%)	0.9%	0.4%-1.6%	0.03%-5.10%
ω	0.12	0.10, 0.15	0.07-0.21
Sc	26.98	13.97, 54.57	5.91-25525.54
c	6.84E-07	3.77E-07, 1.44E-06	1.64E-07—4.33E-04
Rvq	0.64	0.62, 0.66	0.53-0.75
Ipd	4.17	3.60, 4.71	3.27-9.62
Asym%	14.88%	8.17%, 25.37%	3.92%-34.36%
SurveyQ	0.39	0.22, 0.55	0.04-2.61
Cpd	6.77	4.53, 10.36	3.91-19.90
1/ σ	2.39	2.26, 2.56	2.07-3.01

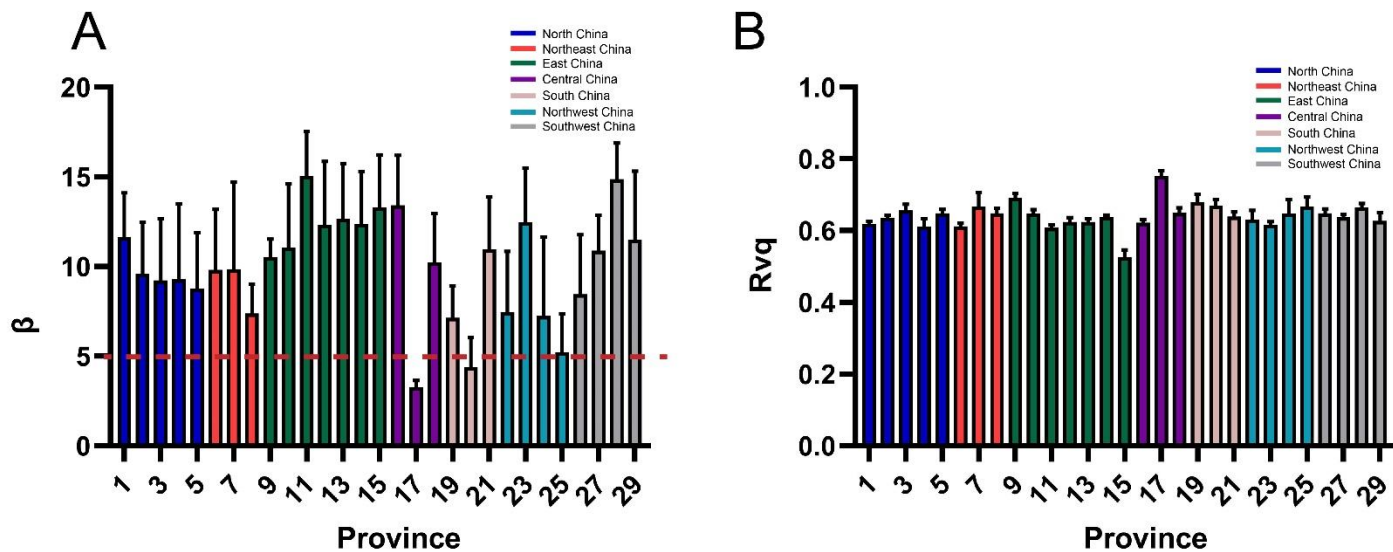


Figure 3. The transmission rates of COVID-19 and R_{vq} for 29 provinces in the fitted ScEIQRsh model.

In Figure A and B, the number on the X axis represents the provinces of each geographical region. North China: 1-5; Northeast China: 6-8; East China: 9-15; Central China: 16-18; South China: 19-21; Northwest China: 22-25; Southwest: 26-29.

A. The transmission rates of COVID-19 among acquaintances for the 29 provinces grouped by geographical regions.

B. The mean value of R_{vq} in the 29 provinces. If $R_{vq} < 1$, the intensity of non-pharmaceutical-intervention is enough to stop propagating of infectors, the infectors will decrease.

Assessment of NPI measures mitigating the spreading of COVID-19 and suppositional simulation

Three independent parameters, contact rate (c), surveyQ and η , were crucial for stopping the spreading chain and evaluated separately for NPIs effectiveness. Based on our model, the median Sc was estimated as 26.98 (IQR:13.97, 54.57) with the highest in Hubei and lowest in Neimenggu province (supplementary table 1). The median c for 29 provinces was accordingly $6.84E-07$ (IQR $3.77E-07$, $1.44E-06$) (figure 4A). The κ and ρ can be used to assess EPS effectiveness, and the median κ of 29 provinces was 42.0 (IQR 27.83, 60.78), suggesting that 42 close contacts of one infector had been excavated averagely by EPS (figure S2A). The COVID-19 positive rate (ρ) in quarantined close contacts was speculated as 0.98% (IQR 0.47%-1.60%), ranged from 0.03%-5.10% (figure S2B), which was quite close to the WHO-China joint report of 0.9%-5% in China¹². SurveyQ, the product of κ times ρ , was 0.39 (IQR 0.22, 0.55), which indicated that 0.39 positive cases were found in EPS-based close contacts averagely for each confirmed infector (figure 4C). The median for velocity of hospitalized isolation for infectors (η) was 0.69 (IQR 0.47, 087) among 29 provinces, with η value greater than 0.85 in Jilin, Heilongjiang, Shanghai, Jiangsu, Hubei, Hunan, Guangxi and Guizhou province (figure 4B).

To illustrate the influence of NPI parameters on COVID-19 transmission for ScEIQRsh model, we arbitrarily adjusted Sc (c), κ , ρ , and η value with representative 30% or 50% up/down-regulation to simulate the suppositional spreading situation. If Sc (c) were 30% or 50% enlarged or η reduced, the eventual accumulative hospitalized cases (R_h) would strongly increase, the peak of infectors (I) would be brought backward and vice versa (figure 4D-4G). In case of enlarged κ or ρ , the eventual accumulative number of confirmed COVID-19 would diminish and the plateau of R_h would be brought forward (figure 4H-4I, figure S2C-S2F). On the same adjusted amount, the effectiveness of Sc (c) and η on spreading prevention were stronger than that of EPS parameters, κ and ρ .

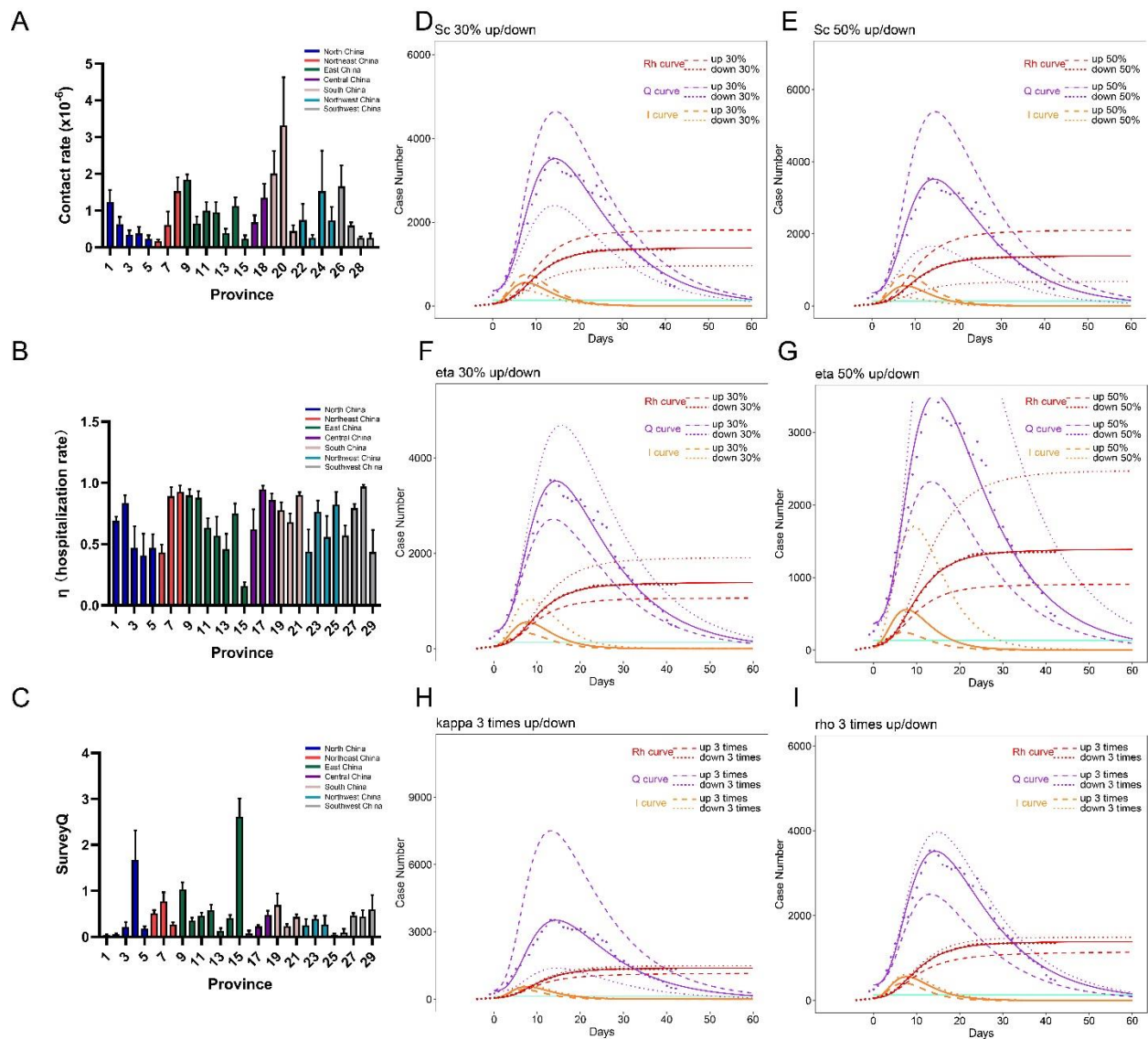


Figure 4 . Evaluation of effectiveness for the 3 categories of NPI measures to mitigate COVID-19 spreading and suppositional simulation

A: The contact rates (Sc/N) were smaller than 4×10^{-6} in 28 provinces except Wuhan. D-E: The simulated Rh, Q and I curves were sketched when adjusted contact rate with 30% or 50% up/down- regulation.

B: The hospitalization rate and pace, η of the 29 provinces. F-G: The influence on Rh, Q and I curves after adjustment of η with 30% or 50% up/down- regulation.

C: The quality of epidemiological survey, surveyQ was different among 29 provinces. H-I: The influence on Rh, Q and I curves after adjustment of κ and ρ to 3 times or 1/3.

Blind zone of EPS-based quarantine and asymptomatic infectors in NPI strategy of China

With the integrated social NPIs, COVID-19 transmission mostly occurred between free infectors and acquaintances, as well as a few strangers whom the infectors have to contact for daily necessities in China. In a typical clustered intra-acquaintance transmission, the index case transmitted to four of his family members and one friend directly, and the friend's family indirectly within half a month²¹ (figure 5A). After emergency response, multiply provincial EPS group were established to investigate the contact history of each confirmed infectors and notified the close contacts to be in self-quarantine at home or in shelters. EPS can easily find close contacts of acquaintances, but be inefficient in finding transmission among strangers in public space. For example, a salesman index transmitted to two unacquainted salesmen in other sales' area sequentially without gathering in a large mall, and a customer without any inquiry and purchase was infected by one of the transmitted salesmen after 30-minutes lingering (figure 5B). This transmission chain in strangers could not be easily found by contact tracing in EPS, and was only revealed after all the participants appeared symptoms (Figure 5C).

Another blind spot of EPS-based quarantine is about asymptomatic infection. Rs compartment in the ScEIQRsh model consists of the self-recovery individuals who have never be hospitalized and not registered in healthcare system mostly because of asymptomatic infection or mild symptoms. The calculated proportion of asymptomatic and mild-symptom infectors without hospitalization (untraceable infectors, utI%) by ScEIQRsh model was 14.88% (IQR 8.17%, 25.37%), ranged from 3.92%-34.36% across 29 provinces, which signified that average 14.88% COVID-19 patients couldn't be found out with social NPIs, and the average proportion of asymptomatic in COVID-19 patients should be smaller than 14.88% (IQR 8.17%, 25.37%) (Figure 5D). The higher surveyQ in EPS can only reduce but not eliminate utI% (figure 5E), but high η could decline the utI% constantly (figure 5F). Hence, EPS-based quarantine is not sufficient to find all the infectors, especially in stranger-stranger transmission and asymptomatic infection. An integrated NPI strategy is strongly recommended, as we earlier simulated, Sc (c) and η have stronger prevent effectiveness, which means staying at home to diminish contact, diagnosis and hospitalized isolation as soon as possible.

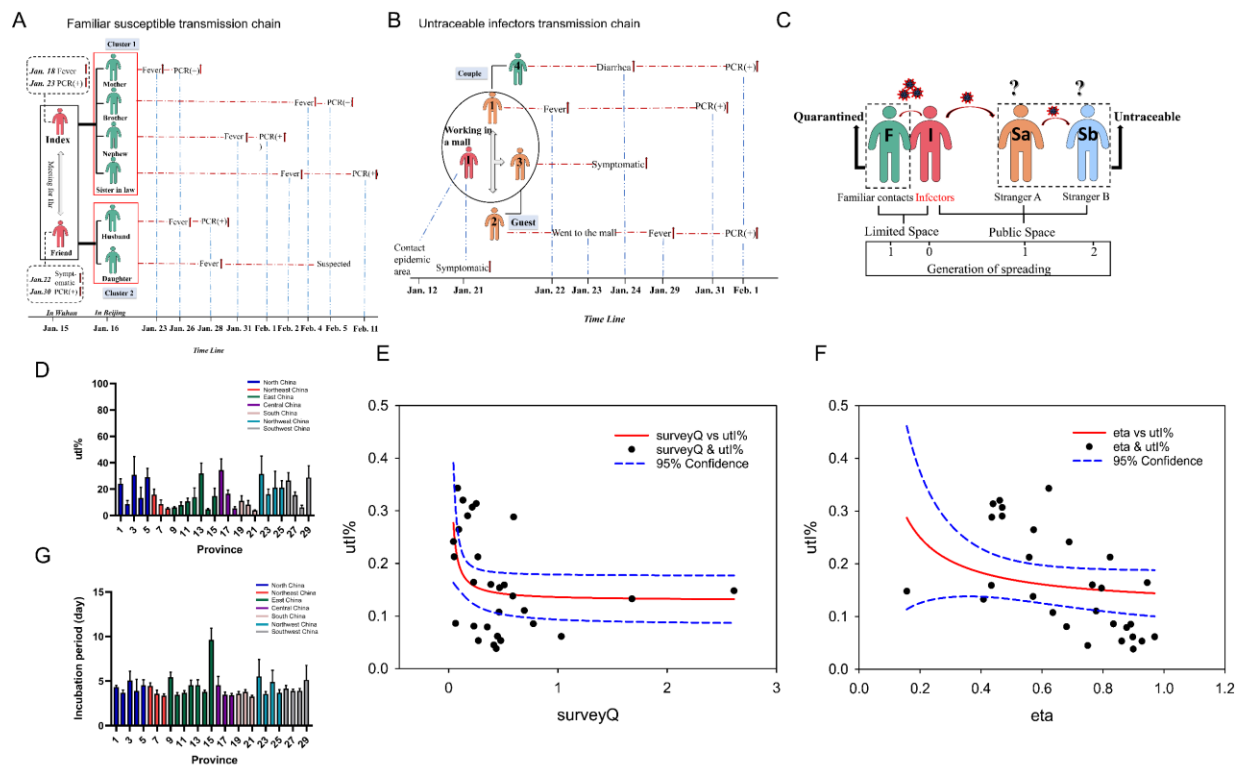


Figure 5. The transmission patterns of COVID-19 under social NPIs and the association of untraceable infectors with surveyQ/ η .

A: A representative example of intra-family and intra-acquaintance transmission pattern of COVID-19 in Beijing.

B: A representative example of COVID-19 transmission pattern among strangers in a large mall.

C: Stranger-stranger transmission is the blind zone of contact tracing.

D: The median proportion of asymptomatic infectors among 29 provinces.

E-F: The nonlinear association between the ration of untraceable infectors and survey / η . Higher η or surveyQ could reduce the ration of untraceable infectors. But as the η increasing, the proportion of untraceable infectors would be constant.

G: The median incubation period of COVID-19 among 29 provinces.

The incubation period and communicable period of COVID-19 in ScEIQRsh model

Computed with the fitted model, the median incubation period was calculated with sigma and eta (incubation period $\approx 1/\sigma + 1/\eta$), of 4.16 days (IQR 3.60, 4.71) (figure 5G). The communicable period of COVID-19 was infectious period related to asymptomatic and some mild-symptom infectors, with a median of 6.77 days (IQR 4.53,10.36) calculated as $1/\gamma$ (table 2). The median

time from individuals exposed to SARS-COV-2 to being contagious was 2.39 days (IQR 2.26, 2.56) determined by $1/\sigma$ (table 2).

The influence of air temperature on the transmissibility of SARS-COV-2

The span of mean air temperature for every province was from $-15\text{ }^{\circ}\text{C}$ ($5\text{ }^{\circ}\text{F}$) to $20.25\text{ }^{\circ}\text{C}$ ($68.45\text{ }^{\circ}\text{F}$) during the COVID-19 spreading period of Jan to Feb 2020 (figure 6A-6B). The nonlinear association between transmission rate β and air temperature was depicted by LOESS fitting. As the daily air temperature increased from below 0°C (32°F), the value of β raised gradually until the air temperature went up to a peak of 7°C (44.6°F) in daily minimum temperature, or 10°C (50°F) in daily mean temperature or 15°C (59°F) in daily maximum, temperature respectively (figure 6C-6E), and then declined sharply as the temperature continued to raise. We observed transmission rate β was higher than 11 in the range of 5°C - 14°C (41°F - 57.2°F) mean air temperature, which may be most suitable for COVID-19 spreading.

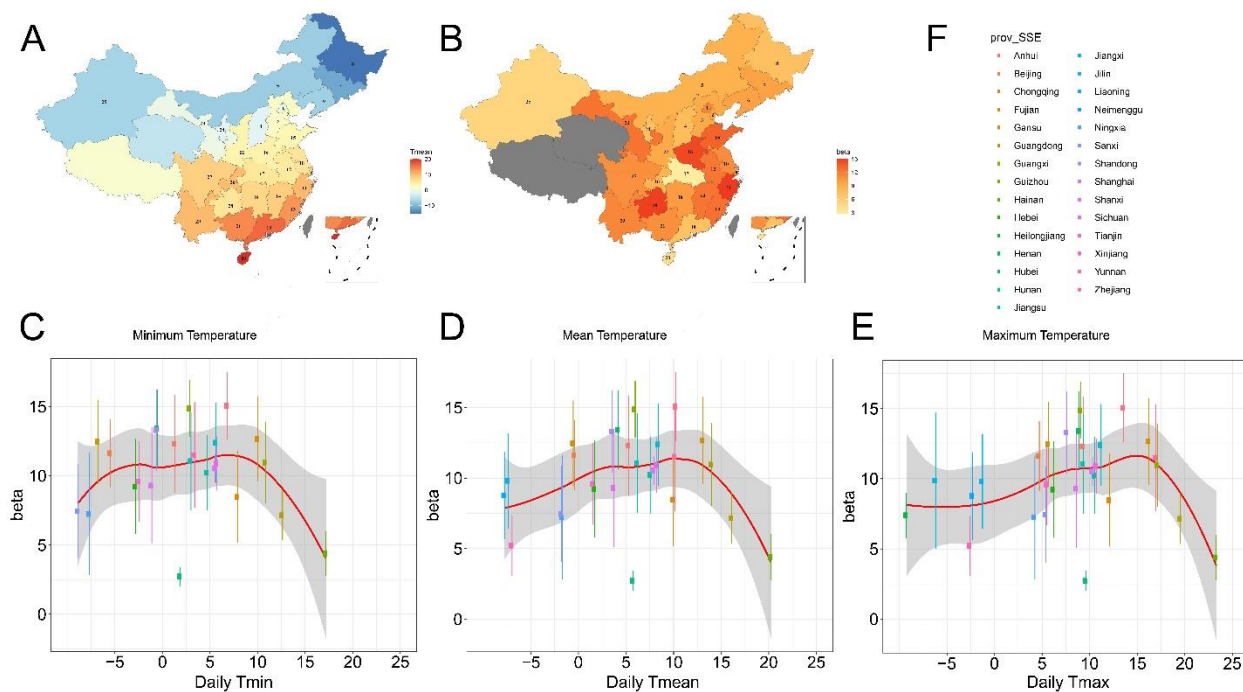


Figure 6 The impact of minimum, mean and maximum temperature on the transmission of COVID-19 in mainland China.

A: Mapping the daily mean temperature from the 15th, Jan, 2020 to the 15th,Feb, 2020 in 29 provinces.

B: Mapping the transmission rate of COVID-19 in 29 provinces.

C, D, E: The association between daily minimum (C), mean (D) and maximum (E) temperature and the transmission rate, β of COVID-19 depicted by LOESS, sharing similar shape of curves.

F: The legend for Figure C-E. One dot represents the minimum, mean or maximum temperature of one province.

Discussion

After first-level public health emergency response on the Jan 23, 2020, integrated NPIs in Mainland China during the epidemic of COVID-19 are as follows⁴: 1) lockdown of high epidemic areas including Wuhan; 2) extension of the Chinese Spring Festival to the Feb 2, 2020; 3) inter- and intro-province travel restraint; 4) closing public places, avoiding gatherings and staying at home; 5) environmental disinfection and personal protective measures including wearing masks; 6) physical and social distancing measures; 7) setting up provincial epidemiological survey groups and close contact tracing for each confirmed case or imported infector; 8) notification of close contacts to be in quarantine for 14 days at home or shelters; 9) identification of suspected COVID-19 in Cough and Fever Clinics; 10) hospitalized isolation for every confirmed case; 11) preventing healthcare-associated infections. Among them, 1-6 diminished S_c or c , 7-8 contributed to κ and ρ , 9-11 contributed to η in the ScEIQRsh model.

The classical SEIR based NPI model usually have to be staged to simulate the propagating stage and NPI stage separately, instead, ScEIQRsh model can well fit the realistic provincial epidemic and NPI data of COVID-19 in China entirely without halfway adjustment of the parameters. The assumption of ScEIQRsh model makes it a model to depict intra-acquaintance spreading pattern, and if S_c were replaced with all the susceptible, it could degenerate into classical SEIR model. A report of the “WHO-China Joint Mission on COVID-19” claimed that human-to-human transmission of COVID-19 largely occurred intra-family in China¹². In Guangdong and Sichuan province, about 78%-85% of clustered infections were within families¹². And in Beijing, there are 176 clustered cases among 262 confirmed cases and 133 (50.8%) were clustered intra-family cases¹¹. The implementation of effective social NPIs in Mainland China changed the spreading pattern of COVID-19 into intra-acquaintance spreading, in which acquaintance refers to the family members, relatives, friends and co-workers, as well as some contactable strangers for obtaining daily necessities. That’s the reason why ScEIQRsh model can perfectly fit both epidemic and NPI data of COVID-19 in China. Even the median transmission rate of COVID-19 among acquaintances was high as 10.22 (IQR 8.47, 12.35), the R_{vq} was still less than one, which implied

that the intensity of integrated NPIs taken by China was enough to prevent COVID-19 transmission.

According to the ScEIQRsh model, Sc (c) and η is more effective to diminish the eventual accumulative number of COVID-19 cases than EPS parameters κ and ρ . We can summarize the goal of measures 1-6 as “staying at home and going out with precautions” for the susceptible, and measures 9-11 as “diagnosis and hospitalized isolation as fast as possible” for infectors. In case of insufficiency of medical resources, the better way to improve η could be extension of SARS-COV-2 PCR detection among susceptible or building makeshift hospitals to increase bed capacity²². EPS-based quarantine is also helpful for mitigating COVID-19 spreading, which can be regarded as a reminder to be more precautionous for close contacts (a part of the susceptible) than the common susceptible. The surveyQ ($\kappa \cdot \rho$) of EPS could be improved with adding more EPS staffs, spanning the infectors’ contacted area, or performing SARS-COV-2 detection in all the close contacts. It is undeniable that above methods require more human and financial resources, and may not be suitable for every country in reality. In brief, keeping the contactable susceptible (Sc or c) in extremely low level and maintaining η in high level are crucial for COVID-19 control.

Additionally, a few clinical characteristics of COVID-19 were determined by our model. The asymptomatic infectors with contagiousness are potential bomb for recurrence of the COVID-19 epidemic. We demonstrated that the median and highest proportion of asymptomatic infectors were 14.88% and 34.36% respectively. It was consistent with the reported 30.8% asymptomatic cases in 565 Japanese citizens evacuated from Wuhan by Hiroshi Nishiura et al²³ and claim of 18% in 700 infectors never showed symptoms on *Diamond Princess* by Kenji Mizumoto et al²⁴. The calculated median incubation period of COVID-19 was 4.16 days (IQR 3.60, 4.71), which was close to the reported 3 days in a study of including 1,099 laboratory-confirmed cases by Zhong N.S et al²⁵ and 5.1 days in 181 confirmed cases of COVID-19 by Lessler Justin et al²⁶. The median communicable period ($1/\gamma$) of asymptomatic infectors was computed as 6.77 days (IQR 4.53, 10.36), which was near the 9.6 days in 24 asymptomatic infectors reported by Shen H.B et al²⁷.

Previous studies about meteorological impact on the SARS-COV-2 transmissibility were still controversial. Wang Mao et al¹⁹ and Sajadi MM et al²⁰ reported that regions in 30-50° N’ corridor with 5°C-11°C average temperature had increased COVID-19 transmission, but Canelle Poirier et

*al*²⁸ indicated no significant correlation between high temperature/ humidity and COVID-19 transmission. We found the transmission rate β increased as the minimum, mean, maximum temperature rose from -5°C and reach the peak at 7°C (44.6°F), 10°C (50°F), and 15°C (59°F), respectively, and then started to decline at higher temperature across the 29 provinces. It is coincident with the curves reported by Wang Mao *et al*¹⁹, who have claimed that the peak of accumulative cases of 492 cities appeared at the minimum, average and maximum temperature of 6.7°C (44.06°F), 8.72°C (47.7°F) and 12.42°C (54.36°F) respectively. The optimal mean temperature ranges for COVID-19 transmission was 5°C - 14°C (41°F - 57.2°F). Lowen Ac *et.al* proved that influenza virus transmission by droplets was greater and the peak duration of virus shedding lasted longer at 5°C (41°F) than 20°C (68°F)²⁹. Indeed, we observed the β of COVID-19 at 5°C (7.39 ± 1.62) was higher than β at 20.25°C (4.39 ± 1.63). Another similar infectious disease, SARS was found with higher transmission in temperature $<24.6^{\circ}\text{C}$ than $>24.6^{\circ}\text{C}$ circumstance in Hong Kong³⁰. It's hard to say if it will disappear in the coming summer or reappear in the next year, but from the curve we illustrated, we could suspect the transmission rate would further reduce at higher temperature over 20.25°C (68.45°F). The broader range of air temperature for optimal COVID-19 transmission strongly suggests the necessity and urgency of vaccine at present or in the future.

In conclusion, we constructed the stochastic ScEIQRsh model which can well fit both the early spreading and early social intervention data of COVID-19 in China. The effectiveness of NPIs for mitigating the transmission of COVID-19 were evaluated, keeping the contactable susceptible (Sc or c) in low level and promoting the diagnosis and hospitalized isolation of COVID-19 promptly are crucial for mitigating early transmission of COVID-19. The properties of COVID-19, such as proportion of asymptomatic infectors, incubation period and communicable period were determined. The appropriate temperature for SARS-COV-2 transmission was within 5°C - 14°C (41°F - 57.2°F). Our model might be useful for providing suggestions on managing and preventing COVID-19 transmission among acquaintances and some contactable strangers of the infectors, even suitable for other similar infectious disease.

Contributors

BS and LZ conceived and designed the study. QT, MP and YW collected the epidemiological data of each province in Mainland China. BS and DL analyzed the data with the help of SG, TJ, YW

and MP. DL and QT drafted the manuscript. BS and LZ revised the manuscript critically. All authors reviewed and approved the final manuscript.

Declaration of interests

All authors declare no competing interests.

Acknowledgments

The study was funded by the National Natural Science Foundation of China (No. 81572269). We would like to thank all of medical staffs in China, especially the doctors and nurses in Hubei province. There are totally 40,000 doctors and nurses went to Hubei province for supporting the inadequate health care system voluntarily. Thanks to everyone in China staying at home during the epidemic of COVID-19. Wish all the people who are suffering COVID-19 go through the tough time as soon as possible.

References

1. Lu R, Zhao X, Li J, et al. Genomic characterisation and epidemiology of 2019 novel coronavirus: implications for virus origins and receptor binding. *Lancet (London, England)* 2020.
2. Wuhan Municipal Health Commission briefing on the pneumonia epidemic situation, 31 December 2019 (<http://wjw.wuhan.gov.cn/front/web/showDetail/2019123108989>).
3. WHO Director-General's opening remarks at the media briefing on COVID-19 - 11 March 2020. (<https://www.who.int/dg/speeches/detail/who-director-general-s-opening-remarks-at-the-media-briefing-on-covid-19---11-march-2020>.)
4. Chen W, Wang Q, Li YQ, et al. [Early containment strategies and core measures for prevention and control of novel coronavirus pneumonia in China]. *Zhonghua yu fang yi xue za zhi [Chinese journal of preventive medicine]* 2020; **54**(3): 1-6.
5. Organization WH. Non-pharmaceutical public health measures for mitigating the risk and impact of epidemic and pandemic influenza: annex: report of systematic literature reviews: World Health Organization, 2019.

6. Fong MW, Gao H, Wong JY, et al. Nonpharmaceutical Measures for Pandemic Influenza in Nonhealthcare Settings-Social Distancing Measures. *Emerging infectious diseases* 2020; **26**(5).
7. Group WHOW. Nonpharmaceutical interventions for pandemic influenza, international measures. *Emerging infectious diseases* 2006; **12**(1): 81.
8. Matthews Pillemer F, Blendon RJ, Zaslavsky AM, Lee BY. Predicting support for non-pharmaceutical interventions during infectious outbreaks: a four region analysis. *Disasters* 2015; **39**(1): 125-45.
9. Ji Y, Ma Z, Peppelenbosch MP, Pan Q. Potential association between COVID-19 mortality and health-care resource availability. *The Lancet Global health* 2020; **8**(4): e480.
10. Chinese Clinical Guidance for COVID-19 Pneumonia Diagnoses and Treatment version 6, March 7th, 2020. (<http://www.nhc.gov.cn/jkj/s3578/202003/d29e176f35ad4b0a80c74c1d347bfbcashtml>).
11. Tian S, Hu N, Lou J, et al. Characteristics of COVID-19 infection in Beijing. *Journal of Infection* 2020.
12. Report of the WHO-China Joint Mission on Coronavirus Disease 2019 (COVID-19) Pathogen from 2020-02-16 to 2020-02-24. (<https://www.cma.org.cn/module/download/downfile.jsp?classid=0&filename=52ef638872004fd9b47104a86dc33fcc.pdf>).
13. Chinazzi M, Davis JT, Ajelli M, et al. The effect of travel restrictions on the spread of the 2019 novel coronavirus (COVID-19) outbreak. *Science* 2020: eaba9757.
14. Tian H, Li Y, Liu Y, et al. Early evaluation of the Wuhan City travel restrictions in response to the 2019 novel coronavirus outbreak; 2020.
15. Quilty BJ, Clifford S, group2 Cnw, Flasche S, Eggo RM. Effectiveness of airport screening at detecting travellers infected with novel coronavirus (2019-nCoV). *Eurosurveillance* 2020; **25**(5): 2000080.
16. Clifford SJ, Pearson CAB, Klepac P, et al. Interventions targeting air travellers early in the pandemic may delay local outbreaks of SARS-CoV-2. *medRxiv* 2020: 2020.02.12.20022426.
17. Zhang Y, Jiang B, Yuan J, Tao Y. The impact of social distancing and epicenter lockdown on the COVID-19 epidemic in mainland China: A data-driven SEIQR model study. *medRxiv* 2020: 2020.03.04.20031187.
18. Hellewell J, Abbott S, Gimma A, et al. Feasibility of controlling COVID-19 outbreaks by isolation of cases and contacts. *The Lancet Global Health* 2020.
19. Wang M, Jiang A, Gong L, et al. Temperature significant change COVID-19 Transmission in 429 cities. *medRxiv* 2020: 2020.02.22.20025791.
20. Sajadi MM, Habibzadeh P, Vintzileos A, Shokouhi S, Miralles-Wilhelm F, Amoroso A. Temperature and Latitude Analysis to Predict Potential Spread and Seasonality for COVID-19. *Available at SSRN 3550308* 2020.
21. Guan Q, Liu M, Zhuang YJ, et al. [Epidemiological investigation of a family clustering of COVID-19]. *Zhonghua liu xing bing xue za zhi = Zhonghua liuxingbingxue zazhi* 2020; **41**(0): 629-33.
22. Chen S, Zhang Z, Yang J, et al. Fangcang shelter hospitals: a novel concept for responding to public health emergencies. *The Lancet* 2020.
23. Nishiura H, Kobayashi T, Miyama T, et al. Estimation of the asymptomatic ratio of novel coronavirus infections (COVID-19). *medRxiv* 2020: 2020.02.03.20020248.
24. Mizumoto K, Kagaya K, Zarebski A, Chowell G. Estimating the asymptomatic proportion of coronavirus disease 2019 (COVID-19) cases on board the Diamond Princess cruise ship, Yokohama, Japan, 2020. *Euro Surveill* 2020; **25**(10): 2000180.
25. Guan W-j, Ni Z-y, Hu Y, et al. Clinical characteristics of 2019 novel coronavirus infection in China. *medRxiv* 2020: 2020.02.06.20020974.
26. Lauer SA, Grantz KH, Bi Q, et al. The Incubation Period of Coronavirus Disease 2019 (COVID-19) From Publicly Reported Confirmed Cases: Estimation and Application. *Annals of Internal Medicine* 2020.
27. Hu Z, Song C, Xu C, et al. Clinical characteristics of 24 asymptomatic infections with COVID-19 screened among close contacts in Nanjing, China. *Science China Life Sciences* 2020.

28. Poirier C, Luo W, Majumder MS, et al. The Role of Environmental Factors on Transmission Rates of the COVID-19 Outbreak: An Initial Assessment in Two Spatial Scales. *Available at SSRN 3552677* 2020.
29. Lowen AC, Mubareka S, Steel J, Palese P. Influenza virus transmission is dependent on relative humidity and temperature. *PLoS Pathog* 2007; **3**(10): e151.
30. Lin K, Fong DY-T, Zhu B, Karlberg J. Environmental factors on the SARS epidemic: air temperature, passage of time and multiplicative effect of hospital infection. *Epidemiology & Infection* 2006; **134**(2): 223-30.

Supplementary figure legends:

Figure S1 The fitting curve between cumulative confirmed/quarantined cases and predicted value of R_h and Q compartments in 21 provinces of Mainland China.

- A: The fitting curve of provinces in Northwest China-Xinjiang/ Shaanxi/ Ningxia and Central China-Hunan/ Henan.
- B: The fitting curve of provinces in South China-Hainan/ Guangxi, and Southwest China-Yunnan/ Guizhou/ Chongqing.
- C: The fitting curve of provinces in East China-Shanghai/ Zhejiang/ Anhui/ Fujian/ Shandong/ Jiangsu.
- D: The fitting curve of provinces in North China- Neimenggu/ Tianjin/ Hebei/ Shanxi and Northeast China-Heilongjiang/ Jilin.

Figure S2 The κ / ρ among 29 provinces and the impact of them on transmission of COVID-19.

- A-B: The median κ and ρ was observed as different among 29 provinces.
- C-D: The curves of R_h , Q and I compartment were simulated when increasing or decreasing κ by 30% or 50%.

E-F: The curves of Rh, Q and I compartment were simulated when adjusted the value of ρ by 30% or 50% up/down-regulation.

Figure S3 The impact of minimum, mean and maximum temperature on the Rvq of COVID-19 in mainland China.

A, B, C: The correlation between the minimum (A), mean (B) and maximum (C) temperature and the Rvq of COVID-19 was determined, which implied with the rare influence of temperature on Rvq.

D: The legend for the colorful dot in Figure A-C. One dot paralleled with minimum, mean or maximum temperature of one province from the 15th, Jan, 2020 to 15th, Feb, 2020.