

1 **Attributable mortality of vancomycin resistance in ampicillin-resistant *Enterococcus***  
2 ***faecium* bacteremia in Denmark and the Netherlands: a matched cohort study**

3 Wouter C. Rottier<sup>1</sup>, Mette Pinholt<sup>3,4\*</sup>, Akke K. van der Bij<sup>5,a\*</sup>, Magnus Arpi<sup>6</sup>, Sybrandus N. Blank<sup>7</sup>,  
4 Marringje H. Nabuurs-Franssen<sup>8</sup>, Gijs J.H.M. Ruijs<sup>9</sup>, Matthijs Tersmette<sup>10</sup>, Jacobus M. Ossewaarde<sup>11</sup>,  
5 Rolf H. Groenwold<sup>12</sup>, Henrik Westh<sup>3,4</sup> and Marc J.M. Bonten<sup>1,2</sup>, on behalf of the Dutch VRE  
6 Bacteremia Investigators and the Danish Collaborative Bacteraemia Network (DACOBAN)

7 <sup>1</sup>Julius Center for Health Sciences and Primary Care, and <sup>2</sup>Department of Medical Microbiology, University  
8 Medical Center Utrecht, Utrecht, the Netherlands

9 <sup>3</sup>Department of Clinical Microbiology, Hvidovre University Hospital, Hvidovre, Denmark

10 <sup>4</sup>Faculty of Health and Medical Sciences, University of Copenhagen, Copenhagen, Denmark

11 <sup>5</sup>Centre for Infectious Disease Control (CIb), National Institute for Public Health and the Environment  
12 (RIVM), Bilthoven, the Netherlands

13 <sup>6</sup>Department of Clinical Microbiology, Herlev University Hospital, Herlev, Denmark

14 <sup>7</sup>Department of Internal Medicine, Maxima Medical Center, Eindhoven/Veldhoven, the Netherlands

15 <sup>8</sup>Department of Medical Microbiology, Canisius-Wilhelmina Hospital, Nijmegen, the Netherlands

16 <sup>9</sup>Laboratory for Clinical Microbiology and Infectious Diseases, Isala, Zwolle, the Netherlands

17 <sup>10</sup>Department of Medical Microbiology and Immunology, St. Antonius Hospital, Utrecht/Nieuwegein;

18 <sup>11</sup>Department of Medical Microbiology, Maasstad Ziekenhuis, Rotterdam, The Netherlands

19 <sup>12</sup>Department of Clinical Epidemiology, Leiden University Medical Center, Leiden, The Netherlands.

20 <sup>a</sup> Present affiliation: Department of Medical Microbiology and Immunology, Diaconessenhuis, Utrecht, the  
21 Netherlands.

22 \* Authors contributed equally.

23 **Corresponding author:**

24 Wouter C. Rottier

25 Julius Center for Health Sciences and Primary Care

26 University Medical Center Utrecht

27 Huispostnummer STR 6.131

28 Postbus 85500

29 3508 GA Utrecht

30 the Netherlands.

31 Telephone: +31 88 75 576 76

32 Fax: +31 88 75 680 99

33 E-mail: [w.c.rottier-2@umcutrecht.nl](mailto:w.c.rottier-2@umcutrecht.nl)

34 **Abstract**

35 **Background** In many European hospitals, ampicillin-resistant *Enterococcus faecium* (ARE) is  
36 endemic, while outbreaks of vancomycin-resistant *E. faecium* (VRE), belonging to the same  
37 genetic lineage, are increasingly reported. We studied the attributable mortality due to  
38 vancomycin resistance in patients with *E. faecium* bacteremia and evaluated whether this is  
39 mediated by a delay in appropriate antibiotic therapy.

40 **Methods** In a retrospective matched cohort study, patients with VRE bacteremia occurring  
41 between 2009 and 2014 in 20 Dutch and Danish hospitals were matched to patients with ARE  
42 bacteremia, on hospital, ward, length of hospital stay prior to bacteremia, and age. The risk ratio  
43 (RR) for 30-day mortality contrasting VRE with ARE was estimated with further analytic control  
44 for confounding factors.

45 **Results** In all, 63 VRE and 234 ARE episodes were matched (36 and 130 for the Netherlands and  
46 27 and 104 for Denmark). Crude 30-day mortality was 27% and 38% for ARE in the Netherlands  
47 and Denmark, respectively, and 33% and 48% for VRE in the respective countries. The adjusted  
48 RR for 30-day mortality for VRE was 1.54 (95% confidence interval (CI) 1.06-2.25). Although  
49 appropriate therapy was initiated later for VRE than for ARE bacteremia, this did not appear to  
50 mediate the increased mortality risk.

51 **Conclusions** Compared to ARE bacteremia, VRE bacteremia was associated with higher 30-day  
52 mortality. One explanation for this association would be increased virulence of VRE, although  
53 both phenotypes belong to the same well-characterized core genomic lineage. Alternatively, it  
54 may be the result of unmeasured confounding.

## 55 **Introduction**

56 As many other countries, the Netherlands and Denmark have faced increasingly frequent  
57 polyclonal hospital outbreaks of *Enterococcus faecium* with combined resistance to ampicillin  
58 and vancomycin (VRE) during the past years [1,2]. In these countries, ampicillin-resistant,  
59 vancomycin-susceptible *E. faecium* (ARE) has become the dominant hospital phenotype of *E.*  
60 *faecium* in recent decades [2,3]. Since hospital-acquired VRE and ARE are genetically  
61 indistinguishable at the core genome level, VRE is assumed to have originated from the  
62 omnipresent ARE through acquisition of *vanA* or *vanB* genes [4–7]. In both countries, infection  
63 control policies have been implemented to prevent nosocomial transmission of VRE (contact  
64 precautions for VRE carriers, supplemented by contact tracing and augmented general hygiene  
65 measures in case of outbreaks [8,9]), but not for ARE. Failure to control VRE transmission will  
66 most likely result in VRE endemicity, because the nosocomial ARE populations will in part be  
67 supplanted by VRE [3,10].

68 Controlling VRE outbreaks imposes a great burden on finances and hospital personnel [11]. To  
69 make an appropriate cost-benefit analysis of containing VRE spread in a healthcare system, it is  
70 essential to quantify the benefits of such a strategy. The most important threat for individual  
71 patients is the adversity patients will experience due to VRE infection as compared to ARE  
72 infection. A meta-analysis reported increased mortality after VRE bacteremia compared to ARE  
73 bacteremia [12], but most studies included had been performed before effective antibiotics for  
74 VRE were available. Since then, few have attempted to quantify the effects of VRE infection  
75 compared to ARE infection, and those available often suffered from methodological drawbacks,

76 such as combining *E. faecium* and *Enterococcus faecalis* infection and incomplete control for  
77 confounding [13].

78 We, therefore, sought to investigate the fraction of mortality in VRE bacteremia superimposed  
79 by vancomycin resistance, in both the Netherlands and Denmark. We also analyzed whether any  
80 such increase is the result of a delay in appropriate antibiotic therapy, as this is *a priori* the most  
81 likely mediating mechanism.

## 82 **Methods**

### 83 *Study design, setting and participants*

84 We addressed a causal research question with an observational study in which confounding bias  
85 was dealt with in a two-stepped approach. First, by means of matching, patients with ARE  
86 bacteremia and with underlying disease severity similar to the VRE bacteremia patients were  
87 chosen as comparison group. Second, we controlled for remaining imbalances in confounding  
88 factors after matching by means of adjustment in multivariable models.

89 This resulted in a retrospective matched cohort study in which episodes of bacteremia caused by  
90 *E. faecium* with co-resistance to ampicillin and vancomycin (designated as VRE) were compared  
91 to control episodes of bacteremia caused by *E. faecium* with resistance to ampicillin and  
92 susceptibility to vancomycin (designated as ARE). Episodes with ampicillin-susceptible VRE  
93 bacteremias were excluded. Depending on the availability, a maximum of 4 ARE bacteremias  
94 were matched to each VRE bacteremia, using the variables hospital, hospital ward at bacteremia

95 onset, age and length of stay prior to bacteremia (see Supplementary Material for a complete  
96 description).

97 No formal sample size calculation was performed, as in both involved countries, VRE  
98 bacteremias are rare occurrences, and we had to rely on the willingness of hospitals country-  
99 wide to participate. In the Netherlands, VRE bacteremia episodes were identified in 13 hospitals  
100 through the national surveillance system ISIS-AR [14], and eleven participated in this study, as  
101 did five hospitals not linked to ISIS-AR (see Supplementary Table 1 for details of participating  
102 hospitals). In Denmark, the DACOBAN database was used to identify patients with VRE  
103 bacteremia. DACOBAN is a registry of all positive blood cultures from 10 of 11 hospitals in the  
104 Capital Region of Denmark (the exception being the tertiary referral center Rigshospitalet) [15].  
105 Patients with VRE bacteremia were identified in five hospitals of which four participated in this  
106 study.

107 In the Netherlands, we included patients with VRE bacteremia that occurred between 1 January  
108 2009 and 1 January 2013, with deviations in some hospitals (Supplementary Table 1). In  
109 Denmark, we included patients with VRE bacteremia that occurred between 1 January 2012 and  
110 1 January 2015.

111 Minimum inhibitory concentrations (MICs) for ampicillin and vancomycin were used as reported  
112 by local laboratories. All Danish laboratories interpreted antimicrobial susceptibility according to  
113 EUCAST standards, but most Dutch laboratories switched from CLSI to EUCAST standards in  
114 recent years [14]. Vancomycin resistance had to be confirmed by E-test or demonstration of the  
115 presence of *vanA* or *vanB*. The specific VRE genotype was based on PCR-testing or on

116 teicoplanin susceptibility (resistant categorized as *vanA*, susceptible as *vanB*) if PCR testing had  
117 not been performed.

118 The Institutional Review Board of the coordinating center judged the study to be exempt from  
119 the Dutch Medical Research Involving Human Subjects Law due to its retrospective nature.  
120 Informed consent was not necessary, as data were provided anonymized by treating physicians.  
121 In all participating study sites, local regulations for such studies were followed. In Denmark, the  
122 study was approved by the Danish Data Protection Agency (registered under 2012-58-0004) and  
123 the Danish Health and Medicines Authority (registered under 3-3013-1118/1).

#### 124 *Data collection*

125 After selection of cases and controls, charts were manually reviewed with the date of the index  
126 blood culture (bacteremia onset) as reference date. A description of the potential confounding  
127 variables and infection-related variables for which data were collected is provided in the  
128 Supplementary Material.

129 Additionally, antibiotic use was registered from 30 days prior to bacteremia onset until 14 days  
130 after onset, including type of antibiotic, route of administration, and starting and stopping dates.  
131 Antibiotic use prior to bacteremia was considered a potential confounder, whereas treatment  
132 provided for the *E. faecium* bacteremia episode was considered the main intermediate variable  
133 on the causal pathway leading from vancomycin resistance to increased mortality. To analyze  
134 this variable, on each calendar day from bacteremia onset onwards (considered day 0), antibiotic  
135 treatment was categorized as (a) either *E. faecium*-covering (i.e. including vancomycin, linezolid,  
136 daptomycin, teicoplanin, quinupristin/dalfopristin and/or tigecyclin, regardless of vancomycin

137 resistance phenotype) or not, and (b) appropriate (i.e. all of the aforementioned antibiotics for  
138 ARE infection, all except vancomycin for *vanB* VRE infection, and all except vancomycin and  
139 teicoplanin for *vanA* VRE infection) or inappropriate.

140 The primary outcome of the study was mortality within 30 days of bacteremia onset, and  
141 secondary outcomes were mortality within 1 year, in-hospital mortality, length of hospital stay  
142 after bacteremia onset, and intensive care unit admission within 7 days of bacteremia onset. For  
143 all bacteremia cases, follow-up data (censoring date or date of death) for at least 30 days after  
144 bacteremia onset, but preferably up to 1 year after bacteremia onset were collected.

#### 145 *Statistical analysis*

146 The relation between ARE/VRE and 30-day mortality was estimated using Cox regression  
147 models, unadjusted as well as adjusted for potential confounding variables. All models were Cox  
148 proportional hazards models, with stratification on matched sets, robust standard errors, and  
149 correlation between individuals that were included multiple times. For models without  
150 censoring, all episodes were given the same arbitrary follow-up time and the Efron  
151 approximation for tied survival times was used, so that hazard ratios (HR) could be interpreted  
152 as risk ratios (RR) [16]. The standard adjusted models involved inclusion of all potential  
153 confounders a priori deemed relevant by us to achieve optimal correction, followed by removal  
154 of redundant variables to increase precision [17]. As a sensitivity analysis, stepwise addition and  
155 removal of potential confounders was performed, starting from a model including only the  
156 exposure of interest. In the Supplementary Material, exact procedures are described. In case of  
157 missing values for the variables included in a model, individuals were excluded from the analysis.

158 Several additional models were created to evaluate mediation of the effect of VRE on mortality  
159 through appropriateness of therapy. For this, an interaction between vancomycin resistance and  
160 appropriateness of therapy was included. As appropriateness of therapy is a time-varying  
161 variable, three models were created in which the baseline was moved to the end of day 0 (day of  
162 the index blood culture), +1, and +2, respectively. Patients having died or censored before or on  
163 the day of the baseline were removed from the analysis. Appropriateness of therapy in each  
164 model reflected the state at baseline.

165 All statistical analyses were performed in R (version 3.6.1) [18], with the use of packages *survival*  
166 [19], *cmprsk* [20], *rms* [21], *mice* [22] and *xtable* [23].

## 167 **Results**

### 168 *Patient characteristics*

169 In all, 63 VRE episodes were matched to 234 ARE episodes (36 and 130 for the Netherlands, and  
170 27 and 104 for Denmark). VRE and matched ARE bacteremia episodes had largely similar  
171 characteristics (Table 1 and Supplementary Table 2). Differences between both countries were  
172 also present, most prominently involving treatment restriction prior to bacteremia. The latter  
173 variable is generally registered on a dedicated location in Dutch health records, but had to be  
174 abstracted from written notes in Denmark. Also, comorbidities were retrieved from the  
175 DACOBAN registry in Denmark, whereas they were abstracted from medical notes in the  
176 Netherlands.



177 Most VRE were *vanA* (n = 41, 65%), 19 were *vanB* (30%), one isolate carried both *vanA* and *vanB*  
178 and two isolates could not be categorized. All VRE isolates from Denmark (n = 27) were *vanA*.  
179 Seventeen isolates were categorized based on teicoplanin susceptibility (3 *vanA* and 14 *vanB*, all  
180 from the Netherlands).

### 181 *Mortality*

182 All patients could be assessed for 30-day mortality, and 76% of censored patients had a follow-  
183 up time of at least one year. Crude 30-day mortality was 40% for VRE and 32% for ARE: 33% and  
184 27% for VRE and ARE, respectively, in the Netherlands and 48% and 38% in Denmark. In the  
185 Netherlands, 30-day mortality per VRE phenotype was 29% for *vanA* and 37% for *vanB*. The  
186 unadjusted RR for 30-day mortality of VRE (compared to ARE) was 1.27 (95% confidence interval  
187 (CI) 0.87-1.84; 1.16 (95% CI 0.65-2.06) for the Netherlands, 1.37 (95% CI 0.84-2.25) for Denmark;  
188 Table 2). Adjustment for confounding increased the RR to 1.54 (95% CI 1.06-2.25). Within the  
189 Dutch subgroup, addition of the confounder *Acute Physiology Score before bacteremia onset* to  
190 an otherwise optimally adjusted model reduced the RR of vancomycin resistance from 1.62 to  
191 1.17 (see Supplementary Material).

192 One year mortality was larger among Danish patients with VRE compared to patients with ARE  
193 bacteremia or Dutch patients with VRE or ARE bacteremia (Figure 1). In the multivariable Cox  
194 model for mortality up to one year, the HR for VRE amounted to 1.25 (95% CI 0.80-1.98; Table  
195 3).

196 *Antibiotic therapy*

197 Visual inspection of cumulative incidence plots revealed that initiation of *E. faecium*-covering  
198 antibiotic therapy occurred faster in VRE than in ARE episodes (Figure 2), but that initiation of  
199 appropriate antibiotic therapy occurred faster for ARE compared to VRE bacteremia (Figure 3). In  
200 Denmark, appropriate antibiotic therapy for both ARE and VRE bacteremia was started earlier  
201 than in the Netherlands, and often consisted of linezolid daptomycin combination treatment  
202 (Table 4).

203 Inclusion of inappropriate antibiotic therapy on the day of the index blood culture (day 0), in  
204 itself associated with mortality (RR 2.79 (95% CI 0.99-7.86)), did not alter the effect of VRE on 30  
205 day mortality (Table 2). In models with an interaction between vancomycin resistance and  
206 appropriateness of therapy, VRE patients on inappropriate therapy increasingly fared worse over  
207 time compared to ARE patients on inappropriate therapy (Table 5). ARE patients on appropriate  
208 therapy had better survival than those on inappropriate therapy, but this protective effect  
209 seemed to diminish over time. The effect estimates for VRE patients on appropriate therapy  
210 were uncertain.

211 **Discussion**

212 This study reveals that, after matching and further analytic control for confounders, VRE  
213 bacteremia was, compared to ARE bacteremia, associated with 54% higher risk for mortality after  
214 30 days (RR 1.54, 95% CI 1.06-2.25). Yet, this increased risk of death must be explained by other  
215 factors than a delay in appropriate antibiotic therapy.

216 Our estimate for the effect of VRE on mortality is similar to the reported pooled OR of 2.52 (95%  
217 CI 1.9-3.4) in a meta-analysis from 2005 [12], which translates to a RR of 1.70 in case of 32%  
218 death rate in the non-exposed group [24]. This seems remarkably identical, as the studies  
219 included in that meta-analysis had been performed before the availability of effective antibiotics  
220 for VRE, such as linezolid and daptomycin. Yet, a small study comparing older and newer  
221 antibiotics in 113 VRE bacteremias concluded that newer antibiotics had not brought  
222 discernable benefits to patient outcome [25]. A later meta-analysis on the effect of VRE on  
223 mortality in the era of effective antibiotic therapy could only present an unadjusted estimate,  
224 and hence cannot be compared to our study [13]. Recent Australian and German studies all  
225 found point estimates reflecting increased mortality in case of vancomycin resistance, with  
226 confidence intervals indicating non-significance [26–28]. By analyzing the *E. faecium* bacteremia  
227 subset and not including intermediate variables in the adjusted model, the OR of 1.283 (95% CI  
228 0.801-2.057) from Kramer *et al.* most closely reflects our estimation procedure [27].

229 There are three causal pathways along which vancomycin resistance could lead to increased  
230 mortality: (i) increased virulence of VRE compared to ARE, (ii) less effective antibiotics for VRE  
231 than for ARE, and (iii) a delay in initiation of appropriate antibiotic therapy for VRE bacteremia.  
232 We cannot fully exclude a systematic difference in pathogenicity between ARE and VRE, as for  
233 example Bender *et al.* have shown that acquisition of *vanB* by *E. faecium* is accompanied by the  
234 transfer of larger genetic fragments [29]. However, most studies conclude that both phenotypes  
235 belong to the same, well-characterized, core genomic lineage of *E. faecium* [4,7]. Furthermore, to  
236 the best of our knowledge, there is no evidence that the appropriate antibiotic options for *E.*  
237 *faecium*, most prominently vancomycin, linezolid or daptomycin, have different efficacy for

238 susceptible strains. In this study, vancomycin was mostly used for ARE, and linezolid and  
239 daptomycin for VRE.

240 The observed increased mortality in case of VRE bacteremia, therefore, could be expected to  
241 result from a delay in appropriate therapy, which has been implicated previously in worse  
242 outcomes in case of enterococcal bacteremia [30]. However, our models that include  
243 appropriateness of therapy do not offer support for this hypothesis. VRE patients on  
244 inappropriate therapy continuously fare worse than ARE patients on inappropriate therapy.  
245 Therapy over time may be reflective of the evolving disease severity of the patient, and collider  
246 bias may be induced by conditioning on appropriateness of therapy [31]. This means that effect  
247 estimates of appropriateness of therapy after baseline may not reflect true causal associations.  
248 However, seeing that this trend is discernable from the day of the index blood culture onwards  
249 increases our confidence that the difference in duration until appropriate therapy is unable to  
250 explain the increased mortality in case of VRE bacteremia. A final indication for this stems from  
251 the comparison between countries in this study. Overall mortality in Denmark for both ARE and  
252 VRE bacteremia is higher than in Netherlands, although appropriate therapy for both types of  
253 bacteremia is initiated considerably faster in Denmark than in the Netherlands.

254 As these biologically plausible mediators cannot explain increased mortality due to vancomycin  
255 resistance, the possibility remains that these observed effects are due to unmeasured  
256 confounding. This possibility is supported by two additional observations. First, a measure for  
257 clinical disease severity immediately before bacteremia onset was not available for the Danish  
258 patients. For the Dutch patients, we could calculate the Acute Physiology score, and when

259 included in our country-specific analyses, it substantially reduced the effect estimate for  
260 mortality (see Supplementary Material). Second, the association between vancomycin resistance  
261 and mortality persisted over the course of a full year. Infections may have long-term sequelae  
262 [32], but it seems unlikely that sustained mortality differences will emerge that can be causally  
263 related to vancomycin resistance. A Dutch population-based study reported that the incidence  
264 of recurrent bacteremia, an example of a long-term consequence, only marginally differed  
265 between ARE and VRE bacteremia [33]. An alternative explanation is that underlying prognostic  
266 factors at the time of onset of enterococcal bacteremia were dissimilar.

267 Several limitations of this study should be discussed. First, results of this study may not apply to  
268 *E. faecium* bacteremia in general, as a non-random subset of ARE bacteremias was included. The  
269 matched design does not allow for direct comparisons of raw proportions other than for VRE vs.  
270 ARE. Second, some loss in precision may be expected in stratified analyses, as not all matched  
271 sets can be used for parameter estimation. Third, measurements of comorbidities and treatment  
272 restrictions differed between both countries, whereas these differences were not included in  
273 models. Fourth, duration until initiation of appropriate therapy could not be reliably measured in  
274 hours, and was reflected instead by calendar days.

275 Finally, some studies suggest that the incidence of infections with VRE occur on top of the  
276 existing incidence of infections caused by vancomycin-susceptible enterococci [34,35]. In that  
277 case, a comparison between VRE bacteremia and an uninfected control group would be more  
278 appropriate, as described by Chiang *et al.* [36]. Yet, it is important to note that these incidence  
279 rates may have been confounded by the fact that *E. faecalis* was not separated from *E. faecium*,

280 and that results from molecular epidemiological studies provided strong evidence that ARE and  
281 VRE occupy the same niche within the bacterial hospital ecology [4].

282 In conclusion, VRE bacteremia was, when compared to ARE bacteremia, associated with higher  
283 mortality. This could not be explained by delays in initiation of appropriate antibiotic therapy,  
284 although the relevant models are possibly underpowered and should be interpreted with  
285 caution. Because of the large heterogeneity among infected patients and the multiple  
286 determinants that mediate the outcome for patients developing *E. faecium* bacteremia,  
287 unmeasured confounding is a likely explanation. In that case, replacement of ARE infections by  
288 VRE infections would not lead to higher 30-day mortality. The alternative explanation is that VRE  
289 is more virulent than ARE. Given the resemblance of the core genomes of ARE and VRE, the  
290 genetic basis for hypervirulence would then be most likely encoded in the accessory genome,  
291 the mobilome. In that case, emergence of VRE could not only replace ARE infections but also  
292 increase the total burden of infection. Further studies are warranted to explore this possibility.

293 **Funding**

294 This work was supported by a research grant from the Netherlands Organisation for Health  
295 Research and Development [grant number 205200007] to W.C.R.

296

297 **Acknowledgment**

298 We would like to thank all participating hospitals for making data collection possible. We  
299 specifically thank Marja Smid for her assistance with the data collection in the Netherlands, and  
300 Kim Gradel and Steen Rasmussen for extraction of comorbidity data in Denmark. We also thank  
301 Rob Willems for critically reviewing an earlier version of this manuscript.

302 *The Dutch VRE Bacteremia Investigators study group consists of:* Heidi S.M. Ammerlaan (Catharina  
303 Ziekenhuis, Eindhoven), Akke K. van der Bij (National Institute for Public Health and the  
304 Environment (RIVM), Bilthoven; present affiliation: Diaconessenhuis, Utrecht), Sybrandus N. Blank  
305 (Maxima Medisch Centrum, Eindhoven/Veldhoven), Marc J.M. Bonten (Universitair Medisch  
306 Centrum, Utrecht), Els I.G.B. de Brauwier (Zuyderland, Heerlen/Sittard-Geleen), Mirjam J.D.  
307 Dautzenberg (Universitair Medisch Centrum, Utrecht; present affiliation: Radboudumc,  
308 Nijmegen), Laura van Dommelen (Stichting PAMM, Veldhoven), Paul Gruteke (Onze Lieve  
309 Vrouwe Gasthuis, Amsterdam; Flevoziekenhuis, Almere), Rogier Jansen (Onze Lieve Vrouwe  
310 Gasthuis, Amsterdam), Saskia Kuipers (Radboudumc, Nijmegen), MARRIGJE H. Nabuurs-Franssen  
311 (Canisius-Wilhelmina Ziekenhuis, Nijmegen), Lieke Möller (Certe, Groningen), Jacobus M.  
312 Ossewaarde (Maasstad Ziekenhuis, Rotterdam), Wouter C. Rottier (Universitair Medisch Centrum,

313 Utrecht), Wouter Rozemeijer (Noordwest Ziekenhuisgroep, Alkmaar), Gijs J.H.M. Ruijs (Isala,  
314 Zwolle), Annelot F. Schoffelen (National Institute for Public Health and the Environment (RIVM),  
315 Bilthoven), Fre W. Sebens (Deventer Ziekenhuis, Deventer; present affiliation: LabMicTA,  
316 Hengelo), Peter M. Schneeberger (Jeroen Bosch Ziekenhuis, 's-Hertogenbosch), Matthijs  
317 Tersmette (St. Antonius Ziekenhuis, Utrecht/Nieuwegein), Saara J. Vainio (VU medisch centrum,  
318 Amsterdam; present affiliation: St. Antonius Ziekenhuis, Utrecht/Nieuwegein), G. Paul Voorn (St.  
319 Antonius Ziekenhuis, Utrecht/Nieuwegein)

320 *The Danish Collaborative Bacteraemia Network (DACOBAN) study group consists of:* Magnus Arpi,  
321 Kim O. Gradel, Ulrich S. Jensen, Jenny D. Knudsen, Kristoffer Koch, Henrik C. Schønheyder, Mette  
322 Søggaard, Sara Thønnings, Jesper Smit, Mette Pinholt, Christian Ø. Andersen

323 Results from this study were presented at the 25th European Congress of Clinical Microbiology  
324 and Infectious Diseases, Copenhagen, Denmark (25-28 April 2015, oral presentation O090).

325 *Potential conflicts of interest.* All authors: No conflict.



## 326 **References**

- 327 1. de Greeff SC, Mouton JW. NethMap 2017: consumption of antimicrobial agents and  
328 antimicrobial resistance among medically important bacteria in the Netherlands in 2016.  
329 Bergen, the Netherlands: Stichting Werkgroep Antibioticabeleid & Rijksinstituut voor  
330 Volksgezondheid en Milieu, 2017.
- 331 2. Borck Høg B, Korsgaard H, Sönksen UW. DANMAP 2016: use of antimicrobial agents and  
332 occurrence of antimicrobial resistance in bacteria from food animals, food and humans in  
333 Denmark. Lyngby & Copenhagen, Denmark: Statens Serum Institut, DTU  
334 Veterinærinstituttet & DTU Fødevareinstituttet, 2017.
- 335 3. Top J, Willems RJL, Bonten MJM. Emergence of CC17 *Enterococcus faecium*: from  
336 commensal to hospital-adapted pathogen. *FEMS Immunol Med Microbiol* **2008**; 52:297–  
337 308.
- 338 4. Guzman Prieto AM, van Schaik W, Rogers MRC, et al. Global emergence and  
339 dissemination of enterococci as nosocomial pathogens: Attack of the clones? *Front*  
340 *Microbiol* **2016**; 7:788.
- 341 5. Howden BP, Holt KE, Lam MMC, et al. Genomic insights to control the emergence of  
342 vancomycin-resistant enterococci. *MBio* **2013**; 4:e00412-13.
- 343 6. Pinholt M, Gumpert H, Bayliss S, et al. Genomic analysis of 495 vancomycin-resistant  
344 *Enterococcus faecium* reveals broad dissemination of a vanA plasmid in more than 19  
345 clones from Copenhagen, Denmark. *J Antimicrob Chemother* **2017**; 72:40–47.

- 346 7. Raven KE, Reuter S, Reynolds R, et al. A decade of genomic history for healthcare-  
347 associated *Enterococcus faecium* in the United Kingdom and Ireland. *Genome Res* **2016**;  
348 26:1388–1396.
- 349 8. Bijzonder resistente micro-organismen (BRMO). Leiden, the Netherlands: Werkgroep  
350 Infectiepreventie, 2013.
- 351 9. Nationale infektionshygiejnische retningslinjer om supplerende forholdsregler ved  
352 infektioner og bærertilstand i sundhedssektoren (5. udgave). Copenhagen, Denmark:  
353 Central Enhed for Infektionshygiejne (Statens Serum Institut), 2016.
- 354 10. Johnstone J, Policarpio ME, Lam F, et al. Rates of blood cultures positive for vancomycin-  
355 resistant *Enterococcus* in Ontario: a quasi-experimental study. *CMAJ Open* **2017**; 5:E273–  
356 E280.
- 357 11. Dik JWH, Dinkelacker AG, Vemer P, et al. Cost-analysis of seven nosocomial outbreaks in  
358 an academic hospital. *PLoS One* **2016**; 11:e0149226.
- 359 12. DiazGranados CA, Zimmer SM, Klein M, Jernigan JA. Comparison of mortality associated  
360 with vancomycin-resistant and vancomycin-susceptible enterococcal bloodstream  
361 infections: a meta-analysis. *Clin Infect Dis* **2005**; 41:327–33.
- 362 13. Prematunge C, MacDougall C, Johnstone J, et al. VRE and VSE bacteremia outcomes in  
363 the era of effective VRE therapy: a systematic review and meta-analysis. *Infect Control  
364 Hosp Epidemiol* **2016**; 37:26–35.
- 365 14. Altorf-van der Kuil W, Schoffelen AF, de Greeff SC, et al. National laboratory-based

- 366 surveillance system for antimicrobial resistance: a successful tool to support the control of  
367 antimicrobial resistance in the Netherlands. *Euro Surveill* **2017**; 22:pii=17-00062.
- 368 15. Gradel KO, Schønheyder HC, Arpi M, Knudsen JD, Østergaard C, Søgård M. The Danish  
369 Collaborative Bacteraemia Network (DACOBAN) database. *Clin Epidemiol* **2014**; 6:301–  
370 308.
- 371 16. Cummings P. Re: 'Estimating the relative risk in cohort studies and clinical trials of  
372 common outcomes'. *Am J Epidemiol* **2004**; 159:213.
- 373 17. Greenland S, Daniel R, Pearce N. Outcome modelling strategies in epidemiology:  
374 traditional methods and basic alternatives. *Int J Epidemiol* **2016**; 45:565–575.
- 375 18. R Core Team. R: A language and environment for statistical computing. Vienna, Austria:  
376 2020.
- 377 19. Therneau T. A package for survival analysis in R (R package version 3.1-11). 2020;
- 378 20. Gray B. cmprsk: subdistribution analysis of competing risks (R package version 2.2-9).  
379 2019;
- 380 21. Harrell Jr FE. rms: Regression Modeling Strategies (R package version 5.1-4). 2019;
- 381 22. Buuren S van, Groothuis-Oudshoorn K. mice: multivariate imputation by chained  
382 equations in R. *J Stat Softw* **2011**; 45.
- 383 23. Dahl DB, Scott D, Roosen C, Magnusson A, Swinton J. xtable: export tables to LaTeX or  
384 HTML (R package version 1.8-4). 2019;

- 385 24. Zhang J, Yu KF. What's the relative risk? A method of correcting the odds ratio in cohort  
386 studies of common outcomes. *JAMA* **1998**; 280:1690–1.
- 387 25. Erlandson KM, Sun J, Iwen PC, Rupp ME. Impact of the more-potent antibiotics  
388 quinupristin-dalfopristin and linezolid on outcome measure of patients with vancomycin-  
389 resistant *Enterococcus* bacteremia. *Clin Infect Dis* **2008**; 46:30–6.
- 390 26. Cheah ALY, Spelman T, Liew D, et al. Enterococcal bacteraemia: factors influencing  
391 mortality, length of stay and costs of hospitalization. *Clin Microbiol Infect* **2013**; 19:E181–  
392 E189.
- 393 27. Kramer TS, Remschmidt C, Werner S, et al. The importance of adjusting for enterococcus  
394 species when assessing the burden of vancomycin resistance: a cohort study including  
395 over 1000 cases of enterococcal bloodstream infections. *Antimicrob Resist Infect Control*  
396 **2018**; 7:133.
- 397 28. Dubler S, Lenz M, Zimmermann S, et al. Does vancomycin resistance increase mortality in  
398 *Enterococcus faecium* bacteraemia after orthotopic liver transplantation? A retrospective  
399 study. *Antimicrob Resist Infect Control* **2020**; 9:22.
- 400 29. Bender JK, Kalmbach A, Fleige C, Klare I, Fuchs S, Werner G. Population structure and  
401 acquisition of the vanB resistance determinant in German clinical isolates of *Enterococcus*  
402 *faecium* ST192. *Sci Rep* **2016**; 6:21847.
- 403 30. Zasowski EJ, Claeys KC, Lagnf AM, Davis SL, Rybak MJ. Time is of the essence: the impact  
404 of delayed antibiotic therapy on patient outcomes in hospital-onset enterococcal

- 405            bloodstream infections. *Clin Infect Dis* **2016**; 62:1242–1250.
- 406    31.    Hernán MA, Hernández-Díaz S, Robins JM. A structural approach to selection bias.  
407            *Epidemiology* **2004**; 15:615–25.
- 408    32.    Leibovici L. Long-term consequences of severe infections. *Clin Microbiol Infect* **2013**;  
409            19:510–512.
- 410    33.    Woudt SHS, de Greeff SC, Schoffelen AF, Vlek ALM, Bonten MJM, Infectious Diseases  
411            Surveillance Information System–Antimicrobial Resistance (ISIS-AR) Study Group.  
412            Antibiotic resistance and the risk of recurrent bacteremia. *Clin Infect Dis* **2018**; 66:1651–  
413            1657.
- 414    34.    Ammerlaan HSM, Harbarth S, Buiting AGM, et al. Secular trends in nosocomial  
415            bloodstream infections: antibiotic-resistant bacteria increase the total burden of infection.  
416            *Clin Infect Dis* **2013**; 56:798–805.
- 417    35.    Popiel KY, Miller MA. Evaluation of vancomycin-resistant enterococci (VRE)-associated  
418            morbidity following relaxation of VRE screening and isolation precautions in a tertiary  
419            care hospital. *Infect Control Hosp Epidemiol* **2014**; 35:818–25.
- 420    36.    Chiang H-Y, Perencevich EN, Nair R, et al. Incidence and outcomes associated with  
421            infections caused by vancomycin-resistant enterococci in the United States: systematic  
422            literature review and meta-analysis. *Infect Control Hosp Epidemiol* **2017**; 38:203–215.  
423

**Table 1. Characteristics and outcomes of VRE and matched ARE bacteremias**

	Netherlands		Denmark	
	ARE bacteremia, n/N with data (%)	VRE bacteremia, n/N with data (%)	ARE bacteremia, n/N with data (%)	VRE bacteremia, n/N with data (%)
<b>Potential confounding variables</b>				
Female	47/130 (36)	19/36 (53)	51/104 (49)	10/27 (37)
Age, median (IQR)	70 (62-76)	69 (62-76)	69 (63-77)	71 (58-76)
Hospital ward at bacteremia onset				
- Internal medicine	47/130 (36)	15/36 (42)	31/104 (30)	8/27 (30)
- ICU	48/130 (37)	11/36 (31)	25/104 (24)	6/27 (22)
- Gastro-enterology/surgery	34/130 (26)	9/36 (25)	31/104 (30)	8/27 (30)
- Other	1/130 (1)	1/36 (3)	17/104 (16)	5/27 (19)
Bacteremia origin				
- Hospital-onset	113/130 (87)	29/36 (81)	93/104 (89)	24/27 (89)
- Healthcare-associated	15/130 (12)	4/36 (11)	10/104 (10)	1/27 (4)
- Community-onset	2/130 (2)	3/36 (8)	1/104 (1)	1/27 (4)
Length of hospital stay prior to bacteremia, median (IQR)	17 (11-24)	20 (14-36)	18 (6-24)	21 (10-29)
Preceding hospital admission within 3 months prior to bacteremia	58/130 (45)	15/36 (42)	47/103 (46)	13/26 (50)
Charlson index, median (IQR)	2 (2-3)	2 (1-4)	3 (1-4)	3 (2-6)
Hematological malignancy - under treatment	31/130 (24)	10/36 (28)	9/104 (9)	6/27 (22)
Metastasized solid malignancy	13/130 (10)	1/36 (3)	13/104 (12)	6/27 (22)
Neutropenia at bacteremia onset	32/130 (25)	11/36 (31)	8/104 (8)	6/27 (22)

Treatment restriction in place at bacteremia onset	26/130 (20)	10/36 (28)	5/102 (5)	2/27 (7)
Surgical procedure within 30 days prior to bacteremia	46/130 (35)	9/36 (25)	33/103 (32)	12/27 (44)
Known colonization with <i>E. faecium</i>				
- No	90/130 (69)	18/36 (50)	88/104 (85)	16/27 (59)
- Yes: ARE	38/130 (29)	7/36 (19)	16/104 (15)	2/27 (7)
- Yes: VRE	2/130 (2)	11/36 (31)	0/104 (0)	9/27 (33)
Antibiotic use within 30 days prior to bacteremia	122/130 (94)	33/36 (92)	95/104 (91)	25/27 (93)
Vancomycin use within 30 days prior to bacteremia	13/130 (10)	15/36 (42)	9/104 (9)	6/27 (22)
<b>Infection-related variables</b>				
Polymicrobial bacteremia	35/130 (27)	8/36 (22)	31/103 (30)	11/27 (41)
Severe sepsis at bacteremia onset	30/129 (23)	10/36 (28)	20/104 (19)	4/27 (15)
Bacteremia source				
- Primary bacteremia/central line infection/not identifiable from medical file	60/130 (46)	19/36 (53)	59/104 (57)	11/27 (41)
- Biliary tract infection	15/130 (12)	4/36 (11)	10/104 (10)	2/27 (7)
- Other intra-abdominal infection	35/130 (27)	9/36 (25)	12/104 (12)	7/27 (26)
- Other	20/130 (15)	4/36 (11)	23/104 (22)	7/27 (26)
Source control performed before day +7 <sup>a</sup> (if applicable to source)	38/79 (48)	8/19 (42)	25/47 (53)	4/13 (31)
<b>Outcome variables</b>				
ICU admission before day +7 <sup>a</sup> (if not yet in ICU)	4/82 (5)	4/25 (16)	9/79 (11)	1/21 (5)
Length of hospital stay after bacteremia onset (median, IQR)	22 (10-38)	13 (8-24)	16 (8-36)	14 (6-30)
In-hospital mortality	34/130 (26)	10/36 (28)	38/104 (37)	16/27 (59)
Mortality before day +30 <sup>a</sup>	35/130 (27)	12/36 (33)	40/104 (38)	13/27 (48)

This table presents a selection of recorded variables. A full overview is available in Supplementary Table 2.

Abbreviations: ICU, intensive care unit; IQR, interquartile range.

<sup>a</sup> Day 0 is the day of the index blood culture of the ARE/VRE bacteremia episode.



**Table 2. Regression models for 30-day mortality**

	Unadjusted models			Combined adjusted models		
	Combined	Netherlands	Denmark	Main analysis	Sensitivity analysis	Therapy added
<i>No of observations</i>	297	166	131	297	295	297
<i>No of events</i>	100	47	53	100	99	100
<i>No of variables</i>	1	1	1	5	8	6
<i>Events to variables</i>	100	47	53	20	12.4	16.7
Vancomycin resistance	1.27 (0.87-1.84)	1.16 (0.65-2.06)	1.37 (0.84-2.25)	1.54 (1.06-2.25)	1.49 (0.99-2.22)	1.55 (1.07-2.26)
Inappropriate therapy on day of index blood culture						2.79 (0.99-7.86)

This table presents risk ratios (RR, with 95% CI) for 30-day mortality for the exposure of interest (*vancomycin resistance*), with and without adjustment for confounding variables, and with and without the intermediate variable *inappropriate therapy on day of index blood culture*. In the Supplementary Material, the adjustment procedure is described. Combined models include data from both the Netherlands and Denmark.

**Table 3. Regression models for one-year follow-up for mortality**

	Unadjusted models			Combined adjusted models	
	Combined	Netherlands	Denmark	Main analysis	Sensitivity analysis
<i>No of observations</i>	297	166	131	294	297
<i>No of events</i>	170	90	80	170	170
<i>No of variables</i>	1	1	1	12	7
<i>Events to variables</i>	170	90	80	14.2	24.3
Vancomycin resistance	1.18 (0.84-1.65)	0.91 (0.53-1.55)	1.51 (0.97-2.36)	1.25 (0.80-1.98)	1.46 (0.95-2.25)

This table presents hazard ratios (HR, with 95% CI) for mortality (follow-up of 1 year with censoring) for the exposure of interest (*vancomycin resistance*), with and without adjustment for confounding variables. In the Supplementary Material, the adjustment procedure is described. Combined models include data from both the Netherlands and Denmark.

**Table 4. Overview of antibiotic therapy for VRE and matched ARE bacteremias**

	End of day 0 <sup>a</sup>				End of day +3 <sup>a</sup>			
	ARE		VRE		ARE		VRE	
	NL, n/N with data (%)	DK, n/N with data (%)	NL, n/N with data (%)	DK, n/N with data (%)	NL, n/N with data (%)	DK, n/N with data (%)	NL, n/N with data (%)	DK, n/N with data (%)
<b>Deceased</b>	<b>1/130 (1)</b>	<b>2/104 (2)</b>	<b>1/36 (3)</b>	<b>1/27 (4)</b>	<b>12/130 (9)</b>	<b>13/104 (12)</b>	<b>4/36 (11)</b>	<b>4/27 (15)</b>
<b>Censored<sup>b</sup></b>					<b>1/130 (1)</b>			
<b>Discharged</b>	<b>1/130 (1)</b>			<b>1/27 (4)</b>	<b>5/130 (4)</b>	<b>1/104 (1)</b>	<b>1/36 (3)</b>	<b>2/27 (7)</b>
<b>E. faecium-covering therapy</b>	<b>10/129 (8)</b>	<b>5/102 (5)</b>	<b>13/35 (37)</b>	<b>7/26 (27)</b>	<b>76/117 (65)</b>	<b>82/91 (90)</b>	<b>20/32 (62)</b>	<b>22/23 (96)</b>
- vancomycin iv	9/129 (7)	5/102 (5)	12/35 (34)	5/26 (19)	72/117 (62)	79/91 (87)	8/32 (25)	2/23 (9)
- linezolid iv			1/35 (3)	1/26 (4)	1/117 (1)	1/91 (1)	6/32 (19)	7/23 (30)
- daptomycin iv + linezolid iv								10/23 (43)
- teicoplanin iv	1/129 (1)				2/117 (2)		4/32 (12)	
- linezolid po				1/26 (4)			2/32 (6)	2/23 (9)
- daptomycin iv						2/91 (2)		
- vancomycin intrathecally					1/117 (1)			
- linezolid iv + tigecyclin iv								1/23 (4)
<b>Appropriate therapy</b>	<b>10/129 (8)</b>	<b>5/102 (5)</b>	<b>1/35 (3)</b>	<b>2/26 (8)</b>	<b>76/117 (65)</b>	<b>82/91 (90)</b>	<b>12/32 (38)</b>	<b>20/23 (87)</b>
<b>Appropriate therapy or central line removed</b>	<b>12/129 (9)</b>	<b>5/102 (5)</b>	<b>2/35 (6)</b>	<b>2/26 (8)</b>	<b>76/117 (65)</b>	<b>82/91 (90)</b>	<b>12/32 (38)</b>	<b>20/23 (87)</b>

Abbreviations: DK, Denmark; iv, intravenously; NL, Netherlands; po, orally.

<sup>a</sup> Day 0 is the day of the index blood culture of the ARE/VRE bacteremia episode.

<sup>b</sup> One Dutch patient with ARE bacteremia was censored for the assessment of antibiotic therapy (not for mortality) due to transfer to another hospital.

**Table 5. Regression models for 30-day mortality evaluating appropriateness of therapy**

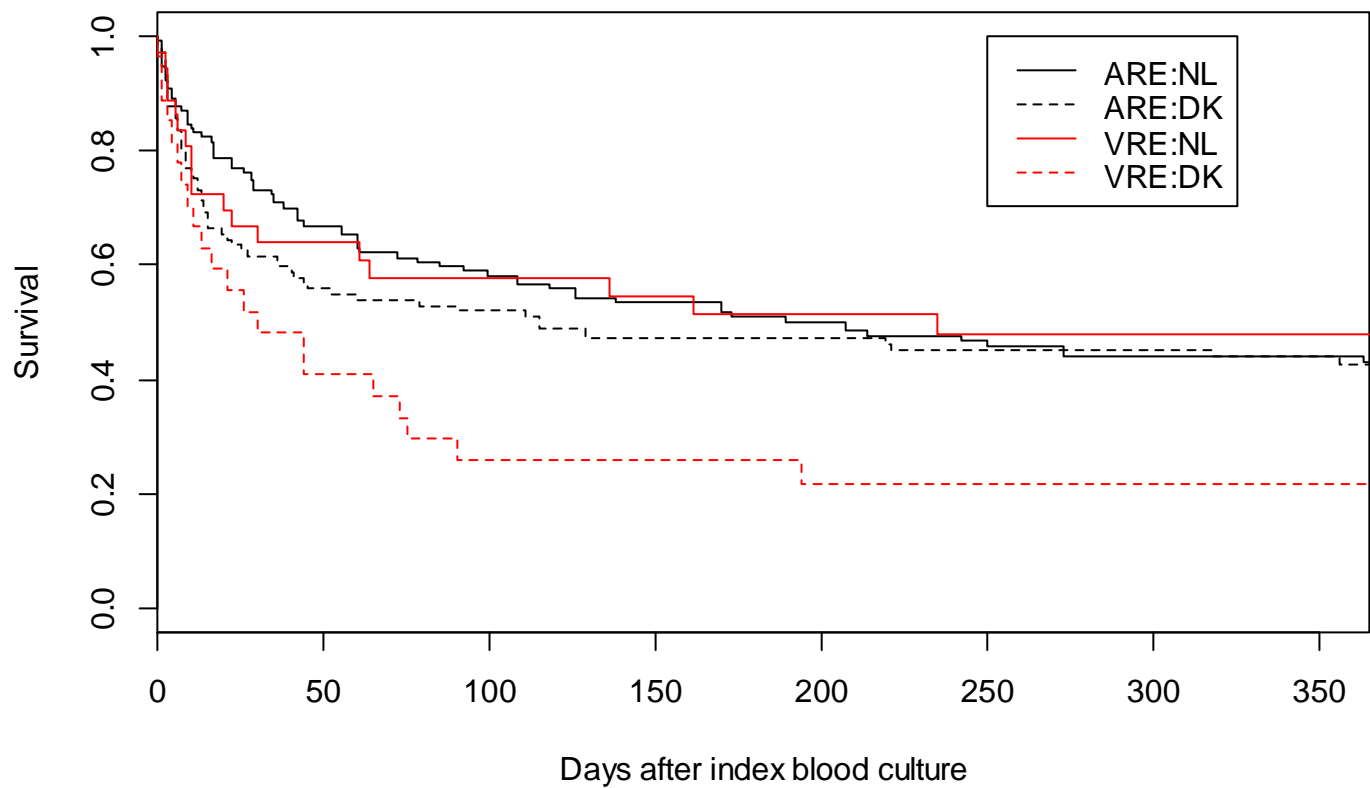
	<b>Baseline after day ...</b>		
	<b>0</b>	<b>+1</b>	<b>+2</b>
	<b>Unadjusted models</b>		
<i>No of observations</i>	289	283	274
<i>No of events</i>	95	88	80
ARE – on inappropriate therapy	Reference	Reference	Reference
ARE – on appropriate therapy	0.41 (0.10-1.74)	0.82 (0.45-1.51)	1.01 (0.57-1.79)
VRE – on inappropriate therapy	1.24 (0.82-1.85)	1.15 (0.71-1.88)	1.40 (0.73-2.70)
VRE – on appropriate therapy	NA	1.53 (0.68-3.46)	1.32 (0.64-2.71)
	<b>Adjusted models – main analysis</b>		
<i>No of observations</i>	289	276	268
<i>No of events</i>	95	87	80
<i>No of variables</i>	9	14	14
<i>Events to variables</i>	10.6	6.2	5.7
ARE – on inappropriate therapy	Reference	Reference	Reference
ARE – on appropriate therapy	0.33 (0.08-1.40)	0.79 (0.43-1.45)	0.82 (0.47-1.43)
VRE – on inappropriate therapy	1.69 (1.09-2.61)	2.01 (1.13-3.57)	2.43 (0.94-6.33)
VRE – on appropriate therapy	NA	5.79 (1.43-23.40)	1.73 (0.83-3.61)
	<b>Adjusted models – sensitivity analysis</b>		
<i>No of observations</i>	285	278	270
<i>No of events</i>	94	87	80
<i>No of variables</i>	16	17	15
<i>Events to variables</i>	5.9	5.1	5.3
ARE – on inappropriate therapy	Reference	Reference	Reference
ARE – on appropriate therapy	0.31 (0.08-1.13)	0.69 (0.38-1.28)	0.88 (0.42-1.84)
VRE – on inappropriate therapy	1.42 (0.79-2.55)	1.81 (0.99-3.31)	2.38 (0.99-5.74)
VRE – on appropriate therapy	NA	2.60 (0.55-12.32)	2.12 (0.88-5.09)

This table presents risk ratios (RR, with 95% CI) for 30-day mortality for the interaction between *vancomycin resistance* and *appropriateness of therapy*. The baseline for these models is positioned on three different moments, namely the end of the day of the index blood culture

(day 0), the end of the day after (day +1), and the end of the day thereafter (day +2). This implies that separately for each baseline, patients having died (or censored, as antibiotic therapy could not be fully assessed) before this moment were removed from the dataset.

*Appropriateness of therapy* refers to the antibiotic therapy provided at baseline. RRs are presented with and without adjustment for confounding variables. In the Supplementary Material, the adjustment procedure is described. All models include data from both the Netherlands and Denmark.

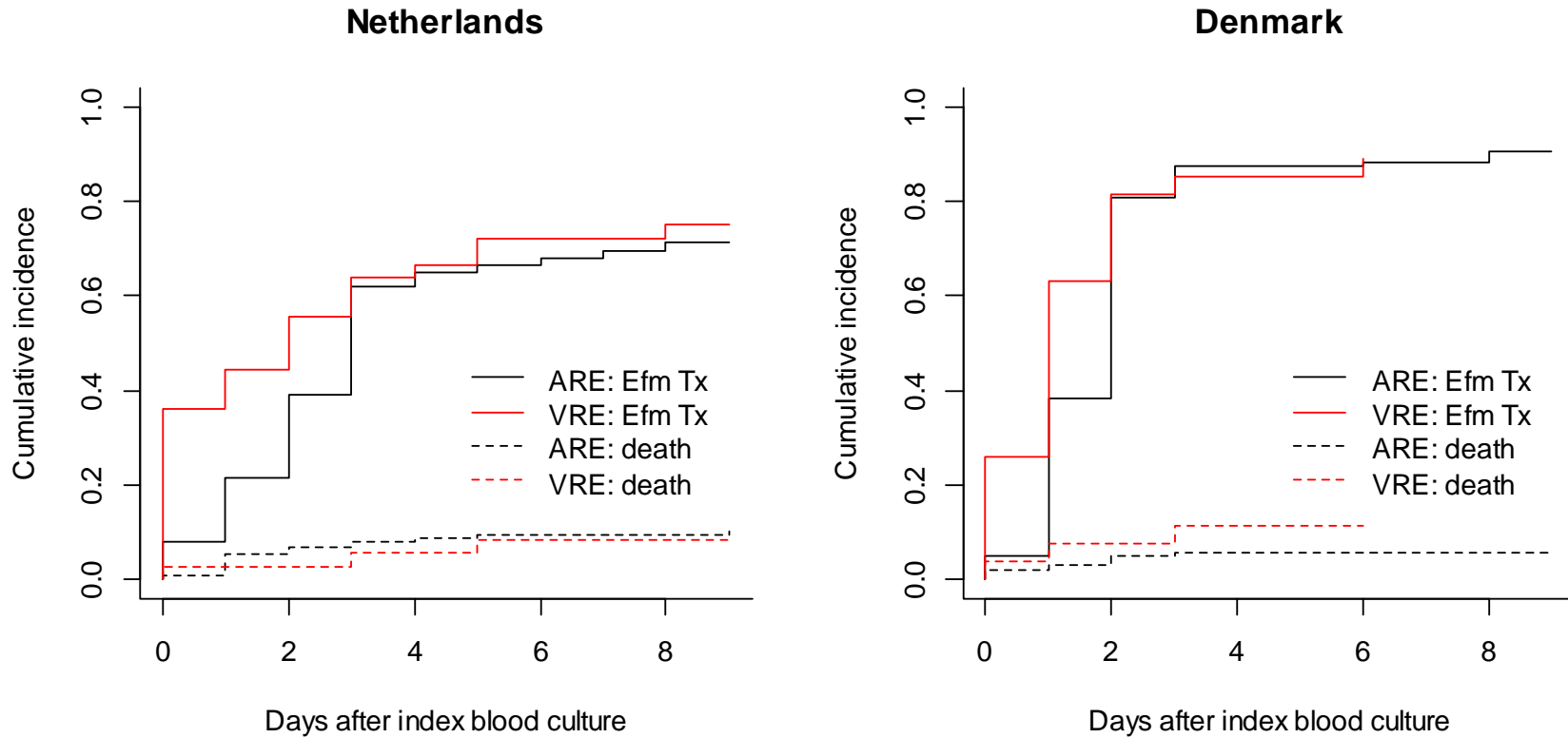
Figure 1. One-year survival curve for VRE and matched ARE bacteremias



Kaplan-Meier plot indicating one-year survival after ARE/VRE bacteremia, stratified on *vancomycin resistance* and *country*.

Abbreviations: NL, Netherlands, DK, Denmark.

Figure 2. Time to *Enterococcus faecium*-covering antibiotic therapy for VRE and matched ARE bacteremias

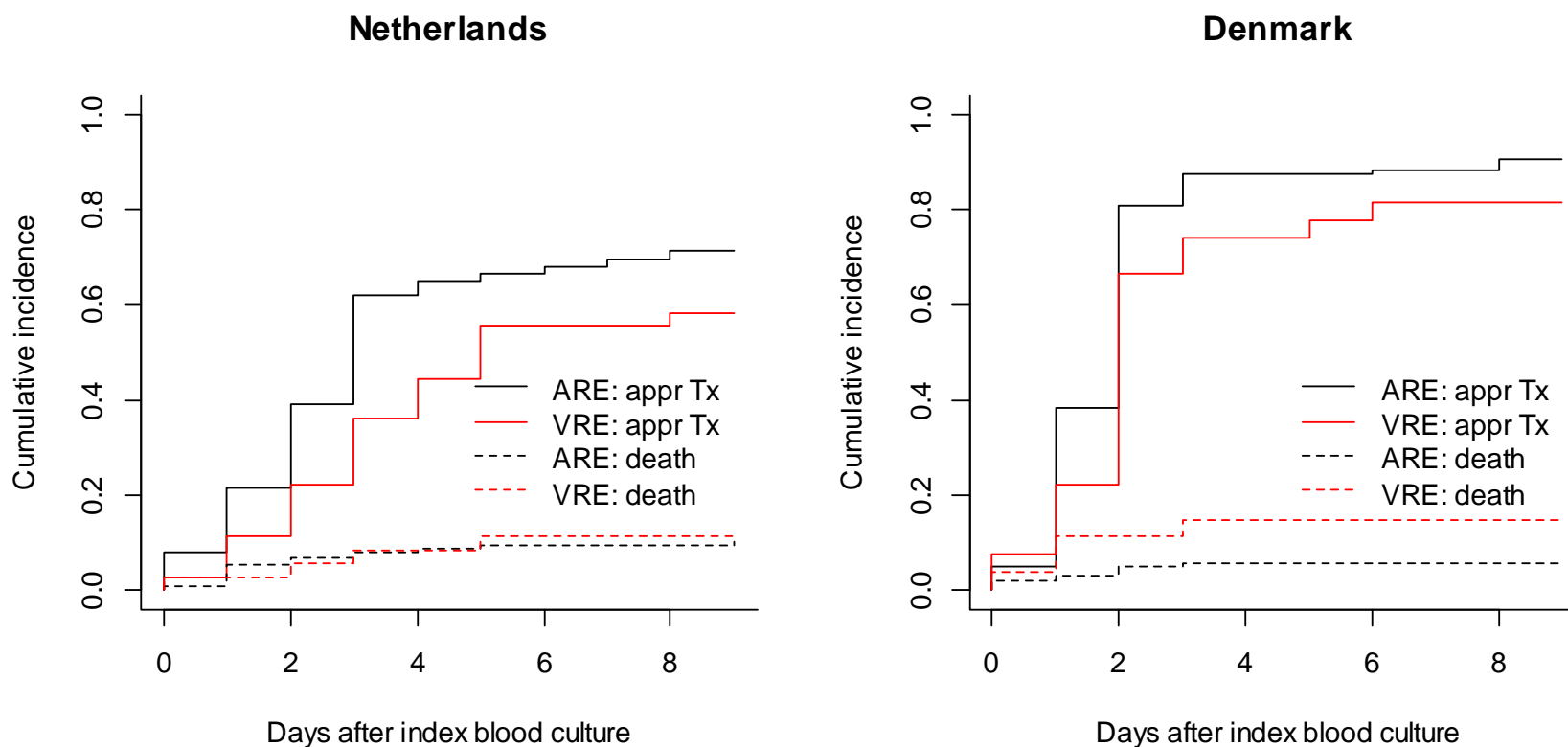


Cumulative incidence plots of initiation of *E. faecium*-covering antibiotic therapy after onset of bacteremia and its competing risk mortality before onset of *E. faecium*-covering antibiotic therapy, stratified on *vancomycin resistance*.

Abbreviations: Efm Tx, *Enterococcus faecium*-covering therapy.



Figure 3. Time to appropriate antibiotic therapy for VRE and matched ARE bacteremias



Cumulative incidence plots of initiation of appropriate antibiotic therapy after onset of bacteremia and its competing risk mortality before onset of appropriate antibiotic therapy, stratified on *vancomycin resistance*.

Abbreviations: appr Tx, appropriate therapy.