

1 **TITLE: Early outcomes of tocilizumab in adults hospitalized with severe COVID-19 –**  
2 **SUBTITLE: An initial report from the Vall d’Hebron COVID-19 prospective cohort**  
3 **study.**

4  
5 **Adrián Sánchez-Montalvá, Júlia Sellarés-Nadal, Juan Espinosa-Pereiro, Nuria**  
6 **Fernández-Hidalgo, Santiago Pérez-Hoyos, Fernando Salvador, Xavier Durà, Marta**  
7 **Miarons, Andrés Antón, Simeón Eremiev-Eremiev, Abiu Sempere-González, Arnau**  
8 **Monforte-Pallarés, Pau Bosch-Nicolau, Salvador Augustin, Júlia Sampol, Alfredo**  
9 **Guillén-del-Castillo, Benito Almirante on behalf of the Vall d’Hebron COVID-19**  
10 **working group.**

11

12 **Adrián Sánchez-Montalvá**  
13 Infectious Diseases Department, Tropical Diseases and Global Health Unit, Vall d’Hebron  
14 University Hospital, 08035, Barcelona, Spain  
15 Consulting physician

16

17 **Júlia Sellarés-Nadal**  
18 Internal Medicine and Infectious Diseases Department, Vall d’Hebron University Hospital,  
19 08035, Barcelona, Spain  
20 Resident

21

22 **Juan Espinosa-Pereiro**  
23 Infectious Diseases Department, Tropical Diseases and Global Health Unit, Vall d’Hebron  
24 University Hospital, 08035, Barcelona, Spain  
25 Assistant physician

26

27 **Nuria Fernández-Hidalgo**  
28 Infectious Diseases Department, Cardiovascular Infections Unit, Vall d’Hebron University  
29 Hospital, 08035, Barcelona, Spain  
30 Consulting physician

31

32 **Santiago Pérez-Hoyos**  
33 Statistics and Bioinformatics Unit, Vall d’Hebron Research Institute, 08035, Barcelona,  
34 Spain  
35 Statistician

36

37 **Fernando Salvador**  
38 Infectious Diseases Department, Tropical Diseases and Global Health Unit, Vall d'Hebron  
39 University Hospital, 08035, Barcelona, Spain  
40 Consulting physician  
41

42 **Xavier Durà**  
43 Internal Medicine and Infectious Diseases Department, Vall d'Hebron University Hospital,  
44 08035, Barcelona, Spain  
45 Resident  
46

47 **Marta Miarons**  
48 Hospital Pharmacy, Vall d'Hebron University Hospital, 08035, Barcelona, Spain  
49 Pharmacist  
50

51 **Andrés Antón**  
52 Microbiology Department, Vall d'Hebron University Hospital, 08035, Barcelona, Spain  
53 Microbiologist.  
54

55 **Simeón Eremiev-Eremiev,**  
56 Internal Medicine and Infectious Diseases Department, Vall d'Hebron University Hospital,  
57 08035, Barcelona, Spain  
58 Resident  
59

60 **Abiu Sempere-González,**  
61 Internal Medicine and Infectious Diseases Department, Vall d'Hebron University Hospital,  
62 08035, Barcelona, Spain  
63 Resident  
64

65 **Arnau Monforte-Pallarés,**  
66 Internal Medicine and Infectious Diseases Department, Vall d'Hebron University Hospital,  
67 08035, Barcelona, Spain  
68 Resident  
69

70 **Pau Bosch-Nicolau,**  
71 Infectious Diseases Department, Tropical Diseases and Global Health Unit, Vall d'Hebron  
72 University Hospital, 08035, Barcelona, Spain  
73 Assistant physician  
74

75 **Salvador Augustin,**  
76 Internal Medicine and Hepatology, Vall d'Hebron University Hospital, 08035, Barcelona,  
77 Spain  
78 Consulting physician  
79

80 **Júlia Sampol,**  
81 Pneumology, Vall d'Hebron University Hospital, 08035, Barcelona, Spain  
82 Assistant physician  
83

84 **Alfredo Guillén-del-Castillo,**  
85 Internal Medicine, Systemic Diseases Unit, Vall d’Hebron University Hospital, 08035,  
86 Barcelona, Spain  
87 Consulting physician

88  
89 **Benito Almirante**  
90 Infectious Diseases Department, Vall d’Hebron University Hospital, 08035, Barcelona,  
91 Spain  
92 Head of department, associate professor  
93

94 **Address correspondence to:**

95 Adrián Sánchez-Montalvá, MD, PhD  
96 ORCID: 0000-0002-2194-5447  
97 Address: Passeig Vall d’Hebron, 119-129. Hospital Universitario Vall d’Hebron. Edificio  
98 General. Enfermedades Infecciosas. 6ª planta. CP 08035. Barcelona. Spain.  
99 e-mail: [adsanche@vhebron.net](mailto:adsanche@vhebron.net) . Telephone number: +34 93 274 6090 Fax number: +34 93  
100 489 40 91.

101

102 **Contributions:**

103 Adrián Sánchez-Montalvá: conceptualization, database design, data curation, statistical  
104 analysis, first draft writing  
105 Júlia Sellarés-Nadal: data collection, draft review  
106 Juan Espinosa-Pereiro: database design, data curation, draft review  
107 Nuria Fernández-Hidalgo: conceptualization, statistical analysis, draft review  
108 Santiago Pérez-Hoyos: data curation, statistical analysis  
109 Fernando Salvador: draft review  
110 Xavier Durà: data collection, draft review  
111 Marta Miarons: data collection, draft review  
112 Andrés Antón: microbiological methods, data collection, draft review  
113 Simeón Eremiev-Eremiev: data collection, draft review  
114 Abiu Sempere-González: data collection, draft review  
115 Arnau Monforte-Pallarés: data collection, draft review  
116 Pau Bosch-Nicolau: data collection, draft review  
117 Salvador Augustin: data collection, draft review  
118 Júlia Sampol: data collection, draft review  
119 Alfredo Guillén-del-Castillo: data collection, draft review  
120 Benito Almirante: guarantor, draft review  
121

122 **License for publication:**

123 The Corresponding Author has the right to grant on behalf of all authors and does grant on  
124 behalf of all authors, a worldwide licence to the Publishers and its licensees in perpetuity,  
125 in all forms, formats and media (whether known now or created in the future), to i) publish,  
126 reproduce, distribute, display and store the Contribution, ii) translate the Contribution into  
127 other languages, create adaptations, reprints, include within collections and create  
128 summaries, extracts and/or, abstracts of the Contribution, iii) create any other derivative

129 work(s) based on the Contribution, iv) to exploit all subsidiary rights in the Contribution, v)  
130 the inclusion of electronic links from the Contribution to third party material where-ever it  
131 may be located; and, vi) licence any third party to do any or all of the above.

132

133 **Conflicts of interest**

134 All authors have completed the ICMJE uniform disclosure form and declare: no support  
135 from any organisation for the submitted work; no financial relationships with any  
136 organisations that might have an interest in the submitted work in the previous three years;  
137 no other relationships or activities that could appear to have influenced the submitted work.

138

139

140

141 **ABSTRACT**

142 **Background:** Modulation of the immune system to prevent lung injury is being widely  
143 used against the new coronavirus disease (COVID-19) despite the scarcity of evidence.

144 **Methods:** We report preliminary results from the Vall d'Hebron prospective cohort study  
145 at Vall d'Hebron University Hospital, in Barcelona (Spain), including all consecutive  
146 patients who had a confirmed infection with the severe acute respiratory syndrome  
147 coronavirus-2 (SARS-CoV-2) and who were treated with tocilizumab until March 25<sup>th</sup>. The  
148 primary endpoint was mortality at 7 days after tocilizumab administration. Secondary  
149 endpoints were admission to the intensive care unit, development of ARDS and respiratory  
150 insufficiency among others.

151 **Results:** 82 patients with COVID-19 received at least one dose of tocilizumab. The mean  
152 ( $\pm$  SD) age was 59.1 (19.8) years, 63% were male, 22% were of non-Spanish ancestry, and  
153 the median (IQR) age-adjusted Charlson index at baseline was 3 (1-4) points. Respiratory  
154 failure and ARDS developed in 62 (75.6%) and 45 (54.9%) patients, respectively. Median  
155 time from symptom onset to ARDS development was 8 (5-11) days. The median time from  
156 symptom onset to the first dose of tocilizumab was 9 (7-11) days. Mortality at 7 days was  
157 26.8%. Hazard ratio for mortality was 3.3; 95% CI, 1.3 to 8.5 (age-adjusted hazard ratio for  
158 mortality 2.1; 95% CI, 0.8 to 5.8) if tocilizumab was administered after the onset of ARDS.

159 **Conclusion:** Time from lung injury onset to tocilizumab administration may be critical to  
160 patient recovery. Our preliminary data could inform bedside decisions until more data from  
161 clinical trials becomes available.

162

163

164 **INTRODUCTION:**

165 Coronavirus disease 2019 (COVID-19) is a novel illness caused by severe acute respiratory  
166 syndrome coronavirus-2 (SARS-CoV-2). It was first reported in December 2019 in Hubei  
167 province, China.<sup>1</sup> Since then, SARS-CoV-2 has rapidly spread worldwide.

168 According to the World Health Organization (WHO), as of April 13<sup>th</sup>, 2020, there has been  
169 1773084 laboratory-confirmed cases and 111652 deaths.<sup>2</sup> The case fatality rate, estimated  
170 between 2.3% and 3.3%, is highly age and underlying conditions dependent.<sup>3,4</sup> Death is  
171 mainly due to respiratory failure caused by an acute respiratory distress syndrome (ARDS).

172 As the physiopathology behind lung injury is progressively elucidated, several therapies  
173 have been proposed on the basis of pre-clinical studies and the previous experience with the  
174 severe acute respiratory syndrome coronavirus-1 (SARS-CoV-1) and the Middle East  
175 Respiratory Syndrome Coronavirus (MERS-CoV).<sup>5,6</sup> Many of them are being used off label  
176 in a desperate attempt to improve patient outcomes, including antiviral therapies,  
177 coagulation modifying drugs and immune-modulating therapies.<sup>7-11</sup>

178 In COVID-19, an excessive immune response inducing disproportionate release of cytokine  
179 and hyperinflammation has been proposed as cause for the lung damage mimicking a  
180 secondary haemophagocytic lymphohistiocytosis.<sup>12</sup> Host-directed therapies have immune-  
181 modulating properties with higher precision than steroids and other immune-modulating  
182 therapies.<sup>13</sup> Tocilizumab is a humanized monoclonal antibody that inhibits interleukin-6  
183 (IL-6) receptor with a well-known safety profile approved for the treatment of rheumatoid  
184 arthritis and, since 2017, also approved for the treatment of chimeric antigen receptor  
185 (CAR) T cell-induced severe or life-threatening cytokine release syndrome (CRS).<sup>14,15</sup> It  
186 has been used with promising results in small retrospective cohort studies of SARS-CoV-2  
187 infected patients in China.<sup>9,16</sup> The efficacy of other host-directed therapies targeting

188 hyperinflammation is being assessed under randomized clinical trial conditions for severe

189 SARS-CoV-2 infected patients.<sup>17,18</sup>

190 However, a proper characterization of the subset of patients who will benefit most from

191 host-directed therapies and defining the precise timing for host-directed therapies

192 administration has not yet been performed and is critical to allocate limited drug stocks and

193 reduce COVID-19 associated mortality. We aim to describe the characteristics of SARS-

194 CoV-2 infected patients treated with tocilizumab and define poor outcome risk factors.

195     **METHODS**

196     **Study setting and population**

197     The Vall d’Hebron COVID-19 Prospective Cohort Study includes all consecutive adult  
198     patients ( $\geq 18$  years old) diagnosed with COVID-19 at Vall d’Hebron University Hospital,  
199     a 1100-beds public tertiary care hospital in Barcelona, Spain. For this study we selected the  
200     subgroup of patients with laboratory-confirmed COVID-19 and radiologically confirmed  
201     pneumonia who received at least one dose of tocilizumab. Identification and inclusion of  
202     patients receiving tocilizumab was assured from the Pharmacy Department registry.

203     **Standard of care and tocilizumab administration criteria**

204     At admission, all patients were initially evaluated with chest radiography and blood test  
205     including cell count, coagulation study, biochemistry and inflammatory parameters.  
206     Treatment with lopinavir/ritonavir, azithromycin and hydroxychloroquine was initiated  
207     according to Vall d’Hebron University Hospital protocol. Tocilizumab was considered as  
208     additional treatment in patients with the following criteria: 1) respiratory failure defined as  
209     a ratio of arterial oxygen tension to fraction of inspired oxygen (PaO<sub>2</sub>/FiO<sub>2</sub> ratio) of  $<300$ ,  
210     a ratio of arterial oxygen saturation measured by pulse oximetry to fraction of inspired  
211     oxygen (SpO<sub>2</sub>/FiO<sub>2</sub> ratio) of  $<315$  or pO<sub>2</sub>  $<60$ mmHg or oxygen saturation measured by  
212     pulse oximetry less than 90% when breathing room air or rapidly progressive clinical  
213     worsening according to treating physician and 2) interleukin-6 (IL-6) levels  $>40$ pg/mL  
214     (reference 0-4.3pg/mL) or a D-dimer levels  $> 1500$  ng/mL. Two weight bands were  
215     considered for tocilizumab dosing. Patients over 75kg received 600mg, otherwise 400mg  
216     was the preferred dose. A second dose was considered in patients with a poor early  
217     response. Patients with liver enzymes 5 times over the upper limit of normality or  
218     concomitant severe bacterial infection were not eligible for tocilizumab treatment.



219 **Data sources**

220 Data were collected retrospectively from the medical charts of the patients from the 13<sup>th</sup> of  
221 March, 2020 to the 18<sup>th</sup> of March, 2020, when the protocol was submitted to the  
222 institutional review board, and prospectively thereafter. Inclusion and follow-up are still  
223 ongoing. The cut-off data for inclusion in this sub-study was March 25<sup>th</sup>, 2020. All patients  
224 included were followed directly (admitted to medical or intensive care unit wards) for at  
225 least 7 days.

226 Laboratory-confirmed case was defined as a patient with a real-time reverse-transcriptase-  
227 polymerase-chain-reaction (RT-PCR) SARS-CoV-2 positive result in any respiratory  
228 sample (nasopharyngeal swab, sputum, bronchoalveolar lavage or aspirate, tracheal  
229 aspirate).

230 We collected sociodemographic characteristics, past medical history, Charlson comorbidity  
231 score, concomitant medication, current therapy, adverse drug events (graded according to  
232 the Common Terminology Criteria for Adverse Events, CTCAE, version 5), blood test  
233 results, imaging studies, microbiological tests other than SARS-CoV-2 RT-PCR on  
234 respiratory samples when available, and supportive measures needed. Vital signs,  
235 symptoms and physical examination were evaluated on admission, at 48h and weekly  
236 during hospital admission. Laboratory, microbiology and imaging studies were performed  
237 on admission and thereafter according to the clinical care needs of each patient. Laboratory  
238 assessments consisted of a complete blood count, coagulation testing including D-dimer  
239 measurement, liver and renal function, electrolyte profile, and inflammatory profile  
240 including C-reactive protein, fibrinogen, ferritin and IL-6. All radiographs were reviewed  
241 by the investigators and computed tomography (CT) scans were recorded according to the  
242 radiology department reports. The severity of the COVID-19 was measured with the

243 CURB-65 scale for community acquired pneumonia and other scales.<sup>19,20</sup> Data was  
244 recorded in the Research Electronic Data Capture software (REDCap, Vanderbilt  
245 University).

#### 246 **Laboratory confirmation**

247 From the onset of the outbreak until 15<sup>th</sup> of March the microbiological diagnosis was based  
248 on a homebrew RT-PCR assay targeting two viral targets (N1 and N2) into viral  
249 nucleocapsid (N) gene and one into envelope (E) gene of SARS-CoV-2, as well as the  
250 human RNase P (RP) gene as an internal control of the whole process, according to the  
251 CDC and ECDC Real-Time RT-PCR Diagnostic Panels with minor modifications.<sup>21</sup> Since  
252 March 15<sup>th</sup>, commercial Allplex™ 2019-nCoV multiplex RT-PCR (Seegene, South Korea)  
253 were used for the detection of three viral targets (E; N; and, RNA-dependent RNA  
254 polymerase, RdRp) and an internal control. First SARS-CoV-2 laboratory-confirmations  
255 were confirmed by RdRp sequencing.<sup>22,23</sup> Total nucleic acids (DNA/RNA) were extracted  
256 from respiratory specimens using NucliSENS easyMAG (BioMerieux, France)  
257 and STARMag Universal Cartridge Kit (Seegene, South Korea) according to the  
258 manufacturer's instructions. All microbiological procedures were carried out in the  
259 laboratory under Biosafety Level 2 conditions.

#### 260 **Study outcomes**

261 The primary simple endpoint was defined as death at 7 days after first dose of tocilizumab.  
262 Secondary outcomes were admission to Intensive Care Unit (ICU), acute Respiratory  
263 Distress Syndrome (ARDS) and respiratory insufficiency progression. We also assessed  
264 acute myocardial infarction, septic shock, acute kidney injury and secondary infections.  
265 Berlin criteria for the ARDS were adapted, as many of the patients did not have an

266 available arterial O<sub>2</sub> pressure due to the overwhelming volume of admitted patients that  
267 precluded us from performing arterial blood samples to all patients. Instead, we used  
268 oxygen saturation by pulse oximetry and its correlation to the inspired fraction of oxygen  
269 (SpO<sub>2</sub>/FiO<sub>2</sub> ratio < 315).<sup>24,25</sup> One patient died a few hours after receiving tocilizumab and  
270 was excluded from the primary endpoint analysis.

### 271 **Statistical analysis**

272 Continuous variables are expressed as mean and standard deviation or medians and  
273 interquartile range, as appropriate. Categorical variables were summarized as absolute  
274 number and percentages. Comparisons among groups was performed with Chi squared test  
275 and Fisher's test for categorical variables; and Student's T test and Mann-Whitney U test  
276 for continuous variables. Box plots and bar plots are also provided for some associations.  
277 Mortality in the cohort was described with the use of Kaplan-Meier analysis. Tests were  
278 considered significant when the two-tailed p-value was <0.05. We did not correct for  
279 multiple comparisons; hence, the widths of the confidence intervals should not be  
280 interpreted as definitive for the associations with the outcomes. Association between time  
281 to tocilizumab administration and mortality were assessed by means of Cox proportional  
282 hazards regression. Missing urea and bilirubin levels on admission were assumed normal  
283 for CURB-65 and SOFA calculation; no other imputation was made for missing data.  
284 Analysis was performed with Stata 15.1 software (StataCorp).

285

### 286 **Study oversight**

287 The study was designed and conducted by the investigators from the Vall d'Hebron  
288 COVID-19 Prospective Cohort Study. Data were collected, debugged, analysed and  
289 interpreted by the authors. The institutional review board provided ethical clearance (local

290 review board code number: PR(AG)183/2020). Patients were asked for an oral consent. The  
291 institutional review board granted an informed consent waiver if patients were unable to  
292 give oral consent. The manuscript was prepared according to the STROBE guidelines  
293 recommendations. All the authors reviewed the manuscript and vouch for the accuracy and  
294 completeness of the data and for the adherence of the study to the protocol.

295

### 296 **Patient and Public Involvement**

297 Due to the current emergency of the SARS-CoV-2 pandemic, patients were not involved in  
298 the design and the conduct of the study, including the selection of the outcomes and  
299 recruitment criteria.

300

301 **RESULTS:**

302 **Demographic and clinical characteristics**

303 Since the onset of the COVID-19 outbreak until March 25<sup>th</sup>, 3242 respiratory-derived  
304 samples have been requested from our institution for COVID-19 diagnosis. Samples were  
305 requested from the emergency room and hospitalization wards, as well as from the health  
306 care worker surveillance strategy plan. From them, 941 were positive (29%). During this  
307 period, 82 SARS-CoV-2 infected patients received at least one dose of tocilizumab. The  
308 mean ( $\pm$ SD) age was 59.1 ( $\pm$ 19.8) years (95% Confidence Interval 54.8-63.5). Fifty-two  
309 patients were male (63.5%). Eighteen (21.9%) patients were born abroad, 13 (16.1%) in  
310 Latin America, 3 (3.7%) in Eastern Europe and 2 (2.4%) in North Africa. The mean ( $\pm$ SD)  
311 duration of symptoms before hospital admission was 6.7 ( $\pm$ 4.4) days. Fever and cough were  
312 the main symptoms on admission, occurring in 75 (91.5%) and 71 (86.6%) respectively.  
313 Thirty-three (40.3%) patients were former or active tobacco smokers. Coexisting conditions  
314 were as follows: 32 (39.0%) had hypertension, 19 (23.5%) had lung diseases (2 (2.4%)  
315 asthma, 6 (7.3%) chronic obstructive pulmonary disease among others), 17 (20.7%) had  
316 obesity, 16 (19.5%) had diabetes mellitus, 11 (13.6%) had chronic kidney disease, 5 (6.1%)  
317 a history of cardiac failure, 1 (1.2%) had cirrhosis. Ten (12.5%) patients were  
318 immunosuppressed because of different conditions. Seventy-seven (95.1%) patients had a  
319 Barthel scale index of 100 points previous to hospital admission. Table 1 shows  
320 demographic and clinical characteristics at baseline.

321 **Laboratory and Radiologic finding**

322 On admission, mean ( $\pm$ SD) white cell count was 9.2 (10.4) with 17 (21.3%) patients having  
323 more than 10000 per cubic millilitre white cells. Lymphocytopenia ( $<$ 1000 cells per cubic  
324 millilitre) was present in 46 (57.5%) patients. Interleukin-6 median (IQR) plasma level on

325 admission was 74.8 (49.4-120.0) ng/ml. Liver enzymes were below five times the upper  
326 normal value in all patients. Pneumonia was radiologically proven in all patients on  
327 admission or during follow up. Tables 2 and 3 describe laboratory and radiologic and  
328 laboratory findings on admission and during follow up.

### 329 **Microbiologic results**

330 All included patients had a positive RT-PCR for SARS-CoV-2 in a respiratory-derived  
331 sample. On admission, 2 patients out of 56 had a positive pneumococcal urinary antigen  
332 result. Sputum samples from 13 patients were sent on admission, bacterial growth was  
333 demonstrated in 3 samples, two with *Haemophilus influenzae* that were considered  
334 clinically significant and one was deemed contamination with oral bacteria. During the first  
335 7 days follow up, 2 more positive results were retrieved: one Extended-Spectrum Beta-  
336 Lactamase (ESBL)-producing *Escherichia coli* (considered clinically significant) and one  
337 *Staphylococcus epidermidis* (considered non-clinically significant). Blood samples from 65  
338 patients were sent, and one positive bacterial growth (coagulase-negative *Staphylococcus*)  
339 was observed, although considered a contamination. Detailed microbiologic data are shown  
340 in Table 3.

### 341 **Oxygen supplementation and secondary outcomes.**

342 Table 4 shows oxygen saturation, oxygen supplementation and ventilation support. On  
343 admission, mean FiO<sub>2</sub> oxygen supplementation was 0.36 ( $\pm$ 0.26) and mean oxygen  
344 saturation was 94% ( $\pm$ 4.39). Regarding oxygen supplementation devices on admission, 34  
345 (41.5%) patients were on oxygen supplementation: two (5.8%) patients were on nasal  
346 cannulas, 22 (64.7%) were using face masks, 9 (26.5%) patients were using high oxygen  
347 supplementation devices and 1 (2.9%) patient required endotracheal intubation with  
348 mechanical ventilation. Over time, SpO<sub>2</sub>/FiO<sub>2</sub> ratio deteriorated from a median (IQR) of

349 428 (316.1-454.8) on admission, 271.4 (158.3-361.5) at 48 hours and 230.2 (118.8-346.4)  
350 at 7 days follow up ( $p < 0.001$ ). Fifty-five (69.6%) patients required intensive oxygen  
351 therapy, including high flow oxygen delivery systems, high flow nasal cannula, non-  
352 invasive mechanical ventilation or invasive ventilation during the study period. Median  
353 (IQR) days on high flow oxygen delivery systems, high flow nasal cannula, non-invasive  
354 mechanical ventilation or invasive ventilation before progression to other intensive oxygen  
355 therapy, outcome attainment or data censoring were 2.0 (1.0-3.0), 4 (2.0-6.0), 3.0 (2.0-4.0)  
356 and 9 (9.0-9.0) respectively. The median (IQR) days from admission to first intensive  
357 oxygen therapy was 2.0 (1.0-4.5). Only one (1.2%) patient required vasopressor therapy  
358 due to hypotension. No patient required renal replacement therapy. Respiratory failure and  
359 ARDS developed in 62 (75.6%) and 45 (54.9%) patients, respectively. Median (IQR) days  
360 from symptoms to respiratory failure and ARDS were 8 (6.0-11.0) and 8 (5.0-11.0)  
361 respectively. Median (IQR) days from admission to respiratory failure and ARDS were 1  
362 (0.0-3.0) and 2 (1.0-4.0) respectively. Secondary outcomes can be found in Table 5.

### 363 **Tocilizumab treatment and concomitant treatment**

364 Eighty-one (98.9%) patients received hydroxychloroquine, 63 (76.8%) lopinavir/ritonavir,  
365 21 (25.61%) darunavir/cobicistat, and 79 (96.34%) azithromycin. All patients were initially  
366 treated with antibiotic therapy, mainly ceftriaxone (77 (93.9%) patients). As expressed  
367 before, all patients received at least one dose of tocilizumab. Median (IQR) time in days  
368 from symptom onset to tocilizumab administration was 9.0 (6.0-11.0) and from admission  
369 to tocilizumab administration was 2.0 (1.0-3.0)). Other treatments include cytokine  
370 hemoadsorption therapy in 2 (2.4%) patients in ICU.

### 371 **Main outcome and mortality risk factors**

372 Table 6 summarizes main outcome in the study population. At the end of the follow up  
373 period, of the 82 patients 34 (41.5%) had been discharged, 22 (26.8%) had died, 14 (17.1%)  
374 were hospitalized in ICU, 9 (11.0%) were hospitalized in medical wards, and 3 (3.7%) had  
375 been transferred to another institution. In the univariate analysis age, age-adjusted Charlson  
376 comorbidity index, medical history of active or former solid cancer, hypertension, history  
377 of heart failure, chronic kidney disease and worse age-adjusted Charlson index at baseline  
378 were associated with increased risk of mortality (Table 7). By 7-day follow-up, the  
379 mortality rate was 4.0% per person-day (95% confidence interval [CI], 2.4% to 6.2%) by  
380 Kaplan-Meier analysis. Mortality was more frequent in patients receiving tocilizumab once  
381 ARDS was present (hazard ratio for mortality 3.3; 95% CI, 1.3 to 8.5; age-adjusted hazard  
382 ratio for mortality 2.1; 95% CI, 0.8 to 5.8)(Figure 1) or respiratory failure was present  
383 (hazard ratio for mortality 3.13; 95% CI, 1.3 to 7.8; age-adjusted hazard ratio for mortality  
384 2.4; 95% CI, 0.9 to 6.4)(Figure 2). When dividing patients according to the nearest  
385 SpO<sub>2</sub>/FiO<sub>2</sub> ratio to tocilizumab administration, mortality was higher among patients with  
386 lower SpO<sub>2</sub>/FiO<sub>2</sub> ratio (SpO<sub>2</sub>/FiO<sub>2</sub> ratio<200, 46.2%; SpO<sub>2</sub>/FiO<sub>2</sub> ratio 200-300, 16.7%;  
387 SpO<sub>2</sub>/FiO<sub>2</sub> ratio >300, 20.6%; p=0.03)(Figure 3). Distribution of the nearest SpO<sub>2</sub>/FiO<sub>2</sub>  
388 ratio to tocilizumab administration depending on outcome groups was not statistically  
389 significant (mean (SD) SpO<sub>2</sub>/FiO<sub>2</sub> ratio: 321.3 (154.7) dead, 343.1 (132.7) ICU, 396.9  
390 (96.2) alive; p=0.2)(Figure 4). No correlation was observed between nearest IL-6 levels to  
391 tocilizumab administration and main outcome (median (IQR) IL-6 levels: 79.7 (48.2-128.1)  
392 dead, 77.5 (55-120) ICU admission, 71.4 (49.4-116) alive; p=0.92). Basal characteristics of  
393 patients stratified by ARDS and respiratory failure can be found in the Supplementary  
394 Appendix.

## 395 **Safety**



396  
397 Twelve (14.63%) out of 82 patients reported a total of 14 adverse events during the follow  
398 up. Thirteen (92.9%) adverse events were considered related with lopinavir/ritonavir, 9  
399 (75.0%) patients discontinued lopinavir/ritonavir treatment due to gastrointestinal  
400 symptoms. Diarrhoea was the most common reported adverse event. Other adverse events  
401 included nausea and dysuria. There were no adverse events attributed to tocilizumab. No  
402 serious adverse events were reported during follow up, and only 2 (14.3%) were considered  
403 moderate. Eleven (91.7%) patients recovered without medical sequelae and one patient had  
404 an unknown outcome. No tocilizumab discontinuation was reported due to adverse events.  
405

406 **DISCUSSION**

407 This preliminary report from the Vall d'Hebron COVID-19 Prospective Cohort Study  
408 describes the characteristics and clinical outcomes of patients who were hospitalized in  
409 non-ICU wards and received treatment with tocilizumab. Our results show that a timely  
410 administration of immune-modulating therapies, before the onset of respiratory  
411 insufficiency or ARDS, can improve severe COVID-19 patients' outcomes with a three-  
412 fold reduction in 7-day mortality.

413 Therapies to improve outcomes of patients with COVID-19 focus on viral-directed  
414 therapies and host-directed therapies. There is still lack of evidence about the efficacy of  
415 any of these therapies, although this does not prevent physicians to use all sort of off-label  
416 therapies despite the risk of serious adverse events.<sup>26</sup> Therapies to curb uncontrolled  
417 cytokine release have been proposed and are being widely used. Randomized controlled  
418 trials with host-directed therapies are currently under way and results will be available  
419 within the next months.<sup>17,18</sup> Meanwhile, data from prospective studies can help to improve  
420 COVID-19 patients management. In our study, the 7-day mortality was 26.8%, slightly  
421 higher than a recent experience with remdesivir and similar to the mortality of 22.1%  
422 reported in another study with lopinavir/ritonavir.<sup>27,28</sup> However, the patients in our  
423 prospective cohort had more coexisting conditions, including potential mortality risk  
424 factors such as hypertension, other cardiovascular and metabolic diseases, chronic kidney  
425 disease and cancer.

426 The understanding of mortality risk factors in patients with COVID-19 is an evolving  
427 matter. Age, specific coexisting conditions and laboratory parameters may help identifying  
428 patients with poor outcome.<sup>29</sup> As expressed before, in our cohort of patients treated with  
429 tocilizumab, hypertension, history of cardiac failure and chronic kidney disease were

430 associated with higher mortality in the univariate analysis. Antihypertensive agents, such as  
431 angiotensin-converting enzyme inhibitors (ACEI) and angiotensin receptor blockers  
432 (ARB), have been suggested to be associated with the increase mortality observed in this  
433 subset of patients. Angiotensin converting enzyme 2 plays an important role in SARS-CoV-  
434 2 viral entry as co-receptor.<sup>30</sup> Hypothesis outline that the interactions between these drugs  
435 and co-receptors may increase viral spreading in the lung and pose the patients at a higher  
436 risk of death. However, the evidence is limited and no specific recommendations could be  
437 drawn from current evidence, especially when ACEI and ARB have shown to reduce  
438 mortality in this at risk population.<sup>31</sup> The Vall d'Hebron COVID-19 Prospective Cohort  
439 Study has among its main objectives to analyse the role of these and other drugs used to  
440 treat chronic conditions in the prognosis of patients with COVID-19.

441 Host-directed therapies aiming at blocking an unrestrained immune response and an  
442 excessive inflammation have been proposed as potential therapies to prevent acute lung  
443 injury and subsequent ARDS. SARS-CoV-2 infection severity has been associated with an  
444 increase in IL-6 and D dimer levels, and the cytokine profile resembles that of other  
445 conditions in which host-directed therapies have been successfully used.<sup>13,29,32</sup> Timely use  
446 of host-directed therapies may curb uncontrolled cytokine release and prevent damage  
447 inflicted by hyperinflammation. Tocilizumab has shown to be safe in two small Chinese  
448 cohort studies of patients with COVID-19.<sup>9,16</sup> Efficacy of tocilizumab, measured as hospital  
449 discharge, was 90.5% (19 out of 21 patients) in patients with COVID-19 needing oxygen  
450 supplementation and having elevated IL-6 in one study<sup>9</sup>; while the other study showed 3  
451 deaths, 10 clinical stabilizations and 2 clinical aggravation out of 15 patients.<sup>16</sup> Other  
452 laboratory and radiologic findings also improved in a short period of time. However,  
453 standard of care in the studies was different limiting the possibility of direct comparisons.

454 As in other infections and inflammation-driven diseases, timely initiation of precise therapy  
455 is the mainstay of patient management and directly affects mortality and morbidity. Our  
456 study showed that patients receiving prompt treatment with tocilizumab before lung injury  
457 is established have less 7-day mortality, a benefit that may be sustained in the long-term.<sup>33</sup>  
458 The safety profile of tocilizumab has been extensively studied in clinical trials with patients  
459 suffering autoimmune diseases. The most common adverse events of intravenous  
460 tocilizumab in a pooled analysis of 3 clinical trials were upper respiratory infections,  
461 nasopharyngitis, headache, hypertension and increase in liver enzymes. Serious adverse  
462 events occurred in 12% of the patients, being infectious diseases the most common.<sup>34</sup> In our  
463 study we did not report any serious adverse event, although the symptoms of systemic viral  
464 infections may mimic any adverse event and difficult its identification. Tocilizumab-related  
465 bacterial infections were not reported in our study. Two factors may have contributed to  
466 this: first, many patients were under antibiotic treatment, and second, the short follow up  
467 period precludes us from any further analysis. Nevertheless, the low cumulative dose  
468 administered in this subset of patients may diminish the likelihood of infectious adverse  
469 events.

470 In a time of scarce medical resources, including limited stock of host-directed therapies,  
471 hard medical decisions have to be done by first-line physicians. Allocation of therapies to  
472 patients with the highest chances of a favourable outcome should be encouraged,  
473 maximizing the benefit of the intervention.<sup>35</sup> Evidence-based decision-making and benefit-  
474 maximizing allocation of the available resources should be promoted. In this regards our  
475 study can help physicians to better allocate host-directed therapy in patients with COVID-  
476 19 prioritizing moderate-to-severe ill patients over critically ill patients.

477 This preliminary exploratory study has several limitations. First, there is no control group  
478 and the minimum follow up period was 7 days. Therefore, at this point it is not possible to  
479 evaluate the differences between patients receiving tocilizumab or not and, consequently, it  
480 is not possible to evaluate solidly what is the overall benefit of administering this drug.  
481 However, the urgency of obtaining data on new therapies justifies the early communication  
482 of these results. Second, ICU admission is not a very robust endpoint since it depends on  
483 the attitudes of the treating physicians as well as the availability of beds at times of resource  
484 scarcity and overwhelming demand. For this reason, mortality was selected as the main  
485 outcome in our study. Besides, the subsequent analysis of all patients included in the Vall  
486 d’Hebron COVID-19 Prospective Cohort Study may solve this limitation and inform results  
487 with a longer follow up period. Finally, our data is limited to a single centre. While our  
488 results may not be extrapolated to other populations or other standards of care, the  
489 management of patients was homogeneous avoiding the centre effect of multicentric  
490 studies. Multivariate analysis is limited by sample size.

491 In summary, we found a mortality rate of 26.8% in this subset of patients with COVID-19  
492 receiving tocilizumab for the treatment of inflammatory-related lung injury. Time from  
493 lung injury onset to tocilizumab administration may be critical to patient recovery. Our  
494 results may help front line physician to make evidence-based decisions in times of scarce  
495 resources and operationalized fair and transparent allocation procedures, maximizing the  
496 benefit of the intervention. Future and current host-directed clinical trials for patients with  
497 COVID-19 should consider our preliminary data in their design. All our patients were  
498 treated with a combination of antiviral drugs whose efficacy is yet to be demonstrated.  
499 Host-directed therapies in the absence of antiviral drugs needs further investigation.

500

501

## 502 REFERENCES

- 503 1. Huang C, Wang Y, Li X, et al. Clinical features of patients infected with 2019 novel  
504 coronavirus in Wuhan, China. *Lancet Lond Engl* 2020;395(10223):497–506.
- 505 2. Novel Coronavirus (2019-nCoV) situation reports [Internet]. [cited 2020 Apr  
506 1]; Available from: [https://www.who.int/emergencies/diseases/novel-coronavirus-](https://www.who.int/emergencies/diseases/novel-coronavirus-2019/situation-reports)  
507 [2019/situation-reports](https://www.who.int/emergencies/diseases/novel-coronavirus-2019/situation-reports)
- 508 3. Novel Coronavirus Pneumonia Emergency Response Epidemiology Team. [The  
509 epidemiological characteristics of an outbreak of 2019 novel coronavirus diseases  
510 (COVID-19) in China]. *Zhonghua Liu Xing Bing Xue Za Zhi Zhonghua*  
511 *Liuxingbingxue Zazhi* 2020;41(2):145–51.
- 512 4. Hauser A, Counotte MJ, Margossian CC, et al. Estimation of SARS-CoV-2 mortality  
513 during the early stages of an epidemic: a modelling study in Hubei, China and  
514 northern Italy. *medRxiv* 2020;2020.03.04.20031104.
- 515 5. De Clercq E. Potential antivirals and antiviral strategies against SARS coronavirus  
516 infections. *Expert Rev Anti Infect Ther* 2006;4(2):291–302.
- 517 6. Al-Tawfiq JA, Memish ZA. Update on therapeutic options for Middle East  
518 Respiratory Syndrome Coronavirus (MERS-CoV). *Expert Rev Anti Infect Ther*  
519 *2017;15(3):269–75.*
- 520 7. Gautret P, Lagier J-C, Parola P, et al. Hydroxychloroquine and azithromycin as a  
521 treatment of COVID-19: results of an open-label non-randomized clinical trial. *Int J*  
522 *Antimicrob Agents* 2020;105949.
- 523 8. Chen Z, Hu J, Zhang Z, et al. Efficacy of hydroxychloroquine in patients with  
524 COVID-19: results of a randomized clinical trial. *medRxiv*  
525 *2020;2020.03.22.20040758.*
- 526 9. Xu X, Han M, Li T, et al. Effective treatment of severe COVID-19 patients with  
527 tocilizumab. Available from: [chinaXiv:202003.00026v1](http://chinaXiv:202003.00026v1) (2020).  
528 [www.chinaxiv.org/abs/202003.00026](http://www.chinaxiv.org/abs/202003.00026)
- 529 10. Tang N, Bai H, Chen X, Gong J, Li D, Sun Z. Anticoagulant treatment is associated  
530 with decreased mortality in severe coronavirus disease 2019 patients with  
531 coagulopathy. *J Thromb Haemost JTH* 2020;
- 532 11. Richardson P, Griffin I, Tucker C, et al. Baricitinib as potential treatment for 2019-  
533 nCoV acute respiratory disease. *Lancet Lond Engl* 2020;395(10223):e30–1.

- 534 12. Mehta P, McAuley DF, Brown M, Sanchez E, Tattersall RS, Manson JJ. COVID-19:  
535 consider cytokine storm syndromes and immunosuppression. *The Lancet*  
536 2020;395(10229):1033–4.
- 537 13. Zumla A, Hui DS, Azhar EI, Memish ZA, Maeurer M. Reducing mortality from 2019-  
538 nCoV: host-directed therapies should be an option. *Lancet Lond Engl*  
539 2020;395(10224):e35–6.
- 540 14. Biggioggero M, Crotti C, Becciolini A, Favalli EG. Tocilizumab in the treatment of  
541 rheumatoid arthritis: an evidence-based review and patient selection. *Drug Des Devel*  
542 *Ther* 2019;13:57–70.
- 543 15. Brudno JN, Kochenderfer JN. Toxicities of chimeric antigen receptor T cells:  
544 recognition and management. *Blood* 2016;127(26):3321–30.
- 545 16. Luo P, Liu Y, Qiu L, Liu X, Liu D, Li J. Tocilizumab treatment in COVID-19: a  
546 single center experience. *J Med Virol* 2020;
- 547 17. Evaluation of the Efficacy and Safety of Sarilumab in Hospitalized Patients With  
548 COVID-19 - Full Text View - ClinicalTrials.gov [Internet]. [cited 2020 Apr  
549 11]; Available from: <https://clinicaltrials.gov/ct2/show/NCT04315298>
- 550 18. Study of the Efficacy and Safety of Ruxolitinib to Treat COVID-19 Pneumonia - Full  
551 Text View - ClinicalTrials.gov [Internet]. [cited 2020 Apr 11]; Available from:  
552 <https://clinicaltrials.gov/ct2/show/NCT04331665>
- 553 19. Lim WS, van der Eerden MM, Laing R, et al. Defining community acquired  
554 pneumonia severity on presentation to hospital: an international derivation and  
555 validation study. *Thorax* 2003;58(5):377–82.
- 556 20. Seymour CW, Liu VX, Iwashyna TJ, et al. Assessment of Clinical Criteria for Sepsis.  
557 *JAMA* 2016;315(8):762–74.
- 558 21. World Health Organization. Laboratory testing for 2019 novel coronavirus (2019-  
559 nCoV) in suspected human cases. WHO - Interim Guid 2020;2019(January):1–7.
- 560 22. Moës E, Vijgen L, Keyaerts E, et al. A novel pancoronavirus RT-PCR assay: frequent  
561 detection of human coronavirus NL63 in children hospitalized with respiratory tract  
562 infections in Belgium. *BMC Infect Dis* 2005;5:6.
- 563 23. Woo PCY, Lau SKP, Lam CSF, et al. Discovery of a novel bottlenose dolphin  
564 coronavirus reveals a distinct species of marine mammal coronavirus in  
565 *Gammacoronavirus*. *J Virol* 2014;88(2):1318–31.
- 566 24. Force TADT. Acute Respiratory Distress Syndrome: The Berlin Definition. *JAMA*  
567 2012;307(23):2526–33.

- 568 25. Festic E, Bansal V, Kor DJ, Gajic O. SpO<sub>2</sub>/FiO<sub>2</sub> Ratio on Hospital Admission Is an  
569 Indicator of Early Acute Respiratory Distress Syndrome Development Among  
570 Patients at Risk. *J Intensive Care Med* 2013;30(4):209–16.
- 571 26. Kalil AC. Treating COVID-19-Off-Label Drug Use, Compassionate Use, and  
572 Randomized Clinical Trials During Pandemics. *JAMA* 2020;
- 573 27. Grein J, Ohmagari N, Shin D, et al. Compassionate Use of Remdesivir for Patients  
574 with Severe Covid-19. *N Engl J Med* 2020;
- 575 28. Cao B, Wang Y, Wen D, et al. A Trial of Lopinavir-Ritonavir in Adults Hospitalized  
576 with Severe Covid-19. *N Engl J Med* 2020;
- 577 29. Zhou F, Yu T, Du R, et al. Clinical course and risk factors for mortality of adult  
578 inpatients with COVID-19 in Wuhan, China: a retrospective cohort study. *Lancet*  
579 *Lond Engl* 2020;395(10229):1054–62.
- 580 30. Zhou P, Yang X-L, Wang X-G, et al. A pneumonia outbreak associated with a new  
581 coronavirus of probable bat origin. *Nature* 2020;579(7798):270–3.
- 582 31. Patel AB, Verma A. COVID-19 and Angiotensin-Converting Enzyme Inhibitors and  
583 Angiotensin Receptor Blockers: What Is the Evidence? *JAMA* 2020;
- 584 32. Lee DW, Gardner R, Porter DL, et al. Current concepts in the diagnosis and  
585 management of cytokine release syndrome. *Blood* 2014;124(2):188–95.
- 586 33. Ngai JC, Ko FW, Ng SS, To K-W, Tong M, Hui DS. The long-term impact of severe  
587 acute respiratory syndrome on pulmonary function, exercise capacity and health  
588 status. *Respirol Carlton Vic* 2010;15(3):543–50.
- 589 34. Nishimoto N, Miyasaka N, Yamamoto K, Kawai S, Takeuchi T, Azuma J. Long-term  
590 safety and efficacy of tocilizumab, an anti-IL-6 receptor monoclonal antibody, in  
591 monotherapy, in patients with rheumatoid arthritis (the STREAM study): evidence of  
592 safety and efficacy in a 5-year extension study. *Ann Rheum Dis* 2009;68(10):1580–4.
- 593 35. Emanuel EJ, Persad G, Upshur R, et al. Fair Allocation of Scarce Medical Resources  
594 in the Time of Covid-19. *N Engl J Med* 2020;

595

596



597 **TABLES**

598 **Table 1.** Demographic and clinical characteristics of the patients at baseline\*

| <b>Characteristics</b>   | <b>Patients (n=82)</b> |
|--|------------------------|
| Age, mean - yr   | 59.1 ±19.8             |
| Sex – no (%)   |                        |
| Male   | 52 (63.4%)             |
| Female   | 30 (36.6%)             |
| <b>Origin</b>  |                        |
| Spain  | 63 (77.8%)             |
| Latin America  | 13 (16.1%)             |
| East Europe  | 3 (3.7%)               |
| North Africa (Magreb)  | 2 (2.4%)               |
| <b>Coexisting condition – no (%)</b>                             |                        |
| Active tobacco smoker  | 5 (6.1%)               |
| Former tobacco smoker  | 28 (34.2%)             |
| Never smoke  | 49 (59.8%)             |
| Active daily alcohol consumption                                 | 1 (1.2%)               |
| Former daily alcohol consumption                                 | 2 (2.4%)               |
| Never drink daily  | 79 (96.3%)             |
| Cognitive imparment  | 1 (1.2%)               |
| Diabetes Mellitus  | 16 (19.5%)             |
| Immunosuppression  | 10 (12.2%)             |
| Solid organ transplant   | 5 (6.1%)               |
| Drug induced immunosuppression                                   | 3 (3.7%)               |
| Bone marrow transplant   | 1 (1.2%)               |
| Other  | 1 (1.2%)               |
| Former cancer (includes any solid cancer)                        | 9 (11.1%)              |
| Active cancer (includes any solid cancer)                        | 2 (2.4%)               |
| Former haematological condition (includes leukemia and lymphoma) | 3 (3.7%)               |
| Active haematological condition (includes leukemia and lymphoma) | 2 (2.4%)               |
| Hypertension   | 32 (39%)               |
| Hystory of cardiac failure                                       | 5 (6.1%)               |
| Atrial fibrillation  | 10 (12.2%)             |
| Lung diseases ⇩  | 19 (23.5%)             |
| Chronic obstructive pulmonary disease                            | 6 (7.3%)               |
| Obstrutive sleep apnea syndrome                                  | 3 (3.7%)               |
| Insterstitial lung disease                                       | 2 (2.4%)               |
| Asthma   | 2 (2.4%)               |
| Bronchiectasis   | 2 (2.4%)               |
| Lung restritive disease  | 2 (2.4%)               |
| Lung transplant  | 2 (2.4%)               |
| Pulmonary hypertension   | 1 (2.4%)               |
| Controlled pulmonary tuberculosis                                | 1 (2.4%)               |
| Chronic kidney disease   | 11 (13.6%)             |
| GFR>50   | 3 (27.3%)              |

|   |            |
|---|------------|
| GFR 30-50   | 4 (36.4%)  |
| GFR<30  | 4 (36.4%)  |
| Renal supportive therapy (hemodialysis)                                 | 2 (18.2%)  |
| Cirrhosis   | 1 (1.2%)   |
| Central nervous system disease  | 2 (2.4%)   |
| Obesity   | 17 (20.7%) |
| Mean duration of symptom before admission (days)                        | 6.7 ±4.4   |
| Mean days from symptom onset to dyspnea                                 | 1.14 ±3.6  |
| Mean duration of dyspnea before admission                               | 3.48±3.2   |
| <b>Symptoms</b>   |            |
| Fever   | 75 (91.5%) |
| Cough   | 71 (86.6%) |
| Shortness of breath   | 54 (65.9%) |
| Sore throat   | 1 (1.2%)   |
| Sputum production   | 8 (9.8%)   |
| Rhinorrhea  | 1 (1.2%)   |
| Headache  | 1 (1.2%)   |
| Lost of weight  | 4 (4.9%)   |
| Malaise   | 46 (56.1%) |
| Hemoptysis  | 5 (6.1%)   |
| Chest pain  | 21 (25.6%) |
| Anosmia   | 4 (4.9%)   |
| Cacosmia  | 3 (3.7%)   |
| Muscle and joint pain   | 14 (17.1%) |
| Nauseas   | 3 (3.7%)   |
| Vomits  | 36 (43.9%) |
| Diarrhea  | 8 (9.8%)   |
| Profuse sweating  | 2 (2.4%)   |
| <b>Barthel scale 100 previous to symptoms onset†</b>                    | 77 (93.9%) |
| <b>ECOG ≤ 1 previous to symptoms onset ‡</b>                            | 78 (95.1%) |
| <b>Median (IQR), age-adjusted Charlson index at baseline - points §</b> | 3 (1-4)    |
| <b>Median (IQR), SOFA index at admission – points ¶</b>                 | 1 (0-3)    |
| <b>CURB-65 ≥ 3 §</b>  | 18 (22%)   |

599 \*Plus-minus values are means (±SD). Rounding has been applied to percentages. Total  
600 may no be 100 because of rounding.

601 †Barthel index total scores range from 0 to 100, with higher scores indicating a better  
602 performance of 10 basic daily self-care activities. ‡ The Eastern Cooperative Oncology  
603 Group (ECOG) performance scale range from 0 (fully active) to 4 (completely disabled). §  
604 The Charlson risk index score ranges from 0 to 37 with higher scores indicating a higher  
605 risk of death. ¶ Sequential Organ Failure Assessment (SOFA) score ranges from 0 to 24  
606 with higher ranges indicating a higher risk or morbidity; individuals with a score of 15 or

607 more have a mortality rate of 90%. Its calculation is missing in two patients. § Community  
608 acquired pneumonia severity index assessing Confusion, Urea, Respiratory rate, Blood  
609 pressure and age over 65 years (CURB-65) ranges from 0 to 5 depending on the number  
610 of risk factors present in the same patient.

611 GFR: glomerular filtration rate.

612 ¬ One patient had interstitial lung disease and pulmonary hypertension and another  
613 patient had obstructive sleep apnea syndrome and lung restrictive disease.

**Table 2.** Status on admission and follow up\*

|  | Admission (n=82) † | 48 hours (n=79)<br>† | 7 days (n=51) † |
|--|--------------------|----------------------|-----------------|
| <b>Vital signs on admission – no. (%)</b>                          |                    |                      |                 |
| Systolic blood pressure, mean - mmHg                               | 128.3±18.3         | 120.8 ±17.7          | 125.0 ±19.4     |
| Diastolic blood pressure, mean - mmHg                              | 73 ±12.2           | 71.3 ±9.3            | 72.3 ±10.7      |
| Temperature, mean - °C   | 37.7 ±0.9          | 36.8 ±0.8            | 36.4 ±0.7       |
| Heart rate, mean - rates per minute                                | 94.3 ±17.8         | 79.7 ±12.0           | 79.0 ±14.2      |
| Respiratory rate, mean - breaths per minute                        | 23.9 ±6.3          | 21.5 ±6.0            | 22.5 ±11.5      |
| Temperature > 37.8°C   | 34 (42.5%)         | 9 (12.1%)            | 1 (1.6%)        |
| Heart rate > 100 beats per minute                                  | 28 (65.4%)         | 3 (3.8%)             | 7 (11.5%)       |
| Respiratory rate > 20 breaths per minute                           | 39 (58.2%)         | 24 (40%)             | 23 (46.9%)      |
| Oxygen saturation, mean  | 94.0 ±4.4          | 94.1 ±3.9            | 93.6 ±6.9       |
| <b>Physical examination – no. (%)</b>                              |                    |                      |                 |
| Glasgow coma scale of 15   | 82 (100%)          |                      |                 |
| <b>Abnormal lung sounds</b>  |                    |                      |                 |
| Crackles   | 62 (75.6%)         | 54 (67.5%)           | 39 (58.2%)      |
| Hypophonesis   | 9 (11%)            | 7 (8.6%)             | 5 (7.5%)        |
| Wheezing   | 5 (6.1%)           | 2 (2.5%)             | 0 (0%)          |
| Rhonchus   | 5 (6.1%)           | 2 (2.5%)             | 2 (3%)          |
| <b>Imaging characteristics – no. (%)</b>                           |                    |                      |                 |
| <b>Type of chest radiography alteration†</b>                       |                    |                      |                 |
| Unilateral or bilateral infiltrate                                 | 20 (24.4%)         | 17 (21.3%)           | 21 (31.3%)      |
| Interstitial pattern   | 10 (12.2%)         | 4 (5%)               | 7 (10.5%)       |
| Pleural effusion   | 2 (2.4%)           | 1 (1.3%)             | 0 (0%)          |
| Atelectasis  | 1 (1.2%)           | 1 (1.3%)             | 0 (0%)          |
| <b>Extension of abnormality in chest radiography PA projection</b> |                    |                      |                 |
| <33%   | 32 (39.0%)         | 4 (5%)               | 4 (5.97%)       |
| 33-66%   | 38 (46.3%)         | 6 (7.5%)             | 9 (13.43%)      |
| >66%   | 10 (12.2%)         | 9 (11.25%)           | 13 (19.45%)     |

\*Plus-minus values are means ( $\pm$ SD). Rounding has been applied to percentages. Total may not be 100 because of rounding.

†Total number of patients varies among variables and follow up as mortality increases.

‡Some patients have more than one radiologic abnormality.

PA, posteroanterior.

**Table 3.** Laboratory data at admission and follow up\*

| Laboratory data – no. (%)                             | Admission (n=82) †   | 48 hours (n=79) †    | 7 days (n=51) †       |
|---|----------------------|----------------------|-----------------------|
| Red cell count  |                      |                      |                       |
| Haemoglobin, mean – gr/dl                             | 13.3 $\pm$ 1.6       | 12.7 $\pm$ 1.6       | 12.5 $\pm$ 1.5        |
| $\geq$ 10 gr/dl – no. (%)                             | 78 (96.3%)           | 41 (93.2%)           | 43 (95.6%)            |
| White cell count                                      |                      |                      |                       |
| Mean (SD) – per mm <sup>3</sup>                       | 9.2 $\pm$ 10.4       | 6.7 $\pm$ 3.8        | 7.1 $\pm$ 3.5         |
| Distribution – no. (%)                                |                      |                      |                       |
| $\geq$ 10000/mm <sup>3</sup>                          | 17 (21.3%)           | 5 (11.4%)            | 9 (20%)               |
| $\leq$ 4000/mm <sup>3</sup>                           | 7 (8.8%)             | 10 (22.7%)           | 9 (20%)               |
| Lymphocyte count                                      |                      |                      |                       |
| Median (IQR) – per mm <sup>3</sup>                    | 868.9 (593.7-1205.5) | 710.5 (491.5-1154.9) | 1112.0 (575.1-1519.6) |
| Distribution – no. (%)                                |                      |                      |                       |
| $\geq$ 1000/mm <sup>3</sup> – no. (%)                 | 34 (42.5%)           | 15 (34.1%)           | 23 (51.1%)            |
| Platelet count, mean – per mm <sup>3</sup>            | 199 $\pm$ 87.2       | 235.7 $\pm$ 139.4    | 282.3 $\pm$ 141.6     |
| Prothrombin time, mean - %                            | 77.9 $\pm$ 23.8      |                      |                       |
| Activated partial thromboplastin time, mean - seconds | 24.6 $\pm$ 9.8       |                      |                       |
| Fibrinogen, mean – gr/dl                              | 5.6 $\pm$ 1.0        |                      |                       |

|  |                   |                    |                      |
|--|-------------------|--------------------|----------------------|
| D dimer, median (IQR) - ng/ml              | 295 (201-437)     | 565 (303-772)      | 738 (273.5-2963)     |
| Glucose, mean - mg/dl                      | 120.2 ±36.7       |                    |                      |
| Urea, median (IQR) – mg/dl                 | 43 (38-72)        |                    |                      |
| Serum creatinine, mean - mg/dl             | 1.7 ±6.1          | 2.1 ±7.1           | 0.9 ±0.6             |
| Glomerular filtrate, mean – CKD-EPI        | 73.5 ±23.8        | 73.1 ±26.5         | 77.25 ±19.9          |
| Sodium, mean – mmol/L                      | 136.0 ±3.7        |                    |                      |
| Potassium, mean – mmol/L                   | 3.9 ±0.7          |                    |                      |
| Calcium, mean – mg/dl                      | 8.9 ±0.5          |                    |                      |
| Total bilirubin, mean – mg/dl              | 0.7 ±0.5          |                    |                      |
| Aspartate aminotransferase, mean - U/litre | 53.1 ±34.3        | 53.7 ±35.4         | 71.4 ±46.2           |
| Aspartate aminotransferase > 40 U/litre    | 42 (53.9%)        | 25 (61%)           | 30 (66.7%)           |
| Alanine aminotransferase, mean - U/litre   | 41.68 (34.4)      | 43.4 (31.7)        | 77.3 (71)            |
| Alanine aminotransferase > 40 U/litre      | 28 (35.4%)        | 16 (39.0%)         | 30 (66.7%)           |
| Alkaline phosphatase, mean - U/litre       | 69.80 ±21.7       |                    |                      |
| Gamma-glutamyl transferase, mean – U/litre | 93 ±58.0          |                    |                      |
| LDH, mean - UI/L                           | 446.61 ±79.5      |                    |                      |
| CRP, mean - mg/dl                          | 17.98 ±11.7       | 17.5 ±10.0         | 6.3 ±9.2             |
| Ferritin, mean - ng/ml                     | 885.69 ±500.5     | 1505.4 ±1194.6     | 1241.6 ±789.2        |
| Proteins, mean - gr/dl                     | 7.38 ±0.7         |                    |                      |
| Albumin, mean - gr/dl                      | 3.30 ±0.3         |                    |                      |
| IL-6, median (IQR) - pg/ml                 | 74.8 (49.4-120.0) | 184.1 (75.3-592.6) | 501.2 (103.7-2361.0) |
| <b>Infection analysis</b>                  |                   |                    |                      |
| Positive blood cultures                    | 1 (1.3%)          | 0 (0%)             | 1 (10%)              |
| Positive sputum cultures                   | 3 (4.3%)          | 0 (0%)             | 2 (22.2%)            |
| Positive pneumococcal urinary antigen      | 2 (2.5%)          | 0 (0%)             | 0 (0%)               |

\*Plus-minus values are means (±SD). Rounding has been applied to percentages. Total may not be 100 because of rounding.

†Total number of patients varies among variables and follow up as mortality increases.

**Table 4.** Oxygen supplementation and supportive ventilation on admission and follow up\*

|  | <b>Admission (n=82) †</b> | <b>48 hours (n=79) †</b> | <b>7 days (n=51) †</b> |
|--|---------------------------|--------------------------|------------------------|
| Respiratory frequency, mean – rate per minute                      | 23.9 ±6.3                 | 21.6 ±6                  | 22.5 ±11.5             |
| Oxygen saturation, mean  | 94 ±4.4                   | 94 ±3.9                  | 93.6 ±6.9              |
| SpO2/FiO2 ratio, median (IQR)                                      | 428 (316.1-454.8)         | 271.4 (158.3-361.5)      | 230.2 (118.8-346.4)    |
| <b>Oxygen supplementation and supportive ventilation – no. (%)</b> |                           |                          |                        |
| Nasal cannula  | 2 (5.9%)                  | 6 (9%)                   | 4 (7.0%)               |
| Face masks   | 22 (64.7%)                | 33 (49.3%)               | 16 (28.1%)             |
| High oxygen supplementation device                                 | 9 (26.5%)                 | 11 (16.4%)               | 6 (10.5%)              |
| High flow nasal cannulas   | 0 (0%)                    | 10 (14.9%)               | 16 (28.1%)             |
| Non-invasive mechanical ventilation                                | 0 (0%)                    | 2 (3%)                   | 3 (5.3%)               |
| Invasive mechanical ventilation                                    | 1 (2.9%)                  | 5 (7.5%)                 | 12 (21.1%)             |

\*Plus-minus values are means (±SD). Rounding has been applied to percentages. Total may not be 100 because of rounding.

†Total number of patients varies among variables and follow up as mortality increases.

SpO2/FiO2 ratio: arterial oxygen saturation measured by pulse oximetry to fraction of inspired oxygen

**Table 5.** Secondary outcomes at 7-day follow up from tocilizumab administration.

| <b>Outcome – no. (%)</b>            | <b>Patients</b> |
|-------------------------------------|-----------------|
| Vasopressor therapy                 | 15 (19.7%)      |
| Acute respiratory distress syndrome | 45 (64.3%)      |
| Respiratory failure                 | 62 (84.9%)      |
| Cardiac failure                     | 1 (1.5%)        |
| Septic shock                        | 1 (1.6%)        |
| Acute kidney injury                 | 9 (13.9%)       |
| Concomitant infection               | 1 (1.5%)        |

**Table 6.** Main outcome at 7-day follow up from tocilizumab administration.

| <b>Main outcomes – no. %</b>    | <b>Patients</b> |
|---------------------------------|-----------------|
| Discharge                       | 34 (41.5%)      |
| In-patient in conventional ward | 9 (11.0%)       |
| Intensive care unit             | 14 (17.1%)      |
| Death                           | 22 (26.8%)      |
| Transferred                     | 3 (3.7%)        |

**Table 7.** Comparison of risk factors by in-hospital mortality.

| <b>Characteristics</b>           | <b>Alive (n=60)</b> | <b>Dead (n=22)</b> | <b>P-value</b> |
|----------------------------------|---------------------|--------------------|----------------|
| Demographics                     |                     |                    |                |
| Age, mean (SD) - yr              | 53.3 (19.9)         | 75.2 (6.2)         | <0.001         |
| Sex – no (%)                     | 36 (60.0)           | 16 (72.7)          | 0.289          |
| Coexisting condition – no (%)    |                     |                    |                |
| Tobacco use                      |                     |                    | 0.397          |
| Active tobacco smoker            | 5 (8.3)             | -                  |                |
| Former tobacco smoker            | 19 (31.7)           | 9 (40.9)           |                |
| Never smoke                      | 36 (60.0)           | 13 (59.1)          |                |
| Alcohol use                      |                     |                    | 0.070          |
| Active daily alcohol consumption | 1 (1.7)             | -                  |                |
| Former daily alcohol consumption | -                   | 2 (9.1)            |                |



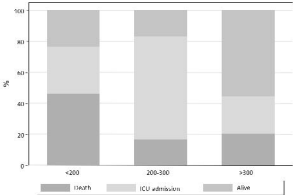
| Never drink daily  | 59 (98.3)          | 20 (90.9)          |        |
|--|--------------------|--------------------|--------|
| Barthel index at admission, median (IQR)   | 100 (100-100)      | 100 (100-100)      | 0.371  |
| Dementia   | 1 (1.7)            | -                  | 1      |
| Diabetes Mellitus  | 12 (20.0)          | 4 (18.2)           | 1      |
| Immunosuppression  | 5 (8.3)            | 5 (22.7)           | 0.123  |
| Solid tumor  | 3 (5.1)            | 6 (27.3)           | 0.012  |
| Leukemia/Lymphoma  | 2 (3.3)            | 1 (4.6)            | 1      |
| Hypertension   | 17 (28.3)          | 15 (68.2)          | 0.001  |
| Chronic heart failure  | 1 (1.7)            | 4 (18.2)           | 0.017  |
| Chronic lung disease   | 11 (18.6)          | 8 (36.4)           | 0.094  |
| Chronic renal failure  | 4 (6.7)            | 7 (33.3)           | 0.005  |
| Liver cirrhosis  | 1 (1.7)            | -                  | 1      |
| Central nervous system disease   | 1 (1.7)            | 1 (4.6)            | 0.467  |
| Obesity  | 14 (23.3)          | 3 (13.6)           | 0.539  |
| Median (IQR), age-adjusted Charlson index at baseline - points                     | 2 (1 – 3)          | 5 (3 – 6)          | <0.001 |
| Oxygenation previous to tocilizumab administration                                 |                    |                    |        |
| Oxygen saturation (pulse oximeter) at baseline, median (IQR)                       | 95 (94 - 97.5)     | 93 (89 - 97)       | 0.061  |
| FiO2 at baseline, median (IQR)   | 0.21 (0.21 - 0.28) | 0.26 (0.21 - 0.50) | 0.130  |
| SpO2/FiO2 ratio at baseline, median (IQR)  | 440 (343-455)      | 393 (180-452)      | 0.134  |
| High oxygen supplementation or ventilation at baseline* - no. (%)                  | -                  | 1 (4.6%)           | 0.268  |
| Oxygen saturation (pulse oximeter) at tocilizumab administration, median (IQR)     | 95 (93-97)         | 92 (89-94)         | 0.006  |
| FiO2 previous to tocilizumab administration, median (IQR)                          | 0.27 (0.21-0.40)   | 0.35 (0.21-1)      | 0.131  |
| SpO2/FiO2 ratio previous to tocilizumab administration, median (IQR)               | 354 (228-438)      | 263 (95-423.8)     | 0.072  |
| High oxygen supplementation or ventilation previous to tocilizumab administration* | 3 (5%)             | 4 (18%)            | 0.79   |
| Days from initial symptoms to tocilizumab administration, median (IQR)             | 9 (7 - 11)         | 7 (5 - 15)         | 0.372  |
| Days from admission to tocilizumab administration, median (IQR)                    | 2 (1 - 3)          | 3 (1 - 4)          | 0.064  |
| Days from respiratory insufficiency to tocilizumab                                 | 0 (0 - 1)          | 1 (0 - 2)          | 0.055  |

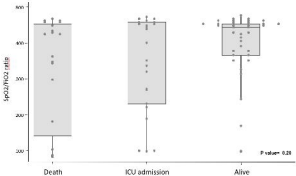
|  |            |           |       |
|--|------------|-----------|-------|
| administration, median (IQR)                               |            |           |       |
| Days from ARDS to tocilizumab administration, median (IQR) | 0 (-1 - 0) | 0 (0 - 1) | 0.132 |

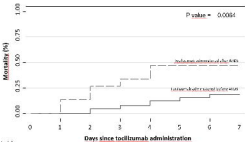
\*Plus-minus values are means ( $\pm$ SD). Rounding has been applied to percentages. Total may not be 100 because of rounding.

†Includes high flow oxygen delivery systems, high flow nasal cannula, non-invasive mechanical ventilation or invasive ventilation

ARDS: acute respiratory distress syndrome.





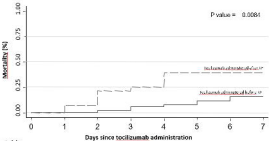


**Qty. at risk**

**Tocilizumab administration at Day 0**

**Tocilizumab administration before Day 0**

|    |    |    |    |    |    |    |    |    |
|----|----|----|----|----|----|----|----|----|
| 11 | 66 | 66 | 63 | 60 | 58 | 58 | 51 | 41 |
| 15 | 15 | 13 | 11 | 10 | 8  | 8  | 7  | 7  |



**No. at risk**

|   | 0  | 1  | 2  | 3  | 4  | 5  | 6  | 7  |
|---|----|----|----|----|----|----|----|----|
| <b>No. of deaths due to infection</b> (dashed line)   | 52 | 44 | 32 | 27 | 18 | 17 | 10 | 10 |
| <b>No. of deaths due to other causes</b> (solid line) | 29 | 28 | 25 | 22 | 21 | 17 | 15 | 15 |