

1 The genetic analysis of a founder Northern American population of European descent identifies
2 *FANCI* as a candidate familial ovarian cancer risk gene
3

4 Caitlin T Fierheller^{1,2}, Laure Guitton-Sert^{3,4}, Wejdan M Alenezi^{1,2,5}, Timothée Revil^{1,6}, Kathleen K
5 Oros⁷, Karine Bedard^{8,9}, Suzanna L Arcand², Corinne Serruya², Supriya Behl¹, Liliane
6 Meunier¹⁰, Hubert Fleury¹⁰, Eleanor Fewings¹¹, Deepak N Subramanian¹², Javad Nadaf^{1,6}, Diane
7 Provencher^{10,13}, William D Foulkes^{1,2,7,14}, Zaki El Haffaf¹⁵, Anne-Marie Mes-Masson^{10,16}, Jacek
8 Majewski¹, Marc Tischkowitz¹¹, Paul A James^{12,17,18}, Ian G Campbell^{12,17}, Celia M T
9 Greenwood^{1,7,19,20}, Jiannis Ragoussis^{1,6}, Jean-Yves Masson^{3,4}, Patricia N Tonin^{*1,2,14}

10
11 ¹Department of Human Genetics, McGill University, Montreal, Quebec, Canada, ²Cancer
12 Research Program, The Research Institute of the McGill University Health Centre, Montreal,
13 Quebec, Canada, ³Genome Stability Laboratory, CHU de Québec-Université Laval Research
14 Center, Oncology Division, Quebec City, Quebec, Canada, ⁴Department of Molecular Biology,
15 Medical Biochemistry and Pathology, Laval University Cancer Research Center, Quebec City,
16 Quebec, Canada, ⁵Department of Medical Laboratory Technology, Taibah University, Medina,
17 Saudi Arabia, ⁶McGill Genome Centre, McGill University, Montreal, Quebec, Canada, ⁷Lady
18 Davis Institute for Medical Research, Jewish General Hospital, Montreal, Quebec,
19 Canada, ⁸Laboratoire de Diagnostic Moléculaire, Centre Hospitalier de l'Université de Montréal
20 (CHUM), Montreal, Quebec, Canada, ⁹Département de pathologie et biologie cellulaire,
21 Université de Montréal, Montreal, Quebec, Canada, ¹⁰Centre de recherche du Centre hospitalier
22 de l'Université de Montréal and Institut du cancer de Montréal, Montreal, Quebec,
23 Canada, ¹¹Department of Medical Genetics, National Institute for Health Research Cambridge
24 Biomedical Research Centre, University of Cambridge, Cambridge, UK, ¹²Cancer Genetics
25 Laboratory, Peter MacCallum Cancer Centre, Melbourne, Victoria, Australia, ¹³Division of
26 Gynecologic Oncology, Université de Montréal, Montreal, Quebec, Canada, ¹⁴Department of
27 Medicine, McGill University, Montreal, Quebec, Canada, ¹⁵Centre de recherche du Centre
28 Hospitalier de l'Université de Montréal, Montreal, Quebec, Canada, ¹⁶Department of Medicine,
29 Université de Montréal, Montreal, Quebec, Canada, ¹⁷Sir Peter MacCallum Department of
30 Oncology, University of Melbourne, Melbourne, Victoria, Australia, ¹⁸The Parkville Familial
31 Cancer Centre, Peter MacCallum Cancer Centre and The Royal Melbourne Hospital,
32 Melbourne, Victoria, Australia, ¹⁹Gerald Bronfman Department of Oncology, McGill University,
33 Montreal, Quebec, Canada, ²⁰Department of Epidemiology, Biostatistics & Occupational Health,
34 McGill University, Montreal, Quebec, Canada
35
36
37

38 *Prof. Patricia N. Tonin, PhD
39 Cancer Research Program [mail-drop E02.6217],
40 Centre for Translational Biology,
41 The Research Institute of the McGill University Health Centre,
42 1001 Decarie Boulevard, Montreal, Quebec H4A 3J1
43 Tel: (514) 934-1934 ext. 44069
44 Fax: (514) 933-2691
45 patricia.tonin@mcgill.ca

1 **Abstract**

2
3 Some familial ovarian cancer (OC) could be due to rare risk alleles in genes that each
4 account for a relatively small proportion of cases not due to *BRCA1* and *BRCA2*, major risk
5 genes in the homologous recombination (HR) DNA repair pathway. We report a new candidate
6 OC risk allele, *FANCI* c.1813C>T in a Fanconi anemia (FA) gene that plays a role upstream of
7 the HR DNA repair pathway. This variant was identified by whole exome sequencing of a
8 *BRCA1* and *BRCA2* mutation-negative French Canadian (FC) OC family from a population
9 exhibiting founder effects. In FCs, the c.1813C>T allele was detected in 7% (3/43) of familial
10 and 1.6% (7/439) of sporadic OC cases; and in 3.7% (3/82) of familial breast cancer (BC) cases
11 with a family history of OC and in 1.9% (3/158) of BC only families. This allele was significantly
12 associated with FC *BRCA1* and *BRCA2* mutation-negative OC families (OR=5.6; 95%CI=1.6-
13 19; p=0.006). Although *FANCI* c.1813C>T was detected in 2.5% (74/2950) of cancer-free FC
14 females, carriers had a personal history of known OC risk reducing factors, and female/male
15 carriers were more likely to have reported a first-degree relative with OC ($\rho=0.037$; $\rho=0.011$).
16 Eight rare potentially pathogenic *FANCI* variants were identified in 3.3% (17/516) of Australian
17 OC cases, including 10 carriers of *FANCI* c.1813C>T. Potentially pathogenic *FANCI* variants
18 were significantly more common in AUS OC cases with a family history of OC than in isolated
19 OC cases (p=0.027). The odds ratios (OR) were >3 for carriers of any of the seven rarest
20 *FANCI* alleles, and 1.5 for c.1813C>T. Data from the OC Association Consortium revealed that
21 the ORs for the c.1813C>T allele were highest for the most common OC subtypes. Localization
22 of FANCD2, part of the FANCI-FANCD2 (ID2) binding complex in the FA pathway, to sites of
23 induced DNA damage was severely impeded in cells expressing the p.L605F isoform. This
24 isoform was expressed at a reduced level; unstable by formaldehyde or mitomycin C treatment;
25 and exhibited sensitivity to cisplatin but not to olaparib (a poly [ADP-ribose] polymerase
26 inhibitor). By tissue microarray analyses, FANCI protein was robustly expressed in fallopian
27 tube epithelial cells but expressed at low-to-moderate levels in 88% (83/94) of high-grade
28 serous carcinoma OC samples. This is the first study to describe potentially pathogenic variants
29 in OC in a member of the ID2 complex of the FA DNA repair pathway. Our data suggest that
30 potentially pathogenic *FANCI* variants may modify OC risk in cancer families.

1 Ovarian cancer (OC), with an overall five-year survival rate of 40%, is the leading cause
2 of death in women with gynecologic cancer¹. The overall lifetime risk for OC in the North
3 American population is 1.3%¹. However, twin studies suggest that 22% of OC risk can be
4 attributed to heritable factors² and having an affected first-degree relative confers a 3-7 fold
5 increase in risk to this disease^{3,4}. Carriers that are heterozygous for pathogenic variants in
6 *BRCA1* (*FANCS*) or *BRCA2* (*FANCD1*) have an estimated lifetime risk for OC of 17-44% (by
7 age 80 years), depending on the gene mutated⁵. Pathogenic *BRCA1* and *BRCA2* variants have
8 been reported in 65-85% of cancer syndromes featuring high-grade serous carcinoma (HGSC)⁶
9 – the most common histopathological subtype of epithelial OC⁷ - and/or young age (<50 years)
10 of onset breast cancer (BC), and in 10-20% of HGSC cases regardless of age at diagnosis⁸.
11 Identifying carriers of *BRCA1* and *BRCA2* pathogenic variants for cancer prevention
12 (prophylactic surgery^{9,10}) and increasingly, management of OC using new therapies (poly [ADP-
13 ribose] polymerase inhibitors [PARPi]¹¹⁻¹⁶) has been offered in medical genetic and gynecologic
14 oncology settings.

15 New cancer predisposing gene (CPG) candidates have been investigated with a focus
16 on members of the Fanconi anemia (FA) DNA repair pathway involving *BRCA1* and *BRCA2*
17 function. An early study of 429 women with HGSC reported that 20% are carriers of
18 heterozygous loss of function (LoF) variants in FA pathway genes, though their association with
19 heritable risk was not investigated¹⁷. The most promising new OC predisposing genes are from
20 reports of heterozygous carriers of potentially pathogenic variants in *BRIP1* (*FANCI*)^{18,19},
21 *RAD51C* (*FANCO*)²⁰⁻²³, and *RAD51D*²⁴. In cancer families carriers of pathogenic *RAD51C* and
22 *RAD51D* variants have been estimated to have cumulative risks to age 80 of 11% (95%CI 6-21)
23 and 13% (95%CI 7-23), respectively, for OC²⁵. Collectively, carriers of pathogenic variants in
24 these genes have not accounted for a large proportion of familial OC and BC cases that have
25 not been attributed to the known CPGs. Therefore, it is possible that new CPGs conferring risk
26 to OC have yet to be discovered.

1 The low incidence of OC, rarity of pathogenic variants in each proposed CPG candidate,
2 and genetic heterogeneity of the general population pose major challenges in finding new OC
3 predisposing genes. An attractive strategy for gene discovery focuses on the investigation of
4 demographically (ethnically/geographically) defined populations that take advantage of founder
5 effects. Due to common ancestry, rapid expansion and geographic isolation during 1608~1760
6 of the small founding immigrant French population of Quebec from Europe (EUR), a loss of
7 genetic variation has occurred resulting in subsequent waves of expansion of specific variants^{26–}
8 ²⁹. As French Canadians (FC) are more likely to harbour recurrent germline pathogenic variants,
9 candidate variants are readily identified by sequencing familial cases and/or by comparing allele
10 frequencies in cancer cases versus cancer-free controls in contrast to studies involving the
11 general population due to allelic heterogeneity^{26,27}. Though 19 different pathogenic *BRCA1* or
12 *BRCA2* variants have been identified in FC cancer families of Quebec, five recurrent pathogenic
13 variants account for 84% of all mutation-positive BC and/or OC families³⁰. This is in contrast to
14 the over two thousand different pathogenic *BRCA1* and *BRCA2* variants reported for undefined
15 populations³¹. Specific recurrent pathogenic variants in *PALB2* (*FANCN* - c.2323C>T;
16 p.Q775X)³² and *RAD51D* (c.620C>T; p.S207L)³³ have since been identified in BC and HGSC
17 cases of FC descent, respectively.

18 Using whole exome sequencing (WES) analyses, we identified heterozygous carriers of
19 *FANCI* c.1813C>T; p.L605F missense variant among OC affected sisters in a *BRCA1* and
20 *BRCA2* mutation-negative four-case OC family of FC descent. We pursued this variant as a
21 candidate OC risk allele as it occurred in the FA Complementation Group I gene which is
22 purported to play a role upstream of the homologous recombination (HR) DNA repair pathway
23 involving *BRCA1* and *BRCA2* function^{34–36}. Also, *FANCI* is an essential member of the FA-HR
24 DNA repair pathway and acts as the molecular switch to activate this pathway³⁷. In response to
25 DNA damage, *FANCI* and its heterodimeric binding partner *FANCD2*, which form the ID2

1 complex, are monoubiquitinated and localized to sites of DNA damage allowing for the
2 recruitment of other DNA repair proteins^{34–36,38}.

3 To evaluate the potential pathogenicity of *FANCI* c.1813C>T; p.L605F, we applied a
4 genetic strategy that took advantage of founder effects in the FC population by investigating its
5 allele frequency in FC OC and cancer-free subjects. We applied various *in vitro* experiments to
6 investigate the effects of the encoded p.L605F isoform on FANCI protein function and response
7 to chemotherapies used in the treatment of OC. We also investigated FANCI expression in
8 HGSC and normal tissues. Then, based on our findings from these studies, we investigated
9 other populations, specifically Canadian non-FC (CDN) and Australia (AUS) familial cancer
10 cases for rare potentially pathogenic *FANCI* variants.

1 Results

2 Discovery of *FANCI* c.1813C>T as a candidate OC predisposing variant

3 We previously reported a rare *BRCA1* and *BRCA2* mutation-negative four-case OC
4 family (F1528) in a study of the histopathology of OC and *BRCA1* and *BRCA2* pathogenic
5 variant carrier status of FC cancer families³⁹. To investigate if other potentially pathogenic
6 variants could be contributing to cancer risk in this family, WES and bioinformatic analyses were
7 performed on peripheral blood lymphocyte (PBL) DNA available from two affected siblings both
8 of whom had HGSC³⁹. We selected rare (variant allele frequency [VAF] <1%) potentially
9 pathogenic variants as candidates that were inherited in the heterozygous state and shared in
10 common with the affected sisters. *FANCI* c.1813C>T was among the list of rare variants shared
11 by the affected sisters. This was an intriguing candidate to investigate given that family F1528 is
12 predicted to harbour a pathogenic variant in *BRCA1* or *BRCA2* (Manchester score^{40,41}:
13 *BRCA1*=29, *BRCA2*=20), genes which are involved in the FA-HR pathway. *FANCI*, which plays
14 a role in this pathway, may be associated with phenotypically similar cancer families^{39,42} (**Figure**
15 **1**). The C>T nucleotide alteration is predicted to result in a leucine to phenylalanine change
16 affecting a highly conserved amino acid residue at position 605 (Genomic Evolutionary Rate
17 Profiling [GERP⁺⁺]⁴³ score = 6.1) that resides in the S/TQ phosphorylation cluster³⁷. It is also
18 predicted to be “probably damaging” (PolyPhen2⁴⁴ score = 1.0). However at the time of
19 discovery, the overall allele frequency of *FANCI* c.1813C>T from available databases was
20 0.76% in the National Heart, Lung and Blood Institute (NHLBI) Exome Sequencing Project
21 (ESP) v.2014 (<https://evs.gs.washington.edu/EVS/>) and 0.2% in the 1000 Genomes Project⁴⁵.
22 These allele frequencies were notably higher than expected for individual pathogenic variants
23 found in known OC predisposing genes, such as *BRCA1* and *BRCA2* (0.001%). Therefore, we
24 performed a molecular investigation before pursuing extensive genetic analyses of our study
25 groups.

26

1 *In vitro* analysis revealed FANCI p.L605F isoform behaves differently than wild-type protein

2 Using established *in vitro* assays, we observed that FANCI p.L605F was expressed as a
3 full-length protein with severely affected capacity to localize to sites of DNA damage as
4 compared with wild-type control. To further investigate the functional impact of FANCI p.L605F
5 isoform, both HeLa CRISPR FANCI knock-out (**Figure 2a-g, Supplementary Figure 1**) or HeLa
6 FANCI siRNA knockdown cells (**Supplementary Figure 1**) were complemented with the FANCI
7 p.L605F isoform. Western blot analysis of cells treated with the DNA damaging agent mitomycin
8 C (MMC) showed decreased levels of FANCI p.L605F isoform, unlike the FANCI p.P55L
9 isoform encoded by polymorphic variant c.164C>T which has been reported to exhibit wild-type
10 function³⁵ (**Figure 2a, Supplementary Figure 1**). Increasing the quantity of transfected *FANCI*
11 c.1813C>T DNA by three-fold did not overtly affect the level of protein expression comparable
12 to that seen in the wild-type FANCI or p.P55L isoform (**Supplementary Figure 1**). Essential to
13 downstream FA pathway function is the interdependent monoubiquitination of both FANCI and
14 FANCD2³⁴⁻³⁶. Though FANCI p.L605F isoform co-immunoprecipitates with FANCD2,
15 ubiquitination levels of FANCD2 were severely diminished as compared to those in FANCI wild-
16 type expressing cells (**Figure 2a-b**). These results are consistent with the decrease in the
17 intensity of FANCD2 (see upper band in **Figure 2a**) after MMC treatment in cells complemented
18 with FANCI p.L605F as compared to the WT or p.P55L isoforms. These observations suggest
19 that while physical interactions between FANCI p.L605F isoform and FANCD2 proteins are
20 maintained the altered FANCI isoform may affect monoubiquitination of FANCD2.
21 Monoubiquitination of FANCD2 is required to form MMC-induced foci and consistent with this
22 role the expression of FANCI p.L605F led to a significant reduction in the number of FANCD2
23 foci (**Figure 2c, Supplementary Figure 1**).

24 As the expression of FANCI p.L605F appeared to be lower than the WT or p.P55L
25 isoforms, even when increasing the quantity of plasmid (**Figure 2a, Supplementary Figure 1**),
26 we suspected that this protein isoform was unstable. To investigate protein stability, cells

1 expressing FANCI wild type protein, or either of the p.L605F and p.P55L isoforms, were treated
2 with cycloheximide (CHX) to inhibit protein synthesis and then treated with MMC or
3 formaldehyde to induce DNA damage. FANCI protein levels decreased over time in response to
4 both DNA damaging agents (**Figure 2d-f, Supplementary Figure 1**). This effect was more
5 prominent in FANCI p.L605F expressing cells as compared to wild-type FANCI or p.P55L
6 expressing cells. These observations suggest that treatment with genotoxic agents exacerbates
7 FANCI p.L605F protein instability. This is in agreement with the observation that FANCI
8 p.L605F failed to complement survival of the HeLa FANCI^{-/-} cells that were challenged with the
9 platinum compound cisplatin (**Figure 2g, Supplementary Figure 1**). In contrast, FANCI^{-/-} cells
10 were not sensitive to olaparib, a PARPi (**Figure 2g, Supplementary Figure 1**).

11 FANCI c.1813C>T carriers are enriched in familial OC cases of FC descent

12 Based on the anticipated founder effects of the FC population^{30,46,47}, we assessed
13 FANCI c.1813C>T carrier frequency in available PBL DNA from index OC or BC cases of FC
14 descent to determine if this variant plays a role in conferring risk in phenotypically defined
15 cancer families^{18,19,48–55,20,21,23,24,30,32,33,39}. These OC or BC cases were selected based on their
16 family history of OC or BC, or regardless of cancer family history (referred to as sporadic cases
17 in this study), where BRCA1 and BRCA2 pathogenic variant carrier status was known^{30,32,33,46–}
18 ^{51,56–59}. Index OC cases from OC families (3/43, 7%) and index BC cases from hereditary breast
19 and OC (HBOC) families (3/82, 3.7%) had a higher carrier frequency than BC cases from
20 hereditary BC (HBC) families (3/158, 1.9%), though this difference was not statistically
21 significant (p=0.41) (**Table 1, Figure 3, Supplementary Figure 2**).

22 The FANCI variant carrier frequency was also higher in sporadic OC cases (7/439,
23 1.6%) than sporadic BC cases (8/558, 1.4%) though this difference was not statistically
24 significant (p=1) (**Table 1**). When taken together, FANCI c.1813C>T variant carrier frequency
25 was highest in index OC or BC cases from OC and HBOC families, respectively, and sporadic
26 OC cases as compared with sporadic BC cases (**Table 1**). The highest frequency of FANCI

1 variant carriers was in OC index cases from OC families (at 9.1% [all] or 12.5% [*BRCA1* and
2 *BRCA2* mutation-negative]) when also including the multi-case discovery family in this group,
3 which is significantly higher compared to sporadic OC cases ($p=0.012$ [all] or $p=0.01$ [*BRCA1*
4 and *BRCA2* mutation-negative]).

5 Cancer-free FC *FANCI* c.1813C>T carriers are significantly correlated with having a first-degree
6 relative with OC

7 Since our initial discovery of the *FANCI* c.1813C>T variant, new data has become
8 available from the CARTaGENE biobank enabling the evaluation of its allele frequency in study
9 subjects from a cancer-free female FC population, and thus providing a more comparable
10 reference group to our FC cancer subjects⁶⁰. Using data from three different genotyping
11 platforms, we estimated a 1.2% VAF in cancer-free FC female (**Supplementary Table 2**). This
12 is not significantly different from the 1% estimated VAF in non-Finnish EURs, a population most
13 likely to share common ancestry with FCs (France)^{26,27}, as reported in the Genome Aggregation
14 Database (gnomAD)⁶¹ (**Supplementary Table 2**). In this database the VAF varied across
15 populations: highest in Estonians (2.1%) to none in East Asians.

16 The estimated heterozygous carrier frequency at 2.5% in cancer-free FC females was
17 lower than that observed in index cancer cases from OC (7%) and HBOC (3.7%) families, but
18 higher than observed in sporadic OC cases (1.6%) and index BC cases from HBC families
19 (1.9%), though these differences were not statistically significant (**Table 1**). Notable was a trend
20 towards statistical significance for the presence of variant carriers in OC families with the
21 inclusion of the multi-case OC discovery family in our analysis ($p=0.026$ [all] or $p=0.023$ [*BRCA1*
22 and *BRCA2* mutation-negative]).

23 Additional information was available from the CARTaGENE subjects to investigate
24 *FANCI* c.1813C>T carrier frequency in the context of cancer family history (first-degree only),
25 reproductive history, oral contraceptive pill (OCP) use, oophorectomy, and tubal (fallopian)
26 ligation; all of which are factors that are known to significantly impact lifetime risk of OC^{62,63}. We

1 observed that cancer-free variant carriers (male or female) were significantly correlated with
2 having a first-degree relative with OC ($\rho=0.037$; $p=0.011$), when analyzing data from subjects
3 genotyped with arrays that included probes for the variant allele ($n=7272$) (**Supplementary**
4 **Table 3**). This finding is consistent with OC family history as a risk factor for OC⁴. When adding
5 data from cancer-free female and male subjects where genotypes were imputed ($n=927$) variant
6 allele carriers were correlated with having a first-degree relative with OC or BC ($\rho=0.026$;
7 $p=0.046$) (**Supplementary Table 3, Supplementary Table 4**). No other cancer type was
8 significantly correlated with variant carrier status. Notably, the majority of cancer-free FC
9 females were parous (78%; 2315/2950) and 91.8% (2710/2950) had experienced OCP use,
10 oophorectomy, and/or tubal ligation (**Supplementary Table 5**), as all of these factors are known
11 to significantly decrease OC risk^{9,10,64–73}. Only 8.1% (6/74) of variant carriers reported having
12 never experienced any of these risk reducing events.

13 Other potentially pathogenic *FANCI* variants are rare in OC and BC cases of FC descent

14 To determine if there are other potentially pathogenic *FANCI* variants ($VAF<1\%$) in FCs,
15 we investigated available WES data from 81 familial and/or young age of onset OC cases and
16 76 BC cases from HBC/HBOC families, regardless of *BRCA1* or *BRCA2* pathogenic variant
17 carrier status (**Supplementary Table 1**). In all, we identified seven rare variants among 33
18 index OC familial cases, where one carrier was heterozygous for *FANCI* c.1573A>G; p.M525V
19 (**Supplementary Table 6**). Although the missense variant is predicted to result in a methionine
20 to valine change affecting a highly conserved amino acid residue at position 525 (GERP++
21 score = 5.68) and to be potentially pathogenic by 7/14 *in silico* tools, our *in vitro* analyses
22 suggested that it does not encode an aberrantly functioning protein (data not shown). Thus,
23 *FANCI* c.1813C>T is the only plausible potentially pathogenic variant identified in FC OC/BC
24 cases (**Figure 4a**).

25

26

1 OC and BC cases of non-FC descent also carry potentially pathogenic *FANCI* variants

2 To determine if there are carriers of rare potentially pathogenic *FANCI* variants in non-
3 FC populations, we investigated available WES data from 516 AUS HGSC cases⁷⁴ and 63 CDN
4 BC families, all *BRCA1* and *BRCA2* mutation-negative (**Supplementary Table 1**). We also
5 investigated available sequencing data for *FANCI* from 4,878 AUS cancer-free controls.
6 Principal component analysis of the AUS cases and controls using data from ethnicity
7 associated single nucleotide polymorphisms (SNP) suggested that >95% of these cases are of
8 Western EUR ancestry, whereas mixed EUR ancestry was reported for CDN cases.

9 In all, we identified a total of 18 and 92 rare (VAF<1%) *FANCI* variants in the AUS
10 HGSC cases and controls, respectively. There were 17 carriers of eight potentially pathogenic
11 missense variants in 516 HGSC cases (3.3%), where 10 (1.9%) carried *FANCI* c.1813C>T
12 (**Table 2, Figure 4b, d, Supplementary Table 6**). In AUS controls, we identified 133 carriers of
13 32 different potentially pathogenic missense variants (2.7%), where 95 (1.9%) carried *FANCI*
14 c.1813C>T. The number of carriers of potentially pathogenic variants in *FANCI* was not
15 significantly different between AUS cases and controls (p=0.48), including *FANCI* c.1813C>T
16 (p=1).

17 *FANCI* carriers were diagnosed with OC between the ages of 31-82 years
18 (**Supplementary Table 7**). Five of the c.1813C>T carriers had a family history of OC within third
19 degree relatives (5/98, 5.1%), which was significantly higher than the carrier frequency of this
20 variant in isolated cases of HGSC cases (5/418, 1.2%; p=0.025) (**Table 2**). In contrast, there
21 was no significant difference in the carrier frequency of *FANCI* c.1813C>T in cases with a
22 reported family history of OC or BC (6/262, 2.3%) than those without (4/254, 1.6%; p=0.75).
23 *FANCI* c.1813C>T co-occurred with another potentially pathogenic missense variant, *FANCI*
24 c.2366C>T; p.A789V, in a HGSC case with a family history of OC. Two carriers of other
25 potentially pathogenic variants in *FANCI* (c.1264G>A; p.G422R and c.1412C>G; p.P471R) also
26 had a family history of OC (**Table 2**). The number of carriers of potentially pathogenic *FANCI*

1 variants with a family history of OC (7/98, 7.1%) was significantly different than isolated cases of
2 HGSC ($p=0.027$), but there was no significant difference when accounting for family history of
3 OC or BC ($p=1$). In contrast, *FANCI* c.1813C>T was the only variant identified in 1/63 (1.6%)
4 familial CDN BC cases (**Figure 4c, Supplementary Table 6**) and the carrier is known to be of
5 Greek Canadian origin.

6 The association of potentially pathogenic variants in HGSC cases was compared with
7 controls in AUS study subjects (**Table 3**). There was no significant difference in allele
8 frequencies of *FANCI* variants in cases versus controls, though odds ratios (ORs) were >1 for
9 three of these variants. As not all *FANCI* variants were identified in AUS controls, we used data
10 from the non-cancer samples in the gnomAD database⁶¹ to evaluate the ORs. The allele
11 frequency of all gnomAD samples was used as the AUS population is likely of mixed ancestry
12 as exemplified by the observation that c.13A>G; p.I5V was only identified in the East Asian
13 population in gnomAD (**Supplementary Table 6**). The OR was >12 for six of seven of the rarest
14 *FANCI* variants (VAF<0.1%), in contrast to 1.46 for the most common *FANCI* c.1813C>T
15 (**Supplementary Table 8**). *FANCI* c.286G>A had an OR <1 when compared to all gnomAD
16 samples⁶¹. However, when this analysis was performed with data from the non-Finnish EUR
17 population, the rationale being that over 90% of AUS cases are likely of white EUR ancestry, the
18 OR was >3 (**Supplementary Table 8**). Our findings suggest that rare potentially pathogenic
19 *FANCI* variants, including *FANCI* c.1813C>T, may play a role in hereditary OC cases from AUS
20 cases.

21 To further evaluate the effect of *FANCI* variants in conferring risk to OC and BC in non-
22 FC populations, we investigated rare variants (VAF<1%) from imputed SNP array data that was
23 available from two case-control studies: Ovarian Cancer Association Consortium (OCAC)⁷⁵ and
24 Breast Cancer Association Consortium (BCAC)^{76,77}. In all, nine missense and one splice site
25 variant were identified in OCAC and BCAC databases. With the exception of *FANCI* c.1813C>T
26 none of the other missense variants were predicted to be potentially pathogenic

1 **(Supplementary Table 9)**. The data imputed from the OCAC database⁷⁵ revealed that the OR
2 for *FANCI* c.1813C>T was highest in endometrioid and HGSC subtypes compared to all
3 histopathological subtypes combined, though there was no significant difference in allele
4 frequency in OC cases compared to controls **(Supplementary Table 10)**. To compare to a
5 known OC pathogenic variant, OCAC data was investigated for the most common pathogenic
6 *BRCA1* variant reported in FCs, c.4327C>T; p.R1443X, which is one of the most commonly
7 reported variants from populations of EUR descent⁴⁶. The OR was highest in HGSC cases,
8 though there was no significant difference in allele frequency when all OC subtype cases were
9 compared to controls **(Supplementary Table 10)**. There was no significant difference in allele
10 frequency between BC cases and controls for *FANCI* c.1813C>T in a similar analysis of BCAC
11 case-control data^{76,77} (*BRCA1* c.4327C>T data was not available in the BCAC database)
12 **(Supplementary Table 10)**. These findings show that *FANCI* c.1813C>T carriers occurred in
13 non-FC populations and suggest a trend towards c.1813C>T carriers in HGSC and
14 endometrioid OC as compared to other OC subtypes.

15 Clinical features of FC OC from *FANCI* c.1813C>T carriers are similar to those of HGSC cases

16 We reviewed available clinical characteristics of OC in *FANCI* c.1813C>T carriers as
17 CPGs have been associated with specific subtypes of OC. For example, pathogenic *BRCA1*
18 variants are often associated with HGSC and high-grade endometrioid subtypes of OC and
19 younger age at diagnosis^{39,78–81}. Given the paucity of *FANCI* variants, we focused on 13 FC OC
20 carriers of *FANCI* c.1813C>T variant **(Table 1)** and noted that 12 had serous and one had a
21 mucinous subtype OC **(Supplementary Table 7)**. The seven carriers found in the context of
22 sporadic OC cases **(Table 1)** were reported as HGSC subtype. The remaining six carriers were
23 identified in OC case with a known family history of cancer **(Table 1)**, where five had serous
24 subtype OC and one had a mucinous subtype OC. Though the sample size was limited, there
25 appeared to be no striking differences in the ages of the diagnosis for OC in carriers where age
26 ranged from 40 to 81 years (average = 59.2 years) as compared with non-carriers in the

1 sporadic OC group (average = 61 years), and aligned with average age of diagnosis of OC in
2 the North American population¹ (**Supplementary Table 7**).

3 Survival data, available for sporadic OC cases, showed that all seven *FANCI* c.1813C>T
4 carriers were deceased having had an average survival of 61.1 months (range 9-163). Due to
5 sample size we were unable to perform survival analysis using Kaplan-Meier estimation: 57%
6 (4/5) OC cases did not survive past five years though it should be noted that one of these cases
7 survived 61 months (**Supplementary Table 7**). Survival past 61 months in *FANCI* c.1813C>T
8 carriers (2/7; 28%) is comparable to non-carrier sporadic HGSC cases (100/334; 30%).

9 Co-occurrence of other potentially pathogenic variants in OC predisposing genes in *FANCI* 10 c.1813C>T carriers

11 To further characterize the germline genomic landscape of *FANCI* c.1813C>T carriers,
12 we performed WES analysis of all seven carriers identified in the sporadic FC OC cases and
13 compared it with WES data from five carriers identified in OC families (**Table 1**). We analyzed
14 *FANCI* c.1813C>T OC (n=12) carriers for the co-occurrence of pathogenic variants in known
15 high-risk OC predisposing genes³², as these variants are known to significantly increase cancer
16 risk. Only previously known carriers of *BRCA1* (F1055 and F1520) or *BRCA2* (F762) pathogenic
17 variants in familial cases were identified (**Table 1, Supplementary Figure 2**). None of the
18 sporadic OC cases (n=7) carried pathogenic variants in *BRCA1*, *BRCA2*, *BRIP1*, *RAD51C*, and
19 *RAD51D*. Moreover, the *FANCI* c.1813C>T variant did not co-occur in carriers of the recently
20 reported potentially pathogenic *RAD51D* c.620C>T; p.S207L³³ variant found to recur in
21 sporadic FC HGSC cases³³.

22 *FANCI* protein is expressed at low-to-moderate levels in HGSC tumour samples

23 As *FANCI* protein expression has not been investigated in OC nor fallopian tube
24 epithelial (FTE) cells, a proposed tissue of origin for the HGSC subtype⁸³⁻⁸⁹, we performed
25 immunohistochemistry (IHC) analysis of an available tissue microarray (TMA) containing cores
26 from formalin-fixed paraffin-embedded (FFPE) tumor tissues. IHC analysis of fallopian tube

1 revealed strong nuclear and low-to-moderate cytoplasmic staining in FTE cells in contrast to
2 stromal cell components where staining was low or undetectable (**Figure 5a, Supplementary**
3 **Figure 3**). These observations suggest that FANCI protein is robustly expressed in cells
4 associated with the origins of HGSC. In contrast, IHC analysis of tumour cells in HGSC tissue
5 cores exhibited variable staining (**Figure 5b, Supplementary Figure 3**), where the majority
6 (83/94, 88.3%) exhibited low-to-moderate staining intensity. All HGSC tissue cores exhibited
7 strong nuclear and moderate cytoplasmic staining in epithelial cell components, in contrast to
8 the stromal cell components where staining intensity was low or undetectable. A separate IHC
9 analysis of tumour tissues available from eight *FANCI* c.1813C>T carriers revealed a range of
10 staining intensity (**Supplementary Figure 3**), consistent with the expectation that the variant
11 allele could be expressed in tumours (**Figure 2a**). Using Kaplan-Meier survival analysis we
12 found no correlation of staining intensity in epithelial tumour cell components of the HGSC
13 tissue cores with overall or progression free survival (**Figure 5c**). Moreover, age at diagnosis,
14 disease stage, residual disease, chemotherapy type, and survival (disease-free and 5-year)
15 were not correlated with the intensity of protein staining. We were not able to similarly
16 investigate *FANCI* variant c.1813C>T; p.L605F carriers due to the small number of cases. In
17 cases (n=90) that received standard of care chemotherapy (adjuvant taxol and carboplatin)
18 there appeared to be a trend towards lower FANCI staining intensity in HGSC tumour cores
19 from cases having had a prolonged disease-free survival ($p = 0.124$) (**Figure 5c**).

1 Discussion

2 Our investigation of *FANCI* c.1813 C>T identified by WES analysis of a *BRCA1* and
3 *BRCA2* mutation-negative multi-case OC family of FC descent suggests that this variant may
4 play a role in OC risk. Our investigation was predicated upon the strong founder effects
5 observed in FCs of Quebec and the expectation that candidate risk alleles would recur and thus
6 could be readily identified due to common ancestors in this population^{26,27}. Our strategy focused
7 on screening this variant in *BRCA1* and *BRCA2* mutation-negative multi-case OC families of FC
8 descent with the expectation that familial aggregation of OC is not by chance but due to an
9 underlying genetic factor. Given founder effects, we also expected that our candidate alleles
10 would recur in sporadic FC OC cases. Indeed, we showed that *FANCI* c.1813 C>T not only
11 recurs in FCs but is found at a higher frequency in OC cases with a family history of OC relative
12 to sporadic OC cases and cancer-free controls from the same population. Taken together these
13 findings support a role for *FANCI* c.1813C> in modifying OC risk in the FC population.

14 *FANCI* c.1813C>T was the only potentially pathogenic *FANCI* variant identified in our
15 study of FC cancer cases. Our findings are reminiscent of the recurrence of specific variants in
16 familial FC cancer populations of Quebec, such as *RAD51D* c.620C>T; p.S207L in familial and
17 sporadic OC cases³³, *PALB2* c.2323C>T; p.Q775X in BC cases and HBC families^{32,90}, and
18 *MSH6* c.10C>T; p.Q4X in colorectal cancer (Lynch Syndrome) families⁹¹. Given the genetic
19 demography of the FC population of Quebec, it is likely that carriers of *FANCI* c.1813C>T have
20 common ancestors as has been shown with carriers of specific recurrent pathogenic variants in
21 *BRCA1*^{48,92}, *BRCA2*^{47,48,93}, and *MSH6*⁹¹ reported in cancer families. As has been reported with
22 all of these examples of CPGs in non-FC populations, we expected an array of potentially
23 pathogenic variants in our candidate gene. Indeed, we observed eight potentially pathogenic
24 *FANCI* variants in AUS HGSC cases, which included c.1813C>T. A recent genome-wide
25 discovery study of AUS HGSC cases did not report *FANCI* among the list of potentially new
26 CPGs for OC⁷⁴. However, the missense *FANCI* variants found in our analysis of AUS samples,

1 which were investigated in both studies, would have been excluded due to a focus on LoF
2 variants⁷⁴. Our investigation of HGSC cases from the AUS population thus also suggest that
3 FANCI variants may also play a role in OC in non-FC populations.

4 Although a mechanism of action for *FANCI* in OC risk is unknown, our findings suggest
5 that the *FANCI* c.1813C>T variant affects gene function. This is suggested by the instability of
6 the variant encoded isoform based on our *in vitro* analyses. Though tumour DNA was not
7 available for all of our variant carriers, Sanger sequencing of DNA from FFPE tumour cells
8 suggest loss of the wild type allele and retention of the variant allele had occurred in two FC
9 HGSC *FANCI* c.1813C>T carriers, as shown in **Supplementary Figure 4**. Interestingly, tumour
10 samples from a bilateral OC case predominantly exhibited the *FANCI* variant allele suggesting
11 that loss of the wild type allele could have been be an early event in tumour progression in this
12 case. Also, HGSC samples from both cases had acquired somatic pathogenic variants in *TP53*,
13 a known major driver of the majority of HGSC^{94,95}. Our IHC analyses showed differential FANCI
14 protein expression, with a high proportion of HGSC tumour cells exhibiting low-to-moderate
15 levels of protein expression. This is in contrast to robust FANCI protein expression observed in
16 FTE cells, a purported origin of HGSC^{83–89}. All of these findings suggest loss of *FANCI* may play
17 a role in OC akin to that suggested by other CPGs in the HR pathway, such as *BRCA1* and
18 *BRCA2*⁹⁶. In keeping with this hypothesis is that loss of the chromosome 15q arm, which
19 contains the *FANCI* locus (15q26.1), has been reported in 55% of 978 HGSC samples by The
20 Cancer Genome Atlas (TCGA) project⁹⁵. A review of available genomic data from TCGA project
21 (cbioportal.org) revealed that five tumour samples likely had homozygous deletions involving the
22 *FANCI* locus and all such samples exhibited low *FANCI* mRNA expression. As expected by
23 observations from previous studies of the genomic landscape of HGSC tumour DNA, somatic
24 potentially pathogenic variants in *FANCI* are also rare (<1%)⁹⁵.

25 Based on available genetic data from non-Finnish EURs, a population comparable to the
26 ancestral origins of FCs, the allele frequency of *FANCI* c.1813C>T at 1% is higher than

1 expected as compared to many pathogenic variants in established CPGs such as *BRCA1* and
2 *BRCA2*, or the recently proposed OC risk genes, such as *RAD51D*^{33,46}. Similarly, the carrier
3 frequency of c.1813C>T in AUS cancer-free controls at 1.9% was more common than
4 anticipated. The carrier frequency of c.1813C>T in the general population is reminiscent of the
5 more common potentially pathogenic *CHEK2* c.1100delC variant, a moderate risk BC
6 predisposing variant, which was originally identified at a frequency of 1.4% in population
7 controls⁹⁷. Moreover, this *CHEK2* variant was also found more frequently in BC cases from HBC
8 families than sporadic BC cases, relative to healthy controls⁹⁷. Similarly, LoF germline variants
9 in *BRIP1* were more frequently identified in OC cases with a family history of OC than with a
10 family history of BC only, relative to control cohorts⁹⁸. Although our findings of estimating the
11 overall risk to OC using OCAC data was inconclusive, we estimated that carriers of *FANCI*
12 c.1813C>T variant in FC *BRCA1* and *BRCA2* mutation-negative OC families have increased
13 risk based on the OR of 5.6 ($p=0.006$; 95% CI=1.6-19). Though the confidence interval is wide,
14 due to the small sample size, our findings are supported by the observation that cancer-free
15 *FANCI* c.1813C>T carriers (male or female) were significantly correlated with having a first-
16 degree relative with OC in the FC population, using CARTaGENE data.

17 It is interesting that *rs8037137*, which is located 1.68 mega-base pairs downstream of
18 *FANCI* c.1813C>T, was among the polymorphic genetic markers found significantly associated
19 with risk to either invasive epithelial or HGSC subtype OC in a large genome wide association
20 analysis of OCAC data⁷⁵. Consistent with these findings is our observation that the OR for
21 *FANCI* c.1813C>T in the OCAC study groups are highest in endometrioid and HGSC subtype
22 OC cases. A similar analysis of other potentially pathogenic *FANCI* variants identified in our
23 study was not possible as corresponding genetic data was not available in the OCAC database.
24 These observations, along with higher frequency of *FANCI* c.1813C>T in familial and sporadic
25 OC cases relative to cancer-free controls, suggest the possibility that *FANCI* c.1813C>T may
26 modify risk to OC at levels lower than high risk pathogenic variants found in *BRCA1* and

1 *BRCA2*. Though the allele frequency of our rare *FANCI* variant was higher in familial OC cases
2 relative to sporadic forms of the disease in FC OC cases, we are mindful of the limitations of our
3 study due to sample size. Therefore to further investigate this hypothesis about levels of risk to
4 OC, we estimated a sample size of approximately 100 OC families and 7,000 female cancer-
5 free controls or 13,000 HGSC cases and 115,000 female cancer-free controls to achieve 80%
6 power would be required (<https://www.openepi.com/SampleSize/SSCC.htm>), numbers that are
7 currently unattainable in FCs.

8 The role of *FANCI* c.1813C>T in modifying risk to BC is unclear. Although variant
9 carriers were found in FC familial BC cases, there were proportionally more carriers in BC cases
10 from HBOC families than in HBC families. We also identified a variant carrier in a BC family of
11 Greek Canadian origin: this family was also ascertained from the same catchment area as many
12 of our FC cancer families. In our analysis of FC cancer-free controls that included imputed
13 genotypes, variant carriers were significantly correlated with having a first-degree relative with
14 OC or BC. These findings are in part reminiscent of the variable penetrance for BC and OC for
15 known high risk CPGs, where carriers are more likely to harbour pathogenic variants in *BRCA1*
16 or *BRCA2* (or *PALB2*) based on family history of BC and OC⁴⁸. Thus, it is possible that *FANCI*
17 c.1813C>T confers risk to BC that is lower or more variable than for OC. However, there have
18 been independent reports of BC cases carrying other *FANCI* variants with VAF 10^{-3} to 10^{-6} in
19 cancer-free individuals. At least 19 different variants have been described in familial and/or
20 sporadic BC cases: four nonsense, three frameshift, two splicing, and 10 missense variants
21 (see **Supplementary Figure 5** and **Supplementary Table 11**)^{99–106}. These *FANCI* variants
22 were reported in Finnish¹⁰⁴ (4/1524, 0.3%), Chinese¹⁰³ (1/99, 1%), and two Spanish^{101,105} (1/154,
23 0.6% and 1/94, 1.1%) studies. It is possible that these rare *FANCI* variants, which include
24 putative LoF variants, affect BC risk in various populations.

25 There have been reports of *FANCI* variant carriers in a variety of cancer types such as
26 prostate cancer^{104,107,108}, sarcoma¹⁰⁹, malignant pleural mesothelioma¹¹⁰, acute myeloid

1 leukemia¹¹¹, head and neck carcinoma¹¹², and colorectal cancer¹¹³ (see **Supplementary Figure**
2 **5** and **Supplementary Table 12**). Although we also observed colorectal cancers in our *FANCI*
3 variant carrier families of FC descent, a pedigree review found no significant differences in the
4 number of colorectal cancer cases in pedigrees from variant carriers as compared to non-
5 carriers ($p=0.47$). This observation is consistent with our analysis of family history of cancer-free
6 carriers in the FC population using the CARTaGENE biobank. The role of *FANCI* variants in
7 other cancer types remains to be determined.

8 Research has shown that *FANCI* plays a role in the response to DNA damage. *FANCI*
9 regulates the recruitment of the FA core complex to sites of interstrand crosslinks, and thus
10 plays an important function upstream in the FA-HR DNA repair pathway¹¹⁴. *FANCI* encodes one
11 of only two proteins that comprise the ID2 complex, the other being *FANCD2*, which is distinct
12 from the FA core complex that includes proteins such as *FANCC* and *FANCM* (reviewed by
13 Niraj et al.¹¹⁵). *In vitro* cell lines modeling pathogenic variants or gene knock outs of *BRCA1*,
14 *PALB2*, or *RAD51D* have exhibited sensitivity to cisplatin and PARPi's, providing some insight
15 into their role in DNA repair^{33,116–118}. Our observations in cell lines expressing the *FANCI*
16 p.L605F isoform differs in that we observed sensitivity to cisplatin but not to the PARPi, olaparib.
17 These findings are consistent with an independent report showing lack of sensitivity to a PARPi
18 (KU0058948) in a fibroblast cell line transduced with HPV E6/E7 from a *FANCI* FA patient, as
19 well as in cell lines generated from *FANCA*, *FANCL*, *FANCD2* and *FANCI* (*BRIP1*) patients¹¹⁹.
20 The indirect role of *FANCI* in HR DNA repair and recent evidence suggesting that *FANCI* also
21 has functions independent from the FA DNA repair pathway^{120–124} may be consistent with our *in*
22 *vitro* studies. Two *FANCI* c.1813C>T variant carriers survived over five years after initial
23 diagnosis (nine and 13.5 years). The lengthy survival time is unusual given the overall five- and
24 ten-year survival rates of 32% and 15%, respectively, reported for advanced stage HGSC cases
25 in North America⁶. Further studies of *FANCI* are warranted as these findings are consistent with

1 our observation of a trend towards low FANCI protein expression with better disease-free
2 survival in HGSC cases, though these findings are not significant.

3 Although the biological role of FANCI remains to be elucidated, biallelic inactivation of
4 *FANCI* has been associated with FA, a rare disease that is characterized by congenital defects
5 and developmental disabilities^{34–36}. FA is a heterogenous disease with 22 known causal genes,
6 where *FANCI* cases comprise approximately 1% of all FA diagnoses¹²⁵. As *FANCI* associated
7 FA cases are rare, the incidence of cancer in biallelic carriers has not been reported.
8 Interestingly, though a Fanci knockout mouse model was recently reported showing a low
9 Mendelian ratio there was no information on cancer incidence¹²⁶.

10 This is the first study to describe potentially pathogenic variants in *FANCI* in the context
11 of familial OC and in a member of the ID2 complex of the FA DNA repair pathway. Our strategy
12 of investigating familial and sporadic cancer cases from a population showing strong founder
13 effects and pursuing *in vitro* molecular analysis of missense variant found to recur in cancer
14 cases contributed to the discovery of *FANCI* as a new candidate OC risk gene. While the
15 feasibility of experimenting with missense variants at the molecular level can be an issue, this
16 study reveals the importance of pursuing such variants during the gene discovery phase,
17 especially when plausible candidates based on gene function are revealed by WES analyses of
18 defined cancer families. Although some of the identified *FANCI* variants are predicted to affect
19 gene function as shown in our *in vitro* analyses of *FANCI* c.1813C>T encoded isoform, further
20 studies are warranted to evaluate their role in OC risk. Establishing risk is important in the
21 context of familial aggregations of OC and host behaviours that modify risk to OC, as has been
22 shown with OCP use in carriers of pathogenic *BRCA1* and *BRCA2* variants⁷⁰. An investigation
23 of carriers of potentially pathogenic *FANCI* variants is also warranted given the intriguing
24 observation of sensitivity to cisplatin but not to olaparib in our *in vitro* studies of *FANCI*
25 c.1813C>T, as this might impact the efficacy of PARPi's in the treatment of HGSC in these
26 cases.

1 **Methods**

2 Study subjects, samples, and DNA sequencing

3 Information about the study subjects, PBL and tumour DNA samples, and FFPE tissues
4 of HGSC cases and normal fallopian tube used for TMAs were obtained from various
5 biobanking resources (**Supplementary Table 1**). The OC samples from Réseau de recherche
6 sur le cancer (RRCancer) Tumour and Data biobank derived its collection from patients
7 attending a major gynecologic oncology hospital centre in Montreal. This centre largely services
8 FCs, where it is estimated that 85% of samples come from participants who self-identify as
9 FC₄₆. Samples within this collection with a familial history of OC and/or BC have been
10 extensively studied, where the majority self-report grandparental FC ancestry of index cancer
11 affected cases^{30,48,49}. This project has received approval from The McGill University Health
12 Centre (MUHC) REB (MP-37-2019-4783 and 2017-2722). To further protect the anonymity of
13 study subjects, all samples were assigned a unique identifier.

14 *Discovery of FANCI c.1813C>T in an OC family*

15 The *FANCI* c.1813 C>T variant was initially discovered by WES and bioinformatic
16 analyses of PBL DNA from sisters, both with OC, from family F1528 that were performed at the
17 McGill Genome Centre (MGC). This multi-case OC family of FC descent, available from the
18 RRCancer biobank, has been described previously as a *BRCA1* and *BRCA2* mutation-negative
19 family³⁹ and has since been updated to include new information, including histopathology of OC
20 and a reported case of ear, nose, and throat cancer (**Figure 1**). PBL DNA (~500 ng) from two
21 sisters from this family was captured with the Agilent SureSelect 50 Mb exome capture
22 oligonucleotide library, and then sequenced with paired-end 100 bp reads on Illumina HiSeq
23 2000. After removing putative PCR-generated duplicate reads using Picard (V.1.48),
24 sequencing reads were aligned to human genome assembly hg19 using a Burroughs–Wheeler
25 algorithm (BWA V.0.5.9). Sequence variants were called using Samtools (V.0.1.17) mpileup and
26 varFilter meeting the following criteria: at least three variant reads, ≥20% variant reads for each

1 called position, and Phred-like quality scores of ≥ 20 for SNPs and ≥ 50 for small insertions or
2 deletions. Annovar¹²⁷ and custom scripts were used to annotate variants according to the type
3 of variant, Single Nucleotide Polymorphism database designation (dbSNP), Sorting Intolerant
4 from Tolerant (SIFT) score¹²⁸, and allele frequency data from the 1000 Genomes Project⁴⁵ and
5 NHLBI ESP v.2014 (<https://evs.gs.washington.edu/EVS/>). Then, the variant list was organized
6 to select top candidate potentially pathogenic variants that were shared in common among the
7 two sisters by de-prioritizing the following: (1) synonymous or intronic variants other than those
8 affecting the consensus splice sites; (2) variants seen in more than 5 of 416 exomes from
9 patients with rare, monogenic diseases unrelated to cancer that were independently sequenced
10 and available at the MGC and (3) variants with a frequency $\geq 1\%$ in either the 1000 Genomes
11 Project or NHLBI exome datasets. Using a candidate gene approach, we then further prioritized
12 the list of candidates based on their role in FA-HR pathways. Using this strategy, *FANCI*
13 c.1813C>T was the only candidate remaining on the list of prioritized variants (n=276) shared in
14 common between the two sisters in family F1528. The presence of the *FANCI* variant was
15 verified using Integrative Genomics Viewer (IGV)¹²⁹. The *FANCI* c.1813C>T variant was
16 validated by targeted PCR analysis and Sanger sequencing at the MGC using standard
17 methods (see **Supplementary Table 13**).

18 Since the initial discovery of the *FANCI* variant in family F1528, newer WES technology
19 and bioinformatic tools became available, and thus we repeated our analysis with DNA from the
20 same sisters from this family. WES and bioinformatic analyses were again performed at the
21 MGC using Roche NimbleGen SeqCap® EZ Exome Kit v3.0 (Roche Sequencing) followed by
22 HiSeq 100 bp paired-end sequencing (Illumina) applying manufacturer's protocols. Sequencing
23 reads were aligned to human genome assembly hg19 using BWA-MEM v0.7.17, then
24 deduplicated using Picard v2.9.0 (Broad Institute). Bases were recalibrated using the GATK
25 best practices. Variants were called using HaplotypeCaller available from GATK v3.5 (Broad
26 Institute) and recalibrated according to GATK best practices. The filtered variants were then

1 annotated and loaded into a GEMINI v0.19.1 database as per the recommended workflow. Data
2 was filtered for non-synonymous rare variants (VAF<1%) deduced from a publicly available
3 database gnomAD v2.1.1⁶¹ identified in genes with reported function in DNA repair pathways
4 (n=276¹³⁰). *FANCI* c.1813C>T was once again the only variant directly involved in the FA-HR
5 DNA repair pathway identified in both sisters. The presence of the *FANCI* variant was again
6 confirmed by IGV¹²⁹ and validated by PCR analysis and Sanger sequencing at the MGC using
7 standard methods (see **Supplementary Table 13**).

8 *Genetic analysis of FANCI c.1813C>T in FC cancer cases*

9 The allele frequency of *FANCI* c.1813C>T was determined by investigating selected
10 index OC or BC cases defined based on family history of OC and/or BC or sporadic disease
11 where cases were not selected based on family history of cancer, where all were self-reported
12 FC descent as previously described^{30,48,49} (see **Supplementary Table 1**). The average age of
13 diagnosis for OC families was 49.8 years (range 24-77). The average age of diagnosis was 44.6
14 years (range 22-65) and 43.7 years (range 18-65) for HBC and HBOC families, respectively.
15 Sporadic BC cases were diagnosed with invasive BC before the age of 70 (average = 52.7,
16 range 25-69)¹³¹. We cannot exclude the possibility that some cases occurred in more than one
17 study group: based on RRCancer biobanking sample number, OC cases from at least 13
18 families were also found in pedigrees from BC cases that were genotyped from the familial
19 HBOC study group.

20 Carriers of *FANCI* c.1813C>T were identified by targeted genotyping of PBL DNA
21 samples or from surveying available WES data (subjected to the same latest WES technology
22 and data analysis pipeline as described above) from affected cases in our study groups (see
23 **Supplementary Table 1**). PBL DNA from OC or BC cases were genotyped using a custom
24 TaqMan® genotyping assay¹³² based on established methods (see **Supplementary Table 14**).
25 Where normal DNA was no longer available from the study case, genomic DNA extracted from
26 the tumor (if available) was provided by the RRCancer biobank for genotyping. PBL DNA from

1 sporadic BC cases were genotyped using Sequenom® iPLEX® Gold Technology at the
2 MGC₁₃₁. Samples that were removed from the analysis were due to poor DNA quality (n=30),
3 duplication (n=1), or were from cases exceeding age limit criteria (70 years or older when
4 diagnosed with first invasive BC; n=2). Results from a total of 558 cases were evaluated for
5 *FANCI* c.1813C>T carrier status. The *FANCI* locus (NC_000015.9: g.89828441C>T) was
6 reviewed in WES data, validated by IGV analysis, and *FANCI* c.1813C>T variant carriers
7 verified by Sanger sequencing as described (see **Supplementary Table 13**).

8 *Genetic analysis of FANCI c.1813C>T in FC cancer-free controls*

9 Genotyping data was obtained from CARTaGENE (www.cartagene.qc.ca) from cancer-
10 free FC subjects as controls. The overall average age in this study group was 54.45 years
11 (range 39.06-71.05)⁶⁰. The study subjects were comprised of 2,627 females (average age =
12 54.45 years; range 39.06-71.05) and 2018 males (average age = 55.3 years; range 39.1-70.9).
13 Selection criteria for individuals with genotyping data are biased towards individuals with higher
14 quantity of health data (see **Supplementary Table 4**). Individuals were defined as FC if they
15 were born in Quebec, their parents and all four grandparents were born in Canada, and French
16 was the first language learned. Genotyping data was available from samples that were
17 genotyped in three different batches of experiments that used two different genotyping platforms
18 (Illumina and Affymetrix; see **Supplementary Table 4**). Data was imputed when there was no
19 representative probe for a locus on the genotyping array using the Sanger Imputation Service
20 (<https://imputation.sanger.ac.uk/>) with Haplotype Reference Consortium (release 1.1) as the
21 reference panel¹³³. Pre-phasing and imputation was performed using Eagle2¹³⁴ and the
22 positional Burrows-Wheeler transform (PBWT)¹³⁵. Samples were removed as part of quality
23 control to improve imputation of the array (see **Supplementary Table 4**).

24 *Statistical analyses of FANCI c.1813C>T frequency in FC cancer cases and controls*

25 Two-sided Fisher exact test was used to compare frequencies of *FANCI* c.1813C>T
26 carriers in the cases and controls or between different study subjects, where a p-value of 0.05

1 was considered significant. ORs and 95% confidence intervals were estimated for all study
2 subjects for this allele.

3 *Genetic analysis of FANCI locus in FC cancer cases*

4 The *FANCI* locus was investigated in available WES data from 157 OC or BC cases of
5 FC descent (see **Supplementary Table 1**). Rare (VAF<1%) *FANCI* variants identified in WES
6 data were further subjected to bioinformatic analyses using up to 16 *in silico* predictive of the
7 effect of the nucleotide change(s), which includes two tools to predict splice site variants.
8 Variants were considered potentially pathogenic if they were predicted to be
9 pathogenic/deleterious in ≥ 8 tools for missense variants or two tools for splice site variants.
10 Nonsense variants were considered potentially pathogenic but in-frame deletions were not.
11 Variants were annotated using the Ensembl Variant Effect Predictor¹³⁶.

12 *Genetic analysis of FANCI c.1813C>T in OC and BC cases and controls from consortia* 13 *databases*

14 The *FANCI* locus was investigated in available OCAC and BCAC data. Summary
15 statistics including \log_2 OR, standard error (SE), X^2 , and p-value for 25,509 epithelial OC cases
16 (22,406 invasive) and 40,491 controls of EUR ancestry⁷⁵ were obtained from OCAC
17 (<http://ocac.ccge.medschl.cam.ac.uk>). Summary statistics were available for histopathological
18 subtypes as well as for the entire cohort in OCAC and have been previously summarized⁷⁵.
19 Summary statistics including \log_2 OR, standard error (SE), X^2 , and p-value for 46,785 cases and
20 42,892 controls of EUR ancestry^{76,77} were obtained from BCAC
21 (<http://bcac.ccge.medschl.cam.ac.uk>). Details of the subjects and genotyping analyses is
22 described elsewhere⁷⁵⁻⁷⁷. Summary statistics for *BRCA1* c.4327C>T and *rs8037137* loci were
23 obtained as comparators (see **Supplementary Table 10**). All rare (VAF<1%) *FANCI* variants
24 identified in OCAC and BCAC were subjected to the same bioinformatic analyses using *in silico*
25 tools as described.

1 *Genetic analysis of FANCI locus in AUS HGSC cases and controls*

2 The *FANCI* locus was investigated in germline sequencing data available from WES
3 analysis of HGSC cases ascertained from the AUS population as previously described⁷⁴. Briefly,
4 all AUS cases had ovarian, fallopian tube, or peritoneal cancer (n=516) and did not carry
5 pathogenic variants in *BRCA1* and/or *BRCA2* (see **Supplementary Table 1**). AUS controls
6 were ascertained from the lifepool study as previously described¹³⁷. Cancer-free women with
7 available sequencing results for *FANCI* (n=4,878) were included in this study. The identified rare
8 (VAF<1%) variants found in *FANCI* were subjected to the same bioinformatic analyses using *in*
9 *silico* tools as described.

10 *Genetic analysis of FANCI locus in CDN BC cases*

11 The *FANCI* locus was investigated in germline sequencing data available from WES
12 analysis of PBL DNA from female subjects with OC, BC, or pancreatic cancer (n=63) who were
13 recruited from centres in Montreal via the McGill Cancer Genetics Programme. All recruited
14 individuals had a strong family history of BC. A BRCAPro score¹³⁸, which is based on studies of
15 Ashkenazi Jewish and EUR descent individuals, was generated to predict the likelihood of
16 families carrying pathogenic variants in *BRCA1* or *BRCA2*. Individuals with a BRCAPro score of
17 >10%, but with no pathogenic variants in these genes were selected. Of this set, 14 individuals
18 were of Ashkenazi Jewish ancestry. *FANCI* variants were selected from PE125 WES data that
19 was generated using the Nextera Rapid Capture Exome enrichment kit (Illumina) followed by
20 HiSeq-4000 sequencing performed by the CRUK CI genomics core facility in the UK. Variant
21 Call Format files were generated with a standard pipeline following GATK Best Practices
22 recommendations for WES data. The identified rare (VAF<1%) variants found in *FANCI* were
23 subjected to the same bioinformatic analyses using *in silico* tools as described.

24

25

1 *Genetic analysis of variants in known OC predisposing genes and DNA repair genes in FANCI*
2 *c.1813C>T carriers*

3 Rare (VAF<1%) variants that were identified in known high risk epithelial OC
4 predisposing genes in the analysis of WES data from *FANCI* c.1813C>T carriers was
5 investigated using various bioinformatic tools. Pathogenicity was evaluated in BRCA
6 Exchange³¹ for *BRCA1* and *BRCA2* variants and ClinVar (<https://www.ncbi.nlm.nih.gov/clinvar/>)
7 for all variants. Rare (VAF<1%) variants in DNA repair pathway genes (n=276¹³⁰) were
8 evaluated in *FANCI* c.1813C>T carriers. The only variant identified that was shared in all cases
9 was *POLG* c.2492A>G and it was pursued further as described below.

10 The allele frequency of *POLG* c.2492A>G was determined by investigating selected
11 index OC or BC FC cases as above. Carriers of *POLG* c.2492A>G were identified by targeted
12 genotyping of PBL DNA samples or from surveying available WES data from affected cases
13 from our study groups as described. PBL DNA from OC or BC cases were genotyped using a
14 custom TaqMan® genotyping assay¹³² based on established methods (see **Supplementary**
15 **Table 14**). *POLG* c.2492A>G was reviewed in available WES data as above. Genotyping data
16 from CARTaGENE for cancer-free FC controls was investigated as above, including imputation
17 (see **Supplementary Table 4**). *POLG* c.2492A>G was subjected to the same bioinformatic
18 analyses using *in silico* tools as described.

19 *In vitro* analysis of *FANCI* c.1813C>T variant and *FANCI* encoded protein

20 *Cell lines, cell culture and reagents*

21 HeLa cells were grown in Dulbecco's modified Eagle's medium (Corning™ cellgro™),
22 supplemented with 10% Fetal Bovine Serum (Gibco™), at 37°C, 5% CO₂, 20% O₂. HeLa cells
23 KO for *FANCI* were obtained using the ALT-R CRISPR-Cas9 system from Integrated DNA
24 Technologies™. Cells were transfected with crRNA:tracrRNA:Cas9 RNP-complexes (crRNA
25 sequence: AATCCCCCGATTCCACCAAC), according the manufacturer's guidelines for
26 RiboNucleoProtein transfection using RNAimax. After transfection, genomic DNA from the pool

1 of transfected cells was extracted using QIAamp DNA Mini Kit (Qiagen, ref 51306). A 500 bp
2 DNA region containing the sgRNA complementing sequence was amplified by PCR from 400 ng
3 of genomic DNA with the Thermo Scientific™ Phusion™ High-Fidelity DNA Polymerase and
4 verified by sequencing using the following primers: Forward: 5'-
5 GTTACTGGACTTCTCAAAGCTGTAAG-3' and Reverse: 5'-
6 CTAGGTTGGGCACTTAAGTTTTTCCT-3'. Sequencing results from non-transfected cells and
7 genetically altered cells were compared using TIDE software to estimate the percentage of
8 genetically altered cells. Clones were then generated and selected based on FANCI protein
9 depletion using Western blot analysis. Two clones, clones 1 and 2, were used in this study.

10 When specified, cells were treated with MMC from *Streptomyces caespitosus* (Millipore-
11 Sigma, ref M0440) or Formaldehyde (BAKER ANALYZED® ACS, J.T. Baker®, ref CAJT2106).
12 For protein stability assays, CHX (Millipore-Sigma, ref C4859) was used at a final concentration
13 of 100 µg/ml.

14 *siRNA transfection and complementation assays*

15 Approximately 2.5×10^5 HeLa cells were transfected with 50 nM of siCTL
16 (UUCGAACGUGUCACGUCAA) or siFANCI (UGGCUAAUCACCAAGCUUAA) with RNAimax
17 (Invitrogen) according to the manufacturer's protocol. Then, after 24 hours, cells were transfected
18 again with the same siRNAs. After six hours, cells were complemented with the indicated
19 constructs of Flag-FANCI or pcDNA3 plasmid (empty vector) using Lipofectamine 2000
20 according to the manufacturer's protocol, using the following quantities of plasmids: 1 µg of WT,
21 3 µg of L605F and 1.5 µg of P55L.

22 *Protein extraction and immunoblotting*

23 Cells were collected by trypsinization and rinsed once in cold PBS. Cell pellets were
24 then incubated in lysis buffer (10 mM HEPES pH 7.4, 10 mM KCl, 1% Triton, 150 mM NaCl, 30
25 mM $\text{Na}_2\text{P}_2\text{O}_7 \cdot 10\text{H}_2\text{O}$, 1 mM EDTA and 1 µg/ml Leupeptin, 3.4 µg/ml Aprotinin, 1% PMSF, 5 mM
26 NaF, 1 mM Na_3VO_4 , Complete™ EDTA-free Protease Inhibitor Cocktail [Roche]) for 30 minutes

1 on ice. Cell lysates were then sonicated for 5 minutes (30 seconds on, 30 seconds off, high,
2 Bioruptor) and centrifuged for 30 minutes, 13000 rpm, 4°C. Supernatant was then processed for
3 immunoblotting analysis using the indicated antibodies.

4 *Antibodies for Western blotting and immunofluorescence assays*

5 The antibodies used were anti-FANCI (A7) (Santa Cruz Biotechnology, ref sc-271316,
6 1:100), anti-FANCD2 (Novus, ref NB100-182D1, 1:5000 for western-blot, 1:1000 for
7 immunofluorescence), and anti-vinculin (Sigma, ref V9131, 1:100000). Horseradish peroxidase-
8 conjugated anti-rabbit IgG or anti-mouse (1:10000; Jackson ImmunoResearch) were used as
9 secondary antibodies.

10 *Cisplatin and olaparib cell survival assays*

11 Approximately 3×10^5 HeLa Fanci^{-/-} cells were seeded into one well of a six-well plate.
12 After 24 hours, cells were complemented with the indicated Flag-FANCI construct using
13 Lipofectamine 2000 (Invitrogen), and then after another 24 hours seeded in triplicate into a
14 Corning 3603 black-sided clear bottom 96-well microplate at a density of 3500 cells per well.
15 The remaining cells were stored at -80°C until processing for protein extraction and
16 immunoblotting as described above. Once attached to the plate, the cells were exposed to
17 different concentrations of either 0-300 nM cisplatin (Tocris, #2251) or 0-2.5 μM olaparib. After
18 three days of treatment, nuclei were stained with Hoechst 33342 (Invitrogen) at 10 μg/ml in
19 media for 45 minutes at 37°C. Images of entire wells were captured at 4x magnification using a
20 Cytation™ 5 Cell Imaging Multi-Mode Reader and Hoechst-stained nuclei were quantified with
21 the Gen5 Data Analysis Software v3.03 (BioTek Instruments). Cell viability was expressed as
22 percentage of cell survival in olaparib-treated cells relative to vehicle (DMSO)-treated cells.
23 Results represent the mean ±SEM of at least three independent experiments, each performed
24 in triplicate.

25

26

1 *Immunofluorescence analyses*

2 HeLa Fanci^{-/-} cells were complemented with FLAG-FANCI variants and 0.1 µg of peGFP
3 (when specified) as described above. HeLa Fanci^{+/+} cells were transfected with siRNA and
4 complemented with siRNA resistant FANCI variants as described above. After 18 hours, cells
5 were seeded on a glass coverslip for eight hours and then treated with 50 ng/ml MMC for 18
6 hours and processed for immunofluorescence with anti-Flag (Cell signaling Technologies, ref
7 8146, 1:1600) and anti-FANCD2 (Novus, ref NB100-182D1, 1:800) antibodies according to the
8 protocol provided by Cell signaling technologies for Flag antibody. Alexa Fluor secondary
9 antibodies from Life Technologies (ref A-11001, A-11004, A21235) were used at 1:1000. In
10 HeLa Fanci^{-/-} cells, FANCD2 foci were counted in GFP positive cells. In siRNA transfected cells,
11 Flag positive cells were taken into consideration for the quantification of FANCD2 foci. Statistical
12 analysis was performed using GraphPad Prism 8. Mean with SEM are shown, and a Kruskal-
13 Wallis test was performed.

14 *Anti-Flag pulldown assays*

15 After siRNA transfection and complementation with Flag-FANCI WT or L605F, HeLa
16 FANCI^{+/+} cells were lysed in lysis buffer (50 mM Tris-HCl, pH 7.5, 150 mM NaCl, 0.5% NP-40)
17 containing protease and phosphatase inhibitors (1 mM PMSF, 0.019TI U/ml aprotinin, 1 mg/ml
18 leupeptin, 5 mM NaF, and 1mM Na₃VO₄) incubated for 30 minutes on ice, and lysed by
19 sonication. Insoluble material was removed by high-speed centrifugation (13000 rpm at 4°C)
20 and each immunoprecipitation (IP) was carried out using soluble protein extract in 1 ml of lysis
21 buffer. Fifty ml of anti-Flag M2 affinity gel (Sigma) and 70 U of DNase I were added and
22 incubated at 4°C for 2.5 hours. Beads were washed three times with washing buffer (50 mM
23 Tris-HCl pH 7.5, 250 mM NaCl, 0.5% NP-40) and proteins were eluted with 60 µl of Laemmli
24 buffer. Proteins were visualized by western blotting using the appropriate antibodies.

25

26

1 Differential FANCI protein expression by IHC analysis of HGSC tumours and normal tissues

2 Slides containing 4 micron slices of TMAs containing 0.6 mm FFPE tissue cores (spaced
3 0.2 mm apart) of HGSC (n=101)¹³⁹ and normal fallopian tube (n=15) tissues, and *FANCI*
4 c.1813C>T carrier tumour tissues (n=8) were stained using the BenchMark XT automated
5 stainer (Ventana Medical System Inc., Roche). Antigen retrieval was carried out with Cell
6 Conditioning 1 solution for one hour. The *FANCI* polyclonal antibody (Sigma HPA039972
7 dilution 1/200) was automatically dispensed and the TMAs were incubated at 37°C for one hour.
8 The Ultra View DAB detection kit was used, and the slide was counterstained with hematoxylin.
9 The TMAs were scanned with a 20x 0.75 NA objective by VS-110 Olympus.

10 Staining patterns were evaluated by two independent observers. Intensity of staining
11 was scored for all cores using a four-point system; zero referring to no detectable staining to
12 three referring to the highest staining intensity. As each sample was present in the TMA in
13 duplicate, each case received four scores (two for the first core and two for the second core).
14 The mode score was used for analysis where possible, otherwise the average score was used.
15 The interobserver correlation for IHC analysis of the TMA of HGSC samples was 89%. Staining
16 patterns and analyses from the TMA containing HGSC samples and normal fallopian tube
17 samples were evaluated without prior knowledge of carrier status for *FANCI* c.1813C>T. All
18 HGSC and normal fallopian tube samples were genotyped for *FANCI* c.1813C>T variant as
19 described, and one previously known carrier was identified (PT0004). Samples that could not be
20 scored were removed from further analysis (n=7 HGSC samples, n=2 FTE samples). A second
21 TMA that contained 10 samples from eight *FANCI* c.1813C>T carriers (in duplicate) were also
22 scored separately: the results from one sample from this TMA was removed from analysis due
23 to poor tissue quality.

24 Spearman correlation was used to measure the strength of the correlation of staining
25 intensity and survival data with clinical data as continuous variables. Survival curve was
26 calculated according to Kaplan-Meier method coupled with a log rank test. Univariable Cox

1 hazard models were used to estimate the hazard ratio as categorical data. All statistical analysis
2 was done using Statistical Package for the Social Sciences software version 24., (SPSS, Inc)
3 and results deemed statistically significance at $p < 0.05$.
4

1 **Acknowledgements**

2 We thank Yan Coulombe, Dr. Amélie Rodrigue, and Dr. Faezeh Vasheghani Farahani for
3 technical support, Dr. Lili Fu for reviewing pathology reports, Daryl A. Ronato for graphical
4 support, and the Molecular Pathology core facility of the Centre de recherche du Centre
5 hospitalier de l'Université de Montréal (CRCHUM) for performing the immunohistochemistry.
6 C.T.F. was supported by The Research Institute of the McGill University Health Centre
7 Studentship (RI-MUHC) Award and Ovarian Cancer Canada Trainee Travel (Research) Award.
8 W.M.A. is supported by a Taibah University Scholarship Award and The Ministry of Higher
9 Education, Saudi Arabia. H.F. was supported in part by the Michèle St-Pierre and Canderel
10 fellowships of the Institut du cancer de Montréal. L.G.-S. is supported by a Fonds de recherche
11 du Québec-Santé (FRQS) Fellowship Award and J.-Y.M. is a FRQS Research Chair in Genome
12 Stability. The RI-MUHC and CRCHUM receive support from the FRQS. Research was
13 supported by the following: The Canadian Institute for Health Research (CIHR) operating grants
14 [PCC-156736 to P.N.T., C.M.T.G., J.R.; PJT-156124 to P.N.T., J.R.]; Cancer Research Society
15 and Ovarian Cancer Canada partnership grant [21123 to P.N.T.; Department of Medicine,
16 McGill University Grant to P.N.T.; FRQS and Quebec Breast Cancer Foundation network grants
17 to P.N.T.; Compute Canada resource allocation project wst-164 and Genome Canada Genome
18 Technology Platform award to J.R.; CIHR foundation grant to J.-Y.M. Ovarian tumor banking
19 was supported by the Banque de tissus et de données of the Réseau de recherche sur le
20 cancer of the FRQS affiliated with the Canadian Tumor Repository Network (CTRNet). Funding
21 for BCAC and iCOGS came from: Cancer Research UK [grant numbers C1287/A16563,
22 C1287/A10118, C1287/A10710, C12292/A11174, C1281/A12014, C5047/A8384,
23 C5047/A15007, C5047/A10692, C8197/A16565], the European Union's Horizon 2020 Research
24 and Innovation Programme (grant numbers 634935 and 633784 for BRIDGES and B-CAST
25 respectively), the European Community's Seventh Framework Programme under grant
26 agreement n° 223175 [HEALTHF2-2009-223175] (COGS), the National Institutes of Health
27 [CA128978] and Post-Cancer GWAS initiative [1U19 CA148537, 1U19 CA148065-01 (DRIVE)
28 and 1U19 CA148112 - the GAME-ON initiative], the Department of Defence [W81XWH-10-1-
29 0341], and the Canadian Institutes of Health Research (CIHR) for the CIHR Team in Familial
30 Risks of Breast Cancer [grant PSR-SIIRI-701]. All studies and funders as listed in Michailidou K
31 et al (2013 and 2015) and in Guo Q et al (2015) are acknowledged for their contributions.

32 **Author contributions**

33 C.T.F. performed targeted genetic experiments, bioinformatic and statistical analyses, wrote and
34 edited initial drafts of the manuscript. L.G.-S. performed *in vitro* experiments and edited drafts of
35 the manuscript. W.M.A. aided in the bioinformatic analyses. T.R. and J.N. performed
36 bioinformatic analyses and edited draft. K.K.O. performed genetic analyses. K.B. aided in
37 experiments. S.L. A. aided in and oversaw experiments. S.B. performed targeted genotyping
38 experiments. C.S. aided in study sample and clinical data collection. L.M. and H.F. performed
39 immunohistochemistry of tissue microarray and associated statistical analyses.
40 E.F., D.N.S., Z.E., and D.P. provided study samples, clinical data, and critical input. W.D.F. and
41 A.-M.M.-M. provided study samples and clinical data, critical input, and edited draft. J.M.
42 oversaw whole exome sequencing and bioinformatic analyses of discovery family and edited
43 draft. M.T., P.A.J., and I.G.C. provided genotyping and clinical data, critical input, and edited
44 draft. C.M.T.G. oversaw bioinformatic analyses. J.R. oversaw processing of whole exome
45 sequencing data, developed data analysis pipelines, and oversaw bioinformatic analyses. J.-
46 Y.M. oversaw *in vitro* experiments. P.N.T. conceived and designed the overall project, wrote the
47 manuscript, and oversaw all aspects of the project. All authors reviewed and edited the
48 manuscript.
49
50
51

- 1 **Competing interests**
- 2 The authors declare no competing interests.
- 3

1 References

- 2 1. Siegel, R. L., Miller, K. D. & Jemal, A. Cancer statistics, 2019. *Ca. Cancer J. Clin.* **69**, 7–
3 34 (2019).
- 4 2. Lichtenstein, P. *et al.* Environmental and heritable factors in the causation of cancer:
5 Analyses of cohorts of twins from Sweden, Denmark, and Finland. *N. Engl. J. Med.* **343**,
6 78–85 (2000).
- 7 3. Lynch, J. F., Butts, M., Godwin, A. K. & Ph, D. Hereditary Ovarian Cancer: Molecular
8 Genetics, Pathology, Management, and Heterogeneity. *Mol. Oncol.* **3**, 97–137 (2009).
- 9 4. Stratton, J. F., Pharoah, P., Smith, S. K., Easton, D. & Ponder, B. a. A systematic review
10 and meta-analysis of family history and risk of ovarian cancer. *Br. J. Obstet. Gynaecol.*
11 **105**, 493–499 (1998).
- 12 5. Kuchenbaecker, K. B. *et al.* Risks of breast, ovarian, and contralateral breast cancer for
13 BRCA1 and BRCA2 mutation carriers. *JAMA* **317**, 2402–2416 (2017).
- 14 6. Peres, L. C. *et al.* Invasive epithelial ovarian cancer survival by histotype and disease
15 stage. *J. Natl. Cancer Inst.* **111**, 60–68 (2019).
- 16 7. Vang, R., Shih, L. M. & Kurman, R. J. Ovarian low-grade and high grade serous
17 carcinoma: Pathogenesis, clinicopathologic and molecular biologic features, and
18 diagnostic problems. *Adv. Anat. Pathol.* **16**, 267–282 (2009).
- 19 8. Mucci, L. A. *et al.* Familial risk and heritability of cancer among twins in nordic countries.
20 *JAMA* **315**, 68–76 (2016).
- 21 9. Finch, A. P. M. *et al.* Impact of oophorectomy on cancer incidence and mortality in
22 women with a BRCA1 or BRCA2 mutation. *J. Clin. Oncol.* **32**, 1547–1554 (2014).
- 23 10. Finch, A. *et al.* Salpingo-oophorectomy and the risk of ovarian, fallopian tube, and
24 peritoneal cancers in women with a BRCA1 or BRCA2 mutation. *JAMA* **296**, 185–192
25 (2006).
- 26 11. Fong, P. C. *et al.* Poly (ADP)-ribose polymerase inhibition: Frequent durable responses in
27 BRCA carrier ovarian cancer correlating with platinum-free interval. *J. Clin. Oncol.* **28**,
28 2512–2519 (2010).
- 29 12. Audeh, M. W. *et al.* Oral poly (ADP-ribose) polymerase inhibitor olaparib in patients with
30 BRCA1 or BRCA2 mutations and recurrent ovarian cancer: a proof-of-concept trial.
31 *Lancet Oncol.* **376**, 245–251 (2010).
- 32 13. Gelmon, K. A. *et al.* Olaparib in patients with recurrent high-grade serous or poorly
33 differentiated ovarian carcinoma or triple-negative breast cancer: a phase 2 , multicentre ,
34 open-label , non-randomised study. *Lancet Oncol.* **12**, 852–861 (2011).
- 35 14. Kaufman, B. *et al.* Olaparib monotherapy in patients with advanced cancer and a
36 germline BRCA1/2 mutation. *J. Clin. Oncol.* **33**, 244–250 (2015).
- 37 15. Pujade-lauraine, E. *et al.* Olaparib tablets as maintenance therapy in patients with
38 platinum-sensitive, relapsed ovarian cancer and a BRCA1/2 randomised, placebo-
39 controlled, phase 3 trial. *Lancet Oncol.* **18**, 1274–1284 (2017).
- 40 16. Ledermann, J. *et al.* Olaparib maintenance therapy in patients with platinum-sensitive
41 relapsed serous ovarian cancer: a preplanned retrospective analysis of outcomes by
42 BRCA status in a randomised phase 2 trial. *Lancet Oncol.* **15**, 852–861 (2014).
- 43 17. Kanchi, K. L. *et al.* Integrated analysis of germline and somatic variants in ovarian cancer.
44 *Nat. Commun.* **5**, 3156 (2014).
- 45 18. Song, H. *et al.* Tagging single nucleotide polymorphisms in the BRIP1 gene and
46 susceptibility to breast and ovarian cancer. *PLoS One* **2**, e268 (2007).
- 47 19. Rafnar, T. *et al.* Mutations in BRIP1 confer high risk of ovarian cancer. *Nat. Genet.* **43**,
48 1104–1107 (2011).
- 49 20. Meindl, A. *et al.* Germline mutations in breast and ovarian cancer pedigrees establish
50 RAD51C as a human cancer susceptibility gene. *Nat. Genet.* **42**, 410–414 (2010).

- 1 21. Zheng, Y. *et al.* Screening RAD51C nucleotide alterations in patients with a family history
2 of breast and ovarian cancer. *Breast Cancer Res. Treat.* **124**, 857–861 (2010).
- 3 22. Bagley, C. M., Young, R. C., Canellos, G. P. & DeVita, V. T. Treatment of ovarian
4 carcinoma: Possibilities for progress. *N. Engl. J. Med.* **287**, 856–862 (1972).
- 5 23. Somyajit, K., Subramanya, S. & Nagaraju, G. RAD51C: A novel cancer susceptibility
6 gene is linked to Fanconi anemia and breast cancer. *Carcinogenesis* **31**, 2031–2038
7 (2010).
- 8 24. Loveday, C. *et al.* Germline mutations in RAD51D confer susceptibility to ovarian cancer.
9 *Nat. Genet.* **43**, 879–882 (2011).
- 10 25. Yang, X. *et al.* Ovarian and breast cancer risks associated with pathogenic variants in
11 RAD51C and RAD51D. *J. Natl. Cancer Inst.* **djaa030**, <https://doi.org/10.1093/jnci/djaa030>
12 (2020).
- 13 26. Sriver, C. R. Human genetics: Lessons from Quebec populations. *Annu. Rev. Genomics*
14 *Hum. Genet.* **2**, 69–101 (2001).
- 15 27. Laberge, A.-M. *et al.* Population history and its impact on medical genetics in Quebec.
16 *Clin Genet* **68**, 287–301 (2005).
- 17 28. Roy-Gagnon, M.-H. *et al.* Genomic and genealogical investigation of the French
18 Canadian founder population structure. *Hum. Genet.* **129**, 521–531 (2011).
- 19 29. Bherer, C. *et al.* Admixed ancestry and stratification of Quebec regional populations. *Am.*
20 *J. Phys. Anthropol.* **144**, 432–441 (2011).
- 21 30. Oros, K. K. *et al.* Significant proportion of breast and/or ovarian cancer families of French
22 Canadian descent harbor 1 of 5 BRCA1 and BRCA2 mutations. *Int. J. Cancer* **112**, 411–
23 419 (2004).
- 24 31. Cline, M. S. *et al.* BRCA Challenge : BRCA Exchange as a global resource for variants in
25 BRCA1 and BRCA2. *PLoS Genet.* **14**, e1007752 (2018).
- 26 32. Tischkowitz, M. *et al.* Contribution of the PALB2 c.2323C>T [p. Q775X] Founder mutation
27 in well-defined breast and/or ovarian cancer families and unselected ovarian cancer
28 cases of French Canadian descent. *BMC Med. Genet.* **14**, 5 (2013).
- 29 33. Rivera, B. *et al.* Functionally null RAD51D missense mutation associates strongly with
30 ovarian carcinoma. *Cancer Res.* **77**, 4517–4529 (2017).
- 31 34. Sims, A. E. *et al.* FANCI is a second monoubiquitinated member of the Fanconi anemia
32 pathway. *Nat. Struct. Mol. Biol.* **14**, 564–567 (2007).
- 33 35. Smogorzewska, A. *et al.* Identification of the Fanconi anemia (FANC) I protein, a
34 monoubiquitinated FANCD2 paralog required for crosslink repair. *Cell* **129**, 289–301
35 (2007).
- 36 36. Dorsman, J. C. *et al.* Identification of the Fanconi anemia complementation group I gene,
37 FANCI. *Cell. Oncol.* **29**, 211–218 (2007).
- 38 37. Ishiai, M. *et al.* FANCI phosphorylation functions as a molecular switch to turn on the
39 Fanconi anemia pathway. *Nat. Struct. Mol. Biol.* **15**, 1138–1146 (2008).
- 40 38. Nakanishi, K. *et al.* Human Fanconi anemia monoubiquitination pathway promotes
41 homologous DNA repair. *PNAS* **102**, 1110–1115 (2005).
- 42 39. Tonin, P. N., Maugard, C. M., Perret, C., Mes-Masson, A. M. & Provencher, D. M. A
43 review of histopathological subtypes of ovarian cancer in BRCA-related French Canadian
44 cancer families. *Fam. Cancer* **6**, 491–497 (2007).
- 45 40. Evans, D. G. R. *et al.* A new scoring system for the chances of identifying a BRCA1/2
46 mutation outperforms existing models including BRCAPRO. *J Med Genet* **41**, 474–480
47 (2004).
- 48 41. Evans, D. G. *et al.* Pathology update to the Manchester Scoring System based on testing
49 in over 4000 families. *J Med Genet* **54**, 674–681 (2017).
- 50 42. Oros, K. K. *et al.* Application of BRCA1 and BRCA2 mutation carrier prediction models in
51 breast and/or ovarian cancer families of French Canadian descent. *Clin. Genet.* **70**, 320–

- 1 329 (2006).
- 2 43. Davydov, E. V, Goode, D. L., Sirota, M., Cooper, G. M. & Sidow, A. Identifying a high
- 3 fraction of the human genome to be under selective constraint using GERP ++. *PLoS*
- 4 *Comput. Biol.* **6**, e1001025 (2010).
- 5 44. Adzhubei, I. A. *et al.* A method and server for predicting damaging missense mutations.
- 6 *Nat. Methods* **7**, 248–249 (2010).
- 7 45. 1000 Genomes Project Consortium *et al.* A global reference for human genetic variation.
- 8 *Nature* **526**, 68–74 (2015).
- 9 46. Belanger, M. H. *et al.* A targeted analysis identifies a high frequency of BRCA1 and
- 10 BRCA2 mutation carriers in women with ovarian cancer from a founder population. *J.*
- 11 *Ovarian Res.* **8**, 1 (2015).
- 12 47. Oros, K. K. *et al.* Haplotype analysis suggest common founder in carriers of recurrent
- 13 BRCA2 mutation , 3398delAAAAG, in French Canadian hereditary breast and/ovarian
- 14 cancer families. *BMC Med. Genet.* **7**, 23 (2006).
- 15 48. Tonin, P. N. *et al.* Founder BRCA1 and BRCA2 mutations in French Canadian breast and
- 16 ovarian cancer families. *Am. J. Hum. Genet.* **63**, 1341–1351 (1998).
- 17 49. Tonin, P. N., Mes-Masson, A. M., Narod, S. A., Ghadirian, P. & Provencher, D. Founder
- 18 BRCA1 and BRCA2 mutations in French Canadian ovarian cancer cases unselected for
- 19 family history. *Clin Genet* **55**, 318–324 (1999).
- 20 50. Tonin, P. N. *et al.* Founder BRCA1 and BRCA2 mutations in early-onset french Canadian
- 21 breast cancer cases unselected for family history. *Int. J. Cancer* **95**, 189–193 (2001).
- 22 51. Arcand, S. L. *et al.* Germline TP53 mutational spectrum in French Canadians with breast
- 23 cancer. *BMC Med. Genet.* **16**, 24 (2015).
- 24 52. Novak, D. J. *et al.* Identification of a novel CHEK2 variant and assessment of its
- 25 contribution to the risk of breast cancer in French Canadian women. *BMC Cancer* **8**, 239
- 26 (2008).
- 27 53. Tischkowitz, M. *et al.* Analysis of PALB2/FANCN-associated breast cancer families.
- 28 *PNAS* **104**, 6788–6793 (2007).
- 29 54. Cote, S. *et al.* The BRCA2 c .9004G>A (E2003K) variant is likely pathogenic and recurs
- 30 in breast and/or ovarian cancer families of French Canadian descent. *Breast Cancer Res.*
- 31 *Treat.* **131**, 333–340 (2012).
- 32 55. Osher, D. J. *et al.* Mutation analysis of RAD51D in non- BRCA1/2 ovarian and breast
- 33 cancer families. *Br. J. Cancer* **106**, 1460–1463 (2012).
- 34 56. Arcand, S. L. *et al.* Germline TP53 mutations in BRCA1 and BRCA2 mutation-negative
- 35 French Canadian breast cancer families. *Breast Cancer Res. Treat.* **108**, 399–408
- 36 (2008).
- 37 57. Cavallone, L. *et al.* Haplotype analysis of TP53 polymorphisms, Arg72Pro and Ins16, in
- 38 BRCA1 and BRCA2 mutation carriers of French Canadian descent. *BMC Cancer* **8**, 96
- 39 (2008).
- 40 58. Cavallone, L. *et al.* Comprehensive BRCA1 and BRCA2 mutation analyses and review of
- 41 French Canadian families with at least three cases of breast cancer. *Fam. Cancer* **9**,
- 42 507–517 (2010).
- 43 59. Godard, B. *et al.* Risk factors for familial and sporadic ovarian cancer among French
- 44 Canadians: A case-control study. *Am. J. Obstet. Gynecol.* **179**, 403–410 (1998).
- 45 60. Awadalla, P. *et al.* Cohort profile of the CARTaGENE study : Quebec’s population-based
- 46 biobank for public health and personalized genomics. *Int. J. Epidemiol.* **42**, 1285–1299
- 47 (2013).
- 48 61. Lek, M. *et al.* Analysis of protein-coding genetic variation in 60,706 humans. *Nature* **536**,
- 49 285–291 (2016).
- 50 62. Matulonis, U. A. *et al.* Ovarian cancer. *Nat. Rev. Dis. Prim.* **2**, 16061 (2016).
- 51 63. Reid, B. M., Permuth, J. B. & Sellers, T. A. Epidemiology of ovarian cancer: A summary

- 1 review. *Cancer Biol Med* **14**, 9–32 (2017).
- 2 64. Rice, M. S., Hankinson, S. E. & Tworoger, S. S. Tubal ligation, hysterectomy, unilateral
- 3 oophorectomy, and risk of ovarian cancer in the Nurses' Health Studies. *Fertil Steril* **102**,
- 4 192–198 (2014).
- 5 65. Rebbeck, T. R. *et al.* Prophylactic oophorectomy in carriers of BRCA1 or BRCA2
- 6 mutations. *N. Engl. J. Med.* **346**, 1616–1622 (2002).
- 7 66. Joly, D. J., Lilienfeld, A. M., Diamond, E. L. & Bross, I. D. J. An epidemiologic study of the
- 8 relationship of reproductive experience to cancer of the ovary. *Am. J. Epidemiol.* **99**, 190–
- 9 209 (1974).
- 10 67. Casagrande, J. T. *et al.* "Incessant ovulation" and ovarian cancer. *Lancet* **314**, 170–173
- 11 (1979).
- 12 68. Nasca, P. C., Greenwald, P., Chorost, S., Richart, R. & Caputo, T. An epidemiologic
- 13 case-control study of ovarian cancer and reproductive factors. *Am. J. Epidemiol.* **119**,
- 14 705–713 (1984).
- 15 69. The Cancer and Steroid Hormone Study of the Centers for Disease Control and the
- 16 National Institute of Child Health and Human Development. The reduction in risk of
- 17 ovarian cancer associated with oral-contraceptive use. *N. Engl. J. Med.* **316**, 650–655
- 18 (1987).
- 19 70. Moorman, P. G. *et al.* Oral contraceptives and risk of ovarian cancer and breast cancer
- 20 among high-risk women: A systematic review and meta-analysis. *J. Clin. Oncol.* **31**,
- 21 4188–4198 (2013).
- 22 71. Rosenberg, L. *et al.* A case-control study of oral contraceptive use and invasive epithelial
- 23 ovarian cancer. *Am. J. Epidemiol.* **139**, 654–661 (1994).
- 24 72. Mori, M. *et al.* Reproductive, genetic, and dietary risk factors for ovarian cancer. *Am. J.*
- 25 *Epidemiol.* **128**, 771–777 (1988).
- 26 73. Hankinson, S. E. *et al.* Tubal ligation, hysterectomy, and risk of ovarian cancer. *JAMA*
- 27 **270**, 2813–2818 (1993).
- 28 74. Subramanian, D. N. *et al.* Exome sequencing of familial high-grade serous ovarian
- 29 carcinoma reveals heterogeneity for rare candidate susceptibility genes. *Nat. Commun.*
- 30 **11**, <https://doi.org/10.1038/s41467-020-15461-z> (2020).
- 31 75. Phelan, C. M. *et al.* Identification of 12 new susceptibility loci for different histotypes of
- 32 epithelial ovarian cancer. *Nat. Genet.* **49**, 680–691 (2017).
- 33 76. Michailidou, K. *et al.* Large-scale genotyping identified 41 new loci associated with breast
- 34 cancer risk. *Nat. Genet.* **45**, 353–361 (2013).
- 35 77. Michailidou, K. *et al.* Genome-wide association analysis of more than 120,000 individuals
- 36 identifies 15 new susceptibility loci for breast cancer. *Nat. Genet.* **47**, 373–380 (2015).
- 37 78. Lakhani, S. R. *et al.* Pathology of ovarian cancers in BRCA1 and BRCA2 carriers. *Clin.*
- 38 *Cancer Res.* **10**, 2473–2481 (2004).
- 39 79. Evans, D. *et al.* Probability of BRCA1/2 mutation varies with ovarian histology: results
- 40 from screening 442 ovarian cancer families. *Clin. Genet.* **73**, 338–345 (2008).
- 41 80. Bolton, K. L. *et al.* Association between BRCA1 and BRCA2 mutations and survival in
- 42 women with invasive epithelial ovarian cancer. *JAMA* **307**, 382–390 (2012).
- 43 81. Liu, J. *et al.* Clinical characteristics and outcomes of BRCA-associated ovarian cancer:
- 44 genotype and survival. *Cancer Genet.* **205**, 34–41 (2012).
- 45 82. PDQ Cancer Genetics Editorial Board. *Genetics of breast and gynecologic cancers*
- 46 *(PDQ®): health professional version. PDQ Cancer Information Summaries* (National
- 47 Cancer Institute (US)).
- 48 83. Kindelberger, D. W. *et al.* Intraepithelial carcinoma of the fimbria and pelvic serous
- 49 carcinoma : Evidence for a causal relationship. *Am. J. Surg. Pathol.* **31**, 161–169 (2007).
- 50 84. Callahan, M. J. *et al.* Primary fallopian tube malignancies in BRCA-positive women
- 51 undergoing surgery for ovarian cancer risk reduction. *J. Clin. Oncol.* **25**, 3985–3990

- 1 (2007).
- 2 85. Carlson, J. W. *et al.* Serous tubal intraepithelial carcinoma: Its potential role in primary
3 peritoneal serous carcinoma and serous cancer prevention. *J. Clin. Oncol.* **26**, 4160–
4 4165 (2008).
- 5 86. Finch, A. *et al.* Clinical and pathologic findings of prophylactic salpingo-oophorectomies in
6 159 BRCA1 and BRCA2 carriers. *Gynecol. Oncol.* **100**, 58–64 (2006).
- 7 87. Labidi-galy, S. I. *et al.* High grade serous ovarian carcinomas originate in the fallopian
8 tube. *Nat. Commun.* **8**, (2017).
- 9 88. Leeper, K. *et al.* Pathologic findings in prophylactic oophorectomy specimens in high-risk
10 women. *Gynecol. Oncol.* **87**, 52–56 (2002).
- 11 89. Powell, C. B. *et al.* Risk-reducing salpingo-oophorectomy in BRCA mutation carriers: role
12 of seial sectioning in the setection of occult malignancy. *J. Clin. Oncol.* **23**, 127–132
13 (2005).
- 14 90. Foulkes, W. D. *et al.* Identification of a novel truncating PALB2 mutation and analysis of
15 its contribution to early-onset breast cancer in French-Canadian women. *Breast Cancer*
16 *Res.* **9**, R83 (2007).
- 17 91. Castellsagué, E. *et al.* Characterization of a novel founder MSH6 mutation causing Lynch
18 syndrome in the French Canadian population. *Clin. Genet.* **87**, 536–542 (2015).
- 19 92. Vezina, H. *et al.* Molecular and genealogical characterization of the R1443X BRCA1
20 mutation in high-risk French-Canadian breast/ovarian cancer families. *Hum. Genet.* **117**,
21 119–132 (2005).
- 22 93. Manning, A. P. *et al.* Haplotype analysis of BRCA2 8765delAG mutation carriers in
23 French Canadian Yemenite Jewish hereditary breast cancer families. *Hum. Hered.* **52**,
24 116–120 (2001).
- 25 94. Wojnarowicz, P. M. *et al.* The Genomic Landscape of TP53 and p53 Annotated High
26 Grade Ovarian Serous Carcinomas from a Defined Founder Population Associated with
27 Patient Outcome. *PLoS One* **7**, e45484 (2012).
- 28 95. The Cancer Genome Atlas Network. Integrated genomic analyses of ovarian carcinoma.
29 *Nature* **474**, 609–615 (2011).
- 30 96. Maxwell, K. N. *et al.* BRCA locus-specific loss of heterozygosity in germline BRCA1 and
31 BRCA2 carriers. *Nat. Commun.* **8**, 319 (2017).
- 32 97. Vahteristo, P. *et al.* A CHEK2 genetic variant contributing to a substantial fraction of
33 familial breast cancer. *Am. J. Hum. Genet.* **71**, 432–438 (2002).
- 34 98. Weber-Lassalle, N. *et al.* BRIP1 loss-of-function mutations confer high risk for familial
35 ovarian cancer, but not familial breast cancer. *Breast Cancer Res.* **20**, 7 (2018).
- 36 99. Lin, P.-H. *et al.* Multiple gene sequencing for risk assessment in patients with early-onset
37 or familial breast cancer. *Oncotarget* **7**, 8310–8320 (2016).
- 38 100. Girard, E. *et al.* Familial breast cancer and DNA repair genes: insights into known and
39 novel susceptibility genes from the GENESIS study, and implications for multigene panel
40 testing. *Int. J. Cancer* **144**, 1962–1974 (2018).
- 41 101. Garcia, M. J. *et al.* Mutational analysis of FANCL, FANCM and the recently identified
42 FANCI suggests that among the 13 known Fanconi anemia genes, only FANCD1/BRCA2
43 plays a major role in high-risk breast cancer predisposition. *Carcinogenesis* **30**, 1898–
44 1902 (2009).
- 45 102. Ellingson, M. S. *et al.* Exome sequencing reveals frequent deleterious germline variants
46 in cancer susceptibility genes in women with invasive breast cancer undergoing
47 neoadjuvant chemotherapy. *Breast Cancer Res. Treat.* **153**, 435–443 (2015).
- 48 103. Yang, X. *et al.* Identification of a comprehensive spectrum of genetic factors for hereditary
49 breast cancer in a Chinese population by next- generation sequencing. *PLoS One* **10**,
50 e0125571 (2015).
- 51 104. Mantere, T. *et al.* Finnish Fanconi anemia mutations and hereditary predisposition to

- 1 breast and prostate cancer. *Clin Genet* **88**, 68–73 (2015).
- 2 105. Bonache, S. *et al.* Multigene panel testing beyond BRCA1/2 in breast/ovarian cancer
3 Spanish families and clinical actionability of findings. *J. Cancer Res. Clin. Oncol.* **144**,
4 2495–2513 (2018).
- 5 106. Tedaldi, G. *et al.* Multiple-gene panel analysis in a case series of 255 women with
6 hereditary breast and ovarian cancer. *Oncotarget* **8**, 47064–47075 (2017).
- 7 107. Paulo, P. *et al.* Targeted next generation sequencing identifies functionally deleterious
8 germline mutations in novel genes in early-onset/familial prostate cancer. *PLoS Genet.*
9 **14**, e1007355 (2018).
- 10 108. Velho, P. I. *et al.* Efficacy of radium-223 in bone-metastatic castration-resistant prostate
11 cancer with and without homologous repair gene defects. *Eur. Urol.* **76**, 170–176 (2018).
- 12 109. Chan, S. H. *et al.* Germline mutations in cancer predisposition genes are frequent in
13 sporadic sarcomas. *Sci. Rep.* **7**, 10660 (2017).
- 14 110. Betti, M. *et al.* Germline mutations in DNA repair genes predispose asbestos-exposed
15 patients to malignant pleural mesothelioma. *Cancer Lett.* **405**, 38–45 (2017).
- 16 111. Maung, K. Z. Y. *et al.* Rare variants in Fanconi anemia genes are enriched in acute
17 myeloid leukemia. *Blood Cancer J.* **8**, <https://doi.org/10.1038/s41408-018-0090-7> (2018).
- 18 112. Chandrasekharappa, S. C. *et al.* Assessing the spectrum of germline variation in Fanconi
19 anemia genes among patients with head and neck carcinoma before age 50. *Cancer*
20 **123**, 3943–3954 (2017).
- 21 113. Zhunussova, G. *et al.* Mutation spectrum of cancer-associated genes in patients with
22 early onset of colorectal cancer. *Front. Oncol.* **9**, <https://doi.org/10.3389/fonc.2019.00673>
23 (2019).
- 24 114. Castella, M. *et al.* FANCI regulates recruitment of the FA core complex at sites of DNA
25 damage independently of FANCD2. *PLoS Genet.* **11**, e1005563 (2015).
- 26 115. Niraj, J., Farkkila, A. & D’Andrea, A. D. The Fanconi anemia pathway in cancer. *Annu*
27 *Rev Cancer Biol* **3**, 457–478 (2019).
- 28 116. Farmer, H. *et al.* Targeting the DNA repair defect in BRCA mutant cells as a therapeutic
29 strategy. *Nature* **434**, 917–921 (2005).
- 30 117. Wiltshire, T. *et al.* Functional characterization of 84 PALB2 variants of uncertain
31 significance. *Genet. Med.* **22**, 622–632 (2019).
- 32 118. Rodrigue, A. *et al.* A global functional analysis of missense mutations reveals two major
33 hotspots in the PALB2 tumor suppressor. *Nucleic Acids Res.* **47**, 10662–10677 (2019).
- 34 119. Kim, Y. *et al.* Regulation of multiple DNA repair pathways by the Fanconi anemia protein
35 SLX4. *Blood* **121**, 54–64 (2013).
- 36 120. Chatterjee, N., Lin, Y. & Wilson, J. H. Fanconi anemia pathway regulates convergent
37 transcription-induced cell death at trinucleotide repeats in human cells. *Postdoc J.* **4**, 46–
38 54 (2016).
- 39 121. Chen, Y. *et al.* ATR-mediated phosphorylation of FANCI regulates dormant origin firing in
40 response to replication stress. *Mol. Cell* **58**, 323–338 (2016).
- 41 122. Sato, K. *et al.* FANCI-FANCD2 stabilizes the RAD51-DNA complex by binding RAD51
42 and protects the 5’-DNA end. *Nucleic Acids Res.* **44**, 10758–10771 (2016).
- 43 123. Zhang, X., Lu, X., Akhter, S., Georgescu, M. & Legerski, R. J. FANCI is a negative
44 regulator of Akt activation. *Cell Cycle* **15**, 1134–1143 (2016).
- 45 124. Sondalle, S. B., Longerich, S., Ogawa, L. M., Sung, P. & Baserga, S. J. Fanconi anemia
46 protein FANCI functions in ribosome biogenesis. *PNAS* **116**, 2561–2570 (2019).
- 47 125. Mehta, P. A. & Tolar, J. Fanconi Anemia. in *GeneReviews*(®) [Internet] (eds. Pagon, R.,
48 Adam, M. & Ardinger, H.) (Seattle (WA): University of Washington, Seattle, 2002).
- 49 126. Dubois, E. L. *et al.* A Fanci knockout mouse model reveals common and distinct functions
50 for FANCI and FANCD2. *Nucleic Acids Res.* **47**, 7532–7547 (2019).
- 51 127. Yang, H. & Wang, K. Genomic variant annotation and prioritization with ANNOVAR and

- 1 wANNOVAR. *Nat. Protoc.* **10**, 1556–1566 (2015).
- 2 128. Sim, N. *et al.* SIFT web server: predicting effects of amino acid substitutions on proteins.
- 3 *Nucleic Acids Res.* **40**, 452–457 (2012).
- 4 129. Robinson, J. T. *et al.* Integrative Genomics Viewer. *Nat. Biotechnol.* **29**, 24–26 (2011).
- 5 130. Knijnenburg, T. A. *et al.* Genomic and molecular landscape of DNA damage repair
- 6 deficiency across The Cancer Genome Atlas resource. *Cell Rep.* **23**, 239–254 (2018).
- 7 131. Behl, S. *et al.* Founder BRCA1/BRCA2/PALB2 pathogenic variants in French-Canadian
- 8 breast cancer cases and controls. *Sci. Rep.* **10**, [https://doi.org/10.1038/s41598-020-](https://doi.org/10.1038/s41598-020-63100-w)
- 9 [63100-w](https://doi.org/10.1038/s41598-020-63100-w) (2020).
- 10 132. Fedick, A. *et al.* High-throughput carrier screening using TaqMan allelic discrimination.
- 11 *PLoS One* **8**, e59722 (2013).
- 12 133. Mccarthy, S. *et al.* A reference panel of 64,976 haplotypes for genotype imputation. *Nat.*
- 13 *Genet.* **48**, 1279–1283 (2016).
- 14 134. Loh, P. *et al.* Reference-based phasing using the Haplotype Reference Consortium
- 15 panel. *Nat. Genet.* **48**, 1443–1448 (2016).
- 16 135. Durbin, R. Efficient haplotype matching and storage using the positional Burrows-
- 17 Wheeler transform (PBWT). *Bioinformatics* **30**, 1266–1272 (2014).
- 18 136. McLaren, W. *et al.* The Ensembl Variant Effect Predictor. *Genome Biol.* **17**,
- 19 <http://dx.doi.org/10.1186/s13059-016-0974-4> (2016).
- 20 137. Rowley, S. M. *et al.* Population-based genetic testing of asymptomatic women for breast
- 21 and ovarian cancer susceptibility. *Genet. Med.* **21**, 913–922 (2018).
- 22 138. Berry, B. D. A. *et al.* BRCAPRO validation, sensitivity of genetic testing of
- 23 BRCA1/BRCA2, and prevalence of other breast cancer susceptibility genes. *J. Clin.*
- 24 *Oncol.* **20**, 2701–2712 (2002).
- 25 139. Medrano, M. *et al.* Interrogation of functional cell-surface markers identifies CD151
- 26 dependency in high-grade serous ovarian cancer. *Cell Rep.* **18**, 2343–2358 (2017).
- 27

1 **Table 1.** Comparison of *FANCI* c.1813C>T carrier frequencies in cancer cases to cancer-free women of FC descent.

Study group ¹	<i>BRCA1</i> and <i>BRCA2</i> mutation status ¹	Case tested	Number of subjects	Number of c.1813C>T carriers (%)	OR	95% CI	P
OC families ²	All	OC	43	3 (7.0)	2.91	0.88-9.64	0.08
	Negative		23	2 (8.7)	3.7	0.85-16.1	0.08
	<i>BRCA1</i> positive		14	1 (7.1)	2.99	0.39-23.2	0.29
	<i>BRCA2</i> positive		6	0	NA	NA	NA
Sporadic OC cases	All	OC	439	7 (1.6)	0.63	0.29-1.38	0.25
	Negative		400	7 (1.8)	0.69	0.32-1.51	0.36
	<i>BRCA1</i> positive		18	0	NA	NA	NA
	<i>BRCA2</i> positive		21	0	NA	NA	NA
HGSC cases	All	OC	341	7 (2.1)	0.81	0.37-1.78	0.61
	Negative		310	7 (2.3)	0.9	0.41-1.97	0.79
	<i>BRCA1</i> positive		15	0	NA	NA	NA
	<i>BRCA2</i> positive		16	0	NA	NA	NA
HBOC ²	All	BC	82	3 (3.7)	1.48	0.46-4.78	0.52
	Negative		34	2 (5.9)	2.43	0.57-10.3	0.23
	<i>BRCA1</i> positive		29	0	NA	NA	NA
	<i>BRCA2</i> positive		21	1 (4.8)	1.94	0.26-14.7	0.52
HBC	All	BC	158	3 (1.9)	0.75	0.23-2.41	0.63
	Negative		93	2 (2.2)	0.85	0.21-3.53	0.83
	<i>BRCA1</i> positive		20	1 (5)	2.05	0.27-15.5	0.49
	<i>BRCA2</i> positive		45	0	NA	NA	NA
Sporadic BC cases	All	BC	558	8 (1.4)	0.57	0.27-1.18	0.13
	Negative		538	8 (1.5)	0.59	0.28-1.22	0.16
	<i>BRCA1</i> positive		4	0	NA	NA	NA
	<i>BRCA2</i> positive		17	0	NA	NA	NA
Healthy women	NA	Na	2950	74 (2.5)	NA	NA	NA

2 ¹See Supplementary Table 1 for description of study groups

3 ²Overlap of some families but not *FANCI* c.1813C>T carriers

4 NA – not available

1 **Table 2.** Carrier frequencies of potentially pathogenic variants in *FANCI* from AUS HGSC cases and controls.

Study group ¹	Number of subjects (%)	Number of variant carriers ³ (%)								Total (%)
		c.13A>G p.I5V	c.286G>A p.E96K	c.1264G>A p.G422R	c.1412C>G p.P471R	c.1813C>T p.L605F ⁴	c.2366C>T p.A789V ⁴	c.3635T>C p.F1212S	c.3812C>T p.S1271F	
HGSC	516 (100)	1 (0.2)	1 (0.2)	2 (0.4)	1 (0.2)	10 (1.9)	1 (0.2)	1 (0.2)	1 (0.2)	17 (3.3)
Controls	4878 (100)	0	5 (0.1)	7 (0.1)	0	95 (1.9)	0	0	1 (0.02)	108 (2.2)
Family history of HGSC cases ²		0	0	0	0	0	0	0	0	0
≥2 OC cases (no BC)	7 (1)	0	0	0	0	0	0	0	0	0
1 OC case (no BC)	49 (10)	0	0	0	0	0	0	0	0	0
≥2 BC cases (no OC)	45 (9)	0	0	0	0	0	0	0	0	0
1 BC case (no OC)	125 (24)	0	1 (0.8)	0	0	1 (0.8)	0	0	0	2 (1.6)
≥2 OC case and BC cases	42 (8)	0	0	1 (2.4)	1 (2.4)	5 (12)	1 (2.4)	0	0	7 (17)
1 OC case (no BC)	248 (48)	1 (0.4)	0	1 (0.4)	0	4 (1.6)	0	1 (0.4)	1 (0.4)	8 (3.2)

2 ¹See Supplementary Table 1 for description of study groups

3 ²First-, second-, or third-degree relation for OC; first- and second-degree relation only for BC

4 ³See Supplementary Table 6 for more information on variants

5 ⁴Variants carried by the same case (see Supplementary Table 7)

6

1 **Table 3.** Comparison of potentially pathogenic *FANCI* variant carrier frequencies in AUS HGSC cases to controls.

Coding DNA reference sequence¹	Amino acid change	dbSNP designation	OR	95% CI	P
c.13A>G	p.I5V	rs200186938	NA	NA	NA
c.286G>A	p.E96K	rs149243307	1.89	0.22-16.2	0.56
c.1264G>A	p.G422R	rs146040966	2.71	0.56-13.1	0.21
c.1412C>G	p.P471R	rs139072231	NA	NA	NA
c.1813C>T	p.L605F	rs117125761	1.0	0.52-1.92	0.99
c.2366C>T	p.A789V	rs925359228	NA	NA	NA
c.3635T>C	p.F1212S	rs775483853	NA	NA	NA
c.3812C>T	P.S1271F	rs202066338	9.47	0.59-151.6	0.11

2 ¹ Human GRCh37/hg19

3 NA – no data on this variant available from AUS controls

4

1 **Figure 1.**
2 Study design for investigation of *FANCI* variants. A) Pedigree of a rare four-case FC OC family
3 F1528 where *FANCI* c.1813C>T; p.L605F was discovered (top). Cancer type (ovarian [Ov],
4 fallopian tube [Ft], lung [Lg], and ear, nose, and throat [ENT]) and age of diagnosis are shown.
5 The affected OC cases in generation III are *BRCA1* and *BRCA2* mutation-negative. WES was
6 performed on PBL DNA from sisters (Ov 52 and Ft/Ov 57) from F1528 (middle). Protein location
7 of p.L605F on FANCI (previously *KIAA1794*; bottom). B) Functional analyses of FANCI isoforms
8 using HeLa cells. C-E) Investigation of carrier frequency of c.1813C>T in FC OC and BC cases
9 (c) and cancer-free controls from CARTaGENE (d), and *FANCI* variants in non-FC OC/BC
10 cases and controls.

11 Solenoid domain=antiparallel pairs of α -helices that form α - α superhelix segments; Helical
12 domain= α -helices; Ubiquitination site, K523=site of monoubiquitination by the FA core complex
13 to allow downstream FA pathway function^{48,49}; S/TQ cluster=location of conserved
14 phosphorylation sites⁵¹

15
16 **Figure 2.**
17 p.L605F variant impairs FANCI stability and functions. A) HeLa *FANCI*^{-/-} cells, clone 1, were
18 complemented with indicated constructs of Flag-FANCI variants or empty vector (EV) and
19 treated with 50 ng/ml MMC for 18 hours. Ubiquitination of FANCI and FANCD2 (upper band, H)
20 after treatment was assessed by western blot. L=lower band, corresponds to non-ubiquitinated
21 FANCI or FANCD2. B) HeLa *FANCI*^{+/+} cells were transfected with siRNA targeting FANCI and
22 then complemented with Flag-FANCI siRNA resistant constructs or EV. Cells were treated with
23 50 ng/ml MMC for 18 hours followed by FLAG immunoprecipitation. Immunoprecipitated
24 FANCD2 was analyzed by western blot. The ratio between the upper band (H) and lower band
25 (L) was calculated. C) HeLa *FANCI*^{-/-} cells, clone 1, were complemented with indicated
26 constructs of Flag-FANCI variants or EV and 0.1 μ g of empty GFP vector. After treatment with
27 MMC (50 ng/ml, 18 hours), FANCD2 foci were counted in GFP positive cells. Mean with SEM
28 are shown, and Kruskal-Wallis test was performed. P-values are shown. D-F) HeLa *FANCI*^{-/-}
29 cells, clone 1, were complemented with indicated constructs and treated with CHX and either
30 mock-treated (d) or treated with damaging agents (e, f) for indicated times. At each time point,
31 whole cell extracts were analyzed by western blot to assess protein levels. G. HeLa *FANCI*^{-/-}
32 cells, clone 1, were transfected with EV or indicated Flag-FANCI constructs. Cell viability was
33 monitored following cisplatin or Olaparib treatments for 72 hours. Cell viability was assessed by
34 counting remaining nuclei. Expression of Flag-FANCI constructs in HeLa *FANCI*^{-/-}
35 complemented cells was monitored by western blotting.

36
37 **Figure 3.**
38 Pedigree of a *BRCA1* and *BRCA2* mutation-negative two-case FC OC family F1620 where
39 *FANCI* c.1813C>T; p.L605F was identified by WES. Cancer type (ovarian [Ov] and leukemia
40 [Leu]), risk reducing surgery (total abdominal hysterectomy/bilateral salpingo-oophorectomy
41 [TAH/BSO]), and age of diagnosis are shown.

42
43 **Figure 4.**
44 The location of potentially pathogenic variants in *FANCI* from different study groups. Rare
45 (VAF<1%), potentially pathogenic *FANCI* variants in FC (a), AUS (b), CDN (c) OC and/or BC
46 cases, and AUS controls (d). Refer to supplementary table 1 for cohort descriptions.

47
48 **Figure 5.**
49 FANCI protein expression in HGSC by IHC of TMA analyses. A) An example of IHC analysis of
50 FANCI protein of a paraffin embedded normal fallopian tube tissue core. B) Examples of
51 different patterns of intensity of IHC analysis of FANCI protein of HGSC tissue cores (epithelial

- 1 cell components scored). C) Kaplan-Meier survival curve of HGSC cases for disease-free
- 2 survival (in months) in epithelial cell component. Cases included in the analyses had received
- 3 only adjuvant taxol and carboplatin chemotherapy. Survival curve was calculated according to
- 4 Kaplan-Meier method coupled with a log rank test. E=epithelial component; S=stromal
- 5 component

Figure 1.

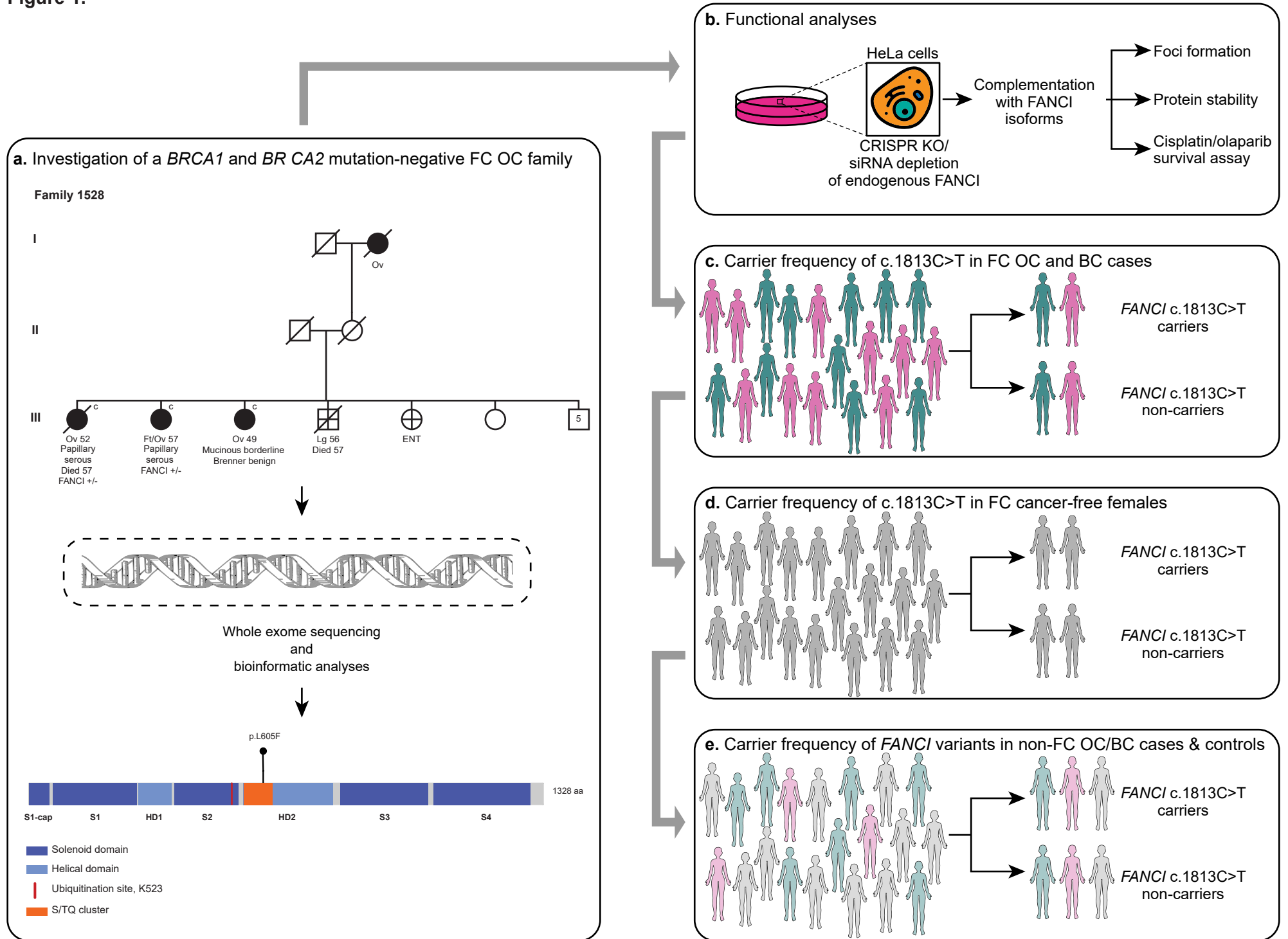


Figure 2.

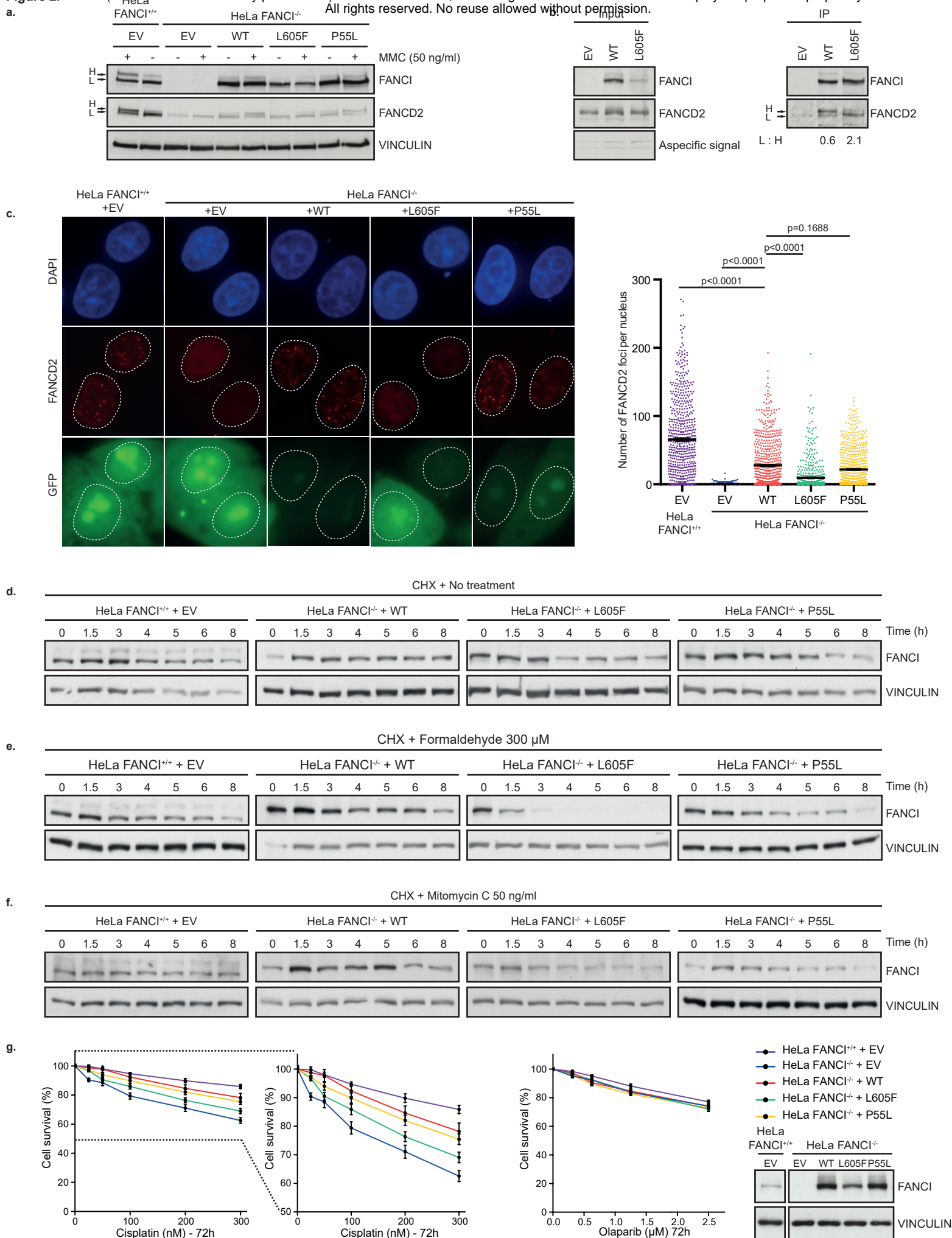


Figure 3.

Family 1620

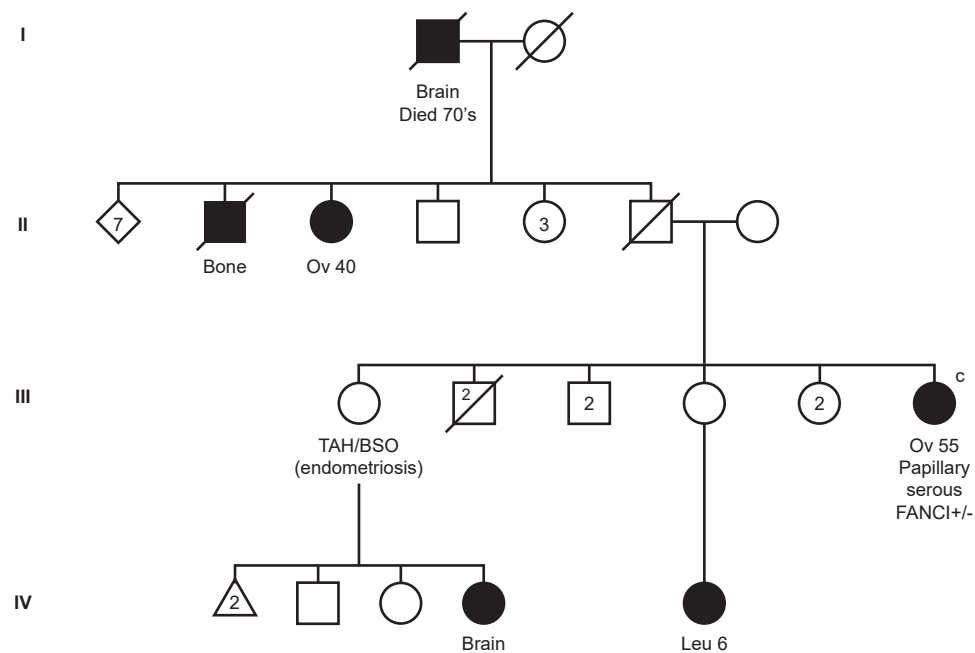


Figure 4.

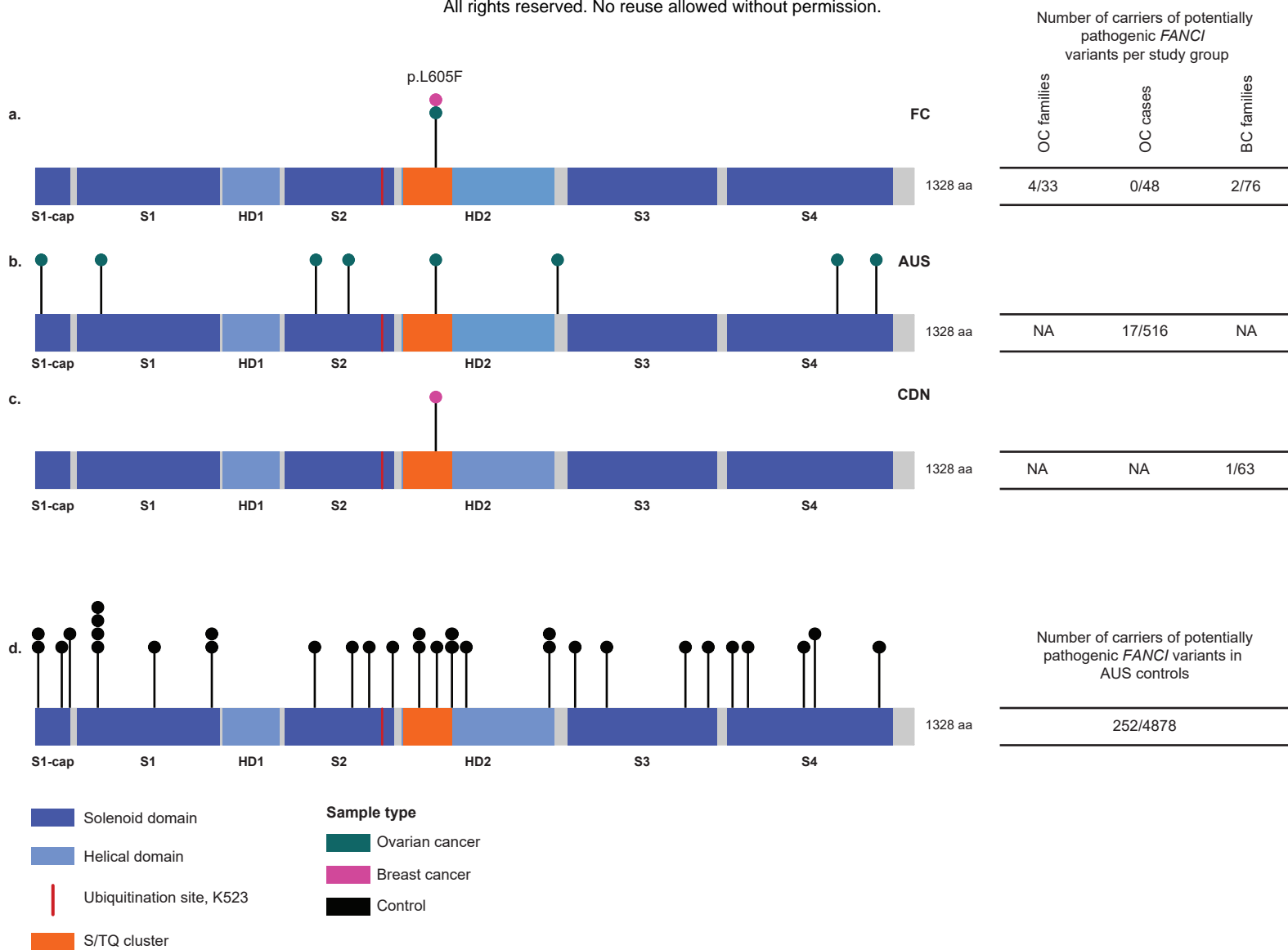


Figure 5.

