

Excess Mortality in the United States During the Peak of the COVID-19 Pandemic

Abstract

Background: Deaths are frequently under-estimated during emergencies, including hurricanes and pandemics. Accurate mortality data may improve public compliance with non-pharmaceutical interventions.

Methods: This study estimates excess all-cause, pneumonia, and influenza mortality during the COVID-19 health emergency using a semiparametric method and a conventional time-series method --- in 9 states in the United States using weekly mortality data from the Mortality Surveillance Survey from September 27, 2015 to April 18, 2020. We chose 9 states with high reported COVID-19 deaths and apparently complete mortality data: California, Colorado, Florida, Illinois, Massachusetts, Michigan, New Jersey, New York, and Washington.

Findings: For the United States, we estimated more excess deaths than COVID-19 official mortality (excess mortality 95% CI (44256, 62263) vs. 34571 COVID-19 deaths). Furthermore: California (excess mortality 95% CI (1347, 3494) vs. 1072 COVID-19 deaths); Colorado (95% CI (622, 1012) vs. 391 COVID-19 deaths); Illinois (95% CI (1931, 2896) vs. 1259 COVID-19 deaths); Massachusetts (95% CI (2128, 2921) vs. 1983 COVID-19 deaths); Michigan (95% CI (3223, 4270) vs. 2308 COVID-19 deaths); New Jersey (95% CI (7799, 9740) vs. 4070 COVID-19 deaths); and New York (95% CI (22420, 27349) vs. 13362 COVID-19 deaths).

Interpretation: Official COVID-19 mortality figures substantially understate actual mortality and suggest greater case-fatality rates. Some excess mortality may be due to not seeking care for emergent severe conditions. Improving the

speed and scope of data dissemination of mortality and syndromic surveillance may reduce mortality in future pandemics by improving public adherence to non-pharmaceutical interventions and improving care-seeking for emergent conditions.

1 Introduction

The number of COVID-19 deaths may be under-reported. The Centers for Disease Control and Prevention issues guidelines to determine cause of deaths, but underestimating the death toll of natural disasters, heatwaves, influenza, and other emergencies is common. In some cases, the underestimates can be extreme: chikungunya was associated with only 31 deaths during a 2014-15 epidemic in Puerto Rico, but time series analysis estimated excess mortality of 1310 deaths.[1] Another example includes gross under-estimation of Hurricane Maria's death toll.[2] Deaths directly due to the COVID-19 pandemic may be underestimated due to under-diagnosis [3],insufficient postmortem SARSCoV-2 tests, not seeking health care [4], and incomplete disease nosology and consequent confirmation bias. Deaths indirectly due to an emergency are also common, due to an overloaded health system [5] or lack of healthcare access for routine care: during the 2014 West Africa Ebola epidemic, lack of routine care for malaria, HIV/AIDS, and tuberculosis led to an estimated 10,600 additional deaths in the area.[6] Health emergencies may also lead to indirect deaths from economic, social, and emotional stress [7] and crowded emergency departments.[8]

In this study, we estimate excess all-cause, pneumonia, and influenza mortality during the COVID-19 pandemic; which estimates deaths both directly and indirectly related to COVID-19. Directly related COVID-19 deaths include deaths in patients who have undetected SARS-CoV-2 due to false negative tests [9], not seeking health care [4], or being turned away from the emergency department due to emergency department crowding [8]. Testing and forensic staff shortfalls lead to lack of postmortem testing. Indirect deaths may include deaths among patients due to emergency department crowding [8]; avoidance of hospitals due to fear of the virus; or avoidance of health care due to the accompanying economic recession, such as loss of employment or income, or loss of health insurance coverage.[10]

2 Methods

2.1 Data and measures

Weekly all-cause, pneumonia, and influenza mortality for each state from September 27, 2015 (week 40) to April 18, 2020 (week 15) were obtained from the National Center for Health Statistics (NCHS) Mortality Surveillance Survey data release on May 8, 2020. The timeliness in death certificate reporting varies by region, state, and cause of death.[11] We use pneumonia and influenza mortalities because COVID-19 deaths could be misclassified as pneumonia or influenza. The NCHS divides New York State into two jurisdictions: New York City (NYC) and non-NYC New York State, and we leave them separate for plots and combine them for statistical models.

Our statistical method can estimate excess mortality in regions with considerable fatalities. In regions with small number of deaths, our method may not be able to detect the effects of the emergency because the confidence intervals are too wide. We identified 9 jurisdictions within this data that had high numbers of reported COVID-19 deaths and appeared to have complete death data, based on the NCHS measure of completeness. The states were: California, Colorado, Florida, Illinois, Massachusetts, Michigan, New Jersey, New York, and Washington.

Population estimates were from Vintage 2019 Census yearly estimates for July 1 of each year 2010–19, which were used to obtain weekly population estimates.[12]

We obtained COVID-19 mortality as of 4/18/2020 from the New York Times COVID-19 data repository, based on reports from state and local health agencies.[13]

This study is an analysis of publicly available data in broad categories such that individuals cannot be identified, so it is not human subjects research and is exempt from requiring human subjects board review.

2.2 Statistical Analysis

We construct two models to capture the temporal behavior of death certificate data to estimate excess mortality during the COVID-19 pandemic: a semiparametric model and a conventional model estimating the difference in current death totals starting from the beginning of a health emergency and the projected deaths under normal conditions [14].

2.3 Semiparametric model

We use a semiparametric model to capture the temporal behavior of all-cause mortality while measuring how the beginning of an emergency alters the ‘normal’ mortality pattern. This model was successfully deployed to estimate excess deaths due to Hurricane Maria in Puerto Rico [2].

We use a general additive model with the following covariates: the natural logarithm of population as an offset, a smooth function of week of the year, year, and an indicator function that presents the possibility that the mean death rate has increased after the start of the emergency in a location. Week of the year is modeled non-parametrically with a penalized cyclic cubic regression spline function to capture seasonal mortality variations [15].

Preliminary analysis indicated overdispersion, so we used a quasi-Poisson model to estimate the dispersion parameter [16]. We estimated coefficients by a penalized likelihood maximization approach, where the smoothing penalty parameters are determined by restricted maximum likelihood. The residuals of the fitted model (1) did not present remaining temporal dependence.

To estimate cumulative excess deaths, we sum the coefficients of the indicator for the start of the emergency. Approximate simulations from the Bayesian posterior density are performed to obtain 95% credibility intervals, which we will refer to as confidence intervals throughout.

For each state, we determine excess deaths due to the COVID-19 emergency from a starting point through April 18, the date of the most recent complete

mortality data. The starting point was the date after the most recent inflection point in all-cause mortality, suggesting the onset of the COVID-19 emergency, chosen to balance concerns of deaths prior to the official first cases and the sensitivity of the model to detect small excess mortality in the limited available data, exacerbated by the provisional counts being lower than actual deaths. This semiparametric model can incorporate population displacement [2], but we are not aware of significant displacement during the pandemic. Data from New York City Department of Sanitation indicates that 4 wealthy Manhattan community districts — community districts 3, 7, 8, and 11, with a combined population of under 800,000 people – had 3–5% lower tonnage for the month of March 2020 than March 2019, whereas New York City as a whole had 4.1% more waste collected in March 2020 than March 2019.[17] If the population of these community districts decreased by about 10%, the total population of New York City decreased by less than 1%.

The models were fit using version 1.8-28 of the *mgcv* package in R 3.6.3 between April 12, 2020 and May 3, 2020 [15, 18]. All code and data will be made publicly available.

2.4 A more conventional excess deaths analysis

We also estimate excess mortality using a conventional excess mortality method: we fit a Quasi-Poisson semiparametric model as above until February 1, 2020.

The deaths from February 8, 2020 forward should follow a Poisson distribution with some expected rate; the maximum likelihood estimator of such rate is the mean weekly deaths during this period. Weekly deaths will be approximately normal with a variance that accounts for overdispersion according to the scale parameter in the fitted model. From this distribution, we simulate 10,000 weekly deaths and subtract the results from the posterior distributions of the fitted results. The 95% confidence interval is the range between the 2.5% and 97.5% percentiles of all excess deaths.

2.5 Assessing reduction in emergency department utilization

To assess whether the COVID-19 emergency was associated with reduced emergency department (ED) utilization, we used data from the National Syndromic Surveillance Program (NSSP). We identified 3 of the United States top 5 causes of death that present with acute symptoms that require immediate treatment, for which the choice not to seek health care may result in death: heart disease, chronic lower respiratory diseases, and cerebrovascular disease. The only such data available were ED visits in New York City for asthma symptoms. We obtained daily counts of asthma ED visits, age group (5–17, 18–64, 65+), borough, and date from the New York City Department of Health and Mental Hygiene’s EpiQuery website from January 1, 2016 to April 18, 2020. We were unable to obtain data from the other 58 NSSP jurisdictions, or for symptoms suggesting cardiovascular or cerebrovascular conditions.

To evaluate whether there was a reduction in emergency department visits during the COVID-19 emergency, we fit a quasi-Poisson regression for daily number of asthma-related emergency department visits in New York City, controlling for borough, age group, and date, with an indicator for date after 3/21/20, which estimated a dispersion parameter of 1.95.

3 Results

Provisional death counts increase with each data release, especially for recent weeks. The variation on reporting timeliness by state hinders excess death assessment for the United States. Figure 1 illustrates how the latest release of

weekly mortality counts ‘blankets’ each previous release. Moreover, the pandemic increased the delay of reliable data.

Colorado, Illinois, Massachusetts, Michigan, New Jersey, New York City, and New York State show marked increases in all-cause weekly mortality (Figure 2). All states have excess pneumonia mortality, but only New York City has excess influenza deaths (Figure 3)

COVID-19 mortality is greater for older patients, which can exacerbate the dilution of excess deaths for all of the United States. Using the semiparametric model, between March 21, 2020 and April 18, 2020 we are 95% confident that all-cause excess deaths in the United States were between 44256 and 62263, compared with 34571 reported COVID deaths. This is at least 9685 more deaths than official COVID-19 deaths for the same time period. Pneumonia excess deaths were between 21541 and 26608. Using the conventional method we found a 95% confidence interval of 39587 and 69458 for all-cause excess deaths, and 21372 and 26417 for pneumonia deaths.

Table 1 presents for each state 95% confidence intervals for all-cause, pneumonia, and influenza excess deaths. We estimated greater excess mortality than COVID-19 deaths in 7 of 9 states: California, Colorado, Illinois, Massachusetts, Michigan, New Jersey, and New York. Washington and Florida present significant all-cause excess mortality but there was no evidence of them exceeding official COVID-19 death counts. However, relative to expected numbers of pneumonia and influenza deaths, we observe excess pneumonia deaths in all states studied, and excess influenza deaths in New York and New Jersey (Table 1). To evaluate whether the apparent misclassification of COVID-19 deaths as influenza in New York City is attributable to urbanicity, we evaluated influenza mortality in the District of Columbia, the other urban-only area, but influenza deaths were not higher than usual (not shown).

With the conventional model, we estimate more excess all-cause deaths in Illinois, Massachusetts, Michigan, New Jersey, and New York than reported COVID-19 cases (Table 1); and once more excess pneumonia deaths are observed for all states. These results are also consistent with the excess mortality results for the earlier data release covering through April 18, 2020 (not shown).

We found that during the period of the COVID-19 emergency in New York City, asthma visits were 64% lower than expected (IRR = 0.36, 95% CI (0.34, 0.37)).

We define unexplained excess deaths as those excess deaths not attributed to COVID-19, pneumonia or influenza. To estimate unexplained excess deaths - and focusing on the semiparametric model results- we subtract pneumonia excess deaths and official COVID-19 deaths, and in the case of New York and New Jersey influenza excess deaths, from all-cause excess deaths. Assuming these excess deaths estimates are independent, we can then use the Bayesian approximation described in the methods section to find 95% confidence intervals of unexplained excess deaths for each state. This way we determine with 95% confidence that between 213 and 2,267 unexplained excess deaths occurred in New Jersey until April 18. There was no evidence of unexplained excess deaths in any of the other states studied, but this is likely due to our conservative way to estimate unexplained deaths. As the emergency continued for a considerable time, we suspect unexplained excess deaths have been meaningful but data limitations do not allow to accurately measure this. Moreover, additional data would reduce the uncertainty in our estimates.

The results of the semiparametric and conventional models are generally compatible. But since our conventional model also reflects random fluctuations in mortality, prediction intervals are obtained, which naturally present larger variation than confidence intervals. Treating the deaths as fixed [14] would lead to intervals that are misleadingly short on width. The larger uncertainty in the conventional model makes it harder to interpret excess deaths.

4 Discussion

Mortality underestimation may reduce the public's willingness to adhere to costly and stressful non-pharmaceutical interventions, such as governors' orders to stay at home, wear masks, and engage in social distancing. The conventional method generally resulted in intervals of larger width. Since this hinders interpretation of excess deaths, we focus on interpreting results from the semiparametric model. We find substantial excess all-cause mortality that exceeds the number of documented COVID-19 deaths in Colorado, Illinois, Massachusetts, Michigan, New Jersey, and New York. The CDC has established guidelines for certifying COVID-19 deaths [19] and whether to collect postmortem specimens for SARS-CoV-2 testing [20]. Underestimation of mortality may be due to subjective interpretations of guidelines, infrastructure limitations caused by the emergency, and undetected SARS-CoV-2 due to lack of outpatient and postmortem testing. The CDC also

estimates point estimates of excess mortality, but our methods quantify uncertainty, and the semiparametric method yields more precise confidence intervals than a conventional approach.

We quantify higher pneumonia mortality than expected in all 9 states and higher influenza deaths primarily in New York. For New Jersey, even when adjusting for COVID-19 official deaths, pneumonia and influenza mortality, excess deaths are still significant. This raises the prospect of COVID-19 deaths being misclassified or indirect deaths being substantial in this state. With only limited cause of death data, our analysis is unable to distinguish between COVID-19 deaths being misclassified and indirect deaths.

Our findings suggest large excess deaths due to the COVID-19 emergency, even with incomplete death counts during the mid-April mortality peaks due to the reporting lag [13]. COVID-19 test access, as measured by decreased percent of COVID-19 tests that are positive, has increased with time in the US [21], but substantial heterogeneity across states [22] means that excess mortality may not decrease substantially unless test availability increases in high-prevalence states. Although we find significant influenza excess deaths primarily for New York state, influenza excess deaths in other states may become apparent in subsequent data releases.

Some excess mortality may include indirect deaths from chronic lower respiratory diseases, such as deaths due to not seeking care for asthma syndrome due to fear of becoming infected with SARS-CoV-2 during the COVID-19 emergency. Likewise, if patients with heart attacks and stroke did not seek care due to the COVID-19 emergency, that would explain additional excess mortality. Media reports suggest that some people with acute conditions that require immediate care, such as heart attacks and strokes, have not gotten care.¹ However, emergency department visit data are not released in the NSSP, as for asthma syndrome ED visits. When these data are released, we would expect more deaths at home coded as chronic lower respiratory diseases, cardiovascular disease, and cerebrovascular diseases; normally, these are three of the top five causes of death in the US, so reduced care seeking could contribute substantially to excess mortality.²

Patients who suspect COVID-19 may also be turned away from emergency departments: these patients would not have SARS CoV-2 test results, so they would not be coded as COVID-19 deaths. Many patients with ILI never seek health care, including patients likely to have severe effects: about 45% of patients with heart disease and 52% with COPD delay at least 3

¹ <https://www.nytimes.com/2020/04/06/well/live/coronavirus-doctors-hospital-emergency-care-heart-attack-stroke.html>; <https://www.nytimes.com/2020/04/25/health/coronavirus-heart-stroke.html>

² <https://www.cdc.gov/nchs/fastats/leading-causes-of-death.htm>

days [23], and during a flu pandemic care-seeking increases by only about 10 percentage points [4]. Dyspnea/ breathlessness predicts health care seeking for ILIs [24]. However, most severe or fatal COVID-19 cases do not present with dyspnea [25], and lung damage can be substantial even without dyspnea [26].

In addition, excess mortality may be due to sudden health declines, which have been observed in COVID-19 inpatient populations: patients decline in minutes from ambulatory/conversant to unresponsive and requiring resuscitation [27], and such sudden health declines could also occur in outpatient populations.

Some but not all of the excess COVID-19 mortality is captured by pneumonia excess mortality, but some sudden deaths seem to occur among patients without apparent pneumonia [28]. These deaths may be due to cardiac injury [29], kidney or liver injury [30], or hypercoagulability [31].

Excess mortality during heatwaves and influenza pandemics often shows mortality displacement (or harvesting effect), where subsequent mortality declines [32]. Longer observation periods will be able to detect mortality displacement, but inconsistent non-pharmaceutical intervention policies across the United States may cause elevated mortality due to COVID-19 to persist over longer durations than during typical influenza pandemics.

COVID-19 appears to be misclassified as influenza primarily in New York City. The misclassification may be due to heterogeneity in cause of death determination and/or COVID-19 presentations between New York City and the states examined. Alternatively, the misclassification may occur in many jurisdictions, but it is more detectable in NYC due to the large number of deaths.

4.1 Strengths and Limitations

Lags in death reporting in these provisional data suggest that this analysis understates excess all-cause, pneumonia, and influenza mortality, and these lags are differential by state. The data at the time of retrieval likely excludes deaths not yet reported and/or included in provisional data releases. Completeness varies by state because states submit death certificates at different rates using various methods. The measure of completeness included in these data — total weekly deaths divided by expected deaths based on average weekly deaths over the entire year during the previous 3 years — cannot accurately assess completeness during any period of elevated mortality, including seasonal influenza increases.

Our hypothesized mechanisms for excess mortality are based on existing research, but the available mortality data are insufficient to test these hypotheses. For example, deaths at home are not published weekly or

systematically. The available U.S. data includes data aggregated over all states stratified by age (0–17, 18–64, 65+) and region; however, these data do not allow identification of all-cause mortality trends by region or age because some states are incomplete, even by the available completeness measure, which understates completeness during periods of elevated mortality.

Our analysis examines excess deaths associated with the pandemic emergency. It is likely that the longer the period since the beginning of the emergency, the more indirect causes of death are included in our excess deaths estimate. The vast majority of excess mortality is not attributable to social distancing or the pandemic-induced recession because recessions are generally associated with lower mortality [33].

We can evaluate whether emergency department visits for asthma in New York City decreased during the COVID-19 emergency, but we can't evaluate whether the decrease in asthma ED visits increased mortality because chronic lower respiratory mortality data from this period are not currently available. We also cannot evaluate for other syndromes or for other jurisdictions because of limitations in the National Syndromic Surveillance Program data and its public availability.

4.2 Implications for policy and practice

Research can identify populations at risk for mortality that may not be included in the official COVID-19 counts, and the overlap with groups affected by other health disparities, so resources can be allocated to the most affected communities. Excess mortality may be reduced by prioritizing research including random sample testing of people without symptoms and postmortem tests [34]. To avoid ascertainment bias, random sample postmortem testing can identify atypical disease presentations that may be under-recognized in clinical settings. In the face of testing limitations, postmortem tests may be viewed as expendable, but postmortem testing can improve patient care by identifying gaps in diagnosis and treatment.

To identify under-use of health care for cardiovascular and cerebrovascular conditions, National Surveillance System Program data should include these indications and current data should be available for all NSSP locations; New York City's system suggests that this change is feasible. Future federal pandemic planning should include upgrades to state vital statistics infrastructure, so that all states can report deaths in a timely fashion. As suggested after earlier pandemics [35], pandemic planning should identify how to release more detailed data so that research can discriminate between mechanisms of excess mortality, especially for high-vulnerability jurisdictions. Research using detailed data will find some spurious findings,

including cases who died with the virus but not of the virus, but more detailed data will save lives by identifying vulnerable communities to allocate resources to, as well as atypical symptoms of the disease.

4.3 Conclusions

Excess all-cause mortality exceeding the number of reported COVID-19 deaths is evident in many high-COVID-19 states; in New York State and New Jersey deaths associated with the COVID-19 pandemic appear to be twice as high as reported. Greater test availability, including postmortem tests, can yield more accurate mortality counts and case-fatality ratios, and increase the public's willingness to adhere to non-pharmaceutical interventions to reduce transmission.

5 References

- [1] Freitas ARR, Donalisio MR, Alarcón-Elbal PM. Excess mortality and causes associated with chikungunya, Puerto Rico, 2014–2015. *Emerging infectious diseases*. 2018; 24(12):2352.
- [2] Rivera R, Rolke W. Modeling excess deaths after a natural disaster with application to hurricane Maria. *Statistics in medicine*. 2019;38(23):4545–4554.
- [3] Krantz SG, Rao ASRS. Level of underreporting including underdiagnosis before the first peak of COVID-19 in various countries: Preliminary retrospective results based on wavelets and deterministic modeling. *Infection Control and Hospital Epidemiology*. 2020; 1–3.
- [4] Ma W, Huo X, Zhou M. The healthcare seeking rate of individuals with influenza like illness: A meta-analysis. *Infectious Diseases*. 2018; 50(10):728–735. DOI:10.1080/23744235.2018.1472805.
- [5] Simonsen L, Spreuwenberg P, Lustig R, et al. Global mortality estimates for the 2009 influenza pandemic from the glamor project: a modeling study. *PLoS medicine*. 2013; 10(11).
- [6] Parpia AS, Ndeffo-Mbah ML, Wenzel NS, Galvani AP. Effects of response to 2014–2015 Ebola outbreak on deaths from malaria, HIV/AIDS, and tuberculosis, West Africa. *Emerging infectious diseases*. 2016; 22(3):433.

- [7] Shah SM, Carey IM, Harris T, et al. The effect of unexpected bereavement on mortality in older couples. *American Journal of Public Health*. 2013; 103(6):1140– 1145.
- [8] Hoot NR, Aronsky D. Systematic Review of Emergency Department Crowding: Causes, Effects, and Solutions. *Annals of Emergency Medicine*. 2008; 52(2):126–136.e1.
- [9] Richardson S, Hirsch JS, Narasimhan M, et al. Presenting Characteristics, Comorbidities, and Outcomes Among 5700 Patients Hospitalized With COVID-19 in the New York City Area. *JAMA*, April 2020.
- [10] Woolhandler S, Himmelstein DU. Intersecting U.S. Epidemics: COVID-19 and Lack of Health Insurance. *Annals of Internal Medicine*, April 2020. DOI: 10.7326/M20-1491
- [11] Spencer MR, Ahmad F. Timeliness of death certificate data for mortality surveillance and provisional estimates. vital statistics rapid release special report no. 001. us department of health and human services, centers for disease control and prevention. *National Center for Health Statistics, National Vital Statistics System*. <https://www.cdc.gov/nchs/data/vsrr/report001.pdf>, 2016.
- [12] US Census Bureau. National Population by Characteristics: 2010-2019. <https://www.census.gov/data/tables/time-series/demo/popest/2010snational-detail.html>. Accessed April 30, 2020.
- [13] New York Times. Coronavirus in the U.S.: Latest Map and Case Count. <https://www.nytimes.com/interactive/2020/us/coronavirus-uscases.html>, April 2020. Accessed April 30, 2020.
- [14] Santos-Burgoa C, Sandberg J, Suárez E, et al. Differential and persistent risk of excess mortality from hurricane Maria in Puerto Rico: a time-series analysis. *The Lancet Planetary Health*. 2018; 2(11):e478–e488.
- [15] Wood SN. *Generalized additive models: an introduction with R*. Boca Raton, FL: Chapman and Hall/CRC, 2017.
- [16] Ver Hoef JM, Boveng PL. Quasi-poisson vs. negative binomial regression: how should we model overdispersed count data? *Ecology*. 2007;88(11):2766–2772.

- [17] Goldensohn RGS, Choi A. Garbage Pickups Tell a Tale of Two Cities, With Part of Manhattan Shrinking. <http://thecity.nyc/2020/04/garbage-pickups-tell-tale-of-two-cities-asmanhattan-shrinks.html>, April 2020. Accessed May 1, 2020.
- [18] R Core Team. *R: A Language and Environment for Statistical Computing*. R Foundation for Statistical Computing, Vienna, Austria, 2016.
- [19] National Vital Statistics System. Guidance for Certifying Deaths Due to Coronavirus Disease 2019 (COVID-19). *National Vital Statistics System: Vital Statistics Reporting Guidance*, (Report 3), April 2020. <https://www.cdc.gov/nchs/data/nvss/vsrg/vsrg03-508.pdf> Accessed May 3, 2020.
- [20] Coronavirus Disease 2019 (COVID-19): Collection and submission of postmortem specimens from deceased persons with known or suspected COVID. <https://www.cdc.gov/coronavirus/2019-ncov/hcp/guidance-postmortem-specimens.html> Accessed May 3, 2020.
- [21] Centers for Disease Control and Prevention. COVIDView: A weekly surveillance summary of U.S. COVID-19 activity. <https://www.cdc.gov/coronavirus/2019-ncov/coviddata/covidview/index.html>, May 2020. Accessed May 1, 2020.
- [22] Alexis Madrigal, Jeffrey Hammerbacher, Erin Kissane, and COVID Tracker team. COVID Tracking Project. <https://covidtracking.com/data>. Accessed May 3, 2020.
- [23] Biggerstaff M, Jhung MA, Reed C, Fry AM, Balluz L, Finelli L. Influenza-like illness, the timeto seek healthcare, and influenza antiviral receipt during the 2010-2011 influenza season-United States. *The Journal of Infectious Diseases*. 2014;210(4):535–544.
- [24] Parshall MP, Schwartzstein RM, Adams L, et al. An Official American Thoracic Society Statement: Update on the Mechanisms, Assessment, and Management of Dyspnea. *American Journal of Respiratory and Critical Care Medicine*. 2012; 185(4):435–452.
- [25] Li R, Tian J, Yang F, et al. Clinical characteristics of 225 patients with COVID-19 in a tertiary Hospital near Wuhan, China. *Journal of Clinical Virology: The Official Publication of the Pan American Society for Clinical Virology*. 2020; 127:1043-63.

- [26] Li LQ, Huang T, Wang YQ, et al. COVID-19 patients' clinical characteristics, discharge rate, and fatality rate of meta-analysis. *Journal of Medical Virology*, March 2020.
- [27] Lescure FX, Bouadma L, Nguyen D, et al. Clinical and virological data of the first cases of COVID-19 in Europe: A case series. *The Lancet Infectious Diseases*, 2020.
- [28] Lin L, Lu L, Cao W, Li T. Hypothesis for potential pathogenesis of SARS-CoV-2 infection—a review of immune changes in patients with viral pneumonia. *Emerging Microbes & Infections*. 2020; 9(1):727– 732
- [29] Guo T, Fan Y, Chen M, et al. Cardiovascular Implications of Fatal Outcomes of Patients With Coronavirus Disease 2019 (COVID-19). *JAMA cardiology*, March 2020.
- [30] Cheng Y, Luo R, Wang K, et al. Kidney disease is associated with in-hospital death of patients with COVID-19. *Kidney International*. 2020; 97(5):829–838.
- [31] Terpos E, Ntanasis-Stathopoulos I, Elalamy I, et al. Hematological findings and complications of COVID-19. *American Journal of Hematology*, April 2020.
- [32] Lytras T, Pantavou K, Mouratidou E, Tsiodras S. Mortality attributable to seasonal influenza in Greece, 2013 to 2017: Variation by type/subtype and age, and a possible harvesting effect. *Euro Surveillance: Bulletin Europeen Sur Les Maladies Transmissibles = European Communicable Disease Bulletin*. 2019;24(14).
- [33] Margerison-Zilko C, Goldman-Mellor S, Falconi A, Downing J. Health Impacts of the Great Recession: A Critical Review. *Current epidemiology reports*. 2016; 3(1):81–91.
- [34] Lipsitch M, Swerdlow DL, Finelli L. Defining the Epidemiology of Covid-19 — Studies Needed. *New England Journal of Medicine*. 2020;382(13):1194–1196. eprint: <https://doi.org/10.1056/NEJMp2002125>.
- [35] Prieto DM, Das TK, Savachkin AA, Uribe A, Izurieta R, Malavade S. A systematic review to identify areas of enhancements of pandemic simulation models for operational use at provincial and local levels. *BMC public health*. 2012; 12:251.

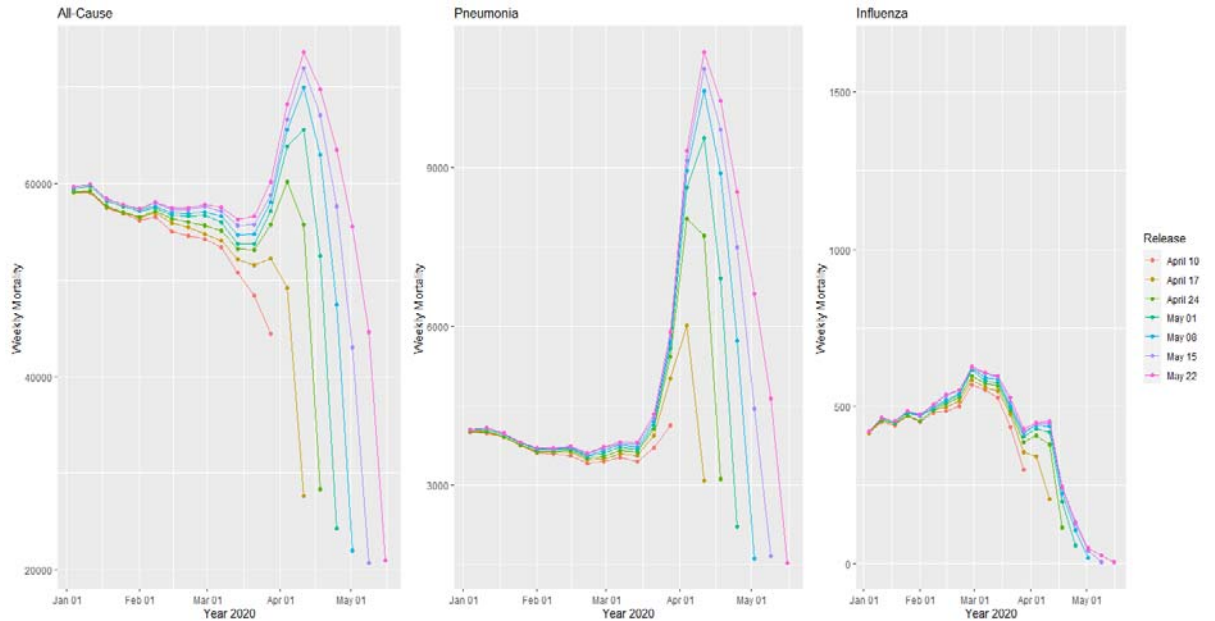


Figure 1: Provisional weekly mortality all-cause, pneumonia and influenza counts for the United States from weekly data releases April 10–May 22, 2020

Jurisdiction	Start Date	Deaths	All-cause Excess Deaths		Pneumonia Excess Deaths		Influenza Excess Deaths	
			Semiparametric	Conventional	Semiparametric	Conventional	Semiparametric	Conventional
California	3/21/2020	1072	(1347, 3494)	(790, 5354)	(856, 1314)	(872, 1711)	(-59, 61)	(101, 362)
Colorado	3/21/2020	391	(622, 1012)	(376, 1125)	(345, 482)	(270, 479)	(-17, 20)	(-55, 35)
Florida	3/21/2020	754	(393, 1469)	(-522, 2351)	(571, 810)	(777, 1252)	(-28, 21)	(-188, 11)
Illinois	3/21/2020	1259	(1931, 2896)	(2005, 3872)	(859, 1149)	(879, 1267)	(-13, 46)	(6, 131)
Massachusetts	3/28/2020	1983	(2128, 2921)	(2041, 3356)	(749, 986)	(755, 1083)	(-20, 13)	(-102, 32)
Michigan	3/21/2020	2308	(3223, 4270)	(2801, 4447)	(1419, 1784)	(1390, 1762)	(-36, 34)	(-33, 130)
New Jersey	3/21/2020	4070	(7799, 9740)	(7934, 9324)	(3132, 3813)	(3267, 3652)	(2, 40)	(-46, 54)
New York	3/21/2020	13362	(22420, 27349)	(23799, 26509)	(7958, 9499)	(8366, 8984)	(615, 833)	(556, 824)
Washington	2/29/2020	598	(278, 1122)	(-71, 1140)	(271, 487)	(248, 513)	(-4, 67)	(-28, 70)

Table 1: Excess all-cause, pneumonia, and influenza mortality 95% confidence intervals from 2 models, from states with the largest reported COVID-19 mortality as of 4/18/2020, and with official COVID-19 toll. All data used included mortality until 4/18/2020 included in the 5/22/2020 data release.

The semiparametric method uses a starting date, but the conventional method does not.

Technically, the table presents prediction intervals for the conventional method.

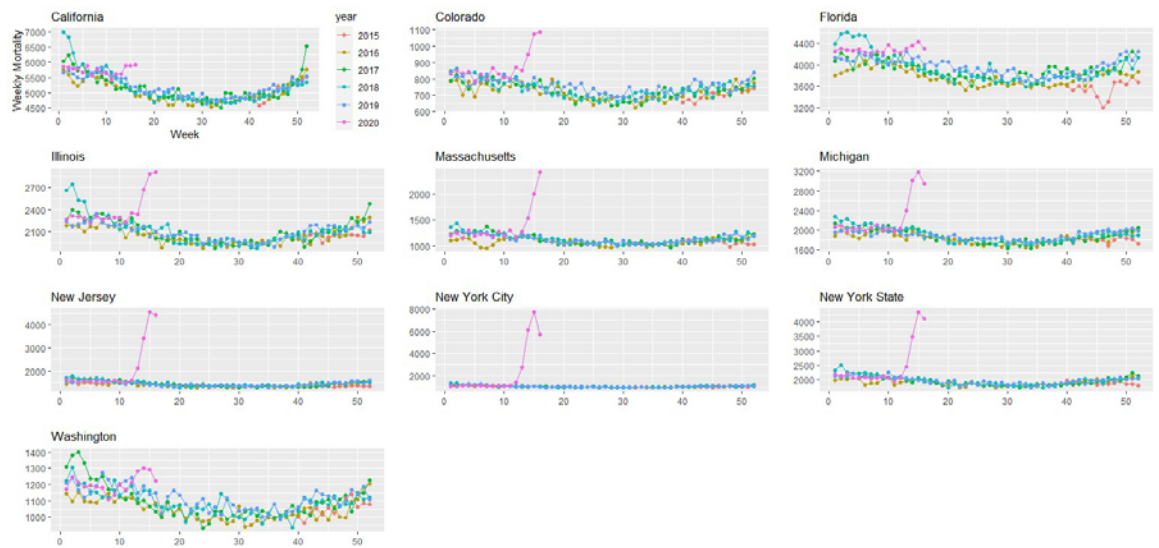


Figure 2: Weekly all-cause mortality grouped by year and state starting on week 40 of 2015 until 4/18/2020.

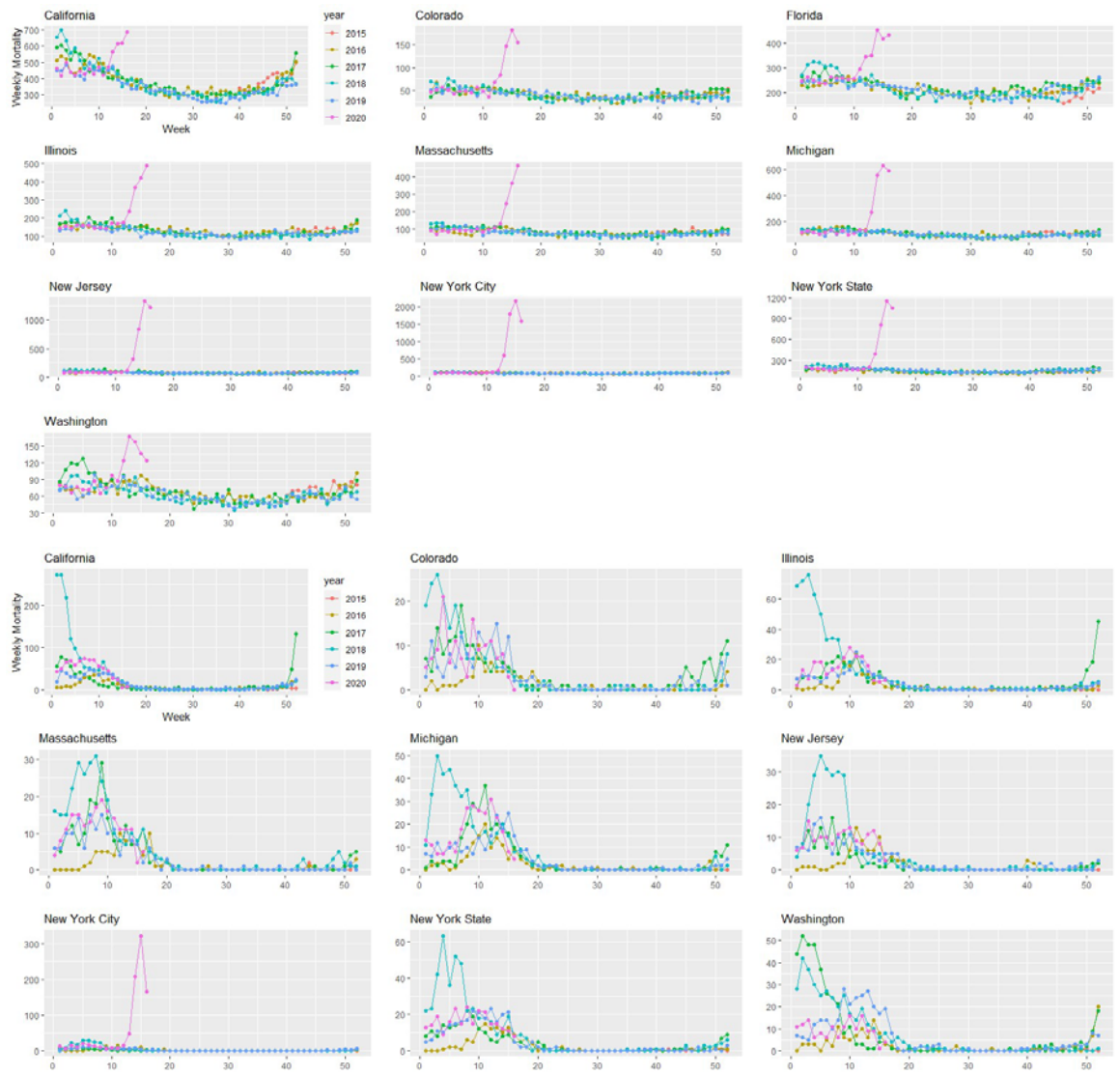


Figure 3: Weekly (1) pneumonia and (2) influenza mortality grouped by year and state starting on week 40 of 2015 until 4/18/2020.