

“Changes in soluble CD163 indicate monocyte involvement in cognitive deficits in Parkinson’s disease”

Sara K. Nissen¹, Sara A. Ferreira¹, Claudia Schulte², Kalpana Shrivastava¹, Dorle Hennig³, Jonas Graversen³, Walter Maetzler⁴, Daniela Berg^{2,4}, Anne Panhelainen⁵, Holger J. Møller⁶, Kathrin Brockmann², Marina Romero-Ramos^{1#}

1. DANDRITE & Department of Biomedicine, Aarhus University, Aarhus, Denmark.
2. Center of Neurology, Department of Neurodegeneration and Hertie-Institute for Clinical Brain Research & German Center for Neurodegenerative Diseases, University of Tuebingen, Tuebingen, Germany.
3. Department of Molecular Medicine, University of Southern Denmark, Odense, Denmark
4. Department of Neurology, Christian-Albrechts University, Kiel, Germany.
5. Institute of Biotechnology, University of Helsinki, Helsinki, Finland.
6. Department of Clinical Biochemistry, Aarhus University Hospital, Aarhus, Denmark

Corresponding author: Marina Romero-Ramos, Dept. of Biomedicine, Aarhus University, Høegh-Guldbergsgade 10, DK-8000C Aarhus, Denmark. Phone: +45 87167854. E-mail: mrr@biomed.au.dk

ABSTRACT:

Parkinson’s disease is a neurodegenerative disorder with a significant immune component. Numerous studies have reported alterations on immune biomarkers in CSF and serum that associate with symptoms in PD patients. However, it is unclear, which specific immune cells are responsible for the changes in those biomarkers; since most of these cytokines or chemokines, can be produced by a variety of immune cells, or even neurons or glia cells in the brain. Here, we investigate a monocyte/macrophage-specific biomarker: sCD163, the soluble form of the receptor CD163. Our data from two cohorts show that the CSF-sCD163 increases as the disease progresses, together with a correlated increase in PD-specific as well as neurodegeneration-associated disease biomarkers: alpha-synuclein, tau, and phosphorylated-Tau. Moreover, CSF-sCD163 levels were inversely correlated to the cognitive scores MMSE and MOCA, with higher sCD163 indicating lower cognitive capacity. sCD163 was also increased in serum, although only in female PD patients, suggesting a gender distinctive monocyte-related immune response. CSF-sCD163 also correlated with molecules associated with endothelial cells, tissue infiltration, and activation of B cells and T cells in the PD patients. This suggests activation of both the adaptive and the innate immune system along with recruitment of lymphocytes and monocytes to sites of inflammation in the brain. In serum, sCD163 was associated with pro-inflammatory cytokines and acute phase proteins, suggesting a relation to chronic systemic inflammation. Interestingly, our *in vitro* study suggests that sCD163 might enhance alpha-synuclein uptake by myeloid cells without direct binding, thus participating in the clearance of alpha-synuclein. Accordingly, our data supports sCD163 as a potential cognition-related biomarker in PD and corroborates a role for monocytes both in peripheral and brain immune responses that could have direct consequences in the handling of alpha-synuclein.

Key Words: monocytes, sCD163, biomarkers, cognition, alpha-synuclein, Parkinson

NOTE: This preprint reports new research that has not been certified by peer review and should not be used to guide clinical practice.

1 INTRODUCTION:

2

3 Parkinson's disease (PD) is the second most common neurodegenerative disorder and it is characterized by
4 intraneuronal aggregations of alpha-synuclein (α -syn) and a significant dopaminergic neuronal cell death in the
5 substantia nigra. Besides these neuronal events, the disease also involves an early and chronic immune activation
6 related to disease progression [78]. Indeed, post mortem analysis of PD brains has shown microgliosis, i.e. changes
7 in microglia number, morphology, and expression pattern in several areas of the brain [31]. This is also observed
8 using PET imaging in patients [20]. The immune response does not seem related to the occurrence of neuronal cell
9 death, but rather to the presence of α -syn pathology and the neurodegenerative process ongoing in each brain area.
10 α -syn seems to play a central role in the immune activation by acting as a damage-associated molecular pattern
11 (DAMP), initiating a sterile response, which contributes further to the disease progression [16].

12

13 The immune response in PD is not limited to the brain, but involves both innate and adaptive immune cells in the
14 peripheral immune system. Accordingly, we and others have previously shown changes in the monocytic
15 population in PD patients with an increased proliferative and phagocytic capacity, an abnormal response to
16 immune stimuli [57, 86], as well as their altered transcriptome compared to healthy individuals [71]. Moreover,
17 changes in T cells have also been described in PD patients; such as alterations in the different subpopulations with
18 an inclination towards pro-inflammatory Th1 and Th17 phenotypes [41, 77]. These peripheral alterations will also
19 affect the brain, since we and others have shown brain-infiltration by both T cells and monocytes in PD patients
20 and in animal models [6, 25, 79]. Indeed, the involvement of the (peripheral) immune system in PD is also
21 confirmed by the changes in cytokines and chemokines reported both in serum and CSF. A recent meta-analysis
22 reported that PD patients' blood showed increased levels of IL-1 β , TNF- α , IL-6, and IL-10, while in CSF, IL-1 β ,
23 IL-6, TGF- β 1 and CRP were increased, together with a decrease in interferon- γ (IFN- γ) [36]. This suggests a
24 complex immune response, with both pro-inflammatory and anti-inflammatory chronic processes occurring during
25 disease in brain and periphery. In addition, multiple studies have shown that these biomarkers correlated with the
26 symptomatology in PD, further supporting a malfunction of the immune system in the disease [78].

27

28 It was previously reported that PD-related immune biomarkers can be produced by a number of different cell types
29 (monocytes and/or lymphocytes, endothelial cells, and even glia and neurons), [87], therefore, these biomarkers
30 cannot truly reveal the unique intervention of each of the cell populations involved in the immune response.
31 Remarkably, this is not the case with the soluble CD163 (sCD163), a protein produced exclusively by the monocyte
32 cell lineage (monocytes, macrophages, and dendritic cells (DCs)), but not by lymphocytes, neurons [15, 63] or
33 microglia, which was confirmed in a recent study by single-cell RNA sequencing in mice [35]. In the brain, CD163
34 is found in meningeal macrophages and perivascular macrophages. sCD163 has been used as biomarker of diverse
35 diseases with an inflammatory component [15]. sCD163 is constitutively produced by cleavage of the extracellular
36 portion of CD163, the endocytic receptor for hemoglobin-haptoglobin complexes, and can be measured in
37 biological fluids (serum and CSF) [55]. The receptor's ectodomain is cleaved by the metalloproteinase ADAM17
38 [14], which also produces TNF- α and the soluble forms of other immune-related molecules and has been related

1 to Alzheimer [26]. This enzyme is activated by the TLR-4 cascade/signaling, and other stimuli including oxidative
2 stress and cell activation [49]. Therefore, an increased level of sCD163 in biofluids can relate to macrophage
3 activation and correlates with the degree of inflammation in different diseases with a relevant immune component
4 [15]. In the present study, we seek to analyze the levels of sCD163 in blood and CSF from PD patients at different
5 disease stages in order to evaluate the monocytic involvement in the disease progression. To do so, we correlated
6 this biomarker with well-accepted PD biomarkers and clinical symptoms, as well as screened for other potential
7 biomarkers. Our data support an important role for the monocytes in PD, particularly related to cognitive-decline,
8 and reveal sCD163 as a promising PD biomarker.

9

10 **MATERIALS AND METHODS:**

11

12 ***Participants***

13 PD patients have been recruited from the outpatient clinic and/or ward for Parkinson's disease at the University
14 Hospital of Tuebingen. Spouses of patients and volunteers recruited by newspaper advertisements were assessed
15 to have no neurodegenerative disease and served as control participants.

16

17 ***Clinical Investigations***

18 All participants were examined by a neurologist specialized in movement disorders. Diagnosis of PD was made
19 according to the UK Brain Bank Society Criteria [45]. None of the included patients showed "red flags" indicating
20 an atypical parkinsonism over time. PD patients were assessed in the dopaminergic ON state. We assessed severity
21 of motor symptoms using part III of the MDS Unified Parkinson's disease Rating Scale (MDS-UPDRS III) [22].
22 Disease stage was categorized by the modified Hoehn and Yahr Scale (H&Y) [21]. Cognitive function was tested
23 using the Montreal Cognitive Assessment (MoCA) [29] and/or the Mini Mental Status Examination (MMSE) [17].
24 Since the MoCA was available only from 2009 on, all previously obtained MMSE scores were converted into
25 MoCA equivalent scores according to published algorithm [4]. Cognitive impairment was defined according to
26 the DSM-IV (2003-2013) or DSM-V (2013-2019) criteria and/or MoCA ≤ 25 as reported by Hoops et al. (point of
27 maximum combined sensitivity and specificity) [29]. Mood disturbances were assessed using Beck's Depression
28 Inventory II (BDI II) [3]

29

30 ***Collection of CSF and serum Samples***

31 Spinal tap for CSF collection along with serum collection were performed between 9.00 AM and 1.00 PM. Samples
32 were directly taken from the bedside and centrifuged within 60 min after collection and frozen at -80°C within 90
33 min after collection. Samples with abnormal routine CSF diagnostics (white blood cell count >6 cells/ μ l,
34 Immunoglobulin Subtype G (IgG) index > 0.7) were excluded.

1
2
3
4
5
6
7
8
9
10
11
12
13
14
15
16
17
18
19
20
21
22
23
24
25
26
27
28
29
30
31
32
33
34
35
36
37

Ethical statement

The study was approved by the local ethics committee (480/2015BO2), with all participants providing informed consent.

Cohorts

The study was conducted on two cross-sectional idiopathic PD cohorts including controls (overview in **Fig. 1**). *Cohort #1*: Serum and CSF samples from 109 PD patients (early [$<5y$ from diagnosis] and late [$\geq 5y$ from diagnosis]) and 44 controls (**Table 1**). *Cohort #2*: Serum and CSF samples from 106 PD patients (early and late) and 16 controls (**Table 2**). Twenty-eight individuals from cohort #1 were also part of cohort #2, however, other aliquots of the biomaterials were used. Furthermore, 26 additional serum control samples remaining from cohort #1 were included in the 40-plex mesoscale analysis for cohort #2 (**Suppl. Table 1**).

Neuronal markers in CSF

CSF levels of total human Tau (h-Tau) and phosphorylated Tau (p-Tau) (phosphorylation of Tau at threonine 181) were measured using commercially available ELISA kit (Innotest; Innogenetics, Ghent, Belgium). Total α -syn values were analyzed at Analytic Jena, using an ELISA (Mono-Kit, Analytic Jena Roboscreen GmbH, Leipzig, Germany). A β_{1-42} (A β_{42}) in CSF was measured with a commercially available ELISA kit (Innotest®; Fujirebio Germany GmbH, Hannover, Germany). All measurements were performed by board-certified laboratory technicians who were blinded to clinical data.

sCD163 measurements

Total sCD163 was measured in serum and in CSF using an in-house ELISA as previously described [53, 57]. The % of intrathecally produced sCD163 was calculated as follows: The CSF concentration of sCD163 derived from the circulation was calculated based on the CSF/serum albumin quotient: serum sCD163 x (CSF albumin/serum albumin concentration). The sCD163 produced intrathecally was calculated by subtracting the above value from the absolute CSF concentration [18].

40-plex mesoscale

MSD MULTI-SPOT Assay System (Mesoscale) was used to measure 40 different soluble molecules in serum and CSF on cohort #2 (and additional serum controls from cohort #1, see **Fig. 1** and **Table 2**), using Human Biomarker 40-plex kit following manufacturer's best practices instructions. All samples were used after a single freezing cycle, except for the additional healthy serum controls from cohort #1 (**Fig. 1/ Table 2**), which had been thawed once before, and were only included in assays (**Suppl. Table 1**) where we had validated that an additional freeze/thawing-cycle did not affect the measurements. MSD plates were run on MESO QuickPlex SQ120 (MSD) with MSD Discovery Workbench software. For each plate and panel, the upper and lower limit of quantification (ULOQ & LLOQ) or detection (ULOD & LLOD) were noted. No measurements were $>ULOD$, assays with

1 samples below LLOD were excluded (**Suppl. Table 1**), and ULOQ or LLOQ are shown on relevant graphs. For
2 more details, see supplementary information.

3

4 ***In vitro analysis of α -synuclein uptake and binding***

5 THP-1 and BV-2 cells were grown in 75cm² flasks in culture media consisting of 2mM L-Glutamine, 10% FBS
6 in RPMI 1640. For the THP-1 experiment, 80,000 cells per well were plated onto 24-well plates and treated with
7 100nM PMA (Phorbol myristate acetate, InvivoGen, France) for 72h for macrophage-differentiation and
8 attachment. For the BV-2 experiment, 70,000 cells per well were plated onto 24-well plates and cultured for 24 h
9 before α -syn treatment.

10 The plates with differentiated THP-1 macrophage-like cells or BV-2 murine microglia cells were placed on ice for
11 15min before adding ¹²⁵I- α -syn fibrils (50 ng/ml, see supplementary info for details) onto the cells, either with
12 PBS as vehicle control, sCD163 (5 μ g/ml, see supplementary info for details), or added after 30min of pre-treatment
13 with sCD163 (5 μ g/ml) at 37°C. To evaluate α -syn internalization, the plates were placed into a 37°C water bath
14 to allow uptake of the fibrils for 5, 15 or 45min, after which the plates were returned on ice. The cells were washed
15 with 500 μ l ice-cold PBS twice for 5min and next, to remove the bound preformed fibrils from the cell surface,
16 they were washed with 500 μ l acid wash (0.2M acetic acid, 0.5M NaCl, pH 2.8) for 5min. Afterwards, the cells
17 were lysed by adding 500 μ l 1M NaOH to each well and collected into appropriate counting vials. Radioactive
18 counts per minute (CPM) were counted in the Wizard 3" 1480 Automatic Gamma counter (Wallac/LKB). For
19 assessment of surface binding, the plates were kept on ice for 1h, washed with 500 μ l ice-cold PBS twice for 5min,
20 lysed, and collected with 500 μ l of 1M NaOH into vials for counting. Values were normalized to α -syn average
21 counts. Results are given in percentage of internalization/surface binding.

22

23 ***Microscale Thermophoresis for assessment of sCD163- α -synuclein interaction***

24 Evaluation of protein binding through the Microscale Thermophoresis technique was performed by labeling human
25 His-Tag sCD163 (target protein) with RED-tris-NTA 647 2nd generation fluorescent dye (excitation:650nm;
26 emission: 670nm) using the Monolith His-Tag labeling Kit RED-tris-NTA 2nd generation (NanoTemper
27 Technologies, Cat Nr:L018). Fluorescently labeled sCD163 was used at a concentration of 60nM. For binding
28 evaluation, a 16x dilution series (1:1) was performed on 20 μ M human α -syn (ligand) reaching 0.61nM
29 concentration. The MST buffer used contained 10mM HEPES, 150mM NaCl, 0.05% Tween, 0.1%BSA, and 3
30 different concentrations of CaCl₂ for testing calcium-dependent binding. Fluorescent target and ligand were mixed
31 (1:1) and samples were loaded in Monolith NT.115 Premium Capillaries (NanoTemper Technologies, Cat Nr:
32 K025) and measured in the Monolith NT.115 instrument (100% LED/excitation power and medium MST power).
33 The experiment was repeated three times for each calcium condition. Dose-response values were evaluated in the
34 MO Affinity analysis software and compared between conditions.

35

36 ***Statistical analyses***

37 GraphPad Prism V7, JMP 14, and STATA v15 IC were used for statistical analyses and data plotting. For gender-
38 and group differences as well as correlations, the use of parametric vs. non-parametric tests were determined by

1 testing Gaussian normality distribution with a D'Agostino-Pearson omnibus normality test, followed by unpaired
2 t test (or Mann-Whitney), 1-way ANOVA (or Kruskal-Wallis test) with Tukey's (or Dunn's) multiple comparisons
3 test, and Pearson (or Spearman) correlation coefficient calculations as appropriate.
4 Simple linear and multiple linear regression were calculated to predict clinical scores or biomarkers for PD patients
5 based on CSF-sCD163 values alone or adjusted for age and/or disease duration. For the analysis of correlations
6 between sCD163 and the Multiplex markers, Bonferroni corrections in the p-values were used.
7 In cohort #2: Odds ratios of single CSF or serum biomarkers effect on PD diagnosis (PD vs. HC) were estimated
8 using logistic regression; main effect of PD progression (UPDRS III, MoCA, Mini Mental (MMSE (O)), or MMSE
9 original plus converted from MoCA (MMSE O+C)) were calculated using linear regression. The main effect of
10 single biomarkers was plotted as forest plots. For both PD diagnosis and PD progression, prediction of combined
11 effect of biomarkers calculated using three stepwise forward prediction models: m1) probability of entry is 0.1,
12 probability of removal is 0.2; m2) probability of entry is 0.05, probability of removal is 0.1; and m3) probability
13 of entry is 0.1, probability of removal is 0.2, sCD163 forced to be included. The three models were compared
14 using AIC and BIC (probabilistic model selection criterion). For the three final models on PD diagnosis, a
15 classification table was calculated and Hosmer-Lemeshow goodness of fit was conducted (χ^2). For each model of
16 PD progression (UPDRS III, MoCA, Mini Mental, or MMSE O+C), the adjusted R squares were calculated and
17 the observed scores were graphed against their fitted value.
18 For *in vitro* experiments, the use of a Two-way ANOVA was determined after testing Gaussian normality
19 distribution with a Shapiro-Wilk normality test followed by Tukey's multiple comparisons test.

20

21 RESULTS

22

23 *Screening of sCD163 as a (cognitive) progression biomarker (cohort #1)*

24 Our and others' previous studies in rodents [25, 79] and humans [56] suggest that CD163⁺ cell populations might
25 have a relevant role in PD. In addition, multiple studies have shown that sCD163 can be used as a valuable
26 biomarker on diseases with an important immune component [15]. Thus, we aimed to investigate the potential of
27 sCD163 as a CSF and serum biomarker for PD diagnosis and progression in a cohort of 109 PD patients and 44
28 healthy controls (HCs) with similar gender and age distribution (cohort #1) (**Fig. 1; Table 1**). Our analysis shows
29 that CSF-sCD163 was elevated in late PD (**Fig. 2A**), with no gender discrepancies. In serum we observed a gender
30 and treatment effect in the levels of sCD163 (not shown), thus we separated the data by gender and to eliminate
31 the treatment variable we analyzed only treated PD patients samples. The analysis showed that serum sCD163
32 levels were elevated in late female PD patients (vs. early), but not in male PD patients (**Fig. 2B**). To confirm that
33 the changes in sCD163 in CSF were not a simple leakage from serum we calculated the amount of sCD163
34 intrathecally produced and that derived from serum, using as reference the ratio albumin CSF/serum (when available)
35 as previously described [18]. We did not see any significant difference in the amount sCD163 in CSF of serum
36 origin (not shown); however, the sCD163 produced intrathecally was higher in late PD (0.0739 ± 0.037) vs. early

1 PD (0.0601 ± 0.019 , $p=0.03$), thus confirming that the increase observed was due to elevated CD163 shedding
2 within the brain.

3 Interestingly, for the PD patients, sCD163 in CSF correlated positively with levels of well-characterized
4 neurodegenerative markers (α -syn, h-Tau, and p-Tau) in CSF even after compensating for age and disease duration
5 (**Fig. 2C-E, Suppl. Table 2**). Since these biomarkers have been previously related to symptomatology in PD, we
6 analyzed putative correlations between sCD163 and clinical scores. Remarkably, CSF-sCD163 was negatively
7 correlated with cognitive progression measured by both the MoCA and the MMSE scores in the PD patients (also
8 to some degree when separated by gender or early/late disease status) (**Fig. 2F-H, Table 1, Suppl. Table 3**).
9 Similarly, serum-sCD163 did also correlate positively with the neuronal markers from CSF (α -syn, h-Tau (only
10 trending), and p-Tau; **Fig. 2I-K**), even after compensation for covariance, however, sCD163 in serum did not
11 correlate with the cognitive scores (data not shown). Neither serum- nor CSF-sCD163 did correlate with the H&Y,
12 UPDRS III, or LEDD after compensating for co-variables (data not shown).

13

14 ***Confirmation of sCD163 as a disease biomarker (cohort #2)***

15 Based on the central finding of sCD163 increasing during disease and the correlation between CSF-sCD163 and
16 cognitive PD problems, we aimed to confirm these findings in a second cohort (#2) (**Fig. 1, Table 2**). Indeed, we
17 corroborated an increase of CSF-sCD163 in late PD in the cohort #2 (**Fig. 3A**). Moreover, the estimated amount
18 of sCD163 in CSF with serum origin was similar across groups (not shown), while the sCD163 intrathecally
19 produced was increased in late PD (0.109 ± 0.047) vs. early PD (0.071 ± 0.018 , $p=0.004$) and vs. healthy control
20 (0.074 ± 0.023 , $p=0.02$), suggesting an increased sCD163 production in brain. We confirmed as well, the gender
21 difference observed for serum-sCD163 in the first cohort, with an increase in serum-sCD163 for females only
22 (analyzing only treated PD patients, **Fig. 3B**).

23 In agreement with observations from cohort #1, correlations of CSF-sCD163 with the PD-related CSF markers (α -
24 syn, h-Tau, and p-Tau) were found as well in cohort #2 (**Fig. 3C-E**). Linear regressions between CSF-sCD163
25 and these markers remained significant even when age of visit was accounted for (not shown). Moreover, in cohort
26 #2 sCD163 in CSF was significantly correlated to levels of Abeta42 (**Fig. 3F**). The association between serum-
27 sCD163 and CSF biomarkers, showed also similar pattern, with significant correlation to α -syn and p-Tau, a trend
28 with h-Tau and no correlation with Abeta42 (**Fig. 3J-M**).

29 Of importance, this was also true for cognitive scores, which decreased while sCD163 increased (**Fig. 3G-I, Suppl.**
30 **Table 4**). Since we corroborated the negative correlations between cognitive scores and CSF-sCD163, we
31 examined whether such correlation would persist when adjusted for covariance by comparing simple linear and
32 multiple linear regressions (**Suppl. Table 5&6**). Importantly, when adjusting CSF-sCD163 for age at PD onset or
33 time with PD diagnosis, the slopes were still significantly different from zero (thus negatively correlated) for both
34 scores (MoCA or MMSE O+C). As expected, age was influencing the cognition scores and sCD163, however,
35 CSF-sCD163 concentration still associated significantly with the cognitive decline. In fact, a significant p value
36 remained for CSF-sCD163 even when adjusting for age at visit alone, or in combination with age at onset or
37 disease duration for the MMSE O+C score (with most available data points). Thus, an increase in CD163 of
38 0.1mg/L corresponded to a decline of ~3 in the MMSE O+C score, however, when adjusting for both age at visit

1 and disease duration, the decline would only be expected to be ~1.8 (**Suppl. Table 5**). This demonstrates that
2 CD163 associates with cognitive decline even when patient age and disease duration are considered.

3 4 ***Screening for other CSF biomarkers (cohort #2)***

5 sCD163 is considered a marker for monocyte/macrophage immune activation [51], thus we decided to analyze 40
6 biomarkers related to the immune system and angiogenesis/vascular permeability using validated (V-plex)
7 immunoassays (mesoscale, MSD) in both serum and CSF. Only assays with less than three measurements below
8 LLOD were considered reliable and further analyzed (**Suppl. Table 1**). In CSF, we observed that out of the 16
9 reliable assays, 11 biomarkers showed PD-related changes (**Fig. 4**). Vascular cell adhesion protein 1 (VCAM-1;
10 CD106), Intercellular Adhesion Molecule 1 (ICAM-1; CD54), interleukin (IL)-8, serum amyloid A protein (SAA)
11 (an acute phase protein), and placenta growth factor (PIGF) were all increased in PD patients (**Fig. 4A-D; F**).
12 Additionally, another acute phase protein: The C-reactive protein (CRP) also showed a clear trend to increase in
13 PD patients ($p=0.059$, **Fig. 4E**).

14 Interestingly, some of the biomarkers assayed showed a progressive change during PD: IL-15 and Vascular
15 endothelial growth factor (VEGF)-D were increased in late PD patients compared to healthy controls, but also
16 when compared to early PD (**Fig. 4G-H**). Additionally, other markers were different among patients receiving L-
17 DOPA and those that were non-treated: Monocyte chemoattractant protein-1 (MCP-1; CCL2) (only in male
18 patients) and macrophage inflammatory protein-1 β (MIP-1 β ; CCL4) levels showed a decreased in treated (T) vs.
19 untreated (UT) PD patients (**Fig. 4I-J**). An opposite trend was observed for Fms Related Tyrosine Kinase 1 (FLT1;
20 VEGFR1) (**Fig. 4K**). No PD-related changes were observed in the remaining four CSF biomarkers with values
21 $>$ LLOD (**Suppl. Fig. 1**). In sum, our data demonstrate increased monocyte-driven inflammation and indicate
22 increased blood-brain-barrier (BBB) permeability in PD patients.

23 24 ***Screening for other serum biomarkers (cohort #2)***

25 We next aimed to investigate the same biomarker panel in serum samples from cohort #2. Surprisingly, with 27
26 reliably measured biomarkers, only nine showed PD-related changes (**Fig. 5**). However, in agreement with our
27 CSF observations, VCAM-1 was significantly increased in PD patient's serum (**Fig. 5A**), while VEGF-C C was
28 significantly decreased (**Fig. 5B**). A trend to increase during PD was also found for ICAM-1, CRP, IL-12/IL-
29 23p40, and IL-6 (in females) (**Fig. 5C-F**). As showed in CSF, some disease-progression changes were also
30 observed: IL-15 and VEGF-D were both increased in late PD serum samples compared to early PD patients (**Fig.**
31 **5G-H**). No PD-related changes were observed in the remaining 18 serum biomarkers with values $>$ LLOD (**Suppl.**
32 **Fig. 2**).

33 34 ***Correlation between multiple CSF and serum biomarkers with sCD163 (cohort #2)***

35 To investigate any association with the newly discovered sCD163 PD biomarker and the other immune molecules
36 with PD-related changes, we investigated the presence of correlations of sCD163 with the 40-plex in CSF (**Fig.**
37 **6A-B**) and serum (**Fig. 6C-D**). We also decided to explore the associations to the biomarker panel separated by

1 gender in their serum samples due to our *a priori* finding of sCD163 being gender-dependent in serum (**Suppl.**
2 **Fig. 3**).

3 Our analysis showed that CSF-sCD163 was positively correlated with several biomarkers in CSF; both when
4 examining all PD patients and by separating them by early- and late disease status. The strongest significant
5 correlations for CSF-sCD163 observed at all disease stages were those seen among IL-15 (r 0.72, all PD), ICAM-
6 1 (r 0.63, all PD), VCAM-1 (r 0.61, all PD), and Flt-1 (r 0.51, all PD). Several chemokines were also strongly
7 correlated with CSF-sCD163 in late PD: IP-10 (CXCL10, r 0.52), MIP-1B (CCL4, r 0.51), and MCP-1 (CCL2, r
8 0.44) (**Fig. 6B**).

9 In serum, the sCD163 correlations were weaker and fewer (**Fig. 6D**): serum-sCD163 was correlated with IL-6 (at
10 all disease stages; best fit with all PD, r 0.39), ICAM-1 (r 0.34, all PD), and SAA (r 0.35, all PD). Other biomarkers
11 were correlated to serum-sCD163 especially at late PD such as TNF- α (r 0.55), IL-12/IL-23p (r 0.47), VCAM-1
12 (r 0.57), and CRP (r 0.41). Remarkably, the strong correlation between sCD163 and IL-15 observed in CSF was
13 absent in serum. Overall, our results demonstrate that the monocyte/macrophage-specific serum and CSF
14 biomarker, sCD163, associates not only to cognitive decline but also to well-described inflammation markers.

15

16 ***Cognition related biomarkers (cohort #2)***

17 Accordingly, we aimed to assess whether our previously described association with sCD163 and cognition was
18 unique for this immune biomarker, thus we investigated correlations between MMSE O+C and all other
19 investigated reliable biomarkers. Besides sCD163, only IL-15 of all the investigated CSF biomarkers had a strong
20 negative correlation (in all PD stages) with MMSE (O+C) and a significant linear regression (**Fig. 7A-C**), as
21 expected since sCD163 and IL-15 in CSF, were strongly correlated (**Fig. 7E**). Interestingly, IL-15 was the only
22 serum biomarker found to negatively correlate and have a significant linear regression with MMSE (O+C) (**Fig.**
23 **7D**). Other CSF markers also showed a significant negative correlation and a significant linear regression (not
24 shown) with cognitive scores MMSE (O+C), although only in late PD, such as IL-7 (r -0.48) CCL2 (r -0.33), IL-
25 8 (r -0.32), and PIGF (r -0.31). No biomarker was found to correlate with the motor deficiency/impairment, except
26 for serum-VEGF-A, which had a significant negative correlation and significant linear regression with UPDRS III
27 scores (**Fig. 7F**). Critically, sCD163 shows unique qualities being cell type-specific and having associations with
28 BBB leakage, immune activation, and cognition.

29

30 ***Single biomarkers as a predictor of progression (cohort # 2)***

31 In order to investigate the serum and CSF biomarkers effect on PD diagnosis (PD vs. HC) and PD progression
32 (UPDRS III, MoCA, MMSE, and MMSE original (O) plus converted from MoCA (MMSE O+C)) we used logistic
33 and linear regression to estimate the odds ratio and regression slopes, respectively. The main effect on PD diagnosis
34 and progression of the single (re-scaled) biomarkers in serum and CSF were plotted as forest plots (**Suppl. Fig. 4-**
35 **5**). For serum biomarkers ability to predict PD diagnosis, VCAM-1, IL-10, and sCD163 had significant p values;
36 for the ability to predict progression by UPDRS III, p values were significant for VEGF-A and Flt-1; progression
37 by MoCA, p values were significant for SAA, PIGF, IL-8, IL-15, and CRP; progression by MMSE O, p values
38 were significant for SAA, IL-8, ICAM-1, Eotaxin-3, and CRP; progression by MMSE O+C was the same as for

1 MMSE O plus IL-15 (**Suppl. Fig. 4**). For CSF biomarkers ability to predict PD diagnosis, VEGF-D, IL-8, α -syn ,
2 and sCD163 had significant p values; for the ability to predict progression by UPDRS III, none of the measured
3 CSF biomarkers stood out; by MoCA, VCAM-1, SAA, PIGF, IL-7, IL-15, p-Tau, h-Tau, α -syn , and sCD163 had
4 significant p values; by MMSE O, SAA, IL-6, IL-15, and sCD163 had significant p values; For MMSE O+C,
5 VCAM-1, SAA, MIP-1B, IL-7, IL-15, and sCD163 had significant p values (**Suppl. Fig. 5**). Thus, both serum-
6 and CSF-sCD163 appear to be good predictors for PD and cognitive decline.

7 8 ***sCD163, a predictor of progression in various statistical models (cohort# 2)***

9 With sCD163's apparent ability to singlehanded predict PD diagnosis (both in serum and in CSF) and cognition
10 by all cognitive scores in CSF, our data supported sCD163 as a valid biomarker to predict both PD diagnosis and
11 progression with respect to cognition. However, sCD163 is also dysregulated in other diseases with an
12 inflammatory component, so a combined biomarker panel might be necessary to distinguish (risk of) PD from
13 other diagnoses, or progression from general aging. Therefore, we next aimed to model a combination of biomarker
14 panels to follow PD diagnosis and progression (or possible changes after therapeutic intervention) using three
15 variants of stepwise forward modeling with variable probability for biomarkers to enter the model; and with
16 sCD163 being forced to be included in model (m) 3 (**Suppl. Table 7&8**). For each prediction score, the best model
17 of serum and CSF biomarkers were selected and plotted with goodness-of-fit (**Fig. 8&9**). For serum, m1 was the
18 strongest models to predict UPDRS III (**Fig. 8A**), MMSE O (**Fig. 8C**), and MMSE O+C (**Fig. 8D**), whereas the
19 m3 including serum-sCD163 (with IL-15, CRP, MCP-1 PIGF, and IL-7) were best fitted to predict MoCA and
20 overall had the highest R square (0.29) (**Fig. 8B**). Likewise for CSF, m3 for the MoCA including CSF-sCD163
21 (with p-Tau, IL-7, and IL-8) had the highest R square (0.32) (**Fig. 9B**), whereas none of the calculated CSF models
22 seemed to fit for UPDRS III, MMSE O, or MMSE O+C (R square all <0.1)(**Fig. 9A;C;D**). Taken together, sCD163
23 in both serum and CSF holds a good potential as a single biomarker or an essential part of a biomarker panel to
24 predict PD progression (and diagnosis) by measurement of biofluids.

25 26 ***sCD163 as a potentiator of α -synuclein fibril internalization in myeloid cells***

27 Since our data showed a progressive increase of sCD163 during disease and the levels of the protein were
28 positively correlated to α -syn in CSF, we sought to analyze any possible interaction by a direct binding using
29 Microscale Thermophoresis. As CD163 binding to hemoglobin-haptoglobin complexes has been shown to be
30 calcium-dependent [47], we evaluated three different calcium concentrations to test sCD163- α -syn interaction. No
31 significant signs of co-interaction were observed in any of the conditions assayed (**Suppl. Fig. 6**).

32 We then speculated whether sCD163 had any effect on the myeloid response to α -syn. Since one of the relevant
33 functions of myeloid cells in PD is the clearance of α -syn, we aimed to evaluate the effect of sCD163 on α -syn
34 uptake. To do so, we chose two cell lines: Human monocytic THP-1 cells differentiated to a macrophage-like stage
35 and mouse microglia BV-2 cells, in order to obtain information from the two main myeloid cells involved in PD.
36 Cells were incubated with radiolabeled α -syn fibrils alone or with sCD163 as co- or pre-treatment (30min) (**Fig.**
37 **10A**). After 5min, THP-1 cells showed increased α -syn internalization when co-treated with sCD163 (+15%) or
38 pre-treated with sCD163 (+10%) compared to α -syn alone (**Fig. 10B**). While in the BV-2 cells, the uptake of α -

1 syn increased only when the cells were pre-treated with sCD163: after 5min (+53%) and 15min, (+35%) compared
2 to α -syn alone. Interestingly, in the BV-2 cells with the co-incubation approach, α -syn uptake was only increased
3 after 45min (+ 15%), with no changes at earlier time-points (**Fig. 10C**). This might suggest that the effect on
4 microglia could require certain intracellular machinery, hence the delay, versus the more rapid effect in the
5 monocytes. However, we cannot discard the possibility that the differences are only due to species disparities.
6 Taken together, these results indicate that CD163 has an α -syn uptake-related function, which might have
7 consequences in the PD-progression.

9 DISCUSSION

11 Genetic data suggest that the inflammatory component in PD is mainly driven by the myeloid compartment of the
12 immune system, which includes not only microglia in the brain, but also monocyte-derived cells [65]. Moreover,
13 recent data from gene expression analysis on monocytes show that PD-associated genetic risk factors influence
14 innate immune mechanisms [44]. Numerous studies have reported alterations on immune biomarkers in CSF and
15 serum that associate with symptoms in PD patients [36, 64]. However, it is unclear, which immune cells are
16 specifically responsible for the changes in those biomarkers; since most of these cytokines or chemokines can be
17 produced by a variety of immune cells, or even neurons or glia in the brain. Here, we investigate a
18 monocyte/macrophage-specific biomarker: sCD163, the soluble form of the receptor CD163 [15]. Our data shows
19 that the CSF-sCD163 increases as PD progresses together with a parallel increase in well-accepted disease
20 biomarkers: α -syn, h-Tau, and p-Tau. Moreover, levels of sCD163 were inversely correlated to cognitive scores
21 MMSE and MOCA, with higher sCD163 indicating lower cognitive capacity. sCD163 was also increased in serum,
22 although only in female PD patients, suggesting a gender distinctive response of the monocytic immune system.
23 These changes in sCD163 levels are indicative of a monocytic activation occurring in parallel to variations in
24 several cytokines, chemokines, and angiogenic factors. These changes were different in CSF vs. serum, supporting
25 a distinctive immune profile in the brain and periphery that in turn, correlated mostly with cognitive scores.
26 Statistical analysis confirmed sCD163 as a good predictor of PD and cognitive capacity. Additionally, we describe
27 mathematical models that could be used for addressing PD cognition by MoCA using sCD163 in combination with
28 IL-15, CRP, MCP-1/CCL2, PIGF, and IL-7 in serum; and p-Tau, IL-7, and IL-8 in CSF. Interestingly, our *in vitro*
29 study, suggest that sCD163 might enhance α -syn uptake by myeloid cells, thus participating in the clearance of α -
30 syn. Accordingly, our data supports sCD163 as a potential biomarker in PD and corroborates a role for monocytes
31 both in peripheral and brain immune responses during PD that could have direct consequences in the handling of
32 α -syn.

33 Our analysis of the two PD cohorts showed that sCD163 is increased in biofluids in PD patients. Constitutive
34 shedding of CD163 occurs from healthy human monocytes/macrophages, by the metalloproteinase ADAM17 [14]
35 (which also cleaves VCAM-1 and ICAM-1 [70, 81]). Hence, in our study, we show that these molecules were also
36 increased in PD patients and strongly correlated to sCD163 in both serum and CSF. ADAM17 activity can be
37 enhanced by inflammatory signals, such as TLR2/4 activation, therefore, plasma levels of sCD163 can be related
38 to monocyte/macrophage activation. Accordingly, increased sCD163 plasma level is associated with the severity

1 of various diseases with an inflammatory component, including multiple sclerosis [15, 75]. Interestingly, two
2 diseases genetically related to PD also show increased sCD163: Crohn's syndrome [12] and Gaucher disease [52],
3 confirming a shared common myeloid disease mechanism. Although the inflammatory signals that might lead to
4 this shedding in PD are yet unknown, it is tempting to speculate that α -syn might contribute to this event. α -syn
5 has been shown to act as a DAMP interacting with TLR2 and TLR4 [16]. Furthermore, some studies have shown
6 increased levels of these receptors in monocytes from PD patients [23, 86]. A recent article reports increased levels
7 of endotoxin in PD patients biofluids, supporting a role for infections in PD, which could account, at least partially,
8 for some monocytic (TLR) activation and the shedding of sCD163 [86].

9 Our data showed an increase of the sCD163 with time from onset, supporting a progressive increase in the
10 involvement of the CD163⁺ cells (monocytic cells) in the disease. This higher sCD163 level in CSF was not a
11 simple leakage from serum, since the estimated amount of sCD163 produced intrathecally was indeed elevated in
12 PD. The sCD163 found in CSF can be produced by CD163-expressing meningeal, choroid plexus, and perivascular
13 macrophages, but also by infiltrating macrophages in the brain. Indeed, we and others have observed an increase
14 in brain infiltration of CD163⁺ cells in rodent models of PD [25, 79] and an increase in CD163⁺ cells have been
15 seen in *post mortem* brains of Alzheimer and PD patients [62]. Therefore, this sCD163 could, at least partially, be
16 produced by infiltrating CD163⁺ monocytes and their subsequent local activation. Additionally, our data showed
17 that sCD163 in CSF was correlated with markers of angiogenesis and related to monocytes and lymphocytes
18 infiltration, such as ICAM-1, VCAM-1, PIGF, and IL-8.

19 In contrast to the observations in CSF, sCD163 levels in serum were only significantly changed in female PD
20 patients. To our knowledge, only urate has been proposed as a PD biomarker with gender differences [72]. Gender-
21 dependent differences in the immune system have long been acknowledged [38]. Similarly, PD has a gender bias
22 and immune-related gender differences have already been shown in PD patients [7]. Recent rodent studies also
23 suggest that microglia differ between genders, with the female microglia being less pro-inflammatory [84]. The
24 gender-specific changes in serum-sCD163 found in the present exploratory study, could be related to the
25 differences in PD in female vs. males, with respect to incidence [82], but also to the symptomatic presentation of
26 the disease [19]. This is also supported by our previous study that showed a gender-dependent variation in the
27 response of PD blood-derived monocytes *in vitro* [57]. Therefore, the observed gender-differences could be a result
28 of gender-specific immune divergences that could have relevant consequences in the risk and presentation of PD
29 in each gender.

30 We observed that sCD163 was strongly correlated to disease biomarkers α -syn, h-Tau, and p-Tau in CSF. These
31 biomarkers have been associated with PD diagnosis, severity of clinical symptoms and with cognition [30, 34].
32 Moreover, genetic variants of Tau have been associated with an increased risk of suffering from cognitive
33 symptoms in PD [10]. We found that, although sCD163 did not correlate to motor scores, sCD163 inversely
34 correlated with cognitive scores (MoCA and MMSE), thus suggesting higher monocyte activation in parallel with
35 the development of cognitive problems, supporting a driving role for the immune response in the cognitive
36 component of PD. This is in agreement with imaging studies showing that cognitive scores correlated with
37 increased microglia activation (PK11195 PET) and reduced glucose metabolism in the cortex [13]. Furthermore,
38 peripheral immune changes in monocytes seem more relevant in those patients with higher risk to develop

1 cognitive problems [86]. Altogether, our data support a highly relevant role for the monocytes in the cognitive
2 component of PD.

3 Our multiplex analysis of soluble markers showed increases in several immune-related markers in PD patients
4 without significant gender differences, (except in serum IL-6). Markers for angiogenesis, ICAM-1 and VCAM-1,
5 were consistently found elevated in PD in both biofluids. They are both expressed by cytokine activated endothelial
6 cells, astrocytes, and microglia [42, 43]; and are regulators of lymphocytes extravasation across the BBB [74].
7 Interestingly, α -syn induces ICAM-1 release from astrocytes [37] and both ICAM-1 and its receptor are increased
8 in PD brains and models of PD, related to infiltration of leucocytes [48, 69]. VCAM-1 is increased in serum of PD
9 patients with a concomitant decrease of its receptor, VLA4, in T cells and NK cells [28, 61]. Furthermore, PIGF,
10 a molecule related to monocyte infiltration in brain, was, similar to another study, increased in PD CSF [32].
11 Supporting the role of (lympho-) angiogenesis/BBB-related immune cell-infiltration in PD, VEGF-D progressively
12 increased during disease in serum and was increased in CSF compared to healthy controls levels [73]. On the
13 contrary, in serum, we found a decrease of the family related VEGF-C, which interacts with the same receptors
14 than VEGF-D, although with different affinities and effects [11]. Interestingly, VEGF-D, but not VEGF-C has
15 effects in neuronal dendritic arborization and cognition [27]. We also described an increase in IL-8 for PD patients,
16 a macrophage-secreted chemokine known to recruit neutrophils and monocytes and promote angiogenesis [39].
17 PD patients had also increased IL-15, a cytokine produced by multiple cell types including monocytes, neurons,
18 and astrocytes [59]. IL-15 induces BBB permeability [76], DC-differentiation (i.e. antigen-presenting cells, which
19 also express CD163); thus, enhancing T cell activation and survival [60]. Further confirming the inflammation,
20 we also showed increases in acute phase proteins (SAA and CRP). Increased SAA has been related to PD with
21 dementia [24]. Higher CRP levels have been correlated to severe motor impairment, poor psychological well-
22 being, and poor sleep in PD patients [67] and it has been suggested not only as a prognostic/risk marker [68] but
23 also as a predictor of cognitive decline [50]. Overall, the profile found in the PD patients, was suggestive of an
24 active immune response involving both adaptive and innate signals, with a permissive environment for the
25 recruitment of immune cells to the brain.

26 The levels of sCD163 correlated significantly with some of these soluble markers measured in CSF and serum.
27 The strongest association was between sCD163 and IL-15, which accordingly, also correlated to cognition both in
28 CSF and in serum. Interestingly, IL-15 receptor is expressed throughout the brain and it has been shown that IL-
29 15 has a significant role in mood and memory [59]. sCD163 was also strongly correlated with (soluble) ICAM-1
30 and VCAM-1, which as mentioned, are shed by the same enzyme ADAM17. As already reported for rheumatoid
31 arthritis [33], we found a significant but weaker association of sCD163, both in CSF and serum, with IL-12/IL-
32 23p40, which is produced by antigen-presenting cells upon TLR activation and is involved in Th1/Th17
33 differentiation of T cells [46]. Accordingly, IL-12/IL-23p40 has also been found increased/important in PD
34 patients and Crohn's disease [7, 85]. In CSF, a significant but weak correlation was seen between sCD163 and
35 CCL2, CCL4 as well as CXCL10; all chemokines involved in monocyte recruitment. CCL2 correlates PD
36 symptoms [67] and together with CCL4 can be useful for discrimination of clinical subtypes [8, 9]. CXCL10 was
37 previously associated with cognition in PD [66]. In serum, however, sCD163 was correlated to pro-inflammatory
38 cytokines such as TNF- α and IL-6, as well as to the acute phase proteins CRP and SAA. Therefore, CSF-sCD163
39 correlated with immune molecules associated with endothelial cells, infiltration and to activation of B and T cells

1 in the PD patients, further suggesting activation of both adaptive and innate immune system and to recruitment of
2 leucocytes and monocytes to sites of inflammation in the brain. While serum-sCD163 was associated with pro-
3 inflammatory and acute phase proteins, suggesting a higher relation to inflammatory events.
4 The function of sCD163 is still unclear, but it has been shown to potentiate IL-10 expression in allergen-activated
5 PBMCs [5]. In addition, sCD163 seems to inhibit T cell activation and proliferation [58]. It is known that CD163
6 is in charge of the uptake of the hemoglobin-haptoglobin complex [40] and ADAMTS13 [83]. In order to assess
7 whether α -syn could be a cognate for CD163, we did MST to assess co-interaction. For this, we used sCD163,
8 which constitutes almost the entire extracellular portion of the receptor and it has been previously approached for
9 similar questions [54]. Our analysis showed no interaction between the two proteins, thus suggesting α -syn is not
10 a direct ligand for CD163 (although a possible co-receptor interaction cannot be excluded). Thus, we investigated
11 whether sCD163 could have any other functional effect on myeloid cells that might be relevant in PD. The result
12 from our *in vitro* study on sCD163-associated α -syn-uptake suggests that sCD163 induces an increase in the
13 capacity of the monocytes and microglia cells to uptake extracellular α -syn. *In vitro*, NF- κ B stimulation of T cells
14 induced internalization of sCD163, which then binds myosin [80] a molecule involved in phagocytosis [2].
15 Therefore, sCD163 might induce intracellular pathways that would influence the cellular response to α -syn.
16 Indeed, our data indicate that sCD163 required certain time to exert its effect on BV-2 cells, supporting induction
17 of certain cascades. Further investigation is required to fully understand the effects on α -syn uptake mediated by
18 this protein and its consequences in the myeloid response during PD.
19 In conclusion, our data show a PD-related increase in sCD163 in CSF and in serum (only in females), supporting
20 a role for monocytes in the immune response concomitant with the disease. The increase in sCD163 paralleled
21 those of accepted neuronal markers, therefore relating immune and neuronal events. Moreover, higher levels of
22 sCD163 were associated with poor cognitive scores, indicative of a relevant role for the monocytes and the immune
23 process in cognitive decline. The CSF-sCD163 increase was associated with immune biomarkers suggestive of a
24 permissive BBB and the activation of adaptive immunity. Moreover, our *in vitro* studies suggest that sCD163 may
25 have an effect on the capacity of the myeloid cells, such as monocytes and microglia, to uptake α -syn, further
26 indicative of a relevant role for the disease progression. Our work reveals sCD163 as a promising biomarker in
27 PD.
28

1 **ACKNOWLEDGEMENTS**

2 We acknowledge the invaluable technical help provided by Gitte Ulbjerg Toft (Department of Biomedicine,
3 Aarhus University); and by Helle Hauser Ryom (Department of Clinical Biochemistry, Aarhus University
4 Hospital). We are grateful to Prof Dr. Mart Saarna (Helsinki University), for his scientific support and Prof Poul
5 Henning Jensen (Aarhus University) for kindly providing the human α -syn protein. Samples were obtained from
6 the Neuro-Biobank of the University of Tuebingen, Germany ([https://www.hih-tuebingen.de/en/about-](https://www.hih-tuebingen.de/en/about-us/core-facilities/biobank/)
7 [us/core-facilities/biobank/](https://www.hih-tuebingen.de/en/about-us/core-facilities/biobank/)), which is supported by the local University, the Hertie Institute and the DZNE.

8
9 **AUTHOR CONTRIBUTIONS**

10 Concept development and designed the study: SKN, SAF, MRR. Performed experiments: SKN, SAF, DH.
11 Analysed the data: SKN, SAF, KS, MRR. Drafted the manuscript: SKN, MRR. Coordinated sample selection and
12 collected Biobank archive info: CS. Wrote jointly the final version of the manuscript: SAF, SKN, MRR. All
13 authors critically revised the manuscript and approved the final version.

14
15 **FINANCIAL DISCLOSURE**

16 The authors declare no conflict of interest. Funding support for the research covered on this article was provided
17 from the Michael J. Fox Foundation (MRR), the Bjarne Saxhof Fund administered through the Danish Parkinson's
18 Foundation (MRR), the Aarhus University Forskningsfond AU IDEAS center NEURODIN (MRR) and the Novo
19 Nordisk Foundation (DEO, NNF17OC0028806). SAF is funded by a PhD fellowship from the PhD School at the
20 Health Faculty, Aarhus University.

21
22

1 **References**

- 2
- 3 1 Aflaki E, Moaven N, Borger DK, Lopez G, Westbroek W, Chae JJ, Marugan J, Patnaik S,
4 Maniwang E, Gonzalez AN et al (2016) Lysosomal storage and impaired autophagy lead to
5 inflammasome activation in Gaucher macrophages. *Aging Cell* 15: 77–88 Doi
6 10.1111/acer.12409
- 7 2 Barger SR, Gauthier NC, Krendel M (2019) Squeezing in a Meal: Myosin Functions in
8 Phagocytosis. *Trends Cell Biol*: Doi 10.1016/j.tcb.2019.11.002
- 9 3 Beck AT, Steer RA, Ball R, Ranieri W (1996) Comparison of Beck Depression Inventories –
10 IA and –II in psychiatric outpatients. *J Pers Assess* 67: 588–597 Doi
11 10.1207/s15327752jpa6703_13
- 12 4 Bergeron D, Flynn K, Verret L, Poulin S, Bouchard RW, Bocti C, Fulop T, Lacombe G,
13 Gauthier S, Nasreddine Z et al (2017) Multicenter Validation of an MMSE–MoCA
14 Conversion Table. *J Am Geriatr Soc* 65: 1067–1072 Doi 10.1111/jgs.14779
- 15 5 Bernatowicz P, Kowal K (2016) Soluble CD163 modulates cytokine production by
16 peripheral blood mononuclear cells stimulated by *Dermatophagoides pteronyssinus*
17 allergens in vitro. *Adv Med Sci* 61: 249–254 Doi 10.1016/j.advms.2016.02.004
- 18 6 Brochard V, Combadiere B, Prigent A, Laouar Y, Perrin A, Beray–Berthet V, Bonduelle O,
19 Alvarez–Fischer D, Callebert J, Launay JM et al (2009) Infiltration of CD4+ lymphocytes
20 into the brain contributes to neurodegeneration in a mouse model of Parkinson disease. *J*
21 *Clin Invest* 119: 182–192 Doi 10.1172/JCI36470 [pii] 10.1172/JCI36470
- 22 7 Brockmann K, Apel A, Schulte C, Schneiderhan–Marra N, Pont–Sunyer C, Vilas D, Ruiz–
23 Martinez J, Langkamp M, Corvol JC, Cormier F et al (2016) Inflammatory profile in
24 LRRK2–associated prodromal and clinical PD. *J Neuroinflammation* 13: 122 Doi
25 10.1186/s12974-016-0588-5
- 26 8 Brockmann K, Schulte C, Schneiderhan–Marra N, Apel A, Pont–Sunyer C, Vilas D, Ruiz–
27 Martinez J, Langkamp M, Corvol JC, Cormier F et al (2017) Inflammatory profile
28 discriminates clinical subtypes in LRRK2–associated Parkinsons disease. *Eur J Neurol* 24:
29 427–e426 Doi 10.1111/ene.13223
- 30 9 Chahine LM, Qiang J, Ashbridge E, Minger J, Yearout D, Horn S, Colcher A, Hurtig HI, Lee
31 VM, Van Deerlin VM et al (2013) Clinical and biochemical differences in patients having
32 Parkinson disease with vs without GBA mutations. *JAMA Neurol* 70: 852–858 Doi
33 10.1001/jamaneurol.2013.1274
- 34 10 Collins LM, Williams–Gray CH (2016) The Genetic Basis of Cognitive Impairment and
35 Dementia in Parkinsons Disease. *Front Psychiatry* 7: 89 Doi 10.3389/fpsy.2016.00089
- 36 11 Davydova N, Harris NC, Roufail S, Paquet–Fifeild S, Ishaq M, Streltsov VA, Williams SP,
37 Karnezis T, Stacker SA, Achen MG (2016) Differential Receptor Binding and Regulatory
38 Mechanisms for the Lymphangiogenic Growth Factors Vascular Endothelial Growth
39 Factor (VEGF)–C and –D. *J Biol Chem* 291: 27265–27278 Doi 10.1074/jbc.M116.736801
- 40 12 Dige A, Stoy S, Thomsen KL, Hvas CL, Agnholt J, Dahlerup JF, Moller HJ, Gronbaek H
41 (2014) Soluble CD163, a specific macrophage activation marker, is decreased by anti–

- 1 TNF- α antibody treatment in active inflammatory bowel disease. *Scand J Immunol*
2 80: 417–423 Doi 10.1111/sji.12222
- 3 13 Edison P, Ahmed I, Fan Z, Hinz R, Gelosa G, Ray Chaudhuri K, Walker Z, Turkheimer FE,
4 Brooks DJ (2013) Microglia, amyloid, and glucose metabolism in Parkinsons disease with
5 and without dementia. *Neuropsychopharmacology* 38: 938–949 Doi
6 10.1038/npp.2012.255
- 7 14 Etzerodt A, Maniecki MB, Moller K, Moller HJ, Moestrup SK (2010) Tumor necrosis factor
8 alpha-converting enzyme (TACE/ADAM17) mediates ectodomain shedding of the
9 scavenger receptor CD163. *Journal of leukocyte biology* 88: 1201–1205 Doi
10 10.1189/jlb.0410235
- 11 15 Etzerodt A, Moestrup SK (2013) CD163 and inflammation: biological, diagnostic, and
12 therapeutic aspects. *Antioxidants & redox signaling* 18: 2352–2363 Doi
13 10.1089/ars.2012.4834
- 14 16 Ferreira SA, Romero-Ramos M (2018) Microglia Response During Parkinsons Disease:
15 Alpha-Synuclein Intervention. *Front Cell Neurosci* 12: 247 Doi
16 10.3389/fncel.2018.00247
- 17 17 Folstein MF, Folstein SE, McHugh PR (1975) "Mini-mental state". A practical method for
18 grading the cognitive state of patients for the clinician. *J Psychiatr Res* 12: 189–198 Doi
19 0022-3956(75)90026-6 [pii]
- 20 18 Galea J, Cruickshank G, Teeling JL, Boche D, Garland P, Perry VH, Galea I (2012) The
21 intrathecal CD163-haptoglobin-hemoglobin scavenging system in subarachnoid
22 hemorrhage. *J Neurochem* 121: 785–792 Doi 10.1111/j.1471-4159.2012.07716.x
- 23 19 Georgiev D, Hamberg K, Hariz M, Forsgren L, Hariz GM (2017) Gender differences in
24 Parkinsons disease: A clinical perspective. *Acta Neurol Scand* 136: 570–584 Doi
25 10.1111/ane.12796
- 26 20 Gerhard A, Pavese N, Hotton G, Turkheimer F, Es M, Hammers A, Eggert K, Oertel W,
27 Banati RB, Brooks DJ (2006) In vivo imaging of microglial activation with [^{11}C](R)-
28 PK11195 PET in idiopathic Parkinsons disease. *Neurobiol Dis* 21: 404–412
- 29 21 Goetz CG, Poewe W, Rascol O, Sampaio C, Stebbins GT, Counsell C, Giladi N, Holloway RG,
30 Moore CG, Wenning GK et al (2004) Movement Disorder Society Task Force report on the
31 Hoehn and Yahr staging scale: status and recommendations. *Mov Disord* 19: 1020–1028
32 Doi 10.1002/mds.20213
- 33 22 Goetz CG, Tilley BC, Shaftman SR, Stebbins GT, Fahn S, Martinez-Martin P, Poewe W,
34 Sampaio C, Stern MB, Dodel R et al (2008) Movement Disorder Society-sponsored
35 revision of the Unified Parkinsons Disease Rating Scale (MDS-UPDRS): scale
36 presentation and clinimetric testing results. *Mov Disord* 23: 2129–2170 Doi
37 10.1002/mds.22340
- 38 23 Grozdanov V, Bliederaeuser C, Ruf WP, Roth V, Fundel-Clemens K, Zondler L, Brenner D,
39 Martin-Villalba A, Hengerer B, Kassubek J et al (2014) Inflammatory dysregulation of
40 blood monocytes in Parkinsons disease patients. *Acta Neuropathol* 128: 651–663 Doi
41 10.1007/s00401-014-1345-4

- 1 24 Hall S, Janelidze S, Surova Y, Widner H, Zetterberg H, Hansson O (2018) Cerebrospinal
2 fluid concentrations of inflammatory markers in Parkinsons disease and atypical
3 parkinsonian disorders. *Sci Rep* 8: 13276 Doi 10.1038/s41598-018-31517-z
- 4 25 Harms AS, Delic V, Thome AD, Bryant N, Liu Z, Chandra S, Jurkuvenaite A, West AB (2017)
5 alpha-Synuclein fibrils recruit peripheral immune cells in the rat brain prior to
6 neurodegeneration. *Acta Neuropathol Commun* 5: 85 Doi 10.1186/s40478-017-0494-9
- 7 26 Hartl D, May P, Gu W, Mayhaus M, Pichler S, Spaniol C, Glaab E, Bobbili DR, Antony P,
8 Koegelsberger Set al (2020) A rare loss-of-function variant of ADAM17 is associated
9 with late-onset familial Alzheimer disease. *Mol Psychiatry* 25: 629-639 Doi
10 10.1038/s41380-018-0091-8
- 11 27 Hemstedt TJ, Bengtson CP, Ramirez O, Oliveira AMM, Bading H (2017) Reciprocal
12 Interaction of Dendrite Geometry and Nuclear Calcium-VEGFD Signaling Gates Memory
13 Consolidation and Extinction. *J Neurosci* 37: 6946-6955 Doi 10.1523/JNEUROSCI.2345-
14 16.2017
- 15 28 Herlofson K, Heijnen CJ, Lange J, Alves G, Tysnes OB, Friedman JH, Fagundes CP (2018)
16 Inflammation and fatigue in early, untreated Parkinsons Disease. *Acta Neurol Scand* 138:
17 394-399 Doi 10.1111/ane.12977
- 18 29 Hoops S, Nazem S, Siderowf AD, Duda JE, Xie SX, Stern MB, Weintraub D (2009) Validity of
19 the MoCA and MMSE in the detection of MCI and dementia in Parkinson disease.
20 *Neurology* 73: 1738-1745 Doi 10.1212/WNL.0b013e3181c34b47
- 21 30 Hu X, Yang Y, Gong D (2017) Changes of cerebrospinal fluid Abeta42, t-tau, and p-tau in
22 Parkinsons disease patients with cognitive impairment relative to those with normal
23 cognition: a meta-analysis. *Neurol Sci* 38: 1953-1961 Doi 10.1007/s10072-017-3088-
24 1
- 25 31 Imamura K, Hishikawa N, Sawada M, Nagatsu T, Yoshida M, Hashizume Y (2003)
26 Distribution of major histocompatibility complex class II-positive microglia and cytokine
27 profile of Parkinsons disease brains. *Acta Neuropathol (Berl)*:
- 28 32 Janelidze S, Lindqvist D, Francardo V, Hall S, Zetterberg H, Blennow K, Adler CH, Beach
29 TG, Serrano GE, van Westen Det al (2015) Increased CSF biomarkers of angiogenesis in
30 Parkinson disease. *Neurology* 85: 1834-1842 Doi 10.1212/WNL.0000000000002151
- 31 33 Jude C, Dejica D, Samasca G, Balacescu L, Balacescu O (2013) Soluble CD163 serum levels
32 are elevated and correlated with IL-12 and CXCL10 in patients with long-standing
33 rheumatoid arthritis. *Rheumatol Int* 33: 1031-1037 Doi 10.1007/s00296-012-2459-4
- 34 34 Kang JH, Irwin DJ, Chen-Plotkin AS, Siderowf A, Caspell C, Coffey CS, Waligorska T, Taylor
35 P, Pan S, Frasier Met al (2013) Association of cerebrospinal fluid beta-amyloid 1-42, T-
36 tau, P-tau181, and alpha-synuclein levels with clinical features of drug-naive patients
37 with early Parkinson disease. *JAMA Neurol* 70: 1277-1287 Doi
38 10.1001/jamaneurol.2013.3861
- 39 35 Keren-Shaul H, Spinrad A, Weiner A, Matcovitch-Natan O, Dvir-Szternfeld R, Ulland TK,
40 David E, Baruch K, Lara-Astaiso D, Toth Bet al (2017) A Unique Microglia Type

- 1 Associated with Restricting Development of Alzheimers Disease. *Cell* 169: 1276–
2 1290. e1217 Doi 10.1016/j.cell.2017.05.018
- 3 36 King E, Thomas A (2017) Systemic Inflammation in Lewy Body Diseases: A Systematic
4 Review. *Alzheimer Dis Assoc Disord* 31: 346–356 Doi
5 10.1097/WAD.0000000000000211
- 6 37 Klegeris A, Giasson BI, Zhang H, Maguire J, Pelech S, McGeer PL (2006) Alpha-synuclein
7 and its disease-causing mutants induce ICAM-1 and IL-6 in human astrocytes and
8 astrocytoma cells. *FASEB J* 20: 2000–2008 Doi 10.1096/fj.06-6183com
- 9 38 Klein SL, Flanagan KL (2016) Sex differences in immune responses. *Nat Rev Immunol* 16:
10 626–638 Doi 10.1038/nri.2016.90
- 11 39 Kosmopoulos M, Christofides A, Drekolias D, Zavras PD, Gargalionis AN, Piperi C (2018)
12 Critical Role of IL-8 Targeting in Gliomas. *Curr Med Chem* 25: 1954–1967 Doi
13 10.2174/0929867325666171129125712
- 14 40 Kristiansen M, Graversen JH, Jacobsen C, Sonne O, Hoffman HJ, Law SK, Moestrup SK
15 (2001) Identification of the haemoglobin scavenger receptor. *Nature* 409: 198–201 Doi
16 10.1038/35051594
- 17 41 Kustrimovic N, Comi C, Magistrelli L, Rasini E, Legnaro M, Bombelli R, Aleksic I, Blandini F,
18 Minafra B, Riboldazzi Get al (2018) Parkinsons disease patients have a complex
19 phenotypic and functional Th1 bias: cross-sectional studies of CD4+ Th1/Th2/T17 and
20 Treg in drug-naive and drug-treated patients. *J Neuroinflammation* 15: 205 Doi
21 10.1186/s12974-018-1248-8
- 22 42 Lawson C, Wolf S (2009) ICAM-1 signaling in endothelial cells. *Pharmacol Rep* 61: 22–32
- 23 43 Lee SJ, Benveniste EN (1999) Adhesion molecule expression and regulation on cells of the
24 central nervous system. *J Neuroimmunol* 98: 77–88 Doi 10.1016/s0165-
25 5728(99)00084-3
- 26 44 Li YI, Wong G, Humphrey J, Raj T (2019) Prioritizing Parkinsons disease genes using
27 population-scale transcriptomic data. *Nat Commun* 10: 994 Doi 10.1038/s41467-019-
28 08912-9
- 29 45 Litvan I, Bhatia KP, Burn DJ, Goetz CG, Lang AE, McKeith I, Quinn N, Sethi KD, Shults C,
30 Wenning GK et al (2003) Movement Disorders Society Scientific Issues Committee report:
31 SIC Task Force appraisal of clinical diagnostic criteria for Parkinsonian disorders. *Mov*
32 *Disord* 18: 467–486 Doi 10.1002/mds.10459
- 33 46 Ma C, Panaccione R, Khanna R, Feagan BG, Jairath V (2019) IL12/23 or selective IL23
34 inhibition for the management of moderate-to-severe Crohns disease? *Best Pract Res*
35 *Clin Gastroenterol* 38–39: 101604 Doi 10.1016/j.bpg.2019.02.006
- 36 47 Madsen M, Moller HJ, Nielsen MJ, Jacobsen C, Graversen JH, van den Berg T, Moestrup SK
37 (2004) Molecular characterization of the haptoglobin, hemoglobin receptor CD163.
38 Ligand binding properties of the scavenger receptor cysteine-rich domain region. *J Biol*
39 *Chem* 279: 51561–51567 Doi 10.1074/jbc.M409629200

- 1 48 Miklossy J, Doudet DD, Schwab C, Yu S, McGeer EG, McGeer PL (2006) Role of ICAM-1 in
2 persisting inflammation in Parkinson disease and MPTP monkeys. *Exp Neurol* 197: 275–
3 283 Doi 10.1016/j.expneurol.2005.10.034
- 4 49 Mishra HK, Ma J, Walcheck B (2017) Ectodomain Shedding by ADAM17: Its Role in
5 Neutrophil Recruitment and the Impairment of This Process during Sepsis. *Front Cell*
6 *Infect Microbiol* 7: 138 Doi 10.3389/fcimb.2017.00138
- 7 50 Mollenhauer B, Zimmermann J, Sixel-Doring F, Focke NK, Wicke T, Ebentheuer J,
8 Schaumburg M, Lang E, Friede T, Trenkwalder C et al (2019) Baseline predictors for
9 progression 4 years after Parkinsons disease diagnosis in the De Novo Parkinson Cohort
10 (DeNoPa). *Mov Disord* 34: 67–77 Doi 10.1002/mds.27492
- 11 51 Moller HJ (2012) Soluble CD163. *Scand J Clin Lab Invest* 72: 1–13 Doi
12 10.3109/00365513.2011.626868
- 13 52 Moller HJ, de Fost M, Aerts H, Hollak C, Moestrup SK (2004) Plasma level of the
14 macrophage-derived soluble CD163 is increased and positively correlates with severity
15 in Gauchers disease. *Eur J Haematol* 72: 135–139 Doi 10.1046/j.0902–
16 4441.2003.00193.x
- 17 53 Moller HJ, Hald K, Moestrup SK (2002) Characterization of an enzyme-linked
18 immunosorbent assay for soluble CD163. *Scand J Clin Lab Invest* 62: 293–299
- 19 54 Moller HJ, Nielsen MJ, Maniecki MB, Madsen M, Moestrup SK (2010) Soluble
20 macrophage-derived CD163: a homogenous ectodomain protein with a dissociable
21 haptoglobin-hemoglobin binding. *Immunobiology* 215: 406–412 Doi
22 10.1016/j.imbio.2009.05.003
- 23 55 Moller HJ, Peterslund NA, Graversen JH, Moestrup SK (2002) Identification of the
24 hemoglobin scavenger receptor/CD163 as a natural soluble protein in plasma. *Blood* 99:
25 378–380 Doi 10.1182/blood.v99.1.378
- 26 56 Nissen SK, Shrivastava K, Schulte C, Otzen DE, Goldeck D, Berg D, Moller HJ, Maetzler W,
27 Romero-Ramos M (2019) Alterations in Blood Monocyte Functions in Parkinsons
28 Disease. *Mov Disord* 34: 1711–1721 Doi 10.1002/mds.27815
- 29 57 Nissen SK, Shrivastava K, Schulte C, Otzen DE, Goldeck D, Berg D, Moller HJ, Maetzler W,
30 Romero-Ramos M (2019) Alterations in Blood Monocyte Functions in Parkinsons
31 Disease. *Mov Disord*: Doi 10.1002/mds.27815
- 32 58 OConnell GC, Tennant CS, Lucke-Wold N, Kabbani Y, Tarabishy AR, Chantler PD, Barr TL
33 (2017) Monocyte-lymphocyte cross-communication via soluble CD163 directly links
34 innate immune system activation and adaptive immune system suppression following
35 ischemic stroke. *Sci Rep* 7: 12940 Doi 10.1038/s41598-017-13291-6
- 36 59 Pan W, Wu X, He Y, Hsueh H, Huang EY, Mishra PK, Kastin AJ (2013) Brain interleukin–
37 15 in neuroinflammation and behavior. *Neurosci Biobehav Rev* 37: 184–192 Doi
38 10.1016/j.neubiorev.2012.11.009
- 39 60 Patidar M, Yadav N, Dalai SK (2016) Interleukin 15: A key cytokine for immunotherapy.
40 *Cytokine Growth Factor Rev* 31: 49–59 Doi 10.1016/j.cytogfr.2016.06.001

- 1 61 Perner C, Perner F, Gaur N, Zimmermann S, Witte OW, Heidel FH, Grosskreutz J, Prell T
2 (2019) Plasma VCAM1 levels correlate with disease severity in Parkinsons disease. J
3 Neuroinflammation 16: 94 Doi 10.1186/s12974-019-1482-8
- 4 62 Pey P, Pearce RK, Kalaitzakis ME, Griffin WS, Gentleman SM (2014) Phenotypic profile of
5 alternative activation marker CD163 is different in Alzheimers and Parkinsons disease.
6 Acta Neuropathol Commun 2: 21 Doi 10.1186/2051-5960-2-21
- 7 63 Polfliet MM, Fabriek BO, Daniels WP, Dijkstra CD, van den Berg TK (2006) The rat
8 macrophage scavenger receptor CD163: expression, regulation and role in inflammatory
9 mediator production. Immunobiology 211: 419-425 Doi 10.1016/j.imbio.2006.05.015
- 10 64 Qin XY, Zhang SP, Cao C, Loh YP, Cheng Y (2016) Aberrations in Peripheral Inflammatory
11 Cytokine Levels in Parkinson Disease: A Systematic Review and Meta-analysis. JAMA
12 Neurol 73: 1316-1324 Doi 10.1001/jamaneurol.2016.2742
- 13 65 Raj T, Rothamel K, Mostafavi S, Ye C, Lee MN, Replogle JM, Feng T, Lee M, Asinovski N,
14 Frohlich I et al (2014) Polarization of the effects of autoimmune and neurodegenerative
15 risk alleles in leukocytes. Science 344: 519-523 Doi 10.1126/science.1249547
- 16 66 Rocha NP, Scalzo PL, Barbosa IG, Souza MS, Morato IB, Vieira EL, Christo PP, Teixeira AL,
17 Reis HJ (2014) Cognitive Status Correlates with CXCL10/IP-10 Levels in Parkinsons
18 Disease. Parkinsons Dis 2014: 903796 Doi 10.1155/2014/903796
- 19 67 Santaella A, Kuiperij HB, van Rumund A, Esselink RAJ, van Gool AJ, Bloem BR, Verbeek
20 MM (2020) Inflammation biomarker discovery in Parkinsons disease and atypical
21 parkinsonisms. BMC Neurol 20: 26 Doi 10.1186/s12883-020-1608-8
- 22 68 Sawada H, Oeda T, Umemura A, Tomita S, Kohsaka M, Park K, Yamamoto K, Sugiyama H
23 (2015) Baseline C-Reactive Protein Levels and Life Prognosis in Parkinson Disease. PLoS
24 One 10: e0134118 Doi 10.1371/journal.pone.0134118
- 25 69 Sawada M, Imamura K, Nagatsu T (2006) Role of cytokines in inflammatory process in
26 Parkinsons disease. J Neural Transm Suppl: 373-381
- 27 70 Scheller J, Chalaris A, Garbers C, Rose-John S (2011) ADAM17: a molecular switch to
28 control inflammation and tissue regeneration. Trends Immunol 32: 380-387 Doi
29 10.1016/j.it.2011.05.005
- 30 71 Schlachetzki JCM, Prots I, Tao J, Chun HB, Saijo K, Gosselin D, Winner B, Glass CK, Winkler
31 J (2018) A monocyte gene expression signature in the early clinical course of Parkinsons
32 disease. Sci Rep 8: 10757 Doi 10.1038/s41598-018-28986-7
- 33 72 Schwarzschild MA, Marek K, Eberly S, Oakes D, Shoulson I, Jennings D, Seibyl J, Ascherio
34 A, Parkinson Study Group PI (2011) Serum urate and probability of dopaminergic deficit
35 in early "Parkinsons disease". Mov Disord 26: 1864-1868 Doi 10.1002/mds.23741
- 36 73 Stacker SA, Achen MG (2018) Emerging Roles for VEGF-D in Human Disease.
37 Biomolecules 8: Doi 10.3390/biom8010001
- 38 74 Steiner O, Coisne C, Cecchelli R, Boscacci R, Deutsch U, Engelhardt B, Lyck R (2010)
39 Differential roles for endothelial ICAM-1, ICAM-2, and VCAM-1 in shear-resistant T cell
40 arrest, polarization, and directed crawling on blood-brain barrier endothelium. J
41 Immunol 185: 4846-4855 Doi 10.4049/jimmunol.0903732

- 1 75 Stilund M, Reuschlein AK, Christensen T, Moller HJ, Rasmussen PV, Petersen T (2014) Soluble CD163 as a marker of macrophage activity in newly diagnosed patients with multiple sclerosis. *PLoS One* 9: e98588 Doi 10.1371/journal.pone.0098588
- 2
3
4 76 Stone KP, Kastin AJ, Pan W (2011) NFκB is an unexpected major mediator of interleukin-15 signaling in cerebral endothelia. *Cell Physiol Biochem* 28: 115–124 Doi 10.1159/000331720
- 5
6
7 77 Storelli E, Cassina N, Rasini E, Marino F, Cosentino M (2019) Do Th17 Lymphocytes and IL-17 Contribute to Parkinsons Disease? A Systematic Review of Available Evidence. *Front Neurol* 10: 13 Doi 10.3389/fneur.2019.00013
- 8
9
10 78 Tansey MG, Romero-Ramos M (2019) Immune system responses in Parkinsons disease: Early and dynamic. *Eur J Neurosci* 49: 364–383 Doi 10.1111/ejn.14290
- 11
12 79 Tentillier N, Etzerodt A, Olesen MN, Rizalar FS, Jacobsen J, Bender D, Moestrup SK, Romero-Ramos M (2016) Anti-Inflammatory Modulation of Microglia via CD163-Targeted Glucocorticoids Protects Dopaminergic Neurons in the 6-OHDA Parkinsons Disease Model. *J Neurosci* 36: 9375–9390 Doi 10.1523/JNEUROSCI.1636-16.2016
- 13
14
15
16 80 Timmermann M, Buck F, Sorg C, Hogger P (2004) Interaction of soluble CD163 with activated T lymphocytes involves its association with non-muscle myosin heavy chain type A. *Immunol Cell Biol* 82: 479–487 Doi 10.1111/j.0818-9641.2004.01277.x
- 17
18
19 81 Tsakadze NL, Sithu SD, Sen U, English WR, Murphy G, DSouza SE (2006) Tumor necrosis factor-α-converting enzyme (TACE/ADAM-17) mediates the ectodomain cleavage of intercellular adhesion molecule-1 (ICAM-1). *J Biol Chem* 281: 3157–3164 Doi 10.1074/jbc.M510797200
- 20
21
22
23 82 Tysnes OB, Storstein A (2017) Epidemiology of Parkinsons disease. *J Neural Transm (Vienna)* 124: 901–905 Doi 10.1007/s00702-017-1686-y
- 24
25 83 Verbij FC, Sorvillo N, Kaijen PHP, Hrdinova J, Peyron I, Fijnheer R, Ten Brinke A, Meijer AB, van Alphen FPJ, van den Berg TK et al (2017) The class I scavenger receptor CD163 promotes internalization of ADAMTS13 by macrophages. *Blood Adv* 1: 293–305 Doi 10.1182/bloodadvances.2016001321
- 26
27
28
29 84 Villa A, Gelosa P, Castiglioni L, Cimino M, Rizzi N, Pepe G, Lolli F, Marcello E, Sironi L, Vegeto E et al (2018) Sex-Specific Features of Microglia from Adult Mice. *Cell Rep* 23: 3501–3511 Doi 10.1016/j.celrep.2018.05.048
- 30
31
32 85 Villumsen M, Aznar S, Pakkenberg B, Jess T, Brudek T (2019) Inflammatory bowel disease increases the risk of Parkinsons disease: a Danish nationwide cohort study 1977–2014. *Gut* 68: 18–24 Doi 10.1136/gutjnl-2017-315666
- 33
34
35 86 Wijeyekoon RS, Kronenberg-Versteeg D, Scott KM, Hayat S, Kuan WL, Evans JR, Breen DP, Cummins G, Jones JL, Clatworthy MR et al (2020) Peripheral innate immune and bacterial signals relate to clinical heterogeneity in Parkinsons disease. *Brain Behav Immun*: Doi 10.1016/j.bbi.2020.01.018
- 36
37
38
39 87 Xu S, Lu J, Shao A, Zhang JH, Zhang J (2020) Glial Cells: Role of the Immune Response in Ischemic Stroke. *Front Immunol* 11: 294 Doi 10.3389/fimmu.2020.00294
- 40
41

| Cohort #1 | | PD | HC (CSF & serum) |
|---|----------------|------------------|------------------|
| Female/male ns | Mean | 53/56 | 19/25 |
| | Count | 109 | 44 |
| Age at onset | Mean ± SD | 61.4 ± 10.7 | - |
| | Min-Max, Count | [30-82], 109 | - |
| Age at visit ns | Mean ± SD | 66.6 ± 9.9 | 64.1 ± 10.7 |
| | Min-Max, Count | [36-84], 109 | [42-81], 44 |
| Disease duration | Mean ± SD | 5.2 ± 5.0 | - |
| | Min-Max, Count | [0-22] 109 | - |
| LEDD | Mean ± SD | 351.9 ± 372.2 | - |
| | Min-Max, Count | [0-1532], 106 | - |
| Hoehn & Yahr | Mean ± SD | 2,2 ± 0.8 | - |
| | Min-Max, Count | [1-4], 105 | - |
| UPDRS III | Mean ± SD | 25.6 ± 10.6 | - |
| | Min-Max, Count | [7-66], 96 | - |
| MoCA ns | Mean ± SD | 25.5 ± 4.9 | 26.9 ± 2.2 |
| | Min-Max, Count | [11-30], 67 | [23-30], 18 |
| Mini Mental ns | Mean ± SD | 27 ± 3.9 | 28 ± 3.1 |
| | Min-Max, Count | [14-30], 100 | [17-30], 30 |
| MMSE (O+C) ns | Mean ± SD | 27.1 ± 3.9 | 28 ± 3.1 |
| | Min-Max, Count | [14-30], 105 | [17-30], 30 |
| CSF Abeta42 | Mean ± SD | 731 ± 266 | 902 ± 307 ** |
| | Min-Max, Count | [118-1435], 107 | [352-1616], 39 |
| CSF h-Tau ns | Mean ± SD | 244 ± 172 | 273 ± 159 |
| | Min-Max, Count | [25-1074], 107 | [112-992], 39 |
| CSF p-Tau | Mean ± SD | 41 ± 19 | 50 ± 22 * |
| | Min-Max, Count | [15-113], 103 | [22-149], 39 |
| CSF total α-syn ns | Mean ± SD | 561 ± 281 | 496 ± 150 |
| | Min-Max, Count | [190-1834], 92 | [226-715], 18 |
| Albumin CSF/serum x10 ⁻³ ns | Mean ± SD | 7,25 ± 3,8 | 6,64 ± 2,1 |
| | Min-Max, Count | [2,10-20,58], 66 | [2,72-11,69], 36 |

Table 1 Detailed overview of cohort #1

Mean, standard derivation (SD), [range] and the number of individuals for whom the data were available at sampling time are shown for: L-dopa equivalent daily dose (LEDD), Unified Parkinson's Disease Rating Scale three (UPDRS III), the Montreal Cognitive Assessment (MoCA) score, the Mini-Mental State Examination (MMSE), MMSE original + converted from MoCA (MMSE O+C). Significance between groups was tested with unpaired t tests: p values with trends are stated, * p < 0.05, ** p < 0.01.

| Cohort #2 122 (148) | | PD | HC (CSF & serum) | HC (incl. extra for serum ♂) |
|------------------------|----------------|-----------------|---------------------|---------------------------------|
| Female/male | Mean | 45 / 61 | 11 / 5 | 20 / 22 |
| | Count | 106 | 16 | 42 |
| Age at onset | Mean ± SD | 59.1 ± 10.3 | - | - |
| | Min-Max, Count | [38-76], 106 | - | - |
| Age at visit | Mean ± SD | 64.2 ± 10.7 | 56.9 ± 10.9 * | 63.2 ± 11.5 |
| | Min-Max, Count | [41-86], 106 | [43-77], 16 | [42-81], 42 |
| Disease duration | Mean ± SD | 5.1 ± 3.5 | - | - |
| | Min-Max, Count | [0-17], 106 | - | - |
| LEDD | Mean ± SD | 453.7 ± 335.6 | - | - |
| | Min-Max, Count | [0-1574], 106 | - | - |
| Hoehn and Yahr | Mean ± SD | 2.0 ± 0.6 | - | - |
| | Min-Max, Count | [1-4], 104 | - | - |
| UPDRS III | Mean ± SD | 22.8 ± 11.2 | - | - |
| | Min-Max, Count | [3-66], 101 | - | - |
| BDI II | Mean ± SD | 8.3 ± 6.3 | 6.0 ± 1 | 6.8 ± 7.6 |
| | Min-Max, Count | [0-27], 74 | [5-7], 3 | [0-22], 8 |
| Sniffin sticks 12 | Mean ± SD | 6.7 ± 2.6 | - | 5 |
| | Min-Max, Count | [2-12], 59 | - | 1 |
| MoCA | Mean ± SD | 25.8 ± 3.6 | 27.7 ± 4 | 27.0 ± 2.4 |
| | Count | [11-30], 93 | [23-30], 3 | [23-30], 14 |
| MMSE (O) | Mean ± SD | 28.1 ± 2.3 | 28.3 ± 2.9 | 28.0 ± 3.4 |
| | Min-Max, Count | [17-30], 89 | [23-30], 6 | [17-30], 24 |
| MMSE (O+C) | Mean ± SD | 28.1 ± 2.3 | 28.3 ± 2.9 | 28.0 ± 3.4 |
| | Min-Max, Count | [17-30], 101 | [23-30], 6 | [17-30], 24 |
| CSF Abeta42 | Mean ± SD | 701 ± 246.9 | 787 ± 248.3 | - |
| | Min-Max, Count | [256-1312], 104 | [352-1215], 16 | - |
| CSF h-Tau | Mean ± SD | 221.7 ± 109.5 | 233.8 ± 213.3 | - |
| | Min-Max, Count | [57-737], 104 | [129-992], 16 | - |
| CSF p-Tau | Mean ± SD | 38.6 ± 14.6 | 42.3 ± 29.7 | - |
| | Min-Max, Count | [15-97], 103 | [18-149], 16 | - |
| CSF total α-syn | Mean ± SD | 631 ± 274.7 | 531 ± 101.6 | - |
| | Min-Max, Count | [200-1486], 71 | [289-664], 13 | - |

Table 2 Detailed overview of cohort #2

Mean, standard deviation (SD), [range] and the number of individuals for whom the data were available at sampling time are shown for: L-dopa equivalent daily dose (LEDD), Unified Parkinson's Disease Rating Scale three (UPDRS III), Beck Depression Inventory II (BDI II), the Montreal Cognitive Assessment (MoCA) score, the Mini-Mental State Examination (MMSE) original score (O), MMSE original + converted from MoCA (MMSE O+C). ♂: Extra 26 serum controls from cohort #1 were added, since measurements of nine cytokines were unaffected by an extra freezing/thaw cycle, for details see **Suppl. Table 1**. Significant differences were tested between PD and HC groups with unpaired t tests: * p 0.0124.

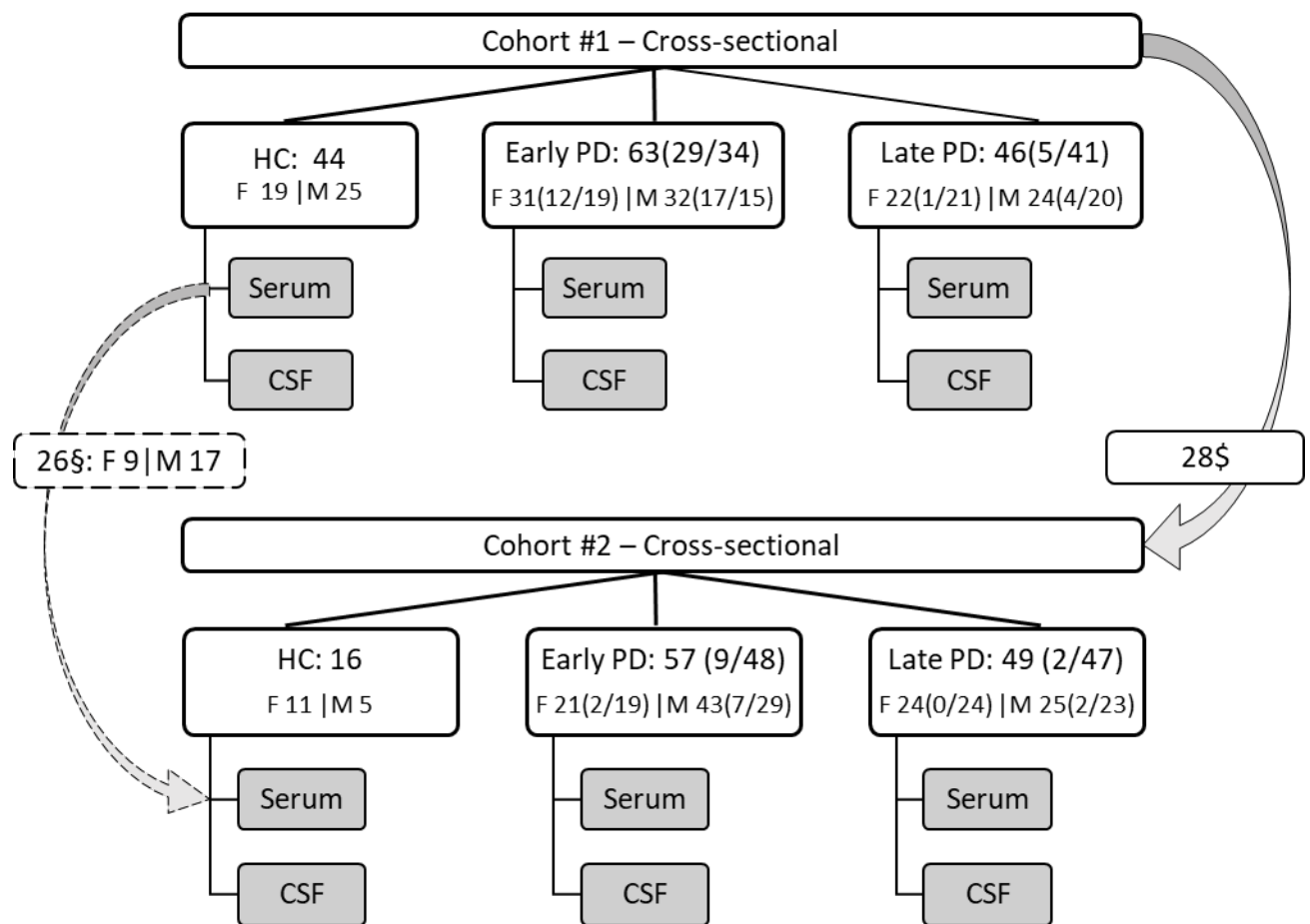


Figure 1 Overview of cohorts

Cross-sectional sampling of serum and CSF in two cohorts. Cohort #1 consists of a total of 153 individuals, 44 healthy controls (HCs) and 109 Parkinson's disease (PD) patients with early [<5 years since diagnosis] or late [≥ 5 years since diagnosis] stage disease. Treatment status of patients are shown in brackets; untreated (UT)/treated (T). More details of cohort #1 are found in **Table 1**. Cohort #2 consists of total 122 individuals, 16 HCs and 106 PD patients with early or late status. §: Twenty-eight individuals from cohort #1 had new aliquots of the biological samples included and analyzed in cohort #2 (4 HC females (F), 4 F early PD (1UT/3T), 3 F late PD (1UT/2T), 10 male (M) early PD (7UT/3T), 7 M late PD (2UT/5T)). More details of cohort #2 are found in **Table 2** §: Twenty-six serum samples from controls (9 F, 17 M) from cohort #1 were reused for in cohort #2 for analyzing nine cytokines, which were found insensitive for repeated thawing using 40-plex mesoscale. See **Suppl. Table 1** for an assay overview for cohort #2.

1

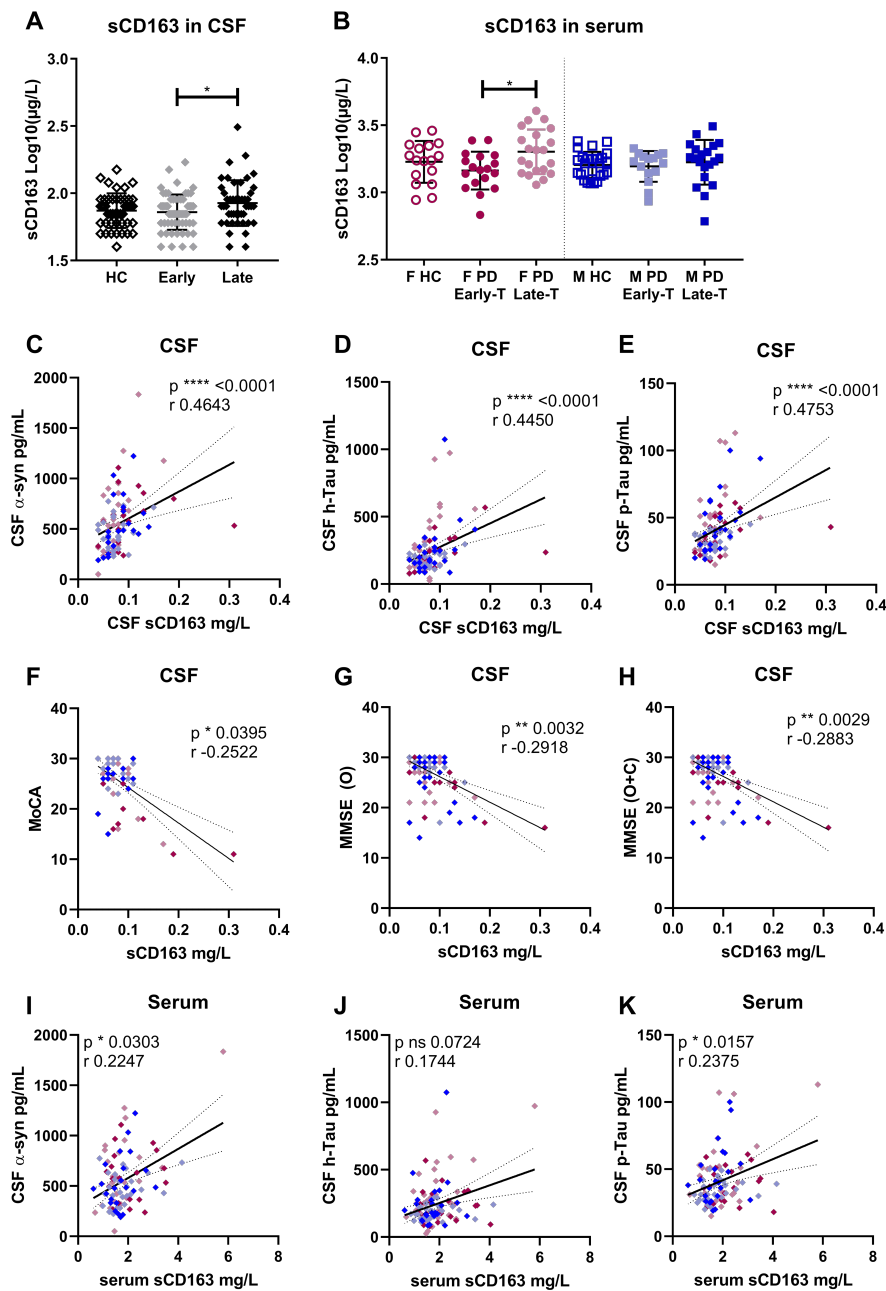


Figure 2 Identification of sCD163 as a biomarker of PD progression (cohort #1).

Soluble (s)CD163 levels in CSF **A**) and serum **B**) from healthy controls (HC) or Parkinson's disease (PD) patients at early (<5 years with diagnosis) or late (≥ 5 years with diagnosis) disease stage. Serum measurements were gender separated into female (F) and male (M) groups due to a priori identification of gender difference and include only treated patients. Data are mean \pm SD, values were log transformed to achieve normality. CSF sCD163 for all PD patients were correlated to well characterized neurodegenerative/PD-CSF markers: **C**) alpha-synuclein (α -syn), **D**) total Tau (h-Tau), and **E**) phosphorylated Tau (p-Tau); as well as with clinical cognitive scores: **F**) the Montreal Cognitive Assessment (MoCA), **G**) the Mini-Mental State Exam (MMSE) original score (O), or **H**) original plus converted from MoCA (O+C). **I**) CSF α -syn, **K**) p-Tau and serum sCD163 were correlated, and showed a similar trend for CSF levels of **J**) h-Tau. P values for one-way ANOVA with Tukey's multiple comparisons test values, respectively, Spearman two-tail p values (* <0.05, ** <0.01, ***<0.001, ****<0.0001), Spearman r, and best-fit slope with 95% confidence intervals are plotted. Further information on cognitive scoring correlations with respect to progression status and covariance can be found in **Suppl. Table 2 & 3**.

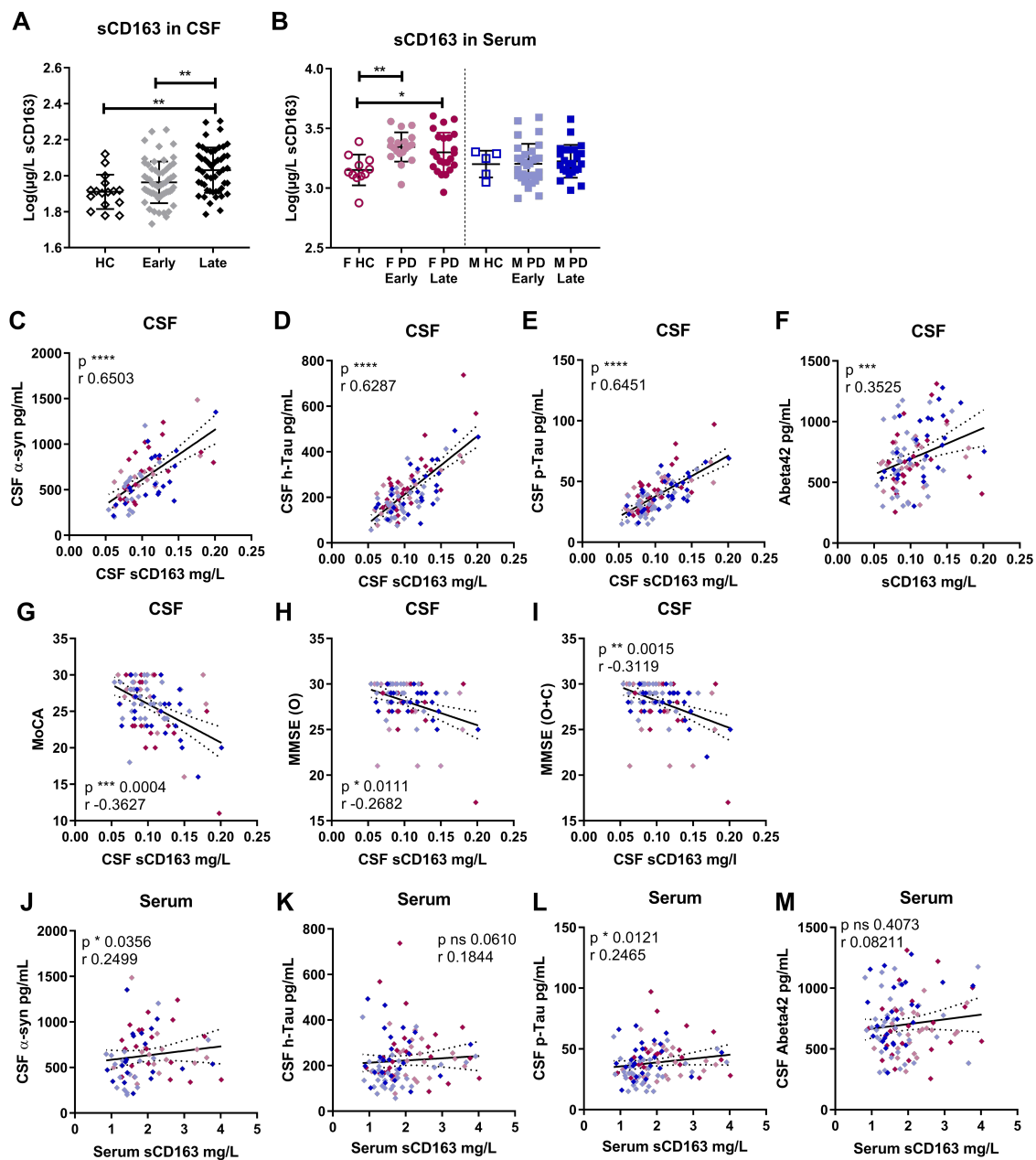


Figure 3 Confirmation of sCD163 as a biomarker of PD progression (cohort #2)

Soluble (s)CD163 measurements in **A**) CSF and **B**) serum from healthy controls (HC) or Parkinson's disease (PD) patients with early (<5 years with diagnosis) or late (\geq 5 years with diagnosis) status, with serum measurements being gender separated into female (F) and male (M) groups due to a priori identification of gender difference and include only treated patients. Data are mean \pm SD, values were log transform to achieve normality. CSF-sCD163 for all PD patients were correlated to well-characterized neurodegenerative/PD-CSF markers: **C**) alpha-synuclein (α -syn), **D**) total Tau (h-Tau), **E**) phosphorylated Tau (p-Tau), and **F**) Abeta42; as well as with clinical cognitive scores: **G**) the Montreal Cognitive Assessment (MoCA), **H**) the Mini-Mental State Exam (MMSE) original score (O), or **I**) original plus converted from MoCA (O+C). **J**) CSF α -syn, **L**) p-Tau and serum sCD163 were correlated, and showed a similar trend for CSF levels of **K**) h-Tau. No correlation was found for serum sCD163 and **M**) Abeta42 in CSF, P values for ordinary (parametric), or Kruskal-Wallis (non-parametric) one-way ANOVA with Tukey's or Dunn's multiple comparisons test values, respectively, Spearman two-tail p values (* <0.05, ** <0.01, ***<0.001, ****<0.0001), Spearman r, and best-fit slope with 95% confidence intervals are plotted. Further information on cognitive scoring correlations with respect to progression status and covariance can be found in **Suppl. Table 4, 5 & 6**.

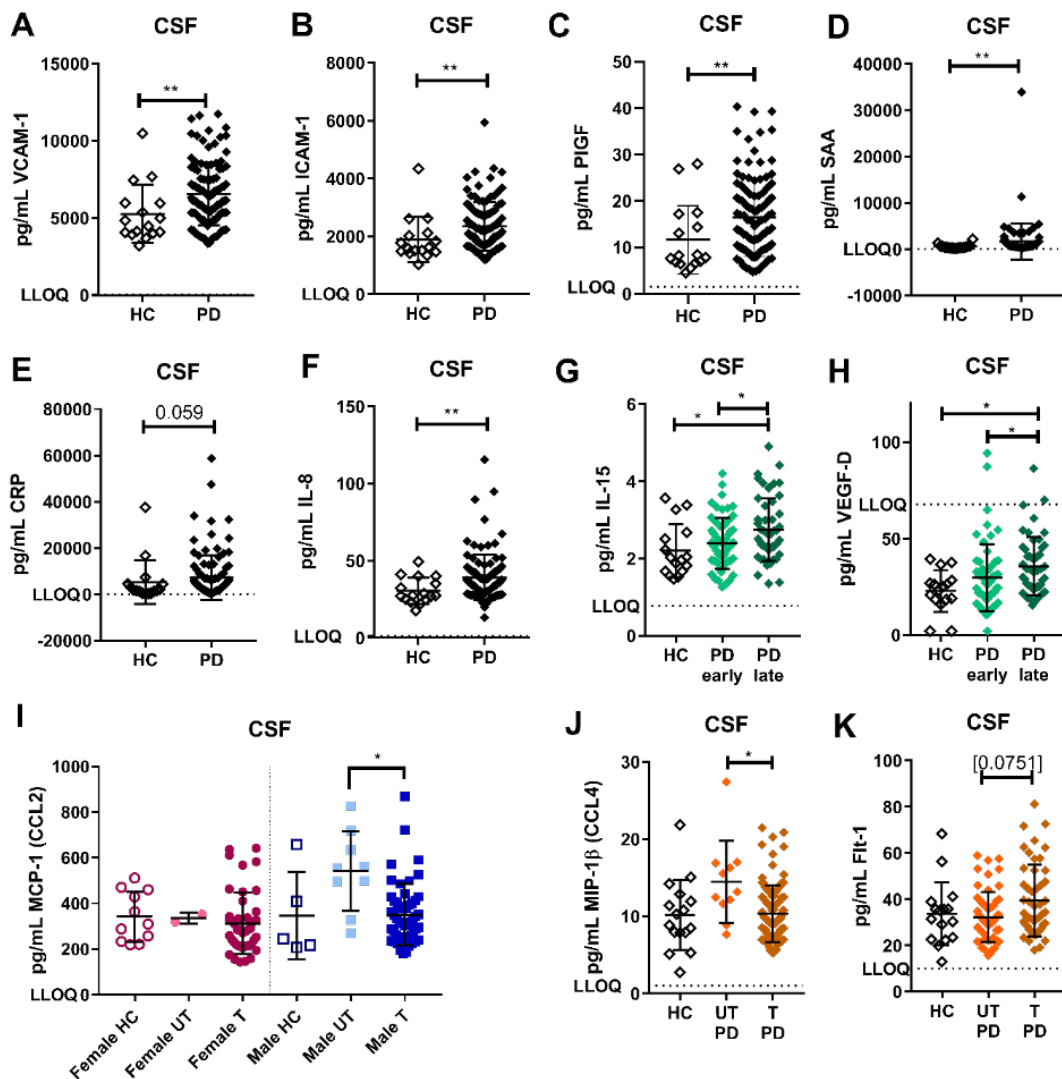


Figure 4 Screening of other CSF PD biomarkers (cohort #2)

Sixteen different CSF biomarkers from the 40-plex mesoscale assay had values >LLOD (lower limit of detection) and were tested for differences between healthy control (HC) and Parkinson's disease (PD) patient groups **A-F**); or with respect to progression from early (<5 years since diagnosis) to late (\geq 5 years since diagnosis) **G-H**); or with respect to treatment (T) status with or without (UT) L-dopa **I-K**). MCP-1 (CCL2) was gender separated due to a priori identification of gender difference **I**). Biomarkers with no differences (or no statistical trend) between groups are shown in **Suppl. Fig 1**. Data are mean \pm SD. P values are shown for unpaired (parametric) t test or (non-parametric) Mann-Whitney test; for (parametric) ordinary or (non-parametric) Kruskal-Wallis one-way ANOVA with Tukey's or Dunn's multiple comparisons test values, respectively, as appropriate: * <0.05, ** <0.01, ***<0.001, ****<0.0001. Lower limit of quantification (LLOQ).

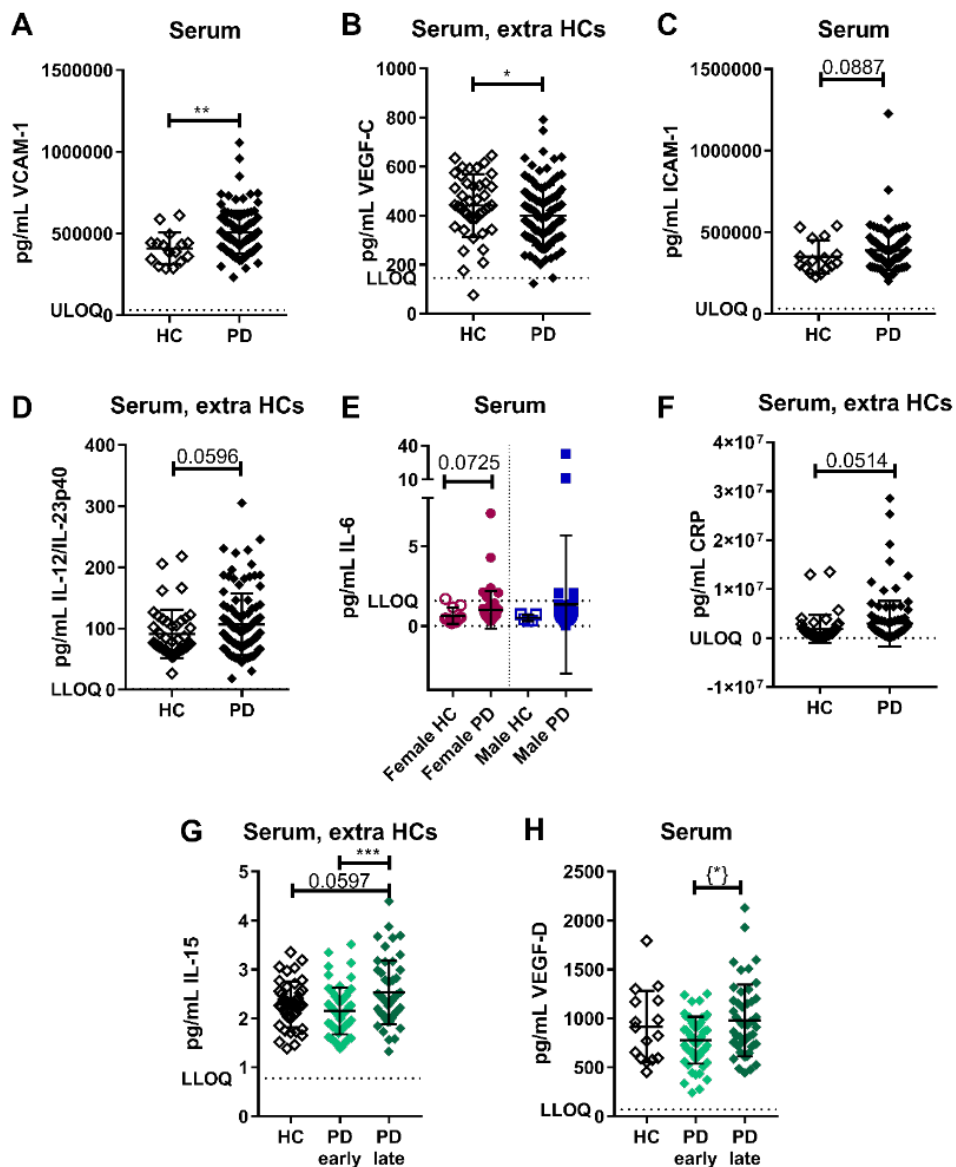


Figure 5 Screening for additional serum biomarkers (cohort #2)

Twenty seven different serum biomarkers from the 40-plex mesoscale assay had values >LLOD (lower limit of detection) and were tested for differences between healthy control (HC) and Parkinson's disease (PD) patient groups **A-F**); or with respect to progression from early (<5 years since diagnosis) to late (≥ 5 years since diagnosis) **G-H**). IL-6 was gender separated due to a priori identification of gender difference **E**) Biomarkers with no differences between groups are shown in **Suppl. Figure 2**. Twenty-six extra/additional HCs serum samples from cohort #1 were added for biomarkers unaffected by extra freezing/thaw cycle (B,D,F,G). Data are mean \pm SD. P values are shown for unpaired (parametric) t test or (non-parametric) Mann-Whitney test; for (parametric) ordinary or (non-parametric) Kruskal-Wallis one-way ANOVA with Tukey's or Dunn's multiple comparisons test values, respectively, as appropriate: * < 0.05, ** < 0.01, *** < 0.001, **** < 0.0001. [1] one outlier from early PD was removed based on ROUT Q= 0.1%; if including the outlier: p=0.0523. Lower and upper limit of quantification (LLOQ and ULOQ).

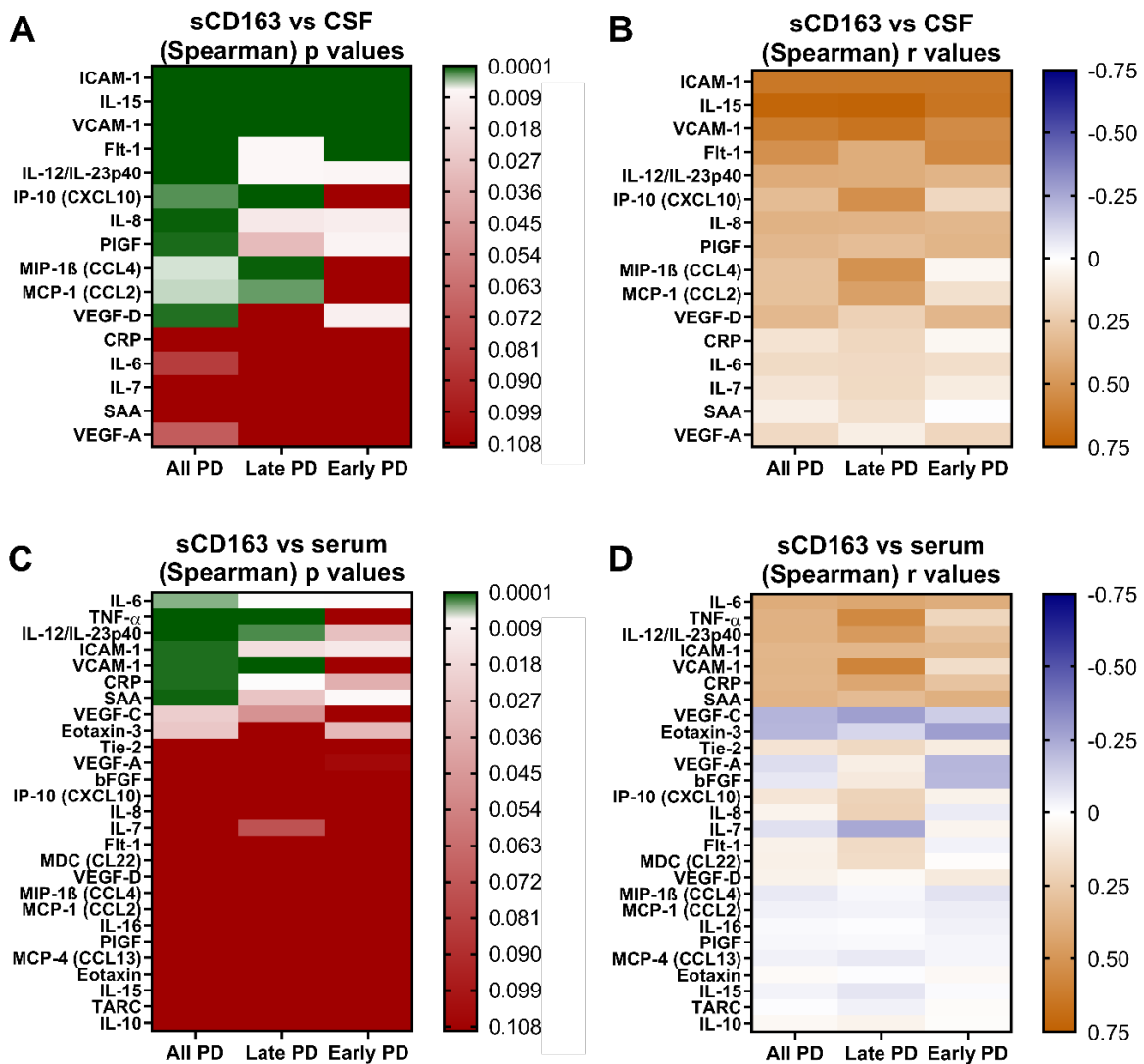


Figure 6 Correlation of sCD163 and additional biomarkers (cohort #2)

A-B) CSF- and **C-D)** serum-sCD163 were compared to all 40-plex biomarkers with values above lower limit of detection (LLOD) measured in CSF (n=16) and serum (n= 27), respectively. **A&C)** Spearman p value, the green colour shows those with a p value below the Bonferroni adjusted threshold ($p < 0.0031$ for CSF and $p < 0.0018$ for serum) and **B&D)** r values are plotted as heat maps. Correlations are done for all Parkinson's disease (PD) patients or separated as late (≥ 5 years since diagnosis) or early (< 5 years since diagnosis) PD status.

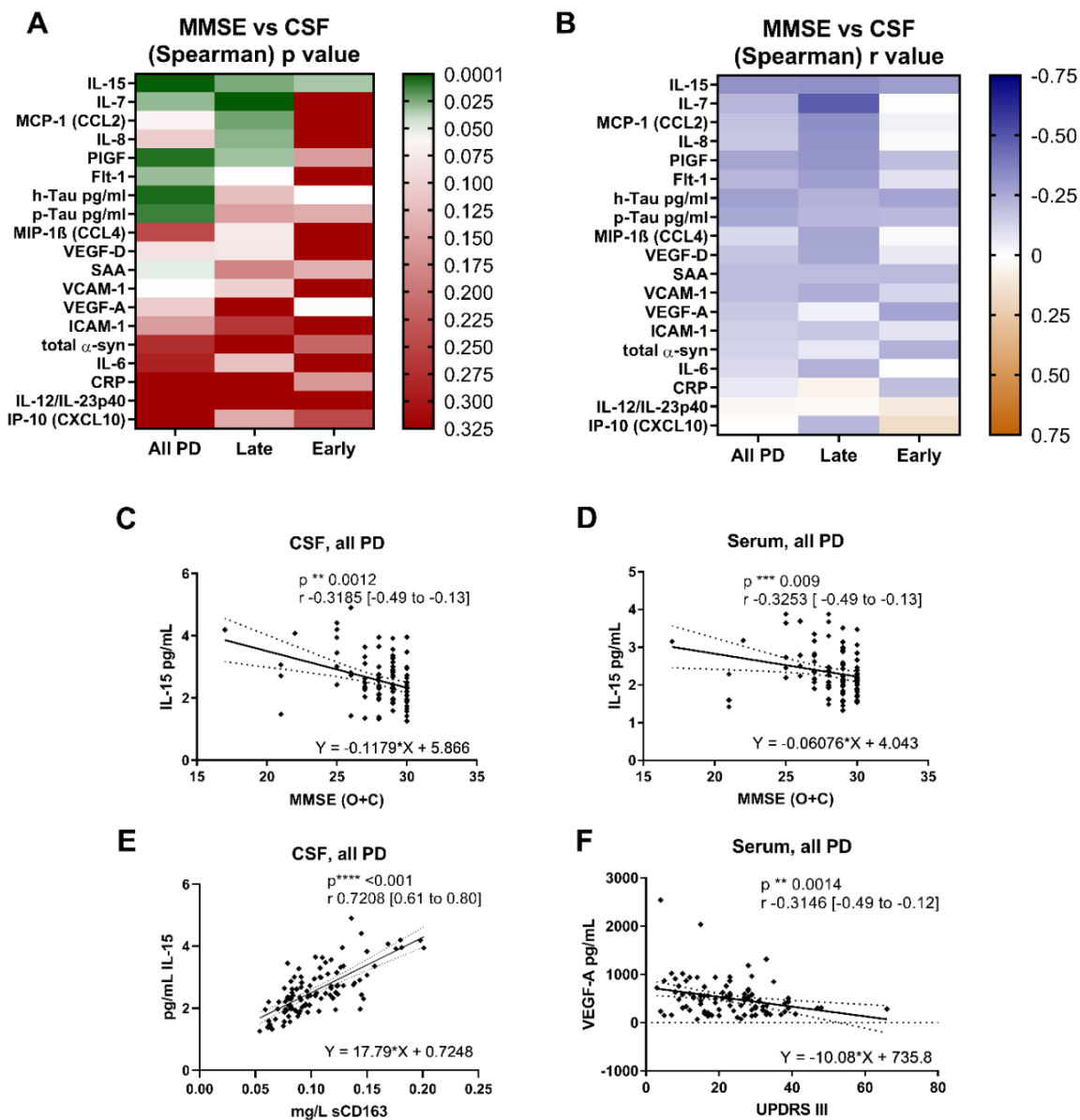


Figure 7 Correlation of cognition (MMSE (O+C)) with all CSF biomarkers (cohort #2)

A-B) CSF biomarkers with values above lower limit of detection (LLOD) are correlated to Mini-Mental State Exam (MMSE) (original scores + converted from Montreal Cognitive Assessment (MoCA) (O+C)) and plotted as heat maps for **A)** Spearman p and **B)** r values. Correlations are done for all Parkinson's disease (PD) patients or separated as late (≥ 5 years since diagnosis) or early (< 5 years since diagnosis) PD status. **C)** CSF IL-15 had the strongest correlation to MMSE O+C; plotted with the Spearman p and r [95% confidence interval (CI)] and the equation for the linear regression with a slope significantly different from 0. **D)** IL-15 was the only biomarker in serum with a significant correlation and linear regression to MMSE O+C. **E)** IL-15 in CSF had a strong correlation and linear regression to CSF-sCD163. **F)** VEGF-A measured in serum were the only biomarker (for both serum and CSF) with a significant correlation and linear regression to the Unified Parkinson's Disease Rating Scale three (UPDRS III) score. Spearman two-tail p values (* < 0.05 , ** < 0.01 , *** < 0.001 , **** < 0.0001).

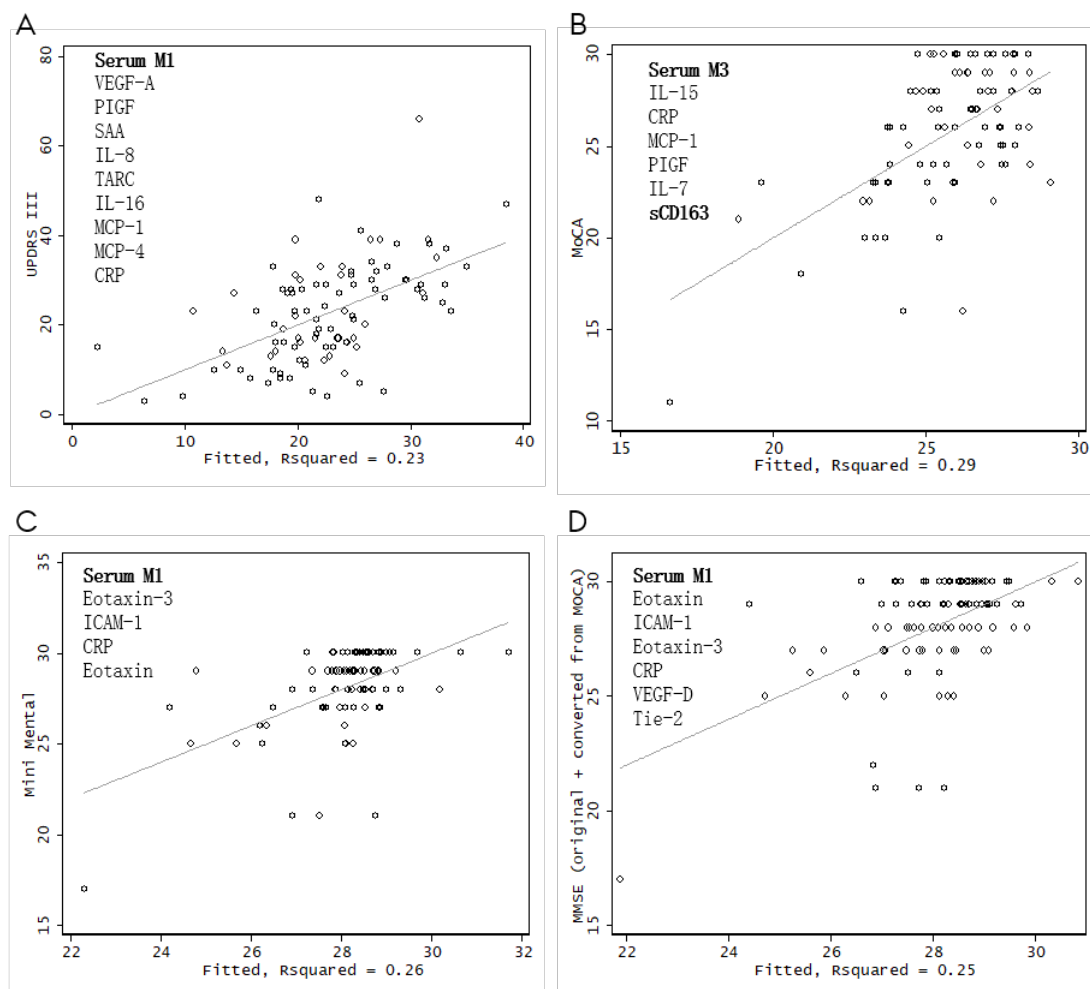


Figure 8 Serum, the goodness of fit from selected regression models Stepwise forward model strategies (**m1**: probability of entry is 0.1, probability of removal is 0.2; **m2**: probability of entry is 0.05, probability of removal is 0.1; **m3**: probability of entry is 0.1, probability of removal is 0.2, CD163 forced to be included) were used for a linear regression with robust variance component estimation for serum biomarkers with effect on PD progression scores: **A**) Unified Parkinson's Disease Rating Scale three (UPDRS III), **B**) Montreal Cognitive Assessment (MoCA), **C**) Mini Mental original score (MMSE O), or **D**) MMSE original score plus converted from MoCA (MMSE O+C). The models are compared using AIC and BIC and goodness of fit (R squared). The best models for each prediction score are plotted as fitted values versus measured values.

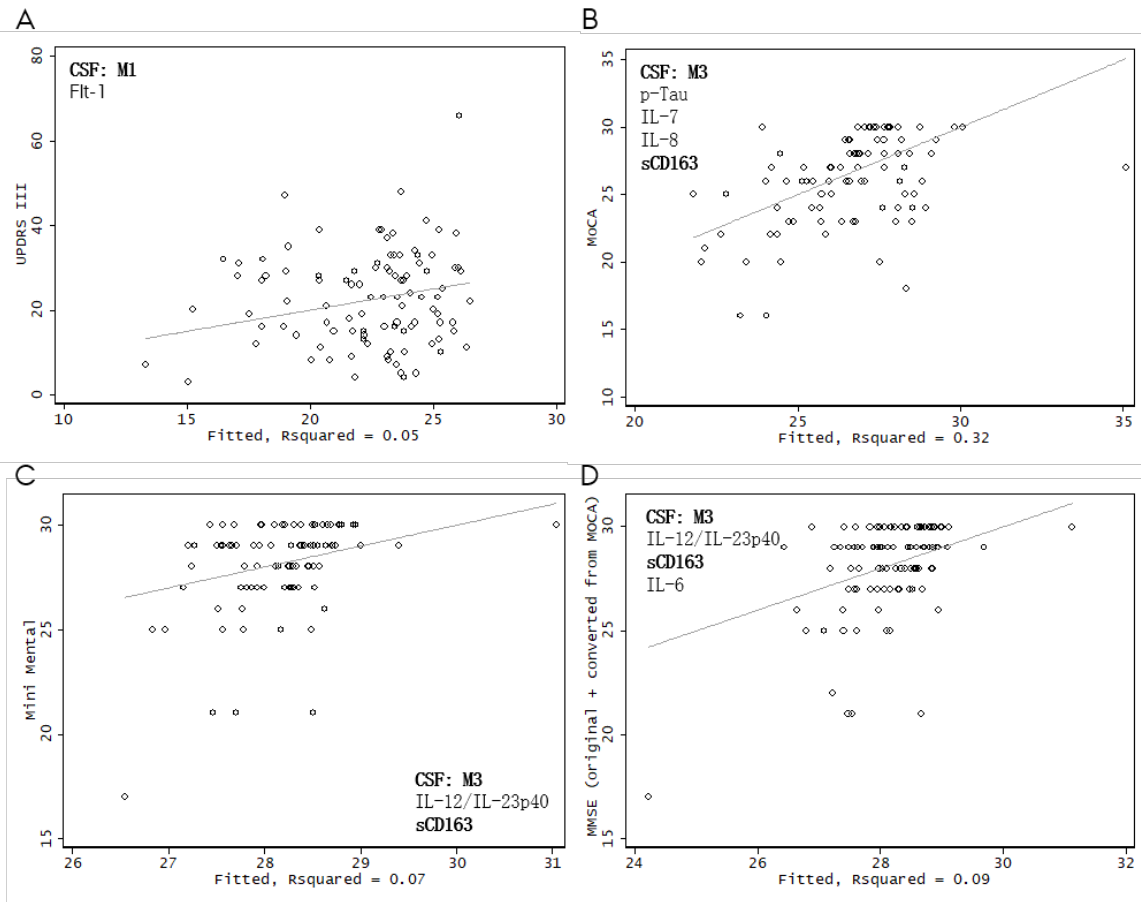


Figure 9 CSF, the goodness of fit from selected regression models Stepwise forward model strategies (**m1**: probability of entry is 0.1, probability of removal is 0.2; **m2**: probability of entry is 0.05, probability of removal is 0.1; **m3**: probability of entry is 0.1, probability of removal is 0.2, CD163 forced to be included) were used for a linear regression with robust variance component estimation for CSF biomarkers with effect on PD progression scores: **A**) Unified Parkinson's Disease Rating Scale three (UPDRS III), **B**) Montreal Cognitive Assessment (MoCA), **C**) Mini Mental original score (MMSE O), or **D**) MMSE original score plus converted from MoCA (MMSE O+C). The models are compared using AIC and BIC and goodness of fit (R squared). The best models for each prediction score are plotted as fitted values versus measured values.

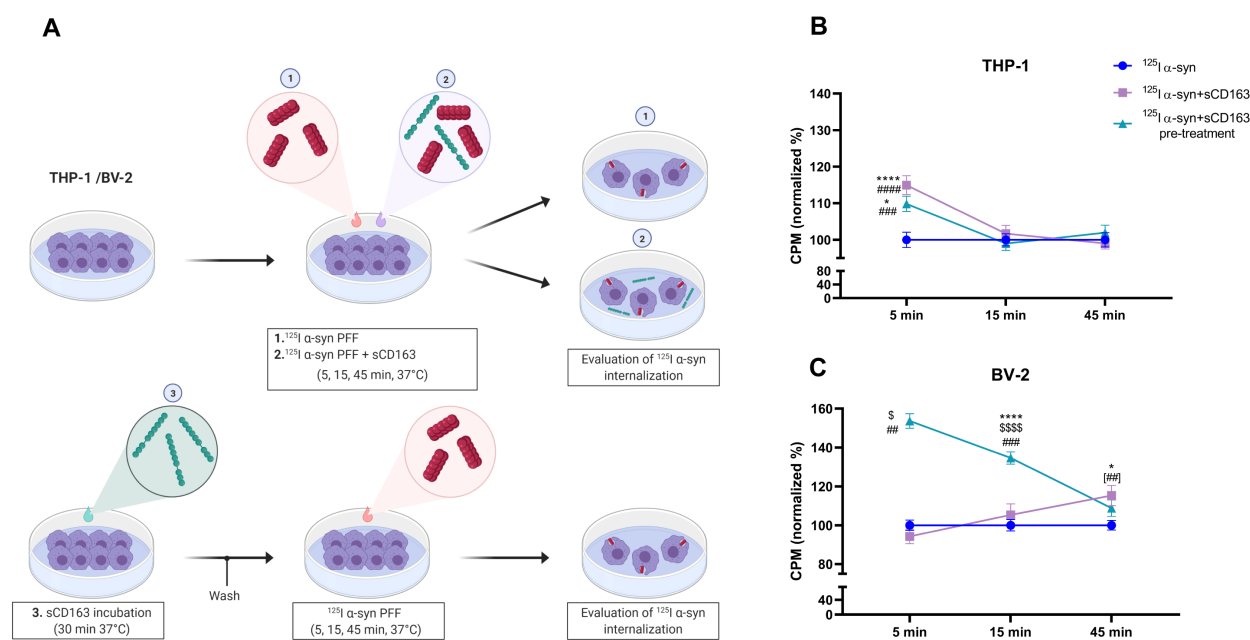


Figure 10 sCD163 increases α -syn uptake in mouse BV-2 microglia and human THP-1 macrophage-like monocytes. A) Experimental design: BV-2 and THP-1 cells were incubated at three different conditions: **1.** with iodine-labeled α -synuclein (¹²⁵I α -syn) (control); **2.** Co-incubated with ¹²⁵I α -syn and sCD163 (5 μ g/mL) and **3.** Pre-treated with sCD163 (5 μ g/mL) 30 min prior ¹²⁵I α -syn addition to the media. Cells were incubated for 5, 15, and 45 min after α -syn addition and collected for evaluation of α -syn internalization. Radioactive counts per minute (CPM) on THP-1 **B)** and BV-2 **C)** were normalized to α -syn average counts (treatment 1) and shown as % of control internalization. Statistics: Two-way ANOVA followed by post-hoc Tukey's multiple comparison test when appropriate. P values different to control (α -syn alone) at the same time point: * <0.05 **** <0.0001 ; \$ different to all other treatments at the same time-point. \$\$\$\$ <0.0001 ; # different to adjacent time point in the same treatment: ## <0.01 ### <0.001 ##### <0.0001 ; [##] difference to 5 min. Data is shown as mean \pm standard error of mean (SEM). Figure done using Biorender.