

Evaluating growth pattern and assessing future scenario of COVID-19 epidemic of India

Nandan L. Patil^{1*} and Lakshmi R. Gangavati¹

¹Department of Genetics and Plant Breeding,

College of Agriculture,

University of Agricultural Sciences,

Dharwad- 580 005.

* Corresponding author.

Email address: patilnads@gmail.com

1 **Abstract**

2 COVID-19 the modern pandemic has spread across the world at a rapid pace. SARS-CoV
3 2 is highly transmissible and the rate of infection is exponential for heavily infected countries.
4 Asymptomatic carriers and longer incubation period have been key towards such a large-scale
5 distribution of disease. Data released by official authorities on COVID-19 cases is significantly
6 affected by various factors such as size of sample, incubation period of disease and time taken to
7 test the sample. These factors mask the useful pattern (signal) of disease spread. Thus, an
8 ingenious method to group data into cycles of five and seven days, for studying pattern of
9 disease spread is undertaken. Occurrence of recurrent peaks as indicated by Adjusted Rate of
10 infection per day indicated the spread of disease has been non-uniform. Currently, India is yet to
11 reach the critical point (peak of epidemic) with adjusted daily cases more than 1000. Increasing
12 testing capacity along with random sampling and sample pooling can help in preventing
13 formation of these peaks in future. The proposed method helps in assessing the current state and
14 for predicting future scenarios epidemics.

15 **Key Words:** COVID-19, SARS-CoV 2, India, epidemic, rate of Infection, daily cases

16

17 **1. Introduction**

18 Novel coronavirus has swept the world at rapid pace with more than 3 million cases
19 across 185 countries since its first report on November, 2019 in Wuhan, China. The disease was
20 termed as Public Health Emergency by World Health Organization (WHO) on January 30, 2020
21 and further on 11 March was announced as pandemic. The pandemic has resulted in huge
22 economic cost, loss of jobs and resulting in largest global recession since The Great Depression

23 (Gopinath, 2020). The International Virus Classification Commission (ICTV) classified this
24 novel coronavirus as Severe Acute Respiratory Syndrome Coronavirus 2 (SARS-CoV-2) on
25 February 11, 2020 and on the same day WHO named the disease as COVID-19. Virus is
26 transmitted mainly through respiratory droplets and has high transmissibility rate but low
27 mortality unlike Middle Easter Respiratory Syndrome (MERS) and SARS-CoV 1 which have
28 high mortality rate. The mean incubation period of disease is 6.6 with range of 2.1 to 11.1
29 days (Backer et al., 2020, Huang et al., 2020). COVID-19 symptoms include aches and pains,
30 nasal congestion, runny nose, sore throat or diarrhea and needs technical tests such as RT-PCR,
31 Anti body testing or CRISPAR (Liu et al., 2020) to detect the virus. Many cases are reported
32 were no symptoms are visible but the person is tested positive for the virus. These asymptotic
33 people have been key for such a large scale spread of virus.

34 India reported its first case on 30 January, 2020 from Southern state of Kerala, who was a
35 returning student from Wuhan, China. Only three cases were reported up till 1 March and since
36 then the cases have increased exponentially and as of April 23, 27000 cases have to identified
37 with Maharashtra recording highest positive cases. The virus has entered the country through
38 foreign travelers coming mainly from China, Europe US and Gulf countries. Foreign flights were
39 stopped on 22 March and nation-wide lockdown was announced on 24 March for 21 days i.e. up
40 till 14 April which was further extended to 3 May. But large population of migrant workers had
41 returned to their native place during initial days of lockdown. Currently, in India, asymptotic
42 people with international travel history and all contacts of laboratory confirmed positive cases
43 are being tested for the virus mainly through RT-PCR. As of now there have been no effective
44 drugs or vaccine against the disease, thus identifying positive cases and isolating/treating them is
45 effective option.

46 Compartmental models namely SIR (Susceptible, Infectious and Recovered) models and
47 their modification (Giordano et al., 2020, Wu et al., 2020, Prem et al., 2020) are widely used in
48 analyzing the epidemiological data. Furthermore, statistical models such as ARIMA and neural
49 networks (Wei et al., 2016, Anne and Jeeva, 2020, Ceylan, 2020) are used in forecasting the
50 COVID-19 cases. These models become complex when a high number of parameters are
51 involved. Thus, here we formulate a simple statistical method to study the growth of epidemics
52 and predict future scenarios based on only the positive cases reported.

53 **2. Methodology**

54 Data of positive cases for COVID-19 epidemic was collected from Johns Hopkins
55 University Center for Systems Science and Engineering (JHU CSSE, 2020) starting from 22
56 February up to 23 April.

57 Let the first day *i.e.* February 22 be d_1 , February 23 d_2 and so on with d_n being n^{th} day from
58 the first day.

59 $cc_1, cc_2, cc_3, \dots, cc_n$ is number of cumulative cases (cc) for the $d_1, d_2, d_3, \dots, d_n$ day and
60 $dc_1, dc_2, dc_3, \dots, dc_n$ is number of daily cases (dc) for $d_1, d_2, d_3, \dots, d_n$ day.

61

62 i) Estimating Unadjusted Rate of Infection(UR_d):

63

$$UR_d = \frac{dc_n}{dc_{(n-1)}} \times 100$$

64 where,

65 UR_d is Unadjusted **R**ate of Infection for d^{th} day estimated from raw data,

66 dc_n is number of positive cases for n^{th} day,

67 $dc_{(n-1)}$ is number of positive cases for $(n-1)^{\text{th}}$ day

68 Cumulative cases (cc) or daily cases (dc) reported by official authorities is a mixture of
 69 both useful signal and noise. A clear pattern of epidemic growth cannot be ascertained from the
 70 raw data itself. Thus, in order to obtain a clear picture of epidemic growth and to minimize the
 71 noise (sampling effect) in the data we group the data based on five day and seven day cycle to
 72 estimate new coefficients R_{cmi} and Adc_n as described below.

73 Let ‘c’ be the number of days in a given cycle, then number of possible combinations the
 74 data can be grouped is equal to ‘m’ which are repeated over ‘i’ intervals where ‘m’ is equal to
 75 ‘c’. These combinations are referred to as Models from henceforth. In the current study we group
 76 the data in cycle of five days (5D) and seven days (7D).

77 ii) Total positive cases for m^{th} model during i^{th} interval for cycle of seven days (c=7) is
 78 calculated as follows,

79
$$PCI_{711} = d_1 + d_2 + \dots + d_7$$

80
$$PCI_{721} = d_2 + d_3 + \dots + d_8$$

81
$$\cdot \quad \cdot$$

82
$$\cdot \quad \cdot$$

83
$$\cdot \quad \cdot$$

84
$$PCI_{771} = d_7 + d_3 + \dots + d_{13}$$

85

86 For ‘c’ day cycle,

$$PCI_{cmi} = \sum_{n=c(i-1)+m}^{m+ci-1} dc_n$$

87 where,

88 $c = 1, 2, 3, \dots, c$ and $m = 1, 2, 3, \dots, m$ and $i = 1, 2, 3, \dots$

89 PCI_{cmi} is **P**ositive **C**ases of m^{th} model during i^{th} Interval for ‘ c ’ day cycle

90 dc_n is number of **d**aily **c**ases for n^{th} day

91 iii) Estimating Rate of infection per ‘ c ’ day cycle (R_{cmi}):

$$R_{cmi} = \frac{PCI_{cmi}}{PCI_{cm(i-1)}} \times 100$$

92 where,

93 R_{cmi} is **R**ate of **I**nfection for i^{th} interval of m^{th} model for ‘ c ’ day cycle

94 PCI_{cmi} is Positive Cases of m^{th} model during i^{th} interval for ‘ c ’ day cycle

95 $PCI_{cm(i-1)}$ is Positive Cases of m^{th} model during $(i-1)^{\text{th}}$ interval for ‘ c ’ day cycle

96 iv) Estimating the Adjusted Rate of infection per day (AR_{cn}):

97 The **A**ddjusted **R**ate of **I**nfection of n^{th} day for ‘ c ’ day cycle (AR_{cn}) is calculated as,

98
$$AR_{c1} = \frac{R_{c11}}{c}$$

99
$$AR_{c2} = \frac{R_{c11}}{c} + \frac{R_{c21}}{c}$$

100
$$AR_{c3} = \frac{R_{c11}}{c} + \frac{R_{c21}}{c} + \frac{R_{c31}}{c} \quad \text{and so on}$$

101 v) Calculation of Adjusted daily cases (Adc_n):

102 The Adjusted daily cases for 'c' day cycle for nth day (Adc_n) is calculated as,

103

104
$$Adc_1 = \frac{PCI_{c11}}{c}$$

105
$$Adc_2 = \frac{PCI_{c21}}{c} + \frac{PCI_{c11}}{c}$$

106
$$Adc_3 = \frac{PCI_{c31}}{c} + \frac{PCI_{c21}}{c} + \frac{PCI_{c11}}{c}$$
 and so on.

107 The unadjusted daily cases (Udc_n) is defined as daily cases calculated from official record i.e.

108 $dc_1, dc_2, dc_3 \dots$

109 **2.1 Outliers**

110 If the magnitude of $PCI_{cm(i-1)}$ is less than 10 it leads to greater R_{cmi} which effects the
111 AR_{cn} and masks pattern in the growth of epidemic. Thus, if $PCI_{cm(i-1)} < 10$, then respective
112 R_{cmi} are removed from analysis.

113 **2.2 Critical Point**

114 Critical point is defined as a stage where the R_{cmi} or adjusted daily cases (AR_{cn}) are equal
115 to 100 and $\frac{100}{c}$, respectively. In other words, critical point refers to period past the peak of the
116 epidemic curve. The AR_{cn} critical point for 5D and 7D cycle is 25 and 14.29, respectively.

117 **2.3 Classifying the growth of epidemic period**

118 Based on the critical point, the epidemic period can be classified into two phases,

119 **a. Growth phase:** It is the initial phase where epidemic has not yet reached the critical point.
120 During this period of epidemic during which the number of daily cases is continuously
121 rising and epidemic is yet to reach its peak stage.

122 **b. Safe phase:** It is the phase after passing the critical point or peak of epidemic when the
123 daily cases are continuously decreasing.

124 **2.4 Prediction of AR_{cn} values**

125 ARIMA is a statistical method to forecast time series data which was proposed by Box
126 and Jenkins in 1970. These models have been commonly used to forecast COVID-19 positive
127 cases (Benvenuto et. al., 2020, Ceylan, 2020, Anne and Jeeva, 2020). ARIMA model was used to
128 forecast the AR_{cn} value of 5D and 7D cycle. The three best fitting parameters of ARIMA model
129 p (order of autoregression), d (degree of difference) and q (order of moving average) were (2, 0,
130 0) and (3, 2, 1) for 5D and 7D cycle selected based on root mean square error (RMSE).
131 Furthermore, univariate Neural Network Models (NNM) were used in predicting the AR_{cn} of 5D
132 and 7D cycle by using *forecast* package in R.

133 **3. Result and Discussion**

134 COVID-19 pandemic has caused large scale disruption of normal life with nationwide
135 lockdown being imposed to control spread of virus. We have analyzed the data in a novel way to
136 understand growth of virus and anticipate future conditions. Unadjusted rate of infection per day
137 (UR_d) plot (Figure 1) estimated from raw data shows continuous fluctuation throughout the
138 epidemic period. No growth pattern of disease can be delineated from the plot. The reason for
139 such fluctuation is that raw data is a mixture of both useful signal which represents growth of
140 epidemic along with redundant noises which mask the signal. The noise in the data arises due to

141 various reasons such as sampling size, time taken to test the sample, time taken to trace the
142 contacts and incubation period for the patient. Thus, making it impossible to assess present
143 situation and predict future conditions using UR_d plots.

144 **3.1 Analyzing Adjusted Rate of Infection per day (AR_{cn})**

145 In order to reduce the noise embedded in raw data, we grouped raw data into 7D and 5D
146 cycle and estimated the adjusted rate of infection per day. AR_{cn} plot (Fig. 2 and Fig. 3) for 7D
147 and 5D cycle reveals the pattern of spread of Epidemic. The Epidemic period can be classified
148 into four and three phases (Table 1) as per AR_{cn} of 5D and 7D cycle respectively. Phase 1 (5D)
149 was from 5 March to 16 March, with peak on 14 March and Phase 2 (5D) from 17 March to 28
150 March with peak on 21 March. The first two phases of 5D combine to form Phase 1 of 7D cycle
151 which was from 5 March to 29 March with peak on 22 March. During these initial stages of
152 epidemic, the virus is difficult to detect due to high incubation period, asymptomatic carriers and
153 technical tests to detect the virus. Thus, the virus spreads can spread unnoticed if proper
154 preventive measures are not undertaken. With increase in testing capacity a greater number of
155 COVID-19 cases are detected in short time leading to formation of peak on 22 April.

156 Phase 3 (5D) from 29 March to 8 April with peak on 2 April and Phase 2 (7D) 30 March
157 to 13 April with peak on 3 April can be attributed to Tablighi Jamaat congregation which was
158 held in New Delhi during mid-March. Many of the attendees have been tested positive. Finally,
159 we observe another peak on 13 April under Phase 4 (5D) starting from 10 April. In a AR_{cn} plot
160 the new peaks formed are more severe than that of early ones. Meaning peak of Phase 4 (5D) is
161 more severe than peak of Phase 3 (5D) and Phase 2 (7D) which is further more severe than peak
162 of Phase 1 (7D) or Phase 2 (5D). The 5D cycle detected a greater number of peaks than 7D cycle
163 as it is more sensitive to sudden increase in cases within short period of time. The recurrent

164 peaks which we observe in AR_{cn} plots may be attributed to limited coverage of testing facility
165 which allows the virus to spread through asymptomatic carriers.

166 **3.2 Impact of Nationwide lockdown**

167 Nationwide shutdown started from 24 March and is scheduled to be lifted on May 3. As
168 seen from the AR_{cn} plot the rate of new infection starts to decrease after its peak on March 22.
169 The nationwide lockdown has significantly slowed the spread of virus, but it should be followed
170 by wide scale testing in order to identify the infected people. Delay in action or lack of testing
171 would lead to increase in AR_{cn} or under more severe conditions new peaks are formed.

172 **3.3 Analyzing R_{cmi} plots**

173 R_{cmi} represents change in rate of infection for a given days of cycle. When the spread is
174 constant the R_{cmi} of all models for any days of cycle start converging and continue in same
175 direction. But when growth is non-uniform the models start bisecting each other.

176 For seven-day cycle R_{cmi} plot (Fig. 4) highest value is 521 of Model 7 for interval March
177 20 to March 26 which coincides with peak of Phase 1 (7D). The models are continuously
178 bisecting each other indicating the spread or detection of virus has not been uniform. Similarly,
179 R_{cmi} plot of five-day cycle indicates same trend of bisecting models with highest value of
180 455.263 for interval March 20 to March 24 coinciding with peak of Phase 2 (5D). As seen from
181 the analysis of other countries (not shown) the Models tend to converge (or are close to each
182 other) before reaching the critical point.

183 **3.4 Adjusted daily cases (Adc_n)**

184 Adc_n accommodates the fluctuation in the original data to produce a smooth curve
185 representing increase in daily cases. India passed Adc_n (Fig. 5) of 1,000 on 14 April and as of 18
186 April, with current Adc_n being 1173 and 1164 as calculated from 5D and 7D cycle respectively.
187 Adc_n is continuously increasing during growth phase whereas starts decreasing once in safe
188 phase. Thus, delay in reaching the critical point enhances the severity of Epidemic.

189 **3.5 Future course of Epidemic**

190 ARIMA model forecasted (Fig. 6) formation of peak on 28 April for AR_{cn} of 5D cycle
191 whereas for 7D cycle it forecasted a gradual decrease. Similarly, neural network model (NNM)
192 forecasted (Fig. 7) towards formation of peak on 30 April for 5D cycle and gradual increase in
193 AR_{cn} for 7D cycle.

194 As seen from the R_{cmi} plot, though the rate of infection decreasing it the rate at which it
195 is decreasing is slowing down. The last R_{cmi} value for 7D cycle increased from 128.22 (R_{769}) to
196 129.69 (R_{779}), similar trend was observed for 5D cycle which indicates a possible rise COVID-
197 19 positive cases. Presently India is in growth stage where Adc_n is continuously rising. With
198 recurrent peaks occurring, India may not reach critical point within May 3, the scheduled date to
199 end the nationwide lockdown. Reducing R_{cmi} and AR_{cn} can be achieved through rigorous
200 contact tracing and alternate testing methods such as Rapid antibody testing, CRISPAR (Liu et
201 al., 2020) and sample pooling method (Hogan et al., 2020) can be useful for a large nation as
202 India.

203 **3.6 Limitations of the method**

204 As of other statistical methods there are few limitations for the present method. When the
205 spread of disease is slow the AR_{cn} and R_{cmi} plot can't depict the pattern of disease spread. Thus,

206 the method is useful where local transmission or community spread of disease is prevalent.
207 Pattern of disease spread is delineated by the method is based on reported data and doesn't
208 consider the underlying unreported cases.

209 **4. Conclusion**

210 AR_{cn} and R_{cmi} plots help us in understanding the pattern of Epidemic and predicting the
211 future scenario by minimizing the noise using in the raw data. The growth of epidemic in India
212 has been non-uniform and is currently growing in linear fashion with Adc_n crossing 1,000.
213 Lockdown combined with greater testing capacity is crucial to contain the spread of novel
214 coronavirus. In the current study, we employed ingenious method to classify data into 5D and 7D
215 cycle to assess spread of virus and predict the future progression of epidemic. The method is
216 simple and robust which uses publicly and most commonly available data.

217 **Acknowledgements**

218 The authors are thankful to all resource persons for their useful suggestions. No funding to
219 declare.

220 **Conflict of Interest**

221 The authors declare no conflict of interest.

222 **References:**

223 Anne,R., and Jeeva, Carolin S., 2020. ARIMA modelling of predicting COVID-19 infections.
224 *medRxiv*. <https://doi.org/10.1101/2020.04.18.20070631>.

- 225 Backer, J. A., Klinkenberg, D. and Wallinga, J., 2020. Incubation period of 2019 novel
226 coronavirus (2019-nCoV) infections among travelers from Wuhan, China, 20–28 January
227 2020. *EuroSurveillance*, 25(5), 2000062. [https://doi.org/10.2807/1560-](https://doi.org/10.2807/1560-917.ES.2020.25.5.2000062)
228 [917.ES.2020.25.5.2000062](https://doi.org/10.2807/1560-917.ES.2020.25.5.2000062).
- 229 Benvenuto, D., Giovanetti, M., Vassallo, L., Angeletti, S., Ciccozzi, M., 2020. Data in brief
230 application of the ARIMA model on the COVID- 2019 epidemic dataset. *Data Br*
231 29,105340. <https://doi.org/10.1016/j.dib.2020.105340>.
- 232 Ceylan, Z., 2020. Estimation of COVID-19 prevalence in Italy, Spain, and France. *Sci. Total*
233 *Environ.* 729,138817. <https://doi.org/10.1016/j.scitotenv.2020.138817>.
- 234 Giordano, G., Blanchini, F., Bruno, R., Colaneri, P., DiFilippo, A., DiMatteo, A. and Colaneri,
235 M., 2020. Modelling the COVID-19 epidemic and implementation of population
236 wide interventions in Italy. *Nature Medicine*. 1-6. [https://doi.org/10.1038/s41591-020-0883-](https://doi.org/10.1038/s41591-020-0883-7)
237 [7](https://doi.org/10.1038/s41591-020-0883-7).
- 238 Gopinath, G., 2020. The Great Lockdown: Worst economic downturn since the Great Depression, Internatio
239 nal Monetary Fund (IMF), Insights and analysis on economics and finance. [https://blogs.imf.org/2](https://blogs.imf.org/2020/04/14/the-great-lockdown-worst-economic-downturn-since-the-great-depression)
240 [020/04/14/the-great-lockdown-worst-economic-downturn-since-the-great-depression](https://blogs.imf.org/2020/04/14/the-great-lockdown-worst-economic-downturn-since-the-great-depression).
- 241 Hogan, C. A., Sahoo, M. K. and Pinsky, B. A., 2020. Sample pooling as a strategy to detect community
242 transmission of SARS-CoV-2. *JAMA*. <http://doi.org/10.1001/JAMA.2020.5445>.

- 243 Huang, C., Wang, Y., Li, X., Ren, L., Zhao, J., Hu, Y., Zhang, L., Fan, G., Xu, J., Gu, X. and Cheng, Z., 2020.
244 Clinical features of patients infected with 2019 novel coronavirus in Wuhan, China. *The*
245 *Lancet*. 395(10223), 497-506. [https://doi.org/10.1016/S0140-6736\(20\)30183-5](https://doi.org/10.1016/S0140-6736(20)30183-5).
- 246 JHU CSSE, 2020. Covid-19 Dashboard, COVID-19 Map - Johns Hopkins Corona virus
247 Resource Center. <https://coronavirus.jhu.edu/map.html>
- 248 Liu, R., Fu, A., Deng, Z., Li, Y. and Liu, T., 2020. Promising methods for detection of novel
249 coronavirus SARS-CoV-2. *View. 1(1)*. <https://doi.org/10.1002/viw2.4>.
- 250 Prem, K., Liu, Y., Russell, T. W., Kucharski, A. J., Eggo, R. M., Davies, N., Flasche, S., Clifford, S., Pearso
251 n, C. A., Munday, J. D. and Abbott, S., 2020. The effect of control strategies to reduce social mixing
252 on outcomes of the COVID-19 epidemic in Wuhan, China: a modelling study. *The Lancet*
253 *Public Health*. [https://doi.org/10.1016/S2468-2667\(20\)30073-6](https://doi.org/10.1016/S2468-2667(20)30073-6).
- 254 Wei, W., Jiang, J., Liang, H., Gao, L., Liang, B., Huang, J., Zang, N., Liao, Y., Yu, J., Lai, J. and Qin, F., 2016.
255 Application of a combined model with autoregressive integrated moving average
256 (ARIMA) and generalized regression neural network (GRNN) in forecasting hepatitis
257 incidence in Heng County, China. *PloS one*, 11(6).
258 <https://doi.org/10.1371/journal.pone.0156768>.
- 259 Wu, J. T., Leung, K. and Leung, G. M., 2020. Nowcasting and forecasting the potential domestic
260 and international spread of the 2019-nCoV outbreak originating in Wuhan, China: a
261 modelling study. *The Lancet*. 395(10225), 689-697. [https://doi.org/10.1016/S0140-](https://doi.org/10.1016/S0140-6736(20)30260-9)
262 [6736\(20\)30260-9](https://doi.org/10.1016/S0140-6736(20)30260-9).

263

264

265

Table 1. List of Phases as delineated by AR_{cn} of 5D and 7D cycle for India

5D cycle					7D cycle				
	Start	End	Peak	Total cases		Start	End	Peak	Total cases
Phase 1	5 March	16 March	4 March	90	Phase 1	5 March	29 March	22 March	996
Phase 2	17 March	28 March	21 March	800					
Phase 3	29 March	9 April	2 April	4947	Phase 2	30 March	13 April	3 April	8328
Phase 4	10 April	-	13 April	15835*	Phase 3	14 April	-	-	12348*

* as of 23 April

Unadjusted Rd Plot

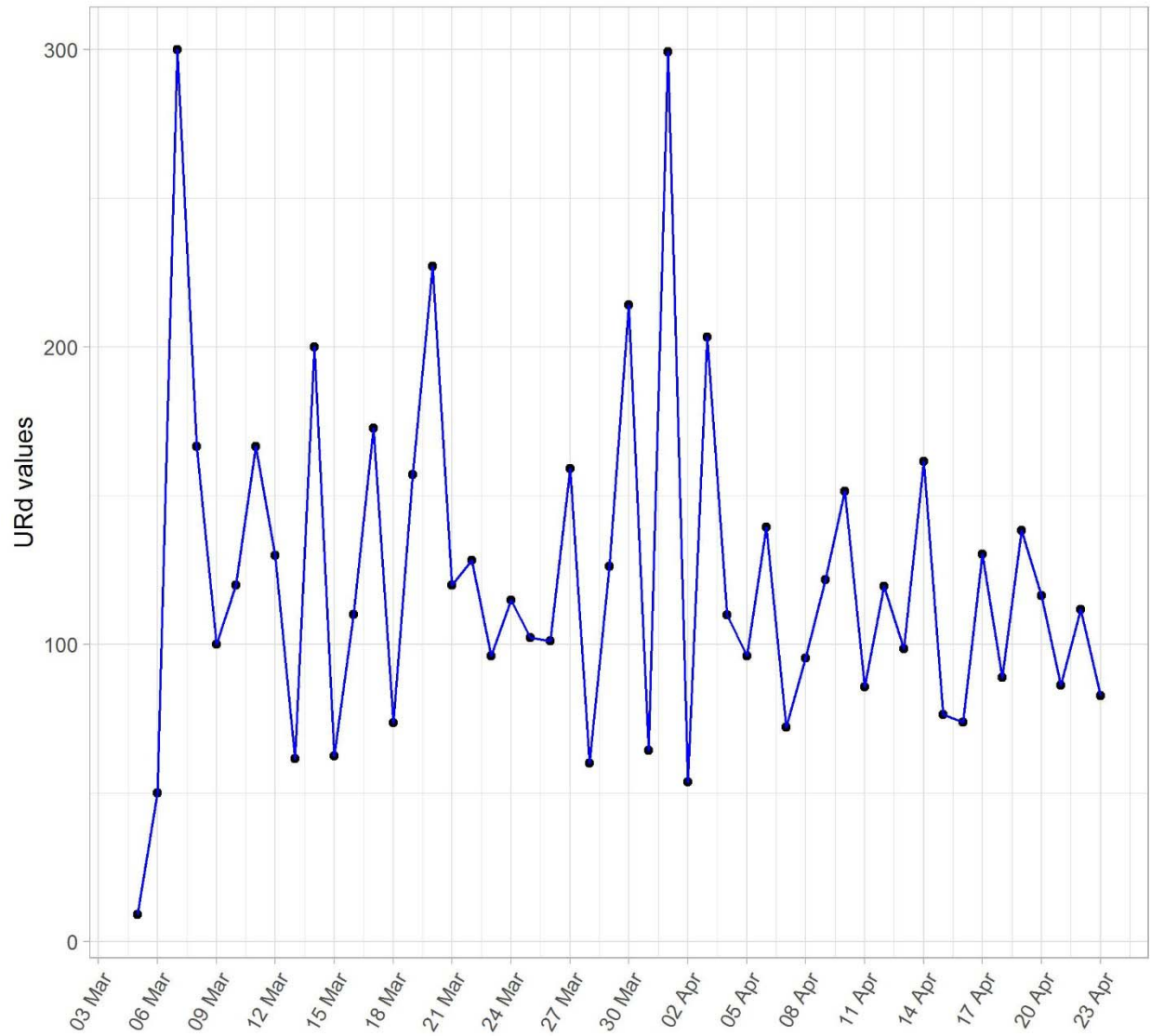


Figure 1. Unadjusted AR_{cn} from 5 March to 23 April.

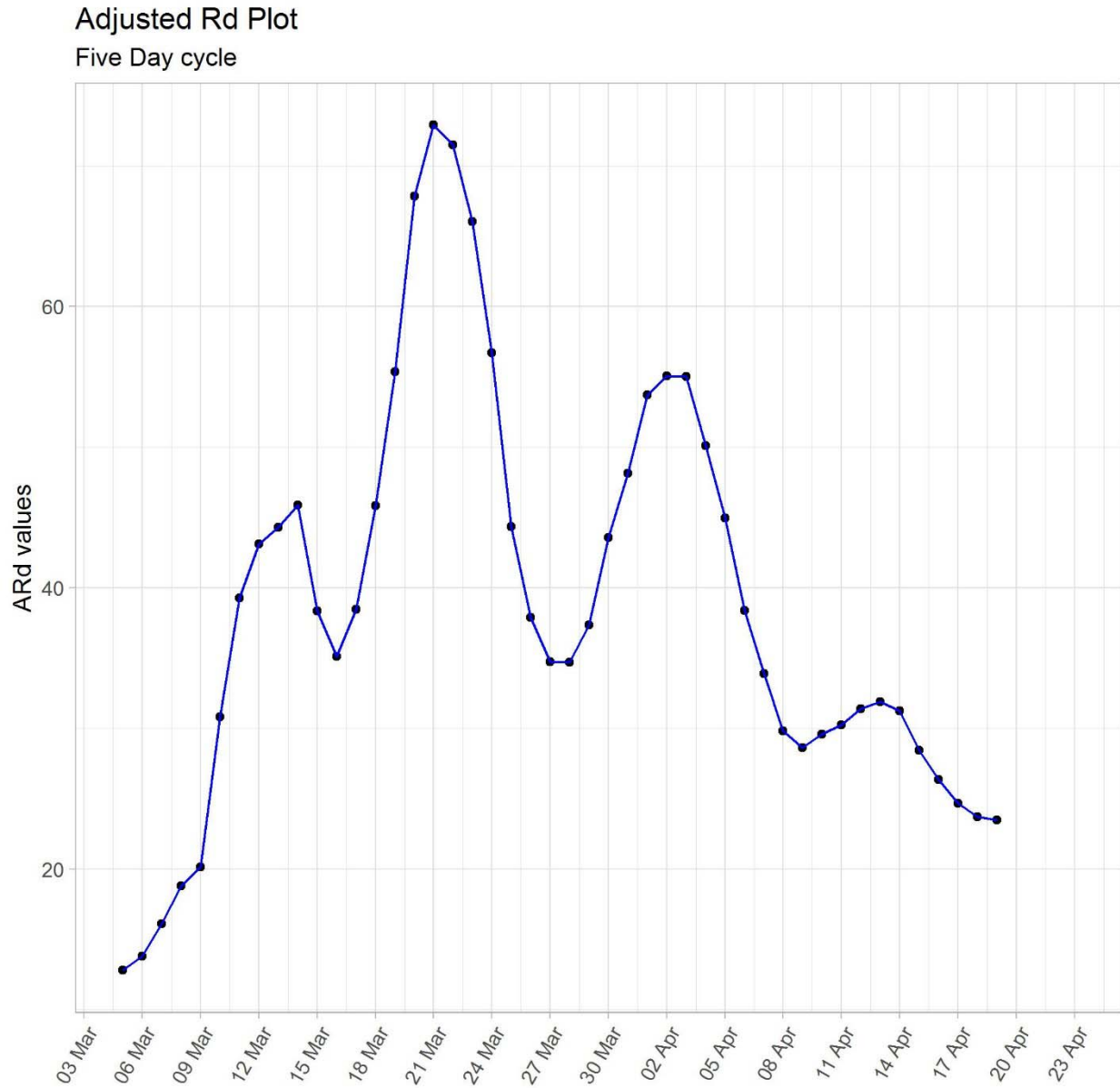


Figure 2. AR_{cn} plot for five day (5D) cycle from 5 March to 19 March.

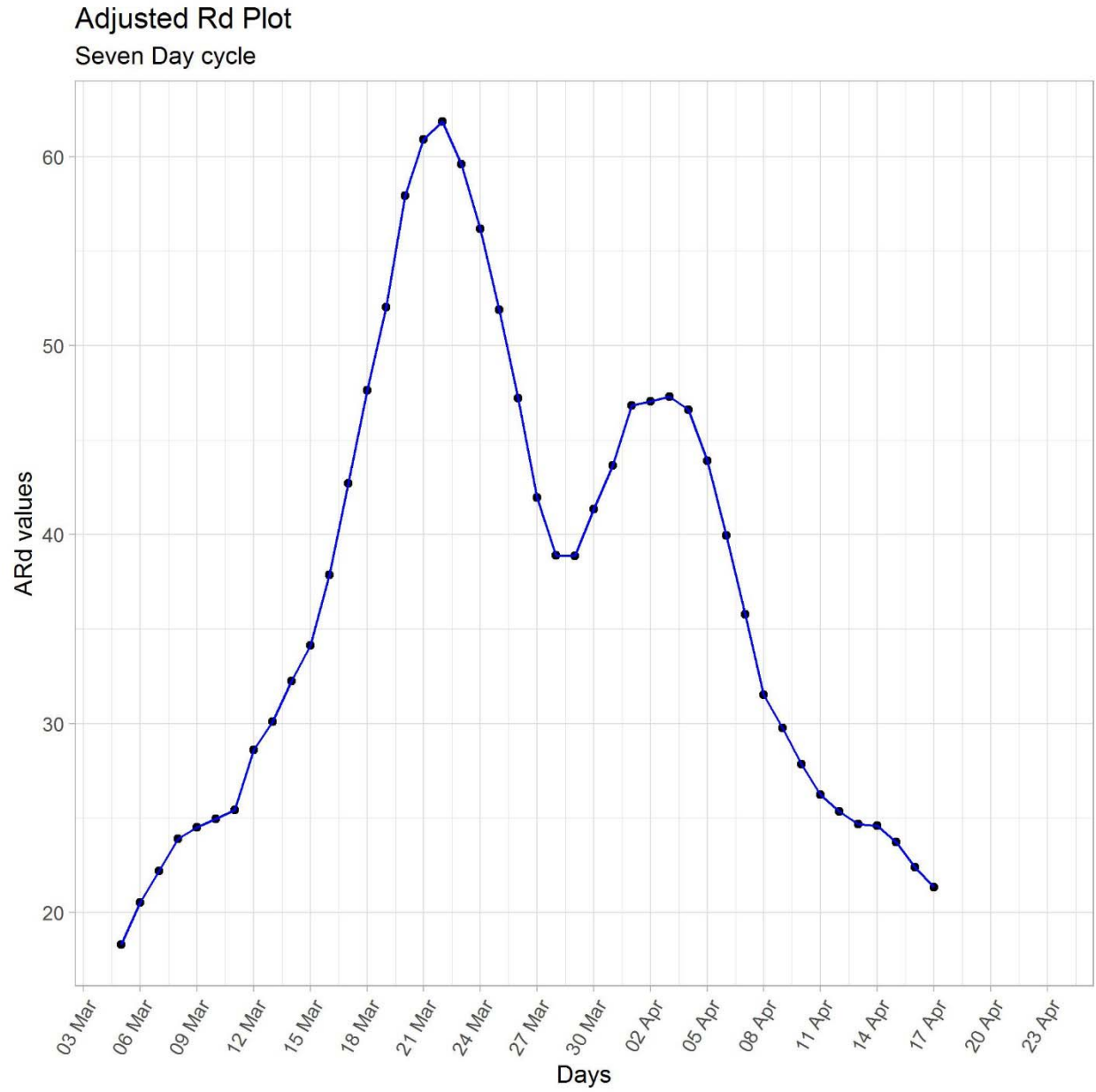


Figure 3. AR_{cn} plot for seven day (7D) cycle from 5 March to 17 March.

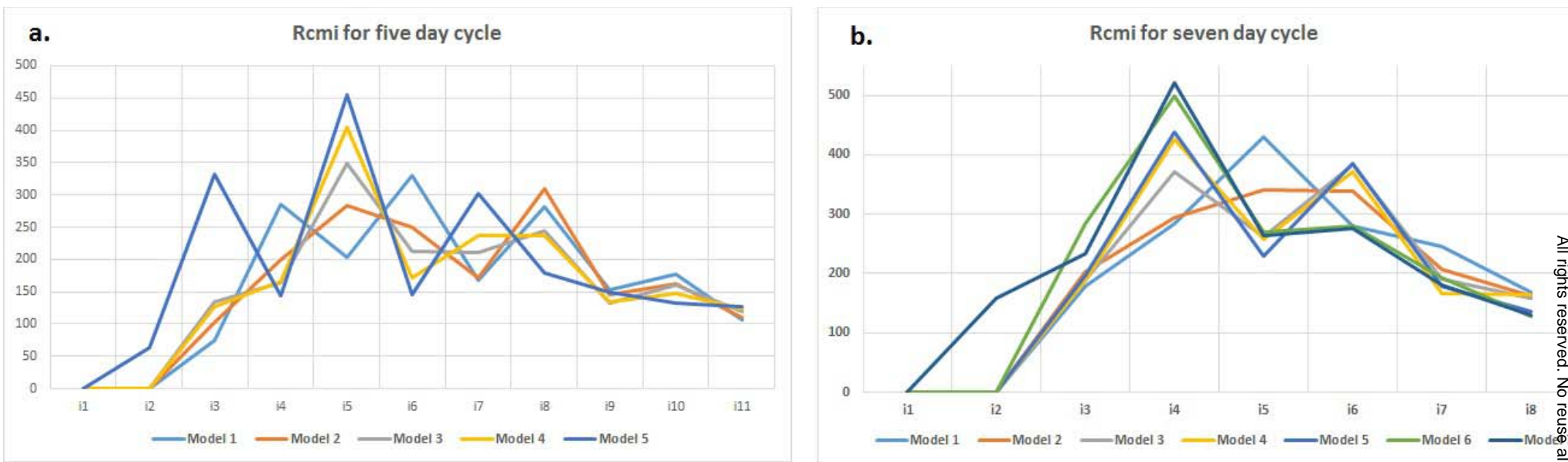


Figure 4. a) R_{cmi} plots for five day cycle (5D) across 11 intervals, b) R_{cmi} plot for seven days cycle (7D) across 8 intervals

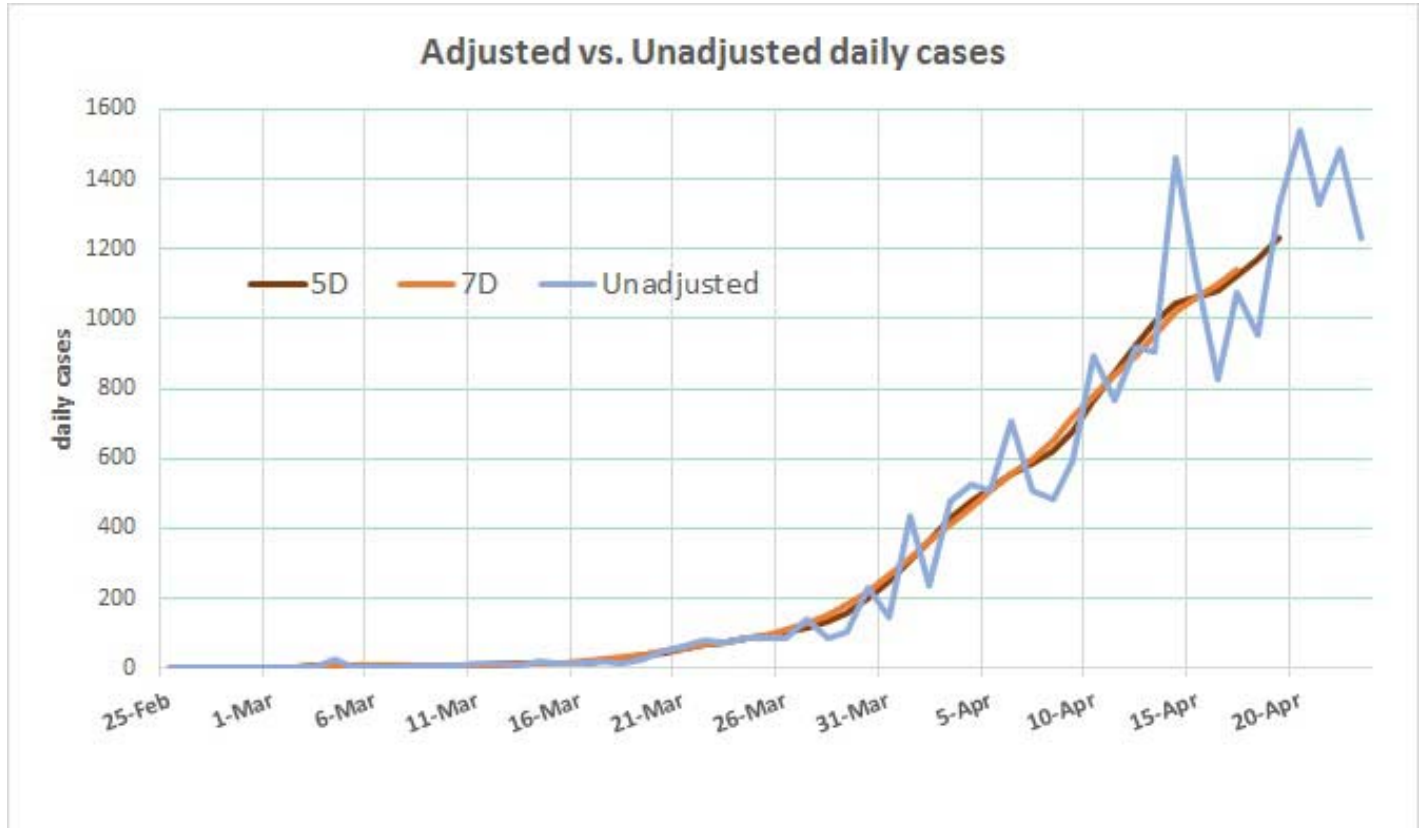


Figure 5. Plot of Unadjusted daily cases (Udc_n) (up to 23 April) and Adjusted daily cases (Adc_n) estimated from 5D cycle (up to 19 April) and 7D cycle (17 April).

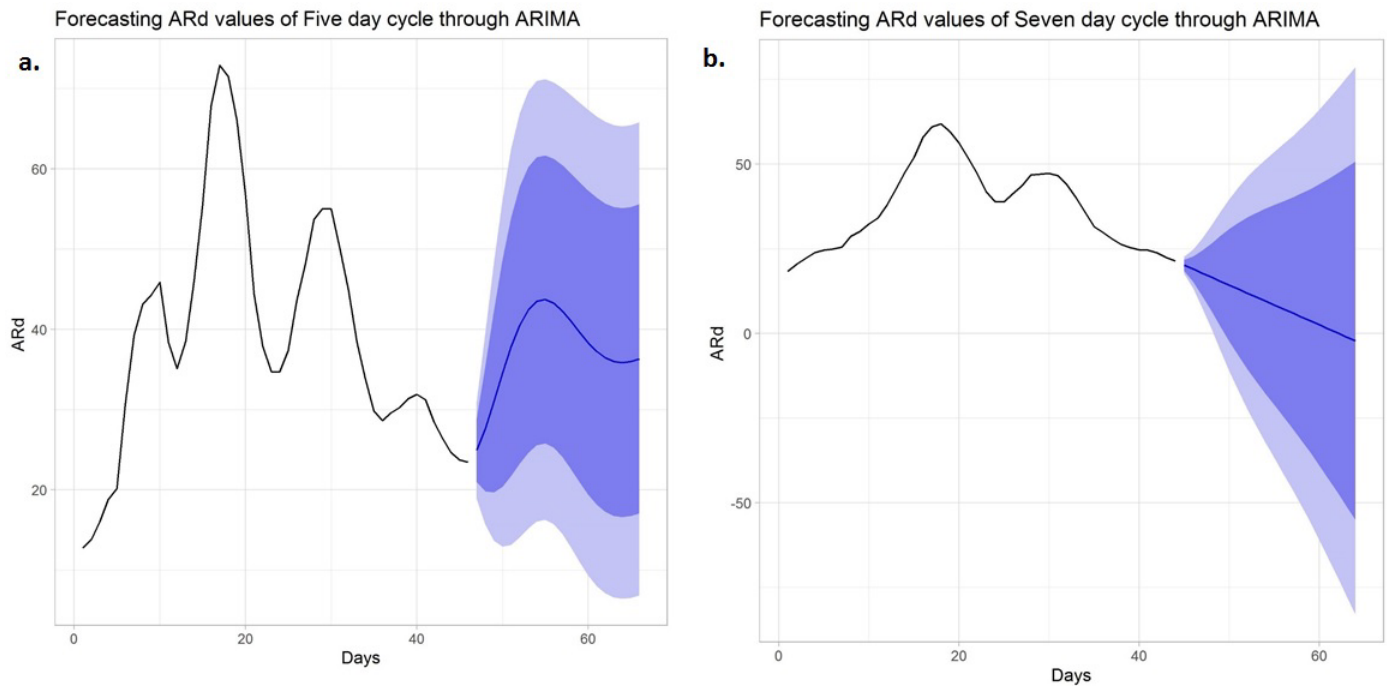


Figure 6. Forecasting AR_{cn} for five day cycle (5D) 20 March to 9 May and seven day cycle (7D) from 18 March to 7 May through ARIMA.

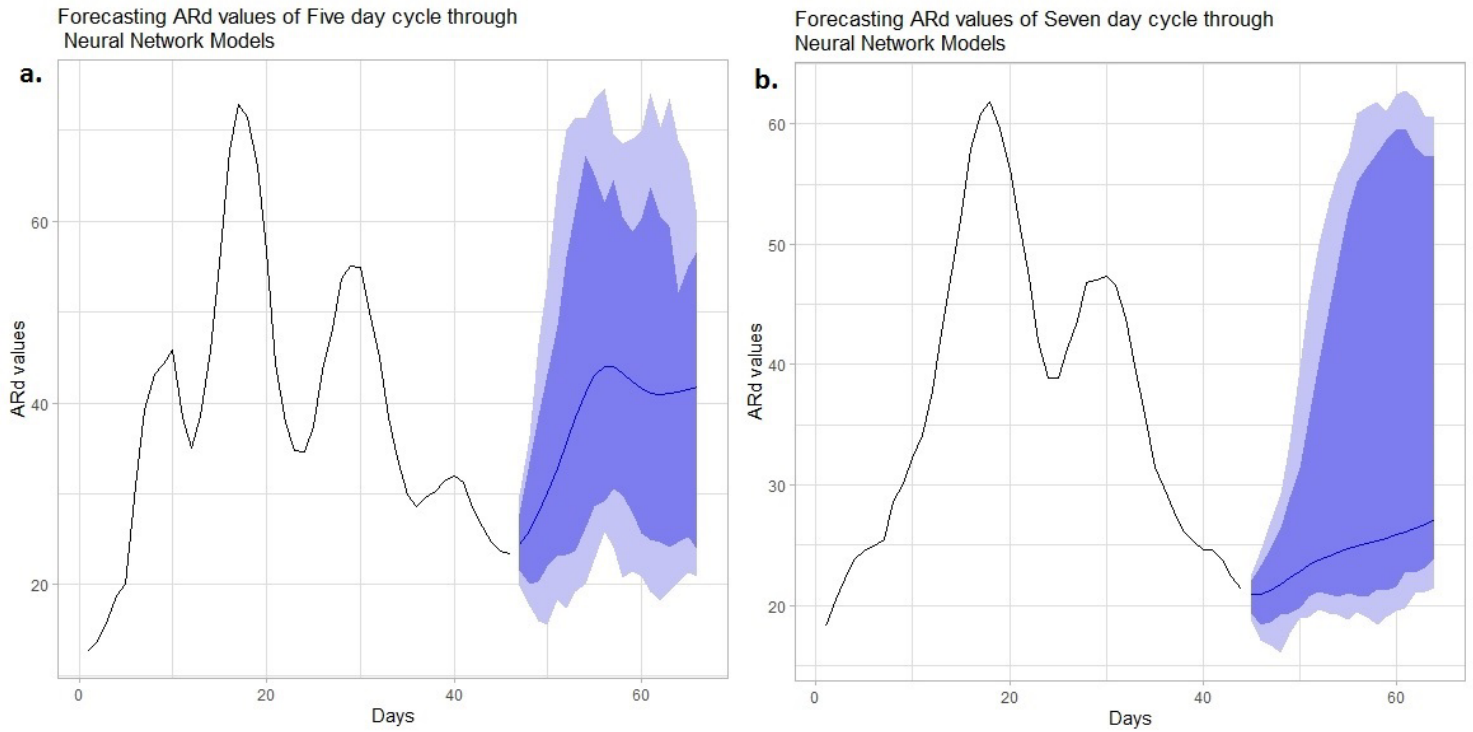


Figure 7. Forecasting AR_{cn} for five day cycle (5D) 20 March to 9 May and seven day cycle (7D) from 18 March to 7 May through Neural Network Models.