

Impact of ethnicity on outcome of severe COVID-19 infection. Data from an ethnically diverse UK tertiary centre

James TH Teo^{1,2,*}, Daniel M Bean^{3,4*}, Rebecca Bendayan^{3,5}, Richard JB Dobson^{3,4,5#}, Ajay M Shah^{1,6#},

1. *King's College Hospital NHS Foundation Trust, London, U.K.*
2. *Department of Clinical Neuroscience, Institute of Psychiatry, Psychology and Neuroscience, King's College London, London, U.K.*
3. *Department of Biostatistics and Health Informatics, Institute of Psychiatry, Psychology and Neuroscience, King's College London, London, U.K.*
4. *Health Data Research UK London, Institute of Health Informatics, University College London, London, U.K.*
5. *NIHR Biomedical Research Centre at South London and Maudsley NHS Foundation Trust and King's College London, London, U.K.*
6. *School of Cardiovascular Medicine & Sciences, King's College London British Heart Foundation Centre of Excellence, London, U.K.*

* Joint First Authors

Joint corresponding authors:

Ajay M Shah (ajay.shah@kcl.ac.uk)

Richard JB Dobson (richard.j.dobson@kcl.ac.uk)

Abstract

During the current COVID-19 pandemic, it has been suggested that BAME background patients may be disproportionately affected compared to White but few detailed data are available. We took advantage of near real-time hospital data access and analysis pipelines to look at the impact of ethnicity in 1200 consecutive patients admitted between 1st March 2020 and 12th May 2020 to King's College Hospital NHS Trust in London (UK).

Our key findings are firstly that BAME patients are significantly younger and have different co-morbidity profiles than White individuals. Secondly, there is no significant independent effect of ethnicity on severe outcomes (death or ITU admission) within 14-days of symptom onset, after adjustment for age, sex and comorbidities.

Introduction

As the Covid-19 pandemic extends from ethnically homogeneous countries in East Asia to multicultural populations in Europe and North America, anecdotal reports suggest a higher disease burden in Black, Asian and Minority Ethnic (BAME) groups¹. Early UK audit data on COVID-19 indicate a higher proportion of BAME patients on critical care units than previous years but do not establish whether disease outcome is worse than in White patients or the factors underlying any disparity².

Methods

This project operated under London South East Research Ethics Committee approval (reference 18/LO/2048) granted to the King's Electronic Records Research Interface (KERRI). Specific work on COVID19 research was reviewed with expert patient input on a virtual committee with Caldicott Guardian oversight.

We evaluated the effect of ethnicity on disease outcomes in a consecutive cohort of 1200 patients admitted with COVID-19 disease to King's College Hospital NHS Foundation Trust from 1st March 2020 to 12th May 2020. This multi-site tertiary centre in South East London serves an ethnically diverse population: approximately 30% of residents identify as BAME in the immediate vicinity of the largest site (boroughs of Southwark and Lambeth) and ~12% near the Bromley site³.

We used an informatics pipeline previously described for evaluating ACE-inhibitor risk in patients with COVID-19 disease⁴. The primary endpoint was death (WHO-COVID-19 Outcomes Scale 8) or admission to critical care (WHO-COVID-19 Outcomes Scale 6-7) by

14 days after symptom onset. Self-assigned ethnicity is reported according to UK census categories.

Results

The distribution of self-identified ethnicity among patients is shown in Table 1. 30.7% of patients were BAME. BAME patients (84% Black) had a significantly higher prevalence of diabetes and hypertension but were significantly younger than White patients (Table 2, Figure 1). The prevalence of ischaemic heart disease (IHD) and heart failure tended to be lower in BAME compared to White patients. The incidence of the primary end-point by 21 days after symptom onset and Kaplan-Meier curves were similar between White and BAME patients (Figure 2).

We tested whether BAME ethnicity was independently associated with the incidence of the primary outcome but did not find a significant statistical association in a series of multivariate logistic regression models adjusted for age, sex and comorbidities (hypertension, diabetes, ischaemic heart disease/ heart failure) - Table 3. Increasing age and male sex were associated with an increased likelihood of the primary outcome.

This study in a series of 1200 patients hospitalised with COVID-19 disease in London (United Kingdom) indicates large ethnicity-related differences in age and comorbidities. Patients of BAME origin who require admission for COVID-19 are significantly younger than White patients from the same geographical area and have a significant higher burden of diabetes and hypertension. We did not identify an independent impact of ethnicity on the severity of in-hospital outcome after admission. Our BAME patients were predominantly Black and the results may not apply to other ethnicities. Further studies are required to establish the reasons underlying the ethnicity-related differences in number and profile of patients who require hospitalisation for COVID-19 disease.

References:

1. Croxford R. Ethnic minorities 'a third' of Covid-19 patients. BBC. 2020; published online April 12. <https://www.bbc.com/news/uk-52255863> (accessed April 17, 2020).
2. Intensive Care National Audit & Research Centre (ICNARC). Report on 3883 patients critically ill with COVID-19; published online April 4 2020. <https://www.icnarc.org/DataServices/Attachments/Download/c31dd38d-d77b-ea11-9124-00505601089b> (accessed April 17, 2020)

3. Public Health England (PHE). Public Health Profiles.
<https://fingertips.phe.org.uk/search/ethnicity#page/0/gid/1/pat/6/par/E12000007/ati/101/are/E09000022/cid/4/page-options/ovw-tdo-0> (accessed April 17, 2020).
4. Bean D, Kraljevic Z, Searle T, *et al.* Treatment with ACE-inhibitors is associated with less severe disease with SARS-Covid-19 infection in a multi-site UK acute Hospital Trust. *medRxiv* 2020; : 2020.04.07.20056788.
5. Firth D. Bias reduction of maximum likelihood estimates. *Biometrika* 1993; **80**: 27–38.

Acknowledgements:

DMB is funded by a UKRI Innovation Fellowship as part of Health Data Research UK MR/S00310X/1 (<https://www.hdruk.ac.uk>). RB is funded in part by grant MR/R016372/1 for the King's College London MRC Skills Development Fellowship programme funded by the UK Medical Research Council (MRC, <https://mrc.ukri.org>) and by grant IS-BRC-1215-20018 for the National Institute for Health Research (NIHR, <https://www.nihr.ac.uk>) Biomedical Research Centre at South London and Maudsley NHS Foundation Trust and King's College London. RJBD is supported by Health Data Research UK; The BigData@Heart Consortium, European Union's Horizon 2020 grant agreement No. 116074; The National Institute for Health Research (NIHR) University College London Hospitals Biomedical Research Centre and the NIHR Biomedical Research Centre at South London and Maudsley NHS Foundation Trust and King's College London. AMS is supported by the British Heart Foundation (CH/1999001/11735), the NIHR Biomedical Research Centre at Guy's & St Thomas' NHS Foundation Trust and King's College London (IS-BRC-1215-20006), and the Fondation Leducq. The views expressed are those of the author(s) and not necessarily those of the NHS, the NIHR or the Department of Health and Social Care.

We thank all the clinicians managing the patients, the patient experts of the KERRI committee, Professor Irene Higginson, Professor Alastair Baker and Professor Jules Wendon for their support.

Declaration of Interests:

JTHT received research support and funding from InnovateUK, Bristol-Myers-Squibb, iRhythm Technologies, and holds shares <£5,000 in Glaxo Smithkline and Biogen.

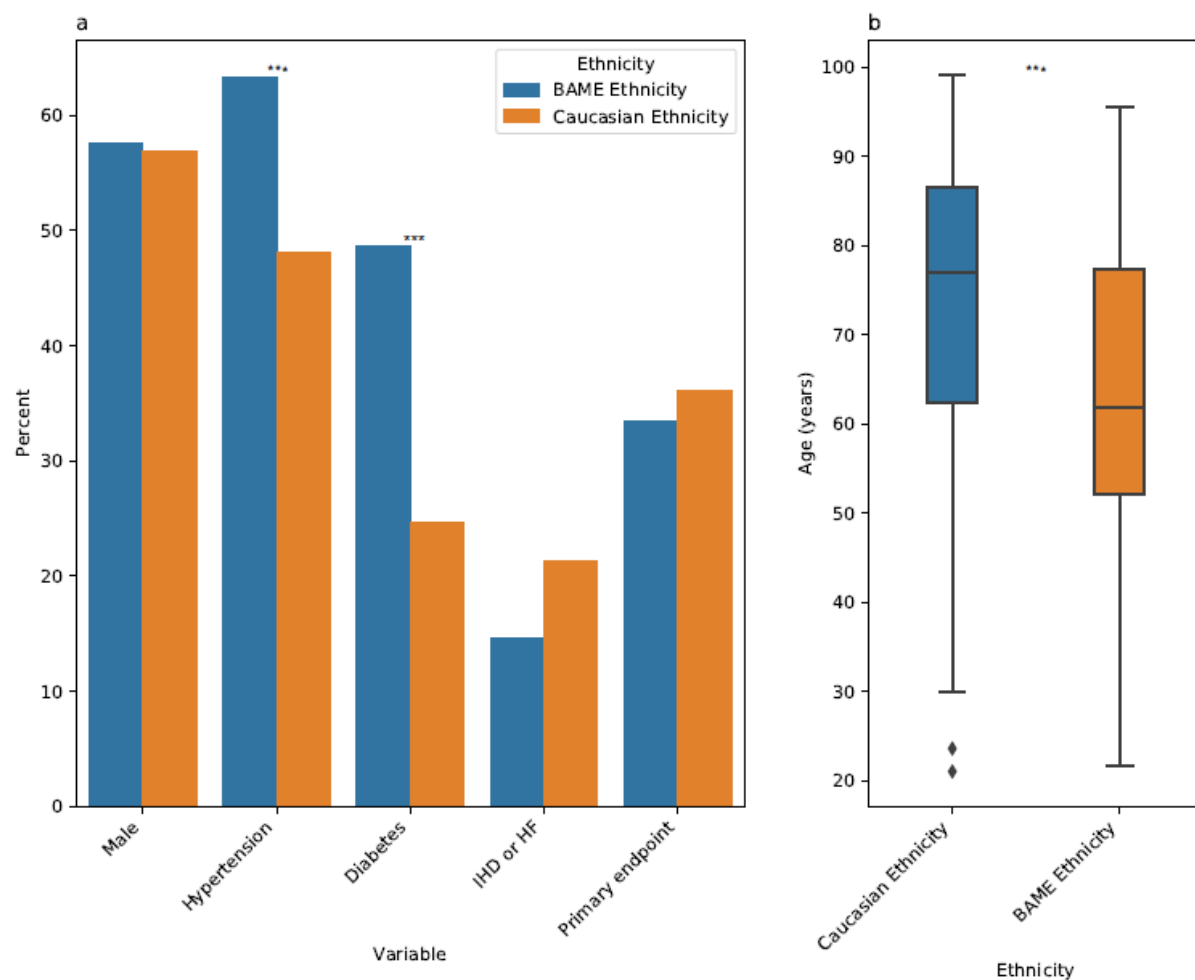
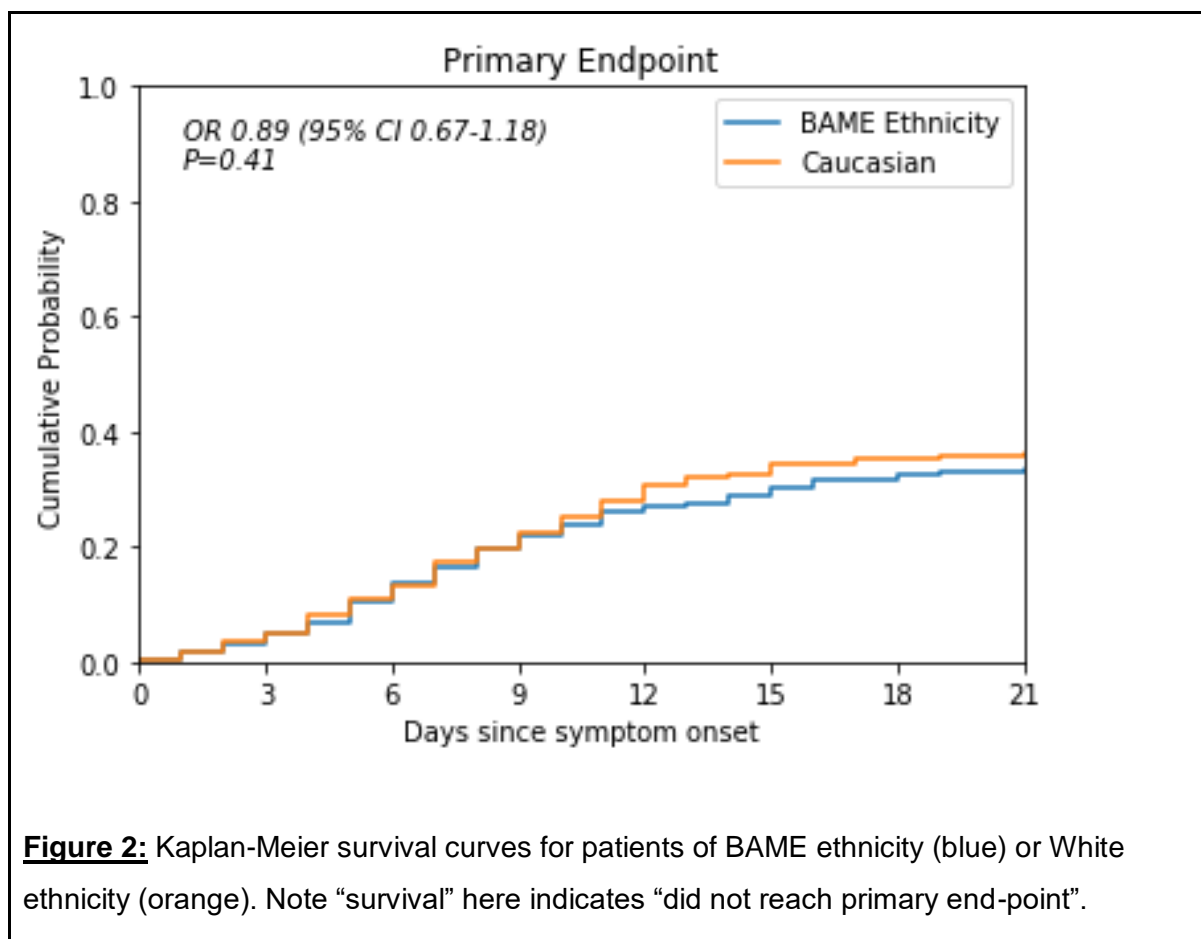


Figure 1. Key demographics by Ethnicity. a) Rate of male sex, hypertension, diabetes, ischaemic heart disease or heart failure and primary endpoint. b) Distribution of age in years. In both, blue = BAME ethnicity, orange = White ethnicity. BAME = Black, Asian and Minority Ethnic, IHD = ischaemic heart disease, HF = heart failure. Asterisks indicate significance; * = $p < 0.05$, ** = $p < 0.01$, *** = $p < 0.001$, all others not significant ($p \geq 0.05$).



	Overall	BAME Ethnicity	Black Ethnicity	White Ethnicity	Asian Ethnicity	Unknown/Mixed/Other Ethnicity
N (%)	1200	368 (30.7)	310 (25.8)	512 (42.7)	58 (4.8)	320 (26.7)
Age	68.0 (17.1)	62.9 (16.4)	63.0 (16.1)	73.7 (15.6)	62.3 (18.2)	64.7 (17.4)
Male	686 (57.2%)	212 (57.6%)	172 (55.5%)	291 (56.8%)	40 (69.0%)	183 (57.2%)
Hypertension	645 (53.8%)	233 (63.3%)	201 (64.8%)	246 (48.0%)	32 (55.2%)	166 (51.9%)
Diabetes mellitus	418 (34.8%)	179 (48.6%)	152 (49.0%)	126 (24.6%)	27 (46.6%)	113 (35.3%)
Ischaemic heart disease or heart failure	224 (18.7%)	54 (14.7%)	43 (13.9%)	109 (21.3%)	11 (19.0%)	61 (19.1%)
Primary Endpoint (Death or Critical Care)	415 (34.6%)	123 (33.4%)	94 (30.3%)	185 (36.1%)	29 (50.0%)	107 (33.4%)
Death	288 (24.0%)	68 (18.5%)	53 (17.1%)	151 (29.5%)	15 (25.9%)	69 (21.6%)
Critical Care	168 (14.0%)	65 (17.7%)	49 (15.8%)	51 (10.0%)	16 (27.6%)	52 (16.2%)

Table 1. Clinical characteristics of study cohort. The “Unknown/Mixed/Other Ethnicity” group contains any single ethnicity that is not White or BAME, any mixed ethnicity, and any missing / not stated ethnicity. BAME = Black, Asian and Minority Ethnic. All values are N (%) except age which is mean (s.d.). All percentages are relative to column total except for the total N row, which shows percent of cohort.

Variable	Test	p	p (corrected)
Age	t-test	<0.001	<0.001
Male	Chi2	0.87	1
Hypertension	Chi2	<0.001	<0.001
Diabetes	Chi2	<0.001	<0.001
Ischaemic heart disease or heart failure	Chi2	0.016	0.097
Endpoint Status	Chi2	0.45	1

Table 2. Statistical tests for differences in patient characteristics. All tests compare BAME ethnicity vs White ethnicity. Continuous variables are compared using a t-test, count variables are compared using a Chi-squared test. P (corrected) is the p-value after Bonferroni correction for multiple comparisons.

Variable	OR (95% CI)	P-value	Model
BAME Ethnicity	0.89 (0.67-1.18)	0.41	Model 1
BAME Ethnicity	1.09 (0.81-1.47)	0.58	Model 2
Age per 10 years	1.23 (1.12-1.34)	<0.001	
Male	1.49 (1.12-1.99)	<0.01	
BAME Ethnicity	1.11 (0.80-1.52)	0.53	Model 3
Age per 10 years	1.25 (1.14-1.38)	<0.001	
Male	1.50 (1.12-2.00)	<0.01	
Hypertension	0.91 (0.66-1.24)	0.54	
Diabetes	1.02 (0.74-1.40)	0.91	
Ischaemic heart disease or heart failure	0.76 (0.52-1.10)	0.15	

Table 3. Summary of odds ratios in statistical models. Model 1 is univariate, Models 2 and 3 are multivariate. Odds ratios and p-values calculated from logistic regressions applying Firth's correction⁵. BAME = Black, Asian and Minority Ethnic Groups.

