

**Title:**

**Health service inequalities during the COVID-19 pandemic among elderly people living in large urban and non-urban areas in Florida, US**

Xinhua Yu, M.D., Ph.D.

**Corresponding address:**

Xinhua Yu, M.D., Ph.D.

Associate Professor

Division of Epidemiology, Biostatistics and Environmental Health

School of Public Health

University of Memphis

Email: [xyu2@memphis.edu](mailto:xyu2@memphis.edu)

Phone: 901-678-3433

**Running title:**

Urban rural inequalities among elderly COVID-19 patients

**Keywords:**

COVID-19; geographic disparities; elderly; gender difference; urban rural inequalities; health disparities

## **Abstract**

**Objectives:** Health inequalities were often exacerbated during the emerging epidemic. This study examined urban and non-urban inequalities in health services among COVID-19 patients aged 65 or above in US Florida from March 2 to May 27, 2020.

**Methods:** A retrospective time series analysis was conducted using individual patient records. Multivariable Poisson and logistic models were used to calculate adjusted incidence of COVID-19 and the associated rates of emergency department (ED) visits, hospitalizations and deaths.

**Results:** As of May 27, 2020, there were 13,659 elderly COVID-19 patients (people aged 65 or above) in Florida and 14.9% of them died. Elderly people living in small metropolitan areas might be less likely to be confirmed with COVID-19 infection than those living in large metropolitan areas. The ED visit and hospitalization rates decreased significantly across metropolitan statuses for both men and women. Those patients living in small metropolitan or rural areas were less likely to be hospitalized than those living in large metropolitan areas (35% and 34% versus 41%). Elderly women aged 75 or above living in rural areas had 113% higher adjusted incidence of COVID-19 than those living in large metropolitan areas, and the rates of hospitalizations were lower compared with those counterparts living in large metropolitan areas (29% versus 46%; OR: 0.37 [0.25-0.54];  $p < 0.001$ ).

**Conclusions:** For elderly people living in US Florida, those who living in small metropolitan or rural areas were less likely to receive adequate health care than those who living in large or medium metropolitan areas during the COVID-19 pandemic.

## Introduction

Since December 2019, the novel Severe Acute Respiratory Syndrome associated coronavirus (SARS CoV2) (Zhu et al. 2020) has infected over 6 million people and claimed more than 370,000 lives worldwide (JHU 2020). Unlike the 2003 SARS virus that had limited transmissibility before symptom onset (Peiris et al. 2003), the novel SARS CoV2 can be transmitted from pre-symptomatic and asymptomatic patients (Bai et al. 2020; Huang et al. 2020b; Li et al. 2020) and cause sudden symptom exacerbation among mildly symptomatic patients, often leading to cytokine storm and acute respiratory distress syndrome (ARDS) (Guan et al. 2020; Huang et al. 2020a). The unprecedented scale of pandemic has forced many countries to adopt aggressive mitigating measures such as social distancing, closing schools and business, and prohibiting large gatherings (Anderson et al. 2020; Ferguson et al. 2020; Pan et al. 2020). Consequently, the epidemic in the US has slowed down significantly and many metropolitan areas have reached a turning point with reproduction numbers of one or below after April 15, 2020, as demonstrated in our previous study (Yu 2020).

People aged 65 or above were disproportionately affected by the pandemic, as about 80% of deaths occurred among this group (referred as elderly people in this report) (Garg et al. 2020). Due to their physiologically weak immunity and high prevalence of comorbidities in which two thirds of elderly people had two or more chronic conditions (Chavan et al. 2017), elderly people might be more likely to have severe disease if infected by the virus. In addition, timely diagnosis was critical during the COVID-19 pandemic, as early diagnosis and treatment might allow early interventions to reduce the risk of developing ARDS. However, timely diagnosis and treatment might be impeded by myriads of health care access barriers such as lack of transportation, difficulties in communicating with health care providers, and the complexity of the health care

system (Fitzpatrick et al. 2004; Hill et al. 2015). For example, in a Netherlands study, elderly breast cancer patients were more likely to diagnosed with high stage of cancer and less likely to receive surgical treatment (Bastiaannet et al. 2010). During the COVID-19 pandemic, many elderly patients living in New York, US had prolonged stays in the intensive care unit and one fourth of them eventually died (Richardson et al. 2020).

Unfortunately, as history has shown, health inequalities might be exacerbated during the emerging epidemic (Hill et al. 2015). Awakened by this, many states started reporting the numbers of cases, hospitalizations and deaths by age and racial/ethnicity groups, revealing a disproportionately heavier disease burden among vulnerable elderly populations and among African Americans and other minority groups (FL-DOH 2020a; Santich 2020). Health inequalities could be due to differences in socio-economic status (SES). People with lower SES were more likely to have two or more chronic conditions than those with higher SES, (Kail et al. 2020; Singer et al. 2019) and may have limited access to health care resources. Therefore, SES factors could play an important role in survival among elderly people during the COVID-19 pandemic.

One particular aspect of health service inequalities is related to the differences between urban and non-urban areas. Not only are health care resources less sufficient in non-urban areas than urban areas, but also socioeconomic status and age distributions are different between them (de Boer et al. 2019). Elderly living in non-urban areas were more likely to receive inadequate health care than elderly living in large urban areas (Martino et al. 2019), and elderly colorectal cancer patients living rural areas were on average 18 days longer to receive a diagnosis than elderly living in urban areas (Bergin et al. 2018). Meanwhile, despite wide availability of maps representing the epidemic process, little was known about how geographic differences affected

the health inequalities among elderly people living in large, medium, small metropolitan or rural areas. Existing reports and maps often focused on the description of the epidemic (e.g., websites driven by a GIS system like that of Johns Hopkins University (JHU 2020)), but none has carefully explored the inequalities underlying the reported case counts with appropriate epidemiological methods.

In this study, we aimed to examine urban and non-urban inequalities in health services during the COVID-19 pandemic among elderly patients in US Florida from March 2 to May 27, 2020.

Since urban areas have more health care resources than non-urban areas, and those living in non-urban areas are more likely to have lower SES, we hypothesized that those living in small metropolitan or rural areas might have lower rates of visiting an ED, being hospitalized and higher mortality rates than those living in large or medium metropolitan areas.

## **Methods**

### **Data sources**

All lab confirmed COVID-19 cases were listed online by the Florida Department of Health (FL-DOH 2020a) and pre-processed (Aden-Buie 2020). The line list file included patient's county, age, gender, residency, case confirmation date, contact history, ever visited an ED, being hospitalized and death status. However, no dates for ED visits, hospitalizations, or deaths were explicitly recorded in the file.

Metropolitan status for each county was obtained from National Center for Health Statistics (CDC 2020). Florida population data for 2018 were obtained from Florida health charts website (FL-DOH 2020b). We merged all these data sources by gender, age groups, and county.

### **Statistical analysis**

This is time series of COVID-19 cases in Florida. The first case was recorded on March 2, 2020. As of May 27, 2020, there were 53,285 confirmed COVID-19 cases. We excluded 23 patients who did not have age information, and additional 86 patients without county information, resulting in 53,176 COVID-19 cases of all age groups and 13,659 cases aged 65 or above (referred as elderly people in this report) included in the analysis.

Patient's age was grouped into <25, 25-44, 45-64, 65-74, and 75+. However, except for Table 1 and Figure 1 which presented an overview of COVID-19 epidemic in Florida, our main analyses were restricted to patients aged 65 or older, as the focus of this study was about health disparities among elderly people.

Metropolitan status of each county was classified as large metropolitan areas and their suburbs (1 million or more people), medium metropolitan areas (250,000 – 1 million), small metropolitan areas (50,000 – 250,000), and non-metro areas (counties with 50,000 or less people, broadly considered as rural areas in this report). The number of cases were listed in the appendix table by metropolitan status (Appendix Table 3).

We also divided the whole epidemic into five periods: before April 1, 2020 and every two weeks thereafter (Table 1). After April 1, 2020, many control measures were enforced, including stay-at-home rule issued by the Florida state government on April 3, 2020. All models were adjusted for periods.

In addition to descriptive statistics about the number of cases, COVID-19 associated ED visits, hospitalizations and deaths, we calculated adjusted incident rates (per 1,000 persons) for COVID-19 based on Poisson regressions. The independent variable in the Poisson regressions was case counts by age and gender groups with age and gender specific population in each

county as the proper denominator. Therefore, the predicted rates from the above Poisson regressions were the adjusted incidence by adjusting for age and pooling over all counties. In addition, using the line list file for individual COVID-19 cases, we employed logistic regressions to calculate probabilities (rates) of ED visits, hospitalizations, and deaths. The independent variable of the logistic regressions was the status (0/1) of ED visit, hospitalization or death for each COVID-19 patient, adjusting for age, gender, period and county. The adjusted rates were obtained from the predictive margins of the models. Furthermore, we predicted age specific epidemic curves from semi-parametric generalized additive models with smoothed time terms, assuming daily new cases follow a negative binomial distribution. We also mapped the adjusted hospitalization rates (per 100 cases) for each county based on a Poisson model.

SAS 9.4 (SAS Inc, Cary, NC), Stata 16.1 (Stata Inc, College Station, TX) and R *mgcv* package (Wood 2017) were used in the analysis. Although we set the large metropolitan area as the reference group for most of our comparisons, Bonferroni adjustment was also used to account for multiple comparisons, resulting a significance level of  $p < 0.01$  for all comparisons.

Data and codes are available online (<https://github.com/xinhuayu/urbanruralFL>)

## Results

Table 1 presented an overview of COVID-19 epidemic in Florida as of May 27, 2020. Of 53,176 confirmed cases, 27.5% of cases had visited ED, 18.9% were hospitalized, and 4.6% died.

Majority of cases were in metropolitan counties (Appendix Table 3). Although cases aged 65 or older accounted for only 25.6% of total cases, they accounted for 54.3% of hospitalizations and 83.4% of deaths. They were two to three times more likely to be hospitalized, and five to ten times more likely to die than people aged 45-64 (Table 1).

Among those 13,659 elderly patients, about 40% of them visited an ED and 40% of them were hospitalized. About 14.9% of them died (Table 1). Elderly men were slightly more likely to visit an ED, be hospitalized and die than elderly women. About 7.8% of elderly patients lived in small metropolitan or rural areas. They had lower unadjusted rates of ED visits and hospitalizations compared with those living in large or medium metropolitan areas. Those who were diagnosed before April 1 were more likely to visit an ED, be hospitalized, or die than those who were diagnosed after April 1, possibly because more mildly symptomatic patients were detected in late periods. The lower rates of ED visits, hospitalizations and deaths during the last period (after May 15) were more likely due to reporting delays.

Figure 1 presented the epidemic curves by age groups. The epidemic among people aged 25-44 seemed to lead the epidemic in the whole population, followed by those aged 45-64 and those aged 65-74. These groups had experienced two peaks: one major peak around April 5-10, and a small one around May 15-20. However, the daily new cases among people aged 75 or above remained stable from around April 1 to around May 15. Similar patterns existed in the epidemic curves by metropolitan statuses among elderly people (Appendix Figure 1).

The adjusted incident rates of COVID-19 and adjusted rates of ED visits, hospitalizations and deaths among COVID-19 patients were presented in Figure 2a-d (details in Appendix Table 1 and Table 2). Overall, the differences in adjusted incident rates between elderly men and women were small, while elderly men were more likely to have an ED visit ( $p < 0.01$  for men vs. women aged 75 or above), be hospitalized or die with COVID-19 than elderly women of the same age group and living in the same areas, though many comparisons were not statistically significant after Bonferroni adjustment.



Furthermore, those living in small metropolitan areas had lower incident rates than those living in large or medium metropolitan areas (Figure 2a, and Appendix Table 1). For example, for men aged 65-74 living in small metropolitan areas, the adjusted incidence was about 43% lower than that of large metropolitan areas (1.56 vs. 2.82 per 1,000 persons; Rate Ratio (RR): 0.57; 95% confidence interval (95%CI): [0.33-0.98];  $p=0.04$ ). Similar reduction was observed among women aged 65-74 (1.18 vs. 2.18 per 1,000 persons comparing small metropolitan with large metropolitan areas; RR: 0.53 [0.32-0.89];  $p=0.02$ ). However, elderly people living in rural areas tended to have higher incidence of COVID-19 than those living in large metropolitan areas. Particularly, women aged 75 or above living in rural areas had more than double of incidence than those living in large metropolitan areas (6.68 vs. 3.10 per 1,000 persons; RR: 2.23 [1.21-4.12];  $p=0.01$ ).

Figure 2b-d presented adjusted rates of ED visits, hospitalizations, and deaths by metropolitan statuses for each age and gender group. There were significant decreasing trends of ED visits across metropolitan statuses (all  $p$  for trend  $<0.01$ , Figure 2b, Appendix Table 2). For example, male patients aged 65-74 living in rural areas had 53% lower rate of ED visits than those living in large metropolitan areas (22% vs. 41%, OR: 0.47 [0.29-0.75];  $p=0.002$ ). Female patients aged 75 or above living in rural areas had 79% lower rate of ED visits than those living in large metropolitan areas (13% vs. 43%, OR: 0.21 [0.13-0.34],  $p<0.001$ ). Similarly, those living in small metropolitan also had lower rates of ED visits than those living in large metropolitan areas.

Overall, there were decreasing trends of hospitalization rates across metropolitan statuses, but most evident among female patients aged 75 or above (Figure 2c, Appendix Table 2). Female patients aged 75 or above living in small metropolitan or rural areas had 53% and 63% lower rates of hospitalizations than those living in large metropolitan areas (29% vs. 46% for both

comparisons, OR: 0.47 [0.34-0.66] and 0.37 [0.25-0.54] for small metropolitan and rural areas, respectively; both  $p < 0.001$ ).

Due to small number of deaths in small metropolitan and rural areas, we combined them in the analysis (Figure 2d, Appendix Table 2). There was no difference in death rates across metropolitan statuses.

The adjusted hospitalization rates were mapped by counties (Figure 3). In addition to Miami-Dade County (right southeast corner), there were pockets of small metropolitan or non-metro counties in the north or middle of Florida that had 40-60% or 60+% hospitalization rates (darker color).

## **Discussion**

This was the first study that documented significant health inequalities between large urban areas and small metropolitan or rural areas during the COVID-19 pandemic. In US Florida, elderly people living in small metropolitan areas had lower incidence of COVID-19, while those living in rural areas had higher incidence than those living in large or medium metropolitan areas. However, there were decreasing trends of ED visits and hospitalizations across metropolitan statuses. Particularly, the rates of ED visits and hospitalizations were significantly lower among female patients aged 75 or above living in small metropolitan or rural areas. On the other hand, the differences in COVID-19 related deaths were less evident between urban and non-urban areas. Many other factors could affect the risk of deaths due to COVID-19 and regional characteristics might play a less important role in mortality.

The reasons for lower incident COVID-19 rates in small metropolitan areas but higher incident rates in rural areas were complicated. The dispersed residence in small metropolitan and rural

areas may deter the virus transmission, leading to relatively lower incident rates of COVID-19. On the other hand, there might not be enough detection kits available in these areas, resulting in artificially lower incident rates compared with large metropolitan areas. In addition, people living in rural areas might be more likely to rely on community centers and churches for social events. Regular gathering in community centers or churches might cause outbreaks of COVID-19, leading to abrupt increases of cases.

Furthermore, our findings confirmed deficiencies in providing health care to elderly people living outside of large or medium metropolitan areas (Casper et al. 2016; Singh et al. 2019). Health care facilities in the US were mostly concentrated in large cities. Elderly people living in small metropolitan or rural areas were known for lacking adequate health care (Odoi et al. 2019). In the time of emerging pandemic such as COVID-19, these problems may be aggravated when health care resources were under pressure. Many small metropolitan or rural hospitals were not equipped to manage infectious patients. Patients with mild symptoms might be triaged to self-care at home, without being diagnosed and lab confirmed. For elderly people, this was not ideal, as the respiratory symptoms might exacerbate suddenly (Huang et al. 2020a). Many of these severe cases were likely transferred to hospitals in larger cities, often enduring all kinds of troubles during the process.

Although the differences in the incident rates of COVID-19 between elderly men and women were small, there were gender differences in the rates of ED visits, hospitalizations and deaths among patients aged 75 or above living in small metropolitan or rural areas. This required careful explanations. It was unclear whether this was due to differences in disease severity, symptom tolerance, health care seeking behavior, or availability and accessibility to health care. Women

were known to have lower tolerance of pain (Ruau et al. 2012), but this might not be applicable to infectious diseases.

Although our knowledge of COVID-19 was growing rapidly, the treatment outcomes were still unsatisfactory. Treating acute respiratory distress syndrome (ARDS) was still a major challenge, often leading to a mortality rate of 50% among those with ARDS (Huang et al. 2020a; Richardson et al. 2020). Many elderly patients, especially those with underlying conditions such as cardiovascular diseases and diabetes, often had more severe diseases than those who were young and healthy. Therefore, a coordinated public health system, together with timely virus detection, case isolation, symptom monitoring and active contact tracing, were more important to curb the epidemic. Small metropolitan and rural areas should not be overlooked in building this system.

This study had some limitations. First of all, not all patient's information was publicly released due to privacy concerns. There were no explicit and accurate dates of symptom onset, clinic or ED visits, hospitalizations, and deaths for each patient. Therefore, we were only able to use logistic regressions to model the cumulative incidence of the ED visits, hospitalizations and deaths among those diagnosed with COVID-19. In addition, there was no information such as race and ethnicity, income and education levels in the file, hindering our ability to fully explore the roots of disparities (Hill et al. 2015) and precluding us from examine causalities of these health service inequalities. However, this problem was not unique to Florida. Many other states released aggregated data only. To some extent, we had more than enough data that were useful to paint a broad picture, but no good data to help us understand the drives of epidemic process and examine health disparities behind the case counts.

Second, this study was based on the existing data on the confirmed and reported cases, thus lacked people who were infected with virus but not reported (possibly asymptomatic or mild symptomatic). This may bias our results. Although elderly patients might be more likely to have symptoms if infected by the virus, we would nevertheless miss many asymptomatic or mildly symptomatic patients who would not seek care or not be detected. We did not know whether the proportion of asymptomatic patients differed between large metropolitan areas and small metropolitan or no-metro areas. In addition, the detection kits were not readily available to health providers, especially at the early stage of epidemic and in small metropolitan and rural areas. Therefore, patients living in small metropolitan or rural areas might be more likely to employ self-care or be triaged without diagnosis. We might underestimate the case incidences and overestimate the rates of ED visits and hospitalizations among those living in small metropolitan or rural areas. The true health inequalities might be worse than our observed differences.

Third, this study only used Florida data because of the availability of individual cases. Although Florida has a larger percent of elderly population than many other US states, we should still be cautious to generalize our findings to other regions. In addition to the differences in population structure, other differences due to socio-economic status, physical environment (e.g., temperature, humidity, and altitude), and the scale of interventions and societal compliance to the interventions, may all influence health inequalities during the epidemic process.

Finally, the COVID-19 pandemic was still evolving. Although our previous research indicated that the epidemic had reached plateau since later April in the 30 US largest metropolitan areas (Yu 2020), there would still be a lot of new cases to come every day, as the instantaneous reproduction numbers remained around 1 in many US metropolitan areas right till May 27, 2020. The patterns of hospitalizations and deaths by different age, gender and regions would likely be

more evident at the end of epidemic. Furthermore, given that much was still unknown regarding the treatments and consequences of COVID-19, elderly people might be impacted more profoundly by the epidemic and health inequalities due to possible long last disease consequences.

There were some unique strengths in our study. To our knowledge, this was the first study using individual patient information to examine urban and nonurban inequalities in the current COVID-19 epidemic. Health inequality issue was often neglected in the time of emerging epidemic, which were the reasons for recent urgent calls to tabulate cases and deaths by age, gender and ethnicities. Our research pointed to another dimension that should also be incorporated in epidemic reports. Furthermore, unlike common descriptive reports that focused on the numbers of new cases, hospitalizations and deaths, we employed analytical methods to uncover hidden health inequalities that were not evident in the aggregated tables. For example, comparing crude rates in Table 1 and adjusted rates in Appendix Table 2, only after careful adjustments did health inequalities emerge. Therefore, our study called for more good data, more transparent reporting, and more appropriate analyses.

In summary, profound health inequalities between urban and non-urban areas existed in the time of emerging pandemic like COVID-19. In US Florida, elderly people living in small metropolitan areas had lower incident rates, while elderly people living in rural areas had higher incident rates of COVID-19 than those living in large metropolitan areas. However, elderly patients living in small metropolitan or rural areas were less likely to have ED visits and hospitalizations than those living in large metropolitan areas, especially among female patients aged 75 or above living in these areas. Therefore, more supports and more resources should be

granted to health care providers who serve the vulnerable populations in small metropolitan and rural areas.

### **Ethics statement and declaration of conflict of interest**

This study was deemed exempt from ethical review, as it used publicly available data and no human subjects were directly involved in the study. No informed consent was necessary. The authors declared no conflict of interest with respect to the research, authorship, and/or publication of this article.

### **Funding**

This research was funded by a data science grant from the FedEx Institute of Technology at the University of Memphis. The authors received no external financial support for the research, authorship, and/or publication of this article.

### **Acknowledgement**

This study has benefited from many insightful comments from editors and several anonymous reviewers during the process of publication, leading to significant improvements in the final report.

## References

- Aden-Buie G (2020) Florida COVID-19 data. <https://github.com/gadenbuie/covid19-florida/>. Accessed May 28, 2020
- Anderson RM, Heesterbeek H, Klinkenberg D et al. (2020) How will country-based mitigation measures influence the course of the COVID-19 epidemic? *Lancet* 395:931-934 doi:10.1016/S0140-6736(20)30567-5
- Bai Y, Yao L, Wei T et al. (2020) Presumed Asymptomatic Carrier Transmission of COVID-19 *JAMA* doi:10.1001/jama.2020.2565
- Bastiaannet E, Liefers GJ, de Craen AJ et al. (2010) Breast cancer in elderly compared to younger patients in the Netherlands: stage at diagnosis, treatment and survival in 127,805 unselected patients *Breast Cancer Res Treat* 124:801-807 doi:10.1007/s10549-010-0898-8
- Bergin RJ, Emery J, Bollard RC et al. (2018) Rural-Urban Disparities in Time to Diagnosis and Treatment for Colorectal and Breast Cancer *Cancer Epidemiol Biomarkers Prev* 27:1036-1046 doi:10.1158/1055-9965.EPI-18-0210
- Casper M, Kramer MR, Quick H et al. (2016) Changes in the Geographic Patterns of Heart Disease Mortality in the United States: 1973 to 2010 *Circulation* 133:1171-1180 doi:10.1161/CIRCULATIONAHA.115.018663
- CDC (2020) NCHS Urban-Rural Classification Scheme for Counties. CDC. [https://www.cdc.gov/nchs/data\\_access/urban\\_rural.htm](https://www.cdc.gov/nchs/data_access/urban_rural.htm). Accessed May 28, 2020
- Chavan PP, Kedia SK, Yu X (2017) Physical and Functional Limitations in US Older Cancer Survivors *Journal of Palliative Care & Medicine* 07 doi:10.4172/2165-7386.1000312
- de Boer WIJ, Buskens E, Koning RH et al. (2019) Neighborhood Socioeconomic Status and Health Care Costs: A Population-Wide Study in the Netherlands *Am J Public Health* 109:927-933 doi:10.2105/AJPH.2019.305035
- Ferguson N, Laydon D, Nedjati Gilani G et al. (2020) Report 9: Impact of non-pharmaceutical interventions (NPIs) to reduce COVID-19 mortality and healthcare demand Imperial College, UK. doi:10.25561/77482
- Fitzpatrick AL, Powe NR, Cooper LS et al. (2004) Barriers to health care access among the elderly and who perceives them *Am J Public Health* 94:1788-1794 doi:10.2105/ajph.94.10.1788
- FL-DOH (2020a) COVID-19 Current Situation in Florida. <https://floridahealthcovid19.gov/>. Accessed May 28, 2020
- FL-DOH (2020b) Florida Health Charts. Florida Department of Health. <http://www.flhealthcharts.com/charts/default.aspx>. Accessed May 28, 2020
- Garg S, Kim L, Whitaker M et al. (2020) Hospitalization Rates and Characteristics of Patients Hospitalized with Laboratory-Confirmed Coronavirus Disease 2019 - COVID-NET, 14 States, March 1-30, 2020 *MMWR Morb Mortal Wkly Rep* 69:458-464 doi:10.15585/mmwr.mm6915e3
- Guan WJ, Ni ZY, Hu Y et al. (2020) Clinical Characteristics of Coronavirus Disease 2019 in China *N Engl J Med* 382:1708-1720 doi:10.1056/NEJMoa2002032
- Hill CV, Perez-Stable EJ, Anderson NA et al. (2015) The National Institute on Aging Health Disparities Research Framework *Ethn Dis* 25:245-254 doi:10.18865/ed.25.3.245
- Huang C, Wang Y, Li X et al. (2020a) Clinical features of patients infected with 2019 novel coronavirus in Wuhan, China *Lancet* 395:497-506 doi:10.1016/S0140-6736(20)30183-5
- Huang L, Zhang X, Zhang X et al. (2020b) Rapid asymptomatic transmission of COVID-19 during the incubation period demonstrating strong infectivity in a cluster of youngsters aged 16-23 years outside Wuhan and characteristics of young patients with COVID-19: A prospective contact-tracing study *J Infect* 80:e1-e13 doi:10.1016/j.jinf.2020.03.006



- JHU (2020) COVID-19 Map. <https://coronavirus.jhu.edu/map.html>. Accessed May 28 2020
- Kail BL, Taylor MG, Rogers N (2020) Double Disadvantage in the Process of Disablement: Race as a Moderator in the Association Between Chronic Conditions and Functional Limitations *J Gerontol B Psychol Sci Soc Sci* 75:448-458 doi:10.1093/geronb/gby027
- Li G, Li W, He X et al. (2020) Asymptomatic and Presymptomatic Infectors: Hidden Sources of COVID-19 Disease *Clin Infect Dis* doi:10.1093/cid/ciaa418
- Martino S, Elliott M, Dembosky J et al. (2019) Rural-urban disparities in health care in Medicare. CMS Office of Minority Health, Baltimore, MD
- Odoi EW, Nagle N, Roberson S et al. (2019) Geographic disparities and temporal changes in risk of death from myocardial infarction in Florida, 2000-2014 *BMC Public Health* 19:505 doi:10.1186/s12889-019-6850-x
- Pan A, Liu L, Wang C et al. (2020) Association of Public Health Interventions With the Epidemiology of the COVID-19 Outbreak in Wuhan, China *JAMA* doi:10.1001/jama.2020.6130
- Peiris JS, Yuen KY, Osterhaus AD et al. (2003) The severe acute respiratory syndrome *N Engl J Med* 349:2431-2441 doi:10.1056/NEJMra032498
- Richardson S, Hirsch JS, Narasimhan M et al. (2020) Presenting Characteristics, Comorbidities, and Outcomes Among 5700 Patients Hospitalized With COVID-19 in the New York City Area *JAMA* doi:10.1001/jama.2020.6775
- Ruau D, Liu LY, Clark JD et al. (2012) Sex differences in reported pain across 11,000 patients captured in electronic medical records *J Pain* 13:228-234 doi:10.1016/j.jpain.2011.11.002
- Santich K (2020) COVID-19 and race, ethnicity. Orlando Sentinel. <https://www.orlandosentinel.com/coronavirus/os-ne-coronavirus-florida-deaths-by-race-ethnicity-20200410-dxshiqg4y5awrnezbtvbhj2ye-story.html>. Accessed May 28, 2020
- Singer L, Green M, Rowe F et al. (2019) Social determinants of multimorbidity and multiple functional limitations among the ageing population of England, 2002-2015 *SSM Popul Health* 8:100413 doi:10.1016/j.ssmph.2019.100413
- Singh GM, Becquart N, Cruz M et al. (2019) Spatiotemporal and Demographic Trends and Disparities in Cardiovascular Disease Among Older Adults in the United States Based on 181 Million Hospitalization Records *J Am Heart Assoc* 8:e012727 doi:10.1161/JAHA.119.012727
- Wood SN (2017) *Generalized Additive Models: An Introduction with R*. 2nd edn. Chapman and Hall/CRC,
- Yu X (2020) Impact of mitigating interventions and temperature on the instantaneous reproduction number in the COVID-19 epidemic among 30 US metropolitan areas *MEDRXIV/2020/081083*
- Zhu N, Zhang D, Wang W et al. (2020) A Novel Coronavirus from Patients with Pneumonia in China, 2019 *N Engl J Med* 382:727-733 doi:10.1056/NEJMoa2001017

Table 1: Descriptive characteristics of COVID-19 cases diagnosed in Florida as of May 27, 2020

	<b>Cases</b> No. (column %)	<b>Visited ED</b> No. (rate%)	<b>Hospitalized</b> No. (rate%)	<b>Deaths</b> No. (rate%)
<b>Total</b>	53,176 (100.0%)	14,632 (27.5%)	10,056 (18.9%)	2,446 (4.6%)
<b>Age</b>				
<25	5,273 (9.9%)	890 (16.9%)	230 (4.4%)	26 (0.5%)
25-44	16,369 (30.8%)	3,458 (21.1%)	1,321 (8.1%)	59 (0.4%)
45-64	17,875 (33.6%)	4,846 (27.1%)	3,043 (17.0%)	322 (1.8%)
65-74	6,299 (11.8%)	2,334 (37.1%)	2,109 (33.5%)	524 (8.3%)
75 +	7,360 (13.8%)	3,104 (42.2%)	3,353 (45.6%)	1,515 (20.6%)
<b>Among age 65 or older</b>				
<b>Total</b>	13,659 (100.0%)	5,438 (39.8%)	5,462 (40.0%)	2,039 (14.9%)
<b>Gender</b>				
Male	6,481 (47.4%)	2,809 (43.3%)	2,773 (42.8%)	1,105 (17.0%)
Female	7,178 (52.6%)	2,629 (36.6%)	2,689 (37.5%)	934 (13.0%)
<b>Metropolitan</b>				
Large	9,492 (69.5%)	3,982 (42.0%)	3,932 (41.4%)	1,400 (14.7%)
Medium	3,101 (22.7%)	1,154 (37.2%)	1,184 (38.2%)	472 (15.2%)
Small	615 (4.5%)	201 (32.7%)	216 (35.1%)	115 (18.7%)
Rural	451 (3.3%)	101 (22.4%)	130 (28.8%)	52 (11.5%)
<b>Period</b>				
Before 4/1/2020	1,739 (12.7%)	994 (57.2%)	853 (49.1%)	332 (19.1%)
4/1 - 4/14	3,705 (27.1%)	1,774 (47.9%)	1,674 (45.2%)	666 (18.0%)
4/15 - 4/30	3,511 (25.7%)	1,318 (37.5%)	1,424 (40.6%)	637 (18.1%)
5/1 - 5/14	2,578 (18.9%)	795 (30.8%)	902 (35.0%)	314 (12.2%)
5/15 - 5/27	2,126 (15.6%)	557 (26.2%)	609 (28.6%)	90 (4.2%)

Figure 1: Fitted COVID-19 epidemic curves by age groups in Florida, as of May 27, 2020

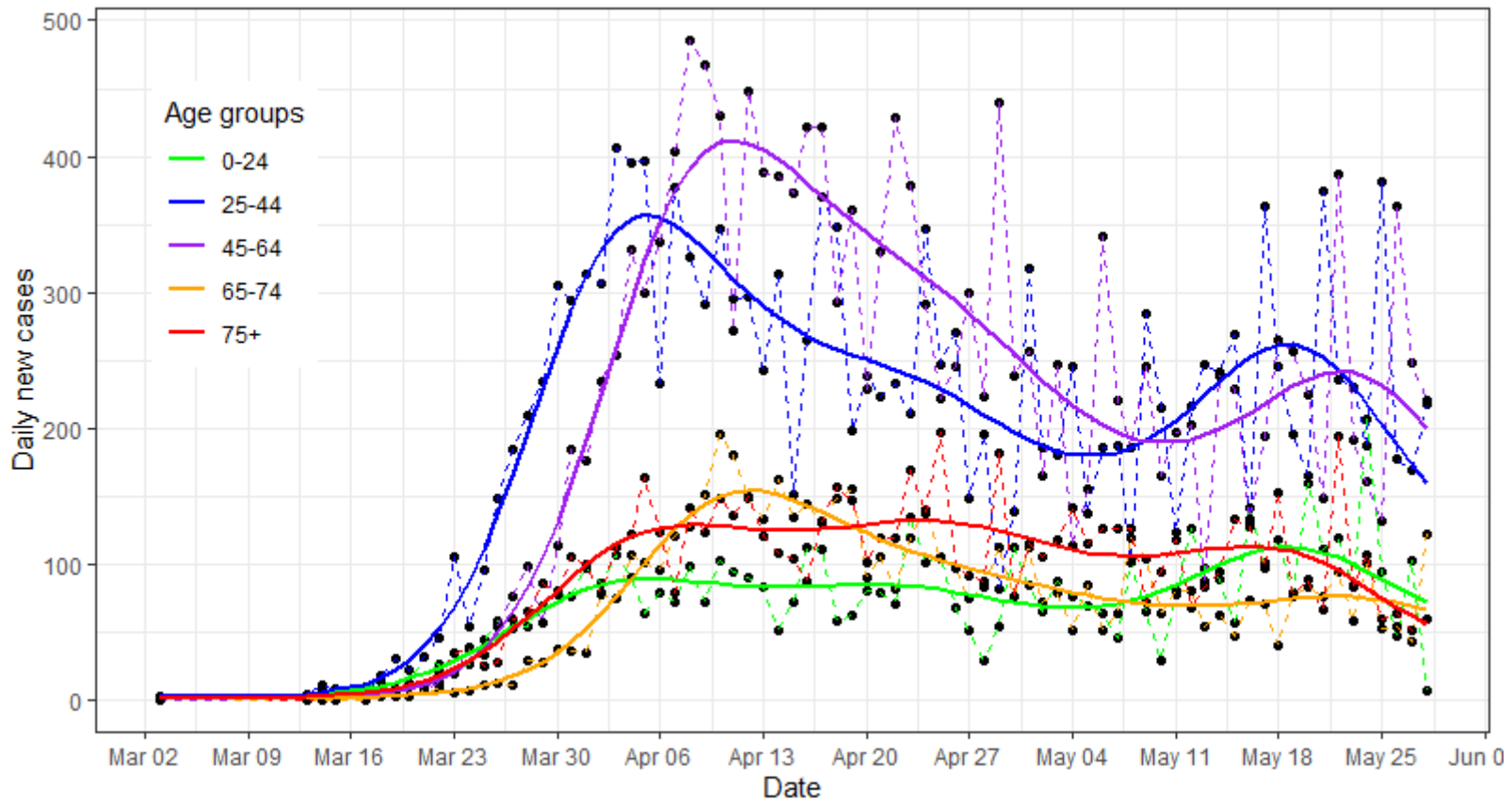
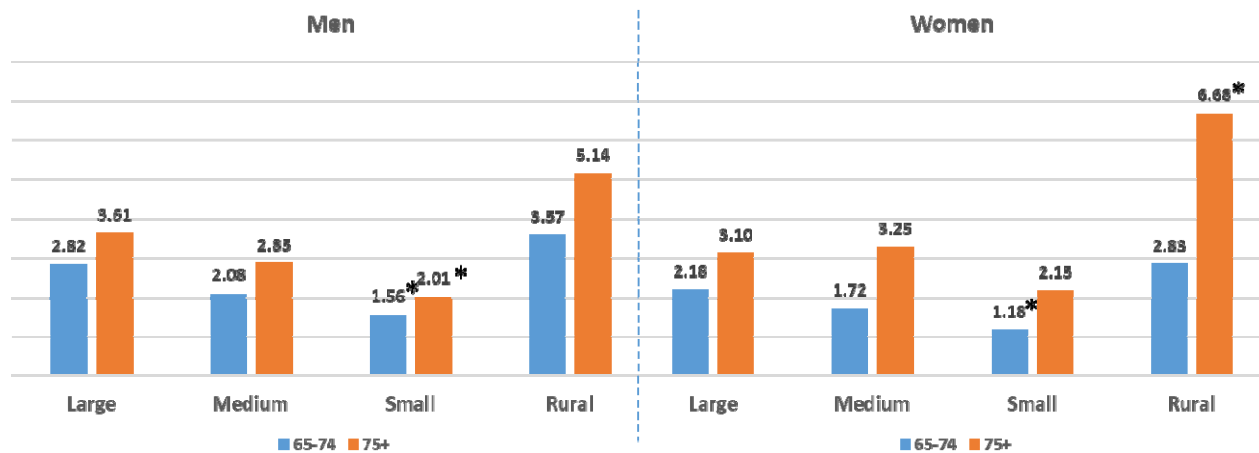
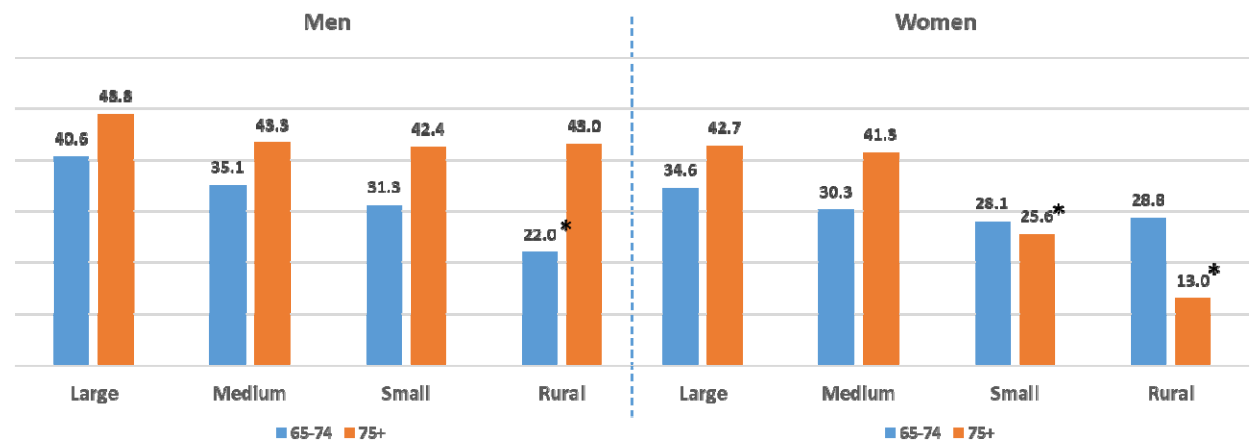


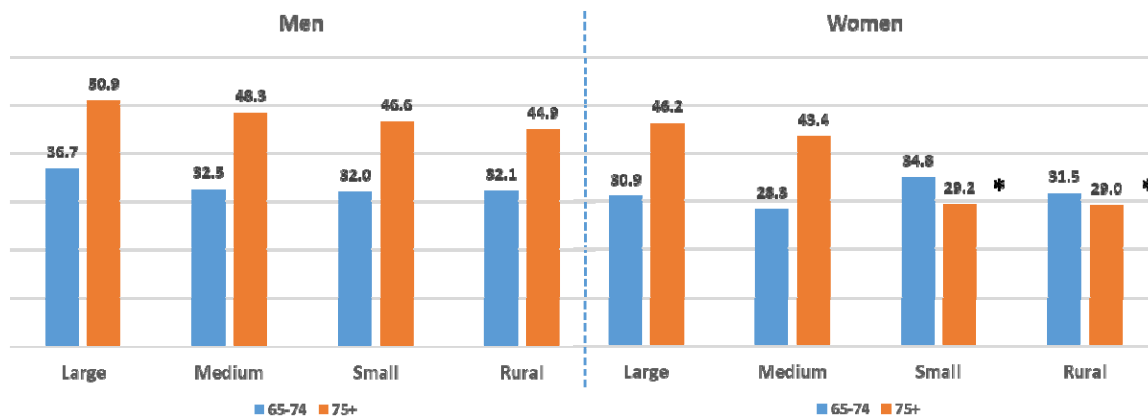
Figure 2: Adjusted incidence (per 1,000 persons) (a), and rates (per 100 cases) of emergency department visits (b), hospitalizations (c) and deaths (d) among elderly people with COVID-19, Florida as of May 27, 2020



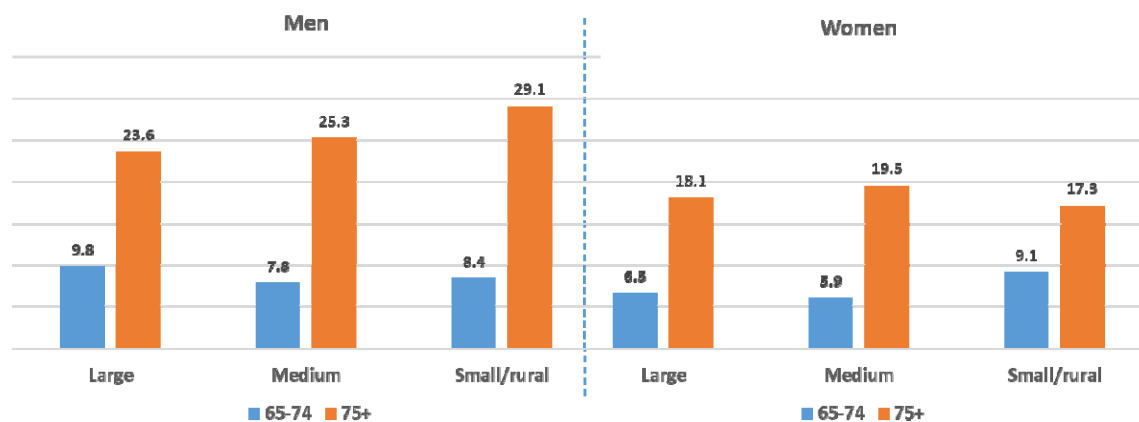
(a) Adjusted incidence (per 1,000)



(b) Adjusted rates of emergency department visits (per 100)



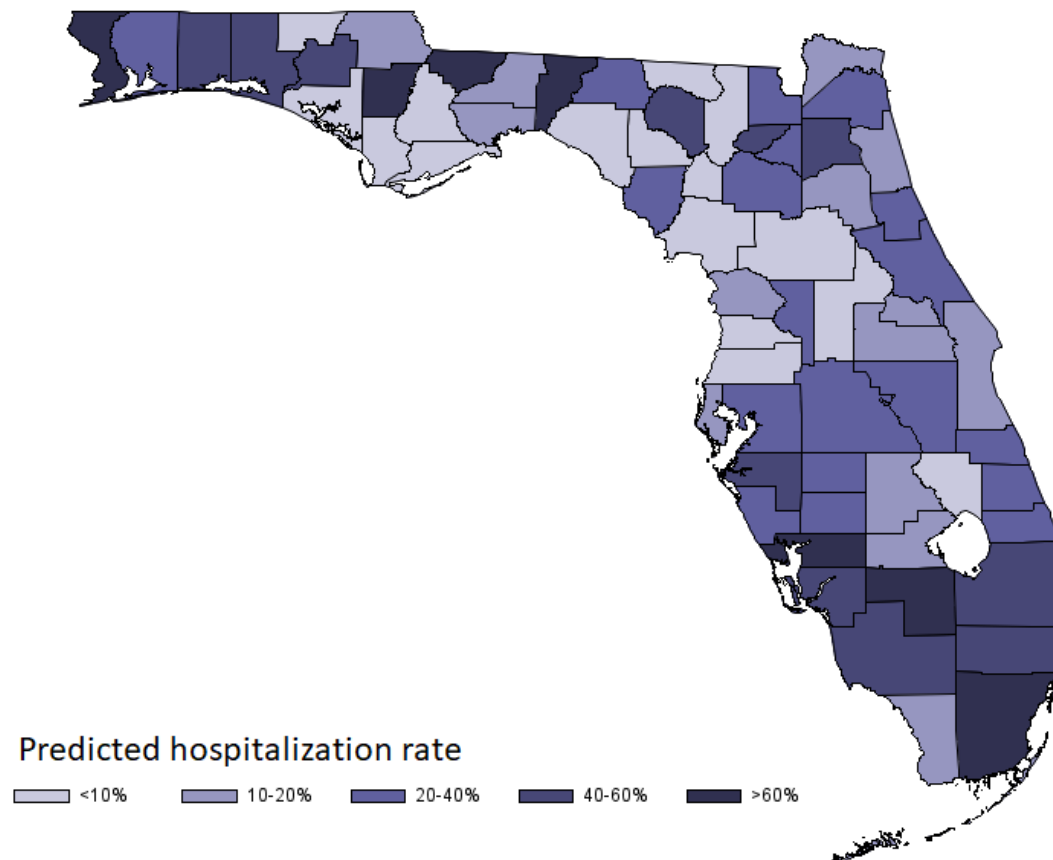
(c) Adjusted rates of hospitalizations (per 100)



(d) Adjusted rates of deaths (per 100)

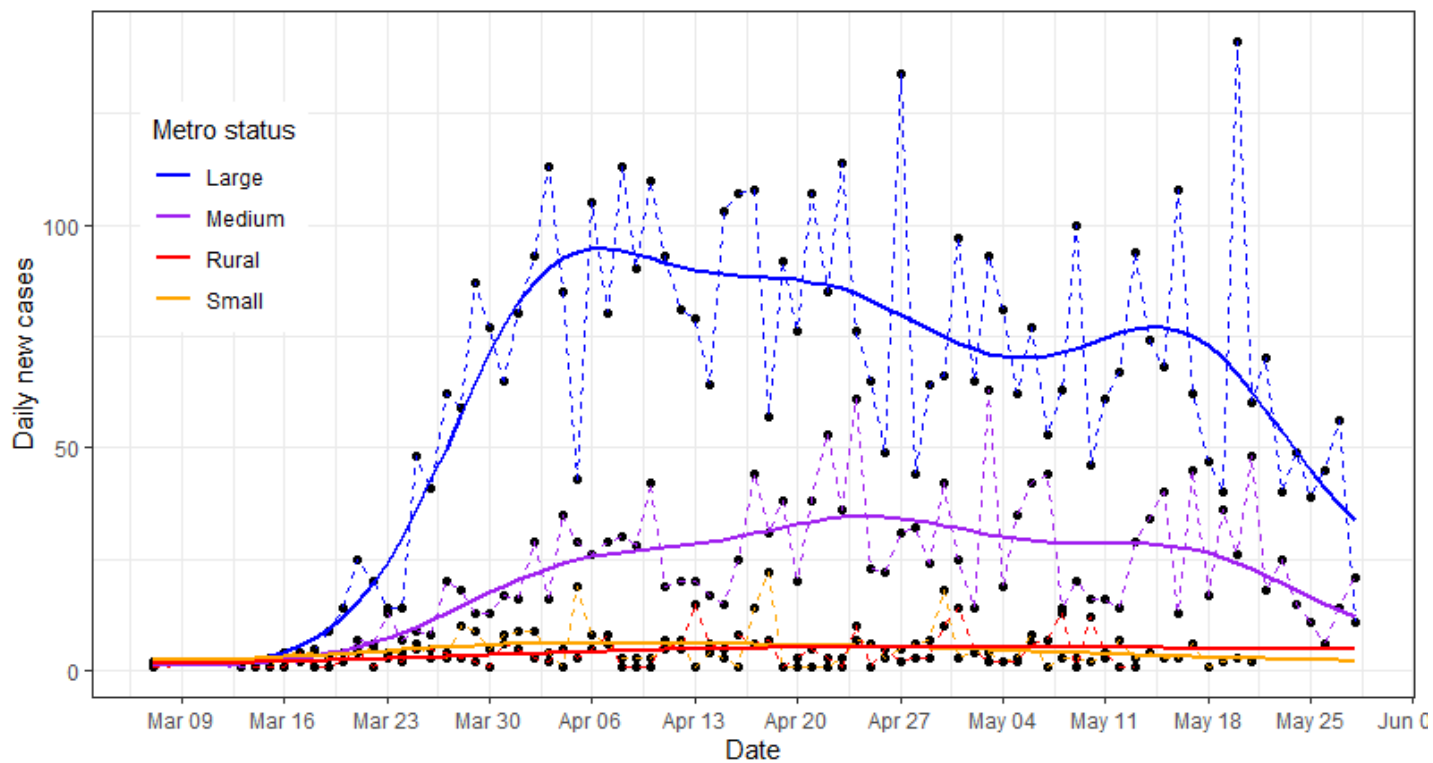
Note: \* indicates  $p < 0.01$  compared with the large metropolitan areas, after Bonferroni adjustment

Figure 3: Choropleth map of hospitalization rates among people aged 65 or older by counties, Florida, as of May 27, 2020



## Appendix:

Appendix Figure 1: COVID-19 epidemic curves by metropolitan status among elderly people, FL



Appendix

Table 1: COVID-19 confirmed cases, adjusted incidence (per 1,000) and 95% confidence interval (CI) among people aged 65 or older in Florida as of May 27, 2020

Gender & Age	Large metro		Medium metro		Small metro		Rural		p for trend
	cases	Incidence	cases	Incidence	cases	Incidence	cases	Incidence	
<b>Total</b>	9,492	2.93 (1.98 - 3.87)	3,101	2.48 (1.73 - 3.23)	615	1.73 (0.93 - 2.53)	451	4.57 (3.19 - 5.95)	0.10
<b>Male</b>	4,530	3.21 (2.17 - 4.25)	1,437	2.46 (1.71 - 3.22)	305	1.78* (0.94 - 2.62)	209	4.35 (2.97 - 5.74)	0.29
Age 65-74	2,316	2.82 (1.90 - 3.73)	692	2.08 (1.44 - 2.73)	151	1.56* (0.81 - 2.31)	108	3.57 (2.35 - 4.79)	0.50
Age 75 +	2,214	3.61 (2.44 - 4.78)	745	2.85 (1.97 - 3.73)	154	2.01* (1.04 - 2.98)	101	5.14 (3.35 - 6.94)	0.56
<b>Female</b>	4,962	2.64 (1.78 - 3.49)	1,664	2.48 (1.73 - 3.24)	310	1.67 (0.89 - 2.45)	242	4.75* (3.25 - 6.24)	0.13
Age 65-74	2,175	2.18 (1.47 - 2.88)	647	1.72 (1.18 - 2.25)	128	1.18* (0.61 - 1.76)	82	2.83 (1.80 - 3.85)	0.65
Age 75 +	2,787	3.10 (2.09 - 4.11)	1,017	3.25 (2.25 - 4.25)	182	2.15 (1.13 - 3.18)	160	6.68* (4.49 - 8.87)	0.02

Note: \* indicates  $p < 0.05$  compared with the large metropolitan areas



Table 2: Predicted probabilities (rates) and 95% confidence interval (CI) of emergency department (ED) visits, hospitalizations and deaths among patients aged 65 or older in Florida, as of April 25, 2020

<b>Gender</b>	<b>Age group</b>	<b>Large metro</b>	<b>Medium metro</b>	<b>Small metro</b>	<b>Rural</b>	<b>p for trend</b>
<b>ED visits</b>	Total	0.42 (0.41 - 0.43)	0.38 (0.36 - 0.39)	0.31* (0.27 - 0.34)	0.26* (0.21 - 0.30)	<0.001
	<b>Male</b>					
	Total	0.45 (0.43 - 0.46)	0.40* (0.37 - 0.42)	0.37 (0.31 - 0.42)	0.33* (0.26 - 0.40)	<0.001
	Age 65-74	0.41 (0.39 - 0.43)	0.35 (0.32 - 0.39)	0.31 (0.24 - 0.39)	0.22* (0.13 - 0.31)	<0.001
	Age 75 +	0.49 (0.47 - 0.51)	0.43 (0.40 - 0.47)	0.42 (0.35 - 0.50)	0.43 (0.32 - 0.54)	0.003
<b>Female</b>	Total	0.39 (0.38 - 0.40)	0.36 (0.34 - 0.39)	0.26* (0.21 - 0.31)	0.21* (0.15 - 0.27)	<0.001
	Age 65-74	0.35 (0.33 - 0.37)	0.30 (0.27 - 0.34)	0.28 (0.20 - 0.36)	0.29 (0.19 - 0.39)	0.003
	Age 75 +	0.43 (0.41 - 0.45)	0.41 (0.38 - 0.44)	0.26* (0.20 - 0.32)	0.13* (0.06 - 0.20)	<0.001
<b>Hospitalizations</b>	Total	0.41 (0.40 - 0.42)	0.38* (0.37 - 0.40)	0.35* (0.31 - 0.39)	0.34* (0.29 - 0.39)	<0.001
	<b>Male</b>					
	Total	0.44 (0.43 - 0.46)	0.41 (0.39 - 0.44)	0.40 (0.34 - 0.45)	0.39 (0.32 - 0.46)	0.002
	Age 65-74	0.37 (0.35 - 0.39)	0.33 (0.29 - 0.36)	0.32 (0.24 - 0.40)	0.32 (0.23 - 0.42)	0.02
	Age 75 +	0.51 (0.49 - 0.53)	0.48 (0.45 - 0.52)	0.47 (0.39 - 0.54)	0.42 (0.35 - 0.55)	0.04
<b>Female</b>	Total	0.39	0.36	0.31	0.30	<0.001

	Age 65-74	(0.38 - 0.40) 0.31 (0.29 - 0.33)	(0.34 - 0.39) 0.28 (0.25 - 0.32)	(0.26 - 0.36) 0.35 (0.26 - 0.44)	(0.24 - 0.36) 0.31 (0.21 - 0.42)	0.383
	Age 75 +	0.46 (0.44 - 0.48)	0.43 (0.40 - 0.47)	0.29* (0.23 - 0.36)	0.29* (0.21 - 0.37)	<0.001
<b>Deaths</b>	Total	0.15 (0.14 - 0.15)	0.15 (0.14 - 0.16)	0.16 (0.14 - 0.18)		0.57
<b>Male</b>	Total	0.17 (0.16 - 0.18)	0.17 (0.15 - 0.19)	0.19 (0.16 - 0.23)		0.38
	Age 65-74	0.10 (0.09 - 0.11)	0.08 (0.06 - 0.10)	0.08 (0.05 - 0.12)		0.13
	Age 75 +	0.24 (0.22 - 0.25)	0.25 (0.22 - 0.28)	0.29 (0.24 - 0.35)		0.06
<b>Female</b>	Total	0.13 (0.12 - 0.13)	0.13 (0.11 - 0.14)	0.17 (0.13 - 0.21)		0.51
	Age 65-74	0.07 (0.06 - 0.13)	0.06 (0.04 - 0.08)	0.09 (0.05 - 0.13)		0.81
	Age 75 +	0.18 (0.17 - 0.20)	0.19 (0.17 - 0.22)	0.17 (0.13 - 0.21)		0.61

Note: \* indicates  $p < 0.01$  compared with the large metropolitan areas, after Bonferroni adjustment

Table 3: Total number of people aged 65 or older infected with COVID-19 in Florida, as of May 27, 2020

<b>County</b>	<b>Metropolitan status</b>	<b>COVID-19 Cases</b>
Alachua	Medium metro	91
Baker	Large metro	14
Bay	Small metro	16
Bradford	Rural	26
Brevard	Medium metro	113
Broward	Large metro	1576
Calhoun	Rural	37
Charlotte	Small metro	228
Citrus	Small metro	46
Clay	Large metro	148
Collier	Medium metro	351
Columbia	Rural	12
Desoto	Rural	32
Dixie	Rural	10
Duval	Large metro	345
Escambia	Medium metro	270
Flagler	Medium metro	51
Franklin	Rural	.
Gadsden	Medium metro	47
Gilchrist	Medium metro	.
Glades	Rural	6
Gulf	Small metro	.
Hamilton	Rural	.
Hardee	Rural	11
Hendry	Rural	60
Hernando	Large metro	27
Highlands	Small metro	34
Hillsborou	Large metro	487
Holmes	Rural	.
Indian river	Small metro	57
Jackson	Rural	12

Jefferson	Medium metro	15
Lafayette	Rural	.
Lake	Large metro	87
Lee	Medium metro	607
Leon	Medium metro	38
Levy	Rural	4
Liberty	Rural	.
Madison	Rural	9
Manatee	Medium metro	371
Marion	Medium metro	51
Martin	Medium metro	95
Miami-Dade	Large metro	4103
Monroe	Rural	24
Nassau	Large metro	18
Okaloosa	Small metro	68
Okeechobee	Rural	6
Orange	Large metro	264
Osceola	Large metro	154
Palm Beach	Large metro	1570
Pasco	Large metro	89
Pinellas	Large metro	433
Polk	Medium metro	305
Putnam	Rural	31
St. Johns	Large metro	60
St. Lucie	Medium metro	126
Santa Rosa	Medium metro	49
Sarasota	Medium metro	303
Seminole	Large metro	114
Sumter	Small metro	131
Suwannee	Rural	69
Taylor	Rural	.
Union	Rural	7
Volusia	Medium metro	211

---

Wakulla	Medium metro	3
Walton	Small metro	35
Washington	Rural	26

---