

Evaluating Apple Inc. mobility trend data related to the COVID-19 outbreak in Japan

Junko Kurita¹⁾, Tamie Sugawara²⁾, Yasushi Ohkusa²⁾

1) Department of Nursing, Tokiwa University, Ibaraki, Japan

2) National Institute of Infectious Diseases, Tokyo, Japan

Corresponding author: Junko Kurita, kuritaj@tokiwa.ac.jp

Keywords: peak, COVID-19, SIR model, Mobility Trend Data, Apple, counter measure

Abstract

Background: In Japan, as a countermeasure against the COVID-19 outbreak, voluntary restrictions against going out (VRG) from a residence were announced from the end of March by national and local governments in preference to lockdowns like those instituted in European and North American countries.

Object: We examined some associations among going out information provided by Apple Inc. and estimated an effective reproduction number $R(t)$.

Method: We regressed $R(t)$ on a polynomial function of daily Apple Inc. data. From estimation using the whole period, the sub-periods delimited by March 10 were analyzed.

Results: Estimation results indicate $R(t)$ as 1.72 if VRG ceases and mobility reverts to a normal level. However, the critical level of $R(t) < 1$ was achieved at a 89.3% of the normal level of mobility.

Discussion and Conclusion: Results indicate that a 10% reduction from the normal number of trips will be necessary until herd immunity is achieved. Complete cessation of VRG might not be necessary to avoid re-emergence of the outbreak.

Introduction

As a countermeasure against the COVID-19 outbreak in Japan, voluntary restrictions against going out (VRG) were announced from the end of March by national and local governments in preference to lockdowns such as those instituted in European and North American countries [1]. However, the intensity of VRG requirements has been changing over time. Cooperation for VRG has also been changing.

To date, susceptible–infected–recovery (SIR) models for COVID-19 incorporating countermeasures have emphasized the date of initiation of countermeasures [2–4]. However, at least in the case of Japan, VRG has expanded gradually. Therefore, an all-or-nothing approach such as that implied by a SIR model might not be appropriate. A more continuous variable is expected to be necessary to represent compliance with VRG over time.

Those variables have been reported at several sites including Apple Inc. and Alphabet Inc. (hereinafter Apple and Google, respectively) worldwide, and Nippon Telegraph and Telephone (NTT) and East and West Japan Railway companies (JR) in Japan. Of those, Apple, as the front runner of this service, started to provide related data from January 13. The daily information included the number of trips from homes by type, such as driving and walking [5].

Using trip information provided by Apple, we examined various associations and estimated the effective reproduction number $R(t)$.

Methods

When applying a simple susceptible–infected–recovery (SIR) model [2–4] to the epidemic curve in Japan, with its 120 million population, we assume an incubation period that conforms to the empirical distribution in Japan. The number of symptomatic patients reported by the Ministry of Labour, Health and Welfare (MLHW) for February 10 – April 30, published [6] on May 13 was used. Some patients were excluded from data in Japan: those presumed to be persons infected abroad or infected as passengers on the Diamond Princess. Those patients were presumed not to represent community-acquired infection in Japan. For onset dates of some symptomatic patients that were unknown, we estimated their onset date from an empirical distribution with the duration extending from the onset to the report date among patients for whom the onset date had been reported.

We estimated the onset date of patients for whom onset dates were not reported as follows: Letting $f(k)$ represent this empirical distribution and letting N_t denote the number of patients for whom onset dates were not available published at date t , then the

number of patients for whom the onset date was known is $t-1$. The number of patients for whom onset dates were not available was estimated as $f(1)N_t$. Similarly, the number of patients with onset date $t-2$ and for whom onset dates were not available were estimated as $f(2)N_t$. Therefore, the total number of patients for whom the onset date was not available, given an onset date of s , was estimated as $\sum_{k=1} f(k)N_{s+k}$ for the long duration extending from s .

Moreover, the reporting delay for published data from MHLW might be considerable. In other words, if $s+k$ is larger than that in the current period t , then $s+k$ represents the future for period t . For that reason, N_{s+k} is not observable. Such a reporting delay engenders underestimation bias of the number of patients. For that reason, it must be adjusted as $\sum_{k=1}^{t-s} f(k)N_{s+k} / \sum_{k=1}^{t-s} f(k)$. Similarly, patients for whom the onset dates were available are expected to be affected by the reporting delay. Therefore, we have $M_{s|t} / \sum_{k=1}^{t-s} f(k)$, where $M_{s|t}$ represents the reported number of patients for whom onset dates were within period s , extending until the current period t .

We defined $R(t)$ as the number of the infected patients on day t divided by the number of patients who were presumed to be infectious. The number of infected patients was calculated from the epidemic curve by the onset date using a distribution of incubation period. The distribution of infectiousness in symptomatic and asymptomatic

cases was assumed to be 30% on the onset day, 20% on the following day, and 10% for the subsequent five days [7].

To clarify associations among $R(t)$ and Apple data, we regressed $R(t)$ on a polynomial function of daily Apple data. The order of the polynomial function was determined stepwise from the model including only a linear term to the model including higher order if all estimated coefficients were significant. In addition to estimation using the whole period, the sub-periods split by March 10 were analyzed. We adopted 5% as the significance level.

Results

During February 10 – April 30 in Japan, 13,967 community-acquired cases were identified, excluding asymptomatic cases. Figure 1 presents an empirical distribution of the duration of onset to report in Japan. The maximum delay was 30 days. Figure 2 depicts the empirical distribution of incubation periods among 91 cases for which the exposed date and onset date were published by MHLW in Japan. The mode was six days. The average was 6.6 days.

Figure 3 depicts the estimated $R(t)$ in Japan. It showed the peak of $R(t)$ as March 28 in Japan. Table 1 presents the estimation result. In the whole period and after the March

10 period, up to cubic terms were selected. However, before the March 10 period, the quadratic term was selected. The estimated coefficients in the whole period and after March 10 period were similar. However, they differed greatly from the sub-period before March 10.

Figure 3 depicts the $R(t)$ and predicted line from Apple Inc. data in the whole period and two sub periods. The goodness of fit in the whole period is apparently bad, especially around the peak at the end of March. Conversely, the prediction in the post March 10 sub period is apparently a good fit around the peak.

The estimation result means that $R(t)$ will be 1.72 if VRG ceases and mobility reverts to a normal level, which was 100 in the Apple data. Therefore, complete cessation of VRG will re-initiate the outbreak. The critical level of $R(t) < 1$ was found to be 89.3 based on the Apple data.

Discussion

Estimation results and Figure 3 suggest that a model with two sub-periods might be preferable to use of the whole model. Such a model might be consistent with an apparent change in the dominant virus among SARS-CoV-2 occurring in March [8]. Estimations seem to indicate that the Wuhan-originated strain was dominant before the

end of March, but after the end of March, a mutated virus became dominant in European countries and the USA. These two virus subtypes might have different infectiousness and thus different association with the mobility data.

Results also show a critical level of $R(t) < 1$ as 89.3 from Apple data. Consequently, a 10% point reduction in trips from home will be necessary until herd immunity is achieved, probably for more than one year. Therefore, complete cessation of VRG might not be necessary to avoid re-emergence of an outbreak. Because current VRG data indicate a 40% point reduction from Apple data, restrictions against going out can be relaxed by 30 percentage points. Such relaxation might include restarting of school or private events and sports that involve small numbers of players, little player contact, and large outside spaces. Large entertainment events or professional sports events with numerous participants might continue to be risky. In other words, partial relaxation of VRG consistent with a controlled outbreak and economic activity can be monitored for $R(t)$ to keep it as less than one, but not as an extremely small number. Apple Inc. data might support fine control of the outbreak.

An advisory council for control of the COVID-19 outbreak in Japan has required an 80% point reduction since the emergency declaration on April 8 [9]. Actually, trips outside the home decreased 40% from the normal level, but the outbreak has been

decreasing. It has become apparent that the requirement was greater than necessary. The experience has at least produced some evidence of what a request of 80% reduction elicits from citizens. Our study results indicate that a mere 11% point reduction might be sufficient to control an outbreak. In the early stage of outbreak, R_0 of 0.6 was found [10], which would mean that an outbreak would never occur in Japan. Such estimates might also mislead policies for countermeasures in Japan, which have so far necessitated adherence to contact tracing to detect clusters.

Earlier research [11] using Apple and Google data worldwide examined only linear terms. However, we found that higher terms might be important to predict $R(t)$. Higher prediction power from Apple data might imply that prediction of $R(t)$ using Apple data might be more reliable. Especially, the estimated $R(t)$ in a few days was less precise because the incubation period is about six days in average. Increasing $R(t)$ over time passing until six days was a widely observed phenomenon. Conversely, Apple data are available the next day. It might be possible to predict the latest $R(t)$ from Apple data.

We used Apple Inc. data only instead of data from Google or other sites. Apple started to provide data earliest and has continued to provide it on a timely basis. Therefore, it has been the most appropriate to evaluate the outbreak dynamics and to predict them prospectively.

The present study has some limitations. First, $R(t)$ was not determined for the number of contacts only. It depends on other circumstances of outbreak including the proportion of susceptible persons or the infectiousness of asymptomatic people. These were not incorporated into the analysis of $R(t)$. To take such data into consideration, we must use a SIR model that includes asymptomatic cases. That is anticipated to be a challenge for future research.

Secondly, we examined this problem only for the entirety of Japan. Because Apple provides this information by prefecture, we can extend it to affected prefectures such as Tokyo, Osaka, and Hokkaido.

Thirdly, one must be reminded that Apple data show the proportion of users leaving their residence. The data do not directly indicate a number or rate of contact. In other words, Apple data show no intensity of the respective contacts. However, measurements of contact intensity are very difficult. That measurement represents a future research objective.

Fourthly, even though Apple data was better than others, the users of Apple products and services might be limited to young or healthy persons. On the other hand, information from NTT or JR might not be limited the users. Therefore, combination of

these data with Apple data might be better than the present study. It should be our next challenge.

Conclusion

We demonstrated that mobility data from Apple Inc. are useful for short-term prediction of $R(t)$. Moreover, 11% point reduction in trips from home was sufficient to maintain $R(t) < 1$.

The present study is based on the authors' opinions: it does not reflect any stance or policy of their professionally affiliated bodies.

Acknowledgments

We acknowledge the great efforts of all staff at public health centers, medical institutions, and other facilities who are fighting the spread and destruction associated with COVID-19.

Reference

1. Japan Times. Tokyo governor urges people to stay indoors over weekend as virus cases spike,

<https://www.japantimes.co.jp/news/2020/03/25/national/science-health/tokyo-logs-40-coronavirus-cases/#.Xr4TV2eP604> [accessed on May 14, 2020]
2. Kurita J, Sugawara T Ohkusa Y. Preliminary evaluation of voluntary event cancellation as a countermeasure against the COVID-19 outbreak in Japan as of 11 March, 2020. <https://www.medrxiv.org/content/10.1101/2020.03.12.20035220v1>
3. Kurita J, Sugawara T Ohkusa Y. Forecast of the COVID-19 outbreak, collapse of medical facilities, and lockdown effects in Tokyo, Japan.

<https://medrxiv.org/cgi/content/short/2020.04.02.20051490v1>
4. Ohkusa Y, Sugawara T, Taniguchi K, Okabe N. Real-time estimation and prediction for pandemic A/H1N1(2009) in Japan. *J Infect Chemother.* 2011;17:468-72.
5. Apple. Mobility trend Data. <https://www.apple.com/covid19/mobility> (in Japanese)

[accessed on May 13]

6. Japan Ministry of Health, Labour and Welfare. Press Releases.

https://www.mhlw.go.jp/stf/newpage_10723.html (in Japanese) [accessed on May 14, 2020]
7. Kimball A, Hatfield KM, Arons M, James A, Taylor J, Spicer K, Bardossy AC, Oakley LP, Tanwar S, Chisty Z, Bell JM, Methner M, Harney J, Jacobs JR, Carlson CM, McLaughlin HP, Stone N, Clark S, Brostrom-Smith C, Page LC, Kay M, Lewis J, Russell D, Hiatt B, Gant J, Duchin JS, Clark TA, Honein MA, Reddy SC, Jernigan JA; Public Health ? Seattle & King County; CDC COVID-19 Investigation Team. Asymptomatic and Presymptomatic SARS-CoV-2 Infections in Residents of a Long-Term Care Skilled Nursing Facility - King County, Washington, March 2020. *Morb Mortal Wkly Rep.* 2020 Apr 3;69(13):377-381.

doi: 10.15585/mmwr.mm6913e1.
8. National Institute of Infectious Diseases. Survey of genomic molecular epidemiology survey for SARS-CoV-2.

<https://www.niid.go.jp/niid/ja/basic-science/467-genome/9586-genome-2020-1.htm>

l (in Japanese) [accessed on May 14, 2020]
9. Japan Times. Japan state of emergency to cover Tokyo, Osaka and five other prefectures

<https://www.japantimes.co.jp/news/2020/04/06/national/japan-state-of-emergency-c>

[ovid-19/#.XpPANv37RaQ](https://www.japantimes.co.jp/news/2020/04/06/national/japan-state-of-emergency-c-ovid-19/#.XpPANv37RaQ) [accessed on May 15,2020]

10. Nishiura H, Oshitani H, Kobayashi T, Saito T, Sunagawa T, Wakita T, MHLW

COVID-19 Response Team, Suzuki M. Closed environments facilitate secondary

transmission of coronavirus disease 2019 (COVID-19). doi:

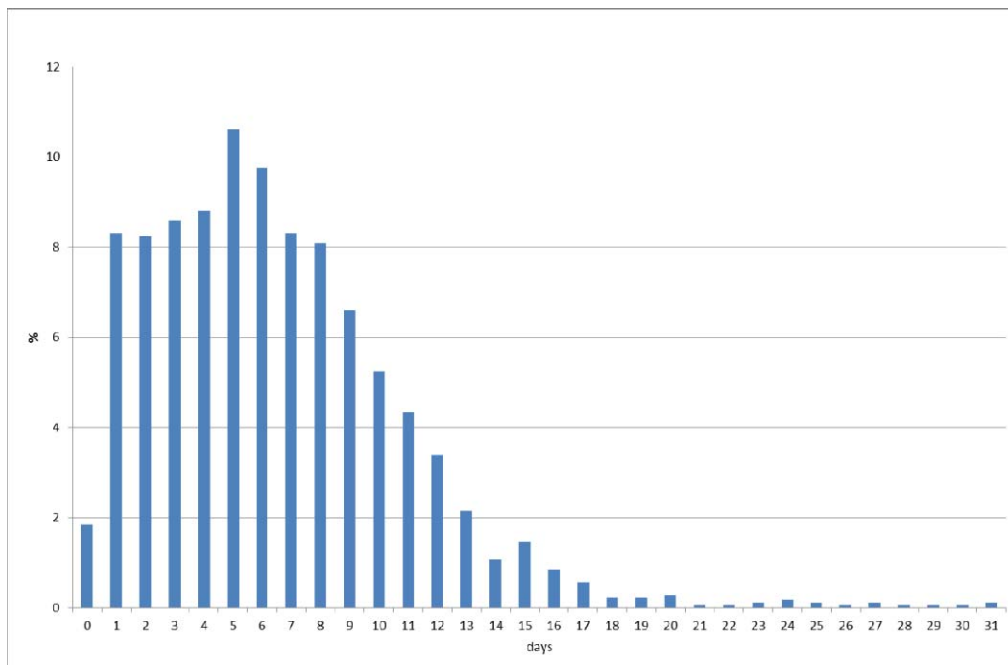
<https://doi.org/10.1101/2020.02.28.20029272>

11. Bergman N, Fishman R. Mobility Reduction and Covid-19 Transmission Rates. **doi:**

<https://doi.org/10.1101/2020.05.06.20093039>

Figure 1: Empirical distribution of duration from onset to report by MLHW, Japan.

(%)



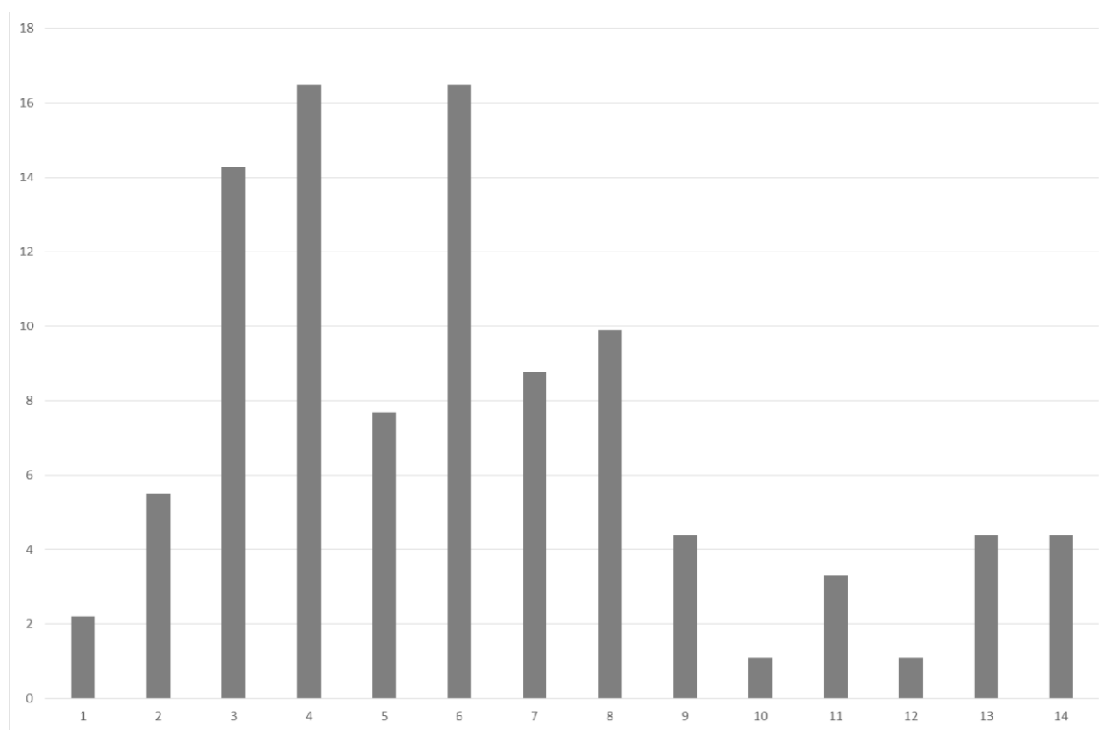
Note: Bars represent the probability of duration from onset to report based on 657

patients for whom the onset date was available in Japan. Data were obtained from

MLHW, Japan.

Figure 2: Empirical distribution of the incubation period published by MLHW, Japan.

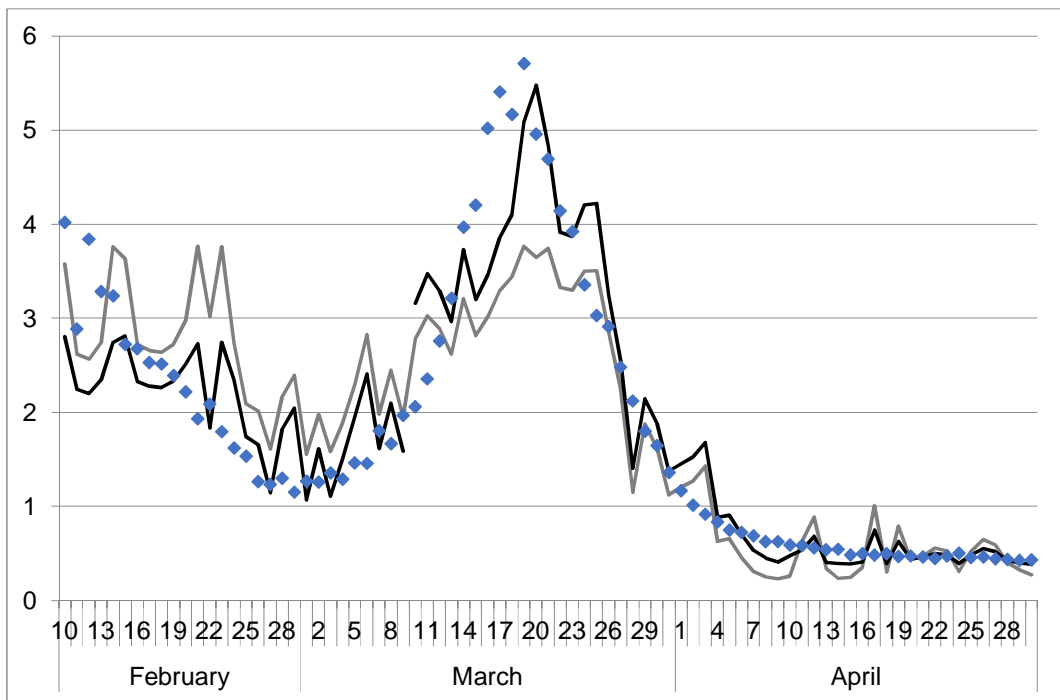
(%)



(days)

Notes: Bars show the distribution of incubation periods for 91 cases for which the exposure date and onset date were published by MLHW, Japan. The patients for whom incubation was longer than 14 days are included in the bar shown for day 14.

Figure 3: $R(t)$ and prediction from the Apple data.



Note: Two black lines indicate prediction in the sub period before and after March 10.

Gray line indicates prediction in the whole period. Dots indicate the estimated $R(t)$.

Table: Estimation results of estimate R(t) on the information provided from Apple.

	Whole period		Before March 10		After March 10	
	Estimate	<i>p</i> -values	Estimate	<i>p</i> -values	Estimate	<i>p</i> -values
	coefficients		coefficients		coefficients	
Linear term	-0.705	0.000	0.451	0.004	-0.408	0.008
Quadratic term	0.007	0.000	-0.002	0.006	0.004	0.008
Cubic term	-0.228*10 ⁻⁴	0.000			-0.126*10 ⁻⁴	0.023
Constant	21.55	0.000	-27.26	0.005	13.51	0.008
Adjusted R ²	0.701		0.349		0.891	
Number of observations	81		29		52	

Note: The dependent variable was R(t) and explanatory variables were polynomial function of Apple data.