

# 1 Influence of body mass index on SAPS3 prognostic performance in 2 critically ill patients from Brazil

3  
4 Isabella B. B. Ferreira<sup>1#</sup>, Rodrigo C. Menezes<sup>2#</sup>, Matheus L. Otero<sup>3</sup>, Thomas A. Carmo<sup>3,4</sup>,  
5 Gabriel P. Telles<sup>5</sup>, Bruno V. B. Fahel<sup>5</sup>, Manoel Barral-Netto<sup>6</sup>, Maria B. Arriaga<sup>4,6,7</sup>, Kiyoshi  
6 F. Fukutani<sup>4,6</sup>, Licurgo Pamplona Neto<sup>8</sup>, Gabriel A. Agareno<sup>8</sup>, Sydney Agareno<sup>8</sup>, Kevan M.  
7 Akrami<sup>6,7,9\*</sup>, Nivaldo M. Filgueiras Filho<sup>1,5,10\*</sup>, Bruno B. Andrade<sup>3,4,5,6,7\*</sup>

- 8
- 9 1. Universidade do Estado da Bahia (UNEB), Salvador, Bahia, Brazil
  - 10 2. União Metropolitana para o Desenvolvimento da Educação e Cultura (UNIME),  
11 Salvador, Bahia, Brazil
  - 12 3. Universidade Salvador (UNIFACS), Salvador, Bahia, Brazil
  - 13 4. Multinational Organization Network Sponsoring Translational and Epidemiological  
14 Research (MONSTER) Initiative, Fundação José Silveira, Salvador, Brazil.
  - 15 5. Escola Bahiana de Medicina e Saúde Pública (EBMSP), Salvador, Bahia, Brazil
  - 16 6. Instituto Gonçalo Moniz, FIOCRUZ, Salvador, Bahia, Brazil
  - 17 7. Faculdade de Medicina da Bahia, Universidade Federal da Bahia, Salvador, Brazil.
  - 18 8. Hospital da Cidade, Intensive Care Unit, Salvador, Bahia, Brazil
  - 19 9. Division of Infectious Diseases and Pulmonary Critical Care and Sleep Medicine.  
20 Department of Medicine, University of California, San Diego, California
  - 21 10. Hospital da Cidade, NEPC, Salvador, Bahia, Brazil

22  
23 #These authors equally contributed to the work.

24 \*These senior authors equally contributed to the work.

25 **Corresponding Authors:** kakrami@ucsd.edu (KMA) and bruno.andrade@fiocruz.br (BBA)

26

**NOTE: This preprint reports new research that has not been certified by peer review and should not be used to guide clinical practice.**

27 **Abstract**

28 Obesity has emerged as a significant global health problem, and its association with increased  
29 morbidity and mortality is well established. An obesity paradox has been extensively documented  
30 in the critically ill, appearing as a protective factor. Whether body mass index (BMI) impacts critical  
31 care severity scores has not been extensively studied previously, particularly in developing  
32 countries. This study aimed to evaluate the performance of severity scores across different BMI  
33 categories in a tertiary intensive care unit in Brazil. Observational and analytical cohort study in a  
34 general ICU in Northeastern Brazil between August 2015 and July 2018 that included all patients  
35 over 18 years of age admitted to the ICU. A total of 2,179 patients were included, with a mean age  
36 of 67.9 years and female predominance (53.1%). Similar to previous findings, those with  
37 overweight and obesity of any grade were not significantly associated with mortality, though for  
38 each additional 1kg/m<sup>2</sup> there was a decrease of 0.04% in odds of death. The Simplified Acute  
39 Physiology Score III (SAPS3) accurately predicted mortality in all groups except in those  
40 underweight. Low weight appeared as an independent risk factor for mortality in the ICU.  
41 Furthermore, this is the first study to identify poor prognostic performance of a common ICU  
42 severity score in those with low weight, highlighting the need for alternative more precise metrics.

43

44

45

46

47 **Introduction**

48           The number of obese individuals has tripled since 1975, affecting nearly 13% of the world's  
49 adult population <sup>1</sup>. In Brazil, obesity affects one in five adults <sup>2</sup>.

50           With rising prevalence of obesity in the general population, there will invariably be a higher  
51 proportion of obese patients in intensive care units (ICU) <sup>3</sup>. Multiple studies previously noted an  
52 inverse relationship between obesity and mortality in those with critical illness <sup>4,5</sup>. Moreover, given  
53 the influence of obesity on mortality, it is unclear whether existing prognostic scores perform well  
54 across all ranges of body mass index. A recent retrospective study in the United States found that  
55 inclusion of body mass index (BMI) as a variable in ICU severity scores did not improve discriminative  
56 function <sup>6</sup>. As such, it is critical to determine how prognostic scores perform in a Brazilian ICU  
57 population. To determine performance of a commonly used ICU severity score across BMI  
58 categories, we evaluated a large cohort of hospitalized patients in a general ICU in Northeastern  
59 Brazil.

60

61

62

63

64

65

66

67

68

69

70

71

72

73

74 **Results**

75 During the study period, 2,401 patients were admitted to the ICU, 222 individuals without data  
76 were excluded yielding a final cohort of 2,179 patients (Figure 1). Significant differences when  
77 stratified by BMI groups included older age, longer length of stay both in the ICU and prior to ICU  
78 admission in the underweight group. Clinically relevant differences at time of ICU admission included  
79 lower mean arterial pressure and increased C-reactive protein in the underweight group (Table 1).

80 A total of 343 (15.7%) deaths occurred in the ICU during the study period, a mortality rate  
81 comparable to that predicted by the SAPS3 score (13.3%). When mortality was stratified by weight,  
82 underweight participants compared to eutrophic had a higher rate of death than predicted by SAPS3  
83 (37% vs 26.6%), higher admission SAPS3 (54.0 vs 48.5,  $p < 0.0001$ ) and MFI (1.94 vs 1.62  $p = 0.019$ )  
84 (Supplemental Table 1). In contrast, overweight, obese and advanced obese individuals had lower  
85 rates of death than expected by SAPS3 (10.9%, 7.7%, 8.2% vs 14.5%, 13.3%, 14.8%, respectively).  
86 The ability of SAPS3 to predict mortality was evaluated for each BMI group. We found that  
87 discriminate function was excellent in all groups except those underweight, with significantly  
88 decreased AUC reflecting decreased sensitivity and specificity for SAPS 3 performance (Figure 2).

89 Univariate analysis demonstrated a significant increased odd of death 3.71 (95% CI, 2.65-  
90 5.18)] for underweight patients (Supplemental Figure 1). Overweight, obese and advanced obese  
91 patients demonstrated a significantly reduced odd of death [95% CI, 0.55 (0.42-0.70), 0.36 (0.22-  
92 0.58) and 0.38 (0.19-0.75),  $p$ -value  $< 0.0001$ ,  $< 0.0001$  and 0.0038 respectively]. Cancer and stroke  
93 were comorbidities associated with mortality independent of BMI subgroup (Supplemental Table 2).  
94 The following factors identified in univariate analysis (Supplemental Table 2) were evaluated in a  
95 multivariate regression model to determine the impact on mortality: heart rate, respiratory rate,  
96 vasopressor use, length of stay prior to ICU, urea, creatinine, cancer, stroke, C-reactive protein use  
97 of mechanical ventilation and BMI category. Increased mortality persisted in the underweight group  
98 with an OR 3.50 (95% CI, 1.43-8.58,  $p = 0.006$ ), while the overweight and obese groups did not result  
99 in lower probability of death when adjusted for other variables in the multivariate model. Use of  
100 mechanical ventilation OR 3.11 (95% CI, 4.90-8.24,  $p < 0.0001$ ) and use of vasopressors OR 2.69

101 (95% CI, 1.74-4.18,  $p < 0.0001$ ) were variables that fit best with mortality in our model (Supplemental  
102 Figure 1). In a Cox regression model, the variables that result in survival differences amongst the  
103 study groups were: underweight, vasopressor use, cancer (Figure 3).

104 A log-rank test was performed to determine whether differences in the survival distribution  
105 existed for the different types of study groups (underweight, overweight, obese I and obese II/III),  
106 using normal weight as the reference. After a median follow up of 32 days, the only statistically  
107 significant survival distribution was the comparison of underweight with normal weight, HR = 2.05  
108 (95% 1.55- 2.71),  $p < 0.01$ . When the groups were stratified for SAPS3 score, only the obese II/III  
109 category lacked a significant difference when compared to those with high and low SAPS3  
110 (considering a high score value  $> 50$ ). An ICU survival analysis over the course of the study using  
111 a BMI cutoff of 18.5kg/m<sup>2</sup> determined by ROC analysis demonstrated decreased survival in the  
112 underweight compared to the non-underweight population (Figure 4). Moreover, when evaluated as  
113 a continuous variable, the BMI presented statistical significance on both the univariate and  
114 multivariate analysis ( $p < 0,0001$  and  $p = 0,011$ , respectively), with a decrease of 0.04% in the odds of  
115 mortality for each additional 1kg/m<sup>2</sup> (Figure 5).

116

117 **Discussion**

118 This study is one of the first to evaluate, in Brazilian population, whether BMI affects accuracy  
119 of prognostic scores and outcomes in ICU.

120 Prognostic scores in critically ill individuals are intended to identify those most at risk of death  
121 during screening, particularly in resource-limited settings. In our study, while SAPS3 performed well  
122 in the overweight, obese, and eutrophic groups, there was a significant lack of prognostic  
123 discrimination in underweight patients. Similarly, Deliberato et al, 2019 demonstrated that the  
124 performance of the APACHE IV and OASIS severity scores were inconsistent across BMI  
125 categories<sup>6</sup>. In a prior study including only obese and eutrophic patients, it appeared that  
126 misclassification of prognostic scores, within the same severity of illness category, may result from  
127 primarily from differences in baseline laboratory markers in these two populations. It may be that this  
128 is may explain why severity scores performed poorly in underweight patients <sup>6</sup>.

129 Previous international research has demonstrated conflicting results regarding the  
130 association between BMI and mortality, with 4 observational studies finding that a BMI between 25-  
131 35kg/m<sup>2</sup> was associated with greater short and medium term mortality <sup>7-10</sup>, while 14 studies and a  
132 metaanalysis found no mortality difference based on BMI <sup>11-23</sup> in contrast to 14 studies and two  
133 metaanalysis finding increases in BMI to be protective in the ICU <sup>3,16,24-35</sup>. We determined that  
134 underweight individuals are at an increased risk of death and obesity may not be protective when  
135 adjusted for significant comorbidities including stroke and cancer.

136 Several hypotheses may explain why underweight, as opposed to overweight and obese, is  
137 a risk factor in this population, though there is a paucity of rigorous clinical evidence. Obese patients  
138 tend to be younger at the time of ICU admission, a population generally at lower mortality risk <sup>5</sup>. This  
139 was evident in our findings with a lower mean age among those with higher BMI. Alternatively,  
140 medical staff, anticipating possible risks and complications, may admit obese patients earlier to the  
141 ICU in relatively stable condition to initiate aggressive interventions <sup>4</sup>. In support of this hypothesis,  
142 obese individuals in our study were admitted with lower SAPS3 and CCI while underweight patients  
143 presented higher mean SAPS3 and MFI scores (Supplementary Table 1), albeit with poor predictive

144 performance. Others have suggested that obese individuals have a greater nutritional reserve,  
145 thereby offering protection against hypercatabolic states experienced during critical illness as  
146 compared to their underweight counterparts <sup>4,23</sup>. Still others hypothesize that the adipokine profile in  
147 obese patients may modulate and dampen immunological response to severe acute illness which  
148 may be absent in the underweight population <sup>4</sup>. While we did not confirm obesity as a protective  
149 factor when adjusting for comorbidities, a mortality risk for underweight critically ill patients found in  
150 our study mirrors prior work in the developed world <sup>23,24,32,34</sup>. While there may be unknown host or  
151 environmental factors that differ between critically ill patients in Brazil and other developed countries,  
152 it is unlikely that this has influenced the findings that underweight status independently increases  
153 risk of death in the ICU.

154 Our study has certain limitations. First, as a single center there may be unmeasured residual  
155 confounders (ventilator settings, vasopressor doses, e.g.) that impacted mortality independent of  
156 BMI. The use of BMI as a parameter for obesity diagnosis, while useful at the population level, may  
157 not distinguish between lean mass and fat mass, thus being less precise in elderly and muscular  
158 individuals <sup>36</sup>. Moreover, BMI may not accurately assess visceral fat, a risk factor for disease  
159 independent of total body fat <sup>17</sup>. Future studies using BMI in conjunction with other methods to  
160 measure body fat may address this limitation. Height and weight measurements may have varied  
161 amongst healthcare professionals, compounded by possible differences in mean time elapsed  
162 between the weight assessment and ICU admission.

163

164

165 In conclusion, a greater chance of death was identified for underweight patients hospitalized  
166 in a general Brazilian ICU. Prognostic scores may overestimate risk of death in the obese while  
167 lacking discriminate function in predicting mortality in the underweight. Further studies will be needed  
168 to investigate whether this phenomenon persists in specific critically ill groups.

169

170

## 171 **Methods**

### 172 **Ethics approval and consent to participate**

173 All clinical investigations were conducted according to the principles expressed in the  
174 Declaration of Helsinki. Ethics approval and waiver of consent to participate was approved by the  
175 Research Ethics Committee of Hospital Ana Nery under the number 2.571.265 and CAAE  
176 52892315.1.0000.0045.

177

### 178 **Clinical study design**

179 Observational analytical cohort study conducted from August 2015 to July 2018 in a hospital  
180 with a general ICU of 22 beds in Salvador, Bahia, Brazil. All patients consecutively admitted to the  
181 ICU with length of stay longer than 24 hours were included. Patients under 18 years of age or those  
182 with missing data were excluded. Data was prospectively recorded in the Epimed Monitor system.

183 Covariates included: age, weight, height, sex, comorbidities, functional capacity, admission  
184 diagnosis, length of ICU and hospital stay, physiological and laboratorial data within the first 6 hours  
185 of admission, complications, use of supportive therapy in the ICU, ICU mortality and prognostic  
186 scores. We sought to determine whether mortality varied when stratified by body mass index (BMI)  
187 according to international standards recommended by WHO in underweight (BMI lower than  
188 18.5kg/m<sup>2</sup>), normal weight (BMI between 18.5 and 24.99 kg/m<sup>2</sup>), overweight (BMI between 25 and  
189 29.99 kg/m<sup>2</sup>), obese grade I (BMI between 30 and 34.99 kg/m<sup>2</sup>), obese grade II/III (BMI more than  
190 35 kg/m<sup>2</sup>)<sup>1</sup>. We then evaluated the influence of BMI on the prognosis of critically ill patients, and  
191 examined whether or not the Simplified Acute Physiology Score (SAPS3) was able to predict ICU



192 mortality accurately regardless of the BMI. Additionally, BMI was analyzed as a continuous variable  
193 to assess the analytical capacity of the variable. Through this analysis, we identified a BMI cutoff  
194 according to the receiver operator characteristics (ROC) curve analysis finding that a low weight BMI  
195 of 18.49 demonstrated the highest sensitivity for ICU mortality. This grouping was subsequently used  
196 in a Kaplan Meier survival analysis. The following Prognostic ICU scores were determined for all  
197 study patients: Modified Frailty Index (MFI), the SAPS3, the Charlson Comorbidity Index (CCI)  
198 without assigning points for age and Performance status, using a scale of zero to 2 based on the  
199 patient's ability to perform daily living activities <sup>37-40</sup>.

200

## 201 **Data Analysis**

202 Categorical variables were expressed as frequency and percentages, and continuous  
203 variables were expressed as mean (standard deviation, SD) for continuous variables with normal  
204 distribution, or median (interquartile range, IQR) for non-normal distribution, with normality being  
205 determined by Kolmogorov-Smirnov or Shapiro-Wilk test.

206 The proportion of categorical variables between groups were compared using the Fisher's  
207 exact test or chi-squared. The mean/median of continuous variables were compared using  
208 independent T-tests, for parametric variables, or Mann-Whitney U test, for non-parametric variables,  
209 when analyzing the outcome groups, and also using one-way analysis of variance (ANOVA), for  
210 parametric variables, or Kruskal-Wallis, for non-parametric variables, when analyzing BMI  
211 categories. All tests were two-tailed and considered statistically significant for  $p < 0.05$ .

212 In order to assess for potential confounders, variables that demonstrated possible statistical  
213 associations ( $p < 0.1$ ) with ICU mortality and BMI categories in univariate analysis were analyzed in  
214 multivariate models with calculation of odds ratio (OR) with a confidence interval (CI) of 95%. Binary  
215 logistic regression was used to identify characteristics independently associated with death in the  
216 ICU. Predictive performance of prognostic scores amongst the 5 groups was tested by calculating  
217 area under ROC curve with area under curve  $AUC > 0.8$  considered the best predictive test. With a  
218 Kaplan-Meier analysis, survival from 1 to 378 days was calculated according to the BMI stratification

219 cutoff identified by the ROC analysis. Continuous variables were transformed into categorical  
220 variables (based on means) and, utilizing the Log-rank test, the survival curves were compared and  
221 considered statistically significant for  $p < 0.05$ . We then applied the criteria of Hosmer Lemeshow:  
222 variables with  $p < 0.1$  in the Log-Rank test were eligible for the multivariate Cox model. To identify  
223 variables associated with survival, Hazard Ratios (HR) with confidence intervals were calculated.  
224 The data were analyzed with Microsoft Excel suite Office 365, GraphPad Prism version 6.01 and  
225 Statistical Package for the Social Sciences (SPSS), version 25.0.

226

227

228

229

230

231

232

233 **References**

- 234 1. World Health Organization. Obesity and overweight. *Fact sheets* (2018). Available at:  
235 <http://www.who.int/en/news-room/fact-sheets/detail/obesity-and-overweight>. (Accessed: 3rd  
236 March 2018)
- 237 2. Instituto Brasileiro de Geografia e Estatística. *Pesquisa nacional de saúde : 2013 :  
238 percepção do estado de saúde, estilos de vida e doenças crônicas : Brasil, grandes regiões  
239 e unidades da federação*. (2014).
- 240 3. Pickkers, P. *et al.* Body Mass Index Is Associated With Hospital Mortality in Critically Ill  
241 Patients. *Crit. Care Med.* **41**, 1878–1883 (2013).
- 242 4. Marques, M. B. & Langouche, L. Endocrine, Metabolic, and Morphologic Alterations of  
243 Adipose Tissue During Critical Illness\*. *Crit. Care Med.* **41**, 317–325 (2013).
- 244 5. Amundson, D. E., Djurkovic, S. & Matwiyoff, G. N. The Obesity Paradox. *Crit. Care Clin.* **26**,  
245 583–596 (2010).
- 246 6. Deliberato, R. O. *et al.* Severity of Illness Scores May Misclassify Critically Ill Obese  
247 Patients\*. *Crit. Care Med.* **46**, 394–400 (2018).
- 248 7. Bercault, N. *et al.* Obesity-related excess mortality rate in an adult intensive care unit: A risk-  
249 adjusted matched cohort study\*. *Crit. Care Med.* **32**, 998–1003 (2004).
- 250 8. Goulenok, C. *et al.* Influence of overweight on ICU mortality: a prospective study. *Chest* **125**,  
251 1441–1445 (2004).
- 252 9. Bisurgi, G. *et al.* [Obesity and outcomes in the ICU: an observational study]. *Clin. Ter.* **161**,  
253 505–509 (2010).
- 254 10. Pan, J., Shaffer, R., Sinno, Z., Tyler, M. & Ghosh, J. The obesity paradox in ICU patients. in  
255 *2017 39th Annual International Conference of the IEEE Engineering in Medicine and Biology  
256 Society (EMBC)* 3360–3364 (IEEE, 2017). doi:10.1109/EMBC.2017.8037576
- 257 11. Finkielman, J. D., Gajic, O. & Afessa, B. Underweight is independently associated with  
258 mortality in post-operative and non-operative patients admitted to the intensive care unit: a  
259 retrospective study. *BMC Emerg. Med.* **4**, 3 (2004).

- 260 12. Ray, D. E., Matchett, S. C., Baker, K., Wasser, T. & Young, M. J. The effect of body mass  
261 index on patient outcomes in a medical ICU. *Chest* **127**, 2125–2131 (2005).
- 262 13. Tafelski, S. *et al.* Obesity in critically ill patients is associated with increased need of  
263 mechanical ventilation but not with mortality. *J. Infect. Public Health* **9**, 577–585 (2016).
- 264 14. Lewis, O. *et al.* Body Mass Index and Intensive Care Unit Outcomes in African American  
265 Patients. *Ethn. Dis.* **27**, 161 (2017).
- 266 15. De Jong, A. *et al.* Medical Versus Surgical ICU Obese Patient Outcome. *Crit. Care Med.* **46**,  
267 e294--e301 (2018).
- 268 16. Sakr, Y. *et al.* Obesity is associated with increased morbidity but not mortality in critically ill  
269 patients. *Intensive Care Med.* **34**, 1999–2009 (2008).
- 270 17. Paolini, J.-B. M. *et al.* Predictive value of abdominal obesity vs. body mass index for  
271 determining risk of intensive care unit mortality. *Crit. Care Med.* **38**, 1308–1314 (2010).
- 272 18. Lim, S. Y. *et al.* The Body Mass Index as a Prognostic Factor of Critical Care. *Korean J.*  
273 *Intern. Med.* **25**, 162 (2010).
- 274 19. Moock, M. *et al.* O impacto da obesidade no tratamento intensivo de adultos. *Rev. Bras.*  
275 *Ter. Intensiva* **22**, 133–137 (2010).
- 276 20. Lucas, M. C. S. & Fayh, A. P. T. Estado nutricional, hiperglicemia, nutrição precoce e  
277 mortalidade de pacientes internados em uma unidade de terapia intensiva. *Rev. Bras. Ter.*  
278 *Intensiva* **24**, 157–161 (2012).
- 279 21. Rahman, A., Stapleton, R. D. & Heyland, D. K. Not All Critically Ill Obese Patients Are the  
280 Same: The Influence of Prior Comorbidities. *ISRN Obes.* **2012**, 1–7 (2012).
- 281 22. Robinson, M. K. *et al.* The Relationship Among Obesity, Nutritional Status, and Mortality in  
282 the Critically Ill\*. *Crit. Care Med.* **43**, 87–100 (2015).
- 283 23. Zampieri, F. G. & Colombari, F. A gradient-boosted model analysis of the impact of body  
284 mass index on the short-term outcomes of critically ill medical patients. *Rev. Bras. Ter.*  
285 *Intensiva* **27**, 141–148 (2015).
- 286 24. Toft-Petersen, A. P. *et al.* Exploring the impact of using measured or estimated values for

- 287 height and weight on the relationship between BMI and acute hospital mortality. *J. Crit. Care*  
288 **44**, 196–202 (2018).
- 289 25. Trivedi, V. *et al.* Impact of Obesity on Outcomes in a Multiethnic Cohort of Medical Intensive  
290 Care Unit Patients. *J. Intensive Care Med.* **33**, 97–103 (2018).
- 291 26. Sasabuchi, Y. *et al.* The Dose-Response Relationship Between Body Mass Index and  
292 Mortality in Subjects Admitted to the ICU With and Without Mechanical Ventilation. *Respir.*  
293 *Care* **60**, 983–991 (2015).
- 294 27. Viana, M. V. *et al.* Contrasting effects of preexisting hyperglycemia and higher body size on  
295 hospital mortality in critically ill patients: a prospective cohort study. *BMC Endocr. Disord.* **14**,  
296 50 (2014).
- 297 28. Tremblay, A. & Bandi, V. Impact of body mass index on outcomes following critical care.  
298 *Chest* **123**, 1202–1207 (2003).
- 299 29. Garrouste-Orgeas, M. *et al.* Body mass index. *Intensive Care Med.* **30**, 437–443 (2004).
- 300 30. Peake, S. L., Moran, J. L., Ghelani, D. R., Lloyd, A. J. & Walker, M. J. The effect of obesity  
301 on 12-month survival following admission to intensive care: a prospective study. *Crit. Care*  
302 *Med.* **34**, 2929–2939 (2006).
- 303 31. Abhyankar, S., Leishear, K., Callaghan, F. M., Demner-Fushman, D. & McDonald, C. J.  
304 Lower short- and long-term mortality associated with overweight and obesity in a large  
305 cohort study of adult intensive care unit patients. *Crit. Care* **16**, R235 (2012).
- 306 32. Sakr, Y. *et al.* Being overweight or obese is associated with decreased mortality in critically  
307 ill patients: A retrospective analysis of a large regional Italian multicenter cohort. *J. Crit. Care*  
308 **27**, 714–721 (2012).
- 309 33. Wardell, S. *et al.* The association between obesity and outcomes in critically ill patients.  
310 *Can. Respir. J.* **22**, 23–30 (2015).
- 311 34. Harris, K., Zhou, J., Liu, X., Hassan, E. & Badawi, O. The Obesity Paradox Is Not Observed  
312 in Critically Ill Patients on Early Enteral Nutrition\*. *Crit. Care Med.* **45**, 828–834 (2017).
- 313 35. Marik, P. E., Doyle, H. & Varon, J. Is obesity protective during critical illness? An analysis of

- 314 a national ICU database. *Crit. Care Shock* **6**, 156–162 (2003).
- 315 36. Winfield, R. D. Caring for the Critically Ill Obese Patient. *Nutr. Clin. Pract.* **29**, 747–750  
316 (2014).
- 317 37. Farhat, J. S. *et al.* Are the frail destined to fail? Frailty index as predictor of surgical morbidity  
318 and mortality in the elderly. *J. Trauma Acute Care Surg.* **72**, 1526–1531 (2012).
- 319 38. Metnitz, P. G. H. *et al.* SAPS 3—From evaluation of the patient to evaluation of the intensive  
320 care unit. Part 1: Objectives, methods and cohort description. *Intensive Care Med.* **31**,  
321 1336–1344 (2005).
- 322 39. Charlson, M. E., Pompei, P., Ales, K. L. & MacKenzie, C. R. A new method of classifying  
323 prognostic comorbidity in longitudinal studies: development and validation. *J. Chronic Dis.*  
324 **40**, 373–383 (1987).
- 325 40. Zampieri, F. G. *et al.* Admission factors associated with prolonged (>14 days) intensive care  
326 unit stay. *J. Crit. Care* **29**, 60–65 (2014).

327

328

329

330

331

332

333

334

335

336 **Acknowledgments**

337 Thank those who contributed directly or indirectly to the construction of this article, research groups  
338 GEMINI, linked to the Núcleo de Ensino e Pesquisa do Hospital da Cidade, and MONSTER, linked  
339 to the Osvaldo Cruz Foundation. The work of B.B.A. was supported by a grant from NIH (Rodrigo).  
340 I.B.B.F. was supported by UNEB: PICIN/UNEB. K.F.F. received a fellowship from the Programa  
341 Nacional de Pós-Doutorado, CAPES. The funders had no role in study design, data collection and  
342 analysis, decision to publish, or preparation of the manuscript. MBA was supported by a PhD  
343 fellowship from the Fundação de Amparo à Pesquisa do Estado da Bahia (FAPESB).

344

345 **Author's Contributions**

346 IBBF, KFF, MBA, BBA, KMA analyzed and interpreted the patient data regarding the impact of  
347 obesity in the ICU. RCM, GAA, GPT, MLO, TAC, BVBF performed chart review, data collection and  
348 manuscript review. MBN, LPN, SA provided study oversight and manuscript revision. NMFF, KMA  
349 and BBA were the major contributors to design, implementation and production of the manuscript.  
350 All authors read and approved the final manuscript.

351

352 **Data availability statement:**

353 The datasets used and/or analyzed during the current study are available from the corresponding  
354 author on reasonable request.

355

356 **Competing Interests**

357 The authors declare that they have no competing interests.

358

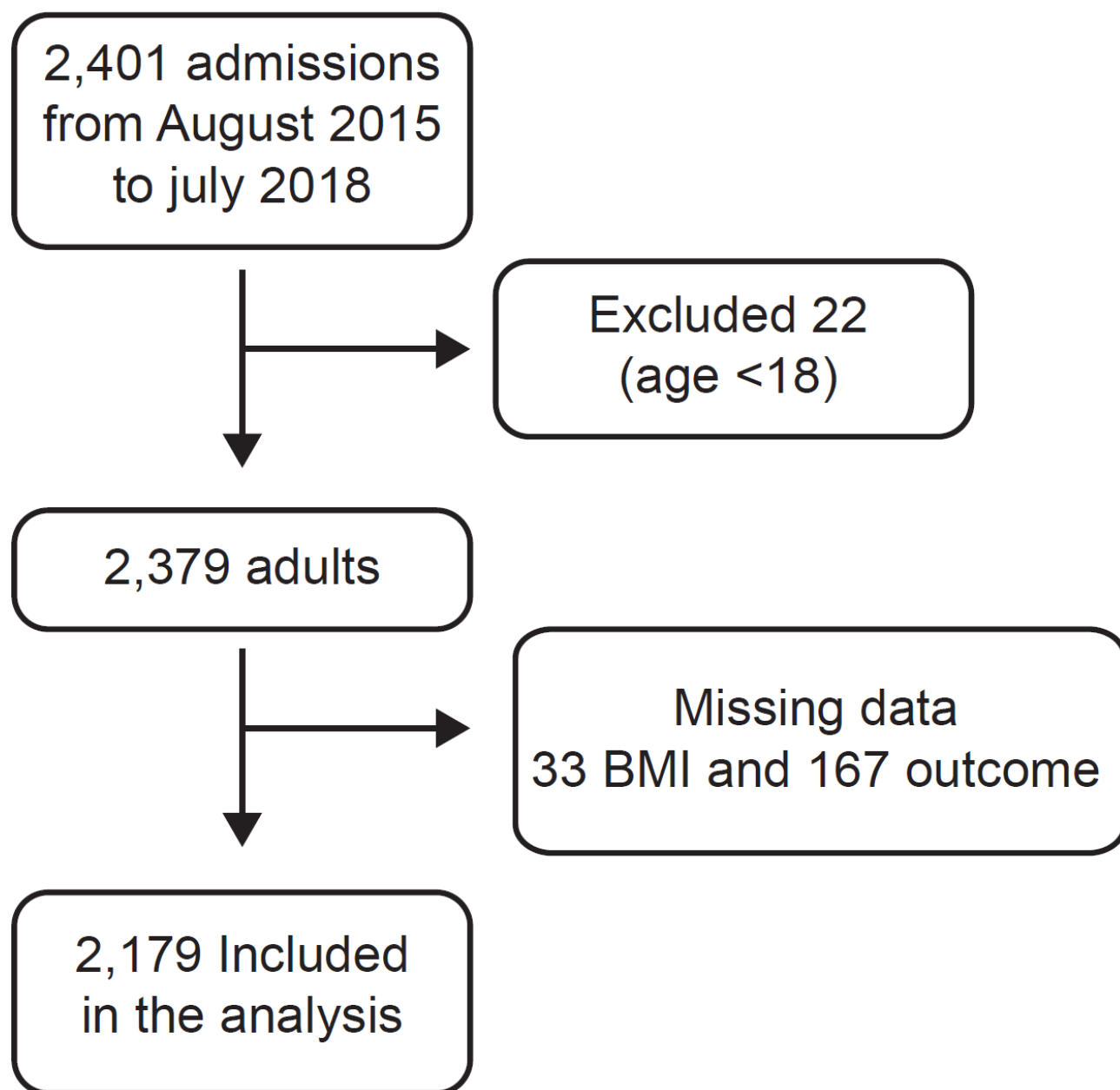
359

360

361

362

363 **Figure Legends**

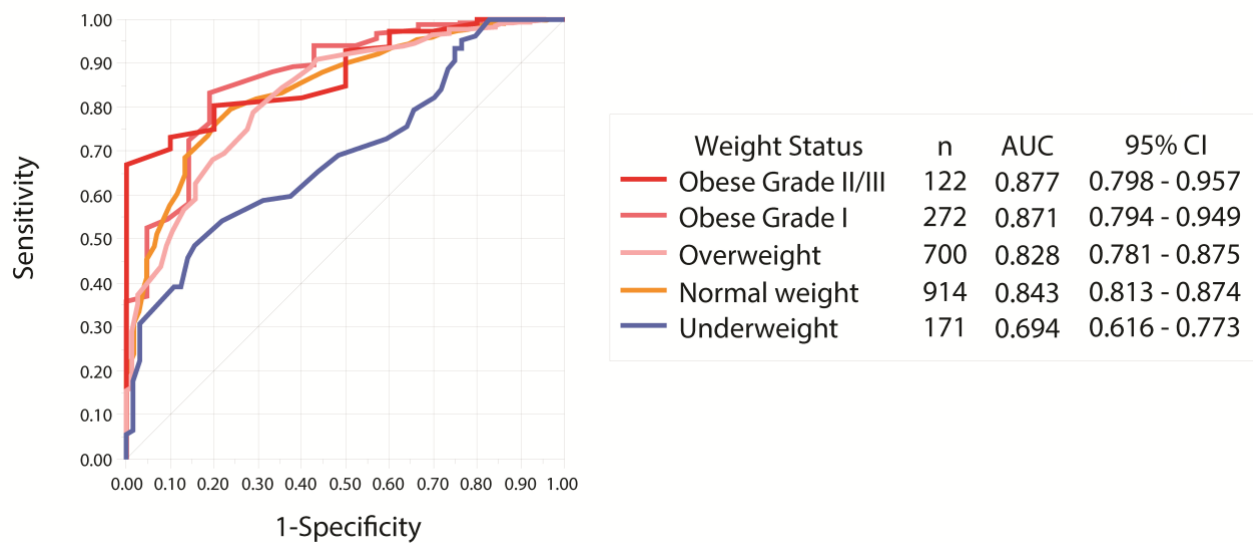


364

365 **Figure 1.** Flowchart of patients included in the study.

366





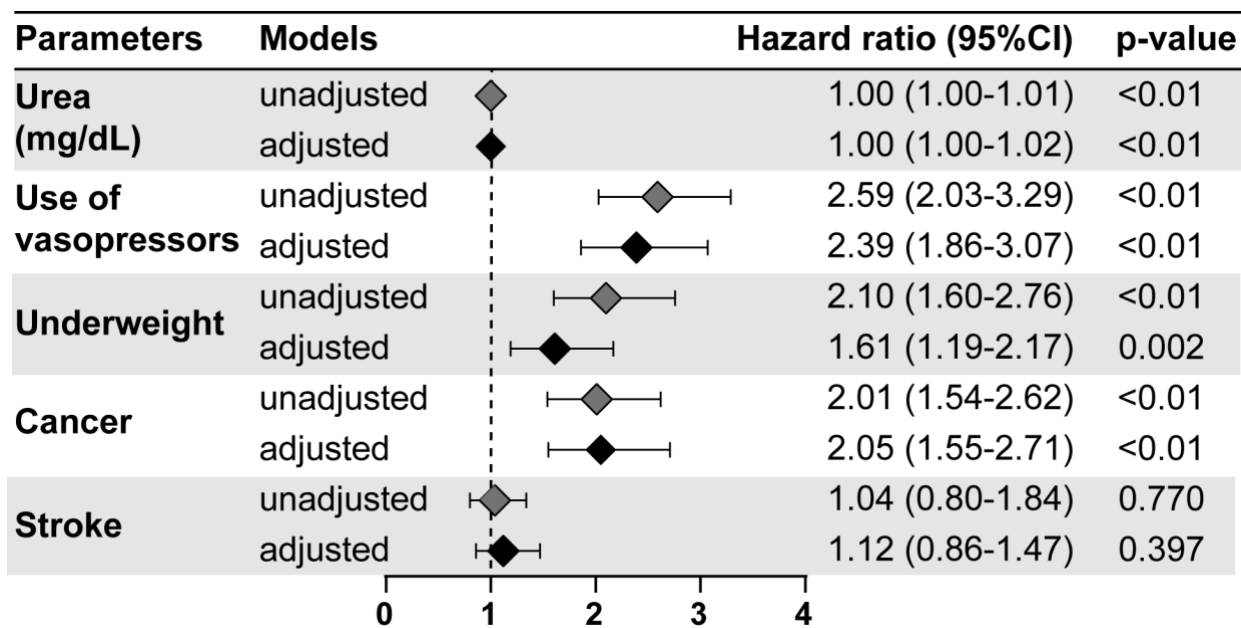
367

368 **Figure 2.** Performance of SAPS3 Mortality Prediction According to BMI Category.

369 SAPS3 performance was accurate in all BMI groups except those in underweight, where significantly

370 poor discriminate function was noted. P-value for all curves <0.001.

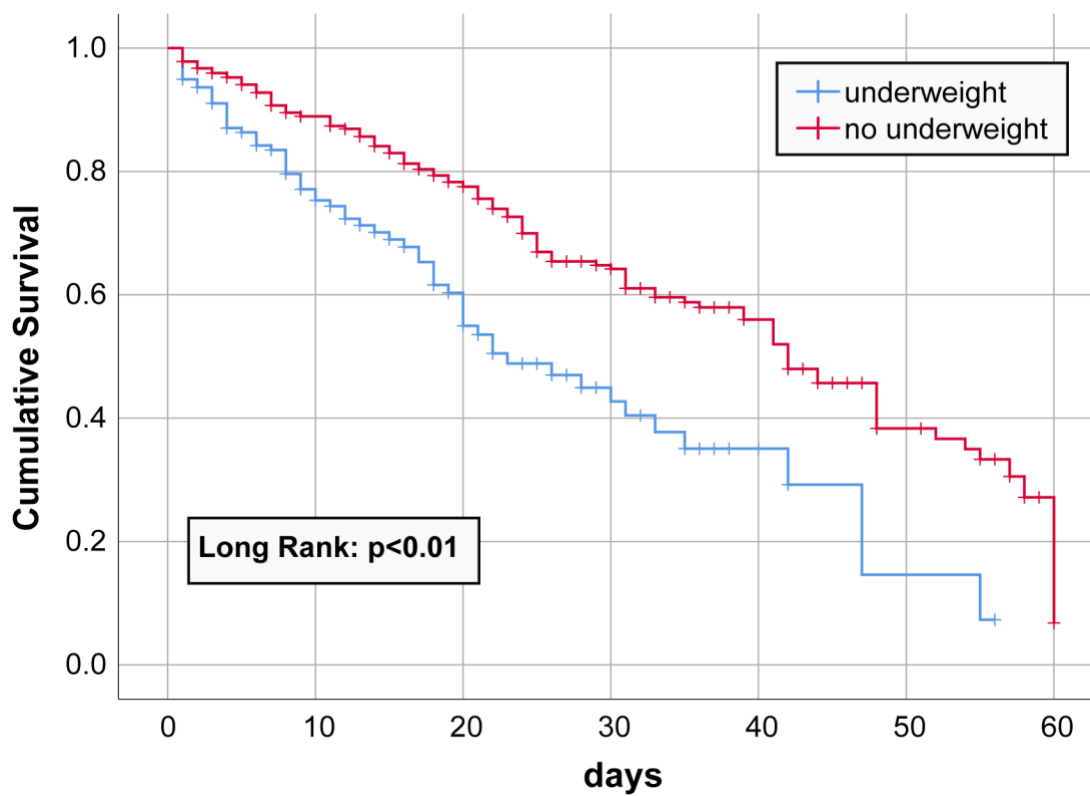
371



372

373 **Figure 3.** Cox Regression Analysis for ICU Mortality. Multivariate model yielded adjusted and  
 374 unadjusted Hazard Ratios for variable with significance in univariate analysis.

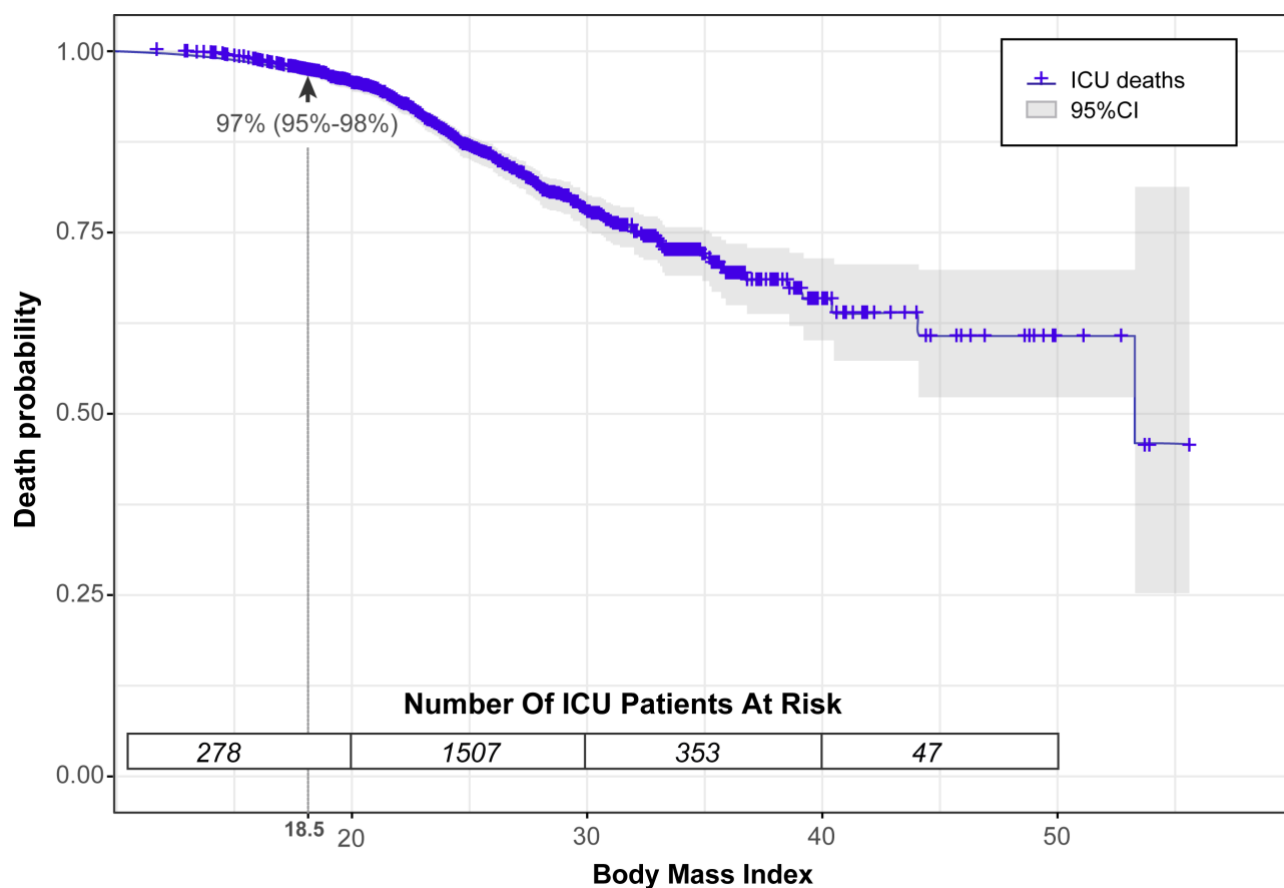
375



376

377 **Figure 4.** Kaplan Meier Survival Curve. A ROC curve analysis identified a BMI of 18.5kg/m<sup>2</sup> as a  
378 cutoff that was used to stratify the cohort and evaluate survival over the study period.

379



380

381 **Figure 5.** Death Probability According to BMI. For every 1kg/m<sup>2</sup> there is a reduction of 0.04%

382 probability of death.

383

384

385

386 **Table 1.** Study population characteristics.

| Population Characteristics                | Underweight<br>(n = 171) | Eutrophic<br>(n = 914) | Overweight<br>(n= 700) | Obese Grade I<br>(n = 272) | Obese Grade II/III<br>(n = 122) | p-value               |
|---|--------------------------|------------------------|------------------------|----------------------------|---------------------------------|-----------------------|
| <b>Age (mean, SD)</b>                     | 76.06 ± 16.39            | 69.48 ± 18.51          | 66.10 ± 16.73          | 64.67 ± 16.19              | 62.40 ± 18.78                   | < 0.0001              |
| <b>Gender, female (n, %)</b>              | 98 (57.3)                | 438 (47.9)             | 356 (50.9)             | 176 (64.7)                 | 90 (73.8)                       | < 0.0001              |
| <b>Admission Diagnosis (n, %).</b>        |                          |                        |                        |                            |                                 | < 0.0001 <sup>a</sup> |
| Cardiovascular                            | 25 (14.6)                | 152 (16.6)             | 160 (22.9)             | 81 (29.8)                  | 34 (27.9)                       |                       |
| Respiratory                               | 13 (7.6)                 | 55 (6.0)               | 40 (5.7)               | 13 (4.8)                   | 5 (4.1)                         |                       |
| Neurological                              | 22 (12.9)                | 171 (18.7)             | 115 (16.4)             | 41 (15.1)                  | 11 (9.0)                        |                       |
| Infectious                                | 57 (33.3)                | 184 (20.1)             | 96 (13.7)              | 30 (11.0)                  | 25 (20.5)                       |                       |
| Surgical                                  | 10 (5.8)                 | 141 (15.4)             | 143 (20.4)             | 65 (23.9)                  | 21 (17.2)                       |                       |
| Other                                     | 44 (25.7)                | 211 (23.1)             | 146 (20.9)             | 42 (15.4)                  | 26 (21.3)                       |                       |
| <b>Use of VAD</b>                         | 21 (12.3)                | 86 (9.4)               | 60 (8.6)               | 27 (9.9)                   | 7 (5.7)                         | 0.375                 |
| <b>Use of MV</b>                          | 32 (18.7)                | 157 (17.2)             | 110 (15.7)             | 38 (14.0)                  | 10 (8.2)                        | 0.081                 |
| <b>Length of stay prior to ICU (days)</b> | 4.95 ± 16.70             | 2.95 ± 14.58           | 1.65 ± 6.28            | 1.22 ± 4.77                | 1.08 ± 3.47                     | 0.001                 |
| <b>ICU length of stay (days)</b>          | 9.77 ± 12.86             | 9.34 ± 15.85           | 6.84 ± 10.74           | 6.79 ± 12.07               | 5.58 ± 5.51                     | < 0.0001              |
| <b>Congestive Heart Failure</b>           | 11 (6.4)                 | 59 (6.5)               | 44 (6.3)               | 13 (4.8)                   | 5 (4.1)                         | 0.257 <sup>a</sup>    |
| <b>Chronic Renal Failure</b>              | 17 (9.9)                 | 119 (13.0)             | 82 (11.7)              | 26 (9.6)                   | 7 (5.7)                         | 0.021 <sup>a</sup>    |
| <b>Cirrhosis</b>                          | 1 (0.6)                  | 9 (1.0)                | 14 (2.0)               | 3 (1.1)                    | 1 (0.8)                         | 0.453 <sup>a</sup>    |
| <b>Cancer</b>                             | 29 (17.0)                | 149 (16.3)             | 90 (12.9)              | 23 (8.5)                   | 11 (9.0)                        | 0.004 <sup>a</sup>    |
| <b>Immunodeficient</b>                    | 2 (1.2)                  | 17 (1.9)               | 4 (0.6)                | 3 (1.1)                    | 1 (0.8)                         | 0.056 <sup>a</sup>    |
| <b>Diabetes Mellitus</b>                  | 61 (35.7)                | 315 (34.5)             | 277 (39.6)             | 108 (39.7)                 | 56 (45.9)                       | 0.003 <sup>a</sup>    |
| <b>Coronary Artery Disease</b>            | 12 (7.0)                 | 86 (9.4)               | 106 (15.1)             | 23 (8.5)                   | 14 (11.5)                       | 0.098 <sup>a</sup>    |
| <b>Stroke</b>                             | 41 (24.0)                | 157 (17.2)             | 96 (13.7)              | 35 (12.9)                  | 11 (9.0)                        | 0.002                 |
| <b>Dementia</b>                           | 29 (17.0)                | 60 (6.6)               | 25 (3.6)               | 7 (2.6)                    | 4 (3.3)                         | <0.0001 <sup>a</sup>  |
| <b>Clinical and Laboratory (mean, SD)</b> |                          |                        |                        |                            |                                 |                       |
| Mean arterial pressure (mmHg)             | 91.88 ± 21.22            | 97.45 ± 20.80          | 99.73 ± 20.22          | 102.45 ± 20.71             | 101.32 ± 21.53                  | < 0.0001              |
| Heart rate (bpm)                          | 89.70 ± 21.04            | 86.31 ± 20.83          | 84.46 ± 19.55          | 82.57 ± 19.17              | 87.90 ± 21.52                   | 0.001                 |
| Respiratory rate                          | 21.21 ± 4.98             | 20.10 ± 4.43           | 20.23 ± 4.34           | 19.83 ± 4.55               | 20.45 ± 4.21                    | 0.021                 |
| Creatinine(mg/dL)                         | 1.40 ± 2.27              | 1.49 ± 2.28            | 1.52 ± 2.63            | 1.26 ± 1.82                | 1.08 ± 1.10                     | 0.249                 |
| Platelets (x10 <sup>3</sup> )             | 252.5 ± 136.0            | 239.7 ± 113.7          | 227.3 ± 110.3          | 221.1 ± 76.0               | 259.8 ± 149.3                   | 0.001                 |
| Hematocrit                                | 32.34 ± 6.75             | 34.17 ± 7.58           | 35.20 ± 7.38           | 36.75 ± 6.65               | 36.10 ± 5.94                    | < 0.0001              |
| Na (mEq/L)                                | 140.2 ± 8.87             | 138.7 ± 7.68           | 139.7 ± 6.25           | 140.0 ± 6.48               | 139.1 ± 5.40                    | 0.014                 |
| C Reactive Protein (mg/dL)                | 96.77 ± 64.73            | 91.38 ± 70.15          | 79.53 ± 70.15          | 72.48 ± 67.35              | 73.09 ± 68.99                   | < 0.0001              |
| <b>Mortality and Morbidity (n, %)</b>     |                          |                        |                        |                            |                                 |                       |
| <b>ICU deaths</b>                         | 64 (37.4)                | 172 (18.8)             | 76 (10.9)              | 21 (7.7)                   | 10 (8.2)                        | < 0.0001              |

387 ICU = Intensive care unit; Simplified Acute Physiology Score III (SAPS3); Charlson Comorbidity Index (CCI);

388 VAD = Vasoactive drug; MV =Mechanical ventilation.

389 <sup>a</sup>Chi-square test.

390

391

## Supplemental Material

392

393

394 **Content**

395 Table S1

396 Table S2

397 Figure S1

398

399 **Table S1.** Distribution of prognosis scores and mortality by BMI Categories

| Variable  | Underweight<br>(n = 171) | Eutrophic<br>(n = 914) | Overweight<br>(n= 700) | Obese<br>(n = 272) | Advanced<br>obese<br>(n = 122) | p-value  |
|---|--------------------------|------------------------|------------------------|--------------------|--------------------------------|----------|
| <b>ICU deaths</b>                                   | 64 (37.4)                | 172 (18.8)             | 76 (10.9)              | 21 (7.7)           | 10 (8.2)                       | < 0.0001 |
| <b>CCI</b>  | 2.06 ± 1.90              | 1.75 ± 1.84            | 1.55 ± 1.68            | 1.28 ± 1.63        | 1.24 ± 1.50                    | < 0.0001 |
| <b>MFI</b>  | 1.94 ± 1.30              | 1.62 ± 1.30            | 1.68 ± 1.21            | 1.67 ± 1.06        | 1.75 ± 1.08                    | 0.040    |
| <b>SAPS3</b>  | 54.06 ± 11.49            | 48.52 ± 12.68          | 44.63 ± 11.49          | 43.01 ± 11.87      | 44.02 ± 12.39                  | < 0.0001 |
| <b>BRADEN</b>                                       | 13.00 ± 3.48             | 14.61 ± 3.76           | 15.26 ± 3.66           | 14.93 ± 3.70       | 15.34 ± 3.62                   | < 0.0001 |
| <b>Performance status</b>                           |                          |                        |                        |                    |                                | < 0.0001 |
| Completely independent                              | 113 (66.1)               | 778 (85.1)             | 641 (91.6)             | 245 (90.1)         | 109 (89.3)                     |          |
| Partially independent                               | 18 (10.5)                | 65 (7.1)               | 39 (5.6)               | 18 (6.6)           | 8 (6.6)                        |          |
| Fully dependent                                     | 40 (23.4)                | 71 (7.8)               | 20 (2.9)               | 9 (3.3)            | 5 (4.1)                        |          |
| <b>Use of VAD</b>                                   | 21 (12.3)                | 86 (9.4)               | 60 (8.6)               | 27 (9.9)           | 7 (5.7)                        | 0.375    |
| <b>Use of MV</b>                                    | 32 (18.7)                | 157 (17.2)             | 110 (15.7)             | 38 (14.0)          | 10 (8.2)                       | 0.081    |
| <b>C reactive Protein (mg/L)</b>                    | 96.77 ± 64.73            | 91.38 ± 70.15          | 79.53 ± 70.15          | 72.48 ± 67.35      | 73.09 ± 68.99                  | < 0.0001 |
| <b>Length of stay prior to ICU admission (days)</b> | 4.95 ± 16.70             | 2.95 ± 14.58           | 1.65 ± 6.28            | 1.22 ± 4.77        | 1.08 ± 3.47                    | 0.001    |
| <b>ICU length of stay (days)</b>                    | 9.77 ± 12.86             | 9.34 ± 15.85           | 6.84 ± 10.74           | 6.79 ± 12.07       | 5.58 ± 5.51                    | < 0.0001 |
| <b>ICU readmission</b>                              | 20 (11.7)                | 105 (11.5)             | 51 (7.3)               | 14 (5.1)           | 10 (8.2)                       | 0.004    |

400 Results shown by number (%), mean ± standard deviation or median [25-75].

401 ICU = Intensive care unit; Modified Frailty Index (MFI); Simplified Acute Physiology Score III (SAPS3);

402 Charlson Comorbidity Index (CCI); VAD = Vasoactive drug; MV =Mechanical ventilation

403

404 **Table S2.** Univariate analysis of clinical and laboratory exams in the first 6 hours of ICU admission.

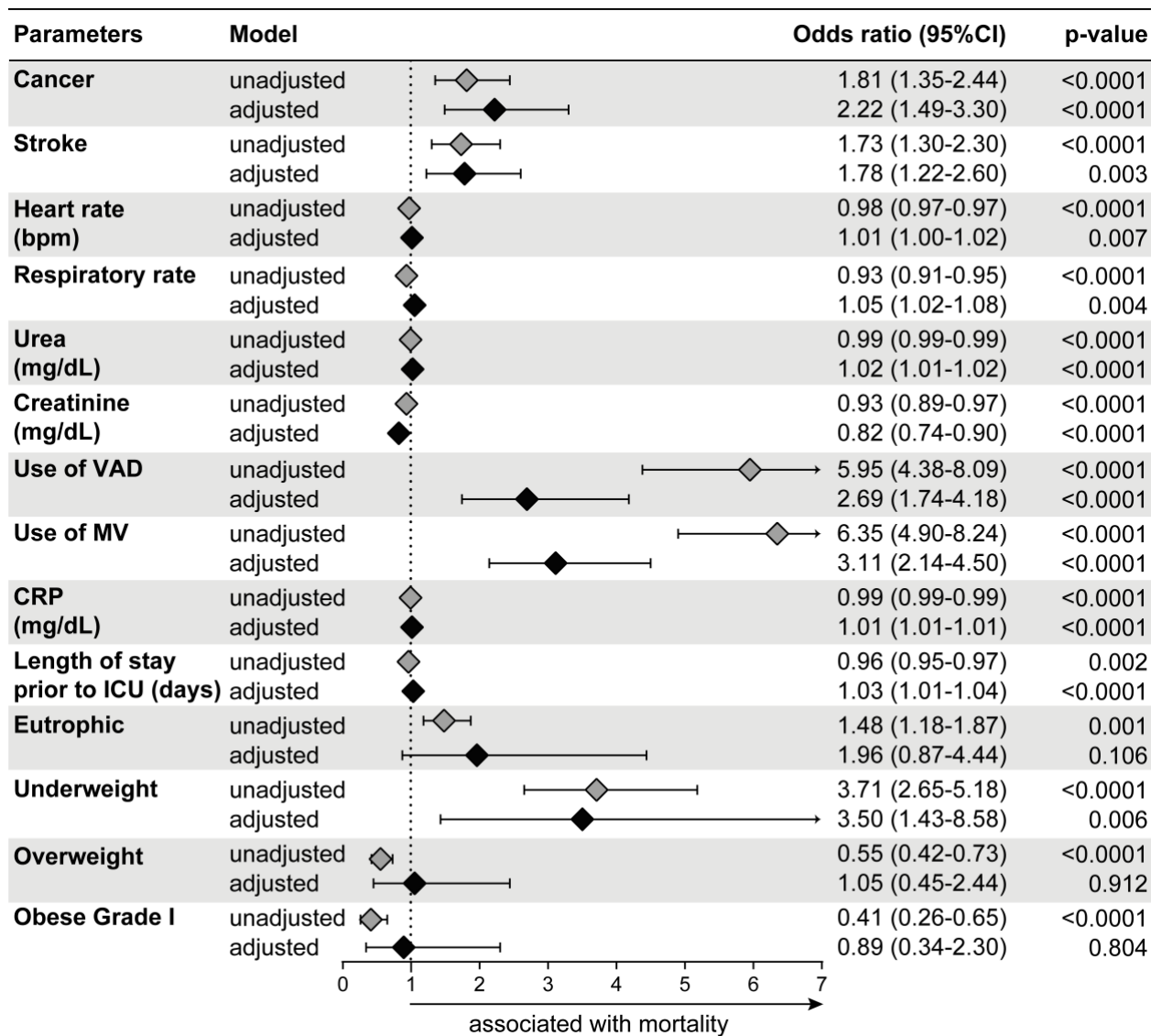
| Variable                                     | Total<br>(n = 2179) | Deaths<br>(n = 343) | Non-Deaths<br>(n = 1836) | p-value  |
|--|---------------------|---------------------|--------------------------|----------|
| Age (years)                                  | 68 ± 18             | 77 ± 15             | 66 ± 18                  | < 0.0001 |
| Gender, female                               | 1158 (53.1)         | 172 (50.1)          | 986 (53.7)               | 0.239    |
| BMI  | 25.6 ± 5.7          | 23.1 ± 5.5          | 26.0 ± 5.6               | < 0.0001 |
| Eutrophic                                    | 914 (41.9)          | 172 (50.1)          | 742 (40.4)               | 0.001    |
| Underweight                                  | 171 (7.8)           | 64 (18.7)           | 107 (5.8)                | < 0.0001 |
| Overweight                                   | 700 (32.1)          | 76 (22.2)           | 624 (34.0)               | < 0.0001 |
| Obese Grade I                                | 272 (12.5)          | 21 (6.1)            | 251 (13.7)               | < 0.0001 |
| Obese Grade II/III                           | 122 (5.6)           | 10 (2.9)            | 112 (6.1)                | 0.015    |
| CHF  | 132 (6.1)           | 16 (4.7)            | 116 (6.3)                | 0.268    |
| CRF  | 251 (11.5)          | 45 (13.1)           | 206 (11.2)               | 0.311    |
| Cirrhosis                                    | 28 (1.3)            | 6 (1.7)             | 22 (1.2)                 | 0.430    |
| Cancer                                       | 302 (13.9)          | 71 (20.7)           | 231 (12.6)               | < 0.0001 |
| Immune deficiency                            | 27 (1.2)            | 7 (2.0)             | 20 (1.1)                 | 0.177    |
| Diabetes                                     | 817 (37.5)          | 132 (38.5)          | 685 (37.3)               | 0.716    |
| Coronary Artery Disease                      | 241 (11.1)          | 31 (9.0)            | 210 (11.4)               | 0.223    |
| Chronic Atrial Fibrillation                  | 137 (6.3)           | 32 (9.3)            | 105 (5.7)                | 0.015    |
| Stroke                                       | 340 (15.6)          | 77 (22.4)           | 263 (14.3)               | < 0.0001 |
| Dementia                                     | 125 (5.7)           | 48 (14.0)           | 77 (4.2)                 | < 0.0001 |
| Tobacco                                      | 164 (7.5)           | 19 (5.5)            | 145 (7.9)                | 0.147    |
| Alcoholism                                   | 119 (5.5)           | 22 (6.4)            | 97 (5.3)                 | 0.436    |
| Psychiatric disease                          | 169 (7.8)           | 23 (6.7)            | 146 (8.0)                | 0.509    |
| Dyslipidemias                                | 201 (9.2)           | 24 (7.0)            | 177 (9.6)                | 0.128    |
| Systolic arterial pressure (mmHg)            | 138 ± 29            | 130 ± 30            | 139 ± 28                 | 0.846    |
| Diastolic Blood Pressure                     | 79 ± 20             | 75 ± 21             | 80 ± 20                  | < 0.0001 |
| Mean Arterial Pressure                       | 99 ± 21             | 93 ± 22             | 100 ± 20                 | < 0.0001 |
| HR (bpm)                                     | 86 ± 20             | 94 ± 22             | 84 ± 20                  | < 0.0001 |
| RR (bpm)                                     | 20 ± 4              | 21 ± 5              | 20 ± 4                   | < 0.0001 |
| Temperature (C)                              | 36 ± 1              | 36 ± 1              | 36 ± 1                   | 0.692    |
| Urea mmol/L                                  | 57 ± 47             | 86 ± 64             | 51 ± 42                  | < 0.0001 |
| Creatinine mg/dL                             | 1.44 ± 2            | 1.86 ± 2            | 1.36 ± 2                 | < 0.0001 |
| Platelets (x10 <sup>3</sup> )                | 235 ± 113           | 230 ± 130           | 236 ± 109                | 0.420    |
| Hematocrit                                   | 34 ± 7              | 32 ± 8              | 35 ± 7                   | < 0.0001 |
| Leukocytes total (x10 <sup>3</sup> )         | 11 ± 11             | 13 ± 7              | 11 ± 11                  | 0.011    |
| Bands  | 176.1 ± 511.6       | 304.6 ± 666.5       | 152.1 ± 473.5            | < 0.0001 |
| Segmented (x10 <sup>3</sup> )                | 9.26 ± 5.74         | 11.05 ± 6.40        | 8.92 ± 5.54              | < 0.0001 |
| Eosinophils                                  | 123.5 ± 246.5       | 112.6 ± 286.0       | 125.5 ± 238.4            | 0.404    |
| Basophils                                    | 18.6 ± 48.7         | 8.58 ± 27.55        | 20.47 ± 51.55            | < 0.0001 |
| Lymphocytes (x10 <sup>3</sup> )              | 1.69 ± 8.84         | 1.27 ± 1.04         | 1.77 ± 9.61              | 0.360    |
| Atypical                                     | 9.78 ± 172.8        | 28.58 ± 390.26      | 6.26 ± 83.38             | 0.034    |
| Monocytes                                    | 562.6 ± 390.2       | 521.38 ± 410.73     | 570.34 ± 385.85          | 0.040    |
| Na (mEq/L)                                   | 139.3 ± 7.11        | 138.86 ± 9.56       | 139.4 ± 6.53             | 0.211    |
| K (mEq/L)                                    | 4.32 ± 0.85         | 4.56 ± 1.07         | 4.28 ± 0.79              | < 0.0001 |
| Use of VAD                                   | 201 (9.2)           | 93 (27.1)           | 108 (5.9)                | < 0.0001 |
| Use of MV                                    | 347 (15.9)          | 149 (43.4)          | 198 (10.8)               | < 0.0001 |
| C-reactive Protein (mg/L)                    | 84.64 ± 69.73       | 136.75 ± 63.45      | 74.37 ± 66.25            | < 0.0001 |
| Length of stay prior to ICU admission (days) | 2.37 ± 11.31        | 4.12 ± 11.20        | 2.05 ± 11.30             | 0.002    |
| ICU Duration (days)                          | 8.04 ± 13.30        | 16.08 ± 24.20       | 6.54 ± 9.31              | < 0.0001 |
| ICU readmission                              | 200 (9.2)           | 49 (2.2)            | 151 (8.2)                | < 0.0001 |

405 Results expressed by number (%), mean ± standard deviation or median [25-75].  
 406 MAP= Mean arterial pressure; HR = heart rate; RR = Respiratory rate.

407

408





409

410

411 **Figure S1.** Adjusted and Unadjusted Multivariate Regression Model for ICU Mortality.

412 Univariate analysis yielded unadjusted odds of death. Multivariate regression adjusted for differences

413 in baseline characteristics (variables of  $p < 0.1$  identified in univariate analysis, Table S2).

414

415

416