

1 **Early transmission dynamics of COVID-19 in a southern hemisphere setting: Lima-Peru:**
2 **February 29th–March 30th, 2020.**

3
4 César V. Munayco^{1#}, Amna Tariq^{2*#}, Richard Rothenberg², Gabriela G Soto-Cabezas¹, Mary F.
5 Reyes¹, Andree Valle¹, Leonardo Rojas-Mezarina³, César Cabezas³, Manuel Loayza¹, Peru
6 COVID-19 working group, Gerardo Chowell²

7
8 # joint first authors

9
10 ¹ Centro Nacional de Epidemiología, Prevención y Control de Enfermedades, Peruvian Ministry
11 of Health, Lima, Peru.

12 ² Department of Population Health Sciences, School of Public Health, Georgia State University,
13 Atlanta, GA, USA

14 ³ Instituto Nacional de Salud, Peruvian Ministry of Health, Lima, Peru.

15

16 Peru COVID-19 working group

Nombre	Area
Dante Castro Garro	Investigación Epidemiológica
Kevin Martel Vasquez	Investigación Epidemiológica
Edith Solis Castro	PREEC
Isabel Sandoval Ordinola	PREEC
Javier Masias Mimbela	PREEC
Kely Meza Cornejo	PREEC
Fabiola Caruajulca Quijano	PREEC
Lenin La Torre Rosillo	PREEC
Luis Ordoñez Ibarguen	PREEC
Mario Vasquez Dominguez	PREEC
Rommell Veintimilla Gonzalez	PREEC
Seminario	
Martha Calderón Silva	PREEC
Mayra Saavedra Dreyfus	PREEC
Miguel Luna Pineda	PREEC
Milagros Durand	PREEC
Noemí Janampa	PREEC
Jesus Chuquihuaccha	PREEC
Susan Mateo Lizarbe	PREEC
David Enriquez Cusi	PREEC
Idania Mamani Pilco	PREEC
Alex Jaramillo	PREEC
Karina Vargas	PREEC
Oswaldo Cabanillas	Alerta-Respuesta
Juan Arrasco	Alerta-Respuesta
María Vargas	Vigilancia en Salud Pública

Willy Ramos	Inteligencia sanitaria
-------------	------------------------

17
18
19
20
21
22
23
24
25
26
27
28
29
30
31
32
33
34
35
36
37
38
39
40
41
42
43
44
45
46
47

* Corresponding author

Amna Tariq
Department of Population Health Sciences
Georgia State University School of Public Health
Atlanta GA, 30303
atariq1@student.gsu.edu
Contact number: 470-985-6352

48 **Abstract**

49 The COVID-19 pandemic that emerged in Wuhan China has generated substantial morbidity and
50 mortality impact around the world during the last four months. The daily trend in reported cases
51 has been rapidly rising in Latin America since March 2020 with the great majority of the cases
52 reported in Brazil followed by Peru as of April 15th, 2020. Although Peru implemented a range of
53 social distancing measures soon after the confirmation of its first case on March 6th, 2020, the daily
54 number of new COVID-19 cases continues to accumulate in this country. We assessed the early
55 COVID-19 transmission dynamics and the effect of social distancing interventions in Lima, Peru.

56
57 We estimated the reproduction number, R , during the early transmission phase in Lima from the
58 daily series of imported and autochthonous cases by the date of symptoms onset as of March 30th,
59 2020. We also assessed the effect of social distancing interventions in Lima by generating short-
60 term forecasts grounded on the early transmission dynamics before interventions were put in place.

61
62 Prior to the implementation of the social distancing measures in Lima, the local incidence curve
63 by the date of symptoms onset displays near exponential growth dynamics with the mean scaling
64 of growth parameter, p , estimated at 0.9 (95%CI: 0.9,1.0) and the reproduction number at 2.3 (95%
65 CI: 2.0, 2.5). Our analysis indicates that school closures and other social distancing interventions
66 have helped slow down the spread of the novel coronavirus, with the nearly exponential growth
67 trend shifting to an approximately linear growth trend soon after the broad scale social distancing
68 interventions were put in place by the government.

69
70 While the interventions appear to have slowed the transmission rate in Lima, the number of new
71 COVID-19 cases continue to accumulate, highlighting the need to strengthen social distancing and
72 active case finding efforts to mitigate disease transmission in the region.

73
74 **Key words**
75 COVID-19; SARS-CoV-2; Transmission potential; Short-term forecast; Reproduction number;
76 Generalized growth model

77
78

79 **1. Introduction**

80 The Coronavirus disease 2019 (COVID-19) pandemic that emerged in the city of Wuhan in China
81 in December 2019 has invaded nearly every nation of the world, becoming the most important
82 public health emergency of the last century after the 1918–1920 influenza pandemic (WHO, 2020).
83 In particular, the novel Severe Acute Respiratory Syndrome Coronavirus 2 (SARS-CoV-2) has an
84 ability to exert substantial severe disease and mortality burden especially affecting individuals
85 older than 60 years and those with prior health conditions including hypertension, cardiovascular
86 disease, obesity and diabetes (Adler, 2020; Team, 2020). As of April 15th, 2020, the trajectory of
87 the pandemic varies significantly around the world ranging from relatively well contained
88 outbreaks in Thailand, Taiwan and Hong Kong to explosive epidemics characterized by initial
89 exponential growth periods in a few hotspots located in various countries around the world
90 including the United States, Italy, Spain, UK, France, and Iran (Ebbs, 2020; Griffiths, 2020;
91 Minder, 2020).

92
93 By April 15th, 2020, SARS-CoV-2 is generating local transmission in over 200 countries and over
94 2.2 million cases and 150 thousand deaths have been reported globally (WHO, 2020). The COVID-
95 19 pandemic was confirmed to have reached Latin America in February 2020 with a gradual
96 expansion in the region until March 2020 when the COVID-19 incidence curve started to grow
97 more rapidly. The US, the country with the highest number of reported COVID-19 cases in the
98 world, has recorded 637,196 COVID-19 cases by April 15th, 2020. In Latin America, Brazil has
99 reported 28320 cases, the highest number of cases in the region followed by Peru with a total of
100 11475 cases (Worldometer, 2020).

101
102 Peru, a country located in western South America, reported its first imported case of COVID-19
103 in Lima, on March 6th, 2020, a Peruvian with recent travel history to France, Spain and Czech
104 Republic (Aquino & Garrison, 2020). By April 15th, 2020, a total of 11475 cases including 254
105 deaths have been reported by the Peruvian government. Lima, the capital of Peru has recorded
106 8412 cases, the highest number of cases within Peru (MOH, 2020). To respond to the growing
107 number of COVID-19 cases in the country, the government shuttered schools on March 11th, 2020.
108 The next day, the government banned gatherings of more than 300 people and suspended all
109 international flights from Europe and Asia. On March 16th, 2020, the government declared a

110 national emergency and closed country borders (Explorer, 2020). Subsequently, on March 17th,
111 2020 the president of Peru announced the beginning of community transmission of SARS-CoV-2
112 in the country, and ordered a curfew in the region on March 18th, 2020 to avoid night time
113 socializing to prevent disease transmission (Explorer, 2020; Writing, 2020).

114

115 In order to combat the spread of the COVID-19 epidemic in Lima, the capital and largest city of
116 Peru, estimates of the transmission potential of COVID-19 can guide the intensity of interventions
117 including the reproduction number, R , during the early transmission phase (Nishiura & Chowell,
118 2009, 2014). Moreover, using the epidemiological data and mathematical modeling, it is possible
119 to gauge the impact of control interventions including school closures and a national emergency
120 declaration in Lima by assessing short-term forecasts grounded on the trajectory of the epidemic
121 prior to the implementation of control interventions (Funk, Camacho, Kucharski, Eggo, &
122 Edmunds, 2018; Shanafelt, Jones, Lima, Perrings, & Chowell, 2018).

123

124 **2. Methods**

125 **2.1. Data**

126 We analyzed the daily number of COVID-19 confirmed cases by date of symptoms onset in Lima,
127 Peru by March 30th, 2020. Individual-level case details including whether the case was locally
128 acquired or imported were also made available from the Centro Nacional de Epidemiología
129 Prevención y control de Enfermedades and the National Institute of Health of the Ministry of
130 Health, Peru (Group, 2020). We also examined the daily testing rate and the positivity rate from
131 the daily number of positive and negative PCR test results by the date of reporting until March
132 30th, 2020.

133

134 **2.2. Early growth model**

135 We generate short-term forecasts in real time using the generalized growth model (GGM) that
136 relies on two parameters and characterizes the early ascending phase of the epidemic allowing to
137 capture a range of epidemic growth profiles including sub-exponential (polynomial) and
138 exponential growth. GGM characterizes epidemic growth by estimating two parameters (i) the
139 intrinsic growth rate, r and (ii) a dimensionless “deacceleration of growth” or “scaling of growth”
140 parameter, p . The latter parameter modulates the epidemic growth patterns including the sub-

141 exponential growth ($p < 1$) and exponential growth dynamics ($p = 1$). The GGM model is given by
142 the following differential equation:

$$143 \quad \frac{dC(t)}{dt} = C'(t) = rC(t)^p$$

144 Where $C'(t)$ describes case incidence over time t . The cumulative number of cases at time t is
145 given by $C(t)$ while r is a positive parameter denoting the growth rate (1/time) and $p \in [0, 1]$ is a
146 “deceleration of growth” parameter (Chowell, 2017; Viboud, Simonsen, & Chowell, 2016).

147

148 **2.3. Short term forecast to assess interventions**

149 We calibrate the GGM model to the daily case incidence by the date of symptoms onset for Lima.
150 We analyzed the time series data of confirmed cases by onset dates for Lima from February 29th,
151 2020 to March 30th, 2020. Our model was calibrated using case series from February 29th–March
152 15th, 2020, prior to the implementation of national emergency in Lima.

153

154 The best fit model solution is estimated by using a non-linear least square fitting approach (full
155 details provided in (Chowell, 2017)). This process searches for the set of model parameters that
156 minimizes the sum of squared differences between the observed data $y_{t_i} = y_{t_1}, y_{t_2}, \dots, y_{t_n}$ and the
157 corresponding model solution given by $f(t_i, \Theta)$: where $\Theta = (r, p)$ correspond to estimated set of
158 parameters of the GGM model. Thus, the objective function for the best fit solution of $f(t_i, \Theta)$ is
159 given by

160

$$161 \quad \hat{\Theta} = \arg \min \sum_{i=1}^n (f(t_i, \Theta) - y_{t_i})^2$$

162

163 The initial condition is fixed to the first observation in the data. Next, we derive uncertainty around
164 the best fit model solution as well as the confidence intervals of the parameters utilizing a
165 parametric bootstrapping approach assuming a Poisson error structure as described in ref (Chowell,
166 2017).

167

168 **2.4. Reproduction number from case incidence using the generalized-growth model**

169 Generally, the reproduction number, R , quantifies the average number of secondary cases per case
170 during the early ascending phase of an outbreak before the implementation of interventions or

171 behavior changes (Anderson & May, 1991; Chowell et al., 2015; Yan & Chowell, 2019). Estimates
172 of the effective R indicate if the disease transmission sustains ($R > 1$) or the disease trend is
173 declining ($R < 1$). Therefore, it is necessary to maintain $R < 1$ to contain an outbreak. Here, we
174 estimate the reproduction number by characterizing the early growth phase (16 day) of local cases
175 using the generalized-growth model (Viboud et al., 2016) and modeling the generation interval of
176 SARS-CoV-2 assuming a gamma distribution with a mean of 4.41 days and a standard deviation
177 of 3.17 days (Nishiura, Linton, & Akhmetzhanov, 2020; You et al., 2020). We simulate the
178 progression of local incident cases by onset dates using the calibrated GGM model and account
179 for the daily series of imported cases into a renewal equation given as (Nishiura & Chowell, 2009,
180 2014; Paine et al., 2010):

$$181 \quad R_{t_i} = \frac{I_i}{\sum_{j=0}^i (I_{i-j} + \alpha J_{i-j}) \rho_i}$$

182 We denote the local incidence at calendar time t_i by I_i , which is characterized using the
183 generalized-growth model, the imported cases at calendar time t_i by J_i , and the discretized
184 probability distribution of the generation interval by ρ_i . In this equation the numerator represents
185 the total new cases I_i , and the denominator represents the total number of cases that contribute to
186 the new cases I_i at time t_i . The relative contribution of imported cases to the secondary disease
187 transmission is represented by the parameter $0 \leq \alpha \leq 1$. We perform a sensitivity analyses by
188 setting $\alpha = 0.15$ and $\alpha = 1.0$ to assess the relative contribution of imported cases to the secondary
189 disease transmission (Nishiura & Roberts, 2010). This is followed by the derivation of the
190 uncertainty bounds around the curve of R directly from the uncertainty associated with the
191 parameter estimates (r , p). We estimate R for 300 simulated curves assuming a Poisson error
192 structure (Chowell, 2017). This method to derive early estimates of the reproduction number, R,
193 has been employed in several prior studies as in refs (Chowell, 2017; Tariq et al., 2020).

194

195 **3. Results**

196 **3.1. COVID-19 testing and positivity rates**

197 Figure 1 shows the daily number of positive and negative laboratory test results and the positivity
198 rate during the reporting period, March 4th–March 30th, 2020. The total number of PCR tests
199 performed for this time period were 11518 (1127 positive results and 10307 negative results). The
200 average daily number of PCR tests performed in Lima was estimated at ~ 188 between March 4th–

201 March 15th, 2020 whereas the number of tests performed between March 16th–March 30th, 2020
202 increased to ~617 tests per day, an increase of 228 % in the testing rates, perhaps reflecting an
203 increase number of suspected cases with respiratory symptoms. The positivity rate (percentage of
204 positive cases among the positive and negative cases) has ranged from 0.6-23.9 % between March
205 4th–March 30th, 2020.

206

207 **3.2. Local and imported incidence trends**

208 The COVID-19 epidemic curve by the date of symptoms onset, stratified by the local and imported
209 incidence case counts is shown in Figure 2. On average ~6 imported cases and ~162 local cases
210 have been reported daily between March 16th–March 30th, 2020 in Lima. A total of 2783
211 autochthonous cases and 151 imported cases have been reported in Lima as of March 30th, 2020.

212

213 **3.3. Reproduction number, R**

214 We estimated the reproduction number from the epidemic's early growth phase comprising the
215 first 16 epidemic days prior to the implementation of social distancing interventions which
216 includes the national emergency declaration on March 16th 2020. The local incidence curve by the
217 date of symptoms onset displays near exponential growth dynamics with the scaling of growth
218 parameter, p , estimated at 0.9 (95% CI: 0.9, 1.0) and the intrinsic growth rate, r , estimated at 0.3
219 (95% CI: 0.3, 0.5). The estimate of the reproduction number was estimated at 2.3 (95% CI: 2.0,
220 2.5) when $\alpha = 0.15$ (Figure 3). When $\alpha = 1.0$, the reproduction number slightly decreases to 2.0
221 (95% CI: 1.7, 2.3) (Table 1).

222

223 **3.4. Assessing the impact of social distancing interventions**

224 In order to assess the impact of social distancing interventions in Lima, including school closures
225 on March 11th, 2020 and the declaration of national emergency on March 16th, 2020, we generate
226 a 20-day ahead forecast for Lima based on the daily incidence curve up until the declaration of the
227 national emergency in Lima. The 16-day calibration period of the model yields an estimated
228 growth rate, r , at 0.8 (95% CI: 0.6, 1.1) and a scaling of growth rate parameter, p , at 0.8 (95%CI:
229 0.7,0.9). The 20-day ahead forecast suggests that the effect of the school closure and the national
230 emergency declaration slowed down the spread of the virus as shown in Figure 4. Indeed, the

231 scaling of growth parameter declined to 0.53 (95% CI: 0.48, 0.58), consistent with an
232 approximately linear incidence growth trend during the period affected by the intervention.

233

234 **4. Discussion**

235 Our estimate of the transmission potential in Lima for the first 16 days of the epidemic indicates
236 sustained local transmission in the region after accounting for multiple case importations with the
237 estimate of reproduction number, R , at ~ 2.3 (95% CI: 2.0, 2.5) which is comparable to estimates
238 of the reproduction number for China, Korea, and Iran that lie in the range of 1.5-7.1 (Hwang,
239 Park, Kim, Jung, & Kim, 2020; Mizumoto, Kagaya, & Chowell, 2020; Muniz-Rodriguez et al.,
240 2020; Read, Bridgen, Cummings, Ho, & Jewell, 2020; Shim, Tariq, Choi, Lee, & Chowell, 2020;
241 Wu, Leung, & Leung, 2020). In contrast, a recent study on Singapore's COVID-19 transmission
242 reported a lower estimate of R at ~ 0.7 , which has been explained as a result of the early
243 implementation of sweeping social distancing interventions (Tariq et al., 2020).

244

245 The initial scaling of growth parameter in Lima indicates a nearly exponential growth pattern,
246 consistent with the early spread of the COVID-19 epidemic in Iran and the exponential growth
247 pattern of COVID-19 displayed by the Chinese province of Hubei (Muniz-Rodriguez et al., 2020;
248 Roosa et al., 2020). In comparison sub-exponential growth patterns of COVID-19 have been
249 observed in Singapore ($p \sim 0.7$), Korea ($p \sim 0.76$) and other Chinese provinces excluding Hubei
250 ($p \sim 0.67$) as described in recent studies (Roosa et al., 2020; Shim et al., 2020; Tariq et al., 2020).

251

252 Although Lima has been quick to take aggressive measures against COVID-19, Peru remains one
253 of the hardest hit countries in Latin America (Tegel, 2020). Despite the closure of country borders
254 on March 16th, 2020, the number of imported cases in Lima has increased with an average of ~ 6
255 imported cases reported between March 16th–March 30th, 2020 compared to an average of ~ 4
256 imported cases per day before March 16th, 2020. However, the 20-day ahead forecast of our GGM
257 model calibrated to first 16 epidemic days suggest that the social distancing measures, including
258 closure of schools and the declaration of national emergency are slowing down the virus spread in
259 Lima. The scaling of growth parameter, p , was estimated at ~ 0.5 (95%CI: 0.5,0.6) after the
260 implementation of social distancing measures, consistent with a linear incidence growth trend.
261 However, the COVID-19 case incidence continues to accumulate despite the quarantine and

262 lockdowns in the region highlighting the need to enhance social distancing measures to further
263 contain the outbreak.

264
265 The average positivity rate of COVID-19 in Lima was ~8.6% between March 4th–March 30th,
266 2020. This positivity rate for Lima, Peru, corresponds to the positivity rates derived from Denmark,
267 Germany and Canada (6-8%) (Meyer & C.Madrigal, 2020). In comparison countries like New
268 Zealand, South Korea and Australia have tested widely and exhibit lower positivity rates (2%)
269 whereas Italy and the US have shown much higher positivity rates (15-20%) for COVID-19
270 indicating suboptimal testing capacity in these countries (Meyer & C.Madrigal, 2020; Project,
271 2020). A recent study has shown that changes in testing rates over the course of the epidemic can
272 mask the epidemic growth rate resulting in biased epidemic trends (Omori, Mizumoto, & Chowell,
273 2020). Moreover, there is a substantial fraction of asymptomatic COVID-19 cases, which could
274 have underestimated the reproduction number derived from the daily incidence’s growth trend of
275 symptomatic cases (Mizumoto, Kagaya, Zarebski, & Chowell, 2020; Wei et al., 2020). Our study
276 underscores the need for active contact tracing efforts that targets symptomatic and asymptomatic
277 cases, rapid isolation of infectious individuals, quarantined contacts and strict social distancing
278 measures to curb the spread of the virus.

279 280 **5. Conclusion**

281 In this study we estimate the early transmission potential of SARS-CoV-2 in Lima, Peru. Our
282 current findings point to sustained transmission of SARS-CoV-2 in the early phase of the outbreak,
283 with our estimate of the mean reproduction number ~2.3. The COVID-19 epidemic in Lima
284 followed an early exponential growth trend, which slowed down and turned into an almost linear
285 growth trend ($p \sim 0.5$), which appears to be tied to broad scale social distancing interventions put in
286 place by the government. While the interventions appear to have slowed the transmission rate, the
287 number of new COVID-19 cases continue to accumulate, highlighting the need to continue social
288 distancing and active case finding efforts to mitigate disease transmission in the region.

289 290 **List of abbreviations**

291 COVID-19
292 SARS-CoV-2

293 PCR

294

295 **Conflict of Interest**

296 The authors declare no conflicts of interest.

297

298 **Funding**

299 G.C. is partially supported from NSF grants 1610429 and 1633381 and R01 GM 130900.

300

301 **Author Contributions**

302 A.T., C.M. and G.C. analyzed the data. A.T. and C.M. retrieved and managed data. A.T and G.C.
303 wrote the first draft of the manuscript. A.T. and G.C worked on subsequent versions of the
304 manuscript. All authors contributed to writing and interpretation of results. All authors read and
305 approved the final manuscript.

306

307 **Ethical approval**

308 Data has been made available and approved for analysis by the Centro Nacional de Epidemiología
309 Prevención y control de Enfermedades (CDC Perú) and the National Institute of Health of the
310 Ministry of Health, Peru.

311

312

313

314

315

316

317

318

319

320

321

322

323

324 References

- 325 Adler, S. E. (2020, February 5). Why Coronaviruses hit older adults hardest. *AARP*. Retrieved
326 from
327 [https://cdn.ymaws.com/www.servicecoordinator.org/resource/resmgr/images/misc_/coro](https://cdn.ymaws.com/www.servicecoordinator.org/resource/resmgr/images/misc_/coronavirus_2020/aarp_why_coronaviruses_hit_o.pdf)
328 [navirus_2020/aarp_why_coronaviruses_hit_o.pdf](https://cdn.ymaws.com/www.servicecoordinator.org/resource/resmgr/images/misc_/coronavirus_2020/aarp_why_coronaviruses_hit_o.pdf)
- 329 Anderson, R. M., & May, R. M. (1991). *Infectious Diseases of Humans*. Oxford Univeristy
330 Press.
- 331 Aquino, M., & Garrison, C. (2020, March 6). Peru records first confirmed case of coronavirus,
332 President Vizcarra says. *Rueters*. Retrieved from [https://www.reuters.com/article/us-](https://www.reuters.com/article/us-health-coronavirus-peru/peru-records-first-confirmed-case-of-coronavirus-president-vizcarra-says-idUSKBN20T1S9)
333 [health-coronavirus-peru/peru-records-first-confirmed-case-of-coronavirus-president-](https://www.reuters.com/article/us-health-coronavirus-peru/peru-records-first-confirmed-case-of-coronavirus-president-vizcarra-says-idUSKBN20T1S9)
334 [vizcarra-says-idUSKBN20T1S9](https://www.reuters.com/article/us-health-coronavirus-peru/peru-records-first-confirmed-case-of-coronavirus-president-vizcarra-says-idUSKBN20T1S9)
- 335 Chowell, G. (2017). Fitting dynamic models to epidemic outbreaks with quantified uncertainty:
336 A primer for parameter uncertainty, identifiability, and forecasts. *Infectious Disease*
337 *Modelling*, 2(3), 379-398. doi:<https://doi.org/10.1016/j.idm.2017.08.001>
- 338 Chowell, G., Abdirizak, F., Lee, S., Lee, J., Jung, E., Nishiura, H., & Viboud, C. (2015).
339 Transmission characteristics of MERS and SARS in the healthcare setting: a comparative
340 study. *BMC Medicine*, 13(1), 210. doi:10.1186/s12916-015-0450-0
- 341 Ebbs, W. (2020, March 20). U.S. Coronavirus Cases Explode. How Long Before the Hospital
342 System Collapses? *CCN*. Retrieved from [https://www.ccn.com/us-coronavirus-cases-](https://www.ccn.com/us-coronavirus-cases-soar-past-11000/)
343 [soar-past-11000/](https://www.ccn.com/us-coronavirus-cases-soar-past-11000/)
- 344 Explorer, A. (2020, April 6). Coronavirus in Peru- the latest updates. Retrieved from
345 [https://amazonas-explorer.com/is-there-coronavirus-in-](https://amazonas-explorer.com/is-there-coronavirus-in-peru/#Timeline_of_coronavirus_cases_in_Peru)
346 [peru/#Timeline_of_coronavirus_cases_in_Peru](https://amazonas-explorer.com/is-there-coronavirus-in-peru/#Timeline_of_coronavirus_cases_in_Peru)
- 347 Funk, S., Camacho, A., Kucharski, A. J., Eggo, R. M., & Edmunds, W. J. (2018). Real-time
348 forecasting of infectious disease dynamics with a stochastic semi-mechanistic model.
349 *Epidemics*, 22, 56-61. doi:10.1016/j.epidem.2016.11.003
- 350 Griffiths, J. (2020, April 5). Taiwan's coronavirus response is among the best globally. *CNN*.
351 Retrieved from [https://www.cnn.com/2020/04/04/asia/taiwan-coronavirus-response-who-](https://www.cnn.com/2020/04/04/asia/taiwan-coronavirus-response-who-intl-hnk/index.html)
352 [intl-hnk/index.html](https://www.cnn.com/2020/04/04/asia/taiwan-coronavirus-response-who-intl-hnk/index.html)
- 353 Group, C.-W. (2020). *Data set for Lima*.
- 354 Hwang, J., Park, H., Kim, S.-H., Jung, J., & Kim, N. (2020). Basic and effective reproduction
355 numbers of COVID-19 cases in South Korea excluding Sincheonji cases. *medRxiv*,
356 2020.2003.2019.20039347. doi:10.1101/2020.03.19.20039347
- 357 Meyer, R., & C.Madrigal, A. (2020, April 16). A New Statistic Reveals Why America's COVID-
358 19 Numbers Are Flat. *The Atlantic*. Retrieved from
359 [https://www.theatlantic.com/technology/archive/2020/04/us-coronavirus-outbreak-out-](https://www.theatlantic.com/technology/archive/2020/04/us-coronavirus-outbreak-out-control-test-positivity-rate/610132/)
360 [control-test-positivity-rate/610132/](https://www.theatlantic.com/technology/archive/2020/04/us-coronavirus-outbreak-out-control-test-positivity-rate/610132/)
- 361 Minder, R. (2020, April 7). Spain's Coronavirus Crisis Accelerated as Warnings Went
362 Unheeded. *The New York Times*. Retrieved from
363 <https://www.nytimes.com/2020/04/07/world/europe/spain-coronavirus.html>
- 364 Mizumoto, K., Kagaya, K., & Chowell, G. (2020). Early epidemiological assessment of the
365 transmission potential and virulence of coronavirus disease 2019 (COVID-19) in Wuhan
366 City: China, January-February, 2020. *medRxiv*, 2020.2002.2012.20022434.
367 doi:10.1101/2020.02.12.20022434
- 368 Mizumoto, K., Kagaya, K., Zarebski, A., & Chowell, G. (2020). Estimating the asymptomatic
369 proportion of coronavirus disease 2019 (COVID-19) cases on board the Diamond

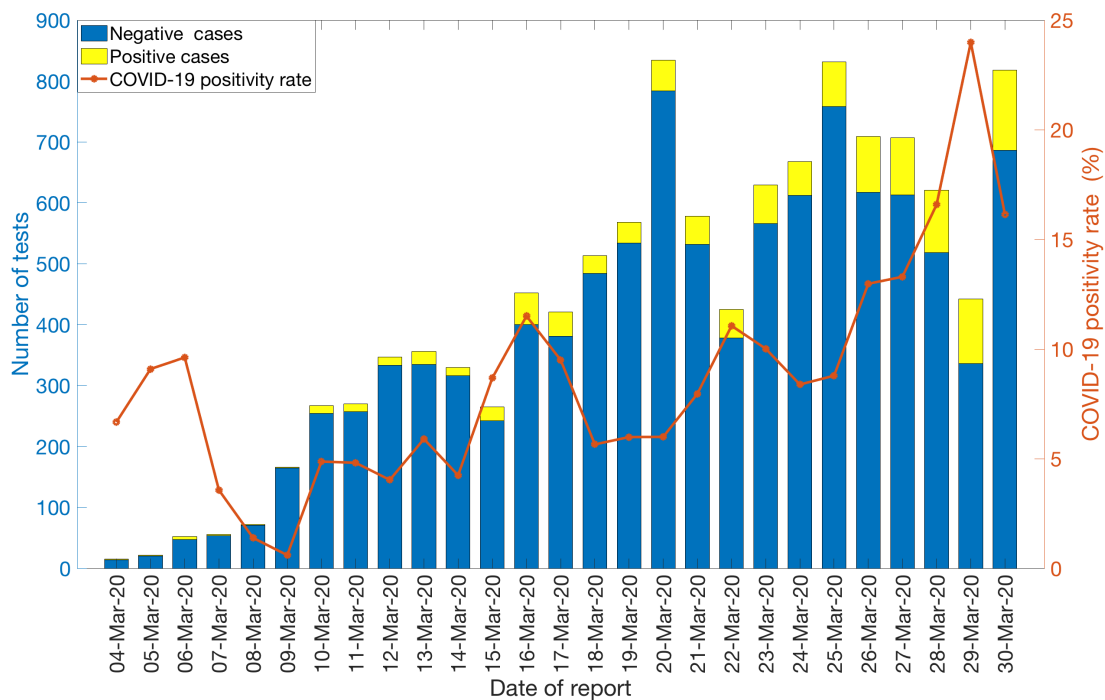
- 370 Princess cruise ship, Yokohama, Japan, 2020. *Euro Surveill*, 25(10), 2000180.
371 doi:10.2807/1560-7917.ES.2020.25.10.2000180
- 372 MOH. (2020). Sala Situacional COVID-19 Peru. Retrieved from
373 https://covid19.minsa.gob.pe/sala_situacional.asp
- 374 Muniz-Rodriguez, K., Fung, I. C.-H., Ferdosi, S. R., Ofori, S. K., Lee, Y., Tariq, A., & Chowell,
375 G. (2020). Transmission potential of COVID-19 in Iran. *medRxiv*,
376 2020.2003.2008.20030643. doi:10.1101/2020.03.08.20030643
- 377 Nishiura, H., & Chowell, G. (2009). *The Effective Reproduction Number as a Prelude to*
378 *Statistical Estimation of Time-Dependent Epidemic Trends*.
- 379 Nishiura, H., & Chowell, G. (2014). Early transmission dynamics of Ebola virus disease (EVD),
380 West Africa, March to August 2014. *Euro Surveill*, 19(36).
- 381 Nishiura, H., Linton, N. M., & Akhmetzhanov, A. R. (2020). Serial interval of novel coronavirus
382 (2019-nCoV) infections. *medRxiv*, 2020.2002.2003.20019497.
383 doi:10.1101/2020.02.03.20019497
- 384 Nishiura, H., & Roberts, M. G. (2010). Estimation of the reproduction number for 2009
385 pandemic influenza A(H1N1) in the presence of imported cases. *Eurosurveillance*,
386 15(29), 19622. doi:10.2807/ese.15.29.19622-en
- 387 Omori, R., Mizumoto, K., & Chowell, G. (2020). Changes in testing rates could mask the novel
388 coronavirus disease (COVID-19) growth rate. *International Journal of Infectious*
389 *Diseases*, 94, 116-118. doi:10.1016/j.ijid.2020.04.021
- 390 Paine, S., Mercer, G., Kelly, P., Bandaranayake, D., Baker, M., Huang, Q., . . . Hope, V. (2010).
391 Transmissibility of 2009 pandemic influenza A(H1N1) in New Zealand: effective
392 reproduction number and influence of age, ethnicity and importations. *Euro Surveill*,
393 15(24).
- 394 Project, C. T. (2020). The COVID-19 tracking project. Retrieved from
395 <https://covidtracking.com/about-project>
- 396 Read, J. M., Bridgen, J. R., Cummings, D. A., Ho, A., & Jewell, C. P. (2020). Novel coronavirus
397 2019-nCoV: early estimation of epidemiological parameters and epidemic predictions.
398 *medRxiv*, 2020.2001.2023.20018549. doi:10.1101/2020.01.23.20018549
- 399 Roosa, K., Lee, Y., Luo, R., Kirpich, A., Rothenberg, R., Hyman, J. M., . . . Chowell, G. (2020).
400 Real-time forecasts of the COVID-19 epidemic in China from February 5th to February
401 24th, 2020. *Infectious Disease Modelling*, 5, 256-263.
402 doi:10.1016/j.idm.2020.02.002
- 403 Shanafelt, D. W., Jones, G., Lima, M., Perrings, C., & Chowell, G. (2018). Forecasting the 2001
404 Foot-and-Mouth Disease Epidemic in the UK. *EcoHealth*, 15(2), 338-347.
405 doi:10.1007/s10393-017-1293-2
- 406 Shim, E., Tariq, A., Choi, W., Lee, Y., & Chowell, G. (2020). Transmission potential and
407 severity of COVID-19 in South Korea. *International Journal of Infectious Diseases*, 93,
408 339-344. doi:10.1016/j.ijid.2020.03.031
- 409 Tariq, A., Lee, Y., Roosa, K., Blumberg, S., Yan, P., Ma, S., & Chowell, G. (2020). Real-time
410 monitoring the transmission potential of COVID-19 in Singapore, March 2020. *medRxiv*,
411 2020.2002.2021.20026435. doi:10.1101/2020.02.21.20026435
- 412 Team, C. C.-R. (2020). *Preliminary Estimates of the Prevalence of Selected Underlying Health*
413 *Conditions Among Patients with Coronavirus Disease 2019 — United States, February*
414 *12–March 28, 2020*. Retrieved from MMWR Morb Mortal Wkly Rep 2020:

415 https://www.cdc.gov/mmwr/volumes/69/wr/mm6913e2.htm?s_cid=mm6913e2_w#sugge
416 [stedcitation](https://www.cdc.gov/mmwr/volumes/69/wr/mm6913e2.htm?s_cid=mm6913e2_w#sugge)
417 Tegel, S. (2020, April 17). Peru took early, aggressive measures against the coronavirus. It's still
418 suffering one of Latin America's largest outbreaks. *The Washington Post*. Retrieved from
419 [https://www.washingtonpost.com/world/the_americas/peru-took-early-aggressive-](https://www.washingtonpost.com/world/the_americas/peru-took-early-aggressive-measures-against-the-coronavirus-its-still-suffering-one-of-latin-americas-largest-outbreaks/2020/04/16/1cd783bc-8005-11ea-84c2-0792d8591911_story.html)
420 [measures-against-the-coronavirus-its-still-suffering-one-of-latin-americas-largest-](https://www.washingtonpost.com/world/the_americas/peru-took-early-aggressive-measures-against-the-coronavirus-its-still-suffering-one-of-latin-americas-largest-outbreaks/2020/04/16/1cd783bc-8005-11ea-84c2-0792d8591911_story.html)
421 [outbreaks/2020/04/16/1cd783bc-8005-11ea-84c2-0792d8591911_story.html](https://www.washingtonpost.com/world/the_americas/peru-took-early-aggressive-measures-against-the-coronavirus-its-still-suffering-one-of-latin-americas-largest-outbreaks/2020/04/16/1cd783bc-8005-11ea-84c2-0792d8591911_story.html)
422 Viboud, C., Simonsen, L., & Chowell, G. (2016). A generalized-growth model to characterize
423 the early ascending phase of infectious disease outbreaks. *Epidemics*, 15, 27-37.
424 doi:<https://doi.org/10.1016/j.epidem.2016.01.002>
425 Wei, W. E., Li, Z., Chiew, C. J., Yong, S. E., Toh, M. P., & Lee, V. J. (2020). *Presymptomatic*
426 *Transmission of SARS-CoV-2 — Singapore, January 23–March 16, 2020*. Retrieved from
427 https://www.cdc.gov/mmwr/volumes/69/wr/mm6914e1.htm?s_cid=mm6914e1_w
428 WHO. (2020). Situation Reports Coronavirus. Retrieved from
429 <https://www.who.int/emergencies/diseases/novel-coronavirus-2019/situation-reports>
430 Worldometer. (2020). COVID-19 coronavirus / cases. Retrieved from
431 <https://www.worldometers.info/coronavirus/coronavirus-cases/>
432 Writing, M. (2020, March 15). Coronavirus in Peru: Government announces mandatory
433 quarantine for 15 days for coronavirus. *Gestion*. Retrieved from
434 [https://gestion.pe/peru/politica/coronavirus-en-peru-gobierno-anuncia-cuarentena-](https://gestion.pe/peru/politica/coronavirus-en-peru-gobierno-anuncia-cuarentena-obligatorio-por-15-dias-por-coronavirus-noticia/)
435 [obligatorio-por-15-dias-por-coronavirus-noticia/](https://gestion.pe/peru/politica/coronavirus-en-peru-gobierno-anuncia-cuarentena-obligatorio-por-15-dias-por-coronavirus-noticia/)
436 Wu, J. T., Leung, K., & Leung, G. M. (2020). Nowcasting and forecasting the potential domestic
437 and international spread of the 2019-nCoV outbreak originating in Wuhan, China: a
438 modelling study. *The Lancet*. doi:10.1016/S0140-6736(20)30260-9
439 Yan, P., & Chowell, G. (2019). *Quantitative methods for infectious disease outbreak*
440 *investigations*. Springer.
441 You, C., Deng, Y., Hu, W., Sun, J., Lin, Q., Zhou, F., . . . Zhou, X.-H. (2020). Estimation of the
442 Time-Varying Reproduction Number of COVID-19 Outbreak in China. *medRxiv*,
443 2020.2002.2008.20021253. doi:10.1101/2020.02.08.20021253
444
445
446
447
448
449
450
451
452
453

Parameter	Estimated values at $\alpha = 1.0$	Estimated values at $\alpha = 0.15$
Reproduction number	2.0 (95% CI: 1.7,2.3)	2.3 (95%CI: 2.0,2.5)
Growth rate, r	0.3 (95%CI: 0.3,0.5)	
Scaling of growth parameter, p	0.9 (95%CI: 0.9,1.0)	

454
455 Table 1: Mean estimates and the corresponding 95% confidence intervals for the reproduction
456 number in Lima, growth rate and the scaling of growth parameter during the early growth phase
457 as of March 15th, 2020

458
459
460
461
462
463
464
465
466
467
468
469
470
471
472
473
474
475
476
477
478



479

480 Figure 1: Laboratory results of COVID-19 tests in Lima as of March 30th, 2020. Blue color
481 represents the negative test results and the yellow color represents the positive test results. The
482 orange solid line denotes the COVID-19 positivity rate in Lima.

483

484

485

486

487

488

489

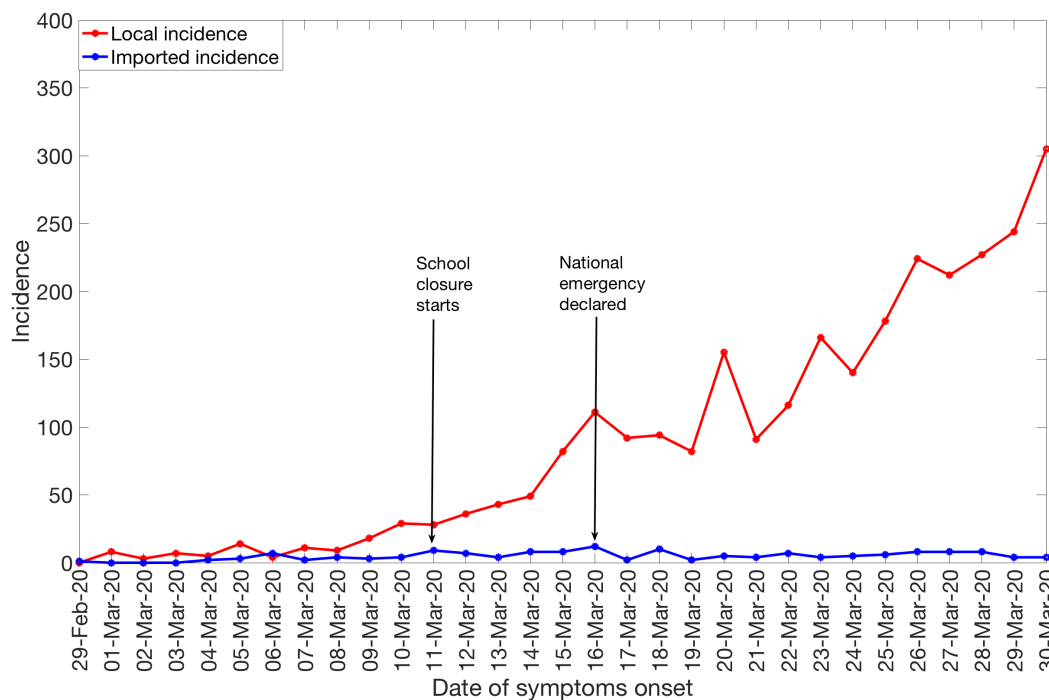
490

491

492

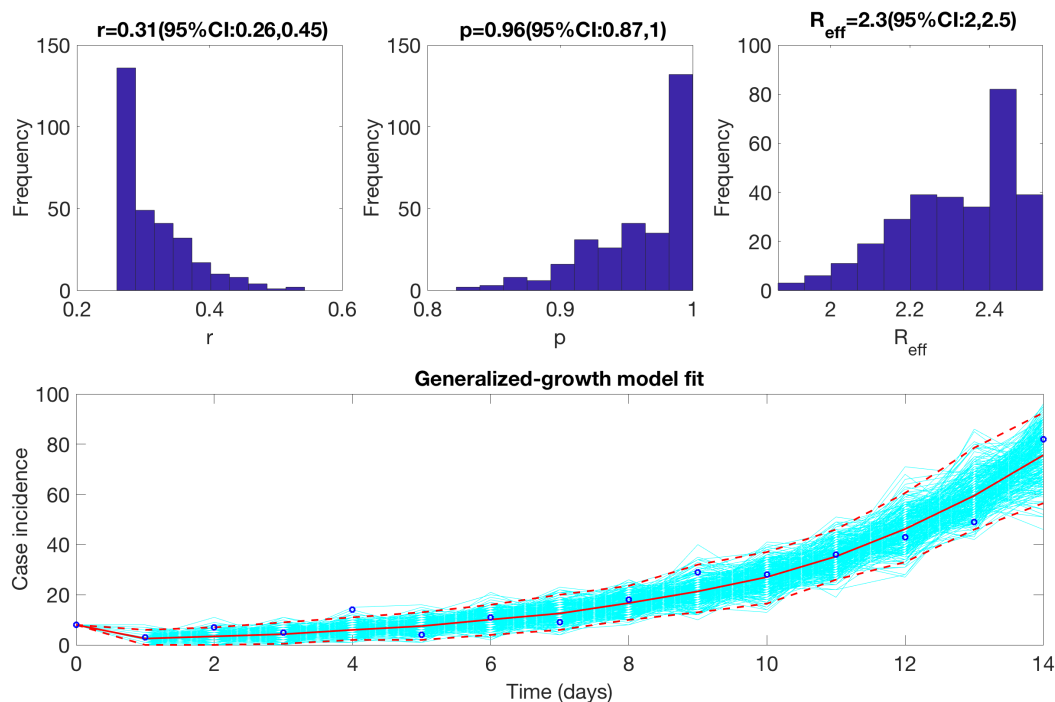
493

494



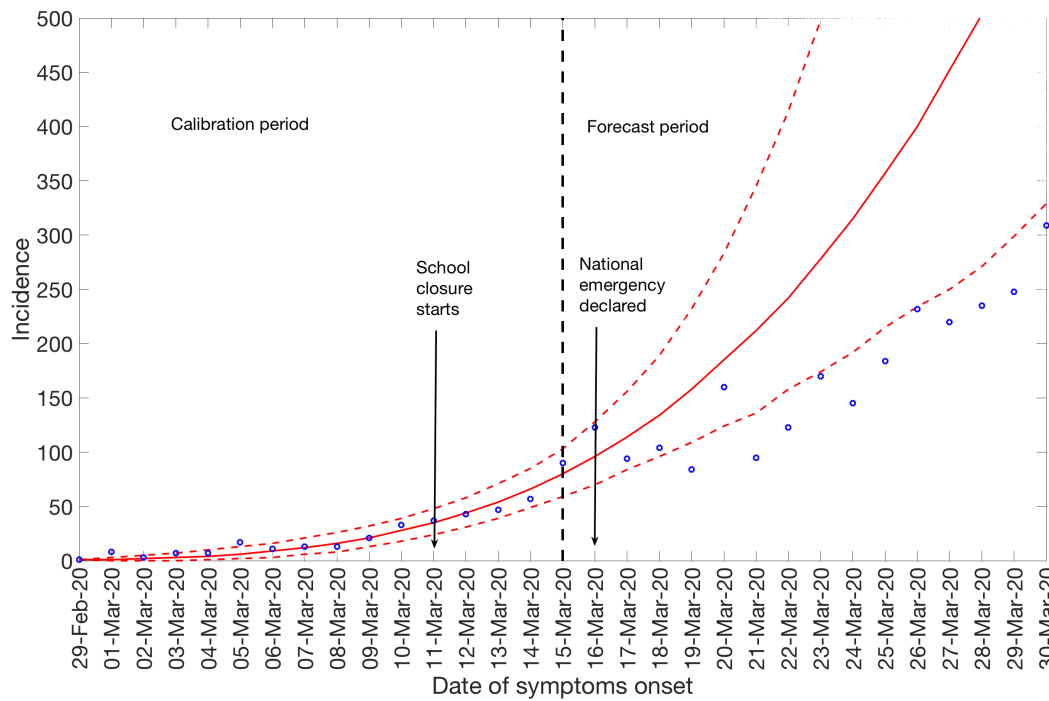
495
496 Figure 2: Daily numbers of new local and imported confirmed COVID-19 cases in Lima by date
497 of symptoms onset as of March 30th, 2020.

498
499
500
501
502
503
504
505
506
507
508
509
510



511
512 Figure 3 : The reproduction number derived from the early growth phase in the number of COVID-
513 19 cases in Lima after adjusting for imported cases with $\alpha = 0.15$ using the GGM model as
514 described in the text. The reproduction number based on the incidence curve by March 15th, 2020
515 was estimated at 2.3 (95% CI: 2.0, 2.5).

516
517
518
519
520
521
522
523
524
525
526
527
528



529

530

531 Figure 4: 20-day ahead forecast of the COVID-19 epidemic in Lima by calibrating the GGM model
532 until March 15th, 2020 (vertical dashed line). Blue circles correspond to the data points, the red
533 solid line indicates the model's mean fit and the red dashed lines represent the 95% prediction
534 interval. The vertical black dashed line represents the time of the start of the forecast period. The
535 forecast (March 16th- March 30th) suggests that social distancing interventions have slowed down
536 the transmission rate.

537