

# 1 Does weather affect the growth rate of COVID-19, a study to comprehend 2 transmission dynamics on human health

## 3 Authors:

4 Arjun Sil<sup>1</sup> and Vanapalli Naveen Kumar<sup>1</sup>

5 <sup>1</sup>Dept of Civil Engineering, NIT Silchar, Assam, India, 788010

6 Email: [silarjun@gmail.com](mailto:silarjun@gmail.com)

## 8 Abstract

9 The undefendable outbreak of novel coronavirus (SARS-COV-2) lead to a global health  
10 emergency due to its higher transmission rate and longer symptomatic duration, created a  
11 health surge in a short time. Since Nov 2019 the outbreak in China, the virus is spreading  
12 exponentially everywhere. The current study focuses on the relationship between  
13 environmental parameters and the growth rate of COVID-19. The statistical analysis suggests  
14 that the temperature changes retarded the growth rate and found that  $-6.28^{\circ}\text{C}$  and  $+14.51^{\circ}\text{C}$   
15 temperature is the favorable range for COVID-19 growth. Gutenberg- Richter's relationship  
16 is used to estimate the mean daily rate of exceedance of confirmed cases concerning the  
17 change in temperature. Temperature is the most influential parameter that reduces the growth  
18 at the rate of 13-16 cases/day with a  $1^{\circ}\text{C}$  rise in temperature.

19 Keywords: Covid-19, pandemic, temperature, health risk

## 20 Introduction

21 Several virus-infected diseases occur seasonally on a regular basis affecting human health  
22 every year. A virus invades the human body by hijacking the internal cell machinery to  
23 introduce its own genetic material in order to reproduce more virus particles in the host.  
24 Since ancient times, numerous deaths including both humans and animals occurred due to  
25 several seasonal virus/bacterial infections to which people used to give their effort for  
26 survival by minimizing this infection through inventing various vaccines or medicines.

NOTE: This preprint reports new research that has not been certified by peer review and should not be used to guide clinical practice.

27 However, so far already the deadly Covid-19 virus originated diseases created pandemic that  
28 has affected a more significant part of the world population.

29 Currently, the whole world is struggling to sustain the menacing health emergency due to the  
30 outbreak of novel coronavirus Sars-Cov-2, causing COVID-19. Sars-Cov-2 is the 7th human  
31 pathogen recognized in the coronavirus family (M. Ceccarelli and M. Berretta, 2020) and is  
32 also similar to the Sars-Cov in 2002, Sars-Cov affected people globally with around 10%  
33 mortality, whereas MERS in 2012 caused 34% death among the infected people. It is reported  
34 (Li et al. 2020) that SARS-Cov-2 has a reproductive number ( $R_0$ ) of 2.2 indicating that a  
35 patient on average spreads the virus to 2.2 people around him. The study also suggests that  
36 the average incubation period is around 5.2 days, with influenza doubled in size for every 7.4  
37 days as the host transmits to close contacts before exhibiting symptoms (within 14 days),  
38 leading to an exponential chain transmission. The Covid-19 mortality rate as on 31<sup>st</sup> March  
39 2020 is found to be about 4.97%. However, the mortality rate of Covid-19 is less compared to  
40 the other two infectious diseases, nevertheless, the crucial fact is that it is infecting or  
41 transmitting exponentially from human to human creating a health surge in a short lapse of  
42 time. However, the challenge is to maintain  $R_0 < 1$  so that the spreading capability of Covid-19  
43 is reduced and it could be attained through mitigation strategies such as managing social  
44 distance, using a mask and maintaining personal hygiene.

45 The recent study observes that the mortality rate of Covid-19 is higher for males than females  
46 i.e., 2.8% and 1.7% respectively. Further, On the other hand, considering the global scenario,  
47 the fatality rate of old people (>60 years of age) become profoundly affected with a mortality  
48 rate of 26.4%, whereas the people with age ranging between 10-59 years is 2.3 % and no  
49 death below 10 years is reported so far. However, around 56% of the global population (2019  
50 census) live in urban areas and are highly vulnerable to the virus as WHO declared it, as a  
51 droplet oriented transmission, and it is difficult to contain the spread as maintaining social

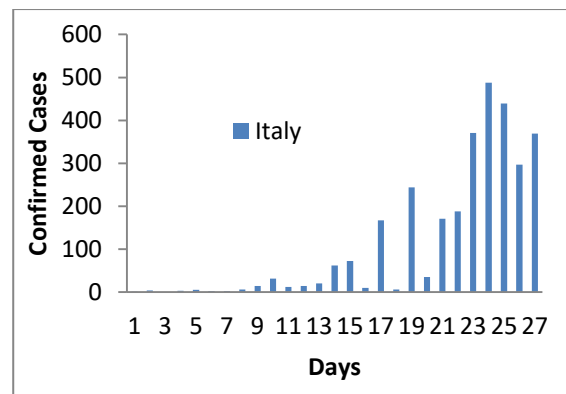
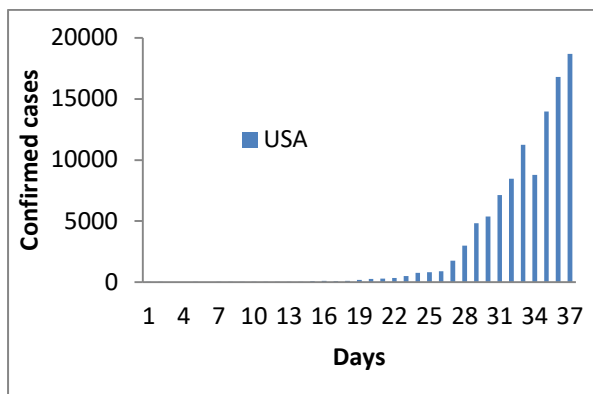
52 distancing is difficult in urban areas. The global location-wise data show exponential growth  
 53 in infections as in figure 1. Indeed, the severely infected top 20 countries are presented in  
 54 table1.

55 **Table 1:** Top 20 countries severely affected are presented according to the order of infection  
 56 cases

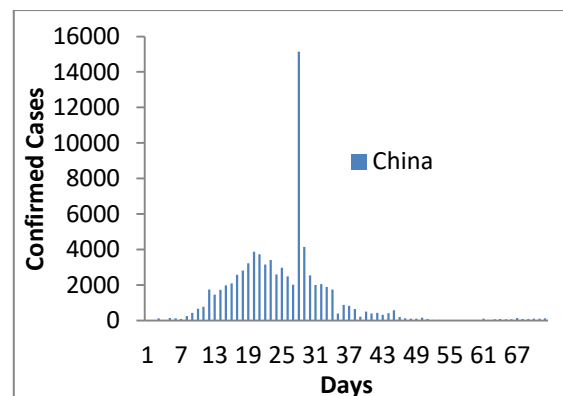
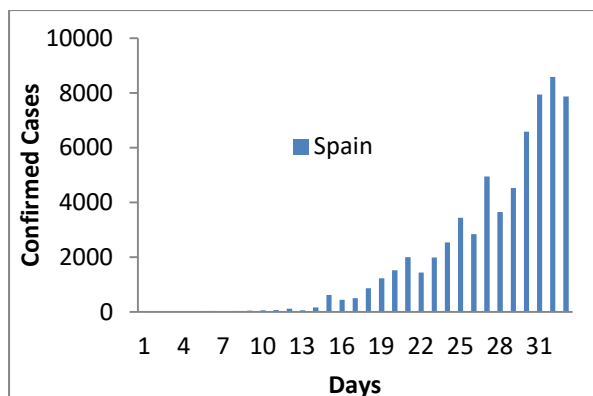
Country	Confirmed Cases	Deaths	Cases as % of Global	Mortality Rate
USA	104837	1704	17.64	1.63
Italy	86498	9134	14.55	10.56
Mainland				
China	81394	3295	13.69	4.05
Spain	65719	5138	11.06	7.82
Germany	53340	395	8.97	0.74
Iran	32332	2378	5.44	7.35
France	29566	1696	4.97	5.74
UK	14543	759	2.45	5.22
Switzerland	12928	231	2.17	1.79
South Korea	9478	144	1.59	1.52
Netherlands	8603	546	1.45	6.35
Austria	7712	58	1.3	0.75
Belgium	7284	289	1.23	3.97
Turkey	5698	92	0.96	1.61
Canada	4757	55	0.8	1.16
Portugal	4268	76	0.72	1.78
Norway	3773	19	0.63	0.5
Australia	3635	14	0.61	0.39
Brazil	3477	93	0.58	2.67
Israel	3460	12	0.58	0.35
Sweden	3046	92	0.51	3.02
Malaysia	2161	26	0.36	1.2
Denmark	2154	41	0.36	1.9
Czech				
Republic	2062	9	0.35	0.44
Ireland	1819	19	0.31	1.04

57

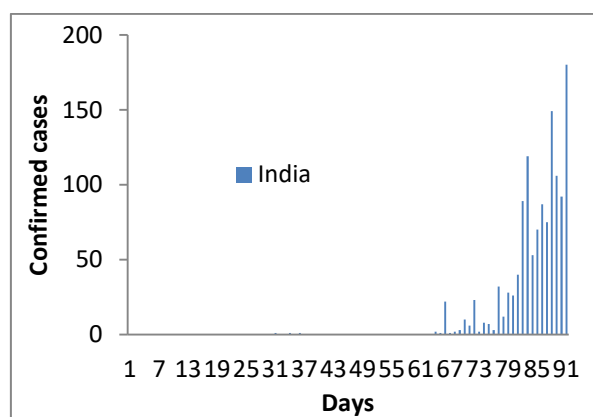
58



59



60



61 **Figure 1:** Frequency diagram of daily infected confirmed cases reported for top 4 countries  
 62 including India a) USA, b) Italy, c) Spain, d) China & e) India

63 The Covid-19 outbreak came into the spotlight at the end of December 2019 in the Wuhan  
 64 city of China and within no time turned into pandemic through spreading over to most of the  
 65 countries. However, globally till 31 March 2020, the WHO reported a total of 903540  
 66 confirmed infected cases and 47241 deaths (mortality rate 5.2%). In reality, the actual  
 67 infected numbers may go much higher due to non reporting facts during the initial cases, or it  
 68 is being detected slightly in later days. Further, these cases might go much higher within a

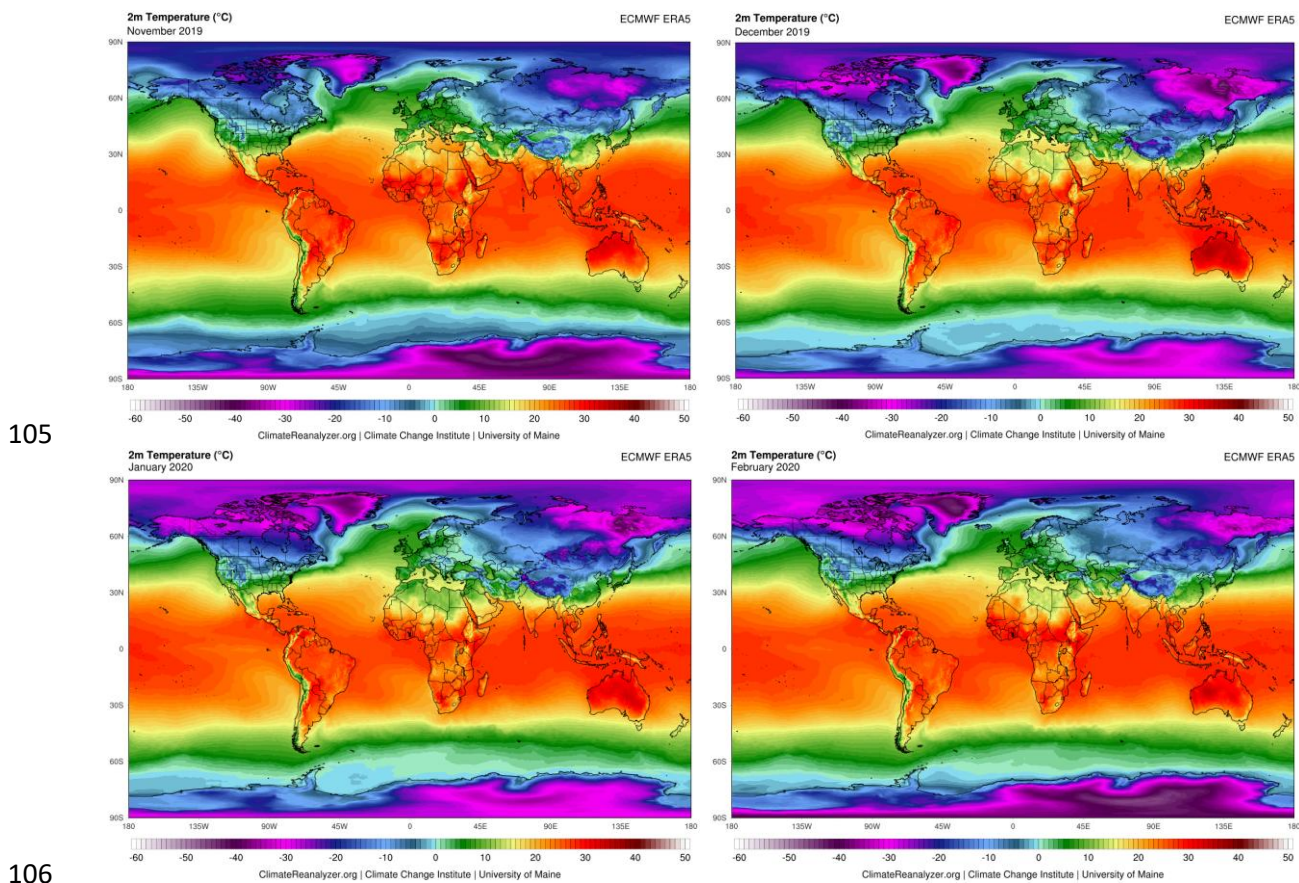
69 short span. However, an appealing fact is that the number of reported cases are varying  
70 region to region or country to country with respective to their population. India is the 2<sup>nd</sup>  
71 largest population in the world with 1370 million as per 2019 census data, however, the total  
72 reported cases and deaths till March 2020 are 2113 and 60 respectively, whereas in USA,  
73 Italy, China and Spain, the total infected cases are 104837 (17.64%), 86498 (14.55%),  
74 81394(13.69%), and 65719 (11.06%) respectively (Table1). Further, the death rate (10.56%)  
75 in Italy becomes higher compared to the USA (1.53%), China (4.05%) and India (2.8%).

## 76 **Environmental conditions**

77 A study (Lin et al. 2006) states that Sars-Cov loses its stability and couldn't facilitate higher  
78 transmission in tropical areas at a higher temperature and relative humidity. This evidentially  
79 emblazes an indication that like its predecessor, Sars-Cov 2 incidence may also be less at a  
80 higher temperature and humidity. However, a recent study (Araújo and Naimi, n.d.) that  
81 climatic conditions constrain the spread of the Sars-Cov-2. It is reported that the cold  
82 climates are more favorable for the spread of the virus rather than arid and tropical climates.  
83 Another study (Sajadi et al., n.d.) supports this discussion stating that the virus spread is more  
84 and have similar cluster patterns in the colder regions within 30-50°N having average  
85 temperatures between 5-11°C associated with low absolute humidity (4-7 g/m<sup>3</sup>). Further,  
86 another study (Wang et al. 2020) reports that a rise in 1°C temperatures leads to a 0.86  
87 decrease in cumulative cases. However, another study (Gupta, n.d.) observed that a 1°C  
88 increase in temperature above 5°C reduces the transmission by 10%. These reported studies  
89 provide substantial evidence that the climatic conditions can regulate the transmission of the  
90 rapidly spreading novel coronavirus Sars-Cov-2.

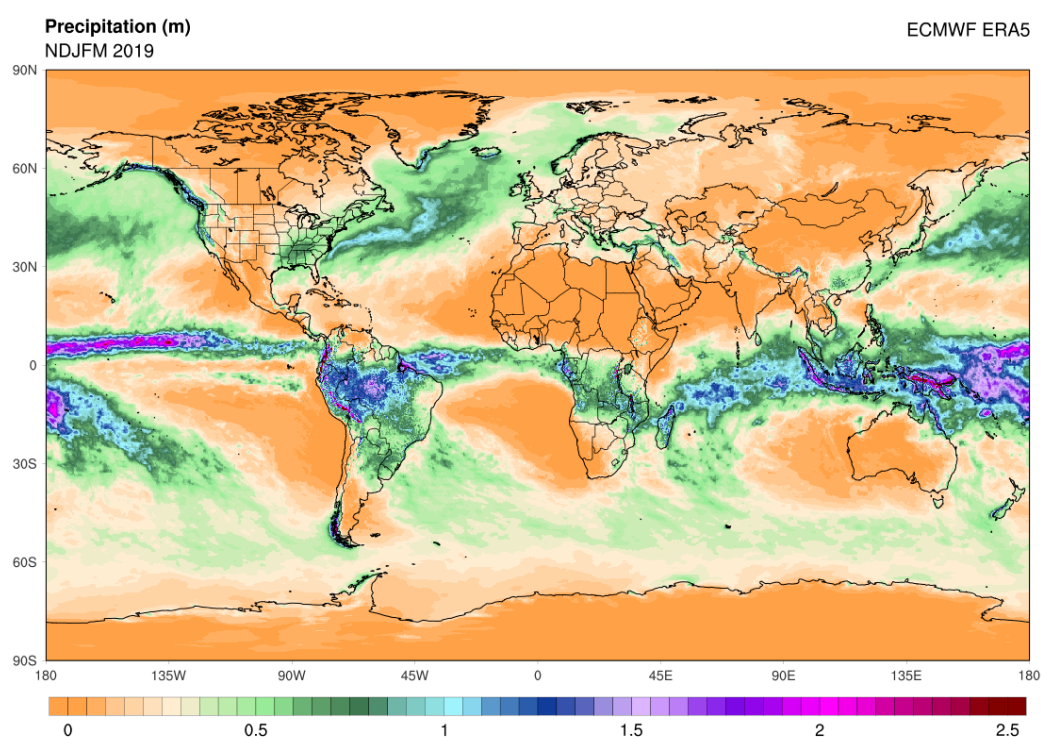
91 Indeed, out of various environmental factors such as humidity, cloud cover, wind speed and  
92 precipitation, temperature contributes significantly to the decrease in the growth rate of  
93 infection. However, to study the effect of temperature, initially, a set of global temperature

94 data has been collected for the past four months since November 2019 (source: University of  
95 Mine) as shown in Figure 2. It has been observed that all the highly affected countries USA,  
96 Italy, Spain, and China are lying in between latitude 30-50°N from the equator and also the  
97 temperature gradient is below 15°C for the considered period. However, the temperature is  
98 high (> 15°C) in the regions lying between latitude +40°N to -40°S. The countries lying  
99 within this range are India, Africa, and Australia exhibiting a comparatively lower infection  
100 rate as well as the death toll among the top 20 list of countries. Some few cases are found in  
101 different scenarios with slightly higher infection rates such as Malaysia, Indonesia, and  
102 Australia. This may be due to higher topographical elevation or RL of the respective  
103 locations and also could be due to seasonal change in the location. This gives an indication  
104 that temperature plays a vital role in the outbreak or spreading of this virus.



107 Figure 2: Global Temperatures variations for the last four months a) Nov 2019, b) Dec 2019,  
108 c) Jan 2020, d) Feb 2020. (source: University of Mine)

109 The next factor that contribute could be precipitation, however, in this regards the past five  
110 months data (Nov 2019 – March 2020) is carefully analyzed and presented in Figure 3. A  
111 higher precipitation is observed close to the equator. On the other hand, it has been observed  
112 that those highly affected regions such as USA, Europe, South China and Japan have no such  
113 significant precipitation on their land but their neighboring areas encountered moderately  
114 high rainfall (Figure 3). Therefore, it could be inferred that the neighboring regions having  
115 rainfall < 400 mm have significantly contributed to the favorable growth of Covid-19.

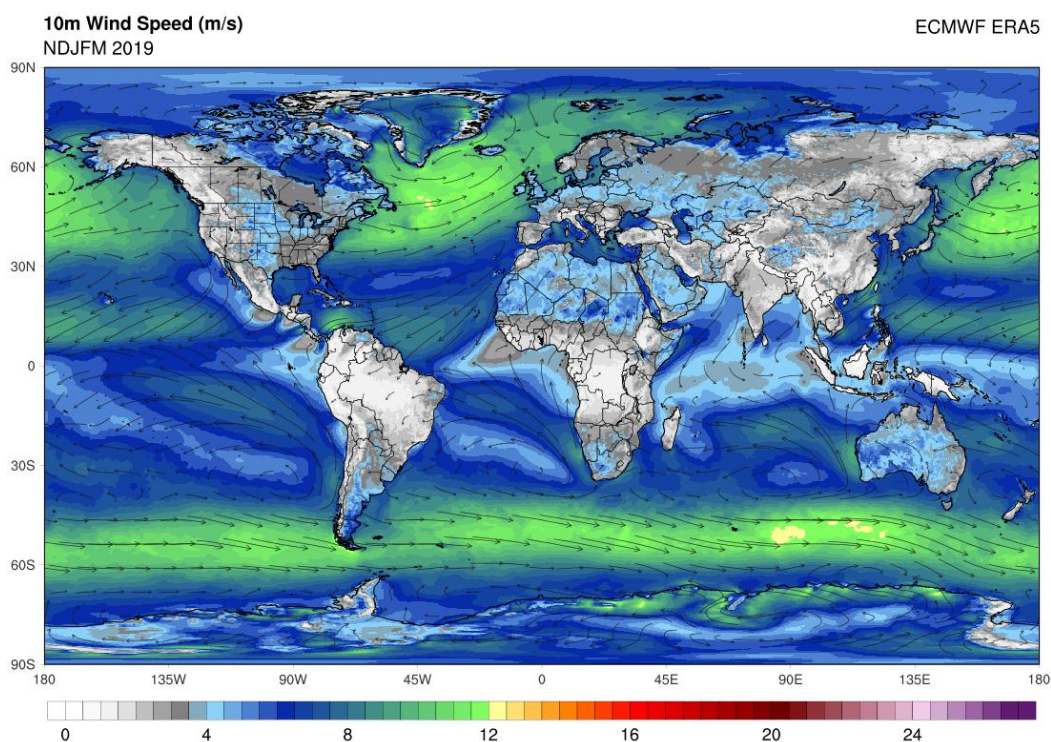


116  
117 Figure 3: Variations of precipitation (m) worldwide during the last five months (Nov 2019-  
118 March 2020)

119 The third factor that could contribute is wind speed and the past five months wind data is  
120 shown in Figure 4. It has been observed from figure 4 that the speed of wind for the highly  
121 affected regions such as USA, Europe, and China experienced a velocity of about 10-12 m/s  
122 during the considered period. However, India, South America and central South Africa

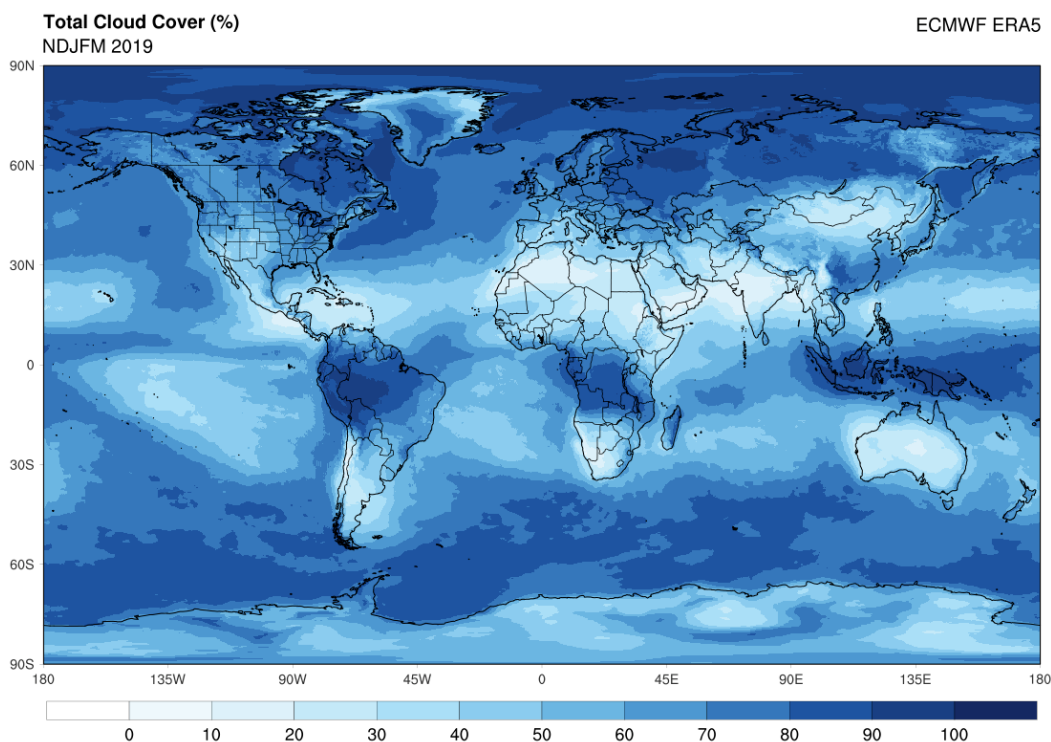
123 experienced a wind speed  $<2$  m/s. This observation suggests that the wind speed may also  
124 contribute to favorable growth of Covid-19.

125 The Fourth factor that could contribute is a cloud cover. The higher cloud coverage is  
126 observed (Figure 5) slightly away from the equator. However, those highly affected countries  
127 have approximate cloud coverage ranging between 70-80% in these past four months.



128  
129 Figure 4: Variations of wind speed (m/s) worldwide during the last five months (Nov 2019-  
130 March 2020)





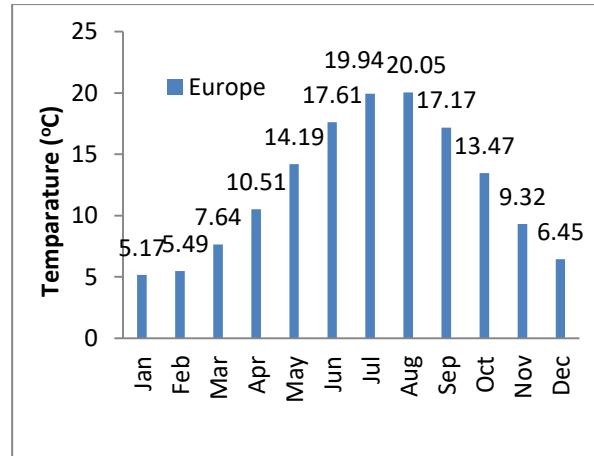
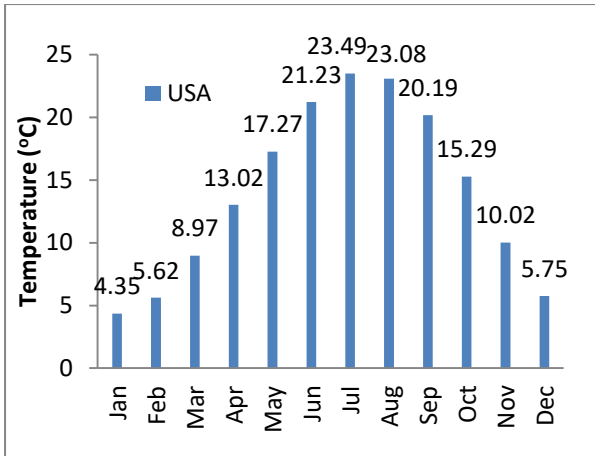
131

132 Figure 5: Variations of cloud coverage (%) worldwide during the last five months (Nov 2019-  
133 March 2020)

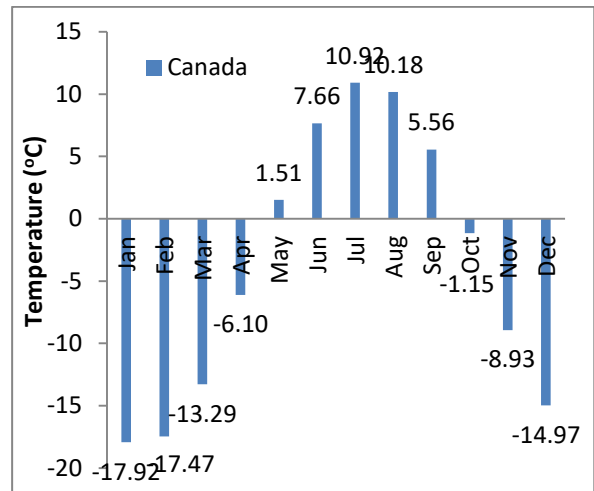
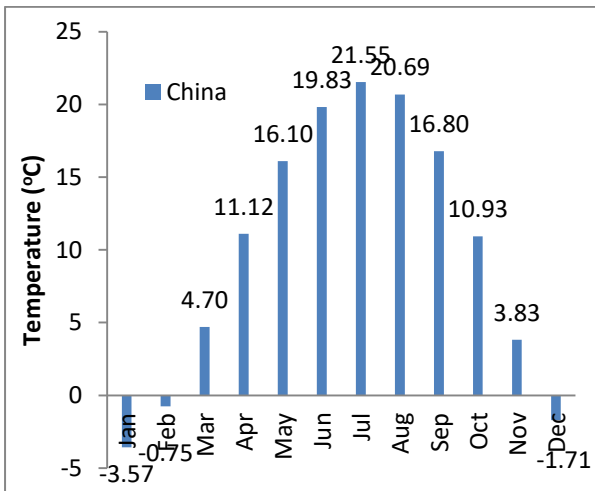
#### 134 Data Collection and processing

135 To study the effects of temperature on the growth of Covid-19, the necessary data is extracted  
136 from various reliable sources such as Wang et al (2020) and the University of Mine.  
137 However, the Wang et al (2020) presented the data from Jan 2020 to Feb 4, 2020 considering  
138 the confirmed cases observed for all the cities or regions worldwide and reported the daily  
139 avg, min and max temperatures for the respective regions. This extracted data is considered  
140 for the present study combining with other data statistically to examine the temperature  
141 dependency on the growth of Covid-19. Further, considering the spatial variations of  
142 temperature the regions under study USA, Europe, China and Canada, Siberia, Africa, India  
143 are classified as high and least affected areas respectively. The collected regional mean  
144 monthly temperature data for the last 41 years is presented in Figure 6.

145



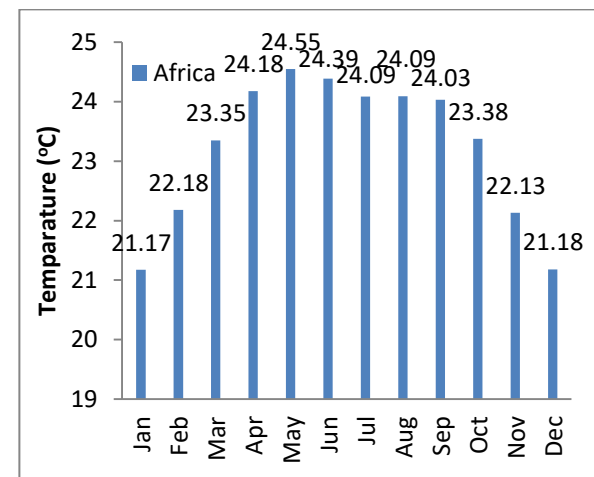
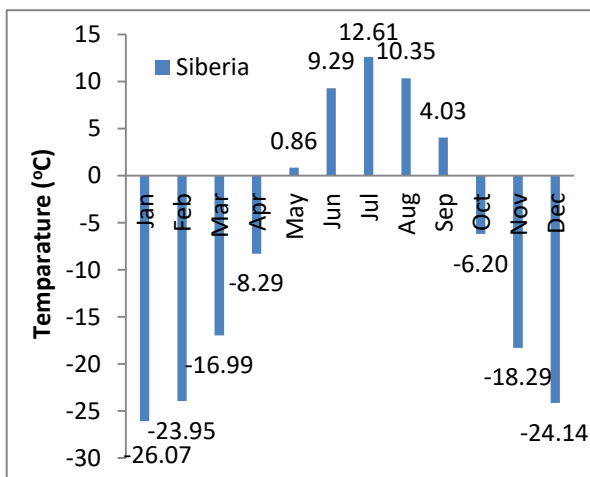
146

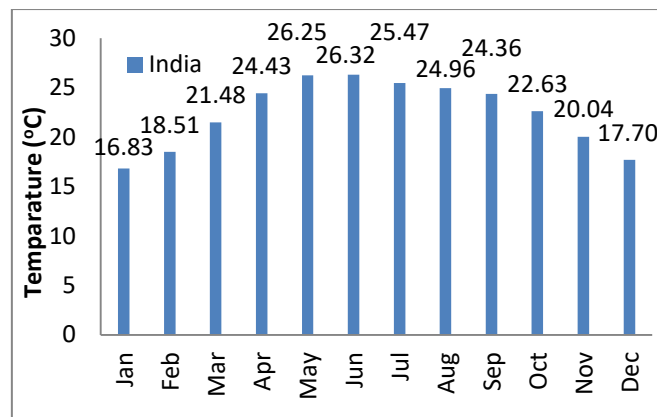


147

148

149

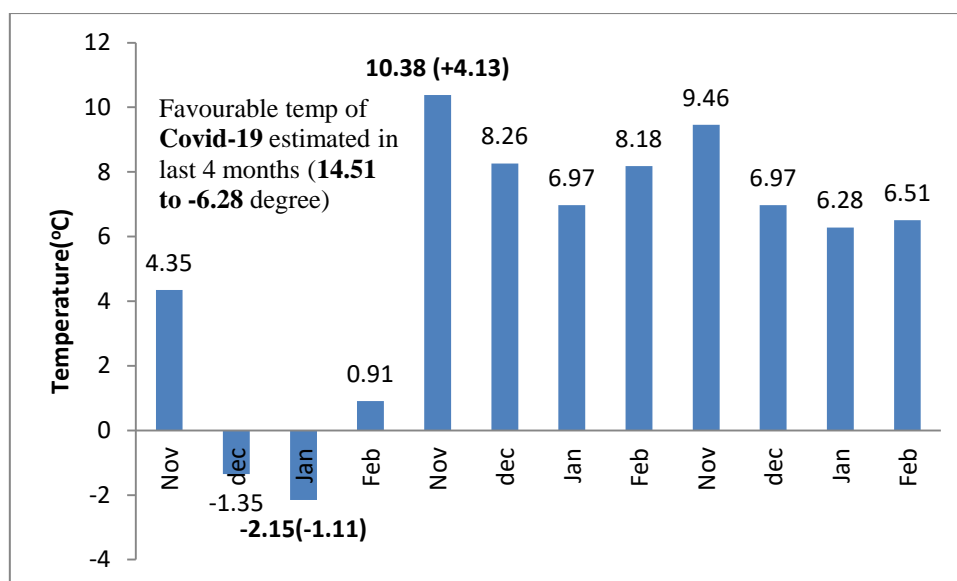




150

151 Figure 6: Mean monthly temperatures in the last 41 years (1979-2019) for the highly affected  
152 countries a) USA, b) Europe, c) China and least affected countries d) Canada, e) Siberia,  
153 f) Africa, g) India.

154 During the past four months (Nov 2019 - Feb 2020) in the considered regions, temperatures  
155 observed are high in November and low in January. However, the highest and lowest  
156 temperatures recorded for highly affected regions USA, Europe and China are  $10.02^{\circ}\text{C}$ ,  
157  $9.32^{\circ}\text{C}$ ,  $3.83^{\circ}\text{C}$  and  $4.35^{\circ}\text{C}$ ,  $5.17^{\circ}\text{C}$ ,  $-3.57^{\circ}\text{C}$  respectively. As well as the least affected areas  
158 Canada, Siberia, Africa, India have observed  $-8.93^{\circ}\text{C}$ ,  $-18.29^{\circ}\text{C}$ ,  $22.18^{\circ}\text{C}$ ,  $20.4^{\circ}\text{C}$  and -  
159  $17.92^{\circ}\text{C}$ ,  $-26.07^{\circ}\text{C}$ ,  $21.17^{\circ}\text{C}$ ,  $16.83^{\circ}\text{C}$  respectively. Indeed, the highest temperature in Africa  
160 is observed in February rather than November. Further, based on the highly affected regions  
161 considering past four months temperature data, the favorable temperature (Figure 7) for the  
162 growth of Covid-19 is statistically estimated to be between  $-6.28^{\circ}\text{C}$  and  $14.51^{\circ}\text{C}$  with a  
163 standard deviation of  $4.13^{\circ}\text{C}$ . Therefore, based on this obtained temperature range, it could  
164 be assumed that the intensity of Covid-19 in the highly affected regions (USA, China &  
165 Europe) would start decreasing from April and substantially disappear by October. Similarly,  
166 the pandemic may intensify in Canada between May to October and in Siberia between May  
167 to September. Indeed, Africa probably may not get affected largely.



168

169

Figure 7: Expected favorable temperature ranges estimated for Covid-19

170

### 171 Modeling and analysis

172 An insight into the nature of the global data collected on Covid-19 pandemic shows spatial  
 173 randomness similar to Poisson's distribution. Due to discontinuous characteristics or discrete  
 174 nature of data during the occurrence of infections or events, and could be reasonably applied  
 175 to estimate the number of events occurring in a particular space. However, it is probably  
 176 exhibiting independence in time. In this distribution function, events are occurring  
 177 independently and continuously but without previous memory. Hence, the cumulative  
 178 distribution/density of this function (CDF) is nothing but a step function. The occurrence of  
 179 an infection within an area is assumed to follow a Poisson distribution. In estimating hazard  
 180 rate, the probability of infection ( $Z$ ) at a given site will exceed a specified level ( $z$ ), during a  
 181 specified time ( $T$ ) such as 14 days, is represented by the following expression:

$$182 \quad P(Z > z) = 1 - e^{-\nu(z)T} \leq \nu(z)T \quad (1)$$

183 Where  $\nu(z)$  is the mean per day rate of exceedance of confirmed cases  $Z$  with respect to  $z$ .

184 The function  $\nu(z)$  incorporates the uncertainty in size and location of future events.

185

## 186 **Parameter Estimation**

187 The infection activity of a region could be described based on two parameters such as  
188 temperature and cumulative frequency or the rate of occurrences of a particular infection.  
189 Gutenberg Richter (1944) developed a relationship which assumes an exponential distribution  
190 of magnitude and is expressed as:

$$191 \quad \text{Log}N = a - bT \quad (2)$$

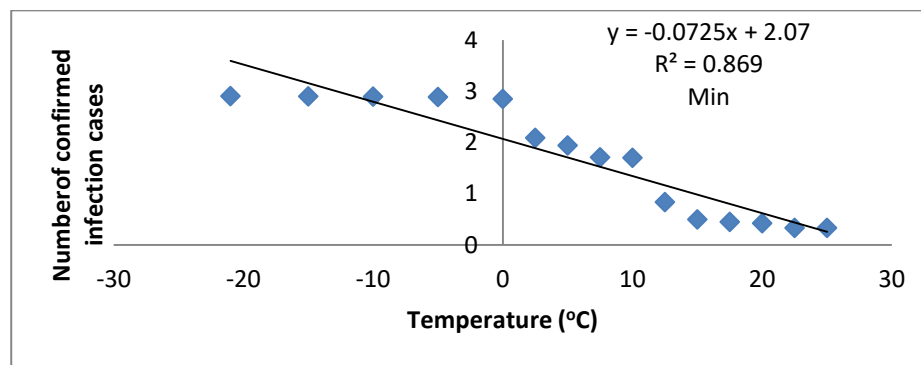
192 Where ‘a (intercept)’ and ‘b (slope)’ are the constants of regression, that actually describes  
193 the infected cases of a region,  $N$  is the mean daily rate of exceedance of certain particular  
194 confirmed cases and  $T$  is the temperature. These two parameters could be used as the key  
195 inputs in estimating mortality studies. The higher  $a$ ,  $b$  values indicate a higher level of  
196 infection (a-value) with a larger proportion of smaller size events (b-value) or in other words,  
197 the b-value describes the relative size distribution of temperature ranges. Indeed, the  
198 importance of b-value is such that a small change in b-value results in large changes in  
199 occurrences of the projected number of higher temperature dependant infections.

## 200 **Results and discussion**

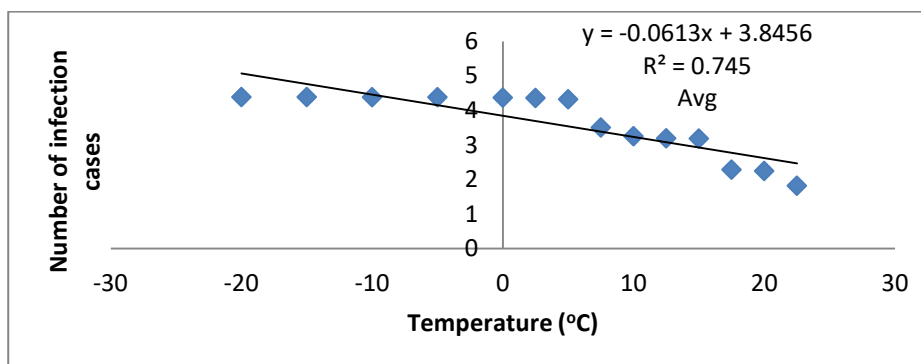
201 The G-R relations for minimum, average and maximum temperature cases affecting the total  
202 number of infection cases observed from January 2020 to 4<sup>th</sup> February 2020 (Wang et al.  
203 2020) are represented in Figure 7. However, from all these figures, when the temperature  
204 drops below 0°C, found that the slope of the line is zero, suggesting that the growth rate or  
205 infection cases are temperature independent (constant rate). However, as temperature rises  
206 greater than 0°C, it shows a significant effect on the decrease in the growth rate of infection.  
207 Further, the value of ‘a’ in the G-R relationships of the three cases minimum (2.07), average  
208 (3.8456) and maximum (2.5191) temperatures having low, high and median values

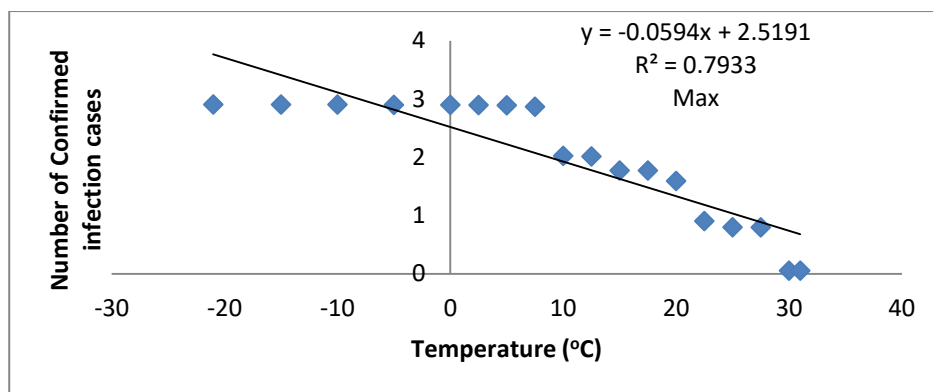
209 respectively represent the average temperature considering extreme ranges as the most  
210 favorable range for the growth of Covid-19 and therefore, cases would be much higher in this  
211 mix condition. However, a lower growth rate is found in the case of minimum temperature  
212 ranges and the median growth is observed in case of maximum temperature. Therefore, the  
213 average temperature is the highly vulnerable range for Covid-19's higher growth experienced  
214 seasonally by a region or a country. On the other hand, the higher 'b' value (0.0725) is found  
215 in case of min temperature and the least value (0.0594) is found in case of max temperature  
216 whereas median value (0.0613) found in case of avg temperature indicating higher value  
217 representing the lesser proportion of higher temperature ranges and vice versa.

218



219





220

221 Figure 7: Relationship between the temperature and number of infected cases extracted from  
222 the global data during Jan 2020- 4<sup>th</sup> Feb 2020 a) minimum, b) average c) maximum

223 Accordingly, from these outcomes, the total number of infections due to Covid19 decreases  
224 from 13-16 peoples per day, due to 1°C rise or change in temperature, which is a significant  
225 sign or impact as a result of the increase in temperatures. As per the present analysis, the  
226 strong environmental factor which could retard the growth rate of infection is temperature.  
227 Also, it can be expected or believed that the growth the rate may drops down in a reasonable  
228 rate for some countries such as India and Australia.

## 229 **Conclusions**

230 The growth rate of the global pandemic is related to the changes in temperature and found to  
231 be the most influential environmental parameter that could retard the growth by 13-16 new  
232 cases/day with a 1°C rise in it. The statistical estimation suggests -6.28°C and 14.51°C, as the  
233 most the favorable temperature range for the growth of COVID-19. Also as per the analysis,  
234 the intensity of COVID-19 in the highly affected regions (USA, China & Europe) would start  
235 decreasing from April and substantially disappear by October. Similarly, the pandemic may  
236 intensify in Canada between May to October and in Siberia between May to September.  
237 Indeed, Africa probably may not get affected largely.

## 238 **References**

239 Araújo, Miguel B, and Babak Naimi. n.d. "Spread of SARS-CoV-2 Coronavirus Likely to Be

- 240           Constrained by Climate.” <https://doi.org/10.1101/2020.03.12.20034728>.
- 241   Gupta, Dhruv. n.d. “Effect of Ambient Temperature on COVID 19 Infection Rate.”  
242           <https://ssrn.com/abstract=3558470>.
- 243   Li, Qun, Xuhua Guan, Peng Wu, Xiaoye Wang, Lei Zhou, Yeqing Tong, Ruiqi Ren, et al.  
244           2020. “Early Transmission Dynamics in Wuhan, China, of Novel Coronavirus–Infected  
245           Pneumonia.” *New England Journal of Medicine*, January.  
246           <https://doi.org/10.1056/nejmoa2001316>.
- 247   Lin, Kun, Daniel Yee Tak Fong, Biliu Zhu, and Johan Karlberg. 2006. “Environmental  
248           Factors on the SARS Epidemic: Air Temperature, Passage of Time and Multiplicative  
249           Effect of Hospital Infection.” *Epidemiology and Infection* 134 (2): 223–30.  
250           <https://doi.org/10.1017/S0950268805005054>.
- 251   Sajadi, Mohammad M, Parham Habibzadeh, Augustin Vintzileos, Shervin Shokouhi,  
252           Fernando Miralles-Wilhelm, and Anthony Amoroso. n.d. “Temperature, Humidity, and  
253           Latitude Analysis to Predict Potential Spread and Seasonality for COVID-19.”
- 254   Wang, Mao, Aili Jiang, Lijuan Gong, Lina Luo, Wenbin Guo, Chuyi Li, Jing Zheng, et al.  
255           2020. “Temperature Significant Change COVID-19 Transmission in 429 Cities.”  
256           *MedRxiv*, 2020.02.22.20025791. <https://doi.org/10.1101/2020.02.22.20025791>.
- 257