

Inflammatory markers in Covid-19 Patients: a systematic review and meta-analysis.

Golnaz Vaseghi¹, Marjan Mansourian², Raheleh Karimi ², Kiyan Heshmat-Ghahdarijani³,
Paria Rouhi⁴, Mahfam Shariati⁵, Shaghayegh Haghjoo Javanmard⁶

1 Isfahan Cardiovascular research center, cardiovascular research institute, Isfahan University of Medical Sciences, Isfahan, Iran

2 Department of Epidemiology and Biostatistics, School of Health, Isfahan University of Medical Sciences, Isfahan, Iran

3 Department of Cardiology, Isfahan Cardiovascular Research Center, Isfahan University of Medical Sciences, Iran

4 Student Research Committee, School of Medicine, Isfahan University of Medical Sciences, Isfahan, Iran

5 Department of Microbiology, School of Biology, College of Science, University of Tehran

6 Applied physiology research center, cardiovascular research institute, Isfahan University of Medical Sciences, Isfahan, Iran

Abstract

Introduction

Diagnosis of COVID-19 is based on clinical manifestation, history of exposure, positive findings on chest CT and laboratory tests. It has been shown that inflammation plays a role in pathogenesis of COVID-19.

Method

We used the necessary transformations to convert the median and IQR to mean and SD. Random-effect model using Der Simonian, and Laird methods was used if heterogeneity between studies was significant, the homogeneity among studies was assessed with I^2 Statistic, values above 50%, and for the chi-square test, P-values <0.1 was supposed statistically significant.

Results

Twelve studies were included in the analysis that all of which were conducted in China in the year 2020. The result of combining 12 articles with 772 participants showed that the pooled estimate of the mean of lymphocyte with 95% CI was (Mean: 1.01; 95% CI (0.76-1.26); p-value <0.001). About WBC the pooled result of 9 studies with 402 participants was (Mean: 5.11; 95% CI (3.90-6.32); p-value <0.001). Also the pooled mean estimate of 9 studies with 513 patients for the ratio of Neutrophil/lymphocyte was (Mean: 3.62; 95% CI (1.48-5.77); p-value=0.001). The pooled mean from the combination of 7 studies with 521 patients on CRP was (Mean: 28.75; 95% CI (8.04-49.46)).

Conclusion

Inflammatory Markers increase in patients with Covid-19, which can be a good indicator to find patients.

Keyword

Inflammatory markers; COVID-19 Patients; systematic review; meta-analysis.

Introduction

A novel coronavirus was identified as the causative pathogen of pneumonia in Wuhan City, Hubei province in China in December 2019 (1). It was subsequently named Severe Acute Respiratory Syndrome Coronavirus 2 (SARS-CoV-2). The disease was named COVID-19 by the World Health Organization (WHO) (2). On 30th January 2020, the WHO declared the Chinese outbreak of COVID-19 to be a Public Health Emergency of International Concern posing a high risk to countries with vulnerable health systems (3). To date many countries in the world in different continents was involved in COVID-19 and its complications and it became a pandemic disease.

Most patients with COVID-19 have developed mild symptoms such as dry cough, sore throat, fatigue and fever. The majority of cases have spontaneously resolved. However, some patients developed fatal complications such as organ failure, septic shock and Acute Respiratory Distress Syndrome (ARDS) and finally died (4).

Diagnosis of COVID-19 is based on clinical manifestation, history of exposure, positive findings on chest CT and laboratory tests (5). It has been shown that inflammation plays a role in pathogenesis of COVID-19 (6). In these patients release of pro-inflammatory cytokines followed by inflammasome activation produce lung injury (7).

Systemic inflammation changes the features of circulating blood cells have been suggested to be biomarkers for assessment of inflammatory activity. Neutrophilia with lymphopenia is a response of the innate immune system to systemic inflammation. The neutrophil-to-lymphocyte ratio (NLR) is another inflammatory marker, which is the proportion of absolute neutrophil count to lymphocytes on routine

complete blood count (CBC) tests. An elevated NLR is associated with the prognosis of systemic inflammatory diseases, especially infectious diseases (8).

CRP as the most representative of acute phase reactants, is elevated in many respiratory viral infections (9). CRP testing is used at the forefront for evaluation of infection and is important for COVID-19 management (10).

In this meta-analysis, we decided to evaluate the White blood cell and lymphocyte count, NLR and CRP titer in COVID-19 to use these findings in the diagnosis of the COVID-19 more rapidly and accurately.

Method

Literature search and selection criteria

We used Systematic Reviews and Meta-Analyses Statement for Scoping Reviews” (PRISMA-ScR)(11).

Pubmed, EMBASE and Scopus, were searched for eligible publications, till March 20, 2020. The search strategy was ((((((coronavirus[MeSH Terms]) OR coronavirus infections[MeSH Terms]) OR "betacoronavirus"[MeSH Terms]) OR "betacoronavirus 1"[MeSH Terms]) OR (Coronaviruses OR “Coronavirus Infection” OR “COVID-19” OR “Coronavirus Infection Disease 2019” OR “2019 Novel Coronavirus Infection” OR “2019 nCoV Infection” OR “2019 nCoV Infection” OR “2019-nCoV Infections” OR Betacoronavirus* OR “Novel Coronavirus Pneumonia” OR “2019 novel coronavirus” OR “coronavirus disease 2019” OR “nCoV” OR covid* OR “bat coronavirus”))). We included all case control, editorial and epidemiological studies. Titles and abstracts of all searches were screened independently by two

investigators. Articles deemed potentially eligible were retrieved for full-text review. Non-English publications were translated by a native/fluent speaker.

Statistical methods

Two measures of association were used in studies; mean (SD) and median (IQR). We used the necessary transformations to convert the median and IQR to mean and SD (12). Therefore, the pooled estimation is reported based on mean and a corresponding 95% CI. Random-effect model using Der Simonian and Laird methods was used if heterogeneity between studies was significant, to Summary the results, otherwise a model with fixed effect was calculated (13). The homogeneity among studies was assessed with I^2 Statistic, values above 50%, and for the chi-square test, P-values <0.1 was supposed statistically significant (14). Publication bias was evaluated with Begg's rank correlation tests and Egger's linear regression tests (15). If the test for Publication bias become significant, trim and fill methods were used to modify the results. All analyses were performed using STATA version 14.

Result

Figure.1 shows the search strategy result. Twelve studies were included in the analysis that all of which were conducted in China in the year 2020. The age of patients varied from 40 to 75 years. Summary information of each article is presented in Table.1, As shown in Table.2, The result of combining 12 articles with 772 participants showed that the pooled estimate of the mean of lymphocyte with 95% CI was (Mean:1.01; 95% CI (0.76-1.26); p-value<0.001, Figure.2). About WBC the pooled result of 9 studies with 402 participants was (Mean: 5.11; 95% CI (3.90-6.32); p-value<0.001) (the forest plot is presented in Figure.3). Also the pooled mean estimate of 9 studies with 513 patients for the ratio of

Neutrophil/lymphocyte was (Mean: 3.62; 95% CI (1.48-5.77); p-value=0.001, Figure.4).

The pooled mean from the combination of 7 studies with 521 patients on CRP was (Mean: 28.75; 95% CI (8.04-49.46); p-value<0.001, Figure.5. The heterogeneity test was not significant for any of the outcomes (p-value>0.05), so all results were based on a fixed model. Also the publication bias except for the WBC (p-value=0.026), for others were not significant. The adjusted result of Trim and fill test to modify the result of WBC, was (Mean: 4.97; 95% CI (3.81-6.13)).

Discussion

Several studies have suggested that increased amounts of cytokines in serum are associated with pulmonary damage in SARS and MERS-CoV infection (16,17).

In this meta-analysis, we studied the inflammatory markers of CBC and lymphocyte upset in patients with COVID-19. We included all epidemiological and case report studies. The patients age was between 40 to 75 years.

The blood level of WBC was normal with reduced amount of lymphocyte, as expected (18). In terms of laboratory tests, we noted that most of infected patients presented lymphopenia and low counts of CD3+ cells and CD4+ cells have been observed in COVID-19 cases (19). NLR is used as a marker of subclinical inflammation, especially in severe pneumonia (20). Here we showed that the pool NLR of COVID-19 is 3.62 which is upper than physiological range.

An increase of the NLR is common among patients with COVID-19, and especially in the severe cases, COVID-19 damages lymphocytes and the immune system. It has been suggested that NLR is the most significant factor affecting the severe illness incidence, and it has significant predictive value (19).

Based on the previous studies, Patients with 2019-nCoV pneumonia with higher NLR and age would face a worse outcome which helps their risk stratification. If there are large-scale cases, the risk stratification and management will help alleviate the shortage of medical resources and reduce the mortality of critical patients.

In conclusion, in this study, we found that patients with COVID-19 have higher CRP and NLR but low lymphocyte and normal WBC, which can help in diagnosis of these patients.

Conflict of interest

The authors of this article declare that they have no conflict of interests.

Acknowledgements

Authors would like to thank all health care workers who fight COVID-19.

Table1: studies information											
Study	Year	Country	Mean age	Male/ Female	Number of patients	WBC	lymphocyte	CRP	LDH	ESR	Neutrophil/ lymphocyte
Shi H, et al(21)	2020	China	49.5(11)	Female	81	-	1/1 (0.3)	47/6 (41.8)	-	-	-
Zhang J, et al(22)	2020	China	75	42/39	140	-	0/97 (0.59)	38/03 (40.7)	-	-	-
Xu X, et al(23)	2020	China	41	69/71	62	4/7 (1.7)	1/1 (0.52)	-	-	-	1/31 (3.6)
Wu J, et al(24)	2020	China	44 (11)	36/27	80	5/52 (2.04)	1/1 (0.54)	21/9 (35.48)	-	-	1/86 (6.85)
Huang Ch, et al(6)	2020	China	49 (12.59)	38/42	41	6/93 (4.74)	0/83 (0.37)	-	-	-	2/29 (28.75)
Yang W, et al(25)	2020	China	45.11(13.35)	30/11	149	-	1/21 (0.68)	7/25 (23)	210(94/5)	-	1/66 (4.6)
Pan F, et al(26)	2020	China	40 (9)	81/68	21	4/9 (1)	1/4 (0.5)	17/2 (20)	-	33(27)	0/84 (2.08)
Liu Y, et al(27)	2020	China	53.67 (9.76)	6/15	12	5/96 (2.6)	1/39 (1.01)	41/14 (27.53)	605.33 (254.33)	-	4/46 (3.1)
Ren L, et al(28)	2020	China	53.6 (7.5)	8/4	5	9/42 (5.84)	1/2 (0.62)	-	-	-	4/27 (1.89)
Jin YH, et al(29)	2020	China	49	3/2	38	4/45 (1.92)	0/87 (0.33)	61/8 (27.98)	-	29.3 (9.8)	-
Bai Y, et al(30)	2020	China	-	-	6	5/7 (1.8)	0/97 (0.38)	-	-	-	-

Table1: studies information

Table 2: summary of the results

	No of Study	Number of subject	Mean [95% CI]	P-value for test (ES=0)	I ² (%)	P-value for heterogeneity test	P-value for egger test	Trim and fill results (%95CI)
WBC	9	402	5.11 (3.90- 6.32)	< 0.0001	0.0	0.997	0.026	4.97 (3.81- 6.13)
lymphocyte	12	772	1.01 (0.76- 1.26)	< 0.0001	0.0	0.999	0.067	-
Neutrophil/ lymphocyte	9	513	3.62 (1.48- 5.77)	0.001	48.2	0.051	0.650	-
CRP	7	521	28.75 (8.04- 49.46)	0.007	0.0	0.796	0.240	-

Table.2: summary of the results

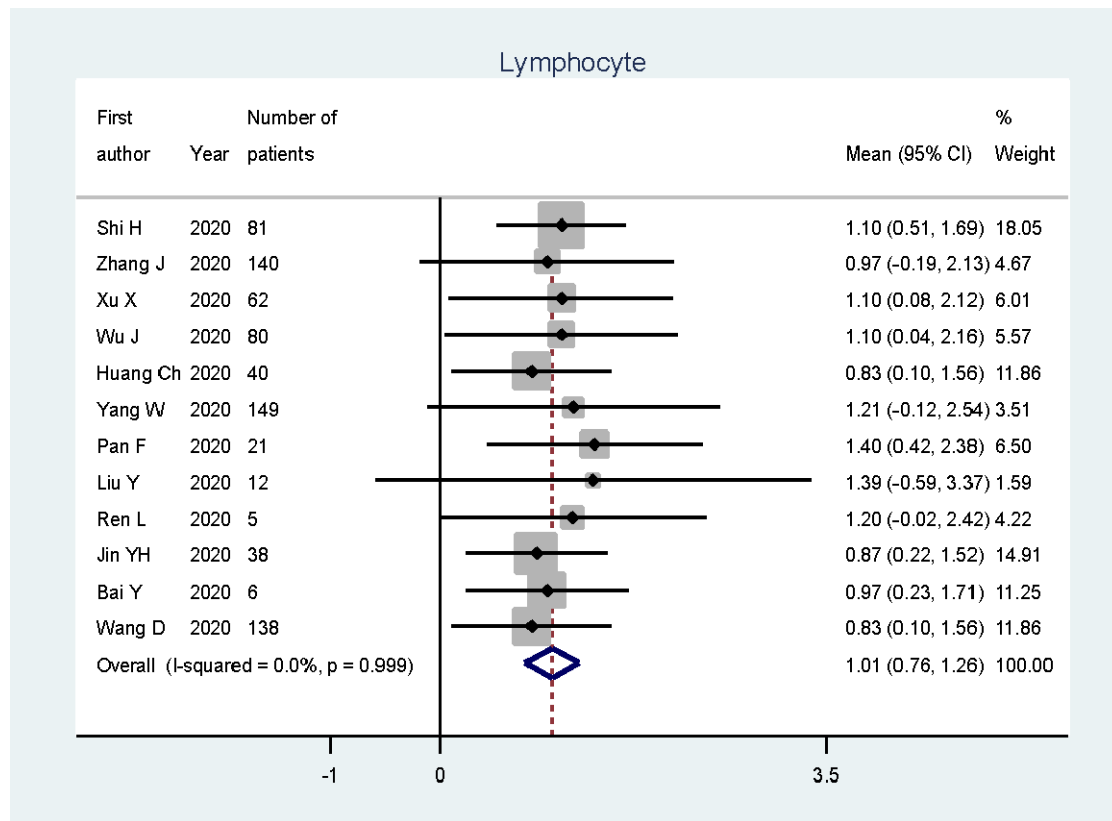


Figure.2: Forest plot of overall mean of Lymphocyte in COVID-19 patients

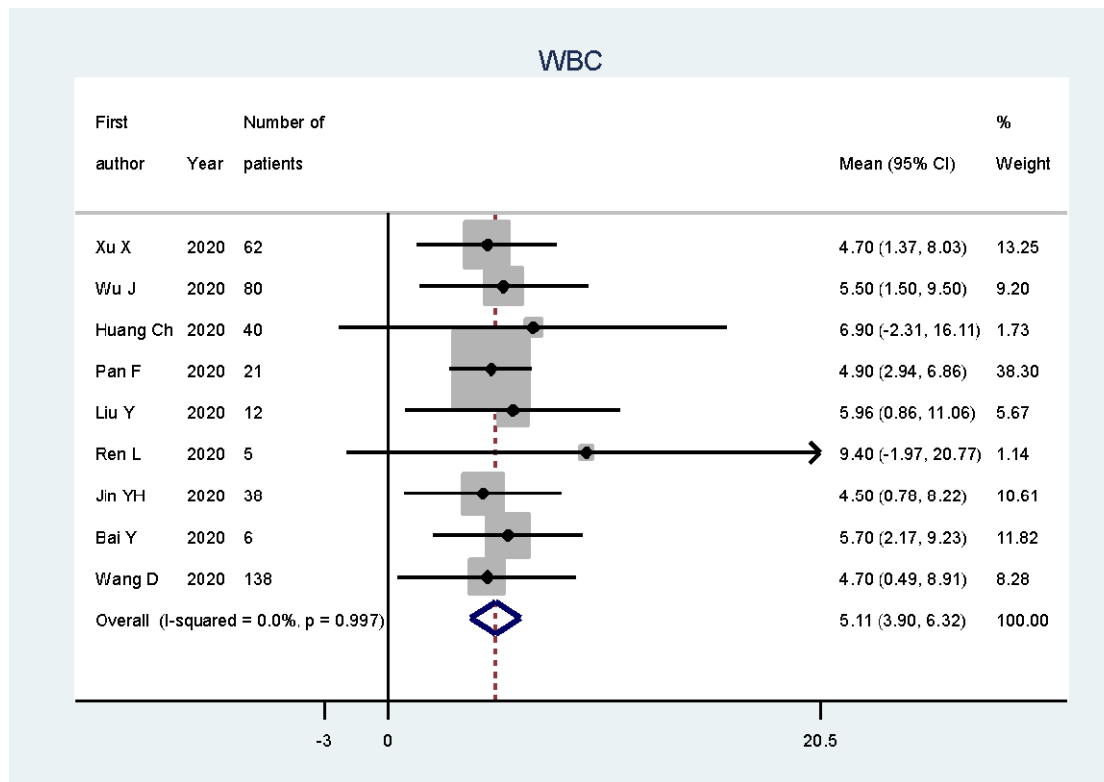


Figure.3: Forest plot of overall mean of WBC in COVID-19 patients

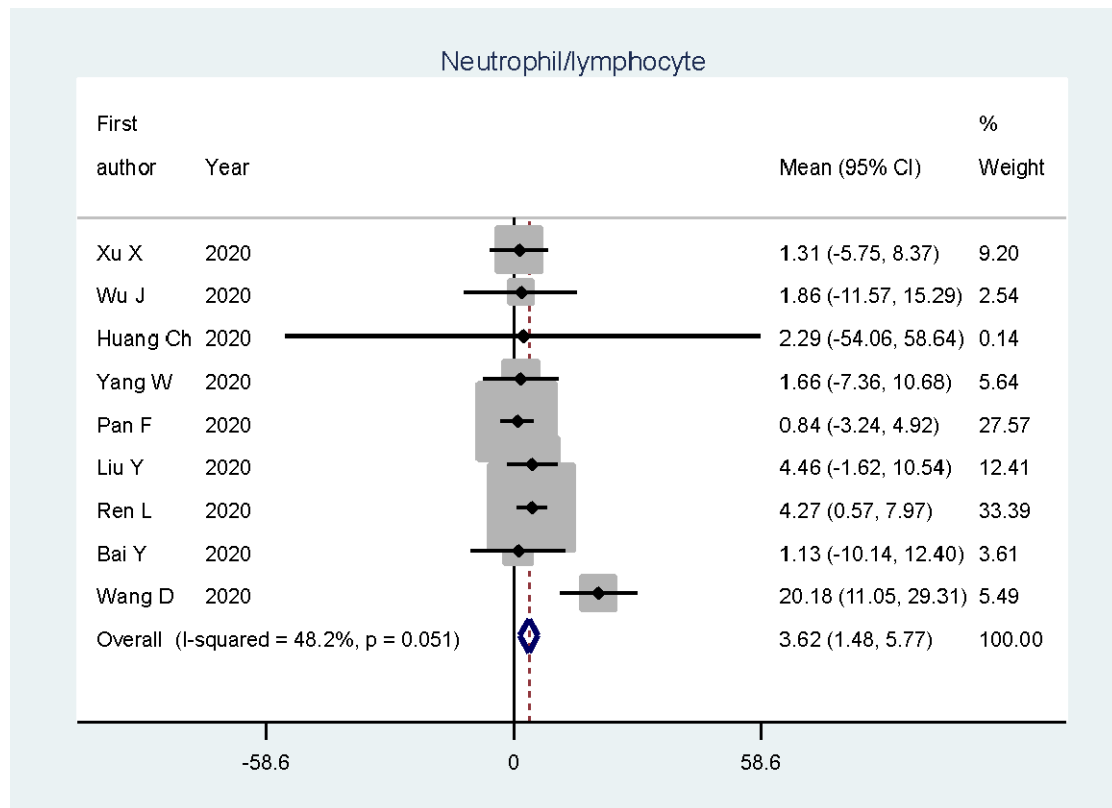


Figure.4: Forest plot of overall mean of Neutrophil/lymphocyte in COVID-19 patients

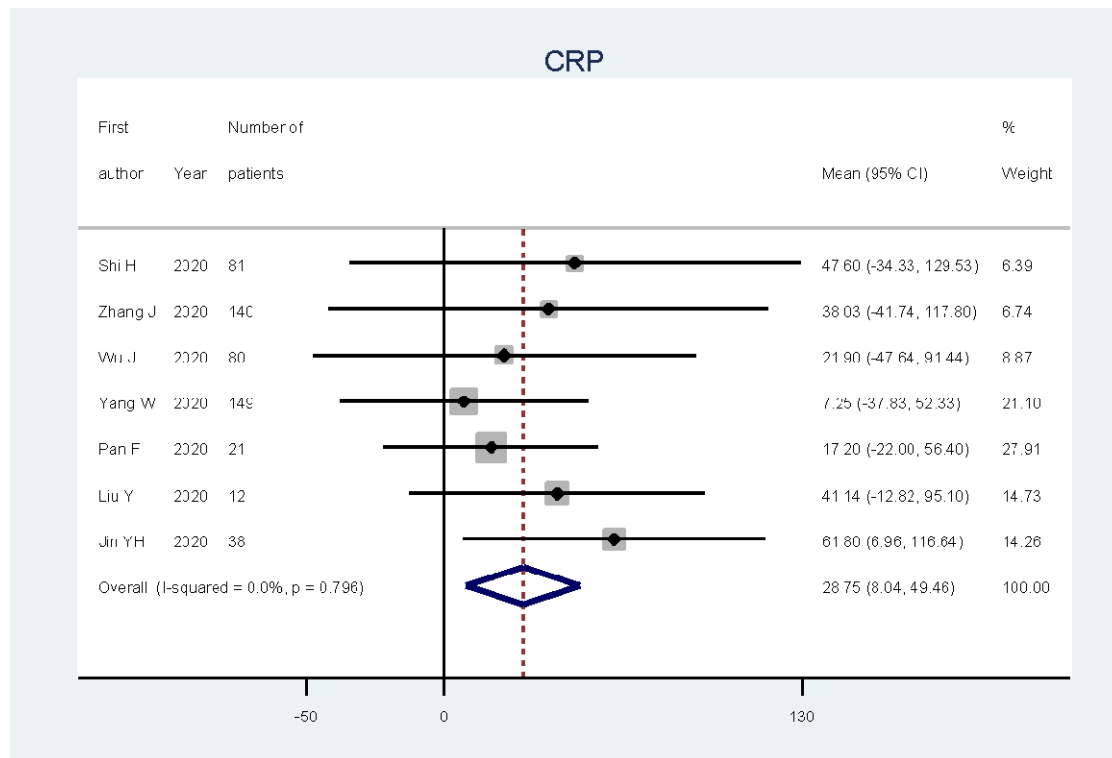
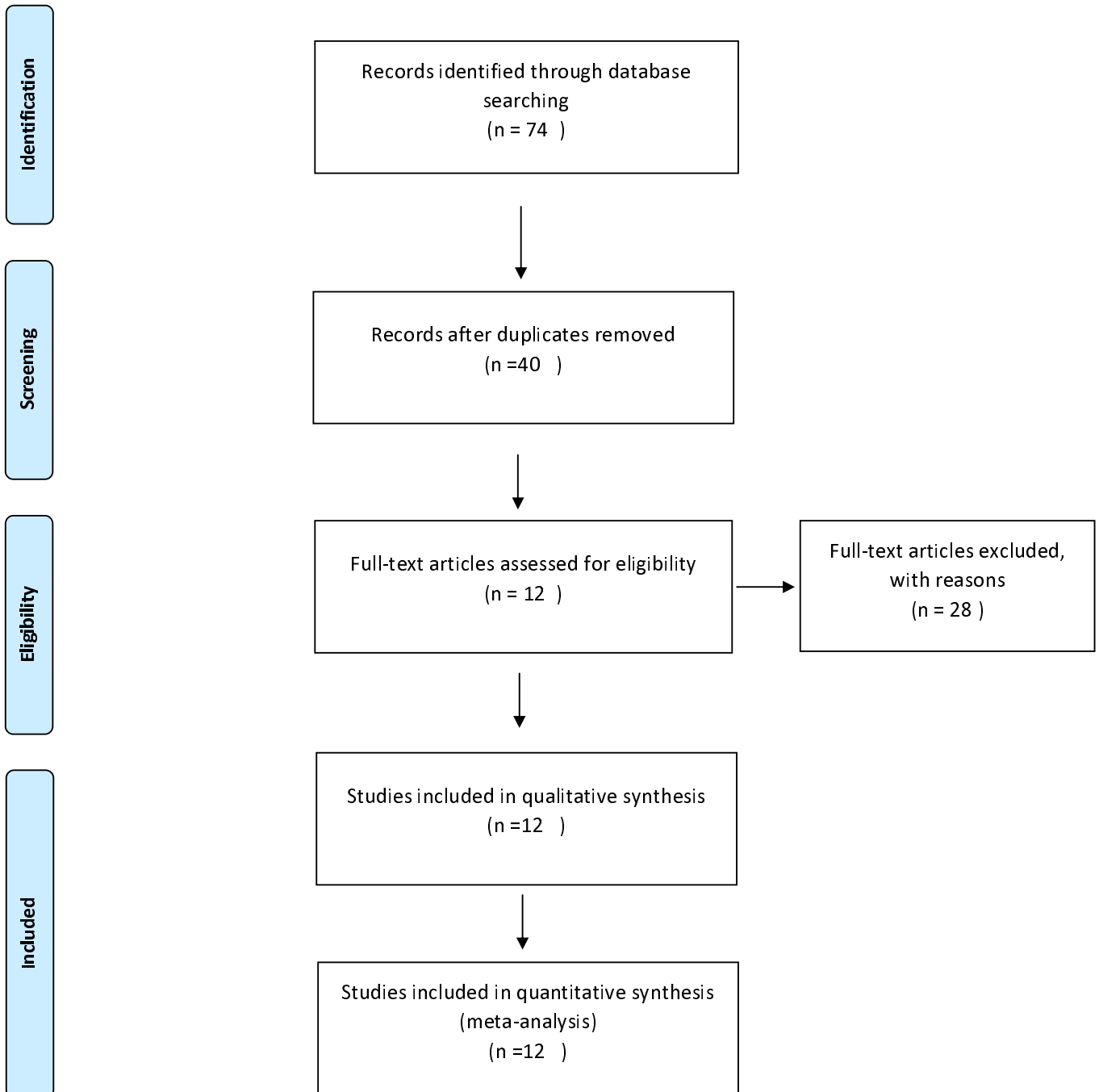


Figure.5: Forest plot of overall mean of CRP in COVID-19 patients

Figure.1: Flow diagram



References

1. Lu H, Stratton CW. Outbreak of pneumonia of unknown etiology in Wuhan , China: The mystery and the miracle. 2020;401–2.
2. WHO Director-General’s remarks at the media briefing on 2019-nCoV on 11 February 2020 [Internet]. 11 February 2020. 2020. Available from: <https://www.who.int/dg/speeches/detail/who-director-general-s-remarks-at-the-media-briefing-on-2019-ncov-on-11-february-2020>
3. Timor-Leste. Coronavirus Disease 2019 (COVID-19) Situation Report – 12 [Internet]. 20 February 2020. 2020. Available from: https://www.who.int/docs/default-source/searo/timor-leste/20-02-2020-tls-sitrep-12-ncov-eng.pdf?sfvrsn=5a0b21c5_2
4. Chen N, Zhou M, Dong X, Qu J, Gong F, Han Y, et al. Epidemiological and clinical characteristics of 99 cases of 2019 novel coronavirus pneumonia in Wuhan, China: a descriptive study. *Lancet* [Internet]. (PG-). Available from: [https://doi.org/10.1016/S0140-6736\(20\)30211-7](https://doi.org/10.1016/S0140-6736(20)30211-7) NS -
5. Wang Y, Wang Y, Chen Y, Qin Q. Unique epidemiological and clinical features of the emerging 2019 novel coronavirus pneumonia (COVID-19) implicate special control measures. *J Med Virol* [Internet]. 2020;n/a(n/a PG-). Available from: <https://doi.org/10.1002/jmv.25748>
6. Huang C, Wang Y, Li X, Ren L, Zhao J, Hu Y, et al. Clinical features of patients infected with 2019 novel coronavirus in Wuhan, China. *Lancet* [Internet]. 2020;(PG-). Available from: <https://www.ncbi.nlm.nih.gov/pubmed/31986264>
7. Conti P, Ronconi G, Caraffa A, Gallenga C, Ross R, Frydas I, et al. Induction of pro-

- inflammatory cytokines (IL-1 and IL-6) and lung inflammation by Coronavirus-19 (COVI-19 or SARS-CoV-2): anti-inflammatory strategies. Vol. 34, Journal of biological regulators and homeostatic agents. 2020.
8. Liu X, Shen Y, Wang H, Ge Q, Fei A, Pan S. Prognostic Significance of Neutrophil-to-Lymphocyte Ratio in Patients with Sepsis: A Prospective Observational Study. 2016;2016.
 9. Jeon J-S, Rheem I, Kim JK. C-reactive protein and respiratory viral infection. Korean J Clin Lab Sci. 2017;49(1):15–21.
 10. Zhang J, Zhou L, Yang Y, Peng W, Wang W, Chen X. Therapeutic and triage strategies for 2019 novel coronavirus disease in fever clinics. *Lancet Respir Med* [Internet]. 2020 Mar 1;8(3):e11–2. Available from: [https://doi.org/10.1016/S2213-2600\(20\)30071-0](https://doi.org/10.1016/S2213-2600(20)30071-0)
 11. Tricco AC, Lillie E, Zarin W, O’Brien KK, Colquhoun H, Levac D, et al. PRISMA extension for scoping reviews (PRISMA-ScR): checklist and explanation. *Ann Intern Med*. 2018;169(7):467–73.
 12. Wan X, Wang W, Liu J, Tong T. Estimating the sample mean and standard deviation from the sample size , median , range and / or interquartile range. 2014;1–13.
 13. Dersimonian R, Laird N. *Meta-Analysis in Clinical Trials* *. 1986;188:177–88.
 14. Higgins JPT, Thompson SG, Deeks JJ, Altman DG. Measuring inconsistency in meta-analyses. :557–60.
 15. Borenstein M, Hedges L V, Higgins JPT, Rothstein HR. A basic introduction to fixed-effect and random-effects models for meta-analysis. *Research Synthesis Methods*, 1 (2), 97-111. 2010.

16. Wong CK, Lam CWK, Wu AKL, Ip WK, Lee NLS, Chan IHS, et al. Plasma inflammatory cytokines and chemokines in severe acute respiratory syndrome. *Clin Exp Immunol* [Internet]. 2004 Apr;136(1):95–103. Available from: <https://pubmed.ncbi.nlm.nih.gov/15030519>
17. Mahallawi W, Khabour O, Zhang Q, Makhdoum H, Suliman B. MERS-CoV infection in humans is associated with a pro-inflammatory Th1 and Th17 cytokine profile. *Cytokine*. 2018 Feb 1;104:8–13.
18. Clinical and immunologic features in severe and moderate forms of Coronavirus Disease 2019. 2020;(1095).
19. Qin C, Zhou L, Hu Z, Zhang S, Yang S, Tao Y, et al. Dysregulation of immune response in patients with COVID-19 in Wuhan, China. *China* (February 17, 2020). 2020;
20. Curbelo J, Bueno SL, Galván-Román JM, Ortega-Gómez M, Rajas O, Fernández-Jiménez G, et al. Inflammation biomarkers in blood as mortality predictors in community-acquired pneumonia admitted patients: Importance of comparison with neutrophil count percentage or neutrophil-lymphocyte ratio. *PLoS One*. 2017;12(3).
21. Shi H, Han X, Jiang N, Cao Y, Alwalid O, Gu J, et al. Radiological findings from 81 patients with COVID-19 pneumonia in Wuhan, China: a descriptive study. *Lancet Infect Dis* [Internet]. 2020;3099(20):1–10. Available from: <http://www.ncbi.nlm.nih.gov/pubmed/32105637>
22. Zhang J-J, Dong X, Cao Y-Y, Yuan Y-D, Yang Y-B, Yan Y-Q, et al. Clinical characteristics of 140 patients infected by SARS-CoV-2 in Wuhan, China. *Allergy* [Internet]. 2020;(PG-10.1111/all.14238):10.1111/all.14238. Available from: <https://pubmed.ncbi.nlm.nih.gov/32077115> NS -

23. Xu X-W, Wu X-X, Jiang X-G, Xu K-J, Ying L-J, Ma C-L, et al. Clinical findings in a group of patients infected with the 2019 novel coronavirus (SARS-Cov-2) outside of Wuhan, China: retrospective case series. *BMJ [Internet]*. 2020;368(PG-m606):m606. Available from: <http://www.bmj.com/content/368/bmj.m606.abstract> NS -
24. Wu J, Wu X, Zeng W, Guo D, Fang Z, Chen L, et al. Chest CT Findings in Patients with Corona Virus Disease 2019 and its Relationship with Clinical Features. *Invest Radiol [Internet]*. 2020; Available from: <http://www.ncbi.nlm.nih.gov/pubmed/32091414>
25. Yang W, Cao Q, Qin L, Wang X, Cheng Z, Pan A, et al. Clinical characteristics and imaging manifestations of the 2019 novel coronavirus disease (COVID-19):A multi-center study in Wenzhou city, Zhejiang, China. *J Infect [Internet]*. 2020;(PG-). Available from: <http://www.sciencedirect.com/science/article/pii/S0163445320300992> NS -
26. Pan F, Ye T, Sun P, Gui S, Liang B, Li L, et al. Time Course of Lung Changes On Chest CT During Recovery From 2019 Novel Coronavirus (COVID-19) Pneumonia. *Radiology*. 2020;200370.
27. Liu Y, Yang Y, Zhang C, Huang F, Wang F, Yuan J, et al. Clinical and biochemical indexes from 2019-nCoV infected patients linked to viral loads and lung injury. *Sci China Life Sci [Internet]*. 2020;(PG-). Available from: <https://doi.org/10.1007/s11427-020-1643-8> NS -
28. Ren L, Wang Y, Wu Z, Xiang Z, Guo L, Xu T, et al. Original Article Identification of a novel coronavirus causing severe pneumonia in human: a descriptive study. :1–27.

29. Jin Y-H, Cai L, Cheng Z-S, Cheng H, Deng T, Fan Y-P, et al. A rapid advice guideline for the diagnosis and treatment of 2019 novel coronavirus (2019-nCoV) infected pneumonia (standard version). *Mil Med Res* [Internet]. 2020;7(1 PG-4):4. Available from: <https://doi.org/10.1186/s40779-020-0233-6> NS -
30. Bai Y, Yao L, Wei T, Tian F, Jin D-Y, Chen L, et al. Presumed asymptomatic carrier transmission of COVID-19. *Jama*. 2020;
31. Wang D, Hu B, Hu C, Zhu F, Liu X, Zhang J, et al. Clinical Characteristics of 138 Hospitalized Patients with 2019 Novel Coronavirus-Infected Pneumonia in Wuhan, China. *JAMA - J Am Med Assoc*. 2020;1-9.