

1 **Fixed-Life or Rechargeable Battery for Deep Brain Stimulation: Preference and**
2 **Satisfaction in Chinese Patients with Parkinson's Disease**

3 Xian Qiu^{1,2*}, Tingting Peng^{1*}, Zhengyu Lin¹, Kaiwen Zhu¹, Yuhan Wang¹, Bomin
4 Sun¹, Keyoumars Ashkan³, Chencheng Zhang¹, Dianyou Li¹

5

6 ¹Department of Functional Neurosurgery, Ruijin Hospital, Shanghai Jiao Tong
7 University School of Medicine, Shanghai, China

8 ²School of Nursing, Shanghai Jiao Tong University, Shanghai, China

9 ³Department of Neurosurgery, King's College Hospital, London, UK

10

11 *These two authors contributed equally to this work.

12

13 Correspondance :

14 Chencheng Zhang icczhang.org

15 Dianyou Li ldy11483@rjh.com.cn

16 **Abstract**

17 **Objective**

18 To evaluate the preference and satisfaction in the Chinese Parkinson's disease (PD)
19 patients treated with deep brain stimulation (DBS).

20 **Background**

21 DBS is a widely used therapy for PD. There is now a choice between fixed-life
22 implantable pulse generators (IPGs) and rechargeable IPGs, each having their
23 advantages and disadvantages.

24 **Methods**

25 Two hundred and twenty PD patients treated with DBS completed a self-designed
26 questionnaire to assess long-term satisfaction and experience with the type of battery
27 they had chosen, and the key factors affecting their choices. The survey was
28 performed online and double-checked for completeness and accuracy.

29 **Results**

30 The median value of follow-up length was 18 months. 87.3% of the DBS used
31 rechargeable IPGs (r-IPG). The choice between rechargeable and non-rechargeable
32 IPGs was significantly associated with the patient's affordability ($\chi^2_{(1)} = 19.13$, $p <$
33 0.001). Interestingly, the feature of remote programming significantly affected
34 patients' choices between domestic and imported brands ($\chi^2_{(1)} = 16.81$, $p < 0.001$).
35 87.7% of the patients were satisfied with the stimulating effects as well as the
36 implanted device. 40.6% of the patients with r-IPGs felt confident handling their
37 devices within one week after discharge. More than half of the patients checked their
38 batteries every week. The mean interval for battery recharge was 4.3 days. 57.8% of

39 the patients spent around one-hour recharging and 71.4% of them recharged the
40 battery independently. The most popular way for patients to learn about DBS surgery
41 was through media (79/220, 35.9%), including the Internet and television programs.
42 The rehabilitation (40.6%, 78/192), and programming (36.5%, 70/192) were two main
43 courses that most patients wanted to learn after surgery.

44 **Conclusion**

45 Most patients were satisfied with their choices of IPGs. The patients' financial status
46 and remote programming function were the two most critical factors in their decision.
47 The skill of using rechargeable IPG was easy to master by most patients.

48

49 **Introduction**

50 Deep brain stimulation (DBS) is a widely used treatment for Parkinson's disease (PD),
51 which achieves its effects by continuous application of electrical currents. The power
52 comes from an implantable pulse generator (IPG), which was originally designed to
53 be non-rechargeable. These IPGs/batteries typically lasted three to five years,
54 depending on the diagnosis and parameter settings, before they had to be replaced. As
55 the energy consumption in continuous DBS is high, battery depletion is the most
56 common cause for further surgery in DBS patients.^{1,2} Although an IPG replacement is
57 a minor surgical procedure compared with the primary operation, infection risk and
58 wound healing (eg. scar formation, skin thinning) can become problematic after
59 several IPG replacements.³

60

61 Rechargeable batteries were introduced in 2008 and offer a number of advantages
62 over fixed-life batteries, including longer battery life, requiring fewer battery
63 replacement surgeries, less battery depletion-related problems (symptom deterioration
64 and injuries), and a smaller profile.⁴ Studies examining the use of rechargeable
65 batteries for DBS have demonstrated that they are well tolerated, having high patient
66 satisfaction rate, and can be cost-effective. However, patients need to check their
67 battery status and recharge regularly, by using a handheld device. Recharge frequency
68 and duration depend on patient's individual power consumption. Although it is not
69 difficult to perform, the recharge process can be challenging for DBS patients as most
70 of them are elderly PD patients with various level of cognitive deficits.⁵

71

72 In addition to battery options, rapid technological development in the last decade has
73 made neurologists and neurosurgeons—face the challenge of selecting an ideal
74 individualized DBS system based on multiple variables such as lead geometry and
75 different programming platforms.⁶ Factors including DBS target, the amount of
76 current needed, patient’s overall health condition and their ability to deal with
77 interactive devices and recharging, social support network, and personal financial
78 status are of prime importance in delivering individualized therapy to patients.
79 Another critical area which has not been fully explored is the influence of patient’s
80 individual preferences and lifestyle concerns on the choice of the DBS device.
81 Patient’s decision on DBS battery choice and the influencing factors of the decision
82 have only been investigated in a few studies in Europe.^{5,7-9}

83

84 Neuromodulation with implantable devices is one of the most technologically driven
85 discipline within neurosurgery. In recent years, there has been a considerable
86 expansion in choices of available DBS hardware allowing for more personalized
87 therapies, maximizing the benefits and acceptability, whilst minimizing the risks. At
88 the same time, DBS specialists also face the challenge of selecting among a mass of
89 options to choose the most appropriate device for each patient. Understanding why
90 and how patients make their choices is critical not only to improve patient
91 acceptability and satisfaction of the therapy, but also to innovate the next generation
92 devices. In China, three DBS manufacturers (Medtronic, PINS and SceneRay) are
93 currently offering non-rechargeable (nr-IPG) and rechargeable IPGs (r-IPG) from
94 1998 and 2013, 2013 and 2014, 2016 and 2019, respectively (Supplemental Figure 1).
95 In this article, we sought to report patients' satisfaction and preferences for the type of
96 IPGs they chose.

97

98 **Method**

99 Participants

100 Patients diagnosed with idiopathic PD who had undergone DBS surgery in the
101 Department of Functional Neurosurgery in Ruijin Hospital Affiliated to Shanghai Jiao
102 Tong University School of Medicine were invited to participate in this survey. Patients
103 implanted with either nr-IPG or r-IPG were included in this study. 768 patients with
104 PD who had received DBS surgeries in our center were contacted for this study.

105

106 Questionnaire

107 An internet-based questionnaire (powered by www.wjx.cn) was developed and was
108 distributed via an online chat software Wechat. The questions comprised of various
109 aspects of the DBS devices that the patients had chosen, including
110 (but not limited to) patients' demographics, factors that impacted patients' choices,
111 patients' satisfaction about their choices and DBS surgery. In particular, several
112 questions were designed specifically for patients with an r-IPG device: the feasibility
113 and reliability of the battery recharge, the interval and duration of the recharge, and
114 the convenience of post-operative management of r-IPG. All patients provided their
115 consent for data collection and analysis at the beginning of the questionnaire before
116 study participation. This study was approved by Ruijin Ethical Committee.

117

118 Statistical analysis

119 Data were analyzed with the SPSS software (Version 23.0. Amonk, NY: IBM Corp.).
120 Continuous variables were expressed as Mean \pm SD or median value with
121 interquartile range (IQR). Categorical variables were presented as frequencies (%).
122 We used Fisher's exact test to assess the-relationship between patient's affordability
123 and the choice of r-IPG versus nr-IPG. We used Pearson's or Yates' continuity
124 corrected Chi-square test to evaluate the influencing factors for patients' choices of
125 international versus domestic manufacturers in r-IPG group, and to compare the
126 satisfaction rate between patients with r-IPG and nr-IPG. A p-value < 0.05 was
127 considered significant.

128

129 **Results**

130 Demographic data

131 220 patients (135 men and 85 women) with PD completed the survey and were
132 available for analysis. The response rate was 28.6% (220/768). Among them, 192
133 (87.3%) patients were implanted with r-IPGs and 28 (12.7%) patients with nr-IPGs.
134 142 (64.5%) patients had chosen a device from the international manufacturer (i.e.,
135 Medtronic) and 78 (35.5%) patients had chosen a device from domestic manufacturers
136 (i.e., PINS or SceneRay). Overall, the mean age was 62.8 ± 9.8 years. The median
137 value of the follow-up length was 18 (IQR: 8–36) months. Demographic data was
138 listed in Table 1.

139

140 Source of DBS information

141 The web and television media and doctor's referrals served as two important tunnels
142 for PD patients to know DBS before seeking for surgery [36.1% (79/219) and 35.6%
143 (78/219), respectively]. The remaining quarter of the patients (25.5%, 56/219) came
144 to our center learned the information about DBS by the word of mouth from other
145 patients (Table 2).

146

147 Influencing factors for patients' choices of rechargeable versus non-rechargeable
148 battery

149 As illustrated in Figure 1, approximately half of the patients (51.6%, 99/192) who had
150 chosen r-IPGs had a budget between 200 to 300 thousands RMB, while 53.6% (15/28)
151 of patients with nr-IPGs only had a budget between 100 to 200 thousands RMB. The
152 choice of r-IPG versus nr-IPG was significantly associated with the patient's
153 affordability ($p = 0.0001$). Concretely, the percentage of patient's reporting 'concern'
154 or 'serious concern' about economic issues was higher in nr-IPG group (82.1%, 23/28)
155 than that in r-IPG group (60.9%, 117/192) (Figure 2D). Interestingly, the need for
156 further surgeries to replace the battery, as well as the need for recharging the battery,
157 was considered a concern or a serious concern by 82.1% (23/28) and by 64.3% (18/28)
158 of the patients with nr-IPGs, respectively, also higher than r-IPG group (72.9%
159 (140/192) and 47.9% (92/192), respectively) (Figure 2B–2C). There was 46.4%
160 (13/28) of the patients with nr-IPGs and 51.6% (99/192) of the patients with r-IPGs
161 reported 'concern' or 'serious concern' about the size of battery (Figure 2A).

162

163 Influencing factors for r-IPG patients' choices between international and domestic
164 manufacturers

165 Among 192 patients with r-IPGs, 136 (70.8%) patients had chosen a device from the
166 international manufacturer (i.e., Medtronic), and 56 (29.2%) had chosen a device from
167 the domestic manufacturer (i.e., PINS or SceneRay). The patient's economic issue,
168 international reputation of the product, as well as the product feature of remote
169 programming significantly affected r-IPG patients' choices between international and
170 domestic manufacturers ($p = 6.28E-7$, $5.40E-11$, and $3.68E-7$, respectively) (Figure
171 3A–3C). Not surprisingly, patient's choice was not influenced by clinicians ($p = 0.202$)
172 (Figure 3D).

173

174 Satisfaction

175 The majority of the patients (87.7%, 193/220) were satisfied with stimulating effects
176 as well as the implanted device. 10% (22/220) of them claimed that their expectation
177 had not been met after the surgery. The satisfaction rate among patients with r-IPGs
178 (88.0% 169/192) showed no statistical significance compared with those with nr-IPGs
179 (85.7%, 24/28) ($p = 0.969$) (Table 3). Also, no statistical significance was observed
180 for the satisfaction rate between international and domestic manufacturers in patients
181 with r-IPGs ($p = 0.729$). 92.7% (178/192) of the patients with r-IPGs and 92.9%
182 (26/28) with nr-IPGs would choose the same type of the device when completing the
183 questionnaire.

184

185 Recharging process

186 The majority of the r-IPG patients (71.4%, 137/192) were capable of battery recharge
187 independently. The remaining patients (28.6%, 55/192), however, needed partners to
188 check and recharge the battery. Most of the patients with r-IPGs and their partners

189 (92.7%, 178/192) felt confident of handling their device; 43.8% (78/178) of them
190 reported the same confidence within one week after discharge from hospital. More
191 than half of the patients (64.1%, 123/192) checked the battery every week, and most r-
192 IPG patients (92.2%, 177/192) preferred recharging when the battery level was over
193 50%. The mean interval for battery recharge was 4.3 days. More than half of the
194 patients (57.8%, 111/192) spent around 1 hour recharging. Notably, 8.3% (16/192) of
195 the r-IPG patients reported at least one episode of recharge failure at some point, and
196 more than half of them (68.9%, 11/16) failed to perform troubleshooting (Table 4).

197

198 Life with a r-IPG

199 During the routine recharging process, most of the r-IPG patients (92.7%, 178/192)
200 preferred to sit or lie down to moving around. Only 26.6% (51/192) of the r-IPG
201 patients reported at least one travel history after implantation, 78.4% (40/51) of whom
202 recharged during their vacation. 11.5% (22/192) of the r-IPG patients continued their
203 professional occupation after the surgery, but only one patient had recharged the IPG
204 at work (Table 5).

205

206 **Discussion**

207 This study presented patients' views independent of clinical influences and revealed
208 that most patients, around 80%, opted for the rechargeable batteries. A significant
209 factor contributing to this choice was related to economic status. Nevertheless, it is
210 the effect of surgery other than the product being the main factor that determines
211 patient satisfaction. The remote programming feature significantly affected patients'
212 choice of products, which is now only available in Chinese domestic brands. The

213 recharging process is generally rated as “easy” and can be mastered within a rather
214 short amount of time. Weekly intervals to check the battery status and to recharge are
215 most common. The amount of time that needs to be invested by the patient to handle
216 and recharge the IPG is around one hour. Our cohort showed that patients were able to
217 continue their jobs and to travel with r-IPGs, but only few of our patients recharged
218 their IPGs during work or travelling.

219

220 Neither age, nor education level had a significant impact on the understanding of the
221 recharging process. Almost 25% of the patients have helpers to perform the
222 recharging process. Interestingly, there were several patients checked their batteries
223 every one year or more, which meant they recharged the IPG frequently but they did
224 not check the IPG status as much. Although it was not reported in these participants,
225 we had patients who failed to get timely recharge. Restarting power depleted IPGs
226 needs continuous charging for more than 5 hours. In most cases, power depletion did
227 not cause irreversible consequences, but one patient got aspiration pneumonia during
228 the power off period.

229

230 In our center all patients were advised not to deplete their IPG below 50% of its
231 capacity. More than 80% of our patients usually recharge when the remaining battery
232 capacity is about 50%. We also demonstrated in our study that patients in the highest
233 age group (70 years or older) did not necessarily have more difficulties than younger
234 ones, and they did not rate the recharging process as more difficult than younger ones;
235 while old age and bad functional status may be considered as factors against the use
236 of a rechargeable IPG. Inability to recharge the IPG could be annoying and might

237 have serious adverse consequences. In our study, most cases' problems were caused
238 by malfunctioning power banks that needed to be replaced. One patient reported that
239 the device was shut down unexpectedly without patient's awareness, and the program
240 controller was used to restart the IPG. Another case involved an elderly patient, whose
241 new caregiver failed to recharge the IPG when the original caregiver was replaced at
242 the nursing home.

243

244 Although we are not the first ones to report this patient collective, our cohort is—to
245 the best of our knowledge—the largest reported one by far. Timmermann et al.
246 ⁹reported a prospective patient satisfaction study of 21 patients with 14 of them
247 having initial implantation of r-IPGs over a three months follow-up. Unlike
248 Timmermann et al., in which patient selection of r-IPG implantation was determined
249 by clinical judgment of clinicians, our patients were offered a choice of r-IPG or nr-
250 IPG, as well as of international or domestic brand, after a comprehensive and detailed
251 explanation of each option. This study shares our finding that the amount of training
252 does not associate with a higher rate of satisfaction. Jakobs et al.⁵ reported a
253 retrospective cohort with a mean follow-up of 21.2 months (10.0 months, 5–41
254 months) , in which 3/35 patients felt not confident of using their IPG but majority of
255 the patients who felt not confident after their training session had only received a
256 single training session. In our study, 178 (92.7%) patients felt confident of using their
257 IPG, and we thought it is reasonable to have at least two training sessions with the
258 patients and care givers: one session before discharge and one session at one week
259 after discharge. The overall handling of the r-IPGs was reported as being “easy”,
260 which was similar to our results. The main point of critique was about putting on the
261 charging belt, which was more often negatively rated than charging the charger. As

262 this seems to represent one major issue for patients, the manufacturers should pay
263 special attention to improve and simplify the process of inductive recharging. Waln
264 and Jimenez-Shahed et al.¹⁰ reported patient satisfaction in a series of 31 patients of
265 which 12 received r-IPGs as their initial implants. Interestingly, these patients were
266 more satisfied with their IPGs compared with patients who previously had an nr-IPG
267 implanted. In our study, we didn't explore the satisfaction rates between multiple
268 products but found the therapy efficacy was the dominating factor of patients' general
269 satisfaction.

270

271 Cost effectiveness is a critical reason to choose IPG. Although the price for an r-IPG
272 is roughly twice as high as for an nr-IPG, the longevity of the implant may make it
273 more cost efficient over time. Rizzi et al. calculated savings of more than 223,000
274 EUR in a 149-patient cohort over almost eight years in a hypothetical scenario when
275 every patient had an r-IPG implanted instead of a non-rechargeable one¹¹. However,
276 reimbursement policies differ in different countries and cities. The choice of IPG may
277 not be in the hands of patients and physicians alone but also in the hands of insurance
278 agencies. Due to the various insurance policies in China, the cost effective
279 investigation is beyond the scope of this survey.

280

281 Our study has several limitations. First, this study was undertaken in a single
282 institution, so there might be inherent biases. Second, it is not a longitudinal study. We
283 are not able to identify when the patients had adverse events or how user confidence
284 and satisfaction developed over time. Third, although our study has a comparatively
285 long mean follow-up and large sample size, it remains to be seen what aspects may

286 come into play when r-IPGs are near the end of the recommended run-time of nine
287 years or more. Decreasing IPG capacities over time may result in shorter intervals
288 between recharges and longer recharging process. Our study results apply to all of the
289 three systems, which share the basic principles of recharging. We didn't find the
290 difference in usability, recharging times and complication in three manufacturers.

291

292 In conclusion, we found most patients were satisfied with their choices of IPG. The
293 patients' financial status and the product feature of remote programming were the two
294 most critical factors in their decision. The skill of using rechargeable IPG was easy to
295 be mastered by most patients.

296

297 **Funding**

298 This study was supported by the 2018 Shanghai Municipal Education Commission—
299 Gaoyuan Nursing Grant Support (Hlgy1804kyx).

300

301 **Acknowledgments**

302 We thank Ms. Kaile Zhang and Dr. Luciano Furlanetti for their kind support in this
303 study.

304

305

306 **References**

- 307 1. Kumar, N., Murgai, A. & Jog, M. Neurological Worsening After Implantable
308 Pulse Generator Replacement. *Can J Neurol Sci* (2019).
- 309 2. Niemann, M., Schneider, G.-H., Kühn, A., Vajkoczy, P. & Faust, K. Clinical
310 Efficacy of Bilateral Deep Brain Stimulation Does Not Change After Implantable
311 Pulse Generator Replacement but the Impedances Do: A Prospective Study.
312 *Neuromodulation* (2019).
- 313 3. Thrane, J. F., Sunde, N. A., Bergholt, B. & Rosendal, F. Increasing infection
314 rate in multiple implanted pulse generator changes in movement disorder patients
315 treated with deep brain stimulation. *Ster. Funct Neurosurg* (2014).
- 316 4. Hitti, F. L., Vaughan, K. A., Ramayya, A. G., McShane, B. J. & Baltuch, G. H.
317 Reduced long-term cost and increased patient satisfaction with rechargeable
318 implantable pulse generators for deep brain stimulation. *J Neurosurg* (2018).
- 319 5. Jakobs, M., Kloß, M., Unterberg, A. & Kiening, K. Rechargeable Internal
320 Pulse Generators as Initial Neurostimulators for Deep Brain Stimulation in Patients
321 With Movement Disorders. *Neuromodulation* (2018).
- 322 6. Okun, M. S. Tips for Choosing a Deep Brain Stimulation Device. *JAMA*
323 *Neurol.* **76**, 749–750 (2019).
- 324 7. Furlanetti, L. et al. Fixed-Life or Rechargeable Battery for Deep Brain
325 Stimulation: A Prospective Long-Term Study of Patient’s Preferences. *Ster. Funct*
326 *Neurosurg* (2020).

- 327 8. Khaleeq, T., Hasegawa, H., Samuel, M. & Ashkan, K. Fixed-Life or
328 Rechargeable Battery for Deep Brain Stimulation: Which Do Patients Prefer?
329 Neuromodulation (2019).
- 330 9. Timmermann, L. et al. A new rechargeable device for deep brain stimulation: a
331 prospective patient satisfaction survey. *Eur Neurol* (2013).
- 332 10. Waln, O. & Jimenez-Shahed, J. Rechargeable deep brain stimulation
333 implantable pulse generators in movement disorders: patient satisfaction and
334 conversion parameters. *Neuromodulation* (2014).
- 335 11. Rizzi, M. et al. Internal Pulse Generators in Deep Brain Stimulation:
336 Rechargeable or Not? *World Neurosurg.* **84**, 1020–1029 (2015).
- 337

338 **Figure legend**

339 **Figure 1. Patients' budgets for DBS surgery.** Budgets were divided into four levels
340 and indicated by different grayscales. Values were presented either in absolute patient
341 number (A) or in percentage (B). Abbreviation: r-IPG = rechargeable IPG (N = 192);
342 nr-IPG: non-rechargeable IPG (N = 28).

343

344 **Figure 2. Influencing factors for choices of rechargeable versus non-rechargeable**
345 **battery.** The degree of influence was divided into five levels and indicated by
346 different grayscales. Values were presented as percentage. (A) battery dimension; (B)
347 need for further surgeries to replace the battery; (C) need for recharging the battery;
348 (D) economic issue. Abbreviation: r-IPG = rechargeable IPG (N = 192); nr-IPG: non-
349 rechargeable IPG (N = 28).

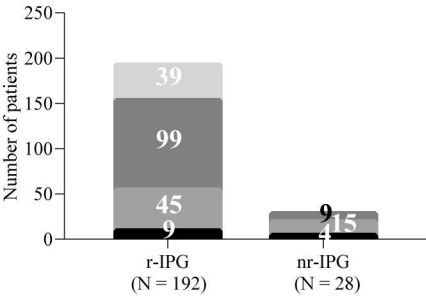
350

351 **Figure 3. Influencing factors for choices of international versus domestic**
352 **manufacturers in patients with rechargeable battery.** Values were presented as
353 percentage. (A) economic issue; (B) international reputation; (C) remote
354 programming feature; (D) clinician's advice. In current Chinese DBS marketing, the
355 international manufacturer refers to Medtronic (N = 136), and domestic manufacturers
356 refer to PINS and SceneRay (N = 56).

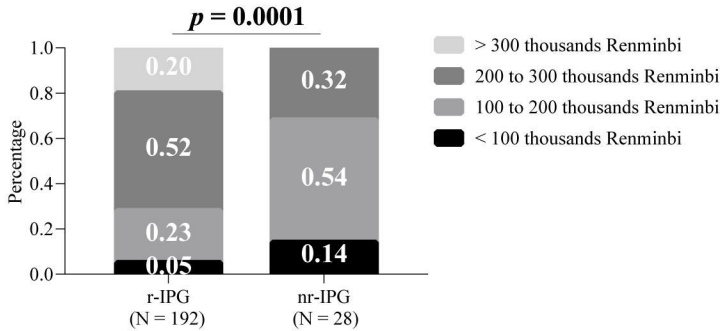
357

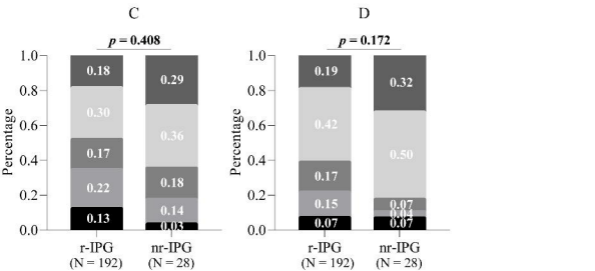
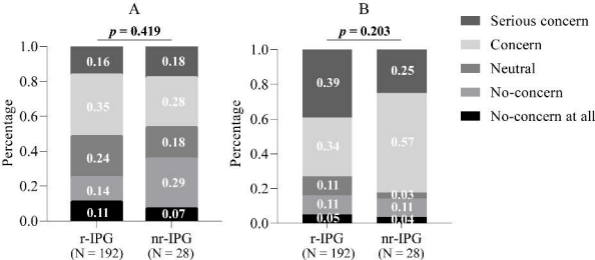
358 **Supplemental Figure 1. Size comparison between non-rechargeable (left column)**
359 **and rechargeable (right column) implantable pulse generators from three**
360 **manufacturers in China.** (A) – (B) Medtronic; (C) – (D) PINS; (E) – (F) SceneRay.

A



B





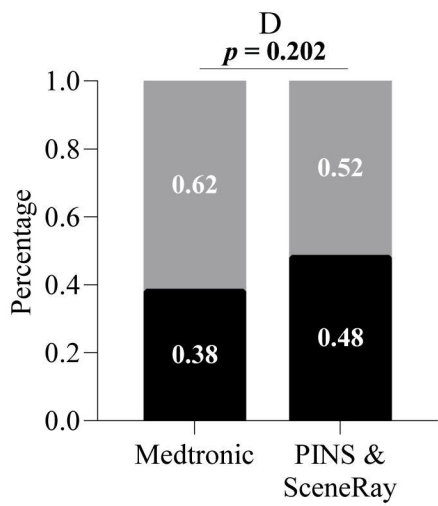
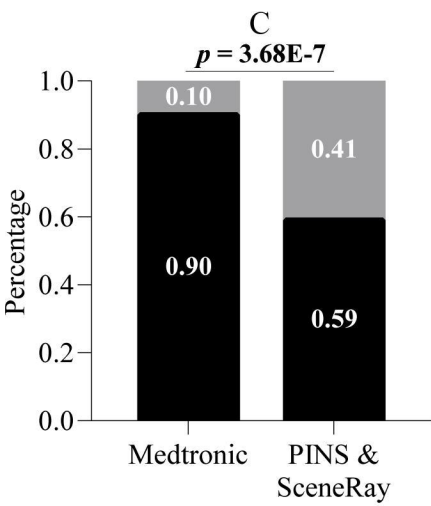
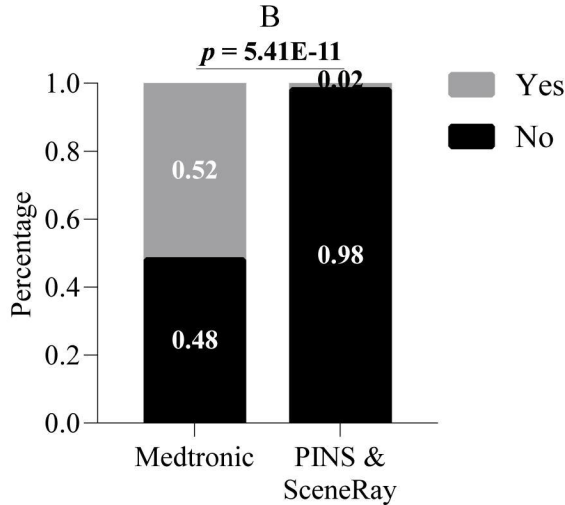
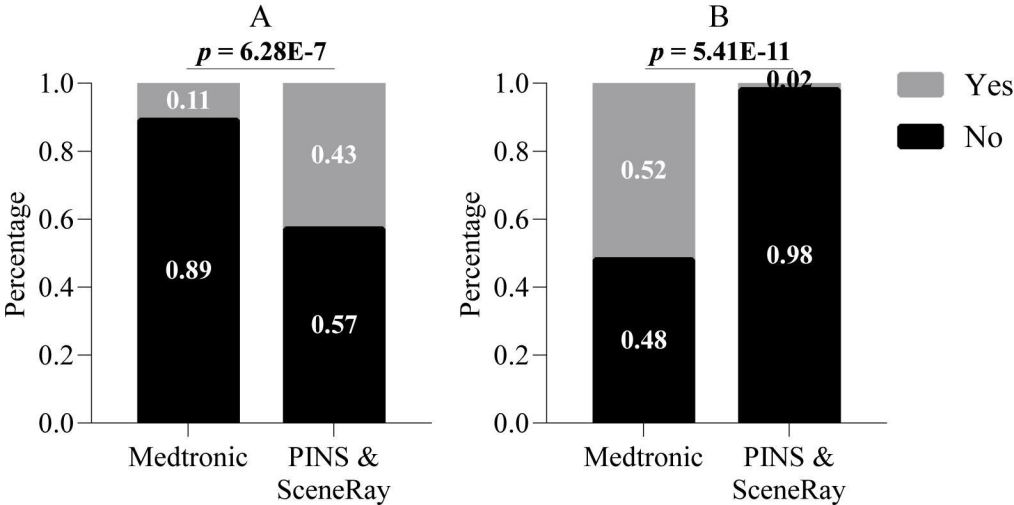


Table 1. Demographic data.

Characteristics	Total	r-IPG	nr-IPG
Gender			
Men	135	114	21
Women	85	78	7
Age, year (Mean \pm SD)	62.8 \pm 9.8	62.5 \pm 9.8	64.4 \pm 10.0
Follow-up, month (Median, IQR)	18 (8–36)	19 (9–38)	15.5 (5.25–26.5)
Manufacturer			
Medtronic	142	136	6
PINS & SceneRay	78	56	22

Table 2. Approaches to learn about deep brain stimulation. (N = 219)*

Approaches	Number (%)
Media (i.e., Web and television)	79 (36.1%)
Doctor's referrals	78 (35.6 %)
Word of mouth from patients	56 (25.6%)
Others	6 (2.7%)

*One missing data.

Table 3. Satisfaction rate.

Questions	Group	
	r-IPG	nr-IPG
	(N = 192)	(N = 28)
1. Are you still happy with your choice of your device?		
Yes	169 (88.0%)	24 (85.7%)
No	23 (12.0%)	4 (14.3%)
1.1. If not, please specify.		
The stimulating effects did not meet your expectation.	18 (9.4%)	4 (14.3%)
Others	5 (2.6%)	0
2. Would you choose the same type of your device today?		
Yes	178 (92.7%)	26 (92.9%)
No	14 (7.3%)	2 (7.1%)

1 **Table 4. Recharging process for patients with r-IPG. (N = 192)**

Questions	Number (%)
1. Do you feel confident using your r-IPG?	
No	14 (7.3%)
Yes	178 (92.7%)
1.1. If yes, how long did it take to feel confident?	
Within 1 week	78 (40.7%)
1–2 weeks	27 (14.1%)
2–4 weeks	8 (4.2%)
More than 4 weeks	65 (34.0%)
2. How frequently do you check battery capacity of your r-IPG?	
Everyday	35 (18.2%)
Every week	123 (64.1%)
Every 2 weeks	6 (3.1%)
Every 4 weeks	17 (8.9%)
Every year	11 (5.7%)
3. Have you ever forgotten to recharge your r-IPG?	
No	156 (81.3%)
Yes	36 (18.7%)
4. How frequently do you recharge your r-IPG?	
Everyday	49 (25.5%)
2–4 days	28 (14.6%)
5–7 days	115 (59.9%)
5. How frequently do you recharge your recharger?	

Everyday	15 (7.8%)
Every week	104 (54.2%)
Every 2 weeks	31 (16.1%)
Every 4 weeks	37 (19.3%)
Not fixed	5 (2.6%)
6. At what level of battery capacity do you usually recharge your r-IPG?	
75–100%	101 (52.6%)
75–50%	76 (39.6%)
< 50%	15 (7.8%)
Warning sign	0
7. How long does recharging usually take?	
Less than 15 min	9 (4.7%)
15–30 min	37 (19.3%)
30–45 min	35 (18.2%)
45–60 min	40 (20.8%)
More than 60 min	71 (37.0%)
8. Do you check and recharge your r-IPG yourself?	
No	55 (28.6%)
Yes	137 (71.4%)
9. Have you ever been unable to recharge your battery?	
No	176 (91.7%)
Yes	16 (8.3%)
9.1. if yes, could you solve the problem on your own?	
No	11 (68.9%)

Yes	5 (31.2%)
-----	-----------

2

1 **Table 5. Life with a rechargeable IPG. (N = 192)**

Questions	Number (%)
1. Have you ever travelled since your DBS surgery?	
No	141 (73.4%)
Yes	51 (26.6%)
1.1. If yes, have you ever recharged during the vacation?	
No	11 (21.6%)
Yes	40 (78.4%)
2. Do you continue to work after DBS surgery?	
No	170 (88.5%)
Yes	22 (11.5%)
2.1. If yes, have you ever recharged during the work?	
No	21 (95%)
Yes	1 (5%)
3. Are you ambulatory during recharging?	
No	178 (92.7%)
Yes	14 (7.3%)

2