

Mental Health Status of the General Population during the COVID-19 Pandemic: A Cross-Sectional National Survey in Japan

Michiko Ueda^{a*}, Andrew Stickley^{a, b}, Hajime Sueki^c, Tetsuya Matsubayashi^d

Abstract

The ongoing COVID-19 pandemic may have detrimental mental health consequences. However, as yet, there is limited understanding of its impact on the mental health of the general population. The aim of this study is to examine the mental health of the Japanese general population by conducting the first systematic survey during the pandemic (N=1,000), with a particular focus on identifying the most vulnerable groups. Results from logistic regression analyses showed that the mental health of young and middle-aged individuals was significantly worse than that of older individuals during the pandemic. There was also some indication that individuals who were not currently working were significantly more likely to report a high level of anxiety and depressive symptoms. Part-time and temporary contract-based workers were also more likely to suffer from anxiety disorder. Our results highlight that monitoring the mental health of younger and economically vulnerable individuals may be especially important. In addition, they also indicate that population mental health might not only be affected by the direct health consequences of COVID-19, but also by the economic ramifications of the pandemic.

Keywords: Anxiety disorders; Depression; Patient Health Questionnaire; Generalized Anxiety Disorder Scale; Employment status; General population.

1st version: April 28, 2020

2nd version: May 19, 2020 (typo in Table 1 fixed)

^a Faculty of Political Science and Economics, Waseda University, Building No.3 1-6-1 Nishiwaseda, Shinjuku-ku, Tokyo 169-8050, Japan

^b Department of Preventive Intervention for Psychiatric Disorders, National Institute of Mental Health, National Center of Neurology and Psychiatry, 4-1-1 Ogawahigashicho, Kodaira, Tokyo 187-8553, Japan

^c Department of Psychology and Education, Faculty of Human Sciences, Wako University, 2160 Kanai-machi, Machida, Tokyo, 195-8585, Japan

^d Osaka School of International Public Policy, Osaka University, 1-31 Machikaneyama, Toyonaka, Osaka, 560-0043, Japan

* Corresponding author: Michiko Ueda Faculty of Political Science and Economics, Waseda University, Building No.3 1-6-1 Nishiwaseda, Shinjuku-ku, Tokyo 169-8050, Japan mueda@waseda.jp
NOTE: This preprint reports new research that has not been certified by peer review and should not be used to guide clinical practice.
Tel: +81-3-3208-1176.

1. Introduction

In late December 2019 a novel coronavirus (COVID-19) was detected in the city of Wuhan, China. Rapid person-to-person transmission resulted in widespread infection inside Wuhan within weeks (Heymann et al., 2020). National and international travel subsequently facilitated the swift spread of the virus to Europe, North America, Asia and the Middle East, so much so, that there were more than 118,000 cases in 114 countries when the World Health Organization (WHO) characterized the COVID-19 situation as a pandemic on March 11, 2020 (Bedford et al., 2020; World Health Organization, 2020b). The rapid dissemination of the virus has also been accompanied by a large number of deaths in countries across the world, with individuals who are older and who have multiple comorbidities seemingly especially vulnerable to the disease (Onder et al., 2020; Ruan et al., 2020).

In the absence of a vaccine, and given the high degree of transmissibility and potential lethality of COVID-19, social and physical distancing including reducing/avoiding crowding, the closure of non-essential businesses/services, stay-at-home orders, protecting vulnerable groups and local/national movement restrictions have been the main public health measures adopted to mitigate the transmission/detrimental effects of the virus (World Health Organization, 2020a). Despite the potential benefits of such measures, it is also being increasingly recognized that they might also have both negative short- and long-term consequences for mental health (Galea et al., 2020) that are in addition to those resulting from the disease itself (Du et al., 2020). For example, a recent review article has shown that quarantine may be associated with a number of negative psychological outcomes such as anger and posttraumatic stress, with factors such as financial loss and the socioeconomic distress that can result from quarantine possibly underpinning the emergence of psychological disorders (Brooks et al., 2020).

Several factors suggest that a focus on mental health might be especially important in relation to the ongoing COVID-19 pandemic. First, studies on earlier global infectious disease outbreaks such as the severe acute respiratory syndrome (SARS) epidemic (2002-2004) and the Middle East respiratory syndrome occurrence (MERS; 2012-) have indicated that the spread of infectious disease is linked to worse mental health within and across populations (Jeong et al., 2016; Lau et al., 2005). Second, recent studies from China have similarly shown that COVID-19 may be important for mental health outcomes such as anxiety, depression and posttraumatic stress symptoms (Ahmed et al., 2020; Cao et al., 2020; Wang et al., 2020). Third, it is possible that COVID-19 may disproportionately affect vulnerable populations (Wang and Tang, 2020) with groups such as older adults, those with co-occurring illnesses, the socially excluded (e.g. the homeless) and individuals on low incomes all being at increased risk for poorer mental health (Holmes et al., 2020). Given the lack of evidence, determining who is vulnerable to the mental health consequences of COVID-19 is essential for the design and implementation of evidence-based interventions to mitigate the potential effects of COVID-19 on population mental health.

The current study will examine the effects of the COVID-19 pandemic on the mental health of a national sample of the Japanese population. The first case of COVID-19 was registered in Japan on January 16, 2020 in Kanagawa prefecture (Ministry of Health, Labor and Welfare, 2020a). Cases continued to grow against a backdrop of increasingly strong public health interventions including the temporary closure of schools and postponement of the forthcoming Olympics in March (Looi, 2020a). A sudden spike in the number of cases led to the declaration of a state of emergency on April 7 in seven major prefectures including Tokyo (Looi, 2020a). Following an upsurge in ‘untraceable’ new infections the state of emergency was expanded to cover the whole of Japan and thirteen prefectures were designated as “special alert areas” on April 16 (Looi, 2020b), which coincided with the start date of our study. Although there is no comprehensive data as yet, there is nevertheless some indication that these COVID-19-related events may be having a negative impact on population wellbeing in Japan. For example, the prospect of a possible forthcoming lockdown resulted in panic buying of food and other household products in Tokyo at the end of March (Reuters, 2020), while a recent international poll showed that 86% of the Japanese population were afraid of catching the virus which was a higher percentage than in other high-income countries such as the United States and United Kingdom where approximately 60% of the population expressed that they were scared of contracting COVID-19 (YouGov 2020). Importantly, it is also possible that these events may have had an especially damaging impact of some people’s economic situation, as the Japanese government announced that the economy is now ‘rapidly deteriorating’ for the first time since 2009 (Cabinet Office 2020).

Hence, the aim of this study was to extend COVID-19-related mental health research beyond China by determining the mental health status of the Japanese population during the pandemic with a particular focus on identifying the most vulnerable groups. In particular, we hypothesize that older adults may be especially at risk for poorer mental health given the higher COVID-19 mortality rates among those aged 70 and above, as well as economically vulnerable individuals due to the possible economic consequences of the COVID-19 pandemic.

2. Methods

We conducted an online survey of the Japanese population between April 16 and April 18, 2020. We delegated a commercial survey company, the Survey Research Center, to send out a set of screening questions to approximately 10,000 respondents from its commercial web panel and then to construct a sample of 1,000 respondents based on their demographic characteristics. The final sample comprised respondents who were representative of the Japanese general population in terms of the area of their residency, sex, and age distribution. The respondents in the final sample answered online questions about their mental health, personal economic situation, and preventive behavior regarding COVID-19, among others.

2.1 Ethics statement

This study was approved by the Ethics Committee of Osaka School of International Public Policy, Osaka University. The survey participants were informed of the purpose of the study prior to their participation in the survey and had the option to quit the survey at any time. The respondents provided explicit consent that the information they provided could be used for the purpose of this study. The data are completely anonymous.

2.2 Measures of mental health status

The Patient Health Questionnaire (PHQ-9) (Spitzer et al., 1999) was used to measure depressive symptoms. The PHQ-9 is a self-report questionnaire that asks about the nine items in the Major Depressive Disorder module in the Diagnostic and Statistical Manual of Mental Disorders. Based on the recommendation in DSM-5, past week symptoms were evaluated. The PHQ-9 was translated into Japanese through back translation. Prior studies have confirmed the reliability and validity of the Japanese version of this measure (Muramatsu et al., 2007; Inagaki et al., 2013). The sensitivity and specificity of the Japanese version PHQ-9 were 84% and 95%, respectively (Muramatsu et al., 2007). For each item, responses are rated on a 4-point scale from 0 (“Not at all”) to 3 (“Nearly every day”), with higher scores representing increased levels of depression (total score range 0–27). For the purpose of this study, we treated a score of 10 or above (“moderate”, “moderately severe”, and “severe” cases) as a case of depressive symptomatology (Levis et al. 2019). The Cronbach’s alpha value for the scale was 0.90.

The 7-item Generalized Anxiety Disorder Scale (GAD-7; Spitzer et al., 2006) was used to measure anxiety symptoms. The GAD-7 was developed as a self-administered questionnaire for the simple assessment of generalized anxiety disorder and consists of questions related to anxiety disorders in the PHQ. Participants were asked to choose from the following frequency options concerning how often they had been bothered by each of seven symptoms over the past 2 weeks: “Not at all”, on “Several days”, on “More than half the days” and “Nearly every day.” The GAD-7 was translated into Japanese through back translation (Muramatsu et al., 2009) with prior studies confirming the reliability and validity of the Japanese version (Ito et al, 2018; Muramatsu et al., 2009; Ohtsuki et al., 2010). The sensitivity and specificity of the Japanese version of GAD-7 were 88% and 82%, respectively (Muramatsu et al., 2009). For each item, responses are rated on a 4-point scale from 0 to 3, with higher scores representing increased levels of anxiety (total score range 0–21). In the subsequent analysis, we treated a score of 10 or higher (“moderate” and “severe” cases) as a case of anxiety disorder (Loewe et al. 2008). The scale had a good degree of internal reliability (Cronbach’s alpha = 0.92).

2.3 Demographic information

Information was collected on basic demographic factors – sex and age. For the age variable, three categories were created; (1) age 18-39 years (young age); (2) age 40-59 years (middle age); (3) 60 years and above (older age). We also included other demographic information on sex and educational attainment, by creating a dummy variable for “male” and “college-educated”. The prefectural area of residency was captured by a dummy variable that took a value of one for individuals who resided in the thirteen prefectures that were designated as “special alert areas” on April 16. There were more confirmed cases of COVID-19 in the special alert areas.

2.4 Employment status, household income, and household financial situation

To capture the potentially varying effects of the worsening economy and job prospects, we categorized the respondents’ employment status into five mutually exclusive categories: (1) employed as a permanent employee; (2) employed as a short-term contractor, part-time or dispatch worker; (3) self-employed; (4) currently not working but in the labor force; and (5) not in the labor force. Those in the fourth category were either looking for a job, had being laid off, or were taking time off from work (i.e. they were still economically active). The fifth category included homemakers, students, and retired individuals (who were economically inactive). We used the fifth category as the baseline in the subsequent analysis as these individuals are less likely to be affected by the economic consequences of the pandemic.

Respondent’s current financial situation was assessed by asking them how they would rate their household’s current financial situation compared to one year ago. Those who answered, “somewhat worse” or “severely worse” were categorized as being “Financially worse off”. This was included in the analysis as a dummy variable.

The household income level of the respondents was also included in the analysis. This was divided into four categories based on annual household income in 2019; (1) less than 4 million yen; (2) equal to or greater than 4 million yen and less than 8 million yen; (3) equal to or greater than 8 million yen; (4) no information. The last category captures respondents who refused to answer or who did not know their annual household income. As this final category included a large number of respondents (N=175, 17.5%), we created a dummy variable that included these respondents and included it in the analysis in order to maximize statistical power. On April 16, 1 JPY=0.009255 USD.

2.5 Data Analysis

We first calculated the prevalence of anxiety and depressive symptoms for each of the demographic and economic groups. Then logistic regression models were estimated with either the GAD-7 or PHQ-

9 categories as the outcome, and all the respondents' characteristics as the regressors. In each fully adjusted model, we included the respondent's sex (reference category: female), educational attainment (reference: not college-educated), income level (four categories, reference: 8 million yen and higher), household financial situation (reference: economically not worse off) employment status and type of employment (five categories, reference: not in the labor force), and the area of residency (baseline: not in the special alert area). The results are depicted graphically as odds ratios (OR), with the horizontal bars representing 95% confidence intervals (CI). The standard errors were heteroskedasticity-robust, and clustered by prefecture. The analysis was conducted using STATA/MP (version 16, Stata Corporation, College Station, TX). The level of statistical significance was set at $p < 0.05$ (two-tailed).

3. Results

Descriptive statistics of the sample characteristics and stratified by the mental health variables are presented in Table 1. Just under half of the respondents were male (49.6%). Almost half (44.0%) of the participants were college-educated, 36.0% were permanent employees, 9.7% were part-time or temporary workers, while 7.1% were not in employment but in the labor force. Sixty-five percent of the respondents resided in one of the "special alert areas".

3.1 PHQ-9

Among the 1,000 respondents, 18.1% were at or above the cutoff point of 10 for the PHQ-9 indicating the presence of depressive symptoms. The overall mean score on the PHQ-9 was 5.32 (S.D. = 5.64). Based on their PHQ-9 scores, 56.9% of individuals were categorized as having "no" depressive symptoms (PHQ-9 score: 0-4), 25.0% had "mild" symptoms (5-9), 10.0% had "moderate" symptoms (10-14), 5.2% had "moderately severe" symptoms (15-19), while 2.9% had "severe" symptoms (20-27).

When stratified by age group 24.2% and 22.7% of those aged 18-39 and 40-59 years were shown to be at least moderately depressed in terms of their PHQ-9 score, respectively, while the corresponding figure for those aged 60 and above was 7.7% (Table 1).

The prevalence of depressive symptoms was higher among individuals with a lower level of household income; 22.8% of those with a household income of less than 4 million yen (N=319) were categorized as being at least moderately depressed, with this figure falling to 13.7% for individuals whose annual household income was ≥ 8 million yen (N=168). Almost 35% of individuals who felt that their financial situation had deteriorated in the past year (N=226) had depressive symptoms, while 13.4% of those who had a better subjective assessment of their own financial situation were either moderately or severely depressed.

For employment status, the prevalence of depressive symptoms was highest among those who were unemployed, had been laid off, or who were taking time off work (N=71) at 32.4%. The lowest

figure was observed among the self-employed (8.51%; N=47). The prevalence of depression among permanent employees (N=360), part-time workers (N=97), and those in the labor force (N=425) was 20.8%, 20.6%, and 13.9%, respectively.

[Table 1]

3.2 GAD-7

As for general anxiety disorder, 114/1000 (11.4%) individuals had a GAD-7 score ≥ 10 . The mean score was 3.89 (S.D. = 4.66). In terms of symptomatology, six-hundred and sixty-eight (66.8%) individuals had “none” (GAD-7 score: 0-4), while 218 (21.8%) had “mild” (5-9), 71 (7.1%) had “moderate” (10-14), and 43 (4.3%) had “severe” (15-21) anxiety symptoms.

The GAD subgroup prevalence patterns were similar to those of the PHQ-9. Age-stratified data showed that 14.6%, 15.5%, and 4.15% of young, middle-aged, and older adults had anxiety symptoms, respectively. By income group, 13.8%, 10.1%, and 7.73% of high-, middle-, and low-income individuals were classified as having GAD. Twenty-three percent of individuals whose financial situation had got worse in the past year had GAD, and 8% of those who responded that they were not economically worse off had at least moderate anxiety symptoms.

The prevalence of GAD was also comparatively high for those who were unemployed, and on leave (28.2%) and for workers who were employed as part-time or short-term contract workers (16.5%) compared to those not in the labor force (8.0%). Almost 12% of permanent workers had anxiety symptoms.

3.3 Logistic Regression analysis

In fully adjusted models the odds for at least moderate depressive symptoms were 3.985 (95% CI: 2.232 - 7.114) and 3.393 (95% CI: 1.880 - 6.124) times higher for young and middle-aged respondents, respectively, compared to older respondents (Figure 1). Young (OR: 4.617, 95% CI: 2.318 - 9.199) and middle-aged adults (OR: 4.350, 95% CI: 2.233 - 8.477) also had significantly higher odds for reporting anxiety symptoms compared to their older counterparts (Figure 2).

Those who were unemployed, had been laid off, or who were taking time off work were 2.952 (95% CI: 1.501 - 5.803) times more likely to have moderate or severe forms of depression compared to those who were not in the labor force, such as retirees and housekeepers. They also had 1.960 (95% CI: 1.123 - 3.422) times higher odds for anxiety symptoms. Individuals with an unstable job (i.e. part-time/temporary workers) had a higher risk of anxiety symptoms (OR: 2.016, 95% CI: 1.021 - 3.978). The odds ratios for permanent workers for depression were higher but not statistically different from those not in the labor force.

Respondents who felt that they were financially worse-off compared to a year ago had 3.048 (95% CI: 1.959 - 4.742) and 3.230 (95% CI: 2.296 - 4.545) times higher odds for anxiety and depressive symptoms, respectively, compared to those whose financial situation had not deteriorated. Differences in respondents' income level, sex, and area of residency (whether or not they lived in a special alert area) were not associated with either the prevalence of anxiety or depressive symptoms.

[Figure 1 and Figure 2]

4. Discussion

The present study examined the mental health status of the general population in Japan using an online survey with a sample of 1,000 individuals that approximated the demographic characteristics of the whole population. To the best of our knowledge, this study constitutes the first investigation of the prevalence of anxiety and depressive symptoms in Japan during the COVID-19 pandemic using a representative sample in terms of age, sex, and regional distribution.

Results indicated that the overall mental health condition of people in Japan may have deteriorated compared to in the pre-COVID-19 period. Specifically, according to Hoshino et al. (2018), as of 2013, 8% of the general population in Japan (N= 3,753) had a PHQ-9 score of 10 or higher. This compares to 18.1% of respondents in the current study. It should be noted that the number of confirmed cases and deaths from COVID-19 is still relatively low in Japan at the time of writing this manuscript, compared to other affected countries; As of April 27, 2020, there were 360 deaths attributed to COVID-19, which corresponds to 2.8 per one million persons. For comparison, the number of confirmed deaths per one million population in the United States was 164.3 (Johns Hopkins University, 2020).

The findings of our study suggest that the mental health condition of some segments of the Japanese population may be particularly vulnerable during the ongoing COVID-19 crisis. In particular, individuals who were not currently working were more likely to report a high level of anxiety and depressive symptoms. Our results also indicate that the form of employment might also be important for mental health; Individuals who are employed as part-time or temporary contract-based workers were twice as likely to suffer from anxiety disorder compared to the reference group. The finding that non-/precarious employment may be linked to poorer mental health accords with the finding of a recent study of 369 adults in 64 cities in China where stopping work during the COVID-19 crisis was associated with worse mental health (Zhang et al., 2020).

These results are consistent with the notion that the effects of a faltering economy and reduction in business activities caused by COVID-19 are first and foremost likely to detrimentally affect workers without stable employment; When various non-essential businesses were closed following the state of emergency declaration, many part-time workers immediately lost their source of income. Moreover, for those who were seeking employment, their prospects of finding a job have now diminished greatly as

the number of job listings has declined (Cabinet Office 2020). Thus, it is possible that the socioeconomic stresses and strains that are emerging as a result of the ongoing pandemic might be impacting especially hard on these precarious workers and jobseekers in terms of poorer mental health.

Similarly, individuals who felt that their financial position has deteriorated in the past year had approximately three times greater odds for depression and anxiety disorder. As we controlled for the effect of income level on mental health in the analyses, it suggests that these results cannot be entirely explained by the differences in income levels. Although it is uncertain what underlies this specific finding, taken together with the results relating to employment status, it suggests that individuals who are economically vulnerable might be especially susceptible to experiencing poorer mental health during the COVID-19 pandemic, especially if the economic effects of the crisis are protracted.

It is important to note however, that the mental health condition of other employment status groups may have also deteriorated compared to in the pre-COVID-19 period. Specially, earlier research undertaken in Japan in 2013, showed that 5.84% of full-time workers in the general population could be classified as being depressed based on a PHQ9 cutoff score ≥ 10 . In contrast, 20.83% of permanent employees in our study met the same criterion (Table 1). In addition, the prevalence of depression among homemakers, retirees, and students (the reference group in our study) was reported to be 8.25% in 2013 whereas 13.88% reported depressive symptoms in the current study. Thus, there was a 14.99 points difference for full-time workers and a 5.63 points difference for those not in the labor force. This suggests that the mental health conditions of all workers (both economically active and inactive) should be closely monitored during and following the current crisis, as the negative economic shocks associated with COVID-19 might affect all employment status categories.

Contrary to our hypothesis, we found strong evidence that the mental health of young and middle-aged individuals may be significantly worse than that of older individuals during the pandemic. To date, studies from China have produced mixed findings concerning the mental health of different age groups during the COVID-19 crisis (Huang and Zhao, 2020; Tian et al., 2020; Wang et al., 2020). It is not immediately obvious as to why the mental health of the elderly population is significantly better than that of younger individuals. As elsewhere in the world, they are by far the highest-risk group for death and complications by COVID-19. For example, out of 348 deaths due to COVID-19 in Japan as of April 26, 2020, 228 (66%) were among persons aged 60 and above (Ministry of Health, Labor and Welfare 2020b). In addition, in the abovementioned study by Hoshino et al. (2018), the elderly population (aged ≥ 65) had a higher prevalence of depression compared to those who were young and middle-aged.

Although more work needs to be done to understand the impact of COVID-19 on different age groups, it can be speculated that the crisis might be presenting a much greater range of difficulties for younger, rather than older age groups. For example, besides financial worries, it is also possible that COVID-19 may currently be giving rise to other stressors in younger age groups that might also impact on mental health – such as the need for parents to both telework from home while at the same time

homeschool their children. Support for this notion of a greater number/different range of stressors in younger age groups comes from a recent study from China which linked worse mental health in those aged 12-21 years with education difficulties arising from both school closures and exam uncertainties (Wang et al., 2020). Alternatively, it is possible that other factors might be important in this context. An earlier study found for example, that older adults were more psychologically resilient than their younger counterparts (Gooding et al., 2012) which might be important when it comes to dealing with the stresses associated with the COVID-19 pandemic.

This study has several strengths. It is the first study to examine the effects of the COVID-19 pandemic on mental health in Japan. While doing this we were able to draw on data from a large population-based sample. Moreover, we were also able to examine different mental health outcomes. Despite this, our study also has several limitations that should be mentioned. First, our survey was undertaken among respondents from a commercial web panel and thus did not guarantee that the sample would be perfectly representative of the entire population. Although being able to conduct the survey while using random sampling methodology would have been preferable, it was not appropriate in this particular instance as it would not have allowed us to collect data in a timely manner – which was essential given the urgent need to understand how COVID-19 is affecting population well-being. Second, our study is cross-sectional, and thus cannot establish a causal relationship between the pandemic and mental health conditions. In particular, those who are in an economically weak position are likely to be vulnerable to poorer mental health even during non-crisis times (Suzuki et al., 2018), and our study could not prove that their mental health was poorer because of any major economic upheaval associated with COVID-19. However, the main purpose of this study was not to establish causality; its focus was rather on identifying the most vulnerable groups during the initial stage of the pandemic in Japan by undertaking the first systematic research on the mental health of the Japanese population during this period. We are planning to conduct a series of similar surveys in the following months that should further elucidate the effects of COVID-19 on population mental health. Third, our analysis did not consider the potential effects of marital status on mental health. However, we also included household type (e.g. one-person households) in the analysis, and confirmed that the inclusion of this variable did not change any of the results substantively.

Despite these limitations, our study contributes to the literature by identifying the most vulnerable population groups during the COVID-19 crisis through the first systematic survey of the mental health of the Japanese general population. Our results highlight that monitoring the mental health of younger and economically vulnerable individuals may be especially important moving forward. In addition, they also indicate that the general public's mental health during the pandemic might not only be affected by the direct health consequences of COVID-19, but also by the economic ramifications of the pandemic.

The results of the present study also have important policy implications. Given the potentially devastating impact of the pandemic on the economy, not just in Japan, but in countries across the world,

policymakers should provide financial aid to those affected by the economic consequences of the pandemic. In connection with this, the Japanese government had initially planned to distribute a cash benefit of 300,000 yen to each household provided that the head of the household had lost a significant portion of their income, but then changed the planned policy in mid-April so that all residents in Japan would receive 100,000 yen per person (Kyodo News 2020). While funds are expected to reach residents faster under the current universal policy, many small-sized households that have been economically affected will receive less money than they would have done under the previous policy. This suggests that the government should employ both universal and targeted policies so that the needs of the most economically vulnerable are met during this unprecedented crisis.

References

- Ahmed, M.Z., Ahmed, O., Aibao, Z., Hanbin, S., Siyu, L. & Ahmad, A. 2020. Epidemic of COVID-19 in China and associated Psychological Problems. *Asian J Psychiatr*, 51, 102092.
- Bedford, J., Enria, D., Giesecke, J., Heymann, D.L., Ihekweazu, C., Kobinger, G., Lane, H.C., Memish, Z., Oh, M., Sall, A.A., Schuchat, A., Ungchusak, K., Wieler, L.H. & WHO Strategic and Technical Advisory Group for Infectious Hazards. 2020. COVID-19: towards controlling of a pandemic, *Lancet*, 395 (10229), 1015-1018.
- Brooks, S.K., Webster, R.K., Smith, L.E., Woodland, L., Wessely, S., Greenberg, N. & Rubin, G.J. 2020. The psychological impact of quarantine and how to reduce it: rapid review of the evidence. *Lancet*, 395 (10227), 912-920.
- Cao, W., Fang, Z., Hou, G., Han, M., Xu, X., Dong, J. & Zheng, J. 2020. The psychological impact of the COVID-19 epidemic on college students in China. *Psychiatry Res*, 287.
- Doi, S., Ito, M., Takebayashi, Y., Muramatsu, K. & Horikoshi, M. 2018. Factorial Validity and Invariance of the 7-Item Generalized Anxiety Disorder Scale (GAD-7) Among Populations with and Without Self-Reported Psychiatric Diagnostic Status. *Frontiers in Psychology*, 9, 1741.
- Du, J., Dong, L., Wang, T., Yuan, C., Fu, R., Zhang, L., Liu, B., Zhang, M., Yin, Y., Qin, J., Bouey, J., Zhao, M. & Li, X. 2020. Psychological symptoms among frontline healthcare workers during COVID-19 outbreak in Wuhan. *General hospital psychiatry*.
- Galea, S., Merchant, R.M., Lurie, N. & Galea, S. 2020. The Mental Health Consequences of COVID-19 and Physical Distancing: The Need for Prevention and Early Intervention. *JAMA Intern Med*
- Gooding, P.A., Hurst, A., Johnson, J. & Tarrrier, N. 2012. Psychological resilience in young and older adults, *International journal of geriatric psychiatry*, 27 (3), 262-270.
- Heymann, D.L., Shindo, N. & WHO Scientific and Technical Advisory Group for Infectious Hazards 2020. COVID-19: what is next for public health? *Lancet*, 395 (10224) 542-545.
- Holmes, E.A., O'Connor, R.C., Perry, V.H., Tracey, I., Wessely, S., Arseneault, L., Ballard, C., Christensen, H., Cohen Silver, R., Everall, I., Ford, T., John, A., Kabir, T., King, K., Madan, I., Michie, S., Przybylski, A.K., Shafran, R., Sweeney, A., Worthman, C.M., Yardley, L., Cowan, K., Cope, C., Hotopf, M. & Bullmore, E. 2020. Multidisciplinary research priorities for the COVID-19 pandemic: a call for action for mental health science. *Lancet Psychiatry*.
- Hoshino, E., Ohde, S., Rahman, M., Takahashi, O., Fukui, T. & Deshpande, G.A. 2018. Variation in somatic symptoms by patient health questionnaire-9 depression scores in a representative Japanese sample. *BMC Public Health*, 18, 1.
- Huang, Y. & Zhao, N. 2020. Mental health burden for the public affected by the COVID-19 outbreak in China: Who will be the high-risk group? *Psychol Health Med*, 1-12.
- Inagaki, M., Ohtsuki, T., Yonemoto, N., Kawashima, Y., Saitoh, A., Oikawa, Y., Kurosawa, M., Muramatsu, K., Furukawa, T.A. & Yamada, M. 2013. Validity of the Patient Health Questionnaire (PHQ)-9 and PHQ-2 in general internal medicine primary care at a Japanese rural hospital: a cross-sectional study, *General hospital psychiatry*. 35 (6).
- Japanese Cabinet Office. 2020. Monthly economic report [Getsurei Keizai Houkoku]. April 2020.

- Jeong, H., Yim, H.W., Song, Y., Ki, M., Min, J., Cho, J. & Chae, J. 2016. Mental health status of people isolated due to Middle East Respiratory Syndrome. *Epidemiol Health*, 38, e2016048.
- John Hopkins University and Hospital. 2020. Coronavirus: Mortality Analyses. <https://coronavirus.jhu.edu/data/mortality> (accessed April 27th, 2020)
- Kyodo News. 2020. Japan gov't submits extra budget for virus rescue package. <https://english.kyodonews.net/news/2020/04/d5dc370949db-japan-govt-submits-extra-budget-for-virus-rescue-package.html> (accessed 27th April 2020)
- Lau, J.T.F., Yang, X., Pang, E., Tsui, H.Y., Wong, E. & Wing, Y.K. 2005. SARS-related perceptions in Hong Kong. *Emerg Infect Dis*, 11 (3), 417.
- Levis, B., Benedetti, A., Thombs, B.D., Riehm, K.E., Saadat, N., Levis, A.W., Azar, M., Rice, D.B., Chiovitti, M.J., Sanchez, T.A., Boruff, J., Cuijpers, P., Gilbody, S., Ioannidis, J.P.A., Kloda, L.A., Mcmillan, D., Patten, S.B., Shrier, I., Ziegelstein, R.C., Akena, D.H., Arroll, B., Ayalon, L., Baradaran, H.R., Baron, M., Bombardier, C.H., Butterworth, P., Carter, G., Chagas, M.H., Chan, J.C.N., Clover, K., Conwell, Y., de Man-van Ginkel, J.,M., Delgadillo, J., Fann, J.R., Fischer, F.H., Fung, D., Gelaye, B., Goodyear-Smith, F., Greeno, C.G., Hall, B.J., Hambridge, J., Harrison, P.A., Härter, M., Hegerl, U., Hides, L., Hobfoll, S.E., Hudson, M., Inagaki, M., Ismail, K., Jetté, N., Khamseh, M.E., Kiely, K.M., Kwan, Y., Liu, S., Lotrakul, M., Loureiro, S.R., Löwe, B., Marsh, L., Mcguire, A., Mohd Sidik, S., Munhoz, T.N., Muramatsu, K., Osório, F.,L., Patel, V., Pence, B.W., Persoons, P., Picardi, A., Reuter, K., Rooney, A.G., Santos, I.S., Shaaban, J., Sidebottom, A., Simning, A., Stafford, L., Sung, S.C., Tan, P.L.L., Turner, A., van Der Feltz-Cornelis, C.,M., van Weert, H.,C., Vöhringer, P.,A., White, J., Whooley, M.A., Winkley, K., Yamada, M. & Zhang, Y. 2019. Accuracy of Patient Health Questionnaire-9 (PHQ-9) for screening to detect major depression: individual participant data meta-analysis. *BMJ*, 365.
- Looi, M. 2020a. COVID-19: Japan declares state of emergency as Tokyo cases soar. *BMJ*, 369, m1447.
- Looi, M. 2020b. COVID-19: Japan prepares to extend state of emergency nationwide as "untraceable" cases soar. *BMJ*, 369, m1543.
- Löwe, Y., Bernd, Decker, Y., Oliver, Müller, Y., Stefanie, Brähler, Y., Elmar, Schellberg, Y., Dieter, Herzog, Y., Wolfgang & Herzberg, Y., Philipp. 2008. Validation and Standardization of the Generalized Anxiety Disorder Screener (GAD-7) in the General Population, *Medical care*, 46 (3), 266-274.
- Ministry of Health, Labor and Welfare (MHLW). 2020a. On the first case related to the novel Coronavirus [Shingata corona-uirusu ni kanren shita hai-en no kan-ja no hassei ni tsuite (1-rei me)]. January 16 2020. https://www.mhlw.go.jp/stf/newpage_08906.html (accessed April 27, 2020)
- Ministry of Health, Labor and Welfare (MHLW). 2020b. The current status on the novel Coronavirus (as of April 26, 2020) [Shin-gata corona-uirusu kansen-shou no genzai no joukyou ni tsuite (reiwa 2-nen 4-gatsu 26-nichiban)]. April 26 2020. https://www.mhlw.go.jp/stf/newpage_11048.html (accessed April 27, 2020)
- Muramatsu, K., Muramatsu, Y., Miyaoka, H., Fuse, K., Yoshimine Fi, H. M., Katagiri, A., & Kutsumi, R. 2009. Validation and utility of a Japanese version of the GAD-7. *PANMINERVA MEDICA 20th World Congress on Psychosomatic Medicine Abstracts Book (Vol. 51, No. Suppl 1 to No 3, p. 79)*.

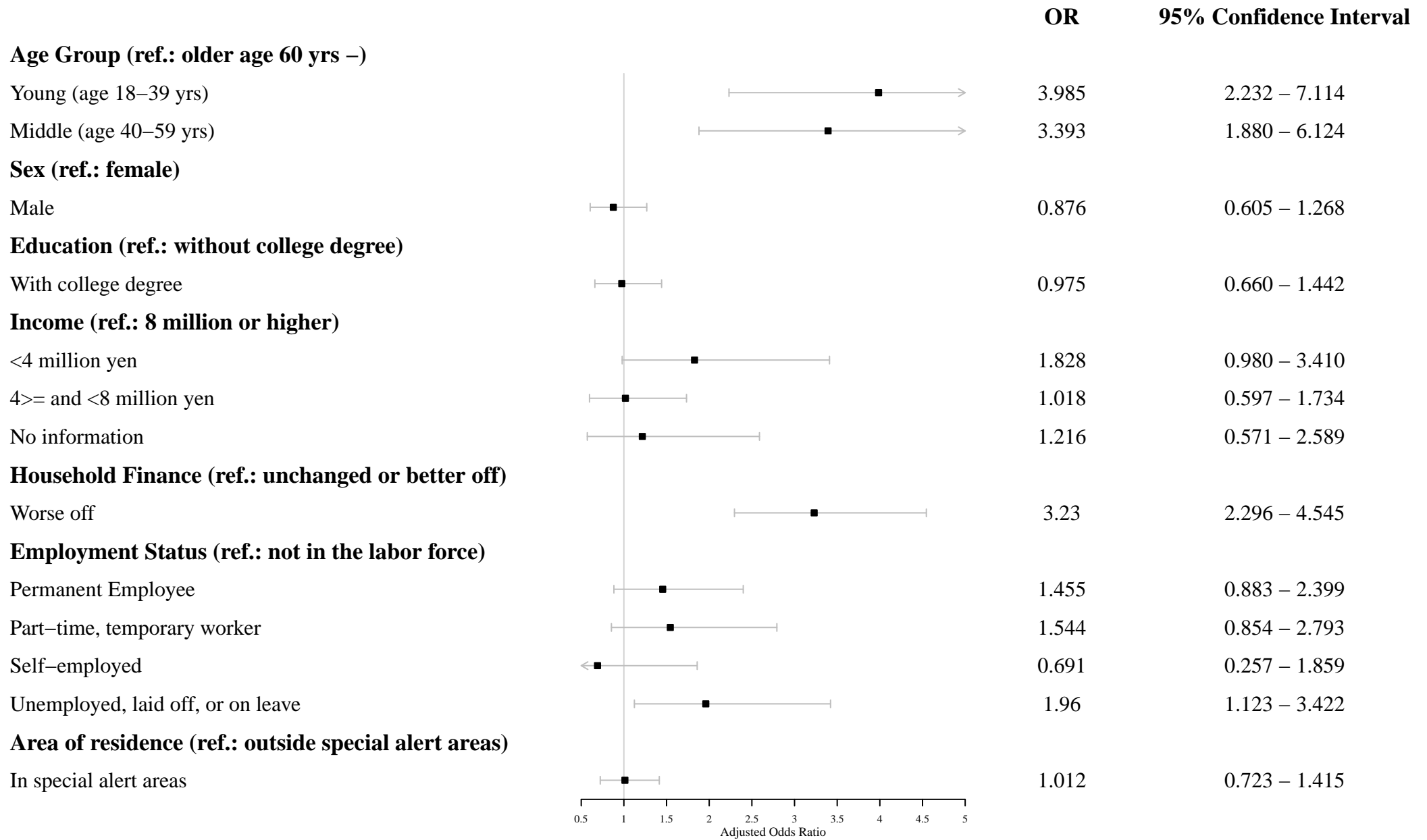
- Muramatsu, K., Kamijima, K., Yoshida, M., Otsubo, T., Miyaoka, H., Muramatsu, Y. & Gejyo, F. 2007. The Patient Health Questionnaire, Japanese Version: Validity According to the Mini-International Neuropsychiatric Interview–Plus. *Psychological reports*, 101 (3) 952-960.
- Ohtsuki, T., Inagaki, M., Oikawa, Y., Saitoh, A., Kurosawa, M., Muramatsu, K. & Yamada, M. 2010. Multiple barriers against successful care provision for depressed patients in general internal medicine in a Japanese rural hospital: a cross-sectional study. *BMC Psychiatry*, 10 (1), 30.
- Onder, G., Rezza, G. & Brusaferro, S. 2020. Case-Fatality Rate and Characteristics of Patients Dying in Relation to COVID-19 in Italy. *JAMA*.
- Reuters., 2020, Panic-buying in Tokyo as residents asked to hunker down for weekend. Reuters, 27 March: <https://www.reuters.com/article/health-coronavirus-japan/panic-buying-in-tokyo-as-residents-asked-to-hunker-down-for-weekend-idUSL4N2BK07X> (accessed April 15, 2020)
- Ruan, Q., Yang, K., Wang, W., Jiang, L. & Song, J. 2020. Clinical predictors of mortality due to COVID-19 based on an analysis of data of 150 patients from Wuhan, China. *Intensive Care Med*.
- Spitzer, R.L., Kroenke, K., Williams, J.B.W. & and the Patient Health Questionnaire Primary Care Study Group. 1999. Validation and Utility of a Self-report Version of PRIME-MD: The PHQ Primary Care Study. *JAMA*, 282 (18) 1737-1744.
- Spitzer, R.L., Kroenke, K., Williams, J.B.W. & Löwe, B. 2006. A Brief Measure for Assessing Generalized Anxiety Disorder: The GAD-7. *Archives of Internal Medicine*, 166 (10) 1092-1097.
- Suzuki, M., Furihata, R., Konno, C., Kaneita, Y., Ohida, T. & Uchiyama, M. 2018. Stressful events and coping strategies associated with symptoms of depression: A Japanese general population survey. *J Affect Disord*, 238, 482-488.
- Tian, F., Li, H., Tian, S., Yang, J., Shao, J. & Tian, C. 2020. Psychological symptoms of ordinary Chinese citizens based on SCL-90 during the level I emergency response to COVID-19. *Psychiatry Res*, 288, 112992.
- Wang, C., Pan, R., Wan, X., Tan, Y., Xu, L., McIntyre, R.S., Choo, F.N., Tran, B., Ho, R., Sharma, V.K. & Ho, C. 2020. A longitudinal study on the mental health of general population during the COVID-19 epidemic in China. *Brain Behav Immun*, S0889-1591(20) 30511-0.
- Wang, Z. & Tang, K. 2020. Combating COVID-19: health equity matters. *Nat Med*, 26 (4), 458-458.
- World Health Organization (WHO) .2020a. Coronavirus disease 2019 (COVID-19) Situation Report - 72. https://www.who.int/docs/default-source/coronaviruse/situation-reports/20200401-sitrep-72-covid-19.pdf?sfvrsn=3dd8971b_2 (Accessed April 25, 2020)
- World Health Organization (WHO). 2020b. WHO Director-General's opening remarks at the media briefing on COVID- 19 - 11 March 2020. <https://www.who.int/dg/speeches/detail/who-director-general-s-opening-remarks-at-the-media-briefing-on-covid-19---11-march-2020> (Accessed April 25, 2020)
- YouGov. 2020.YouGov international COVID-19 tracker. <https://today.yougov.com/topics/international/articles-reports/2020/03/17/YouGov-international-COVID-19-tracker> (accessed April 27, 2020)

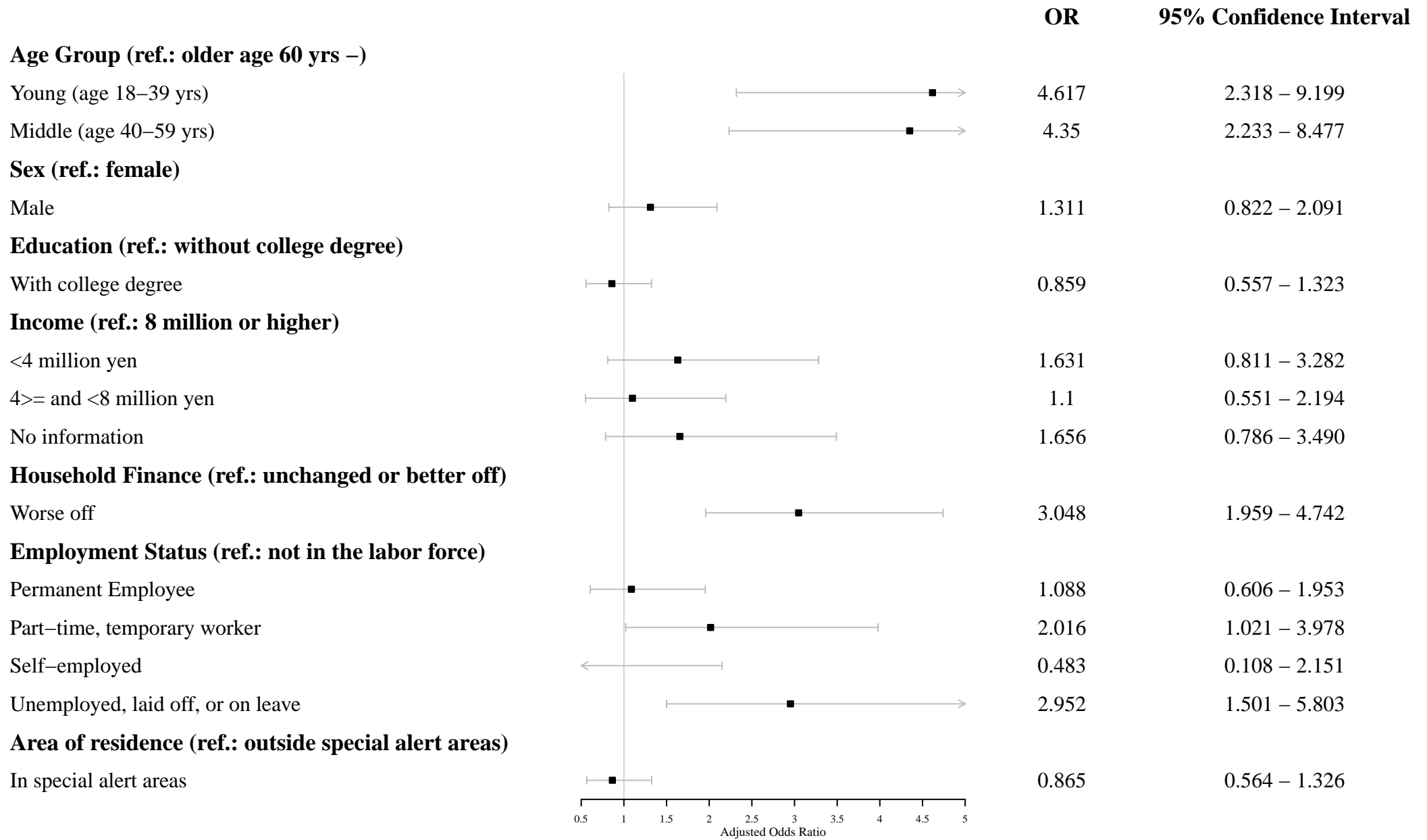
Zhang, S.X., Wang, Y., Rauch, A. & Wei, F. 2020. Unprecedented disruption of lives and work: Health, distress and life satisfaction of working adults in China one month into the COVID-19 outbreak. *Psychiatry Res*, 288, 112958.

Table 1 Descriptive statistics and the prevalence of depressive and anxiety symptoms

		% in the sample	% PHQ-9 \geq 10	% GAD-7 \geq 10
All			18.1	11.4
Age	Young (age 18-39 yrs)	30.2	24.2	14.6
	Middle (age 40-59 yrs)	36.1	22.7	15.5
	Older (age 60 yrs and above)	33.7	7.7	4.2
Sex	Female	50.4	18.8	10.9
	Male	49.6	17.3	11.9
Education	Without college degree	56.0	17.9	11.6
	With college degree	44.0	18.4	11.1
Income	<4 million yen	31.9	22.9	13.8
	4 \geq and <8 million yen	33.8	16.3	10.1
	8 million yen or higher	16.8	13.7	7.7
	No information	17.5	17.1	13.1
Household Finance	Unchanged or better off	77.4	13.4	8.0
	Worse off	22.6	34.1	23.0
Employment	Permanent Employee	36.0	20.8	11.7
	Part-time, temporary worker	9.7	20.6	16.5
	Self-employed	4.7	8.5	4.3
	Unemployed, laid off, or on leave	7.1	32.4	28.2
Area of Residence	Not in the labor force	42.5	13.9	8.0
	Outside special alert area	35.0	18.3	12.3
	In special alert area	65.0	18.0	10.9

Note: $n = 1,000$. PHQ: the 9-item Patient Health Questionnaire, GAD-7: the 7-item Generalized Anxiety Disorder Scale.





Funding information

This work was financially supported by JSPS Grants-in-Aid for Scientific Research Grant Number 20H01584. The funders had no role in study design, data collection and analysis, decision to publish, or preparation of the manuscript.

Supplementary Files for “Mental Health Status of the General Population during the COVID-19 Pandemic: A Cross-sectional National Survey in Japan”

- Supplementary Table 1: PHQ-9 Scores by Subgroup
- Supplementary Table 2: GAD-7 Scores by Subgroup
- Supplementary Table 3: PHQ-9 Categories by Subgroup
- Supplementary Table 4: GAD-7 Categories by Subgroup
- Supplementary Figure 1: PHQ-9 Raw Scores by Selected Subgroup
- Supplementary Figure 2: GAD-7 Raw Scores by Selected Subgroup

Supplementary Table 1: PHQ-9 Scores by Subgroup

		count	mean	std	min	25%	50%	75%	max
All	All	1000	5.321	5.641	0	1	4	8	27
Age groups (3 groups)	Young (age 18-39 yrs)	302	6.427	6.200	0	2	4	9	27
	Middle (age 40-59 yrs)	361	6.105	6.036	0	1	5	9	27
	Older (age 60 yrs -)	337	3.490	3.999	0	0	2	5	27
Age groups (5 groups)	18-29 yrs	152	6.487	6.137	0	2	5	9	26
	30-39 yrs	150	6.367	6.283	0	2	4	9	27
	40-49 yrs	190	6.595	6.208	0	1	5	10	27
	50-59 yrs	171	5.561	5.809	0	1	4	8	27
	60-69 yrs	177	3.791	4.503	0	0	2	7	27
	70 yrs-	160	3.156	3.338	0	1	2	5	18
Sex	Female	504	5.411	5.504	0	1	4	8	27
	Male	496	5.230	5.780	0	1	3	8	27
Education	Without college degree	560	5.234	5.482	0	1	4	8	27
	With college degree	440	5.432	5.841	0	1	4	9	27
Household income	<4 million yen	319	6.213	6.341	0	1	4	9	27
	4>= and <8 million yen	338	4.731	4.843	0	1	3	7	21
	8 million or higher	168	4.637	5.144	0	1	3	6.25	22
	No information	175	5.491	5.978	0	1	4	8	27
Household Finance	Unchanged or better off	774	4.607	5.121	0	1	3	7	27
	Worse off	226	7.765	6.589	0	2	7	11	27
Employment Status	Permanent Employee	360	5.694	5.772	0	1	4	9	27
	Part-time, temporary worker	97	5.320	5.411	0	1	4	9	26
	Self-employed	47	3.787	4.805	0	0.5	3	5	27
	Unemployed, laid off, or on leave	71	8.225	7.565	0	2	6	12	27
	Not in the labor force	425	4.689	5.096	0	1	3	7	27
Area of residence	Outside special alert areas	350	5.194	5.782	0	1	3	8	27
	In special alert areas	650	5.389	5.566	0	1	4	8	27

Note: PHQ-9 is the 9-item Patient Health Questionnaire (range 0-27).

Supplementary Table 2: GAD-7 Scores by Subgroup

		count	mean	std	min	25%	50%	75%	max
All	All	1000	3.892	4.659	0	0	2	6	21
Age groups (3 groups)	Young (age 18-39 yrs)	302	4.666	5.174	0	1	3	7	21
	Middle (age 40-59 yrs)	361	4.560	4.918	0	0	3	7	21
	Older (age 60 yrs -)	337	2.484	3.412	0	0	1	4	21
Age groups (5 groups)	18-29 yrs	152	4.388	5.112	0	0	3	7	21
	30-39 yrs	150	4.947	5.238	0	1	3.5	7	21
	40-49 yrs	190	4.974	5.002	0	1	4	7	21
	50-59 yrs	171	4.099	4.797	0	0	3	6	21
	60-69 yrs	177	2.729	3.690	0	0	1	4	21
	70 yrs-	160	2.213	3.064	0	0	1	3.25	18
Sex	Female	504	4.085	4.513	0	1	3	6	21
	Male	496	3.696	4.800	0	0	2	6	21
Education	Without college degree	560	3.864	4.613	0	0	2	6	21
	With college degree	440	3.927	4.723	0	0	2	6	21
Household income	<4 million yen	319	4.254	5.079	0	0	3	6	21
	4>= and <8 million yen	338	3.609	4.137	0	0	2	6	21
	8 million or higher	168	3.298	4.145	0	0	2	5	21
	No information	175	4.349	5.188	0	0	2	7	21
Household Finance	Unchanged or better off	774	3.292	4.165	0	0	2	5	21
	Worse off	226	5.947	5.596	0	1	4	9	21
Employment Status	Permanent Employee	360	4.006	4.575	0	0	3	6	21
	Part-time, temporary worker	97	4.351	5.441	0	0	2	6	21
	Self-employed	47	2.468	2.865	0	0	1	4	10
	Unemployed, laid off, or on leave	71	6.183	6.289	0	0.5	4	10	21
	Not in the labor force	425	3.466	4.238	0	0	2	5	21
Area of residence	Outside special alert areas	350	3.977	4.948	0	0	2	6	21
	In special alert areas	650	3.846	4.500	0	0	2	6	21

Note: GAD-7 is the 7-item Generalized Anxiety Disorder Scale (range 0-21).

Supplementary Table 3: PHQ-9 Categories by Subgroup

		n						%				
		count	none	mild	moderate	moderately severe	severe	none	mild	moderate	moderately severe	severe
All	All	1000	569	250	100	52	29	56.9	25.0	10.0	5.2	2.9
Age groups (3 groups)	Young (age 18-39 yrs)	302	153	76	37	21	15	50.7	25.2	12.3	7.0	5.0
	Middle (age 40-59 yrs)	361	179	100	43	26	13	49.6	27.7	11.9	7.2	3.6
	Older (age 60 yrs -)	337	237	74	20	5	1	70.3	22.0	5.9	1.5	0.3
Age groups (5 groups)	18-29 yrs	152	74	42	19	9	8	48.7	27.6	12.5	5.9	5.3
	30-39 yrs	150	79	34	18	12	7	52.7	22.7	12.0	8.0	4.7
	40-49 yrs	190	84	57	27	14	8	44.2	30.0	14.2	7.4	4.2
	50-59 yrs	171	95	43	16	12	5	55.6	25.1	9.4	7.0	2.9
	60-69 yrs	177	118	41	14	3	1	66.7	23.2	7.9	1.7	0.6
	70 yrs-	160	119	33	6	2	0	74.4	20.6	3.8	1.3	0.0
Sex	Female	504	281	128	57	24	14	55.8	25.4	11.3	4.8	2.8
	Male	496	288	122	43	28	15	58.1	24.6	8.7	5.6	3.0
Education	Without college degree	560	322	138	62	22	16	57.5	24.6	11.1	3.9	2.9
	With college degree	440	247	112	38	30	13	56.1	25.5	8.6	6.8	3.0
Household income	<4 million yen	319	171	75	40	16	17	53.6	23.5	12.5	5.0	5.3
	4>= and <8 million yen	338	201	82	37	14	4	59.5	24.3	10.9	4.1	1.2
	8 million or higher	168	101	44	8	14	1	60.1	26.2	4.8	8.3	0.6
Household Finance	No information	175	96	49	15	8	7	54.9	28.0	8.6	4.6	4.0
	Unchanged or better off	774	482	188	60	30	14	62.3	24.3	7.8	3.9	1.8
	Worse off	226	87	62	40	22	15	38.5	27.4	17.7	9.7	6.6
Employment Status	Permanent Employee	360	196	89	39	28	8	54.4	24.7	10.8	7.8	2.2
	Part-time, temporary worker	97	50	27	13	6	1	51.5	27.8	13.4	6.2	1.0
	Self-employed	47	34	9	3	0	1	72.3	19.1	6.4	0.0	2.1
	Unemployed, laid off, or on leave	71	29	19	8	6	9	40.8	26.8	11.3	8.5	12.7
	Not in the labor force	425	260	106	37	12	10	61.2	24.9	8.7	2.8	2.4
Area of residence	Outside special alert areas	350	206	80	35	17	12	58.9	22.9	10.0	4.9	3.4
	In special alert areas	650	363	170	65	35	17	55.8	26.2	10.0	5.4	2.6

Note: "none" refers to PHQ-9 score of 0-4; "mild": 5-9; "moderate": 10-14; "moderately severe": 15-19; "severe": 20-27.

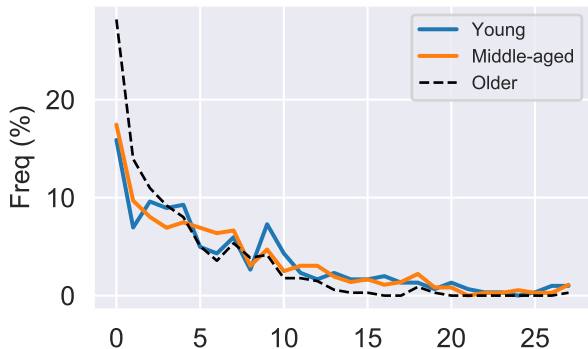
Supplementary Table 4: GAD-7 Categories by Subgroup

		count	n				%			
			none	mild	moderate	severe	none	mild	moderate	severe
All	All	1000	668	218	71	43	66.8	21.8	7.1	4.3
Age groups (3 groups)	Young (age 18-39 yrs)	302	183	75	25	19	60.6	24.8	8.3	6.3
	Middle (age 40-59 yrs)	361	220	85	35	21	60.9	23.5	9.7	5.8
	Older (age 60 yrs -)	337	265	58	11	3	78.6	17.2	3.3	0.9
Age groups (5 groups)	18-29 yrs	152	99	32	13	8	65.1	21.1	8.6	5.3
	30-39 yrs	150	84	43	12	11	56.0	28.7	8.0	7.3
	40-49 yrs	190	107	50	22	11	56.3	26.3	11.6	5.8
	50-59 yrs	171	113	35	13	10	66.1	20.5	7.6	5.8
	60-69 yrs	177	137	32	6	2	77.4	18.1	3.4	1.1
	70 yrs-	160	128	26	5	1	80.0	16.3	3.1	0.6
	Sex	Female	504	331	118	34	21	65.7	23.4	6.7
	Male	496	337	100	37	22	67.9	20.2	7.5	4.4
Education	Without college degree	560	376	119	41	24	67.1	21.3	7.3	4.3
	With college degree	440	292	99	30	19	66.4	22.5	6.8	4.3
Household income	<4 million yen	319	205	70	24	20	64.3	21.9	7.5	6.3
	4>= and <8 million yen	338	230	74	25	9	68.0	21.9	7.4	2.7
	8 million or higher	168	120	35	10	3	71.4	20.8	6.0	1.8
	No information	175	113	39	12	11	64.6	22.3	6.9	6.3
Household Finance	Unchanged or better off	774	552	160	41	21	71.3	20.7	5.3	2.7
	Worse off	226	116	58	30	22	51.3	25.7	13.3	9.7
Employment Status	Permanent Employee	360	232	86	28	14	64.4	23.9	7.8	3.9
	Part-time, temporary worker	97	65	16	8	8	67.0	16.5	8.2	8.2
	Self-employed	47	36	9	2	0	76.6	19.1	4.3	0.0
	Unemployed, laid off, or on leave	71	37	14	12	8	52.1	19.7	16.9	11.3
	Not in the labor force	425	298	93	21	13	70.1	21.9	4.9	3.1
Area of residence	Outside special alert areas	350	238	69	21	22	68.0	19.7	6.0	6.3
	In special alert areas	650	430	149	50	21	66.2	22.9	7.7	3.2

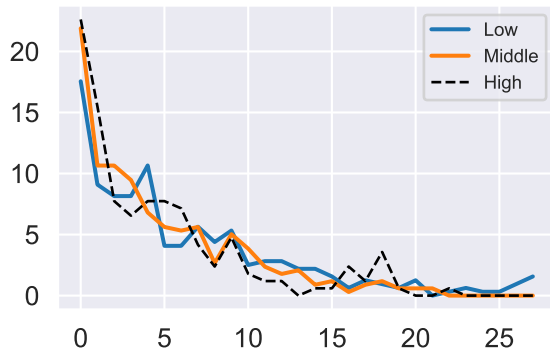
Note: "none" refers to GAD-7 score of 0-4; "mild": 5-9; "moderate": 10-14; "severe": 15-21.

Supplementary Figure 1: PHQ-9 Raw Scores by Selected Subgroup

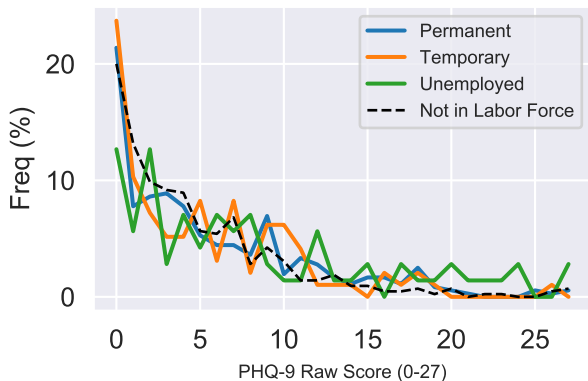
By Age Group



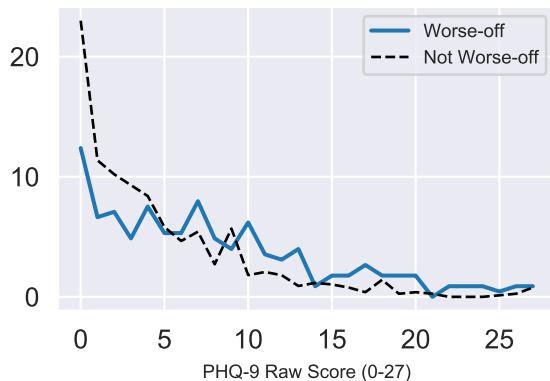
By Income Group



By Employment Status

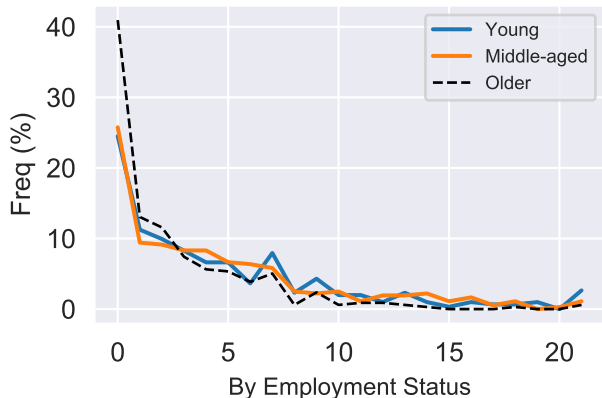


By Financial Situation

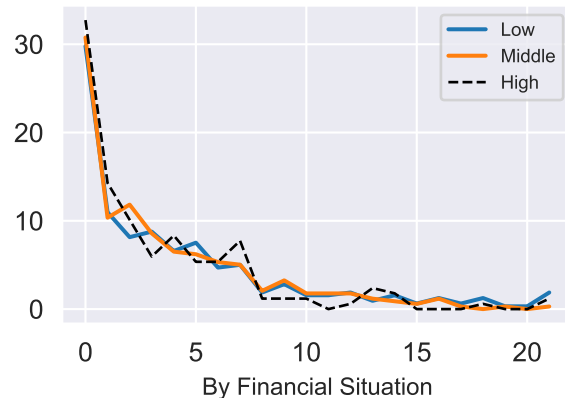


Supplementary Figure 2: GAD-7 Raw Scores by Selected Subgroup

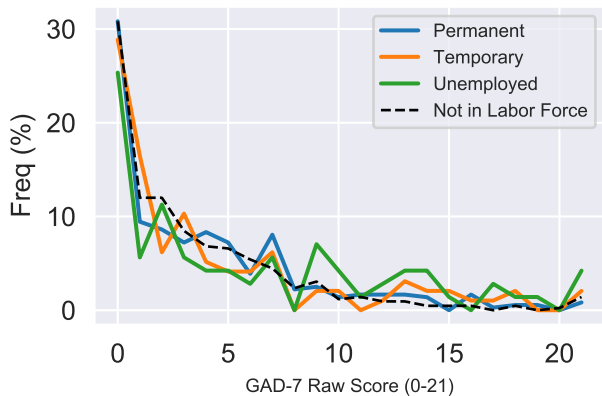
By Age Group



By Income Group



By Employment Status



By Financial Situation

