

1 ***Title page***

2 **Correlation analysis of risk factors and GSI score of a medical team assisting**

3 **Wuhan city during the epidemic of COVID-19 in China -A cohort study**

4 **Academic titles of all authors:**

5 Cheng Wang¹, Jinlong Zhang ^{*1,2},Zhaohui Lu³, Jingquan Wang⁴ , Yunyun Fang⁵, Yanlin Wang⁶,

6 Xia Chen⁷, Na Hong⁸, Xiaolei Jing⁹

7 ***First author:***

8 Jinlong Zhang ^{1,2} MA.Sc

9 **Affiliations:**

10 1. Rehabilitation Department, The first affiliated Hospital of university of science and technology
11 of China (Anhui Provincial Hospital), Hefei, Anhui Province, People's Republic of China

12 2. Rehabilitation Department, Hefei BOE Hospital of BOE Technology Group, Hefei, Anhui
13 Province, People's Republic of China

14 **Email:** zhly520@tom.com

15

16 **** Co-first author and corresponding author:***

17 Cheng Wang ¹ MA.Sc

18 **Affiliations:**

19 1. Department of Rehabilitation Medicine, The First Affiliated Hospital of University of Science
20 and Technology of China (Anhui Provincial Hospital), Hefei, Anhui Province, People's Republic
21 of China

22 **Email:** 2814836650@qq.com

23 **Address :**

24 No.1 Swan Lake Road

25 Hefei City

26 Anhui Province

27 China

28 **Code:** 230001

29 **Tel:** +8618963782623

30

31 ***Other Co-first authors:***

32 Zhaohui Lu³MA.Sc

33 **Affiliations:**

34 **3.** Infectious Diseases Division, The First Affiliated Hospital of University of Science and
35 Technology of China (Anhui Provincial Hospital), Hefei, Anhui Province, People's Republic of
36 China

37 E-mail: lzh3290@sina.com

38 Jingquan Wang⁴ MA.Sc

39 **Affiliations:**

1 4. Intensive Care Unit, The First Affiliated Hospital of University of Science and Technology of
2 China (Anhui Provincial Hospital), Hefei, Anhui Province, People's Republic of China
3 E-mail: jqwang604@163.com

4

5 **Other authors**

6 Yunyun Fang⁵ MA.Sc

7 **Affiliations:**

8 5. Traditional Chinese Medicine Department, Jiangning Hospital of Nanjing Medical University,
9 Nanjing, Jiangsu Province, People's Republic of China

10 **Email:** cdfk22@tom.com

11

12 Yanlin Wang⁶ MA.Sc

13 **Affiliations:**

14 6. Department of ECG, The First Affiliated Hospital of University of Science and Technology of
15 China (Anhui Provincial Hospital), Hefei, Anhui Province, People's Republic of China

16 E-mail: 419939208@qq.com

17

18 Xia Chen⁷ BA

19 **Affiliations:**

20 7. Department of Gastroenterology, The First Affiliated Hospital of University of Science and
21 Technology of China (Anhui Provincial Hospital), Hefei, Anhui Province, People's Republic of
22 China

23 **Email:** 1569265542@qq.com

24

25 Na Hong⁸ MA.Sc

26 **Affiliations:**

27 8. Department of Gastroenterology, The First Affiliated Hospital of University of Science and
28 Technology of China (Anhui Provincial Hospital), Hefei, Anhui Province, People's Republic of
29 China

30 **Email:** hongnahappy@163.com

31

32 Xiaolei Jing⁹ MA.Sc

33 **Affiliations:**

34 9. Department of Neurosurgery, The First Affiliated Hospital of University of Science and
35 Technology of China (Anhui Provincial Hospital), Hefei, Anhui Province, People's Republic of
36 China

37 E-mail: 3391791883@qq.com

38

39

40

41

42

1

2 **Key Points**

3 **Question:** What is the correlation between risk factors and general symptom index
4 (GSI) score of medical team members who support Wuhan against COVID-19?

5 **Findings:** Dietary conditions (DC) had a positive and relationship between team
6 (RBT) had a negative correlation with GSI score of female, but for male was not
7 ($P=0.59>0.05$, $P=0.08>0.05$, respectively), lacking communication with teams
8 (LCWT) and afraid of being infected (AoBI) didn't had correlation with GSI score
9 between genders, a significant difference.

10 **Meaning:** Improving DC, RBT and decreasing LCWT between team members can
11 reduce the GSI score. Whether they are AoBI, didn't affect the psychological status,
12 male members have a more stable mood than female.

13

14

15

16

17

18

19

20

21

22

1

2 **Abstract**

3 **Importance:** There are few studies on the psychological status of medical staff during
4 the COVID-19 outbreak. This study is the first in the world about the psychological
5 status of the medical team during the COVID-19 outbreak.

6 **Objective:** To study the correlation between risk factors and general symptom index
7 (GSI) score of medical team members who support Wuhan against COVID-19.

8 **Design:** Cohort study.

9 **Setting:** Population-based.

10 **Participants:** Anhui Province sent a total of eight medical teams, including 1382
11 members, to support Hubei Province. We adopted a stratified sampling method and
12 selected the fourth team sent by Anhui Provincial Hospital, with a total of 137
13 members as our subjects.

14 **Exposures:** Four main exposures were collected, including basic information,
15 preparations before going to Wuhan, life issues and working issues after going to
16 Wuhan.

17 **Main Outcomes and Measures:** The GSI score of SCL-90 scale was used to reflect
18 the frequency and intensity of psychological symptoms. We made the hypothesis of
19 this study before data collection.

20 **Results:** 110(80.29%) members completed the questionnaire, of which, 77(70.00%)
21 female and 33(30.00%) male. When adjusted age, gender and covariates, DC, LCWT
22 had a positive correlations with GSI score(β was 10.17, 95%CI was 3.30 to 17.04 for

1 DC, $P=0.00<0.05$; β was 11.55, 95%CI was 0.40 to 22.71 for LCWT, P
2 $=0.04<0.05$;respectively), RBT had a negative positive correlation with GSI score (β
3 was -28.09, 95%CI was -45.79 to -10.40, $P=0.00<0.05$), AoBI did not had a
4 correlation with GSI score (β was 11.55, 95%CI was 0.40 to 22.71, $P=0.16>0.05$).
5 When adjusted covariates, DC had a positive and RBT had a negative correlation with
6 GSI score of female (β was 13.20, 95%CI was 4.55 to 21.85, $P=0.00<0.05$; β was
7 -57.85, 95%CI was -94.52 to -21.18, $P=0.00<0.05$; respectively), but for male was not
8 ($P=0.59>0.05$, $P=0.08>0.05$, respectively), LCWT and AoBI didn't had correlation
9 with GSI score between genders ($P>0.05$).

10 **Conclusions and Relevance:** Improving DC, RBT and decreasing LCWT can reduce
11 the GSI score. AoBI didn't affect the psychological status; male members have a more
12 stable mood than female. Whether other countries medical team has the same result
13 still needs further research.

14

15

16

17

18

19

20

21

22

1

2 *Manuscript page*

3 **Correlation analysis of risk factors and GSI score of a medical team assisting**

4 **Wuhan city during the epidemic of COVID-19 in China -A cohort study**

5 *Abstract*

6 **Importance:** There are few studies on the psychological status of medical staff during
7 the COVID-19 outbreak. This study is the first in the world about the psychological
8 status of the medical team during the COVID-19 outbreak.

9 **Objective:** To study the correlation between risk factors and general symptom index
10 (GSI) score of medical team members who support Wuhan against COVID-19.

11 **Design:** Cohort study.

12 **Setting:** Population-based.

13 **Participants:** Anhui Province sent a total of eight medical teams, including 1382
14 members, to support Hubei Province. We adopted a stratified sampling method and
15 selected the fourth team sent by Anhui Provincial Hospital, with a total of 137
16 members as our subjects.

17 **Exposures:** Four main exposures were collected, including basic information,
18 preparations before going to Wuhan, life issues and working issues after going to
19 Wuhan.

20 **Main Outcomes and Measures:** The GSI score of SCL-90 scale was used to reflect
21 the frequency and intensity of psychological symptoms. We made the hypothesis of
22 this study before data collection.

1 **Results:** 110(80.29%) members completed the questionnaire, of which, 77(70.00%)
2 female and 33(30.00%) male. When adjusted age, gender and covariates, DC, LCWT
3 had a positive correlations with GSI score(β was 10.17, 95%CI was 3.30 to 17.04 for
4 DC, $P=0.00<0.05$; β was 11.55, 95%CI was 0.40 to 22.71 for LCWT, P
5 $=0.04<0.05$;respectively), RBT had a negative positive correlation with GSI score (β
6 was -28.09, 95%CI was -45.79 to -10.40, $P=0.00<0.05$), AoBI did not had a
7 correlation with GSI score (β was 11.55, 95%CI was 0.40 to 22.71, $P=0.16>0.05$).
8 When adjusted covariates, DC had a positive and RBT had a negative correlation with
9 GSI score of female (β was 13.20, 95%CI was 4.55 to 21.85, $P=0.00<0.05$; β was
10 -57.85, 95%CI was -94.52 to -21.18, $P=0.00<0.05$; respectively), but for male was not
11 ($P=0.59>0.05$, $P=0.08>0.05$, respectively), LCWT and AoBI didn't had correlation
12 with GSI score between genders ($P>0.05$).

13 **Conclusions and Relevance:** Improving DC, RBT and decreasing LCWT can reduce
14 the GSI score. AoBI didn't affect the psychological status; male members have a more
15 stable mood than female. Whether other countries medical team have the same result
16 still needs further research.

17 **Keywords :** Psychological status; Risk factors; COVID-19; SCL-90 scale; GSI score

18

19 **1. Introduction**

20 COVID-19 was endemic in China at the end of 2019. Data as received by WHO
21 from national authorities by 10:00 CEST, 23 April 2020, there were 2 544 792
22 confirmed cases and 175 694 deaths¹, In this epidemic, China has quickly taken

1 various effective measures. Now the epidemic is basically under effective control in
2 China. These experiences are worth sharing with the world. One of the measures was
3 to recruit medical personnel from various provinces and cities across the country to
4 support the most severely affected province-Hubei, with a total of nearly 40,000
5 medical personnel. This type of disease has caused global panic, and medical staffs
6 are no exception , they may also feel panic²⁻⁴. The current research mainly focuses on
7 the psychological status of infected people⁵⁻⁷. Few people pay attention to the
8 psychological symptoms of medical staff , a study found that it is helpful to take
9 effective interventions to meet their needs if the needs of nurses caring for COVID-19
10 patients could be perceived well, the main needs was health and security⁸. At the time
11 of the COVID-19 epidemic outbreak in China, the heroic Chinese medical staffs were
12 under the tremendous pressure of fighting the COVID-19, whether they had a poor
13 psychological status? And what the risk factors were? So far, there was no research
14 report and also no similar literature in other countries around the world when we
15 search the database on line.

16 Symptom Checklist-90 (SCL-90) scale has been widely used in psychology
17 research in the world. The author used this scale to evaluate ordinary people
18 psychology status during COVID-19 pandemic in China, and found which also had a
19 significant adverse socio-psychological influence on ordinary citizens⁹. It has good
20 reliability and validity^{10, 11}, and can reflect the mental and psychological status of the
21 recipients from multiple dimensions. The GSI score of SCL-90 can reflect the
22 frequency and intensity of psychological symptoms^{12, 13}. Therefore, this study

1 analyzed the GSI score of a medical team, we carried out systematic statistical
2 analysis to find out the risk factors that affected the GSI score, in order to provide a
3 theoretical basis for precise psychological intervention for medical staffs.

4 **2. Methods**

5 **2.1 Design methods**

6 We used a cohort study, using the single-blind method; the participants were not
7 clear about the purpose.

8 **2.2 Data collecting methods**

9 We used Questionnaire star APP (<https://www.wjx.cn/>) to collect the data, the
10 collected data set includes the basic information, preparations before going to Wuhan,
11 life issues and working issues after going to Wuhan. The basic information included
12 seven sub risk factors-age, working age, education background, only child of the
13 family, marriage status, childbirth status and family relationships. There were five sub
14 risk factors of preparations before going to Wuhan, including COVID-19 knowledge,
15 infection prevention and control knowledge, confidence to complete the task,
16 emergency aid experience and relationships with team (RBT). There were seven sub
17 risk factors of life issues after going to Wuhan, including dietary conditions (DC),
18 sleep quality (SQ), limit range of activities (LRoA), care about me (CAM), lavation
19 conditions (LC), residential conditions (RC) and surrounding conditions (SC).There
20 were nine sub risk factors of working issues after going to Wuhan, which were
21 unfamiliar with medical records system (UWMRS), unfamiliar with working
22 environment (UWWE), difficulty communicating with patients (DCWP), unfamiliar

1 with workflow (UWW), lacking medical equipments (LME), long working hours
2 (LWH), lacking communication with teams (LCWT), difficulty communicating with
3 local hospital (DCWLH) and fear of being infected (AoBI). The GSI score of SCL-90
4 scale was used to reflect the frequency and intensity of psychological symptoms

5 **2.3 Statistical methods**

6 In this survey study we took a purposive approach with no sample estimation.
7 Data were analyzed using the statistical packages R (R Foundation;
8 <http://www.r-project.org;version3.4.3>) and EmpowerStats (<http://www.empowerstats.com>;
9 X&Y Solutions Inc, Boston, MA). Multivariable logistic regression model,
10 single factor logistic regression model, generalized estimated equation model, T-test
11 and Pearson's chi-square tests were used to analyze the data, estimated change (β) and
12 95% confidence interval(CI) were used to establish the demographic and clinic
13 characteristic of the sample, results were considered statistically significant with
14 $P<0.05$.

15 **2.4 Ethical considerations**

16 The participants of this study filled out the questionnaire anonymously. Our
17 research was approved by the Ethics Committee of the First Affiliated Hospital of
18 University of Science and Technology of China (Anhui Provincial Hospital).

19 **3. Results**

20 **3.1 Flow chart of the study**

21 Anhui Province sent a total of eight medical teams to support Hubei, with a total
22 of 1,362 medical members, including a total of 274 in the fourth medical team, which

1 were selected from the First Affiliated Hospital of Anhui Medical University and the
2 First Affiliated Hospital of University of Science and Technology of China (Anhui
3 Provincial Hospital). The first author of this study was one of the members of the
4 latter medical constitution, so the object was the members of the latter as for the
5 convenience of research. For details, see Fig1.

6 ***3.2 Demographic and risk factors of members***

7 110(80.29%) members completed the questionnaire, of which, 77(70.00%)
8 female and 33(30.00%) male. For basic information, 76.6% female and 69.7% male
9 had a bachelor degree, the difference of education background ratio between the
10 genders was statistically significant($X^2=9.77$, $df=3$, $P=0.02<0.05$). 41.6% female and
11 21.2% male unmarried, the marriage ratio between the genders was also statistically
12 significant($X^2=4.18$, $df=1$, $P=0.04<0.05$). For preparations before going to Wuhan,
13 the relationships with team (RBT) factor had a statistically significant between
14 genders, 98.7% female and 90.9% male felt a good interpersonal relationship with the
15 team($X^2=4.00$, $df=1$, $P=0.04<0.05$).For life issues after going to Wuhan, 96.1%
16 female and 84.8% male felt care about me(CAM) from the team, and the differences
17 also had a statistically significant($X^2=4.34$, $df=1$, $P=0.04<0.05$).The other factors of
18 genders had no statistically significant($P>0.05$).

19 ***3.3 Crude correlation associations of exposure risk factors and GSI score of the*** 20 ***members***

21 As seen in table2,we analyzed the exposure risk factors, the single factor analysis
22 showed risk factors of basic information had no correlation with GSI score($P>0.05$).

1 For preparations before going to Wuhan, there were five risk factors, RBT had a
2 negative correlation with GSI score, estimated change was -20.63, 95%CI was -39.65
3 to -1.60, the difference had a statistically significant($P=0.04<0.05$). For life issues
4 after going to Wuhan, there were seven risk factors, DC had a positive correlation
5 with GSI score, estimated change was 11.08, 95% CI was 4.11 to 18.05, the difference
6 had a statistically significant($P=0.00<0.05$). For working issues after going to Wuhan,
7 there were nine risk factors, LCWT and AoBI had a positive correlation with GSI
8 score, the estimated change was 17.11 and 16.32 respectively, 95%CI was 6.32 to
9 27.90 and 5.08 to 27.57 respectively, the difference had a statistically significant
10 ($P=0.00<0.05, P=0.01<0.05$, respectively).

11 **3.4 Multivariate logistic regression model for DC, LCWT, AoBI, RBT and GSI** 12 **score of the members**

13 Multivariate logistic regression analysis showed that, for DC, LCWT, AoBI and
14 RBT, when unadjusted covariates, DC, LCWT and AoBI had a positive correlations
15 with GSI score($P<0.05$), RBT had a negative correlation with GSI score($P<0.05$);
16 When adjusted age and gender, DC, LCWT and AoBI also had a positive correlations
17 with GSI score($P<0.05$), RBT also had a negative correlation with GSI; For DC,
18 when adjusted LCWT, AoBI and RBT, DC also had a positive correlation with GSI
19 score($P=0.00<0.05$), estimated change was 10.17, 95%CI was 3.30 to 17.04; For
20 LCWT, when adjusted DC, AoBI and RBT, LCWT also had a positive correlation
21 with GSI score($P=0.04<0.05$), estimated change was 11.55, 95%CI was 0.40 to 22.71;
22 For AoBI, when adjusted DC, LCWT and RBT, AOBI did not had a correlation with

1 GSI score($P=0.16>0.05$), estimated change was 11.55, 95%CI was 0.40 to 22.71, this
2 result showed that if control other covariates, AOBi will not influence GSI score. For
3 RBT, when adjusted DC, LCWT and AoBI, RBT also had a negative positive
4 correlation with GSI score ($P=0.00<0.05$), estimated change was -28.09, 95%OR was
5 -45.79 to -10.40.(Table3)

6 **3.5 Stratification analysis of DC, LCWT, AoBI, RBT and GSI score of the** 7 **members between genders**

8 Multivariate logistic regression stratification analysis showed that DC , LCWT
9 and AoBI of female had a positive correlation with GSI score for non- adjusted model
10 and adjusted I model, RBT of female had a negative correlation with GSI score for
11 non- adjusted model and adjusted I model, the differences had statistically
12 significant($P<0.05$). But for male, above factors had no correlation with GSI score for
13 non-adjusted model, the differences did not had statistically significant ($P>0.05$), DC
14 and RBT had no correlation with GSI score for adjusted I model, the differences also
15 did not had statistically significant ($P>0.05$), LCWT and AoBI had correlation with
16 GSI score for adjusted I model, the differences had statistically significant ($P<0.05$).
17 This results showed that when adjusted age, for female, the relationships of DC,
18 LCWT,AoBI, RBT and GSI score didn't changed. But for male, when adjusted age,
19 LCWT and AoBI correlations with GSI score started to appear, which showed that age
20 may was an effect modifier. The adjusted II model showed when adjusted covariates
21 of LCWT, AoBI and RBT, DC had a positive correlation with GSI score of female,
22 estimated change was 13.20, 95%CI was 4.55 to 21.85, the difference was statistically

1 significant($P=0.00<0.05$), but for male was not($P=0.59>0.05$). RBT had a negative
2 correlation with GSI score of female, when adjusted covariates of DC, LCWT and
3 AoBI, the estimated change was -57.85,95%CI was -94.52 to -21.18, the difference
4 was statistically significant($P=0.00<0.05$), for male was also not($P=0.08>0.05$).
5 LCWT and AoBI didn't had correlation with GSI score between genders, the
6 differences were not statistically significant ($P>0.05$), when adjusted covariates of DC
7 and RBT in adjusted II model (table4).

8 **4. Discussion**

9 The 2019-nCoV(2019 new coronavirus) is officially called SARS-CoV-2 (severe
10 acute respiratory syndrome-coronavirus-2) and the disease is named
11 COVID-19(Corona virus disease-2019), which is currently causing a pandemic in the
12 world. More than 1 million people have been infected with coronavirus, and tens of
13 thousands have died, causing panic in the whole society. People who are not infected
14 are worried and afraid of being infected^{7, 14, 15}. Patients who are already infected are
15 worried about whether they can get timely and effective treatment. The pandemic of
16 SARS-CoV-2 has had significant social, psychological and economic consequences
17 worldwide¹⁶, especially for low-income patients, this is a serious concern when linked
18 to the pandemic¹⁷.

19 The outbreak of the SARS-CoV-2 is undesirable by people and needs to be
20 faced with all over the world, but unfortunately, there are too many news reports that
21 SARS-CoV-2 has caused racial hatred and violence in some countries. The occurrence
22 of these incidents is not conducive to fight the epidemic. Medical staffs are the main

1 force to fight against COVID-19. They directly face the patients who have been
2 infected and the chance of being infected is relatively large at work. At present, the
3 psychological research objects of COVID-19 are mainly patients or the general public,
4 but few people pay attention to and study the psychological status of medical staff.
5 A study found that the sudden increase in confirmed cases had brought tremendous
6 stress and anxiety to frontline surgical staff, and researchers believe that early
7 psychological intervention were essential¹⁸. Researchers from Italy found that at least
8 2,629 health workers have been infected with coronavirus since the outbreak onset in
9 February, representing 8.3% of total cases¹⁹. If the medical staffs also feel panic, it
10 may affect their medical behavior, such as avoiding, reducing communication with
11 infected people, or even leaving the job. Therefore, improving the enthusiasm of the
12 medical staff and reducing their panic will play a decisive role in improving the
13 clinical efficacy and even achieving the successful control of the epidemic.

14 Preliminary evidence suggests that symptoms of anxiety and depression
15 (16–28%) and self-reported stress (8%) are common psychological reactions to the
16 COVID-19 pandemic, and may be associated with disturbed sleep²⁰. The outbreak of
17 COVID-19 infection had an effect on the psychology of the elderly people, resulting
18 in anxiety and depression⁶. Our research found that the GSI scores of medical team
19 members were not affected by age, as well as working age, educational background,
20 family relationship, marital status, and fertility status. Before going to Wuhan,
21 medical team members need to receive hospital infection knowledge prevention and
22 control training, learn COVID-19 knowledge, and build confidence in defeating the

1 disease. Knowledge of COVID-19, confidence to complete the task and emergency
2 aid experience also did not have correlations with GSI score. We found that after
3 training, 99.09% members are confident to fight against COVID-19, but just 42.73%
4 members had emergency aid experience and 4 (3.64%) felt that the relationship with
5 other team members was not in harmony. Such research results showed that in order
6 to control the outbreak of COVID-19, China quickly established medical teams, the
7 team members were from various clinical disciplines.

8 Before going to Wuhan, they did not have time to receive systematic emergency
9 first aid training, and even some team members may not know each other. We have
10 reviewed the literature database in detail, and found no literature about the medical
11 team against COVID-19. A study found that communication had achieved satisfactory
12 results and may play a role in the protection on the psychological condition on the
13 people with close contact with influenza A(H1N1)²¹. Another study showed that
14 patients with difficulty in communicating significant aspects of their complaints to the
15 physician or in understanding his instructions for treatment , the authors believed
16 SCL-90 was a quickly administered and easily scored test that can screen for both
17 psychopathology and communication problems²¹. Our experience is worth sharing
18 with the world, but if there is enough time, the members should best to receive
19 systematic emergency first aid training and to increase communication between them,
20 because our research found that RBT and GSI score were negatively correlated, the
21 more harmonious the relationship between the members, the lower the GSI score.

22 After going to Wuhan, the team members faced life and work issues. Our study

1 showed that DC and AoBI had a positive correlation with GSI score, LCWT had a
2 negative correlation with GSI score for non- adjusted model, but when we adjusted
3 age, gender and covariates, there was no correlation between AoBI and GSI score, but
4 correlations of DC,RBT and LCWT with GSI score didn't changed. This result
5 showed that the influence of AoBI on GSI score was influenced by the three
6 covariates of DC, RBT and LCWT. A literature published in 1990 found that refined
7 sucrose and caffeine free diet can significantly decline in depression on all depression
8 measures, including SCL-90, Beck Depression Inventory (BDI), and Interpersonal
9 Style Inventory (ISI)²².A study found that adding certain substances to food can
10 improve sleep and depression²³. Our research found that DC was related to GSI scores.
11 Good diet can improve the psychological status of medical team members, but
12 standards for DC are different for different people. This risk factor is greatly
13 influenced by personal subjective attitudes. Our medical team members came from all
14 corners of China. Everyone has different preferences for food. Individuals in one
15 study having poor diets were more likely to suffer from depression than those eating
16 good diets²⁴.There is a Chinese proverb called "difficult to adjust for
17 mouth".However, we still recommend the logistics support department of medical
18 team, if time and material conditions permit, it would better try to enrich and diversify
19 the catering, and customize the catering according to each person's different hobbies,
20 so that can alleviate the psychological anxiety and depression.

21 If the RBT was not good, it will be easy result in LCWT, there was a correlation
22 between the two, and some researchers had already confirmed that lacking

1 communication with others could increase anxiety or depression²⁵. As said above , our
2 study also found if the members had bad RBT and LCWT, the GSI Score will
3 increased. Fighting the SARS-CoV-2 epidemic requires joint efforts of medical and
4 nursing members. Due to the short time, members were transferred from various
5 departments to form a team. Many of them did not know each other and understand
6 each other, which will increase their psychological pressure. Some studies have found
7 that recreational activities can improve psychological conditions ^{26, 27}, so we suggest
8 that if there is time between the members, they can participate in some collective
9 recreational activities while ensuring protection, which helps increase mutual
10 understanding and can reduce the chance of bad mood.

11 This study has a shortcoming ,due to lack of time , we did not follow up the team
12 members. We will observe the changes of their psychological status in the later period,
13 to further understand the long-term effects of RBT, LCWT and AoBI on GSI score.

14 **Declaration of competing interest**

15 The author(s) declared no potential conflicts of interest with respect to the
16 research, authorship, and/or publication of this article.

17 **Funding source**

18 This research received no specific grant from any funding agency in the public,
19 commercial, or not-for-profit sectors.

20 **Disclosure statement**

21 No potential conflict of interest was reported by the authors.

22 **Author contributions**

1 Cheng Wang conducted analyses and drafted the manuscript in consultation with
2 Jinglong Zhang and Yunyun Fang. All authors provided critical revisions and
3 approved a final version of the manuscript prior to publication.

4 **Acknowledgements**

5 We sincerely thank Jian Tian, Yan Ma, Jun Wang, Shiyang Zhang and Kai Liu
6 for assorting the data, we thank Changcheng Zheng, Yuyou Zhu, Xuhan Zhang, and
7 Hongzhi Ji for devising and issuing the questionnaire. We also like to thank all the
8 members for their cooperation in our study.

10 **5. References**

- 11 1. https://www.who.int/docs/default-source/coronaviruse/situation-reports/20200423-sitrep-94-covid-19.pdf?sfvrsn=b8304bf0_4.
- 12
- 13 2. Xu J, Xu Q-h, Wang C-m and Wang J. Psychological status of surgical staff during the COVID-19
14 outbreak. *Psychiatry Research*. 2020; 288: 112955.
- 15 3. Lu W, Wang H, Lin Y and Li L. Psychological status of medical workforce during the COVID-19
16 pandemic: A cross-sectional study. *Psychiatry Research*. 2020; 288: 112936.
- 17 4. Chen Y, Zhou H, Zhou Y and Zhou F. Prevalence of self-reported depression and anxiety among
18 pediatric medical staff members during the COVID-19 outbreak in Guiyang, China. *Psychiatry Research*.
19 2020; 288: 113005.
- 20 5. Sun N, Wei L, Shi S, et al. A qualitative study on the psychological experience of caregivers of
21 COVID-19 patients. *American Journal of Infection Control*. 2020.
- 22 6. Meng H, Xu Y, Dai J, Zhang Y, Liu B and Yang H. The Psychological effect of COVID-19 on the
23 Elderly in China. *Psychiatry Research*. 2020: 112983.
- 24 7. The L. COVID-19: fighting panic with information. *The Lancet*. 2020; 395: 537.
- 25 8. Yin X and Zeng L. A study on the psychological needs of nurses caring for patients with
26 coronavirus disease 2019 from the perspective of the existence, relatedness, and growth theory.
27 *International Journal of Nursing Sciences*. 2020.
- 28 9. Tian F, Li H, Tian S, Yang J, Shao J and Tian C. Psychological symptoms of ordinary Chinese citizens
29 based on SCL-90 during the level I emergency response to COVID-19. *Psychiatry Research*. 2020; 288:
30 112992.
- 31 10. Luo W, Guo CX, Han DL and Li ZJ. Reliability and Validity of Chinese Version of the Addiction
32 Severity Index among Drug Users in the Community. *Biomedical and Environmental Sciences*. 2012; 25:
33 684-689.
- 34 11. Ransom D, Ashton K, Windover A and Heinberg L. Internal consistency and validity assessment of

- 1 SCL-90-R for bariatric surgery candidates. *Surgery for Obesity and Related Diseases*. 2010; 6: 622-627.
- 2 12. Tunçel ÖK, Kayıkçıoğlu M, Pırıldar Ş, et al. Mental Status And Physical Activity In Patients With
3 Homozygous Familial Hypercholesterolemia: A Subgroup Analysis Of A Nation-Wide Survey (A-Hit1
4 Registry). *Journal of Clinical Lipidology*. 2020.
- 5 13. Meng C, Wang W, Hao Z and Liu H. Investigation on the influence of isolated environment on
6 human psychological and physiological health. *Science of The Total Environment*. 2020; 716: 136972.
- 7 14. Vellingiri B, Jayaramayya K, Iyer M, et al. COVID-19: A promising cure for the global panic. *Science
8 of The Total Environment*. 2020; 725: 138277.
- 9 15. Parry NMA. COVID-19 and pets: When pandemic meets panic. *Forensic Science International:
10 Reports*. 2020; 2: 100090.
- 11 16. Yang Y, Peng F, Wang R, et al. The deadly coronaviruses: The 2003 SARS pandemic and the 2020
12 novel coronavirus epidemic in China. *Journal of Autoimmunity*. 2020; 109: 102434.
- 13 17. Neto MLR, de Souza RI, Quezado RMM, et al. WHEN BASIC SUPPLIES ARE MISSING, WHAT TO
14 DO? SPECIFIC DEMANDS OF THE LOCAL STREET POPULATION IN TIMES OF CORONAVIRUS – A
15 CONCERN OF SOCIAL PSYCHIATRY. *Psychiatry Research*. 2020: 112939.
- 16 18. Xu J, Xu Q-h, Wang C-m and Wang J. Psychological status of surgical staff during the COVID-19
17 outbreak. *Psychiatry Research*. 2020: 112955.
- 18 19. Neto MLR, Almeida HG, Esmeraldo JDa, et al. When health professionals look death in the eye:
19 the mental health of professionals who deal daily with the 2019 coronavirus outbreak. *Psychiatry
20 Research*. 2020: 112972.
- 21 20. Rajkumar RP. COVID-19 and mental health: A review of the existing literature. *Asian Journal of
22 Psychiatry*. 2020: 102066.
- 23 21. Jian-Yun LU, Mei-Xia LI, Feng J, et al. Investigation on the Influence of Risk Communication to the
24 Psychological Status of People in the Influenza A(H1N1) Quarantine Center. *Journal of Tropical
25 Medicine*. 2010.
- 26 22. Christensen L and Burrows R. Dietary treatment of depression. *Behavior Therapy*. 21: 183-193.
- 27 23. Cauffield JS and Forbes HJ. Dietary supplements used in the treatment of depression, anxiety,
28 and sleep disorders. *Lippincotts Primary Care Practice*. 1999; 3: 290-304.
- 29 24. Liu Y, Ozodiegwu ID, Yu Y, Hess R and Bie R. An association of health behaviors with depression
30 and metabolic risks: Data from 2007 to 2014 U.S. National Health and Nutrition Examination Survey.
31 *Journal of Affective Disorders*. 2017; 217: 190-196.
- 32 25. .!!! INVALID CITATION !!!
- 33 26. Furuhashi Y and Furuhashi S. Group Therapy for University Students with Autism Spectrum
34 Disorders. *European Psychiatry*. 2015; 30: 440.
- 35 27. Furuhashi Y and Shusuke F. Group therapy for university students with autism spectrum
36 disorders. *European Psychiatry*. 2016; 33: S631.

37

38

39

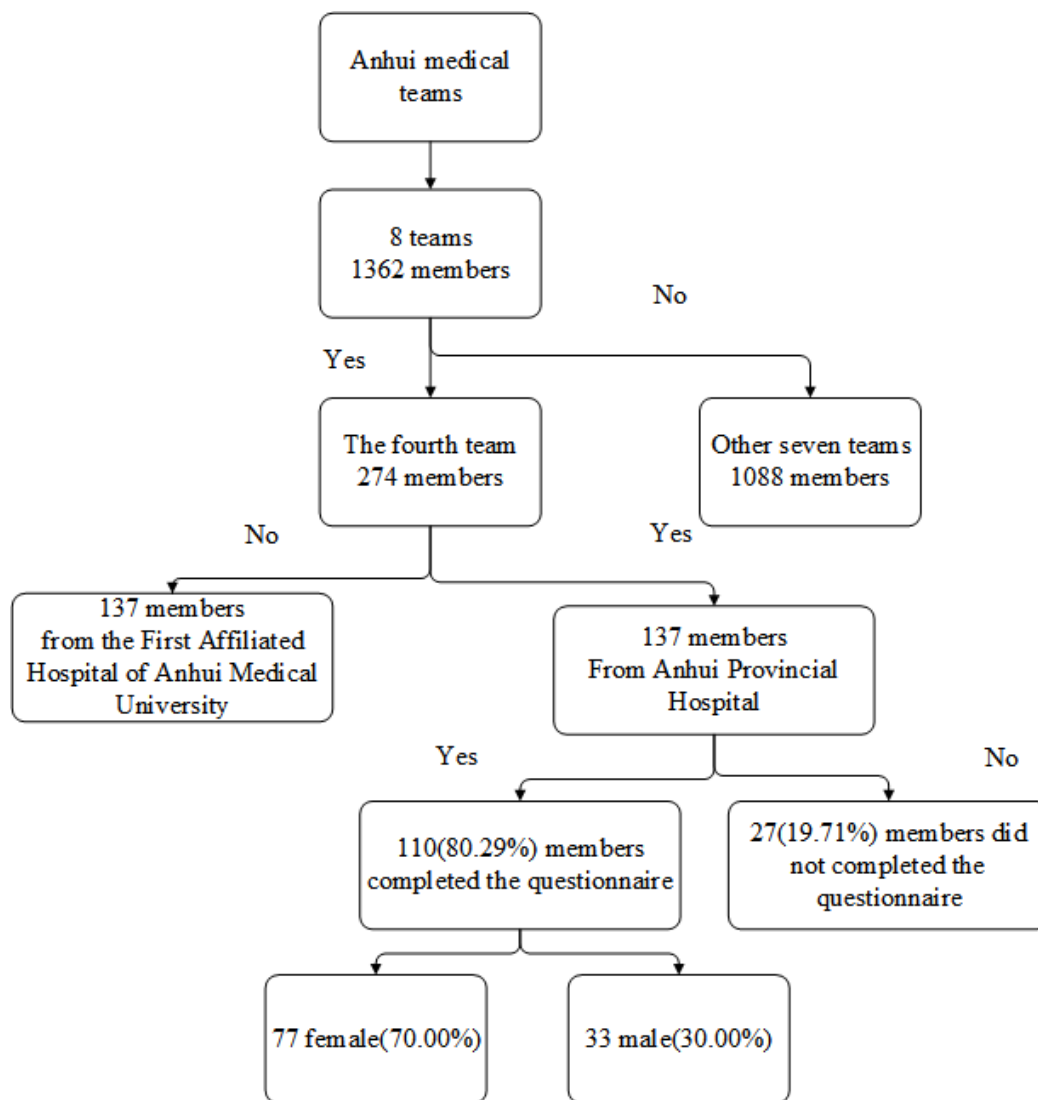
40

1

2

Figure1 Flow chart of the study

3



4

5

6

7

8

9

10

11

12

1

2

3 Table 1 Demographic and risk factors of the sample: 77 women and 33 men

Risk factors	Mean± SD/ N%		P Value
	Women (77)	Men (33)	
Basic information			
<i>Age(years)</i>			0.24
20-29	36.4	21.2	
30-39	50.6	57.6	
>39	13.0	21.2	
<i>Working age (years)</i>			0.21
<5	24.7	15.2	
6-10	33.8	39.4	
10-20	32.5	30.3	
21-30	9.1	9.1	
>30	0.0	6.1	
<i>Education background</i>			0.02*
College	11.7	0.0	
Bachelor	76.6	69.7	
Master	11.7	27.3	
Doctor	0.0	3.0	
<i>Only child of the Family</i>			0.22
Yes	19.5	30.3	
No	80.5	69.7	
<i>Marital Status</i>			0.04*
Married	58.4	78.8	
Unmarried	41.6	21.2	
<i>Childbirth status</i>			0.17
Yes	55.8	69.7	
No	44.2	30.3	
<i>Family relationships</i>			0.86
Good	94.8	93.9	
Poor	5.2	6.1	
Preparations before going to Wuhan city			
<i>Infection prevention and control knowledge</i>			0.17
Familiar	84.4	93.9	
Unfamiliar	15.6	6.1	
<i>COVID-19 knowledge</i>			0.47
Familiar	89.6	93.9	
Unfamiliar	10.4	6.1	
<i>Confidence to complete the task</i>			0.12

Yes	100.0	96.8	
No	0.0	3.2	
<i>Emergency aid experience</i>			0.97
Yes	42.9	42.4	
No	57.1	57.6	
<i>RBT</i>			0.04*
Good	98.7	90.9	
Poor	1.3	9.1	
Life issues after going to Wuhan city			
<i>DC</i>			0.97
Good	48.1	48.5	
Poor	51.9	51.5	
<i>SQ</i>			0.11
Good	35.1	51.5	
Poor	64.9	48.5	
<i>LROA</i>			0.45
Adapted	44.2	36.4	
Unadapted	55.8	63.6	
<i>CAM</i>			0.04*
Yes	96.1	84.8	
No	3.9	15.2	
<i>LC</i>			0.53
Good	57.1	63.6	
Poor	42.9	36.4	
<i>RC</i>			0.62
Good	96.1	93.9	
Poor	3.9	6.1	
<i>SEC</i>			0.07
Good	90.9	78.8	
Poor	9.1	21.2	
Working issues after going to Wuhan city			
<i>UWMRS</i>			0.92
Yes	77.9	78.8	
No	22.1	21.2	
<i>UWWE</i>			0.40
Yes	48.1	39.4	
No	51.9	60.6	
<i>DCWP</i>			0.93
Yes	59.7	60.6	
No	40.3	39.4	
<i>UWW</i>			0.28
Yes	50.6	39.4	
No	49.4	60.6	
<i>LME</i>			0.82

Yes	7.8	9.1	
No	92.2	90.9	
<i>LWH</i>			0.86
Yes	5.2	6.1	
No	94.8	93.9	
<i>LCWT</i>			0.32
Yes	14.3	6.1	
No	85.7	87.9	
<i>DCWLH</i>			0.20
Yes	5.2	12.1	
No	94.8	90.3	
<i>AoBI</i>			0.29
Yes	13.0	6.1	
No	87.0	93.9	
<i>SCL-90 Score</i>			
GSI	1.20±0.24	1.17±0.16	0.56

1 Note: GSI=general symptom index, RBT= relationship between team, DC=dietary conditions, SQ=Sleep quality,
 2 LRoA=limit range of activities, CAM=care about me, LC=lavation conditions, RC=residential conditions, SEC=
 3 surrounding environmental conditions, UWMRS=unfamiliar with medical records system, UWWE=unfamiliar
 4 with working environment, DCWP=difficulty communicating with patients, UWW=unfamiliar with workflow,
 5 LME=lacking medical equipments, LWH=long working hours, LCWT=lacking communication with teams,
 6 DCWLH=difficulty communicating with local hospital, AoBI= afraid of being infected.

7
 8
 9 **Table2.Crude correlation associations of exposure risk factors and GSI of the**
 10 **members**

Variables	Statistics	GSI	
		β 95% CI	<i>P Value</i>
Basic information			
<i>Gender</i>			
Female	77(70.00%)	0	
Male	33(30.00%)	-2.35(-10.27, 5.57)	0.56
<i>Age(years)</i>			
20-29	35(31.82%)	0	
30-39	58 (52.73%)	-4.07 (-12.23, 4.09)	0.33
>39	17 (15.45%)	-1.45 (-12.72, 9.82)	0.80
<i>Working age (years)</i>			
<5	24(21.82%)	0	
6-10	39(35.45%)	-3.39(-13.15, 6.38)	0.50
11-20	35(31.82%)	-7.31(-17.29, 2.66)	0.15
21-30	10(9.09%)	6.96(-7.21, 21.12)	0.34

>30	2(1.82%)	-15.04(-42.74, 12.66)	0.29
<i>Education background</i>			
Bachelor	82(74.55%)	0	
College	9(8.18%)	-5.92(-19.28, 7.44)	0.39
Master	18(16.36%)	3.97(-5.94, 13.87)	0.44
Doctor	1(0.91%)	-17.37(-55.65, 20.92)	0.38
<i>Only Child of the Family</i>			
No	85(77.27%)	0	
Yes	25(22.73%)	-0.53(-9.21, 8.14)	0.90
<i>Marital Status</i>			
No	39(35.45%)	0	
Yes	71(64.55%)	-1.29(-8.88, 6.31)	0.74
<i>Childbirth status</i>			
No	44(40.00%)	0	
Yes	66(60.00%)	-1.23(-8.65, 6.18)	0.75
<i>Family relationships</i>			
Poor	6(5.45%)	0	
Good	104(94.55%)	-13.88(-29.68, 1.91)	0.09
Preparations before going to Wuhan city			
<i>Infection prevention and control knowledge</i>			
Unfamiliar	14(12.73%)	0	
Familiar	96(87.27%)	-2.85(-13.74, 8.05)	0.61
<i>COVID-19 knowledge</i>			
Unfamiliar	10(9.09%)	0	
Familiar	100(90.91%)	-3.22(-15.85, 9.41)	0.62
<i>Confidence to complete the task</i>			
No	1(0.91%)	0	
Yes	(99.09%)	6.43(-31.85, 44.71)	0.74
<i>Emergency aid experience</i>			
No	63(57.27%)	0	
Yes	47(42.73%)	5.26(-2.03, 12.54)	0.16
<i>RBT</i>			
Poor	4(3.64%)	0	
Good	106(96.36%)	-20.63(-39.65, -1.60)	0.04*
Life issues after going to Wuhan city			
<i>DC</i>			
Poor	57(51.82%)	0	
Good	53(48.18%)	11.08(4.11, 18.05)	0.00*
<i>SQ</i>			
Poor	66(60.00%)	0	
Good	44(40.00%)	-1.83(-9.25, 5.58)	0.63
<i>LROA</i>			
Unadapted	64(58.18%)	0	
Adapted	46(41.82%)	3.28(-4.06, 10.63)	0.38

<i>CAM</i>				
	NO	8(7.27%)	0	
	Yes	102(92.73%)	-4.05(-18.02, 9.93)	0.57
<i>LC</i>				
	Poor	45 (40.91%)	0	
	Good	65 (59.09%)	-0.20 (-7.59, 7.20)	0.96
<i>RC</i>				
	Good	105 (95.45%)	0	
	Poor	5 (4.55%)	3.17 (-14.27, 20.61)	0.72
<i>SEC</i>				
	Good	96 (87.27%)	0	
	Poor	14 (12.73%)	5.06 (-5.81, 15.92)	0.36
Working issues after going to Wuhan city				
<i>UWMRS</i>				
	No	24 (21.82%)	0	
	Yes	86 (78.18%)	5.70 (-3.04, 14.43)	0.20
<i>UWWE</i>				
	No	60 (54.55%)	0	
	Yes	50 (45.45%)	5.33 (-1.90, 12.56)	0.15
<i>DCWP</i>				
	No	44 (40.00%)	0	
	Yes	66 (60.00%)	6.87 (-0.43, 14.18)	0.07
<i>UWW</i>				
	No	58(52.73%)	0	
	Yes	52 (47.27%)	2.61(-4.65, 9.88)	0.48
<i>LME</i>				
	No	101(91.82%)	0	
	Yes	9(8.18%)	0.93(-12.34, 14.19)	0.89
<i>LWH</i>				
	No	104 (94.55%)	0	
	Yes	6 (5.45%)	7.36 (-8.58, 23.31)	0.37
<i>LCWT</i>				
	No	97 (88.18%)	0	
	Yes	13 (11.82%)	17.11 (6.32, 27.90)	0.00*
<i>DCWLH</i>				
	No	102 (92.73%)	0	
	Yes	8(7.27%)	0.54(-13.46, 14.54)	0.94
<i>AoBI</i>				
	No	98 (89.09%)	0	
	Yes	12(10.91%)	16.32(5.08, 27.57)	0.01*

1 Note: CI indicates confidence interval, * $P < 0.05$.

2

3

4

1
2
3
4
5
6
7

Table3 Multivariate logistic regression model for DC, LCWT, AoBI, RBT and GSI of the members

Variables in model	Non-adjusted		Adjust I		Adjust II	
	β (95%CI)	<i>P Value</i>	β (95%CI)	<i>P Value</i>	β (95%CI)	<i>P Value</i>
DC						
No	0		0		0	
Yes	11.08(4.11,18.05)	0.00*	10.85(3.61,18.09)	0.00*	10.17(3.30,17.04)	0.00*
LCWT						
No	0		0		0	
Yes	17.11(6.32,27.90)	0.00*	16.54(5.28,27.81)	0.01*	11.55(0.40,22.71)	0.04*
AoBI						
No	0		0		0	
Yes	16.32(5.08,27.57)	0.01*	15.66(4.11,27.21)	0.01*	8.51(-3.14,20.15)	0.16
RBT						
Good	0		0		0	
Poor	-20.63(-39.65,-1.60)	0.04*	-22.40(-41.89,-2.90)	0.03*	-28.09(-45.79,-10.40)	0.00*

8 Note: Non-adjusted model adjust for: None; Adjust I model adjust for: age and gender; * $P < 0.05$. DC: Adjust II
9 model adjust for: LCWT, AoBI, RBT. LCWT: Adjust II model adjust for: DC, AoBI, RBT. AoBI: Adjust II model
10 adjust for: DC, LCWT, RBT. RBT: Adjust II model adjust for: DC, LCWT, AoBI.

11
12
13
14

Table4 Stratification analysis of DC, LCWT, AoBI, RBT and GSI score of the members between genders

Exposure	Female		Male		Total	
	β (95%CI)	<i>P Value</i>	β (95%CI)	<i>P Value</i>	β (95%CI)	<i>P Value</i>
<i>Non-adjusted</i>						
DC						
No	0		0		0	
Yes	14.89 (5.94, 23.83)	0.00*	2.23 (-7.60, 12.06)	0.66	11.09 (4.10, 18.08)	0.00*
LCWT						
No	0		0		0	
Yes	17.20 (4.12, 30.27)	0.01*	15.73 (-4.17, 35.62)	0.13	16.95 (6.04, 27.86)	0.00*
AoBI						
No	0		0		0	

Yes	16.23 (2.51, 29.95) 0.02*	15.73 (-4.17, 35.62)0.13	16.14 (4.79, 27.49) 0.01*
RBT			
Good	0	0	0
Poor	-48.55 (-89.27, -7.84)0.02*	-13.13 (-29.64, 3.37)0.13	-22.40 (-41.89, -2.90) 0.03*
Adjusted <input type="checkbox"/>			
DC			
No	0	0	0
Yes	14.43 (5.08, 23.78) 0.00*	2.79 (-7.35, 12.92) 0.59	10.85 (3.61, 18.09) 0.00*
LCWT			
No	0	0	0
Yes	16.62 (3.10, 30.15) 0.02*	26.30 (4.08, 48.52) 0.03*	16.54 (5.28, 27.81) 0.01*
AoBI			
No	0	0	0
Yes	16.61 (2.55, 30.66) 0.02*	26.30 (4.08, 48.52) 0.03*	15.66 (4.11, 27.21) 0.01*
RBT			
Good	0	0	0
Poor	-47.89 (-90.74, -5.04)0.03*	-12.40 (-29.60, 4.79)0.17	-28.09(-45.79,-10.40) 0.00*
Adjusted <input type="checkbox"/>			
DC			
No	0	0	0
Yes	13.20 (4.55, 21.85) 0.00*	3.07 (-7.02, 13.16) 0.56	10.40 (3.50, 17.29) 0.00*
LCWT			
No	0	0	0
Yes	11.89 (-0.53, 24.31)0.06	15.57 (-4.61, 35.76)0.14	11.14 (-0.06, 22.35)0.054
AoBI			
No	0	0	0
Yes	8.73 (-4.34, 21.80) 0.19	15.57 (-4.61, 35.76)0.14	8.17 (-3.51, 19.86) 0.17
RBT			
Good	0	0	0
Poor	-57.85 (-94.52, -21.18)0.00*	-15.81 (-32.80, 1.18)0.08	-29.62 (-47.67, -11.57) 0.00*

1 Note: Non-adjusted model adjust for: None; Adjust I model adjust for: age; * $P < 0.05$. DC: Adjust II model adjust
 2 for: LCWT, AoBI, RBT. LCWT: Adjust II model adjust for: DC, AoBI, RBT. AoBI: Adjust II model adjust for: DC,
 3 LCWT, RBT. RBT: Adjust II model adjust for: DC, LCWT, AoBI.

4