

1 **Liver Chemistries in COVID-19 Patients with Survival or**  
2 **Death: A Meta-Analysis**

3

4 **Short title:** Liver Chemistries in COVID-19

5

6 Qing-Qing Xing<sup>1\*</sup>, Xuan Dong<sup>2\*</sup>, Yan-Dan Ren<sup>3\*</sup>, Wei-Ming Chen<sup>2</sup>, Dan-Yi Zeng<sup>2</sup>,

7 Yan-Yan Cai<sup>1</sup>, Mei-Zhu Hong<sup>4†</sup>, and Jin-Shui Pan<sup>1,2†</sup>

8

9 <sup>1</sup>Liver Research Center, the First Affiliated Hospital of Fujian Medical University,

10 Fuzhou, Fujian, China;

11 <sup>2</sup>School of Medicine, Xiamen University, Xiamen, Fujian, China;

12 <sup>3</sup>Department of Gastroenterology, Zhongshan Hospital Affiliated to Xiamen

13 University, Xiamen, Fujian, China;

14 <sup>4</sup>Department of Traditional Chinese Medicine, Zhongshan Hospital Affiliated to

15 Xiamen University, Xiamen, Fujian, China

16

17 \*These authors contributed equally to this work.

18

19 **E-mails:**

20 Qing-Qing Xing [582398903@qq.com](mailto:582398903@qq.com)

21 Xuan Dong [362485659@qq.com](mailto:362485659@qq.com)

22 Yan-Dan Ren [916659998@qq.com](mailto:916659998@qq.com)

23 Wei-Ming Chen [345173327@qq.com](mailto:345173327@qq.com)

24 Dan-Yi Zeng [1184359451@qq.com](mailto:1184359451@qq.com)

NOTE: This preprint reports new research that has not been certified by peer review and should not be used to guide clinical practice.

*Liver Chemistries in Patients with COVID-19*

25 Yan-Yan Cai [474349346@qq.com](mailto:474349346@qq.com)

26 Mei-Zhu Hong [546777397@qq.com](mailto:546777397@qq.com)

27 Jin-Shui Pan [j.s.pan76@gmail.com](mailto:j.s.pan76@gmail.com)

28

29 †**Correspondence:**

30 Jin-Shui Pan, MD, PhD

31 Liver Research Center

32 the First Affiliated Hospital of Fujian Medical University

33 No. 20 Chazhong Road,

34 Fuzhou 350001, Fujian, China.

35 E-mail: [j.s.pan76@gmail.com](mailto:j.s.pan76@gmail.com)

36

37 Mei-Zhu Hong, MD

38 Department of Traditional Chinese Medicine

39 Zhongshan Hospital Affiliated to Xiamen University

40 201 Hu-Bin Nan Road

41 Xiamen, Fujian 361004, China

42 E-mail: [546777397@qq.com](mailto:546777397@qq.com)

43 Tel: +86-592-229-2015

44

45 **Word count:** 2750

46 **Word count of abstract:** 237

47 **Number of tables:** 1; **Number of figures:** 5

48 **Number of supplementary figures:** 5

49 **ABSTRACT**

50 **Background and Aims:** Although abnormal liver chemistries are linked to higher  
51 risk of death related to coronavirus disease (COVID-19), liver manifestations may be  
52 diverse and even confused. Thus, we performed a meta-analysis of published liver  
53 manifestations and described the liver damage in COVID-19 patients with death or  
54 survival.

55 **Methods:** We searched PubMed, Google Scholar, medRxiv, bioRxiv, Cochrane  
56 Library, Embase, and three Chinese electronic databases through April 22, 2020. We  
57 analyzed pooled data on liver chemistries stratified by the main clinical outcome of  
58 COVID-19 using a fixed or random-effects model.

59 **Results:** In the meta-analysis of 18 studies, which included a total of 2,862 patients,  
60 the pooled mean alanine aminotransferase (ALT) was 30.9 IU/L in the COVID-19  
61 patients with death and 26.3 IU/L in the COVID-19 patients discharged alive ( $p <$   
62  $0.0001$ ). The pooled mean aspartate aminotransferase (AST) level was 45.3 IU/L in  
63 the COVID-19 patients with death while 30.1 IU/L in the patients discharged alive ( $p$   
64  $< 0.0001$ ). Compared with the discharged alive cases, the dead cases tended to have  
65 lower albumin levels but longer prothrombin time, and international standardized  
66 ratio.

67 **Conclusions:** In this meta-analysis, according to the main clinical outcome of  
68 COVID-19, we comprehensively described three patterns of liver impairment related  
69 to COVID-19, hepatocellular injury, cholestasis, and hepatocellular dysfunction.  
70 Patients died from COVID-19 tend to have different liver chemistries from those are  
71 discharged alive. Close monitoring of liver chemistries provides an early warning  
72 against COVID-19 related death.

73

*Liver Chemistries in Patients with COVID-19*

74 **KEYWORDS:** PRISMA, COVID-19, SARS-CoV-2, mortality, Meta-analysis

75 **Lay Summary**

76 Abnormal liver chemistries are linked to higher risk of death related to coronavirus  
77 disease (COVID-19). We performed a meta-analysis of 18 studies that included a total  
78 of 2,862 patients with COVID-19. We noted that patients died from COVID-19 tend  
79 to have different liver chemistries from those are discharged alive and close  
80 monitoring of liver chemistries provides early warning against COVID-19 related  
81 death.

82

## 83 INTRODUCTION

84 Coronavirus disease (COVID-19) is caused by severe acute respiratory syndrome  
85 coronavirus 2 (SARS-CoV-2) infection, which is non-segmented positive-sense RNA  
86 viruses with envelope that belongings to the family Coronaviridae. Coronavirus  
87 widely distributes in humans and other mammals. In the past twenty years,  
88 coronavirus has caused several localized epidemics and even global pandemics, such  
89 as severe acute respiratory syndrome (SARS), Middle East Respiratory Syndrome  
90 (MERS), and the ongoing COVID-19. Worldwide, the spread and upward trend of  
91 COVID-19 have accelerated dramatically. According to the situation report released  
92 by the World Health Organization (WHO), as of April 25, 2020, 2,719,897  
93 coronavirus disease (COVID-19) cases were confirmed globally with a fatality rate of  
94 6.9% [1]. In response to the emerging threat, the WHO has declared a Public Health  
95 Emergency of International Concern on January 30, 2020, and further labeled as a  
96 pandemic on March 11, 2020. Compared with SARS and MERS, the case fatality rate  
97 of COVID-19 is relatively lower, which are 6.8% and 60% in SARS and MERS,  
98 respectively [2, 3]. Although the case fatality rate of COVID-19 is lower than those of  
99 SARS and MERS, the reproductive numbers of COVID-19 is even higher than of  
100 SARS [4]. Due to the huge number of confirmed cases, COVID-19 causes much more  
101 deaths than SARS or MERS.

102 Apart from lung injury, COVID-19 also leads to myocardial dysfunction, liver  
103 impairment, and acute kidney injury [5, 6]. Chronic hypertension and other  
104 cardiovascular comorbidities are frequent risk factors for COVID-19 related death [6,  
105 7]. Other conditions can also contribute to death. According to the observation by Wu  
106 *et al* [7], coagulation dysfunction is linked to likelihood of death. Moreover,  
107 univariable logistic regression reveals the association between alanine

*Liver Chemistries in Patients with COVID-19*

108 aminotransferase (ALT), and total bilirubin (TBIL) and higher risk of death related to  
109 COVID-19 [8]. Another study by Fu *et al* [9] has shown the potential relationship  
110 between hypoproteinemia, cholestasis and higher fatality rate of the patients with  
111 COVID-19. Our meta-analysis also reveals the different patterns of abnormal liver  
112 chemistries between patients with severe and non-severe COVID-19 [10].  
113 According to the clinical guideline proposed by American College of  
114 Gastroenterology, liver chemistries can be classified into three groups, in other words,  
115 hepatocellular injury-related indexes, including ALT and aspartate aminotransferase  
116 (AST); cholestatic injury-related indexes, comprised of alkaline phosphatase (AKP)  
117 and  $\gamma$ -glutamyltransferase (GGT); and hepatocellular function-related indexes such as  
118 albumin (ALB) level and prothrombin time (PT) [11]. In clinical practice, TBIL and  
119 direct bilirubin (DBIL), globulin (GLB) levels, and international standardized ratio  
120 (INR) are also assessed. Clinical manifestations of COVID-19 are diverse and even  
121 confusing. Comprehensive evaluation of the abnormalities of liver chemistries in  
122 patients with COVID-19 are rather few. Hence, the aim of this study was to provide a  
123 comprehensive view of liver test parameters in the COVID-19 patients with death or  
124 survival.  
125

## 126 **METHODS**

### 127 **Studies selection**

128 The following databases were searched from December 1, 2019 to April 22, 2020,  
129 including PubMed, Google Scholar, medRxiv, bioRxiv, Embase, Cochrane Library,  
130 and three Chinese electronic databases (Chinese National Knowledge Infrastructure  
131 CQVIP, and Wanfang Data). “COVID-19”, “Coronavirus”, “SARS-CoV-2”, “2019-  
132 nCoV-2” or novel coronavirus were set as keywords for searching. The PRISMA  
133 guideline was implemented in the retrieval of potential studies[12]. Details of  
134 searching PubMed were listed in the Supplementary file. Endnote X9.3 (Thompson  
135 and Reuters, Philadelphia, Pennsylvania) was employed to manage the retrieved  
136 articles. Duplicated articles were removed.

### 137 **Selection criteria**

138 Two authors (XD and QQX) independently determined the eligibility of the potential  
139 studies. Dissonance was arbitrated by the third author (JSP). The inclusion criteria  
140 were listed as the following: (1) study population: adult COVID-19 patients with  
141 death or survival; (2) study design: case report, case series, retrospective cohort study,  
142 prospective cohort study, randomized controlled trial, and case-control study; and (3)  
143 language: studies published in English or Chinese. The exclusion criteria were as  
144 follows: (1) pregnant women or pediatric patients; (2) patients who lack of nucleic  
145 acid data or serology evidence of SARS-CoV2 infection; (3) asymptomatic patients  
146 with SARS-CoV2 infection; (3) study design: commentary, editorial, review article,  
147 meta-analysis; (4) results: Studies that only reported the percentages of the indexes  
148 related to liver chemistries rather than the mean or average values of the  
149 corresponding indices, and studies that included only one arm (for example, only data



150 of dead cases were reported without data from survival cases, or only data of survival  
151 cases were reported without data from dead cases) were also excluded.

## 152 **Data extraction**

153 For the eligible articles, the following items: first author, study location, sample size,  
154 patient age and sex, and liver chemistry-related indexes such as TBIL, DBIL, ALT,  
155 AST, GGT, AKP, and ALB levels, were recorded. The main outcome (dead or  
156 survival) of COVID-19 was also recorded.

## 157 **Data analysis**

158 R statistical platform (version 3.2.3, R Foundation for Statistical Computing) was  
159 used for statistical analysis. Continuous variables submitted to normal distribution  
160 were expressed as mean  $\pm$  SD, while median (interquartile range [IQR]) was  
161 employed for the expression of those variables conformed to a skewed distribution.  
162 The method developed by Luo et al [13] was employed to estimate the sample mean  
163 and SD for the continuous outcomes from the studies that provided summary data of  
164 median, minimum, and maximum values. Related online tool is provided at  
165 <http://www.math.hkbu.edu.hk/~tongt/papers/median2mean.html>. The 95% confidence  
166 interval (CI) was presented in Forest plot. Heterogeneity among studies was detected  
167 by the Cochran Q test, with a p value of  $<0.10$  indicating significant heterogeneity.  
168 The proportion of total variation among the studies, from which heterogeneity was  
169 derived, was measured by the  $I^2$  statistics.  $I^2$  values of  $<25\%$ ,  $25\text{--}75\%$ , and  $>75\%$   
170 represent low, moderate, and high heterogeneity, respectively [14]. Funnel plot was  
171 used to evaluate publication bias. A subgroup analysis was performed according to  
172 the main clinical outcome—death or survival.

173

174 **RESULTS**

175 **Characteristics of the studies included in the meta-analysis**

176 Selection process of potential studies was depicted in Figure 1. From the identified  
177 1,841 studies, 18 studies were included in the meta-analysis. The characteristics of the  
178 enrolled studies are listed in Table 1 [6-8, 15-29]. Information including the study  
179 location, sample size, patient age and sex, clinical outcome, TBIL, DBIL, ALT, AST,  
180 GGT, AKP, ALB, GLB, PT, and INR was recorded. The mean ages of COVID-19  
181 patients discharged alive and died were 56.4 and 68.7 years, respectively  
182 (Supplementary Figure 1). In the enrolled studies, male patients accounted for 55.3%.  
183 Among the studies that reported death cases, death case accounted for 31.6% (range,  
184 11.7–61.5%) of the cases.

185 **Hepatocellular injury-related abnormalities in liver chemistries**

186 In the enrolled studies, 14 reported assays of ALT or AST in a total of 2,365 patients  
187 with COVID-19. All of these studies were from China. In the 18 enrolled studies, 14  
188 (77.8%) were from Hubei Province, where Wuhan is located. The pooled mean ALT  
189 level was 30.9 IU/L in the COVID-19 patients with death and 26.3 IU/L in the  
190 COVID-19 patients discharged alive (95% CI: -6.1 to -2.9,  $p < 0.0001$ ; Figure 2A),  
191 with moderate heterogeneity among the studies ( $I^2 = 42\%$ ,  $p = 0.05$ ). Similarly, the  
192 pooled mean AST level was 45.3 IU/L in the COVID-19 patients with death and 30.1  
193 IU/L in the patients discharged alive (95% CI: -18.3 to -8.6,  $p < 0.0001$ ; Figure 2B).  
194 Significant heterogeneity was observed for the AST levels among the studies ( $I^2 =$   
195  $74\%$ ,  $p < 0.01$ ), which was significantly higher than that of the ALT levels ( $I^2 = 42\%$ ,  
196  $p = 0.05$ ). Potential publication bias existed in ALT/AST was evaluated using a funnel  
197 plot (Supplementary Figure 2). In the patients with COVID-19, the mean AST level

### *Liver Chemistries in Patients with COVID-19*

198 tended to be higher than the mean ALT level in both the died and discharged alive  
199 groups. Moreover, the gap between the AST and ALT levels (45.3 and 29.8 IU/L,  
200 respectively) was even more significant in the group discharged alive (Figure 3).  
201 Evaluation of potential publication bias was also presented in Supplementary Figure 3.

#### 202 **Cholestasis-related abnormalities in liver chemistries**

203 We cannot enroll enough studies to analysis cholestasis-related indexes such as AKP,  
204 and DBIL levels, since rather few studies focused on these indexes. Of the enrolled  
205 studies for the meta-analysis, 3 reported GGT assays and 11 studies reported TBIL  
206 measurements. The pooled mean GGT level was 46.3 IU/L in the group with death  
207 and 34.3 IU/L in the group discharged alive (Figure 4A). The pooled mean TBIL level  
208 in the group with death was slightly higher than that in the group discharged alive.  
209 However, the mean TBIL levels remained within the normal range in both groups  
210 (Figure 4B). For the TBIL levels, moderate heterogeneity was observed among the  
211 studies ( $I^2 = 36\%$ ,  $p = 0.11$ ). Funnel plot for the TBIL levels was shown in  
212 Supplementary Figure 4.

#### 213 **Hepatocellular function-related abnormalities in liver** 214 **chemistries**

215 Eleven studies compared the mean ALB levels according to the main clinical outcome  
216 of COVID-19, between 683 and 1,383 died and discharged alive cases, respectively  
217 (Figure 5A). High heterogeneity was observed among the studies ( $I^2 = 80\%$ ,  $p < 0.01$ ).  
218 The mean ALB level in the patients with death was significantly lower than that in the  
219 patients discharged alive. There were significant differences in the coagulation-related  
220 indexes such as PT and INR between the two groups. The patients in the group with  
221 dead had longer PT or higher INR (Figure 5B, 5C). Evaluation of publication bias  
222 related to ALB level and PT was shown in Supplementary Figure 5.

## 223 **DISCUSSION**

224 In this meta-analysis, 18 studies, all from China, consisted a total of 3,025 patients  
225 with COVID-19 were enrolled. Three patterns of liver impairment, namely  
226 hepatocellular injury, cholestasis, and hepatocellular dysfunction, can develop in  
227 proportion of patients with COVID-19, especially in the patients who eventually died.  
228 Briefly, the patients who died of COVID-19 tended to have higher baseline ALT/AST,  
229 TBIL, INR, and prolonged PT while lower ALB than the survival cases. The patients  
230 with COVID-19 usually had higher AST levels than ALT levels, especially in the  
231 non-survival. There was a tendency of the dead cases to arise in the elderly.  
232 Should be noted, the pooled percentage of death cases accounted up 31.6%, which  
233 was calculated according to the proportion of death cases in each enrolled selected  
234 study. It does not intend to mean that the percentage of death cases in the whole  
235 population reaches that high. Several reasons that may lead to the higher percentages  
236 of death cases in the enrolled study than those in the whole population. First, since the  
237 patients in the enrolled studies are all hospitalized or even critically ill patients, it  
238 sounds reasonable that the percentage of death case is higher than that in the whole  
239 population. Second, the composition difference exists in the enrolled studies caused  
240 by the selection of the reporter. Similar to our previous study, most studies focus on  
241 ALT/AST rather than cholestasis-related indexes such as AKP and GGT levels [10].  
242 In other words, the actual prevalence of abnormal liver chemistries could be  
243 underestimated in the studies reporting clinical features of COVID-19. Thus, the role  
244 of liver chemistries was compromised in disease monitoring and early warning  
245 against potential death cases.  
246 The possible mechanisms of COVID-19 related liver injury include the direct damage  
247 of SARS-CoV-2 to the liver, and the secondary liver injury caused by stress and

*Liver Chemistries in Patients with COVID-19*

248 systemic inflammatory response, liver ischemia or hypoxia, exacerbation of  
249 underlying liver disease, drug-induced liver injury [30]. In addition, for HBsAg  
250 positive patients, the following events can also lead to liver injury: sudden cessation  
251 of ongoing antiviral treatment in the patients with chronic hepatitis B patients, which  
252 may result in sharp deterioration of liver chemistries or acute-on-chronic liver failure;  
253 application of high dose corticosteroids without antiviral therapy, which may bring  
254 about activate replication of HBV. Clinically, secondary liver injury is far more  
255 frequent than direct liver injury [31].

256 The most frequent complications of deceased patients caused by COVID-19 are the  
257 following: acute respiratory distress syndrome, sepsis, acute cardiac injury, type I  
258 respiratory failure, followed by heart failure [6]. The percentage of developing acute  
259 liver injury is 9% in deceased patients whereas is only 2% in recovered patients [6].  
260 Investigation by Deng et al [17] also indicated the high frequency of developing acute  
261 respiratory distress syndrome (89.9%), acute cardiac injury (59.6%), acute kidney  
262 injury (18.3%) in the patients with death. Sepsis or liver ischemia caused by acute  
263 respiratory distress syndrome or heart failure can further bring about abnormalities of  
264 liver chemistries or even disordered coagulopathy.

265 On the whole, the alteration of liver chemistries between the survival group and non-  
266 survival group is similar to that between the severe group and the non-severe group,  
267 shown in our recent study [10], although there are some differences. Similar to the age  
268 difference between severe and non-severe group, our analysis also found that the  
269 average age of the non-survival group was significantly higher than that of survival  
270 group. The average ALT and AST in the dead group were also higher than those in  
271 the non-survival group. Moreover, both in the non-survival group and survival group,  
272 the average AST was higher than ALT, which was also similar to our previous study

*Liver Chemistries in Patients with COVID-19*

273 [10]. GGT in the non-survival group was higher than that in the survival group.  
274 However, there was no statistical significance. This may be due to the under-reported  
275 on GGT. TBIL in the non-survival group was also higher than that in the survival  
276 group whereas the average values of TBIL in both groups were all within the normal  
277 range. ALB in the non-survival group was significantly lower than that in the survival  
278 group, which was in accordance with our study between severe and non-severe group  
279 [10]. In the non-survival group, PT and INR were significantly longer than those in  
280 the survival group, which was even more remarkable than the difference we  
281 previously observed between the severe group and non-severe group. This suggests  
282 that the coagulation function of non-survival group is significantly worse than that of  
283 survival group. Since almost all of coagulation factors are synthesized in the liver, it  
284 can be speculative that the hepatocellular dysfunction in the non-survival group was  
285 exacerbated under the influence of multiple factors such as hypoxemia, inflammation  
286 storm, infection. In fact, severe sepsis is almost invariably associated with systemic  
287 activation of coagulation [32, 33].

288 In this study, we found that the abnormalities of liver chemistries in the non-survival  
289 group was worse than that in the survival group, which suggested that we should be  
290 alert to the risk of death for the patients with significantly abnormal liver chemistries  
291 on admission. Dramatical hypoalbuminemia usually developed in the non-survival  
292 group. Thus, solid nutrition support is necessary. In addition, if there is obvious  
293 coagulation dysfunction on admission, we should be aware of the risk of severe case  
294 or even death. It is necessary to correct the coagulation dysfunction as early as  
295 possible to prevent the further deterioration of the condition.

296 Several substantial merits can be seen in this study. First, the literatures focused on  
297 COVID-19 related abnormal liver chemistries are rapidly evolving and sometimes

*Liver Chemistries in Patients with COVID-19*

298 confusing. This meta-analysis comprehensively summarized the related literatures  
299 according to the main clinical outcome—death or survival. The extensive coverage of  
300 over 2,800 studies allowed a more precise evaluation of the abnormalities of liver  
301 chemistries in the patients with COVID-19. Our analysis revealed that abnormal liver  
302 chemistries were associated with a worse clinical outcome and even death, which  
303 highlights the importance of a more extensive monitoring on liver chemistries for the  
304 purposes of both diagnosis and prognosis. Second, three patterns of liver impairment,  
305 namely hepatocellular injury, cholestasis, and hepatocellular dysfunction were all  
306 extensively covered in this analysis. However, cholestasis-related indices such as  
307 AKP and GGT tended to be inadvertently ignored, which is even more significant  
308 than that in our previous study [10]. We also compared hepatocellular dysfunction  
309 between the survival and non-survival cases. The alarmingly high prevalence of  
310 hypoalbuminemia and coagulation dysfunction in the non-survival group requires  
311 vigilance. Third, we also covered the eligible studies preprinted in medRxiv, which  
312 ensured that our meta-analysis has a clear leading position. However, our study has a  
313 few limitations. As mentioned earlier, cholestasis-related indices were remarkably  
314 under-reported, which hindered us from getting more precise pooled data. Second, all  
315 the enrolled studies came from mainland China, which restricted a more precise  
316 estimation of abnormal liver chemistries in the context of diverse other ethnics.  
317 However, this conversely helps to abate the heterogeneity caused by the physiological  
318 differences.

319

320 **CONCLUSION**

321 In this analysis, we comprehensively described three patterns of liver impairment  
322 related to COVID-19 including hepatocellular injury, cholestasis, and hepatocellular  
323 dysfunction, according to the main clinical outcome of COVID-19. Patients with  
324 abnormal liver chemistries are at higher risk of worse outcome. Close monitoring on  
325 liver chemistries, especially coagulation-related indexes, is beneficial to early warning  
326 against worse outcome.

327



328 **Acknowledgments**

329 **Financial support:** This work was supported by the National Natural Science  
330 Foundation of China No. 81871645 (JSP). The funding source did not have any role  
331 in the design and conduct of the study; collection, management, analysis, and  
332 interpretation of the data; preparation, review, or approval of the manuscript; and  
333 decision to submit the manuscript for publication.

334 **Guarantor of the article:** Professor Jin-Shui Pan

335 **Specific author contributions:** JSP and MZH were involved with the study  
336 conceptualization and design; analysis and interpretation of data; drafting of the  
337 manuscript; and approval of the final version of the manuscript; XD, DYZ, YYC,  
338 WMC, QQX, and YDR were involved in data retrieval.

339 **Potential competing interests:** None.

Table 1. Characteristics of the enrolled studies for meta-analysis

Study	Location	Number	Age [(mean±SD, or median (IQR))]	Male, number (%)	Died, number (%)	TBIL [(mean±SD, or median (IQR))]	DBIL [(mean±SD, or median (IQR))]	ALT [(mean±SD, or median (IQR))]	AST [(mean±SD, or median (IQR))]
Luo X <sup>[21]</sup>	Hubei	403	56.0 (39.0–68.0)	193 (47.9)	100 (40.3)	12.8 (10.0–17.5)	NA	NA	NA
Chen T <sup>[15]</sup>	Hubei	55	74.0 (65.0–91.0)	34 (61.8)	19 (34.5)	NA	NA	41.3 (8.0–279.0)	63.1 (18.0–209.0)
Chen T <sup>[6]</sup>	Hubei	274	62.0 (44.0–70.0)	171 (62.4)	113 (41.2)	9.6 (6.7–13.5)	NA	23.0 (15.0–38.0)	30.0 (22.0–46.0)
Deng Y <sup>[17]</sup>	Hubei	225	NA	124 (55.1)	109 (48.4)	NA	NA	NA	NA
Ruan Q <sup>[22]</sup>	Hubei	150	NA	NA	68 (45.3)	15.2±9.1	NA	NA	NA
Du R <sup>[18]</sup>	Hubei	179	57.6±13.7	97 (54.2)	21 (11.7)	8.9 (6.6–12.5)	2.5 (1.8–3.9)	22.0 (15.0–40.0)	30.0 (19.0–43.0)
Wang L <sup>[24]</sup>	Hubei	339	69.0 (65.0–76.0)	166 (49.0)	65 (19.2)	NA	NA	27.0 (17.0–44.0)	32.0 (23.0–46.0)
Zhou F <sup>[29]</sup>	Hubei	191	56.0 (46.0–67.0)	119 (62.3)	54 (28.3)	NA	NA	30.0 (17.0–46.0)	NA
Li K <sup>[20]</sup>	Hubei	102	57.0 (45.0–70.0)	59 (57.8)	15 (14.7)	8.5 (6.6–11.6)	NA	23.0 (14.0–34.3)	26.0 (19.0–41.8)
Wang Y <sup>[25]</sup>	Jiangsu	344	64.0 (52.0–72.0)	179 (52.0)	133 (38.7)	10.2 (7.3–14.2)	NA	24.0 (15.0–38.0)	31.0 (22.0–47.0)
Fu L <sup>[8]</sup>	Anhui	200	60.0 (48.0–66.0)	99 (49.5)	34 (17.0)	11.4 (9.0–15.6)	3.3 (2.3–5.0)	23.5 (16.0–42.0)	35.0 (23.4–56.8)
Zhang F <sup>[28]</sup>	Hubei	48	70.6±13.4	33 (68.8)	17 (35.4)	NA	NA	21.0 (12.5–34.0)	32.0 (22.0–51.8)
Yang X <sup>[27]</sup>	Hubei	52	59.7±13.3	35 (67.3)	32 (61.5)	17.0±9.9	NA	NA	NA

Wu C <sup>[7]</sup>	Hubei	84	58.5 (50.0–69.0)	60 (71.4)	44 (52.4)	12.9 (9.5–17.1)	NA	35.0 (21.5–52.5)	38.0 (30.5–53.0)
Fu Y <sup>[19]</sup>	Chongqing	85	64.0 (54.5–70.0)	49 (57.6)	14 (16.5)	NA	NA	29.0 (20.0–55.0)	NA
Hu C <sup>[16]</sup>	Hubei	183	NA	107 (58.5)	68 (37.2)	11.3±5.6	NA	28.1±20.0	NA
Xu Y <sup>[26]</sup>	Shanghai	10	NA	6 (60.0)	2 (20.0)	NA	NA	24.0 (20.0–39.0)	26.0 (21.0–33.0)
Shi Q <sup>[23]</sup>	Hubei	101	71.0 (59.0–80.0)	60 (59.4)	48 (47.5)	12.0 (8.4–19.1)	NA	25.0 (18.0–48.3)	41.5 (29.0–64.5)

#### Characteristics of the enrolled studies for meta-analysis (continued)

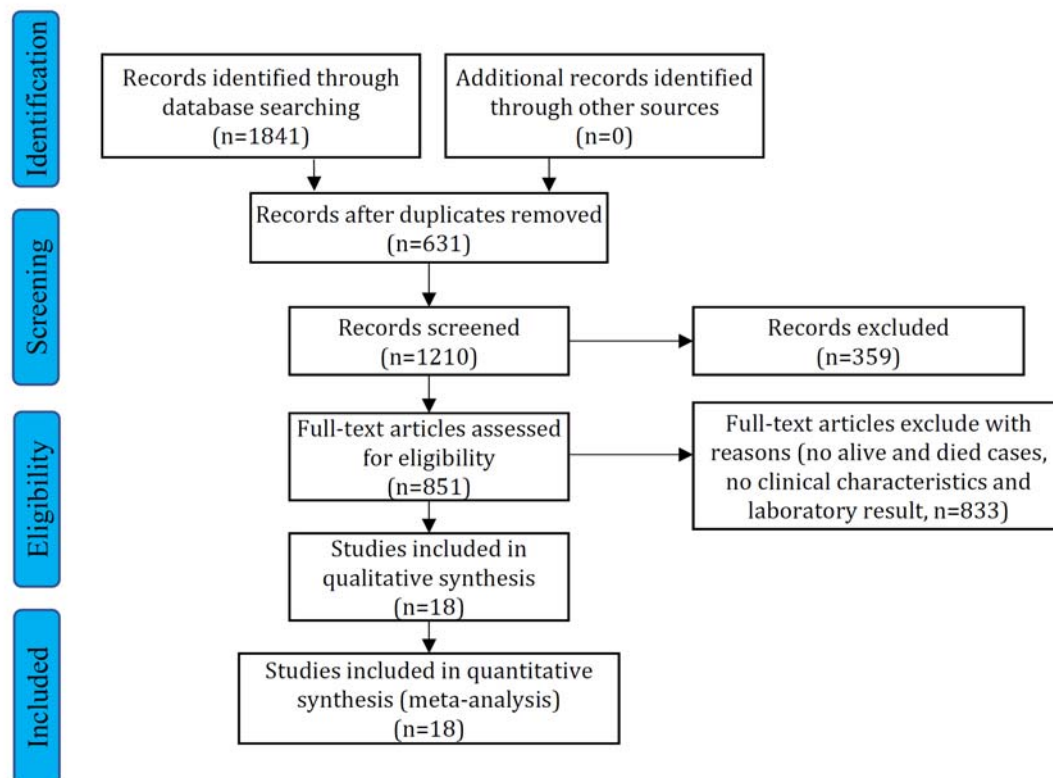
Study	Location	Number	GGT [(mean±SD, AKP [(mean±SD, or ALB [(mean±SD, GLB [(mean±SD, PT [(mean±SD, or INR [(mean±SD, or or median (IQR)] median (IQR)] or median (IQR)] or median (IQR)] median (IQR)] median (IQR)]					
Luo X <sup>[21]</sup>	Hubei	403	NA	NA	37.4 (33.3–40.8)	NA	NA	NA
Chen T <sup>[15]</sup>	Hubei	55	NA	NA	33.3 (25.0–43.0)	30.0 (20.0–48.0)	NA	NA
Chen T <sup>[6]</sup>	Hubei	274	33.0 (21.0–51.0)	68.0 (55.0–87.0)	33.9 (30.3–37.6)	NA	14.3 (13.4–15.4)	1.1 (1.0–1.2)
Deng Y <sup>[17]</sup>	Hubei	225	NA	NA	NA	NA	NA	NA
Ruan Q <sup>[22]</sup>	Hubei	150	NA	NA	30.9±4.3	NA	11.1 (10.1–12.4)	NA
Du R <sup>[18]</sup>	Hubei	179	29.0 (17.0–52.5)	NA	33.2 (30.7–36.4)	NA	13.7 (12.4–15.4)	NA
Wang L <sup>[24]</sup>	Hubei	339	NA	NA	NA	NA	12.1 (11.6–12.7)	NA
Zhou F <sup>[29]</sup>	Hubei	191	NA	NA	32.3.0 (29.1–35.8)	NA	11.6 (10.6–13.0)	NA

*Liver Chemistries in Patients with COVID-19*

Li K <sup>[20]</sup>	Hubei	102	NA	NA	34.8 (31.7–39.5)	NA	14.2 (13.7–14.8)	1.08 (1.04–1.15)
Wang Y <sup>[25]</sup>	Jiangsu	344	NA	NA	34.0 (30.0–37.0)	NA	14.3 (13.5–15.4)	1.1 (1.0–1.2)
Fu L <sup>[8]</sup>	Anhui	200	NA	NA	NA	NA	NA	NA
Zhang F <sup>[28]</sup>	Hubei	48	NA	NA	NA	NA	NA	NA
Yang X <sup>[27]</sup>	Hubei	52	NA	NA	NA	NA	12.2±3.0	NA
Wu C <sup>[7]</sup>	Hubei	84	NA	NA	30.4 (27.2–33.4)	31.6 (29.4–35.1)	11.7 (11.1–12.5)	NA
Fu Y <sup>[19]</sup>	Chongqing	85	NA	NA	NA	NA	NA	NA
Hu C <sup>[16]</sup>	Hubei	183	44.1±41.7	73.2±30.3	33.9±5.6	NA	14.5±1.9	NA
Xu Y <sup>[26]</sup>	Shanghai	10	NA	NA	NA	NA	12.3 (11.7–13.1)	NA
Shi Q <sup>[23]</sup>	Hubei	101	NA	NA	33.0 (30.3–36.4)	NA	12.8 (12.0–14.0)	NA

340 Abbreviations: SD, standard deviation; IQR, interquartile range; TBIL, total bilirubin; DBIL, direct bilirubin; ALT, alanine aminotransferase; AST, aspartate  
 341 aminotransferase; GGT,  $\gamma$ -Glutamyltransferase; AKP, alkaline phosphatase; ALB, albumin; GLB, globulin; PT, prothrombin time; INR, international standardized ratio;  
 342 NA, not available.

343 **FIGURE LEGENDS**



344

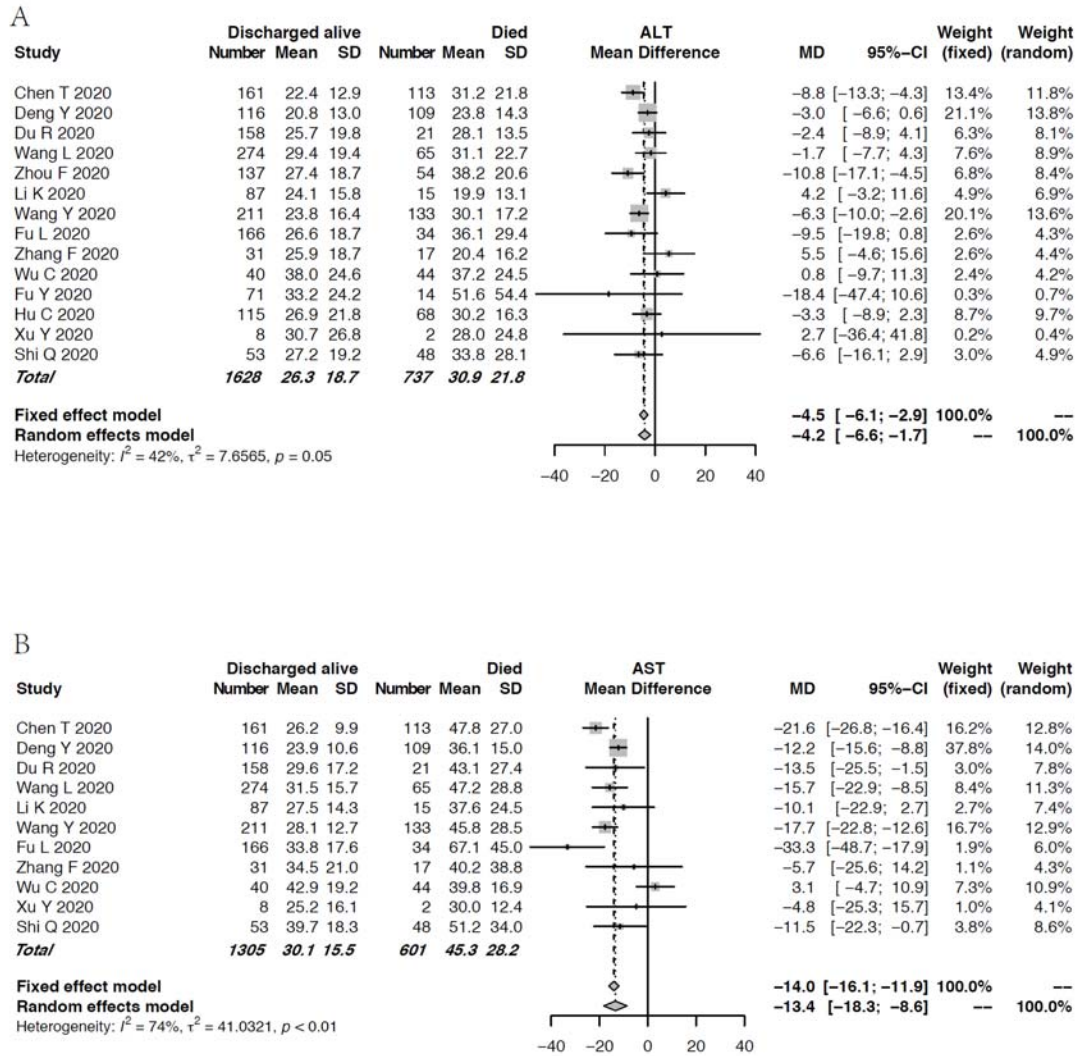
345 Figure 1. Study selection flow diagram

346 If all the liver chemistry indexes were not reported, they were excluded from the  
347 meta-analysis. The studies that included only one arm (for example, only data of dead  
348 cases were reported without data from survival cases, or only data of survival cases  
349 were reported without data from dead cases) were also excluded.

350

351

*Liver Chemistries in Patients with COVID-19*



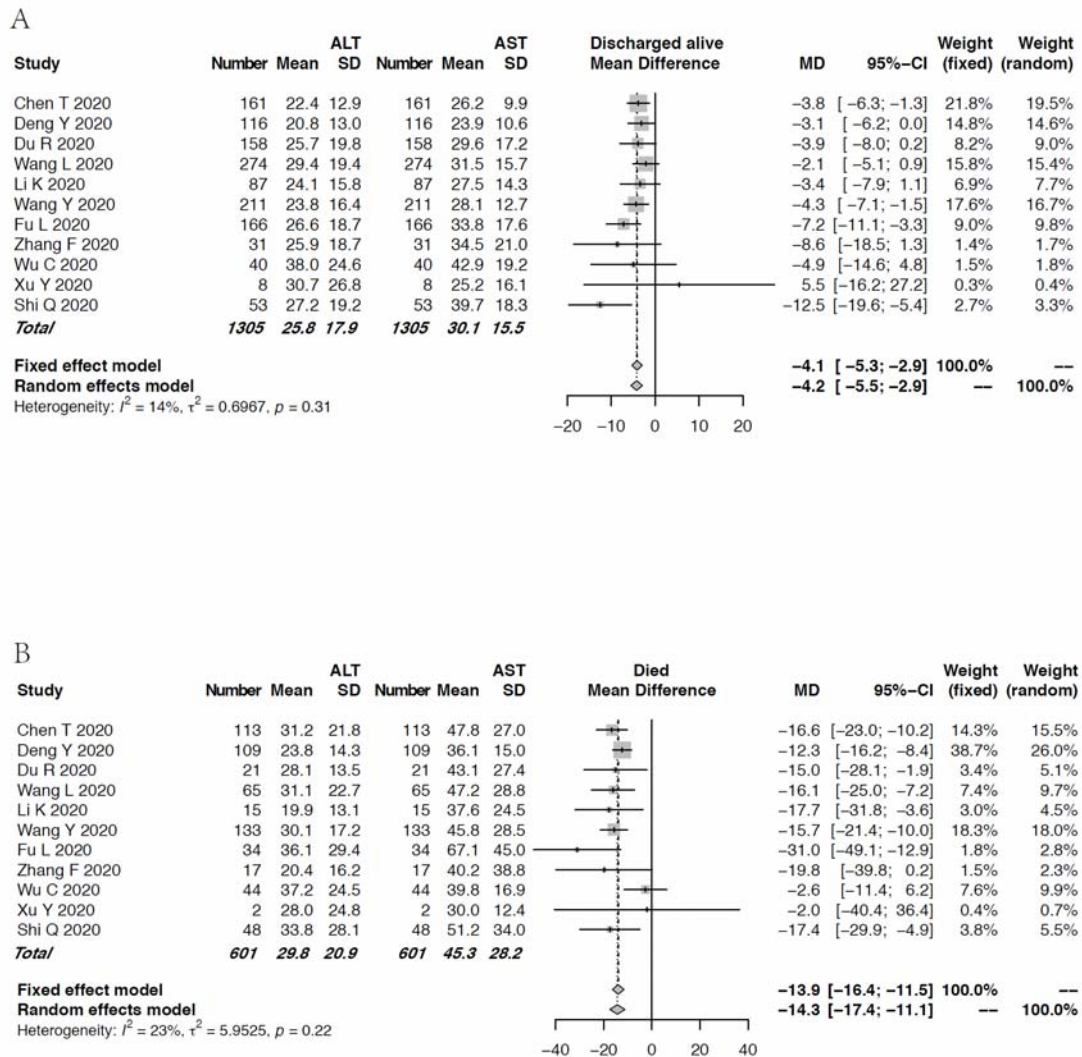
352

353 Figure 2. Forest plot of the association between serum ALT/AST level and the main  
 354 clinical outcomes—died or discharged alive.

355 Pooled levels of (A) ALT and (B) AST in the patients with COVID-19 stratified by  
 356 clinical outcome.

357 Abbreviations: ALT, alanine aminotransferase; AST, aspartate aminotransferase.

*Liver Chemistries in Patients with COVID-19*



358

359 Figure 3. Forest plot for the comparison of ALT and AST levels in the patients with  
 360 COVID-19 stratified by clinical outcome

361 A, Forest plot for the comparison of ALT and AST levels in the group discharged  
 362 alive. B, Forest plot for the comparison of ALT and AST levels in the group with  
 363 death.

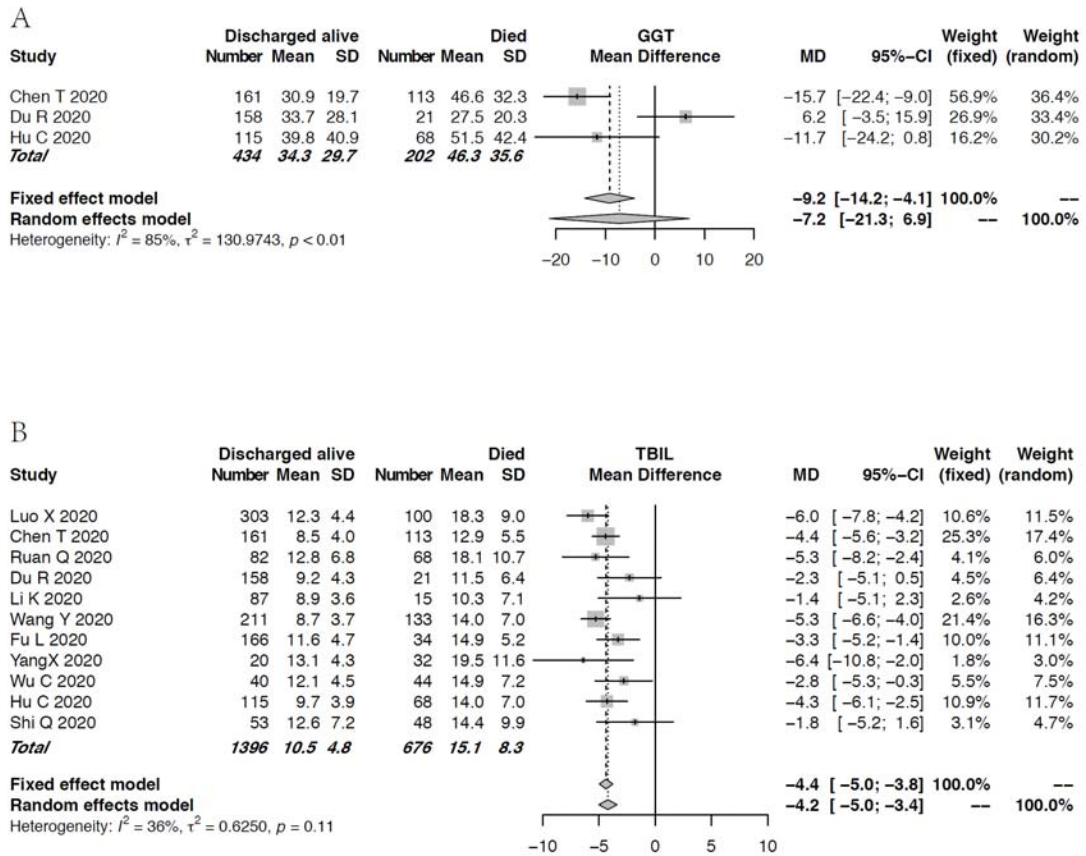
364 Abbreviations: ALT, alanine aminotransferase; AST, aspartate aminotransferase.

365

366



*Liver Chemistries in Patients with COVID-19*



367

368 Figure 4. Forest plot for the association of the cholestasis-related indexes and clinical  
 369 outcome.

370 Pooled levels of (A) GGT, and (B) TBIL in the patients with COVID-19.

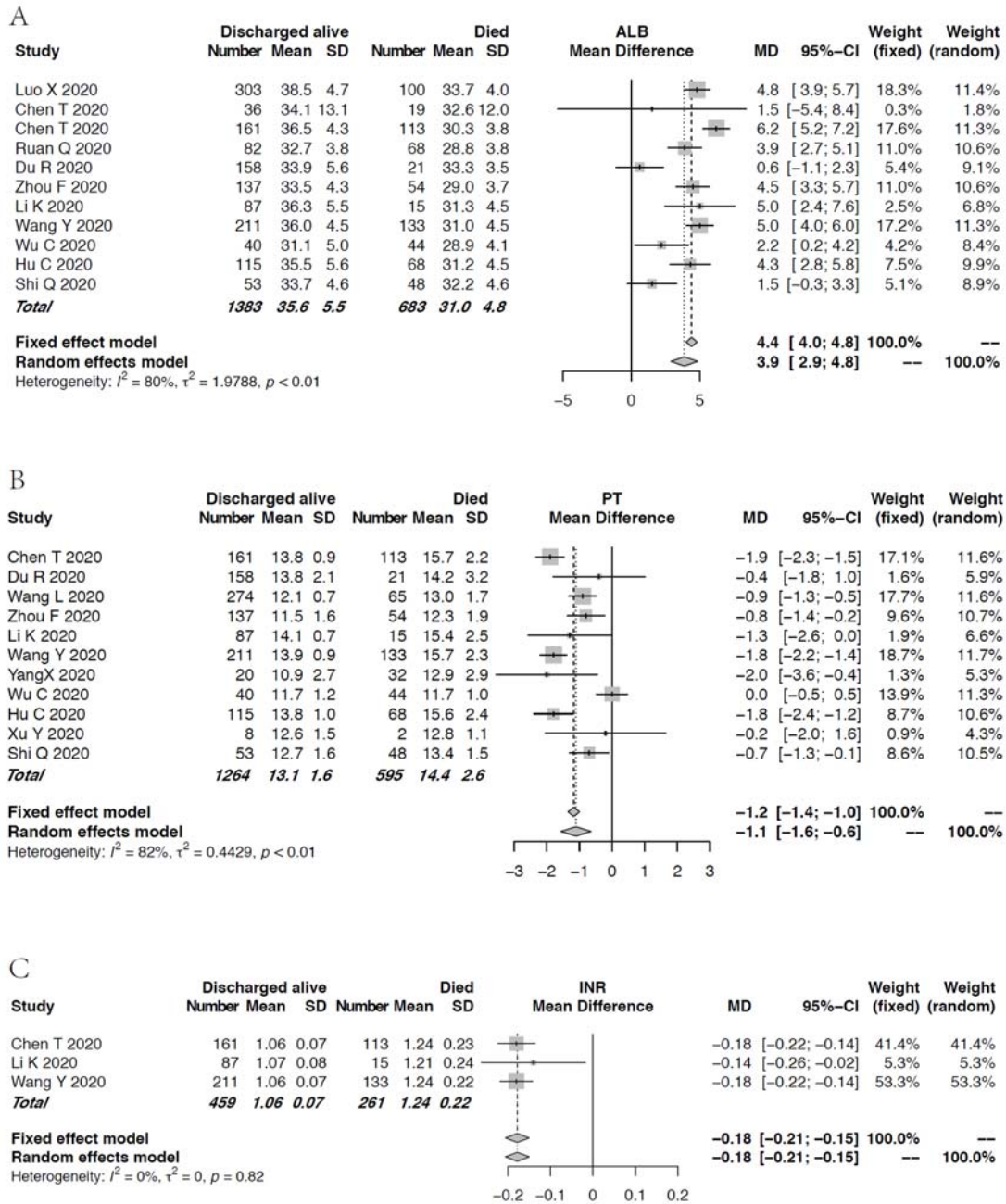
371 Abbreviations: GGT,  $\gamma$ -Glutamyltransferase; TBIL, total bilirubin.

372

373



*Liver Chemistries in Patients with COVID-19*



374

375 Figure 5. Forest plot for the association of the synthetic function-related indexes and

376 clinical outcome

377 Pooled (A) ALB levels, (B) PTs, and (C) INRs in the patients with COVID-19.

378 Abbreviations: ALB, albumin; PT, prothrombin time; INR, international standardized

379 ratio.

380

381 **REFERENCES**

- 382 [1] World Health Organization. Coronavirus disease 2019 (COVID-19) Situation  
383 Report–96. World Health Organization; 25 April 2020.
- 384 [2] Donnelly CA, Ghani AC, Leung GM, Hedley AJ, Fraser C, Riley S, et al.  
385 Epidemiological determinants of spread of causal agent of severe acute respiratory  
386 syndrome in Hong Kong. *Lancet* 2003;361:1761-1766.
- 387 [3] Assiri A, Al-Tawfiq JA, Al-Rabeeh AA, Al-Rabiah FA, Al-Hajjar S, Al-Barrak A,  
388 et al. Epidemiological, demographic, and clinical characteristics of 47 cases of  
389 Middle East respiratory syndrome coronavirus disease from Saudi Arabia: a  
390 descriptive study. *Lancet Infect Dis* 2013;13:752-761.
- 391 [4] Liu Y, Gayle AA, Wilder-Smith A, Rocklöv J. The reproductive number of COVID-  
392 19 is higher compared to SARS coronavirus. *J Travel Med* 2020;27.
- 393 [5] Guan WJ, Ni ZY, Hu Y, Liang WH, Ou CQ, He JX, et al. Clinical Characteristics of  
394 Coronavirus Disease 2019 in China. *N Engl J Med* 2020.
- 395 [6] Chen T, Wu D, Chen H, Yan W, Yang D, Chen G, et al. Clinical characteristics of  
396 113 deceased patients with coronavirus disease 2019: retrospective study. *BMJ*  
397 2020;368:m1091.
- 398 [7] Wu C, Chen X, Cai Y, Xia J, Zhou X, Xu S, et al. Risk Factors Associated With  
399 Acute Respiratory Distress Syndrome and Death in Patients With Coronavirus  
400 Disease 2019 Pneumonia in Wuhan, China. *JAMA Intern Med* 2020.
- 401 [8] Fu L, Fei J, Xiang H-X, Xiang Y, Tan Z-X, Li M-D, et al. Influence factors of death  
402 risk among COVID-19 patients in Wuhan, China: a hospital-based case-cohort study.  
403 2020:2020.2003.2013.20035329.
- 404 [9] Fu L, Fei J, Xu S, Xiang HX, Xiang Y, Tan ZX, et al. Acute liver injury and its  
405 association with death risk of patients with COVID-19: a hospital-based prospective  
406 case-cohort study. *medRxiv* 2020:2020.2004.2002.20050997.
- 407 [10] Dong X, Zeng DY, Cai YY, Chen WM, Xing QQ, Ren YD, et al. Liver Chemistries

*Liver Chemistries in Patients with COVID-19*

- 408 in Patients with Severe or Non-severe COVID-19: A Meta-Analysis (unpublished  
409 data). 2020.
- 410 [11] Kwo PY, Cohen SM, Lim JK. ACG Clinical Guideline: Evaluation of Abnormal  
411 Liver Chemistries. *Am J Gastroenterol* 2017;112:18-35.
- 412 [12] Liberati A, Altman DG, Tetzlaff J, Mulrow C, Gotzsche PC, Ioannidis JP, et al. The  
413 PRISMA statement for reporting systematic reviews and meta-analyses of studies that  
414 evaluate healthcare interventions: explanation and elaboration. *BMJ* 2009;339:b2700.
- 415 [13] Luo D, Wan X, Liu J, Tong T. How to estimate the sample mean and standard  
416 deviation from the sample size, median, extremes or quartiles? *Chinese Journal of  
417 Evidence-Based Medicine* 2017;17:1350-1356.
- 418 [14] Higgins JP, Thompson SG. Quantifying heterogeneity in a meta-analysis. *Stat Med*  
419 2002;21:1539-1558.
- 420 [15] Chen T, Dai Z, Mo P, Li X, Ma Z, Song S, et al. Clinical characteristics and  
421 outcomes of older patients with coronavirus disease 2019 (COVID-19) in Wuhan,  
422 China (2019): a single-centered, retrospective study. *J Gerontol A Biol Sci Med Sci*  
423 2020.
- 424 [16] Chuanyu Hu ZL, Yanfeng Jiang, Xin Zhang, Oumin Shi, Kelin Xu, Chen Suo, Qin  
425 Wang, Yujing Song, Kangkang Yu, Xianhua Mao, Xuefu Wu, Mingshan Wu,  
426 Tingting Shi, Wei Jiang, Lina, Damien C Tully Lei Xu, Li Jin, Shusheng Li, Xuejin  
427 Tao, Tiejun Zhang, Xingdong Chen. Early prediction of mortality risk among severe  
428 COVID-19 patients using machine learning. 2020:2020.2004.2013.20064329.
- 429 [17] Deng Y, Liu W, Liu K, Fang YY, Shang J, Zhou L, et al. Clinical characteristics of  
430 fatal and recovered cases of coronavirus disease 2019 (COVID-19) in Wuhan, China:  
431 a retrospective study. *Chin Med J (Engl)* 2020.
- 432 [18] Du RH, Liang LR, Yang CQ, Wang W, Cao TZ, Li M, et al. Predictors of Mortality  
433 for Patients with COVID-19 Pneumonia Caused by SARS-CoV-2: A Prospective  
434 Cohort Study. *Eur Respir J* 2020.

*Liver Chemistries in Patients with COVID-19*

- 435 [19] Fu Y-q, Sun Y-l, Lu S-w, Yang Y, Wang Y, Xu F. Impact of blood analysis and  
436 immune function on the prognosis of patients with COVID-19. medRxiv  
437 2020:2020.2004.2016.20067587.
- 438 [20] Li K, Chen D, Chen S, Feng Y, Chang C, Wang Z, et al. Radiographic Findings and  
439 other Predictors in Adults with Covid-19. 2020.
- 440 [21] Luo X, Xia H, Yang W, Wang B, Guo T, Xiong J, et al. Characteristics of patients  
441 with COVID-19 during epidemic ongoing outbreak in Wuhan, China.  
442 2020:2020.2003.2019.20033175.
- 443 [22] Ruan Q, Yang K, Wang W, Jiang L, Song J. Clinical predictors of mortality due to  
444 COVID-19 based on an analysis of data of 150 patients from Wuhan, China.  
445 Intensive Care Med 2020.
- 446 [23] Shi Q, Zhao K, Yu J, Jiang F, Feng J, Zhao K, et al. Clinical characteristics of 101  
447 non-surviving hospitalized patients with COVID-19: A single center, retrospective  
448 study. medRxiv 2020:2020.2003.2004.20031039.
- 449 [24] Wang L, He W, Yu X, Hu D, Bao M, Liu H, et al. Coronavirus disease 2019 in  
450 elderly patients: Characteristics and prognostic factors based on 4-week follow-up. J  
451 Infect 2020.
- 452 [25] Wang Y, Lu X, Chen H, Chen T, Su N, Huang F, et al. Clinical Course and Outcomes  
453 of 344 Intensive Care Patients with COVID-19. Am J Respir Crit Care Med 2020.
- 454 [26] Xu Y. Dynamic profile of severe or critical COVID-19 cases. medRxiv 2020.
- 455 [27] Yang X, Yu Y, Xu J, Shu H, Xia J, Liu H, et al. Clinical course and outcomes of  
456 critically ill patients with SARS-CoV-2 pneumonia in Wuhan, China: a single-  
457 centered, retrospective, observational study. Lancet Respir Med 2020.
- 458 [28] Zhang F, Yang D, Li J, Gao P, Chen T, Cheng Z, et al. Myocardial injury is  
459 associated with in-hospital mortality of confirmed or suspected COVID-19 in Wuhan,  
460 China: A single center retrospective cohort study. medRxiv  
461 2020:2020.2003.2021.20040121.

*Liver Chemistries in Patients with COVID-19*

- 462 [29] Zhou F, Yu T, Du R, Fan G, Liu Y, Liu Z, et al. Clinical course and risk factors for  
463 mortality of adult inpatients with COVID-19 in Wuhan, China: a retrospective cohort  
464 study. *Lancet* 2020;395:1054-1062.
- 465 [30] Chinese Digestion Association Chinese Medical Doctor Association, Chinese Society  
466 of Hepatology Chinese Medical Association. The protocol for prevention, diagnosis  
467 and treatment of liver injury in coronavirus disease 2019. *Zhonghua Gan Zang Bing*  
468 *Za Zhi* 2020;28:217-221.
- 469 [31] Hu LL, Wang WJ, Zhu QJ, Yang L. Novel coronavirus pneumonia related liver injury:  
470 etiological analysis and treatment strategy. *Zhonghua Gan Zang Bing Za Zhi*  
471 2020;28:E001.
- 472 [32] Iba T, Levy JH. Inflammation and thrombosis: roles of neutrophils, platelets and  
473 endothelial cells and their interactions in thrombus formation during sepsis. *J Thromb*  
474 *Haemost* 2018;16:231-241.
- 475 [33] Levi M, van der Poll T. Coagulation and sepsis. *Thromb Res* 2017;149:38-44.  
476  
477