

PREP UPTAKE AMONG NPEP USERS IN MONTRÉAL

1 **Pre-exposure prophylaxis uptake among users of non-occupational post-**
2 **exposure prophylaxis: a longitudinal analysis of attendees at a large sexual**
3 **health clinic in Montréal**

4
5 **Authors:** Xia, Yiqing MSc¹; Greenwald, R. Zoë PhD^{2, 3}; Milwid, M. Rachael PhD¹;
6 Trottier, Claire DCS³; Boissonnault, Michel MD³; Gaul, Neil MD³; Charest, Louise MD³;
7 Landry, Gabrielle MD³; Zahedi, N. Navid MD³; Szabo, Jason MD^{3,4}; Thomas, Réjean
8 MD³; Maheu-Giroux, Mathieu PhD¹

9
10 **Affiliations:**

11 (1) Department of Epidemiology, Biostatistics, and Occupational Health, School of
12 Population and Global Health, McGill University, Montréal, QC, Canada

13 (2) Department of Epidemiology, Dalla Lana School of Public Health, University of
14 Toronto, Toronto, ON, Canada

15 (3) Clinique médicale l'Actuel, Montréal, QC, Canada

16 (4) Centre universitaire de santé McGill (CUSM), Montréal, QC, Canada

17 **Correspondence to:**

18 Mathieu Maheu-Giroux, PhD

19 Department of Epidemiology, Biostatistics, and Occupational Health

20 School of Population and Global Health, McGill University

21 1020 Pine Avenue West, Montreal, QC, Canada

PREP UPTAKE AMONG NPEP USERS IN MONTRÉAL

22 H3A 1A2

23 E-mail: mathieu.maheu-giroux@mcgill.ca

24 Phone: (+1) 514-398-5110

25

26 **Conference presentation:**

27 This paper will be presented at the 29th Annual Canadian Conference on HIV / AIDS
28 Research; May 2020; Québec city, QC, Canada.

29 **Funding:**

30 This work was supported by the *Canadian Foundation for AIDS Research* and the
31 *Canadian Institutes of Health Research*. MM-G's research programs was funded by
32 career awards from the *Fonds de recherche du Québec – Santé*.

33 **Conflict of Interest Statement:**

34 In the past years l'Actuel PrEP databank has received funding from ViiV Healthcare
35 (2016) and *Gilead Sciences Inc.* (2018, 2019). L'Actuel PEP databank has received
36 funding from ViiV Healthcare (2016). MM-G reports an investigator-sponsored research
37 grant from *Gilead Sciences Inc.* outside of the submitted work and contractual
38 arrangements from both the *World Health Organization* and the *Joint United Nations*
39 *Programme on HIV/AIDS* (UNAIDS), also outside of the submitted work.

40

PREP UPTAKE AMONG NPEP USERS IN MONTRÉAL

41 **Abstract (249 words)**

42 **Background:** Reducing HIV transmission using pre-exposure prophylaxis (PrEP)
43 requires targeting individuals at high acquisition risk, such as men who have sex with
44 men (MSM) with a history of non-occupational post-exposure prophylaxis (nPEP). This
45 study aims to characterize longitudinal trends in PrEP uptake and its determinants
46 among nPEP users in Montréal.

47 **Methods:** Eligible attendees at *Clinique médicale l'Actuel* were recruited prospectively
48 starting in October 2000 (nPEP) and January 2013 (PrEP). Linking these cohorts, we
49 characterized the PEP-to-PrEP cascade, examined the determinants of PrEP uptake
50 after nPEP consultation using a Cox proportional-hazard model, and assessed whether
51 PrEP persistence differed by nPEP history using Kaplan-Meier curves.

52 **Results:** As of August 2019, 31% of 2,682 MSM nPEP cohort participants had two or
53 more nPEP consultations. Subsequent PrEP consultations occurred among 36% of
54 nPEP users, of which 17% sought nPEP again afterwards. Among 2,718 PrEP cohort
55 participants, 46% reported previous nPEP use. Among nPEP users, those aged 25-49
56 years (Hazard Ratio (HR)=1.3, 95% confidence interval (CI): 1.1-1.7), with more nPEP
57 episodes (HR=1.4, 95%CI: 1.3-1.5), reported chemsex (HR=1.3, 95%CI: 1.1-1.7), with a
58 STI history (HR=1.5; 95%CI: 1.3-1.7), and who returned for their first nPEP follow-up
59 visit (HR=3.4, 95%CI: 2.7-4.2) had higher rates of PrEP linkage. There was no
60 difference in PrEP persistence between PEP-to-PrEP and PrEP only participants.

61 **Conclusion:** Over one-third of nPEP users were subsequently prescribed PrEP.
62 However, the large proportion of men who repeatedly use nPEP calls for more efficient

PREP UPTAKE AMONG NPEP USERS IN MONTRÉAL

63 PrEP-linkage services and, among those that use PrEP, improved persistence should
64 be encouraged.

65 **Keywords:** HIV prevention; non-occupational post-exposure prophylaxis (PEP); pre-
66 exposure prophylaxis; biomedical prevention; HIV/AIDS; nPEP to PrEP.

PREP UPTAKE AMONG NPEP USERS IN MONTRÉAL

67 **Introduction**

68 In 2016, there were an estimated 2,165 new HIV infections in Canada, of which
69 approximately half occurred among gay, bisexual, and other men who have sex with
70 men (gbMSM) [1]. Worldwide, the risk of HIV infection is 27 times higher in gbMSM than
71 the general population [2]. Addressing the unmet prevention needs of key populations at
72 high risk of HIV acquisition and transmission -such as gbMSM- remains a priority. In
73 2017 Montréal signed the Paris declaration and, shortly after, became the first Canadian
74 city to adopt the UNAIDS Fast-Track City target of zero new HIV infections by 2030 [3].
75 This ambitious objective will require strengthening the HIV treatment and care cascade
76 and, crucially, must address unmet HIV prevention needs.

77 Non-occupational post-exposure prophylaxis (nPEP) and pre-exposure prophylaxis
78 (PrEP) are two strategies for reducing the risk of HIV acquisition which, when combined
79 with other intervention strategies, could have the potential to achieve HIV elimination [4].
80 nPEP involves taking a 28-day course of highly active antiretroviral tri-therapy following
81 an event that could carry a moderate/high risk of acquisition (initiated within 72 hours of
82 exposure). It was first implemented following occupational exposure in the early 1990s
83 and was later extended to non-occupational situations such as sexual contacts [5]. In
84 contrast, PrEP was recommended by the World Health Organization in 2012 as a
85 strategy for adults who are at a high, ongoing risk of HIV infection [6]. It can be taken
86 daily, or for gbMSM, intermittently (known as “*on demand PrEP*”) [4 7 8]. Randomized
87 control trials among gbMSM have estimated an overall PrEP effectiveness of 86% [7 9-
88 11] for preventing sexual transmission which could reach 99% for those who are
89 perfectly adherent to treatment guidelines [12].

PREP UPTAKE AMONG NPEP USERS IN MONTRÉAL

90 Contrary to the use of nPEP as an emergency measure, it is recommended that those
91 who seek nPEP repeatedly, or are at an ongoing risk of HIV acquisition, be evaluated
92 for possible PrEP use [13-16]. However, emerging evidence suggests that uptake of
93 PrEP among gbMSM who have repeatedly used nPEP is suboptimal [17]. With the
94 Fast-Track city goal of zero new HIV infections, it is crucial to limit these missed
95 prevention opportunities. In 2013, Québec became the first Canadian province to
96 recommend PrEP and fund it using public budgets. Using 6 years of longitudinal data on
97 sexual health clinic attendees, the overarching aim of this study is to characterize the
98 PEP-to-PrEP corridor and identify potential barriers to linkage. Specifically, we will: 1)
99 describe longitudinal trends in nPEP and PrEP use, 2) estimate the time from nPEP to
100 PrEP and the determinants of PrEP uptake by nPEP users, and 3) compare the
101 differences in PrEP persistence between participants with and without a history of nPEP
102 use. These results could help limit missed HIV prevention opportunities among gbMSM.

103 **Methods**

104 **Study setting**

105 *Clinique médicale l'Actuel* (l'Actuel) is a Montréal-based, sexual health clinic
106 specializing in HIV treatment and prevention, predominantly among gbMSM. The clinic
107 is one of the largest nPEP and PrEP providers in Canada and was one of the first clinics
108 to prescribe nPEP (August 2000) and PrEP (January 2013). Attendees at l'Actuel
109 seeking nPEP and PrEP were recruited prospectively from August 2000 for the nPEP
110 cohort and January 2013 for the PrEP cohort. At each nPEP and PrEP consultation,
111 patients complete a questionnaire regarding their demographic and behavioural

PREP UPTAKE AMONG NPEP USERS IN MONTRÉAL

112 characteristics and a consent form. The clinical component of the survey is
113 administered by a nurse or physician. Participants consulting for nPEP were scheduled
114 for follow-up visits with a clinician at 4 and 12 weeks following their initial nPEP
115 prescription, which included HIV testing to monitor nPEP efficacy as well as sexual
116 health and HIV prevention counselling, including PrEP referrals when appropriate. All
117 participants consulting for PrEP were scheduled for a follow-up visit 30 days after the
118 baseline consultation and at 3-month intervals thereafter. De-identified questionnaires
119 were then entered into prospective nPEP and PrEP cohort databases. A detailed
120 description of the cohorts and clinical protocols can be found elsewhere [18 19].

121 **Study population**

122 The study population included self-identified gbMSM who consulted for nPEP and/or
123 PrEP at *Clinique médicale l'Actuel*. Participants who were HIV positive at their baseline
124 visit were excluded from the study population. The first analysis assessed longitudinal
125 trends in nPEP and PrEP consultations from October 2000 – August 2019.

126 We restricted the analysis to the time periods during which PrEP was recommended
127 (January 1st, 2013 and August 31st, 2019) for the primary analysis measuring the
128 determinants of PrEP uptake among nPEP users. Participants were categorized into 4
129 groups: 1) those who consulted for or received nPEP only (hereafter referred to as *PEP*
130 *only participants*), 2) those who consulted for or received PrEP only (hereafter referred
131 to as *PrEP only participants*), 3) participants who consulted for or received nPEP prior
132 to using PrEP at l'Actuel (hereafter referred to *PEP-to-PrEP participants*), and 4) PEP-
133 naïve participants who initiated PrEP and subsequently consulted for nPEP after PrEP

PREP UPTAKE AMONG NPEP USERS IN MONTRÉAL

134 discontinuation (hereafter referred to *PrEP-to-PEP participants*) (**Figure 1**). Our study
135 design enables us to link participants in the nPEP and PrEP cohorts but not those who
136 sought care at other clinics. As such, we could not properly estimate time to linkage,
137 and the small number of participants who sought nPEP at l'Actuel but PrEP elsewhere
138 (N=13) and PrEP at l'Actuel but nPEP from another clinic (N=120) were excluded from
139 the analyses. Participants whose last nPEP consultation took place before 2013 were
140 also excluded from the study regardless of whether they consulted for PrEP as PrEP
141 was unavailable at that time.

142 **Analyses**

143 Longitudinal trends in nPEP and PrEP consultations from 2000-2019 are presented and
144 the demographic and behavioral profiles of "*PEP only*", "*PrEP only*", and "*PEP-to-PrEP*"
145 participants over the 2013-2019 period are compared. The variables examined include:
146 age, education, total number of nPEP episodes, average time between nPEP episodes
147 (for participants who had multiple nPEP episodes and nPEP visits before the first PrEP
148 consultation), adherence to a nPEP treatment (missing <4 pills), early termination of
149 nPEP treatment and whether the participant was re-exposed to HIV during nPEP
150 treatment, chemsex (i.e., sexualized substance use), and a self-reported lifetime history
151 of sexually transmitted infections [17].

152 The time from the first nPEP visit after 2013 to the first PrEP consultation, stratified by
153 age group (<25, 25-49, ≥50 years, to ensure a large enough sample size in each group
154 while allowing salient age features to be considered), by the total number of nPEP
155 episodes and by the calendar year of the first nPEP visit was explored using Kaplan-

PREP UPTAKE AMONG NPEP USERS IN MONTRÉAL

156 Meier curves. Determinants of the time to PrEP uptake among nPEP users were
157 examined using a Cox proportional-hazards model. The model included covariates for
158 which there was previous evidence of potential association [20] or an indication for
159 PrEP [4], including: age and education (secondary and lower, college (including
160 Quebec's *Collège d'enseignement général et professionnel* (CEGEP) program,
161 university). Additionally, the total number of nPEP episodes, chemsex during the risk
162 episode, self-reported lifetime STI history (any/none) and whether the participants
163 returned for the first nPEP follow-up visit were included in the model and were treated
164 as time-dependent covariates. The year of the first nPEP consult after 2013, was used
165 to stratify the survival analyses. All cohort participants were censored if they
166 seroconverted during follow-up, in August 2019, or at their first PrEP consult, whichever
167 occurred first. Schoenfeld residuals were used to verify that the proportional hazard
168 assumption was met for each predictor-outcome pair [21], while the Efron method was
169 adopted to handle potential ties [22]. Missing values of education (N=325) and STI
170 history (N=91) were handled using multiple imputations and estimates from 5
171 imputations were pooled using Rubin's rules [23].

172 Lastly, a Kaplan-Meier analysis was used to characterise the differences in PrEP
173 persistence between *PEP-to-PrEP* and *PrEP only* participants who initiated PrEP. PrEP
174 termination was defined as a discontinuation of PrEP as indicated by the participant, or
175 as no active PrEP prescription within the past 6 months after the participant's last PrEP
176 follow-up visit. Participants who consulted for PrEP but who did not attend the first PrEP
177 follow up visit were excluded from the analysis.

178 All analyses were performed with R version 3.6.1.

PREP UPTAKE AMONG NPEP USERS IN MONTRÉAL

179 Ethics approval was obtained through Veritas Institutional Review Board and McGill
180 University.

181 **Results**

182 ***Description of the study participants***

183 *Entire l'Actuel cohort*

184 Between October 2000 (for the nPEP cohort) or January 2013 (for the PrEP cohort) and
185 August 2019, 5,512 attendees consulted for nPEP and 3,066 individuals consulted for
186 PrEP at l'Actuel. A total of 6,039 nPEP consultations and 3,253 PrEP consultations took
187 place at l'Actuel among 4,139 and 2,814 gbMSM, respectively. A steady increase in
188 consultations was observed prior to 2016, followed by decreases in both the numbers of
189 nPEP and PrEP consultations from 2017 onwards (**Figure 2**). The simultaneous
190 reduction in nPEP and PrEP can be explained by the emergence of new clinics
191 specializing in HIV that provide similar services.

192 From January 2013 onwards, of the 2,682 participants who received nPEP and who met
193 the inclusion criteria (i.e., gbMSM, cis-male, consented participation), 36% (972/2,679)
194 also consulted for or received PrEP during that period and only 1% (13/972) reported
195 having had a PrEP consultation outside of l'Actuel. Nearly half of the 2,718 consenting
196 gbMSM PrEP participants also used nPEP during that period (46%, 1,242/2,715), 10%
197 of whom (120/1,242) received nPEP externally to l'Actuel. The majority of participants in
198 both the nPEP and PrEP cohorts consulted for nPEP prior to PrEP (90%, 861/959).

PREP UPTAKE AMONG NPEP USERS IN MONTRÉAL

199 Almost all *PEP-to-PrEP* participants were prescribed PrEP (98%, 847/861) and 17%
200 (144/861) reinitiated nPEP afterwards (Figure 1).

201 *Participants included in the main analysis*

202 Overall, 1,707 *PEP only* participants, 861 *PEP-to-PrEP* participants and 1,473 *PrEP*
203 *only* participants were included in the main analyses. More *PEP-to-PrEP* participants
204 had a history of multiple nPEP episodes than *PEP only* participants. Furthermore, *PEP-*
205 *to-PrEP* participants reported a 6-month shorter average time between nPEP episodes
206 than *PEP only* participants. Approximately 44% (382/861) and 24% (414/1,707) of *PEP-*
207 *to-PrEP* participants and *PEP only* participants had at least 2 nPEP episodes.

208 Additionally, the proportion of participants returning for the first nPEP follow-up visit and
209 who were adherent to nPEP treatment was 19% and 12% higher among *PEP-to-PrEP*
210 participants than *PEP only* participants. Compared to the other 2 groups, *PrEP only*
211 participants had a lower education level and the proportion self-reporting a lifetime
212 history of STIs was 10% higher (**Table 1**).

213 ***Time from nPEP consultation to PrEP uptake and its determinants***

214 During the study period, approximately 40% of the nPEP participants linked to PrEP.
215 One quarter of the participants linked to PrEP within the first 20 months after first nPEP
216 consultation. Participants younger than 25 years old had lower rates of PrEP linkage
217 years and participants who had at least 2 nPEP episodes had overall higher rates of
218 PrEP linkage. Participants with more nPEP episodes linked to PrEP at a higher rate.
219 The rate of PrEP linkage increased over time between 2013 and 2019 (**Figure 3 A, B,**
220 **C**).

PREP UPTAKE AMONG NPEP USERS IN MONTRÉAL

221 Participants aged 25-49 years of age, who had multiple nPEP episodes, chemsex
222 during the risk period, self-reported antecedent STIs, and returned for the first nPEP
223 follow-up visit were the main determinants of time to PrEP linkage in the multivariate
224 model (**Table 2**). The association between education and PrEP linkage was
225 inconclusive although participants with a university degree had a slightly higher hazard
226 ratio than those who finished college. Estimates of the total number of nPEP episodes
227 suggested that each additional nPEP consultation would increase the rate of PrEP
228 linkage among nPEP users by 39% (HR=1.39, CI: [1.31-1.46]). Chemsex during the risk
229 period and having antecedent STIs increased the rate of PrEP linkage by 30%
230 (HR=1.30, 95% CI: [1.08, 1.56]) and 46% (HR=1.46, 95% CI: [1.26, 1.69]), respectively.
231 Returning for the first nPEP follow-up visit at week 4 was strongly associated with
232 linkage to PrEP, increasing the rate of linkage to 3.36 (95% CI: [2.71, 4.16]) times the
233 rate for those who did not return for the follow-up visit.

234 ***PrEP persistence among PEP-to-PrEP and PrEP only participants***

235 Daily PrEP was prescribed to 78% (674/861) of the *PEP-to-PrEP* participants and 82%
236 (1,208/1,473) of the *PrEP only* participants while the remainder of the participants were
237 prescribed intermittent PrEP. Following their PrEP consult, 78% of the *PEP-to-PrEP*
238 participants and 76% of the *PrEP only* participants initiated PrEP. The probability of
239 PrEP persistence was similar between *PEP-to-PrEP* and *PrEP only* participants (Figure
240 3D). The median time to PrEP discontinuation was 0.59 (95% CI: [0.06, 3.44]) and 0.54
241 years (95%CI: [0.06, 2.96]) among *PEP-to-PrEP* and *PrEP only* participants,
242 respectively. Half of the participants discontinued PrEP within the first year of initiation.

PREP UPTAKE AMONG NPEP USERS IN MONTRÉAL

243 **Discussion**

244 PrEP is a highly effective biomedical HIV prevention method recommended for high-risk
245 populations, such as gbMSM, and is an important component of combination prevention
246 strategies to achieve HIV elimination [4 6 12]. In our analysis of six years of longitudinal
247 data from the l'Actuel nPEP and PrEP cohorts, approximately 40% of nPEP users were
248 linked to PrEP, of which one quarter of the linkages occurred within the first 20 months
249 after nPEP consultation. nPEP participants aged 25-49 years, who reported multiple
250 nPEP episodes, chemsex, antecedent STIs, and who returned for the first nPEP follow-
251 up visit were more likely to link to PrEP. Reporting a history of nPEP use did not impact
252 PrEP persistence.

253 Our evaluation suggests that the time from nPEP consult to PrEP linkage rapidly
254 improved over the 2013-2019 period. This was particularly evident after 2015 when
255 more than 20% of individuals consulted for PrEP within the first year of their nPEP
256 consult. A study conducted in Toronto by Siemieniuk *et al.* (2005) indicated that 10% of
257 the individuals who consulted for nPEP at the *HIV Prevention Clinic* between 2013 and
258 2014 initiated PrEP as of 2015 [24]. This proportion is much lower than what was found
259 here- but could be explained by the lack of a publicly funded PrEP program in Ontario at
260 the time.

261 Despite improvements in PEP-to-PrEP linkage at l'Actuel, such progress could be
262 compromised by the overall low persistence on PrEP. Indeed, half of the PrEP users
263 discontinued it during the first year. There are multiple reasons for the observed PrEP
264 discontinuation including: changes in sexual behaviors, such as increased condom use,

PREP UPTAKE AMONG NPEP USERS IN MONTRÉAL

265 and the formation of a single long-term partnership [25 26]. However, the
266 discontinuations could be concerning if they are not related to change in sexual
267 behaviors. There is some evidence to suggest that this is not always the case. For
268 example, 98 (7%) PrEP users, and 144 (17%) *PEP-to-PrEP* users sought nPEP after
269 PrEP discontinuation. If this group is composed of individuals with a low-frequency of
270 high-risk exposures, other interventions such as PIP (post-exposure prophylaxis in
271 pocket) should be considered [27]. This could be important for PEP-experienced users.
272 A recent study in Toronto recorded a high prevalence of syndemic health problems
273 among MSM seeking nPEP [28]. This clustering of syndemic conditions could partly
274 explain low persistence on PrEP of nPEP users, which was also observed in other
275 cohorts [29].

276 Our results should be interpreted considering several limitations. First, we cannot rule
277 out that participants who used nPEP at l'Actuel eventually consulted for PrEP at other
278 clinics. As such, we may have overestimated time to linkage. Despite this limitation, only
279 1% of participants in the nPEP cohort reported having taken PrEP outside of l'Actuel.
280 Further, only 10% of the PrEP cohort had consulted for nPEP at another clinic. This
281 could imply that our inability to link our nPEP and PrEP cohorts to other clinics may
282 have only small impacts our inferences. However, given the changing HIV prevention
283 landscape in Montreal after 2017, future work should include multi-sites collaboration.
284 Second, it is difficult to know the exact date of PrEP termination for participants who did
285 not return for a follow-up visit which may result in incorrectly estimating the participants'
286 adherence to a PrEP regimen. The date of last PrEP consultation was used as the end
287 date of PrEP for those who discontinued PrEP, which might underestimate the time on

PREP UPTAKE AMONG NPEP USERS IN MONTRÉAL

288 PrEP. Additionally, participants on an intermittent PrEP regime may have sufficient pills
289 to last for more than 6 months, prolonging the time between follow-up visits, which
290 would be treated as “terminated PrEP” in this study and lower the estimated PrEP
291 persistence. However, as the PrEP persistence analysis performed in this study was
292 aimed to observe the difference between PrEP users with and without a nPEP history,
293 this could have minimal impact on our results. Third, and not unlike other studies, we
294 relied on self-reported information regarding potentially sensitive behaviors (e.g.,
295 antecedent STI, sexual behaviors, sexualized substance use) that could have been
296 misreported. Finally, the number of missing values for certain covariates was non-
297 negligible. However, multiple imputation was used which efficiently propagated
298 uncertainty to the relevant effect size measures.

299 As one of the largest nPEP and PrEP providers in Canada, the data collected at
300 *Clinique médicale l’Actuel* provides a comprehensive data set characterising the trends
301 in nPEP and PrEP use among gbMSM in Montréal. The large sample size of this study
302 enabled us to conduct subgroup analyses. Additionally, the study period covered the
303 time from the beginning of PrEP implementation in Québec until the present which
304 made it possible to capture a complete picture of PrEP use development and the impact
305 of PrEP on nPEP use. These strengths have resulted in a robust quantification of the
306 relationship between nPEP and PrEP use among gbMSM in this Canadian setting.

307 **Conclusions**

308 Making PrEP accessible, and promoting its use, to high risk populations is essential to
309 prevent HIV transmission. Understanding the current gaps and the determinants of

PREP UPTAKE AMONG NPEP USERS IN MONTRÉAL

310 PEP-to-PrEP linkages could help optimize PrEP delivery. Our results suggest that
311 creating a strong linkage corridor between nPEP and PrEP services could help facilitate
312 PrEP uptake among gbMSM vulnerable to HIV acquisition. Furthermore, given that 17%
313 *PEP-to-PrEP* users sought nPEP after PrEP discontinuation, future interventions should
314 focus on increasing PrEP continuation among people at on-going HIV risk. These
315 results should be used to better inform individualized HIV prevention strategies if
316 Montréal's Fast-Track city goal of HIV elimination is to be achieved, contributing to the
317 global effort to eliminate HIV/AIDS by 2030 [30].

318

PREP UPTAKE AMONG NPEP USERS IN MONTRÉAL

319 **References**

- 320 1. PHAC. Summary: Estimates of HIV Incidence, Prevalence and Canada's Progress on Meeting
321 the 90-90-90 HIV Targets, 2016, 2018.
- 322 2. UNAIDS. Global HIV & AIDS statistics - 2018 fact sheet, 2018.
- 323 3. Montréal S. Fast-Track City - A Common Action Plan to Accelerate the Fight Against the
324 HIV/AIDS Epidemic. Secondary Fast-Track City - A Common Action Plan to Accelerate the
325 Fight Against the HIV/AIDS Epidemic 2017.
326 [https://santemontreal.qc.ca/en/public/news/news/fast-track-city-a-common-action-](https://santemontreal.qc.ca/en/public/news/news/fast-track-city-a-common-action-plan-to-accelerate-the-fight-against-the-hiv-aids-epidemic/)
327 [plan-to-accelerate-the-fight-against-the-hiv-aids-epidemic/](https://santemontreal.qc.ca/en/public/news/news/fast-track-city-a-common-action-plan-to-accelerate-the-fight-against-the-hiv-aids-epidemic/).
- 328 4. Tan DHS, Hull MW, Yoong D, et al. Canadian guideline on HIV pre-exposure prophylaxis and
329 nonoccupational postexposure prophylaxis. CMAJ 2017;**189**(47):E1448-E58 doi:
330 10.1503/cmaj.170494[published Online First: Epub Date] | .
- 331 5. WHO. Post-exposure Prophylaxis to Prevent HIV Infection. 2007
- 332 6. WHO. Guidance on Pre-exposure Oral Prophylaxis (PrEP) for Serodiscordant Couples, Men
333 and Transgender Women Who Have Sex With Men at High Risk of HIV, 2012.
- 334 7. Molina JM, Capitant C, Spire B, et al. On-Demand Preexposure Prophylaxis in Men at High
335 Risk for HIV-1 Infection. New Engl J Med 2015;**373**(23):2237-46 doi:
336 10.1056/NEJMoa1506273[published Online First: Epub Date] | .
- 337 8. Molina JM, Charreau I, Spire B, et al. Efficacy, safety, and effect on sexual behaviour of on-
338 demand pre-exposure prophylaxis for HIV in men who have sex with men: an
339 observational cohort study. Lancet Hiv 2017;**4**(9):E402-E10 doi: 10.1016/S2352-
340 3018(17)30089-9[published Online First: Epub Date] | .

PREP UPTAKE AMONG NPEP USERS IN MONTRÉAL

- 341 9. Huang XJ, Hou JH, Song AX, et al. Efficacy and Safety of Oral TDF-Based Pre-exposure
342 Prophylaxis for Men Who Have Sex With Men: A Systematic Review and Meta-Analysis.
343 Front Pharmacol 2018;**9** doi: ARTN 79910.3389/fphar.2018.00799[published Online First:
344 Epub Date]].
- 345 10. Grant RM, Lama JR, Anderson PL, et al. Preexposure Chemoprophylaxis for HIV Prevention
346 in Men Who Have Sex with Men. New Engl J Med 2010;**363**(27):2587-99 doi:
347 10.1056/NEJMoa1011205[published Online First: Epub Date]].
- 348 11. Grohskopf LA, Chillag KL, Gvetadze R, et al. Randomized Trial of Clinical Safety of Daily Oral
349 Tenofovir Disoproxil Fumarate Among HIV-Uninfected Men Who Have Sex With Men in
350 the United States. J Aids-J Acq Imm Def 2013;**64**(1):79-86 doi: DOI
351 10.1097/QAI.0b013e31828ece33[published Online First: Epub Date]].
- 352 12. CDC. PrEP Brochure. Secondary PrEP Brochure. <https://www.cdc.gov/hiv/basics/prep.html>.
- 353 13. CDC US. PEP 101 Consumer Info Sheet, 2019.
- 354 14. CDC USPHS. Preexposure prophylaxis for the prevention of HIV infection in the United
355 States - 2017 Update, 2017.
- 356 15. Roland ME, Neilands TB, Krone MR, et al. A Randomized Noninferiority Trial of Standard
357 Versus Enhanced Risk Reduction and Adherence Counseling for Individuals Receiving
358 Post-Exposure Prophylaxis Following Sexual Exposures to HIV. Clin Infect Dis
359 2011;**53**(1):76-83 doi: 10.1093/cid/cir333[published Online First: Epub Date]].
- 360 16. Whitlock G, McCormack C, Fearnley J, McOwan A. High HIV incidence in men who have sex
361 with men attending for postexposure prophylaxis: a service evaluation. Sex Transm

PREP UPTAKE AMONG NPEP USERS IN MONTRÉAL

- 362 Infect 2017;**93**(3) doi: 10.1136/sextrans-2016-052623[published Online First: Epub
363 Date] |.
- 364 17. Pathela P, Jamison K, Braunstein S, et al. HIV incidence, and pre- and post-exposure
365 prophylaxis (PrEP and PEP) among PEP users at New York city sexual health clinics. Sex
366 Transmitted Infections 2019;**95**:A203
- 367 18. Thomas R, Galanakis C, Vezina S, et al. Adherence to Post-Exposure Prophylaxis (PEP) and
368 Incidence of HIV Seroconversion in a Major North American Cohort. Plos One
369 2015;**10**(11) doi: ARTN e014253410.1371/journal.pone.0142534[published Online First:
370 Epub Date] |.
- 371 19. Greenwald ZR, Maheu-Giroux M, Szabo J, et al. Cohort profile: l'Actuel Pre-Exposure
372 Prophylaxis (PrEP) Cohort study in Montreal, Canada. BMJ Open 2019;**9**(6):e028768 doi:
373 10.1136/bmjopen-2018-028768[published Online First: Epub Date] |.
- 374 20. Greenwald ZR, Beauchemin M, Corsenac P, et al. PrEP initiation following PEP: Creating a
375 Corridor of Care at l'Actuel. CAHR, 2018:51.
- 376 21. Moore DF. <https://doi.org/10.1007/978-3-319-31245-3>: Springer, Cham.
- 377 22. Dohoo I, Martin W, Stryhn H. Veterinary epidemiologic research. Charlottetown, P.E.I.:
378 University of Prince Edward Island, 2003.
- 379 23. Buuren SV, Groothuis-Oudshoorn K. mice: Multivariate Imputation by Chained Equations in
380 R. Journal of Statistical Software Dec 2011;**45**(3)
- 381 24. Smith DK, Grohskopf LA, Black RJ, et al. Antiretroviral postexposure prophylaxis after sexual,
382 injection-drug use, or other nonoccupational exposure to HIV in the United States:

PREP UPTAKE AMONG NPEP USERS IN MONTRÉAL

- 383 recommendations from the U.S. Department of Health and Human Services. MMWR
384 Recomm Rep 2005;**54**(RR-2):1-20
- 385 25. Naismith K JT. Washington PrEP DAP Client Survey Key Findings, 2017: Washington State
386 Department of Health Office of Infectious Disease, August 1, 2018.
- 387 26. Hojilla JC, Vlahov D, Crouch PC, Dawson-Rose C, Freeborn K, Carrico A. HIV Pre-exposure
388 Prophylaxis (PrEP) Uptake and Retention Among Men Who Have Sex with Men in a
389 Community-Based Sexual Health Clinic. Aids Behav 2018;**22**(4):1096-99 doi:
390 10.1007/s10461-017-2009-x[published Online First: Epub Date] |.
- 391 27. Wood BR. Prevention of HIV for persons with low-frequency, high-risk exposures: PrEP
392 (preexposure prophylaxis), PEP (postexposure prophylaxis), or 'PIP' (postexposure
393 prophylaxis in-pocket). AIDS 2020;**34**(3):481-82 doi:
394 10.1097/QAD.0000000000002446[published Online First: Epub Date] |.
- 395 28. Morrison SA, Yoong D, Hart TA, et al. High prevalence of syndemic health problems in
396 patients seeking post-exposure prophylaxis for sexual exposures to HIV. Plos One
397 2018;**13**(5):e0197998 doi: 10.1371/journal.pone.0197998[published Online First: Epub
398 Date] |.
- 399 29. Zucker J, Carnevale C, Richards P, et al. Predictors of Disengagement in Care for Individuals
400 Receiving Pre-exposure Prophylaxis (PrEP). J Acquir Immune Defic Syndr
401 2019;**81**(4):e104-e08 doi: 10.1097/QAI.0000000000002054[published Online First: Epub
402 Date] |.
- 403 30. UNAIDS. Fast-track: ending the AIDS epidemic by 2030. Geneva, Switzerland: UNAIDS, 2014.
404

PREP UPTAKE AMONG NPEP USERS IN MONTRÉAL

405 **Figure captions**

406 **Figure 1** Inclusion and classification of study participants among attendees at the
407 *Clinique médicale l'Actuel*, Montréal, Canada (October 2000 (PEP) / January 2013
408 (PrEP) to August 2019). Gay, bisexual, and other men who have sex with men (gbMSM)
409 participants who only consulted for or received non-occupational post-exposure
410 prophylaxis (PEP) or pre-exposure prophylaxis (PrEP) were defined as “*PEP only*” and
411 “*PrEP only*”, respectively. Participants who consulted for or received PrEP subsequently
412 to consulting for nPEP were classified as “*PEP-to-PrEP*”. Participants who consulted for
413 or received nPEP after PrEP were defined as “*PrEP-to-PEP*”. Objective 1 includes all
414 participants, Objective 2 (red box) includes *PEP only* and *PEP-to-PrEP* participants, and
415 Objective 3 (green box) includes *PrEP only* and *PEP-to-PrEP* participants.

416 **Figure 2** Number of post-exposure prophylaxis (PEP) and pre-exposure prophylaxis
417 (PrEP) consultations conducted among gay, bisexual and other men who have sex with
418 men (gbMSM) between January 2001 and August 2019 at *Clinique médicale l'Actuel*,
419 Québec (QC), Canada. Each bar represents total number of nPEP consultations during
420 a calendar year with the exception of the last bar which represents an eight-month
421 period. The dashed line represents the total number of PrEP consultations over each
422 time interval between July 2013 and August 2019. nPEP consultations before 2013 are
423 greyed-out to indicate that they occurred before PrEP guidelines came into effect (these
424 were also excluded from subsequent analyses).

425 **Figure 3** Survival curves of: (1) The cumulative proportion and 95% confidence
426 intervals for consulting for pre-exposure prophylaxis (PrEP) after a post-exposure

PREP UPTAKE AMONG NPEP USERS IN MONTRÉAL

427 prophylaxis (PEP) consultation stratified by age group (<25, 25-49, and \geq 50 years)
428 (Panel A), stratified by number of nPEP episodes (1 episode, 2 episodes, and \geq 3
429 episodes) (Panel B), and stratified by calendar year of first nPEP consultation (Panel C),
430 and (2) the proportion of participants who were persistent with pre-exposure prophylaxis
431 (PrEP) stratified by post-exposure prophylaxis (PEP) history (Panel D) at Clinique
432 médicale l'Actuel among gay, bisexual and other men who have sex with men (gbMSM).
433 The x-axis represents the time since first nPEP consultation (Panels A, B, C) or time
434 since first PrEP consultation (Panel D) after 2013 at *Clinique médicale l'Actuel*. PEP-to-
435 PrEP: participants who previously consulted for nPEP and initiated PrEP at *Clinique*
436 *médicale l'Actuel*. PrEP only: participants who self-reported never having consulted for
437 nPEP (anywhere) but initiated PrEP at *Clinique médicale l'Actuel*.

438

Table 1 Demographic and sexual behaviour characteristics of gay, bisexual, and other men who have sex with men (gbMSM) attending *Clinique médicale l'Actuel* at first nPEP consultation or PrEP consultation after 2013 for nPEP *only*, PEP-to-PrEP, and PrEP *only* participants.

N (%)	PEP only (N=1,707)	PEP-to-PrEP (N=861)	PrEP only (N=1,473)
Age (mean, SD)	34 (11)	35 (10)	37 (11)
Education			
Secondary and lower	223 (13%)	91 (11%)	204 (14%)
College	358 (21%)	151 (18%)	260 (18 %)
University	924 (54%)	504 (59%)	694 (47%)
Missing	202 (12%)	115 (13%)	315 (21%)
Total number of nPEP episodes (Oct. 2000 to Aug. 2019)¹			
1 episode	1293 (75%)	479 (56%)	
2 episodes	258 (15%)	192 (22%)	
≥ 3 episodes	156 (9%)	190 (22%)	
Average time between nPEP episodes (months) (mean, SD)¹ (Oct. 2000 to Aug. 2019)			
	30 (28)	24 (21)	
Chemsex during the risk period related to the consultation			
	233 (14%)	139 (16%)	
Participated in chemsex in past 12 months			
			999 (76%)
Lifetime history of STIs (self-reported)			
	885 (52%)	488 (57%)	974 (66%)
Missing	51 (3%)	51 (6%)	123 (8%)
Returned for the first follow-up²			
	950 (68%)	644 (87%)	1113 (76%)
Adherence to nPEP treatment (missing <4 pills)²			
	880 (63%)	557 (75%)	/
Missing	483 (34%)	168 (22%)	/
Early termination of nPEP treatment²			
	33 (2%)	11 (1%)	/
Missing	461 (33%)	144 (19%)	/
Re-exposure to HIV during nPEP treatment²			
	12 (< 1%)	11 (1%)	/

¹ These two variables represent the nPEP *only* participants' entire nPEP history and the PEP-to-PrEP participants' nPEP history before their first PrEP consultation at l'Actuel.

² 303 nPEP *only* participants and 114 PEP-to-PrEP participants did not initiate nPEP and were thus excluded from the analysis.

³ First follow-up: 4 weeks after the first nPEP consultation or 30 days after first PrEP consultation.

⁴ Abbreviations: (1) PEP: post-exposure prophylaxis; (2) PrEP: pre-exposure prophylaxis; (3) STI: sexually transmitted infection.

Table 2. Univariable and multivariable hazard ratios and 95% confidence interval (95%CI) from Cox proportional hazard models of the determinants of time to PrEP consultation among gay, bisexual, and other men who have sex with men (gbMSM) who used nPEP after January 2013 at the *Clinique médicale l'Actuel*.

Determinants	Univariate analysis (N=2,571)		Multivariate analysis (N=2,571)	
	Hazard ratio	95%CI	Hazard ratio	95%CI
Age (years)				
< 25	REF		REF	
25 - 49	1.61	[1.31, 1.98]	1.33	[1.08, 1.65]
≥ 50	1.47	[1.11, 1.95]	1.08	[0.81, 1.44]
Education¹				
Secondary	REF		REF	
College	1.01	[0.77, 1.31]	0.96	[0.73, 1.27]
University	1.24	[0.98, 1.56]	1.04	[0.82, 1.32]
Total number of nPEP episodes	1.34	[1.25, 1.44]	1.39	[1.31, 1.46]
Chemsex during the risk period related to PEP consultations	1.23	[1.02, 1.49]	1.30	[1.08, 1.56]
Self-reported lifetime STI history¹	1.54	[1.34, 1.77]	1.46	[1.26, 1.69]
Return for the first nPEP follow-up visit¹	3.09	[2.49, 3.83]	3.36	[2.71, 4.16]

¹ Due to missing values, education, self-reported lifetime STI history and return for the first follow-up visit were imputed using 5 multiple imputations. Pooled estimates based on Rubin's rules are shown in the table.

² Abbreviations: (1) PEP: post-exposure prophylaxis; (2) STI: sexually transmitted infection.

Objective 1

Attendees who sought PEP (N = 5512)

- Cis-male (92%)
- Cis-female (8%)
- Trans-gender (1%)

Attendees who sought PrEP (N = 3066)

- Cis-male (98%)
- Cis-female (1%)
- Trans-gender (<1%)

No consent (N=350)

Not gbMSM (N=1062)

Last consultation before
January 1st, 2013 (N=1403)

First consultation after
August 31st, 2019 (N=3)

HIV positive at first
consultation after 2013
(N=12)

No consent (N=251)

Not gbMSM (N=69)

First consultation before
January 1st, 2013 (N=7)

First consultation after
August 31st, 2019 (N=24)

PEP at l'Actuel but PrEP
at another site (N=13)

PrEP at l'Actuel but PEP
at another site (N=120)

PEP and PrEP at l'Actuel
but last PEP before 2013
(N=163)

Both PEP and PrEP at l'Actuel
(N=959)

PrEP-to-PEP at l'Actuel
(N=98)

PEP only
(N=1707)

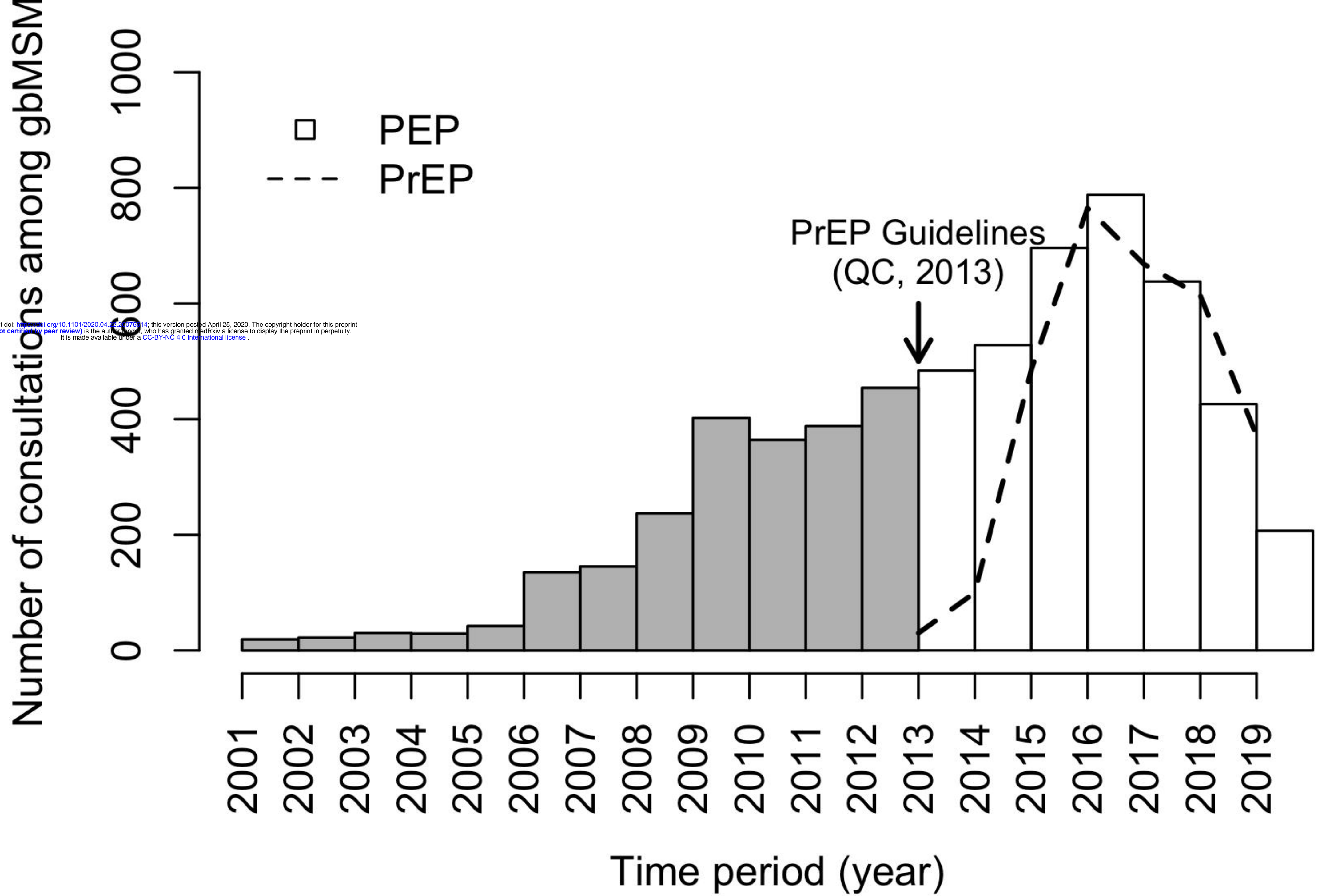
PEP-to-PrEP at l'Actuel (N=861)

- No PEP after PrEP (83%)
- PEP after PrEP (17%)

PrEP only
(N=1473)

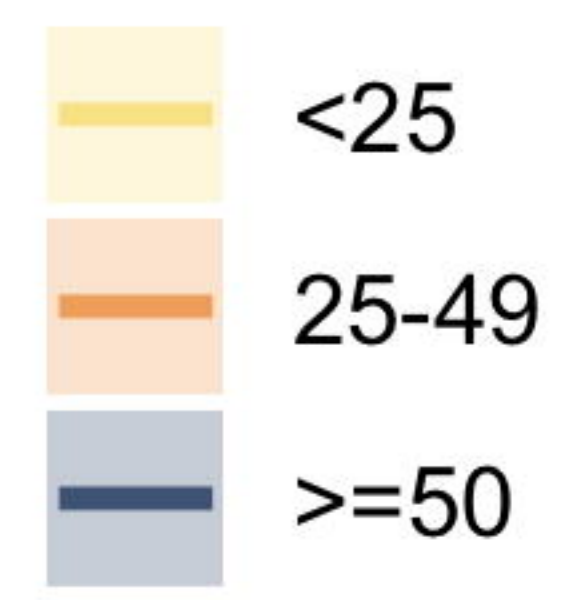
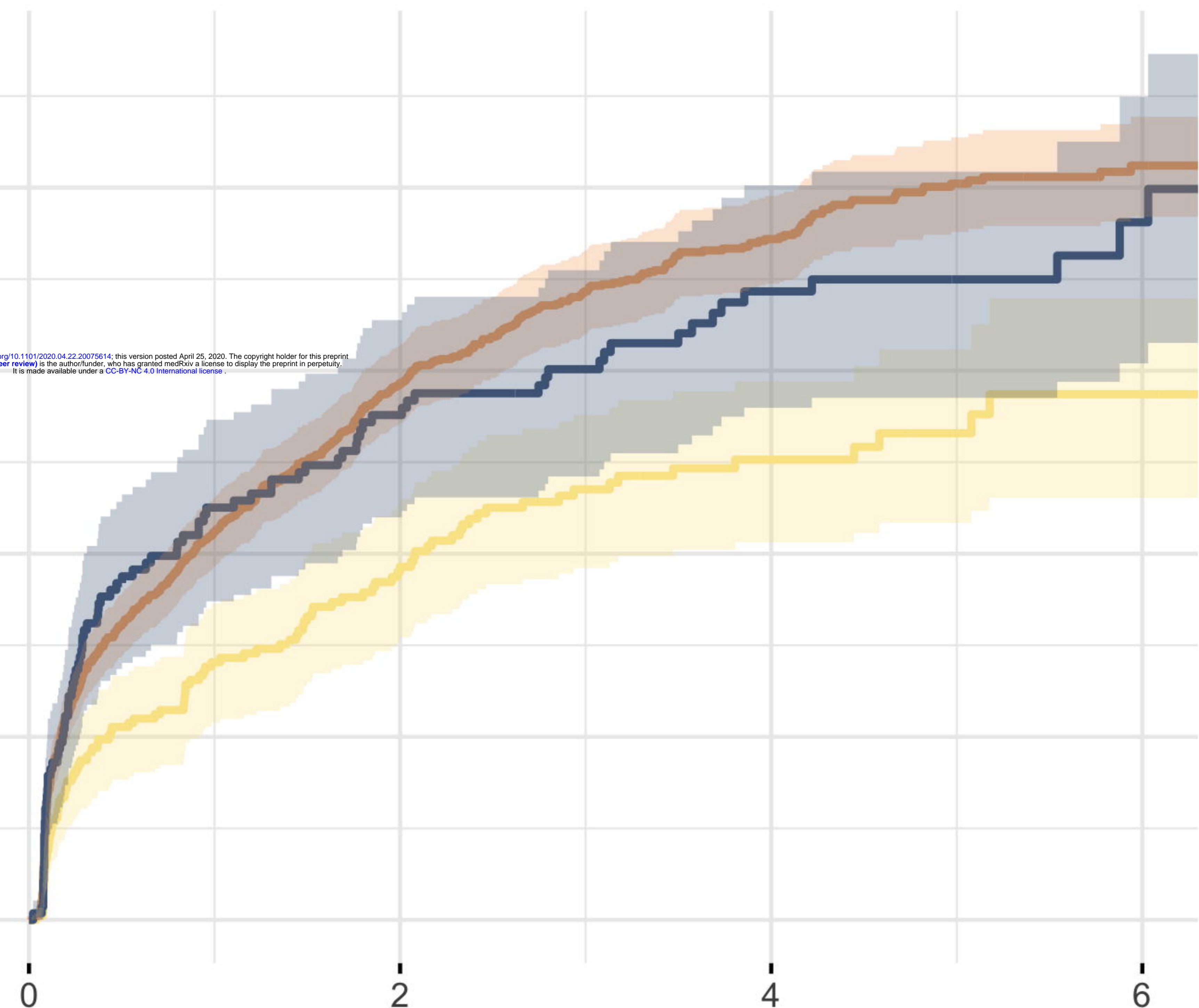
Objective 2

Objective 3



Cumulative proportion of PrEP linkage

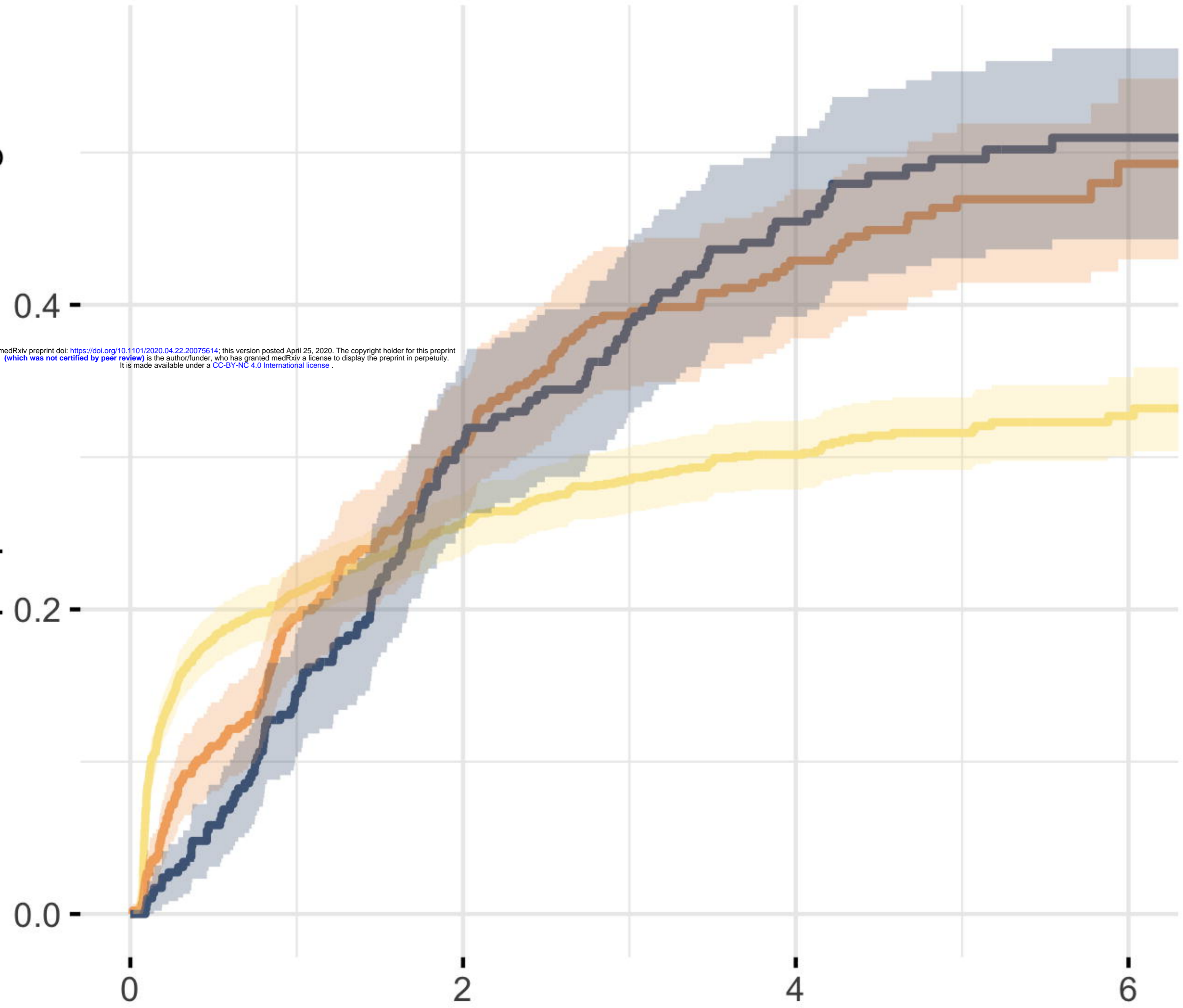
medRxiv preprint doi: <https://doi.org/10.1101/2020.04.22.20075614>; this version posted April 25, 2020. The copyright holder for this preprint (which was not certified by peer review) is the author/funder, who has granted medRxiv a license to display the preprint in perpetuity. It is made available under a CC-BY-NC 4.0 International license.



Time since first PEP consultation (years)

Cumulative proportion of PrEP linkage

medRxiv preprint doi: <https://doi.org/10.1101/2020.04.22.20075614>; this version posted April 25, 2020. The copyright holder for this preprint (which was not certified by peer review) is the author/funder, who has granted medRxiv a license to display the preprint in perpetuity. It is made available under a CC-BY-NC 4.0 International license.

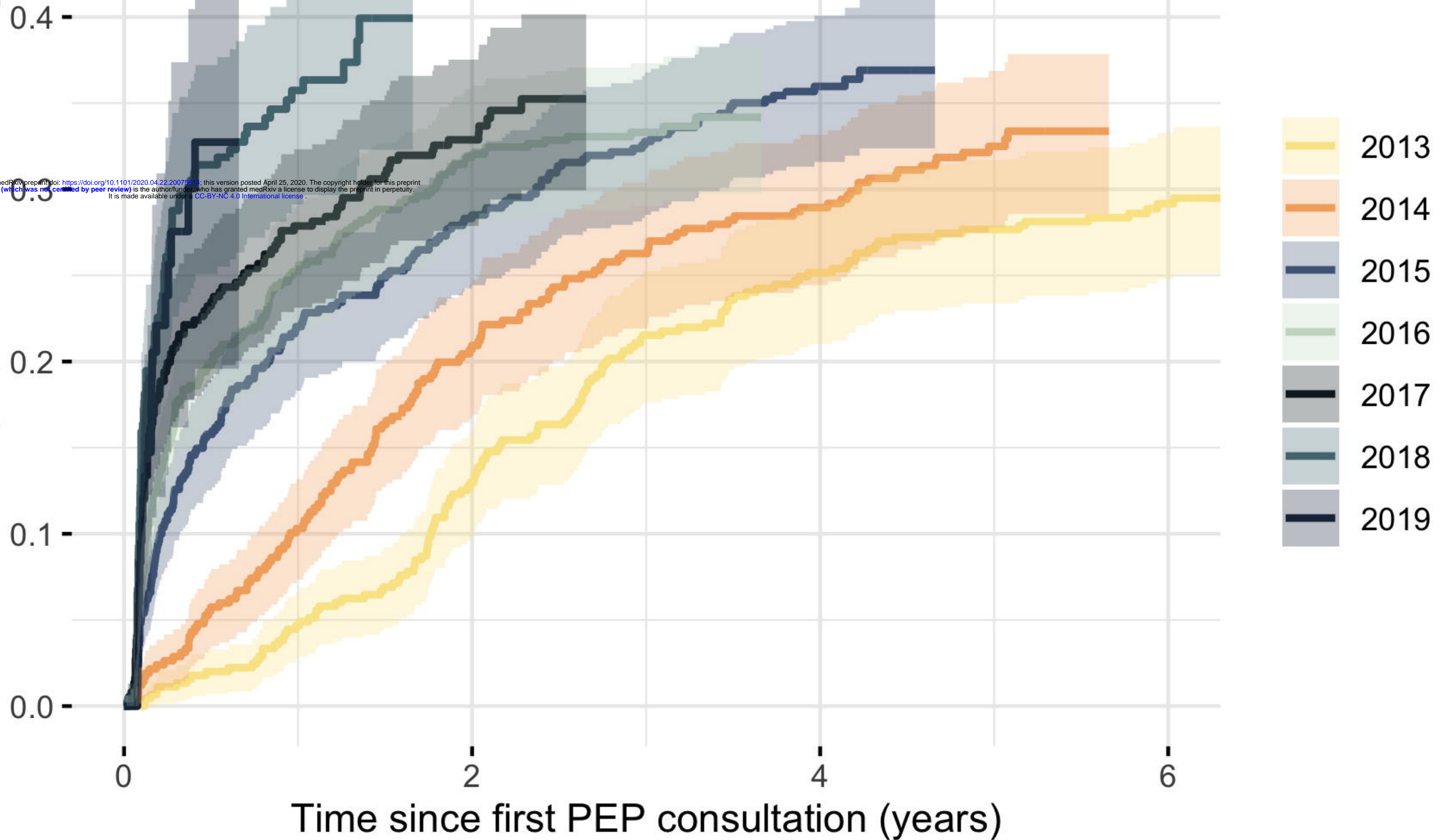


- 1 episode
- 2 episodes
- >= 3 episodes

Time since first PEP consultation (years)

Cumulative proportion of PrEP linkage

medRxiv preprint doi: <https://doi.org/10.1101/2020.04.22.20075314>; this version posted April 25, 2020. The copyright holder for this preprint (which was not certified by peer review) is the author/funder, who has granted medRxiv a license to display the preprint in perpetuity. It is made available under a [CC-BY-NC 4.0 International license](#).



Proportion persistent on PrEP

medRxiv preprint doi: <https://doi.org/10.1101/2020.04.22.20075614>; this version posted April 25, 2020. The copyright holder for this preprint (which was not certified by peer review) is the author/funder, who has granted medRxiv a license to display the preprint in perpetuity. It is made available under a [CC-BY-NC 4.0 International license](#).

