

Audiometric profiles and patterns of benefit. A data-driven analysis of subjective hearing difficulties and handicaps.

Raul Sanchez-Lopez^{a,*}, Torsten Dau^a, and William M. Whitmer^{b,c}

^a *Hearing Systems Section, Department of Health Technology, Technical University of Denmark, Kgs. Lyngby, Denmark.*

^b *Hearing Sciences—Scottish Section, Division of Clinical Neuroscience, School of Medicine, University of Nottingham, Glasgow, UK.*

^c *Institute of Health and Wellbeing, College of Medical, Veterinary, and Life Sciences, University of Glasgow, UK*

* Corresponding author: Raul Sanchez-Lopez,

Hearing Systems Section, Department of Health Technology, Ørstedes Plads 352, R-111,
Technical University of Denmark (DTU), 2800 Kgs. Lyngby, Denmark.

Email: rsalo@dtu.dk

Audiometric profiles and patterns of benefit. Data-driven analysis of subjective hearing difficulties and handicaps.

Objective: Hearing rehabilitation attempts to compensate for auditory dysfunction, reduce hearing difficulties and minimize participation restrictions that can lead to social isolation. However, there is no systematic approach to assess the quality of the intervention at an individual level that might help to evaluate the need of further hearing rehabilitation in the hearing care clinic.

Design: A data-driven analysis on subjective data reflecting hearing disabilities and handicap was chosen to explore “benefit patterns” as a result of rehabilitation in different audiometric groups. The method was based on: 1) Dimensionality reduction; 2) Stratification; 3) Archetypal analysis; 4) Clustering; and 5) Item importance estimation.

Study sample: 572 hearing-aid users completed questionnaires of hearing difficulties (speech, spatial and qualities hearing scale; SSQ) and hearing handicap (HHQ).

Results: The data-driven approach revealed four benefit profiles that were different for each audiometric group. The groups with low degree of high-frequency hearing loss (HL_{HF}) showed a priority for rehabilitating hearing handicaps, whereas the groups with $HL_{HF} > 50$ dB HL showed a priority for improvements in speech understanding.

Conclusions: The patterns of benefit and the stratification approach might guide the clinical intervention strategy and improve the efficacy and quality of service in the hearing care clinic.

Abstract 220 words

Keywords: Hearing loss, participation restrictions, activity limitations, data-driven analysis, auditory profile

1 **Introduction**

2 The consequences of hearing loss entail activity limitations and participation restrictions
3 (Simeonsson, 2000). The hearing rehabilitation process aims to minimize both aspects
4 and involves two main steps: diagnosis and remediation (Boothroyd, 2007; Goldstein &
5 Stephens, 1981). After the diagnosis of a hearing loss, an intervention strategy that
6 involves a hearing solution, such as a hearing aid (HA), is commonly proposed and
7 selected by the clinician. The compensation strategy chosen in the HA fitting process is,
8 to a large degree, based on the shape of the pure-tone audiogram. The intervention is
9 verified and validated to ensure the quality of the device and the service (Jorgensen,
10 2016). However, hearing rehabilitation often requires further interaction, such as follow-
11 up visits to adjust the device(s) to the particular needs of the patient, as well as counseling,
12 focused on communication programs and professional advice (Laplante-Lévesque et al.,
13 2010). Overall, each of the steps of the intervention (diagnosis, adjustment and
14 verification) is influenced by technical, personal and social factors (Vestergaard Knudsen
15 et al., 2010).

16 The evaluation of the efficacy of the hearing rehabilitation process is typically assessed
17 by questionnaires as outcome measures. The questionnaires can be designed to evaluate
18 the individual benefit, the clinical practice or the inclusion of a new device or strategy
19 (Cox et al., 2000; Cox, 2003). Some outcome measures include specific items related to
20 benefit or satisfaction (SADL: Cox & Alexander, 1999; APHAB: Cox & Alexander,
21 1995; IOI-HA: Cox, 2003; GHABP: Gatehouse, 1999), whereas others are focused on
22 hearing disabilities and handicaps (de Ronde-Brons et al., 2019; SSQ: Gatehouse &
23 Noble, 2004; Hallberg, 1998; Newman et al., 1990). All of these outcome measures aim
24 to capture overall experiences with the hearing rehabilitation (e.g., IOI-HA) and/or
25 specific aspects, such as the speech, spatial and qualities hearing scale (SSQ; Gatehouse

26 & Noble, 2004). The SSQ reflects HA listeners' current difficulties with respect to speech
27 perception, spatial sound perception and qualities of hearing, such as the ability to follow
28 a conversation, to localize a sound source or to identify a sound. Although the assessment
29 of hearing disabilities is crucial for a successful hearing rehabilitation, the overall benefit
30 does not only depend on auditory disabilities but also on handicaps experienced by the
31 listener (Whitmer et al., 2016), such as the effects on social participation derived from
32 the hearing loss.

33 One of the primary aims of outcome measures is to quantify the effectiveness of hearing
34 rehabilitation. However, there is no known systematic method to use an individual's
35 outcome-measure responses to guide any further personalized intervention. The ability of
36 the HCP to understand each patient's needs and to implement a suitable intervention is,
37 however, crucial for successful rehabilitation (Boothroyd, 2007). In the present study, a
38 data-driven approach, aiming at identifying patterns of benefit in the self-reported
39 outcome measures, was used for exploring the possibilities of personalized interventions.
40 These interventions may be based on the classification of the intervention in "benefit
41 profiles" (optimal, near-optimal, suboptimal) and the important factors that can be
42 addressed to improve the hearing benefit. Furthermore, the auditory deficits associated
43 with different audiometric shapes, were included in such approach by using audiometric-
44 based auditory profiling.

45 ***Stratification based on auditory deficits***

46 The characterization of the hearing deficits of a person in terms of pure-tone audiometry
47 does not typically capture the person's performance in real-life situations. Therefore,
48 information about supra-threshold auditory deficits, such as speech intelligibility in noise,
49 might help to better understand the scale and scope of an individual's sensory
50 impairments. Recently, Sanchez-Lopez et al. (2020) proposed a stratification of hearing-

51 impaired individuals into four clinically relevant subgroups, referred to as “auditory
52 profiles.” The auditory profiles were the result of a data-driven analysis that allowed the
53 identification of four archetypal patterns of perceptual deficits along two largely
54 independent dimensions, speech-intelligibility deficits and loudness perception deficits,
55 respectively. Since each auditory profile showed different degrees of deficits, listeners
56 associated with a given profile are likely to experience similar distinct hearing disabilities.
57 The audiometric thresholds associated with the different auditory profiles showed
58 significant differences. This suggests that different audiometric configurations can be
59 associated with specific supra-threshold deficits. While supra-threshold measures are
60 important, they are not systematically included in audiological assessments. Some
61 situations may limit the amount of time-intensive testing of supra-threshold deficits
62 possible in clinical settings whereas the pure-tone audiometry is currently a required
63 procedure. Therefore, an audiometry-based stratification into “audiometric profiles” or
64 audiometric groups might provide an initial classification and predict the perceptual
65 deficits of the listener. This approach can be useful when applying the stratification to
66 studies without supra-threshold measures retrospectively. However, this pre-
67 classification in audiometric groups does not guarantee that the listener is correctly
68 classified and supra-threshold tests can confirm the listener’s auditory profile (Sanchez-
69 Lopez et al., 2020).

70 *Aims of the study*

71 In the present study, subjective data from a questionnaire of hearing difficulties (SSQ)
72 and a questionnaire of hearing handicap (HHQ) were analyzed using a data-driven
73 approach and following the principles of the “knowledge discovery from databases”
74 (KDD; Frawley et al., 1992; Mellor et al., 2018). A data set of a clinical population of
75 hearing-aid users was analyzed in an attempt to uncover archetypal “benefit profiles”

76 reflected in the subjective data that can be associated to specific audiometric groups based
77 on the average audiometric thresholds of the four auditory profiles according to Sanchez-
78 Lopez et al. (2020). The goals of the study were; 1) to identify the patterns of benefit
79 associated with different audiometric groups, 2) to identify the priorities of hearing
80 rehabilitation in terms of particular hearing difficulties and handicaps that need to be
81 improved, and 3) to examine the possibilities of implementing a personalized post-fitting
82 rehabilitation strategy.

83

84 **Method**

85 The data analysis consisted of five steps, as shown in Figure 1. First, the data (described
86 in the next section) were transformed using factor analysis. Second, the participants were
87 stratified into four groups based on their degree of low- (HL_{LF}) and high-frequency
88 (HL_{HF}) hearing loss as an approximation of the audiometric profiles of Sanchez-Lopez et
89 al. (2020). Third, to identify archetypal patterns of benefit, the overall data as well as the
90 data belonging to each of the four subgroups were processed using an archetypal analysis.
91 Fourth, the participants were identified as belonging to a cluster of participants showing
92 a similar “benefit profile”, based on their similarity to the archetypal patterns of benefit.
93 Finally, the identified benefit profiles were predicted using supervised learning and the
94 importance of individual questionnaire items was analyzed.

95 ***Description of the dataset***

96 The data-driven analysis presented here is a retrospective study performed on a large
97 dataset from Hearing Science Scottish Section (HSSS; formerly Institute of Hearing
98 Research) of the University of Nottingham. The data were collected between the years
99 2002-2011, and most of the patients were referred from the NHS Audiology clinic of the

100 Glasgow Royal Infirmary. The total dataset consisted of 1471 participants. This HSSS
101 dataset has been previously analyzed by Akeroyd et al. (2014) and Whitmer et al. (2014),
102 where a thorough description of the normative data was provided. The variables of
103 interest for the present study were (1) audiometric thresholds, (2) raw responses to two
104 questionnaires: the Speech, Spatial and Qualities hearing scale (SSQ) and the Hearing
105 Handicap Questionnaire (HHQ; Gatehouse & Noble, 2004). The subset of the HSSS
106 dataset used here consisted of 880 observations (participants), and 62 variables.

107 *Audiometric thresholds.* All thresholds were obtained by trained researchers using the
108 modified Hughson-Westlake adaptive method. Since the data-analysis involved
109 stratification of the participants in audiometry-based auditory profiles, the audiometric
110 thresholds were also retrieved from the dataset but not used in the analysis. The
111 audiometric thresholds were grouped into low-frequency (≤ 1 kHz; LF) and high-
112 frequency (> 1 kHz; HF) averages and only the better ear was used for further analysis.
113 Sanchez-Lopez et al. (2020) did not include participants with average low-frequency
114 hearing thresholds above 65 dB hearing level (HL_{LF}) in their data-driven profiling
115 approach. Therefore, to increase the comparability across both stratification strategies,
116 data from participants with a severe-to-profound low-frequency hearing loss
117 ($HL_{LF} > 65$ dB) were excluded.

118 *Questionnaire responses.* The SSQ consists of 14 speech-understanding (SU) related
119 items, 17 spatial-hearing (SP) related items and 18 qualities-of-hearing (QH) related
120 items. The SSQ questionnaire is scored on a 0-10 scale (in steps of 0.5 in this particular
121 dataset), whereby a low score corresponds to high difficulty and a high score corresponds
122 to low difficulty. If the item corresponds to a situation that the participant has not
123 experienced, the response *not applicable* can be chosen. The 12 HHQ items were based
124 on the Hearing, Disabilities and Handicaps Scale (Hétu et al., 1994). The HHQ is scored

125 on a discrete 1-5 scale, with 5 representing the greatest handicap. Its questions can be
126 divided into two subscales: emotional distress (ED) and social restriction (SR) (Noble et
127 al., 2008). The HHQ data were multiplied by -1, such that a higher value corresponded to
128 a lower handicap, consistent with the scale considered in the SSQ data. Data from
129 participants with 30 or more missing responses across both questionnaires (i.e., missing
130 at least half of the data) were also excluded. All questionnaire data were standardized
131 prior to analysis.

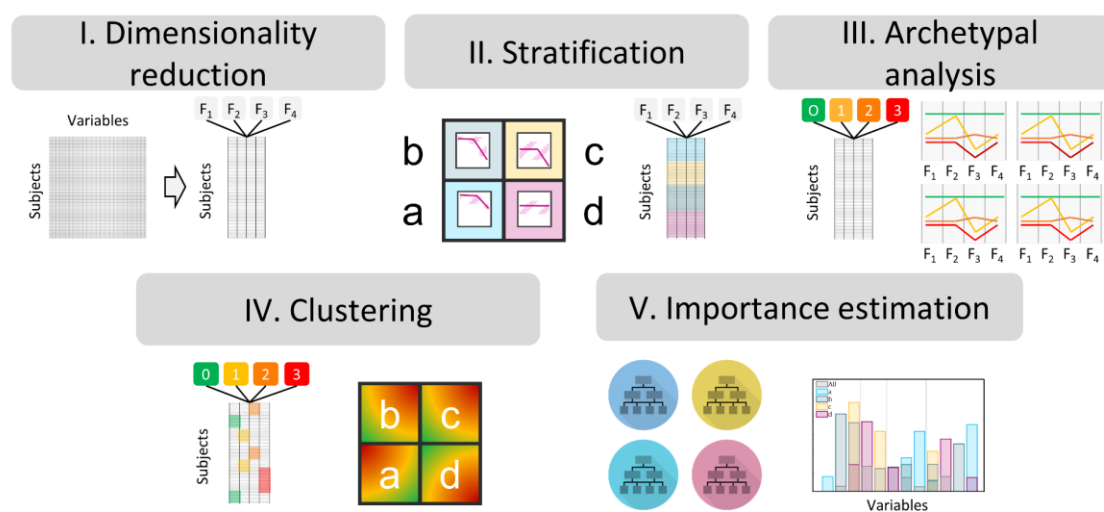
132 The final number of observations considered for the current analysis was 572 participants
133 (272 female) who wore at least one hearing aid. At the time of testing, 478 (84%) were
134 unilaterally fit (244 left ear, 234 right), the remaining 94 were bilaterally fit. All hearing
135 aids were behind-the-ear from a variety of manufacturers. Median hearing aid experience
136 was 3 years (range 2 wks – 63 years). Their median age was 65 (range 18-85); 71% were
137 ≥ 60 years of age. Their median better-ear four-frequency average was 46 dB HL (range
138 5-111). The distribution of observations across the four audiometric profiles *a*, *b*, *c* and *d*
139 of Sanchez-Lopez et al. (2020) was 63, 81, 345 and 83, respectively. Bilateral fittings
140 were proportionally greater in audiometric groups b and c (20 and 18%, respectively) than
141 groups a and d (9 and 12%, respectively). For the analysis of the archetypical patterns of
142 benefit, the heterogeneous nature of this subset of the HSSS dataset – the breadth of
143 hearing abilities as well as age and hearing aids represented – allows a robust stratification
144 of the overall data, as well as the data within each audiometric groups, into benefit profiles
145 (Eisenack et al., 2019).

146 ***Data-driven pattern identification***

147 The data-driven analysis used here was based on unsupervised and supervised learning
148 and was divided into five main steps illustrated in Figure 1. The first step reduced the
149 dimensionality of the data by applying factor analysis. The second step divided the

150 processed dataset in four subsets of the data corresponding to the listeners belonging to
151 four audiometric groups. The third step was the archetypal analysis which was used to
152 identify the archetypal patterns of benefit. The listeners were then clustered in benefit
153 profiles in the fourth step. Finally, the predictor importance of each of the items of the
154 questionnaires was inferred from the fifth step.

Data-driven analysis of subjective data



155

156 Figure 1. Sketch of the data-driven method for the analysis of the subjective data. Top
157 panel: The unsupervised learning exploratory stages included: I) Dimensionality
158 reduction into four factors (F₁, F₂, F₃, F₄); II) Stratification, where the subjects were
159 divided into audiometric groups (a, b, c, d); III) Archetypal analysis where the data were
160 decomposed into a matrix with the archetypal patterns of benefit [APoB0, APoB1,
161 APoB2 and APoB3] and the weights of each pattern resembling each subject's
162 observation. Bottom panel: IV) Clustering, where the participants were clustered based
163 on the similarity of their scores with the benefit profiles derived from stage II; and V)
164 Importance estimation, where a random forest was trained with to classify the participants
165 into the “benefit profiles” and the importance of the predictors were estimated.

166 I. **Dimensionality reduction:** Based on factor analysis (Cattell, 1988), the multi-
167 dimensional dataset was reduced to four latent factors. The number of factors was
168 selected by parallel analysis (Horn, 1965) with subsequent iterative resampling

169 (K = 200). The factors were obtained using oblique Procrustes rotation as in
170 (Akeroyd et al., 2014). The factor scores corresponding to each of the subjects,
171 and obtained by Bartlett's method, were used as the input of the archetypal
172 analysis stage (III below).

173 II. **Stratification:** The listeners were divided into four groups corresponding to the
174 audiometry-based auditory profiles a, b, c and d as suggested in Sanchez-Lopez
175 et al. (2020). The binary rules used here are

176 a. Audiometric group-a: $HL_{HF} < 50$ dB HL, and $HL_{LF} < 30$ dBHL.

177 b. Audiometric group-b: $HL_{HF} > 50$ dB HL, and $HL_{LF} < 30$ dBHL.

178 c. Audiometric group-c: $HL_{HF} > 50$ dB HL, and $HL_{LF} > 30$ dBHL.

179 d. Audiometric group-d: $HL_{HF} < 50$ dB HL, and $HL_{LF} > 30$ dBHL.

180 III. **Archetypal analysis:** Matrix factorization was applied to the results of the
181 dimensionality reduction step. A given observation was represented as a convex
182 combination of the archetypal patterns (Cutler & Breiman, 1994). The analysis
183 retrieves two matrices – the ‘pattern matrix’, which contained archetypal patterns
184 represented in the data and the ‘subject matrix’, consisted of the weights
185 corresponding to each pattern that resemble each of the observations. The specific
186 implementation of the method used here was similar to Mørup & Hansen (2012).
187 The identified patterns were ranked based on the degree of disability and handicap
188 in each archetypal pattern of benefit and labeled based on rehabilitation needs as
189 in clinical triage as APoB0, APoB1, APoB2, and APoB3, being APoB0 the
190 optimal benefit pattern and APoB3 the suboptimal.

191 IV. **Clustering:** The distance between observations and the four archetypal patterns
192 was estimated using the weights contained in the subject matrix. The criteria used
193 here was the nearest archetype (Ragozini et al., 2017). Each observation was then
194 assigned to a cluster based on their weights. While some observations had similar
195 weights, no observation was equidistant from any two clusters. The “benefit
196 profiles” were labeled according to the archetypal patterns of benefit (BP0, BP1,
197 BP2, and BP3).

198 V. **Importance estimation:** Once the subjective data corresponding to each of the
199 subjects were analyzed with unsupervised learning techniques, supervised
200 learning was used for estimation the importance of the specific items of the
201 dataset. A decision tree ensemble was trained with a subset of the data
202 corresponding to the items of the SSQ and the HHQ and the identified clusters as

203 the output. The ensemble was trained with 200 surrogated trees using curvilinear
204 prediction. The importance was obtained by the permutation of out-of-bag
205 features, which provides the minimum square error averaged for each tree over
206 the standard deviation across the trees.

207

208 **Results**

209 The present study sought to identify patterns of benefit associated with different
210 audiometric groups. The data from the questionnaires SSQ and HHQ, collected in a
211 heterogeneous group of hearing-aid users, was first explored using factor analysis. Then,
212 the patterns of benefit were inferred by using archetypal analysis over the factor scores
213 corresponding to four factors (speech understanding, spatial hearing, qualities of hearing
214 and hearing handicap). The dataset was stratified into four subsets corresponding to the
215 four audiometric groups. In addition, it was of interest to identify the priorities of hearing
216 rehabilitation. This was done by evaluating the predictor importance of the individual
217 items of the SSQ and HHQ. Once the participants were divided into clusters or *benefit*
218 *profiles*, the results corresponding in each subdomain were explored with the purpose of
219 applying the present findings in a personalized hearing rehabilitation strategy.

220 ***Factor analysis***

221 The parallel analysis revealed four factors as the optimal number of factors. The factor
222 analysis was repeated in each of the stratified groups to confirm their similarity before
223 further analysis. The loadings in each group were similar to the ones from the analysis of
224 the entire dataset with small deviations commiserate with the changes in benefit patterns
225 described below. Overall, the four factors corresponded to the three subdomains of the
226 SSQ – SU, SP and QH – and hearing handicap (HH). These factors, taken together,
227 explained a total of 50% of the variance.

228

229

230

231 The highest loading items in each of the three SSQ-based factors were similar to those of
232 the validated short-form of the questionnaire, the SSQ12 (Noble et al., 2013). The SSQ12
233 is a twelve-item questionnaire with the same SU, SP and QH subdomains that was the
234 result of an item selection process between three parties and based on different criteria,
235 involving the scores reported in the previous factor analysis of the SSQ (Akeroyd et al.,
236 2014). Given the familiarity with this version of the SSQ, and lack of need for another,
237 similar version of the SSQ (cf. Demeester et al., 2012; Jensen et al. 2009; Moulin et al.,
238 2019; von Gablenz et al., 2018), the remainder of the results are based on the SSQ12 as
239 well as the HHQ.

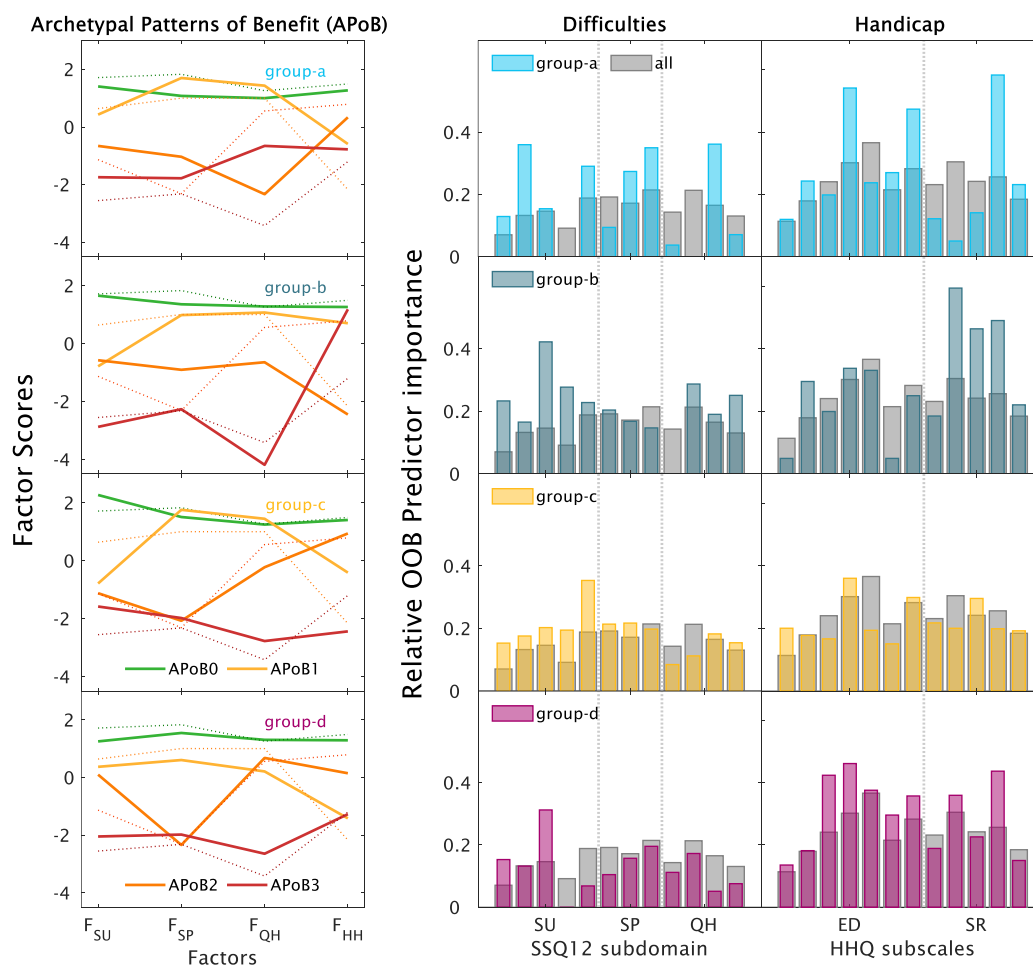
240 *Data-driven analysis*

241 Figure 2 shows the results of the data-driven analysis. The left panel reflects the
242 archetypal patterns of benefit (APoB) with respect to the latent factors for each of the
243 audiometric groups (a-d; lowercase to distinguish from the Sanchez-Lopez et al. (2020)
244 auditory profiles). The analysis of the overall data is indicated by the dotted lines. The
245 left panel reflects the “archetypal patterns” (APoB) with respect to the latent factors. The
246 right panel represents the estimated importance of the individual items of the
247 questionnaire. In the figure, only the three most important predictors in a given
248 subdomain are shown for simplification.

249 *Archetypal patterns of benefit*

250 Figure 2 (left panel) shows the result of the archetypal analysis. The optimal profile
251 (APoB0) showed a high score for all factors (green), which was similar for all of the

252 audiometric groups, as well as for the entire data set (dotted lines). The near-optimal
253 pattern (APoB1, yellow) was different for the different audiometric groups. For group-a
254 and group-d, the pattern showed high scores for the difficulties-related factors (F_{SU} , F_{SP} ,
255 F_{QH}) but a lower score for the handicap-related scores (F_{HH}). In contrast, for group-b and
256 group-c, APoB1 showed lower scores reflecting the difficulties in speech understanding
257 (F_{SU}). The four groups differed substantially in terms of the near-suboptimal pattern
258 (APoB2, orange). For group-a, the lowest score corresponded to quality-related
259 difficulties (F_{QH}), whereas for group-b, the lowest score reflected an increased handicap.
260 For group-c and group-d, the lowest score corresponded to difficulties with spatial
261 hearing, while the handicap-related scores were higher than in APoB1. The suboptimal
262 pattern (APoB3, red) showed the lowest scores for all factors in group-c. In group-d,
263 APoB3 represented the lowest scores for SU, QH and HH but not for SP. However, for
264 group-a the scores reflecting speech understanding and spatial hearing factors were lower
265 than the scores reflecting qualities, while group-b showed higher scores in the items
266 reflecting hearing handicap. The archetypal patterns of benefit corresponding to the
267 analysis of the overall data (dotted lines) resembled, to a large extent, the patterns
268 observed in group-d.



269

270 Figure 2. Data-driven analysis of subjective data stratified into audiometric groups. Each
 271 row corresponds to an audiometric group (a-d). Left panel: Archetypal patterns of benefit
 272 (APoB) resulting from step III of the method. Four patterns are ranked and labelled
 273 between optimal (APoB0; green) to suboptimal (APoB3; red). The analysis of the overall
 274 data is shown by the dotted lines. Right panel: Relative importance of the individual items
 275 estimated by the Out-of-the-bag permuted features delta error of a random forest. The
 276 twelve items of the SSQ12 are divided into three subdomains, speech understanding (SU),
 277 spatial hearing (SP), and qualities of hearing (QH), and the twelve items of the HHQ are
 278 divided into two subscales, emotional distress (ED) and social restrictions (SR). The grey
 279 bars show the results of using the same procedure on the entire dataset.

280 *Item importance estimation*

281 The importance of the subdimensions in terms of difficulties and restrictions were
282 estimated by the predictor importance of the individual items. The importance was
283 considered here as indicative of priorities for hearing rehabilitation. Figure 2 (middle
284 panel) shows the predictor importance corresponding to the items of the SSQ12. The
285 predictor importance is shown for each of the audiometric subgroups (in color) and the
286 overall data (in grey). The highest importance shown in the analysis of the overall data
287 corresponded to the items related to emotional distress (ED), social restrictions (SR) and
288 the spatial hearing (SP) difficulties. In contrast, the questions related to speech
289 understanding (SU), and hearing qualities (QH) questions were found to be less
290 important.

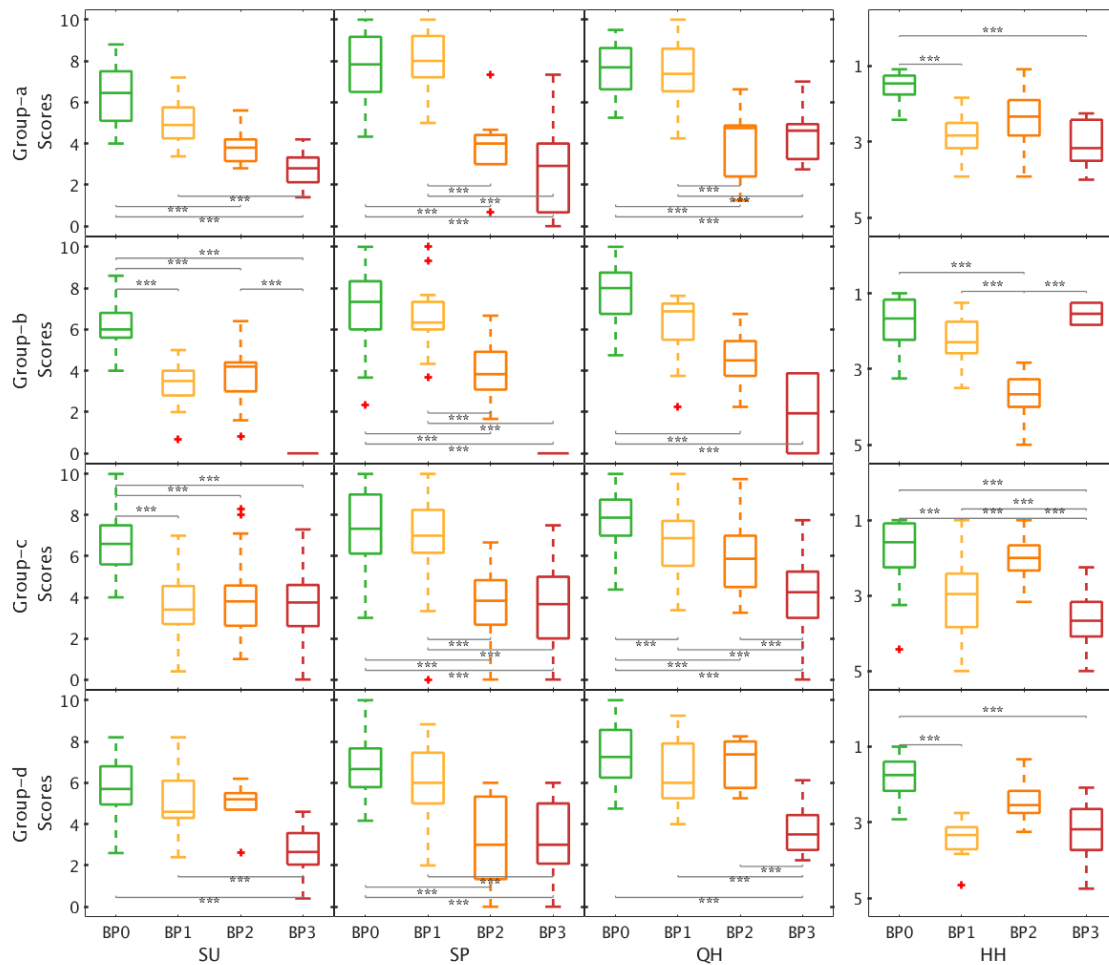
291 When analysing each audiometric group independently, the relative importance of the
292 subdomains was substantially different than the one showed in the analysis of the entire
293 dataset. Group-a showed higher importance than the overall group for SU in questions
294 related to conversations with multiple talkers in quiet, SP difficulties in terms of distance,
295 QH difficulties in the clarity of sounds and three HH questions on self-confidence and
296 social restrictions. Group-b showed higher importance for SP difficulties related to
297 speech-in-noise perception, QH difficulties related to listening effort and HH related to
298 social restriction. Group-c showed similar importance for SP and HH as the overall data.
299 The importance obtained for SU difficulties was higher than overall specifically for the
300 ability to get the start of the sentences during conversational turn-taking. Group-d showed
301 higher importance for speech-in-noise difficulties compared to the overall data, and the
302 highest importance generally for the HH subdomain.

303 All audiometric groups also showed less importance than overall for some items (i.e.,
304 when the coloured bars are much lower than the grey overall scores in the middle and

305 right panels of Figure 2). This importance, though, should only be interpreted as these
306 items not being useful in the prediction of the benefit profiles. For group-a there was
307 relatively less importance for noisy group conversations (SU), identifying music (QH)
308 and avoiding social situations (HH). For group-d, noisy group conversations (SU) was
309 also relatively less important. For group-b, there was relatively less importance for
310 distinguishing multiple sound sources (QH) and feeling self-conscious (HH). For group-
311 c, the only relatively less important item hearing-related nervousness/discomfort (HH).
312 Overall, the stratified approach for the analysis of priorities for hearing rehabilitation
313 revealed different patterns of importance for the different audiometric groups of listeners.

314 ***Benefit profiles and audiometric groups***

315 Once the participants have been stratified into audiometric groups (stage II of the method
316 summarized in Figure 1) and divided into benefit profiles (stage IV), the data
317 corresponding to the SSQ12 items and the HHQ is presented across the subdomains of
318 the difficulties and handicaps in Figure 3. Each row corresponds to an audiometric group
319 (a-d) and each column corresponds to a subdomain (SU, SP, QH and HH). The boxplots
320 corresponding to the four benefit profiles are presented in each subplot. Furthermore, the
321 significant differences between profiles, the result of pairwise comparisons using
322 Bonferroni's correction, are presented using brackets and asterisks.



323

324 Figure 3: Average item scores for each benefit profiles. The results are shown for each
 325 audiometric group (columns) and for each subdomain disability and handicap
 326 subdomains (columns). SU: speech understanding; SP: spatial hearing; QH: qualities of
 327 hearing, and HH: hearing handicap. The y-axis for the HH results (far right column) is
 328 reversed for comparison to the other results, as HH scores (lower = less handicap)
 329 represent the inverse of SU, SP and QH responses (lower = more difficulty). The lines
 330 with (***) refer to significant differences $p < 0.0001$ with Bonferroni corrections.

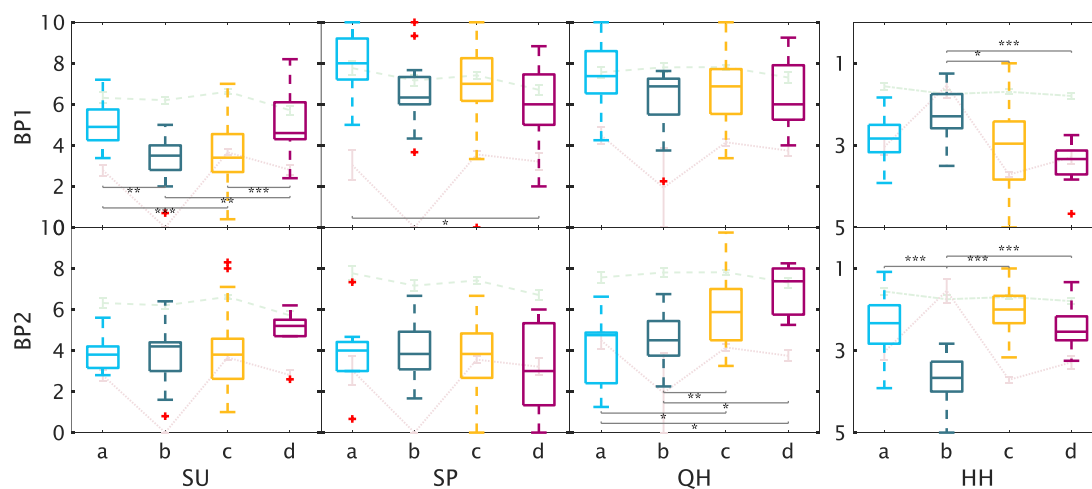
331 The optimal profile (BP0) was similar in all subgroups with scores above 6 for the three
 332 subdomains of the SSQ12 and below 2 for the HHQ. The suboptimal profile (BP3)
 333 showed more variability across audiometric groups; median BP3 scores were less than 4
 334 for the SSQ12 and greater than 3 for the HHQ except for group-b which showed HHQ
 335 much lower handicap (i.e., a median score near 1).

336 In group-a, benefit profiles BP2 and BP3 were significant different than the optimal
337 profile (BP0) for speech, spatial and qualities of hearing. However, only BP1 and BP3
338 showed significantly worse scores than BP0 for the hearing handicaps (right panel).
339 Furthermore, BP1 and BP2 were significantly different for spatial hearing and qualities.
340 In group-b, the BP1-3 were significantly lower than BP0 for speech understanding. For
341 spatial hearing and qualities of hearing, only BP2 and BP3 were significantly lower than
342 BP0. In group-c, BP1-3 all showed significantly lower scores than BP0 for speech and
343 qualities of hearing. In terms of handicap, BP1 and BP3 showed significantly lower scores
344 than BP0, whereas BP2 was not significantly lower than BP0. Finally, for group-d, only
345 the BP3 was significantly lower than the optimal benefit profile for speech understanding
346 and qualities of hearing. However, BP1 was significantly lower for hearing handicap.

347 The present results showed that the benefit profiles BP1 and BP2 showed significant
348 differences with the optimal (BP0) and suboptimal (BP3) profiles. The patterns observed
349 in each row suggested that each audiometric group might have different needs for
350 improvements to reach similar scores as BP0.

351 *Significant differences between audiometric groups*

352 Overall, the results presented in Figure 3 showed differences in benefit profiles across the
353 subdomains of hearing difficulties and hearing handicaps. Figure 4 shows the same data
354 but focused on the differences among the audiometric groups.



355

356 Figure 4: Average item scores for each audiometric groups. The results are shown for the
357 benefit profiles BP1 (top row) and BP2 (bottom row) and for each subdomain disability
358 and handicap subdomains (columns). SU: speech understanding; SP: spatial hearing; QH:
359 qualities of hearing, and HH: hearing handicap. The scores of the HH subdomain are
360 shown in a reverse y-axis since 1 corresponds to “good” and 5 to “poor” in the HHQ
361 questionnaire. The lines with (***) refer to significant differences $p < 0.0001$ (***) to $p <$
362 0.001 and (*) $p < 0.01$ with Bonferroni corrections.

363

364 The top row shows the BP1 for the four audiometric groups and across the subdomains.
365 The green dashed line reflects the optimal profile and the red dotted line the suboptimal
366 profile. The four audiometric groups showed significant differences in speech
367 understanding and hearing handicap. The participants in group-b and group-c showed
368 lower scores for SU while group-a and group-d showed scores closer to the optimal
369 benefit profile. In terms of hearing handicap, group-c and group-d showed significantly
370 higher (better) scores than group-b and inline with BP0. The bottom row shows the near-
371 suboptimal profile (BP2). The scores for SU and SP were not significantly different across
372 the four auditometric groups whereas the scores for qualities of hearing were significantly
373 lower for group-a and group-b. In terms of hearing handicap, group-b showed
374 significantly higher (poorer) scores than the other audiometric groups.

375 **Discussion**

376 *Audiometric groups and auditory profiles*

377 The analysis of the self-reported hearing difficulties and handicaps identified patterns of
378 benefit and priorities for continued post-fitting rehabilitation. The participants were
379 stratified into audiometric groups based on the audiometric distinctions (i.e., LF and HF
380 thresholds) in the auditory profiles from Sanchez-Lopez et al. (2020). Those auditory
381 profiles were the result of a data-driven analysis of multidimensional data that included
382 measures of audibility, loudness perception, speech perception, binaural processing
383 abilities and spectro-temporal resolution. Despite being derived from the previous
384 auditory profiles A-D, the audiometric groups a-d used in the present study to stratify the
385 participants cannot be considered equivalent to those profiles. There are notable
386 similarities and discrepancies between the objective hearing deficits in the previous
387 study's auditory profiles and the subjective difficulties and handicaps associated with the
388 current study's audiometric groups and their benefit profiles.

389 The current study's audiometric group-a listeners showed, on average, a high importance
390 of speech communication in quiet, spatial perception difficulties and a high priority for
391 rehabilitating hearing handicaps (Figure 2, first row), whereas in Sanchez-Lopez et al.
392 (2020), auditory profile A listeners showed a low degree of perceptual deficits and a
393 close-to-normal speech recognition. Audiometric group-b listeners had a single priority
394 for rehabilitation, difficulties in speech understanding (see BP1 in Figures 3 and 4),
395 consistent with the reduced speech-in-noise perception performance in Profile B listeners.
396 Audiometric group-c listeners showed priorities for rehabilitating difficulties in speech-
397 in-noise perception and handicaps (as shown BP1 in Figure 4), moderately consistent
398 with Profile C listeners who showed a high degree of perceptual deficits. Finally, the

399 audiometric group-d listeners showed a priority for rehabilitating hearing handicaps
400 followed by spatial hearing difficulties (BP1 and BP2 in Figure 4), whereas Profile D
401 listeners showed near-normal suprathreshold perception except for their abnormal
402 loudness perception. In summary, the one consistency in the objective and subjective
403 outcomes of the auditory profiles and current audiometric groups, respectively, is in their
404 difficulties with speech-in-noise.

405 The auditory deficits in the audiometric groups discussed above were associated with the
406 residual difficulties observed in the near-optimal benefit pattern (BP1). The patterns of
407 benefit revealed that these residual difficulties and handicaps were in many cases
408 independent, and minor difficulties do not always imply minor handicaps. This can be
409 observed in audiometric groups a and d, where the near-optimal pattern of benefit
410 corresponded to high scores in the SSQ12 items but low scores in the HHQ items. This
411 is in agreement with Noble et al. (2013), who concluded that SSQ12 should be
412 accompanied by the HHQ to provide a complete evaluation of the level of hearing
413 disability and handicap.

414 *Interpretation of the patterns of benefit*

415 The data-driven analysis revealed four benefit profiles, labelled BP0, BP1, BP2, BP3.
416 BP0, the “optimal” benefit profile, corresponds to patients with relatively minimal
417 difficulties and handicaps who do not require additional intervention and may only need
418 periodic follow-up visits (e.g., once per year). BP0 was characterized by scores above 6
419 in the SSQ12 and below 2 in the HHQ, similar to previous findings (Noble, Naylor,
420 Bhullar, & Akeroyd, 2012). The HCP should ensure that this optimal result does not
421 change by evaluating the intervention periodically. BP1, the “near-optimal” benefit
422 profile, corresponds to patients who would require some adjustments or instructions in
423 regular follow-up visits to improve the treatment. BP1 was characterized by a significant

424 reduction of only one or two subdomain scores (i.e., HH for groups a and d, SU for group
425 b, and SU and QH for group c), but not in others (e.g., SP), as shown in Figure 3. The
426 HCP should be aware of the limitations and allocate time to perform these improvements
427 successfully. BP2, the “near-suboptimal” profile, corresponds to an intervention that
428 requires major improvements. BP2 was characterized by a reduction of the scores in at
429 least two subdomains compared to the scores of BP0 (e.g., looking at Figure 3 first and
430 third rows, group-a and group-c showed lower scores for SU, SP and QH but not for HH).
431 Patients who show this pattern might reflect problems that require substantial adjustments
432 and additional intervention through structured sessions focused on alleviating different
433 difficulties and handicaps and/or providing assistive listening devices and training. BP3,
434 the “suboptimal” profile, corresponds to low benefit. BP3 was characterized by the
435 relatively greatest difficulties and handicaps. This suggests that the initial intervention
436 should be reconsidered. In this case, the HCP should evaluate the possibilities of changing
437 the device (e.g. considering a bone-anchored device if there are conductive loss
438 indications) as well as evaluate the need for a multi-disciplinary approach (e.g., intensive
439 auditory training, clinical psychological interventions).

440 ***Personalized hearing rehabilitation***

441 The present study shows the potential of data-driven analysis for providing insights for
442 improving the efficiency and efficacy of the hearing healthcare services. The KDD
443 approach applied in this study aims at providing new knowledge by applying suitable
444 methods to relevant datasets and focused on the interpretability of the results to obtain
445 new knowledge. However, the perspectives discussed in this section should be taken as
446 an outlook of the possibilities of this approach and not as a direct application of the
447 findings from this study.

448 Personalized hearing healthcare could be introduced in the hearing care clinic in the form
449 of stratified audiology. Since different patterns of difficulties and handicaps were
450 observed in different audiometric groups, the patients can be first stratified into
451 meaningful groups associated with specific hearing deficits and rehabilitation priorities
452 to minimize the confounds of sensory hearing deficits. In the present study this was
453 initially done by using pure-tone audiometry. Pure-tone audiometry can be complemented
454 by speech-in-noise perception tests, the assessment of loudness perception, binaural
455 processing abilities or spectro-temporal modulation sensitivity to better characterize the
456 individual's hearing deficits (Sanchez-Lopez et al., 2019). When such characterizations
457 are not possible, the results of the current study show that stratification based solely on
458 limited audiometric information can provide additional personalisation when coupled
459 with self-reported outcomes.

460 The common healthcare goal is an “optimal” intervention which would minimize the
461 activity limitations and participation restrictions by providing the most suitable
462 rehabilitation for each individual. In such a personalized hearing healthcare approach, the
463 outcome measures can be used to identify the benefit profile of the patient, a profile
464 associated with specific and important difficulties and restrictions result from the data-
465 driven approach. The use of, for example, SSQ12 and HHQ in a follow-up visit after an
466 acclimatization period would be useful for guiding the need for further testing and
467 intervention which can be more time-consuming but can provide a meaningful input for
468 the intervention. Furthermore, the present results suggest that an evaluation of the
469 intervention based on SSQ12+HHQ can lead the decision-making, but the intervention
470 required in each audiometric group might need a different pathway. Alternatively, open-
471 response questionnaires such as the Client-Oriented Scale of improvement (COSI; Dillon
472 et al., 1997) could help set individual priorities based on the important situations. COSI

473 is typically used, though, for setting goals and expectations, guiding the hearing-aid
474 selection and to quantify the improvements after the intervention, but not planning the
475 intervention (Dillon & So, 2000). Open-response questionnaires can be very useful for
476 identifying hearing difficulties; a future archetypal analysis focused on social situations
477 may provide greater insight. Nevertheless, participation restrictions have been previously
478 shown to be better evaluated using structured questionnaires such as HHQ (Stephens et
479 al., 2000) to help the decisions for further intervention. Based on the benefit profile
480 derived from these outcomes, a personalized rehabilitation program can be offered to the
481 patient where the intervention can then be focused on systematically overcoming specific
482 hearing difficulties or handicaps with the help of the present stratification. The goal would
483 be to obtain an optimal profile (close to BP0) at the end of the rehabilitation program.

484 The intervention is often prioritized in terms of sensory management, perceptual training
485 and counselling in a “holistic approach” (Boothroyd, 2007). In contrast, an initial post-
486 fitting assessment with items from the SSQ12 and HHQ based on the present findings, as
487 well as tempering expectations (Whitmer et al., 2016), could effectively guide further
488 rehabilitation beyond the initial intervention (i.e., after the hearing-aid fitting). For
489 example, the present study revealed that some difficulties were more important than
490 others for a given audiometric group. Speech-in-noise was important for audiometric
491 groups a and c but speech-in-speech was more important for groups b and d. The former
492 would lead to a device adjustment (e.g., increasing the scale of noise reduction or making
493 the “noisy/restaurant” setting the default), whereas the latter would lead to some
494 rehabilitative training on listening strategies (e.g., how best to position yourself in
495 conversation). These insights can also be useful for recreating the important situations in
496 a clinical environment and then evaluate the improvement by means of aided performance
497 tests. In cases with handicap priorities in their profile, the participation restrictions can be

498 evaluated using measures out of the clinic that can capture the user positive and negative
499 experiences in daily life (Lund et al. 2020). One last important factor that can be part of
500 this personalized hearing healthcare is to gather information about the auditory ecology
501 of the patient (Gatehouse et al., 2003) which could be captured by the active responses of
502 the patient (ecological momentary assessments; e.g., Holube et al., 2020; Smeds et al.,
503 2020) or their hearing devices (Christensen et al., 2019).

504 ***Limitations of the study***

505 The main limitation of the current study is that the data used in this analysis was collected
506 between 2002-2011. Hearing-aid technology has evolved substantially since then. The
507 ratio of bilateral fittings is also currently higher than it was when this data was collected.
508 The lower ratio of bilateral fittings represents a potential confound when interpreting the
509 spatial hearing difficulties in this group. Applying this archetypal analysis to a more
510 recent dataset might show different results, as residual difficulties and handicaps may
511 have diminished, although one would not expect the patterns or profiles to substantially
512 change.

513 A related limitation is the lack of additional information about the hearing-aid fitting
514 provided in the dataset. The data does not contain, for example, real-ear measurements or
515 details about the advanced features of the hearing aids nor the acoustic coupling.
516 Furthermore, there is no information related to any burdens or issues associated with the
517 use of hearing aids, which can be important for establishing viable measures of hearing-
518 aid benefit (Whitmer et al. 2016).

519 A limitation of the proposed personalization is the risk of using group profiling as a
520 unique characterization instead of individual profiling. The benefit profiles simplifying
521 the complex problem of evaluating each individual's hearing-aid benefit. The patients'

522 responses are the result of a retrospective judgement that often reflects their average
523 hearing experience but can also be influenced by specific events or individual factors
524 (Saunders, Chisolm, & Abrams, 2005; Wu, Stangl, Zhang, & Bentler, 2015). While this
525 approach can simplify the personalization process, the unique characterization of each
526 individual's benefit and rehabilitation needs often requires the expertise of the HCP in
527 asking additional questions about the user experiences and the openness and consistency
528 of the patient explaining their residual difficulties and restrictions. Therefore, the
529 flexibility and expertise a well-trained HCP provides to the hearing rehabilitation is
530 something that the envisioned personalized strategy should not affect detrimentally, but
531 work in favour of a better service.

532 **Conclusions**

533 A data-driven approach applied to self-reported residual difficulty and handicap
534 outcomes revealed four different benefit profiles -- optimal, near-optimal, near-
535 suboptimal and suboptimal -- for each of four clinical subpopulations based on the
536 audiometric differences in Sanchez-Lopez et al. (2020). The optimal benefit profiles for
537 each audiometric group set the difficulty and handicap minima that can be used to
538 determine the scale and type of post-fitting rehabilitation necessary to improve outcomes
539 for those with near-optimal to suboptimal profiles. Using short questionnaires, this
540 simplified personalisation scheme promotes a form of personalised care that can be
541 implemented clinically or remotely. The application of these patterns of benefit and the
542 use of stratification could improve clinical interventions of hearing loss as well as the
543 efficiency and quality of service in hearing care clinics.

544 **Acknowledgments**

545 The authors thank A. Ahrens and O. Cañete for their comments in an earlier version of
546 the manuscript. The authors acknowledge the valuable feedback from the members of the
547 Hearing Sciences Scottish Section during the realization of the present study.

548 **Declaration of Interest**

549 This work was supported by Innovation Fund Denmark Grand Solutions 5164-00011B
550 (Better hEARing Rehabilitation project) Oticon, GN Hearing, WSAudiology and other
551 partners (Aalborg University, University of Southern Denmark, the Technical University
552 of Denmark, Force, Aalborg, Odense and Copenhagen University Hospitals). The
553 funding and collaboration of all partners are sincerely acknowledged. The authors declare
554 that there is no conflict of interest. WW was supported by the Medical Research Council
555 [grant number MR/S003576/1]; and the Chief Scientist Office of the Scottish
556 Government

557 **References**

- 558 Akeroyd, M. A., Guy, F. H., Harrison, D. L., & Suller, S. L. (2014). A factor analysis of
559 the SSQ (Speech, spatial, and qualities of hearing scale). *International Journal of*
560 *Audiology*, 53(2), 101–114. <https://doi.org/10.3109/14992027.2013.824115>
- 561 Arlinger, S. (1998). Clinical assessment of modern hearing aids. *Scandinavian Audiology*,
562 27(4), 50-53.
- 563 Boothroyd, A. (2007). Adult Aural Rehabilitation: What Is It and Does It Work? *Trends*
564 *in Amplification*, 11(2), 63–71. <https://doi.org/10.1177/1084713807301073>
- 565 Cattell, R. B. (1988). The Meaning and Strategic Use of Factor Analysis. In J. R.
566 Nesselrode & R. B. Cattell (Eds.), *Handbook of Multivariate Experimental*
567 *Psychology* (pp. 131–203). Springer US. [https://doi.org/10.1007/978-1-4613-0893-](https://doi.org/10.1007/978-1-4613-0893-5_4)
568 5_4
- 569 Cox, R., Hyde, M., Gatehouse, S., Noble, W., Dillon, H., Bentler, R., Stephens, D.,
570 Arlinger, S., Beck, L., Wilkerson, D., Kramer, S., Kricos, P., Gagné, J.-P., Bess, F.,

- 571 & Hallberg, L. (2000). Optimal Outcome Measures, Research Priorities, and
572 International Cooperation. *Ear and Hearing*, 21(Supplement), 106S–115S.
573 <https://doi.org/10.1097/00003446-200008001-00014>
- 574 Cox, R. M. (2003). Assessment of subjective outcome of hearing aid fitting: getting the
575 client's point of view. *International Journal of Audiology*, 42(sup1), 90–96.
576 <https://doi.org/10.3109/14992020309074629>
- 577 Cox, R. M., & Alexander, G. C. (1995). The Abbreviated Profile of Hearing Aid Benefit.
578 *Ear and Hearing*, 16(2), 176–186. [https://doi.org/10.1097/00003446-199504000-](https://doi.org/10.1097/00003446-199504000-00005)
579 00005
- 580 Cox, R. M., & Alexander, G. C. (1999). Measuring Satisfaction with Amplification in
581 Daily Life: The SADL Scale. *Ear and Hearing*, 20(4), 306–320.
582 <https://doi.org/10.1097/00003446-199908000-00004>
- 583 de Ronde-Brons, I., Soede, W., & Dreschler, W. (2019). Systematic Evaluation of Self-
584 Reported Hearing Ability in Six Dimensions Before and After a Hearing Aid Trial.
585 *Journal of Speech, Language, and Hearing Research*, 1–15.
586 https://doi.org/10.1044/2019_JSLHR-H-19-0169
- 587 Demeester, K., Topsakal, V., Hendrickx, J.-J., Fransen, E., van Laer, L., Van Camp, G.,
588 Van de Heyning, P., & van Wieringen, A. (2012). Hearing Disability Measured by
589 the Speech, Spatial, and Qualities of Hearing Scale in Clinically Normal-Hearing
590 and Hearing-Impaired Middle-Aged Persons, and Disability Screening by Means of
591 a Reduced SSQ (the SSQ5). *Ear and Hearing*, 33(5), 615–616.
592 <https://doi.org/10.1097/AUD.0b013e31824e0ba7>
- 593 Dillon, H., Jamest, A., & Ginis, J. (n.d.). Client Oriented Scale of Improvement (COSI)
594 and Its Relationship to Several Other Measures of Benefit and Satisfaction Provided
595 by Hearing Aids. 17.
- 596 Dillon, H., & So, M. (2000). Incentives and Obstacles to the Routine Use of Outcomes
597 Measures by Clinicians. *Ear and Hearing*, 21(4), 2S.
- 598 Eisenack, K., Villamayor-Tomas, S., Epstein, G., Kimmich, C., Magliocca, N., Manuel-
599 Navarrete, D., Oberlack, C., Roggero, M., & Sietz, D. (2019). Design and quality
600 criteria for archetype analysis. *Ecology and Society*, 24(3), art6.
601 <https://doi.org/10.5751/ES-10855-240306>

- 602 Frawley, W. J., Piatetsky-Shapiro, G., & Matheus, C. J. (1992). Knowledge Discovery in
603 Databases: An Overview. *AI Magazine*, 13(3), 57.
604 <https://doi.org/10.1609/aimag.v13i3.1011>
- 605 Gatehouse, S. (1999). Glasgow Hearing Aid Benefit Profile : Derivation and Validation
606 of a Client-centered Outcome Measure for Hearing Aid Services. *J Am Acad Audiol*,
607 10, 80–103.
- 608 Gatehouse, S., & Akeroyd, M. (2006). Two-eared listening in dynamic situations.
609 *International Journal of Audiology*, 45(sup1), 120–124.
610 <https://doi.org/10.1080/14992020600783103>
- 611 Gatehouse, S., & Noble, W. (2004). The Speech, Spatial and Qualities of Hearing Scale
612 (SSQ). *International Journal of Audiology*, 43(2), 85–99.
613 <https://doi.org/10.1080/14992020400050014>
- 614 Goldstein, D. P., & Stephens, S. D. G. (1981). Audiological Rehabilitation: Management
615 Model I. *International Journal of Audiology*, 20(5), 432–452.
616 <https://doi.org/10.3109/00206098109072713>
- 617 Gatehouse, S., Naylor, G., & Elberling, C. (2003). Benefits from hearing aids in relation
618 to the interaction between the user and the environment. *International Journal of*
619 *Audiology*, 42(sup1), 77–85. <https://doi.org/10.3109/14992020309074627>
- 620 Hallberg, L. R. M. (1998). Evaluation of a Swedish version of the Hearing Disabilities
621 and Handicaps Scale, based on a clinical sample of 101 men with noise-induced
622 hearing loss. *Scandinavian Audiology*, 27(1), 21–29.
623 <https://doi.org/10.1080/010503998419669>
- 624 Héту, R., Getty, L., Philibert, L., Desilets, F., Noble, W., & Stephens, D. (1994). Mise au
625 point d'un outil Clinique pour la mesure d'incapacités auditives et de handicaps. *J*
626 *Speech-Lang Path Audiol*, 18, 83–95.
- 627 Holube, I., von Gablenz, P., & Bitzer, J. (2020). Ecological Momentary Assessment in
628 Hearing Research: Current State, Challenges, and Future Directions. *Ear and*
629 *Hearing*, 41, 79S. <https://doi.org/10.1097/AUD.0000000000000934>
- 630 Horn, J. L. (1965). A rationale and test for the number of factors in factor analysis.
631 *Psychometrika*, 30(2), 179–185. <https://doi.org/10.1007/BF02289447>
- 632 Jensen, NS, Akeroyd, MA, Noble, W, Naylor, G. (2009). *The Speech, Spatial and*

- 633 *Qualities of Hearing scale (SSQ) as a benefit measure*. In NCRAR conference on
634 The Ear-Brain System: Approaches to the Study and Treatment of Hearing Loss
635 2009 Oct.
- 636 Jorgensen, L. E. (2016). Verification and validation of hearing aids: Opportunity not an
637 obstacle. *Journal of Otology*, 11(2), 57–62.
638 <https://doi.org/10.1016/j.joto.2016.05.001>
- 639 Laplante-Lévesque, A., Hickson, L., & Worrall, L. (2010). Rehabilitation of Older Adults
640 With Hearing Impairment: A Critical Review. *Journal of Aging and Health*, 22(2),
641 143–153. <https://doi.org/10.1177/0898264309352731>
- 642 Lund, K., Ordoñez, R., Nielsen, J. B., & Hammershøi, D. (2020). Sentence-Based
643 Experience Logging in New Hearing Aid Users. *American Journal of Audiology*,
644 29(3S), 631–637. https://doi.org/10.1044/2020_AJA-19-00077
- 645 Mellor, J. C., Stone, M. A., & Keane, J. (2018). Application of Data Mining to “Big Data”
646 Acquired in Audiology: Principles and Potential. *Trends in Hearing*, 22,
647 233121651877681. <https://doi.org/10.1177/2331216518776817>
- 648 Moulin, A., Vergne, J., Gallego, S., & Micheyl, C. (2019). A New Speech, Spatial, and
649 Qualities of Hearing Scale Short-Form: Factor, Cluster, and Comparative Analyses.
650 *Ear and Hearing*, 40(4). [https://journals.lww.com/ear-](https://journals.lww.com/ear-hearing/Fulltext/2019/07000/A_New_Speech,_Spatial,_and_Qualities_of_Hearing.16.aspx)
651 [hearing/Fulltext/2019/07000/A_New_Speech,_Spatial,_and_Qualities_of_Hearing.](https://journals.lww.com/ear-hearing/Fulltext/2019/07000/A_New_Speech,_Spatial,_and_Qualities_of_Hearing.16.aspx)
652 16.aspx
- 653 Newman, C. W., Weinstein, B. E., Jacobson, G. P., & Hug, G. A. (1990). The Hearing
654 Handicap Inventory for Adults. *Ear and Hearing*, 11(6), 430–433.
655 <https://doi.org/10.1097/00003446-199012000-00004>
- 656 Noble, W., Jensen, N. S., Naylor, G., Bhullar, N., & Akeroyd, M. A. (2013). A short form
657 of the Speech, Spatial and Qualities of Hearing scale suitable for clinical use: The
658 SSQ12. *International Journal of Audiology*, 52(6), 409–412.
659 <https://doi.org/10.3109/14992027.2013.781278>
- 660 Noble, W., Naylor, G., Bhullar, N., & Akeroyd, M. A. (2012). Self-assessed hearing
661 abilities in middle- and older-age adults: A stratified sampling approach.
662 *International Journal of Audiology*, 51(3), 174–180.
663 <https://doi.org/10.3109/14992027.2011.621899>

- 664 Noble, W., Tyler, R., Dunn, C., & Bhullar, N. (2008). Hearing Handicap Ratings Among
665 Different Profiles of Adult Cochlear Implant Users. *Ear and Hearing*, 29(1), 112–
666 120. <https://doi.org/10.1097/AUD.0b013e31815d6da8>
- 667 Ragozini, G., Palumbo, F., & D’Esposito, M. R. (2017). Archetypal analysis for data-
668 driven prototype identification. *Statistical Analysis and Data Mining: The ASA Data*
669 *Science Journal*, 10(1), 6–20. <https://doi.org/10.1002/sam.11325>
- 670 Sanchez-Lopez, R., Fereczkowski, M., Neher, T., Santurette, S., & Dau, T. (2020).
671 Robust data-driven auditory profiling for precision audiology. *MedRxiv*.
672 <https://doi.org/10.1101/2020.04.05.20036442>
- 673 Sanchez-Lopez, R., Nielsen, S., Cañete, O., Fereczkowski, M., Wu, M., Neher, T., Dau,
674 T., & Santurette, S. (2019). A Clinical Test Battery for Better hEARing
675 Rehabilitation (BEAR). Towards the prediction of individual auditory deficits and
676 hearing-aid benefit. In *Proceedings of the 23rd International Congress on Acoustics*
677 (pp. 3841-3848). Deutsche Gesellschaft für Akustik e.V..
678 <https://doi.org/10.18154/RWTH-CONV-239177>
- 679 Simeonsson, R. (2000). Revision of the International Classification of Impairments,
680 Disabilities, and Handicaps Developmental issues. *Journal of Clinical*
681 *Epidemiology*, 53(2), 113–124. [https://doi.org/10.1016/S0895-4356\(99\)00133-X](https://doi.org/10.1016/S0895-4356(99)00133-X)
- 682 Smeds, K., Gotowiec, S., Wolters, F., Herrlin, P., Larsson, J., & Dahlquist, M. (2020).
683 Selecting Scenarios for Hearing-Related Laboratory Testing. *Ear and Hearing*, 41,
684 20S. <https://doi.org/10.1097/AUD.0000000000000930>
- 685 Stephens, D., Jones, G., & Gianopoulos, I. (2000). The use of outcome measures to
686 formulate intervention strategies. *Ear and Hearing*, 21(4 Suppl), 15S-23S.
687 <https://doi.org/10.1097/00003446-200008001-00004>
- 688 Vestergaard Knudsen, L., Öberg, M., Nielsen, C., Naylor, G., & Kramer, S. E. (2010).
689 Factors Influencing Help Seeking, Hearing Aid Uptake, Hearing Aid Use and
690 Satisfaction With Hearing Aids: A Review of the Literature. *Trends in*
691 *Amplification*, 14(3), 127–154. <https://doi.org/10.1177/1084713810385712>
- 692 von Gablenz, P., Otto-Sobotka, F., & Holube, I. (2018). Adjusting Expectations: Hearing
693 Abilities in a Population-Based Sample Using an SSQ Short Form. *Trends in*
694 *Hearing*, 22, 2331216518784837. <https://doi.org/10.1177/2331216518784837>

- 695 Whitmer, W. M., Howell, P., & Akeroyd, M. A. (2014). Proposed norms for the Glasgow
696 hearing-aid benefit profile (Ghabp) questionnaire. *International Journal of*
697 *Audiology*, 53(5), 345–351. <https://doi.org/10.3109/14992027.2013.876110>
- 698 Whitmer, W. M., Wright-Whyte, K. F., Holman, J. A., & Akeroyd, M. A. (2016). *Hearing*
699 *Aid Validation* (G. R. Popelka, B. C. J. Moore, R. R. Fay, & A. N. Popper (eds.);
700 Vol. 56, Issue September 2016, pp. 291–321). Springer International Publishing.
701 https://doi.org/10.1007/978-3-319-33036-5_10
- 702