

# Ongoing outbreak of COVID-19 in Iran: challenges and signs of concern

M. Ghafari<sup>1\*</sup>, B. Hejazi<sup>2</sup>, A. Karshenas<sup>3</sup>, S. Dascalu<sup>1,4</sup>, L. Ferretti<sup>5</sup>, A. Ledda<sup>6</sup>, A. Katzourakis<sup>1\*</sup>

<sup>1</sup> Department of Zoology, Peter Medawar Building for Pathogen Research, University of Oxford, Oxford, UK. <sup>2</sup> Department of Physics, Wesleyan University, Middletown, Connecticut, USA.

<sup>3</sup> Department of Engineering, University of Oxford, Oxford, UK. <sup>4</sup> Avian Influenza Virus, The Pirbright Institute, Woking, UK. <sup>5</sup> Big Data Institute, Li Ka Shing Centre for Health Information and Discovery, University of Oxford, Oxford, UK. <sup>6</sup> Department of Infectious Disease Epidemiology, Imperial College London, UK.

\*Corresponding author.

Email: [mahan.ghafari@zoo.ox.ac.uk](mailto:mahan.ghafari@zoo.ox.ac.uk) (MG); [aris.katzourakis@zoo.ox.ac.uk](mailto:aris.katzourakis@zoo.ox.ac.uk) (AK)

## 1 Abstract

2 Since the first outbreak in China, the Coronavirus Disease 2019 (COVID-19) has rapidly  
3 spread around the world. Iran was one of the first countries outside of China to report  
4 infections with COVID-19. With nearly 100 exported cases to various other countries,  
5 it has since been the epicentre of the outbreak in the Middle east. By examining the  
6 age-stratified COVID-19 case fatality rates across the country and 14 university hospitals  
7 in Tehran, we find that, in younger age groups, the reported cases on 13/03/2020 only  
8 capture less than 10% of symptomatic cases in the population. This indicates significant  
9 levels of under-reporting in Iran. Using the 18 full-genome sequences from cases with  
10 a travel history or link to Iran, as well as the one full genome sequence obtained from  
11 within the country, we estimate the time to the most recent common ancestor of sequences  
12 which suggests the likely start of the outbreak on 21/01/2020 (95% HPD: 05/12/2019 -  
13 14/02/2020) with an approximate doubling time of 3.07 (95% HPD: 1.68 - 16.27). Also,  
14 based on known exported cases to Oman, Kuwait, Lebanon, and China, we estimate the  
15 outbreak size on 25 February and 6 March to be around 13,700 (95% CI: 7,600 - 33,300) and  
16 60,500 (43,200 - 209,200), respectively. Knowing the size of the outbreak at two time points  
17 and the typical doubling times associated with the COVID-19 epidemics in countries across  
18 Europe and North America, we can independently verify that the likely start of epidemic  
19 in Iran is around 15/01/2020 (27/12/2019 - 24/01/2020). Our assessment of the fate of the  
20 epidemic based on current levels of non-pharmaceutical interventions implemented by the  
21 government suggests upward of 10 million cases (IQR:  $6.7 \times 10^6$  -  $1.8 \times 10^7$ ) and 100,000 ICU  
22 beds required (IQR:  $7.7 \times 10^4$  -  $1.4 \times 10^5$ ) during the peak of the epidemic with more than

23 100,000 cumulative deaths (IQR:  $1.8 \times 10^5$  -  $2.4 \times 10^5$ ). We also predict a peak in demand  
24 for ICU beds on 21/04/2020 (IQR: 06/04/2020 - 23/05/2020). The large span of the peak  
25 of the ICU demand is a result of two separate peaks, with the first occurring at around  
26 15/4/2020 and the second in approximately a months time. The latter is also expected to  
27 last longer and is based on the relatively relaxed social distancing measures in place. The  
28 exact magnitude and timing of the peaks strictly depends on levels of interventions and  
29 can change significantly upon new information or change of policy. We caution that a lack  
30 of, or relaxed, stringent intervention measures, during a period of highly under-reported  
31 spread, would likely lead to the healthcare system becoming overwhelmed in the next few  
32 months.

## 33 Introduction

34 The current COVID-19 pandemic had a major impact on societies all around the world.  
35 While the first outbreak occurred in Wuhan, China, the SARS-CoV-2 virus responsible  
36 for the disease spread rapidly to other parts of China and the world. Iran was one of  
37 the first countries outside of China to be hit by the COVID-19 pandemic; it has since  
38 exported many cases to regional countries in the Middle East, such as Kuwait, Oman,  
39 Bahrain, Afghanistan, Iraq, and Pakistan, as well as to more distant countries such as  
40 Canada, Australia, Germany, and the UK. The first reported cases in Iran were of two  
41 deceased individuals in the city of Qom on 19 February 2020. The reported cases in several  
42 provinces around the country started to grow in a matter of a few days following the two  
43 cases in Qom (see Fig. 1 and the time lapse video of the COVID-19 outbreak across Iran  
44 during the first 32 days of the epidemic in the Supplementary materials). Some of the  
45 early reports suggest the first two cases could have been infected by a merchant who had  
46 reportedly travelled to China [Robin Wright, 2020]. However, with COVID-19, identifying  
47 the so-called ‘patient zero’ is problematic, due to the high rates of asymptomatic and  
48 pauci-symptomatic infections [Li et al., 2020b]. The most likely route of virus spread  
49 from China to Iran was via (asymptomatic) air travelers. Infected individuals typically  
50 show no symptoms for about 5 days [Li et al., 2020a] or sometimes no symptoms at all  
51 [Bai et al., 2020], while silently spreading the virus and therefore hindering control efforts  
52 [Ferretti et al., 2020]. Since Qom is the religious capital of the country with millions of  
53 pilgrims visiting its shrines every year, transmission chains likely grew rapidly across several  
54 parts of the country. In response to the first cases, the government put in place minimal  
55 containment strategies which failed to limit the spread of the epidemic, particularly during  
56 the early stages, at a time when movement associated with visits to shrines may have  
57 contributed to enhancing the spread.

58 The genomic data collected from cases with a history of travel to Iran during the  
59 last week of February and early March suggest the emergence of a clade of SARS-CoV-2  
60 [Eden et al., 2020, Rambaut et al., 2020]. These sequences show signs of extreme genetic

61 similarity possibly suggesting the outbreak may have started from a single transmission  
62 event as suggested by some early analysis from NextStrain [Bell et al., 2020, Hodcroft et al.,  
63 2020]. Although this analysis cannot rule out the possibility of separate introductions from  
64 unsampled sources in the population. We note that, as of 14/04/2020, there has been  
65 only one full-genome sequence from inside Iran. There are 20 sequences collected from  
66 individuals that flew out of Iran and were tested and had their viral genomes determined  
67 in other countries, which can serve to determine the parameters of the epidemic in Iran.  
68 Two of these sequences are epidemiologically linked and cannot be used for these purposes.  
69 Genomic data originating from Iranian travellers should contain the genetic signals that  
70 characterised the local epidemic growth of the country they travelled from. Early analyses  
71 of genomic data from China and across the world have revealed aspects of the timing and  
72 transmission of the virus [Lu et al., Volz et al., 2020].

73 In this study we investigate several aspects of the COVID-19 outbreak in Iran. We  
74 compare the reported number of cases and deaths in Iran to other countries that have a  
75 comparable outbreak size. The comparison of data shows that the numbers from Iran do  
76 not follow the expected global pattern for this disease which we argue is caused by the  
77 limited testing facilities available in the country. Studying the age-specific case fatality  
78 ratio in Iran provides further evidence that the outbreak in Iran is likely much larger than  
79 what the official numbers suggest. We infer the start date of the epidemic in Iran as well  
80 as the rate of exponential growth from genetic data largely from travellers from Iran to  
81 other countries. We also predict an approximate date for when the outbreak started in  
82 the country based on the analysis of travel data on the number of cases that have been  
83 exported to other countries from Iran. We suggest that the outbreak had started about  
84 a month before the first deaths related to COVID-19 were reported. Other studies have  
85 shown that sustained transmission may exist up to a month prior to the first reported  
86 death [Lourenço et al., 2020]. Furthermore, we examine the burden that this epidemic has  
87 on the healthcare system under different intervention scenarios and how different measures  
88 can help limit the surge in demand for ICU beds and curtail the size of the outbreak. In  
89 the appendix we briefly examine the possibility of data manipulation using Benford’s law  
90 and find no evidence in support of such a claim. We also give a detailed explanation of  
91 our analysis of estimating the outbreak size using air travel data. We have also created a  
92 timeline of all major events related to the COVID-19 outbreak in Iran in the Supplementary  
93 materials.

## 94 **Reports from the COVID-19 outbreak in Iran**

95 Six days after the first two deaths were announced by Iran’s Ministry of Health, various  
96 sources from hospitals around the country told BBC Persian [2020e] that there have been  
97 at least 210 deaths related to COVID-19 with most cases coming from Tehran while official  
98 reports only showed 34 deaths at the time. On the same day, Radio Farda [2020b] reported  
99 that the World Health Organization Director-General Tedros Adhanom Ghebreyesus said

100 that 97 cases in 11 countries originated in Iran while the total number of cases in the  
101 country at that time were 281. Similar reports from Iran International [2020] on 2 March  
102 state there were a total of 428 deaths in the country while official numbers reported by the  
103 government were 66. Iran International further reported on the same day that according  
104 to the president of the University of Health Sciences of Golestan province, their medical  
105 team was of the opinion that 594 patients that were hospitalised in the province were  
106 infected with COVID-19. He added that between 18 to 29 February they had sent 135  
107 samples of COVID-19 tests from patients in Golestan to Tehran for testing and only 26  
108 results were reported back with 12 confirmed cases, of which 5 had died and the other 7  
109 had recovered and been sent home. He stated that according to the ministries protocols,  
110 not all patients with severe breathing difficulties were going to receive COVID-19 testing.  
111 These reports and various similar stories from other provinces highlight that insufficient  
112 testing equipment is one of the major challenges the country is facing since the start of the  
113 outbreak which is likely to have led to significant underestimation of active cases, thereby  
114 delaying appropriate public health interventions. These issues would have been exacerbated  
115 due to limited governmental support for employers and businesses affected by the outbreak.  
116 Indeed, fears over economic uncertainty in the country have prompted many citizens not to  
117 follow recommendations from the government which might have impacted them financially  
118 such as working from home or temporarily closing their businesses [Basravi, 2020, Reality  
119 Check team, 2020, Wintour, 2020]. As a consequence, many activities followed as usual,  
120 and, at best, the impact of early public health measures in Iran only had a marginal effect.

## 121 **Cloud of uncertainty over reported numbers from Iran**

122 One of the main characteristics of countries with major COVID-19 outbreaks is the expo-  
123 nential increase of number of cases over time. By comparing the reported cases and deaths  
124 in several countries with sizable outbreaks, we can see that Iran was also initially on an ex-  
125 ponential trajectory (see Fig. 2a and Fig. 2b). After reaching around 7,000 reported cases  
126 by mid-March, we see a significant deviation from the exponential trajectory which may  
127 partly be associated with school and university closures announced by the government on 5  
128 March. Despite the fact that first cases in several European countries were reported in mid  
129 to late February and that similar or stricter intervention policies were implemented around  
130 the same time, it is surprising to see the reported numbers from Iran are much lower than  
131 those countries. In particular, the constant accumulation of new deaths from 21/03/2020  
132 to 10/04/2020 in Iran suggests that post-mortem testing is likely capped by the limited test  
133 kits available in the country. Figure 2c compares daily Case Fatality Ratio (CFR) between  
134 several countries (daily CFR = daily reported deaths / daily reported cases). We note  
135 that the sharp decline of daily CFR from late February to early March in Iran is due to  
136 having 100% CFR on 19 February which dropped as new tests were taken and the number  
137 of cases started to grow. We also see a second peak in CFR on 23 March which, again,  
138 could be due to testing capacity not catching up with the rate at which the epidemic is

139 growing in the country. Another possible explanation for the second peak is that changes  
140 of population behaviour (e.g. due to control or awareness of increasing deaths) can lead to  
141 a reduction in transmission, which, naturally, leads to a drop in reported infections while  
142 incidence in deaths follows this reduction with some delay in time.

## 143 Results

### 144 Age-stratified analysis of fatality rates in Iran: evidence of significant 145 under-reporting

146 We examine the only nationwide data available for age-specific naïve Case Fatality Ratio  
147 (nCFR) obtained from the Iranian Health Ministry on 13/03/2020 [The Islamic Republic  
148 News Agency(IRNA), 2020] and compare it to the reports on 04/04/2020 from 14 hospitals  
149 associated with Tehran University of Medical Sciences [Tehran university school of medicine  
150 COVID-19 response team, 2020] and the Chinese Center for Disease Control reported on  
151 11/02/2020 [The Novel Coronavirus Pneumonia Emergency Response Epidemiology Team,  
152 2020]. According to the Ministry of Health, there were a total of 11,364 reported cases and  
153 514 total deaths across the country on 13/03/2020. Tehran University of Medical Sciences  
154 hospitals reported 8,840 cases with 654 deaths and the study by CDC China reported  
155 44,672 confirmed cases and 1,023 deaths in the Mainland. We see a noticeable difference  
156 between nCFR in Iran and China across all age groups (see Fig. 3a). In particular, Iran's  
157 nCFR for < 50 years-old is the same as those reported from hospitalised patients in Tehran  
158 and more than 10 times higher than China which suggests that Iran is only reporting severe  
159 cases of the infection. There also seems to be an underestimation of deaths in the > 80  
160 age-group in Iran compared to those in China. We also note that nCFR will likely be an  
161 underestimate of the true CFR in Iran because the results from all cases are not known  
162 yet and the epidemic is still ongoing. To adjust for such biases in CFR, e.g. using a CFR  
163 correction method developed by Russell et al. [2020], we need to have temporal data, but  
164 we were not able to obtain more than one data point as of 10/04/2020.

165 A recent analysis by researchers at Imperial College London [Triggle, 2020] showed  
166 that the age-specific risk of dying from COVID-19 greatly overlaps with 'normal' annual  
167 death rate in males and females. This suggests those dying from COVID-19 could have  
168 died within that same year and that SARS-CoV-2 has accelerated this. However, we see  
169 a completely different picture in Iran. Figure 3b shows a significant increase in death rate  
170 due to COVID-19 compared to the annual rates in almost all age categories which is also  
171 likely due to under-reporting of cases in Iran.

## 172 **When did the epidemic start and how fast did it grow in Iran?**

### 173 **Phylogenetic analysis**

174 We used 20 whole genome sequences obtained from patients that had travelled out of  
175 Iran during the current epidemic (and their infections were reported outside the country),  
176 combined with the first whole genome sequence obtained from Iran, in order to estimate pa-  
177 rameters of the epidemic using population genetic models implemented in BEAST [Suchard  
178 et al., 2018]. We reconstructed a maximum likelihood phylogenetic tree of all sequences  
179 that were linked to Iran using PhyML [Guindon et al., 2010] (see Fig. 4). Two of the se-  
180 quences were from epidemiologically linked patients, and were therefore removed from the  
181 dataset as they would bias estimators based on the coalescent, resulting in 19 sequences  
182 overall including the genome from Iran. We have highlighted those in the metadata in the  
183 supplementary files. We used the known sampling times, with a CTMC rate reference prior  
184 on the rate, in order to estimate the evolutionary rate from this particular sample from  
185 serial samples. We implemented the exponential growth model, with a lognormal prior on  
186 population size (mean=1, stdev=2), and the growth rate implementation with a laplace  
187 prior (scale=100), and an HKY+G model of substitution. Our inferred substitution rate  
188 is consistent with other studies [Boni et al., 2020, Rambaut, 2020] at  $1.66 \times 10^{-3}$  (HPD:  
189  $2.18 \times 10^{-4}$  -  $3.31 \times 10^{-3}$ ), and the exponential growth rate was 82 in units of years (HPD:  
190 15.55-150.34), corresponding to a doubling time of around 3 days (95% HPD: 1.68-16.27).  
191 The age of the root is placed on 21/01/2020 (95% HPD: 05/12/2019-14/02/2020).

### 192 **Epidemiological analysis**

193 Two recent studies by Tuite et al. [2020] and Zhuang et al. [2020] estimated the size of  
194 the outbreak in Iran on 25 February to be approximately 17,000 (4,800 - 44,500). The  
195 study by Tuite et al. [2020] used the method developed by Fraser et al. [2009] to estimate  
196 the outbreak size based on 3 exported cases to the UAE, Lebanon, and Canada. Their  
197 estimates relies on information about the average length of stay of visitors (taken from  
198 Encyclopedia of Nations [2003]), proportion of international travels who are residents of  
199 Iran [World Tourism Organisation, 2020], and the ‘infectious disease vulnerability index’,  
200 a proxy for measuring the country’s ability to detect cases. Apart from Imam Khomeini  
201 airport (the one with the highest number of international passengers), they only included  
202 Rasht and Arak airports with a total of less than 10,000 international passenger per year  
203 and exclude from their analysis major airports in Mashhad, Shiraz, and Isfahan with more  
204 than 10 million international travellers. The other study by Zhuang et al. [2020] used the  
205 Binomial sampling method [Imai et al., 2020] to estimate the outbreak size based on 5  
206 exported cases to Oman, UAE, and Lebanon. They used the VariFlight [2020] platform  
207 to estimate the weekly number of passengers to Iran. Although we can not independently  
208 verify those numbers, our estimates are fairly similar (see Table 3). The method used by  
209 Zhuang et al. [2020] demands fewer parameters and produces similar results as Tuite et

210 al. [2020], but it still does not account for the variation in catchment population size of  
211 international airports in Iran and the expected exposure time of those exported passengers.

Here, we estimate the outbreak size in late February and early March using a detailed list of flight information from all airlines and try to accurately estimate the flux of passengers to/from four international airports in Iran with the highest number of weekly international flights to countries reporting exported cases from Iran (see Table 3, and supplementary materials) before the Gulf Cooperation Council countries suspended their flights to Iran. To capture the variation that exposure time,  $t$ , and catchment population size,  $M$ , create on the probability of having an exported case on a flight,  $p = \frac{tD}{M}$ , where  $D$  is the daily passenger flux, we use a Beta-binomial distribution where the compound Beta function is defined on the random variable  $\zeta = \frac{t}{M}$  and a support of  $(\frac{t_{min}}{M_{max}}, \frac{t_{max}}{M_{min}})$  where  $t_{min} = 20$ ,  $t_{max} = 50$ ,  $M_{min} = 4 \times 10^7$ , and  $M_{max} = 5.56 \times 10^7$ . Then, for each country,  $i$ , in Table 3 with  $n_i$  cases and corresponding success probability  $p_i$  of finding a case, we can calculate the expected outbreak size  $\hat{\lambda}$  using the likelihood function given by

$$\hat{\lambda}_i = \arg \max_{\lambda_i} \binom{\lambda_i}{n_i} \int_{\zeta_{min}}^{\zeta_{max}} p_i^{n_i} (1 - p_i)^{\lambda_i - n_i} g(p_i) dp_i,$$

212 where  $g(p)$  is the Beta distribution for the country  $i$  with shape parameters  $\alpha = \beta = 2$   
213 (empirically fitted). To account for asymptomatic cases going undetected at the airports,  
214 we further assume that the ‘true’ number of exported cases, accounting for asymptomatic or  
215 mildly symptomatic cases, is twice those reported – we note that this is a conservative  
216 approximation in that the true percentage of symptomatic cases is likely higher. We  
217 carried out the likelihood test for each country separately (see Appendix B) and, based on  
218 our analysis, we conclude that due to large passenger flow from Iran to Iraq and the UAE,  
219 numerous cases may have gone undetected. Therefore, we only include exported cases to  
220 Oman, Lebanon, and Kuwait to calculate the outbreak size on 25 February. We take a  
221 similar approach to estimate the outbreak size on 6 March based on 28 exported cases to  
222 China (see Fig. 5). We estimate the outbreak size on 25 February to be 13,700 (95% CI:  
223 7,600 - 33,300) and on 6 March 60,500 (95% CI: 43,200 - 209,200), using a range of typical  
224 doubling times 2.5 - 4 days we can extrapolate the number of cases backwards to find the  
225 start of the epidemic in Iran. Assuming an 18 days delay from the onset of illness to death  
226 [Linton et al., 2020, Verity et al., 2020, Wu et al., 2020], we can also estimate the number  
227 of deaths in the country and compare it to reports from Iran International [2020], Radio  
228 Farda [2020a], and official numbers on those dates (see Fig. 6b).

## 229 **Burden of the epidemic on the healthcare system**

230 To study different scenarios for how the epidemic in Iran may unfold in the coming weeks  
231 and months and its burden on the healthcare system, we use the SEIR model developed  
232 by Neher et al. [2020]. We summarise all the model parameters and their corresponding  
233 values in Table 1 and Table 2. We assume that a few (1-2) infected individuals sparked

234 the COVID-19 outbreak in early January and the rest of the population consists of suscep-  
235 tible individuals who become exposed to SARS-CoV-2 after an effective contact with an  
236 infectious person. After an incubation period of 4 days, exposed individuals of age-group  
237  $a$  will develop either a clinical infection with probability  $1 - m_a$  and become hospitalised,  
238 or experience a subclinical infection with probability  $m_a$  where they recover or become  
239 severely ill after 5 days. Those hospitalised may recover or be moved to the ICU stage  
240 after 8 days where they may either die or stabilise after 10 days. We assume that removed  
241 individuals are immune to reinfection over the period we simulated the epidemic (1 year) –  
242 we still do not know how long-lasting immunity will be to COVID-19, but we used similar  
243 assumptions to other studies. Deaths are assumed to occur only among severe cases (in  
244 the ICU). The fractions of hospitalisation, ICU use, and death are estimated using data  
245 from China, and any differences in Iran’s population could affect our estimates of health  
246 care demand. Our assessment of the expected number of imported cases from China in  
247 December and January from three airports in Beijing, Shanghai, Guangzhou, to Tehran  
248 suggests that the contribution from importation is likely going to be very small.

249 In our modelling analysis, we considered a range of scenarios of the epidemic from  
250 moderate to high levels of intervention efficacy according to set dates in policy announce-  
251 ments by the government (Table 4). Our finding suggests that the current policy measures  
252 are likely not going to be enough to push the effective reproduction number below one  
253 (Fig. 7a) and the outbreak is going to continue across the country in the coming months  
254 (Figures 7c, 7d, and 7e). It also suggests a very large surge in patients requiring intensive  
255 care from early April to late August (Fig. 7b) which is going to overwhelm the healthcare  
256 system given the 3,790 ICU beds currently available in the country [Phua et al., 2020].  
257 Unless extreme intervention measures are in place to bring the epidemic under control,  
258 we project 221,000 cumulative deaths (IQR:  $1.8 \times 10^5$  -  $2.4 \times 10^5$ ) (see Fig. 7b). We also  
259 find there is likely going to be a second peak 40-80 days following the first peak in early  
260 April (Fig. 7e). However, the likely occurrence of the second peak is strictly dependent  
261 on the current and future intervention policies and can, as a result, vary considerably in  
262 magnitude and duration.

## 263 Discussion

264 In this study we provide a timeline of what has likely occurred since the start of the  
265 COVID-19 epidemic in Iran. Using the available genetic data, as on 15/04/2020, from  
266 infected cases with a travel link to Iran and the one full-genome sequence sample from  
267 inside the country, we estimated the doubling time associated with early stages of the  
268 COVID-19 outbreak in Iran to be around 3 days (95% HPD: 1.68-16.27) which is close to  
269 the estimates from other countries in Europe and Northern America. Our phylogenetics  
270 and epidemiological analysis places the likely start of transmissions back to 21/01/2020  
271 (95% HPD: 05/12/2019-14/02/2020). This suggests the virus had been circulating for,



272 at least, a month prior to first official reports in Iran. We further estimate that, based  
273 on travel data, by 25 February there were approximately 13,700 (95% CI: 7,600 - 33,300)  
274 and by 6 March 60,500 (43,200 - 209,200) cases in Iran, which is about a hundred times  
275 higher than the official numbers at that time. The large discrepancy is partly due to late  
276 detection as well as limitations in testing capacity particularly during the early stages of  
277 the epidemic. Many of the symptomatic cases have not had access to testing and most tests  
278 were done only on clinical patients in hospitals and intensive care units and are processed  
279 in a few centralised labs. Therefore, potentially a large number of mild and subclinical  
280 cases in Iran are missed. By comparing the nationwide age-stratified nCFR with those  
281 from hospitals in Tehran, we see that those two are almost identical for <50 years-old  
282 individuals indicating significant levels of under-reporting of cases in those age-groups. We  
283 note that the nCFR has an internal bias when calculated during the exponential growth of  
284 the epidemic [Baud et al., Spychalski et al., Verity et al., 2020] as the number of deaths lag  
285 behind confirmed cases by 1-2 weeks. However, correcting for this bias likely increases the  
286 CFR estimates in Iran suggesting that the under-reporting is even higher when compared  
287 to CFR estimates from China.

288 One of the first major interventions implemented by the government was the announce-  
289 ment of indefinite school and university closures on 5 March which was followed by a 14-day  
290 period of national New Year's holiday where most businesses were closed. However, several  
291 reports indicate that nearly 8.5 million citizens travelled during this period [BBC Persian,  
292 2020c] which suggests that lack of enforced travel restrictions and social distancing mea-  
293 sures allowed the transmission to go almost unchecked in various parts of the country. In  
294 addition, on 5 April, the government announced that workers may return to work and there  
295 will be no lockdown measures in the country. The quick return to normal life while the  
296 epidemic seems to be slowing down may result in a loss of control of the epidemic spread  
297 and likely result in SARS-CoV-2 becoming endemic in Iran and potentially creating sub-  
298 sequent waves of the epidemic in the country in autumn or winter which can also become  
299 a significant burden on the healthcare system of the country. This can potentially be a  
300 major issue for many countries particularly if they are attempting to control the outbreak  
301 and have to prevent the resurgence of new cases in their countries [Kraemer et al., 2020].  
302 Despite the fact that several European airlines have cancelled their flights to Iran indef-  
303 initely, passengers can still travel in and out of Iran through intermediary countries like  
304 Qatar and UAE.

305 So far, despite the local spread from Iran to other countries in the region such as  
306 Pakistan, Afghanistan, Oman, Kuwait, Lebanon, and Bahrain there has been no strong  
307 indication of a major outbreak in those countries. We cannot rule out under-reporting in  
308 those countries, but it has also been suggested that temperature and humidity could play  
309 a role in sustaining an epidemic in a country, although the effect of these is debated and  
310 may be small [Ficetola and Rubolini, 2020, Notari, 2020, Sajadi et al., 2020] Any effects  
311 of climate are likely to be most relevant to particular outbreaks in specific locations and  
312 are unlikely to be relevant to the overall pandemic outbreak given a susceptible population

313 [Baker et al., 2020]. These nearby countries may have benefited in the early stages of  
314 the pandemic due to their climate, whereas Iran has more ideal conditions for COVID-  
315 19 spread. Nevertheless, significant cases are expected in the coming months in warmer  
316 countries and cases originating in Iran could further exacerbate the spread of the pandemic  
317 within the broader region. Thus, Iran could become a regional reservoir and contribute to  
318 a second wave of epidemics in the Middle East.

## 319 **Supporting materials**

320 We enclosed a supplementary file to this paper.

## 321 **Acknowledgement**

322 The authors would like to thank Faramarz Faridi and Amirali Abbaspourmani for pro-  
323 viding us with valuable information from various news organisations regarding current  
324 developments and policy decisions relating to the COVID-19 outbreak in Iran. We also  
325 thank José Lourenço for helpful comments on the manuscript. MG and SD are funded  
326 by the Biotechnology and Biological Science Research Council (BBSRC), grant number  
327 BB/M011224/1.

Table 1: Model parameters

Parameter	Description	Expected value	Reference
$t_l$	Latency from infection to infectiousness	4 days	[Bi et al., 2020],[Nishiura et al., 2020]
$t_i$	Time to recover/falling severely ill	5 days	[Davies et al., 2020]
$t_h$	Time to recover/move to a critical state for a severe patient	8 days	[NHS, 2018-19]
$t_c$	Time to stabilise/die for a critical patient	10 days	[Cao et al., 2020]
$m_a$	Fraction of sub-clinical cases*	Table 2	[Imperial College COVID-19 Response Team, 2020b]
$c_a$	Fraction of severe cases that turn critical*	Table 2	[Imperial College COVID-19 Response Team, 2020b]
$f_a$	Fraction of critical cases that are fatal*	Table 2	—
$R_0$	Reproductive number	3.5 - 6.0	[Imperial College COVID-19 Response Team, 2020a]
$M(t)$	Mitigation measures at time $t$	Table 4	—

Table 2: Age-specific clinical information

Age-group (years)	Age group population size*	Percentage of subclinical cases ( $m_a$ )	Percentage requiring critical care ( $c_a$ )	Percentage dying while in critical care ( $f_a$ )
$\leq 9$	11,890,343	99.90%	5%	30%
10-19	12,278,478	99.70%	5%	30%
20-29	17,087,151	98.80%	5%	30%
30-39	12,542,942	96.80%	5%	30%
40-49	8,937,230	95.10%	6.30%	40%
50-59	6,207,527	89.80%	12.20%	40%
60-69	3,206,638	83.40%	27.40%	50%
70-79	2,033,499	75.70%	43.20%	50%
$\geq 80$	919,539	72.70%	70.90%	50%

Table 3: Weekly passenger flux to countries included in the study

Date	Country	Passenger/week	Cases Reported
24 Feb	Oman	2660	2
22 Feb	UAE	13430	3
25 Feb	Kuwait	4025	3
24 Feb	Iraq	16254	1
21 Feb	Lebanon	800	1
6 March	China	4500	28

Table 4: Timeline of public policies and mitigation strategies impacting the COVID-19 outbreak in Iran

Policies and main events	Description	Date effective
Social distancing encouraged	After the first few reported deaths, citizens are encouraged to avoid making unnecessary journeys and work from home. We assume this had an overall 20% impact on $M(t)$ .	20/02/2020 [BBC Persian, 2020a]
Elderly encouraged to stay home	The elderly and people with underlying conditions are recommended to reduce their social contacts. With a population of 6,159,676, we assume this had an overall 20% impact on $\zeta_a$ for age groups $> 60$ .	05/03/2020 [BBC Persian, 2020a]
School and university closure ordered	Nationwide school and university closure until further notice from the government. With a population of 41,255,972 aged under 30, we assume up to 50% effectiveness on $\zeta_a$ .	05/03/2020 [BBC Persian, 2020b]
New year's social and public events banned	During this period, social distancing was not strictly followed by citizens with reports of over 8.5 million travelling around the country during the 14-day holiday period. Nevertheless, since all shops and public gatherings were completely shut down, we assumed this had an extra 30% impact on mitigation measures $M(t)$ .	20/03/2020 [BBC Persian, 2020c]
Majority of workers back to work ('smart social distancing')	The government announced that the majority of workers must return to work while they must observe some level of social distancing. We have assumed that the re-opening results in up to 20% drop in effectiveness of mitigation measures $M(t)$ .	05/04/2020 [BBC Persian, 2020d]

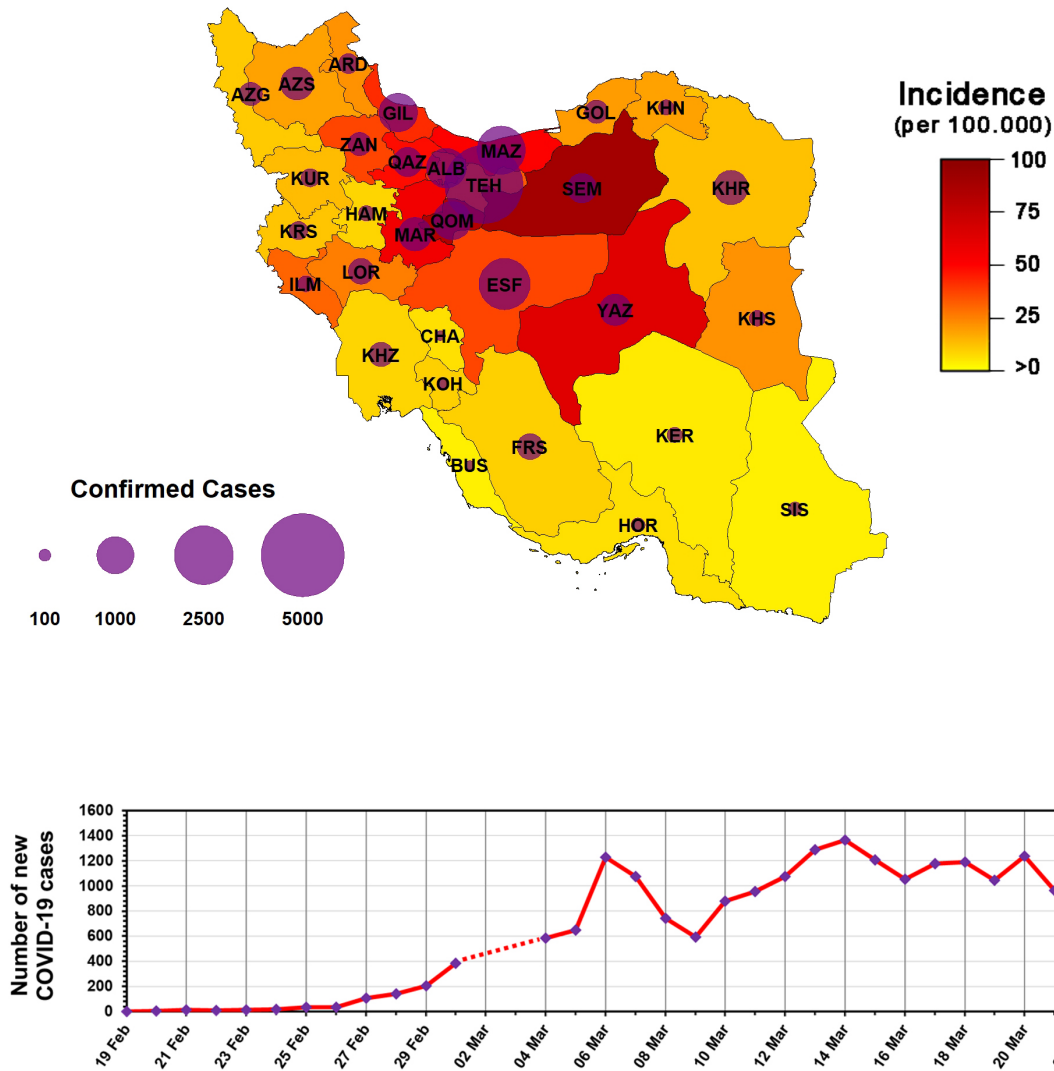


Figure 1: The COVID-19 Epidemic in Iran. (Top) Total incidence and confirmed cases by region, as of 22 March 2020. (Bottom) The early spread of the Iranian COVID-19 epidemic based on official reports. \*Dotted line illustrates when no cases were reported officially and is for visual purposes only

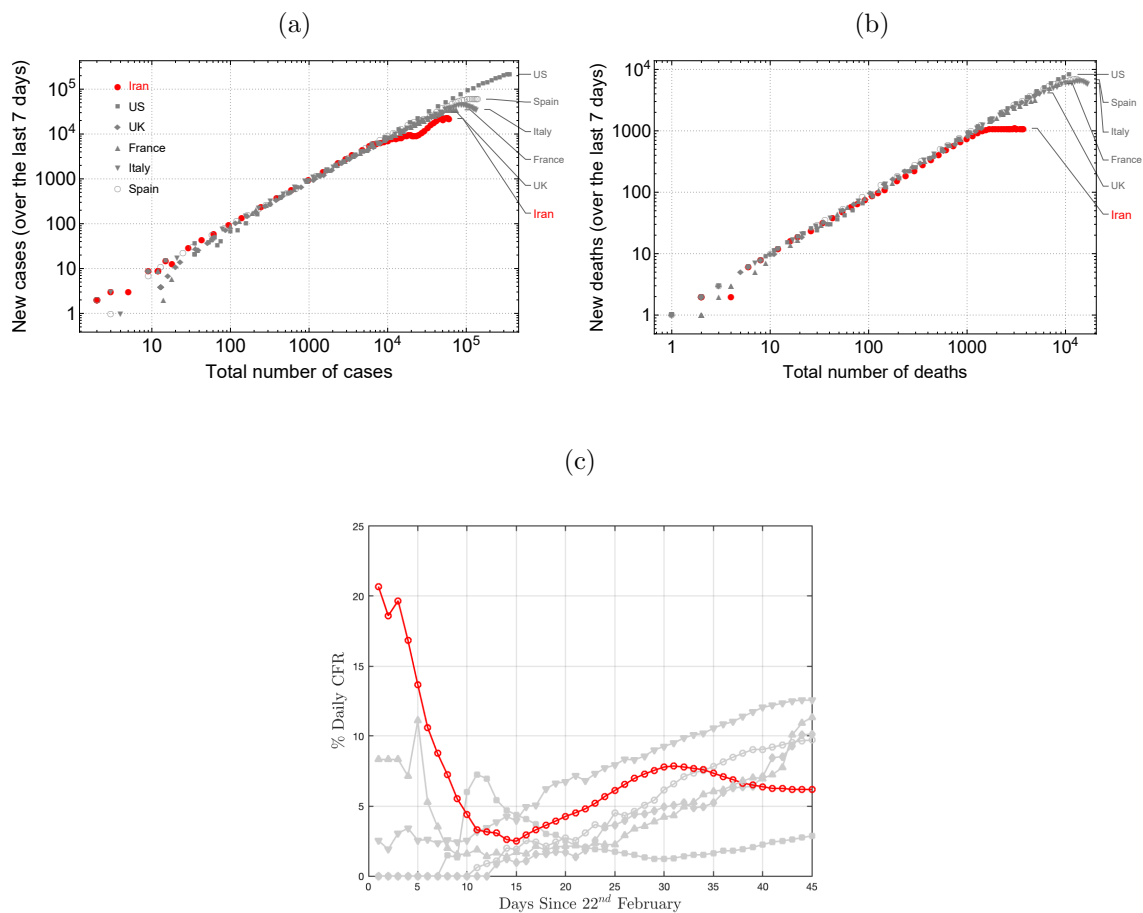


Figure 2: Reported number of cases and deaths from several countries including Iran (red). (a), (b) The sum of new cases/deaths over the last seven days since the announcement of reported numbers on that day as a function of the total number of cases/deaths to date. (c) The daily Case Fatality Ratio for all six countries since 22 February.

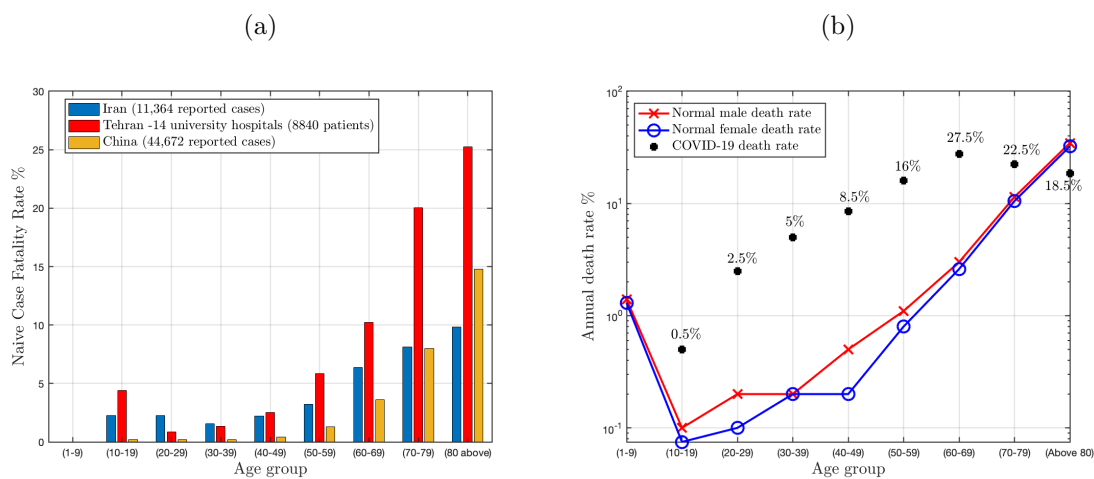


Figure 3: (a) Comparison of the age specific naïve Case Fatality Ratio reported by Iran’s Ministry of Health, Tehran University of Medical Sciences hospitals, and CDC China. (b) Probability of death due to COVID-19 compared to the annual death rate in males and females based on their age in Iran [WHO DEFINITION].

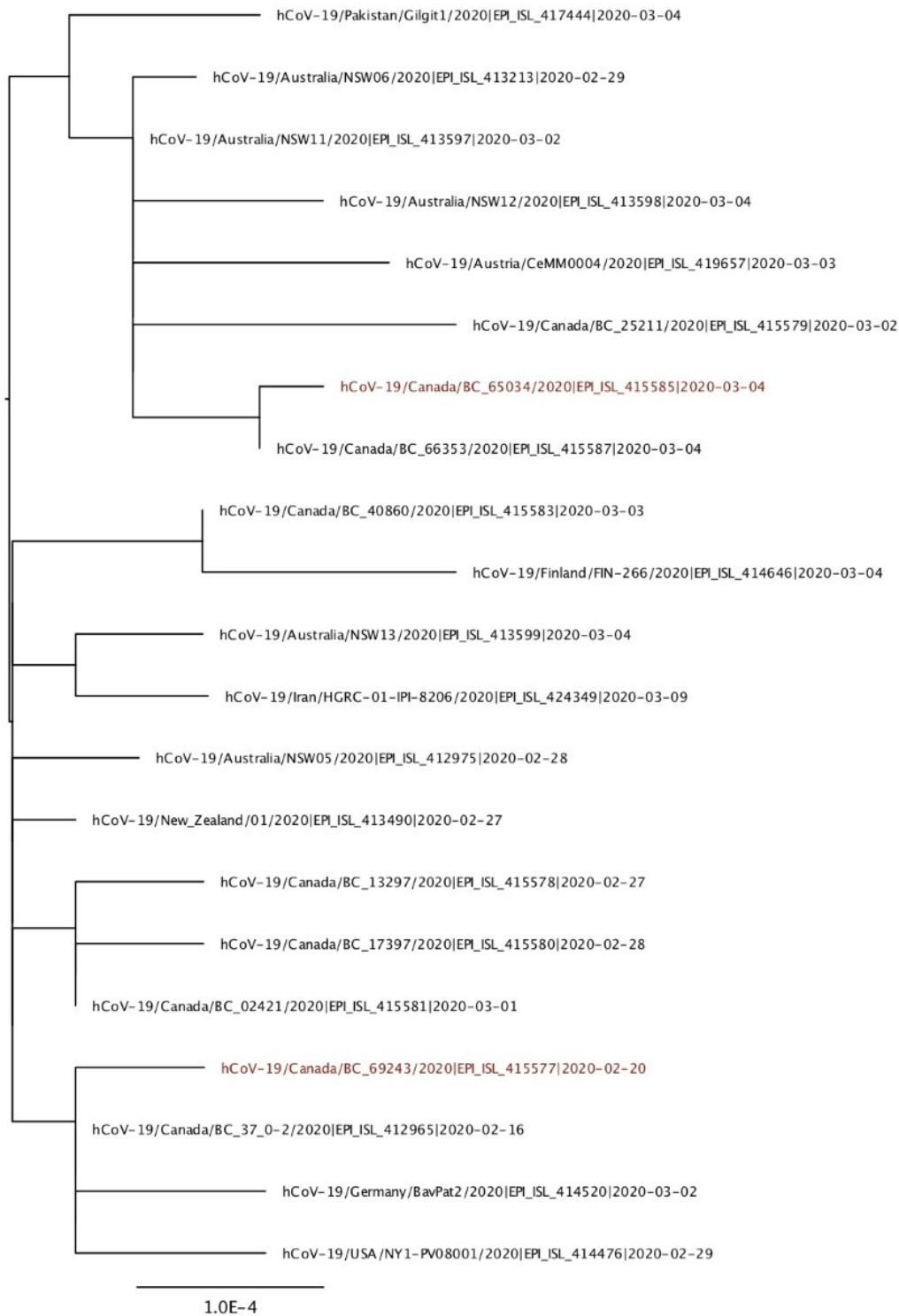


Figure 4: Maximum likelihood phylogenetic tree of samples linked to Iran. The labels include the sampling times used in the BEAST analysis. Red labels indicate the two epidemiologically linked samples that were excluded from the subsequent analysis.



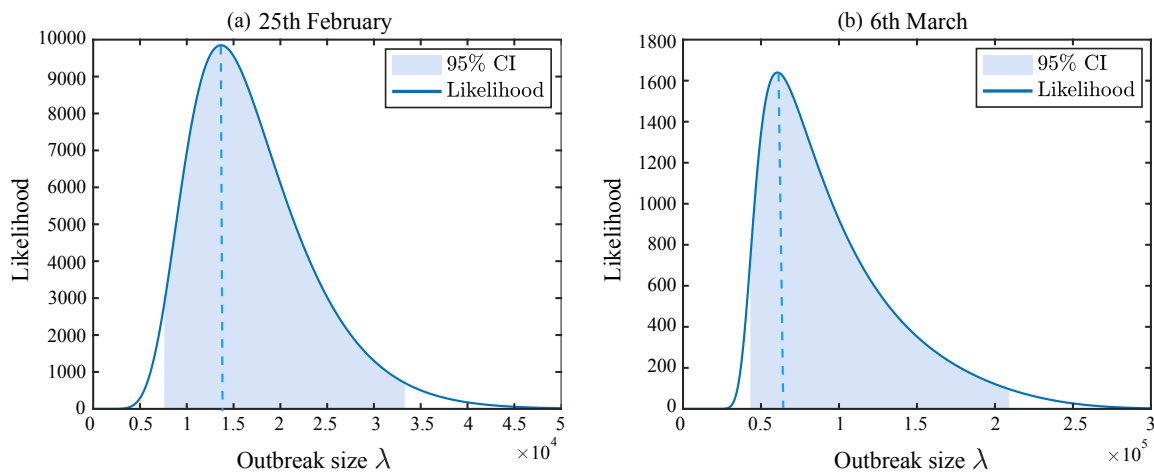


Figure 5: Likelihood function for (a) 6 exported cases to Oman, Lebanon, and Kuwait on 25 February and (b) 28 cases to China on 6 March. Red dashed line represents the maximum likelihood value and the gray area is the 95% confidence interval.

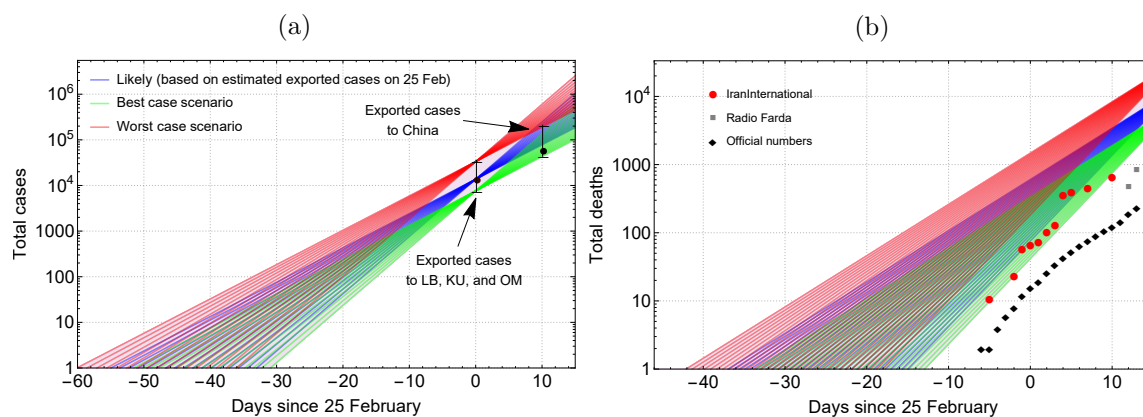


Figure 6: The likely (blue), worst case (red), and best case (green) scenario of the outbreak size in Iran (left) and total deaths since early January to 8 March. \*Full list of all reported cases and deaths from Iran International, Radio Farda, and other news organisations can be found in the Supplementary material.

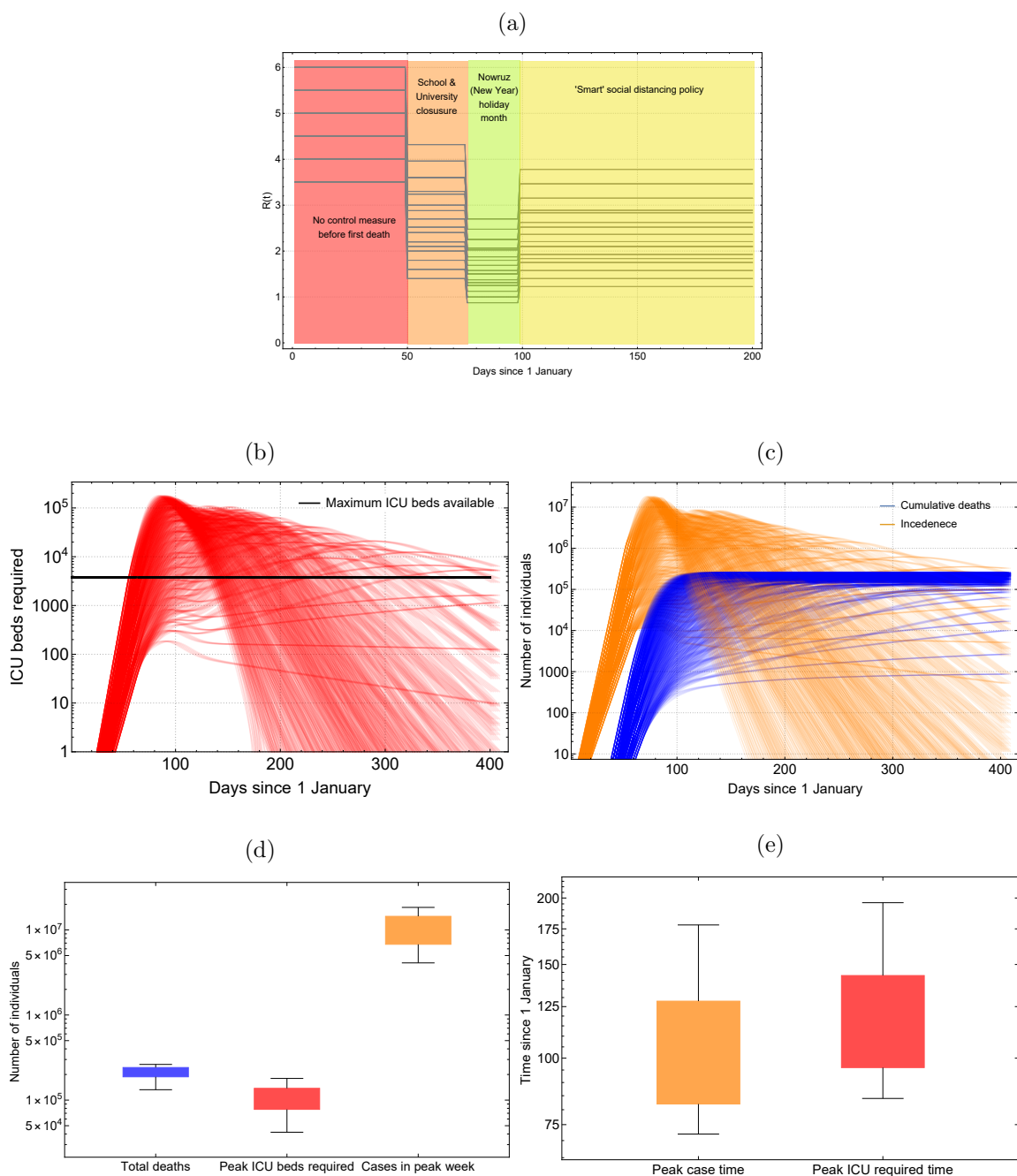


Figure 7: Projection of the impact of intervention measures on (a) effective reproduction number,  $R(t)$ , which we defined as the product of reproduction number,  $R_0$ , strength of mitigation measures,  $M(t)$ , and isolation of individuals in specific age-categories,  $\zeta_a$ , (b) number of ICU beds required (c) cumulative deaths and incidence over time. (d) and (e) show the summary of the analysis in total deaths, peak number of cases and ICU beds required, and the peak time since the seeding event for cases and ICU beds required times.

## 328 References

- 329 Y. Bai, L. Yao, T. Wei, F. Tian, D.-Y. Jin, L. Chen, and M. Wang. Presumed asymptomatic  
330 carrier transmission of COVID-19. *JAMA*, 323(14):1406–1407, 2020.
- 331 R. E. Baker, W. Yang, G. A. Vecchi, C. J. E. Metcalf, and B. T. Grenfell. Susceptible  
332 supply limits the role of climate in the covid-19 pandemic. *medRxiv*, 2020.
- 333 Z. Basravi. Iran to reopen businesses as COVID-19 lockdown eased. 2020.  
334 [https://www.aljazeera.com/news/2020/04/  
335 iran-reopen-businesses-covid-19-lockdown-eased-200417132846820.html](https://www.aljazeera.com/news/2020/04/iran-reopen-businesses-covid-19-lockdown-eased-200417132846820.html).
- 336 D. Baud, X. Qi, K. Nielsen-Saines, D. Musso, L. Pomar, and G. Favre. Real estimates of  
337 mortality following COVID-19 infection. *The Lancet Infectious Diseases*.
- 338 BBC Persian. People are asked not to leave their houses. 2020a.  
339 <https://www.bbc.com/persian/iran-51969772>.
- 340 BBC Persian. School closure. 2020b.  
341 <https://www.bbc.com/persian/iran-51761418>.
- 342 BBC Persian. 8.5 millions have gone on trips amid COVID-19 outbreak. 2020c.  
343 <https://www.bbc.com/persian/iran-51942853>.
- 344 BBC Persian. Majority of people return to work. 2020d.  
345 <https://www.bbc.com/persian/business-52219694>.
- 346 BBC Persian. At least 210 people have died with COVID-19. 2020e.  
347 <https://www.bbc.com/persian/iran-51676966>.
- 348 S. M. Bell, N. Müller, E. Hodcroft, C. W. adn James Hadfielda, M. Ilcisin, R. Neher,  
349 and T. Bedford. Genomic analysis of COVID-19 spread. Situation report 2020-03-27.  
350 *Nextstrain*, 2020.  
351 [https://nextstrain.org/narratives/ncov/sit-rep/2020-03-27?f\\_division\\_  
352 exposure=Iran&n=14](https://nextstrain.org/narratives/ncov/sit-rep/2020-03-27?f_division_exposure=Iran&n=14).
- 353 F. Benford. The law of anomalous numbers. *Proceedings of the American Philosophical  
354 Society*, 78(4):551–572, 1938.
- 355 Q. Bi, Y. Wu, S. Mei, C. Ye, X. Zou, Z. Zhang, X. Liu, L. Wei, S. A. Truelove, T. Zhang,  
356 W. Gao, C. Cheng, X. Tang, X. Wu, Y. Wu, B. Sun, S. Huang, Y. Sun, J. Zhang, T. Ma,  
357 J. Lessler, and T. Feng. Epidemiology and transmission of COVID-19 in Shenzhen China:  
358 analysis of 391 cases and 1,286 of their close contacts. *medRxiv*, 2020.

- 359 M. F. Boni, P. Lemey, X. Jiang, T. T.-Y. Lam, B. Perry, T. Castoe, A. Rambaut, and D. L.  
360 Robertson. Evolutionary origins of the SARS-CoV-2 sarbecovirus lineage responsible for  
361 the COVID-19 pandemic. *bioRxiv*, 2020.
- 362 R. J. C. Brown. Benford’s law and the screening of analytical data: the case of pollutant  
363 concentrations in ambient air. *The Analyst*, 130(9):1280—1285, 2005. doi: 10.1039/  
364 b504462f.
- 365 B. Cao, Y. Wang, D. Wen, W. Liu, J. Wang, G. Fan, L. Ruan, B. Song, Y. Cai, M. Wei,  
366 X. Li, J. Xia, N. Chen, J. Xiang, T. Yu, T. Bai, X. Xie, L. Zhang, C. Li, Y. Yuan,  
367 H. Chen, H. Li, H. Huang, S. Tu, F. Gong, Y. Liu, Y. Wei, C. Dong, F. Zhou, X. Gu,  
368 J. Xu, Z. Liu, Y. Zhang, H. Li, L. Shang, K. Wang, K. Li, X. Zhou, X. Dong, Z. Qu,  
369 S. Lu, X. Hu, S. Ruan, S. Luo, J. Wu, L. Peng, F. Cheng, L. Pan, J. Zou, C. Jia, J. Wang,  
370 X. Liu, S. Wang, X. Wu, Q. Ge, J. He, H. Zhan, F. Qiu, L. Guo, C. Huang, T. Jaki,  
371 F. G. Hayden, P. W. Horby, D. Zhang, and C. Wang. A trial of lopinavir–ritonavir in  
372 adults hospitalized with severe COVID-19. *New England Journal of Medicine*, 2020.
- 373 E. Crocetti and G. Randi. Using the Benford’s Law as a First Step to Assess the Quality  
374 of the Cancer Registry Data. *Frontiers in Public Health*, 4:225, 2016. ISSN 2296-2565.
- 375 N. G. Davies, A. J. Kucharski, R. M. Eggo, A. Gimma, , and W. J. Edmunds. The effect of  
376 non-pharmaceutical interventions on COVID-19 cases, deaths and demand for hospital  
377 services in the UK: a modelling study. *medRxiv*, 2020.
- 378 C. Durtschi, W. A. Hillison, and C. Pacini. The effective use of benford’s law to assist in  
379 detecting fraud in accounting data. 2004.
- 380 J.-S. Eden, R. Rockett, I. Carter, H. Rahman, J. de Ligt, J. Hadfield, M. Storey, X. Ren,  
381 R. Tulloch, K. Basile, J. Wells, R. Byun, N. Gilroy, M. V. O’Sullivan, V. Sintchenko,  
382 S. C. Chen, S. Maddocks, T. C. Sorrell, E. C. Holmes, D. E. Dwyer, J. Kok, and for  
383 the 2019-nCoV Study Group. An emergent clade of SARS-CoV-2 linked to returned  
384 travellers from Iran. *Virus Evolution*, 6(1), 2020.
- 385 Encyclopedia of Nations. Average length of stay of visitors - Tourism indicators - UNCTAD  
386 Handbook of Statistics - Country Comparison. *UNCTAD Handbook of Statistics*, 2003.  
387 [https://www.nationsencyclopedia.com/WorldStats/  
388 UNCTAD-average-length-stay-visitors.html](https://www.nationsencyclopedia.com/WorldStats/UNCTAD-average-length-stay-visitors.html).
- 389 L. Ferretti, C. Wymant, M. Kendall, L. Zhao, A. Nurtay, L. Abeler-Dörner, M. Parker,  
390 D. Bonsall, and C. Fraser. Quantifying SARS-CoV-2 transmission suggests epidemic  
391 control with digital contact tracing. *Science*, 2020.
- 392 G. F. Ficitola and D. Rubolini. Climate affects global patterns of COVID-19 early outbreak  
393 dynamics. *medRxiv*, 2020.

- 394 C. Fraser, C. A. Donnelly, S. Cauchemez, W. P. Hanage, M. D. Van Kerkhove, T. D.  
395 Hollingsworth, J. Griffin, R. F. Baggaley, H. E. Jenkins, E. J. Lyons, T. Jombart, W. R.  
396 Hinsley, N. C. Grassly, F. Balloux, A. C. Ghani, N. M. Ferguson, A. Rambaut, O. G.  
397 Pybus, H. Lopez-Gatell, C. M. Alpuche-Aranda, I. B. Chapela, E. P. Zavala, D. M. E.  
398 Guevara, F. Checchi, E. Garcia, S. Hugonnet, and C. Roth. Pandemic potential of a  
399 strain of influenza A (H1N1): early findings. *Science*, 324(5934):1557–1561, 2009.
- 400 W. Goodman. The promises and pitfalls of benford’s law. *Significance*, 13(3):38–41, 2016.
- 401 S. Guindon, J. Dufayard, V. Lefort, M. Anisimova, W. Hordijk, and O. Gascuel. New  
402 Algorithms and Methods to Estimate Maximum-Likelihood Phylogenies: Assessing the  
403 Performance of PhyML 3.0. *Systematic Biology*, 59(3), 2010.
- 404 E. Hodcroft, N. Müller, C. Wagner, M. Ilcisin, J. Hadfield, S. M. Bell, R. Neher, and T. Bed-  
405 ford. Genomic analysis of COVID-19 spread. Situation report 2020-03-13. *Nextstrain*,  
406 2020.  
407 <https://nextstrain.org/narratives/ncov/sit-rep/2020-03-13?n=6>.
- 408 A. J. Idrovo, J. A. Fernandez-Nino, I. Bojorquez-Chapela, and J. Moreno-Montoya. Per-  
409 formance of public health surveillance systems during the influenza A(H1N1) pandemic  
410 in the Americas: testing a new method based on Benford’s Law. *Epidemiology and*  
411 *Infection*, 139(12):1827–1834, 2011.
- 412 N. Imai, I. Dorigatti, A. Cori, C. Donnelly, S. Riley, and N. M. Ferguson. Estimating  
413 the potential total number of novel Coronavirus cases in Wuhan City, China. *Imperial*  
414 *College London COVID-19 Response Team*, 2020.
- 415 Imperial College COVID-19 Response Team. Estimating the number of infections and the  
416 impact of non- pharmaceutical interventions on COVID-19 in 11 European countries.  
417 2020a.
- 418 Imperial College COVID-19 Response Team. Impact of non-pharmaceutical interventions  
419 (NPIs) to reduce COVID- 19 mortality and healthcare demand. 2020b.
- 420 Iran International. Daily COVID-19 reports. 2020.  
421 <https://iranintl.com/en>.
- 422 M. U. G. Kraemer, C.-H. Yang, B. Gutierrez, C.-H. Wu, B. Klein, D. M. Pigott, ,  
423 L. du Plessis, N. R. Faria, R. Li, W. P. Hanage, J. S. Brownstein, M. Layan, A. Vespig-  
424 nani, H. Tian, C. Dye, O. G. Pybus, and S. V. Scarpino. The effect of human mobility  
425 and control measures on the COVID-19 epidemic in China. *Science*, 2020.
- 426 Q. Li, X. Guan, P. Wu, X. Wang, L. Zhou, Y. Tong, R. Ren, K. S. Leung, E. H. Lau, J. Y.  
427 Wong, X. Xing, N. Xiang, Y. Wu, C. Li, Q. Chen, D. Li, T. Liu, J. Zhao, M. Liu, W. Tu,

- 428 C. Chen, L. Jin, R. Yang, Q. Wang, S. Zhou, R. Wang, H. Liu, Y. Luo, Y. Liu, G. Shao,  
429 H. Li, Z. Tao, Y. Yang, Z. Deng, B. Liu, Z. Ma, Y. Zhang, G. Shi, T. T. Lam, J. T.  
430 Wu, G. F. Gao, B. J. Cowling, B. Yang, G. M. Leung, and Z. Feng. Early Transmission  
431 Dynamics in Wuhan, China, of Novel Coronavirus–Infected Pneumonia. *New England*  
432 *Journal of Medicine*, 382(13):1199–1207, 2020a.
- 433 R. Li, S. Pei, B. Chen, Y. Song, T. Zhang, W. Yang, and J. Shaman. Substantial undocu-  
434 mented infection facilitates the rapid dissemination of novel coronavirus (SARS-CoV2).  
435 *Science*, 2020b.
- 436 N. M. Linton, T. Kobayashi, Y. Yang, K. Hayashi, A. R. Akhmetzhanov, S.-m. Jung,  
437 B. Yuan, R. Kinoshita, and H. Nishiura. Incubation Period and Other Epidemiological  
438 Characteristics of 2019 Novel Coronavirus Infections with Right Truncation: A Statisti-  
439 cal Analysis of Publicly Available Case Data. *Journal of Clinical Medicine*, 9:538, Feb  
440 2020.
- 441 J. Lourenço, R. Paton, M. Ghafari, M. Kraemer, C. Thompson, P. Simmonds, P. Klener-  
442 man, and S. Gupta. Fundamental principles of epidemic spread highlight the immediate  
443 need for large-scale serological surveys to assess the stage of the sars-cov-2 epidemic.  
444 *medRxiv*, 2020.
- 445 J. Lu, L. d. Plessis, Z. Liu, V. Hill, M. Kang, H. Lin, J. Sun, S. Francois, M. U. G. Kraemer,  
446 N. R. Faria, J. T. McCrone, J. Peng, Q. Xiong, R. Yuan, L. Zeng, P. Zhou, C. Liang,  
447 L. Yi, J. Liu, J. Xiao, J. Hu, T. Liu, W. Ma, W. Li, J. Su, H. Zheng, B. Peng, S. Fang,  
448 W. Su, K. Li, R. Sun, R. Bai, X. Tang, M. Liang, J. Quick, T. Song, A. Rambaut,  
449 N. Loman, J. Raghwani, O. Pybus, and C. Ke. genomic epidemiology of sars-cov-2 in  
450 guangdong province, china.
- 451 R. Neher, I. Aksamentov, and N. Noll. About COVID-19 Scenarios. 2020.  
452 <https://covid19-scenarios.org/about>.
- 453 NHS. Hospital Admitted Patient Care Activity 2018-19. 2018-19.
- 454 H. Nishiura, N. M. Linton, and A. R. Akhmetzhanov. Serial interval of novel coron-  
455 avirus (COVID-19) infections. *International Journal of Infectious Diseases*, 93:284–286,  
456 2020/04/15 2020.
- 457 A. Notari. Temperature dependence of COVID-19 transmission. *medRxiv*, 2020.
- 458 J. Phua, M. O. Faruq, A. P. Kulkarni, I. S. Redjeki, K. Detleuxay, N. Mendsaikhan,  
459 K. K. Sann, B. R. Shrestha, M. Hashmi, J. E. M. Palo, R. Haniffa, C. Wang, S. M. R.  
460 Hashemian, A. Konkayev, M. B. Mat Nor, B. Patjanasontorn, K. M. K. Nafees, L. Ling,  
461 M. Nishimura, M. J. Al Bahrani, Y. M. Arabi, C.-M. Lim, W.-F. Fang, for the Asian  
462 Analysis of Bed Capacity in Critical Care (ABC) Study Investigators, and the Asian

- 463 Critical Care Clinical Trials Group. Critical care bed capacity in asian countries and  
464 regions. *Critical Care Medicine Society of Critical Care Medicine*, 48(5), 2020.
- 465 Radio Farda. Daily covid-19 reports. 2020a.  
466 <https://en.radiofarda.com>.
- 467 Radio Farda. WHO chief says 97 cases of coronavirus in 11 countries originated from Iran.  
468 2020b.  
469 <https://en.radiofarda.com/a/>.
- 470 A. Rambaut. Phylogenetic analysis of nCoV-2019 genomes. 2020.  
471 [http://virological.org/t/phylogenetic-analysis-176-genomes-6-mar-2020/](http://virological.org/t/phylogenetic-analysis-176-genomes-6-mar-2020/356)  
472 356  
473 [phylogenetic-analysis-176-genomes-6-mar-2020/356](http://virological.org/t/phylogenetic-analysis-176-genomes-6-mar-2020/356).
- 474 A. Rambaut, E. C. Holmes, and O. G. Pybus. A dynamic nomenclature for SARS-CoV-2  
475 to assist genomic epidemiology. 2020.  
476 [http://virological.org/t/](http://virological.org/t/a-dynamic-nomenclature-for-sars-cov-2-to-assist-genomic-epidemiology/458)  
477 [a-dynamic-nomenclature-for-sars-cov-2-to-assist-genomic-epidemiology/](http://virological.org/t/a-dynamic-nomenclature-for-sars-cov-2-to-assist-genomic-epidemiology/458)  
478 458.
- 479 Reality Check team. Coronavirus: Iran is facing a major challenge controlling the outbreak.  
480 2020.  
481 <https://www.bbc.co.uk/news/world-middle-east-51642926>.
- 482 Robin Wright. How Iran Became a New Epicenter of the Coronavirus Outbreak. *The New*  
483 *Yorker*, 2020.  
484 [https://www.newyorker.com/news/our-columnists/](https://www.newyorker.com/news/our-columnists/how-iran-became-a-new-epicenter-of-the-coronavirus-outbreak)  
485 [how-iran-became-a-new-epicenter-of-the-coronavirus-outbreak](https://www.newyorker.com/news/our-columnists/how-iran-became-a-new-epicenter-of-the-coronavirus-outbreak).
- 486 T. W. Russell, J. Hellewell, C. I. Jarvis, K. van Zandvoort, S. Abbott, R. Ratnayake,  
487 C. C.-. working group, S. Flasche, R. M. Eggo, W. J. Edmunds, and A. J. Kucharski.  
488 Estimating the infection and case fatality ratio for coronavirus disease (COVID-19) using  
489 age-adjusted data from the outbreak on the Diamond Princess cruise ship, February 2020.  
490 *Eurosurveillance*, 25(12):2000256, 2020.
- 491 M. M. Sajadi, P. Habibzadeh, A. Vintzileos, S. Shokouhi, F. Miralles-Wilhelm, and  
492 A. Amoroso. Temperature, Humidity and Latitude Analysis to Predict Potential Spread  
493 and Seasonality for COVID-19. 2020.
- 494 P. Sychalski, A. Błażyńska-Sychalska, and J. Kobiela. Estimating case fatality rates of  
495 COVID-19. *The Lancet Infectious Diseases*.

- 496 M. A. Suchard, P. Lemey, G. Baele, D. L. Ayres, A. J. Drummond, and A. Rambaut.  
497 Bayesian phylogenetic and phylodynamic data integration using BEAST 1.10. *Virus*  
498 *Evolution*, 4(1), 2018.
- 499 Tehran university school of medicine COVID-19 response team. Epidemiological report  
500 of COVID-19 in hospitals affiliated with Tehran university school of medicine. *Public*  
501 *Access Directory*, 2020.
- 502 The Islamic Republic News Agency(IRNA). COVID-19 fatalities age distribution. 2020.  
503 [www.irna.ir/news/83712959/](http://www.irna.ir/news/83712959/).
- 504 The Novel Coronavirus Pneumonia Emergency Response Epidemiology Team. The  
505 Epidemiological Characteristics of an Outbreak of 2019 Novel Coronavirus Diseases  
506 (COVID-19) — China, 2020. *China CDC Weekly*, 2:113, 2020.
- 507 N. Triggler. Coronavirus: How to understand the death toll. 2020.  
508 <https://www.bbc.com/news/health-51979654>.
- 509 A. R. Tuite, I. I. Bogoch, R. Sherbo, A. Watts, D. Fisman, and K. Khan. Estimation of  
510 coronavirus disease 2019 (COVID-19) burden and potential for international dissemina-  
511 tion of infection from Iran. *Annals of Internal Medicine*, 2020.
- 512 VariFlight. Flight database, 2020.
- 513 R. Verity, L. C. Okell, I. Dorigatti, P. Winskill, C. Whittaker, N. Imai, G. Cuomo-  
514 Dannenburg, H. Thompson, P. G. T. Walker, H. Fu, A. Dighe, J. T. Griffin, M. Baguelin,  
515 S. Bhatia, A. Boonyasiri, A. Cori, Z. Cucunubá, R. FitzJohn, K. Gaythorpe, W. Green,  
516 A. Hamlet, W. Hinsley, D. Laydon, G. Nedjati-Gilani, S. Riley, S. van Elsland, E. Volz,  
517 H. Wang, Y. Wang, X. Xi, C. A. Donnelly, A. C. Ghani, and N. M. Ferguson. Esti-  
518 mates of the severity of coronavirus disease 2019: a model-based analysis. *The Lancet*  
519 *Infectious Diseases*, 2020.
- 520 E. Volz, M. Baguelin, S. Bhatia, A. Boonyasiri, A. Cori, Z. Cucunuba Perez, G. Cuomo-  
521 Dannenburg, C. Donnelly, I. Dorigatti, R. Fitzjohn, H. Fu, K. Gaythorpe, A. Ghani,  
522 A. Hamlet, W. Hinsley, N. Imai, D. Laydon, G. Nedjati Gilani, L. Okell, S. Riley,  
523 S. Van Elsland, H. Wang, Y. Wang, X. Xi, and N. Ferguson. Phylogenetic analysis of  
524 SARS-CoV-2. 2020.
- 525 P. Wintour. Iran’s president has left nation open to second Covid-19 wave. 2020.  
526 [https://www.theguardian.com/world/2020/apr/13/](https://www.theguardian.com/world/2020/apr/13/irans-president-has-left-nation-open-to-second-covid-19-wave-critics)  
527 [irans-president-has-left-nation-open-to-second-covid-19-wave-critics](https://www.theguardian.com/world/2020/apr/13/irans-president-has-left-nation-open-to-second-covid-19-wave-critics).
- 528 World Tourism Organisation. Iran Islamic Republic Of Country-specific Basic indicators  
529 (Compendium) 2014 - 2018 (12.2019). *Tourism Statistics*, 2020.



- 530 J. T. Wu, K. Leung, M. Bushman, N. Kishore, R. Niehus, P. M. de Salazar, B. J. Cowling,  
531 M. Lipsitch, and G. M. Leung. Estimating clinical severity of COVID-19 from the  
532 transmission dynamics in Wuhan, China. *Nature Medicine*, 26(4):506–510, 2020.
- 533 Z. Zhuang, S. Zhao, Q. Lin, P. Cao, Y. Lou, L. Yang, and D. He. Preliminary estimation  
534 of the novel coronavirus disease (COVID-19) cases in Iran: A modelling analysis based  
535 on overseas cases and air travel data. *International Journal of Infectious Diseases*, 2020.

## 536 **Appendix A: Investigating manipulation of reported numbers** 537 **using Benford's law**

538 Benford's law (BL) gives the probability distribution of leading digits in a determined set  
539 of numbers [Benford, 1938]. The probability that digit  $d = 1, 2, \dots, 9$  is a leading number  
540 is given by  $P(d) = \log_{10}(1 + (1/d))$  where numbers with leading digit 1 have the highest  
541 probability of appearance and this probability steadily decreases as the starting digit be-  
542 comes larger. Benford's law is used in a variety of different areas to study irregularities in  
543 data [Brown, 2005, Durtschi et al., 2004] and is also frequently used in medicine to assess  
544 the quality of data [Crocetti and Randi, 2016, Idrovo et al., 2011].

545 Figure 8a shows the distribution of leading digits in data acquired from Iran, the USA,  
546 and the UK compared to the Benford distribution. The observed data in Iran is the cases  
547 reported by each province from 18/02/2020 to 20/03/2020. We find numbers that are  
548 larger than 9 in the data to take out any bias that may come into the distribution from  
549 single digit numbers. We find a total of 397 numbers larger than 9 from which we then  
550 sample 300 random numbers 8 times to generate an average distribution with error bars  
551 representing the standard deviation. Similarly, we find 19494 numbers larger than 9 from  
552 the data of US states from 22/01/2020 to 11/04/2020 and 619 numbers from the data  
553 of English provinces from 09/03/2020 to 11/04/2020. We sample the numbers obtained  
554 from the US and the UK in a similar way. We then normalise the frequency distribution  
555 by the sample size of 300 to obtain the probability distribution shown in Fig. 8a. The  
556 probability distribution does not show any conclusive evidence to suggest a manipulation  
557 of data in any of the three countries. The low or inaccurate number of reported cases in Iran  
558 are therefore likely due to limitations in testing and failure to detect infected individuals.  
559 While this method can be used to test if data manipulation has occurred it does not give  
560 any information about the deliberate absence of data, for example not reporting deaths  
561 from specific hospitals [Goodman, 2016].

562 Figure 8b shows the distribution of leading numbers for the total daily reported deaths  
563 across the whole country for Iran, the US, and the UK until 11/04/2020. There are a total  
564 of 42 reported numbers larger than 9 in Iran, 28 in the US, and 29 in the UK. We randomly  
565 sample a section of numbers larger than 9 equal to the smallest available data which is 28  
566 numbers larger than 9 from the US. The frequency distribution of the leading number is  
567 then normalised by 28 to obtain a probability distribution. There are no error bars since  
568 the available data is small and sampling was only done once. The daily reported number  
569 of deaths in the entire country is perhaps not a reliable statistic to study for comparison  
570 to Benford's law since the available data is too small. But since Iran does not report  
571 deaths for individual provinces and cities, the total number of daily deaths in the country  
572 is the only statistic available of deaths due to COVID-19 from Iran and the only means  
573 of comparison to data from other countries. We still observe a significant distribution of  
574 numbers leading with 1 which can be an explanation for Fig. 2c and why Iran has a fatality

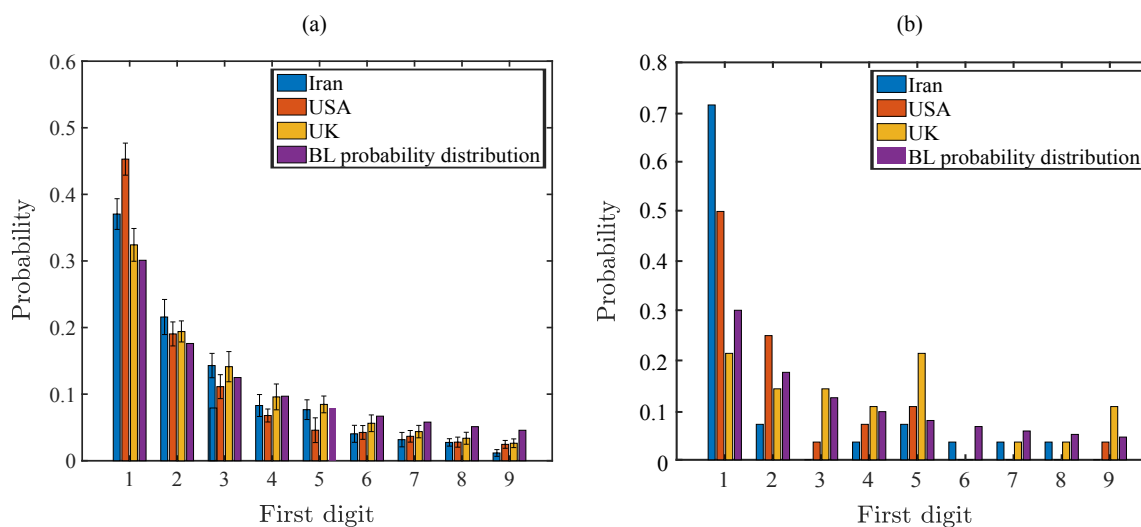


Figure 8: The probability distribution of leading digits (a) in daily reported cases of infected individuals and (b) in daily reported deaths due to COVID-19. The data from provinces in Iran, states in the US, and counties in the UK are compared to the distribution predicted by Benford's law.

575 rate that is almost constant from 40 days after Feb 22. This can mean that the constant  
576 death rate is due to reported deaths that all lead with the number 1 which may be an  
577 indication of the under-reporting of deaths due to COVID-19 since we would expect the  
578 death rate to gradually increase from what we observe in other countries.

## 579 Appendix B: Air travel analysis

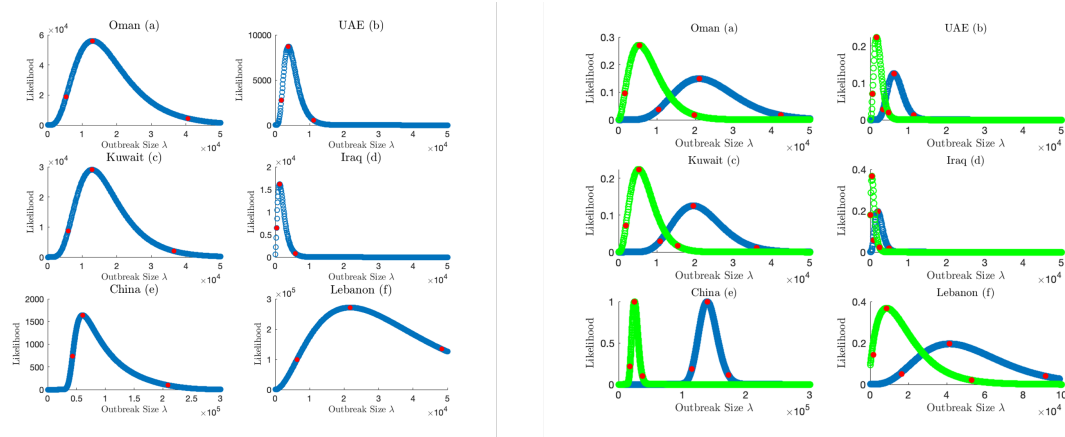


Figure 9: Likelihood estimation of outbreak size in Iran based on travel data from Oman, UAE, Kuwait, Iraq, and Lebanon on 25 February and China on 6 March. (Left) Beta-binomial likelihood analysis of outbreak size for each country assuming 50% detection. (Right) Binomial likelihood analysis for each country assuming 100% detection (green) and 50% detection (blue). Red dots represent the maximum likelihood and 95% confidence interval.