

## Coronavirus Disease (COVID-19) Pandemic: An Overview of Systematic Reviews

Israel Júnior Borges do Nascimento, Clinical Pathologist (ClinPath)<sup>1,2</sup>, Dónal P. O'Mathúna, PhD<sup>3,4</sup>, Thilo Caspar von Groote, MD<sup>5</sup>, Hebatullah Mohamed Abdulazeem, MD<sup>6</sup>, Ishanka Weerasekara, MD<sup>7,8</sup>, Ana Marusic, MD, PhD.<sup>9</sup>, Livia Puljak, MD, PhD<sup>10\*</sup>, Vinicius Tassoni Civile, PhD<sup>11</sup>, Irena Zakarija-Grkovic, MD, PhD<sup>9</sup>, Tina Poklepovic Pericic, DMD, PhD<sup>9</sup>, Alvaro Nagib Atallah, MD, PhD<sup>11</sup>, Santino Filoso, PhD<sup>12</sup>, Nicola Luigi Bragazzi<sup>13</sup>, Milena Soriano Marcolino, MD, PhD<sup>1</sup>,  
On behalf of the International Network of Coronavirus Disease 2019 (InterNetCOVID-19)

### Affiliations:

1. University Hospital and School of Medicine, Universidade Federal de Minas Gerais, Belo Horizonte, Minas Gerais, Brazil; e-mail: [israeljbn@ufmg.br](mailto:israeljbn@ufmg.br); [milenamarc@gmail.com](mailto:milenamarc@gmail.com)
2. Medical College of Wisconsin, Milwaukee, Wisconsin, United States of America.
3. Helene Fuld Health Trust National Institute for Evidence-based Practice in Nursing and Healthcare, College of Nursing, The Ohio State University, Columbus, Ohio, United States of America; [omathuna.6@osu.edu](mailto:omathuna.6@osu.edu)
4. School of Nursing, Psychotherapy and Community Health, Dublin City University, Dublin, Ireland.
5. Department of Anesthesiology, Intensive Care and Pain Medicine, University of Münster, Münster, Germany; [thilo.vongroote@gmail.com](mailto:thilo.vongroote@gmail.com)
6. Department of Sport and Health Science, Technische Universität München, Munich, Germany; [dr.hebatullah.mohamed@gmail.com](mailto:dr.hebatullah.mohamed@gmail.com)
7. School of Health Sciences, Faculty of Health and Medicine, The University of Newcastle, Callaghan, Australia; [Ishanka.Weerasekara@uon.edu.au](mailto:Ishanka.Weerasekara@uon.edu.au)
8. Department of Physiotherapy, Faculty of Allied Health Sciences, University of Peradeniya, Peradeniya, Sri Lanka.
9. Cochrane Croatia, University of Split, School of Medicine, Split, Croatia; [ana.marusic@mefst.hr](mailto:ana.marusic@mefst.hr), [tinapoklepovic@gmail.com](mailto:tinapoklepovic@gmail.com), [izakarijagrkovic@yahoo.com](mailto:izakarijagrkovic@yahoo.com)
10. Center for Evidence-Based Medicine and Health Care, Catholic University of Croatia, Zagreb, Croatia; [livia.puljak@unicath.hr](mailto:livia.puljak@unicath.hr)
11. Cochrane Brazil; Evidence-Based Health Program, Universidade Federal de São Paulo, São Paulo, Brazil; [vinicius\\_civile@yahoo.com.br](mailto:vinicius_civile@yahoo.com.br); [alvaro.atallah@gmail.com](mailto:alvaro.atallah@gmail.com)
12. Yorkville University, Fredericton, New Brunswick, Canada; [santino\\_filoso@hotmail.com](mailto:santino_filoso@hotmail.com)
13. Laboratory for Industrial and Applied Mathematics (LIAM), Department of Mathematics and Statistics, York University, Toronto, Ontario, Canada; [robertobragazzi@gmail.com](mailto:robertobragazzi@gmail.com)

\*Corresponding author:

Israel Júnior Borges do Nascimento, ClinPath

University Hospital and School of Medicine

Universidade Federal de Minas Gerais

Phone: + 1 860 869 7285 or + 55 31 99744 0897

E-mail: [israeljbn@ufmg.br](mailto:israeljbn@ufmg.br) or [israeljrbn@gmail.com](mailto:israeljrbn@gmail.com)

ORCID: 0000-0001-5240-0493

## **Abstract**

**Background:** Navigating the rapidly growing body of scientific literature on the SARS-CoV-2 pandemic is challenging and ongoing critical appraisal of this output is essential. We aimed to collate and summarize all published systematic reviews on the coronavirus disease (COVID-19).

**Methods:** Nine databases (Medline, EMBASE, Cochrane Library, CINAHL, Web of Sciences, PDQ-Evidence, WHO's Global Research, LILACS and Epistemonikos) were searched from December 1, 2019 to March 24, 2020. Systematic reviews analyzing primary studies of COVID-19 were included. Two authors independently undertook screening, selection, extraction (data on clinical symptoms, prevalence, pharmacological and non-pharmacological interventions, diagnostic test assessment, laboratory and radiological findings) and quality assessment (AMSTAR 2). Meta-analysis on prevalence of clinical outcomes was performed.

**Results:** Eighteen systematic reviews were included; one was empty. Using AMSTAR 2, confidence in the results of 13 reviews was rated as “critically low”, one as “low”, one as “moderate” and two as “high”. Symptoms of COVID-19 were (range values of point estimates): fever (82–95%), cough with or without sputum (58–72%), dyspnea (26–59%), myalgia or muscle fatigue (29–51%), sore throat (10–13%), headache (8–12%) and gastrointestinal complaints (5–9%). Severe symptoms were more common in men. Elevated C-reactive protein (associated with lymphocytopenia) and lactate dehydrogenase, and slightly elevated aspartate and alanine aminotransferase, were commonly described. Thrombocytopenia and elevated levels of procalcitonin and cardiac troponin I were associated with severe disease. Chest imaging described a frequent pattern of uni- or bilateral multilobar ground-glass opacity. Only one review investigated the impact of medication (chloroquine) but found no verifiable clinical data. All-cause mortality ranged from 0.3% to 14%.

**Conclusions:** Confidence in the results of most reviews was “critically low”. Future studies and systematic reviews should adhere to established methodologies. The majority of included systematic reviews were hampered by imprecise search strategy and no previous protocol submission.

**Protocol registration:** This is an extension of a PROSPERO protocol (CRD42020170623); protocol available on Open Science Framework (<https://osf.io/6xtyw>).

**Keywords:** Coronavirus; COVID-19; SARS-Cov-2; Evidence-based Medicine; Infectious Diseases

## **1. Background**

Spread of severe acute respiratory coronavirus 2 (SARS-CoV-2), the causal agent of COVID-19, has been characterized as a pandemic by the World Health Organization (WHO) and has triggered an international public health emergency [1]. The virus is easily transmitted through person-to-person contact and virus contamination of surfaces or objects [2,3]. As of April 7, 2020, more than 1,359,398 people have been confirmed to be infected with the virus and over 75,945 people have died as a result of severe complications of the disease [4]. These numbers are likely to be underestimates, as countries are unable to test all patients suspected of having the disease due to worldwide shortages of testing reagents [5]. Estimates put the economic impact of COVID-19 as surpassing trillions of dollars when global trade, travel and business costs are added to healthcare and public health expenses [6,7].

Given the novelty of the situation and dozens of daily publications in peer reviewed journals and preprints, there is an overwhelming avalanche of information from research articles to sift through. For healthcare professionals and government policy makers, the ability to sort through relevant research results, in order to clearly identify the most up-to-date and reliable information, is essential. Having filtered, accurate information at their disposal allows stakeholders to make timely decisions regarding the best course of action. Hence, our aim was to summarize the data from all available systematic reviews regarding COVID-19 in humans and to rigorously assess the level of confidence that we can have in this evidence.

## 2. Methodology

### 2.1. Protocol and Registration

This overview is a systematic review of systematic reviews. It is an extension of a recently submitted PROSPERO protocol (CRD42020170623) [8]. The protocol has also been published on Open Science Framework (OSF) (<https://osf.io/6xtyw>) for transparency. It was conducted in accordance with the Preferred Reporting Items for Systematic Reviews and Meta-Analyses (PRISMA) statement [9]. The methodology used in this review was adapted from the *Cochrane Handbook for Systematic Reviews of Interventions* and also followed established methodological considerations for analyzing existing systematic reviews [10,11].

### 2.2. Ethics

Approval of a research ethics committee was not necessary as the study analyzed only publicly available articles.

### 2.3. Eligibility Criteria

Systematic reviews were included if they analyzed primary data from patients infected with SARS-CoV-2 as confirmed by RT-PCR or another pre-specified diagnostic technique. Eligible reviews covered all topics related to COVID-19, including, but not limited to those that reported clinical symptoms, diagnostic methods, therapeutic interventions, laboratory findings or radiological results. Both full manuscripts and abbreviated versions, such as letters, were eligible.

No restrictions were imposed on the design of the primary studies included within the systematic reviews, date of last search, whether or not the review included meta-analyses, or language. A systematic review was defined as a publication where: I. the search was conducted in at least two databases (at least one being electronic); and II. detailed description of the methods with explicit inclusion criteria was provided. We excluded narrative reviews as these are less likely to be replicable and are more prone to bias.

#### *2.4. Information Sources*

Nine databases were searched for eligible records published between December 1 2019 and March 24, 2020: Cochrane Database of Systematic Reviews via Cochrane Library, PubMed EMBASE, CINAHL (Cumulative Index to Nursing and Allied Health Literature), Web of Sciences, LILACS (Latin American and Caribbean Health Sciences Literature), PDQ-Evidence, WHO's Global Research on Coronavirus Disease (COVID-19), and Epistemonikos.

#### *2.5. Search*

The comprehensive search strategy for each database is provided in Appendix 1 and was designed and conducted in collaboration with an information specialist. All retrieved records were primarily processed in EndNote, where duplicates were removed, and records were then imported on Covidence Platform [12]. In addition to database searches, we screened reference lists of reviews included, after screening records retrieved via databases.

#### *2.6. Study Selection*

All searches, screening of titles and abstracts, as well as record selection, were performed independently by two investigators using the Covidence Platform [12]. Articles deemed potentially eligible were retrieved for full-text screening by two independent investigators. Discrepancies in both stages of screening were resolved by consensus. During screening, records published in languages other than English were translated by a native/fluent speaker.

#### *2.7. Data Collection Process*

We custom designed a data extraction table for the purpose of this study, which was piloted by two authors independently. Data extraction was performed independently by two authors. Conflicts were resolved by consensus or by consulting a third researcher.

## 2.8. Data Items

We extracted the following data: article identification data (authors' name and journal of publication), range of period associated with the search, number of databases searched, population or settings considered, main results and outcomes observed, and number of participants. From Web of Science (Clarivate Analytics, Philadelphia, PA, USA) we extracted journal rank (quartile) and Journal Impact Factor (JIF).

We categorized the following as primary outcomes: all-cause mortality, need for and length of mechanical ventilation, length of hospitalization (in days), admission to intensive care unit (yes/no) and length of stay in intensive care unit.

The following were categorized as exploratory outcomes: diagnostic methods used for detection of the virus, male to female ratio, clinical symptoms, pharmacological and non-pharmacological interventions, laboratory findings (full blood count, liver enzymes, C-reactive protein, d-dimer, albumin, lipid profile, serum electrolytes, blood vitamin levels, glucose levels, and any other important biomarkers), and radiological findings (using radiography, computed tomography, magnetic resonance imaging or ultrasound).

We also collected data on reporting guidelines and requirements for publication of systematic reviews and meta-analyses from journal websites where included reviews were published

## 2.9. Quality Assessment in Individual Reviews

Two researchers independently assessed the quality of the reviews using the “A MeaSurement Tool to Assess systematic Reviews 2 (AMSTAR 2)”, designed to assess systematic reviews that include both randomized and non-randomized studies. Adherence to each item was rated as follows: yes, no, partial yes, not applicable or unclear. We rated overall confidence in the results of the review as “critically low”, “low”, “moderate” or “high”, according to the AMSTAR 2 guidance based on seven critical domains defined by AMSTAR 2 authors [13]. If a review did not find any studies to include (i.e., it was an “empty review”), we scored each individual item, but we did not conduct summary confidence assessment for such reviews.



One of the included systematic reviews was conducted by some members of this author team. To prevent risk of bias in assessing methodological quality of this particular review, it was assessed independently by two authors who did not co-author it.

### *2.10. Synthesis of Results*

For data synthesis, we prepared a table summarizing each systematic review. Graphics illustrating mortality rate and clinical symptoms were created. We then prepared a narrative summary of the methods, findings, study strengths and limitations.

For analysis of prevalence of clinical outcomes, we extracted data on the number of events and total number of patients to perform proportional meta-analysis using RStudio<sup>®</sup> software, with the “meta” package (version 4.9-6), using the “metaprop” function for reviews that did not perform meta-analysis, excluding case studies because of the absence of variance. For reviews that did not perform meta-analysis, we presented pooled results of proportions with their respective confidence intervals (95%) by the inverse variance method with a random-effects model, using the DerSimonian-Laird estimator for  $\tau^2$ . We adjusted data using Freeman-Tukey double arcsin transformation. Confidence intervals were calculated using the Clopper-Pearson method for individual studies. Forest plots were generated showing data from individual systematic reviews, but results were not pooled because some studies were included in multiple reviews. We developed the using RStudio<sup>®</sup> software, with the “metafor” package (version 2.1-0) and “forest” function.

### 3. Results

Our search retrieved 1,063 publications, of which 175 were duplicates. Most publications were discarded after title and abstract analysis ( $n = 860$ ), 28 were selected for full text screening and 18 were included in the final analysis (Figure 1) [14-31]. Reference list screening did not retrieve any additional systematic reviews.

#### 3.1. Characteristics of included reviews

Summary features of the 18 systematic reviews are presented in Table S1. Included reviews were published in 14 different journals. Only four of these journals had specific requirements for submission of systematic reviews (with or without meta-analysis): *European Journal of Internal Medicine*, *Journal of Clinical Medicine*, *Ultrasound in Obstetrics and Gynecology* and *Clinical Research in Cardiology*. Two journals reported that they published only invited reviews (*Journal of Medical Virology* and *Clinica Chimica Acta*). Three reviews were published as a letter, and one was labelled as a rapid review (Table S2).

All the reviews were published in English in a first quartile (Q1) journal, with JIF (Journal Impact Factor) ranging from 1.692 to 6.062. The 18 systematic reviews covered more than 120 individual primary studies, involving in total at least 60,000 participants. Ten systematic reviews included meta-analyses. Primary studies included in the reviews were published between December 2019 and March 18, 2020, and comprised case reports, case series, cohorts and other observational studies. We did not find any review with randomized clinical trials. In these reviews, systematic literature searches were performed from 2019 (entire year) up to March 9, 2020.

#### 3.2. Population and study designs

Most of the reviews analyzed data from patients with COVID-19 who developed pneumonia, acute respiratory distress syndrome (ARDS) or any other correlated complication. Two reviews were based on *in vitro* investigations, one review aimed to evaluate the effectiveness of using surgical masks on preventing transmission of the virus [25], one review was focused on pediatric patients [23] and one review

investigated COVID-19 in pregnant women (Figure 1) [26]. Most reviews assessed clinical symptoms, laboratory findings or radiological results.

### *3.3. Systematic review findings*

The summary of findings from individual reviews is shown in Table S2. Overall, all-cause mortality ranged from 0.3% to 14% (Figure 2).

#### *3.3.1. Clinical symptoms*

Seven reviews described the main clinical manifestations of COVID-19 [14,15,22,23,24,28,30]. Three of them provided only a narrative discussion of symptoms [14,23,24]. Four reviews performed a statistical analysis of the incidence of different clinical symptoms. Overall, symptoms in patients with COVID-19 were (range values of the point estimates): fever (82–95%), cough with or without sputum (58–72%), dyspnea (26–59%), myalgia or muscle fatigue (29–51%), sore throat (10–13%), headache (8–12%), gastrointestinal disorders, such as diarrhea, nausea or vomiting (5.0–9.0%), and others (including, in one study only: dizziness 12.1%) (Figure 3-9). Three reviews assessed cough with and without sputum together; only one review assessed sputum production itself (28.5%).

#### *3.3.2. Diagnostic aspects*

Three reviews described methodologies, protocols and tools used for establishing the diagnosis of COVID-19 [14,23,27]. Use of respiratory swabs (nasal or pharyngeal) or blood specimens to assess the presence of SARS-CoV-2 nucleic acid using RT-PCR assays was the most commonly used diagnostic methods mentioned in the included studies. These diagnostic tests are widely used, but their precise sensitivity and specificity remain unknown. One review included a Chinese study in which there was clinical diagnosis with no confirmation of SARS-CoV-2 infection (patients were diagnosed with COVID-19 if they presented with at least 2 symptoms suggestive of COVID-19, as well as laboratory and chest radiography abnormalities) [23].

### *3.3.3 Therapeutic possibilities*

Pharmacological and non-pharmacological interventions (supportive therapies) used in the treatment of patients with COVID-19 were reported in five reviews [16,17,23,24,27]. Most reviews were descriptive, as the original studies did not assess the impact of therapies. Antivirals have been used empirically for COVID-19 treatment with the most commonly used being protease inhibitors (lopinavir, ritonavir, darunavir), nucleoside reverse transcriptase inhibitor (tenofovir), nucleotide analog (remdesivir, galidesivir, ganciclovir), and neuraminidase inhibitors (oseltamivir). Umifenovir, a membrane fusion inhibitor, was investigated in several studies [16,24]. Possible supportive interventions analyzed were different types of oxygen supplementation and breathing support (invasive or non-invasive ventilation). Use of antibiotics, both empirically and to treat secondary pneumonia, was reported in some studies. One review specifically assessed evidence on the efficacy and safety of the anti-malaria drug chloroquine [17]. It identified 23 ongoing trials investigating the potential of chloroquine as a therapeutic option for COVID-19, but no verifiable clinical outcomes data. Use of mesenchymal stem cells, antifungals and glucocorticoids were seldom described.

### *3.3.4 Laboratory and radiological findings*

Of the 18 reviews included in this overview, eight analyzed laboratory parameters in patients with COVID-19 [16,19-24,28]. Elevated C-reactive protein levels, associated with lymphocytopenia, elevated lactate dehydrogenase, as well as slightly elevated aspartate and alanine aminotransferase (AST, ALT) were commonly described. Lippi et al. assessed the variation of cardiac troponin I (cTnI), procalcitonin, and platelet count between severe COVID-19 patients and non-severe COVID-19 patients [19-21]. Elevated levels of procalcitonin and cTnI were more likely to be associated with a severe disease course (requiring intensive care unit admission and intubation). Furthermore, thrombocytopenia was frequently observed in patients with complicated COVID-19 infections.

Chest imaging (chest radiography and/or computed tomography) features were assessed in six reviews, all of which described a frequent pattern of local or bilateral multilobar ground-glass opacity [16,23,24,28-30]. Septal thickening, bronchiectasis, pleural and

cardiac effusions, halo signs and pneumothorax were observed in patients suffering from COVID-19.

### *3.4 Quality of evidence in individual systematic reviews*

Table S3 shows the detailed results of the quality assessment of 18 systematic reviews, including assessment of individual items and summary assessment. Overall confidence in results of reviews was assessed for 17 reviews; for one empty review summary assessment was not made [25]. Using AMSTAR 2 criteria, confidence in the results of 13 out of 17 reviews with included studies was rated as “critically low”, one as “low”, one as “moderate” and two as “high”. Common methodological drawbacks were: omission of prospective protocol submission or publication; use of inappropriate search strategy; lack of independent and dual literature screening and data-extraction (or methodology unclear); absence of explanation for heterogeneity among the studies included; lack of reasons for study exclusion (or rationale unclear).

Risk of bias assessment, based on a clearly reported methodological tool, and quality of evidence appraisal, in line with the Grading of Recommendations Assessment, Development and Evaluation (GRADE) method, were reported only in one review.<sup>16</sup> Systematic reviews should perform a risk of bias assessment of included primary studies, but only five (27.7%) of the included reviews presented a table summarizing bias. Review authors used a varied number of risk of bias tools. Of these, four reviews classified studies as being of “fair” or “appropriate quality” and one review classified studies as having a high risk of bias. One review mentioned the risk of bias assessment in the methodology but did not provide any related analysis. It is worth mentioning that the reviews used a varied amount of risk of bias tools.

#### 4. Discussion

This overview of systematic reviews, to our knowledge the first of its kind on COVID-19, included 18 reviews published up to March 24, 2020, and involving more than 60,000 patients. Ten reviews included meta-analyses. The reviews presented data on clinical manifestations, laboratory and radiological findings and interventions. We found no systematic reviews on the utility of diagnostic tests.

Symptoms were reported in seven reviews; the majority of the patients had fever, cough, dyspnea, myalgia or muscle fatigue and gastrointestinal disorders such as diarrhea, nausea or vomiting. Olfactory dysfunction (anosmia or dysosmia) has been reported in the scientific literature to occur in some patients infected with COVID-19 but this was not reported in any of the assessed systematic reviews [32,33,34]. During the SARS outbreak in 2002, there were reports of impairment of sense of smell associated with the disease [35,36]. Nasal obstruction and post-viral olfactory disorders are possible reasons for this symptom [37].

The reported mortality rates ranged from 0.3 to 14% in the included reviews. Mortality estimates are influenced by the transmissibility rate (basic reproduction number), availability of diagnostic tools, notification policies, asymptomatic presentations of the disease, resources for disease prevention and control and treatment facilities. Even with more than 1,359,398 people infected as of April 7, 2020 [4], variability in the mortality rate fits the pattern of emerging infectious diseases [38]. Furthermore, the reported cases do not consider asymptomatic cases, mild cases where individuals have not sought medical treatment, and the fact that many countries have limited access to diagnostic tests or have implemented testing policies only very recently [39]. The lack of reviews assessing diagnostic testing (sensitivity, specificity and predictive values of RT-PCT or immunoglobulin tests), and the preponderance of studies that assessed only symptomatic individuals, means that considerable imprecision remains around the calculated mortality rate.

Few reviews included treatment data. Those that did described studies offering a very low level of evidence: usually small, retrospective studies with very heterogeneous populations. The efficacy of pharmacological interventions therefore remains extremely unclear. Encouragingly, on April 7, 2020 there were 366 clinical trials for COVID-19 registered on ClinicalTrials.gov, with many pharmacological interventions being tested, so hopefully this gap in the evidence will be filled soon [40].

Seven reviews analyzed laboratory parameters. Elevated CRP, lactate dehydrogenase, AST and ALT were commonly reported; elevated cTnI and procalcitonin, and lower platelet count, appear to be associated with more severe disease. This information may be useful for clinicians who attend patients suspected of COVID-19 in emergency services worldwide, for example, to assess which patients need to be reassessed more frequently. Further research is required to assess their relation to mortality and other patient outcomes, as well as prognosis, in order to investigate whether they can contribute to decision-making.

Most systematic reviews scored poorly on the AMSTAR 2 critical appraisal tool for systematic reviews. Thirteen of the 17 included reviews achieved the lowest rating of “critically low” in the confidence readers can have in the results of the review. In contrast, only two reviews achieved the top rating of “high” confidence in the results. Most of the original studies included in the reviews were case series and case reports, which impacts on the quality of evidence. This has major implications for clinical practice and use of these reviews in evidence-based practice and policy. Clinicians, patients and policymakers can only have the highest confidence in systematic review findings if high-quality systematic review methodologies are employed. The urgent need for information during a pandemic does not justify poor quality reporting.

A limitation of our study is that for AMSTAR 2 assessment we relied on information available in publications; we did not attempt to contact study authors for clarifications or additional data. Appraisal of methodological quality of three reviews was hindered because they were published as letters, labelled as rapid communications. As a result, various details about their review process were not included, leading to AMSTAR 2 questions being answered as not reported and thus to low confidence scores. Full manuscripts might have provided additional information that could have led to higher confidence in the results. In other words, low scores could reflect incomplete reporting, not necessarily low quality review methods. In seeking to make their review available more rapidly and more concisely, methodological details may have been omitted. This reflects a general issue during a crisis where speed and completeness must be balanced. Given that some included reviews scored “high”, the two factors are not mutually exclusive. However, this requires proper resourcing and commitment to ensure users of systematic reviews can have high confidence in the results.

Despite this limitation, this overview adds to the current knowledge by providing a comprehensive summary of all the currently available evidence about COVID-19 from published systematic reviews. This overview followed strict methodological criteria, including a comprehensive and sensitive search strategy and a standard tool for methodological appraisal of systematic reviews. Another potential limitation is that several authors from this study have contributed to one of the reviews identified. To reduce risk of any bias, two authors who did not contribute to the review in question undertook the assessment of its quality and limitations.

Further research is of the utmost importance to assess the impact of antivirals, chloroquine and other interventions on patient outcomes. Additionally, it is essential to determine the accuracy of available diagnostic tests. Understanding the role of different biomarkers to predict clinical outcomes, and whether they could be used in association with validated scores, such as Sequential Organ Failure Assessment (SOFA) score, to help the decision of choosing patients for scarce intensive care unit beds would be very useful.

## **5. Conclusion**

In conclusion, by conducting this overview of systematic reviews, we have quantified the overall incidence of clinical manifestations of patients infected with SARS-CoV-2 and described its more common laboratory and radiological abnormalities. The evidence is sufficient to guide medical doctors and health-related professionals on the construction of clinical rationale of non-tested cases, but insufficient to provide any specific endorsement of pharmacological and non-pharmacological interventions. In order to fill evidence-based gaps, high quality primary studies should be carried out initially, so that well-designed systematic reviews can be performed in the future.



## **Declarations**

### **Ethics approval and consent to participate**

Not required as data was based on primary studies.

### **Consent for publication**

Not applicable

### **Availability of data and materials**

All data collected and analyzed within this study are available from the corresponding author on reasonable request.

### **Competing interests**

The authors declare no conflict of interest.

### **Funding**

This research received no external funding

### **Authors' contributions**

IJBN conceived the research idea and worked as a project coordinator. MSM, DPOM, TCVG, HMA, IW, AM, LP, VTC, IZG, TPP and ANA were involved in data curation, formal analysis, investigation, methodology, and initial draft writing. IJBN, MSM, DPOM, SF, NLB and LP analyzed, processed, interpreted the data and wrote the final manuscript draft and also revised it afterwards. All affiliated authors provided feedback to the manuscript, which was coordinated by IJBN and TCVG.

## **Acknowledgements**

We thank Catherine Henderson DPhil from Swanscoe Communications for pro bono medical writing and editing support. We acknowledge support from Covidence Team, specifically Anneliese Arno. We thank the whole International Network of Coronavirus Disease 2019 (InterNetCOVID-19) for their commitment and involvement. Members of the InterNetCOVID-19 are listed in Appendix 2. We thank Pavel Cerny and Roger Crosthwaite for guiding the team supervisor (IJBN) on human resources management.

## References

1. Cao B, Wang Y, Wen D, Liu W, Wang J, Fan G, et al. A trial of lopinavir-ritonavir in adults hospitalized with severe Covid-19. *New Engl J Med*. 2020; doi: 10.1056/NEJMoa2001282.
2. Center for Disease Control and Prevention (CDC). How COVID-19 spreads. 2020. <https://www.cdc.gov/coronavirus/2019-ncov/prepare/transmission.html>. Accessed 7 April 2020.
3. World Health Organization. Naming the coronavirus disease (COVID-2019) and the virus that causes it. 2020. [https://www.who.int/emergencies/diseases/novel-coronavirus-2019/technical-guidance/naming-the-coronavirus-disease-\(covid-2019\)-and-the-virus-that-causes-it](https://www.who.int/emergencies/diseases/novel-coronavirus-2019/technical-guidance/naming-the-coronavirus-disease-(covid-2019)-and-the-virus-that-causes-it). Accessed 7 April 2020.
4. Johns Hopkins University. Coronavirus COVID-19 Global Cases by the Center for Systems Science and Engineering (CSSE) at Johns Hopkins University (JHU). 2020. <https://www.arcgis.com/apps/opsdashboard/index.html#/bda7594740fd40299423467b48e9ecf6>. Accessed 7 April 2020.
5. World Health Organization. Laboratory testing strategy recommendations for COVID-19. 21 March 2020. [https://apps.who.int/iris/bitstream/handle/10665/331509/WHO-COVID-19-lab\\_testing-2020.1-eng.pdf](https://apps.who.int/iris/bitstream/handle/10665/331509/WHO-COVID-19-lab_testing-2020.1-eng.pdf). Accessed 7 April 2020.
6. Anzai A, Kobayashi T, Linton NM, Kinoshita R, Hayashi K, Suzuki A, et al. Assessing the impact of reduced travel on exportation dynamics of novel coronavirus infection (COVID-19). *J Clin Med*. 2020;9(2):601; doi: 10.3390/jcm9020601
7. Chinazzi M, Davis JT, Ajelli M, Gioannini C, Litvinova M, Merler S, et al. The effect of travel restrictions on the spread of the 2019 novel coronavirus (COVID-19) outbreak. *Science*. 2020; doi: 10.1126/science.aba9757.
8. Borges do Nascimento IJ, Marcolino MS, Bragazzi NL, Cacic N. The novel 2019 coronavirus (nCoV) infection in humans: a systematic review protocol. PROSPERO 2020 CRD42020170623. 2020. [https://www.crd.york.ac.uk/prospero/display\\_record.php?ID=CRD42020170623](https://www.crd.york.ac.uk/prospero/display_record.php?ID=CRD42020170623). Accessed 7 April 2020.
9. Moher D, Liberati A, Tetzlaff J, Altman DG, PRISMA Group. Preferred reporting items for systematic reviews and meta-analyses: the PRISMA statement. *PLOS Med*. 2009;6(7):e1000097; doi: 10.1371/journal.pmed.1000097.
10. Higgins JPT, Thomas J, Chandler J, Cumpston M, Li T, Page MJ, et al. *Cochrane handbook for systematic reviews of interventions version 6.0 (updated July 2019)*. Cochrane, 2019. <https://training.cochrane.org/handbook>. Accessed 7 April 2020.
11. Whitlock EP, Lin JS, Chou R, Shekelle P, Robinson KA. Using existing systematic reviews in complex systematic reviews. *Ann Intern Med*. 2008;148(10):776-82; doi: 10.7326/0003-4819-148-10-200805200-00010.
12. Covidence. Systematic review software. 2020. <https://www.covidence.org>. Accessed 7 April 2020.
13. Shea BJ, Reeves BC, Wells G, Thuku M, Hamel C, Moran J, et al. AMSTAR 2: a critical appraisal tool for systematic reviews that include randomised or non-randomised studies of healthcare interventions, or both. *BMJ*. 2017;358:j4008; doi: 10.1136/bmj.j4008.
14. Adhikari SP, Meng S, Wu YJ, Mao YP, Ye RX, Wang QZ, et al. Epidemiology, causes, clinical manifestation and diagnosis, prevention and control of coronavirus disease (COVID-19) during the early outbreak period: a scoping review. *Infect Dis Poverty*. 2020;9(1):29; doi: 10.1186/s40249-020-00646-x.

15. Li B, Yang J, Zhao F, Zhi L, Wang X, Liu L, et al. Prevalence and impact of cardiovascular metabolic diseases on COVID-19 in China. *Clin Res Cardiol.* 2020; doi: 10.1007/s00392-020-01626-9.
16. Borges do Nascimento IJ, Marušić A, Cacic N, Abdulazeem HM, Groote TC, Jayarah U, et al. Novel coronavirus infection (COVID-19) in humans: a scoping review and meta-analysis. *J Clin Med.* 2020;9(4):941; doi: 10.3390/jcm9040941.
17. Cortegiani A, Ingoglia G, Ippolito M, Giarratano A, Einav S. A systematic review on the efficacy and safety of chloroquine for the treatment of COVID-19. *J Crit Care.* 2020; doi: 10.1016/j.jcrc.2020.03.005.
18. Lippi G, Henry BM. Active smoking is not associated with severity of coronavirus disease 2019 (COVID-19). *Eur J Intern Med.* 2020; doi: 10.1016/j.ejim.2020.03.014.
19. Lippi G, Lavie CJ, Sanchis-Gomar F. Cardiac troponin I in patients with coronavirus disease 2019 (COVID-19): evidence from a meta-analysis. *Prog Cardiovasc Dis.* 2020; doi: 10.1016/j.pcad.2020.03.001.
20. Lippi G, Plebani M. Procalcitonin in patients with severe coronavirus disease 2019 (COVID-19): a meta-analysis. *Clin Chim Acta.* 2020;505:190-1; doi: 10.1016/j.cca.2020.03.004.
21. Lippi G, Plebani M, Michael Henry B. Thrombocytopenia is associated with severe coronavirus disease 2019 (COVID-19) infections: a meta-analysis. *Clin Chim Acta.* 2020; doi: 10.1016/j.cca.2020.03.022.
22. Li LQ, Huang T, Wang YQ, Wang ZP, Liang Y, Huang TB, et al. 2019 novel coronavirus patients' clinical characteristics, discharge rate, and fatality rate of meta-analysis. *J Med Virol.* 2020; doi: 10.1002/jmv.25757.
23. Ludvigsson JF. Systematic review of COVID-19 in children show milder cases and a better prognosis than adults. *Acta Paediatr.* 2020; doi: 10.1111/apa.15270.
24. Lupia T, Scabini S, Mornese Pinna S, Di Perri G, De Rosa FG, et al. 2019 novel coronavirus (2019-nCoV) outbreak: A new challenge. *J Glob Antimicrob Resist.* 2020;21:22-7; doi: 10.1016/j.jgar.2020.02.021.
25. Marasinghe KM. A systematic review investigating the effectiveness of face mask use in limiting the spread of COVID-19 among medically not diagnosed individuals: shedding light on current recommendations provided to individuals not medically diagnosed with COVID-19. *Research Square* 2020; doi: 10.21203/rs.3.rs-16701/v1.
26. Mullins E, Evans D, Viner RM, O'Brien P, Morris E. Coronavirus in pregnancy and delivery: rapid review. *Ultrasound Obstet Gynecol.* 2020; doi: 10.1002/uog.22014.
27. Pang J, Wang MX, Ang IYH, Tan SHX, Lewis RF, Chen JIP, et al. Potential rapid diagnostics, vaccine and therapeutics for 2019 novel coronavirus (2019-nCoV): a systematic review. *J Clin Med.* 2020;9(3):E623; doi: 10.3390/jcm9030623.
28. Rodriguez-Morales AJ, Cardona-Ospina JA, Gutierrez-Ocampo E, Villamizar-Pena R, Holguin-Rivera Y, Escalera-Antezana JB, et al. Clinical, laboratory and imaging features of COVID-19: a systematic review and meta-analysis. *Travel Med Infect Dis.* 2020;101623; doi: 10.1016/j.tmaid.2020.10162.
29. Salehi S, Abedi A, Balakrishnan S, Gholamrezanezhad A. Coronavirus disease 2019 (COVID-19): a systematic review of imaging findings in 919 patients. *AJR Am J Roentgenol.* 2020:1-7; doi: 10.2214/AJR.20.23034.
30. Sun P, Qie S, Liu Z, Ren J, Li K, Xi J. Clinical characteristics of hospitalized patients with SARS-CoV-2 infection: a single arm meta-analysis. *J Med Virol.* 2020; doi: 10.1002/jmv.25735.

31. Yang J, Zheng Y, Gou X, Pu K, Chen Z, Guo Q, et al. Prevalence of comorbidities in the novel Wuhan coronavirus (COVID-19) infection: a systematic review and meta-analysis. *Int J Infect Dis.* 2020; doi: 10.1016/j.ijid.2020.03.017.
32. Bassetti M, Vena A, Giacobbe DR. The novel Chinese coronavirus (2019-nCoV) infections: Challenges for fighting the storm. *Eur J Clin Invest.* 2020;50(3):e13209; doi: 10.1111/eci.13209.
33. Rabin RC. Perda de olfato pode ser um indício peculiar de infecção por coronavírus. *ESTADÃO* [Internet]. 2020 March 24. <https://saude.estadao.com.br/noticias/geral,perda-do-olfato-pode-ser-um-indicio-peculiar-de-infeccao-por-coronavirus,70003245405>. Accessed 7 April 2020.
34. Rabin RC. Lost sense of smell may be a peculiar clue to coronavirus infection. *New York Times* [Internet]. 2020 March 22. <https://www.nytimes.com/2020/03/22/health/coronavirus-symptoms-smell-taste.html>. Accessed 7 April 2020.
35. Hwang CS. Olfactory neuropathy in severe acute respiratory syndrome: report of a case. *Acta Neurol Taiwan.* 2006;15(1):26-8; .
36. Suzuki M, Saito K, Min WP, Vladau C, Toida K, Itoh H, et al. Identification of viruses in patients with postviral olfactory dysfunction. *Laryngoscope.* 2007;117(2):272-7; doi: 10.1097/01.mlg.0000249922.37381.1e.
37. Goncalves S, Goldstein BJ. Pathophysiology of olfactory disorders and potential treatment strategies. *Curr Otorhinolaryngol Rep.* 2016;4(2):115-21; doi: 10.1007/s40136-016-0113-5.
38. Rajgor DD, Lee MH, Archuleta S, Bagdasarian N, Quek SC. The many estimates of the COVID-19 case fatality rate. *Lancet Infect Dis.* 2020; doi: 10.1016/S1473-3099(20)30244-9.
39. Thacker T. India to begin antibody tests to confirm Covid-19 exposure. *The Economics Times* [Internet]. 2020 March 27. [https://economictimes.indiatimes.com/industry/healthcare/biotech/healthcare/covid-19-icmr-invites-bids-for-antibody-kit-for-virus-diagnosis/articleshow/74818887.cms?utm\\_source=contentofinterest&utm\\_medium=text&utm\\_campaign=cppst](https://economictimes.indiatimes.com/industry/healthcare/biotech/healthcare/covid-19-icmr-invites-bids-for-antibody-kit-for-virus-diagnosis/articleshow/74818887.cms?utm_source=contentofinterest&utm_medium=text&utm_campaign=cppst). Accessed 7 April 2020.
40. ClinicalTrials.gov. 366 Studies found for: SARS-Cov-2. 2020. <https://clinicaltrials.gov/ct2/results?cond=SARS-Cov2&term=&cntry=&state=&city=&dist=>. Accessed 7 April 2020.

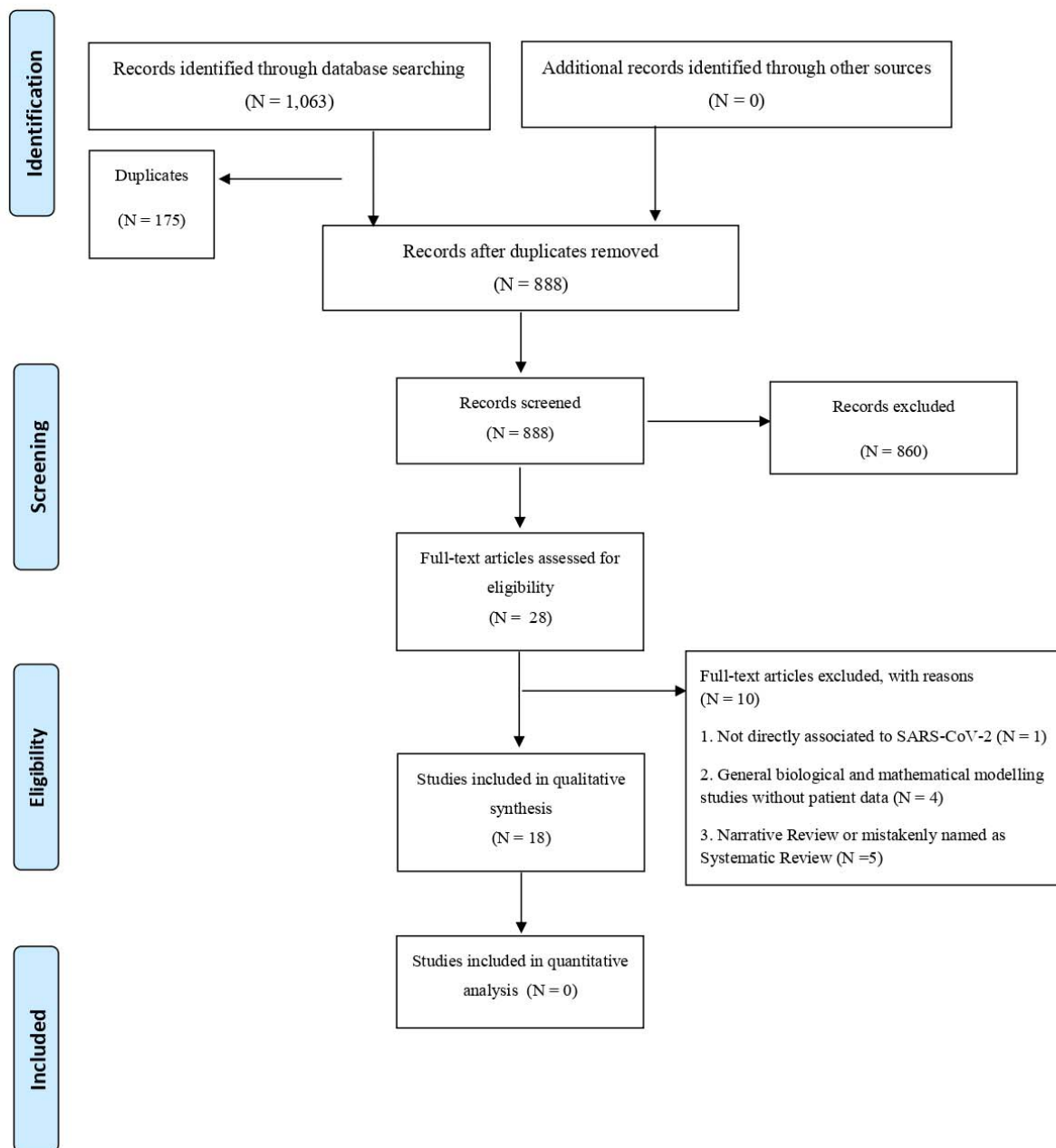
## Coronavirus Disease (COVID-19) Pandemic: An Overview of Systematic Reviews

This file with figures has been provided by the authors to give readers additional information about their work





## PRISMA 2009 Flow Diagram



**Figure 1.** PRISMA flow diagram.

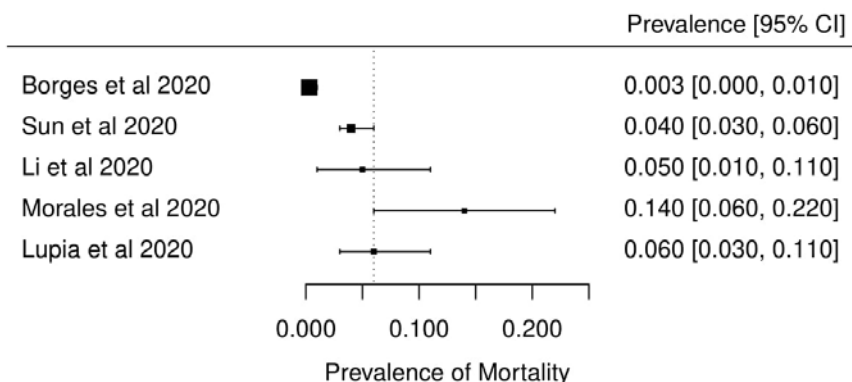


Figure 2. Meta-analysis of prevalence of mortality among five systematic reviews.

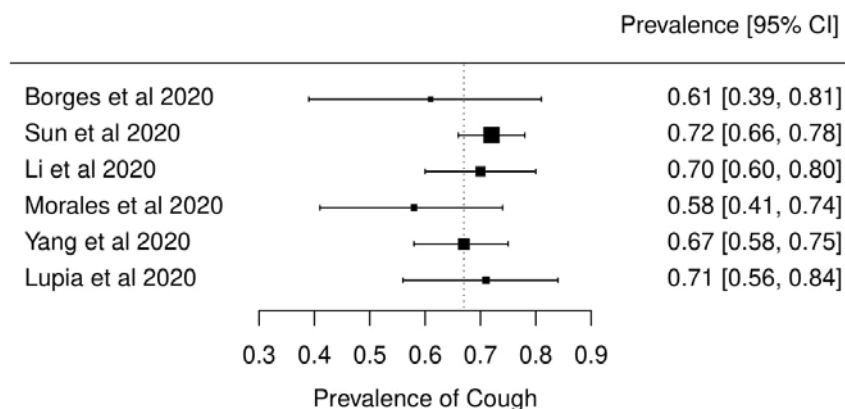


Figure 4. Meta-analysis of prevalence of cough among six systematic reviews.

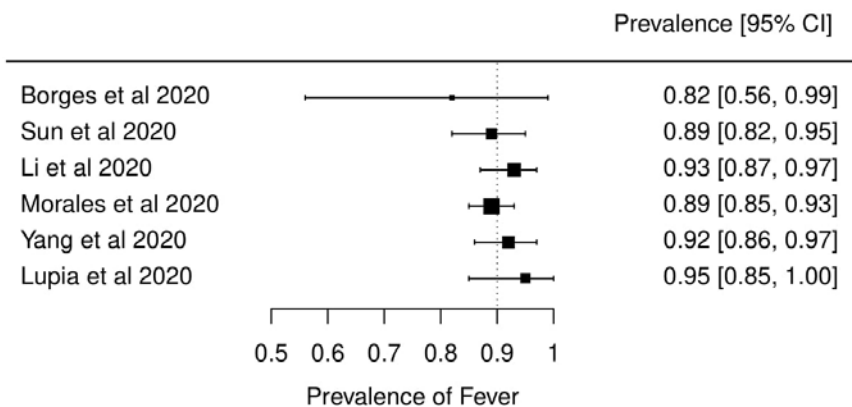


Figure 3. Meta-analysis of prevalence of fever among six systematic reviews.

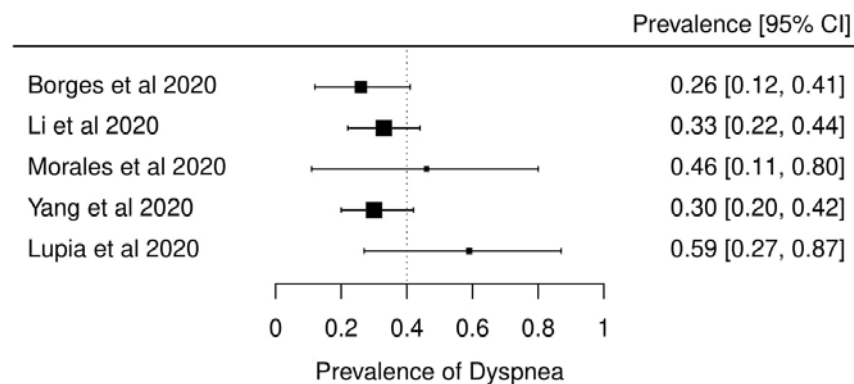


Figure 5. Meta-analysis of prevalence of dyspnea among five systematic reviews.



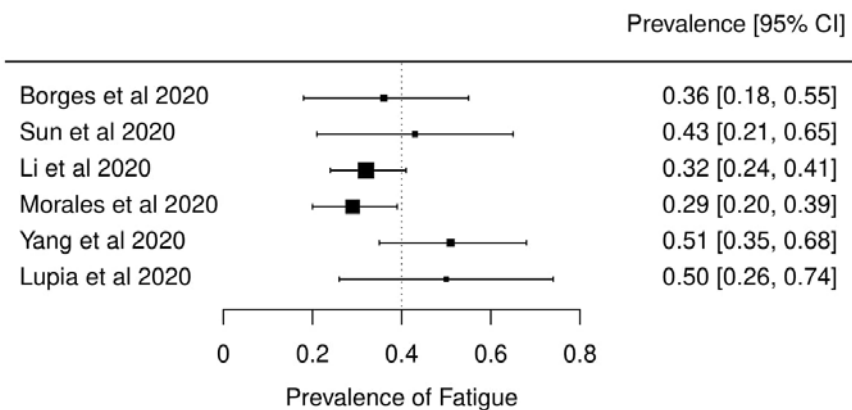


Figure 6. Meta-analysis of prevalence of fatigue or myalgia among five systematic reviews.

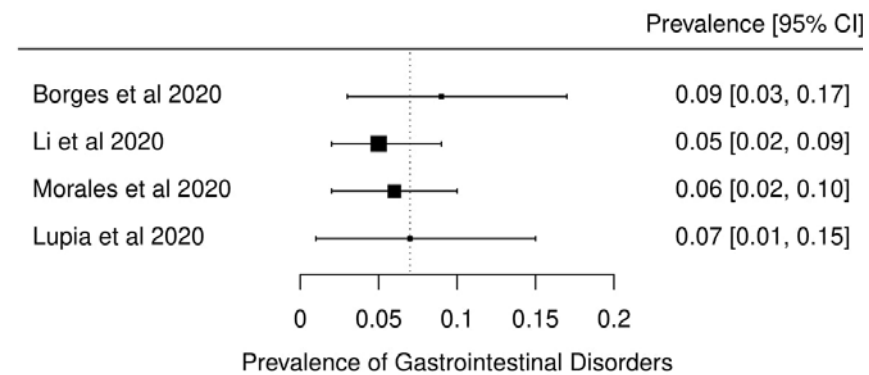


Figure 8. Meta-analysis of prevalence of gastrointestinal disorders among four systematic review

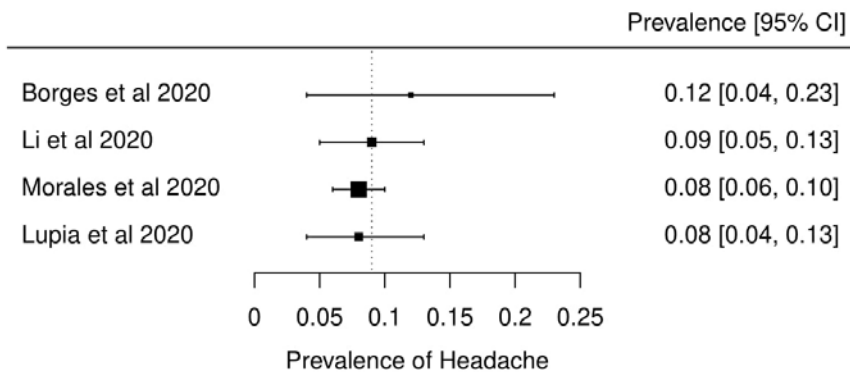


Figure 7. Meta-analysis of prevalence of headache among four systematic reviews.

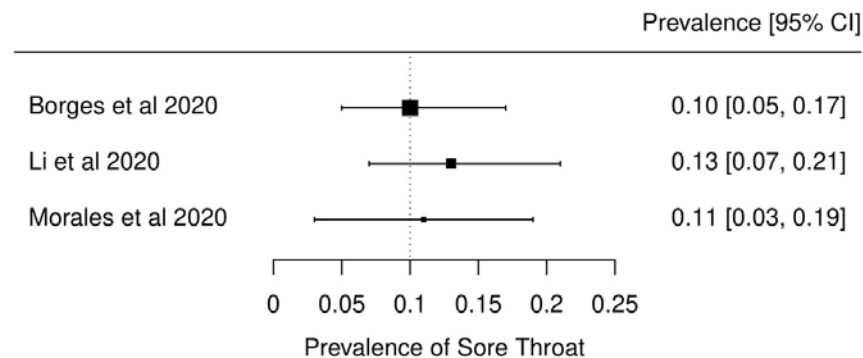
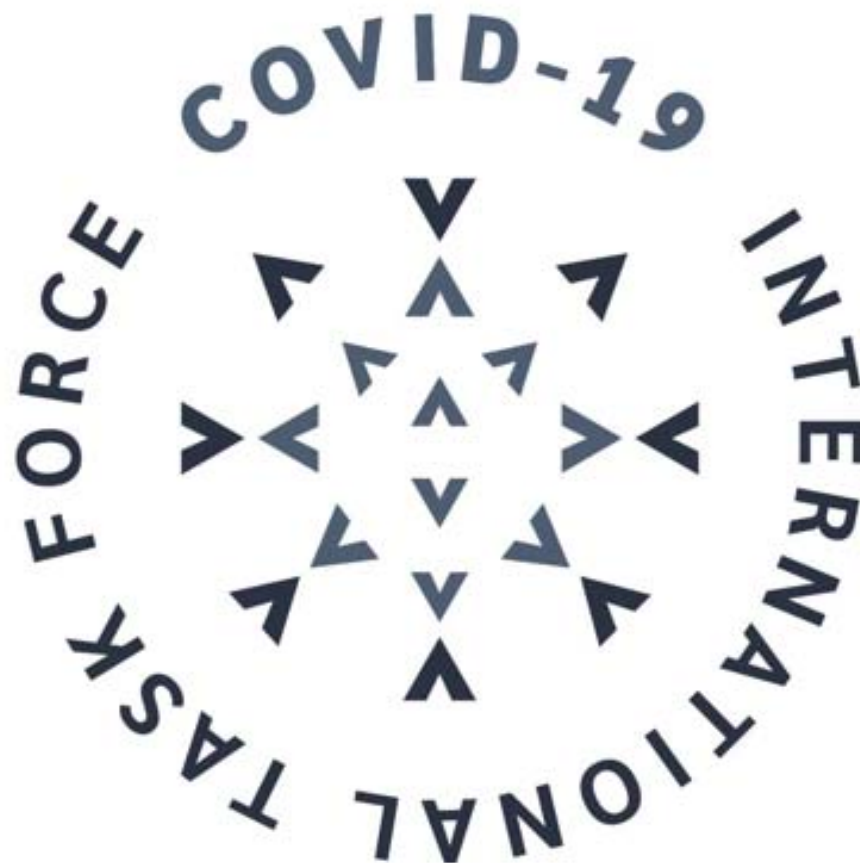


Figure 9. Meta-analysis of prevalence of sore throat among three systematic reviews.



## Coronavirus Disease (COVID-19) Pandemic: A Systematic Review of Systematic Reviews

This file with tables has been provided by the authors to give readers additional information about their work



**Table S1. Descriptive summary of the 18 systematic reviews included in the analysis**

Review identification	Reference	Journal and IF	Time frame assessed	Databases	Number of included studies	Study design of included studies	Meta-analysis performed	Patients: total (n)	Mean/Median age of included patients (years)	Male sex (%)
Adhikari et al	<sup>14</sup>	Infectious Diseases of Poverty, 3.12	January 1, 2020 to January 31, 2020	BioRxiv, medRxiv, ChemRxiv, Google Scholar, PubMed, CNKI and WanFang Data	65	Case reports, case series and observational studies	N	Not reported	Median: 59	More cases
Bo et al	<sup>15</sup>	Clinical Research in Cardiology, 4.907	December 2019 to February 2020	Medline, EMBASE	6	Case reports, case series and observational studies	Y	1,527	Median: 49.75	57.80
Borges do Nascimento et al	<sup>16</sup>	Journal of Clinical Medicine, 5.688	2019 to February 24, 2020	MEDLINE, EMBASE, Cochrane Library, Scopus and LILACS	60	Case reports, case series and observational studies	Y	59,254	Not reported	51.92
Cortegiani et al	<sup>17</sup>	Journal of Critical Care, 2.783	Inception up to March 1, 2020	PubMed and EMBASE, ClinicalTrials.gov, and ICTPR	6	Case reports, case series and observational studies	N	3,090	Not reported	Not reported
Lippi et al <sup>a</sup>	<sup>18</sup>	European Journal of Internal Medicine, 3.660	2019 to March 9, 2020	PubMed, Scopus and Web of Science	5	Case reports, case series and observational studies	Y	1,399	Not reported	Not reported
Lippi et al <sup>b</sup>	<sup>19</sup>	Progress in Cardiovascular Diseases, 6.162	2019 to March 4, 2020	PubMed, Scopus and Web of Science	4	Case reports, case series and observational studies	Y	341	Not reported	Not reported
Lippi et al <sup>c</sup>	<sup>20</sup>	Clinica Chimica Acta, 2.735	Inception to March 3, 2020	PubMed, EMBASE, Web of Science	4	Case reports, case series and observational studies	Y	Not reported	Not reported	Not reported
Lippi et al <sup>d</sup>	<sup>21</sup>	Clinica Chimica Acta, 2.735	2019 to March 6, 2020	PubMed, EMBASE, Web of Science	9	Case reports, case series and observational studies	Y	1,799	Not reported	71.71
Li L. et al	<sup>22</sup>	Journal of Medical Virology, 2.049	December 2019 to February 2020	PubMed, EMBASE, Wangfang Data and ICTPR	10	Case reports, case series and observational studies	Y	1,994	Median: 49.94 (without one study)	63.35

**Table S1. Descriptive summary of the 18 systematic reviews included in the analysis**

Review identification	Reference	Journal and IF	Time frame assessed	Databases	Number of included studies	Study design of included studies	Meta-analysis performed	Patients: total (n)	Mean/Median age of included patients (years)	Male sex (%)
Ludvigsson	<sup>23</sup>	Acta Paediatrica, 2.265	January 1, 2020 to March 18, 2020	PubMed and EMBASE + ICTPR	45	Case reports, case series and observational studies	N	Not summarized	Not reported	Not reported
Lupia et al	<sup>24</sup>	Journal of Global Antimicrobial Resistance, 2,469	November 30, 2019 to February 13, 2020	PubMed and Cochrane	13	Case reports, case series and observational studies		874	42.25 (without one study ranging from 19-63)	53.67
Marasinghe	<sup>25</sup>	Systematic Review, 1.692	Inception up to February 2020	PubMed, EMBASE, Google Scholar, and Scopus	0	Not applicable	N	Not applicable	-	-
Mullins et al	<sup>26</sup>	Ultrasound in Obstetrics & Gynecology, 5.595	Inception up to March 10, 2020	PubMed and MedRxiv	23	Case reports, case series and observational studies	N	32 mothers and 30 newborns	Median: 30	Not applicable
Pang et al	<sup>27</sup>	Journal of Clinical Medicine, 5.688	December 1, 2019 to February 6, 2020	PubMed, Embase and Cochrane Library	27	Case reports, case series and observational studies	N	656	Not reported	Not reported
Rodriguez-Morales et al	<sup>28</sup>	Travel Medicine and Infectious Disease, 4.868	January 1, 2020 to February 23, 2020	PubMed, Scopus and Web of Science	58	Case reports, case series and observational studies	Y	2,874	Mean: 51.97	55.9
Salehi et al	<sup>29</sup>	American Journal of Roentgenology, 3.161	Inception up to February 19, 2020	PubMed, EMBASE, Google Scholar, and the World Health Organization database	30	Case reports, case series and observational studies	N	919	Not reported	Not reported
Sun et al	<sup>30</sup>	Journal of Medical Virology, 2.049	Inception up to February 24, 2020	PubMed, EMBASE and Cochrane Library	10	Case reports, case series and observational studies	Y	50,466	Mean: 44.25	52.01

**Table S1. Descriptive summary of the 18 systematic reviews included in the analysis**

Review identification	Reference	Journal and IF	Time frame assessed	Databases	Number of included studies	Study design of included studies	Meta-analysis performed	Patients: total (n)	Mean/Median age of included patients (years)	Male sex (%)
Yang et al	<sup>31</sup>	International Journal of Infectious Diseases, 3.538	January 1, 2020 to February 25, 2020	PubMed, EMBASE and Web of Science	8	Case reports, case series and observational studies	Y	46.248	Median: 46.0	51.6

**Table S2. Main findings observed in the systematic reviews obtained**

Review identification	Reference	Main findings	Quality of evidence	Overall quality assessment using AMSTAR 2	Review strengths and limitations
-----------------------	-----------	---------------	---------------------	---	----------------------------------

**Table S2. Main findings observed in the systematic reviews obtained**

Review identification	Reference	Main findings	Quality of evidence	Overall quality assessment using AMSTAR 2	Review strengths and limitations
Adhikari et al	14	<p><b>General summary</b></p> <p>The study presents several categories of findings. Epidemiological findings showed that both the immunosuppressed and normal population appear susceptible to the COVID-19 infection. Biological analysis showed that SARS-CoV-2 is similar to <math>\beta</math> coronaviruses found in bats. The effective reproductive number of SARS-CoV-2 (2.9) is higher than that of SARS (1.77). Virus transmission originated in Wuhan and from there it spread internationally. It is likely to be transmitted from human-to-human contact (via droplets or aerosol) as well as via surface contact. Prevention and control consist of isolation, identification and follow-up of contacts, environmental disinfection, and use of personal protective equipment.</p> <p><b>Clinical Symptoms</b></p> <p>The most commonly reported clinical symptoms are fever, cough, myalgia or fatigue, pneumonia, and complicated dyspnea, whereas less commonly reported symptoms include headache, diarrhea, hemoptysis, runny nose, and phlegm producing cough. Patients with mild symptoms were reported to recover after 1 week while severe cases were reported to experience progressive respiratory failure due to alveolar damage from the virus, which may lead to death.</p> <p><b>Diagnosis</b></p> <p>Diagnosis of suspected cases used real-time fluorescence (RT-PCR) to detect the positive nucleic acid of SARS-CoV-2 in sputum, throat swabs, and secretions of the lower respiratory tract samples.</p>	Not available	Critically Low	<p>Early scoping report. Broad range of topics addressed.</p> <p>Good review methods, incompletely reported. Narrative presentation of many results.</p>
Bo et al	15	<p><b>Comorbidities evaluated</b></p> <p>The most prevalent comorbidities among confirmed cases of COVID-19 were hypertension (17.1%), cardiocerebrovascular disease (16.4%) and diabetes (9.7%). Patients with severe disease/in ICU were more likely to have hypertension, cardio-cerebrovascular diseases and diabetes than patients with non-severe disease/not in ICU; 8.0% of patients with COVID-19 suffered acute cardiac injury. Incidence of myocardial injury was ~13 times higher in patients with severe disease/in ICU than patients with non-severe disease/not in ICU.</p>	Not available	Critically Low	<p>Addresses important comorbidity.</p> <p>Good review methods, incompletely reported.</p>
Borges do Nascimento et al	16	<p><b>General summary</b></p> <p>All-cause mortality was 0.3% (95% CI 0.0%–1.0%). Epidemiological studies showed that mortality was higher in males and elderly patients.</p> <p><b>Clinical Symptoms</b></p> <p>The incidence of symptoms were shown as following: Fever 82%, (CI) 56%–99%; Cough 61%, 95% CI 39%–81%; Muscle aches and/or fatigue 36%, 95% CI 18%–55%; Dyspnea 26%, 95% CI 12%–41%; Headache 12%, 95% CI 4%–23%; Sore throat 10%, 95% CI 5%–17% and gastrointestinal symptoms 9%, 95% CI 3%–17%.</p> <p><b>Laboratory findings</b></p> <p>Laboratory findings revealed lymphopenia (<math>0.93 \times 10^9/L</math>, 95% CI <math>0.83</math>–<math>1.03 \times 10^9/L</math> and abnormal C-reactive protein (33.72mg/dL, 95% CI 21.54–45.91mg/dL).</p> <p><b>Radiological findings</b></p> <p>Radiological findings varied, but mostly described ground-glass opacities and consolidation.</p> <p><b>Therapeutic findings</b></p> <p>Antivirals (oseltamivir, umifenovir, ganciclovir, ritonavir) were reported as the most commonly used agents. Use of antibiotics was also reported (vancomycin, azithromycin, meropenem, cefaclor, cefepime and tazobactam). Other medications used were corticosteroids, alpha-interferon, immunoglobulin and antifungal drugs.</p>	All-cause mortality with a very low quality of evidence using GRADE	High	<p>Broad, well-conducted review with meta-analysis.</p> <p>Included studies up to 24 February 2020.</p>

**Table S2. Main findings observed in the systematic reviews obtained**

Review identification	Reference	Main findings	Quality of evidence	Overall quality assessment using AMSTAR 2	Review strengths and limitations
Cortegiani et al	17	<b>Therapeutic findings</b>  Chloroquine seemed to be effective in limiting the replication of SARS-CoV-2 in vitro, justifying clinical research in patients with COVID-19. However, clinical use should adhere to the Monitored Emergency Use of Unregistered Interventions framework or be ethically approved as a trial.	Not available	Critically Low	Addresses important therapeutic potential. Included reports low on evidence hierarchy. Review methods incompletely reported
Lippi et al <sup>a</sup>	18	<b>Laboratory findings</b>  No significant association was found between active smoking and severity of COVID-19 (OR, 1.69; 95% CI, 0.41–6.92; p=0.254).	Not available	Critically Low	Addresses important comorbidity. Rapid communication (letter) with incomplete reporting.
Lippi et al <sup>b</sup>	19	<b>Laboratory findings</b>  cTnI values were significantly increased in patients with severe COVID-19 compared to those with non-severe disease (SMD, 25.6 ng/L; 95% CI, 6.8–44.5 ng/L).	Not available	Critically Low	Addresses important comorbidity with prognostic value. Rapid communication (letter) with incomplete reporting.
Lippi et al <sup>c</sup>	20	<b>Laboratory findings</b>  Results suggested that an increased procalcitonin value is associated with a higher risk of severe COVID-19 (OR, 4.76; 95% CI, 2.74–8.29).	Not available	Critically Low	Addresses lab value with potential prognostic value. Rapid communication (letter) with incomplete reporting.
Lippi et al <sup>d</sup>	21	<b>Laboratory findings</b>  Platelet count was significantly lower in patients with more severe COVID-19 (weighed mean difference (WMD) $-31 \times 10^9/L$ ; 95% CI $-35-29 \times 10^9/L$ ). A subgroup analysis comparing patients by survival, found an even lower platelet count was observed with mortality (WMD, $-48 \times 10^9/L$ ; 95% CI $-57$ to $-39 \times 10^9/L$ ). A low platelet count was associated with over fivefold enhanced risk of severe COVID-19 (OR, 5.1; 95% CI 1.8-14.6).	Not available	Critically Low	Addresses lab value with potential prognostic value. Good review methods incompletely reported.
Li L. et al	22	<b>General summary</b>  The patients were 60% male (95% CI [0.54, 0.65]), the discharge rate was 42% (95% CI [0.29, 0.55]), and the fatality rate was 7% (95% CI [0.04,0.10]).  <b>Clinical Symptoms</b>  Clinical symptoms presented were: fever (88.5%), cough (68.6%), myalgia or fatigue (35.8%), expectoration (28.2%), and dyspnea (21.9%), headache or dizziness (12.1%), diarrhea (4.8%), nausea and vomiting (3.9%).  <b>Laboratory findings</b>  Laboratory results showed lymphocytopenia (64.5%), increase of C-reactive protein (44.3%), increase of lactic dehydrogenase (28.3%), and leukocytopenia (29.4%).	Not available	Moderate	Well-conducted review with meta-analysis. Included studies were from China only.



**Table S2. Main findings observed in the systematic reviews obtained**

Review identification	Reference	Main findings	Quality of evidence	Overall quality assessment using AMSTAR 2	Review strengths and limitations
Ludvigsson	23	<p><b>General summary</b></p> <p>Children account for 1–5% of diagnosed COVID-19 cases and they frequently have milder disease than adults; deaths have been extremely rare. Newborn infants have developed symptomatic COVID-19, but evidence of vertical intrauterine transmission is scarce.</p> <p><b>Clinical Symptoms</b></p> <p>Clinical characteristics presented mainly as fever and respiratory symptoms, and fewer children seem to have developed severe pneumonia.</p> <p><b>Diagnosis</b></p> <p>Nasal and pharyngeal swabs or blood analysis are adequate samples for RT-PCR. Sequencing of specimens and clinical diagnosis have been used as alternative diagnostic approaches.</p> <p><b>Laboratory findings</b></p> <p>Elevated inflammatory markers were less common in children than adults and lymphocytopenia seemed rare.</p> <p><b>Radiological findings</b></p> <p>Included studies described ground-glass opacities, local or bilateral patchy shadowing, and halo signs.</p> <p><b>Therapeutic findings</b></p> <p>Suggested treatment included providing oxygen, inhalations, nutritional support and maintaining fluids and electrolyte balances.</p>	Not available	Critically Low	<p>Important population: children.</p> <p>Review methods incompletely reported. Individual studies described narratively without meta-analysis.</p>
Lupia et al	24	<p><b>General summary</b></p> <p>Most of the patients were male (age range, 8-92). Cardiovascular, digestive and endocrine system diseases were commonly reported.</p> <p><b>Clinical Symptoms</b></p> <p>Fever, cough, dyspnea, myalgia and fatigue were the most common symptoms.</p> <p><b>Laboratory findings</b></p> <p>Case studies reported leucopenia, thrombocytopenia, slightly elevated AST and ALT, and elevated C-reactive protein.</p> <p><b>Radiological findings</b></p> <p>Multiple bilateral lobular and subsegmental areas of consolidation or bilateral GGOs were most commonly reported in chest CT findings.</p> <p><b>Therapeutic findings</b></p> <p>Lopinavir, ritonavir, umifenovir and oseltamivir were the most common antivirals used to treat the infection. Supportive intervention (oxygen therapy) was frequently required by patients. Empirical antibiotics have been described. Steroids were also commonly described.</p>	Not available	Critically Low	<p>Summarizes findings from English-language case reports and case series.</p> <p>Review methods incompletely reported.</p>
Marasinghe	25	<p>No studies were found investigating the effectiveness of face mask use in limiting the spread of this specific virus.</p>		NA	<p>Important preventive topic.</p> <p>No data available to review.</p>

**Table S2. Main findings observed in the systematic reviews obtained**

Review identification	Reference	Main findings	Quality of evidence	Overall quality assessment using AMSTAR 2	Review strengths and limitations
Mullins et al	26	<p><b>General information</b></p> <p>Study revealed that 7 mothers were asymptomatic (21.8%) and 2 mothers were admitted to the intensive care unit (6.25%). Delivery was by Cesarean section in 27 cases and by vaginal delivery in two, and 15 (47%) delivered preterm. There was one stillbirth and one neonatal death.</p>	Not available	Critically Low	Important population: pregnant women. Rapid review methods lowered quality.
Pang et al	27	<p><b>Diagnosis</b></p> <p>Possible diagnostic approaches are RT-PCR, serological assays and point-of-care testing.</p> <p><b>Therapeutic findings</b></p> <p>Several trials were identified, investigating therapeutics such as hydroxychloroquine, lopinavir and ritonavir, glucocorticoids therapy. Several vaccines are in development.</p>	Not available	Critically Low	Review focused on potential new diagnostics and therapeutics. Review methods incompletely reported.
Rodriguez-Morales et al	28	<p><b>General information</b></p> <p>20.3% (95% CI 10.0–30.6%) of patients required ICU support, 32.8% presented with acute respiratory distress syndrome (95% CI 13.7–51.8) and 6.2% (95% CI 3.1–9.3) with shock. The case fatality rate was 13.9% (95% CI 6.2–21.5%).</p> <p><b>Clinical Symptoms</b></p> <p>Clinical symptoms presented were fever (88.7%, 95% CI 84.5–92.9%), cough (57.6%, 95% CI 40.8–74.4%) and dyspnea (45.6%, 95% CI 10.9–80.4%).</p> <p><b>Laboratory findings</b></p> <p>Regarding laboratory findings, decreased albumin (75.8%, 95% CI 30.5–100.0%), high C-reactive protein (58.3%, 95% CI 21.8–94.7%), and high lactate dehydrogenase (LDH) (57.0%, 95% CI 38.0–76.0), lymphopenia (43.1%, 95% CI 18.9–67.3), and high erythrocyte sedimentation rate (ESR) (41.8%, 95% CI 0.0–92.8), were the most common laboratory results.</p> <p><b>Radiological findings</b></p> <p>Results showed bilateral pneumonia, with associated ground-glass opacities.</p>	Not available	High quality Review	Broad, well-conducted review with meta-analysis. Included studies up to 23 February 2020.
Salehi et al	29	<p><b>Radiological findings</b></p> <p>A correlation was found between CT findings and disease severity and mortality. In severely ill patients, the most commonly reported CT findings were bilateral and multilobar involvement and subsegmental consolidative opacities. ARDS was the most common indication for transfer to the ICU, with the majority of COVID-19 mortalities occurring among patients with ARDS in the ICU.</p>	Not available	Critically Low	Focused review on radiological imaging. Review methods incompletely reported. Only English-language studies included.
Sun et al	30	<p><b>General information</b></p> <p>The percentage of severe cases among all infected cases was 0.181 (95% CI: 0.127–0.243), and the case fatality rate was 0.043 (95% CI: 0.027, 0.061).</p> <p><b>Clinical Symptoms</b></p> <p>Clinical symptom presented were fever 0.891 (95% CI: 0.818–0.945), cough 0.722 (95% CI: 0.657–0.782), muscle soreness or fatigue 0.425 (95% CI: 0.213–0.652). ARDS incidence was 0.148 (95% CI: 0.046–0.296)</p> <p><b>Radiological findings</b></p> <p>The incidence of abnormal chest computer tomography (CT) was 0.966 (95% CI: 0.921–0.993).</p>	Not available	Low	Broad review of retrospective studies. Review methods incompletely reported. Small number of included studies compared to similar reviews.

**Table S2. Main findings observed in the systematic reviews obtained**

Review identification	Reference	Main findings	Quality of evidence	Overall quality assessment using AMSTAR 2	Review strengths and limitations
Yang et al	31	<p><b>Clinical Symptoms</b></p> <p>The most common clinical symptoms were fever (91±3%, 95% CI 86–97%), cough (67±7%, 95% CI 59–76%), fatigue (51±0%, 95% CI 34–68%) and dyspnea (30±4%, 95% CI 21–40%).</p> <p><b>Comorbidities evaluated</b></p> <p>The most common comorbidities were hypertension (17±7, 95% CI 14–22%), diabetes (8±6, 95% CI 6–11%), cardiovascular diseases (5±4, 95% CI 4–7%) and respiratory system diseases (2±0, 95% CI 1–3%). There was a higher likelihood that patients with severe disease had hypertension (OR 2.36, 95% CI: 1.46–3.83), respiratory disease (OR 2.46, 95% CI: 1.76–3.44), or cardiovascular disease (OR 3.42, 95% CI: 1.88–6.22), compared with patients with non-severe disease.</p>	Not available	Critically Low	Important focus on comorbidities. Review methods incompletely reported.

**Table S3. Quality assessment rating of systematic reviews included in the COVID-19 overview**

Study identification	Reference	AMSTAR 2 Score																AMSTAR 2 Score Summary	Funding or support for the systematic review
		1	2	3	4	5	6	7	8	9	10	11	12	13	14	15	16	Final Rating	
Adhikari et al	<sup>10</sup>	Y	N	N	PY	Y	Y	U	Y	N	N*	NA	N	N	NA	NA	Y	Critically Low	No
Bo et al	<sup>11</sup>	Y	N	U	PY	N (U)	N (U)	U	Y	N	N*	Y	N	N	Y	N	Y	Critically Low	No
Borges do Nascimento et al	<sup>12</sup>	Y	Y	Y	Y	Y	Y	Y	Y	Y	N*	Y	Y	Y	Y	Y	Y	High	No
Cortegiani et al	<sup>13</sup>	Y	N	N	Y	Y	Y	N	Y	N	N	NA	N	N	NA	NA	Y	Critically Low	No
Lippi et al <sup>a</sup>	<sup>14</sup>	Y	N	N	PY	N (U)	N (U)	N	N	N	N*	Y	N	N	N	N	Y	Critically Low	No
Lippi et al <sup>b</sup>	<sup>15</sup>	Y	N	N	PY	N (U)	N (U)	N	N	N	N*	Y	N	N	N	N	Y	Critically Low	No
Lippi et al <sup>c</sup>	<sup>16</sup>	Y	N	N	PY	N (U)	N (U)	N	N	N	N*	Y	N	N	N	N	N	Critically Low	Not reported
Lippi et al <sup>d</sup>	<sup>17</sup>	Y	N	N	PY	Y	Y (U)	N	Y	N	N*	Y	N	N	Y	N	Y	Critically Low	No
Li L. et al	<sup>18</sup>	Y	N	N	PY	Y (U)	Y	U	Y	Y	N*	Y	Y	N	Y	Y	Y	Moderate	No
Ludvigsson	<sup>19</sup>	Y	N	N	PY	N	N	N	N	N	N*	NA	N	N	NA	NA	Y	Critically Low	No
Lupia et al	<sup>20</sup>	Y	N	N	PY	Y	Y	N	Y	N	N*	NA	N	N	NA	NA	Y	Critically Low	No
Marasinghe	<sup>21</sup>	Y	N	Y	PY	N	N	N	NA	N	N	NA	NA	NA	NA	NA	Y	NA	No
Mullins et al	<sup>22</sup>	Y	N	N	PY	N	N	N	Y	N	N*	NA	N	N	NA	NA	Y	Critically Low	No
Pang et al	<sup>23</sup>	Y	N	Y	Y	Y	Y	U	Y	N	N*	NA	N	N	NA	NA	Y	Critically Low	No
Rodriguez-Morales et al	<sup>24</sup>	Y	Y	Y	PY	Y	Y	U	Y	Y	N*	Y	Y	Y	N	Y	Y	High	No
Salehi et al	<sup>25</sup>	Y	N	N	PY	Y	Y	U	N	Y	N*	NA	NA	N	NA	NA	N	Critically Low	Not reported
Sun et al	<sup>26</sup>	Y	N	Y	PY	Y	Y	U	Y	Y	N*	Y	Y	N	Y	Y	Y	Low	No

medRxiv preprint doi: <https://doi.org/10.1101/2020.04.16.20068213>; this version posted April 22, 2020. The copyright holder for this preprint (which was not certified by peer review) is the author/funder, who has granted medRxiv a license to display the preprint in perpetuity. All rights reserved. No reuse allowed without permission.

Yang et al <sup>27</sup> Y N U PY Y N(U) U Y N N\* Y N N Y N Y Critically Low No

Note - Yes; N- No; PY - partially yes; NA- Not applicable; U - unclear; AMSTAR 2 Questions:

1. "Did the research questions and inclusion criteria for the review include the components of PECO?" Note: We mainly assessed the definition of exposure to SARS-CoV-2;
2. "Did the report of the review contain an explicit statement that the review methods were established prior to the conduct of the review and did the report justify any significant deviations from the protocol?";
3. "Did the review authors explain their selection of the study designs for inclusion in the review?";
4. "Did the review authors use a comprehensive literature search strategy?" Note: Y with a detailed search strategy, PY for those with key words and 2 or more database or explained language restrictions; N considered with no search strategy proposed;
5. "Did the review authors perform study selection in duplicate?";
6. "Did the review authors perform data extraction in duplicate?";
7. "Did the review authors provide a list of excluded studies and justify the exclusions?" Note: U stands for unclear presented the flow chart but did not mention the reasons;
8. "Did the review authors describe the included studies in adequate detail?";
9. "Did the review authors use a satisfactory technique for assessing the risk of bias (RoB) in individual studies that were included in the review?";
10. "Did the review authors report on the sources of funding for the studies included in the review?" Note: Not applicable (NA) for many studies, so decided marking as Yes (Y);
11. "If meta-analysis was performed did the review authors use appropriate methods for statistical combination of results?" Note: Not applicable (NA) if the study did not perform a meta-analysis;
12. "If meta-analysis was performed, did the review authors assess the potential impact of RoB in individual studies on the results of the meta-analysis or other evidence synthesis?";
13. "Did the review authors account for RoB in individual studies when interpreting/ discussing the results of the review?";
14. "Did the review authors provide a satisfactory explanation for, and discussion of, any heterogeneity observed in the results of the review?";
15. "If they performed quantitative synthesis did the review authors carry out an adequate investigation of publication bias (small study bias) and discuss its likely impact on the results of the review?";
16. "Did the review authors report any potential sources of conflict of interest, including any funding they received for conducting the review?"

