

1 Title: **The Enlightenment of mainland China's epidemic situation to the world**
2 **through the intrinsic growth rule of infected and cured cases with COVID-19**

3
4 Chuanliang Han^{1△}, Yimeng Liu^{2,3,4△}, Jiting Tang^{2,3,4}, Yuyao Zhu^{2,3,4} and Saini Yang^{2,3,4*}

5 ¹State Key Laboratory of Cognitive Neuroscience and Learning & IDG/McGovern
6 Institute for Brain Research, Beijing Normal University, Beijing 100875, China

7 ²Key Laboratory of Environmental Change and Natural Disaster, Ministry of Education,
8 Beijing Normal University, Beijing 100875, China

9 ³State Key Laboratory of Earth Surface Processes and Resource Ecology, Beijing
10 Normal University, Beijing 100875, China

11 ⁴Academy of Disaster Reduction and Emergency Management Ministry of Emergency
12 Management and Ministry of Education, Faculty of Geographical Science, Beijing
13 Normal University, Beijing 100875, China

14
15 [△]C.L.H and Y.M.L contributed equally to this work

16
17 ***Correspondence authors:**

18 Saini Yang,
19 Key Laboratory of Environmental Change and Natural Disaster, Ministry of Education
20 & State Key Laboratory of Earth Surface Processes and Resource Ecology & Academy
21 of Disaster Reduction and Emergency Management Ministry of Emergency
22 Management and Ministry of Education, Faculty of Geographical Science, Beijing
23 Normal University, Beijing 100875, China

24 Email: yangsaini@bnu.edu.cn

25
26 **Conflict of Interest:** The authors declare no competing conflicts of interest.

27 **Acknowledgements:** This study is sponsored by the National Key Research and
28 Development Program of China (2018YFC1508903), the National Natural Science
29 Foundation of China (41621061) and the support of International Center for

30 Collaborative Research on Disaster Risk Reduction (ICCR-DRR).

NOTE: This preprint reports new research that has not been certified by peer review and should not be used to guide clinical practice.

32 **Abstract**

33 The novel coronavirus disease (COVID-19) emerged at the end of 2019 has been
34 controlled in mainland China so far, while it is still spreading all over the world and
35 causing global panic. When the pandemic will end is an issue of great concern. A
36 logistic model depicting the growth rules of infected and cured cases in mainland China
37 may shed some light on this question. We extend this model to 31 countries outside
38 China experiencing serious COVID-2019 outbreaks. The model well explained data
39 from each country in our study ($R\text{-Square} \geq 0.95$). For the infected case, the
40 semi-saturation period of these countries are ranging from 63 to 170 (Mar 3 to Jun 18).
41 For all countries in our study, the increasing rate (k) and semi-saturation period (t_0) of
42 the fitted curves are negatively correlated for both infected and cured cases. The
43 increasing rate of infected case is positively correlated with that of cured case, so is the
44 semi-saturation period. We used a simple linear model to bridge the relationship
45 between the increasing rules of infected and cured case. According to the connection of
46 infected and cured growth rules which is identified from cases in China, we predicted
47 that the semi-saturation period of the cured case outside China ranges from 82 to 196
48 (Mar 22 to July 8) for cured cases. More importantly, we found there exists strong
49 positive correlation between the semi-saturation period (t_0) of infected cases and the
50 timing of government's response, which could provide strong evidence for the
51 effectiveness of rapid epidemic prevention in various countries.

52

53

54 **Introduction**

55 In December 2019, a series of cases with unknown cause of pneumonia appeared in
56 Wuhan, the capital of Hubei Province in mainland China ([WHO_a](#)). Deep sequencing
57 analysis later from lower respiratory samples confirmed a novel coronavirus, which was
58 firstly named as 2019 novel coronavirus (2019-nCoV) on Jan 12, 2020 and may
59 originate from bat ([Zhou et al., 2020](#)). The coronavirus (SARS-CoV-2) has been
60 officially renamed as COVID-19 on February 12, 2020. Human to human transmission
61 through COVID-19 has been confirmed not only in China ([Wang et al., 2020](#); [Li et al.,](#)
62 [2020](#); [Zhu et al., 2020](#); [Hui et al., 2020](#)), but in dozens of countries around world such as
63 Republic of Korea ([Choi et al., 2020](#); [Ki et al., 2020](#); [Shim et al., 2020](#)), Italy
64 ([Livingston et al., 2020](#); [Spina et al., 2020](#); [Rosenbaum, 2020](#)) and Iran ([Tuite et al.,](#)
65 [2020](#); [Abdi, 2020](#); [Zhuang et al., 2020](#)). So far, the epidemic situation in mainland China
66 has been effectively controlled since there are only sparse daily local new cases since
67 Mar 19, 2020, and the cure rate in mainland China has risen up to 93.51% by April 13
68 ([Chinese Center for Disease Control and Prevention, CCDC](#)). However, the epidemic
69 situation outside China is much more serious than before. As of Apr 13, there have been
70 a total of 1788665 confirmed cases of COVID-19 globally, and the death and cured rate
71 are 6.35% and 20.45 % respectively ([Sina.com](#)). When the inflection point will come for
72 both infection and cure outside China remains unclear. The hope and lessons for
73 COVID-19 control from China is necessary and worth to quantify ([Azman & Luquero,](#)
74 [2020](#)).

75

76 We applied a descriptive model that has been proved robust and stable ([Han et al., 2020](#))
77 to analyze the data on the COVID-19 global cases (infected and cure cases in mainland
78 China, and infected cases countries outside China). We then obtained the parameter
79 relationship between parameters of infected and cure cases in mainland China. Further,
80 we used that relationship to map parameter space of infected case to the parameter space
81 of cured cases for 31 countries globally. In the end, we tried to explore the relationship

82 between the model parameters and governmental control measures.

83

84 **Method**

85 **Sources of Data:**

86 The cumulative number of confirmed and cured COVID-19 cases in mainland China
87 was obtained from the National Health Commission of China, and the provincial Health
88 Commission of 30 provincial administrative regions (excluded Tibet, because the only
89 one confirmed infected COVID-19 case in Tibet has been cured on Feb. 12) in mainland
90 China (January 10 to March 19, 2020), which is publically available. All cases were
91 laboratory confirmed following the published standards made by the National Health
92 Commission of China (CCDC_a). The basic test procedure has been described in detail in
93 previous work (Zhou et al., 2020; Huang et al., 2020). This dataset was partially
94 analyzed in an initial work on this topic (Han et al., 2020).

95

96 We selected 31 countries outside China with serious coronavirus epidemic situation in
97 our analyses (January 10 to Apr 13, 2020), whose population counts for 39.4% of the
98 world's population (57.8% if includes China) and 81.6% of the world's infected
99 COVID-19 cases (86.2% if includes China) (WHO_a). The data of COVID-19 cases in
100 countries outside China were obtained from the situation reports on the official website
101 of World Health Organization (WHO_a), which is publicly available. The data used in this
102 study include the cumulative number of reported laboratory-confirmed COVID-19 cases.
103 Countries included in our study are Republic of Korea, Japan, Australia, Singapore,
104 which are in Western Pacific Region; Italy, Spain, France, Germany, Switzerland, the
105 United Kingdom, Netherlands, Sweden, Denmark, Austria, Belgium, Portugal, Czechia,
106 Finland, Ukraine, Slovakia, Bulgaria, Lithuania, which are in European Region; India in
107 South-East Asia Region, Islamic Republic of Iran, Lebanon, which are in Eastern
108 Mediterranean Region; United States of America, Canada, Brazil, Mexico, which are in

109 America; South Africa, Ethiopia, which are in Africa. All the laboratory-confirmed
110 cases are determined according to the WHO standard.
111 Governments of these countries all declared a state of national emergency, wartime, or a
112 blockade of their borders as a result of the COVID-19 outbreak. In this study, we
113 collected the time point of government declaration from mainstream authoritative media
114 of each country we selected.

115

116 **Epidemic curve modeling**

117 In this work, we used a sigmoid-formed descriptive model (Equation (1)), which is a
118 derivation from logistic form differential equations ([Han et al., 2020](#)).

$$119 \quad N(t) = \frac{A}{1+e^{-k(t-t_0)}} \quad (1)$$

120 where $N(t)$ is the general form of the cumulative numbers of infected or cured patients at
121 time t . A denotes the maximum number of infections or cures, k represents incidence
122 growth rate, t_0 is the inflection point of the sigmoid curve. This descriptive model has
123 been verified by not only the infected, death and cured cases of COVID-19, but also the
124 data of SARS in 2003 ([Han et al., 2020](#)). For infected case, there are three parameters (A ,
125 k , t_0) in the model, and for cured case, we fixed A to the subtraction of the maximum
126 number of cumulative infections and death, which obeys the basic biological fact. It is
127 worth mentioning that in our model, t_0 is the inflection point in mathematical definition.
128 In this paper, we assumed that t_0 is the time of inflection point of epidemic situation in a
129 region.

130

131 We processed the data and modeling with custom scripts on MATLAB (the Math
132 Works). We adopted the nonlinear least square (NLS) algorithm for data fitting and
133 parameter estimation.

134

135

136 **Results**

137 With the cumulative number of confirmed and cured cases in 30 provinces of mainland
138 China as well as in 31 countries and above-mentioned model, all data could be well
139 explained ($R^2 > 0.95$) by the descriptive model (See Methods, [Fig. 1A-C](#), [Fig. 4A-C](#)).

140

141 **Relationship between infected and cured cases in mainland China**

142 The epidemic situation of COVID-19 has been controlled in China ([CCDC_b](#)), with a cure
143 rate of 93.51% ([CCDC_a](#)). Time series of infected and cured cases and their fitted curves
144 of three example provinces (provinces of Anhui, Heilongjiang, Hebei) are shown in [Fig.](#)
145 [1A-C](#). By observing the fitted curves of all provinces in mainland China ([Supplementary](#)
146 [Figure S1](#)), we found the increasing rate (k) of infected case is larger than that of cured
147 case and the semi-saturation period (t_0) of infected cases is shorter than that of cured
148 cases.

149 As shown in Figure 2, the parameter space of k and t_0 are separated for infected (red
150 circle) and cured cases (blue circle), and there is a significant negative correlation (for
151 infected case, $r = -0.46$, $p = 0.0103$; for cured case, $r = -0.56$, $p = 0.0012$; Pearson correlation).
152 As we compared these two parameters of infected and cured cases respectively, we
153 found infection case has larger ($t = 6.9136$, $p < 10^{-7}$, right-tailed test) increasing rate ([Fig.](#)
154 [2B](#)) but smaller ($t = -37.271$, $p < 10^{-25}$, left-tailed test) semi-saturation period ([Fig. 2C](#)) than
155 that of cured cases. The increasing rate of infected and cured case is significant
156 positively correlated ($r = 0.38$, $p = 0.0359$, Pearson Correlation), so is the semi-saturation
157 period of infected and cured case ($r = 0.66$, $p = 0.0001$, Pearson Correlation). Each of them
158 could be fitted to a linear model, with a slope and intercept of 0.36 (CI: [0.0268, 0.698])
159 and 0.1 (CI: [0.014, 0.191]), respectively (panel B), and that of panel C is 1.06 (CI: [0.59,
160 1.54]) and 15.36 (CI: [-0.85, 31.56]).

161

162 **Intrinsic growth rules of COVID-19 infections outside China**

163 With the dataset of infected case in mainland China, there shows time stability of this

164 model (Fig. 3). An example of Fujian province is shown in Figure 3A. It is clear that as
165 the increase of length of time-series data, the fitting curves converges better to the actual
166 number of cases (black dots).

167 We defined an index, the minimum time length (MTL), to measure how much data is
168 necessary to produce stable output. This index is the time length with which the change
169 of parameter value (k or t_0) is less than 5% in two consecutive days. With the data of 30
170 provinces in China, we found that the MTL for increasing rate (k) is 15 days (Fig. 3B)
171 and for semi-saturation period (t_0), is 26 days (Fig. 3C). This result provides some hint
172 on how much data is necessary to measure the epidemic situation.

173

174 After identifying the relationship between the increasing rate and the semi-saturation
175 period, we applied this relationship to the COVID-19 cases from 31 countries. We
176 applied the descriptive model to fit the data of the cumulative infected cases in each of
177 the 31 countries. Figure 4 illustrates three countries' time-series data of infection
178 (Canada, Germany and Iran, Fig. 4A-C) (See Supplementary Figure S2 for all 31
179 countries' plots). All data series of infected case could be well explained by our model
180 ($R^2 > 0.95$). The average change rate of these parameters is already lower than 5% (Fig 4
181 D-F) which indicates the parameters we estimated from the model is stable. We noticed
182 that the increasing rate of 31-country cases does not have a significant difference
183 ($t=1.197, p=0.237$ two-tailed test) with that of Chinese provinces, but the 31-country
184 cases have significantly longer ($t=-17.4819, p < 10^{-20}$, right-tailed test) semi-saturation
185 period. The numbers indicated that the t_0 of infections in 31 countries is averaged at 98
186 (std: 20.5), and the date matched to which is around Apr 7 (ranging from Mar 3 to Jun
187 18).

188

189 **Prediction for growth rules of cured COVID-19 cases and its relation to the timing** 190 **of governmental control measures**

191 By observing the increasing rate (k) and semi-saturation period (t_0) of infected case in 31

192 countries, we found there was a weak negative correlation ($r=-0.63$, $p=0.0001$, Pearson
193 Correlation) (Fig. 5) between these two parameters, which shows similar tendency with
194 results of provinces in mainland China (Fig. 2B). To predict the increasing rate (k) and
195 inflection point (t_0) of the cured COVID-19 cases outside China, we mapped the
196 parameter space of infected cases into the parameter space of cured cases, based on the
197 parameter relationship between infected cases and cured cases obtained from China (Fig.
198 2BC). For the 31 countries, the increasing rate ranges from 0.08 to 0.45. The mean t_0 of
199 the fitted cured cases curves is 119.71 (std: 21.73), which means the mean
200 semi-saturation period (t_0) for these 31 countries will come around Apr. 29, 2020
201 (ranging from Mar 22 to July 8).

202

203 To explore the practical implication of these parameters, we took the timing of
204 governmental emergency control measures related to COVID-19 as a variable to analyze
205 its relationship with the key parameters (Fig. 6). We found the Semi-Saturation Period
206 (SSP) showed a significant positive correlation ($r=0.73$, $p<0.0001$, Spearman correlation)
207 with the timing of governmental control measures (Fig. 6 BE), and k showed a marginal
208 significant negative correlation ($r=-0.3$, $p=0.0925$, Spearman correlation), while the
209 increasing rate or the maximum of infected number do not show strong correlation
210 ($r=0.02$, $p=0.91$, Spearman correlation) with the control measures' timing (Fig. 6
211 ACDF). China released the earliest national control measures to prevent the spread of
212 COVID-19 (on Jan. 23) and its t_0 is the lowest (Figure 5, red circle). We also noticed
213 that the timing of governmental emergency control measure is significantly earlier than
214 SSP (Fig. 6B) ($t=2.99$, $p=0.0043$, two-tailed test) in time, which indicates that most of
215 the selected countries have taken measures at the early phase of the outbreak.

216

217

218 **Discussion**

219 We compared the relationship between growth characteristics of infected and cured case
220 of 30 provinces in mainland China based on the data from Jan 20 to Mar 29, 2020,
221 which are positively correlated (Fig. 2 BC). Further, we explained the data from 31
222 countries using the same model (See Methods). We predicted their increasing rate (k)
223 and semi-saturation period (t_0) of cure case based on the knowledge of data from China.
224 It is worth mentioning that there is a strong correlation between these parameters and the
225 timing of governmental policy on COVID-19.

226

227 **Comparison with previous work**

228 Different from models like SIR or SEIR applied in COVID-19 (Li et al., 2020; Wang et
229 al., 2020; Tian et al., 2020), our model is relatively simple, but robust. This work is an
230 extension of our previous work (Han et al., 2020), we have verified that our model well
231 explains the data in various geographic space of mainland China, as well as provided
232 robust results with different lengths of time series (between 30 and 40 days).
233 This model is able to capture the features of macroscopic dynamic of the epidemics
234 worldwide ($R^2 > 0.95$) (Fig. 4) and we quantitatively investigated the minimum data
235 length to produce stable output (Fig. 3). By now, the domestic infected cases in China is
236 very limited, which is consistent with our prediction results. The cumulative number of
237 infected and cured cases are almost saturated, and this means the spread of the virus has
238 been effectively controlled, thus we believe that the parameters estimated in this work
239 for Chinese provinces are reliable (Fig. 1A-C). The characteristics of two curves can
240 depict the dynamic macroscopic features of the epidemic situation. Moreover, we
241 extended this model to the data in each of these 31 countries (Fig 4 A-C), and found the
242 sigmoid model could also fit the data very well ($R^2 > 0.95$) (Fig 4 A-C).

243

244 **Relationship among model parameters and the prediction of the cured cases**

245 We noticed that semi-saturation period of infected and cured cases in China showed a

246 positive correlation (p -value = 0.0001). This phenomenon obeys the common sense,
247 since the cure is always later than infection when a new virus comes. Although the
248 positive correlation between increasing rate of infected and cured cases is significant
249 (p -value = 0.0359), we noticed the correlation is much lower than that of semi-saturation
250 period. This result is reasonable, since the reasons cause the ascending increasing rate of
251 infected case are totally different from that of cured case. So that correlation may not be
252 that strong. As we compared the k and t_0 in any specific case no matter in mainland
253 China or worldwide region (Fig. 5), we found significant negative correlations. This is
254 consistent with our initial work (Han et al., 2020). For negative correlation of k and t_0 in
255 cured cases, it could also be explained as when the increasing rate (k) of the cured case
256 is larger, it will be faster to cure most patients.

257

258 **Suggestion for governments around the world on the prevention and control of** 259 **COVID-19**

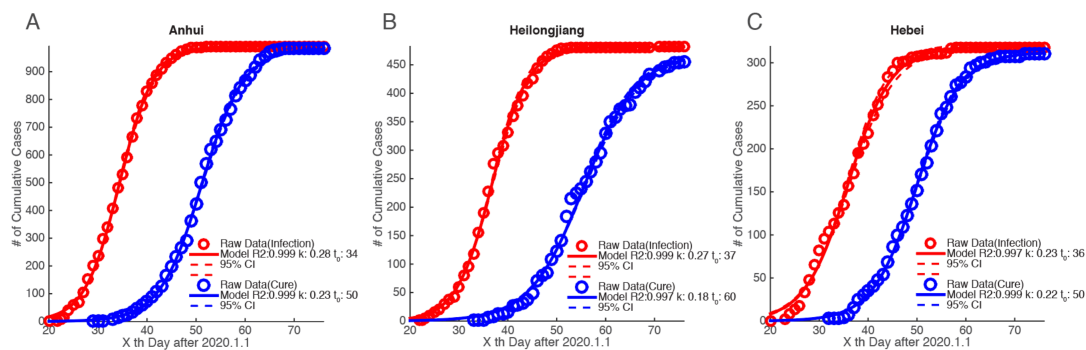
260 More importantly, we found there is a strong correlation between the timing of
261 governmental control measures for COVID-19 in 31 countries and the semi-saturation
262 period estimated (Fig 6 BE). This indicates the early implementation of the
263 government's prevention and control policy effectively shortened the turning point of
264 the epidemic. Taken China as an example, when the COVID-19 outbreak in Wuhan, the
265 strict isolation policy was announcement on Jan. 23, and the inflection point there was
266 around Feb 9, 2020, the time lag was 17 days. Another result showed that the time of
267 governmental policy is significantly shorter than the inflection time point of infection,
268 which is also a strong reference for governments of all countries to take control
269 measures as early as possible.

270

271 **Reference**

- 272 Sina, https://news.sina.cn/zt_d/yiqing0121
- 273 WHO_a, <https://www.who.int/docs/default-source/coronaviruse/situation-reports>
- 274 CCDC_a Prevention, C. C. f. D. C. a. Prevention and control measures of COVID-19,
275 <<http://www.nhc.gov.cn/jkj/s3577/202002/a5d6f7b8c48c451c87dba14889b30147/files/3514cb996ae24e2faf65953b4ecd0df4.pdf>> (2020).
276
- 277 CCDC_b http://www.nhc.gov.cn/xcs/yqfkdt/gzbd_index.shtml
- 278 Li R, Pei S, Chen B, Song Y, Zhang T, Yang W, Shaman J (2020) Substantial
279 undocumented infection facilitates the rapid dissemination of novel coronavirus
280 (SARS-CoV2). *Science*.
- 281 Zhou P et al. (2020) A pneumonia outbreak associated with a new coronavirus of
282 probable bat origin. *Nature*.
- 283 Wang D, Hu B, Hu C, Zhu F, Liu X, Zhang J, Wang B, Xiang H, Cheng Z, Xiong Y,
284 Zhao Y, Li Y, Wang X, Peng Z (2020) Clinical Characteristics of 138 Hospitalized
285 Patients With 2019 Novel Coronavirus-Infected Pneumonia in Wuhan, China. *JAMA*.
- 286 Li Q et al. (2020) Early Transmission Dynamics in Wuhan, China, of Novel
287 Coronavirus-Infected Pneumonia. *N Engl J Med*.
- 288 Zhu N, Zhang D, Wang W, Li X, Yang B, Song J, Zhao X, Huang B, Shi W, Lu R, Niu P,
289 Zhan F, Ma X, Wang D, Xu W, Wu G, Gao GF, Tan W, China Novel Coronavirus I,
290 Research T (2020) A Novel Coronavirus from Patients with Pneumonia in China, 2019.
291 *N Engl J Med*.
- 292 Hui DS, E IA, Madani TA, Ntoumi F, Kock R, Dar O, Ippolito G, McHugh TD, Memish
293 ZA, Drosten C, Zumla A, Petersen E (2020) The continuing 2019-nCoV epidemic threat
294 of novel coronaviruses to global health - The latest 2019 novel coronavirus outbreak in
295 Wuhan, China. *Int J Infect Dis* 91:264-266.
- 296 Choi SC, Ki M (2020) Estimating the reproductive number and the outbreak size of
297 Novel Coronavirus disease (COVID-19) using mathematical model in Republic of
298 Korea. *Epidemiol Health*:e2020011.
- 299 Ki M, nCo VT (2020) Epidemiologic characteristics of early cases with 2019 novel
300 coronavirus (2019-nCoV) disease in Republic of Korea. *Epidemiol Health*:e2020007.
- 301 Shim E, Tariq A, Choi W, Lee Y, Chowell G (2020) Transmission potential and severity
302 of COVID-19 in South Korea. *Int J Infect Dis*.
- 303 Abdi M (2020) Coronavirus disease 2019 (COVID-19) outbreak in Iran; actions and
304 problems. *Infect Control Hosp Epidemiol*:1-5.
- 305 Tuite AR, Bogoch, II, Sherbo R, Watts A, Fisman D, Khan K (2020) Estimation of
306 Coronavirus Disease 2019 (COVID-19) Burden and Potential for International
307 Dissemination of Infection From Iran. *Ann Intern Med*.
- 308 Zhuang Z, Zhao S, Lin Q, Cao P, Lou Y, Yang L, He D (2020) Preliminary estimation of
309 the novel coronavirus disease (COVID-19) cases in Iran: A modelling analysis based on

310 overseas cases and air travel data. *Int J Infect Dis*.
311 Livingston E, Bucher K (2020) Coronavirus Disease 2019 (COVID-19) in Italy. *JAMA*.
312 Rosenbaum L (2020) Facing Covid-19 in Italy - Ethics, Logistics, and Therapeutics on
313 the Epidemic's Front Line. *N Engl J Med*.
314 Spina S, Marrazzo F, Migliari M, Stucchi R, Sforza A, Fumagalli R (2020) The response
315 of Milan's Emergency Medical System to the COVID-19 outbreak in Italy. *Lancet*
316 395:e49-e50.
317 Han C, Liu Y, Yang S (2020) Intrinsic growth rules of patients infected, dead and cured
318 with 2019 novel coronavirus in mainland China. medRxiv:2020.2002.2023.20024802.
319 Zhou P et al. (2020) A pneumonia outbreak associated with a new coronavirus of
320 probable bat origin. *Nature*.
321 Huang C et al. (2020) Clinical features of patients infected with 2019 novel coronavirus
322 in Wuhan, China. *Lancet*.
323 Li R, Pei S, Chen B, Song Y, Zhang T, Yang W, Shaman J (2020) Substantial
324 undocumented infection facilitates the rapid dissemination of novel coronavirus
325 (SARS-CoV2). *Science*.
326 Wang H, Wang Z, Dong Y, Chang R, Xu C, Yu X, Zhang S, Tsamlag L, Shang M,
327 Huang J, Wang Y, Xu G, Shen T, Zhang X, Cai Y (2020) Phase-adjusted estimation of
328 the number of Coronavirus Disease 2019 cases in Wuhan, China. *Cell Discov* 6:10.
329 H. Tian et al., *Science* 10.1126/science.abb6105 (2020).
330 Azman AS, Luquero FJ (2020) From China: hope and lessons for COVID-19 control.
331 *Lancet Infect Dis*.
332
333
334
335

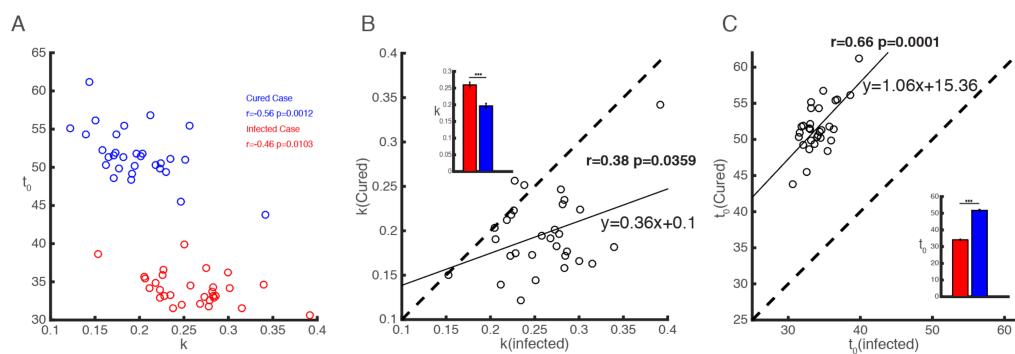


336

337 Figure 1 Example provinces for the time series of infected and cured cases with
 338 corresponding fitted curve in mainland China

339 A-C shows three example cases in three provinces (Anhui, Heilongjiang and Hebei). The horizontal axis
 340 in each panel denotes the x^{th} day after January 1, 2020. The vertical axis in each panel is the cumulative
 341 number of infected (red circles) and cured case (blue circles). The red and blue line are the fitting
 342 curves by the sigmoid model, and the dashed red and blue curves mark the 95% confidence interval of the fitting
 343 curves.

344



345

346 Figure 2 Relationship between intrinsic rules for infected and cured case in mainland
 347 China

348 Panel A shows the scatter plot of increasing rate (k) and semi-saturation period (t_0) for infected (red circles)
 349 and cured case (blue circles).

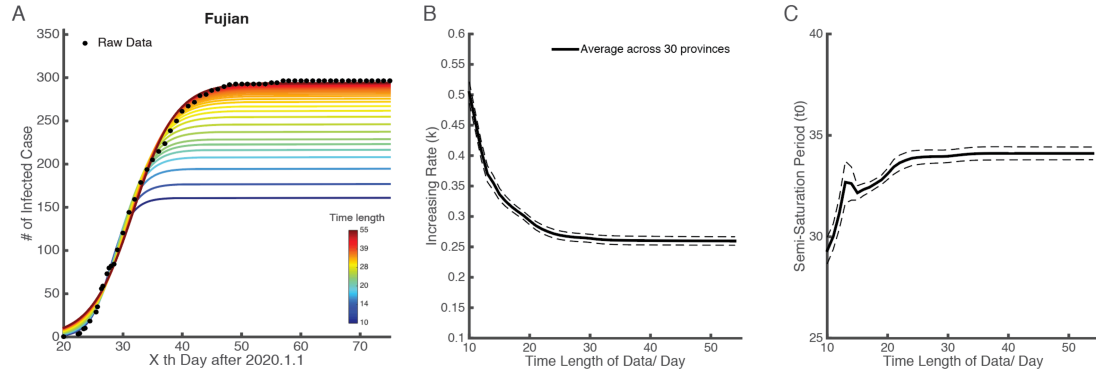
350 Panel B is the scatter plot of increasing rate (k) of infected and cured case (black circles), the dashed line
 351 is the diagonal line of the coordinate system (the same for Panel C). The relation between k of infected
 352 and cured cases is modeled with a linear function, which is shown as the black curve. The bar graph
 353 shown in northwest corner demonstrates the difference between k of infected and cured cases.

354 Panel C shows the scatter plot of semi-saturation period (t_0). The black curve is the linear function
 355 estimated based on the relation between infected and cured case. And the bar graph shown in southeast
 356 corner demonstrates difference between t_0 of infected and cured cases.

357

358

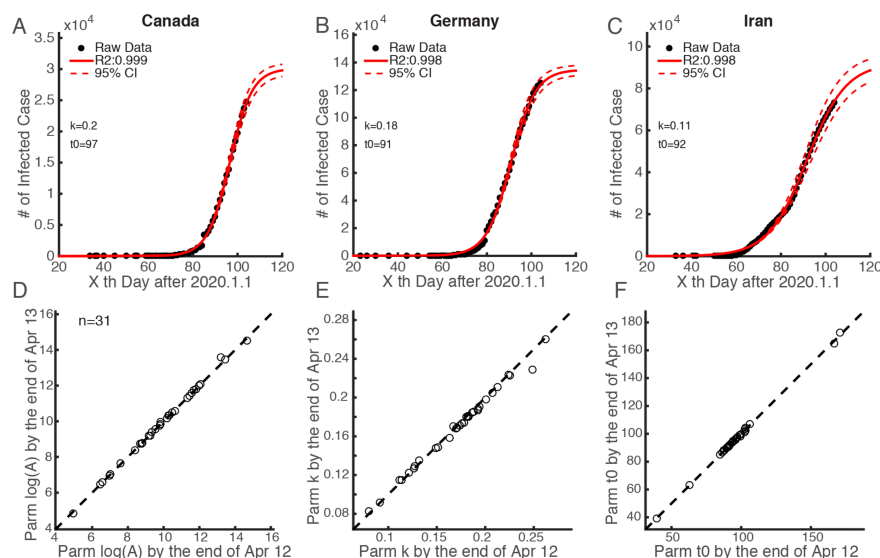
359



360
361
362
363
364
365
366
367
368
369
370
371

Figure 3 Time stability of logistic model in infected case of Chinese mainland

Panel A is an example case in Fujian province. The horizontal axis in each panel denotes the xth day after January 1, 2020. The vertical axis in each panel is the cumulative number of infected (black dots). The lines with different colors are the fitting curve by the logistic model using data with different time length as shown in color bar in the southeast corner. Panel B and C illustrates how estimated parameters (k and t₀) changes with increase of the data's time length. The black curve shows the average of increasing rate (k) across 30 provinces in mainland China changing with time length of data and the dashed line marks its standard error.

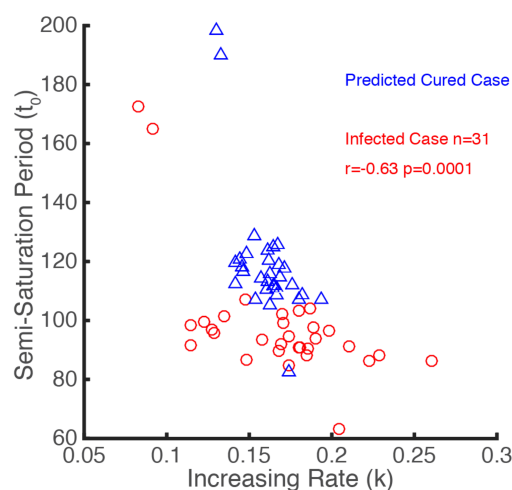


372

373 Figure 4 Example countries for the time series of infected cases with corresponding
 374 fitted curve around world and its temporal stability

375 Panel A-C show infected cases and their fitted curves of Australia, Italy and Iran. The horizontal axis is
 376 the x^{th} day after Jan 1, 2020. The vertical axis denotes the number of infected cases in corresponding
 377 country. The black dots in each panel are raw data of the cumulative number of infected cases. The red
 378 line is the fitted curves by our descriptive model. The dashed red lines mark the 95% confidence interval
 379 of the fitted curves. Panel D-F show the difference of parameters estimated from relative longer (by the
 380 end of Jun 13) and shorter (by the end of Apr 12) time series data, each dot denotes for one country.

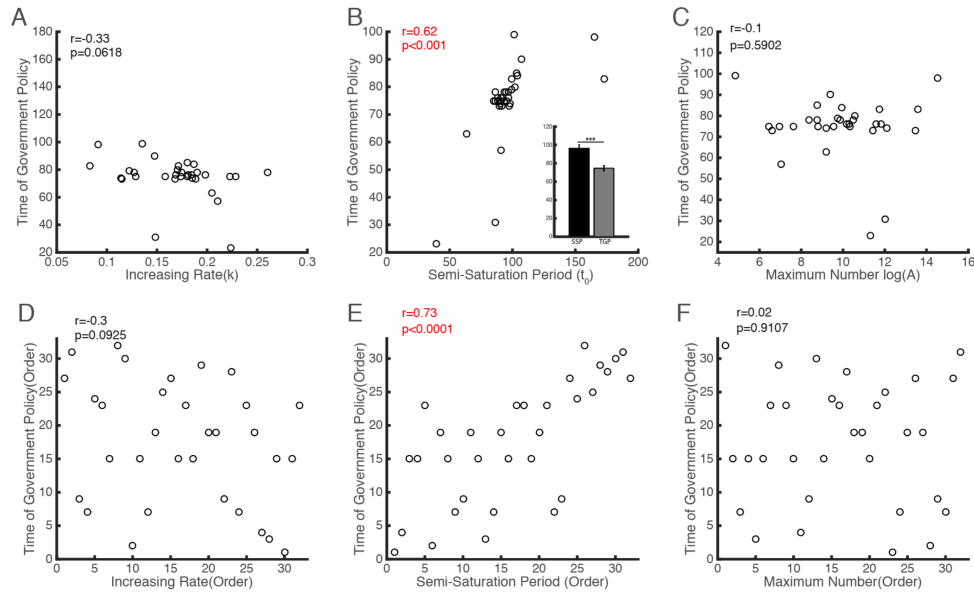
381



382

383 Figure 5 Prediction for intrinsic rule of cured case around world based on Chinese
 384 enlightenment

385 The scatter plot of increasing rate (k) and semi-saturation period (t_0) for infected cases is showed in red
 386 circles. Based on the linear model shown in Fig 2BC, a prediction of k and t_0 for cured case is plotted as
 387 blue circles.



388

389 Figure 6 Relationship between time of government policy from each countries and
390 parameters estimated from the model

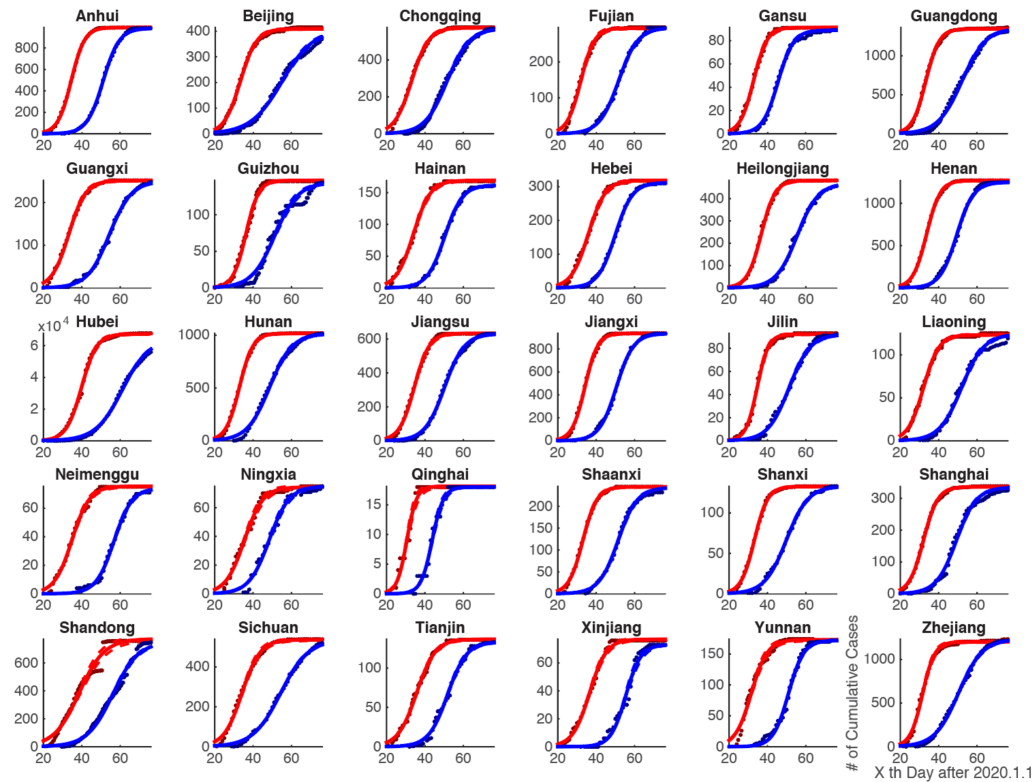
391 Panel A-C show the scatter plot of the time of government measures and the model parameters of infected
392 case (k, t_0 and A, respectively). In the southeast corner of Panel B, a bar graph was shown to indicate the
393 difference between timing of government measures (grey bar) and semi-saturation period (SAP, black
394 bar).

395 D-F shows the same data of A-C but in the order form. The red circle in six panels denotes China.

396

397

398

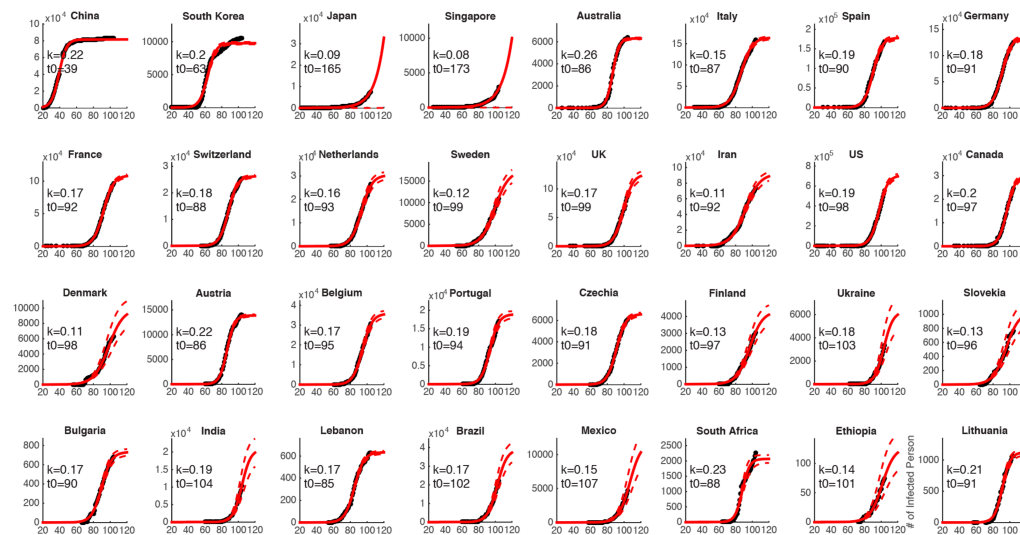


399

400 **Supplement Figure S1 Intrinsic growth rules of patients infected with 2019 novel**
401 **coronavirus in all provinces of mainland China**

402 The deep red and blue dots in each panel are raw data of the cumulative infected and
403 cured cases. The red and blue line is the corresponding fitted curves by our descriptive
404 model.

405



406

407

Supplement Figure S2 Intrinsic growth rules of patients infected with 2019 novel coronavirus in 31 countries around world

408

409

The black dots in each panel are raw data of the cumulative infected cases. The red line is the fitted curve by our descriptive model.

410

411

412

413