

Discovery of plasma protein biomarkers related to Alzheimer's disease, sex and APOE genotype.

Scott B. Laffoon^{1,2,3}, James D. Doecke⁴, Anne M. Roberts^{1,3}, Jennifer A. Vance⁵, Benjamin D. Reeves², Kelly K. Pertile¹, Rebecca L. Rumble¹, Chris J. Fowler¹, Brett Trounson¹, David Ames¹, Ralph Martins^{3,6,7}, Ashley I. Bush^{1,3}, Colin L. Masters^{1,3}, Paul A. Grieco², Edward A. Dratz², Blaine R. Roberts^{1,2,3,8}*

¹ Florey Institute of Neuroscience and Mental Health and The University of Melbourne Dementia Research Centre, Parkville, Victoria 3010 Australia

² Department of Chemistry and Biochemistry, Montana State University, Bozeman, MT 59715 USA

³ Cooperative Research Centre for Mental Health, Carlton South, VIC, Australia.

⁴ Australian e-Health Research Centre, CSIRO and Cooperative Research Centre of Mental health, Royal Brisbane and Women's Hospital, Brisbane, QLD, 4029, Australia

⁵AIT Bioscience, 7840 Innovation Blvd., Indianapolis, IN 46278, USA

⁶School of Medical Sciences, Edith Cowan University, Joondalup, WA, Australia.

⁷Department of Biomedical Sciences, Macquarie University, Norht Ryde, NSW, Australia.

⁸Department of Biochemistry, Department of Neurology, Emory School of Medicine, Atlanta, GA 30322 USA

*Corresponding Author: Blaine R. Roberts

Department of Biochemistry

Department of Neurology

Emory University School of Medicine

4001 Rollins Research building

Atlanta, GA 30322 USA

E-mail: blaine.roberts@emory.edu

Ph: +(404) 727-6007

Authors email addresses;

1

2 **Abstract (242 words)**

3 The Australian Imaging and Biomarker Lifestyle (AIBL) study of aging is designed to aid the
4 discovery of biomarkers. The current study aimed to discover differentially expressed plasma
5 proteins that could yield a blood-based screening tool for Alzheimer's disease. To search for
6 biomarkers and elucidate mechanisms of AD, we immuno-depleted the most abundant plasma
7 proteins and pre-fractionated the remaining proteins by HPLC, prior to two-dimensional gel
8 electrophoresis. The relative levels of approximately 3,400 protein species resolved on the 2D
9 gels were compared using in-gel differential analysis with spectrally resolved fluorescent protein
10 detection dyes (ZdyesTM). Here we report on analysis of pooled plasma samples from an initial
11 screen of a sex-matched cohort of 72 probable AD patients and 72 healthy controls from the
12 baseline time point of AIBL. We report significant changes in variants of apolipoprotein E,
13 haptoglobin, α 1 anti-trypsin, inter- α trypsin inhibitor, histidine-rich glycoprotein, and a protein
14 of unknown identity. α 1 anti-trypsin and α 1 anti-chymotrypsin demonstrated plasma
15 concentrations that were dependent on *APOE* ϵ 4 allele dose. Our analysis also identified an
16 association with the level of Vitamin D binding protein fragments and complement factor I with
17 sex. We then conducted a validation study on individual samples using a targeted LC-MS/MS
18 assay. This study indicates that a peripheral protein signature has potential to aid in the
19 characterization of AD. We also found significant associations of protein levels with *APOE*
20 genotype, indicating that differences in genotype influence the circulating abundances of proteins
21 other than ApoE.

22 **Keywords:** Proteomics, 2D-PAGE, Alzheimer's disease, biomarkers, plasma, *APOE*, Zdye,
23 blood

1 **Introduction (681 words)**

2 Alzheimer’s disease (AD) is the most common cause of dementia, accounting for 60-80%
3 of cases. It is estimated that there are over 40 million people suffering from AD dementia, with
4 the number expected to rise to over 100 million by the year 2050 (1). More than 75% of those
5 afflicted with dementia remain undiagnosed (2). While a small portion of AD cases are familial,
6 95% of AD cases are late onset or “sporadic”, being of unknown and possibly heterogeneous
7 etiology (3).

8 Currently, the diagnosis of AD is made by clinical assessments of cognitive impairment,
9 with the exclusion of diagnosis for other dementias. With the addition of brain imaging
10 techniques, the accuracy of diagnosis is approximately 90% (4). The gold standard for the pre-
11 mortem diagnosis of AD involves positron emission tomography (PET) imaging of amyloid load
12 in the brain (5). Due to the expense, low availability, and the technically challenging nature of
13 PET imaging it is not suitable for population screening and there is a large research effort to
14 develop a peripheral screening tool that can be used to detect those at risk of developing AD.
15 Investigations of cerebrospinal fluid (CSF) biomarkers are proving to be effective for early
16 detection of AD risk(6,7). However, the collection of CSF is not a widespread practice, as it
17 requires an invasive lumbar puncture, as compared with much less-invasive blood tests. This
18 situation has led to an intensive search for blood based biomarkers that may reflect changes in
19 AD that are systemic, or due to either the disruption of the blood-brain barrier (BBB) (8,9) or the
20 trafficking of proteins between the brain and blood(10). While AD is conceptually a brain
21 disease, there is evidence of altered protein expression in the periphery. This has been shown in
22 several avenues of research, including AD related morphological, chemical and proteomic
23 changes in red-blood cells (11-14), alterations of motility in white blood cells and changes in

1 membrane fluidity in leukocytes (15-17), as well as reports of plasma biomarker panels (18-25).
2 Previous proteomics studies have detected significant changes in proteins found in plasma,
3 serum and CSF in AD. However, none of these studies have yielded accurate, specific and
4 reproducible diagnostic markers for AD (26-29). This remains a significant challenge in the
5 field, but there are indications that a blood–biomarker is possible as indicated by recent reports
6 measuring the amyloid beta 40/42 ratio and tau (30-34).

7 Global discovery investigations of CSF and plasma proteins face an imposing dynamic
8 range of analyte concentrations, spanning approximately 10 orders of magnitude (35,36),
9 whereas the various platforms for proteomic analysis of intact proteins are limited to the most
10 abundant 3-5 orders of magnitude. With the immense heterogeneity of the immunoglobulins,
11 plasma comprises many tens of thousands of protein species, of which approximately 50% by
12 weight is serum albumin (37) and 92% of the plasma protein is composed of 14 of the most
13 abundant proteins (38). Strategies that target the abundant species for removal are designed to
14 bring less abundant proteins into the three to five logs of analytical purview. Reverse phase high-
15 pressure liquid chromatography (RP-HPLC) provides a means for fractionating these species into
16 simpler subsets of proteins. The study presented here combines immuno-depletion of abundant
17 proteins from plasma, followed by RP-HPLC fractionation, and subsequent two-dimensional gel
18 electrophoresis (2DGE). The advantage that 2DGE has as a proteomic platform is its ability to
19 detect changes in a very wide range of post translationally modified protein isoforms. We also
20 employed a pooling strategy to incorporate a larger population in the study to reduce effects of
21 individual variability and to emphasize changes that are related to disease (39,40). Using recently
22 developed Zdyes (41,42) for covalent labeling and differential in-gel comparison of AD and
23 control plasma proteins, we conducted a proteomic screen of protein isoforms in samples obtain

1 from the Australian imaging and biomarker lifestyle study of ageing (AIBL). We have confirmed
2 several previously observed findings (23,24) and report additional plasma protein signatures of
3 AD that vary with APOE ϵ 4 gene dose and sex. Finally, we attempt to validate the discovered
4 targets in individuals on a mass spectrometry based platform.

5 **Methods and Materials (964 words)**

6 **Diagnosis of subjects.** The Australian Imaging and Biomarker, Lifestyle (AIBL) study
7 is a dual-site, longitudinal cohort study that integrates neuroimaging, biomarker,
8 neuropsychometric and lifestyle(43). The cohort was divided into three groups; cognitively
9 healthy individuals (healthy controls, HC), and participants diagnosed with AD as defined by
10 NINCDS-ADRDA criteria (44) and confirmed by amyloid PET. *APOE* genotypes were
11 determined as previously described (Hixson and Vernier, 1990). Participant recruitment, cohort
12 design and clinical assessments were previously described (Ellis et al., 2009). Due to constraints
13 in sample throughput we pooled samples from each diagnostic category, the demographic and
14 biometric compositions of these pooled group of samples are shown in Table 1. The
15 demographics and biometric composition of the samples used for the validation of the markers
16 discovered in the pooled samples are provided in Table 3. Ethical approval for this study was
17 provided by The University of Melbourne Human Research Ethics Committee.

18 **Plasma collection.** Plasma was isolated from 15 mL of whole blood collected in two
19 Sarstedt s-monovette ethylenediaminetetraacetic acid (EDTA) K3E (01.1605.008) 7.5 mL tubes
20 with prostaglandin E1 (PGE1) (Sapphire Biosciences, 33.3 ng/mL) pre-added to the tube (stored
21 at 4°C prior to use). After whole blood was collected from overnight fasted participants by
22 venipuncture it was inverted several times and incubated on a laboratory orbital shaker for
23 approximately 15 minutes at room temperature prior to plasma preparation. The whole blood

1 was then combined into 15 mL polypropylene tubes and spun at 200 x g at 20°C for 10 minutes
2 with no brake. Supernatant (platelet rich plasma) was carefully transferred to a fresh 15 mL
3 tube, leaving a 5 mm margin at the interface to ensure the buffy coat was not disturbed. The
4 platelet rich plasma was spun at 800 g at 20°C for 15 minutes with the brake on. The platelet
5 depleted plasma was then aliquoted into 1 mL Nunc cryobank polypropylene tubes (Thermo
6 Scientific, USA) in 0.25 mL aliquots and transferred immediately to a rack on dry ice and
7 transferred to liquid nitrogen vapor tanks (-178°C) until required for the assays.

8 **Immuno-depletion and fractionation.** The plasma from 12 individuals, selected to be
9 pooled together based on sex and disease status (Figure 1), were thawed on ice for 1 hour. The
10 plasma was centrifuged at 16,500 x g for 2 minutes and 50 µl from each individual was mixed
11 together to generate the final pooled samples. Three independent pools of EDTA plasma were
12 prepared from 12 subjects for each of male AD (mAD), female AD (fAD), male healthy control
13 (mHC) and female healthy control (fHC) groups. Pooled plasma samples were immuno-depleted,
14 using a multiple affinity removal system (MARS) 14 column according to manufacturers'
15 instructions (MARS-14, 4.6 x 100mm, Agilent), as described in the supplementary material. The
16 flow-through, low abundance proteins were collected in 15 mL conical vials containing 0.82 g
17 urea (SigmaUltra) and 23 µl glacial acetic acid (EMD Chemicals), for a final concentration of
18 6M urea and 1% acetic acid. After complete mixing, the low abundant protein fractions were
19 frozen and stored at -80° C until reverse-phase (RP) fractionation. The low abundant material
20 was further fractionated into six sub-fractions, using a C18 column (Agilent high-recovery
21 macro-porous 4.6 mm x 50 mm) operated at 80 °C (see supplemental material for details).
22 Fractions were lyophilized and re-suspended for labeling, with two spectrally resolved
23 fluorescent dyes (Zdye LLC, green emitting BDR-I-227 and blue emitting JAV-I-187). Both

1 fluorescently labelled samples were mixed and first resolved by isoelectric focusing (IEF) on 24
2 cm pH 3-11 Immobiline™ Drystrips (GE Healthcare) and then electrophoresed on 11% SDS-
3 PAGE gels in the second dimension. Gels were scanned for fluorescence, using a Typhoon™
4 Trio scanner (GE Healthcare), and false-color images were produced with ImageQuant software
5 (GE Healthcare). Gel image files were imported into Progenesis SameSpots software (Nonlinear
6 Dynamics) for processing, alignment and differential analysis of the relative amounts of protein
7 species in AD and control pools, after normalizing spot volume intensities by the total spot
8 volume intensity in each image

9
10 **Figure 1.** Study design and experimental workflow. (1) Shows how the control and Alzheimer's
11 disease plasma was pooled into sex specific and disease specific groups. Each pooled group was
12 generated from 12 individuals. (2) The pooled plasma was then depleted of the 14 most abundant
13 proteins using the multiple affinity removal system (MARS14, Agilent Tech.). The low
14 abundance proteins were further fractionated using reverse phase chromatography (3) to generate
15 6 fractions (4) for 2D differential gel electrophoresis of proteins labeled with Zdyes™(4).

16 Spot volumes were considered significantly changed if there was greater than a 1.3-fold
17 change between groups and a $p < 0.05$ with a false discovery rate of 0.05 calculated as described
18 in Storey et al. (45), when comparing the six pools (N=12 per pool) of AD subjects with six
19 pools of healthy controls (HC). Additionally, protein spots were compared within male and
20 female pools between AD and HC groups (three pools each for each sex). When comparing
21 differences between the sexes, a cut-off of greater than 1.7-fold change in protein levels was
22 applied. Spearman's rank correlation and linear regression was used to investigate the
23 relationship between the number of APOE alleles and ApoE protein quantity.

1 **Identification of proteins-of-interest.** To identify changing protein variants, spots-of-
2 interest were excised manually from analytical or preparative gels of fractionated proteins, for in-
3 gel digestion with proteomics grade porcine trypsin (Sigma-Aldrich, Castle Hill, Australia),
4 following previously published methods for in-gel digestion (46). Mass spectrometry data
5 [obtained as described in the supplementary material] were used to search the Swiss-Prot *Homo*
6 *sapiens* database, using MASCOT version 2.4.1 (Matrix Science). Fixed modification of
7 carbamidomethylation of cysteine, and variable modifications including oxidation of methionine,
8 deamidation of asparagine and glutamine, and a single missed cleavage were allowed for the
9 protein searches, using 2+ and 3+ peptide charge states.

10 **Selected reaction monitoring QQQ mass spectrometry.** Peptides were selected and
11 synthesized, with heavy isotope labeling, for 76 protein targets by MRM-Proteomics (BAK76-
12 kit, Canada). Samples were processed using the manufacturer's protocol (additional details in
13 supplemental materials). The liquid chromatography mass spectrometry was conducted on with
14 a 1290 UHPLC coupled to a 6495 QQQ mass spectrometer (Agilent Technologies, Mulgrave,
15 VIC).

16 Statistical analyses were conducted using: Progenesis QI (Waters, UK) for the 2D gel
17 data; GraphPad Prism v 8.0 for Mac OS X (GraphPad Software, USA) for the ROC; t-test
18 analysis: One-way ANOVA with Sidak correction of multiple comparisons and Chi-squared test.
19 A p-value < 0.05 was considered significant.

20 **Results (1518 words)**

21 Demographic details are listed in Table 1. The AD cohort was significantly older by 9.8 years
22 (AD group 79.6 ± 3.1 years, HC group 69.8 ± 3.2 years, $p = 0.0001$) and the AD population was
23 significantly enriched in the APOE $\epsilon 4$ allele (40%, AD; 13%, HC; $p = 0.0001$) as anticipated

1 (47). Body mass index (BMI) data were available for 54/72 AD subjects and 60/72 HC subjects.
2 Using the available data showed a trend ($p = 0.06$) of somewhat lower BMI in AD pools ($24.9 \pm$
3 1.4 kg/m^2) than HC pools ($26.5 \pm 1.1 \text{ kg/m}^2$). All of the controls had an amyloid PET scan
4 confirming the lack of significant brain amyloid accumulation and approximately half of 56/72
5 of the AD cases had a corresponding PET, which confirmed the AD diagnosis. An extensive
6 analysis of the PET data collected on this cohort can be found in Pike et al. (2007) (48).
7 *Discovery 2D gel investigation of human plasma.* The immuno-depletion and RP-HPLC
8 fractionation strategy produced six fractions (F1-6) of proteins for comparison by 2DGE (Figure
9 1). Representative analytical gel images of each of the six RP fractions are shown in Figure 2.
10 Approximately 3,400 unique protein species were analyzed by this method after reducing the
11 total spot count by 10%, to correct for proteins estimated that eluted in more than one fraction.
12 The inclusion of RP-HPLC fractionation resulted in a roughly linear 6x increase in the quantity
13 of protein spots measured. The increase was attributed to resolution of proteins that co-migrate
14 on 2DGE which have different hydrophobic characters and are thus separated by RP-HPLC,
15 reducing interference in the analysis of gels. In addition, RP-HPLC enriches proteins, allowing
16 lower abundance species to be appear with stronger fluorescent signals on the 2D gels.

17
18 **Figure 2.** Representative 2D gel images from the six RP fractions. The arrows indicate the
19 protein spots with abundance changes in AD pools compared to HC, as discussed in the Results
20 and Discussion sections.

21
22 Spots that met the inclusion criteria for significant differences (>1.3 fold, adjusted p -
23 value <0.05), as described above, are indicated by the arrows in Figure 2 and listed in Table 2.

1 Isoform variants, subunits or cleavage products of eight proteins that discriminated AD from
2 control, according to the inclusion criteria, were identified: zinc α 2-glycoprotein (ZAG),
3 histidine-rich glycoprotein (HRG) fragment, haptoglobin (Hpt), vitamin D binding protein
4 (VDBP), complement factor I (CFI), inter- α trypsin inhibitor (ITHI), α -1 anti-trypsin (α 1AT) and
5 apolipoprotein E (ApoE). One significant spot in fraction #1 (F1) was unidentified. Features of
6 proteins that showed significant abundance changes are as follows:

7 *Zinc α 2-glycoprotein.* Two putative glycoforms of zinc α 2-glycoprotein (ZAG, Figure 2
8 F1, arrows a and b) showed significant increase in abundance in the AD pools (1.9-fold, $p < 0.05$
9 and 1.5-fold, $p < 0.05$ respectively, Table 2). An adjacent isoform (Figure 2 F1, arrow c) also
10 showed a trend towards being increased in AD pools although it did not quite meet statistical
11 significance (1.3-fold, $p = 0.06$).

12 *Haptoglobin.* Haptoglobin (Hpt) is an abundant, acute phase response (APR) polymeric
13 glycoprotein that is synthesized in the liver and is composed of varied combinations of four
14 disulfide linked chains (two α^1 chains of ~8.9 kDa that differ by a single amino-acid substitution,
15 α^2 chain ~16 kDa, and β chain ~45 kDa). Normal human populations commonly possess
16 quaternary structural variations and heterogeneous stoichiometry of disulfide-linked Hpt chains
17 (49), potentially yielding proteins composed of identical chains with differing pIs. In the current
18 study the disulfide bridges were intact in the first 2D gel separation dimension and then reduced
19 after isoelectric focusing, so the subunits in the second dimension had the same pI patterns as the
20 intact Hpt complexes. To avoid issues arising from mis-matching of heterogeneously focused
21 spots in the comparison between pools, we quantified each of the Hpt spot-trains at 8.9 kDa, 16
22 kDa and 45 kDa (Figure 2 F2, arrows d, e, and f respectively) as the summed value of the
23 respective constituent isoforms. Two haptoglobin (Hpt) chains (β chain ~45 kDa - Figure 2 F2,

1 arrow d and α^1 chain ~8.9 kDa - Figure 2 F2, arrow e) were significantly higher in AD pools
2 (2.0-fold, $p < 0.01$ and 2.4-fold, $p < 0.02$ respectively, Table 2). No significant difference was
3 found in Hpt α^2 chain (Figure 2 F2, arrow f). False-color image overlays of the F2 gels,
4 qualitatively representing changes in Hpt species, are shown in Figure 3, where the ovals in the
5 upper right image indicate the three different subunit spot trains.

6
7 **Figure 3.** False-color image overlays of F2 two-color multiplex gels prior to spot-matching
8 alignment. Three subunit chains of Hpt are outlined in ovals in the upper right image. The AD
9 pools are represented by green in the upper three images and by red in the lower images,
10 reflecting the dye labeling reversals. Yellow represents approximately equal contribution of
11 intensity from AD and control proteins.

12
13 *Inter- α trypsin inhibitor.* Two cleavage products of inter- α trypsin inhibitor (ITIH) heavy
14 chain were significantly higher in AD pools. A 12-15 kDa C-terminal cleavage product (Figure 2
15 F3, arrow g) and an approximately 40 kDa N-terminal cleavage product (Figure 2 F4, arrow h)
16 were both increased 1.3 fold in AD pools ($p < 0.05$ and $p < 0.02$ respectively, Table 2).

17 *Apolipoprotein E.* The most chemically basic protein spot of the apolipoprotein E (ApoE)
18 spot train (Figure 2 F5, arrow i) was significantly higher in the AD pools (1.5 fold, $p < 0.02$,
19 Table 2). The 34 kDa ApoE spot train results from the superposition of the protein products of
20 the APOE ϵ_2 , ϵ_3 and ϵ_4 alleles carried by the individuals contributing to the pools. Each of the
21 alleles produces three clearly visible protein spot clusters, likely due to heterogeneous
22 deamidations and glycosylations (50). The substitution of an arginine for a cysteine in ApoE ϵ_4
23 (C112R), results in a shift of its isoelectric point (pI) toward the cathode, basic (right shift)

1 relative to the ApoE $\epsilon 3$ position. Additionally, plasma proteins are subject to non-enzymatic
2 deamidation *in vivo*, a process that adds negative charges (51), creating features of the horizontal
3 spot trains by shifting species discretely toward the anode, leftward on gels. The partially
4 overlapping superposition of ApoE $\epsilon 3$ with $\epsilon 4$ variants appeared as four clusters of spots in most
5 of the pooled samples, with the most chemically basic cluster comprising only ApoE $\epsilon 4$ variants.
6 Therefore, the most basic cluster of ApoE spots provides a protein isoform proxy for the relative
7 amounts of APOE $\epsilon 4$ allele within the pools. Figure 4A shows strong Pearson correlation ($R^2 =$
8 0.82, $p < 0.0001$) of the normalized spot intensity of the most basic ApoE “ $\epsilon 4$ proxy” variant,
9 with the averaged gene dosage of the APOE $\epsilon 4$ allele in the pools of this study.

10 F6 gels exhibited a series (Figure 2 F6, arrow j) comprising six to seven variants of the
11 same apparent molecular weight (~35 kDa) as the F5 ApoE series. However, none of the F6
12 ApoE variants significantly correlated with APOE genotype.

13 *α -1 Anti-trypsin.* A circulating species of α -1 anti-trypsin ($\alpha 1$ AT) that was not bound by
14 the immuno-depletion column (Figure 2 F5, arrow k) was significantly higher in AD pools (3.3
15 fold, $p < 0.02$, Table 2). The $\alpha 1$ AT variant also closely correlated in regression analysis with the
16 $\epsilon 4$ proxy spot volumes (Figure 4B, $R^2 = 0.83$, $P < 0.0001$). The $\alpha 1$ AT variant that correlated with
17 the $\epsilon 4$ proxy spot is shown in Figure 4D, where the *i* panel has low $\epsilon 4$ proxy and the *ii* panel has
18 high $\epsilon 4$ proxy. The relationship of these spots is qualitatively represented in the false-color image
19 overlay in Figure 4C, indicated by white arrows.

20
21 **Figure 4.** A. Regression analysis of the basic F5 ApoE variant ($\epsilon 4$ proxy) with the fractional
22 APOE $\epsilon 4$ gene dosage of the 12 pools: $R^2 = 0.83$, $p < 0.0001$. Pool symbols are male healthy
23 controls -X, female healthy controls - Δ , male AD - \square , female AD - \diamond . B. Regression analysis of

1 total cohort, non-binding α 1-antitrypsin (α 1AT) variant vs. apoE ϵ 4 proxy: $R^2 = 0.82$, $p < 0.0001$;
2 Pools are $n=12$. Group symbols are: AD - \square , HC - $+$. C. F5 multiplex gels that have not been
3 aligned for spot-matching. Arrows indicate the correlated changes between the ϵ 4 proxy spot
4 (lower end) and the AD significant α 1AT variant (upper end). The AD pools are represented by
5 red in the upper three images and by green in the lower images, reflecting the dye reversal.
6 Yellow represents approximately equal contribution of intensity from AD and control proteins.
7 D. Detail from a pair of multiplexed gel images representative of low ApoE ϵ 4 containing pools
8 (panel *i*) and high ApoE ϵ 4 containing pools (panel *ii*). The level of α 1ACT isoforms correlated
9 with the 34 kDa ApoE ϵ 4 proxy spot that is shown in lower right-hand corners of the panel *i* and
10 *ii* images. Regression analysis Pearson correlations: a- $p=0.012$, $R^2=0.45$; b- $p=0.002$, $R^2=0.61$;
11 c- $p=0.003$, $R^2=0.56$; d- $p=0.002$, $R^2=0.61$; e- $p=0.007$, $R^2=0.51$; f- $p=0.003$, $R^2=0.58$. None of
12 the α 1ACT spots significantly discriminated the AD group from the HC group. The α 1AT spot
13 that significantly discriminated AD from HC pools (3.3 fold, $p < 0.02$,) is shown in panel *ii*.

14

15 An unidentified protein spot (Figure 2 F1, arrow l) was significantly lower (1.5-fold, $p <$
16 0.05, Table 2) in AD pools.

17 *Sex specific differences.* Vitamin D binding protein (VDBP) cleavage product isoforms,
18 (Figure 1 F3, arrows n, o, x and Figure 5, demonstrated asymmetric sex-dependent AD
19 associations. In female AD pools, several cleavage products of VDBP were in significantly
20 higher concentrations relative to female control pools ($p < 0.05$). In male AD pools, many of the
21 same VDBP cleavage products had significantly lower concentrations, relative to male control
22 pools ($p < 0.05$, Figure 5).

1 **Figure 5.** Intact and cleaved VDBP with sex specific changes shown in tables on the right. A.
2 Intact (top spot train) and cleaved VDBP (spots A, B, C). This spot train corresponds to n in
3 Figure 2 F3. The intact VDBP spots were saturated and masked from the Progenesis analysis. B.
4 Cleaved VDBP (A - M). This cluster of cleavages corresponds to o in Figure 2 F3. C. Cleaved
5 VDBP (A - E). This cluster of cleavages corresponds to x in Figure 2 F3. Significant changes (p
6 < 0.05) are shown in bold.

7
8 Isoforms of complement factor I (Figure 2 F3 arrows p, q, r, s) also showed significant
9 asymmetrical sex-specific dysregulation in AD (Table 2).

10 *Targeted Validation of 2D gel biomarkers.* The discovery experiment conducted with 2D
11 gels had several limitations, including the use of pooled plasma, which limits the ability to
12 determine the potential for these markers to provide meaningful discriminatory signals in
13 individuals. To validate the differentially expressed proteins in individual samples, we used a
14 multiplexed quantitative LC-MS/MS assay developed by MRM proteomics (BAK76, Canada).
15 Plasma (Li heparin) samples were obtained from AIBL (Demographics Table 3) and included an
16 even number of males and females and cognitively normal controls ($n=44$) and probable AD
17 ($n=44$). We could not confirm the elevation of any of the eight proteins we discovered using the
18 pooled samples (Figure 6). However, we did discover that complement C3, beta-2-microglobulin
19 and peroxiredoxin-2, proteins, previously reported to be changed in the literature (29,52-54),
20 were elevated in AD plasma (Figure 6). We did not replicate any of the associations we observed
21 with sex or genotype in the discovery experiment ($p > 0.05$, one-way ANOVA). However, this
22 likely to be due to the inability to distinguish the several proteoforms that were observed by 2D
23 gels with an assay that measures total abundance of all the proteoforms of a protein. Receiver

1 operating characteristic (ROC) analysis for complement C3, beta-2-microglobulin and
2 peroxiredoxin 2 indicate that they only have weak discriminatory (accuracy ranged between 60-
3 65 %) ability to distinguish between cognitively normal from AD (Table 4).

4
5 **Figure 6.** Measurement of plasma biomarkers in control (n=44, black diamonds) and
6 Alzheimer's disease (n=44, grey circles) plasma. Biomarker candidates discovered using 2D gels
7 were targeted and measured using LC-MS/MS and heavy labeled ($[^{13}\text{C}_6, ^{15}\text{N}_2$ -lysine] or $[^{13}\text{C}_6$
8 $, ^{15}\text{N}_4$ -arginine) peptides as internal standards. P-values were calculated using a one-way
9 ANOVA and Sidak correction for multiple comparisons.(94)

10 11 **Discussion (1596 words)**

12 The effect of the APOE genotype on protein expression is an important consideration for
13 the refinement of discovery and validation of future biomarkers in plasma (55). Consistent with
14 this found significant correlation of increasing α 1-antitrypsin (α 1AT) with APOE ϵ 4 genotype in
15 plasma. We also found increased levels of cleavage products of VDBP in females with AD and a
16 decrease in the cleavage products in males with AD. (Figure 5). Due to the enrichment of APOE
17 ϵ 4 genotype in AD cohorts, studies that compare controls vs AD are also confounding
18 populations of 20% APOE ϵ 4 positive versus an AD population with 40-80% APOE ϵ 4 positive.
19 To the best of our knowledge the current study is the first plasma proteomics study indicating
20 that α 1AT or α 1 anti-chymotrypsin (α 1ACT) have correlations with the APOE.

21 α -1 Anti-trypsin (α 1AT) is an abundant, circulating, acute phase response (APR) serine
22 protease inhibitor (serpin) that was targeted for removal from the analyte proteins by immuno-
23 depletion (Figure 1 MARS14). The close correlation of α 1AT with the ϵ 4 proxy variant, shown

1 in Figure 4B, suggests that α 1AT may be a marker of the mode by which APOE ϵ 4 contributes to
2 the etiology of AD. It is of interest that α 1AT, which is a serpin with known associations to AD
3 in blood (56-58), CSF(59,60) and senile plaques (61) also correlated with the APOE ϵ 4 allele
4 (Figure 4B), however the specific physiological role of α 1AT in tissues is not well elucidated.
5 The Alzgene website shows a single positive genetic association of AD with an α 1AT allele,
6 from a small, unconfirmed 1996 study (62). Analysis of total α 1AT in neat undiluted plasma
7 from individuals did not display any significant changes (Figure 6).

8 The APR serpin, α 1ACT, did not significantly discriminate AD from control pools,
9 however, regression analysis of α 1ACT variants significantly correlated with the ϵ 4 proxy spot
10 volumes (Figure 4D). α 1ACT has been reported to have genetic associations with AD (63,64)
11 and has been found in elevated concentration in plasma (65,66) and CSF (67) in AD. α 1ACT is
12 more highly expressed in the brains of AD patients and is a component of senile plaques (68), as
13 is ApoE (69). Previous studies have suggested relationships between plasma concentrations of
14 α 1ACT and APOE genotype, but the results have been inconsistent. A radial immunodiffusion
15 study found no correlation of APOE genotype with levels of α 1ACT in plasma or serum (70). An
16 enzyme linked immuno-sorption assay study, showed α 1ACT to have positive predictive value
17 for the rate of cognitive decline in ϵ 4 carriers, and no age-dependence, in AD patients (71). A
18 nephelometric assay study showed higher concentrations of plasma α 1ACT in AD patients who
19 were non-APOE ϵ 4 carriers (72). Functionally, α 1ACT was shown to induce hippocampus and
20 cerebral cortex plaque formation in mouse models of AD (73), as well as the phosphorylation of
21 tau in the neurons of transgenic mice (74). Both α 1ACT and α 1AT bind A β and suppress its *in*
22 *vitro* fibrillization, which is a necessary process for the formation of senile plaques *in vivo* (75).
23 Thus its role in AD may be more important at the functional level than as a marker of disease.

1 The elevated Hpt that we observed along with other circulating APR proteins may be a
2 peripheral response to activated endothelia of the brain vessels. Various means by which cross-
3 talk between central and peripheral inflammation may occur have been summarized (76). The
4 possibility that Hpt flow-through from the immuno-depletion column enriched a sub-population
5 of non-binding conformers may be supported by the selective enrichment of 45 kDa and 8.9 kDa
6 chains in the significantly changed species of AD pools, without a significant change of the 16
7 kDa chain. The question of whether Hpt was significantly higher in the flow-through because it
8 exceeded the binding capacity of the column, or because of steric hindrance was beyond the
9 scope of this study. In agreement with our observation, a previous report using a MARS column
10 also observed an increase in Hpt in both AD and type 2 diabetes plasma (77) indicating that an
11 Hpt increase is likely due to a general increase in inflammation. When measured in individuals
12 there was no significant increase (Figure 6) in Hpt but this may be due to the inability of the LC-
13 MS/MS method used to discriminate between the 45, 16 and 8.9 kDa chains.

14 Systemic inflammation is commonly measured clinically by assay of plasma C-reactive
15 protein (CRP) (78). Circulating CRP is primarily synthesized in the liver and, like Hpt, CRP
16 synthesis is mediated by the pro-inflammatory cytokines IL-1 β and IL-6 (79). CRP is elevated in
17 AD brain (80), but is not consistently higher in AD plasma. In the current study, CRP was
18 detected in the 2DGE but when measured in the validation cohort by LC-MS the CRP levels
19 were sporadic and no significant elevation was observed in AD (Figure 6). The highly variable
20 nature of the CRP levels is consistent with its role in acute phase inflammation response that
21 changes with a large range of pathologies and not specific for AD.

22 Zinc α 2-glycoprotein (ZAG) is a 41 kDa glycoprotein adipokine believed to function as
23 a lipid mobilizing factor (81). In a study with a relatively wide range of body mass indices

1 (BMI), serum ZAG discriminated groups with a negative correlation between BMI and ZAG
2 concentrations (82). ZAG has been found significantly lower in ventricular CSF of AD patients,
3 discriminating AD from normal controls and non-AD dementias (83). Lower BMI has been
4 associated with risk of AD (84). In the current study, BMI data were available for 54/72 AD
5 subjects and 60/72 control subjects and was significantly higher in the AD pools (Table 1),
6 consistent with elevated ZAG variants observed. The validation study on individual samples
7 showed a trend ($p=0.06$) towards elevated levels of ZAG in plasma from AD cases (Figure 6).

8 In addition to disease classification, participants were evenly pooled according to sex. A
9 consensus has yet to be reached as to the prevalence of sex-specific differences in AD (85,86)
10 and there is limited proteomic data on plasma investigating sex specific differences between AD
11 and controls. To look for sex-specific dysregulation of proteins, we made intra-sex comparisons
12 between AD and HC pools and found Vitamin D binding protein (VDBP) and Complement
13 factor I (CFI) to be differentially regulated according to sex. VDBP is an abundant, monomeric
14 52-59 kDa glycoprotein that functions as the primary plasma transporter of the sterol vitamin D
15 and its metabolites (87). In addition to its role as vitamin D transporter, VDBP scavenges and
16 sequesters actin monomers in the blood after cellular damage. It does so in concert with gelsolin
17 (88), protecting micro-vasculature from the detrimental effects of ectopic actin fibrillization.
18 VDBP is a regulator of macrophages and osteoclasts, and as an important chemotactic factor for
19 leukocytes (89), independent of its vitamin D binding function. Its synthesis is estrogen
20 dependent (90) and blood concentration is significantly lower in males than females (91,92). The
21 gel image of F3 shows three abundant spot-trains of cleaved VDBP species (Figure 1 F3, arrows
22 n, o, x), below the intact VDBP spot-train (Figure 1 F3, arrow m). The three spot-train clusters of
23 cleaved peptides focused as disulfide bound complexes in the IEF step, to similar pIs as the

1 uncleaved variants, as they were unified by 14 intra-chain disulfide bridges. After focusing,
2 chemical reduction released cleaved peptides to migrate to their respective lower apparent
3 molecular weights. The proteoform difference observed with 2D-gels was not recapitulated with
4 the LC-MS/MS assay that measured the total pool of VDBP (Figure 6).

5 CFI is a complement activation inhibitor that has been shown to undergo disrupted
6 function *in vitro* in the presence of A β (93). CFI plasma concentration is modestly decreased in
7 AD and correlated with brain volume (29), but we found no reports of gender specificity.
8 Further, when measured in individuals we did not see any gender differences.

9 The etiology of AD, as for many diseases, is complex and polygenic. Pooled proteomics
10 studies are designed to detect sporadically changing disease-related isoforms that change
11 consistently enough in afflicted subjects to effect consistent “average” changes within pools, and
12 as such constitutes a limitation of the current study. Our future studies aim to validated and
13 understand the relationships between VDBP, CFI, α 1ACT, and α 1AT with sex and genotype,
14 respectively. Here we measured the biomarkers discovered with 2DGE using a quantitative LC-
15 MS/MS assay and the changes we observed by 2DGE were not validated with this approach.
16 However, we did measure samples by quantitative LC-MS/MS that were independent of the
17 discovery study and differences between AD and control values of several of the markers
18 approached statistical significance (e.g. VDBP; Figure 6). Overall, the measurement of total
19 protein by LC-MS rather than proteoform-specific changes measured via 2DGE offers a potential
20 explanation for the failure to validate the 2DGE discoveries. However, the replication of
21 elevation of beta-2-microglobulin, complement C3 and peroxiredoxin 2 validate previous reports
22 of these changes in AD and of the LC-MS/MS based assay to report global protein level changes
23 (29,52-54). The correlation α 1AT or α 1ACT with the *APOE* genotype indicates that the point

1 mutation differences between APOE ϵ 2/3/4 may have wider impact than on the function of just
2 the ApoE protein as a recent proteomic study in AD brain tissue has demonstrated (55). Further,
3 the failure
4 to validate many of the proteoform changes highlights the inability of assays that measure the
5 total abundance of a protein target (e.g. ELISA, LC-MS/MS) to reflect the complexity of the
6 proteome. Overall, complement C3, beta-2-microglobulin and peroxiredoxin-2 may add value to
7 the emerging plasma amyloid b2 and tau assays for the early diagnosis of AD.

1 **Table 1.** Demographic data for each group of pooled plasma (n=12 individuals per pool, three groups per condition). The p-value was
2 calculated with a two-tailed Student's t-test between All AD and All controls only.

3 *BMI values from 54/72 AD subjects, 60/72 control subjects. Samples are from the baseline timepoint of the ABIL study.

4

Parameter	Female AD	Male AD	Female Controls	Male Controls	All AD	All Controls	p-value
Age in years	82.2 (1.2)	77.0 (1.8)	69.1 (1.5)	70.5 (4.7)	79.6 (3.1)	69.8 (3.2)	0.0001
% <i>APOE</i> ε4	37.5 (4.2)	43.1 (16.8)	19.4 (2.4)	6.9 (6.4)	40.3 (11.4)	13.2 (8.1)	0.0001
BMI (kg/mg ²)*	25.2 (1.2)	24.6 (1.7)	27.2 (1.7)	25.9 (0.3)	24.9 (1.4)	26.5 (1.3)	0.06
n	36	36	36	36	72	72	

5

6

1 **Table 2.** Differentially expressed proteins discovered with 2D gel proteomics with a p-value <0.05.

Protein name	Accession #	RP	MW	Whole cohort		Male cohort		Female cohort		MS method	Mascot Score/#peptides	Comment
		Fraction ID	(kDa)	AD fold change	p-value	AD fold change	p-value	AD fold change	p-value			
Zinc α 2-glycoprotein (ZAG)	P25311	1a	40	1.9 up	<0.05	NS	NS	NS	NS	2	NS	Most basic glycoform
Zinc α 2-glycoprotein (ZAG)	P25311	1b	40	1.5 up	<0.05	NS	NS	NS	NS	2	111/4	Most basic glycoform
Zinc α 2-glycoprotein (ZAG)	P25311	1c	40	1.3 up	0.06	NS	NS	NS	NS	2	88/6	NS but trending
Histidine-rich glycoprotein (HRG)	P04196	1d	~35	1.7 up	<0.02	NS	NS	2.9 up	<0.002	2	161/4	Putative cleavage product
Unidentified Series	n/a	1e	~40	1.5 down	<0.05	NS	NS	NS	NS	-	n/a	Low abundant species
Haptoglobin (Hpt) heavy chain	P00738	2a	40	2.0 up	<0.01	NS	NS	2.2 up	<0.02	2	238/13	Summation of variants
Haptoglobin (Hpt) mid chain	P00738	2b	16	NS	NS	NS	NS	NS	NS	2	*	NS changing subunit of Hpt
Haptoglobin (Hpt) light chain	P00738	2c	9	2.4 up	<0.02	NS	NS	NS	NS	2	*	Summation of variants
Vitamin D binding protein (VDBP)	P02774	3b	~50	NS	NS	See figure 5						Cleavage products
Vitamin D binding protein (VDBP)	P02774	3c	~40	NS	NS	See figure 5						Multiple cleavage products
Vitamin D binding protein (VDBP)	P02774	3d	~10	NS	NS	See figure 5						Multiple cleavage products
Inter α trypsin inhibitor heavy chain H4 (ITIH4)	Q14624	3e	~12	1.3 up	<0.05	NS	NS	NS	NS	3	428/5	C-term cleavage product
Complement factor 1(CFI)	P05156	3f	~53	NS	NS	2.5 up	<0.01	2.6 down	<0.02	2	64/2	Putative cleavage product
Complement factor 1(CFI)	P05156	3g	~53	NS	NS	2.0 up	<0.001	2.4 down	<0.03	2	78/2	Putative cleavage product
Complement factor 1(CFI)	P05156	3h	~53	NS	NS	3.6 up	0.056	3.1 down	<0.03	2	127/4	Putative cleavage product
Complement factor 1(CFI)	P05156	3i	~53	NS	NS	4.0 up	<0.1	3.1 down	0.058	2	69/1	NS but trending
Inter α trypsin inhibitor heavy chain H4 (ITIH4)	Q14624	4a	~40	1.3 up	<0.05	1.5 up	<0.02	NS	NS	3	890/14	N-term cleavage product
C-reactive binding protein (CRP)	P02741	4b	25	3.2 up	0.19	NS	NS	NS	NS	1	96/2	NS change
C-reactive binding protein (CRP)	P02741	4c	25	2.9 up	0.09	NS	NS	NS	NS	1	NS	NS change
C-reactive binding protein (CRP)	P02741	4d	25	2.4 up	0.18	NS	NS	NS	NS	1	NS	NS change
C-reactive binding protein (CRP)	P02741	4e	25	2.2 up	0.06	NS	NS	NS	NS	1	NS	NS but trending
α 1-antitrypsin (α 1AT)	P01009	5a	~47	3.3	<0.02	NS	NS	NS	NS	2	86/3	
Apolipoprotein E (ApoE)	P02649	5b	34	1.5 up	<0.02	NS	NS	NS	NS	2	149/7	Epsilon 4 proxy

2 NS= Not submitted. Based on continuity of spot train in gel.

3

1 **Table 3.** Demographic data for plasma samples used for targeted mass spectrometry biomarker
2 validation.

	Controls	Alzheimer Disease	p-value
Age in years	72.9 (6)	76.9 (7.4)	0.003*
% APOE ε4	13	37	0.01 [#]
% APOE ε2	20.5	6.8	0.06 [#]
% Female	50	50	
Amyloid PET SUVR	1.17 (0.05)	2.35 (0.49) [^]	2e-10
n	44	44	

3 *p-value calculated using non-paired Student's t-test

4 [#]p-value for APOE allele frequency calculated using N-1 χ^2

5 [^] PET scans are only available for 22 of the 44 cases.

6

- 1 **Table 4.** Receiver operating characteristic (ROC) analysis of proteins measured by targeted LC-
2 MS assay showing ability to distinguish controls (n=44) from Alzheimer's case (n=44).

Protein ID	AUC	Sensitivity %	Specificity %	p-value
Complement C3	0.65	69.8	59.1	0.014
Beta-2-Microglobulin	0.64	47.8	80	0.022
Peroxiredoxin-2	0.60	-	-	0.098

3

1 **Abbreviations**

2 α 1-Anti-trypsin, α 1AT; α 1 Anti-chymotrypsin, α 1ACT; Acute-phase reactant, APR; Alzheimer's
3 disease, AD; Amyloid precursor protein, APP; Amyloid β peptide, A β ; Apolipoprotein E protein,
4 ApoE; Blood-brain barrier, BBB; Body mass index, BMI; C-reactive protein, CRP; Central
5 Nervous System, CNS; Cerebrospinal fluid, CSF; Haptoglobin, Hpt; Healthy control, HC;
6 Histidine-rich glycoprotein, HRG; Inter- α trypsin inhibitor, ITIH; Isoelectric focusing IEF,
7 Isoelectric point pI; Kunitz-type protease inhibitor, KPI; Reverse phase high pressure liquid
8 chromatography, RP-HPLC; Vitamin D binding protein, VDBP; Zinc α 2-glycoprotein, ZAG

9 **Competing interests**

10 EAD and PAG are founders and shareholders in Z dye LLC, which licenses patents issued to
11 Montana State University and reagents used in the present study. BRR, SBL and EAD are
12 inventors on PCT application AU2014/000849. BRR receives research support from Agilent
13 Technologies and from eMSion Inc. (OR, USA). All other authors declare that no competing
14 interests exist.

15 **Acknowledgments**

16 We would like to acknowledge the Australian Imaging and Biomarker, Lifestyle (AIBL)
17 research team (a complete list of researchers can be found at www.aibl.csiro.au) and the
18 volunteers and their families. We would also like to acknowledge funding from the Dementia
19 Collaborative Research Centres (DCRC), The Victorian Government's Operational
20 Infrastructure Support Program and the Wicking Trust. National Institutes of Health- Small
21 Business Technology Transfer (NIH STTR grant 5R42RR021790, EAD PI), Center for
22 Biological Research Excellence (NIH CoBRE grants 1P20RR024237 and 2P20GM 104935,
23 EAD PI), Montana Board of Research and Commercialization Technology Grants: (MBRCT:
24 05-14, 06-46, and 08-17, EAD PI) and the Murdock Charitable Trust (EAD, PI). The
25 Cooperative Research Centre for Mental Health, Alzheimer's Drug Discovery Foundation grant
26 (BRR, PI), Knott Family Equipment Grant (BRR, PI), the Pierce Armstrong Trust (BRR, PI),
27 NHMRC Dementia Leadership Fellowship (BR, APP1138673), and NHMRC project grant (BR,
28 APP1164692). The Florey Neuroproteomics Facility. We would like to thank the Melbourne
29 Mass Spectrometry and Proteomics Facility of The Bio21 Molecular Science and Biotechnology
30 Institute at The University of Melbourne for the support of mass spectrometry analysis.

1 Data availability statement

2 The proteomics data used to support the findings of this study are available from the
3 corresponding author upon request.
4

5 References

- 6 1. Alzheimer's, A. (2014) 2014 Alzheimer's disease facts and figures. *Alzheimers Dement*
7 **10**, e47-92
- 8 2. Barnett, J. H., Lewis, L., Blackwell, A. D., and Taylor, M. (2014) Early intervention in
9 Alzheimer's disease: a health economic study of the effects of diagnostic timing. *BMC*
10 *neurology* **14**, 101
- 11 3. Breteler, M. M. (2001) Early life circumstances and late life Alzheimer's disease.
12 *Epidemiology* **12**, 378-379
- 13 4. Jellinger, K. A., Janetzky, B., Attems, J., and Kienzl, E. (2008) Biomarkers for early
14 diagnosis of Alzheimer disease: 'ALzheimer ASsociated gene'--a new blood biomarker?
15 *Journal of cellular and molecular medicine* **12**, 1094-1117
- 16 5. Villemagne, V. L., Burnham, S., Bourgeat, P., Brown, B., Ellis, K. A., Salvado, O.,
17 Szoek, C., Macaulay, S. L., Martins, R., Maruff, P., Ames, D., Rowe, C. C., Masters, C.
18 L., Australian Imaging, B., and Lifestyle Research, G. (2013) Amyloid beta deposition,
19 neurodegeneration, and cognitive decline in sporadic Alzheimer's disease: a prospective
20 cohort study. *The Lancet. Neurology* **12**, 357-367
- 21 6. Blennow, K., Dubois, B., Fagan, A. M., Lewczuk, P., de Leon, M. J., and Hampel, H.
22 (2015) Clinical utility of cerebrospinal fluid biomarkers in the diagnosis of early
23 Alzheimer's disease. *Alzheimers Dement* **11**, 58-69
- 24 7. Holtzman, D. M. (2011) CSF biomarkers for Alzheimer's disease: current utility and
25 potential future use. *Neurobiol Aging* **32 Suppl 1**, S4-9
- 26 8. Starr, J. M., Farrall, A. J., Armitage, P., McGurn, B., and Wardlaw, J. (2009) Blood-brain
27 barrier permeability in Alzheimer's disease: a case-control MRI study. *Psychiatry*
28 *research* **171**, 232-241
- 29 9. Zipser, B. D., Johanson, C. E., Gonzalez, L., Berzin, T. M., Tavares, R., Hulette, C. M.,
30 Vitek, M. P., Hovanesian, V., and Stopa, E. G. (2007) Microvascular injury and blood-
31 brain barrier leakage in Alzheimer's disease. *Neurobiol Aging* **28**, 977-986
- 32 10. Banks, W. A. (2012) Brain meets body: the blood-brain barrier as an endocrine interface.
33 *Endocrinology* **153**, 4111-4119
- 34 11. Hartai, Z., Juhász, A., Rimanóczy, Á., Janáky, T., Donkó, T., Dux, L., Penke, B., Tóth,
35 G. K., Janka, Z., and Kálmán, J. (2007) Decreased serum and red blood cell kynurenic
36 acid levels in Alzheimer's disease. *Neurochemistry international* **50**, 308-313
- 37 12. Mohanty, J. G., Shukla, H. D., Williamson, J. D., Launer, L. J., Saxena, S., and Rifkind,
38 J. M. (2010) Alterations in the red blood cell membrane proteome in alzheimer's subjects
39 reflect disease-related changes and provide insight into altered cell morphology.
40 *Proteome science* **8**, 11
- 41 13. Faux, N. G., Rembach, A., Wiley, J., Ellis, K. A., Ames, D., Fowler, C. J., Martins, R. N.,
42 Pertile, K. K., Rumble, R. L., Trounson, B., Masters, C. L., Group, A. R., and Bush, A. I.
43 (2014) An anemia of Alzheimer's disease. *Mol Psychiatry* **19**, 1227-1234
- 44 14. Ryan, T. M., Roberts, B. R., McColl, G., Hare, D. J., Doble, P. A., Li, Q. X., Lind, M.,
45 Roberts, A. M., Mertens, H. D., Kirby, N., Pham, C. L., Hinds, M. G., Adlard, P. A.,

- 1 Barnham, K. J., Curtain, C. C., and Masters, C. L. (2015) Stabilization of nontoxic
2 Abeta-oligomers: insights into the mechanism of action of hydroxyquinolines in
3 Alzheimer's disease. *J Neurosci* **35**, 2871-2884
- 4 15. Fu, T.-K., Matsuyama, S. S., Kessler, J. O., and Jarvik, L. F. (1986) Philothermal
5 response, microtubules and dementia. *Neurobiology of aging* **7**, 41-43
- 6 16. Jarvik, L. F., Matsuyama, S. S., Kessler, J. O., Fu, T.-k., Tsau, S., and Clark, E. O. (1982)
7 Philothermal response of polymorphonuclear leukocytes in dementia of the Alzheimer
8 type. *Neurobiology of aging* **3**, 93-99
- 9 17. Scott, R. B., Collins, J. M., and Hunt, P. A. (1994) Alzheimer's disease and Down
10 syndrome: leukocyte membrane fluidity alterations. *Mechanisms of ageing and*
11 *development* **75**, 1-10
- 12 18. Burnham, S. C., Faux, N. G., Wilson, W., Laws, S. M., Ames, D., Bedo, J., Bush, A. I.,
13 Doecke, J. D., Ellis, K. A., Head, R., Jones, G., Kiiveri, H., Martins, R. N., Rembach, A.,
14 Rowe, C. C., Salvado, O., Macaulay, S. L., Masters, C. L., Villemagne, V. L.,
15 Alzheimer's Disease Neuroimaging, I., Australian Imaging, B., and Lifestyle Study
16 Research, G. (2014) A blood-based predictor for neocortical Abeta burden in Alzheimer's
17 disease: results from the AIBL study. *Mol Psychiatry* **19**, 519-526
- 18 19. Doecke, J. D., Laws, S. M., Faux, N. G., Wilson, W., Burnham, S. C., Lam, C. P.,
19 Mondal, A., Bedo, J., Bush, A. I., Brown, B., De Ruyck, K., Ellis, K. A., Fowler, C.,
20 Gupta, V. B., Head, R., Macaulay, S. L., Pertile, K., Rowe, C. C., Rembach, A.,
21 Rodrigues, M., Rumble, R., Szoek, C., Taddei, K., Taddei, T., Tronson, B., Ames, D.,
22 Masters, C. L., Martins, R. N., Alzheimer's Disease Neuroimaging, I., Australian
23 Imaging, B., and Lifestyle Research, G. (2012) Blood-based protein biomarkers for
24 diagnosis of Alzheimer disease. *Arch Neurol* **69**, 1318-1325
- 25 20. Guo, L. H., Alexopoulos, P., Wagenpfeil, S., Kurz, A., Perneczky, R., and Alzheimer's
26 Disease Neuroimaging, I. (2013) Plasma proteomics for the identification of Alzheimer
27 disease. *Alzheimer Dis Assoc Disord* **27**, 337-342
- 28 21. Hye, A., Lynham, S., Thambisetty, M., Causevic, M., Campbell, J., Byers, H. L., Hooper,
29 C., Rijdsdijk, F., Tabrizi, S. J., Banner, S., Shaw, C. E., Foy, C., Poppe, M., Archer, N.,
30 Hamilton, G., Powell, J., Brown, R. G., Sham, P., Ward, M., and Lovestone, S. (2006)
31 *Proteome-based plasma biomarkers for Alzheimer's disease*,
- 32 22. Llano, D. A., Devanarayan, V., Simon, A. J., and Alzheimer's Disease Neuroimaging, I.
33 (2013) Evaluation of plasma proteomic data for Alzheimer disease state classification and
34 for the prediction of progression from mild cognitive impairment to Alzheimer disease.
35 *Alzheimer Dis Assoc Disord* **27**, 233-243
- 36 23. Song, F., Poljak, A., Kochan, N. A., Raftery, M., Brodaty, H., Smythe, G. A., and
37 Sachdev, P. S. (2014) Plasma protein profiling of Mild Cognitive Impairment and
38 Alzheimer's disease using iTRAQ quantitative proteomics. *Proteome science* **12**, 5
- 39 24. Muenchhoff, J., Poljak, A., Song, F., Raftery, M., Brodaty, H., Duncan, M., McEvoy, M.,
40 Attia, J., Schofield, P. W., and Sachdev, P. S. (2015) Plasma protein profiling of mild
41 cognitive impairment and Alzheimer's disease across two independent cohorts. *J*
42 *Alzheimers Dis* **43**, 1355-1373
- 43 25. Hye, A., Lynham, S., Thambisetty, M., Causevic, M., Campbell, J., Byers, H. L., Hooper,
44 C., Rijdsdijk, F., Tabrizi, S. J., Banner, S., Shaw, C. E., Foy, C., Poppe, M., Archer, N.,
45 Hamilton, G., Powell, J., Brown, R. G., Sham, P., Ward, M., and Lovestone, S. (2006)
46 Proteome-based plasma biomarkers for Alzheimer's disease. *Brain* **129**, 3042-3050

- 1 26. Lonneborg, A. (2008) Biomarkers for Alzheimer disease in cerebrospinal fluid, urine,
2 and blood. *Molecular diagnosis & therapy* **12**, 307-320
- 3 27. Snyder, H. M., Corriveau, R. A., Craft, S., Faber, J. E., Greenberg, S. M., Knopman, D.,
4 Lamb, B. T., Montine, T. J., Nedergaard, M., Schaffer, C. B., Schneider, J. A.,
5 Wellington, C., Wilcock, D. M., Zipfel, G. J., Zlokovic, B., Bain, L. J., Bosetti, F., Galis,
6 Z. S., Koroshetz, W., and Carrillo, M. C. (2014) Vascular contributions to cognitive
7 impairment and dementia including Alzheimer's disease. *Alzheimers Dement*
- 8 28. Teunissen, C. E., de Vente, J., Steinbusch, H. W., and De Bruijn, C. (2002) Biochemical
9 markers related to Alzheimer's dementia in serum and cerebrospinal fluid. *Neurobiol*
10 *Aging* **23**, 485-508
- 11 29. Thambisetty, M., Simmons, A., Hye, A., Campbell, J., Westman, E., Zhang, Y.,
12 Wahlund, L. O., Kinsey, A., Causevic, M., Killick, R., Kloszewska, I., Mecocci, P.,
13 Soinen, H., Tsolaki, M., Vellas, B., Spenger, C., Lovestone, S., and AddNeuroMed, C.
14 (2011) Plasma biomarkers of brain atrophy in Alzheimer's disease. *PLoS One* **6**, e28527
- 15 30. Chen, Z., Mengel, D., Keshavan, A., Rissman, R. A., Billinton, A., Perkinson, M.,
16 Percival-Alwyn, J., Schultz, A., Properzi, M., Johnson, K., Selkoe, D. J., Sperling, R. A.,
17 Patel, P., Zetterberg, H., Galasko, D., Schott, J. M., and Walsh, D. M. (2019) Learnings
18 about the complexity of extracellular tau aid development of a blood-based screen for
19 Alzheimer's disease. *Alzheimer's & dementia : the journal of the Alzheimer's Association*
20 **15**, 487-496
- 21 31. Lue, L. F., Sabbagh, M. N., Chiu, M. J., Jing, N., Snyder, N. L., Schmitz, C., Guerra, A.,
22 Belden, C. M., Chen, T. F., Yang, C. C., Yang, S. Y., Walker, D. G., Chen, K., and
23 Reiman, E. M. (2017) Plasma Levels of Abeta42 and Tau Identified Probable
24 Alzheimer's Dementia: Findings in Two Cohorts. *Frontiers in aging neuroscience* **9**, 226
- 25 32. Nakamura, A., Kaneko, N., Villemagne, V. L., Kato, T., Doecke, J., Dore, V., Fowler, C.,
26 Li, Q. X., Martins, R., Rowe, C., Tomita, T., Matsuzaki, K., Ishii, K., Ishii, K., Arahata,
27 Y., Iwamoto, S., Ito, K., Tanaka, K., Masters, C. L., and Yanagisawa, K. (2018) High
28 performance plasma amyloid-beta biomarkers for Alzheimer's disease. *Nature* **554**, 249-
29 254
- 30 33. Risacher, S. L., Fandos, N., Romero, J., Sherriff, I., Pesini, P., Saykin, A. J., and
31 Apostolova, L. G. (2019) Plasma amyloid beta levels are associated with cerebral
32 amyloid and tau deposition. *Alzheimers Dement (Amst)* **11**, 510-519
- 33 34. Schindler, S. E., Bollinger, J. G., Ovod, V., Mawuenyega, K. G., Li, Y., Gordon, B. A.,
34 Holtzman, D. M., Morris, J. C., Benzinger, T. L. S., Xiong, C., Fagan, A. M., and
35 Bateman, R. J. (2019) High-precision plasma beta-amyloid 42/40 predicts current and
36 future brain amyloidosis. *Neurology* **93**, e1647-e1659
- 37 35. Abdi, F., Quinn, J. F., Jankovic, J., McIntosh, M., Leverenz, J. B., Peskind, E., Nixon, R.,
38 Nutt, J., Chung, K., Zabetian, C., Samii, A., Lin, M., Hattan, S., Pan, C., Wang, Y., Jin,
39 J., Zhu, D., Li, G. J., Liu, Y., Waichunas, D., Montine, T. J., and Zhang, J. (2006)
40 Detection of biomarkers with a multiplex quantitative proteomic platform in
41 cerebrospinal fluid of patients with neurodegenerative disorders. *J Alzheimers Dis* **9**, 293-
42 348
- 43 36. Anderson, N. L., and Anderson, N. G. (2002) The human plasma proteome: history,
44 character, and diagnostic prospects. *Mol Cell Proteomics* **1**, 845-867

- 1 37. Jacobs, J. M., Adkins, J. N., Qian, W. J., Liu, T., Shen, Y., Camp, D. G., 2nd, and Smith,
2 R. D. (2005) Utilizing human blood plasma for proteomic biomarker discovery. *J*
3 *Proteome Res* **4**, 1073-1085
- 4 38. Zolotarjova, N., Mrozinski, P., Chen, H., and Martosella, J. (2008) Combination of
5 affinity depletion of abundant proteins and reversed-phase fractionation in proteomic
6 analysis of human plasma/serum. *J Chromatogr A* **1189**, 332-338
- 7 39. Diz, A. P., Truebano, M., and Skibinski, D. O. (2009) The consequences of sample
8 pooling in proteomics: an empirical study. *Electrophoresis* **30**, 2967-2975
- 9 40. Oberg, A. L., and Vitek, O. (2009) Statistical design of quantitative mass spectrometry-
10 based proteomic experiments. *J Proteome Res* **8**, 2144-2156
- 11 41. Dratz, E. A., and Grieco, P. A. (2010) Zwitterionic dyes for labeling in proteomic and
12 other biological analyses. Google Patents
- 13 42. Epstein, M. G., Reeves, B. D., Maaty, W. S., Fouchard, D., Dratz, E. A., Bothner, B., and
14 Grieco, P. A. (2013) Enhanced sensitivity employing zwitterionic and pI balancing dyes
15 (Z-CyDyes) optimized for 2D-gel electrophoresis based on side chain modifications of
16 CyDye fluorophores. New tools for use in proteomics and diagnostics. *Bioconjugate*
17 *chemistry* **24**, 1552-1561
- 18 43. Ellis, K. A., Bush, A. I., Darby, D., De Fazio, D., Foster, J., Hudson, P., Lautenschlager,
19 N. T., Lenzo, N., Martins, R. N., Maruff, P., Masters, C., Milner, A., Pike, K., Rowe, C.,
20 Savage, G., Szoeki, C., Taddei, K., Villemagne, V., Woodward, M., and Ames, D.
21 (2009) The Australian Imaging, Biomarkers and Lifestyle (AIBL) study of aging:
22 methodology and baseline characteristics of 1112 individuals recruited for a longitudinal
23 study of Alzheimer's disease. *Int Psychogeriatr* **21**, 672-687
- 24 44. McKhann, G. M., Knopman, D. S., Chertkow, H., Hyman, B. T., Jack, C. R., Jr., Kawas,
25 C. H., Klunk, W. E., Koroshetz, W. J., Manly, J. J., Mayeux, R., Mohs, R. C., Morris, J.
26 C., Rossor, M. N., Scheltens, P., Carrillo, M. C., Thies, B., Weintraub, S., and Phelps, C.
27 H. (2011) The diagnosis of dementia due to Alzheimer's disease: recommendations from
28 the National Institute on Aging-Alzheimer's Association workgroups on diagnostic
29 guidelines for Alzheimer's disease. *Alzheimer's & dementia : the journal of the*
30 *Alzheimer's Association* **7**, 263-269
- 31 45. Storey, J. D., and Tibshirani, R. (2003) Statistical significance for genomewide studies.
32 *Proc Natl Acad Sci U S A* **100**, 9440-9445
- 33 46. Shevchenko, A., Tomas, H., Havlis, J., Olsen, J. V., and Mann, M. (2006) In-gel
34 digestion for mass spectrometric characterization of proteins and proteomes. *Nat Protoc*
35 **1**, 2856-2860
- 36 47. Heffernan, A. L., Chidgey, C., Peng, P., Masters, C. L., and Roberts, B. R. (2016) The
37 Neurobiology and Age-Related Prevalence of the epsilon4 Allele of Apolipoprotein E in
38 Alzheimer's Disease Cohorts. *J Mol Neurosci* **60**, 316-324
- 39 48. Pike, K. E., Savage, G., Villemagne, V. L., Ng, S., Moss, S. A., Maruff, P., Mathis, C. A.,
40 Klunk, W. E., Masters, C. L., and Rowe, C. C. (2007) Beta-amyloid imaging and
41 memory in non-demented individuals: evidence for preclinical Alzheimer's disease. *Brain*
42 **130**, 2837-2844
- 43 49. Langlois, M. R., and Delanghe, J. R. (1996) Biological and clinical significance of
44 haptoglobin polymorphism in humans. *Clin Chem* **42**, 1589-1600

- 1 50. Wernette-Hammond, M. E., Lauer, S. J., Corsini, A., Walker, D., Taylor, J. M., and Rall,
2 S. C., Jr. (1989) Glycosylation of human apolipoprotein E. The carbohydrate attachment
3 site is threonine 194. *J Biol Chem* **264**, 9094-9101
- 4 51. Sarioglu, H., Lottspeich, F., Walk, T., Jung, G., and Eckerskorn, C. (2000) Deamidation
5 as a widespread phenomenon in two-dimensional polyacrylamide gel electrophoresis of
6 human blood plasma proteins. *Electrophoresis* **21**, 2209-2218
- 7 52. Davidsson, P., Westman-Brinkmalm, A., Nilsson, C. L., Lindbjer, M., Paulson, L.,
8 Andreasen, N., Sjogren, M., and Blennow, K. (2002) Proteome analysis of cerebrospinal
9 fluid proteins in Alzheimer patients. *Neuroreport* **13**, 611-615
- 10 53. Dominici, R., Finazzi, D., Polito, L., Oldoni, E., Bugari, G., Montanelli, A., Scarpini, E.,
11 Galimberti, D., and Guaita, A. (2018) Comparison of beta2-microglobulin serum level
12 between Alzheimer's patients, cognitive healthy and mild cognitive impaired individuals.
13 *Biomarkers : biochemical indicators of exposure, response, and susceptibility to*
14 *chemicals* **23**, 603-608
- 15 54. Yoshida, Y., Yoshikawa, A., Kinumi, T., Ogawa, Y., Saito, Y., Ohara, K., Yamamoto,
16 H., Imai, Y., and Niki, E. (2009) Hydroxyoctadecadienoic acid and oxidatively modified
17 peroxiredoxins in the blood of Alzheimer's disease patients and their potential as
18 biomarkers. *Neurobiol Aging* **30**, 174-185
- 19 55. Dai, J., Johnson, E. C. B., Dammer, E. B., Duong, D. M., Gearing, M., Lah, J. J., Levey,
20 A. I., Wingo, T. S., and Seyfried, N. T. (2018) Effects of APOE Genotype on Brain
21 Proteomic Network and Cell Type Changes in Alzheimer's Disease. *Front Mol Neurosci*
22 **11**, 454
- 23 56. Choi, J., Malakowsky, C. A., Talent, J. M., Conrad, C. C., and Gracy, R. W. (2002)
24 Identification of oxidized plasma proteins in Alzheimer's disease. *Biochem Biophys Res*
25 *Commun* **293**, 1566-1570
- 26 57. Liao, P. C., Yu, L., Kuo, C. C., Lin, C., and Kuo, Y. M. (2007) Proteomics analysis of
27 plasma for potential biomarkers in the diagnosis of Alzheimer's disease. *Proteomics Clin*
28 *Appl* **1**, 506-512
- 29 58. Yu, H. L., Chertkow, H. M., Bergman, H., and Schipper, H. M. (2003) Aberrant profiles
30 of native and oxidized glycoproteins in Alzheimer plasma. *Proteomics* **3**, 2240-2248
- 31 59. Finehout, E. J., Franck, Z., Choe, L. H., Relkin, N., and Lee, K. H. (2007) Cerebrospinal
32 fluid proteomic biomarkers for Alzheimer's disease. *Ann Neurol* **61**, 120-129
- 33 60. Puchades, M., Hansson, S. F., Nilsson, C. L., Andreasen, N., Blennow, K., and
34 Davidsson, P. (2003) Proteomic studies of potential cerebrospinal fluid protein markers
35 for Alzheimer's disease. *Brain Res Mol Brain Res* **118**, 140-146
- 36 61. Gollin, P. A., Kalaria, R. N., Eikelenboom, P., Rozemuller, A., and Perry, G. (1992)
37 Alpha 1-antitrypsin and alpha 1-antichymotrypsin are in the lesions of Alzheimer's
38 disease. *Neuroreport* **3**, 201-203
- 39 62. Kowalska, A., Danker-Hopfe, H., Wender, M., Florczak, J., and Walter, H. (1996)
40 Association between the PI* M3 allele of α 1-antitrypsin and Alzheimer's disease? A
41 preliminary report. *Human genetics* **98**, 744-746
- 42 63. Licastro, F., Pedrini, S., Ferri, C., Casadei, V., Govoni, M., Pession, A., Sciacca, F. L.,
43 Veglia, F., Annoni, G., Bonafe, M., Olivieri, F., Franceschi, C., and Grimaldi, L. M.
44 (2000) Gene polymorphism affecting alpha1-antichymotrypsin and interleukin-1 plasma
45 levels increases Alzheimer's disease risk. *Ann Neurol* **48**, 388-391

- 1 64. Licastro, F., Pedrini, S., Govoni, M., Pession, A., Ferri, C., Annoni, G., Casadei, V.,
2 Veglia, F., Bertolini, S., and Grimaldi, L. M. (1999) Apolipoprotein E and alpha-1-
3 antichymotrypsin allele polymorphism in sporadic and familial Alzheimer's disease.
4 *Neurosci Lett* **270**, 129-132
- 5 65. Engelhart, M. J., Geerlings, M. I., Meijer, J., Kiliaan, A., Ruitenberg, A., van Swieten, J.
6 C., Stijnen, T., Hofman, A., Witteman, J. C., and Breteler, M. M. (2004) Inflammatory
7 proteins in plasma and the risk of dementia: the rotterdam study. *Arch Neurol* **61**, 668-
8 672
- 9 66. Licastro, F., Pedrini, S., Caputo, L., Annoni, G., Davis, L. J., Ferri, C., Casadei, V., and
10 Grimaldi, L. M. (2000) Increased plasma levels of interleukin-1, interleukin-6 and alpha-
11 1-antichymotrypsin in patients with Alzheimer's disease: peripheral inflammation or
12 signals from the brain? *Journal of neuroimmunology* **103**, 97-102
- 13 67. Nielsen, H., Minthon, L., Londos, E., Blennow, K., Miranda, E., Perez, J., Crowther, D.,
14 Lomas, D., and Janciauskiene, S. (2007) Plasma and CSF serpins in Alzheimer disease
15 and dementia with Lewy bodies. *Neurology* **69**, 1569-1579
- 16 68. Abraham, C. R., Selkoe, D. J., and Potter, H. (1988) Immunochemical identification of
17 the serine protease inhibitor alpha 1-antichymotrypsin in the brain amyloid deposits of
18 Alzheimer's disease. *Cell* **52**, 487-501
- 19 69. Strittmatter, W. J., Saunders, A. M., Schmechel, D., Pericak-Vance, M., Enghild, J.,
20 Salvesen, G. S., and Roses, A. D. (1993) Apolipoprotein E: high-avidity binding to beta-
21 amyloid and increased frequency of type 4 allele in late-onset familial Alzheimer disease.
22 *Proc Natl Acad Sci U S A* **90**, 1977-1981
- 23 70. Licastro, F., Masliah, E., Pedrini, S., and Thal, L. J. (1999) Blood levels of alpha-1-
24 antichymotrypsin and risk factors for Alzheimer's disease: effects of gender and
25 apolipoprotein E genotype. *Dementia and geriatric cognitive disorders* **11**, 25-28
- 26 71. Porcellini, E., Davis, E. J., Chiappelli, M., Ianni, E., Di Stefano, G., Forti, P., Ravaglia,
27 G., and Licastro, F. (2008) Elevated plasma levels of alpha-1-anti-chymotrypsin in age-
28 related cognitive decline and Alzheimer's disease: a potential therapeutic target. *Curr*
29 *Pharm Des* **14**, 2659-2664
- 30 72. Scacchi, R., Ruggeri, M., Gambina, G., Martini, M. C., Ferrari, G., and Corbo, R. M.
31 (2001) Plasma alpha1-antichymotrypsin in Alzheimer's disease; relationships with APOE
32 genotypes. *Neurobiol Aging* **22**, 413-416
- 33 73. Nilsson, L. N., Bales, K. R., DiCarlo, G., Gordon, M. N., Morgan, D., Paul, S. M., and
34 Potter, H. (2001) Alpha-1-antichymotrypsin promotes beta-sheet amyloid plaque
35 deposition in a transgenic mouse model of Alzheimer's disease. *J Neurosci* **21**, 1444-
36 1451
- 37 74. Padmanabhan, J., Levy, M., Dickson, D. W., and Potter, H. (2006) Alpha1-
38 antichymotrypsin, an inflammatory protein overexpressed in Alzheimer's disease brain,
39 induces tau phosphorylation in neurons. *Brain* **129**, 3020-3034
- 40 75. Giunta, S., Galeazzi, R., Marcellini, M., Corder, E., and Galeazzi, L. (2007) The
41 inflammation-sensitive protein alpha 1-anti-chymotrypsin neutralizes fibrillar aggregation
42 and cytotoxicity of the beta-amyloid peptide more effectively than alpha 1-antitrypsin.
43 *Clinical biochemistry* **40**, 887-892
- 44 76. Holmes, C. (2013) Review: systemic inflammation and Alzheimer's disease. *Neuropathol*
45 *Appl Neurobiol* **39**, 51-68

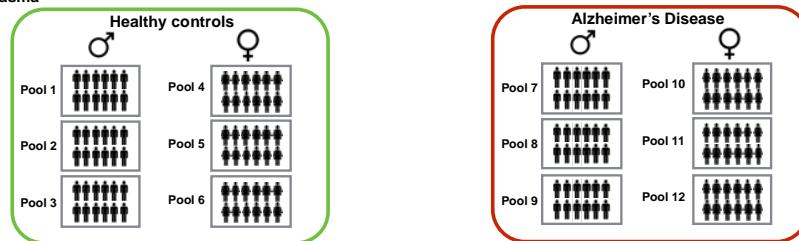
- 1 77. Zhang, R., Barker, L., Pinchev, D., Marshall, J., Rasamoeliso, M., Smith, C., Kupchak,
2 P., Kireeva, I., Ingrassia, L., and Jackowski, G. (2004) Mining biomarkers in human sera
3 using proteomic tools. *Proteomics* **4**, 244-256
- 4 78. Mortensen, R. F. (2001) C-reactive protein, inflammation, and innate immunity.
5 *Immunologic research* **24**, 163-176
- 6 79. Bode, J. G., Albrecht, U., Haussinger, D., Heinrich, P. C., and Schaper, F. (2012) Hepatic
7 acute phase proteins--regulation by IL-6- and IL-1-type cytokines involving STAT3 and
8 its crosstalk with NF-kappaB-dependent signaling. *European journal of cell biology* **91**,
9 496-505
- 10 80. Wood, J. A., Wood, P. L., Ryan, R., Graff-Radford, N. R., Pilapil, C., Robitaille, Y., and
11 Quirion, R. (1993) Cytokine indices in Alzheimer's temporal cortex: no changes in
12 mature IL-1 beta or IL-1RA but increases in the associated acute phase proteins IL-6,
13 alpha 2-macroglobulin and C-reactive protein. *Brain Res* **629**, 245-252
- 14 81. Hirai, K., Hussey, H. J., Barber, M. D., Price, S. A., and Tisdale, M. J. (1998) Biological
15 evaluation of a lipid-mobilizing factor isolated from the urine of cancer patients. *Cancer*
16 *research* **58**, 2359-2365
- 17 82. Selva, D. M., Lecube, A., Hernandez, C., Baena, J. A., Fort, J. M., and Simo, R. (2009)
18 Lower zinc-alpha2-glycoprotein production by adipose tissue and liver in obese patients
19 unrelated to insulin resistance. *The Journal of clinical endocrinology and metabolism* **94**,
20 4499-4507
- 21 83. Roher, A. E., Maarouf, C. L., Sue, L. I., Hu, Y., Wilson, J., and Beach, T. G. (2009)
22 Proteomics-derived cerebrospinal fluid markers of autopsy-confirmed Alzheimer's
23 disease. *Biomarkers : biochemical indicators of exposure, response, and susceptibility to*
24 *chemicals* **14**, 493-501
- 25 84. Shah, R. C., Buchman, A. S., Wilson, R. S., Leurgans, S. E., and Bennett, D. A. (2011)
26 Hemoglobin level in older persons and incident Alzheimer disease: prospective cohort
27 analysis. *Neurology* **77**, 219-226
- 28 85. Barnes, L. L., Wilson, R. S., Bienias, J. L., Schneider, J. A., Evans, D. A., and Bennett,
29 D. A. (2005) Sex differences in the clinical manifestations of Alzheimer disease
30 pathology. *Archives of General Psychiatry* **62**, 685-691
- 31 86. Ruitenberg, A., Ott, A., van Swieten, J. C., Hofman, A., and Breteler, M. M. (2001)
32 Incidence of dementia: does gender make a difference? *Neurobiology of aging* **22**, 575-
33 580
- 34 87. Kawakami, M., Blum, C. B., Ramakrishnan, R., Dell, R. B., and Goodman, D. S. (1981)
35 Turnover of the plasma binding protein for vitamin D and its metabolites in normal
36 human subjects. *The Journal of clinical endocrinology and metabolism* **53**, 1110-1116
- 37 88. White, P., and Cooke, N. (2000) The multifunctional properties and characteristics of
38 vitamin D-binding protein. *Trends in endocrinology and metabolism: TEM* **11**, 320-327
- 39 89. Disanto, G., Ramagopalan, S. V., Para, A. E., and Handunnetthi, L. (2011) The emerging
40 role of vitamin D binding protein in multiple sclerosis. *J Neurol* **258**, 353-358
- 41 90. Bouillon, R., Van Assche, F. A., Van Baelen, H., Heyns, W., and De Moor, P. (1981)
42 Influence of the vitamin D-binding protein on the serum concentration of 1,25-
43 dihydroxyvitamin D3. Significance of the free 1,25-dihydroxyvitamin D3 concentration.
44 *The Journal of clinical investigation* **67**, 589-596
- 45 91. Blanton, D., Han, Z., Bierschenk, L., Linga-Reddy, M. V., Wang, H., Clare-Salzler, M.,
46 Haller, M., Schatz, D., Myhr, C., She, J. X., Wasserfall, C., and Atkinson, M. (2011)

- 1 Reduced serum vitamin D-binding protein levels are associated with type 1 diabetes.
2 *Diabetes* **60**, 2566-2570
- 3 92. Bolland, M. J., Grey, A. B., Ames, R. W., Horne, A. M., Mason, B. H., Wattie, D. J.,
4 Gamble, G. D., Bouillon, R., and Reid, I. R. (2007) Age-, gender-, and weight-related
5 effects on levels of 25-hydroxyvitamin D are not mediated by vitamin D binding protein.
6 *Clinical endocrinology* **67**, 259-264
- 7 93. Wang, J., Ohno-Matsui, K., Yoshida, T., Kojima, A., Shimada, N., Nakahama, K.,
8 Safranova, O., Iwata, N., Saido, T. C., Mochizuki, M., and Morita, I. (2008) Altered
9 function of factor I caused by amyloid beta: implication for pathogenesis of age-related
10 macular degeneration from Drusen. *Journal of immunology* **181**, 712-720
- 11 94. Abdi, H. (2007) *The Bonferonni and Šidák Corrections for Multiple Comparisons.*,
12 Thousand Oaks (CA): Sage.
- 13 95. Unlu, M., Morgan, M. E., and Minden, J. S. (1997) Difference gel electrophoresis: a
14 single gel method for detecting changes in protein extracts. *Electrophoresis* **18**, 2071-
15 2077
- 16

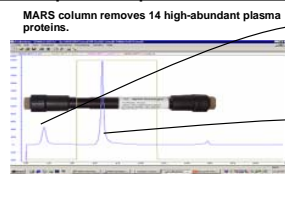
1 Figure 1.

Experimental Work Flow

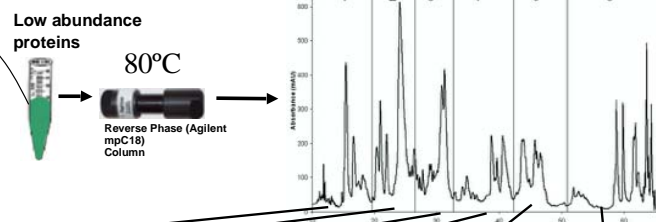
1. Pool EDTA Plasma



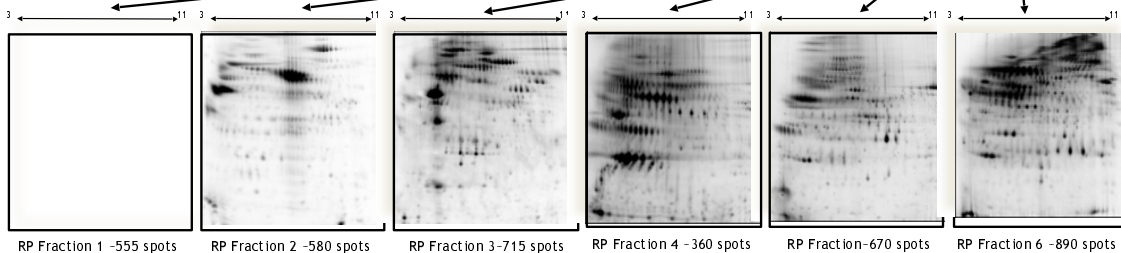
2. Pooled plasma depleted with MARS 14



3. HPLC



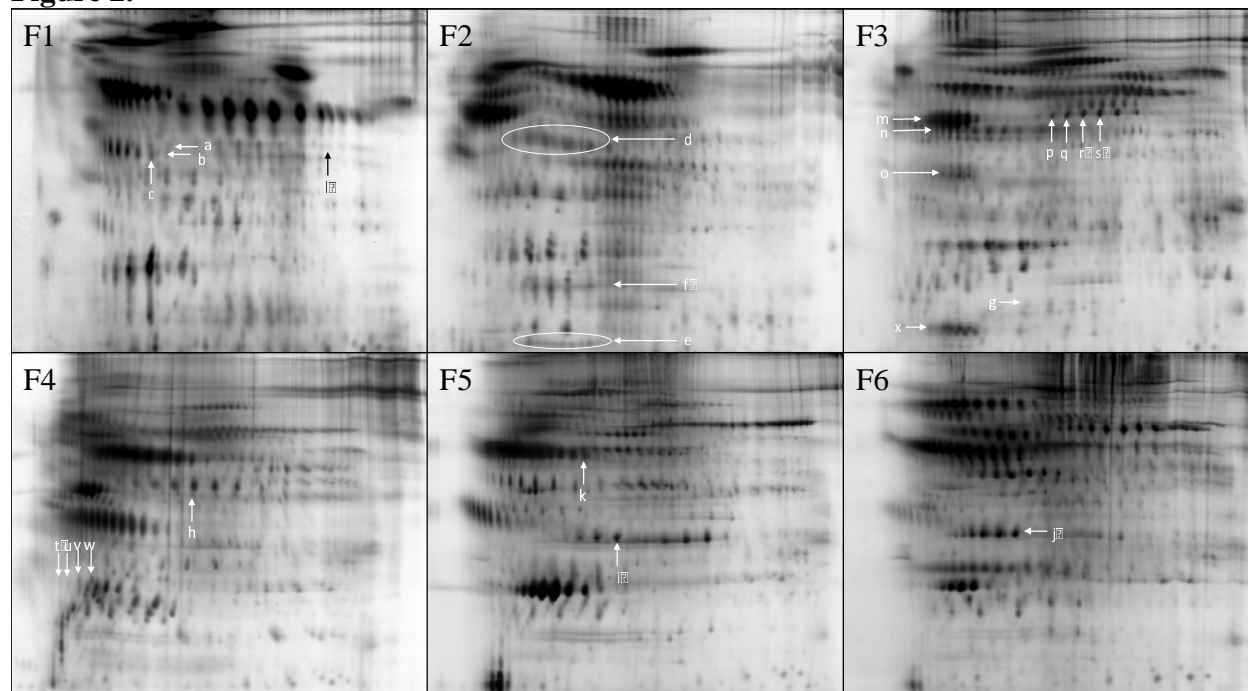
4.



2
3
4

1
2

Figure 2.



3
4
5

Figure 3.

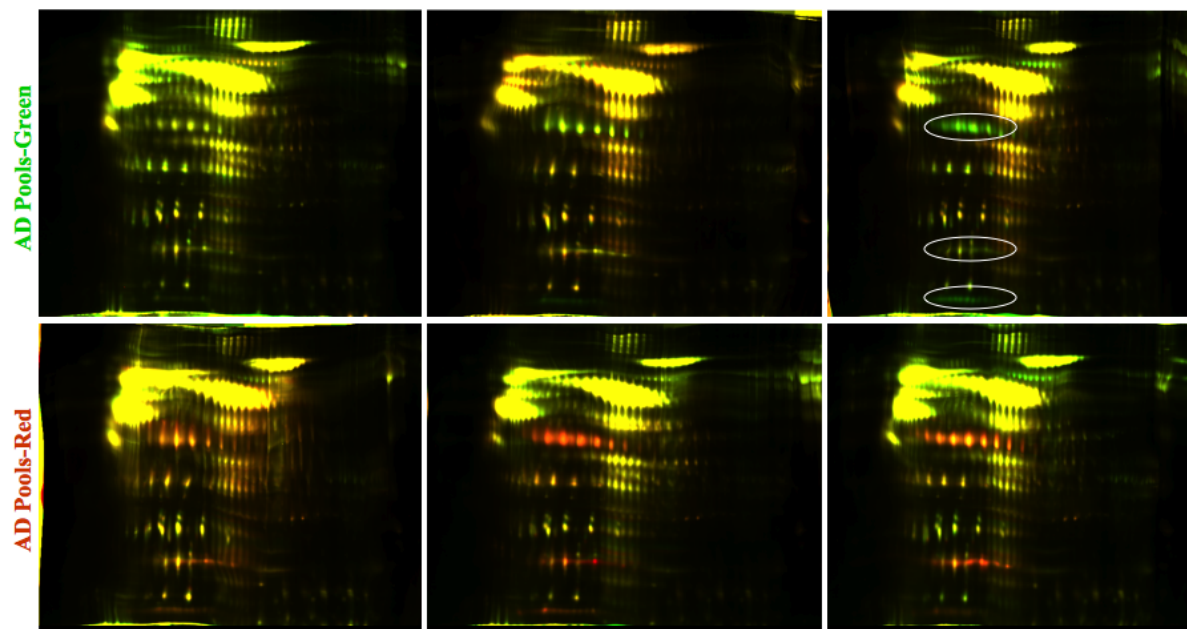


Figure 4.

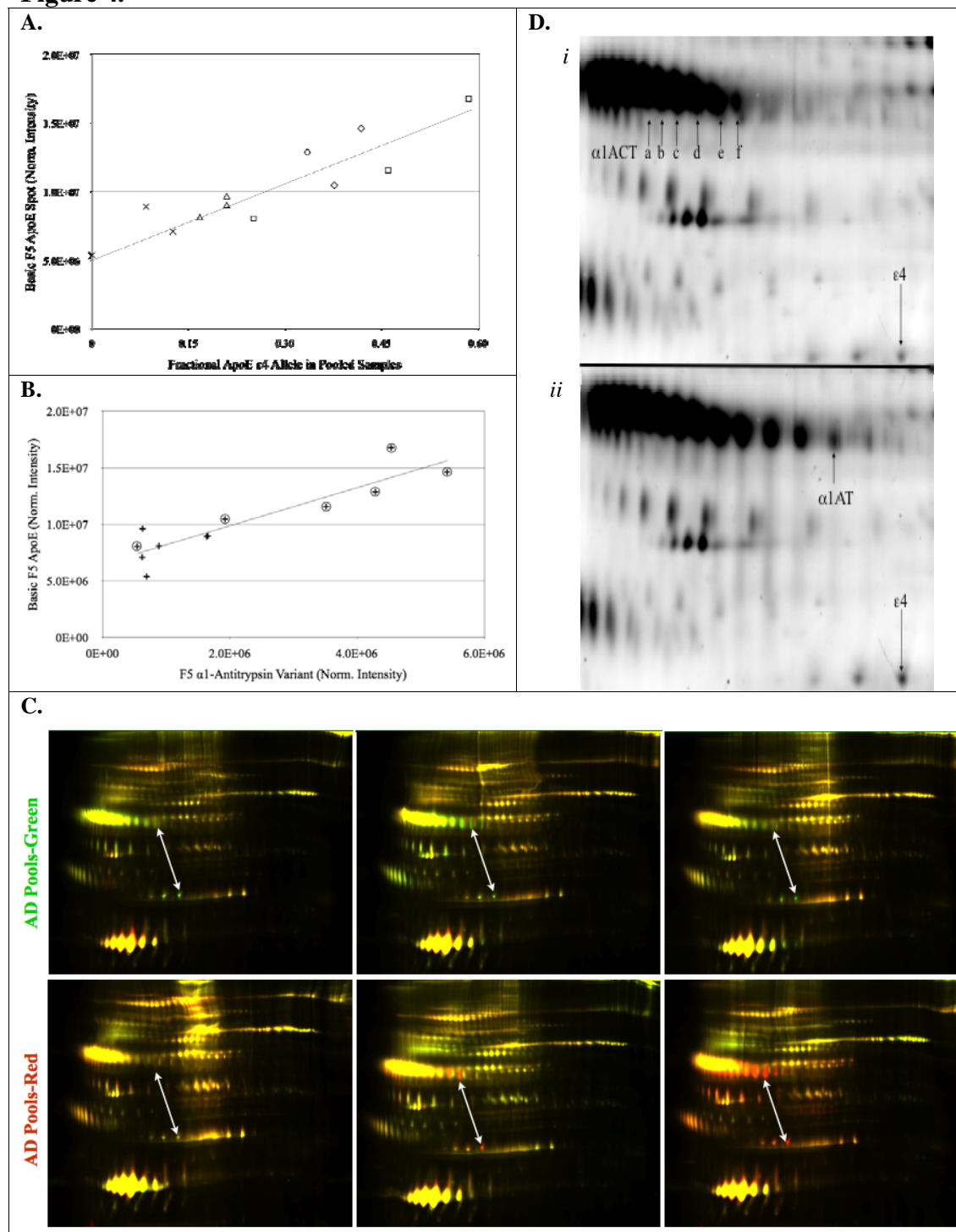
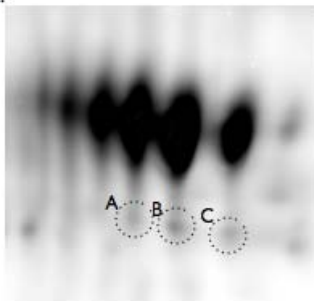


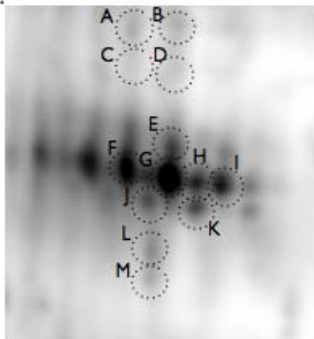
Figure 5.

A.



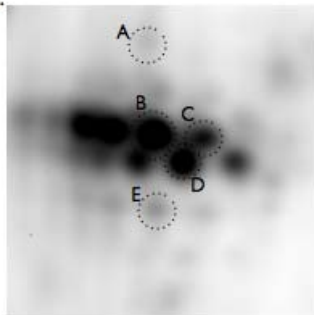
ID	Female Fold Change	p-value	Male Fold Change	p-value	Mascot	# pep/cover%
A	2.4 up in FAD	0.0004	2.6 down in MAD	0.269	356	11/29
B	2.3 up in FAD	0.0015	2.5 down in MAD	0.00694	287	11/20
C	1.5 up in FAD	0.0499	1.5 down in MAD	0.15	325	9/25

B.



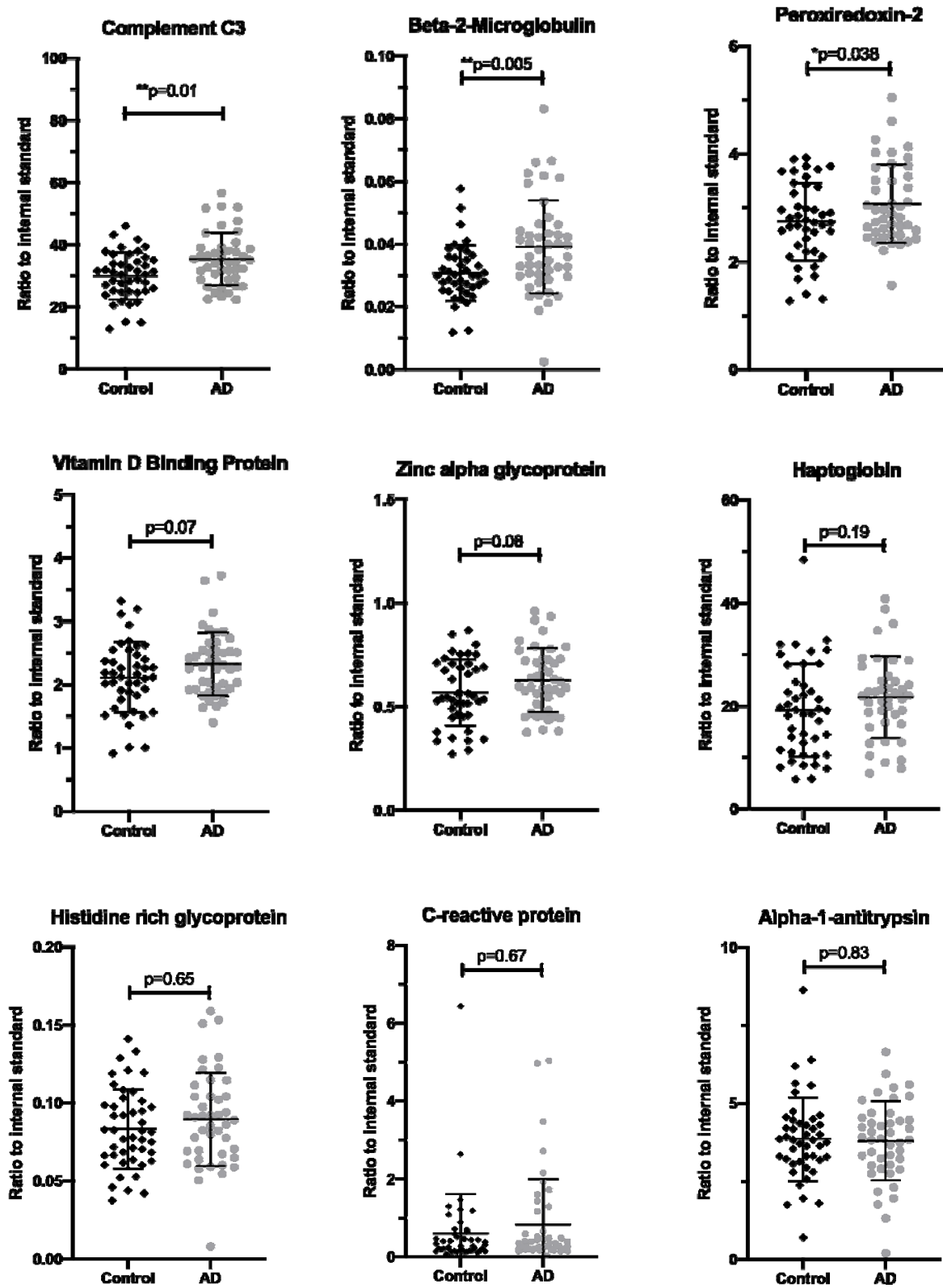
A	2.6 up in FAD	0.0164	2.5 down in MAD	0.0261	na	na
B	2.1 up in FAD	0.0148	2.4 down in MAD	0.009	52	4/8
C	2.7 up in FAD	0.013	2.9 down in MAD	0.00821	36	3/5
D	2.3 up in FAD	0.0145	2.5 down in MAD	0.00822	36	2/3
E	1.8 up in FAD	0.076	2.0 down in MAD	0.00965	150	7/18
F	2.2 up in FAD	0.063	2.3 down in MAD	0.0661	279	8/22
G	2.0 up in FAD	0.0411	2.2 down in MAD	0.0444	240	7/15
H	2.4 up in FAD	0.042	2.4 down in MAD	0.0415	178	8/21
I	2.0 up in FAD	0.0228	1.5 down in MAD	0.272	173	7/18
J	2.1 up in FAD	0.0302	2.4 down in MAD	0.00899	196	5/13
K	2.1 up in FAD	0.0311	2.3 down in MAD	0.0318	261	7/18
L	2.1 up in FAD	0.0289	2.3 down in MAD	0.0169	79	5/13
M	2.0 up in FAD	0.0228	1.5 down in MAD	0.272	93	6/15

C.



A	1.8 up in FAD	0.0064	1.9 down in MAD	0.0475	38	2/6
B	1.6 up in FAD	0.00155	1.7 down in MAD	0.0466	108	4/8
C	1.5 up in FAD	0.0108	1.4 down in MAD	0.253	62	3/6
D	1.7 up in FAD	0.00142	1.8 down in MAD	0.0401	240	7/15
E	1.9 up in FAD	0.00358	1.9 down in MAD	0.0122	na	na

1 Figure 6.



2

