

Fatigue in perinatal stroke is associated with resting-state functional connectivity

Wrightson, J.G.^{1,2}, Carlson, H.L.^{1,3,4}, Condliffe, E.G.^{1,2,3,4} and Kirton, A.^{1,2,3,4}.

1. Hotchkiss Brain Institute, University of Calgary, Calgary, AB, Canada
2. Department of Clinical Neurosciences, Cumming School of Medicine, University of Calgary, Calgary, AB, Canada
3. Alberta Children's Hospital Research Institute, Calgary, AB Canada
4. Department of Pediatrics, Cumming School of Medicine, University of Calgary, Calgary, AB, Canada

Corresponding Author: Dr. Adam Kirton
Email: Adam.Kirton@Albertahealthservices.ca
Phone: +1.403.955.7816

Abstract

Fatigue is prevalent in youth with perinatal stroke, but the causes are unclear. Predictive coding models of adult post-stroke fatigue suggest that fatigue may arise from dysfunction in predictive processing networks. To date, the association between fatigue and neural network connectivity in youth with perinatal stroke has not been examined. The present study examined the association between fatigue and the functional connectivity of predictive processing neural networks, measured using resting-state functional magnetic resonance imaging, in individuals with perinatal stroke. Participants who reported experiencing fatigue had weaker functional connectivity between the non-lesioned middle frontal and supramarginal gyri and between the non-lesioned intracalcarine cortex and the lesioned paracingulate cortex. In contrast, participants reporting fatigue had stronger functional connectivity between the lesioned inferior temporal gyrus and non-lesioned insula. These results suggest that fatigue in youth with hemiparetic cerebral palsy caused by perinatal stroke is associated with the functional connectivity of hubs previously associated with predictive processing and fatigue. These results suggest potential cortical and behavioral targets for the treatment of fatigue in individuals with perinatal stroke.

Keywords: Cerebral palsy, Resting-state fMRI, Predictive coding, Active inference

Introduction

Perinatal stroke is the leading cause of hemiparetic cerebral palsy and results in lifelong physical disability^{1,2}. Fatigue is common in individuals with hemiparetic cerebral palsy, including those with perinatal stroke³⁻⁶. Fatigue significantly reduces health-related quality of life in individuals with cerebral palsy⁷⁻⁹, and reducing fatigue is caregivers' highest priority¹⁰. However, the mechanisms which give rise to fatigue are not well understood, and consequently, there are few evidence-based treatments.

Predictive coding models of fatigue suggest that insult to the central nervous system causes an incongruity between the efferent sensory predictions encoded by the brain's generative model of the body and the afferent sensory prediction errors that arise from an action^{11,12}. It has been proposed that dysfunction in the predictive processing networks gives rise to fatigue¹¹. Predictive processing theoretical frameworks suggest that the brain contains a generative model of the body-state¹³. Within these frameworks, fatigue arises from an ongoing and unresolvable discrepancy

between the brain's prediction of the body-state and the afferent sensory information signalling the actual-body state (the prediction)^{11,12,14}. These prediction errors signal a failure of the brain to predict the body state, i.e. an inability to maintain homeostasis. This ongoing discrepancy between predicted and actual body state is consciously perceived as the feeling of fatigue, which acts as a signal for allostatic behavioral adjustment: rest. Two predictive coding accounts of fatigue have been proposed; the first suggests that fatigue arises from a failure to attenuate from proprioceptive or exteroceptive sensory prediction errors, specifically during motor actions¹⁵. An opposing account posits that fatigue arises through the metacognitive awareness of an ongoing discrepancy between predicted and actual interoceptive information, processed in an interoceptive predictive processing network¹². These two accounts are often presented as disparate, assigning fatigue to either interoceptive or exteroceptive and proprioceptive predictive processing (see Kuppuswamy 2021; Manjaly et al. 2019 for reviews). However, these systems likely interact to predict proprioceptive and interoceptive signals in the pursuit of goal-states¹⁶ and thus are both likely to contribute to the perception of fatigue¹⁷.

Unlike in adult stroke, where pre-stroke conditions and post-stroke responses are frequently assumed to contribute to the subsequent development of fatigue^{18,19}, fatigue in perinatal stroke is likely to be a consequence of the abnormal development of the brain⁶. The interoceptive predictive processing account identifies several regions in the brain that may compose a 'fatigue network,' including the anterior insula, the anterior cingulate cortex and frontal/prefrontal areas¹². The exteroceptive and proprioceptive predictive coding account of fatigue predicts that in addition to the insula, networks comprised of sensorimotor, visual, and attentional hubs also contribute to fatigue¹⁵. There is emerging evidence from resting-state functional magnetic resonance imaging studies that connectivity between these areas is associated with fatigue perception²⁰⁻²². Proprioception is impaired in individuals with perinatal stroke and is shown to be related to connectivity of sensory networks^{23,24}, supporting that the connectivity in these networks may contribute to fatigue. Following the recent suggestion that fatigue likely arises from *both* interoceptive and proprioceptive predictive processing¹⁷, many of the hubs whose connectivity is associated with fatigue have also been suggested to be hubs within a global predictive processing network²⁵⁻²⁷. At present, the relationship between fatigue in individuals with perinatal stroke and the functional connectivity of these networks has not been studied.

The aim of the present study was to examine the associations between fatigue and functional brain connectivity in individuals with perinatal stroke and compare this to the functional

connectivity of typically developed youth. We have previously reported that corticospinal excitability was associated with fatigue severity in individuals with perinatal stroke ⁶. Thus, we hypothesized that the functional connectivity of the networks involved in proprioceptive and exteroceptive predictive processing would be associated with fatigue severity.

Results

Seventy-five participants were identified through the Alberta Perinatal Stroke Project database. Of these, eleven were ineligible due to incomplete data, and four were removed due to excessive head motion in the scanner. The data for 60 stroke participants and 59 TDC were included in the analysis. Participant demographics and outcomes are summarized in Table 1. Lesion overlay maps for AIS participants are shown in Figure 1. The median age for the full sample was 11 years, range 7-19 years, and 35% were female. Forty-five percent (27/60) of the participants with perinatal stroke reported experiencing problems with fatigue (PEDSQL-CP fatigue score ≤ 68.75) and were assigned to the "Fatigued" group ⁶ and the remaining 33 participants were assigned to the "Not Fatigued" group. There was no difference in age between the stroke groups. TDC were significantly older than the "Not Fatigued" group (see Table 1). There were no other differences in demographics between groups. ($p > 0.05$).

Table 1 Here please

Figure 1 Here please

Fisher-transformed correlation coefficients for ROI-to-ROI connections, age, PSOM score and stroke type (AIS or PVI) were entered into the model. The model selected three FC values: FC between the non-lesioned supramarginal gyrus and middle frontal gyrus, the non-lesioned insula and lesioned inferior temporal gyrus, and the lesioned paracingulate cortex and non-lesioned intracalcarine cortex. These connections are shown in Figure 2.

Figure 2. Here please

Associations between Fatigue and FC

While associations between fatigue and FC were strong (as identified previously), the directionality of such associations differed by ROI-ROI pair. In participants with perinatal stroke, fatigue (PEDSQL score) was positively associated with FC between the non-lesioned middle frontal gyrus and supramarginal gyrus ($\beta=19.6$, $SE=6.4$, $p=0.002$, Figure 3A) and between the lesioned paracingulate gyrus and the non-lesioned intracalcarine cortex ($\beta=31.6$, $SE=12.6$, $p=0.015$, Figure 3C). In contrast, fatigue was negatively associated with FC between the non-lesioned insula and the lesioned inferior temporal gyrus ($\beta=-42.3$, $SE=7.7$, $p<0.001$, Figure 3B). Age, stroke type or sensorimotor function (PSOM) were not identified as predictors.

Figure 3. Here please

Differences in functional connectivity between groups

Results from the Welch's ANOVA for the Fisher-transformed correlations selected by the elastic net regression for fatigued, not fatigued and TDC participants are shown in Table 2 and Figure 4. Welch's ANOVA revealed a difference between groups for all three FC ROI pairs. FC between the non-lesioned middle frontal gyrus and supramarginal gyrus was stronger in not fatigued participants compared to fatigued participants ($p_{(fdr)}=0.015$, $d=0.67$), and TDC ($p_{(fdr)}=0.002$, $d=1.88$), whilst it was stronger in fatigued participants than in TDC ($p_{(fdr)}=0.002$, $d=1.14$). The negative FC between the non-lesioned insula and lesioned temporal gyrus was stronger in not fatigued participants compared to fatigued participants ($p_{(fdr)}=0.002$, $d=0.88$) and TDC ($p_{(fdr)}=0.002$, $d=1.12$) but not different between fatigued participants and TDC ($p_{(fdr)}=0.273$, $d=0.35$). The negative FC between the non-lesioned intracalcarine cortex and the lesioned paracingulate cortex was stronger in fatigued participants compared to not fatigued ($p_{(fdr)}=0.045$, $d=0.56$), and TDC participants ($p_{(fdr)}=0.002$, $d=0.94$), and not different between not fatigued and TDC participants ($p_{(fdr)}=0.149$, $d=0.30$).

Table 2 here please.

Figure 4. Here please

1

2 Discussion

3 The aim of the present study was to examine potential associations between fatigue and resting-
4 state functional connectivity in the brains of individuals with perinatal stroke. Compared to
5 participants who were not fatigued, those who reported problems with fatigue had weaker
6 connectivity between the non-lesioned middle frontal gyrus and posterior supramarginal gyrus,
7 and between the non-lesioned intracalcarine cortex and lesioned paracingulate gyrus. In contrast,
8 functional connectivity between the non-lesioned anterior insula cortex and the lesioned inferior
9 temporal gyrus was stronger in individuals experiencing fatigue. This study is the first to explicitly
10 test the relationship between functional brain connectivity and perceived fatigue in young people
11 with perinatal stroke. These results suggest that fatigue is associated with the functional
12 connectivity of the interoceptive and salience prediction networks in individuals with perinatal
13 stroke.

14

15 Here, we provide evidence showing that fatigue in perinatal stroke is associated with altered
16 connectivity between hubs in previously identified global predictive coding networks²⁵⁻²⁷. These
17 include hubs frequently linked to proprioceptive and interoceptive processing and allostatic control
18²⁸⁻³⁰. Within predictive coding frameworks, fatigue is suggested to arise from an ongoing and
19 unresolvable discrepancy between the brain's prediction of the body-state and the afferent
20 sensory information signalling the actual-body state, the prediction errors^{11,12,14}. Unresolvable
21 prediction errors signal a failure for the brain to predict the body state, i.e. an inability to maintain
22 allostatic control, consciously perceived as the feeling of fatigue¹². We found that individuals
23 experiencing more fatigue had weaker FC between the non-lesioned supramarginal gyrus and
24 middle frontal gyrus compared to those who did not experience fatigue. Recent evidence suggests
25 that these areas are structurally connected via the superior longitudinal fasciculus³¹. Perhaps
26 surprisingly, the weaker connectivity seen in fatigued participants reflected the pattern in typically
27 developed participants, where there was virtually no functional connectivity between these areas.
28 In adults and children with stroke, the supramarginal gyrus and middle frontal gyrus have been
29 related to successful proprioceptive processing³²⁻³⁴, while individuals with perinatal stroke may
30 have impaired proprioceptive function^{23,24}. Within the predictive processing framework, both areas
31 are associated with both prediction formation and error^{26,27}. When comparing participants who
32 did not experience fatigue with TDC, we speculate that stronger functional connectivity between
33 these areas seen in not fatigued participants represents possible compensatory neural plastic

34 alterations related to impaired proprioceptive prediction and prediction error processing.
35 Kuppuswamy ¹¹ suggests that fatigue arises from dysfunction in the systems involved in
36 processing proprioceptive prediction errors, suggesting that the weaker functional connectivity, or
37 an inefficient compensation mechanism, between these areas may be related to the increased
38 perceptions of fatigue.

39
40 A similar pattern can be observed in the functional connectivity between lesioned inferior temporal
41 gyrus and non-lesioned insula, wherein not fatigued participants had stronger (negative)
42 functional connectivity than fatigued participants, who more closely resembled typically developed
43 participants. The insula, cingulate and inferior temporal gyrus are suggested to be hubs within a
44 neural network that supports interoceptive processing and allostasis ³⁰. An alternative predictive
45 processing account of fatigue suggests that fatigue arises from continued and unresolvable
46 interoceptive, not proprioceptive, prediction errors which signal failures in allostatic control ¹².
47 Again, when interpreted through the predictive processing theoretical framework, the stronger
48 connectivity seen in not fatigued participants suggests adaptive plasticity supporting interoceptive
49 predictive processing. The present data indicate the involvement of both proprioceptive and
50 interoceptive predictive processing in the development of fatigue in individuals with perinatal
51 stroke. Although the proprioceptive and interoceptive predictive processing accounts of fatigue
52 are often contrasted ^{14,15}, it is more likely that fatigue can arise from ongoing and unreconcilable
53 proprioceptive and interoceptive prediction errors, which both signal challenges to allostatic
54 control ¹⁷. Since fatigue is believed to be the affective response signalling ongoing unresolvable
55 prediction errors and thus failure to exert allostatic control, these results support the predictive
56 processing accounts of fatigue ^{14,15}. At present, there is considerable uncertainty about how
57 predictive processing networks function and much more evidence of the strength and direction of
58 relationships is required before this suggestion can be genuinely considered.

59
60 Somewhat surprisingly, and in contrast to our hypothesis, we did not find any associations
61 between fatigue and the connectivity between primary or secondary sensorimotor areas. This is
62 in contrast to an earlier analysis of this data, where we used a theory-driven approach and placed
63 seeds within these areas ³⁵, as well as our previous study where we used transcranial magnetic
64 stimulation to probe the association between fatigue and corticomotor excitability ⁶ and previous
65 evidence of altered FC within the sensorimotor network associated with motor function ³⁶⁻³⁸.
66 However, this is not to say that functional connectivity within sensorimotor areas is not associated
67 with fatigue, indeed we have shown that it is ²⁹. Instead, what the current data show is that of

68 more relevance to the perception of fatigue in individuals with perinatal stroke is the connectivity
69 of hubs within predictive processing networks.

70
71 This study has some limitations which should be acknowledged. We have interpreted our results
72 using the predictive coding theories of the brain and affect. While our data support these models,
73 we did not measure the activity of this network during an action³⁹, nor did we have a measure of
74 predictive coding during performance⁴⁰. These are the necessary next steps in examining fatigue
75 in youth with perinatal stroke. Although we applied post-hoc corrections for head movement, fMRI
76 remains a challenging technique in a pediatric population, and we were required to remove
77 several participants from our sample. The replication of these effects in adults with perinatal stroke
78 may overcome this limitation and provide a method to replicate and extend these results. Our
79 sample was composed of participants capable of completing an MRI, which is necessarily the
80 less disabled and higher functioning portion of the perinatal stroke population.

81 Conclusion

82 We found that fatigue in individuals with perinatal stroke was associated with altered functional
83 connectivity of a global predictive processing network. These findings provide interesting avenues
84 for both future research and therapeutic interventions. The effects of emerging therapies, such as
85 novel training paradigms and non-invasive brain stimulation, on both neural functional connectivity
86 and fatigue are warranted.

87

88 Method and Materials

89 Participants

90 Participants were recruited via the Alberta Perinatal Stroke Project⁴¹ and the Healthy Infants and
91 Children Clinical Research Program (www.hiccupkids.ca) research cohorts at the Alberta
92 Children's Hospital. Inclusion criteria for cases were age 6-19 years; term birth; magnetic
93 resonance imaging (MRI)-confirmed unilateral perinatal arterial ischemic stroke (AIS) or
94 periventricular venous infarction (PVI), symptomatic hemiparetic cerebral palsy including
95 Pediatric Stroke Outcome Measure >0.5; Manual Ability Classification Scale levels I-IV. Inclusion
96 criteria for typically developed controls (TDC) were right-handed, ages 6-19 years, and no
97 neurological conditions, medications, or MRI contraindications. Participants and parents provided

98 written informed assent/consent. Experiments were carried out with the approval of the Research
99 Ethics Board at the University of Calgary and in accordance with the declaration of Helsinki ⁴².

100 Fatigue

101 Self-reported fatigue was assessed in participants with perinatal stroke using the fatigue subscale
102 of the Pediatric Quality of Life Inventory 3.0 cerebral palsy module (PEDSQL-CP), a validated
103 measure of quality of life in children with CP ⁴³. The fatigue subscale consists of four statements:
104 "I feel tired," "I feel physically weak (not strong)," "I rest a lot," and "I don't have enough energy to
105 do things that I like to do." Individuals were asked to give a rating of 0-4 for each statement if they
106 never (0), almost never (1), sometimes (2), often (3), or almost always (4) experienced a problem
107 with the four areas of fatigue highlighted in the statements. Parents assisted children under eight
108 years with the rating using the PEDSQL 3.0 CP module parent report for young children. The
109 PEDSQL scores for fatigue were reverse scored and linearly transformed to a 0 to 100 scale ⁴³.
110 The average score across all categories in each subscale was calculated. Lower scores in each
111 subscale represent higher levels of fatigue. Participants were classified as experiencing fatigue if
112 they scored ≤ 68.75 , indicating a problem with at least two or more of the categories of fatigue, or
113 if they scored 4 ("almost always" a problem) for one of the categories ⁵.

114

115 MRI collection

116 MRI sequences were acquired according to a standardized perinatal stroke neuroplasticity
117 protocol at the Alberta Children's Hospital Diagnostic Imaging Suite using a 3.0 Tesla GE
118 MR750w MRI scanner (GE Healthcare, Waukesha, WI) with an MR Instruments 32-channel head
119 coil. High-resolution T1-weighted anatomical images were acquired in the axial plane [166
120 contiguous slices; voxel size = 1.0 mm isotropic; repetition time (TR) = 8.5 ms; echo time (TE) =
121 3.2 ms]. Resting-state fMRI acquisition used 150 T2*-weighted whole-brain echo-planar volumes
122 (EPI; 36 interleaved contiguous slices; voxel size = 3.6 mm isotropic; TR/TE = 2000/30 ms).
123 Participants were told to fixate on a centrally presented cross. Images were reoriented such that
124 the stroke was located in the right hemisphere for all patients so that lesioned hemispheres of
125 cases corresponded to non-dominant hemispheres in controls.

126

127 Functional connectivity analyses

128 Resting-state functional connectivity analyses were performed using the SPM12 (Statistical
129 Parametric Mapping, Wellcome Trust, UCL, UK) Functional Connectivity Toolbox (CONN) ⁴⁴ in

130 Matlab version r2018a (Mathworks, Natick, MA, USA). Slice timing correction, realignment, and
131 co-registration were performed, and head motion parameters were estimated. Co-registered
132 images were segmented using subject-specific tissue probability maps. Images were normalized
133 into Montreal Neurological Institute (MNI) space via direct non-linear transformations using the
134 standard 152-average template. Direct normalization results in structural and functional volumes
135 being separately normalized to MNI space. Images were then smoothed with a 6 mm³ full-width
136 at half-maximum Gaussian kernel. Head motion exceeding 0.9 mm of translational head
137 movement and global intensity outliers (z-score>5) were identified using the Artifact Repair
138 Toolbox ⁴⁵. Time courses of blood oxygenation level-dependent (BOLD) responses were
139 extracted for the GM, CSF and WM. The CSF, WM and lesion time courses were regressed from
140 the general linear regression model (GLM). Outlier volumes and head motion were additionally
141 de-weighted in the GLM.

142
143 In a preliminary analysis of this data ³⁵, we performed both ROI-to-ROI and seed to voxel analysis
144 in eight predetermined ROI's within the sensorimotor network. However, based on feedback to
145 this preprinted analysis, and subsequent experimental and theoretical advances in the study of
146 fatigue ^{15,21,22}, we decided to adopt a data-driven analysis plan to reduce possible bias in seed
147 selection.

148
149 Individuals with perinatal stroke often have widespread morphological and functional differences
150 in brain structure and development (⁴⁶ for a review). Because of these differences, we could not
151 perform component identification whole-brain connectivity analyses (e.g., independent
152 component analysis, principal component analysis). Instead, we used a machine learning ROI-
153 to-ROI approach. All ROIs defined using the default Harvard-Oxford Atlas within CONN were
154 included in the analysis, except those in the cerebellum and vermis. To reduce the number of FC,
155 the two ROIs for the cerebellum were selected from the CONN ICA analysis of the Human
156 Connectome Project dataset ⁴⁴, resulting in 108 ROIs entered into the analysis. BOLD signal time
157 series were calculated using the average of all voxels within the ROI. Fisher-transformed
158 correlation coefficients were interpreted as quantifications of functional connectivity (FC) strength
159 between areas. FC between each of the ROIs were identified in CONN and extracted for data
160 analysis using elastic net regression. FC values between ROIs identified as associated with
161 fatigue in children with perinatal stroke using the elastic-net regression model (described below)
162 were subsequently quantified in TDC to compare functional connectivity between participant
163 groups.

164 Sensorimotor function

165 We included a measure of sensorimotor function to quantify whether function mediated the
166 relationship between fatigue and the connectivity of the sensorimotor prediction network.
167 Sensorimotor function was assessed via subscales of the Pediatric Stroke Outcome Measure
168 (PSOM). The score for the more affected hand was used. The PSOM is a reliable and valid
169 measure of neurological function following stroke in children ⁴⁷ and the sensorimotor subscale
170 evaluations include motor, visual, hearing, and somatosensory function ⁴⁸.

171 Data and statistical analysis

172 Statistical analyses were performed with the R statistical software package ⁴⁹. Analysis of
173 variance (ANOVA), chi-square and Mann-Whitney U tests were used to compare the
174 demographic data. To identify FC between ROIs that was associated with fatigue, stroke
175 participants' Fisher-transformed coefficients (N = 5778 ROI-to-ROI connections), demeaned age,
176 PSOM score and stroke type (AIS or PVI infarction) were entered into an elastic net regularized
177 regression model, with fatigue score as the outcome variable. Ten-fold cross-validated elastic net
178 regression was performed using the 'glmnet' package ⁵⁰. Elastic net regression is a regularized
179 regression technique, used for variable selection in high dimension low N studies, which uses a
180 penalty term to shrink regression coefficients of multiple predictors, setting some to 0 and leaving
181 only the most relevant predictors in the model. A subsequent robust linear regression model
182 containing predictors identified in the model was used to determine model goodness-of-fit and
183 estimate coefficients. Connectivity identified in the elastic net model was compared between
184 groups (Fatigued, Not fatigued, TDC) using Welch's analysis of variance (ANOVA). Significant
185 main effects were followed up using *post hoc* Welch's t-tests. Shapiro-Wilk's test of normality was
186 used to assess the distribution of the residuals. Cohen's *d* and its associated 95% confidence
187 were used as an estimate of the effect sizes for differences in connectivity between groups. The
188 threshold to reject the null hypothesis was set at $p < 0.05$. Where necessary, the false-discovery
189 rate was adjusted to control for multiple comparisons ⁵¹.

190

191 Funding Statement:

192 This work was supported by funding from the Canadian Institutes of Health Research (CIHR).

193

194

195

196 Data availability statement

197 Raw data is available upon reasonable request from the corresponding author. Code used for
198 analysis is available from the Open Science Framework (<https://osf.io/u4jvh>).

199

200 Author Contributions:

201 Author contributions included conception and study design (JGW, HC, EGC, AK) data collection
202 and acquisition (HC, AK) statistical analysis (JGW), interpretation of results (JGW, HC, EGC,
203 AK), drafting the manuscript work or revising it critically for important intellectual content (JGW,
204 HC, EGC, AK)) and approval of final version to be published and agreement to be accountable
205 for the integrity and accuracy of all aspects of the work (All authors).

206

207 Compliance with Ethical Standards

208 Experiments were carried out with the approval of the Research Ethics Board at the University
209 of Calgary and in accordance with the declaration of Helsinki ⁴².

210

211

212 Conflicts of Interest

213 The authors have no conflicts of interest to declare

214 Supplementary material

215

216 The following is a description of the results from the first iteration of this study, where the analysis
217 of the association between fatigue core and ROI-ROI FC was constrained to the FC between
218 sensorimotor areas "The model identified two ROI-to-ROI connections as significant predictors of
219 fatigue status. FC between the non-lesioned S1 and lesioned SMA ($\beta = -21.7$, SE = 9.9, $p = 0.032$)
220 and the lesioned and non-lesioned thalamus ($\beta = 15.5$, SE = 7.5, $p = 0.032$) were significant
221 predictors of fatigue score ($R^2 = 0.15$, $F(2,57) = 4.9$, $p = 0.017$, Figure 2).

222 References

- 223 1. Sreenan, C., Bhargava, R. & Robertson, C. M. T. Cerebral infarction in the term newborn:
224 Clinical presentation and long-term outcome. *J. Pediatr.* **137**, 351–355 (2000).
- 225 2. Wu, Y. W. *et al.* Perinatal stroke in children with motor impairment: A population-based
226 study. **114**, 612–619 (2004).
- 227 3. Maher, C. *et al.* Fatigue is a major issue for children and adolescents with physical
228 disabilities. *Dev. Med. Child Neurol.* **57**, 742–747 (2015).
- 229 4. Russchen, H. A. *et al.* Focus on fatigue amongst young adults with spastic cerebral palsy. *J.*
230 *NeuroEngineering Rehabil.* **11**, 161 (2014).
- 231 5. Brunton, L. K. *et al.* More Than Just Adolescence: Differences in Fatigue Between Youth
232 With Cerebral Palsy and Typically Developing Peers. *Ann. Rehabil. Med.* **45**, 197–203
233 (2021).
- 234 6. Wrightson, J. G., Zewdie, E., Kuo, H.-C., Millet, G. Y. & Kirton, A. Fatigue in children with
235 perinatal stroke: clinical and neurophysiological associations. *Dev. Med. Child Neurol.* **62**,
236 234–240 (2020).
- 237 7. Brunton, L. K. Descriptive Report of the Impact of Fatigue and Current Management
238 Strategies in Cerebral Palsy. *Pediatr. Phys. Ther.* **30**, 135–141 (2018).
- 239 8. Brunton, L. K. & Bartlett, D. J. The bodily experience of cerebral palsy: a journey to self-
240 awareness. *Disabil. Rehabil.* **35**, 1981–1990 (2013).
- 241 9. Hilberink, S. R. *et al.* Health issues in young adults with cerebral palsy: towards a life-span
242 perspective. *J. Rehabil. Med.* **39**, 605–611 (2007).
- 243 10. Boyer, E. R., Palmer, M., Walt, K., Georgiadis, A. G. & Stout, J. L. Validation of the Gait
244 Outcomes Assessment List questionnaire and caregiver priorities for individuals with
245 cerebral palsy. *Dev. Med. Child Neurol.* **64**, 379–386 (2022).
- 246 11. Kuppuswamy, A. The fatigue conundrum. *Brain* **140**, 2240–2245 (2017).

- 247 12. Stephan, K. E. *et al.* Allostatic Self-efficacy: A Metacognitive Theory of Dyshomeostasis-
248 Induced Fatigue and Depression. *Front. Hum. Neurosci.* **10**, 550 (2016).
- 249 13. Friston, K. Hierarchical Models in the Brain. *PLOS Comput. Biol.* **4**, e1000211 (2008).
- 250 14. Manjaly, Z.-M. *et al.* Pathophysiological and cognitive mechanisms of fatigue in multiple
251 sclerosis. *J Neurol Neurosurg Psychiatry* jnnp-2018-320050 (2019) doi:10.1136/jnnp-2018-
252 320050.
- 253 15. Kuppuswamy, A. The Neurobiology of Pathological Fatigue: New Models, New Questions.
254 *The Neuroscientist* 1073858420985447 (2021) doi:10.1177/1073858420985447.
- 255 16. Pezzulo, G., Rigoli, F. & Friston, K. J. Hierarchical Active Inference: A Theory of Motivated
256 Control. *Trends Cogn. Sci.* **22**, 294–306 (2018).
- 257 17. Greenhouse-Tucknott, A. *et al.* Toward the unity of pathological and exertional fatigue: A
258 predictive processing model. *Cogn. Affect. Behav. Neurosci.* (2021) doi:10.3758/s13415-
259 021-00958-x.
- 260 18. Doncker, W. D., Dantzer, R., Ormstad, H. & Kuppuswamy, A. Mechanisms of poststroke
261 fatigue. *J Neurol Neurosurg Psychiatry* jnnp-2017-316007 (2017) doi:10.1136/jnnp-2017-
262 316007.
- 263 19. Wu, S., Mead, G., Macleod, M. & Chalder, T. Model of Understanding Fatigue After Stroke.
264 *Stroke* **46**, 893–898 (2015).
- 265 20. Baran, T. M., Zhang, Z., Anderson, A. J., McDermott, K. & Lin, F. Brain structural
266 connectomes indicate shared neural circuitry involved in subjective experience of cognitive
267 and physical fatigue in older adults. *Brain Imaging Behav.* **14**, 2488–2499 (2020).
- 268 21. Ondobaka, S., De Doncker, W., Ward, N. & Kuppuswamy, A. Neural effective connectivity
269 explains subjective fatigue in stroke. *Brain* (2021) doi:10.1093/brain/awab287.
- 270 22. Wylie, G. R., Yao, B., Genova, H. M., Chen, M. H. & DeLuca, J. Using functional
271 connectivity changes associated with cognitive fatigue to delineate a fatigue network. *Sci.*
272 *Rep.* **10**, 21927 (2020).

- 273 23. Kuczynski, A. M. *et al.* Sensory tractography and robot-quantified proprioception in
274 hemiparetic children with perinatal stroke. *Hum. Brain Mapp.* **38**, 2424–2440 (2017).
- 275 24. Kuczynski, A. M., Dukelow, S. P., Semrau, J. A. & Kirton, A. Robotic Quantification of
276 Position Sense in Children With Perinatal Stroke. *Neurorehabil. Neural Repair* **30**, 762–772
277 (2016).
- 278 25. D’Astolfo, L. & Rief, W. Learning about Expectation Violation from Prediction Error
279 Paradigms – A Meta-Analysis on Brain Processes Following a Prediction Error. *Front.*
280 *Psychol.* **8**, 1253 (2017).
- 281 26. Ficco, L. *et al.* Disentangling predictive processing in the brain: a meta-analytic study in
282 favour of a predictive network. *Sci. Rep.* **11**, 16258 (2021).
- 283 27. Siman-Tov, T. *et al.* Is there a prediction network? Meta-analytic evidence for a cortical-
284 subcortical network likely subserving prediction. *Neurosci. Biobehav. Rev.* **105**, 262–275
285 (2019).
- 286 28. Feldman Barrett, L. The theory of constructed emotion: an active inference account of
287 interoception and categorization. *Soc. Cogn. Affect. Neurosci.* **12**, 1–23 (2017).
- 288 29. Garfinkel, S. N. & Critchley, H. D. Interoception, emotion and brain: new insights link internal
289 physiology to social behaviour. Commentary on: ‘Anterior insular cortex mediates bodily
290 sensibility and social anxiety’ by Terasawa *et al.* (2012). *Soc. Cogn. Affect. Neurosci.* **8**,
291 231–234 (2013).
- 292 30. Kleckner, I. R. *et al.* Evidence for a Large-Scale System Supporting Allostasis and
293 Interoception in Humand. *Nat Hum Behav* 1–37 (2017) doi:10.1038/s41562-017-0069.
- 294 31. Briggs, R. G. *et al.* Anatomy and White Matter Connections of the Middle Frontal Gyrus.
295 *World Neurosurg.* **150**, e520–e529 (2021).
- 296 32. Findlater, S. E. *et al.* Lesion locations associated with persistent proprioceptive impairment
297 in the upper limbs after stroke. *NeuroImage Clin.* **20**, 955–971 (2018).

- 298 33. Giudice, C., Rogers, E. E., Johnson, B. C., Glass, H. C. & Shapiro, K. A. Neuroanatomical
299 correlates of sensory deficits in children with neonatal arterial ischemic stroke. *Dev. Med.*
300 *Child Neurol.* **61**, 667–671 (2019).
- 301 34. Iandolo, R. *et al.* Neural correlates of lower limbs proprioception: An fMRI study of foot
302 position matching. *Hum. Brain Mapp.* **39**, 1929–1944 (2018).
- 303 35. Wrightson, J. G., Condliffe, E. G., Carlson, H. L. & Kirton, A. Fatigue in perinatal stroke is
304 associated with the functional connectivity of the sensorimotor network. *medRxiv* (2020).
- 305 36. Woodward, K. E. *et al.* Sensory-motor network functional connectivity in children with
306 unilateral cerebral palsy secondary to perinatal stroke. *NeuroImage Clin.* **21**, 101670 (2019).
- 307 37. Saunders, J., Carlson, H. L., Cortese, F., Goodyear, B. G. & Kirton, A. Imaging functional
308 motor connectivity in hemiparetic children with perinatal stroke. *Hum. Brain Mapp.* **40**,
309 1632–1642 (2019).
- 310 38. Carlson, H. L. *et al.* Structural and functional connectivity of motor circuits after perinatal
311 stroke: A machine learning study. *NeuroImage Clin.* **28**, 102508 (2020).
- 312 39. Turner, I. F., Ward, N. S. & Kuppaswamy, A. Fatigue, effort perception and central activation
313 failure in chronic stroke survivors: a TMS and fMRI investigation. *bioRxiv* 821959 (2019)
314 doi:10.1101/821959.
- 315 40. van der Schaaf, M. E. *et al.* Fatigue Is Associated With Altered Monitoring and Preparation
316 of Physical Effort in Patients With Chronic Fatigue Syndrome. *Biol. Psychiatry Cogn.*
317 *Neurosci. Neuroimaging* **3**, 392–404 (2018).
- 318 41. Cole, L. *et al.* Clinical characteristics, risk factors, and outcomes associated with neonatal
319 hemorrhagic stroke: A population-based case-control study. *JAMA Pediatr.* (2017)
320 doi:10.1001/jamapediatrics.2016.4151.
- 321 42. World Medical Association. World Medical Association Declaration of Helsinki: ethical
322 principles for medical research involving human subjects. *JAMA* **310**, 2191–2194 (2013).

- 323 43. Varni, J. W. *et al.* The PedsQL in pediatric cerebral palsy: reliability, validity, and sensitivity
324 of the Generic Core Scales and Cerebral Palsy Module. *Dev. Med. Child Neurol.* **48**, 442
325 (2006).
- 326 44. Whitfield-Gabrieli, S. & Nieto-Castanon, A. Conn: a functional connectivity toolbox for
327 correlated and anticorrelated brain networks. *Brain Connect.* **2**, 125–141 (2012).
- 328 45. Mazaika, P., Hoefl, F., Glover, G. & Reiss, A. Artifact Repair for fMRI Data from High Motion
329 Clinical Subjects. *Hum. Brain Mapp. San Franc. CA USA* (2007).
- 330 46. Kirton, A. *et al.* Perinatal stroke: mapping and modulating developmental plasticity. *Nat.*
331 *Rev. Neurol.* **17**, 415–432 (2021).
- 332 47. Kitchen, L. *et al.* The pediatric stroke outcome measure: a validation and reliability study.
333 *Stroke* **43**, 1602–1608 (2012).
- 334 48. deVeber, G. A., MacGregor, D., Curtis, R. & Mayank, S. Neurologic Outcome in Survivors of
335 Childhood Arterial Ischemic Stroke and Sinovenous Thrombosis. *J. Child Neurol.* **15**, 316–
336 324 (2000).
- 337 49. R Development Core Team, R. *R: A language and environment for statistical computing.* (R
338 foundation for statistical computing Vienna, Austria, 2011).
- 339 50. Friedman, J., Hastie, T. & Tibshirani, R. Regularization Paths for Generalized Linear Models
340 via Coordinate Descent. *J. Stat. Softw.* **33**, 1–22 (2010).
- 341 51. Benjamini, Y., Krieger, A. M. & Yekutieli, D. Adaptive linear step-up procedures that control
342 the false discovery rate. *Biometrika* **93**, 491–507 (2006).

343
344

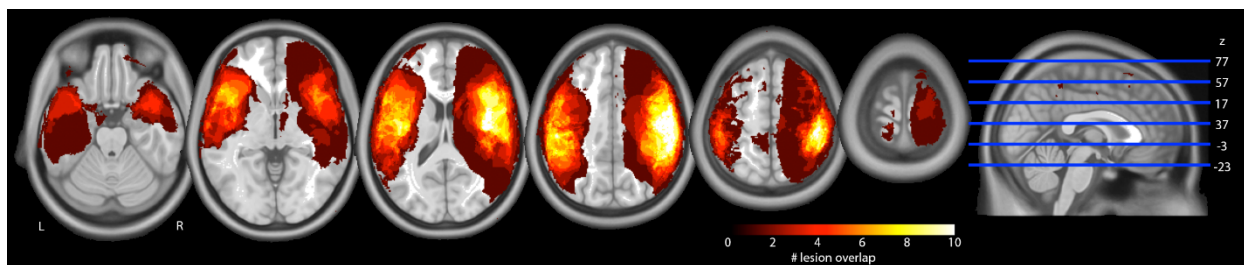
Table 1. Demographics characteristics and fatigue scores

	Stroke (N = 60)	Fatigued (N = 27)	Not fatigued (N = 33)	TDC (N=59)
Sex (Female: Male)	21:39	11:16	10:23	29:30
Age (years, mean±SD)	11.5±2.8	11.5±2.5	11.5±3.1	14.2±3.0
Stroke side (Left: Right)	37:23	19:13	18:10	NA
Stroke type (Arterial: Periventricular Venous Infarction)	29:31	15:12	17:16	NA
Fatigue (PEDSQL, median [IQR])	68.8 [32.8]	50 [18.8]	81.3 [25.0]	NA

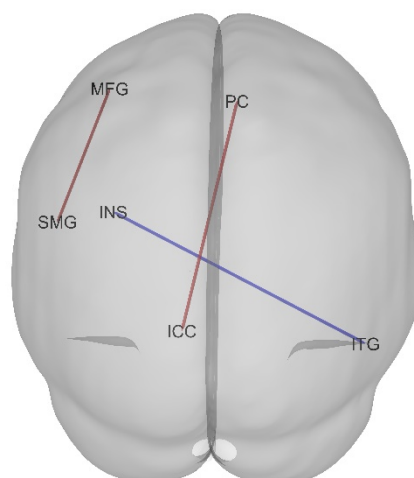
Table 2. Means + SD for Fisher-transformed correlations for the ROI-to-ROI analysis

	Fatigued (N = 27)	Not Fatigued (N = 33)	TDC (N = 59)	Group differences (Welch's ANOVA)
Non-lesioned (left) middle frontal gyrus – supramarginal gyrus (posterior)	0.27±0.30	0.50±0.34	-0.03±0.23	$F_{(2,51)}=32.6, p<0.001$
Non-lesioned (left) insula – lesioned (right) inferior temporal gyrus	0.02±0.21	-0.15±0.18	0.10±0.25	$F_{(2,65)}=16.2, p<0.001$
Non-lesioned intracalcarine cortex – lesioned paracingulate cortex	-0.17±0.15	-0.06±0.24	0.02±0.21	$F_{(2,65)}=10.8, p<0.001$

In TDC; lesioned = right, non=lesioned = left, TDC; typically developed control participants

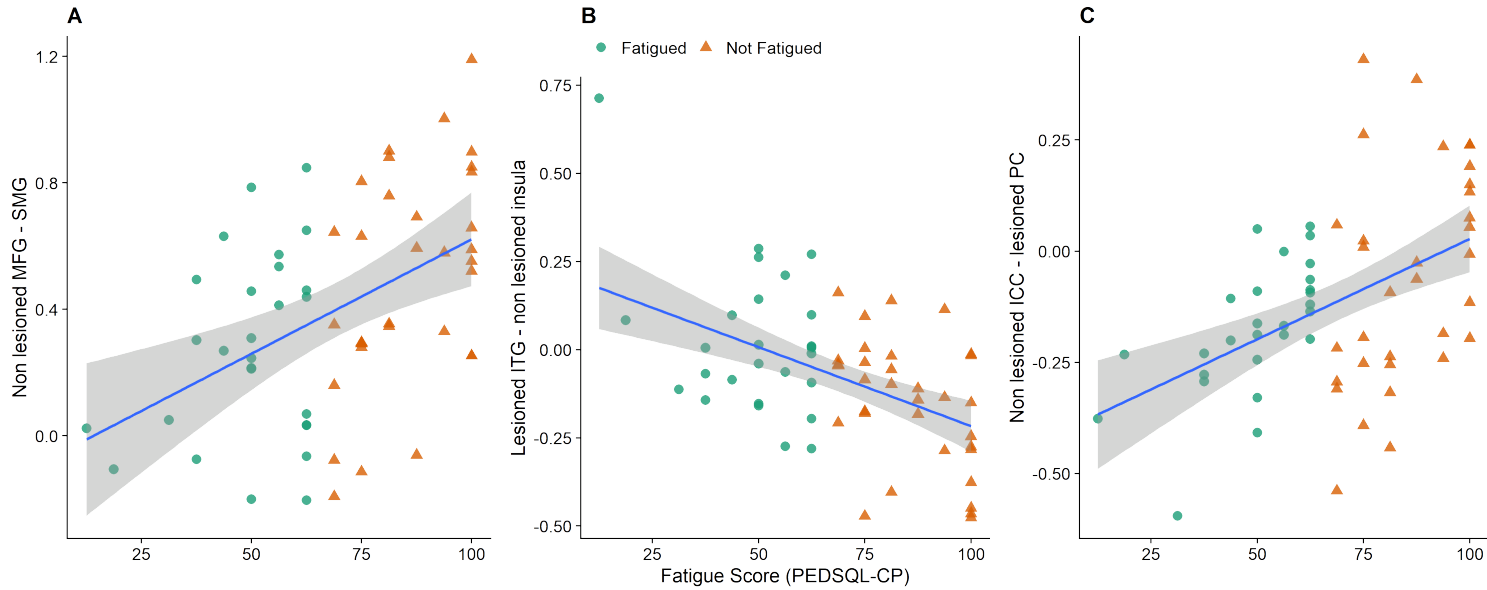


346
347 Fig. 1. Lesion overlay maps for participants with arterial (AIS) strokes, shown are heat maps
348 corresponding to the number of patients that have a lesion in that area overlaid on axial slices
349 from a standard template in MNI space (MNI152). White shading indicates most lesion overlap
350 and dark red least overlap. Images are presented in neurological convention (i.e., right
351 hemisphere is on the right side).
352



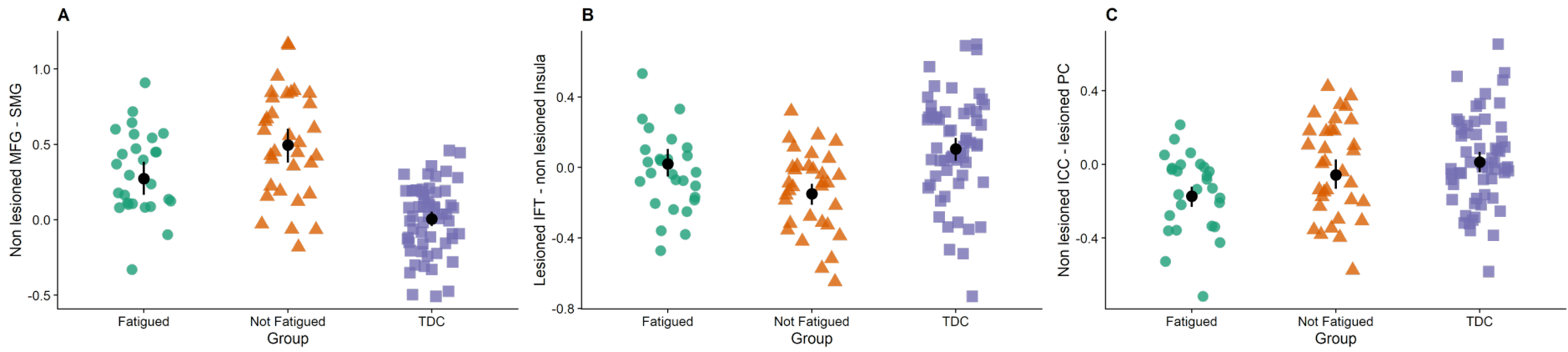
353
354 Figure 2. FC identified by the 10-fold cross-validated elastic net regression. Red lines illustrate a
355 positive correlation, where a lower PEDSQL fatigue score (indicating more severe fatigue) was
356 associated with weaker FC. The lesioned hemisphere is displayed on the left of this figure.
357 MFG; middle frontal gyrus, SMG; supramarginal gyrus, ICC; intra-calcarine cortex, PC;
358 paracingulate gyrus, INS; insula cortex, ITG; inferior temporal gyrus.
359

360
361



362
363
364
365
366

Figure 3.
Associations between FC identified by the elastic net regression and fatigue (PEDSQL fatigue score). A lower fatigue score represents more severe fatigue. MFG; middle frontal gyrus, SMG; supramarginal gyrus, ICC; intracalcarine cortex, PC; paracingulate gyrus, ITG; Inferior temporal gyrus.



367
 368
 369
 370
 371
 372

Figure 4. Fisher-transformed correlation coefficients for the connectivity between the A) non-lesioned primary middle frontal gyrus (MFG) and supramarginal gyrus (SMG), B) lesioned inferior temporal gyrus (ITG) and non-lesioned insula and C) between the non-lesioned intracalcarine cortex (ICC) and lesioned paracingulate cortex (PC). The black circle and error bars represent the mean ± 95% confidence interval. TDC; Typically developed controls. * represents a different ($p < 0.05$) FC compared to the not fatigued group.