

A large decrease in the magnitude of seasonal fluctuations in mortality explains part of the increase in longevity in Sweden during the 20th century.

Anders Ledberg*

Department of Public Health Sciences, Stockholm University
SE-106 91 Stockholm, Sweden

April 10, 2020

Abstract

BACKGROUND: Mortality rates are known to depend on the seasons and in temperate climates rates are highest during winter. The magnitude of these seasonal fluctuations in mortality have decreased substantially during the 20th century in many countries, but the extent to which this decrease has contributed to the concurrent increase in life expectancy, is not known.

OBJECTIVE: To describe how the seasonality of all-cause mortality in Sweden has changed in the time period from 1860 to 1995, and how the change has contributed to the increase in longevity during the same period.

METHODS: Yearly birth cohorts of persons born in Sweden between 1800 and 1901, who reached, at least, 59 years of age were followed. A model where mortality rates increase exponentially with age and are modulated by a sinusoidal function of time of year were used to analyze the data.

RESULTS: The magnitude of seasonal variations of mortality rates has decreased substantially over the time period. For cohorts born in 1800, the risk of dying during the winter season was almost twice that of dying during summer. For cohorts born in 1900, the relative increase in winter mortality was 10%. The decrease in the magnitude of seasonal variability accounted for up to 45% of the increase in longevity also observed in the data.

CONTRIBUTION: By following a large number of extinct birth cohorts it was possible to show how the decrease in seasonal fluctuations in mortality has contributed to an increase in average life duration.

*anders.ledberg@su.se or anders.ledberg@gmail.com

1 Introduction

Mortality rates in the adult population depend on the seasons – in countries with temperate climate the rate of dying is typically higher during winter months (e.g., Tabellkommissionen, 1857; Rosenwaike, 1966; Healy, 2003; Davie et al., 2007; Rau, 2007; Fowler et al., 2015). This seasonal variation is present in mortality rates corresponding to most major causes of death, but the magnitude varies between different causes; for example, mortality from cardiovascular diseases shows larger seasonal fluctuations than mortality from cancers and injuries (e.g., Rosenwaike, 1966; Näyhä, 1980; Reichert et al., 2004; Parks et al., 2018; Rau, 2018).

The seasonal variability of mortality rates is likely caused by multiple, and interacting, factors, the most prominent are infectious diseases of the respiratory system and their consequences (e.g., Anderson and Le Riche, 1970; Reichert et al., 2004), and direct and indirect effects of cold temperatures (e.g., Rogot and Padgett, 1976; Kunst et al., 1993; Curriero et al., 2002; Anderson and Bell, 2009). The former cause might be harder to protect against (c.f. Simonsen et al., 2007; Osterholm et al., 2012), but major improvements have been made during the last one hundred and fifty years in the ability to safely protect against the impacts of weather.

The magnitude and phase of seasonal mortality variations has not been constant over time (Rau, 2007). Indeed, in many countries there has been a marked decrease in magnitude during the 20th century (Näyhä, 1980; Keatinge et al., 1989; Kunst et al., 1991; Seretakis et al., 1997; Lerchl, 1998; Rau, 2007). During the same time period, life expectancy has increased substantially in most countries, but the extent to which the reduction of the seasonal fluctuations has contributed to this increase is not known. The main aim of this paper is to investigate how the magnitude of yearly mortality fluctuations has changed over time in Sweden, and to estimate the impact these changes might have had on average life duration.

To realize this aim, the seasonality of all-cause mortality is studied by following cohorts consisting of all people born in Sweden, from 1800 to 1901, and who survived at least until age 59 (c:a 4.7 million people in total). By following a number of extinct birth cohorts it is possible to track how the magnitude of seasonal mortality variations has covaried with average life duration. The focus on older ages is warranted since this is when seasonality is most pronounced (e.g., Feinstein, 2002; Parks et al., 2018). A simple model, that can account for the major aspects of the seasonality in these data is developed first. The model is then used to show that the magnitude of seasonality has decreased substantially over the time period studied (1860-1995). Finally, the model is used to estimate how much the decrease in seasonal variability might have contributed to the increased mean length of life in these cohorts.

2 Materials and Methods

2.1 Data

Mortality data for persons who were born and died in Sweden were obtained from the “Swedish Book of Deaths” issued by the The Federation of Swedish

Genealogical Societies (Sveriges Släktforskarförbund, 2017). This is a database compiled from a range of official sources and contains information on times and places of births and deaths for persons that have died in Sweden since 1860. The coverage is almost complete. Since there is no information about causes of deaths in this database this study is based on all-cause mortality.

Birth cohorts were formed for all years between 1800 and 1901, for men and women separately. The focus in this work is on all-cause mortality for those who survived until the beginning of the year in which they would have turned 60 years old, i.e., they all survived at least until their 59th birthday. In total, there were almost 4.7 million persons who fulfilled these criteria. Supplementary table S1 lists the number of persons in each cohort.

2.2 Follow-up time

To investigate how mortality rates vary with the seasons, follow-up should be expressed in terms of calendar time. However, mortality rates also depend (strongly) on age, and it is therefore necessary to first express age (for each individual) in terms of calendar time.

Start of follow-up (i.e., time zero) was taken as the 1st of January the year cohort members would have turned 60 years old, and follow-up time was measured in days. Since all members are (by construction of the cohorts) alive at their 59th birthday, we can let the date of the 59th birthday be age zero. Let b_i denote the calendar day when cohort member i was born, expressed as the number of days since the beginning of the year. For example, for someone born the 13th of February, $b_i = 30 + 13 = 43$. The age of cohort member i , in days from age zero, can then be expressed as a function of calendar time: $a_i(t) = 365 - b_i + t$.

2.3 Model of mortality rates

Mortality rates for persons aged 60 years and above are often modeled as an exponential function of age (e.g., Gompertz, 1825; Olshansky and Carnes, 1997; Ledberg, 2020). To investigate how mortality rates depend on the seasons, this exponential model was extended by including a (1-year) periodic component. Thus, with follow-up time t expressed in days, mortality rate, $\lambda(t)$ say, is assumed to obey:

$$\lambda(t|b_i) = \mu e^{\beta(t+365-b_i)} e^{\alpha \cos\left(\frac{2\pi t}{365.25} + \theta\right)}, \quad (1)$$

where $\mu > 0$, $\beta > 0$, $\alpha \geq 0$, and θ are parameters that depend on sex and birth year. Note that according to this model the amplitude of the seasonal modulations (α) is proportional to the overall risk of death. This is a useful first approximation suitable for the current study, however, more complex models can easily be formulated within the framework outlined herein.

2.3.1 Parameter estimation

To estimate the parameters μ , β , α , and θ a two-step procedure was used. First, daily mortality rates were obtained by counting the number of deaths on each day and dividing by the number of persons alive at the beginning of the day. Second, these daily mortality rates were modeled as a function of age and calendar time using Poisson regression.

More formally, if d_t denotes the number of deaths on day t , and N_t the number of persons alive at the beginning of day t , we assume that d_t follows a Poisson distribution, the expected value of which satisfy

$$\log E(d_t) = \log N_t + \mu + \beta t + \alpha_1 \sin\left(\frac{2\pi t}{365.25}\right) + \alpha_2 \cos\left(\frac{2\pi t}{365.25}\right). \quad (2)$$

The amplitude α and phase θ in Eq. 1 is obtained from the following relations $\alpha = \sqrt{\alpha_1^2 + \alpha_2^2}$, and $\theta = \arctan(-\alpha_1/\alpha_2)$. The parameters of this model (Eq. 2) can be estimated by maximum likelihood using standard software, for example the `glm` function in R.

The model was fit to data for each birth cohort separately, starting from the year where cohort members would have turned 60, and ending by the year they would have turned 95. This upper-age restriction was imposed because estimates of daily mortality rates are highly variable when N_t becomes small, and consequently hard to fit with any model. This restriction implied that less than two percent of all deaths in the database were censored.

If all persons in a given birth cohort would have been born the last of December (so that age and calendar time become identical), the above two-step procedure would provide unbiased estimates of the model parameters. However, persons were of course not all born on the same day, and using Eq. 2 to estimate parameters of Eq. 1 might consequently introduce a small bias in the estimates. For t fixed, Eq. 2 represent the average mortality rate for those still alive at t , and those born early in the year will have a slight tendency of dying before those born later in the year (due to the age difference), possibly introducing a bias. The magnitude of this bias was investigated by comparing estimates obtained through the two-step procedure (Eq. 2) with estimates obtained by a direct maximization of the likelihood corresponding to Eq. 1 and were found to be negligible (see supporting figure S1). Parameter estimation based on Eq. 2 is preferred because it can be done using standard methods, and it can be easily extended to incorporate other time-varying factors.

2.4 Magnitude of seasonality

The magnitude of seasonality was quantified by the ratio of the highest to lowest mortality rate in the same year. This can be interpreted as a risk ratio, approximating how many times higher the risk is of dying in the winter compared to dying in the summer. Note that according to Eq. 1 this quantity is constant for each birth cohort and consequently, this single number can be used to track how the magnitude of seasonality changes over time. The ratio, h say, is obtained from Eq. 1 as

$$h = e^{2\alpha - 182.625\beta}. \quad (3)$$

Pointwise approximate confidence intervals for h were obtained by first sampling values of α_1, α_2 and β from a multivariate normal distribution with mean and covariance matrix given by the fit of Eq. 2. These sampled parameters were then transformed according to Eq. 3, and confidence intervals were estimated from the empirical distribution obtained. The normality assumption is warranted by the fact that maximum likelihood estimates are asymptotically normal, and that the degrees of freedom in fitting the models were moderately large.

2.5 Contribution to mean length of life

To estimate how much the seasonal variability contributes to the overall mortality it is helpful to put Eq.1 in the following form

$$\lambda(t|b_i) = \mu^* e^{\beta(t+365-b_i)} e^{\alpha(1+\cos(\frac{2\pi t}{365.25}+\theta))}, \quad (4)$$

where $\mu^* = \mu e^{-\alpha}$. In this formulation, the mortality rate without seasonal variation (i.e., $\alpha = 0$) is just a standard exponential increase with age.

Assuming that the model is valid also for ages > 95 years, mean life duration, conditional upon reaching 59 years of age, can be predicted for any magnitude of the seasonal component (α) by evaluating the following integral

$$e_{59} = \int_0^{\infty} t f(t) dt, \quad (5)$$

where $f(t)$ is the probability density of life times, and is given by

$$f(t) = \lambda(t) e^{-\int \lambda(x) dx}, \quad (6)$$

see for example Kalbfleisch and Prentice (2002). The integrals in Eq. 5 and Eq. 6 do not have closed form solutions and were therefore evaluated numerically.

2.6 Visualization

To visualize seasonality in Figures 1 and 2, the time series of daily mortality rates were smoothed by a running-line smoother of 60 days width (i.e., each point is replaced by the local mean of the 60 surrounding points).

2.7 Computations

All computations were made in R (R Core Team, 2016). Data and code needed to reproduce the figures is available upon request.

3 Results

3.1 Overview

Figure 1 shows mortality rates for 20 of the cohorts. Several points are noticeable: The periodicity of mortality rates is highly synchronized between men and women, and its magnitude decreases substantially between cohorts born 1811 and 1901; women have lower mortality rates than men, in particular during summer and early fall (the troughs); The mortality for both men and women decrease between cohorts born in the beginning of the period and those born in the end, and the decrease is more pronounced in the cohorts of women.

The annual peaks of mortality rates occur during winter (supporting Fig. S2) and for cohorts born before 1875 the peak occurred during the second week of February. The mortality peaks for cohorts born 1875-1901 occur somewhat later, extending into March in some cases (supporting Fig S2).

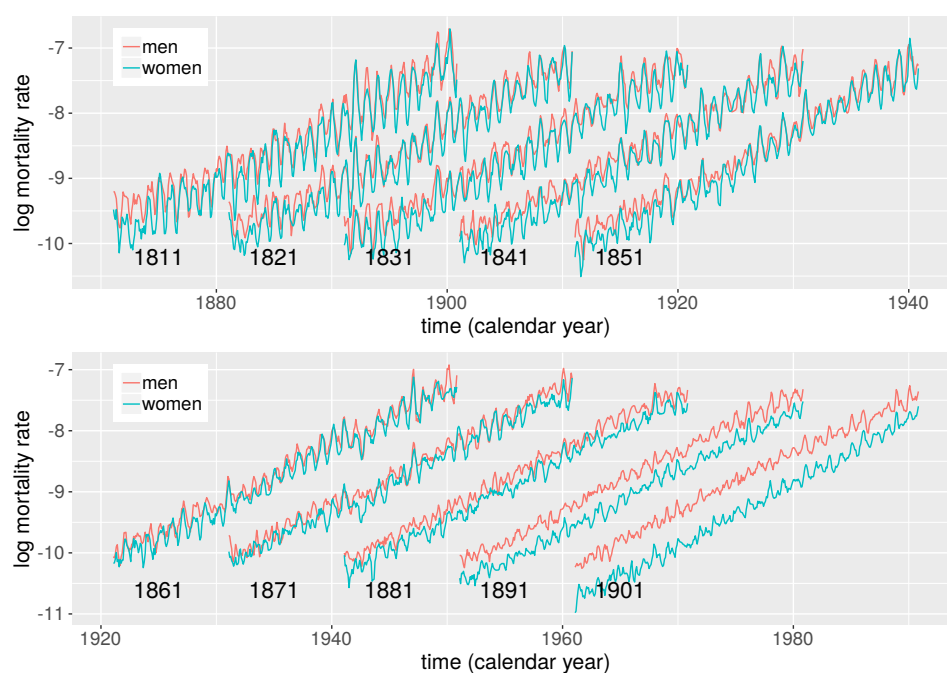


Figure 1: Mortality rates as a function of calendar time for ten birth cohorts of men and women who were born and died in Sweden. Numbers in plots show birth years. Mortality rates shown are local averages over two month (see methods).

3.2 A model of seasonality

Mortality rates were modeled by an exponentially increasing function of age modulated by a sinusoidal term with constant amplitude and phase (Eq. 1). Separate fits were made for each cohort. The coefficients of the sinusoidal terms were highly significant in all the 202 models evaluated (F-test, all p-values < 0.001), indicating that the model with seasonality better accounted for the data than did a model with just an exponential increase with age.

Figure 2 shows examples of mortality rates for three cohorts of women with model fits from Eq. 2 superimposed. Close inspection of the figure shows that sinusoids with constant amplitudes and phases, being proportional to the overall mortality (i.e., Eq. 2), provide good general description of the seasonality present in the data. However, some years have higher rates during winter than what is predicted from the model (e.g., 1931 in the middle panel, due to an influenza outbreak) or lower rates in the summer (e.g., 1875 in top panel). The phases of the seasonal fluctuations are almost constant from year to year, but in some cases the mortality increase comes earlier than predicted. For example, in 1919, in the middle panel, the peak in mortality is earlier than in the model; the Spanish flu hit Sweden in early October 1918 causing the peak to shift. Also, for ages above 90 years, mortality rates become more variable, and are in some cases less well fit by the model (e.g., the 1801 cohort).

Even if the model does not account for all aspects of the data it does provide a compact description of the main trends and provides a low-dimensional summary that will be used below to track changes over time.

3.3 Changes in seasonality over time

To illustrate how the magnitude of seasonal variability in mortality has changed over time, the mortality rate ratio (the ratio of the highest to lowest mortality rate in any particular year, Eq. 3) is plotted as a function of cohort birth year in Figure 3. According to the model (Eq. 1) this ratio is constant for a given birth cohort. The figure shows that the magnitude of seasonal variability has decreased substantially over the cohorts, both for men and women. For women born in the first decade of the 19th century, the mortality rate was about two times higher in the winter than in the summer. For women born 90 years later, the ratio had decreased to about 1.1. Also noticeable is that for cohorts born before 1880, the magnitude of seasonality was consistently higher among women than among men.

3.4 Contribution of seasonality to duration of life

To estimate how the decrease in seasonality might have influenced survival, the model (Eq. 4) was used to answer the following counterfactual question: “what would the mean life duration have been, if seasonal variations had always had the same magnitude as they had in the cohorts born in 1800?”. Figure 4 and Tables S2 and S3 show that the mean life duration (conditional upon reaching 59 years of age) increased substantially over the period: about 4.3 years for men and 6.8 years for women. The difference between the observed mean life duration and the life duration predicted from a model with high amplitude seasonal variability is substantial. For the cohorts born in 1901, the difference

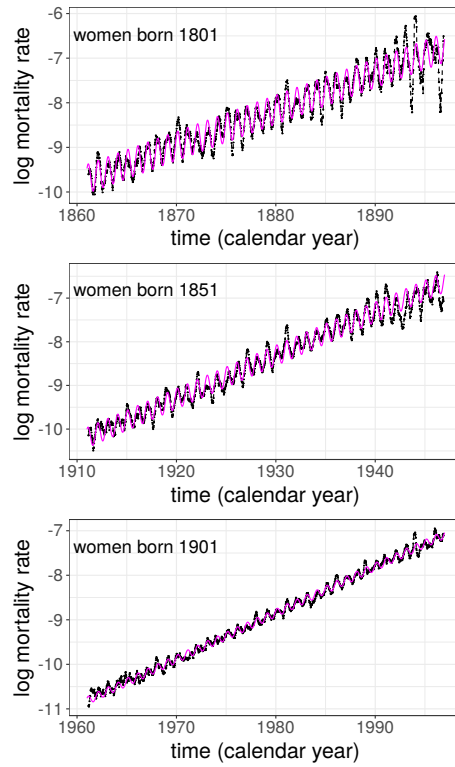


Figure 2: Mortality rates of three birth cohorts of women and predictions from the model (Eq.2) in magenta. Dates on the x-axis (calendar years) indicate the start of the given year.

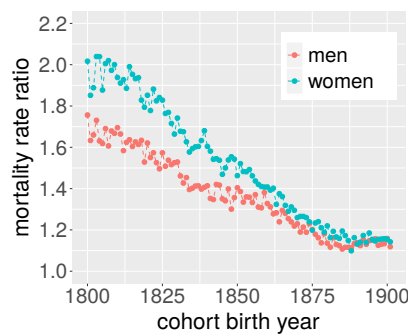


Figure 3: Mortality rate ratios for each cohort were estimated according to Eq. 2 and Eq. 3 and shows the ratio of the peak of the mortality rates to the trough of the mortality rate for any given year. Colored bands show 95% confidence intervals.

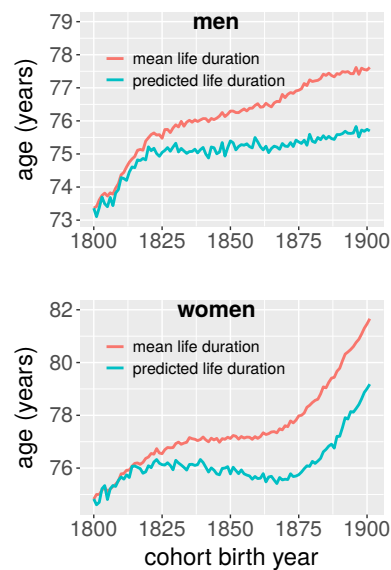


Figure 4: Mean life duration conditional upon reaching 59.5 years of age. Red curves show observed values, green curves show predicted values from a model where the seasonality has the same magnitude as that observed in the birth cohorts from 1800.

is 1.9 years for men and 2.5 for women. Consequently, in terms of the total increase in average life duration, the decrease in seasonality has contributed by about 35 percent for women and 45 percent for men.

4 Discussion

The magnitude of seasonal variations in all-cause mortality rates in Sweden was shown to have decreased substantially in the cohorts followed (Fig. 3). This is in line with previous results from other countries (Näyhä, 1980; Lerchl, 1998; Kunst et al., 1991; Seretakakis et al., 1997; Rau, 2007). Most of these previous studies have focused on secular trends during the second half of the 20th century. The data used here made it possible to show that the decrease in seasonality in Sweden started already with cohorts born during the first decades of the 19th century.

By focusing on cohort data it was possible to estimate how much this reduction in excess mortality due to the seasons had contributed to the increase in average life duration observed during the time period. The conditional average life duration increased by 4.3 years for men and 6.8 years for women, and up to 45 percent of this increase could be accounted for by the decrease in seasonality of death. Below some possible causes of this decrease in seasonality are considered and some technical aspects of the study are discussed.

4.1 What might have caused the decrease in seasonality

In terms of calendar time, the main part of the decrease happened between 1870 and 1970, a time-period during which Sweden, as many other countries, went through dramatic social and economical transformations (e.g., Schön, 2010). In 1870 Sweden was a relatively poor country where most people lived on the country side and where about 70% were working in agriculture and forestry. There was little or no public support for old and poor people. In 1970 Sweden had become one the richest countries in the world, the majority of the population lived in cities, less than 10% worked in agriculture, and Sweden had a highly developed welfare system (e.g., Lundberg and Åmark, 2010; Schön, 2010). It is likely that at least part of the decrease in seasonality was caused by the dramatic improvements in living conditions that were part of this transformation of social and economical circumstances (c.f., Kunst et al., 1991). However, more research is needed to quantify the extent to which improved living condition played a role.

Another possible explanation of the decrease in seasonality is if the major causes of death changed during the time period (c.f. Omran, 1971). Clearly, a change from causes of death more sensitive to the seasons (e.g., respiratory infections) to those less sensitive (e.g., cancers) could lead to a reduction in seasonality similarly to the one observed. However, it is not clear to what extent there has been such a transition in causes of death among older persons in Sweden. The system used to classify causes of death has changed multiple times over the time period, and according to official records, less than 10 percent of deaths among persons 60 years or older were attributable to infectious diseases already in 1911. More research is needed to determine to what extent the causes of death have changed over this time period among older persons in Sweden.

4.2 Cohort vs period effects

In this work, seasonal variations in mortality were assessed in a number of extinct birth cohorts. Most previous work on seasonality has been based on period data, and that might seem a more natural choice of data organization. However, given that the magnitude of seasonality was relatively constant within cohorts, the cohort-based analysis provided a very succinct description of the temporal trends (Fig. 3). A major advantage in using cohort data was that it made it possible to directly compare the magnitude of seasonality to the average life duration.

The model of mortality (Eq. 1) assumes a constant amplitude and phase of seasonal variability in a given birth cohort. This simple model captured the main trends in the data but it is clear that amplitude and phase of seasonality may also depend on calendar year. For example, in years with a more pronounced outbreak of influenza, both amplitude and phase are affected in multiple cohorts. A more comprehensive account of seasonality should include effects of calendar years as well. However, introducing fixed effects of calendar years in the model (Eq. 2) only had minor effects on the estimated decrease in seasonality (not shown). For some cohorts, a model where the amplitude of the seasonal effects was allowed to increase with time (i.e., an interaction) provided a better fit to the data. However, the interaction effects were never very strong, and it was judged that the model without interaction captured the magnitude of seasonality well

enough for the comparison across cohorts.

The magnitude of seasonal variations has been shown to increase with age in some previous studies (e.g., Näyhä, 1980; Feinstein, 2002; Parks et al., 2018), in the present study, however, the effects were shown to be relatively constant with age (e.g., Fig. 2), and instead to change between birth cohorts. Given that previous works are based on period data, these findings are in fact not contradictory. Indeed, the cohort-dependent effects reported here would show up as age-dependent effect in a period based analysis (as younger age groups belong to later-born cohorts).

4.3 Effect of decreasing seasonality

To estimate how much the decrease in seasonality contributed to the increase in average life duration, a comparison was made between the real average life duration, and the predicted average life duration based on a model in which the magnitude of seasonality was fixed at the level seen in the birth cohorts of 1800. According to the model predictions, 45% of the longevity increase in men and 35% of that in women could be attributed to the decrease in seasonality. To derive these numbers, two things were assumed. The first assumption is that the model of mortality rates (Eq. 1) also provides an adequate model of mean life duration. Supporting Fig. S3 shows that there is a very close correspondence between the data and the predictions from the model (through Eq. 5), demonstrating that the model indeed predicts average life duration with high accuracy. The second assumption is that the parameter controlling the amplitude of the seasonal component (α in Eq. 4) can be meaningfully changed without changing the other parameters in the model. This is more of a theoretical assumption, but it is supported by the data. For example, in supporting Fig. S4 the mortality rates of men born in 1821 are compared to rates of those born in 1881. This figure shows that the difference in mortality rates between these two birth years is primarily due to the higher rates during winter seasons in the cohort born 1821. The rates during summer seasons are similar in the two cohorts. In terms of conditional average life duration, those born in 1821 lived to be 75.6 whereas those born 1881 lived until 77.2 years. This difference is fully explained by the larger seasonal variability in the first cohort. This example shows an increase in longevity that was caused entirely by a quenching of the excess mortality in the winter, thus providing support for the second assumption.

Future work might explore in more detail the conditions that have enabled an increased life expectancy among old persons in Sweden. The results presented here suggests that a substantial part of this increase might be due to that living conditions in Sweden have become independent of the seasons. However, it is also clear from the results presented here that the bulk part of the increase in life expectancy must be attributed to factors that are relatively independent of the seasons.

Acknowledgments

This research was partly financed by a grant from SiS with number 2.6.1-1134-2017. I thank Ylva Almquist for helping me acquiring the Swedish mortality data, and Sveriges Släktforskarförbund for letting me use data from Dödboken.

References

- Anderson, B. G. and Bell, M. L. (2009). Weather-Related Mortality How Heat, Cold, and Heat Waves Affect Mortality in the United States. *Epidemiology*, 20(2):205–213.
- Anderson, T. W. and Le Riche, W. H. (1970). Cold Weather And Myocardial Infarction. *Lancet*, 1(7641):291–&.
- Curriero, F., Heiner, K., Samet, J., Zeger, S., Strug, L., and Patz, J. (2002). Temperature and mortality in 11 cities of the eastern United States. *American Journal of Epidemiology*, 155(1):80–87.
- Davie, G. S., Baker, M. G., Hales, S., and Carlin, J. B. (2007). Trends and determinants of excess winter mortality in New Zealand: 1980 to 2000. *BMC Public Health*, 7.
- Feinstein, C. A. (2002). Seasonality of Deaths in the U.S. by Age and Cause. *Demographic Research*, 6:469–486.
- Fowler, T., Southgate, R. J., Waite, T., Harrell, R., Kovats, S., Bone, A., Doyle, Y., and Murray, V. (2015). Excess winter deaths in Europe: a multi-country descriptive analysis. *European Journal Of Public Health*, 25(2):339–345.
- Gompertz, B. (1825). On the Nature of the Function Expressive of the Law of Human Mortality, and on a New Mode of Determining the Value of Life Contingencies. *Philos. Trans. Royal Soc*, 115:513–583.
- Healy, J. (2003). Excess winter mortality in Europe: a cross country analysis identifying key risk factors. *Journal Of Epidemiology And Community Health*, 57(10):784–789.
- Kalbfleisch, J. D. and Prentice, R. L. (2002). *The Statistical Analysis Failure Time Data*. John Wiley & Sons, Hoboken, NJ, second edition.
- Keatinge, W., Coleshaw, S., and Holmes, J. (1989). Changes In Seasonal Mortalities With Improvement In Home Heating In England And Wales From 1964 To 1984. *International Journal Of Biometeorology*, 33(2):71–76.
- Kunst, A., Looman, C., and Mackenbach, J. (1991). The Decline In Winter Excess Mortality In The Netherlands. *International Journal Of Epidemiology*, 20(4):971–977.
- Kunst, A., Looman, C., and Mackenbach, J. (1993). Outdoor Air-Temperature And Mortality In The Netherlands - A Time-Series Analysis. *American Journal Of Epidemiology*, 137(3):331–341.
- Ledberg, A. (2020). Exponential increase in mortality with age is a generic property of a simple model system of damage accumulation and death. arXiv:2002.08294.
- Lerchl, A. (1998). Changes in the seasonality of mortality in Germany from 1946 to 1995: the role of temperature. *International Journal of Biometeorology*, 42:84–88.

- Lundberg, U. and Åmark, K. (2010). Social Rights and Social Security: The Swedish Welfare State, 1900-2000. *Scandinavian Journal of History*, 26(3):157–176.
- Näyhä, S. (1980). Short and Medium-Term Variations in Mortality in Finland: A study on cyclic variations, annual and weekly periods and certain irregular changes in mortality in Finland during the period 1868-1972. *Scandinavian Journal of Social Medicine. Supplementum*, 21:1, 3–5, 7–101.
- Olshansky, S. and Carnes, B. (1997). Ever since Gompertz. *Demography*, 34(1):1–15.
- Omran, A. R. (1971). The Epidemiologic Transition: A Theory of the Epidemiology of Population Change. *The Milbank Memorial Fund Quarterly*, 49:509–538.
- Osterholm, M. T., Kelley, N. S., Sommer, A., and Belongia, E. A. (2012). Efficacy and effectiveness of influenza vaccines: a systematic review and meta-analysis. *Lancet Infectious Diseases*, 12(1):36–44.
- Parks, R. M., Bennett, J. E., Foreman, K. J., Toumi, R., and Ezzati, M. (2018). National and regional seasonal dynamics of all-cause and cause-specific mortality in the USA from 1980 to 2016. *eLife*, 7.
- R Core Team (2016). *R: A Language and Environment for Statistical Computing*. R Foundation for Statistical Computing, Vienna, Austria.
- Rau, R. (2007). *Seasonality in Human Mortality: A Demographic Approach*. Springer, Berlin.
- Rau, R. (2018). Seasonality of causes of death. In Rau, R., Bohk-Ewald, C., Muszyńska, M. M., and Vaupel, J. W., editors, *Visualizing Mortality Dynamics in the Lexis Diagram*. Springer International Publishing.
- Reichert, T., Simonsen, L., Sharma, A., Pardo, S., Fedson, D., and Miller, M. (2004). Influenza and the winter increase in mortality in the United States, 1959-1999. *American Journal Of Epidemiology*, 160(5):492–502.
- Rogot, E. and Padgett, S. (1976). Associations Of Coronary And Stroke Mortality With Temperature And Snowfall In Selected Areas Of United-States, 1962-1966. *American Journal Of Epidemiology*, 103(6):565–575.
- Rosenwaike, I. (1966). Seasonal Variation Of Deaths In United States 1951-1960. *Journal Of The American Statistical Association*, 61(315):706+.
- Schön, L. (2010). *Sweden's Road to Modernity: An Economic History*. SNS Förlag, Stockholm, Sweden.
- Seretakis, D., Lagiou, P., Lipworth, L., Signorello, L. B., Rothman, K. J., and Trichopoulos, D. (1997). Changing seasonality of mortality from coronary heart disease. *JAMA-Journal Of The American Medical Association*, 278(12):1012–1014.

- Simonsen, L., Taylor, R. J., Viboud, C., Miller, M. A., and Jackson, L. A. (2007). Mortality benefits of influenza vaccination in elderly people: an ongoing controversy. *Lancet Infectious Diseases*, 7(10):658–666.
- Sveriges Släktforskarförbund (2017). *Sveriges dödbok 1860–2017*. Sveriges Släktforskarförbund, Stockholm.
- Tabellkommissionen (1857). *Bidrag till Sveriges officiella statistik. A. Befolkningsstatistik*. P. A. Norstedt & Söner, Stockholm, Sweden.