

Antibody responses to a suite of novel serological markers for malaria surveillance demonstrate strong correlation with clinical and parasitological infection across seasons and transmission settings in The Gambia

Author details

Lindsey Wu^{1*}, Julia Mwesigwa², Muna Affara³, Mamadou Bah², Simon Correa², Tom Hall⁴, James Beeson⁵, Kevin K.A. Tetteh¹, Immo Kleinschmidt^{6,7}, Umberto D'Alessandro², Chris Drakeley¹

***Corresponding author:** lindsey.wu@lshtm.ac.uk

1. London School of Hygiene and Tropical Medicine (LSHTM), Faculty of Infectious Tropical Diseases, Department of Infection Biology. London WC1E 7HT, UK.
2. Medical Research Council Unit The Gambia at London School of Hygiene and Tropical Medicine. Fajara, The Gambia.
3. Bernhard Nocht Institute for Tropical Medicine (BNITM). Arusha, Tanzania.
4. St. George's University of London (SGUL). London, United Kingdom.
5. Burnet Institute. Melbourne, Australia.
6. London School of Hygiene and Tropical Medicine (LSHTM), Faculty of Epidemiology and Population Health, Department of Infectious Disease Epidemiology. London WC1E 7HT, UK.
7. School of Pathology, Wits Institute for Malaria Research, Faculty of Health Science, University of Witwatersrand, South Africa.

Email addresses:

LW: lindsey.wu@lshtm.ac.uk

JM: julia.mwesigwa@lshtm.ac.uk

MA: affara@bnitm.de

NOTE: This preprint reports new research that has not been certified by peer review and should not be used to guide clinical practice.

25 MB: mmbah@mrc.gm

26 SC: scorea@mrc.gm

27 TH: thall@sgul.ac.uk

28 JB: beeson@burnet.edu.au

29 KKAT: kevin.tetteh@lshtm.ac.uk

30 IK: immo.kleinschmidt@lshtm.ac.uk

31 UD: umberto.dalessandro@lshtm.ac.uk

32 CD: chris.drakeley@lshtm.ac.uk

33

34 Keywords: malaria, serology, surveillance

35

36 Abstract

37 Background

38 As malaria transmission declines, sensitive diagnostics are needed to evaluate interventions and
39 monitor transmission. Serological assays measuring malaria antibody responses offer a cost-effective
40 detection method to supplement existing surveillance tools.

41 Methods

42 A prospective cohort study was conducted from 2013 to 2015 in 12 villages across five administrative
43 regions in The Gambia. Serological analysis included samples from the West Coast Region at the start
44 and end of the season (July and December 2013) and from the Upper River Region in July and
45 December 2013, and April and December 2014. Antigen-specific antibody responses to seven
46 *Plasmodium falciparum* (*P.falciparum*) antigens – Etramp5.Ag1, GEXP18, HSP40.Ag1, Rh2.2030,
47 EBA175 RIII-V, PfMSP1₁₉, PfAMA1 - were quantified using a multiplexed bead-based assay. The
48 association between antibody responses and clinical and parasitological endpoints was estimated at
49 the individual, household, and population level.

Results

Strong associations were observed between clinical malaria and concurrent sero-positivity to Etramp5.Ag1 (aOR 4.56 95%CI 2.94 – 7.06), *PfMSP1₁₉* (aOR 3.84 95%CI 2.41 – 6.04) and *PfAMA1* (aOR 2.18 95%CI 1.23 – 3.84), while asymptomatic infection was associated with sero-positivity to all antigens. Village-level sero-prevalence amongst children 2-10 years against Etramp5.Ag1, HSP40.Ag1, and *PfMSP1₁₉* showed the highest correlations with clinical and *P.falciparum* infection incidence rates. For all antigens, there was increased odds of asymptomatic *P.falciparum* infection in subjects residing in a compound with greater than 50% sero-prevalence, with a 2- to 3-fold increase in odds of infection associated with Etramp5.Ag1, GEXP18, Rh2.2030, *PfMSP1₁₉* and *PfAMA1*. For individuals residing in sero-positive compounds, the odds of clinical malaria were reduced, suggesting a protective effect.

Conclusions

At low transmission, long-lived antibody responses could indicate foci of malaria transmission that have been ongoing for several seasons or years. In settings where sub-patent infections are prevalent and fluctuate below the detection limit of polymerase chain reaction (PCR), the presence of short-lived antibodies may indicate recent infectivity, particularly in the dry season when clinical cases are rare. Serological responses may reflect a persistent reservoir of infection, warranting community-targeted interventions if individuals are not clinically apparent but have the potential to transmit. Therefore, serological surveillance at both the individual and household level may be used to target interventions where there are foci of asymptomatically infected individuals.

Background

As malaria transmission declines, the prevalence of infection becomes increasingly heterogeneous and focal. In low transmission settings, highly sensitive diagnostics are needed to measure subtle changes in malaria incidence, evaluate the effectiveness of community-based interventions, and monitor potential re-introduction after elimination. Evidence suggests that infections below the detection limit of microscopy and rapid diagnostic tests (RDTs) contribute to on-going transmission, but the magnitude of their public health importance is yet to be determined.¹⁻³ Nucleic acid amplification tests (NAATs), such as ultrasensitive quantitative polymerase chain reaction (qPCR), can detect less than 1 parasite per microlitre^{4,5}, but are still sensitive to fluctuations in parasite density during the course of an infection.

Serological assays measuring antibody responses may be a more stable diagnostic alternative, offering a cost-effective detection method to supplement existing surveillance tools. A number of studies in The Gambia have observed spatiotemporal variations in antibody responses to malaria over time^{6,7}, with similar observations in Tanzania⁸, Equatorial Guinea⁹, and South Africa¹⁰. Newly developed serological markers of recent exposure to malaria may now be capable of measuring short-term changes in malaria transmission over periods as short as 1-2 years. However, these markers require validation with population-representative data from a range of endemic settings^{11,12}. Longitudinal cohort studies provide a unique opportunity for a multi-metric assessment of transmission dynamics using clinical, parasitological, and serological endpoints. The aim is to understand the relative accuracy of different diagnostics and their utility in epidemiological surveillance.

Using a suite of novel serological markers of malaria exposure, this study determines the correlation of antibody responses with clinical and parasitological endpoints at the individual, household, and population level in four villages in rural Gambia over two years, estimating the strength of association between serological markers and gold standard metrics of malaria infection. These findings will support the utility of serology in measuring recent malaria transmission and allow selection of markers

most suitable for use in future surveillance, particularly for reactive detection strategies in elimination settings.

Methods

Data and sampling

A prospective cohort study was conducted from 2013 to 2015 in 12 villages across five administrative regions - West Coast (WCR), North Bank (NBR), Lower River (LRR), Central River (CRR) and Upper River (URR) Regions. *Plasmodium falciparum* (Pf) prevalence measured by polymerase chain reaction (PCR) ranged from 2.27 to 19.60% in the Central River and Upper River Regions respectively (Figure 1). As described by Mwesigwa et al,¹³ the study aim was to understand the dynamics of malaria infection and the impact of annual mass drug administration (MDA). Residents more than six months of age were enrolled in the study, and monthly surveys were conducted during malaria transmission season from June to December each year, as well as surveys in the dry season in April 2014, and prior to the implementation of MDA in May and June 2014 and 2015.

Individual finger prick blood samples were collected for haemoglobin estimation and on filter paper (Whatman 3 Corporation, Florham Park, NJ, USA) for molecular and serological analysis. Clinical malaria cases were identified by passive case detection (PCD) at health facilities or in villages by study nurses in individuals with history of fever in the previous 24 hours or axillary temperature $\geq 37.5^{\circ}\text{C}$ and a positive Rapid Diagnostic Test (RDT) result (Paracheck Pf, Orchid Biomedical System, India).

Serological analysis included all available samples from the West Coast Region in Besse and N'Demban villages from surveys conducted at the start of the transmission season in July 2013 (N=537) and at the end of the season in December 2013 (N=526). In the Upper River Region, analysis included all samples collected in Njaiyal and Madino Samako in July 2013 (N=779), December 2013 (N=632), April (dry season) 2014 (N=823), and December 2014 (N=757) (Figure 1, Table 1). These regions represent extremes of two transmission intensities, with months selected at the start and end of the

transmission season. Samples from clinical PCD cases were linked by study participant identification code to samples from the same individuals collected during routine monthly surveys.

This study was approved by the Gambia Government/MRC Joint Ethics Committee (SCC1318). Verbal consent was first obtained at village sensitisation meetings, followed by individual written informed consent for all participants. Parents/guardians provided written consent for children less than 17 years, and assent was obtained from children between 12 and 17 years.

Laboratory procedures

Antigen-specific antibody responses were quantified using the Luminex MAGPIX protocol described in Wu et al 2019.¹⁴ Plasma was eluted from 6mm dried blood spots (DBS) (4 µl whole blood equivalent) and shaken overnight at room temperature in 200 µl of protein elution buffer containing phosphate buffered saline (PBS) (pH 7.2), 0.05% sodium azide and 0.05% Tween-20, yielding an initial 1:50 sample dilution. One day prior to assay processing, samples were diluted to a final 1:500 dilution using 10 µl of the 1:50 pre-dilution sample and 90 µl of blocking Buffer B to prevent non-specific binding (1xPBS, 0.05% Tween, 0.5% bovine serum albumin (BSA), 0.02% sodium azide, 0.1% casein, 0.5% polyvinyl alcohol (PVA), 0.5% polyvinyl pyrrolidone (PVP) and 1,500 µg/ml *E.coli* extract). Negative and positive controls were also incubated one day prior in Buffer B, with negative controls prepared at a 1:500 dilution and Gambian pooled positive controls in a 6-point 5-fold serial dilution (1:10-1:31,250). The positive control was based on a pool of 22 serum samples from malaria hyper-immune individuals in The Gambia, and ten individual plasma samples from European malaria-naïve adults were used as negative controls.

Samples were prepared for diagnostic PCR as described by Mwesigwa et al 2017.¹³ Briefly, DNA was extracted from three 6-mm DBS using the automated QIAxtractor robot (Qiagen). Negative and positive (3D7) controls were included to control for cross contamination and DNA extraction efficiency, respectively. The DBS were lysed by incubation in tissue digest buffer at 60 °C for 1 hour and digested eluates were applied onto capture plates, washed, and the DNA eluted into 80 µl. The

extracted DNA (4 µl) was used in a nested PCR, amplifying the multi-copy *Plasmodium* ribosomal RNA gene sequences using genus and species specific primers.¹⁵ All PCR products were run using the QIAxcel capillary electrophoresis system (Qiagen), using the screening cartridge and 15-1,000 bp-alignment marker. Results were exported and double scored using both the QIAxcel binary scoring function and manually by visualization of the gel images and discrepancies were scored by a third independent reader. All readers were blinded to participant survey data.

Statistical analyses

Data analysis was based on total immunoglobulin (IgG) levels to five antigens as potential markers of sero-incidence¹⁶ - early transcribed membrane protein 5 (Etramp5.Ag1), gametocyte export protein 18 (GEXP18), heat shock protein 40 (HSP40.Ag1), erythrocyte binding antigen 175 RIII-V (EBA175), reticulocyte binding protein homologue 2 (Rh2.2030). Two antigens associated with long-lived antibody response – *P.falciparum* merozoite surface antigen 1 19-kDa carboxy-terminal region (*PfMSP1₁₉*) and *P.falciparum* apical membrane antigen 1 (*PfAMA1*) – were included as a comparison, both historically used to assess sero-conversion rates over time^{8,9} and previously studied in The Gambia^{6,7}. For antigens associated with long-lived antibodies (*PfMSP1₁₉*, *PfAMA1*), a two-component Gaussian mixture model was used to define distributions of negative and positive antibody levels, expressed in units of median fluorescence intensity (MFI). Sero-positivity thresholds were defined as the mean log MFI values plus two standard deviations of the negative distribution.¹⁷ Mixture models were estimated using the ‘*normalmixEM*’ function in the ‘*mixtools*’ package v1.0.4 in R version 3.6.1. For antigens associated with shorter-lived antibodies where statistical evidence of a bimodal distribution of antibody responses in the population was not strong - Etramp5.Ag1, GEXP18, HSP40.Ag1, EBA175, Rh2.2030 - the sero-positivity threshold was defined by the mean log MFI plus three standard deviations of 71 malaria-naïve European blood donors used as negative controls.

Individual-level association between antibody response and the concurrent odds of clinical malaria (passively detected via the health facility or study nurses in the community) or asymptomatic

P.falciparum infection (actively detected using PCR from monthly survey samples) were assessed using generalised estimating equations (GEE). Analysis was adjusted for age group (1-5 years, 6-15 years, and greater than 15 years) and use of long-lasting insecticide treated nets (LLINs) in the last 24 hours and allowed for clustering at the compound level, where compound is a collection of households centrally located around a main residence. The magnitude of the association between antibody response and odds of infection was evaluated for interaction with age group.

Using a GEE model, individual-level odds of clinical malaria or asymptomatic infection was assessed for association with residence in the same compound as a sero-positive individual. Similarly, the association between individual odds of infection and compound-level sero-prevalence (<50% or >50%), was assessed using a mixed-effects generalised linear model adjusted for age group and LLIN use, with random-effects at the compound-level. To ensure that estimates are not biased by the sero-prevalence of small compounds, analysis was weighted by the number of individuals in the compound (whose sero-status was assessed) and only included compounds with at least four individuals. Models were fit using the 'geeM' and 'lme4' packages in R version 3.14.

Village-level sero-prevalence in July and December 2013 amongst children aged 2-10 years was compared against all-age clinical and *P.falciparum* infection incidence rates from the same months, the latter of which were previously reported by Mwesigwa et al¹³. Monthly clinical and *P.falciparum* infection incidence rates were defined respectively as the number of new clinical cases or *P.falciparum* infections (PCR-positive individuals who were PCR-negative in the previous monthly survey) divided by total person-years at risk. This age range was selected to align with other routine surveillance metrics such as annual parasite index (API) commonly using this age group as a sentinel population. The strength of the relationship between village-level incidence rates and sero-prevalence for each antigen was assessed using Pearson's correlation coefficient.

Results

Village-level seroprevalence

Data from 2,005 individuals were available for analysis of antibody responses from 5,581 samples between June 2013 and December 2014 (Tables 1 and 2). The majority of subjects were female in both the West Coast (55.0%) and the Upper River (54.3%) Regions, and higher LLIN use in the West Coast (96.6%) compared to the Upper River Region (46.6%). In the West Coast Region, incidence of *P. falciparum* was three times higher in December than at the start of the transmission season, and five times higher in December in the Upper River Region (Table 3). Sero-prevalence amongst 2-10 years olds in the West Coast Region ranged from 1.4% (95%CI 0.0 - 3.1) for Rh2.2030 in July 2013 (start of the transmission season) and 13.7% (95%CI 8.9-18.5) for Etramp5.Ag1 in December 2013 (end of transmission season). In the Upper River Region, sero-prevalence across all antigens was higher, ranging from 5.1% (95%CI 2.5-7.7) for *PfMSP1₁₉* in July to 36.1% (95%CI 30.0-42.2) for GEXP18 in December (Table 3). Sero-prevalence in this age group was highly correlated with both clinical malaria and *P.falciparum* infection incidence rates (Figure 2, Table 4).

In both regions in July and December 2013, correlations between *P.falciparum* infection rate and sero-prevalence were strongest for Etramp5.Ag1 ($p=0.98$), HSP40.Ag1 ($p=0.99$), and *PfMSP1₁₉* ($p=0.99$). Incidence of clinical malaria had the strongest correlations with Etramp5.Ag1 ($p=0.98$), HSP40.Ag1 ($p=0.95$), and *PfMSP1₁₉* ($p=0.97$). Correlations with both clinical incidence and *P.falciparum* infection rates remained high for Etramp5.Ag1 ($p=0.98$ and $p=0.96$, respectively) and *PfMSP1₁₉* ($p=0.96$ and $p=0.98$, respectively), but slightly lower for HSP40.Ag1 ($p=0.85$ and $p=0.81$, for clinical incidence and *P.falciparum* infection rates respectively), after excluding data from December 2013 from the Upper River Region as a potential outlier. These correlations are based on few datapoints, with three observations when excluding URR December 2013.

Individual-level association between clinical malaria, asymptomatic *P.falciparum* infection and concurrent sero-positivity

The odds of clinical malaria were higher in individuals sero-positive to five (out of seven) of the antigens analysed (Etramp5.Ag1, GEXP18, Rh2.2030, *PfMSP1₁₉* and *PfAMA1*) (Figure 3A, Table 5). After

adjusting for age and LLIN use, clinical malaria was associated with concurrent sero-positivity to three antigens (Etramp5.Ag1, *PfMSP1₁₉* and *PfAMA1*), while odds of asymptomatic infection were strongly associated with sero-positivity to all antigens. Amongst individuals sero-positive for Etramp5.Ag1, there was increased odds of both clinical malaria (aOR 4.56, 95%CI 2.94 – 7.06, $p < 0.001$) and asymptomatic infection (aOR 3.36, 95%CI 2.75 – 4.11, $p < 0.001$) (Table 5). Association with clinical malaria was slightly lower in individuals sero-positive for *PfMSP1₁₉* (aOR 3.82, 95%CI 2.41 - 6.04, $p < 0.001$) and *PfAMA1* (aOR 2.18, 95%CI 1.23 - 3.84, $p = 0.007$). Odds of asymptomatic infection in individuals sero-positive to GEXP18 (aOR 3.10, 95%CI 2.50 – 3.85, $p < 0.001$), Rh2.2030 (aOR 3.10, 95%CI 2.44 - 3.94, $p < 0.001$) and *PfAMA1* (aOR 3.83, 95%CI 2.95 - 4.98, $p < 0.001$) was similar to Etramp5.Ag1.

Individual-level odds of clinical malaria, asymptomatic infection when residing in compounds with sero-positive individuals

The odds of clinical malaria were reduced for individuals residing in the same compound with an individual sero-positive to any of the seven antigens (Figure 3B, Table 6), from an 83% reduction if residing in the same compound as an individual sero-positive for Etramp5.Ag1 (aOR 0.17, 95%CI 0.03-0.84, $p = 0.03$) to a 95% reduction if residing in the same compound as someone sero-positive for *PfAMA1* (aOR 0.05, 95%CI 0.01 - 0.47, $p = 0.009$). Conversely, the odds of asymptomatic infection were positively associated with residing in the same compound as sero-positive individuals for five antigens (Etramp5.Ag1, GEXP18, Rh2.2030, *PfMSP1₁₉*, and *PfAMA1*). Adjusted odds of asymptomatic infection was nearly 3-fold higher if residing with an individual sero-positive for Etramp5.Ag1 (aOR 2.95, 95%CI 1.66 - 5.24, $p < 0.001$) and for GEXP18 (aOR 2.71, 95%CI 1.58 - 4.63, $p < 0.001$). If residing in a compound with individuals sero-positive to Rh2.2030, *PfMSP1₁₉* or *PfAMA1*, the odds of asymptomatic infection were all nearly twice as high as individuals living in compounds sero-negative to these antigens (Table 6).

Association between individual-level clinical malaria, asymptomatic infection, and compound sero-prevalence

When stratifying by compound-level sero-prevalence, mean regression estimates found a reduced odds of clinical malaria if residing in compound with sero-prevalence less than 50% for all antigens, and an increased odds of clinical malaria in compounds with greater than 50% sero-prevalence for four antigens (Etramp5.Ag1, GEXP18, HSP40.Ag1, and *PfMSP1₁₉*) (Figure 4A, Supplementary File 2 - Tables S3, S7, S11, S19, and S23). However, these results were not statistically significant. There was strong statistical evidence for increasing odds of asymptomatic infection with increasing compound sero-prevalence for two antigens (Etramp5.Ag1 and *PfMSP1₁₉*) (Figure 4B, Supplementary File 2 - Tables S4, S24), and weaker statistical evidence for increasing odds of asymptomatic infection for HSP40.Ag1 and Rh2.2030 (Supplementary File 2 - Tables S14, S16).

Antigens most associated with increased odds of asymptomatic infection were Etramp5.Ag1, GEXP18 and *PfMSP1₁₉*. For Etramp5.Ag1, aOR 2.61 (95%CI 1.53 - 4.45, $p < 0.001$) in compounds with less than 50% sero-prevalence to an aOR 8.32 (95%CI 5.32 - 13.03, $p < 0.001$) in compound sero-prevalence greater than 50%, compared to sero-negative compounds (Supplementary File 2 - Table S4). For GEXP18, aOR ranged from 2.97 (95%CI 1.47 - 5.99, $p = 0.002$) to 8.80 (95%CI 3.50 - 22.12, $p < 0.001$) (Supplementary File 3 - Table S8). For *PfMSP1₁₉*, aOR ranged from 2.18 (95%CI 1.33 - 3.60, $p = 0.002$) to aOR 9.06 (95%CI 5.16 - 15.89, $p < 0.001$) (Supplementary File 2 - Table S24). For HSP40.Ag1, EBA175, and *PfAMA1*, statistically strong evidence for increased odds of asymptomatic infection was only observed in compounds with greater than 50% sero-prevalence (Supplementary File 2 - Tables S12, S20, S28).

The spatial distribution of infections at both the start and end of the transmission season (June – July 2013 vs August-December 2013) suggest that clinical and asymptomatic malaria are localised near households with Etramp5.Ag1 sero-positive individuals (Figure 5). There are a number of Etramp5.Ag1 sero-positive households at both the start and during the wet season without concurrent clinical or

asymptomatic infections present. However, this is more pronounced for *Pf*AMA1, where sero-positivity could reflect a longer history of exposure than Etramp5.Ag1 (Supplementary File 3 - Figure S2). While there are a limited number of clinical cases between June and July 2013, from August to December 2013, these cases occur in proximity to households with asymptomatic and Etramp5.Ag1 sero-positive individuals.

Discussion

We investigated the association between antibody responses and clinical and parasitological endpoints at the individual, compound, and population level in The Gambia. At the individual level, clinical malaria was highly correlated with concurrent sero-positivity to Etramp5.Ag1, *Pf*MSP1₁₉ and *Pf*AMA1, while asymptomatic infection was correlated with sero-positivity to all antigens included in this study. The strongest associations were with sero-positivity to Etramp5.Ag1 and *Pf*AMA1. Village-level sero-prevalence amongst children 2-10 years against antigens Etramp5.Ag1, HSP40.Ag1, and *Pf*MSP1₁₉ showed the highest correlations with clinical incidence and *Pf* infection rates.

At the compound level, individuals had increased odds of asymptomatic infection when residing in a compound with greater than 50% sero-prevalence to all antigens, with the highest odds associated with sero-prevalence to Etramp5.Ag1, GEXP18, and *Pf*MSP1₁₉. These results do not imply a causal relationship between serological responses and clinical outcomes or asymptomatic infection, but highlight that infected individuals tend to be concurrently sero-positive to most of the serological markers assessed. There was strong evidence of reduced odds of clinical malaria for individuals residing in the same compound as an individual sero-positive to any of the antigens, suggesting a protective effect.

While *Pf*MSP1₁₉ and *Pf*AMA1 have been used extensively to measure medium and long-term trends in transmission intensity, these markers may be less sensitive to changes in transmission at higher endemicities or to smaller short-term fluctuations due to the rapid acquisition of antibodies and the long half-life of sero-positivity for many blood-stage antigens.^{18–21} Individuals with clinical malaria or

with long-lived antibody responses in low transmission regions of western Gambia could indicate foci of malaria transmission that have been ongoing for several transmission seasons or years. In areas where parasite density is low and often missed by RDTs and microscopy, using serological markers could support targeted interventions to clear or eliminate these residual reservoirs of human infection. Antigens in this study associated with shorter-lived sero-positivity (Etramp5.Ag1, GEXP18, and HSP40.Ag1) were positively correlated with either clinical malaria and asymptomatic infection, and sometimes both. These antigens have been relatively recently identified and shown to decrease rapidly after infection in Ugandan children.¹⁶ In settings where most infections are sub-patent and fluctuate above or below the detection limit of PCR, detecting the short-lived antibody response in individuals or households could imply recent infectivity, particularly in the dry season where clinical cases are rare.

While factors such as the method for determining sero-positivity cut-off values could affect estimates of sero-prevalence or the magnitude of association between endpoints,²² the observations in this study have important implications. In particular, there is a very consistent trend of compound sero-positivity being a risk factor for asymptomatic infection in contrast to being protective against clinical malaria. The complex dynamics between clinical and parasitic immunity are not explained through epidemiological data alone as previous studies have observed lower PCR density in areas of higher transmission intensity³¹. Fluctuations in sero-positivity levels may be a strong indicator of a persistent human reservoir of infection, warranting community-targeted interventions if individuals remain infected but are not clinically apparent and continue to transmit. Household serological status could be used for targeting interventions where there are foci of asymptomatically infected individuals.

Immuno-epidemiological studies will be subject to variations in antigen-specific antibody dynamics, as well as the immunogenicity of recombinant antigen constructs. Differences in sequence selection and expression systems may result in recombinant proteins that differ slightly from natural epitope morphology. It is unclear the degree to which these subtle variations affect the strength of antibody detection between recombinant antigens. While this study focuses primarily on total IgG responses,

quantification of antibody levels using a combination of isotypes or subclasses may allow for improved detection of sero-incidence. For example, IgG3 antibodies are thought to be thought to bind more weakly than IgG1 and IgG3.²³ Current evidence on the associations of antigen-specific IgG subclasses with both exposure and immunity to malaria is varied^{24,25}. Antigens will fall along a continuum of suitability as either biomarkers of acute infection to correlates of protective immunity²⁶, and these subtleties need to be considered when selecting targets for surveillance. The assays used in this study have allowed us to quantify antibody responses to specific antigens. Therefore, it will also be valuable to investigate the optimal combinations of antigens associated with both short-lived and long-lived antibody responses in surveillance, which could be more routinely used to account for the breadth of antibody response between individuals in a population.²⁷⁻²⁹ Variations such as this could also potentially be overcome by the use of multiple variants or chimeric antigen constructs.³⁰

Changing household sero-prevalence throughout the season may influence the precision of estimates, which could be overcome with more frequent sampling of serological data, such as three-month intervals depending on the decay rate of antigen-specific antibodies. Given that household sero-prevalence may be a robust proxy for past malaria exposure and is simultaneously associated with increased risk of asymptomatic infections and but reduced risk of clinical malaria (potentially due to partial immunity), the biological relationship between household serological status and the risk of clinical or parasitic infection could be further investigated through controlled observational cohort studies.

These findings indicate that a number of new serological markers of malaria exposure could be useful for epidemiological surveillance in highly seasonal malaria transmission areas. There is potential for several of the antigenic targets explored to be used for population-wide screening, all of which have also been optimised for use on a multiplexed bead-based platform in research settings. Further translating this to a lateral flow device may offer opportunities for more widespread application if use-cases can be well established.³² In light of the strong association between serological status and increased asymptomatic infection, serological platforms may have direct utility as a screening tool in

active or reactive case detection strategies, most of which have relied on clinical index cases presenting at health facilities and have shown variability in effectiveness.³³ Future work can also aim to develop standardised methods for characterising serological responses at the village or cluster level or as part of randomised trials, while optimal sampling timeframes and sentinel populations can be designed for use in routine surveillance.

Conclusions

As more countries move towards malaria elimination, including several in sub-Saharan Africa, sensitive diagnostics will be needed to further understand the dynamics between the parasite, host, and vector at very low levels of transmission. Integrating newly developed serology markers of recent exposure into existing field diagnostics will become more important in estimating the human reservoir and inform targeting of elimination approaches at very low levels of transmission.

List of abbreviations

aOR: Adjusted odds ratio
 CI: Confidence interval
 DBS: Dried blood spot
 EBA175: Erythrocyte binding antigen 175
 Etramp5.Ag1: Early transcribed membrane protein 5
 GEE: Generalised estimating equations
 GEXP18: Gametocyte export protein 18 (GEXP18)
 HSP40.Ag1: Heat shock protein 40
 IgG: Immunoglobulin
 LLIN: Long-lasting insecticide treated net
 MDA: Mass drug administration (MDA)
 MFI: Median fluorescence intensity
 PCD: Passive case detection
 PCR: Polymerase chain reaction
Pf, *P.falciparum*: *Plasmodium falciparum*
*Pf*AMA1: *P.falciparum* apical membrane antigen 1

373 *PfMSP1₁₉*: *P.falciparum* merozoite surface antigen 1 19-kDa carboxy-terminal region

374 RDT: Rapid diagnostic test

375 Rh2.2030: Reticulocyte binding protein homologue 2

376 URR: Upper River Region, The Gambia

377 WCR: West Coast Region, The Gambia

378

379 **Declaration of interests**

380 **Ethics approval and consent to participate**

381 This study was approved by the Gambia Government/MRC Joint Ethics Committee (SCC1318). Verbal
382 consent was first obtained at village sensitisation meetings, followed by individual written informed
383 consent for all participants. Parents/guardians provided written consent for children less than
384 17 years, and assent was obtained from children between 12 and 17 years.

385 **Availability of data and materials**

386 The datasets used and/or analysed during the current study are available from the corresponding
387 author on reasonable request.

388 **Competing interests**

389 All authors declare no competing interests.

390 **Funding**

391 This study was funded by the UK Medical Research Council (UKMRC) through the LSHTM Doctoral
392 Training Programme studentship received by LW. The funders had no role in the design of the study,
393 collection, analysis, interpretation of data or writing of the manuscript.

394 **Author contributions**

395 LW designed and coordinated the study, supervised and performed serological lab work, analysed the
396 data, and wrote the manuscript. JM and MA supervised field data collection and laboratory work. SC

and MB conducted the serological assays. KKAT and JB produced the antigens. KKAT and TH developed the serological assay. JM, MA, UD, IK, and CD advised on study design, interpretation of findings, and reviewed the manuscript. All authors read and approved the final manuscript.

References

1. Okell, L. C. *et al.* Factors determining the occurrence of submicroscopic malaria infections and their relevance for control. *Nat. Commun.* **3**, 1237 (2012).
2. Bousema, T., Okell, L., Felger, I. & Drakeley, C. Asymptomatic malaria infections: detectability, transmissibility and public health relevance. *Nat. Rev. Microbiol.* **12**, 833–40 (2014).
3. Wu, L. *et al.* Comparison of diagnostics for the detection of asymptomatic *Plasmodium falciparum* infections to inform control and elimination strategies. *Nature* **528**, S86–93 (2015).
4. Andrews, L. *et al.* Quantitative real-time polymerase chain reaction for malaria diagnosis and its use in malaria vaccine clinical trials. *Am. J. Trop. Med. Hyg.* **73**, 191–8 (2005).
5. Rockett, R. J. *et al.* A real-time, quantitative PCR method using hydrolysis probes for the monitoring of *Plasmodium falciparum* load in experimentally infected human volunteers. *Malar. J.* **10**, 48 (2011).
6. Okebe, J. *et al.* School-Based Countrywide Seroprevalence Survey Reveals Spatial Heterogeneity in Malaria Transmission in the Gambia. *PLoS One* **9**, e110926 (2014).
7. van den Hoogen, L. L. *et al.* Serology describes a profile of declining malaria transmission in Farafenni, The Gambia. *Malar. J.* **14**, 416 (2015).
8. Drakeley, C. J. *et al.* Estimating medium- and long-term trends in malaria transmission by using serological markers of malaria exposure. *Proc. Natl. Acad. Sci. U. S. A.* **102**, 5108–13 (2005).
9. Cook, J. *et al.* Serological markers suggest heterogeneity of effectiveness of malaria control

- 421 interventions on Bioko Island, equatorial Guinea. *PLoS One* **6**, e25137 (2011).
- 422 10. Biggs, J. *et al.* Serology reveals heterogeneity of *Plasmodium falciparum* transmission in
423 northeastern South Africa: implications for malaria elimination. *Malar. J.* **16**, 48 (2017).
- 424 11. Helb, D. A. *et al.* Novel serologic biomarkers provide accurate estimates of recent
425 *Plasmodium falciparum* exposure for individuals and communities. *Proc. Natl. Acad. Sci. U. S.*
426 *A.* **112**, E4438-47 (2015).
- 427 12. Kerkhof, K. *et al.* Serological markers to measure recent changes in malaria at population
428 level in Cambodia. *Malar. J.* **15**, 529 (2016).
- 429 13. Mwesigwa, J. *et al.* Residual malaria transmission dynamics varies across The Gambia despite
430 high coverage of control interventions. *PLoS One* **12**, e0187059 (2017).
- 431 14. Wu, L. *et al.* Optimisation and standardisation of a multiplex immunoassay of diverse
432 *Plasmodium falciparum* antigens to assess changes in malaria transmission using sero-
433 epidemiology. *Wellcome Open Res.* **4**, 26 (2019).
- 434 15. Snounou, G. Genotyping of *Plasmodium* spp. Nested PCR. *Methods Mol. Med.* **72**, 103–116
435 (2002).
- 436 16. Helb, D. A. *et al.* Novel serologic biomarkers provide accurate estimates of recent
437 *Plasmodium falciparum* exposure for individuals and communities. *Proc. Natl. Acad. Sci. U. S.*
438 *A.* **112**, E4438-47 (2015).
- 439 17. Stewart, L. *et al.* Rapid assessment of malaria transmission using age-specific sero-conversion
440 rates. *PLoS One* **4**, e6083 (2009).
- 441 18. Drakeley, C. J. *et al.* Estimating medium- and long-term trends in malaria transmission by
442 using serological markers of malaria exposure. *Proc. Natl. Acad. Sci. U. S. A.* **102**, 5108–13
443 (2005).
- 444 19. Bruce-Chwatt, L. J., Draper, C. C. & Konfortion, P. Seroepidemiological evidence of eradication

- 445 of malaria from Mauritius. *Lancet (London, England)* **2**, 547–51 (1973).
- 446 20. Wong, J. *et al.* Serological markers for monitoring historical changes in malaria transmission
447 intensity in a highly endemic region of Western Kenya, 1994-2009. *Malar. J.* **13**, 451 (2014).
- 448 21. Yman, V. *et al.* Antibody acquisition models: A new tool for serological surveillance of malaria
449 transmission intensity. *Sci. Rep.* **6**, 19472 (2016).
- 450 22. Irion, A., Beck, H. P. & Smith, T. Assessment of positivity in immuno-assays with variability in
451 background measurements: a new approach applied to the antibody response to *Plasmodium*
452 *falciparum* MSP2. *J. Immunol. Methods* **259**, 111–8 (2002).
- 453 23. Vidarsson, G., Dekkers, G. & Rispens, T. IgG Subclasses and Allotypes: From Structure to
454 Effector Functions. *Front. Immunol.* **5**, (2014).
- 455 24. Dobaño, C. *et al.* Age-dependent IgG subclass responses to *Plasmodium falciparum* EBA-175
456 are differentially associated with incidence of malaria in Mozambican children. *Clin. Vaccine*
457 *Immunol.* **19**, 157–66 (2012).
- 458 25. Tongren, J. E. *et al.* Target antigen, age, and duration of antigen exposure independently
459 regulate immunoglobulin G subclass switching in malaria. *Infect. Immun.* **74**, 257–64 (2006).
- 460 26. Stanisic, D. I. *et al.* Acquisition of antibodies against *Plasmodium falciparum* merozoites and
461 malaria immunity in young children and the influence of age, force of infection, and
462 magnitude of response. *Infect. Immun.* **83**, 646–60 (2015).
- 463 27. Takala, S. L. & Plowe, C. V. Genetic diversity and malaria vaccine design, testing and efficacy:
464 preventing and overcoming ‘vaccine resistant malaria’. *Parasite Immunol.* **31**, 560–573
465 (2009).
- 466 28. Scherf, A., Lopez-Rubio, J. J. & Riviere, L. Antigenic Variation in *Plasmodium falciparum*. *Annu.*
467 *Rev. Microbiol.* **62**, 445–470 (2008).
- 468 29. Neafsey, D. E. *et al.* Genetic Diversity and Protective Efficacy of the RTS,S/AS01 Malaria

Vaccine. *N. Engl. J. Med.* **373**, 2025–2037 (2015).

30. Krishnarajuna, B. *et al.* Strain-transcending immune response generated by chimeras of the malaria vaccine candidate merozoite surface protein 2. *Sci. Rep.* **6**, 20613 (2016).

31. Mosha, J. F. *et al.* Epidemiology of subpatent Plasmodium falciparum infection: implications for detection of hotspots with imperfect diagnostics. *Malar. J.* **12**, 221 (2013).

32. Greenhouse, B. *et al.* Priority use cases for antibody-detecting assays of recent malaria exposure as tools to achieve and sustain malaria elimination. *Gates Open Res.* **3**, 131 (2019).

33. Hsiang, M. S. *et al.* Active Case Finding for Malaria: A 3-Year National Evaluation of Optimal Approaches to Detect Infections and Hotspots Through Reactive Case Detection in the Low-transmission Setting of Eswatini. *Clin. Infect. Dis.* (2019). doi:10.1093/cid/ciz403

Table 1. Serology sample size. Number of compounds and individuals by village and survey month.

Compounds		Individuals			
West Coast Region		July 2013	December 2013	April 2014	December 2014
<i>Besse</i>	69	401	388	-	-
<i>N'Demban</i>	24	136	138	-	-
Subtotal WCR	93	537	526	-	-
Upper River Region					
<i>Njaiyal</i>	28	382	181	298	286
<i>Madina Samako</i>	43	397	451	525	471
Subtotal URR	71	779	632	823	757
Total	164	1316	1158	823	757

Table 2. Study subject characteristics by region and survey month, n (%) out of total individual in monthly survey

West Coast Region	July 2013	December 2013	April 2014	December 2014
Gender			-	-
Male	240 (46.3)	227 (45.0)		
Female	278 (53.7)	277 (55.0)	-	-
Age category				
<5 years	112 (21.5)	104 (20.5)	-	-
5 -15 years	188 (36.1)	195 (38.5)	-	-
>15 years	221 (42.4)	208 (41.0)	-	-
LLIN use 24hr	519 (96.6)	492 (94.3)	-	-
Upper River Region	July 2013	December 2013	April 2014	December 2014
Gender				
Male	371 (47.9)	287 (45.7)	401 (49.0)	359 (47.5)
Female	404 (52.1)	341 (54.3)	417 (51.0)	396 (52.5)
Age category				
<5 years	164 (21.5)	144 (23.3)	186 (23.0)	175 (23.6)
5 -15 years	260 (34.1)	234 (37.8)	304 (37.6)	258 (34.9)
>15 years	339 (44.4)	241 (38.9)	318 (39.4)	307 (41.5)
LLIN use 24hr	278 (46.6)	245 (41.7)	301 (43.8)	283 (46.2)

Table 3. Regional sero-prevalence (ages 2-10 years) by antigen and all-age incidence rates for clinical malaria and *Pf* infection. Mean sero-prevalence (%) and incidence rates with 95%CI shown in parentheses.

	West Coast Region (WCR)		Upper River Region (URR)	
	July 2013	December 2013	July 2013	December 2013
Clinical incidence rate	0.08 (0.04 - 0.21)	0.14 (0.04 - 0.44)	0.13 (0.04 - 0.39)	0.21 (0.1 - 0.51)
<i>Pf</i> infection incidence rate	0.23 (0.13 - 0.39)	0.67 (0.40 - 1.13)	0.56 (0.42 - 0.74)	2.87 (2.36 - 3.50)
Sero-prevalence (ages 2-10 years)				
Etramp5.Ag1	4.8% (1.9 - 7.8)	13.7% (8.9 - 18.5)	8.7% (5.4 - 12.1)	33.6% (27.6 - 39.6)

GEXP18	12.6% (8.0 – 17.1)	12.7% (8.0 – 17.3)	25.1% (20.0 – 30.2)	36.1% (30.0 – 42.2)
HSP40.Ag1	6.3% (3.0 - 9.6)	6.1% (2.8 - 9.4)	8.4% (5.1 - 11.6)	24.1% (18.7 - 29.5)
Rh2.2030	1.4% (0.0 - 3.1)	1.0% (0.0 - 2.4)	9.8% (6.3 - 13.3)	25.3% (19.8 - 30.8)
EBA175	1.9% (0.1 - 3.8)	1.0% (0.0 - 2.4)	7.3% (4.2 - 10.3)	15.8% (11.2 - 20.4)
PfMSP1₁₉	3.4% (0.9 - 5.8)	8.1% (4.3 - 11.9)	5.1% (2.5 - 7.7)	22.0% (16.8 - 27.2)
PfAMA1	4.8% (1.9 - 7.8)	4.1% (1.3 - 6.8)	17.8% (13.3 - 22.3)	33.2% (27.2 - 39.1)

Table 4. Pearson's correlation coefficients between regional sero-prevalence (ages 2-10 years) and all-age incidence rates for clinical malaria and *Pf* infection. Correlation estimates are based on data from the West Coast Region (WCR) and Upper River Region (URR) in July and December 2013. Correlations excluding data from URR December 2013 are shown in brackets.

Antigen	Pearson's correlation coefficient	
	Sero-prevalence vs. Clinical incidence rate	Sero-prevalence vs. <i>Pf</i> infection incidence rate
Etramp5.Ag1	0.98 [0.96]	0.98 [0.98]
GEXP18	0.90 [0.69]	0.84 [0.63]
HSP40.Ag1	0.95 [0.85]	0.99 [0.81]
EBA175	0.87 [0.40]	0.91 [0.32]
Rh2.2030	0.88 [0.39]	0.94 [0.31]
PfMSP1₁₉	0.97 [0.96]	0.99 [0.98]
PfAMA1	0.87 [0.48]	0.89 [0.40]

Table 5. Odds of clinical malaria and asymptomatic infection by individual serological status, unadjusted and adjusted for age group (<5 years, 5-15 years, and > 15 years) and LLIN use in the last 24 hours.

Odds of clinical malaria or asymptomatic infection amongst sero-positive individuals, by antigen						
	OR	Unadjusted 95%CI	p-value	aOR	Adjusted 95%CI	p-value
Etramp5.Ag1						
<i>Clinical malaria</i>	5.50	3.33 - 9.07	<0.001	4.56	2.94 - 7.06	<0.001
<i>Asymptomatic infection</i>	3.24	2.67 - 3.94	<0.001	3.36	2.75 - 4.11	<0.001
GEXP18						
<i>Clinical malaria</i>	2.40	1.38 - 4.18	0.002	1.40	0.85 - 2.31	0.182
<i>Asymptomatic infection</i>	2.99	2.43 - 3.68	<0.001	3.10	2.50 - 3.85	<0.001
HSP40.Ag1						
<i>Clinical malaria</i>	1.63	0.91 - 2.90	0.099	0.97	0.58 - 1.61	0.903
<i>Asymptomatic infection</i>	2.57	2.11 - 3.13	<0.001	2.66	2.14 - 3.31	<0.001
Rh2.2030						
<i>Clinical malaria</i>	2.08	1.08 - 4.01	0.029	1.13	0.66 - 1.93	0.662
<i>Asymptomatic infection</i>	2.51	2.04 - 3.10	<0.001	3.10	2.44 - 3.94	<0.001
EBA175						
<i>Clinical malaria</i>	1.32	0.66 - 2.66	0.431	1.19	0.65 - 2.17	0.574

<i>Asymptomatic infection</i>	2.13	1.77 – 2.56	<0.001	2.68	2.09 - 3.94	<0.001
<i>PfMSP1₁₉</i>						
<i>Clinical malaria</i>	3.54	1.88 - 6.69	<0.001	3.82	2.41 - 6.04	<0.001
<i>Asymptomatic infection</i>	2.33	1.87 - 2.92	<0.001	2.50	1.93 - 3.24	<0.001
<i>PfAMA1</i>						
<i>Clinical malaria</i>	2.20	1.26 - 3.86	0.006	2.18	1.23 - 3.84	0.007
<i>Asymptomatic infection</i>	2.66	2.16 - 3.29	<0.001	3.83	2.95 - 4.98	<0.001

Table 6. Odds of clinical malaria and asymptomatic *Pf* infection by compound serological status.
Estimates are weighted by compound size and shown as unadjusted odds ratios (OR) and adjusted odds ratios (aOR) for age group (<5 years, 5-15 years, and > 15 years).

Odds of clinical malaria or asymptomatic <i>Pf</i> infection for individuals residing in sero-positive compounds						
	Unadjusted			Adjusted		
	OR	95%CI	p-value	aOR	95%CI	p-value
Etramp5.Ag1						
<i>Clinical malaria</i>	0.18	0.03 - 1.00	0.050	0.17	0.03 - 0.84	0.030
<i>Asymptomatic infection</i>	2.91	1.66 - 5.12	<0.001	2.95	1.66 - 5.24	<0.001
GEXP18						
<i>Clinical malaria</i>	0.12	0.02 - 0.84	0.032	0.11	0.02 - 0.68	0.017
<i>Asymptomatic infection</i>	2.74	1.61 - 4.67	<0.001	2.71	1.58 - 4.63	<0.001
HSP40.Ag1						
<i>Clinical malaria</i>	0.13	0.02 - 0.76	0.023	0.12	0.02 - 0.66	0.015
<i>Asymptomatic infection</i>	1.35	0.78 - 2.34	0.281	1.42	0.81 - 2.48	0.226
Rh2.2030						
<i>Clinical malaria</i>	0.07	0.01 - 0.46	0.006	0.06	0.01 - 0.33	0.001
<i>Asymptomatic infection</i>	1.73	0.97 - 3.06	0.062	1.96	1.12 - 3.44	0.019
EBA175						
<i>Clinical malaria</i>	0.07	0.01 - 0.58	0.014	0.07	0.01 - 0.54	0.011
<i>Asymptomatic infection</i>	1.04	0.53 - 2.05	0.915	1.06	0.53 - 2.13	0.875
<i>PfMSP1₁₉</i>						
<i>Clinical malaria</i>	0.15	0.03 - 0.83	0.030	0.11	0.03 - 0.48	0.003
<i>Asymptomatic infection</i>	1.92	1.17 - 3.14	0.010	2.00	1.21 - 3.29	0.007
<i>PfAMA1</i>						
<i>Clinical malaria</i>	0.06	0.01 - 0.56	0.014	0.05	0.01 - 0.47	0.009
<i>Asymptomatic infection</i>	2.01	1.03 - 3.91	0.040	2.04	1.03 - 4.03	0.041

Figure legends

Figure 1. Map of Malaria Transmission Dynamics Study with regions and study villages by PCR prevalence.

Figure 2. Pearson's correlation between regional sero-prevalence (ages 2-10 years) and all-age incidence rates for clinical malaria and *Pf* infection. Correlations between sero-prevalence and incidence rates for clinical malaria (new clinical episodes divided by person-years at risk) in red and *Pf* infection (new PCR infections divided by person-years at risk) in blue were based on data from the West Coast Region (WCR) and the Upper River Region (URR) in July and December 2013. Correlations excluding data from URR December 2013 shown in brackets.

Figure 3. Odds clinical malaria and asymptomatic infection by a) individual sero-positivity status b) residing in the same compound as a sero-positive individual. Analyses is adjusted for age group (<5 years, 5-15 years, and >15 years) and LLIN use in the last 24 hours and weighted by compound size.

Figure 4. Odds of clinical malaria by compound sero-prevalence (a) and odds of asymptomatic infection by compound sero-prevalence (b). Analyses is adjusted for age group (<5 years, 5-15 years, and >15 years) and LLIN use in the last 24 hours and weighted by compound size.

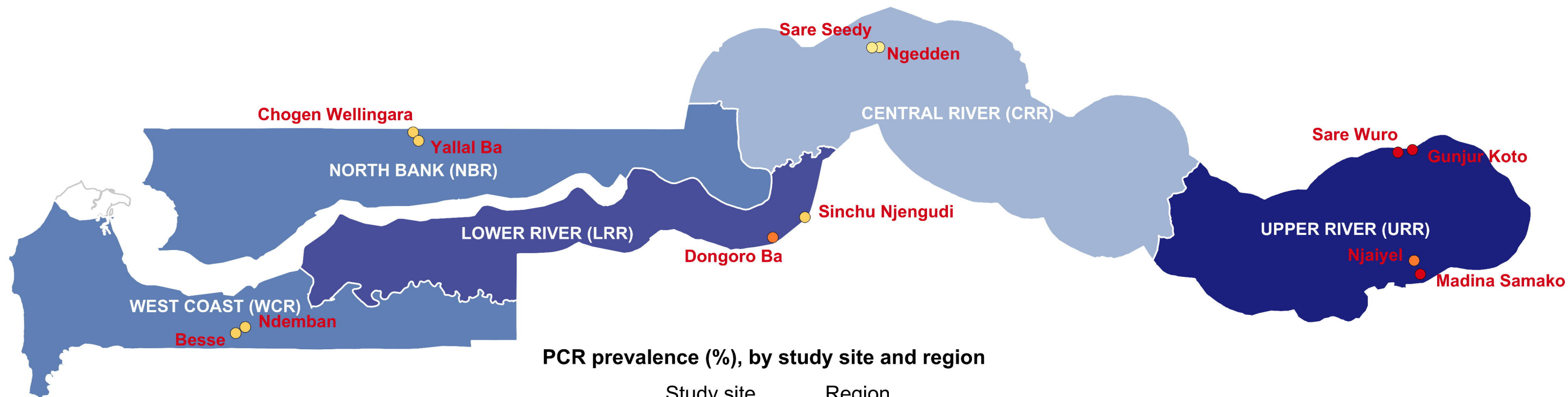
Figure 5. Household geolocation of Etramp5. Ag1 sero-positive, clinical malaria and *Pf* infections across four villages. Spatial distribution of infections shown for lower transmission (N'demban) and higher transmission (Besse) villages in the West Coast Region (WCR) and lower transmission (Njaiyal) and higher transmission (Madina Samako) villages in the Upper River Region (URR). Infections at the start of the wet season (June – July 2013) shown on the left and during the wet and transmission season (August – December 2013) on the right.

Additional files

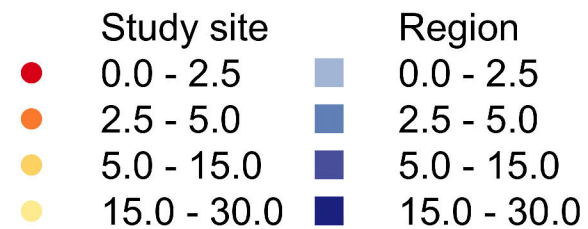
Supplementary 1. Sero-prevalence amongst individuals aged 2 - 10 year and prevalence of sero-positive compounds.

Supplementary 2. Odds of clinical malaria and asymptomatic infection for sero-positive individuals and individuals residing in sero-positive compounds. Unadjusted and adjusted odds ratios for seven malaria antigenic targets - Etramp5.Ag1, GEXP18, HSP40.Ag1, Rh2.2030, EBA175, *Pf*MSP1₁₉, and *Pf*AMA1

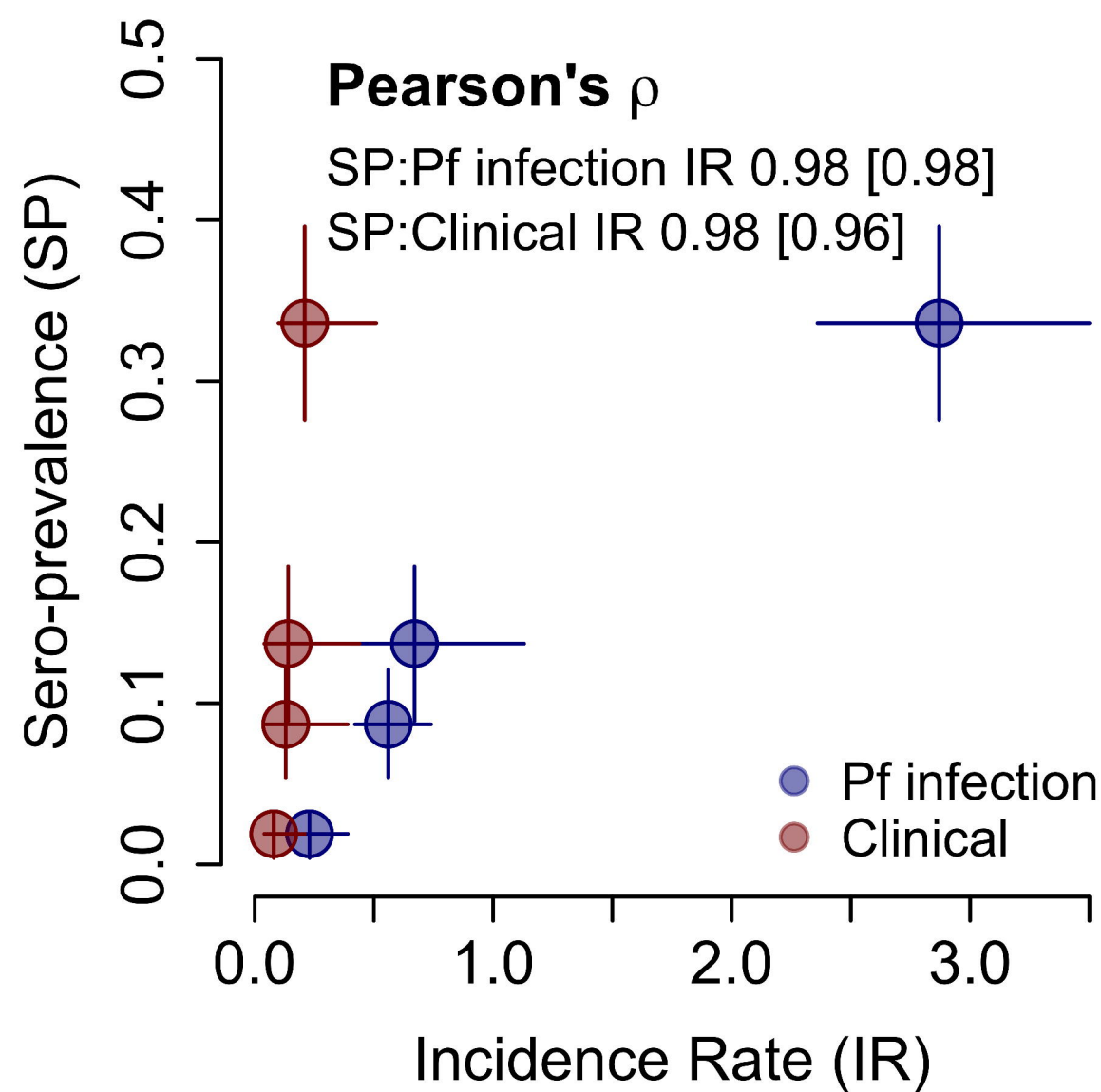
Supplementary 3. Map of household geolocation of *Pf*AMA1 sero-positive, clinical malaria and *Pf* infections across four villages during dry and wet transmission seasons. Spatial distribution of infections shown for lower transmission (N'demban) and higher transmission (Besse) villages in the West Coast Region (WCR) and lower transmission (Njaiyal) and higher transmission (Madina Samako) villages in the Upper River Region (URR). Infections at the start of the wet season (June – July 2013) shown on the left and during the wet and transmission season (August – December 2013) on the right.



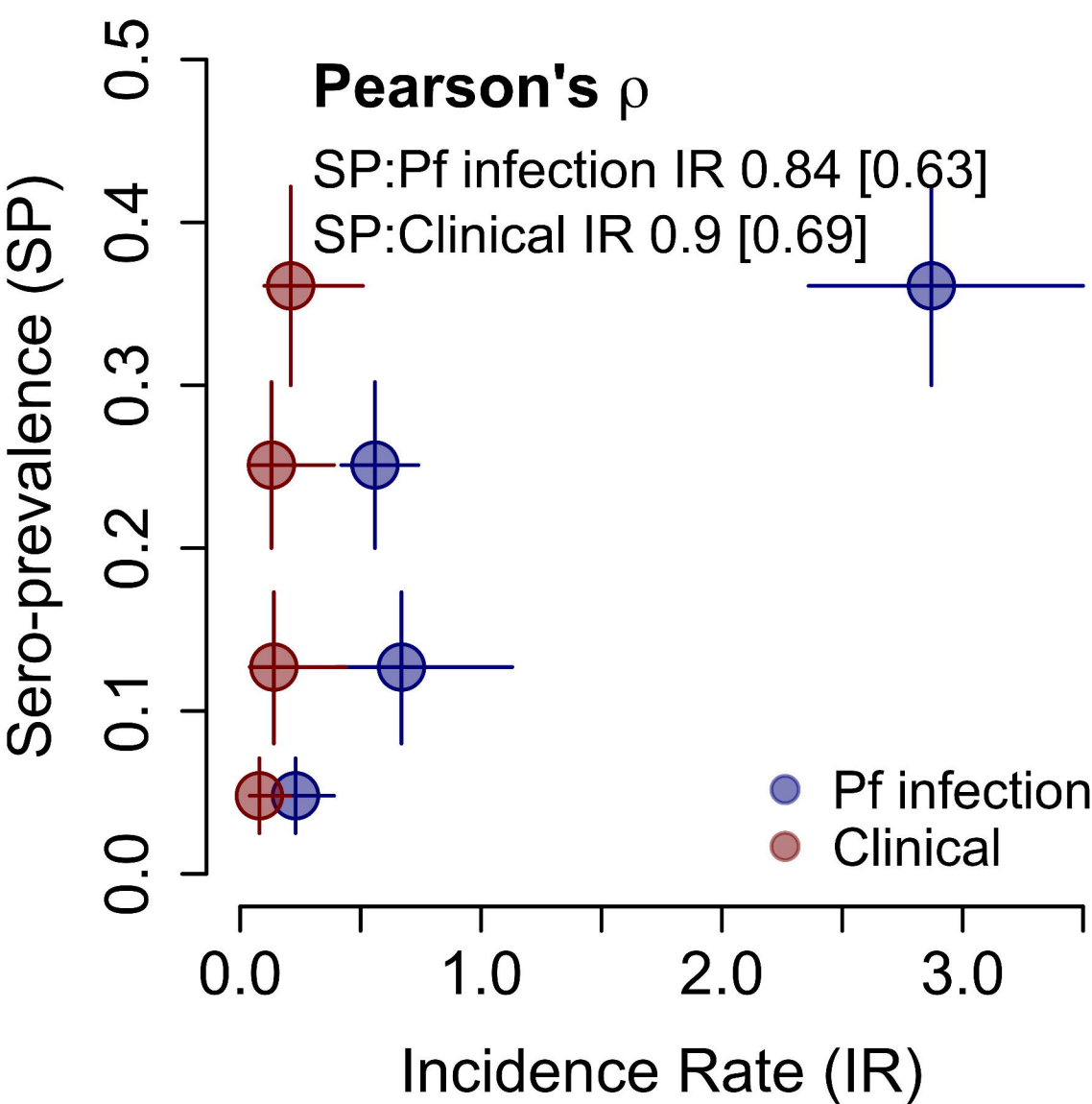
PCR prevalence (%), by study site and region



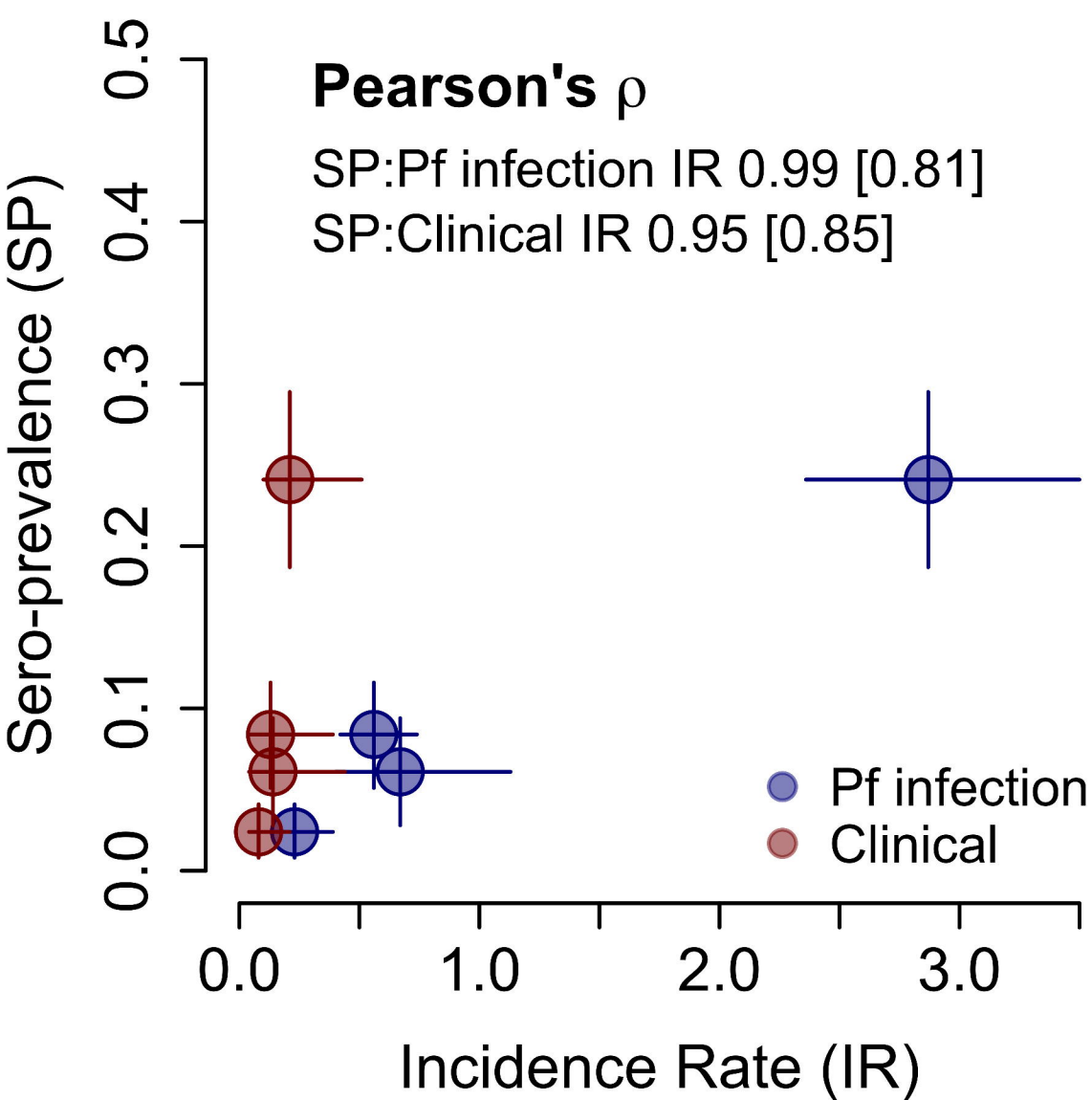
Etramp5.Ag1



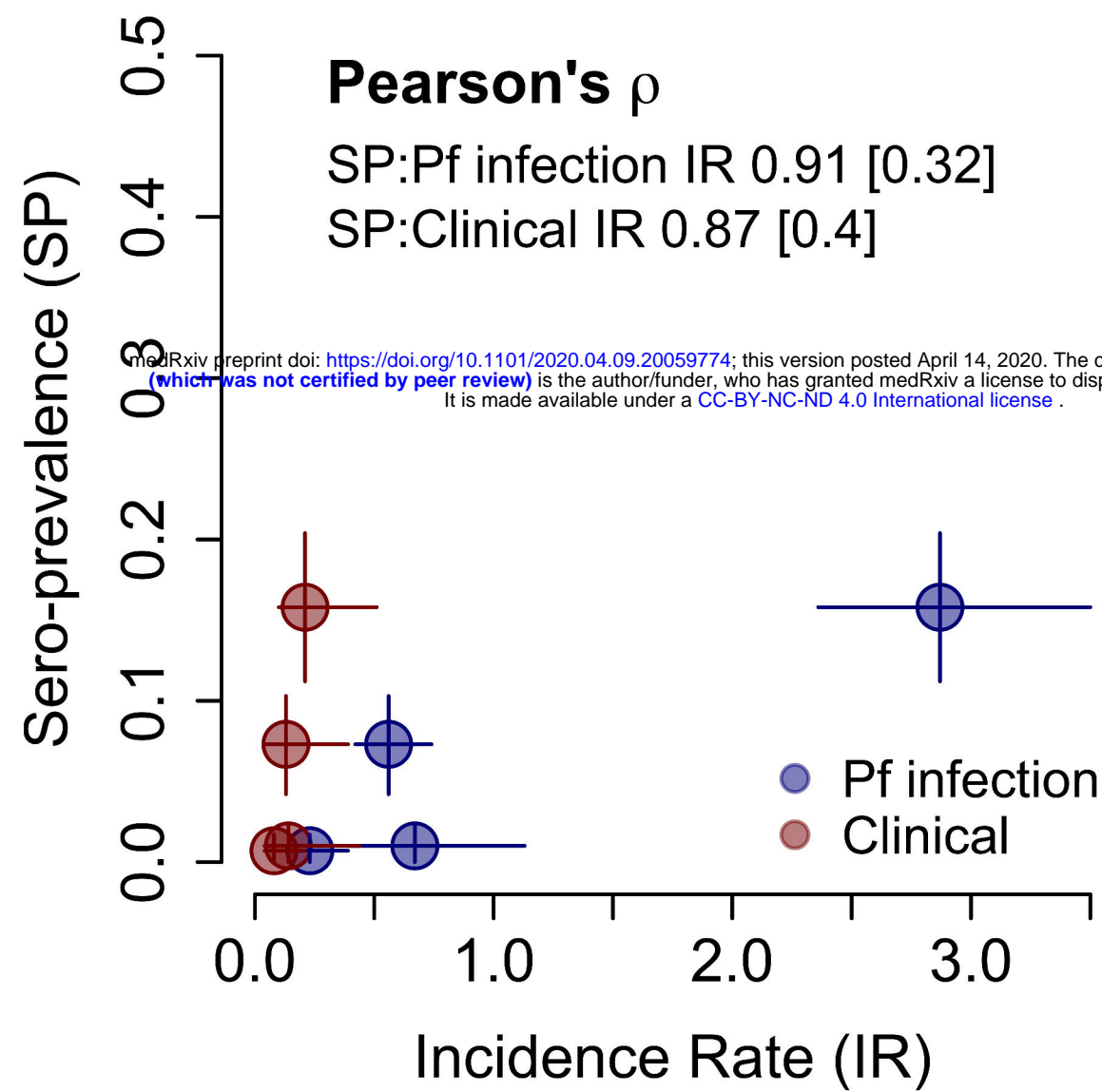
GEXP18



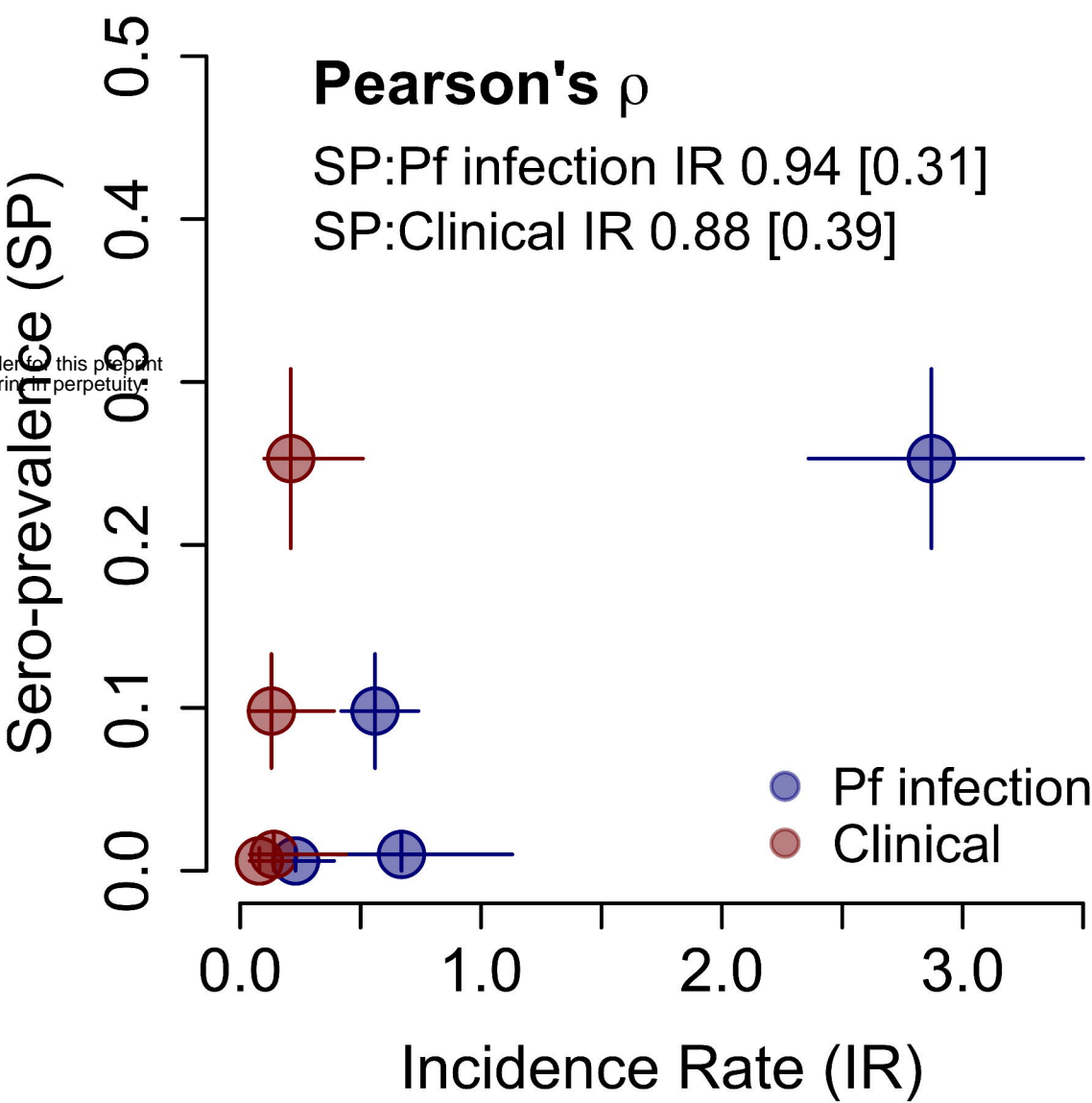
HSP40.Ag1



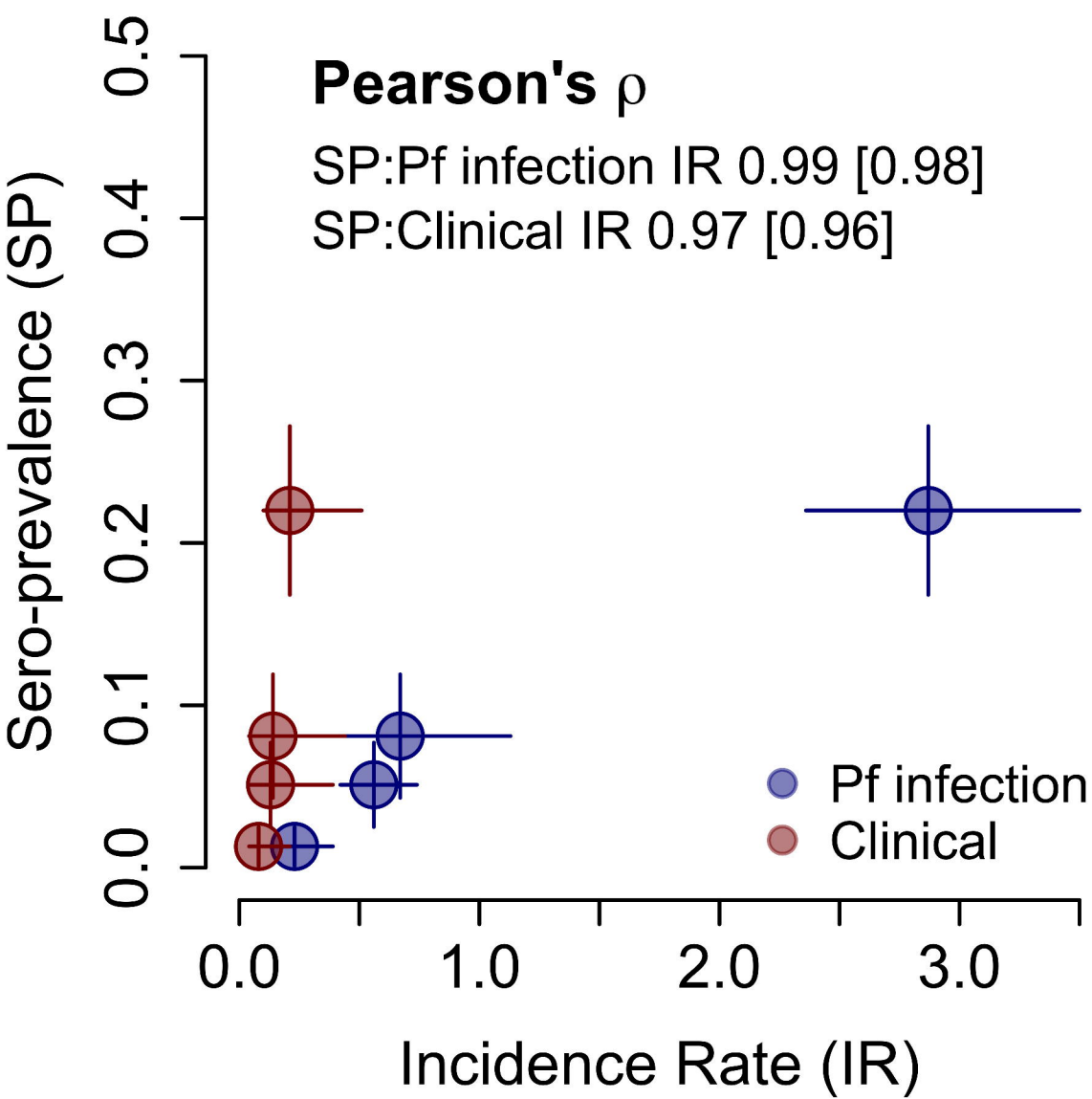
EBA175



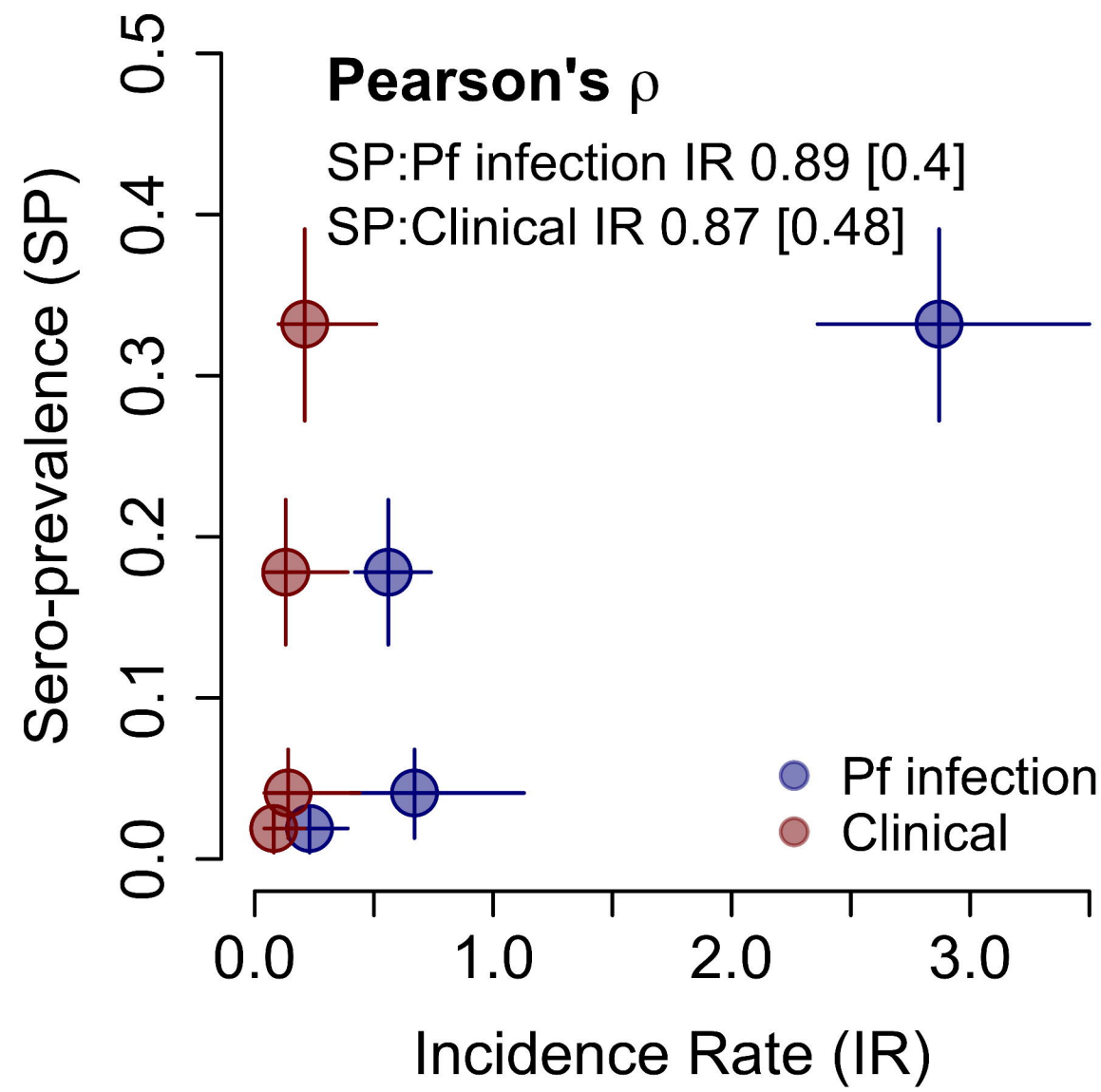
Rh2.2030



PfMSP1.19

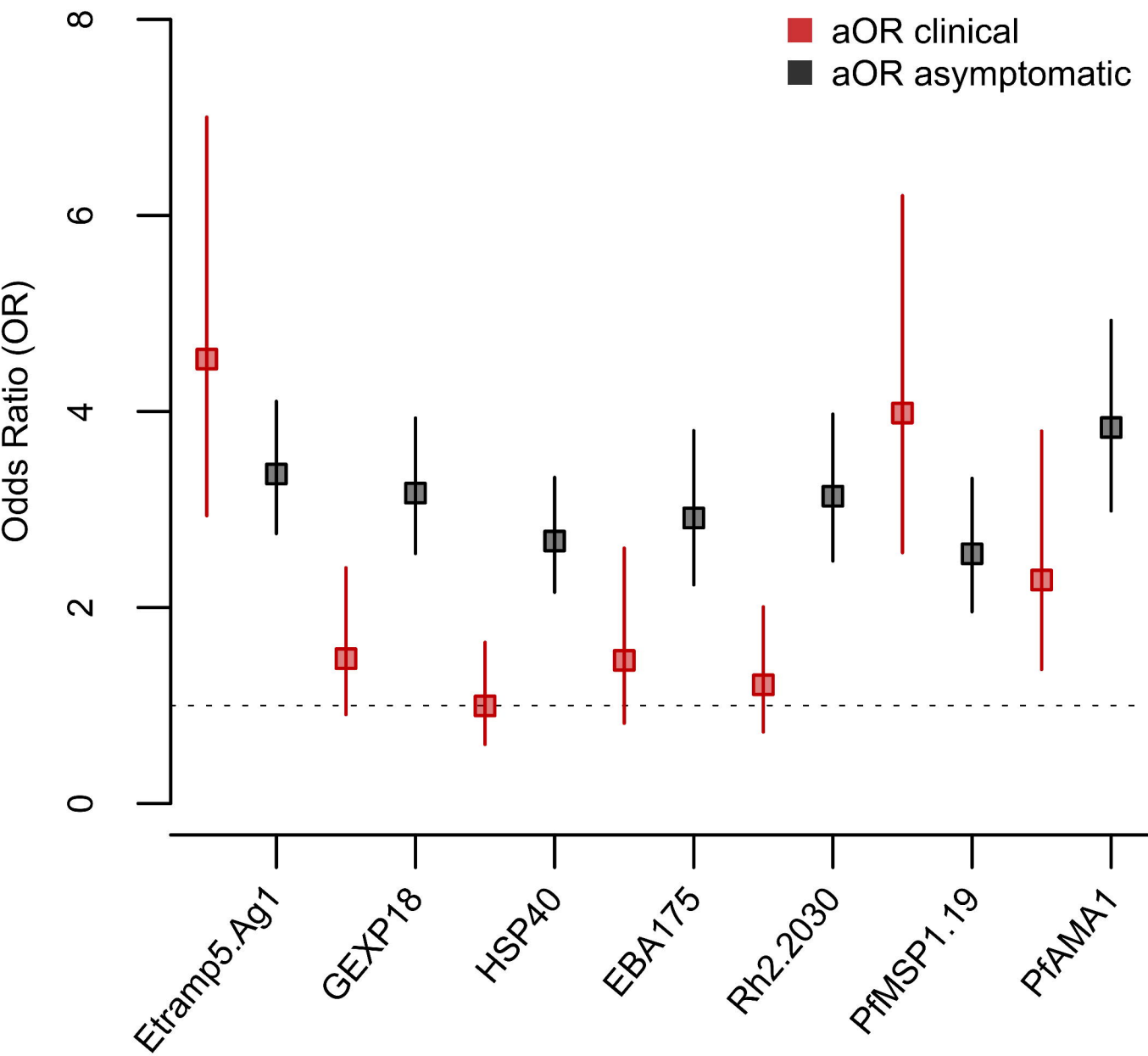


PfAMA1



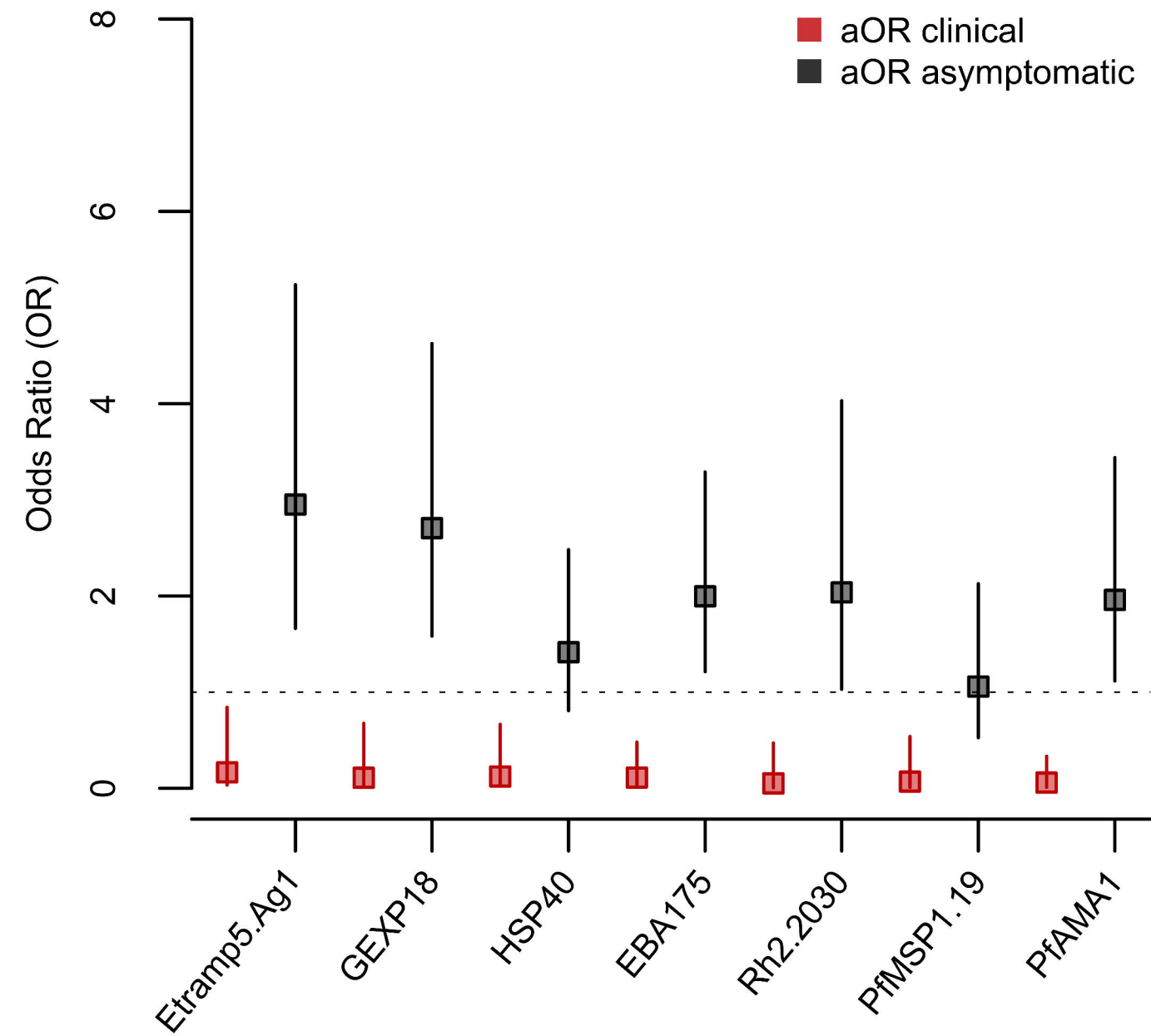
A. Odds of infection in sero-positive individuals

Reference: Sero-negative individuals



B. Odds of infection in sero-positive households

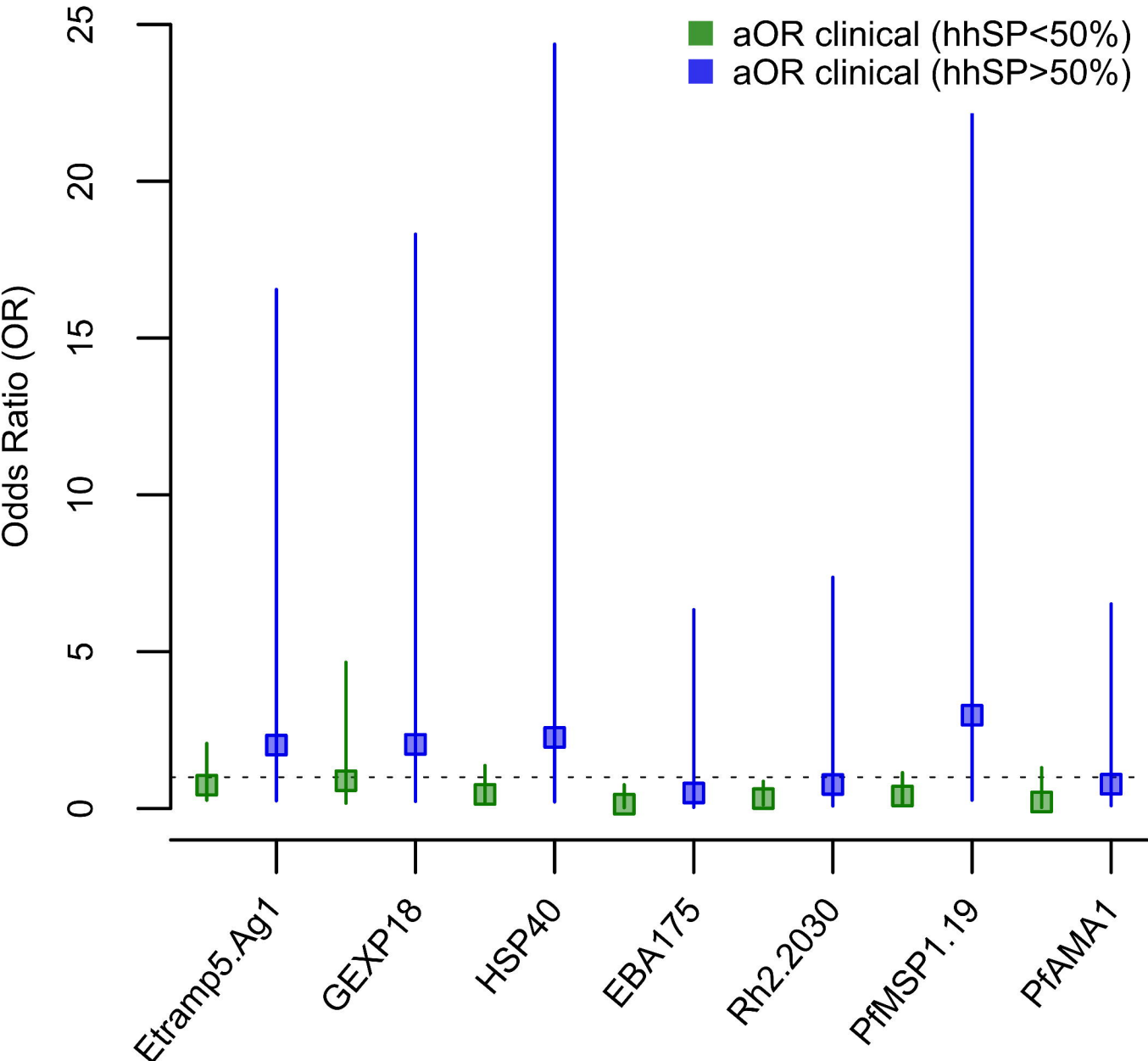
Reference: Individuals in sero-negative households



A. Clinical malaria in sero-positive households

Household sero-prevalence (hhSP) 1-50% and >50%

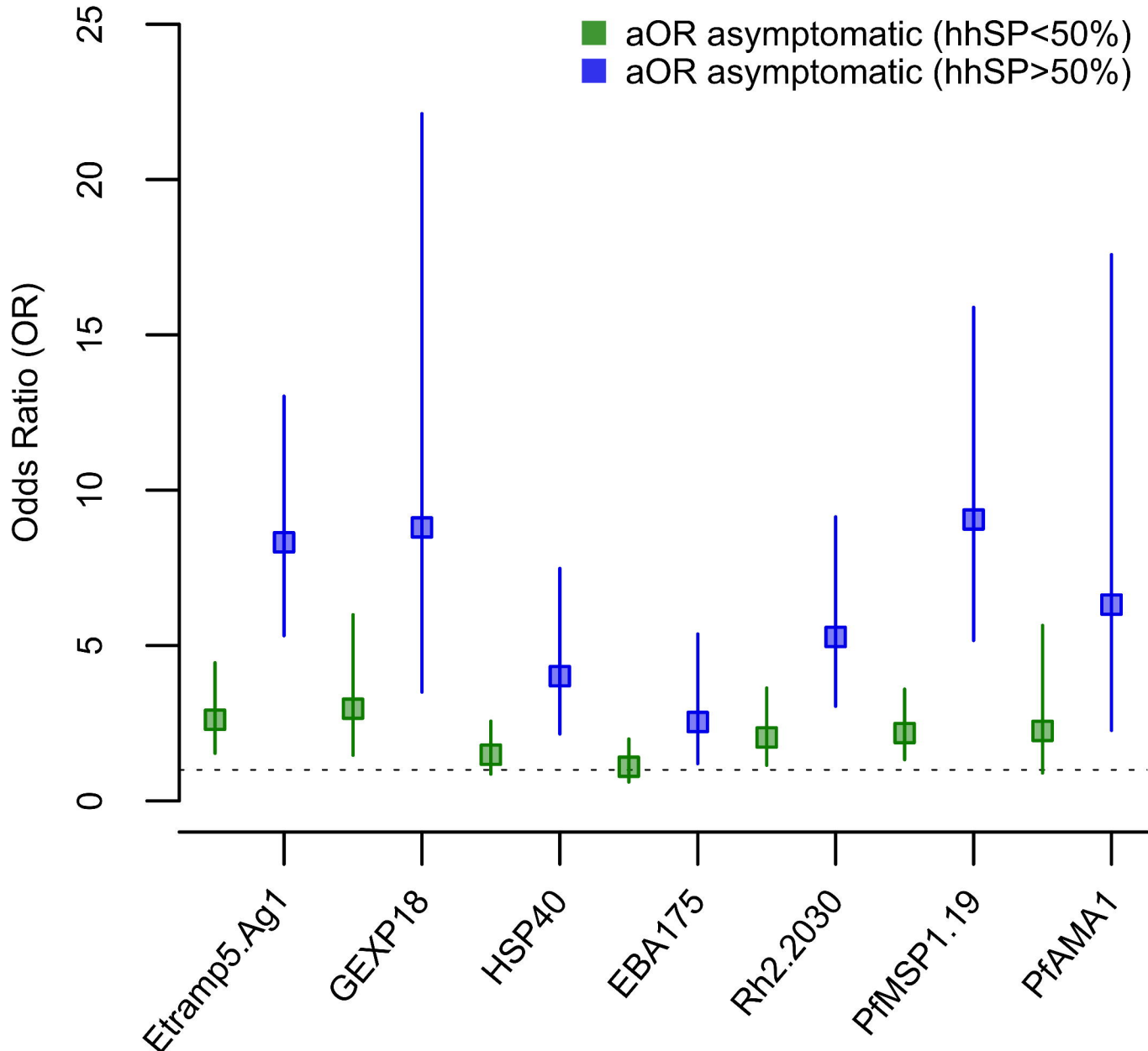
Reference: Household sero-prevalence 0%



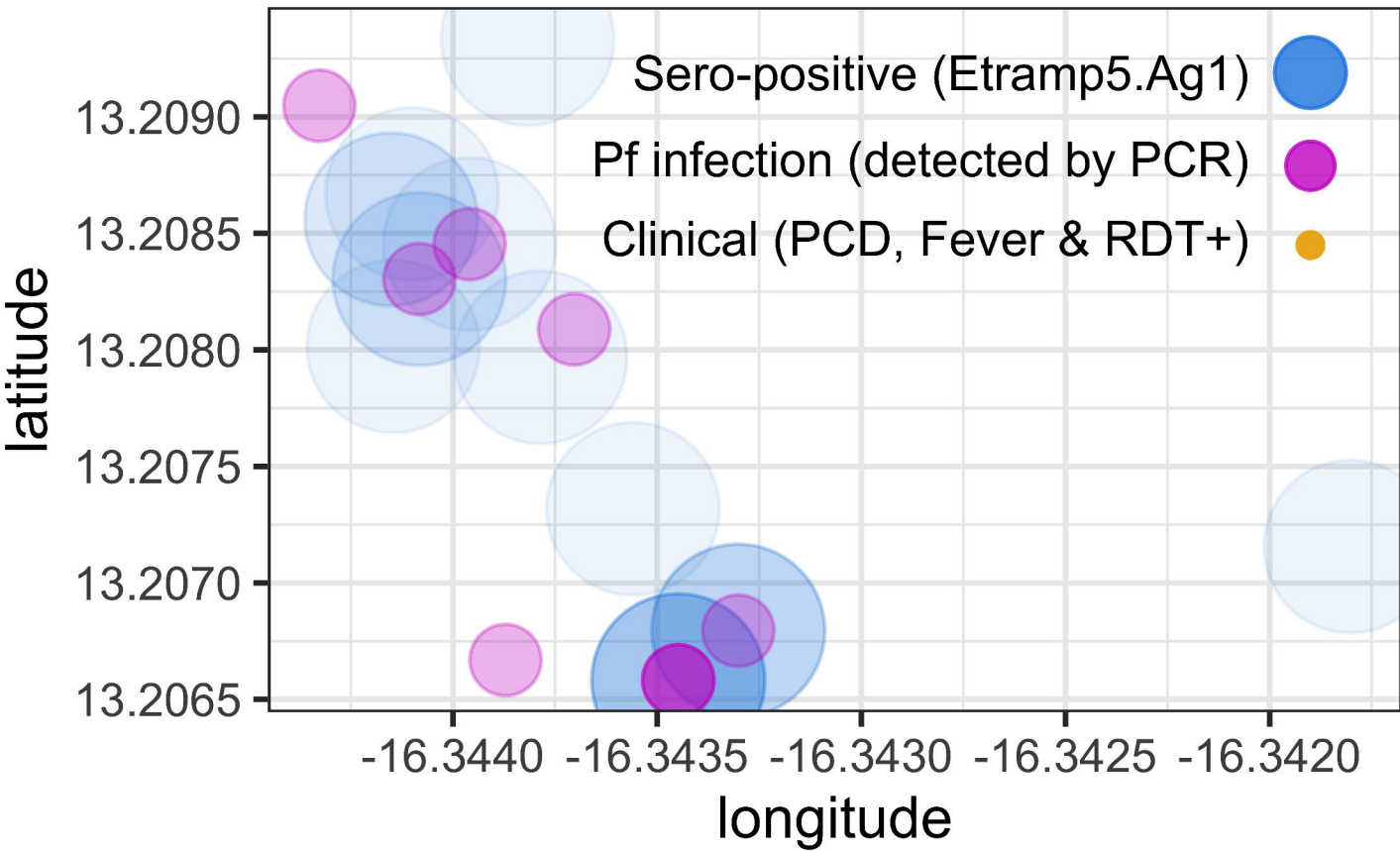
B. Asymptomatic infection in sero-positive households

Household sero-prevalence (hhSP) 1-50% and >50%

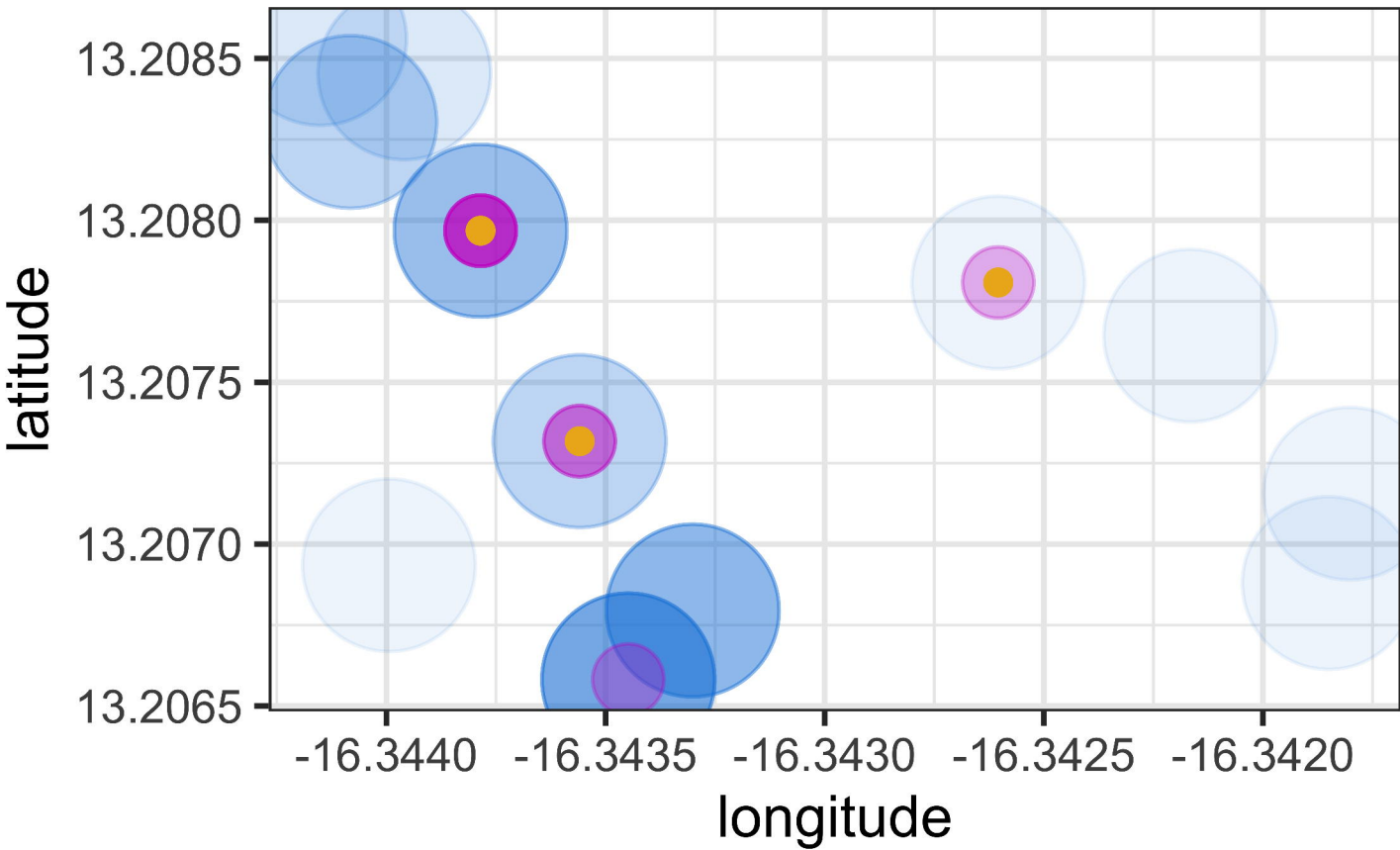
Reference: Household sero-prevalence 0%



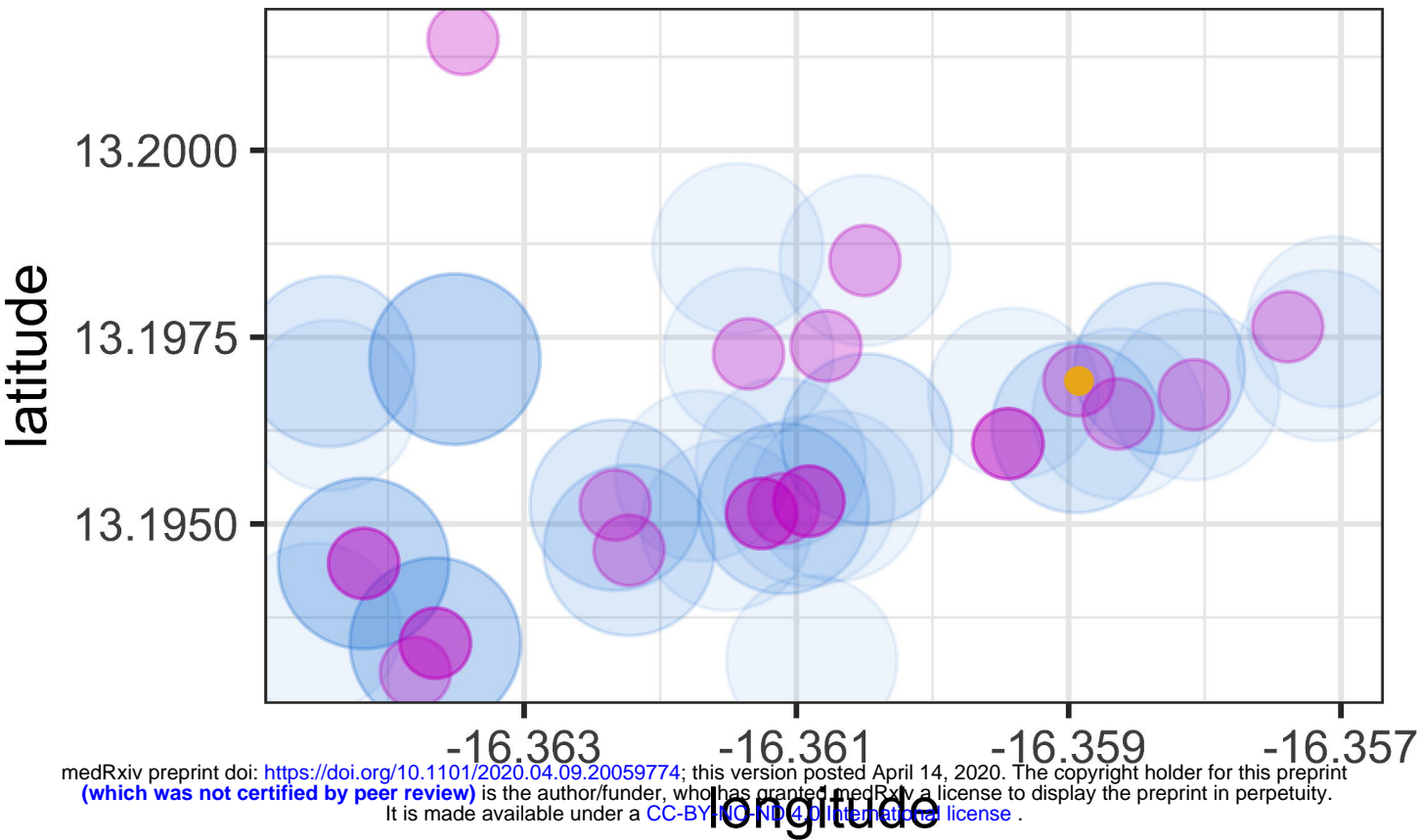
N'demban, WCR | June - July 2013



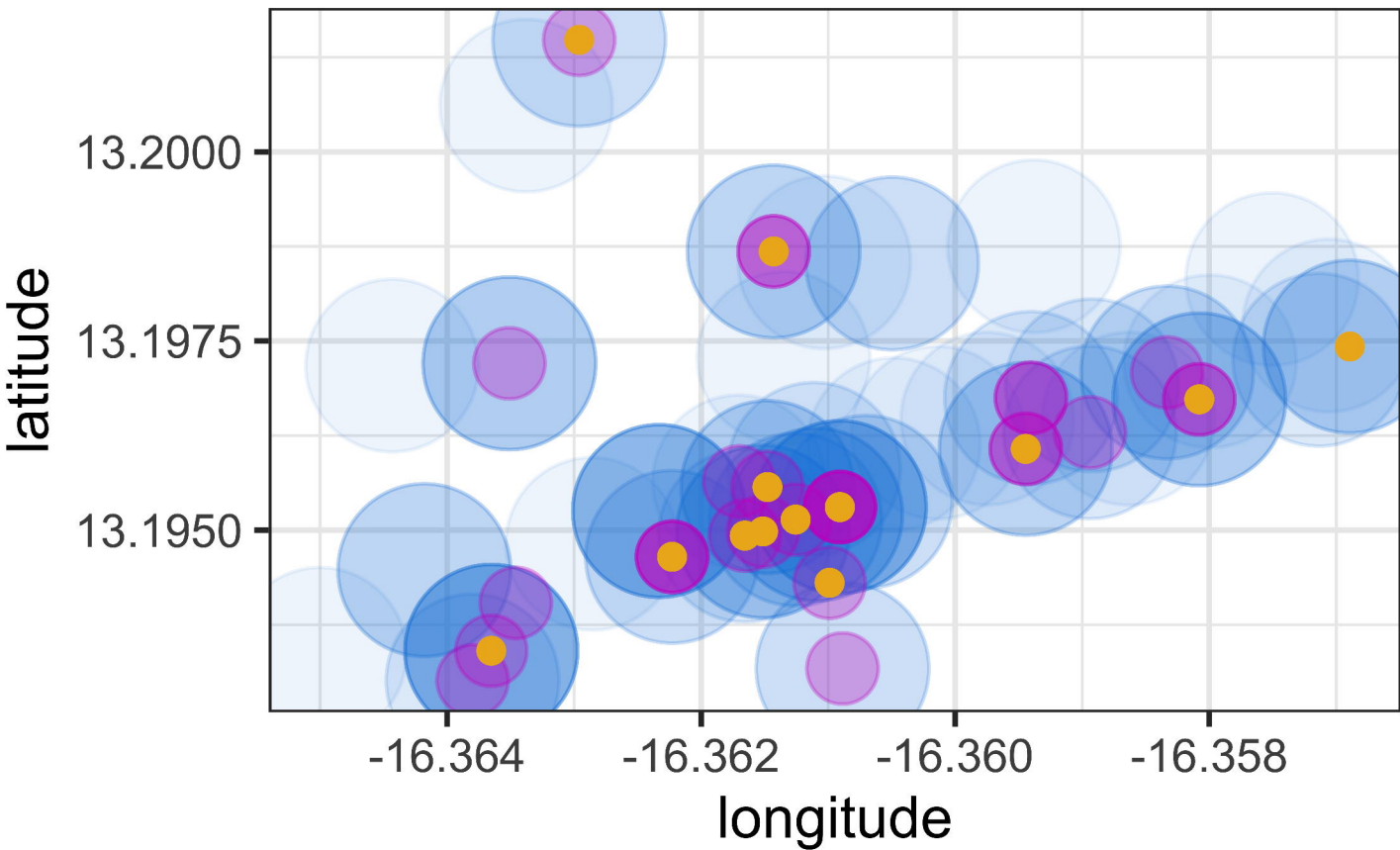
N'demban, WCR | Aug - Dec 2013



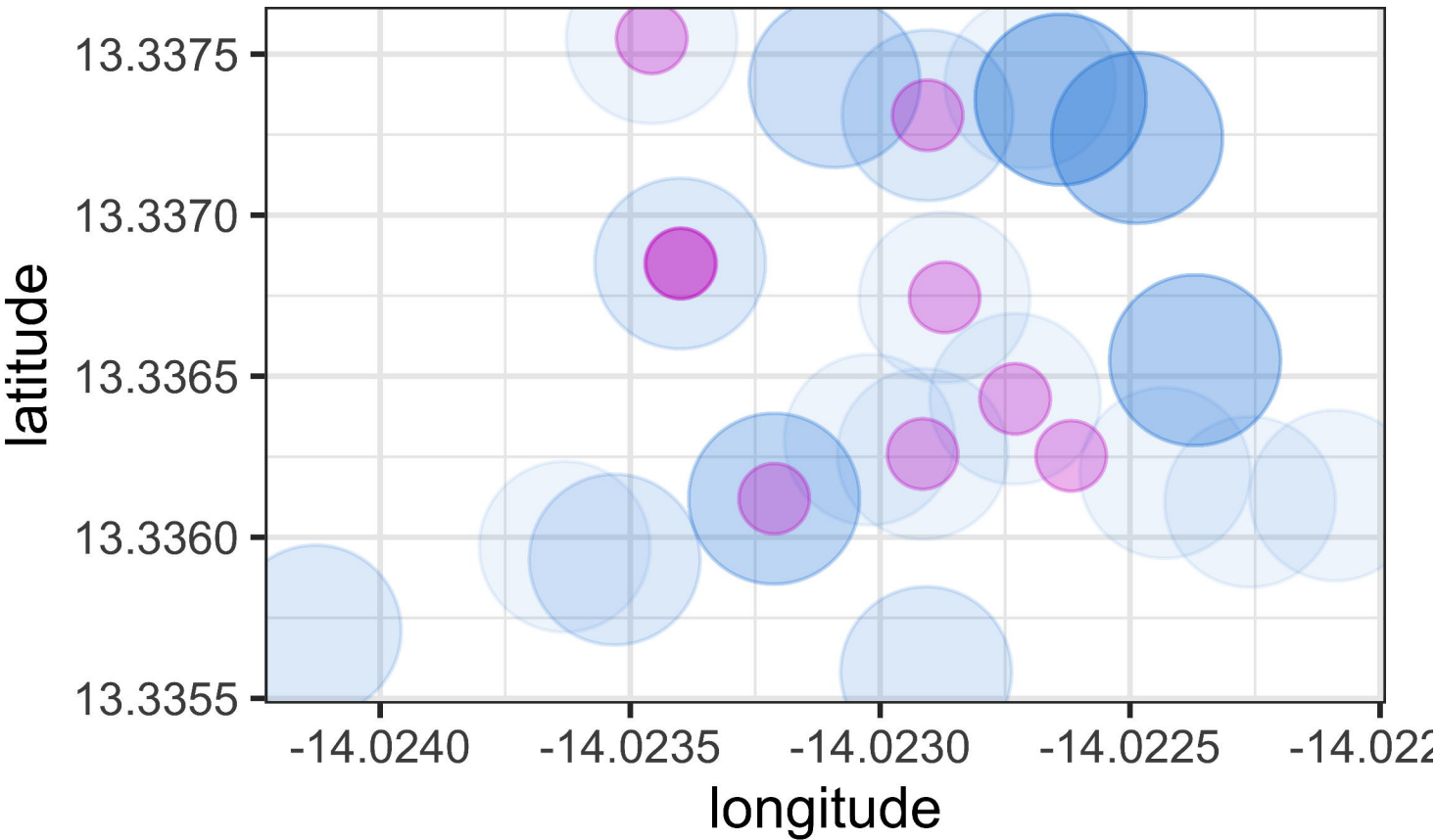
Besse, WCR | June - July 2013



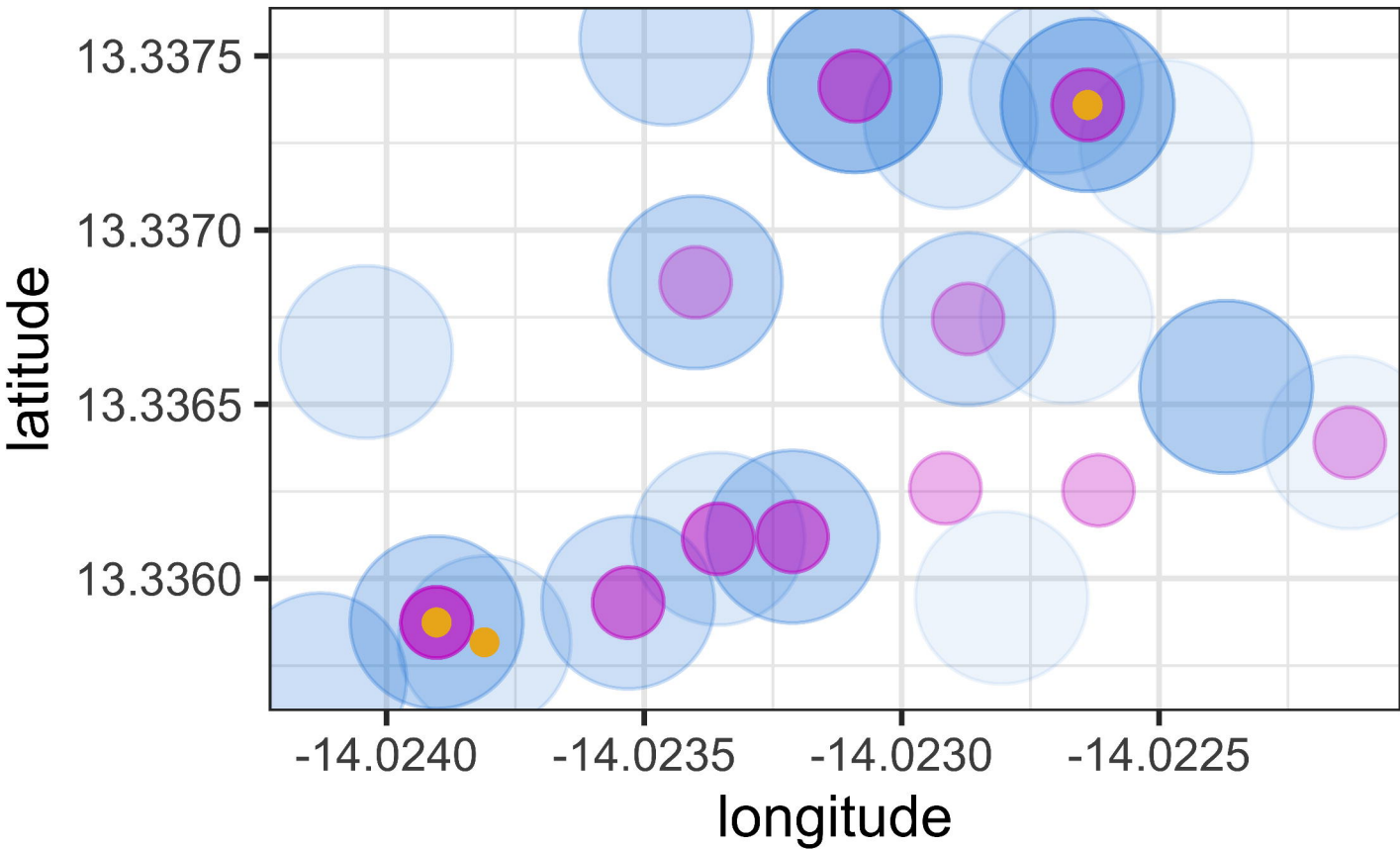
Besse, WCR | Aug - Dec 2013



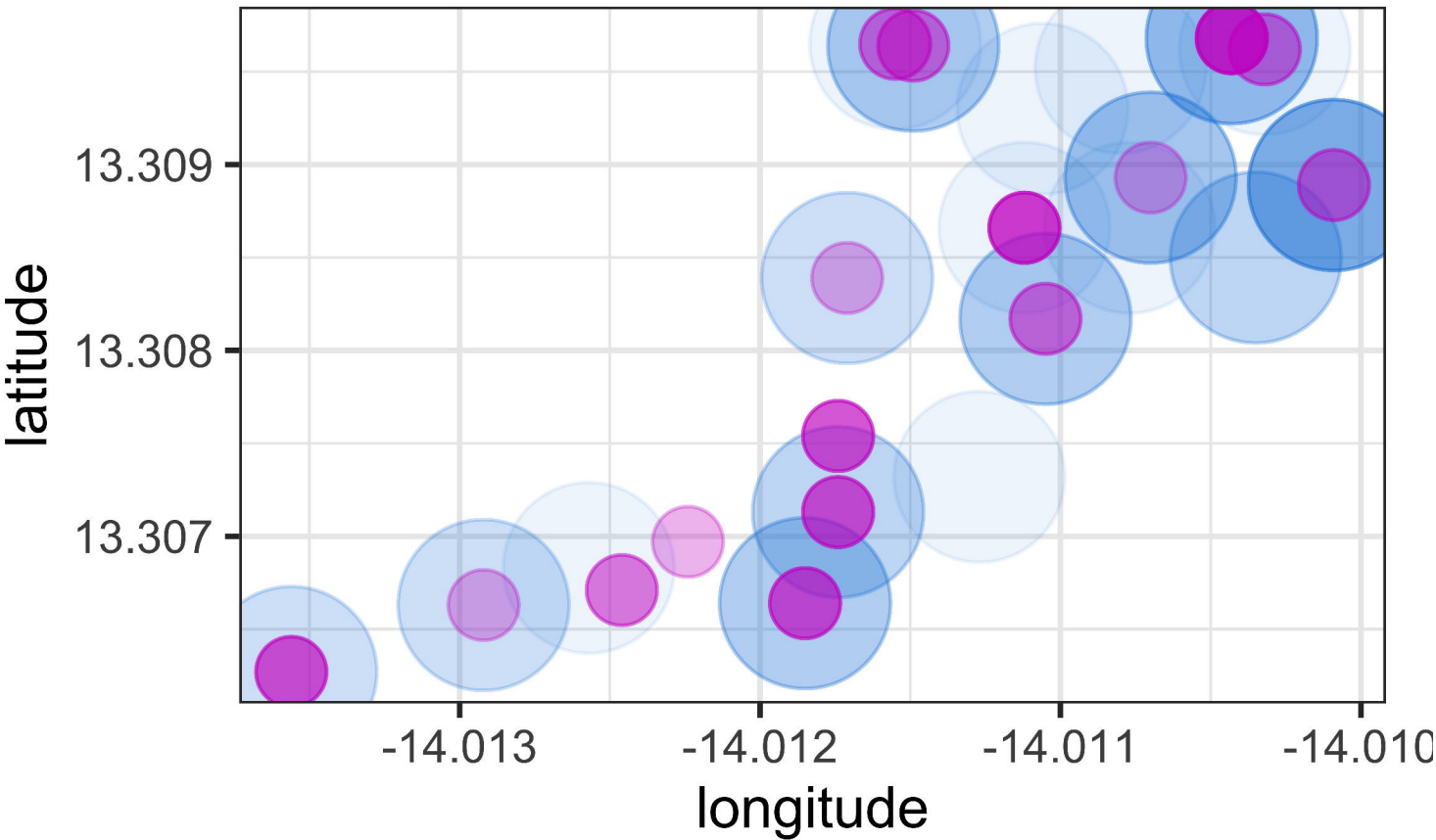
Njaiyal, URR | June - July 2013



Njaiyal, URR | Aug - Dec 2013



Madina Samako, URR | June - July 2013



Madina Samako, URR | Aug - Dec 2013

