

Risk factors for mortality in patients with Coronavirus disease 2019 (COVID-19) infection: a systematic review and meta-analysis of observational studies

Mohammad Parohan^{a*}, PhD, Sajad Yaghoubi^{b*}, PhD, Asal Seraji^c, PhD, Mohammad Hassan Javanbakht^a, PhD, Payam Sarraf^d, MD, Mahmoud Djalali^{a*}, PhD

^aDepartment of Cellular and Molecular Nutrition, School of Nutritional Sciences and Dietetics, Tehran University of Medical Sciences, Tehran, Iran.

^bDepartment of Clinical Microbiology, Iranshahr University of Medical Sciences, Iranshahr, Iran.

^cDepartment of Nursing, Damavand Branch, Islamic Azad University, Damavand, Iran.

^dIranian center of Neurological research, Neuroscience Institute, Tehran University of Medical Sciences, Tehran, Iran.

*Corresponding author:

Mohammad Parohan

Postal address: Tehran University of Medical Sciences, School of Nutritional Sciences and Dietetics, 44 Hojat Dost St, Naderi St, Enghelab Ave, Tehran, Iran. E-mail address: prohan.m742@gmail.com, prohan-m@razi.tums.ac.ir

*Additional corresponding authors:

Sajad Yaghoubi, Email address: sajadyaghoubi98@gmail.com

Mahmoud Djalali, Email address: mjalali87@yahoo.com

Abstract

Purpose: Coronavirus disease 2019 (COVID-19) is an emerging disease that was first reported in Wuhan city, the capital of Hubei province in China, and has subsequently spread worldwide. Risk factors for mortality have not been well summarized. Current meta-analysis of retrospective cohort studies was done to summarize available findings on the association between age, gender, comorbidities and risk of death from COVID-19 infection.

Methods: Online databases including Web of Science, PubMed, Scopus, Cochrane Library and Google scholar were searched to detect relevant publications up to 1 May 2020, using relevant keywords. To pool data, random-effects model was used. Furthermore, sensitivity analysis and publication bias test were also done.

Results: In total, 14 studies with 29,909 COVID-19 infected patients and 1,445 cases of death were included in the current meta-analysis. Significant associations were found between older age (≥ 65 vs < 65 years old) (pooled ORs=4.59, 95% CIs=2.61-8.04, $p < 0.001$), gender (male vs female) (pooled ORs=1.50, 95% CIs=1.06-2.12, $p = 0.021$) and risk of death from COVID-19 infection. In addition, hypertension (pooled ORs=2.70, 95% CIs=1.40-5.24, $p = 0.003$), cardiovascular diseases (CVDs) (pooled ORs=3.72, 95% CIs=1.77-7.83, $p = 0.001$), diabetes (pooled ORs=2.41, 95% CIs=1.05-5.51, $p = 0.037$), chronic obstructive pulmonary disease (COPD) (pooled ORs=3.53, 95% CIs=1.79-6.96, $p < 0.001$) and cancer (pooled ORs=3.04, 95% CIs=1.80-5.14, $p < 0.001$), were associated with higher risk of mortality.

Conclusion: Older age (≥ 65 years old), male gender, hypertension, CVDs, diabetes, COPD and malignancies were associated with greater risk of death from COVID-19 infection. These findings could help clinicians to identify patients with poor prognosis at an early stage.

Keywords: COVID-19; SARS-CoV-2; mortality; systematic review; meta-analysis.

Introduction

In December, 2019, severe acute respiratory syndrome coronavirus 2 (SARS-CoV-2; previously known as 2019-nCoV) was first reported in Wuhan city, the capital of Hubei province in China, and has subsequently spread to other regions of China and 210 countries and territories [1-3]. SARS-CoV-2, which belongs to a unique clade of the sarbecovirus subgenus of the Orthocoronavirinae subfamily [4], was later designated coronavirus disease 2019 (COVID-19) in February, 2020, by World Health Organization.

Patients with COVID-19 present primarily with fever, dry cough and fatigue or myalgia [5]. Although most patients with COVID-19 are thought to have a favorable prognosis, older patients and those with chronic diseases may have worse outcomes [6]. Patients with chronic underlying conditions may develop viral pneumonia, dyspnea and hypoxemia within 1 week after onset of the disease, which may progress to respiratory or end-organ failure and even death [7].

Several studies have reported the clinical characteristics and risk factors associated with death in patients with COVID-19 pneumonia [2,6,8-11]. We aimed to systematically review the present evidences on the association between age, gender, hypertension, diabetes, chronic obstructive pulmonary disease (COPD), cardiovascular diseases (CVDs) and risk of death from COVID-19 infection, and to summarize the available findings in a meta-analysis.

Methods

Study protocol

The present systematic review and meta-analysis were planned, conducted and reported in adherence to the Preferred Reporting Items for Systematic Reviews and Meta-Analyses (PRISMA) guidelines [12].

Search strategy

We performed a literature search using the online databases of Web of Science, PubMed, Scopus, Cochrane Library and Google scholar for relevant publications up to 1 May 2020. The following medical subject headings (MeSH) and non-MeSH keywords were used in our search strategy: (“novel coronavirus” OR “severe acute respiratory syndrome coronavirus 2” OR “SARS-CoV-2” OR “COVID-19” OR “2019-nCoV”) AND (“death” OR “mortality” OR “survival” OR “fatal outcome”). Literature search was done by two independent researchers (MP and SY). We also searched the reference lists of the relevant articles to identify missed studies. No restriction was applied on language and time of publication. To facilitate the screening process of articles from databases, all literature searches were downloaded into an EndNote library (version X8, Thomson Reuters, Philadelphia, USA). The search strategy is presented in detail in Supplementary Table 1.

Eligibility Criteria

In our meta-analysis, eligible articles were included if they met the following inclusion criteria: (1) all studies assessing the association between age, gender, comorbidities and mortality risk from COVID-19 infection as the major outcomes of interest; (2) observational studies with retrospective design; (3) those that reported hazard ratios (HRs), odds ratios (ORs) or relative risks (RRs) along with 95% confidence intervals (CIs) for the relationship between risk factors and COVID-19 mortality. Review articles, expert opinion articles, theses and books were excluded.

Data extraction and assessment for study quality

Two investigators (MP and AS) extracted the following data from the included studies: study design, the first author's name, the publication year, age and gender of patients, sample size, exposure (risk factors), outcome (the risk of mortality), exposure and outcome assessment methods, most adjusted risk estimate (HRs, ORs, RRs) with 95% confidence intervals and adjusted confounding variables.

The Newcastle–Ottawa Scale (NOS) was used for assessing the quality of included retrospective cohort studies based on the following three major components: selection of the study patients, adjustment for potential confounding variables and assessment of outcome [13]. Based on this scale, a maximum of nine points can be awarded to each study. In the present study, articles with the NOS score of ≥ 5 were considered as high quality publications.

Statistical analysis

We used HRs, ORs, and RRs (and their 95% confidence intervals) reported for the association between risk factors and mortality from COVID-19 infection, to calculate log RRs and their standard errors (SEs). Then, the overall effect size for mortality in relation to risk factors was calculated using random-effects model. For examining the between-study heterogeneity, we performed the Cochran's Q test ($I^2 \geq 50\%$ were considered between-study heterogeneity) [14]. To identify potential sources of heterogeneity, we did subgroup analysis according to the predefined criteria as follows: age (≥ 65 vs. < 65), gender (male vs. female), hypertension (yes vs. no), diabetes (yes vs. no), COPD (yes vs. no) and CVDs (yes vs. no). In addition to the main analysis, we carried out sensitivity analysis to find if the overall estimate depended on the effect size from a single study. Assessing the publication bias was done by the formal test of Egger [15]. All statistical analyses were conducted using Stata, version 14.0 (Stata Corp, College Station, TX, USA). P-values were considered significant at level of < 0.05 .

Results

Search results

In our initial search, we found 143 papers. Of these, 15 duplicates, 17 non-English, 26 non-human, 46 reviews and 17 studies that did not fulfill our eligibility criteria were excluded, leaving 22 papers for further evaluation. Out of remaining 22 papers, 8 were excluded because of the following reason: did not report HRs, ORs or RRs with 95% CIs. Finally, we included 14 retrospective studies in the current systematic review and meta-analysis (Figure 1).

Study characteristics

Twelve studies were conducted in China [2,6,8-11,16-21], one in Italy [22] and one in Iran [23]. The sample size of studies varied from 172 to 20812 patients (mean age, 59.6 years). All studies used real-time reverse transcriptase–polymerase chain reaction (RT-PCR) to confirm COVID-19 infection [2,6,8-11,16-23]. The NOS scores ranged between 5 to 8.

Demographic characteristics and risk of death from COVID-19

In the meta-analysis of 6 effect sizes, obtained from 6 studies [6,9,10,16,17,22] (3,088 patients and 344 cases of death), we found that older age (≥ 65 vs < 65 years old) was associated with a 459% (over fourfold) increased risk of COVID-19 mortality (pooled ORs=4.59, 95% CIs=2.61-8.04, $p < 0.001$, $I^2 = 67.1\%$, $p_{\text{heterogeneity}} = 0.010$) (Figure 2). Combining 5 effect sizes from 5 studies [6,8-10,23] revealed significant association between male gender and COVID-19 mortality (pooled ORs=1.50, 95% CIs=1.06-2.12, $p = 0.021$, $I^2 = 76.3\%$, $p_{\text{heterogeneity}} = 0.002$) (Figure 2).

Comorbidities and risk of death from COVID-19

Totally, 38 effect sizes from 12 studies [2,6,8,10,11,16-22] with a total of 26,235 patients and 1,117 cases of death were extracted for the association between comorbidities and COVID-19 mortality. Combining the reported estimates, we found a significant positive association between hypertension (pooled ORs=2.70, 95% CIs=1.40-5.24, $p = 0.003$, $I^2 = 92.6\%$, $p_{\text{heterogeneity}} < 0.001$) (Figure 3), cardiovascular diseases (CVDs) (pooled ORs=3.72, 95% CIs=1.77-7.83, $p = 0.001$, $I^2 = 89.1\%$, $p_{\text{heterogeneity}} < 0.001$) (Figure 3), diabetes (pooled ORs=2.41, 95% CIs=1.05-5.51, $p = 0.037$, $I^2 = 93.6\%$, $p_{\text{heterogeneity}} < 0.001$) (Figure 4), chronic obstructive pulmonary disease (COPD) (pooled ORs=3.53, 95% CIs=1.79-6.96, $p < 0.001$, $I^2 = 72.2\%$, $p_{\text{heterogeneity}} = 0.001$) (Figure

4), cancer (pooled ORs=3.04, 95% CIs=1.80-5.14, $p<0.001$, $I^2=41.6\%$, $p_{\text{heterogeneity}}=0.114$) (Figure 4), and risk of death from COVID-19. We found that hypertension, CVDs, diabetes, COPD and cancer were associated with 270% (over twofold), 372% (over threefold), 241% (over twofold), 353% (over threefold) and 304% (over threefold) higher risk of COVID-19 mortality, respectively.

Sensitivity analysis and publication bias

Findings from sensitivity analysis showed that overall estimates on the association of demographic characteristics and comorbidities with COVID-19 mortality did not depend on a single study (Supplementary Figures 1, 2). Furthermore, based on the results of Egger's test (age: $p=0.185$, gender: $p=0.388$, hypertension: $P=0.065$, CVDs: $P=0.068$, diabetes: $P=0.117$, COPD: $P=0.178$, and cancer: $p=0.054$), we found no evidence of publication bias.

Discussion

Findings from the current systematic review and meta-analysis supported the hypothesis that older age (≥ 65 years old), male gender, hypertension, CVDs, diabetes, COPD and cancer were associated with higher risk of mortality from COVID-19 infection.

Our findings are partially in agreement with previous narrative review [24]. Previously, older age has been reported as an important risk factor for mortality in SARS and Middle East respiratory syndrome (MERS) [25,26]. The current meta-analysis confirmed that increased age (≥ 65 years old) was associated with death in COVID-19 patients. The age-dependent defects in B-cell and

T-cell function and the excess production of type 2 cytokines could lead to prolonged proinflammatory responses and deficiency in control of viral replication, potentially leading to poor outcome [27]. In addition, elderly patients may have other risk factors, such as sarcopenia and comorbidities [11].

Previous studies suggested that COVID-19 infection is more likely to affect older males with comorbidities, and can result in fatal respiratory diseases such as acute respiratory disease syndrome [10,28]. Interestingly, SARS and MERS also infected more males compared to females [29,30]. Differences in the levels and type of circulating sex hormones in males and females might influence the susceptibility of COVID-19 infection. Previous study showed that sex hormones modulate the responses of adaptive and innate immunity [31].

The other risk factors related to death include hypertension, CVDs, diabetes, respiratory system disease and malignancy. A previous study showed that hypertension and diabetes are more prevalent in patients with severe MERS infection [30]. Similarly, the mortality rate of influenza was significantly higher in patients with hypertension, metabolic disease, CVDs and respiratory system disease [32]. Previous studies reported that high protein expression of angiotensin converting enzyme 2 (ACE2) receptor, the receptor for COVID-19, in specific organs correlated with organ failures in SARS patients [33-36]. It has been shown that circulating ACE2 levels are higher in male patients with hypertension, diabetes and CVDs [37,38]. Therefore, male patients with these comorbidities may be more prone to die from COVID-19 infection because of the high expression of ACE2 receptor, though further research on the mechanism is needed.

The pathogenesis of COVID-19 is still not completely understood. Cytokine storm is thought to play an important role in disease severity [39]. Neutrophilia was found in both the lung and peripheral blood of patients with SARS [40,41]. The severity of lung damage correlated with

higher numbers of neutrophils and macrophages in the peripheral blood and extensive pulmonary infiltration of these cells in patients with MERS [42-44]. Neutrophils are the main source of cytokines and chemokines. The generation of cytokine storm can lead to acute respiratory distress syndrome, which is a leading cause of death in patients with SARS and MERS [44,45]. This may explain the positive association between high fever and acute respiratory distress syndrome found at the early stages of COVID-19 infection [6].

The present study has some limitations. First, interpretation of our meta-analysis findings might be limited by the small sample size. However, by including studies conducted in different designated hospitals for COVID-19, we believe our findings are representative of cases in Wuhan, China. Second, our meta-analysis did not include data such as smoking history and body mass index, which are potential risk factors for disease severity and mortality.

Conclusion

Older age (≥ 65 years old), male gender, hypertension, CVDs, diabetes, COPD and cancer were associated with greater risk of death from COVID-19 infection. The results of the present meta-analysis could help clinicians to identify high risk groups that should receive off-label medications or invasive supportive care, as soon as possible.

Author contributions: MP, SY and MD had the idea for the article, MP, AS, MHJ, PS performed the literature search and data analysis, and MP, SY and MD drafted and critically revised the work.

Funding: This research did not receive any specific grant from funding agencies in the public, commercial, or not-for-profit sectors.

Compliance with ethical standards

Conflict of interest: The authors declare that they have no conflict interests.

Ethical approval: Not applicable.

Informed consent: Not applicable.

Availability of data and materials: All data generated or analyzed during this study are included in this manuscript.

References:

1. Phelan AL, Katz R, Gostin LO. The novel coronavirus originating in Wuhan, China: challenges for global health governance. *JAMA*. 2020;323(8):709-710.
2. Zhou F, Yu T, Du R, et al. Clinical course and risk factors for mortality of adult inpatients with COVID-19 in Wuhan, China: a retrospective cohort study. *Lancet*. 2020 Mar 11.
3. World Health Organization. Coronavirus disease 2019 (COVID-19): situation report-119. May 18, 2020.
4. Zhu N, Zhang D, Wang W, et al. A Novel Coronavirus from Patients with Pneumonia in China, 2019. *N Engl J Med*. 2020 Feb 20;382(8):727-733.
5. Huang C, Wang Y, Li X, et al. Clinical features of patients infected with 2019 novel coronavirus in Wuhan, China. *Lancet*. 2020 Feb 15;395(10223):497-506.
6. Wu C, Chen X, Cai Y, et al. Risk Factors Associated With Acute Respiratory Distress Syndrome and Death in Patients With Coronavirus Disease 2019 Pneumonia in Wuhan, China. *JAMA Intern Med*. 2020 Mar 13.
7. Chen N, Zhou M, Dong X, et al. Epidemiological and clinical characteristics of 99 cases of 2019 novel coronavirus pneumonia in Wuhan, China: a descriptive study. *Lancet*. 2020 Feb 15;395(10223):507-513.
8. Caramelo F, Ferreira N, Oliveiros B. Estimation of risk factors for COVID-19 mortality-preliminary results. *medRxiv*. 2020.
9. Cheng Y, Luo R, Wang K, et al. Kidney impairment is associated with in-hospital death of COVID-19 patients. *medRxiv*. 2020.
10. Su VYF, Yang Y-H, Yang K-Y, et al. The Risk of Death in 2019 Novel Coronavirus Disease (COVID-19) in Hubei Province. Available at SSRN 3539655. 2020.
11. Wang K, Zuo P, Liu Y, et al. Clinical and Laboratory Predictors of In-Hospital Mortality in 305 Patients with COVID-19: A Cohort Study in Wuhan, China. *China* (2/24/2020). 2020.
12. Moher D, Liberati A, Tetzlaff J, et al. Preferred reporting items for systematic reviews and meta-analyses: the PRISMA statement. *Ann Intern Med*. 2009;151(4):264-269.
13. Stang A. Critical evaluation of the Newcastle-Ottawa scale for the assessment of the quality of nonrandomized studies in meta-analyses. *Eur J Epidemiol*. 2010 Sep;25(9):603-5.
14. Higgins J, Wells G. *Cochrane handbook for systematic reviews of interventions*. 2011.
15. Egger M, Smith GD, Schneider M, et al. Bias in meta-analysis detected by a simple, graphical test. *BMJ*. 1997;315(7109):629-634.
16. Chen R, Liang W, Jiang M, et al. Risk Factors of Fatal Outcome in Hospitalized Subjects With Coronavirus Disease 2019 From a Nationwide Analysis in China. *Chest*. 2020 Apr 15.
17. Du RH, Liang LR, Yang CQ, et al. Predictors of Mortality for Patients with COVID-19 Pneumonia Caused by SARS-CoV-2: A Prospective Cohort Study. *Eur Respir J*. 2020 Apr 8.
18. Guan WJ, Liang WH, Zhao Y, et al. Comorbidity and its impact on 1590 patients with Covid-19 in China: A Nationwide Analysis. *Eur Respir J*. 2020 Mar 26.

19. Liu Y, Du X, Chen J, et al. Neutrophil-to-lymphocyte ratio as an independent risk factor for mortality in hospitalized patients with COVID-19. *J Infect*. 2020 Apr 10.
20. Shi S, Qin M, Shen B, et al. Association of Cardiac Injury With Mortality in Hospitalized Patients With COVID-19 in Wuhan, China. *JAMA Cardiol*. 2020 Mar 25.
21. Wang L, He W, Yu X, et al. Coronavirus disease 2019 in elderly patients: Characteristics and prognostic factors based on 4-week follow-up. *J Infect*. 2020 Mar 30.
22. Colombi D, Bodini FC, Petrini M, et al. Well-aerated Lung on Admitting Chest CT to Predict Adverse Outcome in COVID-19 Pneumonia. *Radiology*. 2020 Apr 17:201433.
23. Nikpouraghdam M, Jalali Farahani A, Alishiri G, et al. Epidemiological characteristics of coronavirus disease 2019 (COVID-19) patients in IRAN: A single center study. *J Clin Virol*. 2020 Apr 21;127:104378.
24. Leung C. Clinical features of deaths in the novel coronavirus epidemic in China. *Rev Med Virol*. 2020 Mar 16:e2103.
25. Choi KW, Chau TN, Tsang O, et al. Outcomes and prognostic factors in 267 patients with severe acute respiratory syndrome in Hong Kong. *Ann Intern Med*. 2003 Nov 4;139(9):715-23.
26. Hong KH, Choi JP, Hong SH, et al. Predictors of mortality in Middle East respiratory syndrome (MERS). *Thorax*. 2018 Mar;73(3):286-289.
27. Opal SM, Girard TD, Ely EW. The immunopathogenesis of sepsis in elderly patients. *Clin Infect Dis*. 2005 Nov 15;41 Suppl 7:S504-12.
28. Zhang JJ, Dong X, Cao YY, et al. Clinical characteristics of 140 patients infected with SARS-CoV-2 in Wuhan, China. *Allergy*. 2020 Feb 19.
29. Channappanavar R, Fett C, Mack M, et al. Sex-Based Differences in Susceptibility to Severe Acute Respiratory Syndrome Coronavirus Infection. *J Immunol*. 2017 May 15;198(10):4046-4053.
30. Badawi A, Ryoo SG. Prevalence of comorbidities in the Middle East respiratory syndrome coronavirus (MERS-CoV): a systematic review and meta-analysis. *Int J Infect Dis*. 2016 Aug;49:129-33.
31. Jaillon S, Berthenet K, Garlanda C. Sexual Dimorphism in Innate Immunity. *Clin Rev Allergy Immunol*. 2019 Jun;56(3):308-321.
32. Mertz D, Kim TH, Johnstone J, et al. Populations at risk for severe or complicated influenza illness: systematic review and meta-analysis. *BMJ*. 2013 Aug 23;347:f5061.
33. Hoffmann M, Kleine-Weber H, Krüger N, et al. The novel coronavirus 2019 (2019-nCoV) uses the SARS-coronavirus receptor ACE2 and the cellular protease TMPRSS2 for entry into target cells. *BioRxiv*. 2020.
34. Yang JK, Feng Y, Yuan MY, et al. Plasma glucose levels and diabetes are independent predictors for mortality and morbidity in patients with SARS. *Diabet Med*. 2006 Jun;23(6):623-8.
35. Yang JK, Lin SS, Ji XJ, et al. Binding of SARS coronavirus to its receptor damages islets and causes acute diabetes. *Acta Diabetol*. 2010 Sep;47(3):193-9.
36. Li R, Qiao S, Zhang G. Analysis of angiotensin-converting enzyme 2 (ACE2) from different species sheds some light on cross-species receptor usage of a novel coronavirus 2019-nCoV. *J Infect*. 2020 Apr;80(4):469-496.
37. Patel SK, Velkoska E, Freeman M, et al. From gene to protein-experimental and clinical studies of ACE2 in blood pressure control and arterial hypertension. *Front Physiol*. 2014;5:227.
38. Patel SK, Velkoska E, Burrell LM. Emerging markers in cardiovascular disease: where does angiotensin-converting enzyme 2 fit in? *Clin Exp Pharmacol Physiol*. 2013 Aug;40(8):551-9.
39. Channappanavar R, Perlman S. Pathogenic human coronavirus infections: causes and consequences of cytokine storm and immunopathology. *Semin Immunopathol*. 2017 Jul;39(5):529-539.

40. Nicholls JM, Poon LL, Lee KC, et al. Lung pathology of fatal severe acute respiratory syndrome. *Lancet*. 2003 May 24;361(9371):1773-8.
41. Wang YH, Lin AS, Chao TY, et al. A cluster of patients with severe acute respiratory syndrome in a chest ward in southern Taiwan. *Intensive Care Med*. 2004 Jun;30(6):1228-31.
42. Ng DL, Al Hosani F, Keating MK, et al. Clinicopathologic, Immunohistochemical, and Ultrastructural Findings of a Fatal Case of Middle East Respiratory Syndrome Coronavirus Infection in the United Arab Emirates, April 2014. *Am J Pathol*. 2016 Mar;186(3):652-8.
43. Min CK, Cheon S, Ha NY, et al. Comparative and kinetic analysis of viral shedding and immunological responses in MERS patients representing a broad spectrum of disease severity. *Sci Rep*. 2016 May 5;6:25359.
44. Kim ES, Choe PG, Park WB, et al. Clinical Progression and Cytokine Profiles of Middle East Respiratory Syndrome Coronavirus Infection. *J Korean Med Sci*. 2016 Nov;31(11):1717-1725.
45. Lew TW, Kwek TK, Tai D, et al. Acute respiratory distress syndrome in critically ill patients with severe acute respiratory syndrome. *JAMA*. 2003 Jul 16;290(3):374-80.

Table and Figure legends:

Table 1. Characteristics of studies included in the meta-analysis.

Figure 1. Flow chart of study selection.

Figure 2. Forest plot for the association between age, gender and risk of mortality from COVID-19 using random-effects model.

Figure 3. Forest plot for the association between hypertension, cardiovascular diseases and risk of mortality from COVID-19 using random-effects model.

Figure 4. Forest plot for the association between diabetes, chronic obstructive pulmonary disease, cancer and risk of mortality from COVID-19 using random-effects model.

Table 1.

Authors (year)	Design of study	Country	Mean age (y)	Sample size	Gender	Death cases	COVID-19 ^a detection	Demographic and clinical characteristics	HR, OR or RR (95%CI) ^b	Adjustment
Caramelo F et al. (2020)	Retrospective	China	-	20812	F/M	504	real-time RT-PCR	Gender (male vs female) Hypertension (yes vs no) CVDs (yes vs no) Diabetes (yes vs no) COPD (yes vs no) Cancer (yes vs no)	OR: 1.85 (1.60-2.13) OR: 7.42 (6.33-8.79) OR: 12.83 (10.27-15.86) OR: 9.03 (7.39-11.35) OR: 7.79 (5.54-10.43) OR: 6.88 (3.35-12.45)	Age, gender and comorbidities
Chen R et al. (2020)	Retrospective	China	69	1590	F/M	50	real-time RT-PCR	Age (≥65 vs <65 years) CVDs (yes vs no)	HR: 3.43 (1.24-9.5) HR: 4.28 (1.14-16.13)	-
Cheng Y et al. (2020)	Retrospective	China	63	710	F/M	89	real-time RT-PCR	Age (≥65 vs <65 years) Gender (male vs female)	HR: 2.51 (1.64-3.86) HR: 2.44 (1.53-3.87)	Age, gender, disease severity, leukocyte count and lymphocyte count
Colombi D et al. (2020)	Retrospective	Italy	68	236	F/M	108	real-time RT-PCR	Age (≥65 vs <65 years) CVDs (yes vs no) Cancer (yes vs no)	OR: 3.40 (1.70-6.60) OR: 3.70 (1.90-7.30) OR: 3.50 (1.60-7.70)	Demographic and clinical parameters
Du RH et al. (2020)	Prospective	China	57.6	179	F/M	21	real-time RT-PCR	Age (≥65 vs <65 years) CVDs (yes vs no)	OR: 3.76 (1.15-17.39) OR: 2.46 (0.75-8.04)	Age, gender and comorbidities
Guan Wj et al. (2020)	Retrospective	China	48.9	1590	F/M	131	real-time RT-PCR	Hypertension (yes vs no) Diabetes (yes vs no) COPD (yes vs no) Cancer (yes vs no)	HR: 1.57 (1.07-2.32) HR: 1.59 (1.03-2.45) HR: 2.68 (1.42-5.05) HR: 3.50 (1.60-7.64)	Age and smoking status
Liu Y et al. (2020)	Retrospective	China	53.9	245	F/M	33	real-time RT-PCR	Hypertension (yes vs no) CVDs (yes vs no) Diabetes (yes vs no) COPD (yes vs no) Cancer (yes vs no)	OR: 3.94 (1.82-8.53) OR: 6.46 (2.33-17.9) OR: 3.20 (1.24-8.77) OR: 4.14 (0.94-18.22) OR: 1.89 (0.38-9.51)	Age, gender, body mass index, smoking status, comorbidities and laboratory findings
Nikpouraghdam M et al. (2020)	Retrospective	Iran	55.5	2964	F/M	239	real-time RT-PCR	Gender (male vs female)	OR: 1.45 (1.08-1.96)	-
Shi S et al. (2020)	Retrospective	China	64	416	F/M	57	real-time RT-PCR	CVDs (yes vs no) COPD (yes vs no) Cancer (yes vs no)	HR: 1.51 (0.70-3.30) HR: 0.37 (0.04-3.50) HR: 1.75 (0.43-7.16)	Age, comorbidities and laboratory findings
Su VY et al. (2020)	Retrospective	China	71.6	172	F/M	32	real-time RT-PCR	Age (≥65 vs <65 years) Gender (male vs female) Hypertension (yes vs no) CVDs (yes vs no) Diabetes (yes vs no) COPD (yes vs no) Cancer (yes vs no)	OR: 26.00 (7.50-89.8) OR: 1.53 (0.75-3.13) OR: 3.50 (1.10-10.80) OR: 5.10 (1.70-15.60) OR: 1.90 (0.60-5.50) OR: 7.40 (0.80-67.00) OR: 2.70 (0.20-30.80)	-
Wang K et al. (2020)	Retrospective	China	47.8	264	F/M	18	real-time RT-PCR	Hypertension (yes vs no)	OR: 2.24 (0.57-8.72)	-
Wang L et al. (2020)	Retrospective	China	69	339	F/M	65	real-time RT-PCR	Hypertension (yes vs no) CVDs (yes vs no) Diabetes (yes vs no)	HR: 1.49 (0.91-2.44) HR: 1.86 (1.06-3.26) HR: 1.09 (0.57-2.08)	Age

								COPD (yes vs no)	HR: 2.24 (1.11-4.50)	
								Cancer (yes vs no)	HR: 0.98 (0.31-3.13)	
Wu C et al. (2020)	Retrospective	China	51	201	F/M	44	real-time RT-PCR	Age (≥ 65 vs < 65 years)	HR: 6.17 (3.26-11.67)	-
								Gender (male vs female)	HR: 0.56 (0.30-1.05)	
								Hypertension (yes vs no)	HR: 1.70 (0.92-3.14)	
								Diabetes (yes vs no)	HR: 1.58 (0.80-3.13)	
Zhou F et al. (2020)	Retrospective	China	56	191	F/M	54	real-time RT-PCR	Hypertension (yes vs no)	OR: 3.05 (1.57-5.92)	Study center
								CVDs (yes vs no)	OR: 2.14 (0.26-17.79)	
								Diabetes (yes vs no)	OR: 2.85 (1.35-6.05)	
								COPD (yes vs no)	OR: 5.40 (0.96-30.40)	

Abbreviations: ^aCOVID-19: Coronavirus diseases 2019, ^bHR: Hazard ratio, OR: Odds ratio, RR: Relative risk.

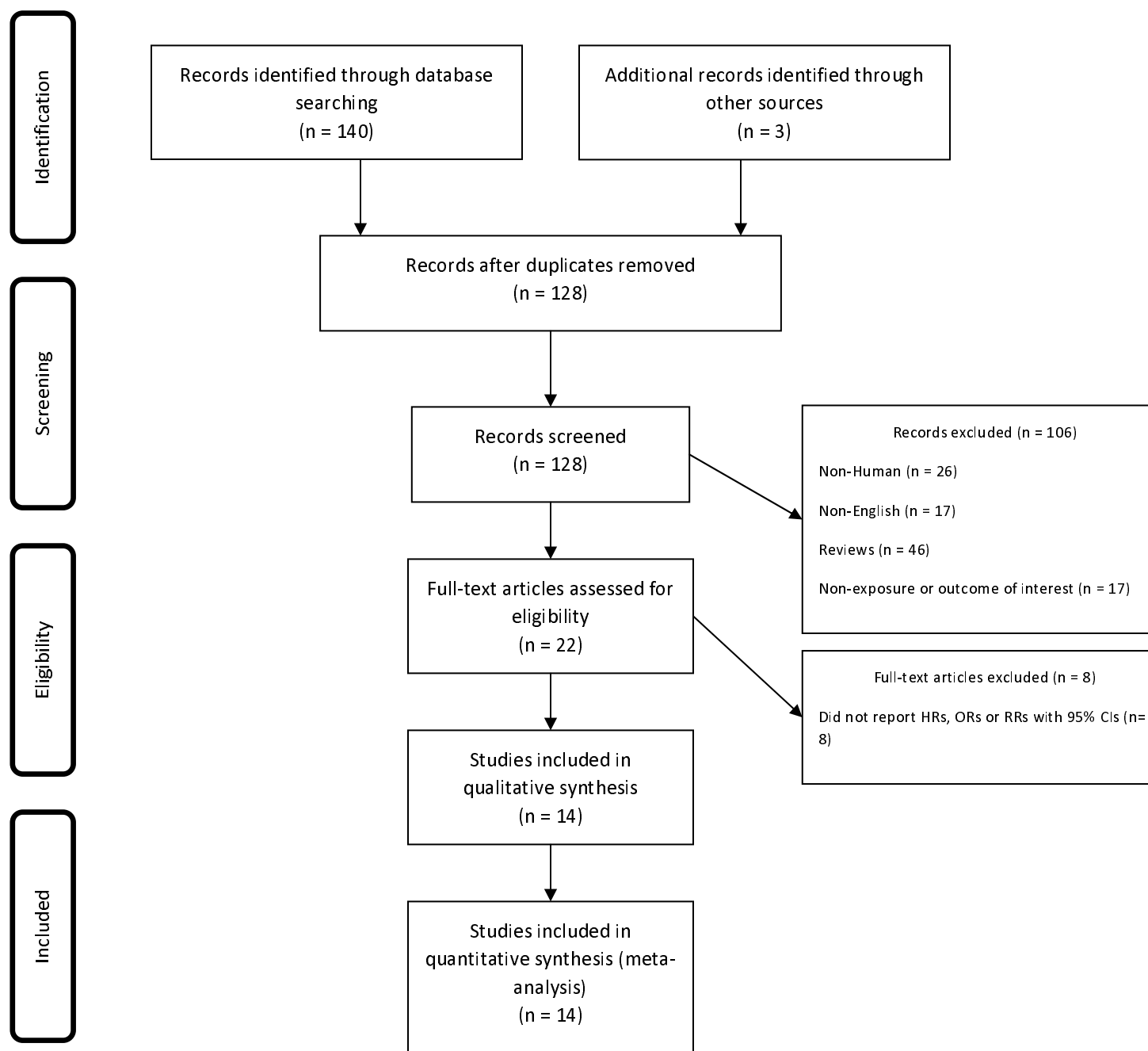


Fig. 1

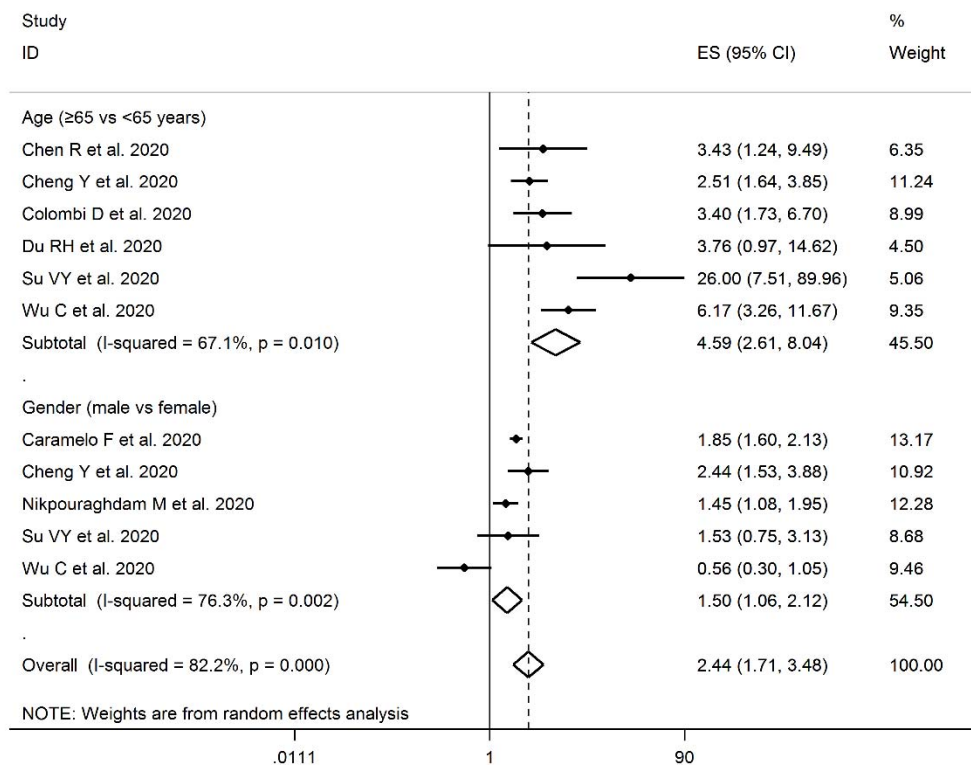


Fig. 2

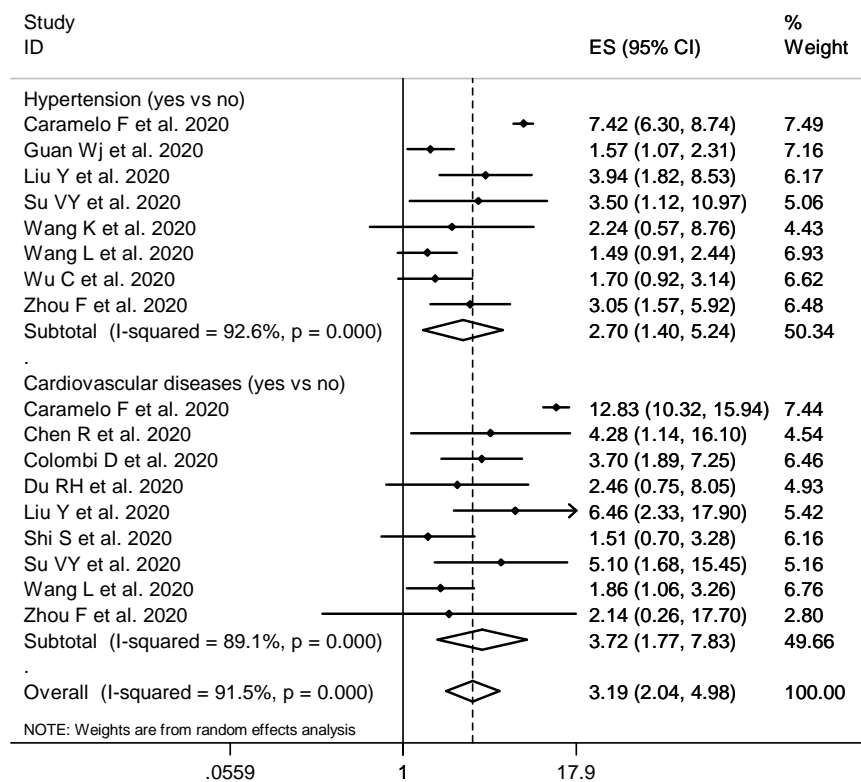


Fig. 3

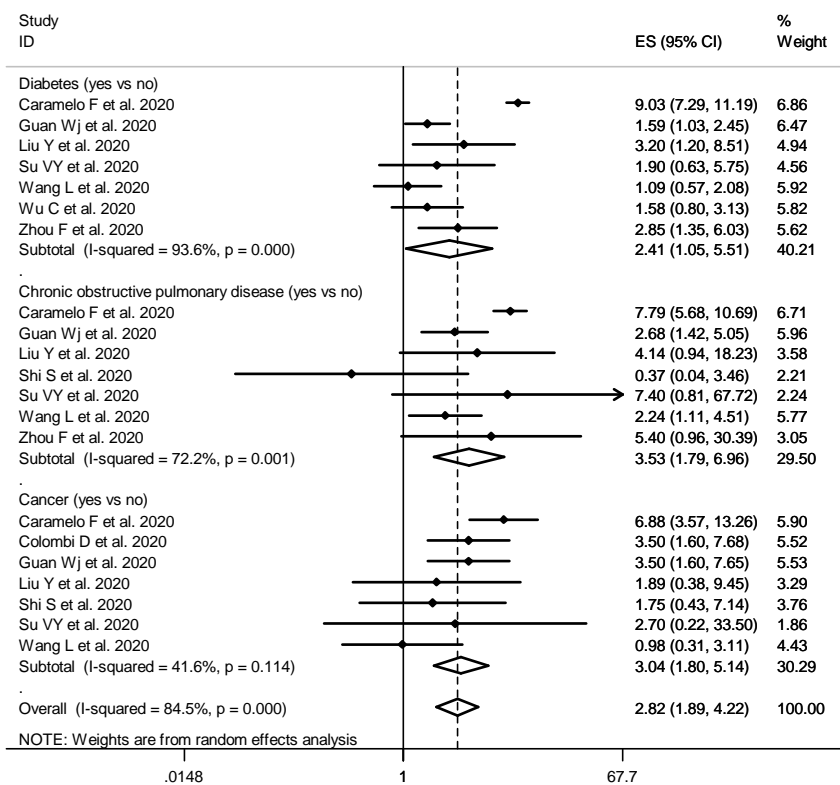
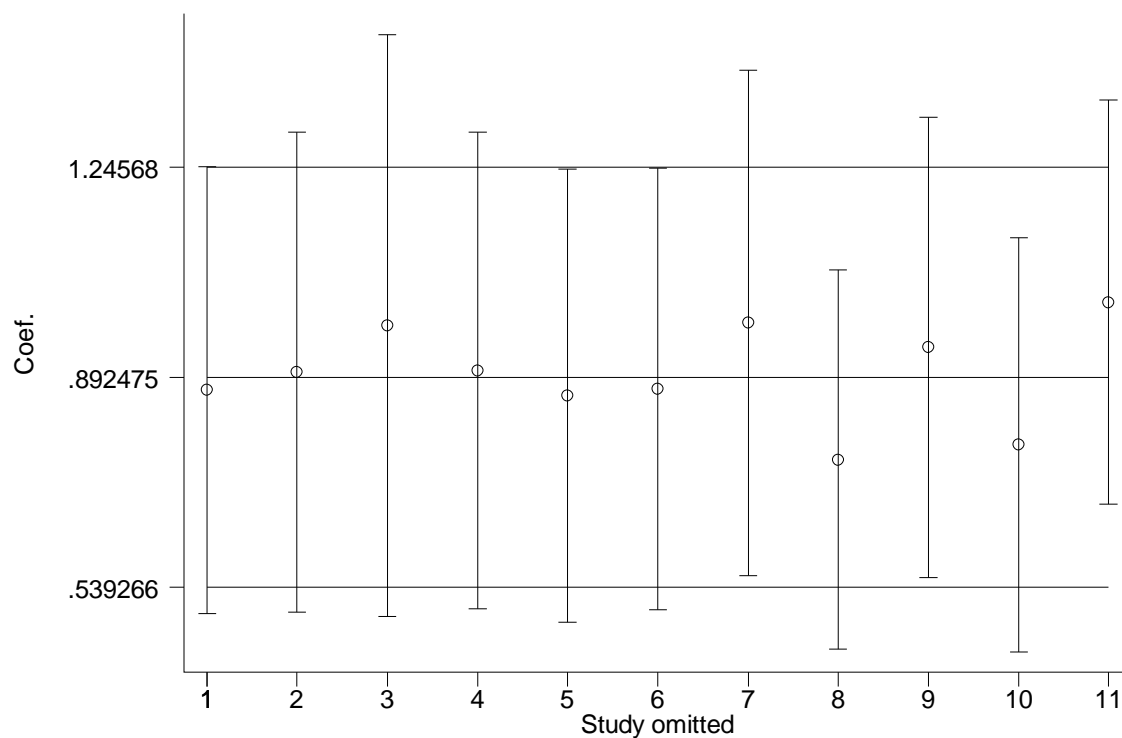


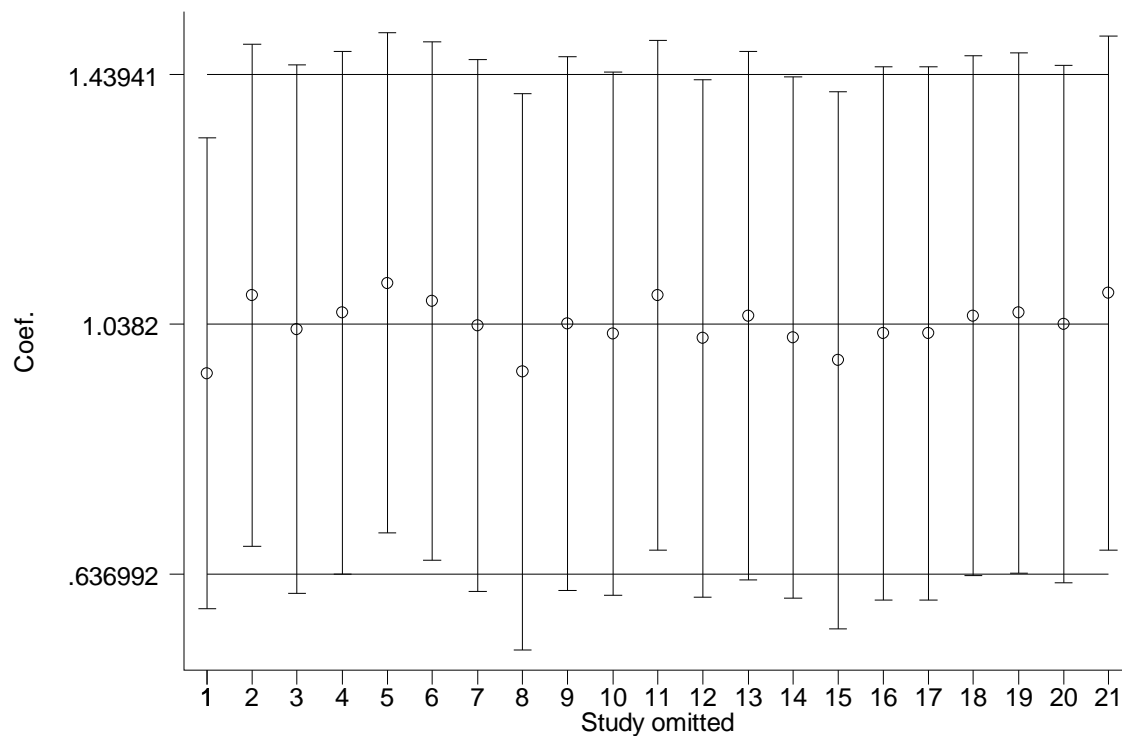
Fig. 4

Supplementary table 1. Systematic literature review search terms and strategy.

Search terms for PubMed
#1 (“COVID-19”[Mesh] OR “COVID-19”[Title/Abstract] OR “severe acute respiratory syndrome coronavirus 2”[Mesh] OR “severe acute respiratory syndrome coronavirus 2”[Title/Abstract] OR “SARS-CoV-2”[Title/Abstract] OR “novel coronavirus” [Title/Abstract] OR “2019-nCoV”[Title/Abstract])
#2 (“Death”[Mesh] OR “Death”[Title/Abstract] OR “Mortality”[Mesh] OR “Mortality”[Title/Abstract] OR “Survival”[Mesh] OR “Survival”[Title/Abstract] OR “Fatal Outcome”[Mesh] OR “Fatal Outcome”[Title/Abstract])
#1 AND #2
Search terms for Scopus
#1 (“COVID-19” OR “severe acute respiratory syndrome coronavirus 2” OR “SARS-CoV-2” OR “novel coronavirus” OR “2019-nCoV”): Title/Abstract/Keyword
#2 (“death” OR “mortality” OR “survival” OR “fatal outcome”): Title/Abstract/Keyword
#1 AND #2
Search terms for Web of Science
#1. TS = (“COVID-19” OR “severe acute respiratory syndrome coronavirus 2” OR “SARS-CoV-2” OR “novel coronavirus” OR “2019-nCoV”)
#2. TS = (“death” OR “mortality” OR “survival” OR “fatal outcome”)
#3. #1 AND #2
Search terms for Cochrane Library
#1 (“COVID-19” OR “severe acute respiratory syndrome coronavirus 2” OR “SARS-CoV-2” OR “novel coronavirus” OR “2019-nCoV”): Title/Abstract/Keyword
#2 (“death” OR “mortality” OR “survival” OR “fatal outcome”): Title/Abstract/Keyword
#1 AND #2



Supplementary Figure 1. Sensitivity analysis graph for the association between demographic characteristics and risk of death from COVID-19 infection. The results of the sensitivity analysis showed that no study had an obvious influence on the outcomes of this meta-analysis.



Supplementary Figure 2. Sensitivity analysis graph for the association between comorbidities and risk of death from COVID-19 infection. The results of the sensitivity analysis showed that no study had an obvious influence on the outcomes of this meta-analysis.



PRISMA 2009 Checklist

Section/topic	#	Checklist item	Reported on page #
TITLE			
Title	1	Identify the report as a systematic review, meta-analysis, or both.	1
ABSTRACT			
Structured summary	2	Provide a structured summary including, as applicable: background; objectives; data sources; study eligibility criteria, participants, and interventions; study appraisal and synthesis methods; results; limitations; conclusions and implications of key findings; systematic review registration number.	2
INTRODUCTION			
Rationale	3	Describe the rationale for the review in the context of what is already known.	4
Objectives	4	Provide an explicit statement of questions being addressed with reference to participants, interventions, comparisons, outcomes, and study design (PICOS).	4
METHODS			
Protocol and registration	5	Indicate if a review protocol exists, if and where it can be accessed (e.g., Web address), and, if available, provide registration information including registration number.	5
Eligibility criteria	6	Specify study characteristics (e.g., PICOS, length of follow-up) and report characteristics (e.g., years considered, language, publication status) used as criteria for eligibility, giving rationale.	5
Information sources	7	Describe all information sources (e.g., databases with dates of coverage, contact with study authors to identify additional studies) in the search and date last searched.	5
Search	8	Present full electronic search strategy for at least one database, including any limits used, such that it could be repeated.	5
Study selection	9	State the process for selecting studies (i.e., screening, eligibility, included in systematic review, and, if applicable, included in the meta-analysis).	5
Data collection process	10	Describe method of data extraction from reports (e.g., piloted forms, independently, in duplicate) and any processes for obtaining and confirming data from investigators.	6
Data items	11	List and define all variables for which data were sought (e.g., PICOS, funding sources) and any assumptions and simplifications made.	6
Risk of bias in individual studies	12	Describe methods used for assessing risk of bias of individual studies (including specification of whether this was done at the study or outcome level), and how this information is to be used in any data synthesis.	6
Summary measures	13	State the principal summary measures (e.g., risk ratio, difference in means).	6,7
Synthesis of results	14	Describe the methods of handling data and combining results of studies, if done, including measures of consistency (e.g., I^2) for each meta-analysis.	6,7



PRISMA 2009 Checklist

Section/topic	#	Checklist item	Reported on page #
Risk of bias across studies	15	Specify any assessment of risk of bias that may affect the cumulative evidence (e.g., publication bias, selective reporting within studies).	7
Additional analyses	16	Describe methods of additional analyses (e.g., sensitivity or subgroup analyses, meta-regression), if done, indicating which were pre-specified.	7
RESULTS			
Study selection	17	Give numbers of studies screened, assessed for eligibility, and included in the review, with reasons for exclusions at each stage, ideally with a flow diagram.	7
Study characteristics	18	For each study, present characteristics for which data were extracted (e.g., study size, PICOS, follow-up period) and provide the citations.	7
Risk of bias within studies	19	Present data on risk of bias of each study and, if available, any outcome level assessment (see item 12).	7
Results of individual studies	20	For all outcomes considered (benefits or harms), present, for each study: (a) simple summary data for each intervention group (b) effect estimates and confidence intervals, ideally with a forest plot.	8,9
Synthesis of results	21	Present results of each meta-analysis done, including confidence intervals and measures of consistency.	8,9
Risk of bias across studies	22	Present results of any assessment of risk of bias across studies (see Item 15).	9
Additional analysis	23	Give results of additional analyses, if done (e.g., sensitivity or subgroup analyses, meta-regression [see Item 16]).	9
DISCUSSION			
Summary of evidence	24	Summarize the main findings including the strength of evidence for each main outcome; consider their relevance to key groups (e.g., healthcare providers, users, and policy makers).	9-11
Limitations	25	Discuss limitations at study and outcome level (e.g., risk of bias), and at review-level (e.g., incomplete retrieval of identified research, reporting bias).	11
Conclusions	26	Provide a general interpretation of the results in the context of other evidence, and implications for future research.	11
FUNDING			
Funding	27	Describe sources of funding for the systematic review and other support (e.g., supply of data); role of funders for the systematic review.	11

From: Moher D, Liberati A, Tetzlaff J, Altman DG, The PRISMA Group (2009). Preferred Reporting Items for Systematic Reviews and Meta-Analyses: The PRISMA Statement. PLoS Med 6(7): e1000097. doi:10.1371/journal.pmed1000097

For more information, visit: www.prisma-statement.org.

medRxiv preprint doi: <https://doi.org/10.1101/2020.04.09.20056291>; this version posted June 4, 2020. The copyright holder for this preprint (which was not certified by peer review) is the author/funder, who has granted medRxiv a license to display the preprint in perpetuity. It is made available under a CC-BY 4.0 International license.



PRISMA 2009 Checklist

Page 2 of 2