

1 **Risk factors for mortality of adult inpatients with Coronavirus disease 2019 (COVID-19): a**  
2 **systematic review and meta-analysis of retrospective studies**

3

4 Mohammad Parohan<sup>a\*</sup>, PhD, Sajad Yaghoubi<sup>b\*</sup>, PhD, Asal Seraj<sup>c</sup>, PhD, Mohammad Hassan  
5 Javanbakht<sup>a</sup>, PhD, Payam Sarraf<sup>d</sup>, MD, Mahmoud Djalali<sup>a\*</sup>, PhD

6

7 <sup>a</sup>Department of Cellular and Molecular Nutrition, School of Nutritional Sciences and Dietetics,  
8 Tehran University of Medical Sciences, Tehran, Iran.

9 <sup>b</sup>Department of Clinical Microbiology, Iranshahr University of Medical Sciences, Iranshahr,  
10 Iran.

11 <sup>c</sup>Department of Nursing, Damavand Branch, Islamic Azad University, Damavand, Iran.

12 <sup>d</sup>Iranian center of Neurological research, Neuroscience Institute, Tehran University of Medical  
13 Sciences, Tehran, Iran.

14

15 \*Corresponding author:

16 Mohammad Parohan

17 Postal address: Tehran University of Medical Sciences, School of Nutritional Sciences and  
18 Dietetics ,44 Hojat Dost St, Naderi St, Enghelab Ave, Tehran, Iran. E-mail address:

19 [prohan.m742@gmail.com](mailto:prohan.m742@gmail.com), [prohan-m@razi.tums.ac.ir](mailto:prohan-m@razi.tums.ac.ir)

20

21 \*Additional corresponding authors

22 Mahmoud Djalali, Email address: [mjalali87@yahoo.com](mailto:mjalali87@yahoo.com)

23 Sajad Yaghoubi, Email address: [sajadyaghoubi98@gmail.com](mailto:sajadyaghoubi98@gmail.com)

24 *Abstract*

25 Background: Coronavirus disease 2019 (COVID-19) is an emerging disease that was first reported  
26 in Wuhan city, the capital of Hubei province in China, and has subsequently spread worldwide.

27 Risk factors for mortality have not been well summarized. Current meta-analysis of retrospective  
28 cohort studies was done to summarize available findings on the association between age, gender,  
29 comorbidities and risk of death from COVID-19 infection.

30 Methods: Online databases including Web of Science, PubMed, Scopus and Google scholar were  
31 searched to detect relevant publications up to 22 March 2020, using relevant keywords. To pool  
32 data, random-effects model was used. Furthermore, sensitivity analysis and publication bias test  
33 were also done.

34 Results: In total, six retrospective studies with 22,350 COVID-19 infected patients and 741 cases  
35 of death were included in the current meta-analysis. A significant positive association was found  
36 between older age ( $\geq 65$  years old) and COVID-19 mortality (combined effect size=2.39 (over  
37 twofold), 95% CIs=1.75-3.28,  $p < 0.001$ ). Such finding was also seen for hypertension (combined  
38 effect size=3.29 (over threefold), 95% CIs=1.54-7.05,  $p = 0.002$ ), diabetes (combined effect  
39 size=3.11 (over threefold), 95% CIs=1.10-8.80,  $p = 0.032$ ), chronic obstructive pulmonary disease  
40 (COPD) (combined effect size=7.69 (over sevenfold), 95% CIs=5.65-10.47,  $p < 0.001$ ) and  
41 cardiovascular diseases (CVDs) (combined effect size=7.39 (over sevenfold), 95% CIs=2.88-  
42 18.96,  $p < 0.001$ ).

43 Conclusions: Older age, hypertension, diabetes, COPD and CVDs were associated with greater  
44 risk of death from COVID-19 infection. These findings could help clinicians to identify patients  
45 with poor prognosis at an early stage.

46 Keywords: COVID-19; novel coronavirus; SARS-CoV-2; Mortality; Meta-analysis.

47

48 *Introduction*

49 In December, 2019, severe acute respiratory syndrome coronavirus 2 (SARS-CoV-2; previously  
50 known as 2019-nCoV) was first reported in Wuhan city, the capital of Hubei province in China,  
51 and has subsequently spread to other regions of China and 199 countries and territories (1-3).  
52 SARS-CoV-2, which belongs to a unique clade of the sarbecovirus subgenus of the  
53 Orthocoronavirinae subfamily (4), was later designated coronavirus disease 2019 (COVID-19) in  
54 February, 2020, by World Health Organization.

55 Patients with COVID-19 present primarily with fever, dry cough and fatigue or myalgia (5).  
56 Although most patients with COVID-19 are thought to have a favorable prognosis, older patients  
57 and those with chronic diseases may have worse outcomes (6). Patients with chronic underlying  
58 conditions may develop viral pneumonia, dyspnea and hypoxemia within 1 week after onset of the  
59 disease, which may progress to respiratory or end-organ failure and even death (7).

60 Several studies have reported the clinical characteristics and risk factors associated with death in  
61 patients with COVID-19 pneumonia (2, 6, 8-11). We are aware of no systematic review and meta-  
62 analysis that summarized available findings in this regard. Thus, we aimed to systematically  
63 review the present evidences on the association between age, gender, hypertension, diabetes,  
64 chronic obstructive pulmonary disease (COPD), cardiovascular diseases (CVDs) and risk of death  
65 from COVID-19 infection, and to summarize the available findings in a meta-analysis.

66

67 *Materials and methods*

68 *Study protocol*

69 The present systematic review and meta-analysis were planned, conducted and reported in  
70 adherence to the Preferred Reporting Items for Systematic Reviews and Meta-Analyses (PRISMA)  
71 guidelines (12).

72

73 *Search strategy*

74 We performed a literature search using the online databases of ISI Web of Science, PubMed,  
75 Scopus and Google scholar for relevant publications up to 22 March 2020. The following medical  
76 subject headings (MeSH) and non-MeSH keywords were used in our search strategy: (“novel  
77 coronavirus” OR “SARS-CoV-2” OR “COVID-19”) AND (“death” OR “mortality” OR “survival”  
78 OR “fatal outcome”). Literature search was done by two independent researchers (MP and SY).  
79 We also searched the reference lists of the relevant articles to identify missed studies. No restriction  
80 was applied on language and time of publication. To facilitate the screening process of articles  
81 from databases, all literature searches were downloaded into an EndNote library (version X8,  
82 Thomson Reuters, Philadelphia, USA).

83

84 *Eligibility Criteria*

85 In our meta-analysis, eligible articles were included if they met the following inclusion criteria:  
86 (1) all studies assessing the association between age, gender, comorbidities and mortality risk from  
87 COVID-19 infection as the major outcomes of interest; (2) observational studies with retrospective

88 design; (3) those that reported hazard ratios (HRs), odds ratios (ORs) or relative risks (RRs) along  
89 with 95% confidence intervals (CIs) for the relationship between risk factors and COVID-19  
90 mortality. Review articles, expert opinion articles, theses and books were excluded.

91

#### 92 *Data extraction and assessment for study quality*

93 Two investigators (MP and AS) extracted the following data from the included studies: study  
94 design, the first author's name, the publication year, age and gender of patients, sample size,  
95 exposure (risk factors), outcome (the risk of mortality), exposure and outcome assessment  
96 methods, most adjusted risk estimate (HRs, ORs, RRs) with 95% confidence intervals and adjusted  
97 confounding variables.

98 The Newcastle–Ottawa Scale (NOS) was used for assessing the quality of included retrospective  
99 cohort studies based on the following three major components: selection of the study patients,  
100 adjustment for potential confounding variables and assessment of outcome (13). Based on this  
101 scale, a maximum of nine points can be awarded to each study. In the present study, articles with  
102 the NOS score of  $\geq 5$  were considered as high quality publications.

103

#### 104 *Statistical analysis*

105 We used HRs, ORs, and RRs (and their 95% confidence intervals) reported for the association  
106 between risk factors and mortality from COVID-19 infection, to calculate log RRs and their  
107 standard errors (SEs). Then, the overall effect size for mortality in relation to risk factors was  
108 calculated using random-effects model. For examining the between-study heterogeneity, we

109 performed the Cochran's Q test ( $I^2 \geq 50\%$  were considered between-study heterogeneity) (14). To  
110 identify potential sources of heterogeneity, we did subgroup analysis according to the predefined  
111 criteria as follows: age ( $\geq 65$  vs.  $< 65$ ), gender (male vs. female), hypertension (yes vs. no), diabetes  
112 (yes vs. no), COPD (yes vs. no) and CVDs (yes vs. no). In addition to the main analysis, we carried  
113 out sensitivity analysis to find if the overall estimate depended on the effect size from a single  
114 study. Assessing the publication bias was done by the formal test of Egger (15). All statistical  
115 analyses were conducted using Stata, version 14.0 (Stata Corp, College Station, TX, USA). P-  
116 values were considered significant at level of  $< 0.05$ .

117

## 118 *Results*

### 119 *Search results*

120 In our initial search, we found 135 papers. Of these, 15 duplicates, 17 non-English, 26 non-human,  
121 46 reviews and 17 studies that did not fulfill our eligibility criteria were excluded, leaving 14  
122 papers for further evaluation. Out of remaining 14 papers, 8 were excluded because of the  
123 following reason: did not report HRs, ORs or RRs with 95% CIs. Finally, we included 6  
124 retrospective studies in the current systematic review and meta-analysis (Figure 1).

125

### 126 *Study characteristics*

127 All studies were conducted in Wuhan, China and used retrospective cohort design (2, 6, 8-11). The  
128 sample size of studies varied from 172 to 20812 patients (mean age, 58.7 years). Five studies used

129 real-time reverse transcriptase–polymerase chain reaction (RT-PCR) (2, 6, 8, 10, 11) and one study  
130 used clinical features (9) to identify COVID-19 infection. The NOS scores ranged between 5 to 8.

131

### 132 *Demographic characteristics and risk of death from COVID-19*

133 In the meta-analysis of six effect sizes, obtained from six studies (2, 6, 8-11) (22,350 patients and  
134 741 cases of death), we found that older age ( $\geq 65$  years old) was associated with a 239% (over  
135 twofold) increased risk of COVID-19 mortality (combined effect size=2.39, 95% CIs=1.75-3.28,  
136  $p < 0.001$ ,  $I^2 = 95.4\%$ ,  $p_{\text{heterogeneity}} < 0.001$ ) (Figure 2). Combining five effect sizes from five studies  
137 (2, 6, 8-10) revealed no significant association between gender (male vs. female) and COVID-19  
138 mortality (combined effect size=1.25, 95% CIs=0.75-2.09,  $p = 0.399$ ,  $I^2 = 83.8\%$ ,  $p_{\text{heterogeneity}} < 0.001$ )  
139 (Figure 2).

140

### 141 *Comorbidities and risk of death from COVID-19*

142 Totally, fifteen effect sizes from five studies (2, 6, 8, 10, 11) with a total of 21,640 patients and  
143 652 cases of death were extracted for the association between comorbidities and COVID-19  
144 mortality. Combining the reported estimates, we found a significant positive association between  
145 hypertension (combined effect size=3.29, 95% CIs=1.54-7.05,  $p = 0.002$ ,  $I^2 = 86.3\%$ ,  
146  $p_{\text{heterogeneity}} < 0.001$ ), diabetes (combined effect size=3.11, 95% CIs=1.10-8.80,  $p = 0.032$ ,  $I^2 = 91.3\%$ ,  
147  $p_{\text{heterogeneity}} < 0.001$ ), COPD (combined effect size=7.69, 95% CIs=5.65-10.47,  $p < 0.001$ ,  $I^2 = 0.0\%$ ,  
148  $p_{\text{heterogeneity}} = 0.919$ ), CVDs (combined effect size=7.39, 95% CIs=2.88-18.96,  $p < 0.001$ ,  $I^2 = 61.5\%$ ,  
149  $p_{\text{heterogeneity}} = 0.075$ ) and risk of death from COVID-19 (Figure 3). We found that hypertension,  
150 diabetes, COPD and CVDs were associated with 329% (over threefold), 311% (over threefold),

151 769% (over sevenfold) and 739% (over sevenfold) higher risk of COVID-19 mortality,  
152 respectively.

153

#### 154 *Sensitivity analysis and publication bias*

155 Findings from sensitivity analysis showed that overall estimates on the association of demographic  
156 characteristics and comorbidities with COVID-19 mortality did not depend on a single study.  
157 Furthermore, based on the results of Egger's test (hypertension;  $P=0.077$ , diabetes;  $P=0.65$ ,  
158 COPD;  $P=0.456$  and CVDs;  $P=0.401$ ), we found no evidence of publication bias.

159

#### 160 *Discussion*

161 Findings from the current systematic review and meta-analysis supported the hypothesis that older  
162 age ( $\geq 65$  years old), hypertension, diabetes, COPD and CVDs were associated with higher risk of  
163 mortality from COVID-19 infection. To the best of our knowledge, current study is the first meta-  
164 analysis to summarize earlier retrospective studies on the association between demographic  
165 characteristics, comorbidities and risk of death from COVID-19.

166 Our findings are partially in agreement with previous narrative review (16). Previously, older age  
167 has been reported as an important risk factor for mortality in SARS and Middle East respiratory  
168 syndrome (MERS) (17, 18). The current meta-analysis confirmed that increased age ( $\geq 65$  years  
169 old) was associated with death in COVID-19 patients. The age-dependent defects in B-cell and T-  
170 cell function and the excess production of type 2 cytokines could lead to prolonged  
171 proinflammatory responses and deficiency in control of viral replication, potentially leading to



172 poor outcome (19). In addition, elderly patients may have other risk factors, such as sarcopenia  
173 and comorbidities (11).

174 Previous studies suggested that COVID-19 infection is more likely to affect older males with  
175 comorbidities, and can result in fatal respiratory diseases such as acute respiratory disease  
176 syndrome (10, 20). Interestingly, SARS and MERS also infected more males compared to females  
177 (21, 22). Differences in the levels and type of circulating sex hormones in males and females might  
178 influence the susceptibility of COVID-19 infection. Previous study showed that sex hormones  
179 modulate the responses of adaptive and innate immunity (23). However, our findings showed that  
180 gender was not a risk factor for mortality in COVID-19 patients.

181 The other risk factors related to death include hypertension, diabetes, respiratory system disease  
182 and CVDs. A previous study showed that hypertension and diabetes are more prevalent in patients  
183 with severe MERS infection (22). Similarly, the mortality rate of influenza was significantly higher  
184 in patients with hypertension, metabolic disease, CVDs and respiratory system disease (24).  
185 Previous studies reported that high protein expression of angiotensin converting enzyme 2 (ACE2)  
186 receptor, the receptor for COVID-19, in specific organs correlated with organ failures in SARS  
187 patients (25-28). It has been shown that circulating ACE2 levels are higher in patients with  
188 hypertension, diabetes and CVDs (29, 30). Therefore, patients with these comorbidities may be  
189 more prone to die from COVID-19 infection because of the high expression of ACE2 receptor,  
190 though further research on the mechanism is needed.

191 The pathogenesis of COVID-19 is still not completely understood. Cytokine storm is thought to  
192 play an important role in disease severity (31). Neutrophilia was found in both the lung and  
193 peripheral blood of patients with SARS (32, 33). The severity of lung damage correlated with  
194 higher numbers of neutrophils and macrophages in the peripheral blood and extensive pulmonary

195 infiltration of these cells in patients with MERS (34-36). Neutrophils are the main source of  
196 cytokines and chemokines. The generation of cytokine storm can lead to acute respiratory distress  
197 syndrome, which is a leading cause of death in patients with SARS and MERS (36, 37). This may  
198 explain the positive association between high fever and acute respiratory distress syndrome found  
199 at the early stages of COVID-19 infection (6).

200 The present study has some limitations. First, interpretation of our meta-analysis findings might  
201 be limited by the small sample size. However, by including studies conducted in different  
202 designated hospitals for COVID-19, we believe our findings are representative of cases in Wuhan,  
203 China. Second, our meta-analysis did not include data such as smoking history and body mass  
204 index, which are potential risk factors for disease severity and mortality.

205

## 206 *Conclusion*

207 Older age, hypertension, diabetes, COPD and CVDs were associated with greater risk of death  
208 from COVID-19 infection. The results of the present meta-analysis could help clinicians to identify  
209 high risk groups that should receive off-label medications or invasive supportive care, as soon as  
210 possible.

211

212 Contributors: MP, SY, AS and MHJ conceived the study conception and design. MP, SY and PS  
213 contributed to the literature search. MP, SY, AS and MD performed the acquisition of data. MP,  
214 SY, MHJ and MD conducted the analysis and interpretation of data. MP, AS, PS and MD drafted  
215 the manuscript. MP, MHJ and MD contributed to critical revision of the manuscript.

216 Declaration of Competing Interest: None declared.

217

218 Funding: The authors have not declared a specific grant for this research from any funding  
219 agency in the public, commercial or not-for-profit sectors.

220

221

222

223

224

225

226

227

228

229

230

231

232

233

234

235

236

237

238

239

240

241

242   References:

- 243   1.     Phelan AL, Katz R, Gostin LO. The novel coronavirus originating in Wuhan, China: challenges for  
244   global health governance. *Jama*. 2020;323(8):709-10.
- 245   2.     Zhou F, Yu T, Du R, Fan G, Liu Y, Liu Z, et al. Clinical course and risk factors for mortality of adult  
246   inpatients with COVID-19 in Wuhan, China: a retrospective cohort study. *Lancet (London, England)*. 2020  
247   Mar 11. PubMed PMID: 32171076. Epub 2020/03/15. eng.
- 248   3.     World Health Organization. Coronavirus disease 2019 (COVID-19): situation report-68. March  
249   28, 2020.
- 250   4.     Zhu N, Zhang D, Wang W, Li X, Yang B, Song J, et al. A Novel Coronavirus from Patients with  
251   Pneumonia in China, 2019. *The New England journal of medicine*. 2020 Feb 20;382(8):727-33. PubMed  
252   PMID: 31978945. Epub 2020/01/25. eng.
- 253   5.     Huang C, Wang Y, Li X, Ren L, Zhao J, Hu Y, et al. Clinical features of patients infected with 2019  
254   novel coronavirus in Wuhan, China. *Lancet (London, England)*. 2020 Feb 15;395(10223):497-506.  
255   PubMed PMID: 31986264. Epub 2020/01/28. eng.
- 256   6.     Wu C, Chen X, Cai Y, Xia J, Zhou X, Xu S, et al. Risk Factors Associated With Acute Respiratory  
257   Distress Syndrome and Death in Patients With Coronavirus Disease 2019 Pneumonia in Wuhan, China.  
258   *JAMA internal medicine*. 2020 Mar 13. PubMed PMID: 32167524. Pubmed Central PMCID: PMC7070509.  
259   Epub 2020/03/14. eng.
- 260   7.     Chen N, Zhou M, Dong X, Qu J, Gong F, Han Y, et al. Epidemiological and clinical characteristics  
261   of 99 cases of 2019 novel coronavirus pneumonia in Wuhan, China: a descriptive study. *Lancet (London,*  
262   *England)*. 2020 Feb 15;395(10223):507-13. PubMed PMID: 32007143. Epub 2020/02/03. eng.
- 263   8.     Caramelo F, Ferreira N, Oliveiros B. Estimation of risk factors for COVID-19 mortality-preliminary  
264   results. *medRxiv*. 2020.
- 265   9.     Cheng Y, Luo R, Wang K, Zhang M, Wang Z, Dong L, et al. Kidney impairment is associated with  
266   in-hospital death of COVID-19 patients. *medRxiv*. 2020.
- 267   10.    Su VYF, Yang Y-H, Yang K-Y, Chou K-T, Su W-J, Chen Y-M, et al. The Risk of Death in 2019 Novel  
268   Coronavirus Disease (COVID-19) in Hubei Province. Available at SSRN 3539655. 2020.
- 269   11.    Wang K, Zuo P, Liu Y, Zhang M, Zhao X, Xie S, et al. Clinical and Laboratory Predictors of In-  
270   Hospital Mortality in 305 Patients with COVID-19: A Cohort Study in Wuhan, China. *China (2/24/2020)*.  
271   2020.
- 272   12.    Moher D, Liberati A, Tetzlaff J, Altman DG. Preferred reporting items for systematic reviews and  
273   meta-analyses: the PRISMA statement. *Annals of internal medicine*. 2009;151(4):264-9.
- 274   13.    Stang A. Critical evaluation of the Newcastle-Ottawa scale for the assessment of the quality of  
275   nonrandomized studies in meta-analyses. *European journal of epidemiology*. 2010 Sep;25(9):603-5.  
276   PubMed PMID: 20652370. Epub 2010/07/24. eng.
- 277   14.    Higgins J, Wells G. *Cochrane handbook for systematic reviews of interventions*. 2011.
- 278   15.    Egger M, Smith GD, Schneider M, Minder C. Bias in meta-analysis detected by a simple, graphical  
279   test. *Bmj*. 1997;315(7109):629-34.
- 280   16.    Leung C. Clinical features of deaths in the novel coronavirus epidemic in China. *Reviews in*  
281   *medical virology*. 2020 Mar 16:e2103. PubMed PMID: 32175637. Epub 2020/03/17. eng.
- 282   17.    Choi KW, Chau TN, Tsang O, Tso E, Chiu MC, Tong WL, et al. Outcomes and prognostic factors in  
283   267 patients with severe acute respiratory syndrome in Hong Kong. *Ann Intern Med*. 2003 Nov  
284   4;139(9):715-23. PubMed PMID: 14597455. Epub 2003/11/05. eng.
- 285   18.    Hong KH, Choi JP, Hong SH, Lee J, Kwon JS, Kim SM, et al. Predictors of mortality in Middle East  
286   respiratory syndrome (MERS). *Thorax*. 2018 Mar;73(3):286-9. PubMed PMID: 28724637. Epub  
287   2017/07/21. eng.

- 288 19. Opal SM, Girard TD, Ely EW. The immunopathogenesis of sepsis in elderly patients. *Clinical*  
289 *infectious diseases : an official publication of the Infectious Diseases Society of America*. 2005 Nov 15;41  
290 Suppl 7:S504-12. PubMed PMID: 16237654. Epub 2005/10/21. eng.
- 291 20. Zhang JJ, Dong X, Cao YY, Yuan YD, Yang YB, Yan YQ, et al. Clinical characteristics of 140 patients  
292 infected with SARS-CoV-2 in Wuhan, China. *Allergy*. 2020 Feb 19. PubMed PMID: 32077115. Epub  
293 2020/02/23. eng.
- 294 21. Channappanavar R, Fett C, Mack M, Ten Eyck PP, Meyerholz DK, Perlman S. Sex-Based  
295 Differences in Susceptibility to Severe Acute Respiratory Syndrome Coronavirus Infection. *Journal of*  
296 *immunology (Baltimore, Md : 1950)*. 2017 May 15;198(10):4046-53. PubMed PMID: 28373583. Pubmed  
297 Central PMCID: PMC5450662. Epub 2017/04/05. eng.
- 298 22. Badawi A, Ryoo SG. Prevalence of comorbidities in the Middle East respiratory syndrome  
299 coronavirus (MERS-CoV): a systematic review and meta-analysis. *International journal of infectious*  
300 *diseases : IJID : official publication of the International Society for Infectious Diseases*. 2016 Aug;49:129-  
301 33. PubMed PMID: 27352628. Epub 2016/06/30. eng.
- 302 23. Jaillon S, Berthenet K, Garlanda C. Sexual Dimorphism in Innate Immunity. *Clinical reviews in*  
303 *allergy & immunology*. 2019 Jun;56(3):308-21. PubMed PMID: 28963611. Epub 2017/10/01. eng.
- 304 24. Mertz D, Kim TH, Johnstone J, Lam PP, Science M, Kuster SP, et al. Populations at risk for severe  
305 or complicated influenza illness: systematic review and meta-analysis. *Bmj*. 2013 Aug 23;347:f5061.  
306 PubMed PMID: 23974637. Pubmed Central PMCID: PMC3805492. Epub 2013/08/27. eng.
- 307 25. Hoffmann M, Kleine-Weber H, Krüger N, Mueller MA, Drosten C, Pöhlmann S. The novel  
308 coronavirus 2019 (2019-nCoV) uses the SARS-coronavirus receptor ACE2 and the cellular protease  
309 TMPRSS2 for entry into target cells. *BioRxiv*. 2020.
- 310 26. Yang JK, Feng Y, Yuan MY, Yuan SY, Fu HJ, Wu BY, et al. Plasma glucose levels and diabetes are  
311 independent predictors for mortality and morbidity in patients with SARS. *Diabetic medicine : a journal*  
312 *of the British Diabetic Association*. 2006 Jun;23(6):623-8. PubMed PMID: 16759303. Epub 2006/06/09.  
313 eng.
- 314 27. Yang JK, Lin SS, Ji XJ, Guo LM. Binding of SARS coronavirus to its receptor damages islets and  
315 causes acute diabetes. *Acta diabetologica*. 2010 Sep;47(3):193-9. PubMed PMID: 19333547. Epub  
316 2009/04/01. eng.
- 317 28. Li R, Qiao S, Zhang G. Analysis of angiotensin-converting enzyme 2 (ACE2) from different species  
318 sheds some light on cross-species receptor usage of a novel coronavirus 2019-nCoV. *The Journal of*  
319 *infection*. 2020 Apr;80(4):469-96. PubMed PMID: 32092392. Epub 2020/02/25. eng.
- 320 29. Patel SK, Velkoska E, Freeman M, Wai B, Lancefield TF, Burrell LM. From gene to protein-  
321 experimental and clinical studies of ACE2 in blood pressure control and arterial hypertension. *Frontiers*  
322 *in physiology*. 2014;5:227. PubMed PMID: 25009501. Pubmed Central PMCID: PMC4067757. Epub  
323 2014/07/11. eng.
- 324 30. Patel SK, Velkoska E, Burrell LM. Emerging markers in cardiovascular disease: where does  
325 angiotensin-converting enzyme 2 fit in? *Clinical and experimental pharmacology & physiology*. 2013  
326 Aug;40(8):551-9. PubMed PMID: 23432153. Epub 2013/02/26. eng.
- 327 31. Channappanavar R, Perlman S. Pathogenic human coronavirus infections: causes and  
328 consequences of cytokine storm and immunopathology. *Seminars in immunopathology*. 2017  
329 Jul;39(5):529-39. PubMed PMID: 28466096. Epub 2017/05/04. eng.
- 330 32. Nicholls JM, Poon LL, Lee KC, Ng WF, Lai ST, Leung CY, et al. Lung pathology of fatal severe acute  
331 respiratory syndrome. *Lancet (London, England)*. 2003 May 24;361(9371):1773-8. PubMed PMID:  
332 12781536. Epub 2003/06/05. eng.
- 333 33. Wang YH, Lin AS, Chao TY, Lu SN, Liu JW, Chen SS, et al. A cluster of patients with severe acute  
334 respiratory syndrome in a chest ward in southern Taiwan. *Intensive care medicine*. 2004 Jun;30(6):1228-  
335 31. PubMed PMID: 15105985. Epub 2004/04/24. eng.

- 336 34. Ng DL, Al Hosani F, Keating MK, Gerber SI, Jones TL, Metcalfe MG, et al. Clinicopathologic,  
337 Immunohistochemical, and Ultrastructural Findings of a Fatal Case of Middle East Respiratory Syndrome  
338 Coronavirus Infection in the United Arab Emirates, April 2014. *The American journal of pathology*. 2016  
339 Mar;186(3):652-8. PubMed PMID: 26857507. Epub 2016/02/10. eng.
- 340 35. Min CK, Cheon S, Ha NY, Sohn KM, Kim Y, Aigerim A, et al. Comparative and kinetic analysis of  
341 viral shedding and immunological responses in MERS patients representing a broad spectrum of disease  
342 severity. *Scientific reports*. 2016 May 5;6:25359. PubMed PMID: 27146253. Pubmed Central PMCID:  
343 PMC4857172. Epub 2016/05/06. eng.
- 344 36. Kim ES, Choe PG, Park WB, Oh HS, Kim EJ, Nam EY, et al. Clinical Progression and Cytokine  
345 Profiles of Middle East Respiratory Syndrome Coronavirus Infection. *Journal of Korean medical science*.  
346 2016 Nov;31(11):1717-25. PubMed PMID: 27709848. Pubmed Central PMCID: PMC5056202. Epub  
347 2016/10/07. eng.
- 348 37. Lew TW, Kwek TK, Tai D, Earnest A, Loo S, Singh K, et al. Acute respiratory distress syndrome in  
349 critically ill patients with severe acute respiratory syndrome. *Jama*. 2003 Jul 16;290(3):374-80. PubMed  
350 PMID: 12865379. Epub 2003/07/17. eng.

351

352

353

354

355

356

357

358

359

360

361

362

363

364

365

366

367

368

Table 1. Characteristics of studies included in the meta-analysis.

Authors (year)	Design of study	Country	Mean age (y)	Sample size	Sex	Death cases	COVID-19 <sup>a</sup> detection	Demographic and clinical characteristics	HR, OR or RR (95%CI) <sup>b</sup>	Adjustment
<b>Wu et al. (2020)</b>	Retrospective cohort	China	51	201	F/M	44	real-time RT-PCR	Age ( $\geq 65$ vs $< 65$ years) Gender (male vs female) Hypertension (yes vs no) Diabetes (yes vs no)	HR: 6.17 (3.26-11.67) HR: 0.56 (0.30-1.05) HR: 1.70 (0.92-3.14) HR: 1.58 (0.80-3.13)	-
<b>Zhou et al. (2020)</b>	Retrospective cohort	China	56	191	F/M	54	real-time RT-PCR	Age ( $\geq 65$ vs $< 65$ years) Gender (male vs female) Hypertension (yes vs no) Diabetes (yes vs no) COPD (yes vs no) CVDs (yes vs no)	OR: 1.10 (1.03-1.17) OR: 0.61 (0.31-1.20) OR: 3.05 (1.57-5.92) OR: 2.85 (1.35-6.05) OR: 5.40 (0.96-30.40) OR: 2.14 (0.26-17.79)	study center
<b>Caramelo et al. (2020)</b>	Retrospective cohort	China	-	20812	F/M	504	real-time RT-PCR	Age ( $\geq 65$ vs $< 65$ years) Gender (male vs female) Hypertension (yes vs no) Diabetes (yes vs no) COPD (yes vs no) CVDs (yes vs no)	OR: 18.82 (7.20-41.55) OR: 1.85 (1.60-2.13) OR: 7.42 (6.33-8.79) OR: 9.03 (7.39-11.35) OR: 7.79 (5.54-10.43) OR: 12.83 (10.27-15.86)	age, gender and comorbidities
<b>Cheng et al. (2020)</b>	Consecutive cohort	China	63	710	F/M	89	respiratory rate $> 30$ /min, or oxygen saturation $\leq 93\%$ , or PaO <sub>2</sub> /FiO <sub>2</sub> ratio $\leq 300$ mmHg	Age ( $\geq 65$ vs $< 65$ years) Gender (male vs female)	HR: 2.51 (1.64-3.86) HR: 2.44 (1.53-3.87)	age, gender, disease severity, leukocyte count and lymphocyte count
<b>Su et al. (2020)</b>	Retrospective cohort	China	71.6	172	F/M	32	real-time RT-PCR	Age ( $\geq 65$ vs $< 65$ years) Gender (male vs female) Hypertension (yes vs no) Diabetes (yes vs no) COPD (yes vs no) CVDs (yes vs no)	OR: 26.00 (7.50-89.8) OR: 1.53 (0.75-3.13) OR: 3.50 (1.10-10.80) OR: 1.90 (0.60-5.50) OR: 7.40 (0.80-67.00) OR: 5.10 (1.70-15.60)	-
<b>Wang et al. (2020)</b>	Retrospective cohort	China	47.8	264	F/M	18	real-time RT-PCR	Age ( $\geq 65$ vs $< 65$ years) Hypertension (yes vs no)	OR: 1.07 (1.01-1.13) OR: 2.24 (0.57-8.72)	-

Abbreviations: <sup>a</sup>COVID-19: Coronavirus diseases 2019, <sup>b</sup>HR: Hazard ratio, OR: Odds ratio, RR: Relative risk.

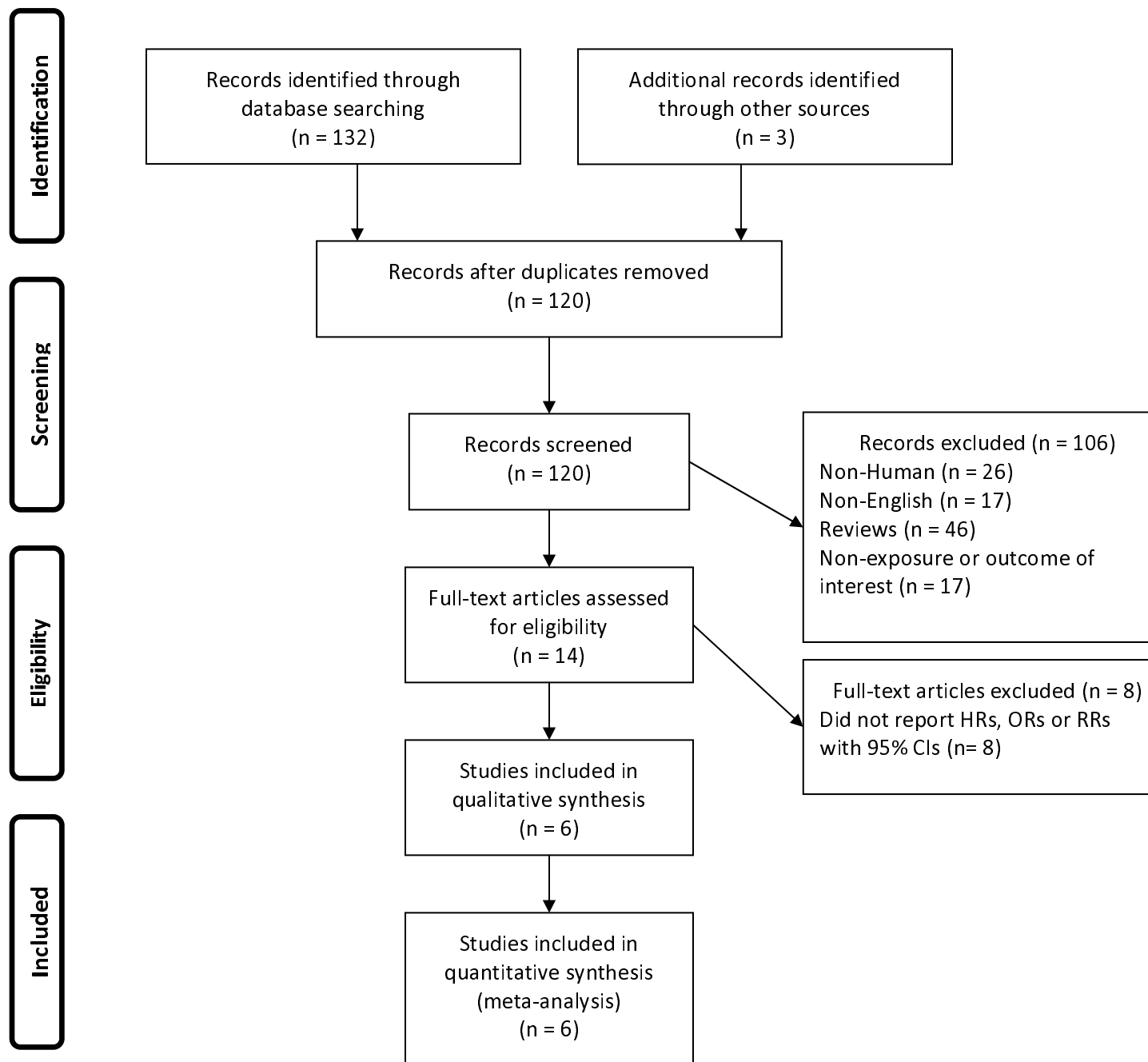


Figure 1. Flow chart of study selection.



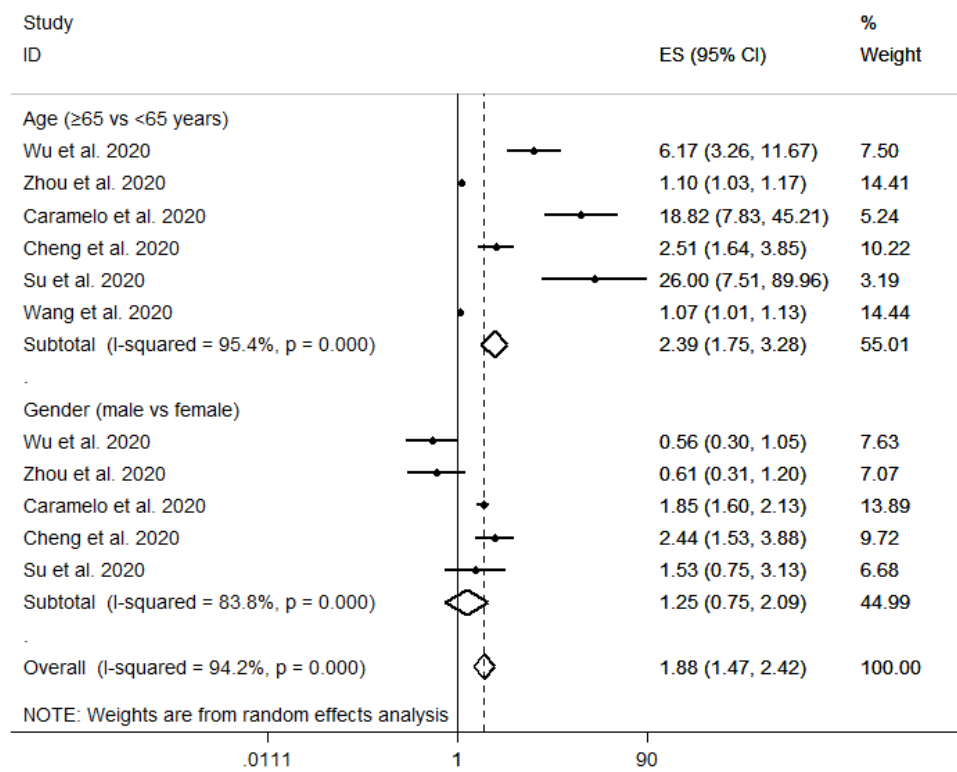


Figure 2. Forest plot for the association between age, gender and risk of mortality from COVID-19 using random-effects model.

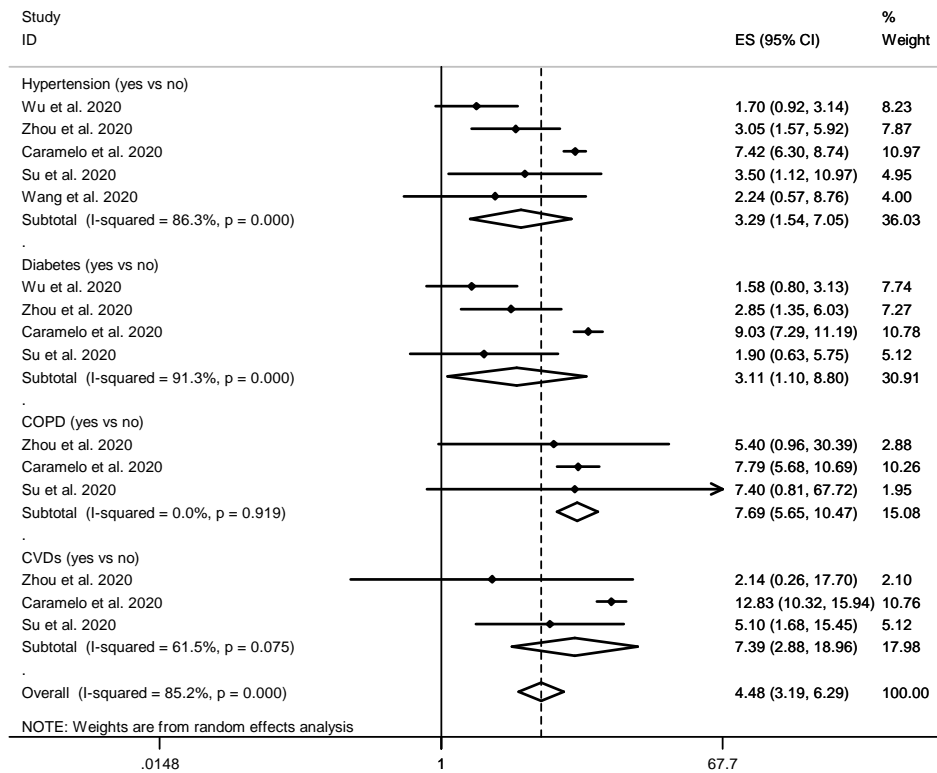


Figure 3. Forest plot for the association between comorbidities and risk of mortality from COVID-19 using random-effects model. Chronic obstructive pulmonary disease (COPD), Cardiovascular diseases (CVDs).