

1 ***ESTIMATION OF COVID-19 CASES IN FRANCE AND IN DIFFERENT COUNTRIES:***  
2 ***HOMOGENEISATION BASED ON MORTALITY***

3 *Marc DHENAIN*

4  
5 (1) Académie Vétérinaire de France, 34, rue Bréguet, 75011 Paris, France

6 (2) Académie Nationale de Médecine, 16 rue Bonaparte, 75006 Paris, France

7 (3) Centre National de la Recherche Scientifique (CNRS), Université Paris-Sud, Université Paris-Saclay UMR  
8 9199, Laboratoire des Maladies Neurodégénératives, 18 Route du Panorama, F-92265 Fontenay-aux-Roses,  
9 France.

10 (4) Commissariat à l’Energie Atomique et aux Energies Alternatives (CEA), Institut François Jacob, Molecular  
11 Imaging Research Center (MIRcen), 18 Route du Panorama, F-92265 Fontenay-aux-Roses, France.

12  
13 **Correspondance**

14 Marc Dhenain

15 MIRcen, UMR CEA-CNRS 9199, 18 Route du Panorama, 92 265 Fontenay-aux-Roses CEDEX, France

16 Tel: +33 1 46 54 81 92; Fax: +33 1 46 54 84 51; email: Marc.Dhenain@cea.fr

17  
18 ***Abstract:***

19 *Every day the authorities of different countries provide an estimate of the number of persons*  
20 *affected by Covid-19 and a count of fatality. We propose to use the fatality reported in each*  
21 *country to provide a better estimate ( $C_{t0-estimated}$ ) of the number of cases at a given time  $t_0$ .*

22 
$$C_{t0-estimated} = (F_{t0} / F_{r-est}) * (F_{t0} / F_{t0-3d})^6$$

23 *With  $F_{t0}$ : number of fatalities reported in a country at time  $t_0$ ;  $F_{t0}$ : number of fatalities reported*  
24 *in a country at time  $t_0$  minus 3 days;  $F_{r-est}$ : estimated fatality rate. Based on  $C_{t0-estimated}$  calculated*  
25 *using a fatality rate of 2%, we assessed the number of cases April 10<sup>th</sup>, 2020 in Belgium, China,*  
26 *France, Germany, Iran, Italy, South Korea, Netherlands, Spain, United Kingdom and USA.*  
27 *This number reached 2,872,097 in France and 924,892 persons in Germany. This work*  
28 *suggests a very strong underestimation of the number of cases of people affected, with a*  
29 *notification index often lower than 5%. The proposed formulas also make it possible to evaluate*  
30 *the impact of policies to prevent the spread of epidemic.*

31  
32 ***Key-Words: Covid-19, Estimated number of cases, Mortality, Prevalence***

33  
34 *Version submitted on May 10th 2020*

35 A French first version of this article is “in press” as

36 **Dhenain Marc, Estimation du nombre de cas de Covid-19 en France et dans différents pays :**  
37 **homogénéisation basée sur la mortalité, Bulletin de l’Académie Vétérinaire de France, 2020 (provisionally**  
38 **accepted), <https://academie-veterinaire-defrance.org/bavf-coronavirus/>**

NOTE: This preprint reports new research that has not been certified by peer review and should not be used to guide clinical practice.

## 1 INTRODUCTION

2 The Sars-CoV-2 coronavirus infection that causes Covid-19 has spread worldwide leading to  
3 significant deaths (European Center for Disease Prevention and Control 2020). Every day  
4 authorities of different countries provide an estimate of the number of affected persons and a  
5 count of fatalities (Dong et al. 2020, <https://ourworldindata.org/covid-testing>,  
6 [https://github.com/CSSEGISandData/COVID-19/tree/master/csse\\_covid\\_19\\_data/csse\\_covid\\_19\\_time\\_series](https://github.com/CSSEGISandData/COVID-19/tree/master/csse_covid_19_data/csse_covid_19_time_series)).  
7 Knowing the number of affected subjects is critical for implementing strategies to protect  
8 populations and for ending the crisis. Figures reported by different countries reveal strong  
9 differences and only partly reflects the reality (Table I). For example, the day their death toll  
10 approached 3,000 people, France had 44,550 people affected versus 80,537 for China and  
11 122,171 for Germany. Calculating the case fatality rate ( $F_r$ ) on a given day ( $t_0$ ) is another way  
12 to objectify differences between countries. At first sight,

$$13 \quad F_r = F_{t_0} / C_{t_0} \quad (\text{Eq. 1})$$

14 With  $F_{t_0}$  = number of fatalities reported on day  $t_0$ ;  $C_{t_0}$  = number of cases reported on day  $t_0$ .  
15 The day (the closest to April 10<sup>th</sup>, date of redaction of this article) when the death toll of  
16 different countries was the closest to 3,000 people, three countries (Germany, South Korea,  
17 and the United States) had fatality rates close to 2%; seven countries (Belgium, France, Iran,  
18 Italy, the Netherlands, Spain, and the United Kingdom) had rates between 6% and 12%, and  
19 China had an intermediate value of 3.7% (Table I).

20 Patients who die on any given day were infected much earlier, and thus the denominator of  
21 the fatality rate should be the total number of patients infected at the same time as those who  
22 died (Baud et al. 2020). This is particularly true as the rates of evolution of the pandemic  
23 evolve differently in various countries: in March 2020, the number of people affected  
24 increased sharply from day to day in France, while it was stable in China.

25 A better estimate of fatality rate is thus:

$$26 \quad F_{r-x\text{day}} = F_{t_0} / C_{t_0-x\text{days}} \quad (\text{Eq. 2})$$

27 With  $C_{t_0-x\text{days}}$  = number of cases reported on day  $t_0$  minus  $x$  days, with  $x$  = average time-  
28 period from onset of symptoms to death.

29 An average duration of 18 days is reported between the onset of symptoms and the death of  
30 Covid-19 patients (Ruan et al. 2020; Verity et al. 2020; Zhou et al. 2020). Thus, the adjusted  
31 Fatality rate ( $F_{r-18d}$ ) that takes into account this average delay is (Flaxman et al. 2020).

$$32 \quad F_{r-18d} = F_{t_0} / C_{t_0-18d} \quad (\text{Eq. 3, Table I})$$

1 With  $C_{t_0-18d}$  = number of cases reported on day  $t_0$  minus 18 days. The calculation of  $F_{r-18d}$   
2 reveals widening gaps between countries compared to  $F_r$  with variations ranging from 2.3%  
3 (South Korea) to more than 700% for Spain.  
4 When comparing  $F_{t_0}$  and  $C_{t_0-18d}$  in different countries (Fig. 1), we see a linear relationship  
5 between mortality at  $t_0$  and the number of cases at  $t_0-18days$  for all countries (Pearson linear  
6 correlation test,  $p < 0.05$  except for Belgium ( $p = 0.07$ ) due to the small number of points ( $n = 3$ )).  
7 The slopes of the regression lines fitting the data vary widely between countries, which is  
8 consistent with variable  $F_{r-18}$ . The values of fatality rate  $F_{r-18}$  based on the cases reported by  
9 the different countries are therefore unreliable, in part because the number of cases reported in  
10 different countries is not reliable (different testing strategies in different countries).  
11 How to assess more precisely the number of people affected using a similar method for  
12 different countries? We offer a simple method using the number of deaths reported by each  
13 country to estimate and compare the rate of people affected by Covid-19. This method relies  
14 on three first assumptions: 1. The number of deaths reported by each country is reliable; 2.  
15 The fatality rate ( $F_r$ ) is known and similar in different countries; 3. The average time between  
16 the onset of symptoms and death is known (here considered 18 days). Based on these  
17 assumptions, one can calculate the number of cases presented eighteen days before a given  
18 day ( $t_0$ ). Two methods are then proposed to infer the number of cases, eighteen days later, at  
19 time  $t_0$ . The first one relies on the time-dependent increase in the number of cases reported in  
20 databases during these 18 days. The second one models the evolution of the number of cases  
21 based on daily rate of changes of the number of estimated cases 18 days before  $t_0$ .

22

## 23 **METHODS**

### 24 **Estimation of the number of cases at time $t_0$ minus 18 days based on fatality rate**

25 One way to estimate the number of Covid-19 cases is to infer the number of cases based on  
26 the number of death and the fatality rate calculated from well-controlled studies using the  
27 following formula

$$28 \quad C_{(est-18d)} = F_{t_0} / F_{r-est} \quad (\text{Eq. 4, Table II})$$

29 With  $C_{(est-18d)}$ : number of cases estimated 18 days before  $t_0$ ;  $F_{t_0}$  = number of deaths reported  
30 on day  $t_0$ ;  $F_{r-est}$  = estimated fatality rate from well-controlled studies.  $F_{r-est}$  can be assessed  
31 from well-controlled studies based on residents of mainland China, travelers returning from  
32 mainland China, repatriated from China, passengers on the *Diamond-Princess* cruise ship  
33 (values of 0.7 to 3.6% (Verity et al. 2020)). Here, based on this last study, we proposed to use  
34  $F_{r-est} = 2\%$ .

1 Knowing  $C_{(est-18d)}$  eighteen days before  $t_0$ , one needs to assess the progression rate of the  
2 cases during the 18 last days to estimate the number of cases at day  $t_0$  ( $C_{t_0-estimated}$ ). We tested  
3 two methods to assess this progression.

#### 4 **Estimation of progression of cases for 18 days based on reported number of cases**

5 One can assume that progression of estimated cases ( $P_{18d}$ ) reflects the time-dependent  
6 increase in the reported number of cases during the same time-period. In that case,

$$7 \quad P_{18d} = C_{t_0} / C_{t-18d} \quad (\text{Eq. 5})$$

8 With  $C_{t_0}$ : number of cases reported in a country at time  $t_0$ ;  $C_{t-18d}$ : number of cases reported in  
9 the country at time  $t_0$  minus 18 days. Thus,

$$10 \quad C_{t_0-estimated} = C_{(est-18d)} * P_{18d} \quad (\text{Eq. 6, Table II})$$

#### 11 **Estimation of progression of cases for 18 days based on 3-day rate of change of the** 12 **estimated $C_{(est-18d)}$**

13 Another option to assess the progression of cases for 18 days is to calculate the daily rate of  
14 change of the number of estimated cases ( $R_d$ ) or alternatively 3-day rate of change ( $R_{3d}$ ) of the  
15 number of estimated cases

$$16 \quad R_{3d} = (C_t / C_{t-3d}) - 1 \quad (\text{i.e. } (C_t - C_{t-3}) / C_{t-3d}) \quad (\text{Eq. 7})$$

17 With  $C_{t_0}$ : number of cases reported at time  $t_0$ ;  $C_{t_0-3d}$ : number of cases reported at time  $t_0$  minus  
18 3 days.

19 The last day when this calculation is possible is 18 days before  $t_0$ .

$$20 \quad R_{3d-18d} = (C_{(est-18d)} / C_{(est-21d)}) - 1 \quad (\text{i.e. } (C_{(est-18d)} - C_{(est-21d)}) / C_{(est-21d)}) \quad (\text{Eq. 8})$$

21 With  $C_{(est-18d)}$ : estimated cases 18 days before  $t_0$  (see Eq. 4);  $C_{(est-21d)}$ : estimated cases three  
22 days before. Assuming that the progression of the estimated cases follows an exponential  
23 model then

$$24 \quad C_{t_0-estimated} = C_{(est-18d)} * (1 + R_{3d-18d})^6 = C_{(est-18d)} * (F_{t_0} / F_{t_0-3d})^6 \quad (\text{Eq. 9})$$

25 With  $F_{t_0-3d}$ : number of fatalities reported in a country at time  $t_0$  minus 3 days. The exponent 6  
26 represents the period of the model as  $6 * 3 \text{ days} = 18 \text{ days}$ . This estimation supposes that  $R_{3d}$   
27 does not evolve with time, during the last 18 days.

$$28 \quad \text{Thus } C_{t_0-estimated} = (F_{t_0} / F_{t-est}) * (F_{t_0} / F_{t_0-3d})^6 \quad (\text{Eq. 10})$$

#### 30 **Comparison with basic reproductive potential of the pathogen ( $R_0$ )**

31 The basic reproductive potential of the pathogen ( $R_0$ ) is an important index in epidemiology.  
32 It is defined as the average number of secondary cases arising from a primary case in an  
33 entirely susceptible population. Another critical parameter is the mean generation time ( $T_g$ )

1 *i.e.*, the time between the infection of a primary case and the infection of a secondary case  
2 (Flaxman et al. 2020; Keeling & Rohani, 2008).

3 Assuming that the progression of Covid-19 follows a SEIR model based on four  
4 compartments (Susceptible, Exposed, Infectious, and Recovered subjects (Keeling & Rohani,  
5 2008)), the increase in prevalence during the invasion phase of the disease is estimated as

$$6 \quad C_{SEIR(t)} \approx C_{(t_0)} \exp \{[(\sqrt{R_0} - 1) * \gamma] * t\} \quad (\text{Eq. 11, Keeling \& Rohani, 2008})$$

7 With C: number of infected cases at a time t or t<sub>0</sub>; R<sub>0</sub>: the basic reproductive potential of the  
8 pathogen; γ: the recovery rate γ with 1/γ: the infectious period (Di).

9 This equation allows to estimate the doubling time for cases (T<sub>2</sub>) if C<sub>SEIR(t)</sub>/C<sub>(t<sub>0</sub>)</sub>=2.

$$10 \quad T_2 = \ln(2) / [(\sqrt{R_0} - 1) * \gamma] \quad (\text{Eq. 12})$$

$$11 \quad \text{thus } R_0 = [[\ln(2) / (T_2 * \gamma)] + 1]^2 \quad (\text{Eq. 13})$$

$$12 \quad T_g \approx D_e + D_i/2 \quad (\text{Eq. 14})$$

13 if Covid-19 is modeled with a SEIR model (with D<sub>e</sub> = exposition time during which a subject  
14 is exposed but not infectious), and D<sub>e</sub> ≈ D<sub>i</sub> (Li et al., 2020).

15 One can thus estimate that

$$16 \quad R_0 = [[2 * T_g * \ln(2) / (3 * T_2)] + 1]^2 \quad (\text{Eq. 15})$$

17 Using the daily rate of change (R<sub>d</sub>) (or R<sub>3d</sub> / 3), and the "rule of 70", one can estimate

$$18 \quad T_2 = 0.7 / R_d \quad (\text{Eq. 16})$$

$$19 \quad \text{Thus } R_0 = [[2 * T_g * \ln(2) / (3 * 3 * 0.7 / R_{3d})] + 1]^2 \quad (\text{Eq. 17})$$

20 T<sub>g</sub> can be estimated to be 6.5 according to (Flaxman et al. 2020).

21

## 22 **RESULTS**

### 23 **Estimations relying on number of cases at time t<sub>0</sub> minus 18 days**

24 Using the (Eq. 4) and international databases (Dong et al. 2020,

25 [https://github.com/CSSEGISandData/COVID-19/tree/master/csse\\_covid\\_19\\_data/csse\\_covid\\_19\\_time\\_series](https://github.com/CSSEGISandData/COVID-19/tree/master/csse_covid_19_data/csse_covid_19_time_series)),

26 we estimated the number of people that have been affected by Covid-19 eighteen days before

27 April 10<sup>st</sup> 2020 in different countries (Table II). This estimation was 659,850 persons in

28 France and 138,350 in Germany. We then proposed two different methods to infer the number

29 of cases 18 days latter (Fig. 2). Method based on P<sub>18d</sub> evaluation using the reported number of

30 cases during the same time-period suggested a time-dependent decrease of number of cases in

31 some countries (*e.g.* Germany (Fig. 2C) or USA (Fig. 2D)), which is not consistent. Method

32 based on the evaluation of R<sub>3d</sub> provided a better correspondence with the estimated cases in

33 all tested countries (Fig. 2). We thus retained results from the R<sub>3d</sub> method for further analyses.

1 Estimation of the number of cases based, April 10<sup>th</sup> was 2,872,097 in France, 924,892 in  
2 Germany, 1,811,469 in Spain, 4,240,198 in the United Kingdom and 9,035,229 in the United  
3 States (Table II, Fig. 2, Fig. 3A).  $R_{3d}$  evaluation can further be used to assess the basic  
4 reproductive potential of the pathogen ( $R_0$ ) based on (Eq. 17). We reported  $R_0$  values from 1.0  
5 (China) to 2.86 (Belgium) (Table II).

6 This analysis is based on an estimated fatality rate from well-controlled studies ( $M_{r-est}$ ) of 2%.  
7 The estimated number of cases must be halved if the mortality rate used jumps from 2 to 4%  
8 (Table II). It must be doubled if the fatality rate used drops from 2 to 1%. Some authors  
9 suggest that the real fatality rate for Covid-19 could be 5.6 to 15.6% (Baud et al. 2020). If the  
10 calculation uses a fatality rate of 15%, then the estimated number of cases drops to 382,946  
11 for France, but it becomes lower than the number of cases actually reported for some  
12 countries (e.g. 2,242 *versus* 10,450 for South Korea), which is not consistent (Table II).  
13 In our study, we set the delay between the onset of symptoms and death at 18 days based on  
14 robust data from the literature (Ruan et al. 2020; Verity et al. 2020; Zhou et al. 2020) and  
15 delays used in other models (Flaxman et al. 2020). Lowering this delay, for example to 12  
16 days, sharply decreases the number of estimated cases (e.g. 1,645,302 for France (Table II))  
17 although it remains high compared to figures reported by most countries.

18 Using estimations based on  $R_{3d}$  model, with delay of 18 days between the onset of symptoms  
19 and death and fatality rate of 2%, we could thus compare estimated cases of Covid-19 in  
20 different countries (Fig. 3A), proportion of cases in different countries (Fig. 3B), as well as  
21 notification indexes which is the ability to report cases (Fig. 3C-D). These data highlight  
22 strong discrepancies between countries. It suggests a high proportion of affected persons in  
23 Belgium. It also shows notification indexes that varies from 60 to 80% in Korea while it is  
24 below 5% in most countries.

### 25 **Comparison of estimated cases with the number of cases reported afterwards**

26 The number of cases evaluated between March 16 and April 10, 2020 from the number of  
27 cases at time  $t_0$  minus 18 days and the  $R_{3d}$  model was compared with cases estimated from the  
28 number of cases at time  $t_0$  minus 18 days (without the  $R_{3d}$ -based model) calculated from  
29 mortality data collected between April 11 and 28, 2020 (Fig. 4). The cases estimated with the  
30  $R_{3d}$  model were higher than those estimated a posteriori. This can easily be explained by the  
31 reduction in the spread of the disease (and thus of  $R_{3d}$ ) in the past 18 days following the  
32 containment measures in many countries. The three-day rate of change in the number of  
33 estimated cases ( $R_{3d}$ ) we used is overstated.



1 The measurements that we have made allow to assess the impact of containment policies. For  
2 example, for France, the cases estimated on April 10 were based on an  $R_{3d}$  of 0.28 (measured  
3 on March 23). Five days before this date (March 19),  $R_{3d}$  was 0.50. Using an  $R_{3d}$  of 0.50  
4 (instead of 0.28) leads to an estimate of 7,516,104 cases on April 10. The reduction of  $R_{3d}$   
5 from 0.50 to 0.28 thanks to containment therefore prevented the appearance of 4,644,007 new  
6 cases in France (7,514,104 - 2,872,097). The number of cases estimated from the deaths  
7 which occurred on April 28, 2020 was in fact 1,141,450. Thus, the number of cases actually  
8 avoided is  $7,514,104 - 1,181,450 = 6,332,654$ . This represents 126 653 avoided deaths .

9

## 10 **DISCUSSION**

11 It is essential to assess the number of persons affected by Covid-19 in all countries of the world  
12 to stem this crisis. We propose to use the mortality reported by each country at a time  $t_0$  to create  
13 an index of the number of real cases at this same time  $t_0$ . Mortality at  $t_0$  makes it possible to  
14 estimate the number of cases 18 days earlier ( $C_{(est-18d)}$ ). Then, the rate of change over time of  
15 the estimated cases ( $C_{(est)}$ ) is evaluated over 3 days ( $R_{3d}$ ). This rate is used to modulate  $C_{(est-18d)}$ ,  
16 and calculate the number of cases at time  $t_0$ . This calculation leads to the following equation

$$17 \quad C_{t_0\text{-estimated}} = (F_{t_0} / F_{r\text{-est}}) * (F_{t_0} / F_{t_0-3d})^6 \quad (\text{Eq. 10})$$

18 With  $F_{t_0}$ : number of fatalities reported in a country at time  $t_0$ ;  $F_{t_0}$ : number of fatalities reported  
19 in a country at time  $t_0$  minus 3 days;  $F_{r\text{-est}}$ : estimated fatality rate. This analysis is based on  
20 four assumptions: 1. The number of deaths reported by each country is reliable, 2. The  
21 estimated fatality rate among people affected is known ( $F_{r\text{-est}}$ , here considered as 2%), 3. The  
22 average time between the onset of symptoms and death is known (here considered 18 days). 4.  
23 The rate of variation over three days of the estimated cases ( $R_{3d}$ ) does not change during the  
24 last 18 days. This last condition is not entirely exact because, thanks to containment policies,  
25 the rate of change over three days decreased continuously until the beginning of May 2020.

26  $C_{t_0\text{-estimated}}$  is thus overestimated as shown by the comparison of the values obtained with  
27 measurements a posteriori, that is to say without taking into account the modeling of the last  
28 18 days. Estimating the 3-day rate of change in the number of estimated cases ( $C_{(est-18d)}$  -  
29 Eq.4) can be used to assess  $R_0$ . The values of  $R_0$  that we have reported (from 1.0 (China) to  
30 2.86 (Belgium)) are consistent with data from the literature (for example  $R_0 = 4.0$  in Flaxman  
31 et al. 2020, at the beginning of pandemic). Conversely, the estimation of  $R_0$  on the basis of an  
32 epidemiological model (cf. for example (Flaxman et al. 2020)) could be used to calculate  $R_{3d}$   
33 (cf. Eq. 17) and refine the estimation of the number of cases. It would also be possible to

1 smooth out the risks of daily variations in the calculation of  $R_{3d}$  by using average measures of  
2  $R_{3d}$  over a longer period of time.

3 Our analyses showed that the number of Covid-19 cases in several country greatly exceeds  
4 the number of cases presented in international databases (2,872,097 (or 1,181,450 cases with a  
5 posteriori measures) versus 124,869 for France on April 10<sup>th</sup>, 2020). The very high values of  
6 estimated cases that we report are consistent with those evaluated with another method by  
7 (Flaxman et al. 2020). For example, we report 1.8 million cases in Spain while Flaxman  
8 reports 7.0 million on March 28<sup>th</sup>. Our calculation relies on a relatively simple method while  
9 that of Flaxman uses more complex analyzes (hierarchical semi-mechanistic Bayesian model).  
10 Our model used a fatality rate of 2% while several strongly controlled international studies  
11 reported rates of 0.7 to 3.6% (Verity et al. 2020). Values from 0.5 to 4% could thus be other  
12 reasonable options to estimate fatality rate. One of the limitations of our model is that fatality  
13 rates can change from one country to another, for example depending on the distribution of  
14 the population of different age groups that have different susceptibility to Covid-19. Also, it is  
15 possible that death rate changes over time in a given country, for example because of the  
16 saturation of hospitals or the correction of mortality figures to include non-counted cases (as  
17 done in France between April 1 and 4, 2020 to include mortality in nursing homes). We fixed  
18 a single value for the time between symptom occurrence and death (18 days). In reality, this  
19 time is variable with a 95% credible interval of 16.9 to 19.2 or more (Verity et al. 2020). We  
20 however considered that using such interval would make the model more complicated without  
21 strongly adding reliability compared to other potential sources of errors. Our analysis is based  
22 solely on the number of people who have died with confirmed Covid-19 cases. It is therefore  
23 essential that all countries are able to provide very reliable Covid-19 death values. Finally,  
24 note that to know the number of actual cases in a country at a given time, we must subtract  
25 from the estimates presented here the number of people healed, including those whose disease  
26 has not been identified.

27 To conclude, our model questions the small number of people reported to be affected by  
28 Covid-19 in most countries compared to the large numbers we estimate. This difference could  
29 be explained by a large underestimation of the "mortality rate". For example, in France, the  
30 "estimated mortality rate" should be changed from 2 to ~ 46% to decrease the estimate of the  
31 number of cases from 2,872,097 to 124,869. Obviously, a mortality rate of 46% is not  
32 observed. Thus, the only explanation that remains is that most countries strongly  
33 underestimate the number of affected people. The secondary interest of our model is that it



1 takes into account the rate of change over 3 days, over the past 18 days. Thus it can be used to  
2 model the effectiveness of policies to prevent the spread of Covid- 19.

3

#### 4 **ACKNOWLEDGMENTS**

5 We thank Matthieu Domenech de Cellès for constructive and supportive advices during the  
6 redaction of this manuscript.

7

#### 8 **REFERENCES**

9 Baud D, Qi X, Nielsen-Saines K, Musso D, Pomar L, Favre G. Real estimates of mortality  
10 following COVID-19 infection [published online ahead of print, 2020 Feb 19]. Lancet Infect  
11 Dis. 2020. doi: 10.1016/S1473-3099(20)30195-X.

12

13 Dong E, Du H, Gardner L. An interactive web-based dashboard to track COVID-19 in real  
14 time [published online ahead of print, 2020 Feb 19]. Lancet Infect Dis. 2020;S1473-  
15 3099(20)30120-1. doi:10.1016/S1473-3099(20)30120-1. Database available on:

16 [https://github.com/CSSEGISandData/COVID-19/tree/master/csse\\_covid\\_19\\_data/csse\\_covid\\_19\\_time\\_series](https://github.com/CSSEGISandData/COVID-19/tree/master/csse_covid_19_data/csse_covid_19_time_series)

17 Consulted 2020/04/20

18

19 Flaxman S, Mishra S, Gandy A, Unwin JT, Coupland H, Mellan TA et al. 2020. Estimating  
20 the number of infections and the impact of nonpharmaceutical interventions on COVID-19 in  
21 11 European countries. Imperial College London (30-03-2020). doi: 10.25561/77731

22

23 European Centre for Disease Prevention and Control. Situation Update-Worldwide.

24 Disponible à: <https://www.ecdc.europa.eu/en/geographical-distribution-2019-ncov-cases>.

25 Consulted 2020/04/20

26

27 Keeling, M.J. & Rohani, P. 2008. Modeling infectious diseases in humans and animals.

28 Chapter 2- Introduction to simple epidemic models. Princeton University Press.

29

30 Li, R., Pei, S., Chen, B., Song, Y., Zhang, T., Yang, W., Shaman, J. 2020. Substantial  
31 undocumented infection facilitates the rapid dissemination of novel coronavirus (SARS-  
32 CoV2). Science. doi: 10.1126/science.abb3221

33

- 1 Ruan Q, Yang K, Wang W, Jiang L, Song J. Clinical predictors of mortality due to COVID-  
2 19 based on an analysis of data of 150 patients from Wuhan, China [published online ahead of  
3 print, 2020 Mar 3]. *Intensive Care Med.* 2020;1–3. doi:10.1007/s00134-020-05991-x  
4
- 5 Verity R, Okell LC, Dorigatti I, Winskill P, Whittaker C, Imai N et al. Estimates of the  
6 severity of coronavirus disease 2019: a model-based analysis [published online ahead of print,  
7 2020 Mar 30]. *Lancet Infect Dis.* 2020;S1473-3099(20)30243-7. doi:10.1016/S1473-  
8 3099(20)30243-7  
9
- 10 Zhou F, Yu T, Du R, Fan G, Liu Y, Liu Z et al. Clinical course and risk factors for mortality  
11 of adult in patients with COVID-19 in Wuhan, China: a retrospective cohort study. *Lancet.*  
12 2020 ; 395: 1054-1062. doi: 10.1016/S0140-6736(20)30566-3

1 **FIGURES AND TABLES**

2

Country	Day ( $t_0$ )	Fatalities at $t_0$ ( $F_{t_0}$ )	Cases at $t_0$ ( $C_{t_0}$ )	Fatality rate $F_r$	Cases at $t_0-18d$ ( $C_{t_0-18d}$ )	Fatality rate $F_{r-18d}$
Belgium	April 10	3 019	26 667	11.3%	3743	80.7%
China	March 5	3 015	80 537	3.7%	70 513	4.3%
France	March 30	3 024	44 550	6.8%	2 281	132.6%
Germany	April 10	2 767	122 171	2.3%	29 056	9.5%
Iran	April 1	3 036	47 593	6.4%	12 729	23.9%
Italy	March 18	2 978	35 713	8.3%	1 128	264.0%
South-Korea	April 10	208	10 450	2.0%	8 961	2.3%
Netherlands	April 10	2 511	23 097	10.9%	4 749	52.9%
Spain	March 24	2 808	39 885	7.0%	400	702.0%
United Kingdom	April 2	2 921	33 718	8.6%	1 140	256.2%
USA	March 30	2 978	161 807	1.8%	1 163	256.1%

3

4 *Table I: Fatality rates in different countries when the number of deaths approached 3,000*

5 *people (or the last figure available when the 3,000 deaths were not reached April 10<sup>th</sup> 2020).*

6 ([https://github.com/CSSEGISandData/COVID-19/tree/master/csse\\_covid\\_19\\_data/csse\\_covid\\_19\\_time\\_series](https://github.com/CSSEGISandData/COVID-19/tree/master/csse_covid_19_data/csse_covid_19_time_series))

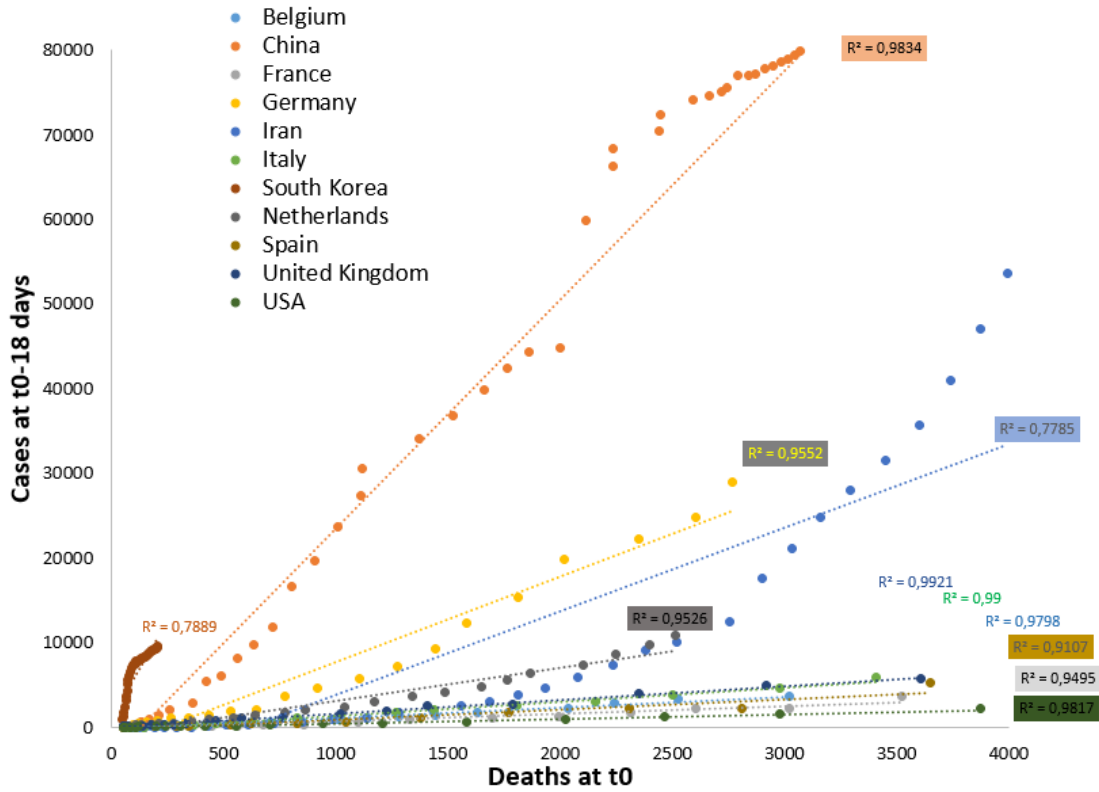
7

1

Country	Population (million)	Reported cases at $t_0$ (April 10) ( $C_{t_0}$ )	Reported deaths at $t_0$ (April 10) ( $F_{t_0}$ )	Reported cases at $t_{0-18d}$ (March 23) ( $C_{t_{0-18d}}$ )	Method 1&2	Method 1 Progression rate from actual cases		Method 2 Estimation from 3-days rate of change					
					Estimated cases at $t_{0-18d}$ (March 23) $C_{(est-18d)}$	Progression rate from $t_{-18}$ to $t_0$ $P_{18d} = C_{t_0} / C_{t_{0-18d}}$ (April 10) $P_{18d}$	Estimated Cases (April 10) $C_{t_0-estimated}$	$R_{3d-18j}$ (April 10) $C_{t_0-estimated}$	$R_0$ (April 10) $C_{t_0-estimated}$	Estimated cases (April 10) $C_{t_0-estimated}$	Estimated cases (April 10) $C_{t_0-estimated}$	Estimated cases (April 10) $C_{t_0-estimated}$	Estimated cases (April 10) $C_{t_0-estimated}$
Delay							$t_{0-18d}$	$t_{0-18d}$	$t_{0-18d}$	$t_{0-18d}$	$t_{0-18d}$	$t_{0-18d}$	$t_{0-12d}$
$M_{r-est}$							2%	2%	2%	2%	4%	15%	2%
Belgium	11,476	26 667	3019	3 743	150 950	7,12	1 075 443	0,48	2,86	1 609 257	804 628	214 568	683 894
China	1,384,688	82 941	3340	81 498	167 000	1,02	169 957	0,00	1,00	168 508	84 254	22 468	168 003
France	67,795	124 869	13197	19 856	659 850	6,29	4 149 618	0,28	1,95	2 872 097	1 436 049	382 946	1 645 302
Germany	83,073	122 171	2767	29 056	138 350	4,20	581 717	0,37	2,35	924 892	462 446	123 319	482 669
Iran	82,022	68 192	4232	23 049	211 600	2,96	626 033	0,09	1,28	360 726	180 363	48 097	294 241
Italy	60,360	147 577	18849	63 927	942 450	2,31	2 175 668	0,10	1,31	1 674 559	837 279	223 275	1 364 771
South-Korea	51,709	10 450	208	8 961	10 400	1,17	12 128	0,08	1,25	16 811	8 406	2 242	14 306
Netherlands	17,282	23 097	2511	4 749	125 550	4,86	610 619	0,20	1,64	365 882	182 941	48 784	240 570
Spain	46,935	158 273	16081	35 136	804 050	4,50	3 621 909	0,14	1,46	1 811 469	905 735	241 529	1 345 788
United Kingdom	65,761	73 758	8958	6 650	447 900	11,09	4 967 851	0,45	2,72	4 240 198	2 120 099	565 360	2 041 524
USA	328,240	496 535	18586	43 847	929 300	11,32	10 523 638	0,46	2,75	9 035 229	4 517 615	1 204 697	4 086 903

2

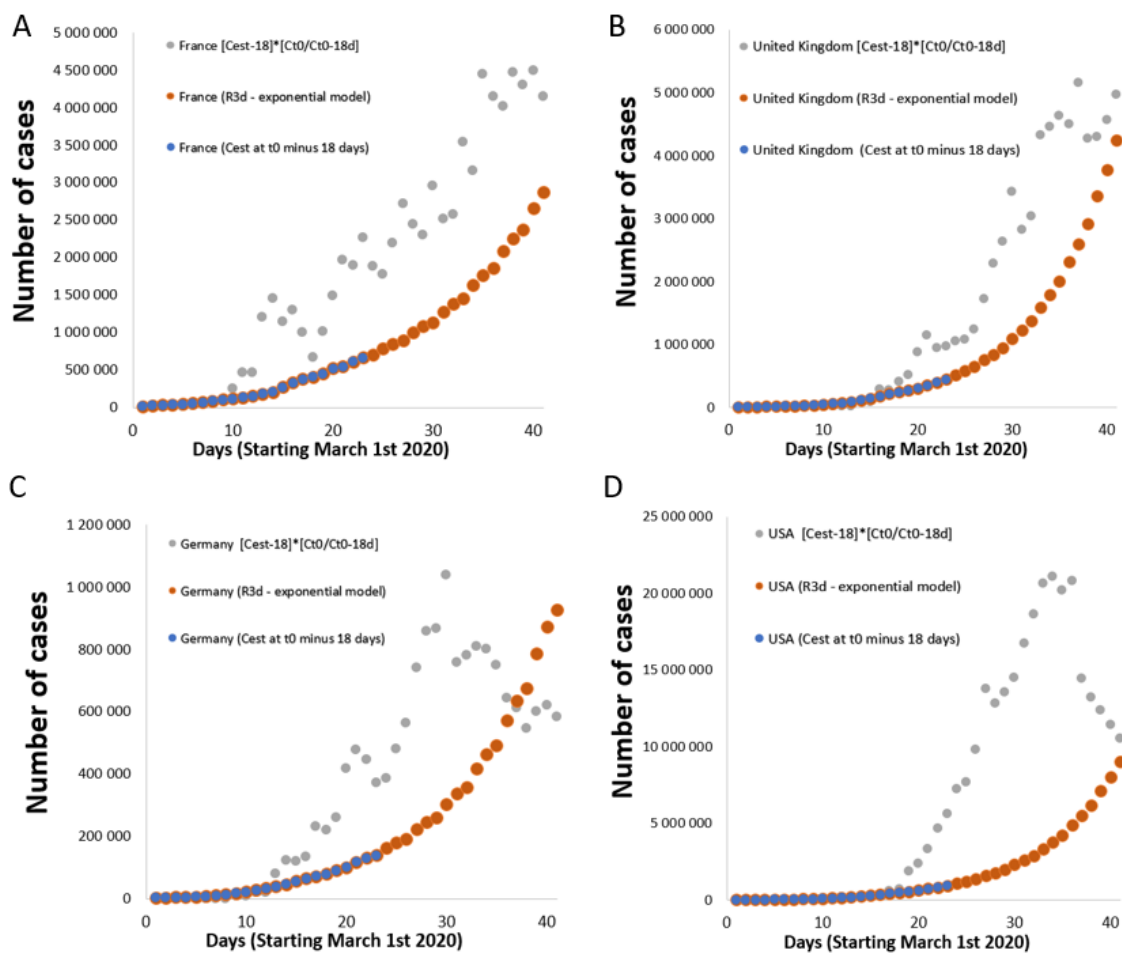
3 Table II: Estimation of the number of cases in different countries April 10<sup>st</sup> ( $t_0$ ) using different methods and an estimated Fatality rate ( $F_{r-est}$ ) of 2%. Numbers  
4 of cases estimated with different methods are provided using delays of 18 or 12 days between symptom occurrence and death.



1

2 *Figure 1: Relationships between deaths a given day ( $t_0$ ) and the number of cases eighteen*  
 3 *days before ( $t_{0-18days}$ ) in different countries. The figure includes only values between 50 and 4*  
 4 *000 deaths (or less if the number of deaths was lower in the country April 10<sup>th</sup>).*

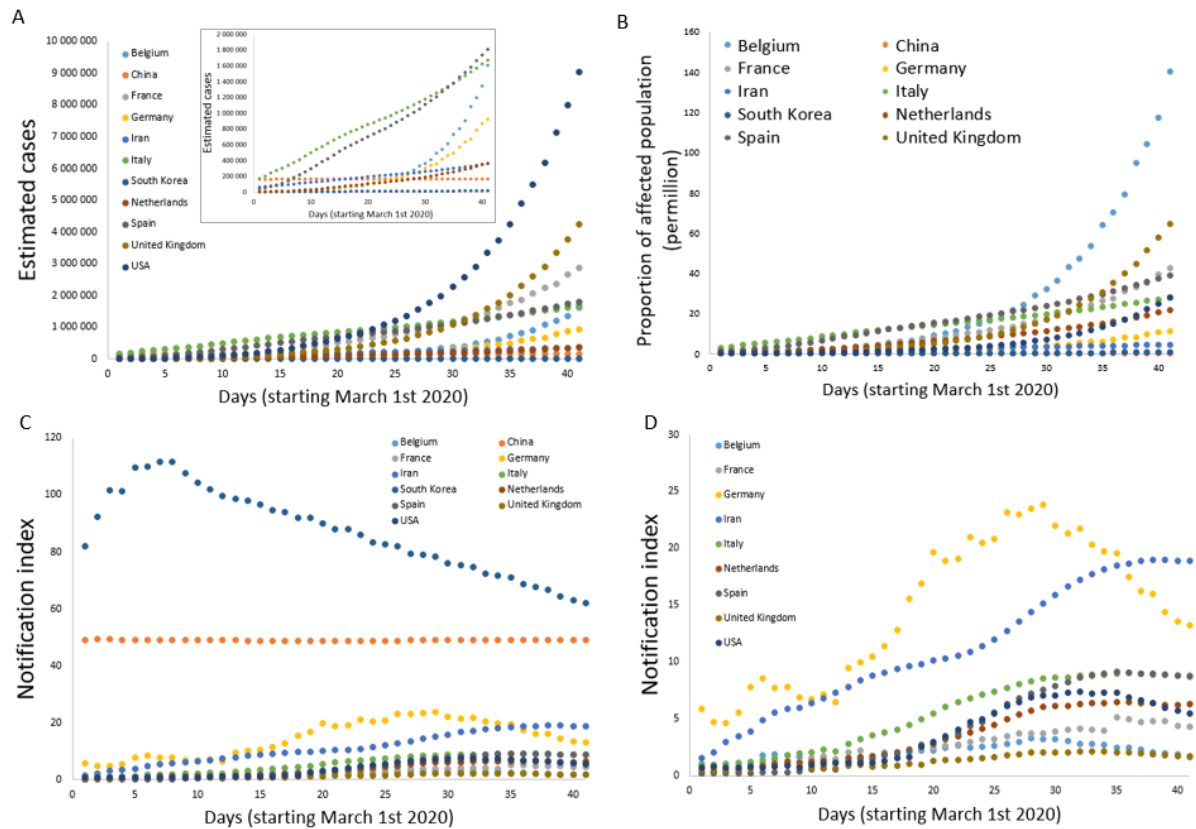
5



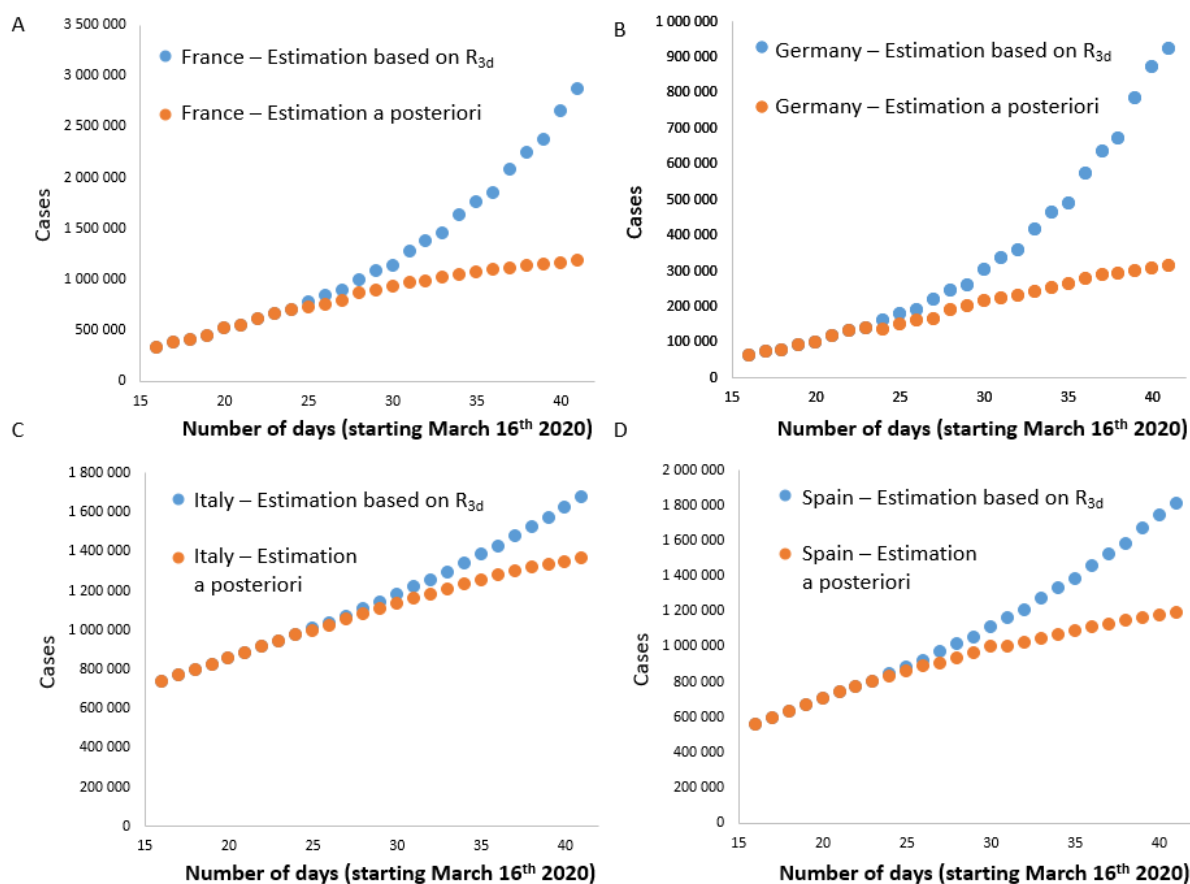
1  
 2 *Figure 2: Comparison of evolution of estimated Covid-19 cases in France (A), United Kingdom*  
 3 *(B), Germany (C), and USA (D) from March 1<sup>st</sup> 2020 to April 10<sup>th</sup> 2020. The estimated values*  
 4 *corresponding to the number of cases estimated 18 days before  $t_0$  ( $C_{est-18d}$ ), based on the number*  
 5 *of deaths at  $t_0$  are displayed in blue. The progression of these cases, taking into account a*  
 6 *multiplying factor ( $P_{18d}$ ) which reflects the increase over time in the number of cases declared*  
 7 *during the same period is noted in gray. This calculation method leads to a large number of*  
 8 *cases and to daily variations. The orange marks correspond to a model based on  $R_{3d}$  ( $(1 + C_{est-}$*   
 9  *$3d) * R_{3d}$ ). It provides curves which follow the values corresponding to  $C_{est}$  based on fatalities*  
 10 *estimated 18 days before a given day (blue marks).*

11  
 12  
 13





1  
 2 **Fig. 3.** Comparison of estimated cases and related parameters in different countries. A.  
 3 estimated cases in different countries. B. Proportion of affected person compared to the  
 4 country population. C-D. Notifications indexes reflecting the number of cases reported by  
 5 different countries compared to the estimated number of cases (percentages).  
 6



1  
2 **Fig. 4.** Comparison of cases estimated in different countries from day 16 (March 16<sup>th</sup>) using a  
3 method based on fatality rates reported from March 16 to April 10 with an estimate based on  
4  $R_{3d}$  (blue). Results of an a posteriori method following the fatality rates reported from April 3  
5 to April 28 are shown in orange.