

1 **Human monoclonal antibodies block the binding of SARS-CoV-2 spike protein**  
2 **to angiotensin converting enzyme 2 receptor**

3

4 Xiangyu Chen<sup>1,11</sup>, Ren Li<sup>2,3,11</sup>, Zhiwei Pan<sup>1,11</sup>, Chunfang Qian<sup>4,11</sup>, Yang Yang<sup>1</sup>, Renrong  
5 You<sup>5</sup>, Jing Zhao<sup>6</sup>, Pinghuang Liu<sup>5</sup>, Leiqiong Gao<sup>1</sup>, Zhirong Li<sup>1</sup>, Qizhao Huang<sup>7</sup>, Lifan  
6 Xu<sup>1</sup>, Jianfang Tang<sup>1</sup>, Qin Tian<sup>1</sup>, Wei Yao<sup>1</sup>, Li Hu<sup>1</sup>, Xiaofeng Yan<sup>4</sup>, Xinyuan Zhou<sup>1</sup>,  
7 Yuzhang Wu<sup>1</sup>, Kai Deng<sup>8</sup>, Zheng Zhang<sup>9</sup>, Zhaohui Qian<sup>10,12</sup>, Yaokai Chen<sup>4,12</sup> & Lilin  
8 Ye<sup>1,12</sup>

9

10 <sup>1</sup>Institute of Immunology, PLA, Third Military Medical University, Chongqing 400038,  
11 China

12 <sup>2</sup>State Key Laboratory of Veterinary Biotechnology, Harbin Veterinary Research  
13 Institute, Chinese Academy of Agricultural Sciences, Harbin, Heilongjiang 150001,  
14 China

15 <sup>3</sup>College of Veterinary Medicine, Northeast Agricultural University, Harbin Heilongjiang,  
16 150030, China

17 <sup>4</sup>Chongqing Public Health Medical Center, Chongqing 400038, China

18 <sup>5</sup>Comparative Immunology Research Center, College of Veterinary Medicine, China  
19 Agricultural University, Beijing 100193, China

20 <sup>6</sup>Biomedical Analysis Center, Third Military Medical University, Chongqing 400038,  
21 China

22 <sup>7</sup>Cancer Center, The General Hospital of Western Theater Command, Chengdu,  
23 Sichuan 610083, China

24 <sup>8</sup>Institute of Human Virology, Zhongshan School of Medicine, Sun Yat-sen University,  
25 Guangzhou, Guangdong 510080, China

26 <sup>9</sup>Institute for Hepatology, National Clinical Research Center for Infectious Disease,  
27 Shenzhen Third People's Hospital, Shenzhen, Guangdong 518112, China

28 <sup>10</sup>NHC Key laboratory of Systems Biology of Pathogens, Institute of Pathogen Biology,

29 <sup>11</sup>Chinese Academy of Medical Sciences and Peking Union Medical College, Beijing

30 100176, China

31 <sup>11</sup>These authors contributed equally to this work

32 <sup>12</sup>Corresponding authors: Zhaohui Qian (zqian2013@sina.com), Yaokai Chen  
33 (yaokaichen@hotmail.com) and Lilin Ye (yelilinlcmv@tmmu.edu.cn)

34 **Abstract**

35 The severe acute respiratory syndrome coronavirus 2 (SARS-CoV-2) has caused a  
36 global pandemic of novel corona virus disease (COVID-19). To date, no prophylactic  
37 vaccines or approved therapeutic agents are available for preventing and treating this  
38 highly transmittable disease. Here we report two monoclonal antibodies (mAbs)  
39 cloned from memory B cells of patients recently recovered from COVID-19, and both  
40 mAbs specifically bind to the spike (S) protein of SARS-CoV-2, block the binding of  
41 receptor binding domain (RBD) of SARS-CoV-2 to human angiotensin converting  
42 enzyme 2 (hACE2), and effectively neutralize S protein-pseudotyped virus infection.  
43 These human mAbs hold the promise for the prevention and treatment of the ongoing  
44 pandemic of COVID-19.

45

46 **Main text**

47 According to World Health Organization (WHO) newly updated situation report on  
48 March 18<sup>th</sup>, 2020, the corona virus disease 2019 (COVID-19) pandemic has  
49 confirmed 191,127 cases and claimed 7,807 deaths worldwide<sup>1</sup>. The etiological agent  
50 of COVID-19 has been identified as a novel coronavirus, the severe acute respiratory  
51 syndrome coronavirus 2 (SARS-CoV-2), belonging to *Sarbecovirus* subgenus (genus  
52 *Betacoronavirus*, family *Coronaviridae*) and showing 79.6% and 96.2% sequence  
53 identity in nucleotide to SARS-CoV and a bat coronavirus (BatCoV RaTG13),  
54 respectively<sup>2-4</sup>. Like SARS-CoV infection, a substantial fraction of COVID-19 patients  
55 exhibits severe respiratory symptoms and has to be hospitalized in intensive care unit  
56 (ICU)<sup>5-8</sup>. Although the mortality rate of COVID-19 is significantly lower than that of  
57 SARS-CoV infection, SARS-CoV-2 shows much higher human-to-human  
58 transmission rate, rapidly leading to a global pandemic declared by WHO on March  
59 11<sup>th</sup>, 2020<sup>9</sup>.

60 Currently, there are no approved prophylactic vaccines or therapeutic drugs that are  
61 specific to COVID-19. Blocking monoclonal antibodies (mAbs), due to their  
62 extraordinary antigen specificity, are one of the best candidates for neutralizing virus  
63 infection<sup>10, 11</sup>. Therefore, identifying and cloning blocking mAbs that can specifically  
64 target surface viral proteins to block the viral entry to host cells is a very attractive  
65 approach for preventing and treating COVID-19, in particular when effective vaccines  
66 and therapeutics are unavailable in the outbreak of the COVID-19 pandemic. We then  
67 sought to identify and clone blocking mAbs from the memory B cell repertoire of  
68 recently recovered COVID-19 patients to prevent the entry of COVID-19 virus to the  
69 host cells.

70 Similar to SARS-CoV, SARS-CoV-2 also utilizes highly glycosylated homotrimeric  
71 spike (S) protein for receptor binding and virus entry<sup>3, 12-15</sup>. The S protein of  
72 SARS-CoV-2 consists of two subunits, S1 and S2. To engage host cell receptor

73 human angiotensin-converting enzyme 2 (hACE2), shared by both SARS-CoV and  
74 SARS-CoV-2, S protein undergoes dramatic conformational changes to expose the  
75 RBD and key residues for receptor binding. S protein is metastable, and binding of  
76 RBD to hACE2 receptor likely leads to the shedding of S1 protein from S2 protein,  
77 thus promoting S2-mediated virus-host membrane fusion and virus entry<sup>16-18</sup>. Given  
78 the critical role of the RBD in initiating invasion of SARS-CoV-2 into host cells, it  
79 becomes a vulnerable target for neutralizing antibodies. Thus far, the human mAbs  
80 specifically target the SARS-CoV-2 RBD-hACE2 interaction have not been reported,  
81 and a monoclonal antibody targeting S1 made from immunized transgenic mice  
82 expressing human Ig variable heavy and light chains has been recently shown to  
83 neutralize both SARS-CoV-2 and SARS-CoV infection, but by an unknown  
84 mechanism that is independent of the blockade of RBD-hACE2 interaction<sup>19</sup>.

85 Prior to cloning SARS-CoV-2 RBD specific human mAbs, we first examined whether  
86 patients recently recovered from COVID-19 had mounted anti-SARS-CoV-2 S1  
87 protein IgG antibodies in sera. Among 26 recovered COVID-19 patients, we found  
88 that the majority of these recruited patients were able to produce high titers of  
89 SARS-CoV-2 S1-specific IgG antibodies and only 3 patients mounted relatively lower  
90 anti-S1 IgG responses, by enzyme-linked immunosorbent assay (ELISA) (Fig. 1a).  
91 Consistently, we also found that SARS-CoV-2 RBD specific IgG antibodies were  
92 present in sera of all patients by ELISA (Fig. 1b). Next, we sought to investigate  
93 whether RBD-specific antibodies in patient serum can block the binding of  
94 SARS-CoV-2 RBD to hACE2. To this end, we set up an ELISA-based inhibition assay  
95 to examine the blocking function of these antibodies. We noted that there were only 3  
96 out of 26 patients showed effective blockade of SARS-CoV-2 RBD binding to hACE2  
97 (Fig. 1c). Taken together, these results suggested that while all recovered COVID-19  
98 patients can generate anti-S1 and anti-RBD antibodies, there were only a small  
99 fraction of these antibodies can block the binding of RBD to hACE2 receptor. This  
100 observation may be explained by transient and dynamic perfusion conformational

101 states of S protein that provide very limited window for the immunogenic epitopes of  
102 RBD exposure to specific B cells<sup>20</sup>.

103 Next, we set out to clone human monoclonal antibodies using the blood samples from  
104 three COVID-19 recovered patients, of which their sera showed potent hACE2  
105 receptor binding inhibition. To this end, we sorted each SARS-CoV-2 RBD specific,  
106 IgG class-switched memory B cell into a single well of the 96-well microplates.  
107 Subsequently, we used reverse transcription polymerase chain reaction (RT-PCR) to  
108 amplify IgG variable heavy chain (VH) and light chain (VL) from each single memory B  
109 cell. After cloning both VH and VL, we inserted both sequences into expression  
110 plasmids that encoding constant regions of human IgG1 heavy chain and light chain  
111 (Fig. 2a)<sup>21</sup>. We found that SARS-CoV-2 RBD specific, IgG-positive memory B cells  
112 only enriched in COVID-19 recovered patients, but not in healthy controls (Fig. 2b),  
113 suggesting the specificity of our sorting strategy. The representative RT-PCR and  
114 cloning of IgG1 heavy chains and light chains to expression plasmids were shown in  
115 Figure 2c and 2d. After antibody cloning, we acquired 3 pairs of IgG VHs and VLs  
116 inserted expression plasmids and the CDR3 sequences of heavy chains were shown  
117 in Figure 2e (analyzed with IMGT browser,  
118 [http://www.imgt.org/IMGT\\_vquest/analysis#sequence1\\_alj](http://www.imgt.org/IMGT_vquest/analysis#sequence1_alj)).

119 Finally, we expressed these paired plasmids encoding IgG VH and VL sequences and  
120 named these three mAbs as 311mab-31B5, 311mab-32D4 and 311mab-31B9,  
121 respectively. We first examined whether these human mAbs were able to bind to  
122 SARS-CoV-2 RBD protein by ELISA. The results showed that all three mAbs strongly  
123 and specifically bind to the RBD protein (Fig. 3a). Next, we tested whether these  
124 mAbs can block the interaction between SARS-CoV-2 RBD and hACE2. We found  
125 that both 311mab-31B5 and 311mab-32D4 could efficiently block SARS-CoV-2  
126 RBD-hACE2 interaction ( $IC_{50}$ =0.0332, and 0.0450  $\mu$ g/ml, respectively), while  
127 311mab-31B9 clone failed to inhibit such an interaction (Fig. 3b). The 31B5- and

128 32D4-mediated inhibition of RBD-hACE2 interaction was also evidenced by flow  
129 cytometry analysis (Fig. 3c-e). Furthermore, we determined the neutralization of these  
130 three mAbs using a SARS-CoV-2 S pseudotyped lentiviral particle<sup>22</sup>. In line with  
131 ELISA- and flow cytometry-based blockade results, both 311mab-31B5 and  
132 311mab-32D4 effectively neutralized pseudovirus entry to host cells ectopically  
133 expressing hACE2 (IC<sub>50</sub>=0.0338, and 0.0698 µg/ml, respectively). As expected,  
134 311mab-31B9 clone failed to show any neutralization activities (Fig. 3f).

135 In conclusion, we have successfully cloned two human blocking mAbs using  
136 SARS-CoV-2 RBD-specific memory B cells isolated from recovered COVID-19  
137 patients. These two mAbs can specifically bind to SARS-CoV-2 RBD, block the  
138 interaction between SARS-CoV-2 RBD and hACE2 receptor, and lead to efficient  
139 neutralization of SARS-CoV-2 S protein pseudotyped virus infection. Such human  
140 anti-SARS-CoV-2 RBD-hACE2 blocking mAbs hold great promise to be exploited as  
141 specific prophylactic and therapeutic agents against ongoing SARS-CoV-2 pandemic.

142

#### 143 **Acknowledgement**

144 We thank Dr. Jun Huang (University of Chicago) for discussion. This work was  
145 supported by grants from the National Natural Science Fund for Distinguished Young  
146 Scholars (No. 31825011 to L.Y.) and the Chongqing Special Research Project for  
147 Novel Coronavirus Pneumonia Prevention and Control (No. cstc2020jscx-2 to L.Y.; No.  
148 cstc2020jscx-fyzx0074 to Y.C.; cstc2020jscx-fyzx0135 to Y.C.).

149

#### 150 **Author contributions**

151 X.C., R.L., Z.P., Q.C., Y.Y., R.Y., J.Z., L.G., Z.L, Q.H., L.X., J.T., Q.T., W.Y., L.H., and  
152 X.Y. performed the experiments. L.Y. designed the study, analyzed the data and

153 wrote the paper with X.C., R.L., P.L., Y.C., Z.Q., X.Z., Y.W., K.D. and Z.Z.; and L.Y.,

154 Y.K. and Z.Q. supervised the study.

155

156 **Competing interests**

157 The authors declare no competing interests.

158



159 **Materials and methods**

160

161 **Human samples.** The 26 COVID-19 patients enrolled in the study were provided  
162 written informed consent. Prior to blood collection, the patients were clinically  
163 recovered and tested negative qPCR for SARS-CoV-2 virus RNA. Healthy control  
164 subjects were 2 adult participants in the study. The study received IRB approval at  
165 Chongqing Public Health Medical Center (2020-023-01-KY).

166

167 **PBMC and serum collection.** Blood samples were collected in cell preparation tubes  
168 with or without sodium citrate (BD Bioscience). PBMCs were isolated from blood in  
169 sodium citrate tubes using Ficoll (TBD Science), washed with PBS plus 2% FBS,  
170 suspended in cell freezing medium (90% FBS plus 10% DMSO), frozen in freezing  
171 chamber first at -80°C, and then transferred to liquid nitrogen. Sera were collected  
172 from blood without sodium citrate treatment and stored in aliquots at -80°C.

173

174 **Single-cell sorting by flow cytometry.** For B cell enrichment, PBMCs were firstly  
175 stained with FITC-conjugated anti-CD19 antibody (Biolegend) on ice for 30 min. Then,  
176 FITC-CD19 stained PBMCs were enriched using anti-FITC MicroBeads (Miltenyi  
177 Biotec) by following manufacturer's protocol. For surface staining, the enriched CD19<sup>+</sup>  
178 B cells were stained with biotin-conjugated SARS-CoV-2 RBD protein (Sino Biological,  
179 40592-V05H) at 4°C for 20 min, followed by PE-Cy7-conjugated streptavidin  
180 (eBioscience), PE-conjugated anti-CD20 antibody (Biolegend), APC-conjugated  
181 anti-human IgG (Fc) (Biolegend), APC-Cy7-conjugated anti-CD3 antibody (Biolegend),  
182 APC-Cy7-conjugated anti-CD14 antibody (Biolegend), APC-Cy7-conjugated  
183 anti-CD56 antibody (Biolegend) and APC-Cy7-conjugated LIVE/DEAD dye (Life  
184 Technologies). Cell staining was performed in PBS containing 5% mouse serum  
185 (wt/vol). For cell sorting, the stained SARS-CoV-2 RBD-specific IgG<sup>+</sup> B cells were  
186 single-cell sorted into 96-well plates loaded with 10 µl catch buffer and then stored at

187 -80°C. Catch buffer: to 1 ml of RNAase-free water (Tiangen Biotech), add 50 µl 1.5 M  
188 Tris pH 8.8 (Beijing Dingguo Changsheng Biotech) and 40 µl Rnasin (NEB).

189

190 **RT-PCR and PCR cloning.** The heavy and light chain genes were PCR amplified as  
191 previously described<sup>21</sup>. Briefly, single-cell sorted plates were thawed on ice and added  
192 with 15 µl RT-PCR master mix following the one step RT-PCR kit protocol (Takara,  
193 RR057A) with primers for IgG VH and IgG VL. RT-PCR program: 50°C for 30 min,  
194 94°C for 2 min, 45 cycles of 94°C for 30 sec, 57°C for 30 sec and 72°C for 1 min. Then,  
195 RT-PCR products were nested PCR-amplified with nested PCR master mix following  
196 the HS DNA polymerase kit protocol (Takara, TAK R010) with primers for IgG VH or  
197 IgG VL. Nested PCR program: 98°C for 4 min, 45 cycles of 98°C for 1 min, 57°C for 1  
198 min and 72°C for 1 min. Next, heavy and light chain PCR products were purified and  
199 nuclease digested with Age1-HF/Sal1-HF (NEB) and Age1-HF/BsiW1-HF (NEB),  
200 respectively. The digested heavy and light chain genes were further cloned into  
201 human IgG1 heavy chain and light chain expression vectors, respectively.

202

203 **Transfection.** Human embryonic kidney (HEK) 293T cells of 80-90% confluent in the  
204 15 cm tissue culture plate were transfected with master mixture containing 9 µg heavy  
205 chain plasmid, 9 µg light chain plasmid and 60 µl *TransIT*-293 Transfection reagent  
206 (Mirus). The culture media was changed to basal media 24 hours-post transfection.  
207 Then, the culture media was collected from the plate 2 days later.

208

209 **ELISA.** 50 ng of SARS-CoV-2 S1 protein (Sino Biological, 40591-V08H) or  
210 SARS-Cov2 RBD protein (Sino Biological, 40592-V08B) in 100 µl PBS per well was  
211 coated on ELISA plates overnight at 4°C. Then, the ELISA plates were blocked for 1  
212 hour with blocking buffer (5% FBS plus 0.05% Tween 20). Next, mAbs or ten-fold  
213 diluted patient sera were added to each well in 100 µl blocking buffer for 1 hour. After  
214 washing with PBST, the bound antibodies were incubated with anti-human IgG HRP

215 detection antibody (Bioss Biotech) for 30 min, followed by washed with PBST, then  
216 PBS and addition of TMB (Beyotime). The ELISA plates were allowed to react for 5  
217 min and then stopped by 1 M HCl stop buffer. The optical density (OD) value was  
218 determined at 450 nm.

219

220 **ELISA-based receptor-binding inhibition assay.** 200 ng of hACE2 protein (Sino  
221 Biological, 10108-H08H) in 100  $\mu$ l PBS per well was coated on ELISA plates overnight  
222 at 4°C. Then, the ELISA plates were blocked for 1 hour with blocking buffer (5% FBS  
223 plus 0.05% Tween 20); meanwhile, three-fold serial dilutions of mAbs or ten-fold  
224 diluted patient sera were incubated with optimal dose (based on EC<sub>50</sub>) of SARS-Cov2  
225 RBD protein (Sino Biological, 40592-V05H) for 1 hour. Then, the incubated mixtures  
226 were added to ELISA plates and allowed to develop for 30 min, followed by PBST  
227 washing and anti-mouse Fc HRP antibody (Thermo Fisher Scientific). Next, the ELISA  
228 plates were washed with PBST, then PBS and added with TMB (Beyotime). After 5  
229 min, the ELISA plates were stopped and determined at 450 nm. The half maximal  
230 inhibitory concentration (IC<sub>50</sub>) was determined by using 4-parameter logistic  
231 regression.

232

233 **Flow cytometry-based receptor-binding inhibition assay.** 311mab mAbs or  
234 isotype were incubated with optimal dose (based on EC<sub>50</sub>) of SARS-Cov2 RBD  
235 protein (Sino Biological, 40592-V05H) for 1 hour at RT. Then, the mixtures were  
236 incubated with 10,000 hACE2-plasmid transiently transfected 293T cells for 40 min on  
237 ice, followed by stained with Alexa Fluor 647-conjugated goat anti-mouse IgG  
238 (Biolegend) and APC-Cy7-conjugated LIVE/DEAD dye (Life Technologies).

239

240 **Pseudovirus neutralization assay.** Spike protein of SARS-Cov-2 typed pseudovirus  
241 was produced as previously described<sup>22</sup>. Concisely, HEK-293T cells were transfected  
242 with psPAX2, pLenti-GFP and 2019-nCov S plasmids by using *TransIT-293*

243 Transfection reagent (Mirus). The culture media was changed to fresh media 12  
244 hours-post transfection. And at 64 hours after transfection, supernatants were  
245 harvested. For pseudovirus neutralization assay, three-fold serially diluted mAbs were  
246 mixed with SARS-Cov-2 typed pseudovirus for 1 hour. Then, the mixture was  
247 incubated with hACE2-expressing HEK-293T (hACE2/293T) cells overnight, followed  
248 by change of fresh media. At 40 hours-post incubation, the luciferase activity of  
249 infected hACE2/293T cells were detected by Dual-Luciferase Reporter Assay System  
250 (Promega). The percent of infection was calculated as ratio of luciferase value with  
251 mAbs to that without mAbs. The half maximal inhibitory concentration ( $IC_{50}$ ) was  
252 determined by using 4-parameter logistic regression.  
253

254

255 **Figure legends**

256

257 **Figure 1 ELISA binding and blocking assays of COVID-19 patient sera. (a)** ELISA  
258 binding assay of COVID-19 patient sera to ELISA plate coating of SARS-CoV-2 S1  
259 protein. **(b)** ELISA binding assay of COVID-19 patient sera to ELISA plate coating of  
260 SARS-CoV-2 RBD protein. **(c)** COVID-19 patient serum-mediated inhibition of the  
261 SARS-CoV-2 S1 protein binding to hACE2 protein by ELISA. NC, negative control.  
262 HD, healthy donor.

263

264 **Figure 2 Cloning human mAbs from single SARS-Cov2 RBD-specific IgG<sup>+</sup>**  
265 **memory B cells of three recovered patients whose sera potentially blocked**  
266 **RBD-hACE2 interaction. (a)** An overall strategy of anti-SARS-CoV-2 RBD mAbs. **(b)**  
267 Flow cytometry analysis of SARS-CoV-2 RBD-specific IgG<sup>+</sup> B cells in PBMCs of  
268 healthy donor and patient XFQ. **(c)** Heavy and light Ig-chain encoding segments of  
269 SARS-CoV-2 RBD-specific IgG<sup>+</sup> B cells were amplified by single-cell RT-PCR. **(d)**  
270 Endonuclease digestion of IgG VH and VL inserts in the plasmids. **(e)** CDR3  
271 sequences of heavy chains.

272

273 **Figure 3 Characterization of mAbs against SARS-Cov2 RBD. (a)** Specificity of  
274 mAbs (311mab-31B5, -32D4 and -31B9 clones) to SARS-CoV-2 RBD protein by  
275 ELISA. **(b)** ELISA analysis of SARS-CoV-2 RBD-hACE2 interaction inhibited by  
276 311mab-31B5, -32D4 and -31B9 mAbs. **(c)** Flow cytometry analysis of SARS-CoV-2  
277 RBD-hACE2 interaction inhibited by 311mab-31B5, -32D4 and -31B9 mAbs. The  
278 numbers adjacent to the outlined areas indicate the percentages of anti-mouse IgG<sup>+</sup>  
279 hACE2-plasmid transiently transfected 293T cells, which are summarized in **(d)**. **(e)**  
280 Mean fluorescence intensity of Alexa Fluor 647 anti-mouse IgG in anti-mouse IgG<sup>+</sup>  
281 hACE2-plasmid transiently transfected 293T cells. **(f)** Antibody-mediated blocking of  
282 luciferase-encoding SARS-Cov-2 typed pseudovirus into hACE2/293T cells. The data

283 are representative of two independent experiments with three replicates per group (a,  
284 b, d-f; error bars in a, b, d-f indicate the SD).  
285  
286

287 **References**

- 288 1. *World Health Organization.*  
289 <https://www.who.int/docs/default-source/coronaviruse/situation-reports/20200>  
290 [318-sitrep-58-covid-19.pdf?sfvrsn=20876712\\_2](https://www.who.int/docs/default-source/coronaviruse/situation-reports/20200318-sitrep-58-covid-19.pdf?sfvrsn=20876712_2). 2020.
- 291 2. Wu, F., et al., *A new coronavirus associated with human respiratory disease in*  
292 *China*. *Nature*, 2020. **579**(7798): p. 265-269.
- 293 3. Zhou, P., et al., *A pneumonia outbreak associated with a new coronavirus of*  
294 *probable bat origin*. *Nature*, 2020. **579**(7798): p. 270-273.
- 295 4. Zhu, N., et al., *A Novel Coronavirus from Patients with Pneumonia in China,*  
296 *2019*. *N Engl J Med*, 2020. **382**(8): p. 727-733.
- 297 5. Huang, C., et al., *Clinical features of patients infected with 2019 novel*  
298 *coronavirus in Wuhan, China*. *Lancet*, 2020. **395**(10223): p. 497-506.
- 299 6. Wang, D., et al., *Clinical Characteristics of 138 Hospitalized Patients With*  
300 *2019 Novel Coronavirus-Infected Pneumonia in Wuhan, China*. *JAMA*, 2020.
- 301 7. Yang, X., et al., *Clinical course and outcomes of critically ill patients with*  
302 *SARS-CoV-2 pneumonia in Wuhan, China: a single-centered, retrospective,*  
303 *observational study*. *Lancet Respir Med*, 2020.
- 304 8. Chen, N., et al., *Epidemiological and clinical characteristics of 99 cases of*  
305 *2019 novel coronavirus pneumonia in Wuhan, China: a descriptive study*.  
306 *Lancet*, 2020. **395**(10223): p. 507-513.
- 307 9. *World Health Organization.*  
308 [https://www.who.int/dg/speeches/detail/who-director-general-s-opening-remar](https://www.who.int/dg/speeches/detail/who-director-general-s-opening-remarks-at-the-media-briefing-on-covid-19---11-march-2020)  
309 [ks-at-the-media-briefing-on-covid-19---11-march-2020](https://www.who.int/dg/speeches/detail/who-director-general-s-opening-remarks-at-the-media-briefing-on-covid-19---11-march-2020). 2020.
- 310 10. Marston, H.D., C.I. Paules, and A.S. Fauci, *Monoclonal Antibodies for*  
311 *Emerging Infectious Diseases - Borrowing from History*. *N Engl J Med*, 2018.  
312 **378**(16): p. 1469-1472.
- 313 11. Saylor, C., E. Dadachova, and A. Casadevall, *Monoclonal antibody-based*  
314 *therapies for microbial diseases*. *Vaccine*, 2009. **27 Suppl 6**: p. G38-46.

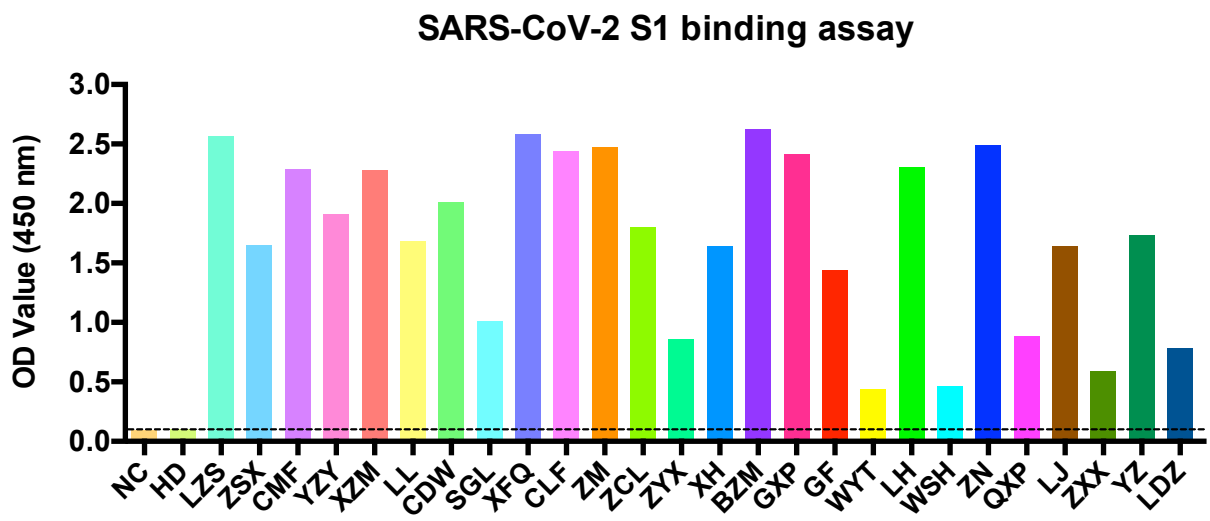
- 315 12. Jun Lan, J.G., Jinfang Yu, Sisi Shan, Huan Zhou, Shilong Fan, Qi Zhang,  
316 Xuanling Shi, Qisheng Wang, Linqi Zhang, Xinquan Wang, *Crystal structure of*  
317 *the 2019-nCoV spike receptor-binding domain bound with the ACE2 receptor.*  
318 bioRxiv, 2020. **2020.02.19.956235**; doi:  
319 <https://doi.org/10.1101/2020.02.19.956235>.
- 320 13. Li, F., *Structure, Function, and Evolution of Coronavirus Spike Proteins.* Annu  
321 Rev Virol, 2016. **3**(1): p. 237-261.
- 322 14. Li, F., et al., *Structure of SARS coronavirus spike receptor-binding domain*  
323 *complexed with receptor.* Science, 2005. **309**(5742): p. 1864-8.
- 324 15. Yan, R., et al., *Structural basis for the recognition of the SARS-CoV-2 by*  
325 *full-length human ACE2.* Science, 2020.
- 326 16. Gui, M., et al., *Cryo-electron microscopy structures of the SARS-CoV spike*  
327 *glycoprotein reveal a prerequisite conformational state for receptor binding.*  
328 Cell Res, 2017. **27**(1): p. 119-129.
- 329 17. Kirchdoerfer, R.N., et al., *Pre-fusion structure of a human coronavirus spike*  
330 *protein.* Nature, 2016. **531**(7592): p. 118-21.
- 331 18. Wrapp, D., et al., *Cryo-EM structure of the 2019-nCoV spike in the prefusion*  
332 *conformation.* Science, 2020. **367**(6483): p. 1260-1263.
- 333 19. Chunyan Wang, W.L., Dubravka Drabek, Nisreen M.A. Okba, Rien van  
334 Haperen, Albert D.M.E. Osterhaus, Frank J.M. van Kuppeveld, Bart L.  
335 Haagmans, Frank Grosveld, Berend-Jan Bosch, *A human monoclonal*  
336 *antibody blocking SARS-CoV-2 infection.* bioRxiv, 2020. **2020.03.11.987958**;  
337 doi: <https://doi.org/10.1101/2020.03.11.987958>.
- 338 20. Pallesen, J., et al., *Immunogenicity and structures of a rationally designed*  
339 *prefusion MERS-CoV spike antigen.* Proc Natl Acad Sci U S A, 2017. **114**(35):  
340 p. E7348-E7357.
- 341 21. Smith, K., et al., *Rapid generation of fully human monoclonal antibodies*  
342 *specific to a vaccinating antigen.* Nat Protoc, 2009. **4**(3): p. 372-84.



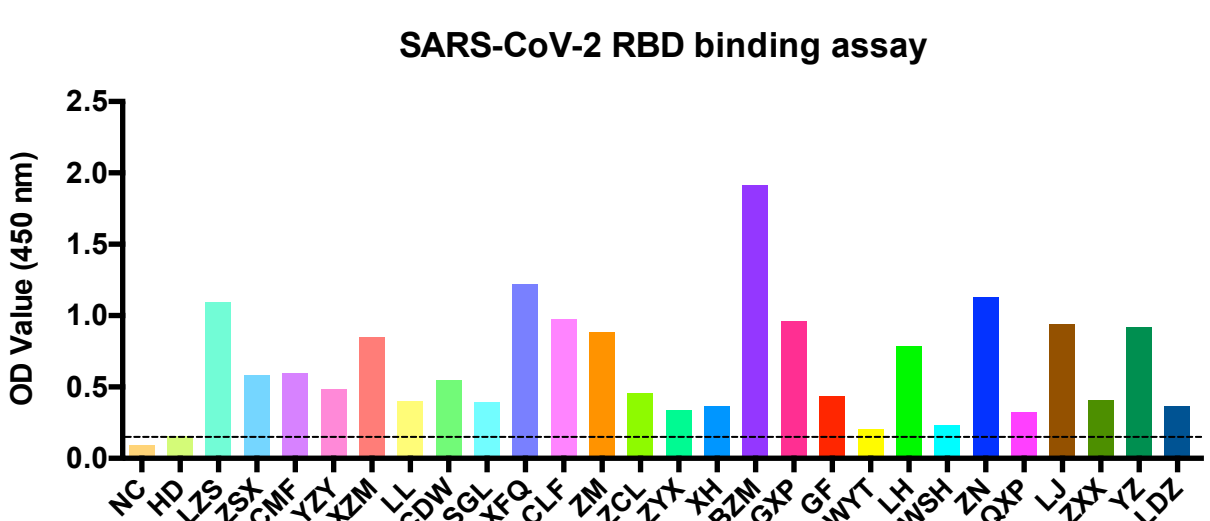
- 343 22. Xiuyuan Ou, Y.L., Xiaobo Lei, Pei Li, Dan Mi, Lili Ren, Li Guo, Ruixuan Guo,  
344 Ting Chen, Jiaying Hu, Zichun Xiang, Zhixia Mu, Xing Chen, Jieyong Chen,  
345 Keping Hu, Qi Jin, Jianwei Wang, Zhaohui Qian, *Characterization of spike*  
346 *glycoprotein of 2019- nCoV on virus entry and its immune cross- reactivity with*  
347 *spike glycoprotein of SARS-CoV*. Nature Communications, 2020.  
348 **Doi:10.21203/rs.2.24016/v1**.  
349

Figure 1

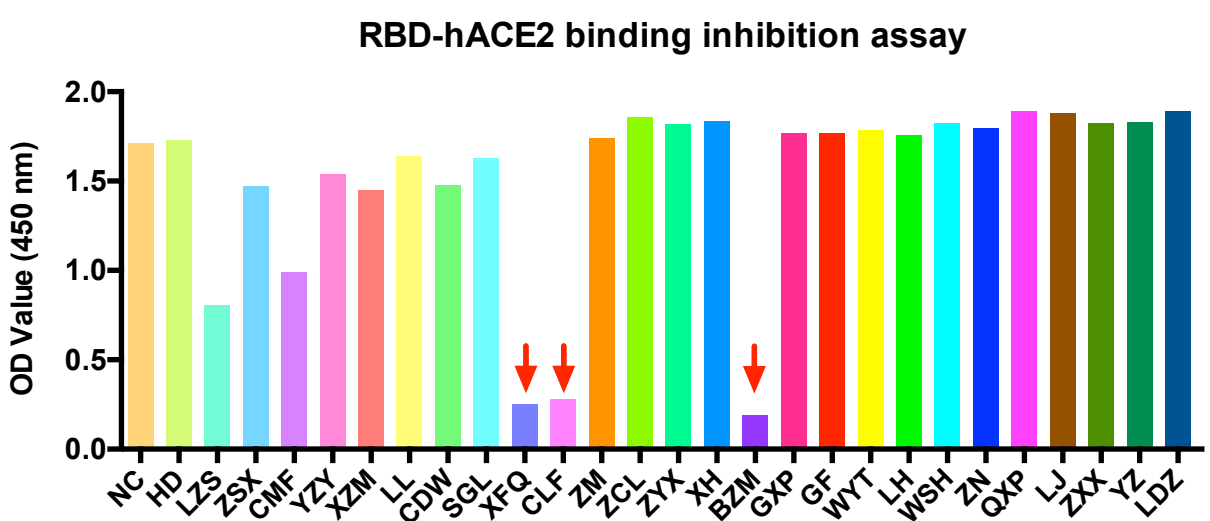
a



b

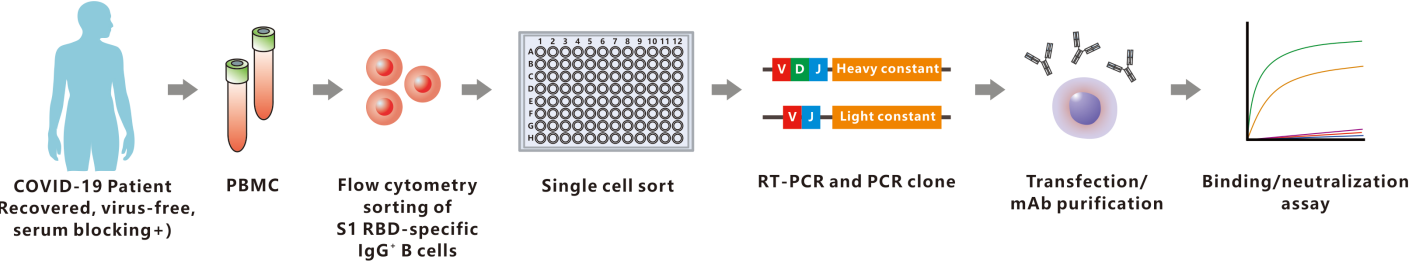


c

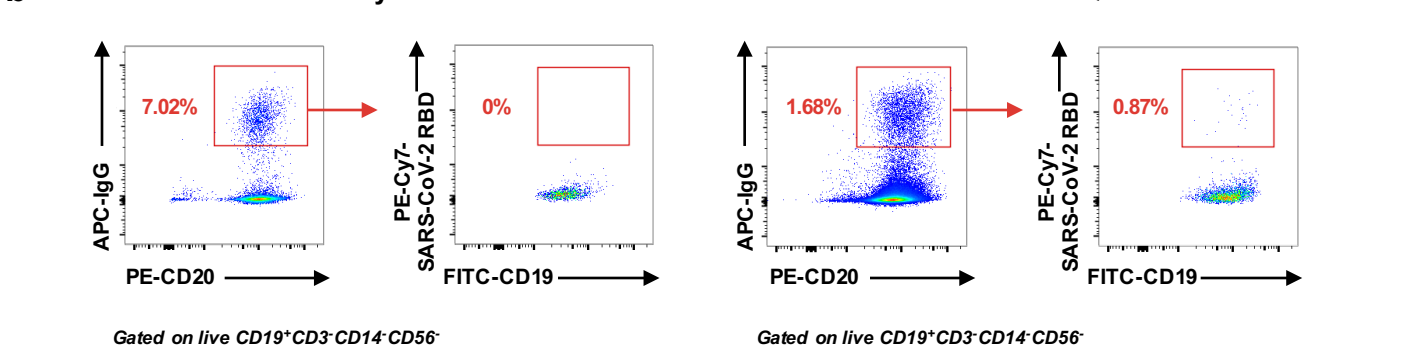


# Figure 2

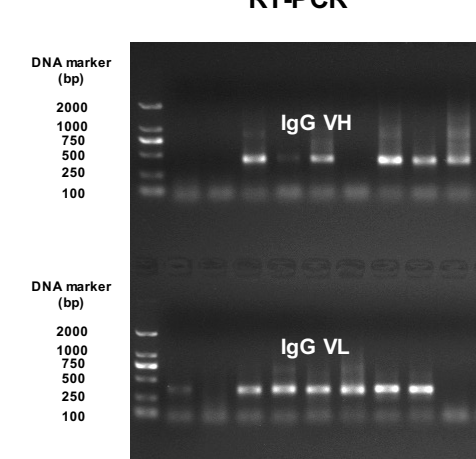
**a**



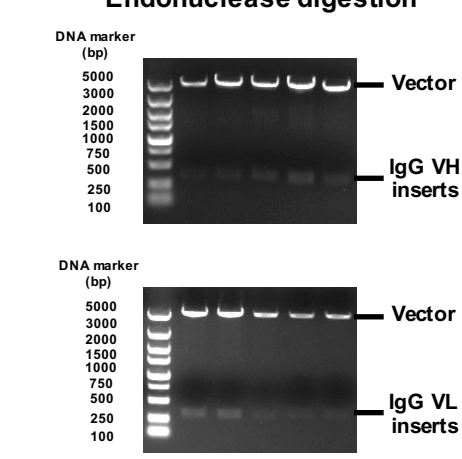
**b**



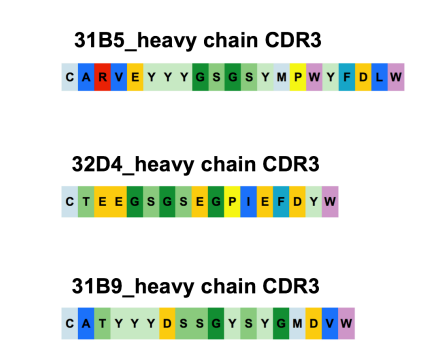
**c**



**d**



**e**



**Figure 3**

