



1 **ABSTRACT**

2 **Background:** Children with neurodevelopmental disorders such as Attention Deficit Hyperactivity  
3 Disorder (ADHD) often struggle with behavioral self-regulation (BR), which is associated with daily-  
4 life challenges. ADHD sometimes presents with Developmental Coordination Disorder (DCD), but  
5 little is known about BR in DCD. BR is thought to involve limbic, prefrontal, parietal and temporal  
6 brain areas. Given the risk for negative outcomes, gaining a better understanding of the brain  
7 mechanisms underlying BR in children with ADHD and/or DCD is imperative.

8 **Methods:** Resting-state fMRI data collected from 115 children (31 typically developing (TD), 35  
9 ADHD, 21 DCD, 28 ADHD-DCD) aged 7-17 years were preprocessed and motion was mitigated  
10 using ICA-AROMA. Emotion control, inhibition, and shifting were assessed as subdomains of BR.  
11 Functional connectivity (FC) maps were computed for ten limbic, prefrontal, parietal and temporal  
12 regions of interest and were investigated for associations with BR subdomains across all participants  
13 as well as for significant group differences.

14 **Results:** Multiple FC patterns were associated with BR across all participants. Some FC patterns  
15 were associated with multiple BR subdomains, while others were associated with only one.  
16 Differences in BR were found only between children with ADHD (i.e. ADHD and ADHD-DCD) and  
17 those without ADHD (i.e. TD and DCD). FC differences were also found between children with and  
18 without ADHD.

19 **Conclusions:** Our results show dimensional associations between BR subdomain scores and whole-  
20 brain FC and highlight the potential of these associative patterns as brain-based signatures of BR in  
21 children with and without ADHD.

22 **Keywords:** behavioral self-regulation, shifting, cognitive flexibility, inhibition, emotion control

## 1 **1 INTRODUCTION**

2 Many children with neurodevelopmental disorders (NDDs) such as Attention Deficit Hyperactivity  
3 Disorder (ADHD) experience difficulty in regulating their emotional behaviors (1, 2). Children with  
4 NDDs may be sensitive to external affective cues, making it hard for them to ignore distractions and  
5 follow instructions given by teachers or parents (3-5). They may also display frequent and intense  
6 shifts in emotions, and have trouble recovering from negative events (3). This struggle with  
7 behavioral self-regulation (BR) not only impacts children's social relationships and performance at  
8 school, but also results in greater daily-life and mental health challenges overall (6, 7). Evidence of  
9 treatment success with medication is limited (8), and many clinical trials have failed to address BR  
10 difficulties in children with ADHD (1, 2). Yet, up to 50% may have difficulty in regulating their  
11 emotions and display high levels of emotional lability (9-11).

12  
13 A subset of children with ADHD also present with Developmental Coordination Disorder (DCD), a  
14 NDD that is characterized by impaired motor coordination that significantly interferes with activities  
15 of daily living and impacts school performance and activities, as well as leisure and play (12). While  
16 very little research has been conducted into BR in DCD to date, a handful of recent studies indicate  
17 that problems with BR may exist for children with DCD as well (13-16).

18  
19 BR can be broken down into inhibitory control, cognitive flexibility and emotion control processes.  
20 Inhibitory control is the ability to suppress interfering distractions and prepotent motor responses (4,  
21 17, 18). Cognitive flexibility, which is often measured using set-shifting, is the readiness with which  
22 one can switch from one task or mindset to another (4, 19, 20). Finally, emotion control is the process

1 by which we influence the emotions we experience, when we experience them, and how we  
2 experience and express them (21, 22).

3  
4 The neural substrates of BR have been extensively studied in neurotypical adults (23) and adults with  
5 affective disorders (24), but less is known about the neural expression of BR subdomains in children  
6 and children with NDDs (25, 26). The neural signatures of ADHD as a whole have been elusive due  
7 to heterogeneity in the condition, suggesting that looking across the spectrum and range of expression  
8 of specific features may be more promising (27-29). Task-based fMRI studies of BR have  
9 traditionally focused on areas in the prefrontal cortex (PFC), including orbitofrontal cortex (OFC) and  
10 the anterior cingulate cortex (ACC), as well as limbic areas such as the amygdala and nucleus  
11 accumbens (NAcc), but more recent reviews and frameworks also implicate regions in parietal and  
12 temporal cortex such as the inferior parietal lobule (IPL) and temporal pole (TP) (21, 30, 31).  
13 Considering the widespread repercussions suboptimal BR can have throughout childhood and into  
14 adulthood, characterization of the interactions between these areas within the brain or their whole-  
15 brain functional connectivity (FC) has enormous potential for diagnosis and individually tailored  
16 treatment of BR difficulties in NDDs (1).

17  
18 Distributed FC patterns (i.e. patterns spanning across much of the brain) have previously been  
19 associated with the core ADHD symptoms of inattention and hyperactivity (32, 33), but less is known  
20 about distributed FC in relation to BR and other symptomatic behaviors that undergo maturation in  
21 NDDs. In particular, comprehensive whole-brain FC signatures (i.e. conglomerates of distributed FC  
22 patterns) that define aspects of BR, are not well studied, despite the widespread repercussions of

1 suboptimal BR for children that persist into adulthood, and the enormous potential of whole-brain FC  
2 profiles as ‘neuromarkers’ for diagnosis and individually tailored treatment.

3

4 In this study, we therefore sought to provide a more comprehensive picture into whole-brain FC  
5 signatures associated with different subdomains of BR. We choose seed regions of interest that  
6 involve multiple brain networks in order to assess convergence or divergence of neural pathways in  
7 relation to BR subdomains. To do so, we investigated associations between BR scores on the  
8 Behavior Rating Inventory of Executive Function (BRIEF), a parent report of BR, and the FC of ten  
9 limbic, prefrontal, parietal and temporal regions of interest (ROIs) in resting-state fMRI data of  
10 typically developing (TD) children and children with ADHD, DCD or ADHD-DCD. We  
11 hypothesized that children with an NDD would evidence more problems in BR than TD children. We  
12 further hypothesized that the FC of selected limbic, prefrontal, parietal and temporal ROIs would  
13 show associations with BR. Specifically, we hypothesized that (a) associations between FC and BR  
14 across all participants would exist; and (b) reflecting common neural mechanisms, some FC patterns  
15 would be associated with more than one BR subdomain, whereas others would not. We further  
16 hypothesized that (c) some FC patterns would differentiate children with and without a diagnosis and  
17 (d) some of these FC patterns would associate with BR, whereas others would not.

18

## 1 **2 METHODS AND MATERIALS**

2 This research was conducted in accordance with the Declaration of Helsinki for experiments  
3 involving human subjects. It was approved by the Conjoint Health Research Ethics Board of the  
4 University of Calgary. Written consent and verbal assent were obtained from parents or guardians,  
5 and participants, respectively.

6

### 7 **2.1 Participants**

8 Participants were recruited from local schools and through community advertisements in locations  
9 such as hospitals and physician's offices in Calgary, Alberta, Canada. TD children and children  
10 diagnosed with ADHD, DCD or ADHD-DCD, as well as children with attention and/or motor  
11 difficulties, were eligible, provided they had not been diagnosed with another neurodevelopmental or  
12 psychiatric disorder, a neurological, metabolic or genetic condition, and were not born preterm (<36  
13 weeks) or with very low birth weight (<1500g). Potential participants were screened for  
14 contraindications for MRI and other medical problems that would prevent participation. Recruited  
15 participants who met the above criteria were invited to participate in a detailed neuropsychological  
16 assessment. Children were classified as DCD if, in keeping with the Diagnostic and Statistical Manual  
17 of Mental Disorders - Fourth Edition Text Revision (DSM-IV-TR) (34), they scored less than the 16th  
18 percentile on the Movement Assessment Battery for Children - Second Edition (MABC-II) (35), and  
19 were reported by their parents as exhibiting motor difficulties that interfered significantly with daily  
20 functioning on the Developmental Coordination Questionnaire (36). Children were classified as  
21 ADHD if they met the diagnostic criteria on the Diagnostic Interview for Children and Adolescents -  
22 IV (37), or had a T score above the 95th percentile on the Conners' Parent Rating Scale - Revised  
23 (CPRS-R) (38) and were diagnosed by a physician as having ADHD based on DSM-IV-TR criteria.

1 Children meeting criteria for both ADHD and DCD were classified as ADHD-DCD. Children who  
 2 were prescribed stimulant treatment for ADHD were asked to refrain from taking their medication on  
 3 the day they underwent MRI scanning. A total of 149 participants who met criteria underwent resting  
 4 state fMRI. Of these, 6 did not complete the diagnostic assessment measures; 1 (ADHD-DCD) had a  
 5 diagnosis of Autism Spectrum Disorder; 14 (6 TD, 3 DCD, 3 ADHD, 2 ADHD-DCD) did not  
 6 complete the cognitive assessment; and 4 (1 ADHD-DCD, 1 ADHD, 2 DCD) did not complete their  
 7 MRI scan. Of the remaining participants, 9 had excessive head motion on their fMRI scan (>5mm  
 8 maximum absolute displacement). Participants' data were further evaluated for outliers on behavioral  
 9 measures, defined as > 3 SD from the mean. No participant was excluded due to this criterion. The  
 10 final sample consisted of 115 participants; characteristics are provided in Table 1.

11

	Total	TD	DCD	ADHD	ADHD-DCD	without ADHD	with ADHD
N (females)	115 (39†)	31 (14)	21 (13)	35 (8)	28 (4)	52 (27)	63 (12)
Age in years	11.2 (2.6)	11.6 (3)	11.7 (2.7)	11.4 (2.5)	10.3 (1.9)	11.6 (2.9)	10.9 (2.3)
Left-handed	16	3	4	4	5	7	9
Motion (mm)	1.5 (1.2)	1.5 (1.1)	1.2 (0.9)	1.5 (1.1)	1.8 (1.5)	1.36 (1.04)	1.66 (1.3)
FIQ	107 (15)	111 (15)	111 (16)	108 (12)	100 (17)	111 (15)	105 (14.5)
Inhibition	55.2 (13.6)†	48.9 (10.3)	51.1 (12.7)	60.8 (12.2)	57.9 (15.2)	49.8 (11.3)	59.6 (13.8)
Shifting	57 (14.9)†	51.9 (13.2)	50.2 (11.4)	60.5 (15.6)	63.3 (14.7)	51.2 (12.4)	61.8 (15.1)
Emotion Control	56.6 (13.7)†	53 (13)	49.6 (9.7)	58.9 (14.9)	63 (12.4)	51.6 (11.8)	60.7 (13.9)

12

13 **Table 1. Participant characteristics.** Means and standard deviations (in brackets) are provided for the total  
 14 sample, as well as for TD participants and participants with DCD, ADHD and ADHD-DCD and the children  
 15 without and with ADHD, separately. Motion (mm) refers to the absolute maximum displacement at any  
 16 timepoint in the resting-state fMRI scan prior to motion mitigation and denoising procedures. N=number of

1 participants; IQ=Intelligence Quotient. Inhibition, Shifting and Emotion Control scores on BRIEF are given as  
2 T scores. † denotes a significant difference between children with and without ADHD



## 1 **2.2 Cognitive and Behavioral Assessment**

2 The cognitive and behavioral data used here included Full Scale Intelligence (FSIQ), handedness and  
3 BR. FSIQ was measured using the Wechsler Abbreviated Scale of Intelligence (WASI) (39).  
4 Handedness was determined based on the preferred hand identified and used by the child when  
5 performing fine motor tasks on standardized measures of motor function (i.e., Movement Assessment  
6 Battery for Children - Second Edition) (35). BR was assessed with the Behavior Rating Inventory of  
7 Executive Function (BRIEF) (40), a standardized parent report measure of executive function  
8 behaviors for children aged 5-18 years. BRIEF subscales provide measures of three subdomains of  
9 BR, which are labelled “inhibit”, “shift”, and “emotion control”. The “inhibit” subscale assesses the  
10 ability to resist impulses and to stop one’s own behavior” (sample item: “acts wilder or sillier than  
11 others in groups (birthday parties, recess)”). The “shift” subscale assesses the ability to move freely  
12 from one situation, activity, or problem to another; to tolerate change, and to switch or alternate  
13 attention (sample item: “resists or has trouble accepting a different way to solve a problem with  
14 schoolwork, friends, chores, etc.”). Finally, the “emotion control” subscale assesses the ability to  
15 regulate emotional responses appropriately (sample item: “overreacts to small problems”). Normed T-  
16 scores for the BRIEF were used in the analyses, with higher scores indicating more problems in  
17 executive functions.

18

## 19 **2.3 MRI Data Acquisition Parameters**

20 Data were acquired at the Seaman Family MR Research Centre at the University of Calgary across  
21 two MRI systems due to a system upgrade. 67 scans were collected on a 3T GE Signa VH/i  
22 (Waukesha, WI) with an eight-channel phased-array radiofrequency head coil and 48 scans were  
23 collected on a GE 750 with an eight-channel phased-array head coil. Children were instructed to keep

1 their eyes on a fixation cross at the center of the screen. Functional images were acquired using a  
2 gradient-echo EPI sequence in 40 axial slices (120 volumes, TR=2500 ms, TE=30 ms, FA=70, matrix  
3 size 64x64, voxel size 3.44x3.44x3mm<sup>3</sup>; duration: 5 minutes) in the first round of acquisition, and in  
4 26 axial slices (140 volumes, TR=2500ms, TE=30ms, FA=70, matrix size 64x64, voxel size  
5 3.44x3.44x4mm<sup>3</sup>; duration: 5.8 minutes) in the second round of acquisition. Anatomical scans were  
6 acquired using a T1-weighted MPRAGE sequence (TR=1000ms, TE=2.5ms, FA=18, voxel size  
7 0.9x0.9x4mm<sup>3</sup> in the first round of acquisition and TR=7.4ms, TE=3.1ms, FA=13, voxel size  
8 1x1x0.8mm<sup>3</sup> in the second round of acquisition).

9

## 10 **2.4 MRI Data Preprocessing**

11 Data preprocessing used functions from FSL (41) and AFNI (42); the specific functions are denoted  
12 in brackets. Anatomical data was deobliqued (3drefit), oriented into FSL space (RPI) (3dresample)  
13 and skull-stripped (3dSkullStrip and 3dcalc). Functional data was also first deobliqued (3drefit) and  
14 oriented into FSL space (RPI) (3dresample). The pipeline further consisted of motion correction  
15 (MCFLIRT), skull-stripping (3dAutomask and 3dcalc), spatial smoothing (6mm Gaussian kernel full-  
16 width at half-maximum) (fslmaths), grand-mean scaling (fslmaths), registration to the participants  
17 anatomical (FLIRT), and normalization to the McConnell Brain Imaging Center NIHPD  
18 asymmetrical (natural) pediatric template optimized for ages 4.5 to 18.5 years (43) (FLIRT), followed  
19 by normalization to 2x2x2 mm MNI152 standard space (FLIRT). A four-step process previously  
20 employed in a study of children with an NDD (25) and supported by a benchmarking methods study  
21 (44) was used to address motion and physiological confounds in the data.

22

23

## 1 **Head-motion and Physiological Confound Mitigation Procedure**

2 A four-step process was used to address motion and physiological confounds in the data. First, motion  
3 estimates derived from the preprocessing were utilized to exclude participants with excessive head  
4 motion; scans were excluded if they exhibited >5 mm absolute maximum displacement. Second,  
5 AROMA was employed, an ICA-based cleaning method (91), which has recently been shown to be  
6 most effective in mitigating the impact of head motion, and allows for the retention of the remaining  
7 ‘true’ neural signal within an affected volume (96). AROMA is an automated procedure that uses a  
8 small but robust set of theoretically motivated temporal and spatial features (timeseries and power  
9 spectrum) to distinguish between ‘real’ neural signals and motion artifacts. We chose a threshold that  
10 is conservative about what is retained (‘aggressive’) in order to decrease the chance of false positives.  
11 Noise components identified by AROMA were removed from the data. Third, images were de-noised  
12 by regressing out the six motion parameters, as well as signal from white matter, cerebral spinal fluid  
13 and the global signal, as well as their first-order derivatives (44). While there is currently no gold  
14 standard (97) regarding the removal of the global signal, it was removed here based on evidence that  
15 it relates strongly to respiratory and other motion-induced signals, which persist through common  
16 denoising approaches including ICA and models that approximate respiratory variance (98). Motion  
17 (defined as each participant’s absolute maximum displacement) was substantially reduced following  
18 this procedure (before:  $1.5\text{mm} \pm 1.2\text{mm}$ ; after:  $0.07\text{mm} \pm 0.03\text{mm}$ ). As a final step, described below,  
19 head motion, defined as absolute maximum displacement, was included in the analysis models as a  
20 covariate of no interest, in order to minimize a residual influence of motion on the results.

21

22

## 1 **2.6 Analysis of Demographic, Cognitive and Behavioral Measures**

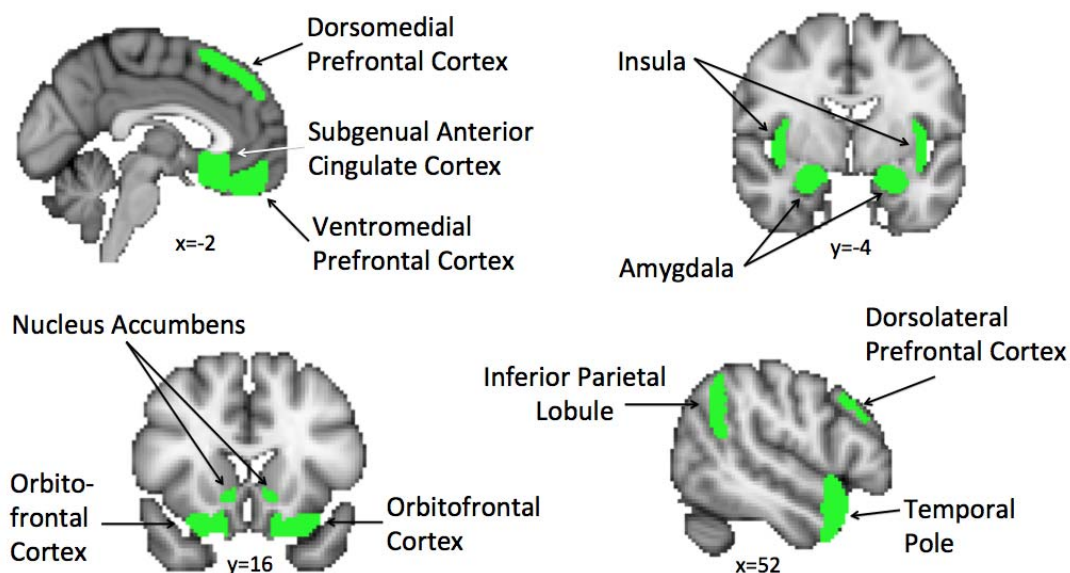
2 ANOVAs were utilized to assess differences in demographics and head motion between the four  
3 participant groups: TD children and children with DCD, ADHD or ADHD-DCD. ANCOVAs were  
4 then used to assess differences in BR, controlling for any observed differences in demographics  
5 between children as covariates of no interest. As described in the Results section below, there were no  
6 differences in BR between TD children and children with DCD, and also no differences between  
7 children with ADHD and ADHD-DCD; therefore, we focused the analysis on children with ADHD  
8 (ADHD and ADHD-DCD) versus children without ADHD (TD children and children with DCD). T-  
9 tests were utilized to assess differences in demographics, head motion and BR between these groups.  
10 Finally, Pearson correlations were computed to assess the relationship between demographics, head  
11 motion and BR scores. These analyses were carried out using SPSS 22 (Chicago, IL).

## 12 13 **2.7 Analysis of fMRI Data**

14 To examine FC of the regions of interest (ROIs), how they associate with BR scores across the brain  
15 and how they differ between groups, ten ROIs were selected based on a well-known model of BR  
16 (21) (see Figure 1 for details). To compute each ROI's FC map, the average time course was extracted  
17 for each ROI and entered into a voxel-wise correlation with every other voxel in the brain. Resultant  
18 whole-brain FC maps were normalized using Fisher's r-to-z transform ( $z=.5[\ln(1+r)-\ln(1-r)]$ ) for  
19 comparison across individuals. Group-level statistical testing was conducted using FLAME 1, a  
20 mixed-effects analysis in FSL's FEAT. In a correlation analysis, each BR subscale T-score was  
21 converted to a z-score and entered into a separate model to assess the association between FC and the  
22 respective subscale across the group. In a group contrast analysis, FC maps were compared between  
23 groups that showed significant differences in BR scores. All models included z-scored sex, scanner

1 and motion as nuisance covariates. Voxel-wise thresholding was set at z-score  $>2.3$ , and cluster  
2 correction was conducted using Gaussian Random Field theory with  $p < 0.05$ . The p-values for these  
3 results were then Bonferroni-corrected for ten comparisons (i.e., the number of seeds that were  
4 examined; significance set at  $p < 0.005$ ).

5



6

7 **Figure 1. Seed Regions of Interest.** To examine how FC associates with BR scores across the brain and how  
8 FC differs between groups, ten ROIs were selected in limbic areas (i.e., amygdala, insula and nucleus  
9 accumbens), prefrontal areas (i.e., dorsolateral, dorsomedial and ventromedial prefrontal cortex; orbitofrontal  
10 cortex and subgenual anterior cingulate cortex), parietal areas (i.e., inferior parietal lobule) and temporal areas  
11 (i.e., temporal pole). ROI masks were anatomically defined using probabilistic parcellation units provided  
12 through FSL with the Harvard-Oxford Atlas and thresholded at 50% probability, meaning any given voxel  
13 within the seed mask had a  $>50\%$  probability of lying within the specified region.

14

## 1 **2.8 Assessment of Specificity to Behavioral Regulation**

2 To evaluate whether our correlation analyses captured BR dimensionally or were driven by the  
3 categorical difference in scores due to ADHD diagnoses, we performed a post-hoc correlation  
4 analysis accounting for diagnostic status through an added nuisance covariate.

5

## 6 **3 RESULTS**

### 7 **3.1 Sample Characteristics**

8 Characteristics for the sample are provided in Table 1. There were no significant differences in BR  
9 between TD children and children with DCD, or between children with ADHD and children with  
10 ADHD-DCD. Group comparisons were therefore carried out only on the combined groups of children  
11 with ADHD (ADHD and ADHD-DCD,  $n = 63$ ) versus children without ADHD (TD and DCD,  $n =$   
12  $52$ ). Significant differences between children with and without ADHD existed in sex ( $p=0.0002$ ) and  
13 the distribution across scanners ( $p=0.006$ ), but not in motion (neither before cleaning nor after; both  
14  $p>.11$ ). Adjusting for these covariates (i.e. sex and distribution across scanners), results still showed  
15 significant differences between children with and without ADHD in inhibition ( $p=0.004$ ), shifting  
16 ( $p=0.002$ ), and emotion control ( $p=0.007$ ), reflecting greater challenges with BR for children with  
17 ADHD. Across all participants, BR subdomains correlated highly with each other (inhibition-shifting:  
18  $r=.53$ ,  $p<0.0001$ ; inhibition-emotion control:  $r=.52$ ,  $p<0.0001$ ; shifting-emotion control:  $r=.75$ ,  
19  $p<0.0001$ ). No correlations were observed between BR, and age, IQ or motion (neither before  
20 cleaning nor after; all  $p>.23$ ).

21

## 1 **3.2 Functional Connectivity**

2 A total of 23 FC patterns across 8 seeds were associated with BR across the entire group (i.e. all  
3 participants) (Table 2) in the correlation analysis. 61% (n = 14) of these FC patterns were associated  
4 with two or three BR subdomains (Figure 2) while 39% (n = 9) showed a unique association with just  
5 one BR subdomain (Figure 3). Overall, greater BR problems tended to be associated with stronger  
6 negative FC, but associated with weaker positive FC in 30% (n = 7) of the BR-associated patterns.  
7 These seven overlapped with FC patterns that were significantly different between children with and  
8 without ADHD. All FC patterns detected in the correlation analysis remained associated with BR  
9 after controlling for ADHD diagnosis, suggesting that these were dimensional effects and not driven  
10 by diagnostic status.

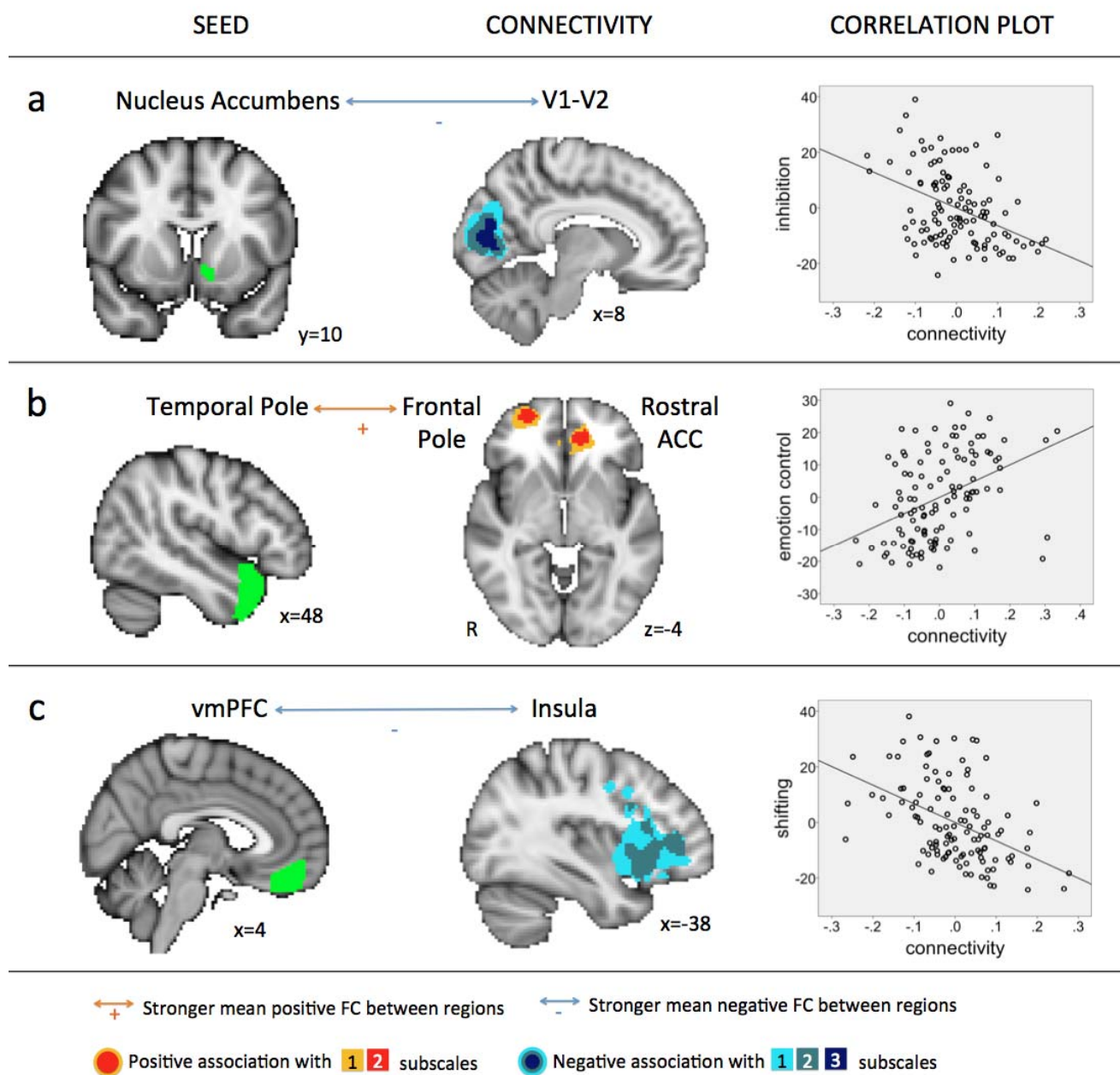
11

	Lat	Seed ROI	Direction	Voxels	p-value	Z-Max	X	Y	Z	Lat	Connectivity
<i>Emotion control</i>	L	sgACC *	neg	999	0.000936	3.84	-48	-10	-10	L	STG, Insula, Pallidum
	L	Insula	neg	1235	0.000919	3.43	20	-64	-12	BIL	V2-V3
	L	Accumbens	neg	2108	1.06E-05	3.72	-14	-72	8	BIL	V1-V2
	R	TP	pos	1834	0.000103	4	30	58	-2	BIL	rACC, Frontal Pole
	R	sgACC *	neg	1242	0.000255	3.62	-2	14	-2	L	sgACC, Pallidum, Putamen, Insula
<i>Inhibition</i>	L	OFC *	neg	2034	1.08E-05	3.93	12	34	6	BIL	vmPFC, Accumbens
	L	vmPFC	neg	1258	0.00138	3.51	-42	10	26	L	vlPFC, Insula
	L	TP	pos	2169	0.000122	3.76	8	-72	30	BIL	Precuneus, Cuneus, V1
	L	Accumbens	neg	2898	1.73E-06	3.82	-12	-72	14	BIL	V1-V2
	R	dIPFC	neg	992	0.00324	3.14	14	-74	22	BIL	V1-V2
	R	dmPFC	neg	1180	0.000286	3.39	-12	-68	8	R	V1-V2
	R	OFC *	neg	1353	0.00112	3.91	-30	26	-22	L	vmPFC, Accumbens
	R	vmPFC	neg	1967	7.25E-05	3.78	-36	38	0	L	vlPFC, Insula
R	Accumbens	neg	1357	0.000747	4.27	-38	6	14	L	Insula, TP	
<i>Shifting</i>	L	vmPFC	neg	2363	4.65E-06	4.24	-18	2	8	L	vlPFC, Insula
	L	sgACC *	neg	1759	5.84E-05	3.65	-18	10	10	L	Putamen, Pallidum, Insula
	L	sgACC *	neg	1076	0.00276	3.62	36	-12	-8	R	Putamen, Pallidum, Insula
	L	Accumbens	neg	2544	1.13E-06	3.78	-26	-72	4	BIL	V1-V2
	L	Accumbens	neg	1442	0.000302	3.46	-50	-6	42	L	Caudate, Putamen, Insula, TP, vlPFC
	R	vmPFC	neg	3104	1.07E-06	4.3	-42	10	8	L	vlPFC, Insula
	R	TP	pos	2163	5.26E-05	3.74	22	58	0	BIL	rACC, Frontal Pole
	R	sgACC *	neg	994	0.00285	3.58	42	-8	-4	R	Putamen, Insula
	R	Accumbens	neg	1756	4.78E-05	3.83	8	-12	-6	BIL	Thalamus, Pallidum, Putamen, Insula

**Table 2. Associations between BR subdomain scores and FC across all participants.** BIL=bilateral; dIPFC=dorsolateral prefrontal cortex; dmPFC=dorsomedial prefrontal cortex; L=left; Lat=Laterality; OFC=orbitofrontal cortex; R=right; rACC=rostral anterior cingulate cortex; ROI=region of interest; sgACC=subgenual anterior cingulate cortex; V1-V2= visual cortex 1-2; V2-V3=visual cortex 2-3; vACC=ventral anterior cingulate cortex; vlPFC=ventrolateral prefrontal cortex; vmPFC=ventromedial prefrontal cortex; TP=temporal pole. Direction refers to the direction of the association with BR. \*denotes overlap with FC pattern observed in group difference analysis



1

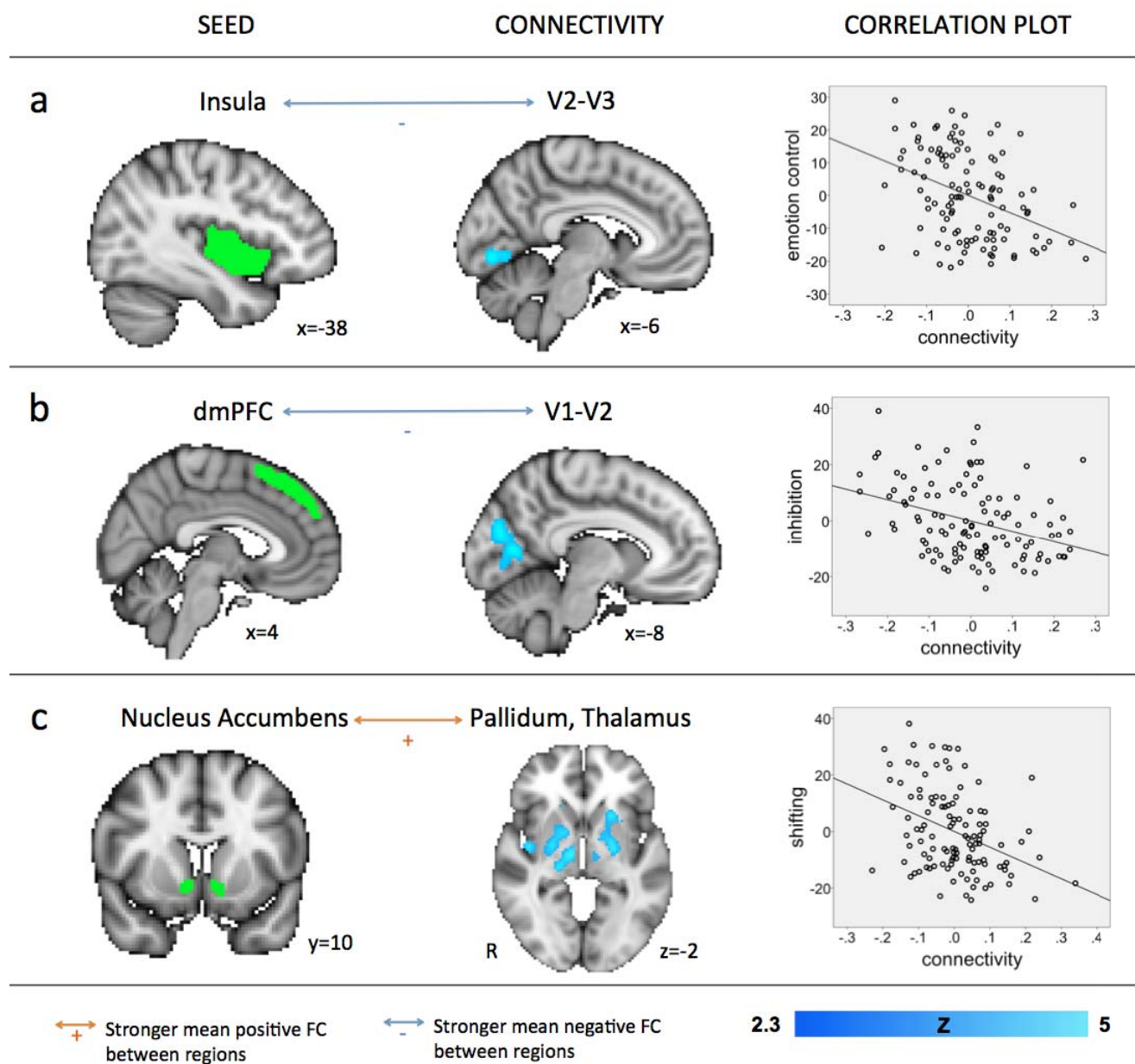


2

3 **Figure 2. FC patterns that associated with more than one BR subscale across all participants.** Stronger  
 4 negative FC was associated with greater BR problems in A and C, whereas stronger positive FC was associated  
 5 with greater BR problems in B. Panel A shows FC associated with all three subscales (the correlation with  
 6 inhibition is shown as an example); panel B shows FC associated with shifting and emotion control (the  
 7 correlation with emotion control is shown); and panel C shows FC associated with inhibition and shifting (the

1 correlation with shifting is shown). Note that these patterns were present bilaterally; the right side is shown.  
2 Positive associations between FC and scores are depicted in red-yellow, negative associations between FC and  
3 scores are depicted in blue-light blue. Maps are binarized to visualize overlapping patterns. Colored arrows  
4 with + and – signs indicate the direction of FC between seed and cluster regions as identified via the seed’s FC  
5 map. Correlation plots show all values adjusted for sex, scanner and motion. ACC=anterior cingulate cortex;  
6 R=right hemisphere; V1-V2= visual cortex 1-2; vmPFC=ventromedial prefrontal cortex  
7

1



2

3 **Figure 3. FC patterns that associated with only one BR subscale across all participants.** Stronger negative  
 4 FC was associated with greater BR problems in A and B; weaker positive FC was associated with greater BR  
 5 problems in C. Panel A shows FC associated with emotion control; panel B shows FC associated with  
 6 inhibition; and panel C shows FC associated with shifting. Note that these patterns were present bilaterally; the  
 7 right side is shown. Negative associations between FC and scores are depicted in blue-light blue; Z values

1 reflect the strength of the association. Colored arrows with + and – signs indicate the direction of FC between  
2 seed and cluster regions as identified via the seed’s FC map. Correlation plots show all values adjusted for sex,  
3 scanner and motion. dmPFC=dorsomedial prefrontal cortex; R=right hemisphere; V1-V2= visual cortex 1-2;  
4 V2-V3=visual cortex 2-3  
5  
6 Eleven FC patterns were significantly different between children with and without ADHD (Table 3)  
7 in the group contrast analysis. 36% (n = 4) of these overlapped with FC patterns that associated with  
8 BR in the correlation analysis. Children with ADHD exhibited significantly weaker positive FC  
9 revolving around sgACC and putamen/pallidum/insula, which was associated with shifting and  
10 emotion control, as well as around OFC and vmPFC, which was associated with inhibition (Figure 4;  
11 FC values were drawn from the two independent analyses).

1

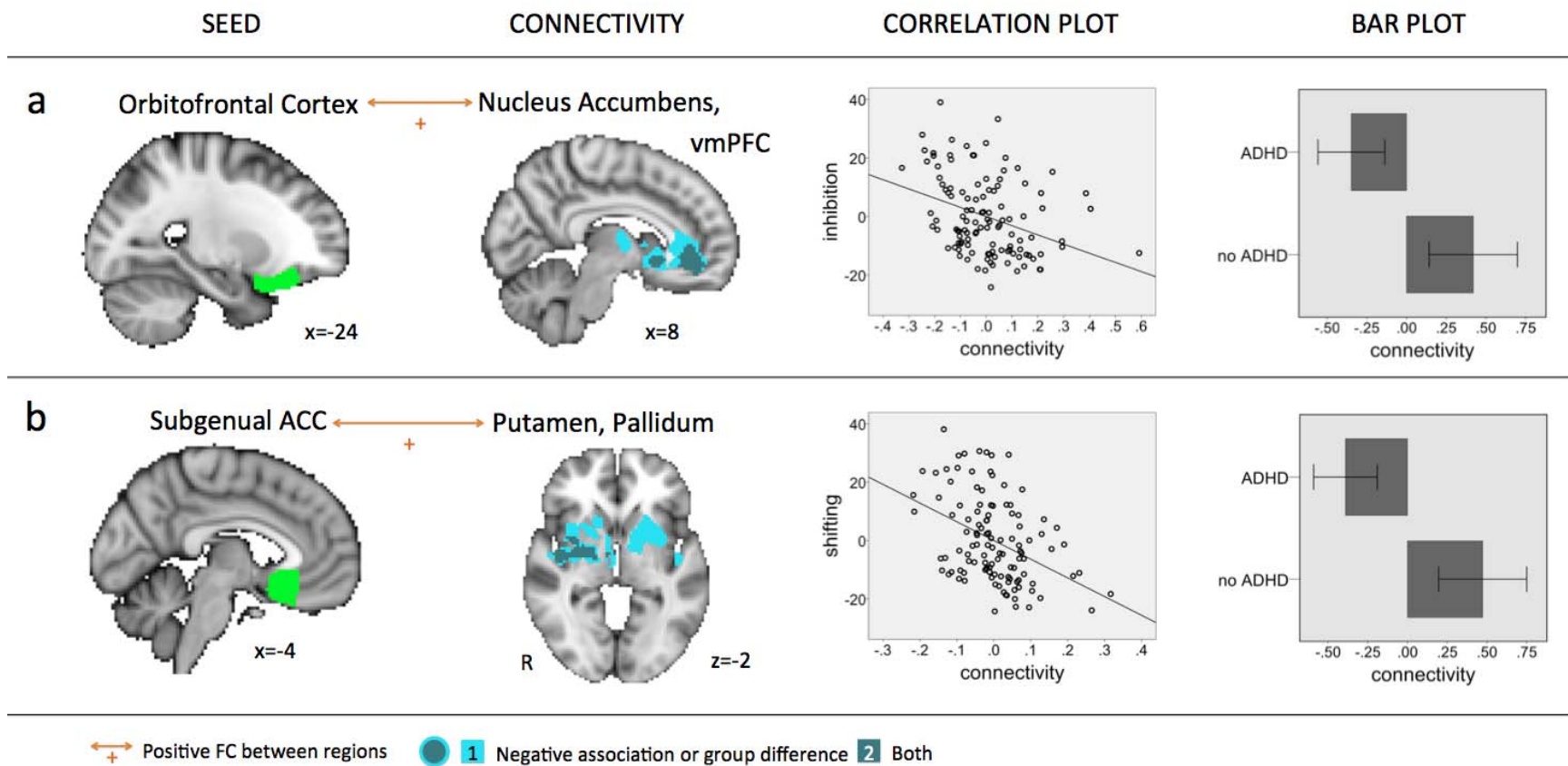
	Lat	Seed ROI	Direction	Voxels	p-value	Z-Max	X	Y	Z	Lat	Connectivity
<i>differences between children with and without ADHD</i>	L	OFC *	A < nonA	2263	1.67E-06	3.68	16	44	-10	R	vmPFC, Accumbens
	L	vmPFC	A < nonA	2845	1.79E-07	4.06	16	22	-6	BIL	Accumbens, Caudate, OFC
	L	sgACC *	A < nonA	1789	5.20E-05	4.34	44	-12	12	R	Putamen, Pallidum, Insula
	L	Accumbens	A < nonA	2073	5.96E-07	4.02	30	32	-24	BIL	OFC, sgACC, rACC, vmPFC
	R	OFC *	A < nonA	2876	6.56E-07	4.78	-30	28	-26	BIL	vmPFC, Accumbens
	R	vmPFC	A < nonA	2566	4.77E-07	3.95	16	20	-6	BIL	Accumbens, Caudate, OFC
	R	sgACC *	A < nonA	1781	0.000112	4.19	44	-12	12	R	Putamen, Pallidum, Insula, Thalamus, Amygdala/Hippocampus
	R	Accumbens	A < nonA	3061	1.19E-07	4.08	-22	34	-24	BIL	Caudate, Putamen, vmPFC
	R	Amygdala	A < nonA	1013	0.00261	3.57	32	48	-10	BIL	sgACC
	L	OFC	A > nonA	1131	0.00108	3.85	-10	-46	14	BIL	PCC
R	Insula	A > nonA	975	0.00464	3.4	-52	-74	18	L	Superior Lateral Occipital Cortex	

2

**Table 3. Differences in FC between children with and without ADHD.** A=children with ADHD; nonA=children without ADHD; BIL=bilateral; dlPFC=dorsolateral prefrontal cortex; dmPFC=dorsomedial prefrontal cortex; L=left; Lat=Laterality; M1=primary motor cortex; OFC=orbitofrontal cortex; PCC=Posterior Cingulate Cortex; R=right; rACC=rostral anterior cingulate cortex; ROI=region of interest; S1=primary somatosensory cortex; sgACC=subgenual anterior cingulate cortex; V1-V2= visual cortex 1-2; V2-V3=visual cortex 2-3; vACC=ventral anterior cingulate cortex; vmPFC=ventromedial prefrontal cortex. Direction refers to the direction of the association with BR. \*denotes overlap with FC patterns associated with BR subdomain scores across all participants

9

10



1  
2 **Figure 4. FC patterns that associated with BR subscales and showed significantly weaker positive FC in children with ADHD.** Panel A  
3 shows FC that was associated with inhibition and significantly different between children with and without ADHD. This pattern was present  
4 bilaterally; the left side is shown. Panel B shows FC that was associated with both shifting and significantly different between children with and  
5 without ADHD. This pattern was also present bilaterally; again the left side is shown. A contralateral version of this pattern – from the left sgACC  
6 to the left rather than the right putamen, pallidum and insula - was associated with emotion control. In both A and B, weaker positive FC was  
7 associated with greater BR problems. Negative associations between FC and BR scores and significant group differences are depicted in blue-light

1 tblue; maps are binarized to visualize overlapping patterns. Colored arrows with + signs indicate positive FC between seed and cluster regions as  
2 identified via the seed's FC map. Bar plot and correlation plot FC values shown are from two independent analyses. Bar plot FC values were  
3 extracted from the group contrast GLM and show significant differences in average FC within the overlapping cluster with error bars (CI 95%).  
4 Correlation plot FC values were extracted from the correlation GLMs testing for significant associations with BR and show FC values within the  
5 overlapping cluster. All values are adjusted for sex, scanner and motion. ACC=anterior cingulate cortex; R=right hemisphere;  
6 vmPFC=ventromedial prefrontal cortex

7

## 1 **4 DISCUSSION**

2 Poorer behavioral self-regulation (BR) is a known issue for children with NDDs such as ADHD and  
3 is associated with greater daily-life challenges and an increased risk for psychiatric comorbidities (6,  
4 7). In this study, we found that children with a diagnosis of ADHD (i.e. children with ADHD or  
5 ADHD-DCD) had significantly more problems in BR than typically developing children and children  
6 with ‘pure’ DCD. The strength of distributed patterns of FC was associated with children’s individual  
7 differences in three BR subdomains: emotion control, inhibition and shifting. Some FC patterns were  
8 associated with more than one BR subdomain while other FC patterns were specific to one BR  
9 subdomain; none were explained by ADHD diagnostic status. A subset of FC patterns that were  
10 significantly different between children with and without ADHD converged with FC patterns that  
11 associated with BR in the group overall. Overall, our results show that selected subsets of whole-brain  
12 FC data involving frontostriatal, temporo-limbic and visual pathways may have utility as brain-based  
13 signatures of BR across children with and without ADHD.

14

15 Unlike several recent studies (13-16), we found no elevation of BR scores in children with ‘pure’  
16 DCD. This may be because we rigorously screened for comorbid ADHD; it has been found that up to  
17 50% of children with DCD meet diagnostic criteria for ADHD while only 5% are diagnosed (45). We  
18 also found that children with ADHD-DCD showed elevated scores on BR; therefore, it is likely that  
19 BR problems in children with DCD are due to comorbidity with ADHD rather than DCD itself.

20

21 FC patterns that generalized to more than one BR subdomain included pathways between prefrontal  
22 and temporal areas, and pathways between striatal and visual areas. FC between vmPFC and vIPFC  
23 and insula, regions with strong anatomical connections, was related to shifting and inhibition. Data



1 suggests that the vmPFC integrates affective valuations from temporal lobe systems including the  
2 insula that provide interoceptive awareness of the body and information about prior encounters with  
3 stimuli (21, 46). FC between TP and rACC (also known as perigenual ACC), also regions that are  
4 anatomically connected, was related to shifting and emotion. Macaque studies have shown that the  
5 ACC receives input from the TP and other temporal areas (47, 48), and both are thought to act as  
6 domain-general hubs, with the TP integrating socioemotional information (49) and the ACC  
7 monitoring for emotionally conflicting information and prepotent responses (50-52). Thus, both FC  
8 pathways involve prefrontal cognitive control areas (vmPFC, rACC) that receive pre-processed  
9 sensory information from temporal lobe systems (insula, temporal pole).

10

11 FC between nucleus accumbens (NAcc) and visual areas, which was linked to all three BR  
12 subdomains, has been observed during reward processing (53) and NAcc and visual areas have been  
13 jointly activated in reward-directed action and inhibition of action (54) and response to incentives  
14 (55). NAcc is known to play an important role in processing rewarding and reinforcing stimuli (e.g.,  
15 food and water) (56) as well as in reward anticipation (57) and outcome prediction (58, 59); it  
16 receives projections from dopamine-releasing neurons (60) and interacts with the PFC (61). Reward  
17 and BR are arguably linked (62), especially in children (63). This pattern is a FC pathway between a  
18 primary sensory system and a dopaminergic structure that exchanges information with prefrontal  
19 control areas.

20

21 FC patterns that were specific to just one BR subdomain included pathways between prefrontal and  
22 visual areas, between temporal and visual areas, and thalamo-striatal pathways. For instance, FC  
23 between the insula and the visual cortex was specific to emotion control. This is an anatomically

1 connected pathway relevant to interoception in emotion processing (64) that has been linked to  
2 alexythymia (65). Alexithymia is a difficulty in identifying and verbalizing one's own emotions; it can  
3 also impact an individual's ability to identify emotions in others and empathize; both hamper an  
4 individual's ability to regulate their emotions in an adaptive manner (66). As another example, FC  
5 between the dmPFC and visual areas was specific to inhibition. This pathway is heavily implicated in  
6 top-down modulation of visual processing and visual recognition especially in relationship to working  
7 memory (67, 68) and conflict processing (50), and has been shown to be altered in major depressive  
8 disorder (67), another condition in which issues with BR are readily apparent (69). Finally, FC within  
9 thalamo-striatal pathways was specific to shifting. This anatomically closely connected pathway is  
10 rich in dopamine, and dopamine is thought to code for learned associations and mediate approach  
11 behavior toward a reward; it is known to be actively involved in tasks requiring cognitive flexibility  
12 (70).

13  
14 FC patterns that were significantly different between children with and without ADHD and associated  
15 with BR centered on frontostriatal reward pathways known to be affected in ADHD (71). Inhibition  
16 has been associated with FC between the OFC and NAcc/vmPFC, and animal studies have shown that  
17 haemodynamic signals of, and neuronal projections between, OFC and NAcc are related to inhibition-  
18 related processes that are part of reinforcement learning (72, 73). Shifting and emotion control have  
19 been associated with FC between sgACC and putamen/pallidum and activity in both structures has  
20 been found to be aberrant during reward prediction in obsessive-compulsive disorder (74), a disorder  
21 often comorbid with ADHD that like ADHD is a 'disorder of control' (75). Volume in both structures  
22 has been found to be different in individuals with ADHD (76).

23

1 It is not clear what drives these FC patterns to be significantly different between children with and  
2 without ADHD, when many other FC patterns were not, despite significant differences in scores on  
3 measures of BR. This may lead one to consider FC patterns that were not significantly different to be  
4 ‘intact’. However, one needs to keep in mind that FC in these patterns were elevated in children with  
5 ADHD, which may be meaningful clinically, as statistical significance is not identical to clinical  
6 relevance (77).

7  
8 Individual differences in BR have been repeatedly found to be associated with individual features in  
9 FC (50, 78, 79). Taking individual differences into account can help expose the underlying neural  
10 substrates of complex cognitive skills, emotions and social competencies, and has proven useful in the  
11 investigation of both neurotypical (80-83) and clinical populations (84-86) as traits and abilities  
12 associated with NDDs such as ADHD also exist in the neurotypical population, and fall onto a  
13 spectrum (84, 87). The use of individual differences also allows for more statistical power in studies  
14 on NDDs, which struggle with sample sizes and many sources of heterogeneity (29, 88-90).

15  
16 The current study has several distinct strengths, which include appropriate preprocessing techniques,  
17 the use of a measure that assessed three subdomains of BR in a relatively large group of children with  
18 and without ADHD, and the inclusion of a comorbid group that helped to attribute differences to  
19 ADHD specifically. The denoising methods employed allowed for the retention of the remaining  
20 ‘true’ neural signal within an affected volume and were in accordance with the latest best practices for  
21 reducing motion artifacts (44), which is particularly relevant for a neurodevelopmental study (91-93).  
22 The measure used to assess BR is well validated (40) and although parent-reports are subjective, they  
23 capture a measure of behavior integrated over a longer time frame than can be observed in a

1 laboratory visit and have better test-retest reliability (94). The study also has several weaknesses,  
2 including a relatively short scan time and differences between children with and without ADHD in (i)  
3 sex ratios and (iii) distribution across scanners, as well as a small N in the ‘pure’ DCD group. We  
4 have done our best to account for these by including sex and scanner as covariates in all analyses.  
5 While a short scan time is of benefit from an acquisition perspective, longer scan times may  
6 strengthen the reliability of FC estimates (95).

7

8 Our findings present a substantial addition to our knowledge on BR and its underlying neural  
9 expression across a neurodiverse spectrum of children with and without ADHD, including children  
10 with DCD and combined ADHD-DCD. They suggest that BR problems in DCD are likely attributable  
11 to a comorbidity with ADHD. Children’s individual differences in the three BR subdomains further  
12 associated with FC. Primary visual to mesolimbic FC pathways and FC pathways that integrate pre-  
13 processed sensory information with cognitive control processes were associated with multiple BR  
14 subdomains while thalamo-striatal FC patterns and FC patterns involving the visual stream were  
15 specific to one subdomain. Only BR-associated FC in frontostriatal reward pathways was  
16 significantly different between children with and without ADHD. Overall, our results highlight the  
17 utility of directly examining variables of interest and their associations with whole-brain FC and show  
18 that these may have utility as brain-based signatures of BR across children with and without ADHD.

19

## 20 **ACKNOWLEDGEMENTS**

21 This work was supported by a grant from the Canadian Institutes of Health Research awarded to DD  
22 (MOP 88588), as well as NSERC CREATE I3T and Alberta Innovates Postdoctoral Fellowships  
23 awarded to CR. The funders had no role in study design, data collection and analysis, decision to

1 publish or preparation of the manuscript. The authors thank all children and families who participated  
2 in this study.

3

#### 4 **REFERENCES**

- 5 1. Shaw P, Stringaris A, Nigg J, Leibenluft E (2014): Emotion dysregulation in attention deficit hyperactivity  
6 disorder. *Am J Psychiatry*. 171:276-293.
- 7 2. Posner J, Kass E, Hulvershorn L (2014): Using stimulants to treat ADHD-related emotional lability. *Curr*  
8 *Psychiatry Rep*. 16:478.
- 9 3. Rosen PJ, Walerius DM, Fogleman ND, Factor PI (2015): The association of emotional lability and emotional  
10 and behavioral difficulties among children with and without ADHD. *Atten Defic Hyperact Disord*. 7:281-294.
- 11 4. Diamond A (2013): Executive functions. *Annu Rev Psychol*. 64:135-168.
- 12 5. Blair C, Raver CC (2015): School readiness and self-regulation: a developmental psychobiological approach.  
13 *Annu Rev Psychol*. 66:711-731.
- 14 6. Spencer TJ, Faraone SV, Surman CB, Petty C, Clarke A, Batchelder H, et al. (2011): Toward defining deficient  
15 emotional self-regulation in children with attention-deficit/hyperactivity disorder using the Child Behavior Checklist: a  
16 controlled study. *Postgrad Med*. 123:50-59.
- 17 7. Barkley RA, Fischer M (2010): The unique contribution of emotional impulsiveness to impairment in major life  
18 activities in hyperactive children as adults. *J Am Acad Child Adolesc Psychiatry*. 49:503-513.
- 19 8. Lenzi F, Cortese S, Harris J, Masi G (2018): Pharmacotherapy of emotional dysregulation in adults with ADHD:  
20 A systematic review and meta-analysis. *Neurosci Biobehav Rev*. 84:359-367.
- 21 9. Sobanski E, Banaschewski T, Asherson P, Buitelaar J, Chen W, Franke B, et al. (2010): Emotional lability in  
22 children and adolescents with attention deficit/hyperactivity disorder (ADHD): clinical correlates and familial prevalence.  
23 *J Child Psychol Psychiatry*. 51:915-923.
- 24 10. Becker A, Steinhausen HC, Baldursson G, Dalsgaard S, Lorenzo MJ, Ralston SJ, et al. (2006):  
25 Psychopathological screening of children with ADHD: Strengths and Difficulties Questionnaire in a pan-European study.  
26 *Eur Child Adolesc Psychiatry*. 15 Suppl 1:I56-62.
- 27 11. Stringaris A, Goodman R (2009): Mood lability and psychopathology in youth. *Psychol Med*. 39:1237-1245.

- 1 12. American\_Psychiatric\_Association (2013): *Diagnostic and Statistical Manual of Mental Disorders - Fifth*  
2 *Edition*. Washington, D.C.: American Psychiatric Association.
- 3 13. van den Heuvel M, Jansen DE, Reijneveld SA, Flapper BC, Smits-Engelsman BC (2016): Identification of  
4 emotional and behavioral problems by teachers in children with developmental coordination disorder in the school  
5 community. *Res Dev Disabil.* 51-52:40-48.
- 6 14. Crane L, Sumner E, Hill EL (2017): Emotional and behavioural problems in children with Developmental  
7 Coordination Disorder: Exploring parent and teacher reports. *Res Dev Disabil.* 70:67-74.
- 8 15. Rodriguez MC, Wade TJ, Veldhuizen S, Missiuna C, Timmons B, Cairney J (2019): Emotional and Behavioral  
9 Problems in 4- and 5-Year Old Children With and Without Motor Delays. *Front Pediatr.* 7:474.
- 10 16. Rahimi-Golkhandan S, Steenbergen B, Piek JP, Wilson PH (2014): Deficits of hot executive function in  
11 developmental coordination disorder: sensitivity to positive social cues. *Hum Mov Sci.* 38:209-224.
- 12 17. Faja S, Nelson Darling L (2018): Variation in restricted and repetitive behaviors and interests relates to inhibitory  
13 control and shifting in children with autism spectrum disorder. *Autism.* 1362361318804192.
- 14 18. Nigg JT (2000): On inhibition/disinhibition in developmental psychopathology: views from cognitive and  
15 personality psychology and a working inhibition taxonomy. *Psychol Bull.* 126:220-246.
- 16 19. Miyake A, Friedman NP, Emerson MJ, Witzki AH, Howerter A, Wager TD (2000): The unity and diversity of  
17 executive functions and their contributions to complex "Frontal Lobe" tasks: a latent variable analysis. *Cogn Psychol.*  
18 41:49-100.
- 19 20. Armbruster DJ, Ueltzhöffer K, Basten U, Fiebach CJ (2012): Prefrontal cortical mechanisms underlying  
20 individual differences in cognitive flexibility and stability. *J Cogn Neurosci.* 24:2385-2399.
- 21 21. Ochsner KN, Silvers JA, Buhle JT (2012): Functional imaging studies of emotion regulation: a synthetic review  
22 and evolving model of the cognitive control of emotion. *Ann NY Acad Sci.* 1251:E1-24.
- 23 22. Gross JJ (2002): Emotion regulation: affective, cognitive, and social consequences. *Psychophysiology.* 39:281-  
24 291.
- 25 23. Morawetz C, Bode S, Derntl B, Heekeren HR (2017): The effect of strategies, goals and stimulus material on the  
26 neural mechanisms of emotion regulation: A meta-analysis of fMRI studies. *Neurosci Biobehav Rev.* 72:111-128.

- 1 24. Picó-Pérez M, Radua J, Steward T, Menchón JM, Soriano-Mas C (2017): Emotion regulation in mood and  
2 anxiety disorders: A meta-analysis of fMRI cognitive reappraisal studies. *Prog Neuropsychopharmacol Biol Psychiatry*.  
3 79:96-104.
- 4 25. Rohr CS, Kamal S, Bray S (2020): Building functional connectivity neuromarkers of behavioral self-regulation  
5 across children with and without Autism Spectrum Disorder. *Dev Cogn Neurosci*. 41:100747.
- 6 26. Dajani DR, Uddin LQ (2015): Demystifying cognitive flexibility: Implications for clinical and developmental  
7 neuroscience. *Trends Neurosci*. 38:571-578.
- 8 27. Ameis SH, Lerch JP, Taylor MJ, Lee W, Viviano JD, Pipitone J, et al. (2016): A Diffusion Tensor Imaging Study  
9 in Children With ADHD, Autism Spectrum Disorder, OCD, and Matched Controls: Distinct and Non-Distinct White  
10 Matter Disruption and Dimensional Brain-Behavior Relationships. *Am J Psychiatry*. 173:1213-1222.
- 11 28. Lake EMR, Finn ES, Noble SM, Vanderwal T, Shen X, Rosenberg MD, et al. (2019): The Functional Brain  
12 Organization of an Individual Allows Prediction of Measures of Social Abilities Transdiagnostically in Autism and  
13 Attention-Deficit/Hyperactivity Disorder. *Biol Psychiatry*.
- 14 29. Uddin LQ, Dajani DR, Voorhies W, Bednarz H, Kana RK (2017): Progress and roadblocks in the search for  
15 brain-based biomarkers of autism and attention-deficit/hyperactivity disorder. *Transl Psychiatry*. 7:e1218.
- 16 30. Powers JP, LaBar KS (2019): Regulating emotion through distancing: A taxonomy, neurocognitive model, and  
17 supporting meta-analysis. *Neurosci Biobehav Rev*. 96:155-173.
- 18 31. Braunstein LM, Gross JJ, Ochsner KN (2017): Explicit and implicit emotion regulation: a multi-level framework.  
19 *Soc Cogn Affect Neurosci*. 12:1545-1557.
- 20 32. Elton A, Alcauter S, Gao W (2014): Network connectivity abnormality profile supports a categorical-  
21 dimensional hybrid model of ADHD. *Hum Brain Mapp*. 35:4531-4543.
- 22 33. Rosenberg MD, Finn ES, Scheinost D, Papademetris X, Shen X, Constable RT, et al. (2016): A neuromarker of  
23 sustained attention from whole-brain functional connectivity. *Nat Neurosci*. 19:165-171.
- 24 34. American\_Psychiatric\_Association (2000): Diagnostic and Statistical Manual of Mental Disorders: DSM-IV-TR.  
25 Washington, D.C.: American Psychiatric Association.
- 26 35. Henderson S, Sudgen D, Barnett A (2007): *Movement Assessment Battery for Children - Second Edition*.  
27 London, UK: Psychological Corporation.

- 1 36. Wilson BN, Kaplan BJ, Crawford SG, Campbell A, Dewey D (2000): Reliability and validity of a parent  
2 questionnaire on childhood motor skills. *Am J Occup Ther.* 54:484-493.
- 3 37. Reich W, Weltner Z, Herjanic B (1997): The Diagnostic Interview for Children and Adolescents-IV. North  
4 Tonawanda, N.Y.: Multi-Health Systems.
- 5 38. Conners CK, Sitarenios G, Parker JD, Epstein JN (1998): The revised Conners' Parent Rating Scale (CPRS-R):  
6 factor structure, reliability, and criterion validity. *J Abnorm Child Psychol.* 26:257-268.
- 7 39. Wechsler D (1999): Wechsler Abbreviated Scale of Intelligence. San Antonio, TX: The Psychological  
8 Corporation.
- 9 40. Gioia GA, Isquith PK, Guy SC, Kenworthy L (2000): Test review behavior rating inventory of executive  
10 function. *Child Neuropsychology.* 6:235-238.
- 11 41. Smith SM, Jenkinson M, Woolrich MW, Beckmann CF, Behrens TEJ, Johansen-Berg H, et al. (2004): Advances  
12 in functional and structural MR image analysis and implementation as FSL. *Neuroimage.* 23:S208-S219.
- 13 42. Cox RW (1996): AFNI: Software for analysis and visualization of functional magnetic resonance neuroimages.  
14 *Computers and Biomedical Research.* 29:162-173.
- 15 43. Fonov V, Evans AC, Botteron K, Almli CR, McKinstry RC, Collins DL, et al. (2011): Unbiased average age-  
16 appropriate atlases for pediatric studies. *Neuroimage.* 54:313-327.
- 17 44. Parkes L, Fulcher B, Yücel M, Fornito A (2018): An evaluation of the efficacy, reliability, and sensitivity of  
18 motion correction strategies for resting-state functional MRI. *Neuroimage.* 171:415-436.
- 19 45. McLeod KR, Langevin LM, Dewey D, Goodyear BG (2016): Atypical within- and between-hemisphere motor  
20 network functional connections in children with developmental coordination disorder and attention-deficit/hyperactivity  
21 disorder. *Neuroimage Clin.* 12:157-164.
- 22 46. Hare TA, Camerer CF, Rangel A (2009): Self-control in decision-making involves modulation of the vmPFC  
23 valuation system. *Science.* 324:646-648.
- 24 47. Joyce MKP, Barbas H (2018): Cortical Connections Position Primate Area 25 as a Keystone for Interoception,  
25 Emotion, and Memory. *J Neurosci.* 38:1677-1698.
- 26 48. Sakata H, Kim Y, Nejime M, Konoike N, Miyachi S, Nakamura K (2019): Laminar Pattern of Projections  
27 Indicates the Hierarchical Organization of the Anterior Cingulate-Temporal Lobe Emotion System. *Front Neuroanat.*  
28 13:74.



- 1 49. Pehrs C, Zaki J, Schlochtermeyer LH, Jacobs AM, Kuchinke L, Koelsch S (2017): The Temporal Pole Top-Down  
2 Modulates the Ventral Visual Stream During Social Cognition. *Cereb Cortex*. 27:777-792.
- 3 50. Rohr CS, Villringer A, Solms-Baruth C, van der Meer E, Margulies DS, Okon-Singer H (2016): The neural  
4 networks of subjectively evaluated emotional conflicts. *Hum Brain Mapp*. 37:2234-2246.
- 5 51. Etkin A, Prater K, Hoefl F, Menon V, Schatzberg A (2010): Failure of Anterior Cingulate Activation and  
6 Connectivity With the Amygdala During Implicit Regulation of Emotional Processing in Generalized Anxiety Disorder.  
7 *American Journal of Psychiatry*. 167:545-554.
- 8 52. Egner T, Etkin A, Gale S, Hirsch J (2008): Dissociable neural systems resolve conflict from emotional versus  
9 nonemotional distracters. *Cerebral Cortex*. 18:1475-1484.
- 10 53. Weiland BJ, Welsh RC, Yau WY, Zucker RA, Zubieta JK, Heitzeg MM (2013): Accumbens functional  
11 connectivity during reward mediates sensation-seeking and alcohol use in high-risk youth. *Drug Alcohol Depend*.  
12 128:130-139.
- 13 54. Le TM, Zhang S, Zhornitsky S, Wang W, Li CR (2020): Neural correlates of reward-directed action and  
14 inhibition of action. *Cortex*. 123:42-56.
- 15 55. Gorka AX, Fuchs B, Grillon C, Ernst M (2018): Impact of induced anxiety on neural responses to monetary  
16 incentives. *Soc Cogn Affect Neurosci*. 13:1111-1119.
- 17 56. Olsen CM (2011): Natural rewards, neuroplasticity, and non-drug addictions. *Neuropharmacology*. 61:1109-  
18 1122.
- 19 57. Schuetze M, Rohr CS, Dewey D, McCrimmon A, Bray S (2017): Reinforcement Learning in Autism Spectrum  
20 Disorder. *Front Psychol*. 8:2035.
- 21 58. Bray S, O'Doherty J (2007): Neural coding of reward-prediction error signals during classical conditioning with  
22 attractive faces. *J Neurophysiol*. 97:3036-3045.
- 23 59. Schuetze M, Cho IYK, Vinette S, Rivard KB, Rohr CS, Ten Eycke K, et al. (2019): Learning with individual-  
24 interest outcomes in Autism Spectrum Disorder. *Dev Cogn Neurosci*. 38:100668.
- 25 60. Ikemoto S (2010): Brain reward circuitry beyond the mesolimbic dopamine system: a neurobiological theory.  
26 *Neurosci Biobehav Rev*. 35:129-150.
- 27 61. Gipson CD, Kupchik YM, Kalivas PW (2014): Rapid, transient synaptic plasticity in addiction.  
28 *Neuropharmacology*. 76 Pt B:276-286.

- 1 62. Brandl F, Le Houcq Corbi Z, Mulej Bratec S, Sorg C (2019): Cognitive reward control recruits medial and lateral  
2 frontal cortices, which are also involved in cognitive emotion regulation: A coordinate-based meta-analysis of fMRI  
3 studies. *Neuroimage*. 200:659-673.
- 4 63. Power TG, Olivera YA, Hill RA, Beck AD, Hopwood V, Garcia KS, et al. (2016): Emotion regulation strategies  
5 and childhood obesity in high risk preschoolers. *Appetite*. 107:623-627.
- 6 64. Jakab A, Molnár PP, Bogner P, Béres M, Berényi EL (2012): Connectivity-based parcellation reveals  
7 interhemispheric differences in the insula. *Brain Topogr*. 25:264-271.
- 8 65. Kano M, Fukudo S (2013): The alexithymic brain: the neural pathways linking alexithymia to physical disorders.  
9 *Biopsychosoc Med*. 7:1.
- 10 66. Chen J, Xu T, Jing J, Chan RC (2011): Alexithymia and emotional regulation: A cluster analytical approach.  
11 *BMC Psychiatry*. 11:33.
- 12 67. Le TM, Borghi JA, Kujawa AJ, Klein DN, Leung HC (2017): Alterations in visual cortical activation and  
13 connectivity with prefrontal cortex during working memory updating in major depressive disorder. *Neuroimage Clin*.  
14 14:43-53.
- 15 68. Gazzaley A, Rissman J, Cooney J, Rutman A, Seibert T, Clapp W, et al. (2007): Functional interactions between  
16 prefrontal and visual association cortex contribute to top-down modulation of visual processing. *Cereb Cortex*. 17 Suppl  
17 1:i125-135.
- 18 69. Visted E, Vøllestad J, Nielsen MB, Schanche E (2018): Emotion Regulation in Current and Remitted Depression:  
19 A Systematic Review and Meta-Analysis. *Front Psychol*. 9:756.
- 20 70. Klanker M, Feenstra M, Denys D (2013): Dopaminergic control of cognitive flexibility in humans and animals.  
21 *Front Neurosci*. 7:201.
- 22 71. Norman LJ, Carlisi CO, Christakou A, Murphy CM, Chantiluke K, Giampietro V, et al. (2018): Frontostriatal  
23 Dysfunction During Decision Making in Attention-Deficit/Hyperactivity Disorder and Obsessive-Compulsive Disorder.  
24 *Biol Psychiatry Cogn Neurosci Neuroimaging*. 3:694-703.
- 25 72. Groman SM, Keistler C, Keip AJ, Hammarlund E, DiLeone RJ, Pittenger C, et al. (2019): Orbitofrontal Circuits  
26 Control Multiple Reinforcement-Learning Processes. *Neuron*. 103:734-746.e733.

- 1 73. Werlen E, Shin SL, Gastambide F, Francois J, Tricklebank MD, Marston HM, et al. (2019): Amphetamine  
2 disrupts haemodynamic correlates of prediction errors in nucleus accumbens and orbitofrontal cortex.  
3 *Neuropsychopharmacology*.
- 4 74. Hauser TU, Iannaccone R, Dolan RJ, Ball J, Hättenschwiler J, Drechsler R, et al. (2017): Increased fronto-striatal  
5 reward prediction errors moderate decision making in obsessive-compulsive disorder. *Psychol Med.* 47:1246-1258.
- 6 75. Brem S, Grünblatt E, Drechsler R, Riederer P, Walitza S (2014): The neurobiological link between OCD and  
7 ADHD. *Atten Defic Hyperact Disord.* 6:175-202.
- 8 76. Frodl T, Skokauskas N (2012): Meta-analysis of structural MRI studies in children and adults with attention  
9 deficit hyperactivity disorder indicates treatment effects. *Acta Psychiatr Scand.* 125:114-126.
- 10 77. van Rijn MHC, Bech A, Bouyer J, van den Brand JAJG (2017): Statistical significance versus clinical relevance.  
11 *Nephrol Dial Transplant.* 32:ii6-ii12.
- 12 78. Ferri J, Schmidt J, Hajcak G, Canli T (2016): Emotion regulation and amygdala-precuneus connectivity:  
13 Focusing on attentional deployment. *Cogn Affect Behav Neurosci.* 16:991-1002.
- 14 79. Fitzgerald JM, Klumpp H, Langenecker S, Phan KL (2019): Transdiagnostic neural correlates of volitional  
15 emotion regulation in anxiety and depression. *Depress Anxiety.* 36:453-464.
- 16 80. Goldfarb EV, Chun MM, Phelps EA (2016): Memory-Guided Attention: Independent Contributions of the  
17 Hippocampus and Striatum. *Neuron*.
- 18 81. Rohr CS, Okon-Singer H, Craddock RC, Villringer A, Margulies DS (2013): Affect and the brain's functional  
19 organization: a resting-state connectivity approach. *PLoS One.* 8:e68015.
- 20 82. Rohr CS, Dreyer FR, Aderka IM, Margulies DS, Frisch S, Villringer A, et al. (2015): Individual differences in  
21 common factors of emotional traits and executive functions predict functional connectivity of the amygdala. *Neuroimage.*  
22 120:154-163.
- 23 83. Vossel S, Weidner R, Moos K, Fink GR (2016): Individual attentional selection capacities are reflected in  
24 interhemispheric connectivity of the parietal cortex. *Neuroimage.* 129:148-158.
- 25 84. van Dongen EV, von Rhein D, O'Dwyer L, Franke B, Hartman CA, Heslenfeld DJ, et al. (2015): Distinct effects  
26 of ASD and ADHD symptoms on reward anticipation in participants with ADHD, their unaffected siblings and healthy  
27 controls: a cross-sectional study. *Mol Autism.* 6:48.

- 1 85. Nebel MB, Eloyan A, Nettles CA, Sweeney KL, Ament K, Ward RE, et al. (2015): Intrinsic Visual-Motor  
2 Synchrony Correlates With Social Deficits in Autism. *Biol Psychiatry*.
- 3 86. von Rhein D, Cools R, Zwiers MP, van der Schaaf M, Franke B, Luman M, et al. (2015): Increased neural  
4 responses to reward in adolescents and young adults with attention-deficit/hyperactivity disorder and their unaffected  
5 siblings. *J Am Acad Child Adolesc Psychiatry*. 54:394-402.
- 6 87. Matthews M, Nigg JT, Fair DA (2014): Attention deficit hyperactivity disorder. *Curr Top Behav Neurosci*.  
7 16:235-266.
- 8 88. Fair DA, Bathula D, Nikolas MA, Nigg JT (2012): Distinct neuropsychological subgroups in typically  
9 developing youth inform heterogeneity in children with ADHD. *Proc Natl Acad Sci U S A*. 109:6769-6774.
- 10 89. Nigg JT (2005): Neuropsychologic theory and findings in attention-deficit/hyperactivity disorder: the state of the  
11 field and salient challenges for the coming decade. *Biol Psychiatry*. 57:1424-1435.
- 12 90. Sonuga-Barke EJ, Sergeant JA, Nigg J, Willcutt E (2008): Executive dysfunction and delay aversion in attention  
13 deficit hyperactivity disorder: nosologic and diagnostic implications. *Child Adolesc Psychiatr Clin N Am*. 17:367-384, ix.
- 14 91. Pruim RH, Mennes M, van Rooij D, Llera A, Buitelaar JK, Beckmann CF (2015): ICA-AROMA: A robust ICA-  
15 based strategy for removing motion artifacts from fMRI data. *Neuroimage*. 112:267-277.
- 16 92. Chen B, Xu T, Zhou C, Wang L, Yang N, Wang Z, et al. (2015): Individual Variability and Test-Retest  
17 Reliability Revealed by Ten Repeated Resting-State Brain Scans over One Month. *PLoS One*. 10:e0144963.
- 18 93. Zuo XN, Xing XX (2014): Test-retest reliabilities of resting-state FMRI measurements in human brain functional  
19 connectomics: a systems neuroscience perspective. *Neurosci Biobehav Rev*. 45:100-118.
- 20 94. Enkavi AZ, Eisenberg IW, Bissett PG, Mazza GL, MacKinnon DP, Marsch LA, et al. (2019): Large-scale  
21 analysis of test-retest reliabilities of self-regulation measures. *Proc Natl Acad Sci U S A*. 116:5472-5477.
- 22 95. Birn RM, Molloy EK, Patriat R, Parker T, Meier TB, Kirk GR, et al. (2013): The effect of scan length on the  
23 reliability of resting-state fMRI connectivity estimates. *Neuroimage*. 83:550-558.
- 24 96. Kaufmann T, Alnæs D, Doan NT, Brandt CL, Andreassen OA, Westlye LT (2017): Delayed stabilization and  
25 individualization in connectome development are related to psychiatric disorders. *Nat Neurosci*. 20:513-515.
- 26 97. Murphy K, Fox MD (2017): Towards a consensus regarding global signal regression for resting state functional  
27 connectivity MRI. *Neuroimage*. 154:169-173.

1 98. Power JD, Plitt M, Gotts SJ, Kundu P, Voon V, Bandettini PA, et al. (2018): Ridding fMRI data of motion-  
2 related influences: Removal of signals with distinct spatial and physical bases in multiecho data. *Proc Natl Acad Sci U S*  
3 *A.* 115:E2105-E2114.  
4