

## Seeding COVID-19 across sub-Saharan Africa: an analysis of reported importation events across 40 countries

Laura A Skrip, PhD<sup>1</sup>, Prashanth Selvaraj, PhD<sup>1</sup>, Brittany Hagedorn, MBA<sup>1</sup>, Andre Lin Ouédraogo, PhD<sup>1</sup>, Navideh Noori, PhD<sup>1</sup>, Dina Mistry, PhD<sup>1</sup>, Jamie Bedson, MSSc<sup>2</sup>, Laurent Hébert-Dufresne, PhD<sup>3,4</sup>, Samuel V Scarpino, PhD<sup>5,6,7,8,9</sup>, Benjamin M Althouse, PhD ScM<sup>1,10,11</sup>

<sup>1</sup> Institute for Disease Modeling, Bellevue, WA, USA

<sup>2</sup> Consultant to the Bill & Melinda Gates Foundation, Seattle, WA, USA

<sup>3</sup> Vermont Complex Systems Center, Department of Computer Science, University of Vermont, Burlington, VT, USA

<sup>4</sup> Department of Computer Science, University of Vermont, Burlington, VT, USA

<sup>5</sup> Network Science Institute, Northeastern University, Boston, MA, USA

<sup>6</sup> Department of Marine & Environmental Sciences, Northeastern University, Boston, MA, USA

<sup>7</sup> Department of Physics, Northeastern University, Boston, MA, USA

<sup>8</sup> Department of Health Sciences, Northeastern University, Boston, MA, USA

<sup>9</sup> ISI Foundation, Turin, Italy

<sup>10</sup> University of Washington, Seattle, WA, USA

<sup>11</sup> New Mexico State University, Las Cruces, NM, USA

### Corresponding author:

Benjamin M Althouse  
Institute for Disease Modeling  
3150 139th Ave SE  
Bellevue, WA, 98005  
Phone: (425) 777-9615  
Email: balthouse@idmod.org

### Word count:

**Keywords:** Sub-Saharan Africa, COVID-19 pandemic, infectious disease transmission, disease importation, COVID-19 morbidity and mortality, surveillance reporting, data systems

## Abstract

**Background:** The first case of COVID-19 in sub-Saharan Africa (SSA) was reported by Nigeria on February 27, 2020. While case counts in the entire region remain considerably less than those being reported by individual countries in Europe, Asia, and the Americas, SSA countries remain vulnerable to significant COVID morbidity and mortality due to systemic healthcare weaknesses, less financial resources and infrastructure to address the new crisis, and untreated comorbidities. Variation in preparedness and response capacity as well as in data availability has raised concerns about undetected transmission events.

**Methods:** Confirmed cases reported by SSA countries were line-listed to capture epidemiological details related to early transmission events into and within countries. Data were retrieved from publicly available sources, including institutional websites, situation reports, press releases, and social media accounts, with supplementary details obtained from news articles. A data availability score was calculated for each imported case in terms of how many indicators (sex, age, travel history, date of arrival in country, reporting date of confirmation, and how detected) could be identified. We assessed the relationship between time to first importation and overall Global Health Security Index (GHSI) using Cox regression. K-means clustering grouped countries according to healthcare capacity and health and demographic risk factors.

**Findings:** A total of 2417 confirmed cases of COVID-19 were reported by 40 countries in sub-Saharan Africa during the 30 days after the first known introduction to the region. Out of the 876 cases for which information was publicly available, 677 (77.3%) were considered importation events. At the regional level, imported cases tended to be male (67.3%), were a median 43.0 years old (Range: 6 weeks - 88 years), and most frequently had recent travel history from Europe (43.3%). The median time to reporting an introduction was 19 days; a country's time to report its first importation was not related to GHSI. Mean data availability scores were lowest for countries that had, on average, the highest case fatality rates, lowest healthcare capacity, and highest probability of premature death due to non-communicable diseases.

**Interpretation:** Countries with systemic, demographic, and pre-existing health vulnerabilities to severe COVID-related morbidity and mortality are less likely to report any cases or are reporting with limited public availability of information. Reporting of information on COVID detection and response efforts, as well as on trends in non-COVID illness and care-seeking behavior, is critical to assessing direct and indirect consequences and capacity needs in resource-constrained settings. Such assessments aid in the ability to make data-driven decisions about interventions, country priorities, and risk assessment.

## Research in Context

### Evidence before this study

We reviewed PubMed, Google Scholar, medRxiv, bioRxiv, and arXiv for published articles and preprints on the importation of coronavirus disease 2019 (COVID-19) into the sub-Saharan Africa region. Search terms included “coronavirus”, “COVID-19”, “importation”, and “sub-Saharan Africa”, up to March 31, 2020. One modeling study considered the detection capacity of African countries to COVID-19 importations using established indicators of preparedness and vulnerability.<sup>1</sup> Seroprevalence and genomic studies of Middle East respiratory coronavirus and other epidemic-prone diseases have been conducted to investigate sources of introduction into human and non-human hosts in Africa. However, to date, no analyses of line-listed epidemiological data on importations into Africa were identified for COVID-19.

### Added value of this study

We line-listed epidemiological indicators for the initial cases reported by 40 countries in SSA by reviewing and synthesizing information provided by official institutional outlets and news sources. We hypothesized that, on a country level, the numbers of reported cases as well as the availability of information about them, would be indicators of countries’ preparedness and detection systems, such that identifying countries with poor reporting could highlight those most vulnerable to high morbidity and mortality due to unidentified transmission. Our findings suggest that countries with the largest proportions of untreated comorbidities, as measured by probability of premature death due to non-communicable diseases, and the fewest healthcare resources tend to not be reporting any cases (as of March 27th) or reporting cases with limited available information.

### Implications of all the available evidence

Accurate and available information on initial cases in seeding local outbreaks is key to projecting case counts and assessing the potential impact of intervention approaches. Countries with limited available data for the seeding events could suggest vulnerabilities related to detection, overall preparedness, and reporting. Highlighting these gaps using empirical data and relating them to COVID-specific parameters for morbidity and mortality provides a measure of vulnerability within a region that overall has been considered at high risk for catastrophic public health threats.

## Introduction

The Severe Acute Respiratory Syndrome coronavirus 2 (SARS-CoV 2) virus has spread feverishly across the globe, causing hundreds of thousands of coronavirus 2019 (COVID-19) cases and tens of thousands of deaths as of late March 2020.<sup>2</sup> While detection of cases has centered on Asia, Europe, and the United States, there so far seems to be a paucity of cases across the continent of Africa, despite regular air traffic in and out, especially that resulting from strong economic and development ties with China.<sup>3</sup> This lack of cases may be due to inadequate testing capacity.<sup>4</sup> It is critical to understand how SARS-CoV2 is introduced into countries<sup>1,5</sup> in order to anticipate onward transmission of the virus and subsequent risk of infection among population subgroups most vulnerable to severe morbidity and mortality.<sup>6</sup>

Africa may be uniquely positioned to have the most severe and under-detected outcomes related to COVID-19 infection.<sup>7</sup> The continent's countries are among those most at-risk of widespread disease threats, per several indices of epidemic preparedness. The World Health Organization's (WHO) State Party Self-Assessment Annual Reporting (SPAR) database assigns scores to countries to assess capacities needed to detect, assess, notify, report, and respond to public health risk and acute events of domestic and international concern.<sup>1,8</sup> Similarly, the Infectious Disease Vulnerability Index (IDVI) developed by the RAND Corporation and the Global Health Security Index (GHSI) by Johns Hopkins University<sup>9</sup> use a variety of healthcare, economic, demographic, and political factors to assess the vulnerability of a country to prevent or contain an infectious disease outbreak.<sup>10</sup> Using such indices, recent work has shown most of Sub-Saharan Africa (SSA) to be at risk of COVID-19 importation and at reduced capacity to contain outbreaks due to lack of economic and medical resources.<sup>1</sup> While it appears that the age groups at highest risk of severe COVID-19 disease and death (those >60 years old)<sup>6,11</sup> may be proportionately less in many SSA countries than in other parts of the world, the populations in many of these countries are at increased risk of having untreated chronic conditions due to weak health systems.<sup>12</sup> As a result, individuals with cardiovascular diseases or diabetes,<sup>13,14</sup> sickle-cell disease, or conditions associated with immunosuppression,<sup>15,16</sup> which exacerbate the immune response to SARS-CoV2 infection, may contribute to higher-than-expected mortality for younger age groups.

Within the first 30 days of the first introduction into the region on February 27, 2020, imported seeding events have occurred almost universally in SSA; however, capacity for detection, reporting, and control efforts varies.<sup>1,9</sup> Across the region and with ranging degrees of enforcement,<sup>17,18</sup> countries have implemented suites of preventative interventions, including school closures,<sup>19</sup> curfews, and other social distancing measures,<sup>20</sup> as well as border and airport closures.<sup>21</sup> Countries reporting high numbers of cases since the original seeding in SSA were hypothesized to have stronger detection/preparedness systems, such as South Africa and Rwanda. Lower observed case counts or delayed reporting of initial cases, relative to the date of first seeding in SSA, could be due to poor detection. It is the goal of this work to systematically collect and present information on COVID-19 cases in all affected countries in SSA during the first several weeks since known importation, with the aim of giving starting points for prediction of onward transmission. We present reported information in the context of

countries' pandemic preparedness and COVID-specific vulnerability to underscore the risk of undetected transmission -- and therefore significant morbidity and mortality -- in countries with low numbers of recorded cases to date.

## Methods

A line list of confirmed cases in 49 SSA countries (Library of Congress list,<sup>22</sup> excluding territories) was developed using data disseminated by national governmental institutions (*i.e.*, ministries of health and public health institutes) through their websites, press releases, and social media accounts, and supplemented with information from news outlets (Supplementary Table). Data on sex, age, travel history (including travel locations and dates of entry into the country where case confirmation occurred), date of reported confirmation, whether a case was due to importation or secondary transmission (both known and community transmission), and information on how the case was detected (*e.g.*, active surveillance monitoring or self-presentation) were recorded for each case. We searched using keywords such as 'COVID', 'Ministry of Health', 'situation report', 'press release', and/or the date in the language of the respective countries, although more specific searches in news outlets were done in English. As information was collected from multiple sources, the daily case totals per country in the line list were compared with country-reported totals and/or the WHO situation report totals.<sup>23</sup> The line list is provided as Supplementary Material.

Reported confirmed cases were assumed to be imported when classified as such by national institutions, or when case information included evidence of recent travel history. For countries with limited data available, information on whether cases were imported or due to local transmission was evaluated from the aggregate information in daily WHO situation reports, when feasible. Cases with uncertain travel history or not enough information to determine their importation status were included in the line list but not given a status.

Imported cases were described in terms of sex, 10-year age categories, and time between arrival in country and date that case confirmation was reported. Temporal trends in the frequency of importation events across SSA and in the continents from which they originated were evaluated.

*Preparedness and reporting.* The availability of publicly reported data was assessed in terms of the average number of indicators which were reported or could be inferred for each imported case. The indicators included were sex, age, date of case confirmation, travel history, date of arrival in the country, and whether detection was due to active monitoring or self-presentation. Availability was assessed for the first 10 imported cases in each country (or for all cases in countries with fewer than 10 cases reported as of March 27, 2020). To consider changes in availability of individual-level information with increasing incidence, availability was assessed for the second and third sets of 10 imported cases in countries with more than 10 reported importation events.

The relationship between country-level pandemic preparedness and case reporting rates was assessed. A Poisson generalized linear model was applied to relate overall GHSI with case counts after adjusting for days since first reported importation as an offset. We also used a Cox proportional hazards model to consider the daily probability of a country reporting any case since the first introduction into the region, after adjusting for the country's overall GHSI and flight traffic. Flight traffic was included as the annual number of passengers carried by air transport (in billions).<sup>24</sup> Data for the most recent year available was included for countries with information from 2016 until present. Thirteen out of the 49 SSA countries did not have recent flight traffic data and were excluded from the adjusted Cox model.

*Relationship between risk of severe morbidity and death and reporting.* K-means clustering was conducted to identify groups of countries based on risk factors for high rates of severe morbidity and mortality due to COVID-19 or lack of capacity to provide care. Factors included number of healthcare workers per 10,000 population,<sup>25,26</sup> number of hospital beds per 1,000 population,<sup>27</sup> proportion of population 60 years or older, and probability of dying between age 30 and exact age 70 from any of cardiovascular disease, cancer, diabetes, or chronic respiratory disease.<sup>28</sup> Due to limited data available for Western Sahara, it was not included in the cluster analysis. The probability of a country having any case, average data availability score for first 10 importation events, and average cumulative reported cases per 100,000 population were calculated for each of the clusters.

## Results

*Overview.* Out of the 2417 cases listed between February 27 and March 27, 2020, individual-level information on the status (*i.e.*, importation or not) for 1541 reported cases could not be determined from available information. Among the individuals with known status, 677 importation events were identified (677/876, 77.3%), while 199 cases were listed as being contacts of known travelers or as a result of unexplained community transmission (199/876, 22.7%). Imported cases were majority male (226/336, 67.3%) and were a median 43.0 years old (Range: 6 weeks - 88 years) (Figure 1 & Table 1). Cases due to local transmission were majority female (41/74, 55.4%) and were a median 34.0 years old (10 months - 105 years). For imported cases, time between arrival into the country and reporting of the confirmed case status ranged from 0 to 40 days (median: 5, IQR: 3-8) (Figure 2).

*Space-time trends.* Two SSA countries reported introduction by March 3<sup>rd</sup> (2/49, 4.1%), eight countries by March 11<sup>th</sup> (8/49, 16.3%), 30 total countries by March 19<sup>th</sup> (30/49, 61.2%), and 40 total countries as of March 27<sup>th</sup> (40/49, 81.6%) (Figure 3). The majority of importation events that could be line-listed were reported by South Africa (198/677, 29.2%), Senegal (62/677, 9.2%), Ghana (52/677, 7.7%), and Rwanda (43/677, 6.4%). 65.6% of importation events (442/677) had travel history available. Most imported cases reported recent travel from Europe (292/442, 66.1%), with fewer reports of travel to Asia (87/442, 19.7%), the Americas (32/442, 7.2%), other affected countries in Africa (28/442, 6.3%), or Oceania (1/442, 0.2%) (Figure 4). Two cases with travel history reported sea travel via a cruise on which they worked (2/442, 0.4%).



*Preparedness and reporting.* On average, 3.58 out of the six indicators were available for the first 10 imported cases (or total number of reported importation events for countries with less than 10 total) per country (SD: 1.36, Range: 1.0-6.0). For the 13 countries with more than 10 identified importation events, 2.61 indicators were available for the subsequent 10 importation events (SD: 1.32, Range: 1.0-4.4); an average of 2.50 indicators were available for the next set of 10 importation events in the eight countries reporting over 20 (SD: 1.47, Range: 1.0-4.6).

The median time until reporting an introduction for a country in SSA was 19 days after the first importation into the region (95% CI: 17-23 days). Time to first reported importation was not significantly associated with GHSI, with (HR: 1.00, 95% CI: 0.99, 1.02,  $p=0.994$ ) or without adjustment (HR: 1.01, 95% CI: 0.99, 1.02,  $p=0.070$ ) for scaled number of flight passengers per year. The hazard of reporting an introduction was 14.5% higher with each billion increase in the number of annual air traffic passengers (95% CI: 3.61%, 26.6%,  $p=0.008$ ), after adjusting for GHSI.

Total case counts reported as of March 27th were related to GHSI. For each 10-unit increase in overall GHSI, cumulative reported case counts increased by a factor of 1.49, after controlling for the number of days since a country reported its first importation event (95% CI: 1.47-1.51),  $p<0.001$ ).

*Relationship between risk of severe morbidity and death, and reporting.* Assessment of within-cluster sum of squares suggested the use of five clusters for K-means analysis. Healthcare capacity factors (HCWs and beds per capita), along with the proportion of populations aged 60 and above were found to be more significantly represented within the clustering (Supplementary Figure). The clusters in Table 2 are sorted by the average proportion of the population aged 60 years and over, given its established relevance to COVID morbidity and mortality. In general, countries with larger proportions of their populations over 60 years (Clusters D and E) had higher healthcare capacity (Figure 5A), in terms of number of HCWs and hospital beds per capita. On average, cluster E countries have the largest proportion of their populations in the over 60 age range and high rates of premature death due to NCDs but also higher capacity for detecting and treating, than other clusters (Figure 5B). Despite having relatively low proportion of their populations over 60 years, countries in cluster C were considered at high risk since they tended to have fewer healthcare workers and hospital beds per capita, and a higher probability of premature death due to non-communicable diseases (NCDs) than the countries in the other four clusters (Table 2). Four of the eight countries not yet reporting cases as of March 27th (Burundi, Comoros, Lesotho, and Sierra Leone) fell into Cluster C. Countries in this cluster that had at least one imported case had a lower mean data availability score (mean=2.97) than countries in other clusters (range of means: 3.20-5.11).

## Discussion

We describe the seeding events that have led to over 2400 cases reported within 30 days of the first known introduction into the sub-Saharan African region. Most documented importation

events were associated with recent travel history to Europe. As of March 30th, eight countries -- Burkina Faso, Cameroon, Côte d'Ivoire, Ghana, Mauritius, Nigeria, Senegal, South Africa -- had reported at least 100 confirmed cases each, while seven countries had reported no cases (Botswana reported its first case on March 30th).<sup>29</sup> Regional heterogeneity in reported case counts suggests that higher incidence in some places may be due in a large part to preparedness and current surveillance efforts, particularly around air travel passengers, and not solely due to more transmission. Relatedly, lower incidence in other countries may be due to reduced international air travel and the inability to surveil all air passengers and informal border crossings. Overall, importations into a country may take weeks or months to seed community spread at noticeable levels.<sup>30</sup> Many importations and subsequent transmission will go unnoticed without active monitoring through quarantine and testing to identify infections among travelers<sup>31</sup>, and risk communication directed at population subgroups most likely interacting with international travelers to encourage vigilance around symptom onset.

In terms of assessing community spread, lack of testing capacity and decisions to test upon symptom onset for quarantined individuals<sup>32</sup> could also be misconstrued for lower incidence. More worryingly, among individuals with no recent travel history, conflation of disease symptoms may lead to lack of timely health seeking and reduced access to healthcare could prove detrimental as the disease progresses and transmission increases.<sup>33</sup> All of these factors could contribute to lower incidence being observed and reported. This in turn contributes to a false sense of the SSA region being less vulnerable to COVID-19 infection -- an argument that has been largely focused around age distribution alone -- when the sub-Saharan population may in fact be more vulnerable given the number of endemic, infectious and immunocompromising diseases,<sup>16</sup> as well as increasing non-communicable conditions,<sup>12</sup> and poor critical care infrastructure in the region.

We found that existing preparedness indicators, namely the GHSI, was associated with the number of cases reported but not with risk of earlier introduction. The sensitivity of these indicators to capturing COVID-specific differences in countries' vulnerability to widespread transmission warrants further investigation and analysis, accounting for the different efforts being implemented across the continent to prevent disease spread.<sup>18,21</sup> Our clustering analysis suggests that countries with fewer beds and healthcare workers and higher probabilities of premature death due to NCDs (thereby putting them at risk for severe COVID-19 morbidity and mortality) are either not reporting any cases, or are providing less information about reported cases. Factors around population demographics and comorbidities uniquely relevant to COVID-19 morbidity and mortality may not be fully captured by the GHSI or other epidemic preparedness indices. The situation in SSA warrants context-specific consideration in terms of policies around timing of control efforts relative to reported case counts.

The COVID-19 situation is among the first pandemics in which high-capacity computing technology can be leveraged to quickly (and responsibly) disseminate large-scale information globally.<sup>34,35</sup> Information on importation events was extracted from online reporting platforms, such as situation reports, press releases from ministries of health, and dashboards, although more often, the data were being reported via social media accounts of political leaders and



governmental institutions. This reflects a growing trend intended to better connect the populations they serve with updates on the situation locally and globally.<sup>36</sup>

In addition to informing the general population, use of online media to share data on cases is facilitating rapid efforts at better understanding the epidemiology of the disease and its control. Notably, information from health agencies has guided mathematical modeling efforts to project case counts and assess potential impact of interventions, such as social distancing.<sup>37–39</sup> The robustness of modeling efforts to inform decision-making depends on the quality of data used to develop them. Especially at the start of an outbreak, it is important to distinguish between importations and community spread among all recorded cases in order to capture the growth of the epidemic accurately.

Data needs may be overwhelming local teams, as was observed with the decreasing data availability scores over each 10 subsequent imported cases. This reflects competing priorities and resources, not uncommon throughout the world, and could lead to delays in providing information to decision makers. The significance of such data extends beyond information on direct consequences of COVID-19 and includes indirect consequences -- for example, if data from routine surveillance and immunization activities or care-seeking behaviors become less available to capture detrimental impacts upon routine care, as has been documented during previous large-scale outbreaks.<sup>40–42</sup> Support to data teams could enhance data collection so that modeling and other analyses can be done effectively and efficiently. Investing in this capacity could have long-term benefits to countries particularly those in SSA.

*Limitations.* While we attempted to search all available sources, data included in our line list are likely not exhaustive. We also recognize that news sources used to supplement official sources may be less reliable in the information they provide. Information was extracted from available text material only. Videos of press conferences or radio announcements were not considered unless their content appeared in published press articles. By opting to maintain an individual-level database, we were unable to reflect some information provided by national authorities in aggregate form. Where possible, we reconciled totals across individual entries with aggregate information or adjusted for the latter, such as with the importation percentages for South Africa, Senegal, and Mauritius. Furthermore, data were not reported consistently for some indicators. For instance, we note that data being disseminated to the public are often for purposes of information sharing and education rather than to guide detailed decision making. Moreover, with increasing incidence, less information is provided publicly about cases at the individual-level, leading to lack of information on sex, age, and status (importation versus local transmission) for the majority of cases in South Africa, for instance. This precluded our investigation into whether cases with unclassified status may resemble known importations versus locally transmitted cases.

## Conclusion

The inevitable introduction of COVID-19 into sub-Saharan Africa has led to variation in the incidence and reported ratio of imported versus locally infected cases. The availability and

quality of publicly released information also varies significantly. Countries with systemic, demographic, and pre-existing health vulnerabilities to severe COVID-related morbidity and mortality are less likely to report any cases or are reporting with limited public availability of information. Lack of information on imported cases should signal the potential for undetected transmission with consequential direct and indirect implications for the population and healthcare systems in these countries. Aggressive action based on an enhanced understanding of importations and the risks associated is warranted.

### **Acknowledgments**

We acknowledge Kurt Frey for help in collecting data and Assaf Oron for helpful comments on the manuscript. We also acknowledge the tireless efforts of country teams to collect and disseminate information as a way to inform local and global stakeholders.

### **Author contributions**

LAS, PS, BH, ALO, NN, and DM collected data. LAS conducted the analysis. LAS, PS, and BMA wrote the first draft of the manuscript. All authors contributed intellectually and made contributions to the manuscript text.

### **Funding**

LAS, PS, BH, ALO, NN, DM, and BMA were funded by Bill & Melinda Gates through the Global Good Fund. LHD acknowledges support from the National Institutes of Health 1P20 GM125498-01 Centers of Biomedical Research Excellence Award. SVS is supported by startup funds provided by Northeastern University. The funders had no role in study design, data collection and analysis, decision to publish, or preparation of the manuscript.

### **Conflict of Interest**

The authors declare no conflicts of interest.

## References Cited

- 1 Gilbert M, Pullano G, Pinotti F, *et al.* Preparedness and vulnerability of African countries against importations of COVID-19: a modelling study. *Lancet* 2020; **395**: 871–7.
- 2 Johns Hopkins Coronavirus Resource Center. Johns Hopkins Coronavirus Resource Center. <https://coronavirus.jhu.edu/map.html> (accessed March 29, 2020).
- 3 Dance of the lions and dragons JUNE 2017 How are Africa and China engaging, and how will the partnership evolve? McKinsey & Company, 2017 <https://www.mckinsey.com/featured-insights/middle-east-and-africa/the-closest-look-yet-at-chinese-economic-engagement-in-africa> (accessed March 30, 2020).
- 4 Africa has 1.2 billion people and only six labs that can test for coronavirus. How quickly can they ramp up? The Washington Post. 2020; published online Feb 5. [https://www.washingtonpost.com/world/africa/africa-has-12-billion-people-and-only-six-labs-that-can-test-for-coronavirus-how-quickly-can-they-ramp-up/2020/02/05/68af96de-4758-11ea-91ab-ce439aa5c7c1\\_story.html](https://www.washingtonpost.com/world/africa/africa-has-12-billion-people-and-only-six-labs-that-can-test-for-coronavirus-how-quickly-can-they-ramp-up/2020/02/05/68af96de-4758-11ea-91ab-ce439aa5c7c1_story.html) (accessed March 30, 2020).
- 5 Candido DDS, Watts A, Abade L, *et al.* Routes for COVID-19 importation in Brazil. *J Travel Med* 2020; published online March 23. DOI:10.1093/jtm/taaa042.
- 6 Wu Z, McGoogan JM. Characteristics of and important lessons from the coronavirus disease 2019 (COVID-19) outbreak in China: summary of a report of 72 314 cases from the Chinese Center for Disease Control and Prevention. *JAMA* 2020. <https://jamanetwork.com/journals/jama/article-abstract/2762130>.
- 7 ‘A ticking time bomb’: Scientists worry about coronavirus spread in Africa. Science | AAAS. 2020; published online March 15. <https://www.sciencemag.org/news/2020/03/ticking-time-bomb-scientists-worry-about-coronavirus-spread-africa> (accessed March 31, 2020).
- 8 e-SPAR Public. <https://extranet.who.int/e-spar> (accessed March 27, 2020).
- 9 Global Health Security Index, Building Collective Action and Accountability. Center for Health Security, Johns Hopkins Bloomberg School of Public Health, 2019 <https://www.ghsindex.org/report-model/>.
- 10 Moore M, Gelfeld B, Okunogbe A, Christopher P. Identifying Future Disease Hot Spots: Infectious Disease Vulnerability Index. Rand Corporation, 2016 <https://play.google.com/store/books/details?id=YNO1DQAAQBAJ>.
- 11 Guan W-J, Ni Z-Y, Hu Y, *et al.* Clinical Characteristics of Coronavirus Disease 2019 in China. *N Engl J Med* 2020; published online Feb 28. DOI:10.1056/NEJMoa2002032.
- 12 de-Graft Aikins A, Unwin N, Agyemang C, Allotey P, Campbell C, Arhinful D. Tackling Africa’s chronic disease burden: from the local to the global. *Global Health* 2010; **6**: 5.
- 13 Azevedo M, Alla S. Diabetes in sub-saharan Africa: kenya, mali, mozambique, Nigeria, South Africa and zambia. *Int J Diabetes Dev Ctries* 2008; **28**: 101–8.
- 14 Atun R, Davies JI, Gale EAM, *et al.* Diabetes in sub-Saharan Africa: from clinical care to health policy. *Lancet Diabetes Endocrinol* 2017; **5**: 622–67.
- 15 Mbithi A, Gichangi A, Kim AA, *et al.* Tuberculosis and HIV at the national level in Kenya: results from the Second Kenya AIDS Indicator Survey. *J Acquir Immune Defic Syndr* 2014; **66 Suppl 1**: S106–15.

- 16 Murray CJL, Ortblad KF, Guinovart C, *et al.* Global, regional, and national incidence and mortality for HIV, tuberculosis, and malaria during 1990-2013: a systematic analysis for the Global Burden of Disease Study 2013. *Lancet* 2014; **384**: 1005–70.
- 17 Jazeera A. Kenya police under fire over ‘excessive force’ as curfew begins. Al Jazeera. <https://www.aljazeera.com/news/2020/03/kenya-police-fire-excessive-force-curfew-begins-200328101357933.html> (accessed March 30, 2020).
- 18 Coronavirus Prevention Measures Turn Violent in Parts of Africa as Nations Go Into Lockdown. *Time* 2020; published online March 28. <https://time.com/5811945/coronavirus-prevention-africa/> (accessed March 30, 2020).
- 19 COVID-19 Educational Disruption and Response. UNESCO. 2020; published online March 4. <https://en.unesco.org/themes/education-emergencies/coronavirus-school-closures> (accessed March 30, 2020).
- 20 Rfi COW. Africa: SA in lockdown, curfews in the west as continent braces for Covid-19 wave. RFI. 2020; published online March 24. <http://www.rfi.fr/en/africa/20200324-lockdown-curfew-restrictions-africa-coronavirus-covid-19> (accessed March 30, 2020).
- 21 Salcedo A, Cherelus G. Coronavirus Travel Restrictions, Across the Globe. The New York Times. 2020; published online March 15. <https://www.nytimes.com/article/coronavirus-travel-restrictions.html> (accessed March 30, 2020).
- 22 The Library of Congress. List of Sub-Saharan African Countries. 2010; published online Nov 15. <https://www.loc.gov/rr/amed/guide/afr-countrylist.html> (accessed March 27, 2020).
- 23 World Health Organization. Coronavirus disease 2019 (COVID-19) Situation Report. 2020 [https://www.who.int/docs/default-source/coronaviruse/situation-reports/20200327-sitrep-67-covid-19.pdf?sfvrsn=b65f68eb\\_4](https://www.who.int/docs/default-source/coronaviruse/situation-reports/20200327-sitrep-67-covid-19.pdf?sfvrsn=b65f68eb_4).
- 24 Air transport, passengers carried | Data. <https://data.worldbank.org/indicator/is.air.psg> (accessed March 30, 2020).
- 25 WHO | Density of medical doctors (total number per 10 000 population, latest available year). 2019; published online March 5. [https://www.who.int/gho/health\\_workforce/doctors\\_density/en/](https://www.who.int/gho/health_workforce/doctors_density/en/) (accessed March 30, 2020).
- 26 WHO | Density of nursing and midwifery personnel (total number per 10 000 population, latest available year). 2019; published online March 5. [https://www.who.int/gho/health\\_workforce/nursing\\_midwifery\\_density/en/](https://www.who.int/gho/health_workforce/nursing_midwifery_density/en/) (accessed March 30, 2020).
- 27 Indicator Metadata Registry Details. <https://www.who.int/data/gho/indicator-metadata-registry/imr-details/3119> (accessed March 30, 2020).
- 28 GHO | By indicator | Probability (%) of dying between age 30 and exact age 70 from any of cardiovascular disease, cancer, diabetes, or chronic respiratory disease (Global strategy for women's, children's and adolescents' health). <https://apps.who.int/gho/data/node.imr.NCDMORT3070?lang=en> (accessed March 30, 2020).
- 29 Novel Coronavirus (2019-nCoV) situation reports. <https://www.who.int/emergencies/diseases/novel-coronavirus-2019/situation-reports> (accessed March 30, 2020).
- 30 Chinazzi M, Davis JT, Ajelli M, *et al.* The effect of travel restrictions on the spread of the 2019 novel coronavirus (COVID-19) outbreak. *Science* 2020; published online March 6.

DOI:10.1126/science.aba9757.

- 31 Updated WHO recommendations for international traffic in relation to COVID-19 outbreak. <https://www.who.int/news-room/articles-detail/updated-who-recommendations-for-international-traffic-in-relation-to-covid-19-outbreak> (accessed April 1, 2020).
- 32 Srikrishna D, Dhillon RS, Beier D. We Need a Cheap Way to Diagnose Coronavirus. *Harvard Business Review* 2020; published online Feb 26. <https://hbr.org/2020/02/we-need-a-cheap-way-to-diagnose-coronavirus> (accessed April 1, 2020).
- 33 Burman CJ. Re-Contextualizing Medical Pluralism in South Africa: a Research Schema for Indigenous Decision Making. *Systemic Practice and Action Research* 2019; **32**: 379–402.
- 34 Dong E, Du H, Gardner L. An interactive web-based dashboard to track COVID-19 in real time. *Lancet Infect Dis* 2020; published online Feb 19. DOI:10.1016/S1473-3099(20)30120-1.
- 35 Ienca M, Vayena E. On the responsible use of digital data to tackle the COVID-19 pandemic. *Nat Med* 2020; published online March 27. DOI:10.1038/s41591-020-0832-5.
- 36 African leaders respond to coronavirus... on Twitter - Atlantic Council. Atlantic Council. 2020; published online March 24. <https://atlanticcouncil.org/blogs/africasource/african-leaders-respond-to-coronavirus-on-twitter/> (accessed March 28, 2020).
- 37 IHME | COVID-19 Projections. Institute for Health Metrics and Evaluation. <https://covid19.healthdata.org/projections> (accessed March 30, 2020).
- 38 Hellewell J, Abbott S, Gimma A, *et al.* Feasibility of controlling COVID-19 outbreaks by isolation of cases and contacts. *Lancet Glob Health* 2020; **8**: e488–96.
- 39 Koo JR, Cook AR, Park M, *et al.* Interventions to mitigate early spread of SARS-CoV-2 in Singapore: a modelling study. *Lancet Infect Dis* 2020; published online March 23. DOI:10.1016/S1473-3099(20)30162-6.
- 40 Sun X, Samba TT, Yao J, *et al.* Impact of the Ebola outbreak on routine immunization in western area, Sierra Leone - a field survey from an Ebola epidemic area. *BMC Public Health* 2017; **17**: 363.
- 41 NewsCAP: Measles claims more than twice as many lives as Ebola in the Congo. *Am J Nurs* 2020; **120**: 17.
- 42 Alyssa S. Parpia, Martial L. Ndeffo-Mbah, Natasha S. Wenzel, Alison P. Galvani. Effects of Response to 2014–2015 Ebola Outbreak on Deaths from Malaria, HIV/AIDS, and Tuberculosis, West Africa. *Emerging Infectious Disease journal* 2016; **22**: 433.

## Figure captions

**Figure 1.** Age-sex distribution of confirmed cases of COVID-19 in sub-Saharan Africa by status (imported cases, cases due to local transmission, and cases with status unavailable). Only cases with both age and sex data are reflected.

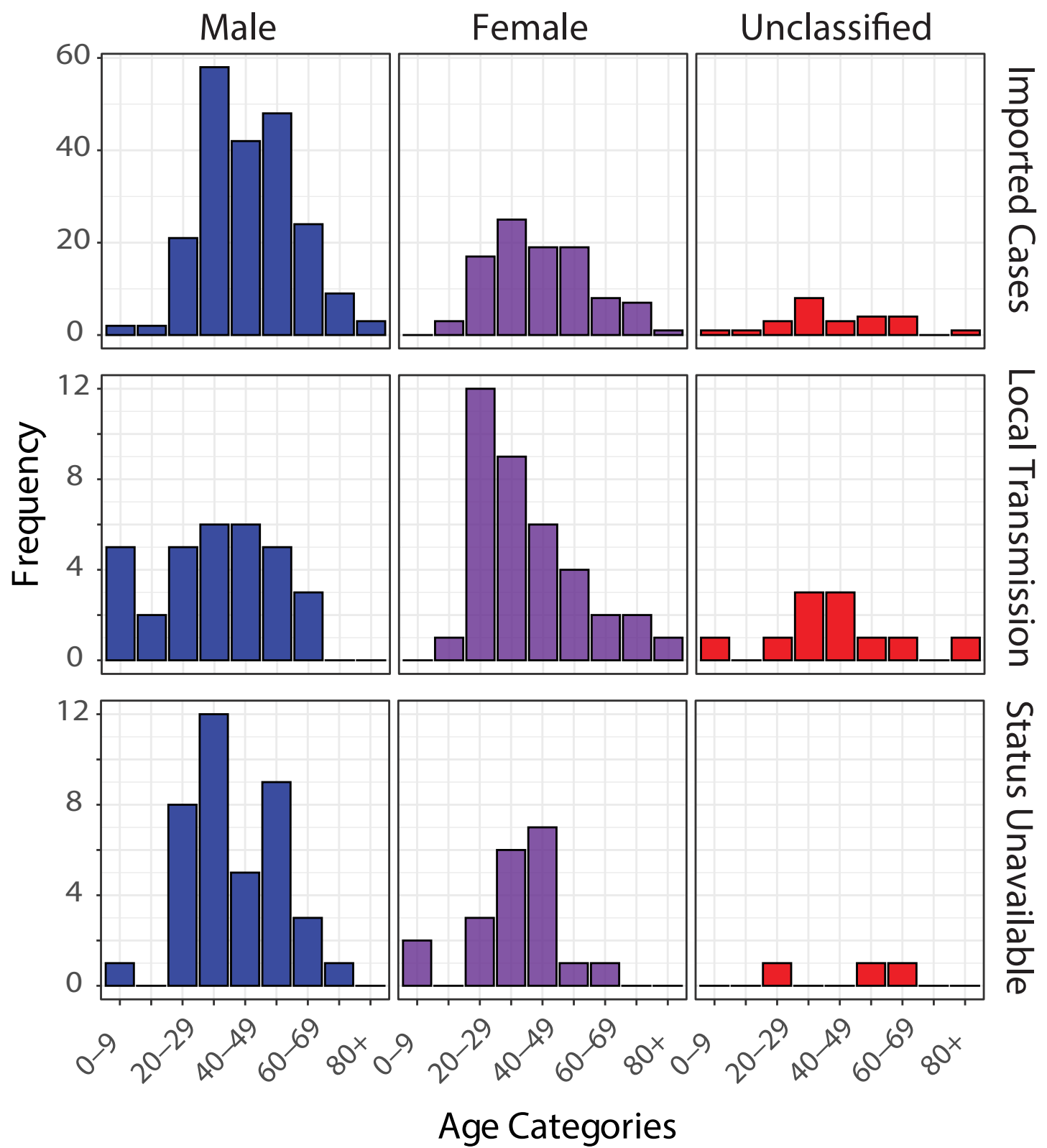
**Figure 2.** Distribution of time between arrival in country and reporting of case confirmation status

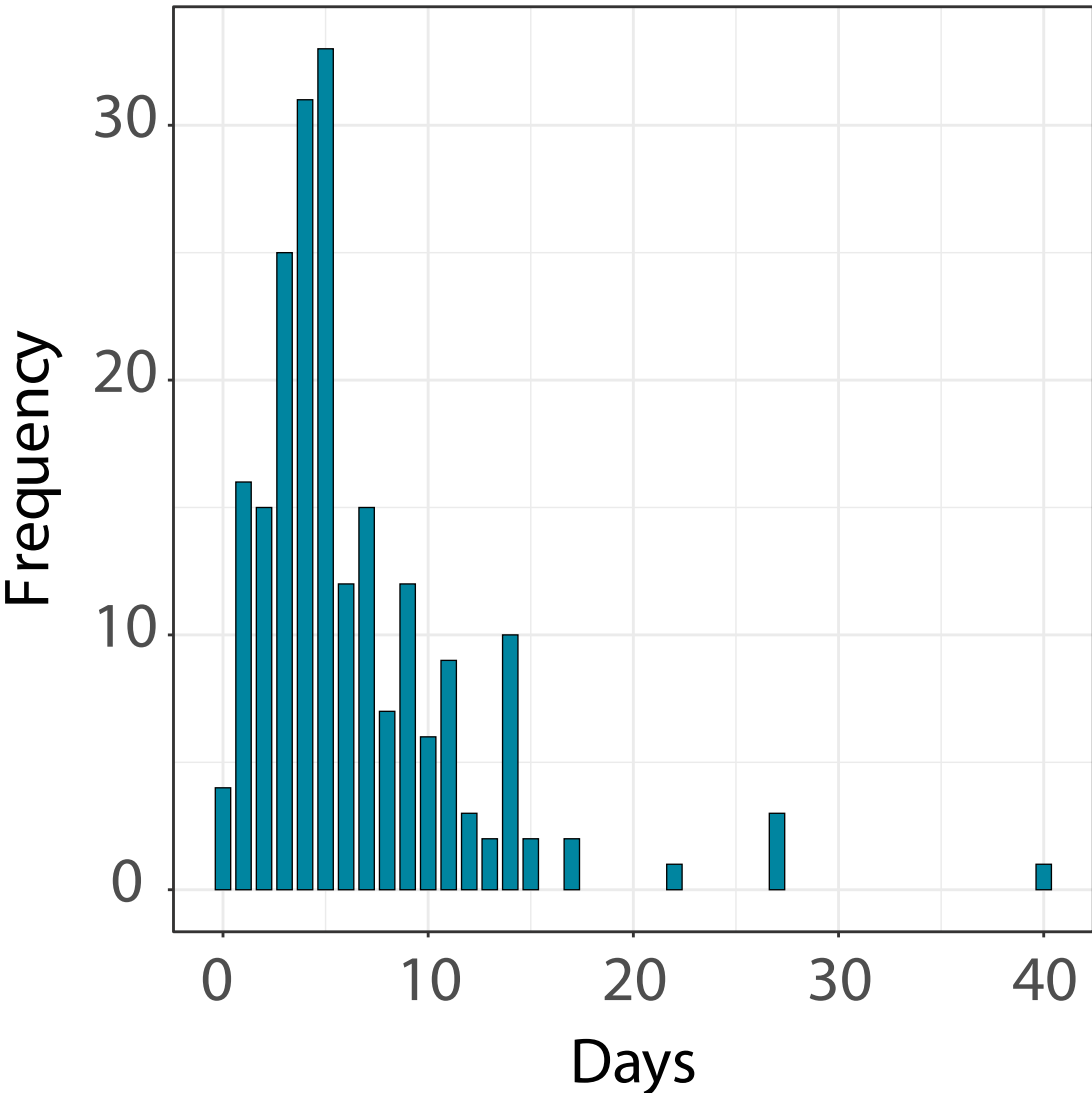
**Figure 3.** (A) Cumulative numbers of imported cases for which status (importation v. local) is known, by week; (B) Overall percentage of cases (with known status) that are importations; and Panel (C) Number of cases for which status could not be determined from available data. Mauritius and Seychelles are marked by a triangle and square, respectively, given the scale of the maps. Note: In the fourth time period, importation ratios in (B) calculated from the line list were adjusted to reflect aggregate information in three countries for which it was available (South Africa, Senegal, and Mauritius).

**Figure 4.** Travel history of imported cases by country of residence and continent of travel, for cases with documented travel history.. Multiple entries are shown for confirmed cases with a reported travel itinerary that included two or more continents.

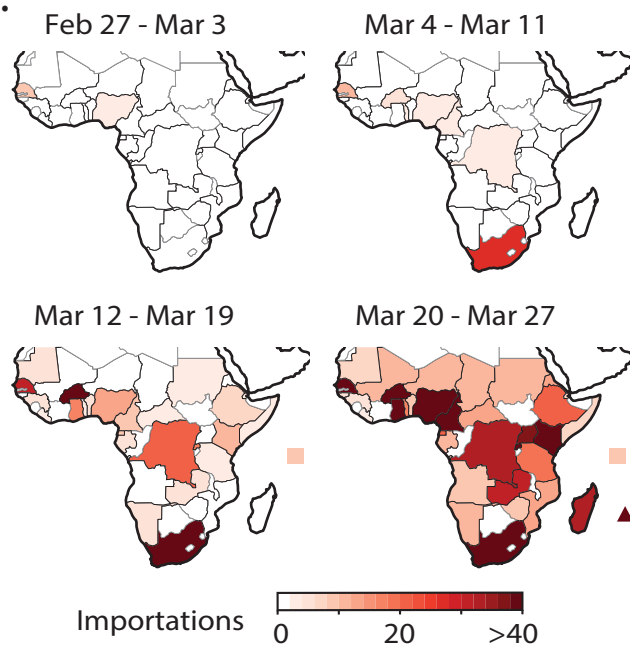
**Figure 5.** Interplay of Age, Healthcare Capacity, and Death due to Non-Communicable Disease in Sub-Saharan Africa countries. Countries with younger populations also have (A) less healthcare capacity, in terms of healthcare workers (physicians, nurses, and midwives) per 10,000 population and (B) demonstrate a wide range in terms of probability of premature death due to non-communicable comorbidities.



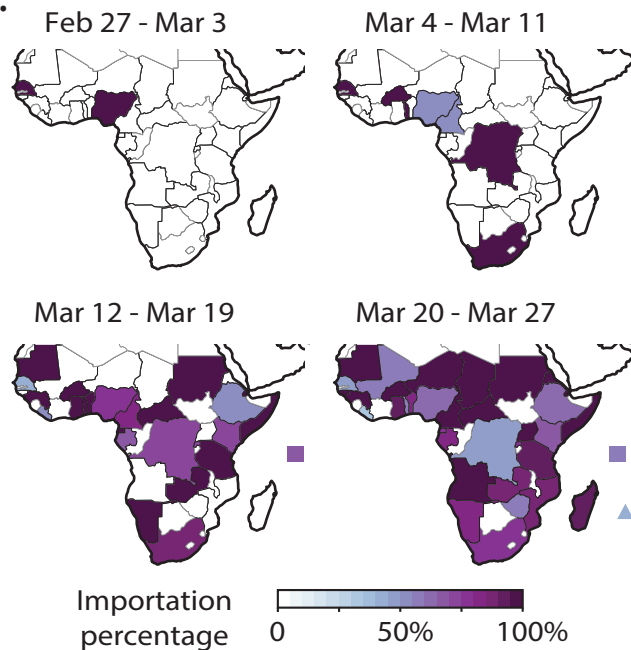




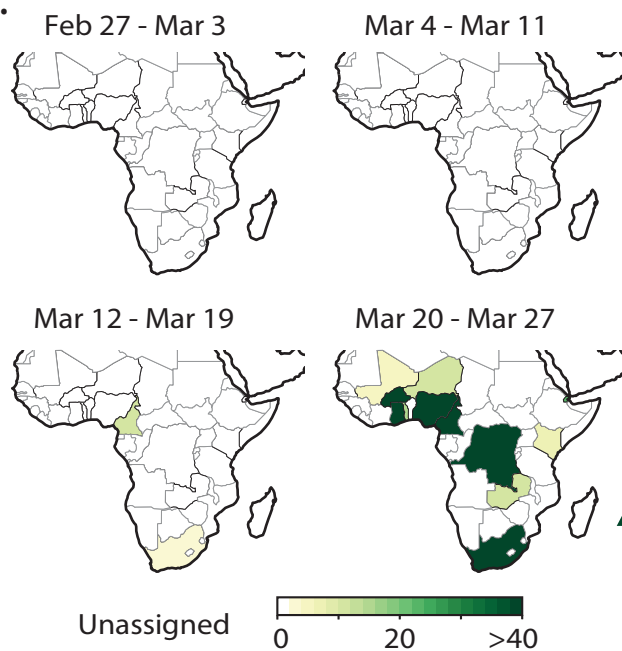
A.



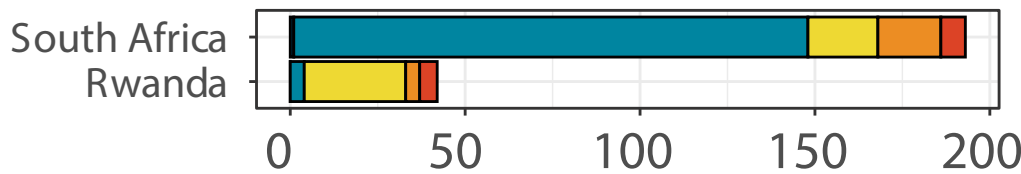
B.



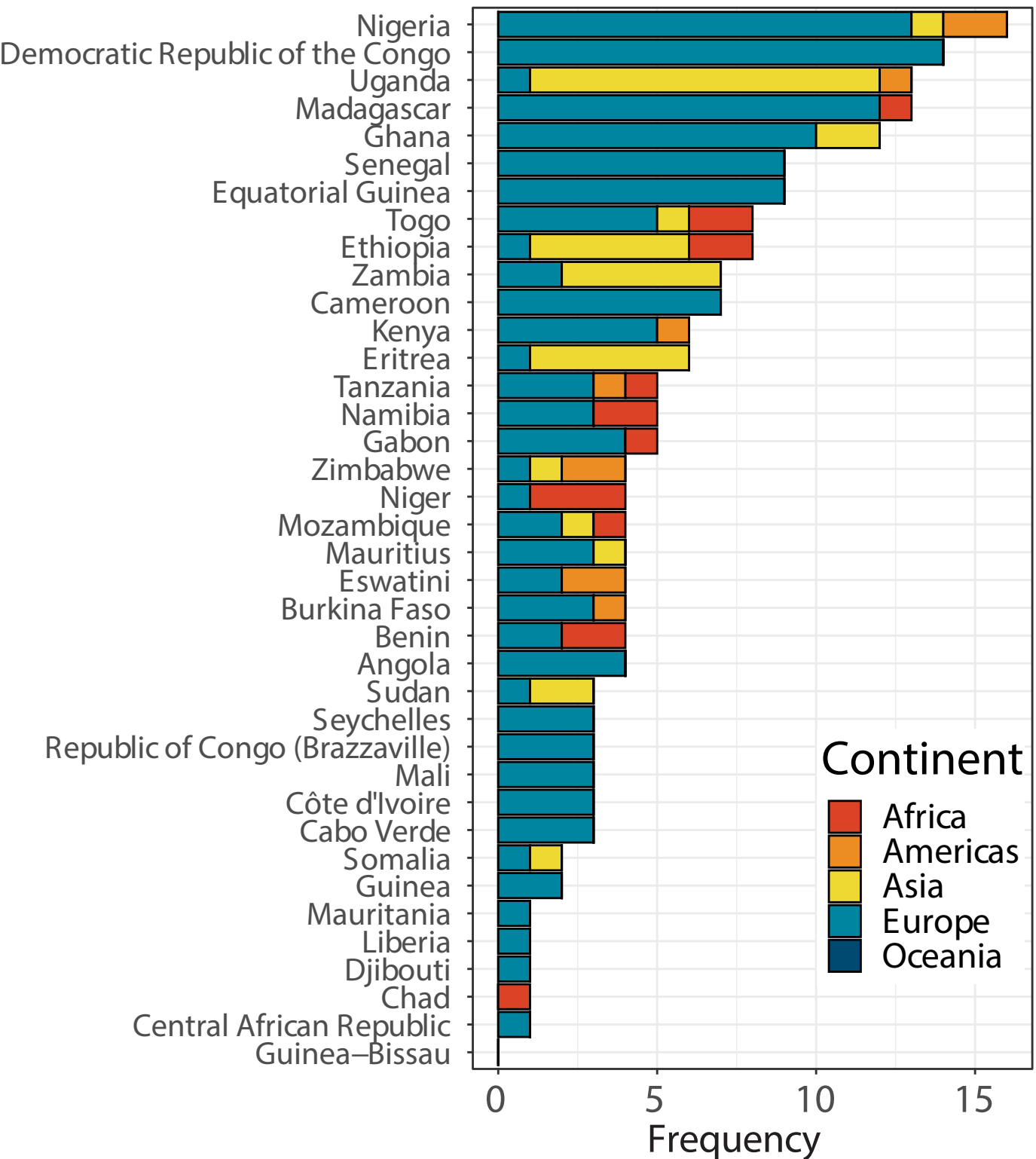
C.



## Countries with > 20 reports of travel



## Countries with < 20 reports of travel



Proportion of population >60y

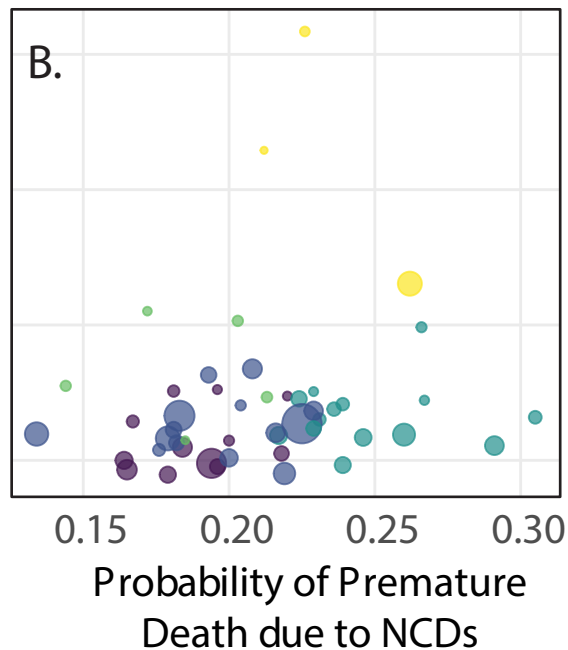
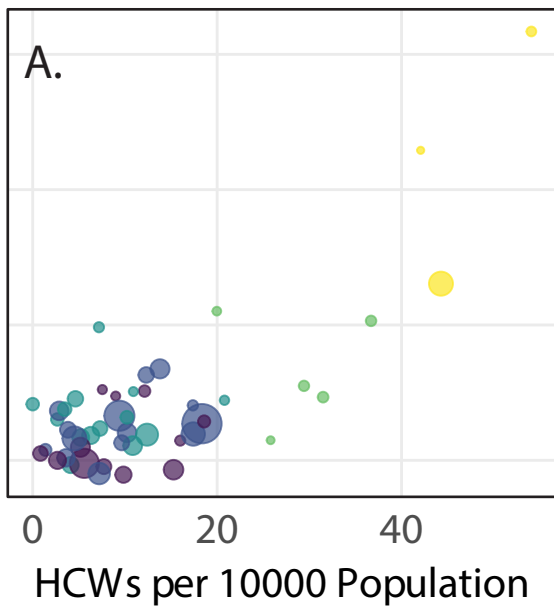


Table 1. Characteristics of confirmed case, by status (importation versus local transmission)

<b>Characteristic*</b>	<b>Imported</b> n=677	<b>Local Transmission</b> n=199	<b>Unknown</b> n=1541
Male	226** (67.3)	33 (44.6)	40 (66.7)
Median Age (Range)	43 years (6 weeks - 88 years)	34 years (10 months - 105 years)	37.5 years (2 - 74 years)
Mode of Detection			
Active Monitoring	216 (88.9)	65 (82.3)	12 (92.3)
Self-Presentation	27 (11.1)	14 (17.7)	1 (7.7)

\* Reported as frequency (%) unless otherwise indicated

\*\* Frequencies may not sum to totals per category due to missing information



Table 2. Results of clustering analysis around risk factors for COVID-19 severe morbidity and mortality and widespread transmission of respiratory illness

Cluster	Countries Reporting Cases	Countries Not Reporting Any Cases	Population	Prop. of Population Aged 60+	Prob. Premature Death	HCWs	Hospital Beds	GHSI
A	Angola, Benin, Democratic Republic of the Congo, Djibouti, Equatorial Guinea, Guinea-Bissau, Mauritania, Mozambique, Republic of Congo (Brazzaville), Somalia, Zambia	Malawi	18,274,511.83	0.046	0.19	9.20	1.13	25.33
B	Cameroon, Ethiopia, Ghana, Kenya, Liberia, Madagascar, Niger, Nigeria, Rwanda, Senegal, Tanzania, Uganda, Zimbabwe	Gambia	41,797,795.93	0.050	0.19	9.42	0.79	75.36
C	Burkina Faso, Central African Republic, Chad, Côte d'Ivoire, Eritrea, Eswatini, Guinea, Mali, Sudan, Togo	Burundi, Comoros, Lesotho, Sierra Leone	12,360,091.21	0.053	0.25	7.57	0.83	43.43
D	Cabo Verde, Gabon, Namibia	Botswana, Sao Tome and Principe	1,501,491.60	0.066	0.18	28.67	3.16	34.80
E	Mauritius, Seychelles, South Africa		18,403,097.67	0.130	0.23	46.81	3.27	79.67

Table 3. Outcomes by Cluster

Cluster	Prob. Any Case	Data Availability Score	Total Cases Reported per 100,000 Pop	Case Fatality
A	0.92	3.47	11.17	0.008
B	0.93	3.89	43.86	0.026
C	0.71	2.97	27.36	0.029
D	0.60	5.11	3.20	0.114
E	1.00	3.20	423.33	0.007