

1 **Title: Spatial variability in the risk of death from COVID-19**
2 **in 20 regions of Italy**

3 **Authors:** Kenji Mizumoto^{1,2,3*}, Sushma Dahal^{3*}, Gerardo Chowell³,

4 *Mizumoto and Dahal contributed equally

5

6 **Affiliations:**

7 ¹ Graduate School of Advanced Integrated Studies in Human Survivability, Kyoto University

8 Yoshida-Nakaadachi-cho, Sakyo-ku, Kyoto, Japan

9 ² Hakubi Center for Advanced Research, Kyoto University, Yoshidahonmachi, Sakyo-
10 ku, Kyoto, Japan;

11 ³ Department of Population Health Sciences, School of Public Health, Georgia State
12 University, Atlanta, Georgia, USA

13 **Correspondence to:**

14 G Chowell, Department of Population Health Sciences, School of Public Health, Georgia

15 State University, Atlanta, Georgia, USA

16 Tel: +1 404 413 9322 Fax: +1 404 413 2344

17 E-mail: gchowell@gsu.edu

18

19 **Article type:**

20 Original research

21 **Word count:**

22 Abstract: 193 (Max 200)

23 Main: 2543 (Max 2500)

24

25 **Number of references, tables and figures**

26 Number of references: 28

27 Number of tables and figures in main text: 1 table, 6 figures

28 Number of tables and figures in the supplement file: 2 tables and 2 figures

29

30

31

32 **Abstract**

33 **Objectives:** Italy has been disproportionately affected by the COVID-19 pandemic,
34 becoming the nation with the third highest death toll in the world as of May 10th, 2020. We
35 analyzed the severity of COVID-19 pandemic across 20 Italian regions.

36 **Method:** We manually retrieved the daily cumulative numbers of laboratory-confirmed cases
37 and deaths attributed to COVID-19 across 20 Italian regions. For each region, we estimated
38 the crude case fatality ratio and time-delay adjusted case fatality ratio (aCFR). We then
39 assessed the association between aCFR and sociodemographic, health care and transmission
40 factors using multivariate regression analysis.

41 **Results:** The overall aCFR in Italy was estimated at 17.4%. Lombardia exhibited the highest
42 aCFR (24.7%) followed by Marche (19.3%), Emilia Romagna (17.7%) and Liguria (17.6%).
43 Our aCFR estimate was greater than 10% for 12 regions. Our aCFR estimates were
44 statistically associated with population density and cumulative morbidity rate in a
45 multivariate analysis.

46 **Conclusion:** Our aCFR estimates for overall Italy and for 7 out of 20 regions exceeded those
47 reported for the most affected region in China. Our findings highlight the importance of
48 social distancing to suppress incidence and reduce the death risk by preventing saturating the
49 health care system.

50

51 **Keywords:** COVID-19, Italy, regions, time-delay adjusted CFR, 2020

52

53 **Introduction**

54 Since the first COVID-19 cases in Wuhan, China, the virus rapidly spread throughout China,
55 and subsequently spread across all continents of the world. As of May 10, 2020 a total of
56 3,917,366 confirmed COVID-19 cases including 274,361 deaths have been recorded globally
57 with 215 countries/territories/areas reporting variable disease growth rates.¹ Moreover, the
58 US has reported the highest number of cases (31.8%) and the highest death toll (27.5%).¹

59

60 The severity impact of any pandemic situation like COVID-19 largely depends on the
61 transmission rate of the disease, the capacity of the health care system, and the spectrum of
62 clinical severity which is tied to socio-demographic factors (age, gender) and the underlying
63 prevalence of comorbidities in the population.² A better understanding of the expected influx
64 of severe patients to the health care system during the coronavirus pandemic in different
65 areas of the world is key to anticipate medical resources such as ICU units and ventilators
66 which are critically needed to save the lives of severely ill patients.²⁻⁴

67

68 The case fatality ratio (CFR) is one of the most important epidemiological metrics to quantify
69 the clinical severity of emerging infectious diseases such as COVID-19.^{3, 5, 6} So far, several
70 studies have attempted to elucidate the CFR for different population segments and
71 geographic regions particularly based on epidemiological data from China.⁷⁻⁹ However, there
72 is still a scarcity of studies carefully estimating the severity of the COVID-19 pandemic in
73 populations outside China. Accumulating epidemiological data indicates that the CFR varies
74 by geographical location, intensity of transmission, characteristics of patients such as age,
75 sex, and comorbidity status.⁸ For example, the time-delay adjusted CFR (aCFR) for Wuhan
76 was estimated at 12.2% compared to 4.2% for Hubei province excluding Wuhan and 0.9% in
77 China excluding Hubei province.⁶ While rough differences in severity of the pandemic in

78 different countries have been highlighted,⁹ there is a need to quantify spatial variability in
79 CFR and investigate how this variability is influenced by population factors and the
80 characteristics of the health care system.

81

82 At the time of writing, Italy was exhibiting an alarming effect of the COVID-19 pandemic
83 with the third highest death toll after the US and the UK¹ but the estimates of the CFR that
84 carefully account for the delay from onset of symptoms to death are not yet available. In this
85 study we provide estimates of the COVID-19 CFR across 20 Italian regions by linking
86 statistical methods with publicly available daily series of confirmed cases and deaths. We
87 also investigated the association between aCFR and sociodemographic, health care and
88 transmission related factors using regression analysis.

89 **Methods**

90 Study setting

91 Italy is located in Southern Europe and there are 20 administrative regions in the country:
92 Lombardia, Emilia Romagna, Veneto, Piemonte, Marche, Toscana, Lazio, Campania,
93 Liguria, Friuli V.G., Sicilia, Puglia, Umbria, Molise, Trentino-Alto Adige, Abruzzo, Valle
94 d'Aosta, Sardegna, Calabria, Basilicata.¹⁰ For this study we have conducted a separate
95 analysis for Trento and Bolzano provinces within Trentino-Alto Adige region based on data
96 availability.

97

98 The first two confirmed cases of COVID-19 in Italy were reported on 31st January 2020 and
99 had a travel history to Wuhan, China. The third case was not confirmed until February 7 and
100 on February 22, the cumulative case count reached 9. Subsequently, the incidence trajectory

101 rapidly increased for about 8 weeks and then gradually started to decline¹¹ with daily reported
102 incidence below 2000 cases since 30 April 2020.¹²

103 Data sources

104 We manually retrieved the daily cumulative numbers of laboratory confirmed COVID-19
105 cases and deaths stratified for 21 Italian regions from the daily released report of the Ministry
106 of Health of Italy from March 2 to May 10, 2020.¹²

107 For each region, we retrieved major socio-demographic and healthcare variables to explore
108 their influence on the estimated COVID-19 aCFR across areas. We also incorporated the total
109 number of tests, the total number of tests per population size and two transmission-related
110 metrics: the cumulative morbidity (cumulative cases) and the cumulative morbidity rate
111 calculated as the cumulative cases divided by the local population size. These variables are
112 summarized in Table S2.

113 Statistical analysis

114 The crude CFR (cCFR) is defined as the number of cumulative deaths divided by the number
115 of cumulative cases at a specific point in time. For the estimation of CFR in real time, we
116 employed the delay from hospitalization to death, h_s , which is assumed to be given by $h_s =$
117 $H(s) - H(s-1)$ for $s > 0$ where $H(s)$ is a cumulative density function of the delay from
118 hospitalization to death and follows a gamma distribution with mean 10.1 days and SD 5.4
119 days, obtained from the previously published paper.⁶ Let π_{a,t_i} be the time-delay adjusted case
120 fatality ratio on reported day t_i in area a , the likelihood function of the estimate π_{a,t_i} is

$$L(\pi_{a,t_i}; c_{a,t}, D_{a,t_i}) = \prod_{t_i} \binom{\sum_{t=1}^{t_i} c_{a,t}}{D_{a,t_i}} \left(\pi_{a,t_i} \frac{\sum_{t=2}^{t_i} \sum_{s=1}^{t-1} c_{a,t-s} h_s}{\sum_{t=1}^{t_i} c_{a,t}} \right)^{D_{a,t_i}} \left(1 - \pi_{a,t_i} \frac{\sum_{t=2}^{t_i} \sum_{s=1}^{t-1} c_{a,t-s} h_s}{\sum_{t=1}^{t_i} c_{a,t}} \right)^{\sum_{t=1}^{t_i} c_{a,t} - D_{a,t_i}}$$

121 where $c_{a,t}$ represents the number of new cases with reported day t in area a , and D_{a,t_i} is the
 122 cumulative number of deaths until reported day t_i in area a .^{13, 14} Among the cumulative cases
 123 with reported day t in area a , D_{a,t_i} have died and the remainder have survived the infection.
 124 The contribution of those who have died with biased death risk is shown in the middle
 125 parenthetical term and the contribution of survivors is presented in the right parenthetical
 126 term. We assume that D_{a,t_i} is the result of the binomial sampling process with probability π_{a,t_i} .
 127 We estimated model parameters using a Monte Carlo Markov Chain (MCMC) method in a
 128 Bayesian framework. Posterior distributions of the model parameters were estimated by
 129 sampling from the three Markov chains. Convergence of MCMC chains were evaluated using
 130 the potential scale reduction statistic.^{15, 16} Estimates and 95% credibility intervals for these
 131 estimates are based on the posterior probability distribution of each parameter and based on
 132 the samples drawn from the posterior distributions.
 133 We employed multiple linear regression models to evaluate the association between regional
 134 level aCFR estimates attributable to COVID-19. A detailed description is provided in the
 135 supplement.
 136 All statistical analyses were conducted in R version 3.6.1 (R Foundation for Statistical
 137 Computing, Vienna, Austria).

138

139 **Results**

140 As of May 10, a total of 219,070 cases and 30,560 deaths due to COVID-19 have been
141 reported in Italy. Moreover, the Lombardia region has reported the highest number of cases
142 at 81,507 (32.7%) and deaths at 14,986 (49.0%) followed by Emilia Romagna with 26796
143 (12.2%) cases and 3845 (12.6%) deaths, and Piemonte with 28665 (13.1%) cases and 3367
144 (11.0%) deaths.

145

146 Figure 1 and 2 display the curves of cumulative cases and cumulative deaths in (A)
147 Lombardia, (B) Emilia Romagna, (C) Veneto, (D) Piemonte, (E) Marche, (F) Toscana, (G)
148 Lazio, (H) Campania, (I) Liguria, (J) Friuli V.G., (K) Sicilia, (L) Puglia, (M) Umbria, (N)
149 Molise, (O) Trento, (P) Abruzzo, (Q) Bolzano, (R) Valle d'Aosta, (S) Sardegna, (T) Calabria,
150 (U) Basilicata, and (V) National, over time, respectively. Cumulative cases and cumulative
151 deaths increased rapidly in the Lombardia, Emilia Romagna, and Piemonte regions.

152

153 Figure 3 and 4 illustrate observed and model based posterior estimates of the cCFR and aCFR
154 in different regions in Italy. Except for the initial days (first 5 days) our model based cCFR
155 fitted the observed data well. For the aCFR, our model based posterior estimates are higher
156 than the observed cCFR. Across most of the regions of Italy, the differences between cCFR
157 and aCFR are greater in the initial 3-4 weeks and then slowly declining difference in the later
158 stage of the epidemic. For the most affected Lombardia region, the aCFR was stable at
159 highest point (100%) during the first 7 days (considering March 1st as day 1) and rapidly
160 declined to 50% by day 15 and thereafter exhibited a gradual decline (about 25% by day 40).

161 We saw a similar trend for Emilia Romagna and for the national level. For other regions such
162 as Veneto, Marche the initial stable period was absent. For Toscana, Campania, Sicilia,
163 Umbria, Molise, and Basilicata, the cCFR and aCFR varied slightly during the initial phase of
164 epidemic. There was an overall downward trend of aCFR across all the regions of Italy.

165

166 A summary of the aCFR, range of median estimates and cCFR of COVID-19 across 20
167 regions of Italy are presented in Table 1. Lombardia had the highest aCFR of 24.7% (95%
168 credible interval: 24.4, 25.1] followed by Marche (19.3%) [95% CrI: 18.2, 20.5], Emilia
169 Romagna (17.7%) [95% CrI: 17.2, 18.3] and the Liguria (17.6%) [95% CrI: 16.8, 18.6]
170 (Table 1, figure 3). The Umbria region exhibited the lowest aCFR (5.2%) [95% CrI: 4.0, 6.4]
171 (Table 1).

172

173 Regions with higher population density and those with a higher cumulative morbidity rate
174 tended to exhibit higher aCFR estimates. These two predictors explained 58% variability
175 (Adjusted $R^2=0.58$) in the severity of pandemic across the Italian regions ($P<0.05$) (Table
176 S1). Figure 7 displays the geographic distribution of the aCFR, population density per square
177 km, and the cumulative morbidity rate across 20 Italian regions. The scatter plots and the
178 correlation coefficients between aCFR and the variables included in the regression analysis
179 are shown in Figure S1. Figure S2 displays the scatter plot of cumulative cases per total tests
180 and cumulative morbidity rate for different regions of Italy. Because cumulative morbidity
181 per total number of tests was statistically associated with cumulative morbidity rate, it was
182 excluded due to multicollinearity ($p \text{ value}<0.00$, $r = 0.85$) (Figure S2).

183

184 **Discussion**

185 In this paper, we have estimated the time delay adjusted case fatality ratio of COVID-19 for
186 20 regions of Italy. Our latest estimate of aCFR in Italy varied substantially across regions
187 with the highest value in the Lombardia region (24.7%) in the Northwest and the lowest in
188 the Umbria region (5.2%) in the Central Italy. The aCFR estimate for the national level was
189 17.4%. A total of 12 administrative regions had aCFR estimates greater than 10%. Our results

190 emphasize the need to generate real-time regional severity estimates to focus mitigation
191 efforts and allocate medical resources that help ameliorate the burden on strained or
192 overwhelmed health care infrastructures.

193

194 We found that the regions in Northern Italy were the most affected compared to regions in
195 Southern Italy including Islands. The aCFR estimates across 7 administrative regions:
196 Lombardia, Emilia Romagna, Piemonte, Marche, Liguria, Abruzzo, and Valle d'Aosta were
197 higher than the aCFR estimates for Wuhan (12.2%) (6) and Korea (1.4%).¹⁷

198

199 Results of the multivariate analysis indicate that population density and cumulative morbidity
200 rate are statistically associated with aCFR in Italy, which underscore the importance of social
201 distancing and the need to suppress the incidence curve in order to avoid saturating the health
202 care system and reduce the death risk. We found a statistically significant association of
203 cumulative morbidity per total number of tests and cumulative morbidity rate. This is likely
204 attributable to the different testing strategies implemented during the early transmission phase
205 and in the later phase of epidemic.¹⁸

206

207 When we compare the aCFR of the most affected regions in Italy and China, the estimate for
208 Italy is about twice the estimate for China (24.7% vs 12.2%).⁶ This difference may be partly
209 explained by the demographic structure of the two countries as suggested in a previous
210 study,¹⁸ namely Italy has an older population compared to China. In 2019, approximately
211 23% of the Italian population was 65 years and older¹⁸ compared to 12.6% in China.¹⁹ Other
212 factors behind the differences in the CFR estimates could be associated with the timing and
213 intensity of public health and social measures such as 'lockdown' measures. In Wuhan, China
214 aggressive lockdown measures were put in place for about 3 weeks after the report of first

215 COVID-19 case.²⁰ In Italy, Northern provinces were put under lockdowns only 5 weeks after
216 the first recorded cases. Yet, the extent and guidelines of the lockdown were not clearly
217 defined.²¹ Similarly, different testing strategies may have also influenced differences in CFR.
218 Likewise, in the early phase of epidemic, there was an extensive testing strategy in Italy that
219 included both symptomatic cases and their asymptomatic contacts but later more strict testing
220 policies prioritized more severe suspected cases requiring hospitalization.¹⁸

221

222 In our study, as the epidemic progressed, we saw a downward trend in the aCFR for most of
223 the regions in Italy. For Lombardia, Emilia Romagna and for national level, there was also an
224 initial phase with steady high-level CFR which was relatively longer for Lombardia region
225 compared to Emilia Romagna. A previous study on COVID-19 using data from China has
226 also found the declining trend of aCFR for Hubei province excluding Wuhan.⁶ This trend was
227 also reported for the 2015 MERS outbreak in South Korea in which the risk of death was
228 significantly associated with older age and underlying health condition.²² In the early phase
229 of the outbreak of an emerging infectious disease like MERS and COVID-19, the detection
230 rate of mildly symptomatic cases is low and only patients who have serious conditions are
231 confirmed due to hospitalization as happened in Wuhan^{23, 6} and South Korea.²² However the
232 downward trend of CFR in the later phase of epidemic suggests both an improvement in
233 epidemiologic surveillance and a decline in the proportion of vulnerable patients.⁶ Because of
234 the decline in the proportion of vulnerable patients and an increased detection of mildly
235 symptomatic cases, the epidemic might be prolonged unless strict social/physical distancing
236 measures are applied.⁶

237 Our findings underscore the utility of real-time severity estimates to guide the urgent
238 allocation medical resources in highly affected regions and the appropriate planning and
239 supplies procurement in the other regions of Italy with a focus on medical care delivery to the

240 most vulnerable populations with the highest risk of poorer disease outcomes due to COVID-
241 19 such as patients categorized as critical, the elderly, and those with multiple comorbidities
242 including cardiovascular disease, hypertension, and diabetes.⁸ Similarly, social distancing
243 measures are critical to prevent the health care system from overloading to a breaking point.
244 After a lockdown that lasted for about two months throughout the country, Italy started to
245 ease movement restrictions on May 4, 2020. However, this should be conducted cautiously
246 by putting in place the necessary infrastructure for tracing, testing, isolation and treatment in
247 place to reduce the likelihood that the disease resurges.²⁴

248

249 Our study is not exempted from limitations. The preferential ascertainment of severe cases
250 bias in COVID-19 may have spuriously increased our estimate of CFR,²⁵ which is a frequent
251 caveat in this type of studies.^{26, 27} Similarly, for a disease like COVID-19 where transmission
252 is characterized by a rapid growth phase in case incidence, but the infection-death time is
253 long (ranges from 2 to 8 weeks),⁸ our CFR estimate could have been affected by delayed
254 reporting bias.^{25, 28} Similarly, our data on number of cases reflects the date of reporting and
255 not the date of onset of illness.

256

257 **Conclusion**

258 The risk of death due to COVID-19 in Italy was estimated at 17.4% with varying rates across
259 20 regions. Our estimates of time delay adjusted CFR was as high as 24.7% in Lombardia, in
260 Northwest Italy and as low as 5.2% in the Umbria region, located in Central Italy.
261 Importantly, 12 out of the 20 regions exhibited aCFR values greater than 10% and the
262 estimates for 7 regions exceeded previous estimates for the most affected regions in China
263 and Korea. Our findings underscore the importance of social distancing to mitigate the

264 incidence curve to reduce the risk of death from COVID-19, which we found to be
265 significantly associated with the cumulative morbidity rates and population density.

266

267 **Acknowledgments**

268 KM acknowledges support from the Japan Society for the Promotion of Science (JSPS)
269 KAKENHI (Grant Number 18K17368 and 20H03940) and from the Leading Initiative for
270 Excellent Young Researchers from the Ministry of Education, Culture, Sport, Science &
271 Technology of Japan. GC acknowledges support from NSF grant 1414374 as part of the joint
272 NSF-NIH-USDA Ecology and Evolution of Infectious Diseases program.

273

274 **Conflict of interest**

275 The authors declare no conflicts of interest.

276 **Additional files**

277 **Additional file 1:**

278 **Appendix. Table S1.** Multivariate models of time-adjusted case fatality ratio as a function of
279 major socio-demographic, and healthcare variables for 21 regions in Italy. **Table S2.** The
280 range of major socio-demographic, and healthcare variables for 21 regions in Italy used in
281 our analyses (linear regression). **Figure S1.** Scatter plots of time-delay adjusted CFR and
282 other variables with correlation coefficients. **Figure S2.** Scatter plot of cumulative morbidity
283 rate and cumulative cases per total tests with correlation coefficients.

284

285 **References**

286 1. WHO. Coronavirus disease 2019 (COVID-19): Situation report 111. 10 May 2020.

- 287 2. Lipsitch M, Swerdlow DL, Finelli L. Defining the epidemiology of Covid-19—studies
288 needed. *N Engl J Med*. **2020**.
- 289 3. Reich NG, Lessler J, Cummings DA, Brookmeyer R. Estimating absolute and relative
290 case fatality ratios from infectious disease surveillance data. *Biometrics*. **2012**;68(2):598-
291 606.
- 292 4. Wu JT, Leung K, Bushman M, Kishore N, Niehus R, de Salazar PM, et al. Estimating
293 clinical severity of COVID-19 from the transmission dynamics in Wuhan, China. *Nature*
294 *Med*. **2020**. doi: 10.1038/s41591-020-0822-7.
- 295 5. Ghani A, Donnelly C, Cox D, Griffin J, Fraser C, Lam T, et al. Methods for estimating
296 the case fatality ratio for a novel, emerging infectious disease. *Am. J. Epidemiol*.
297 **2005**;162(5):479-86.
- 298 6. Mizumoto K, Chowell G. Estimating Risk for Death from 2019 Novel Coronavirus
299 Disease, China, January-February 2020. *EID*. **2020**;26(6).
- 300 7. Novel CPERE. The epidemiological characteristics of an outbreak of 2019 novel
301 coronavirus diseases (COVID-19) in China. *Zhonghua liu xing bing xue za zhi=*
302 *Zhonghua liuxingbingxue zazhi*. **2020**;41(2):145.
- 303 8. WHO. Report of the WHO-China Joint Mission on Coronavirus Disease 2019 (COVID-
304 19). February; **2020**.
- 305 9. Rodriguez-Morales AJ, Cardona-Ospina JA, Gutiérrez-Ocampo E, Villamizar-Peña R,
306 Holguin-Rivera Y, Escalera-Antezana JP, et al. Clinical, laboratory and imaging features
307 of COVID-19: A systematic review and meta-analysis. *Travel Med. Infect. Dis*.
308 **2020**:101623.
- 309 10. The world fact book: Europe- Italy 2020 [03/25/2020]. Available from:
310 https://www.cia.gov/library/publications/the-world-factbook/geos/print_it.html
- 311 11. WHO. Coronavirus disease 2019 (COVID-19): Situation reports 11-111. **2020**.

- 312 12. Ministry of Health Italy. New Coronavirus Italy: Ministry of Health; 2020. Available
313 from:
314 <http://www.salute.gov.it/portale/nuovocoronavirus/archivioNotizieNuovoCoronavirus.jsp>
- 315 13. Nishiura H, Klinkenberg D, Roberts M, Heesterbeek JA. Early epidemiological
316 assessment of the virulence of emerging infectious diseases: a case study of an influenza
317 pandemic. *PLoS One*. **2009**;4(8).
- 318 14. Tsuzuki S, Lee H, Miura F, Chan YH, Jung S-m, Akhmetzhanov AR, et al. Dynamics of
319 the pneumonic plague epidemic in Madagascar, August to October 2017. *Euro Surveill*.
320 **2017**;22(46).
- 321 15. Gamerman D, Lopes HF. Markov chain Monte Carlo: stochastic simulation for Bayesian
322 inference: CRC Press; **2006**.
- 323 16. Gelman A, Rubin DB. Inference from iterative simulation using multiple sequences. *Stat*
324 *Sci*. **1992**;7(4):457-72.
- 325 17. Shim Eunha, Mizumoto Kenji, Choi Wongyeong, Chowell Gerardo. Estimating the risk
326 of COVID-19 death during the course of the outbreak in Korea, February- March, 2020.
327 **2020**.
- 328 18. Onder G, Rezza G, Brusaferro S. Case-Fatality Rate and Characteristics of Patients Dying
329 in Relation to COVID-19 in Italy. *JAMA*. **2020**.
- 330 19. statistica. Population of China in 2019, by broad age group 2019. Available from:
331 <https://www.statista.com/statistics/251524/population-distribution-by-age-group-in-china/>
- 332 20. Taylor DB. How the Coronavirus Pandemic Unfolded: a Timeline. *The New York Times*.
333 May 12, 2020. Available from: [https://www.nytimes.com/article/coronavirus-](https://www.nytimes.com/article/coronavirus-timeline.html)
334 [timeline.html](https://www.nytimes.com/article/coronavirus-timeline.html)
- 335 21. McCann A, Popovich N, Wu J. Italy's Virus Shutdown Came Too Late. What Happens
336 Now? *The New York Times*. April 5, 2020. Available from:

- 337 <https://www.nytimes.com/interactive/2020/04/05/world/europe/italy-coronavirus->
338 [lockdown-reopen.html](https://www.nytimes.com/interactive/2020/04/05/world/europe/italy-coronavirus-lockdown-reopen.html)
- 339 22. Mizumoto K, Endo A, Chowell G, Miyamatsu Y, Saitoh M, Nishiura H. Real-time
340 characterization of risks of death associated with the Middle East respiratory syndrome
341 (MERS) in the Republic of Korea, **2015**. *BMC med.* 2015;13(1):228.
- 342 23. Yang S, Cao P, Du P, Wu Z, Zhuang Z, Yang L, et al. Early estimation of the case fatality
343 rate of COVID-19 in mainland China: a data-driven analysis. *Ann Transl Med.* **2020**;8(4).
- 344 24. Feuer W, Kim J. WHO warns that coronavirus cases have jumped in countries that eased
345 lockdowns. CNBC. May 11, 2020. Available from:
346 [https://www.cnbc.com/2020/05/11/who-warns-that-coronavirus-cases-have-jumped-in-](https://www.cnbc.com/2020/05/11/who-warns-that-coronavirus-cases-have-jumped-in-countries-that-eased-lockdowns.html)
347 [countries-that-eased-lockdowns.html](https://www.cnbc.com/2020/05/11/who-warns-that-coronavirus-cases-have-jumped-in-countries-that-eased-lockdowns.html)
- 348 25. Lipsitch M, Donnelly CA, Fraser C, Blake IM, Cori A, Dorigatti I, et al. Potential biases
349 in estimating absolute and relative case-fatality risks during outbreaks. *PLoS Neglect*
350 *Trop D.* **2015**;9(7).
- 351 26. Yu H, Cowling BJ, Feng L, Lau EH, Liao Q, Tsang TK, et al. Human infection with
352 avian influenza A H7N9 virus: an assessment of clinical severity. *Lancet.*
353 **2013**;382(9887):138-45.
- 354 27. Cauchemez S, Fraser C, Van Kerkhove MD, Donnelly CA, Riley S, Rambaut A, et al.
355 Middle East respiratory syndrome coronavirus: quantification of the extent of the
356 epidemic, surveillance biases, and transmissibility. *Lancet Infect Dis.* **2014**;14(1):50-6.
- 357 28. Kucharski AJ, Edmunds WJ. Case fatality rate for Ebola virus disease in west Africa.
358 *Lancet.* **2014**;384(9950):1260.
- 359
360

361 **Table 1. Summary results of time-delay adjusted case fatality ratio of COVID-19 by**
 362 **region in Italy, 2020 (As of May 10, 2020)**

Area	Latest estimate	Range of median estimates during the study period	Crude CFR
Lombardia	24.7% (95%CrI [§] : 24.4-25.1%)	21.4-99.5%	18.4% (95%CI [¶] : 18.1-18.7%) 14986/81507
Emilia Romagna	17.7% (95%CrI: 17.2-18.3%)	16.1-97.7%	14.3% (95%CI: 13.9-14.8%) 3845/26796
Veneto	10.8% (95%CrI: 10.3-11.3%)	8.6-93.4%	8.9% (95%CI: 8.4-9.3%) 1657/18722
Piemonte	13.6% (95%CrI: 13.2-14.0%)	13.6-84.3%	11.7% (95%CI: 11.4-12.1%) 3367/28665
Marche	19.3% (95%CrI: 18.2-20.5%)	16.0-86.6%	14.7% (95%CI: 13.8-15.6%) 960/6533
Toscana	10.4% (95%CrI: 9.7-11.0%)	5.8-5.15%	9.6% (95%CI: 9.1-10.2%) 942/9774
Lazio	9.1% (95%CrI: 8.3-9.8%)	7.3-64.1%	7.8% (95%CI: 7.2-8.4%) 557/7165
Campania	9.0% (95%CrI: 8.1-9.9%)	7.5-50.6%	8.5% (95%CI: 7.7-8.7%) 391/4588
Liguria	17.6% (95%CrI: 16.8-18.6%)	17.3-89.9%	14.6% (95%CI: 13.8-15.3%) 1281/8788
Friuli V.G.	11.2% (95%CrI: 10.0-12.4%)	10.1-63.2%	9.9% (95%CI: 8.9-11.0%) 310/3130
Sicilia	8.6% (95%CrI: 7.6-9.6%)	5.0-51.2%	7.7% (95%CI: 6.8-8.7%) 256/3327
Puglia	11.8% (95%CrI: 10.9-12.8%)	11.6-79.8%	10.4% (95%CI: 9.5-11.3%) 448/4313
Umbria	5.2% (95%CrI: 4.0-6.4%)	4.6-51.6%	5.0% (95%CI: 4.0-6.3%) 71/1411
Molise	8.2% (95%CrI: 5.2-11.8%)	7.5-51.2%	5.9% (95%CI: 3.8-8.9%) 22/370
Trento	11.7% (95%CrI: 10.7-12.8%)	10.0-52.2%	10.3% (95%CI: 9.4-11.2%) 441/4295
Abruzzo	12.3% (95%CrI: 11.1-13.5%)	12.3-59.3%	11.6% (95%CI: 10.5-12.7%) 359/3103
Bolzano	11.8% (95%CrI: 10.6-13.1%)	11.8-53.3%	11.3% (95%CI: 10.1-12.6%) 290/2569
Valle d'Aosta	13.7% (95%CrI: 11.7-15.8%)	12.9-54.2%	12.0% (95%CI: 10.2-14.0%) 139/1157
Sardegna	9.7% (95%CrI: 8.1-11.5%)	7.0-51.5%	9.0% (95%CI: 7.5-10.6%) 120/1340
Calabria	8.4% (95%CrI: 6.8-10.2%)	8.2-51.7%	8.0% (95%CI: 6.5-9.8%) 91/1132
Basilicata	8.1% (95%CrI: 5.3-11.5%)	5.3-53.2%	7.0% (95%CI: 4.7-10.0%) 27/385
Italy (National)	17.4% (95%CrI: 17.2-17.6%)	15.9-99.6%	13.9% (95%CI: 13.8-14.1%) 30560/219070

363
 364 [§]CrI: 95% credibility intervals (CrI), [¶]95%CI: 95% confidence interval
 365
 366

367 Figure legend

368 **Figure 1: Temporal distribution of cases by region due to COVID-19, Italy, March-May**

369 **2020.**

370 Cumulative cases in (A) Lombardia, (B) Emilia Romagna, (C) Veneto, (D) Piemonte, (E)

371 Marche, (F) Toscana, (G) Lazio, (H) Campania, (I) Liguria, (J) Friuli V.G., (K) Sicilia, (L)

372 Puglia, (M) Umbria, (N) Molise, (O) Trento, (P) Abruzzo, (Q) Bolzano, (R) Valle d'Aosta,

373 (S) Sardegna, (T) Calabria, (U) Basilicata, and (V) National over time. Day 1 corresponds to

374 March 1st in 2020. As the dates of illness onset were not available, we used dates of reporting.

375

376 **Figure 2: Temporal distribution of deaths by region due to COVID-19, Italy, March-**

377 **May 2020.**

378 Cumulative death in (A) Lombardia, (B) Emilia Romagna, (C) Veneto, (D) Piemonte, (E)

379 Marche, (F) Toscana, (G) Lazio, (H) Campania, (I) Liguria, (J) Friuli V.G., (K) Sicilia, (L)

380 Puglia, (M) Umbria, (N) Molise, (O) Trento, (P) Abruzzo, (Q) Bolzano, (R) Valle d'Aosta,

381 (S) Sardegna, (T) Calabria, (U) Basilicata, and (V) National over time. Day 1 corresponds to

382 March 1st in 2020.

383

384 **Figure 3: Temporal variation of risk of death caused by COVID-19 by region, Italy,**

385 **March-May 2020: crude case fatality ratio (cCFR)**

386 Observed and posterior estimated of crude case fatality ratio in (A) Lombardia, (B) Emilia

387 Romagna, (C) Veneto, (D) Piemonte, (E) Marche, (F) Toscana, (G) Lazio, (H) Campania, (I)

388 Liguria, (J) Friuli V.G., (K) Sicilia, (L) Puglia, (M) Umbria, (N) Molise, (O) Trento, (P)

389 Abruzzo, (Q) Bolzano, (R) Valle d'Aosta, (S) Sardegna, (T) Calabria, (U) Basilicata, and (V)

390 National. Day 1 corresponds to March 1st in 2020. Black dots show crude case fatality ratio,

391 and light and dark indicates 95% and 50% credible intervals for posterior estimates,

392 respectively.

393

394

395 **Figure 4: Temporal variation of risk of death caused by COVID-19 by region, Italy,**

396 **March-May 2020: time-delay adjusted case fatality ratio (aCFR)**

397 Observed and posterior estimated of time-delay adjusted case fatality ratio in (A) Lombardia,

398 (B) Emilia Romagna, (C) Veneto, (D) Piemonte, (E) Marche, (F) Toscana, (G) Lazio, (H)

399 Campania, (I) Liguria, (J) Friuli V.G., (K) Sicilia, (L) Puglia, (M) Umbria, (N) Molise, (O)

400 Trento, (P) Abruzzo, (Q) Bolzano, (R) Valle d'Aosta, (S) Sardegna, (T) Calabria, (U)

401 Basilicata, and (V) National. Day 1 corresponds to March 1st in 2020. Black dots show crude

402 case fatality ratio, and light and dark indicates 95% and 50% credible intervals for posterior

403 estimates, respectively.

404

405 **Figure 5. Latest estimates of time-delay adjusted risk of death caused by COVID-19 by**

406 **region, 2020, Italy.**

407 Distribution of time-delay adjusted case fatality risks derived from the latest estimates (May

408 10, 2020) are presented. Top to bottom: Lombardia, Emilia Romagna, Veneto, Piemonte,

409 Marche, Toscana, Lazio, Campania, Liguria, Friuli V.G., Sicilia, Puglia, Umbria, Molise,

410 Trento, Abruzzo, Bolzano, Valle d'Aosta, Sardegna, Calabria, Basilicata and National

411

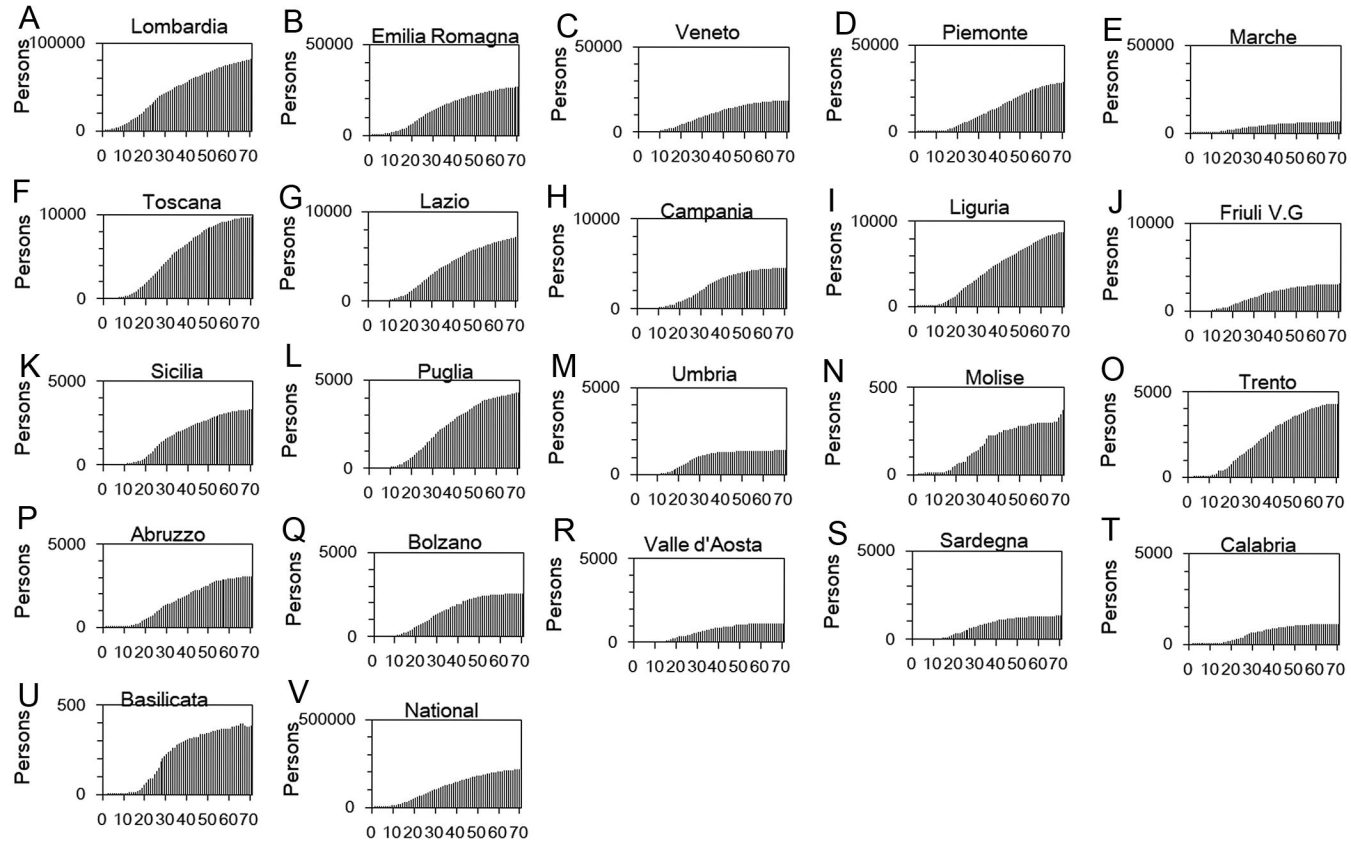
412 **Figure 6. Geographical variability of COVID-19 time-delay adjusted CFR, population**

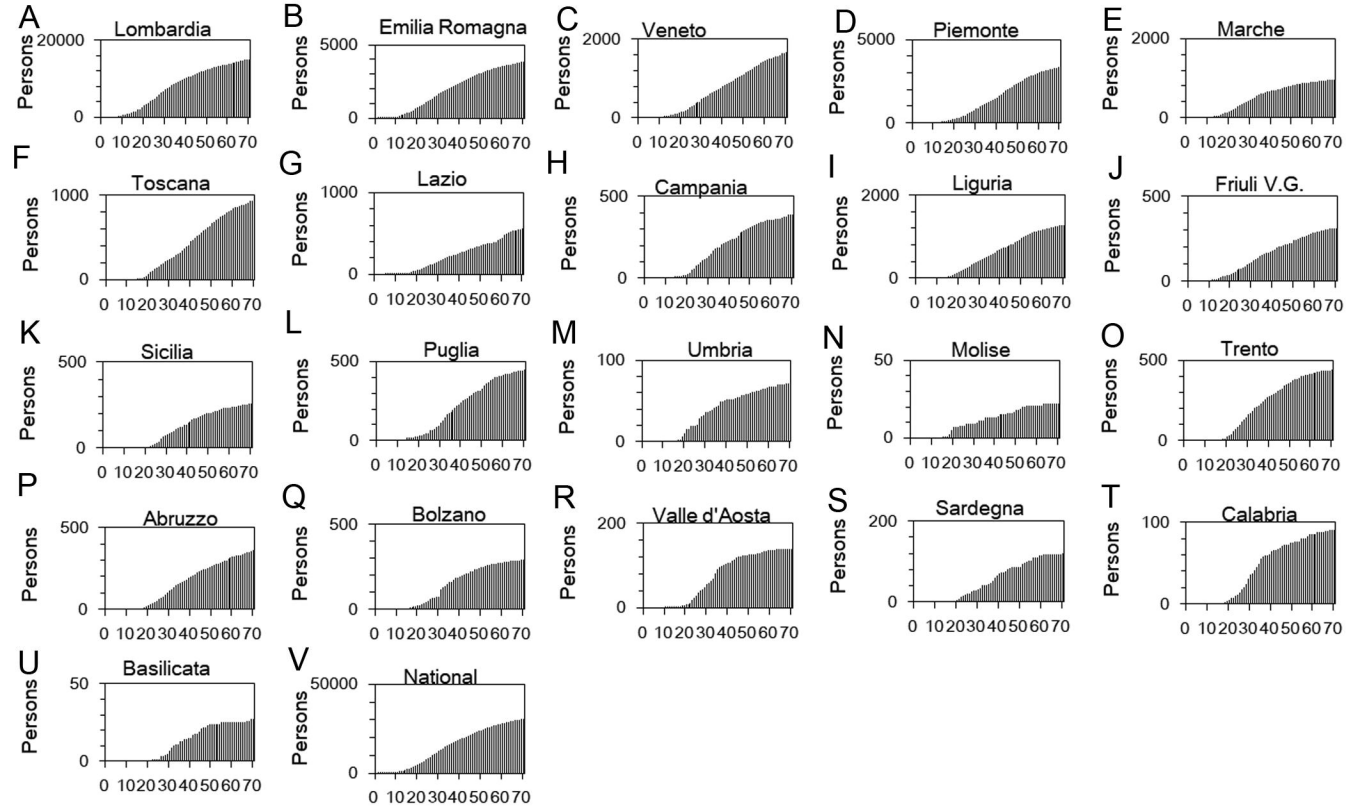
413 **density, and cumulative morbidity rate across 20 regions in Italy**

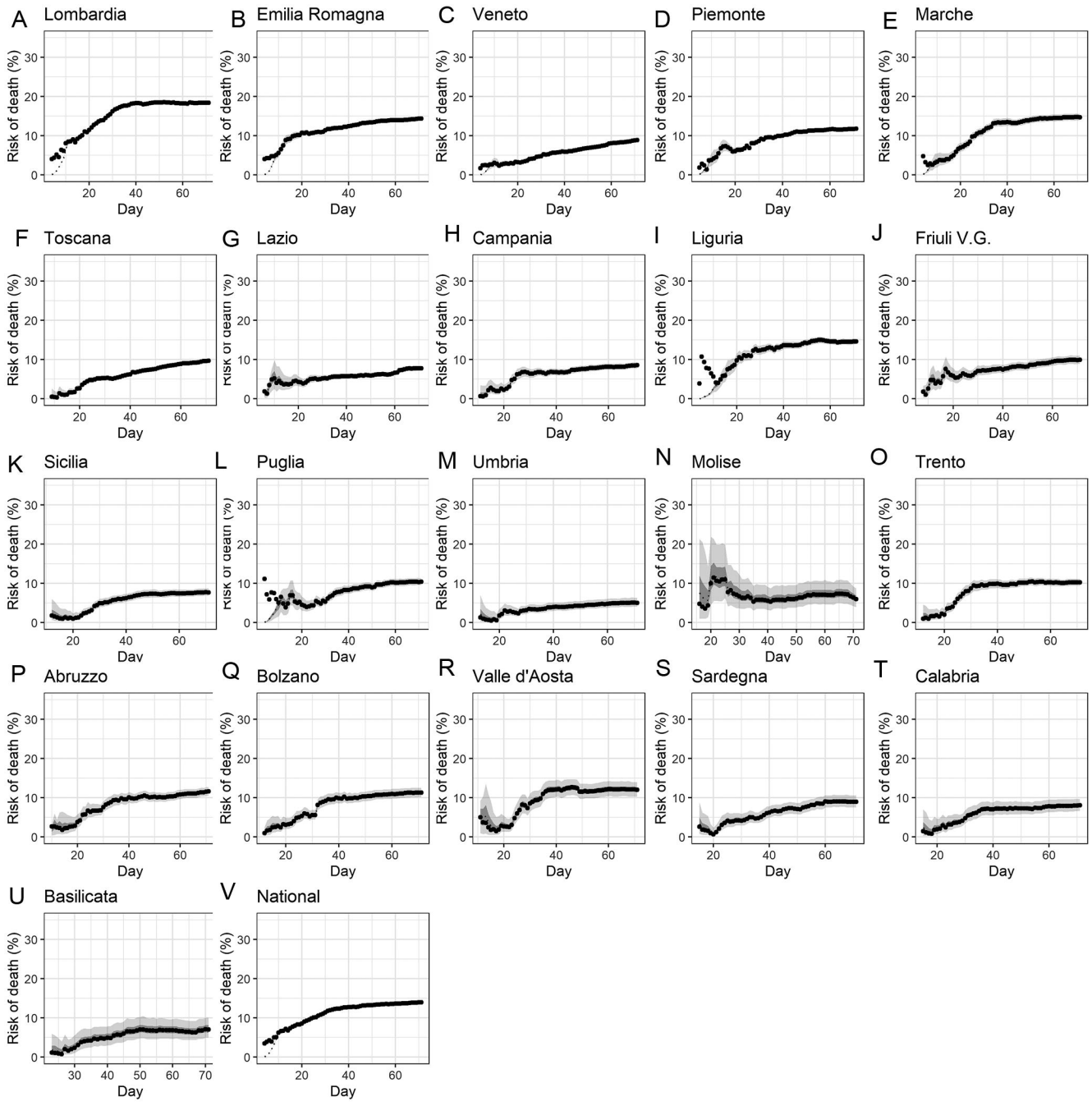
414 Distribution of time-delay adjusted case fatality risks derived from the latest estimates (May

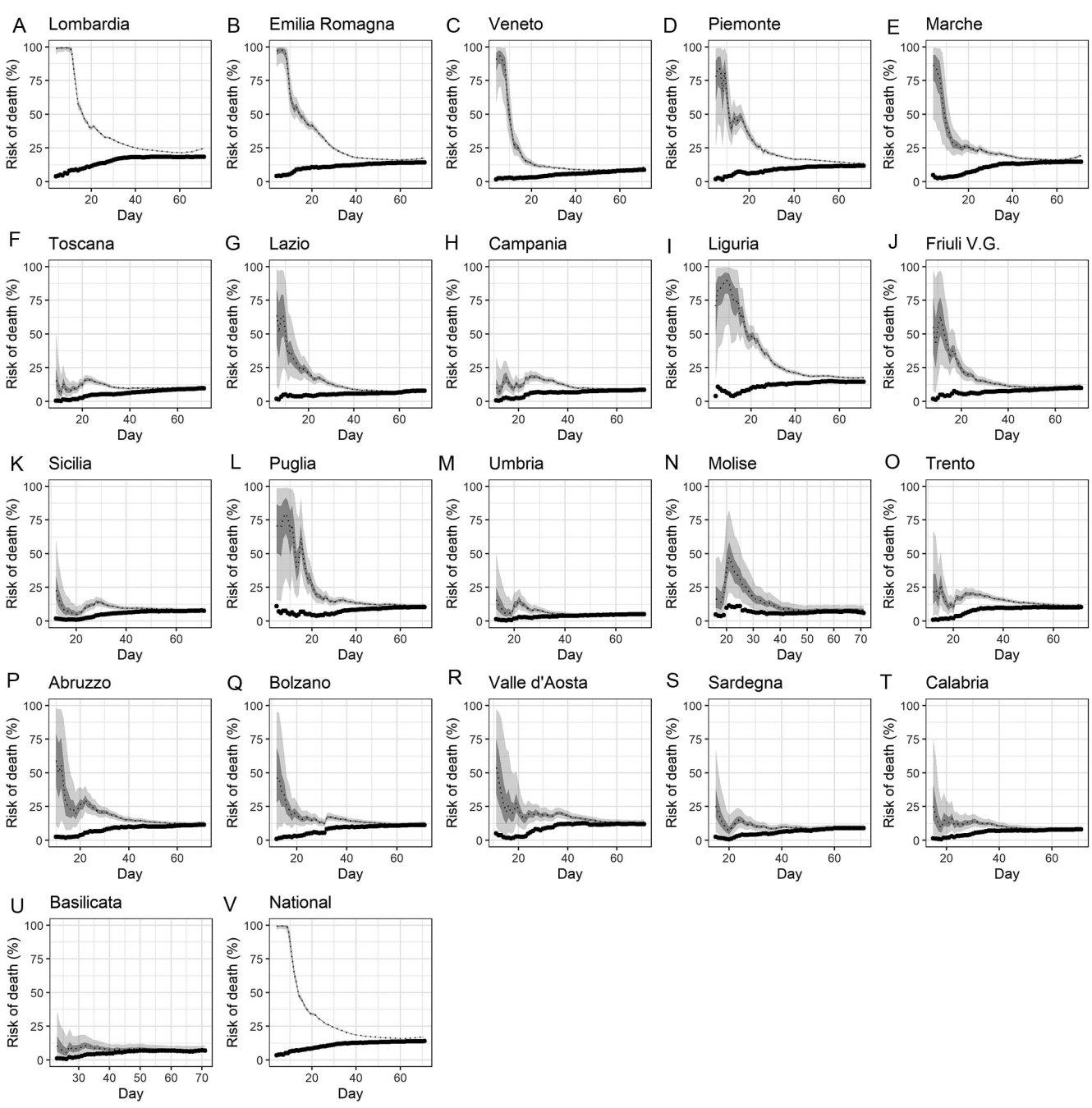
415 10, 2020) are presented. Top to b (A) time –delay adjusted case fatality rate (B)Population

416 density per square km (2019) (C) Cumulative morbidity rate in percent

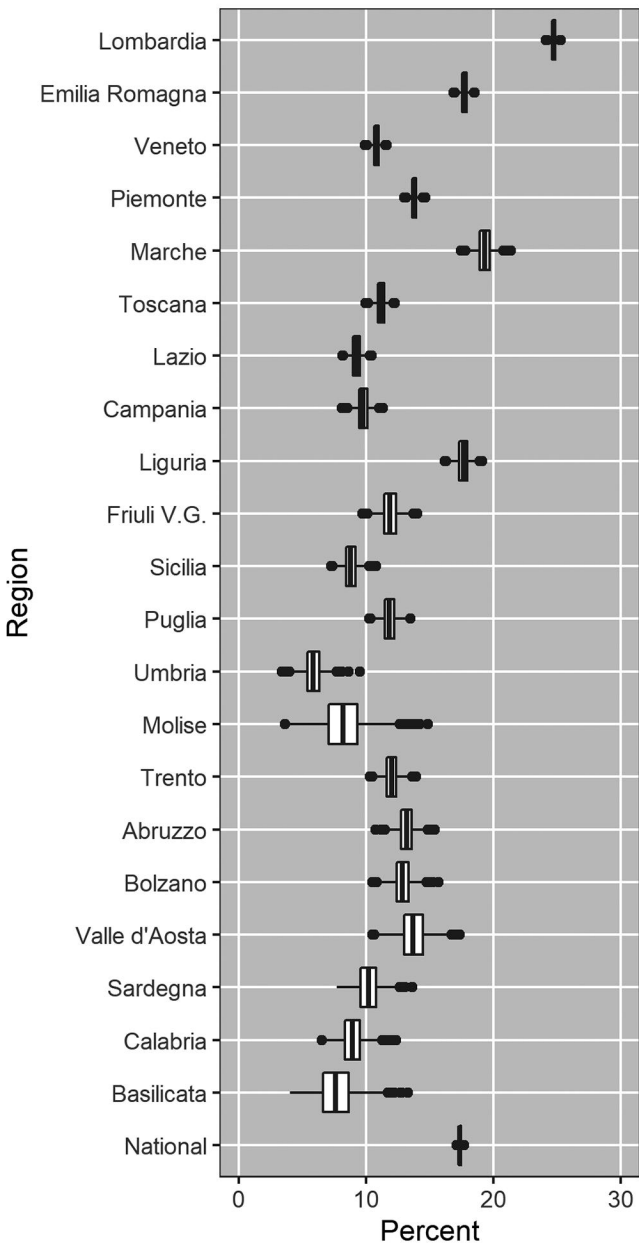


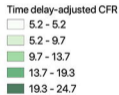
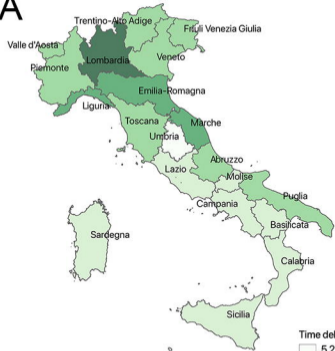
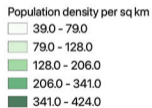
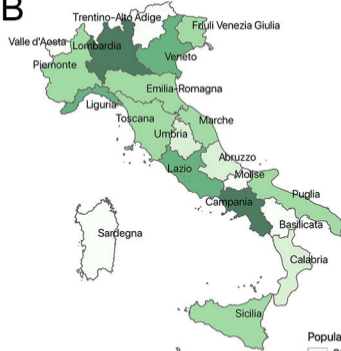






Time delay adjusted CFR by region
The latest estimate



A**B****C**