

Paternal body mass index and offspring DNA methylation: findings from the PACE consortium

Authors (affiliations at the end of this document):

Gemma C Sharp¹
Rossella Alfano^{2,3}
Akram Ghantous⁴
Jose Urquiza^{5,6}
Sheryl L Rifas-Shiman⁷
Christian M Page^{8,9}
Jianping Jin¹⁰
Silvia Fernández-Barrés^{5,6,11}
Gillian Santorelli¹²
Gwen Tindula¹³
Paul Yousefi¹
Leanne Kupers¹

Carlos Ruiz-Arenas^{5,6,11}
Vincent WV Jaddoe^{14,15}
Dawn DeMeo^{16,17}
Serena Fossati^{5,6,11}
John Wright¹²
Karen Huen¹⁸
Maja Popovic¹⁹
Ellen A Nohr^{20,21}
George Davey Smith¹
Johanna Lepeule²²
Andrea Baccarelli²³
Maria C Magnus⁸

Wenche Nystad²⁴
Maribel Casas^{5,6,11}
Emily Oken⁷
Siri E Håberg⁸
Marina Vafeiadi²⁵
Theano Roumeliotaki²⁵
Martine Vrijheid^{5,10,11}
Monica C Munthe-Kaas^{26,27}
Brenda Eskenazi²⁸
Luca Ronfani²⁹
Nina Holland¹³
Leda Chatzi³⁰

Helle Margrete Meltzer²⁷
Zdenko Herceg⁴
Michelle Plusquin^{2,3}
Mariona Bustamante^{5,6,11}
Marie-France Hivert^{6,7}
Deborah A Lawlor^{1,32}
Thorkild IA Sørensen^{33,34,1}
Stephanie J London³⁵
Janine F Felix^{14,15}
Caroline L Relton^{1,3}

Author Summary

Previous small, mostly candidate gene studies have shown associations between paternal pre-pregnancy BMI and offspring blood DNA methylation. However, in our large meta-analysis of co-ordinated EWAS results from a total of 19 datasets across two timepoints, we found little evidence to support these findings, even at imprinted regions. This does not rule out the possibility of a paternal epigenetic effect in different tissues, at regions not covered by the 450k array, via different mechanisms, or in populations with greater extremes of paternal BMI. More research is warranted to help understand the size and nature of contributions of paternal adiposity to offspring epigenetics and health outcomes.

Abstract

Background: Accumulating evidence links paternal adiposity in the peri-conceptual period to offspring health outcomes. DNA methylation has been proposed as a mediating mechanism, but very few studies have explored this possibility in humans.

Methods and findings: In the Pregnancy And Childhood Epigenetics (PACE) consortium, we conducted a meta-analysis of co-ordinated epigenome-wide association studies (EWAS) of paternal prenatal Body Mass Index (BMI) (with and without adjustment for maternal BMI) in relation to DNA methylation in offspring blood at birth (13 datasets; total n= 4,894) and in childhood (six datasets; total n = 1,982). We found little evidence of association at either time point: for all CpGs, the False Discovery Rate-adjusted P-values were >0.05. In sex-stratified analyses, we found just four CpGs where there was robust evidence of association in female offspring. To compare our findings to those of other studies, we conducted a systematic review, which identified seven studies, including five candidate gene studies showing associations between paternal BMI/obesity and offspring or sperm DNA methylation at imprinted regions. However, in our own study, we found very little evidence of enrichment for imprinted genes.

Conclusion: Our findings do not support the hypothesis that paternal BMI around the time of pregnancy is associated with offspring blood DNA methylation, even at imprinted regions.

Introduction

Accumulating evidence links paternal exposures in the peri-conceptual period to offspring health outcomes(1–3). Results from animal studies support a causal role for “paternal effects”(4) that are independent of maternal effects(2). Whereas prenatal maternal effects are most commonly postulated to occur via fetal intrauterine exposure, the suggested biological mechanisms underlying paternal effects(3,5) include germline *de novo* genetic mutations(6) or epigenetic changes(7), or alterations of components or properties of semen(8).

Epigenetic mechanisms that have been studied in relation to paternal exposures include DNA methylation, histone modification and microRNA expression(7), all of which can induce mitotically-heritable alterations in gene expression without changes to the DNA sequence. At most loci, patterns of DNA methylation are erased shortly after

fertilization to create totipotent cells. However, some loci (most notably imprinted regions) can evade erasure, thus raising the possibility for intergenerational paternal epigenetic inheritance(9,10).

A large proportion of the research on paternal effects has explored dietary and metabolic exposures in relation to offspring metabolism and adiposity, sometimes including exploration of the potential mediating role of DNA methylation in sperm and offspring. Animal models of high fat diet-induced paternal obesity and diabetes have found associations with impaired offspring development(11) and offspring metabolic phenotypes and DNA methylation in pancreatic islets(12). In humans, a recent systematic review(13) found conflicting evidence on the association between paternal body mass index (BMI) and offspring birthweight, and some evidence of an association with greater offspring BMI, weight or body fat mass in childhood. A small number of studies have also found links between paternal BMI and sperm or offspring neonatal blood DNA methylation, but these have been based on candidate genes and/or had very limited sample sizes(14–20).

In the Pregnancy And Childhood Epigenetics (PACE) consortium(21), we conducted meta-analyses of coordinated epigenome-wide association studies (EWAS) exploring prenatal paternal BMI in relation to genome-wide DNA methylation at birth (cord blood; 13 independent datasets across ten cohorts) and in childhood (peripheral blood; six datasets across nine cohorts). A major challenge in studies of paternal effects is the correlation between paternal and maternal phenotypes and exposures, which could be due to shared environments and/or assortative mating(22). Several studies (for example, 22–24), including a large PACE consortium study(26), have shown that maternal BMI is associated with variation in offspring DNA methylation. To help disentangle any paternal effect from a maternal effect, we adjusted paternal associations for maternal BMI. We also conducted additional analyses with maternal BMI as the main exposure (unadjusted and adjusted for paternal BMI) and compared results to our primary analyses where paternal BMI was the main exposure. Finally, we systematically reviewed the literature on associations between paternal BMI and offspring or sperm DNA methylation in humans and assessed whether our results were enriched for imprinted loci and other regions identified by previous studies.

Methods

Meta-analysis of epigenome-wide association studies (EWAS)

Participating cohorts

The EWAS meta-analysis at birth included data from 13 independent datasets from ten cohorts in PACE (n=4,894): The Avon Longitudinal Study of Parents and Children (ALSPAC)(27–29); two independent datasets from Born in Bradford (BiB)(30); Center for the Health Assessment of Mothers and Children of Salinas (CHAMACOS)(31); Generation R Study (GENR)(32,33); the Genetics of Overweight Young Adults(34) (GOYA; nested within the Danish National Birth Cohort); Infancia y Medio Ambiente (INMA)(35); three independent datasets from the Norwegian Mother and Child Cohort Study (MoBa1, MoBa2, MoBa3)(36,37); Project Viva (Viva)(38); and two independent datasets generated as part of the EXPOsOMICS(39) project Piccolipiù(40) and RHEA(41).

The EWAS meta-analysis at childhood included data from six datasets from nine PACE cohorts (n=1,982): ALSPAC; CHAMACOS; Generation R; INMA, Project Viva and Human Early Life Exposome study (HELIX)(42). HELIX is a sample containing childhood methylation data pooled from several other cohorts (BIB; EDEN(43); INMA; MoBa; and RHEA). We conducted a sensitivity analysis excluding HELIX, because of concerns about potential sample overlap (albeit at a different time-point) with the INMA sample.

Cohorts are summarised in Table 1 and more detailed methods for each cohort are provided in Supporting Information File S1.

Table 1: A summary of key information for participating cohorts.

Cohort	Country and ancestry	Methylation time point and array		Paternal BMI data source			Maternal BMI data source	
		Birth	Childhood	Measured	Self-reported*	Reported by mother*	Measured*	Self-reported*
ALSPAC	United Kingdom; Northern European	450k	450k	×	✓ (first trimester)	×	×	✓ (pre-pregnancy)
BIB (Asian)	United Kingdom; Pakistani	EPIC	×	×	✓ (first trimester)	×	✓ (first trimester)	
BIB (European)	United Kingdom; Northern European	EPIC	×	×	✓ (first trimester)	×	✓ (first trimester)	
CHAMACOS	United States; Mexican American	450k	450k	✓ (around delivery)	×	×	Height only (first trimester)	Weight only (pre-pregnancy)
Generation R	The Netherlands; Northern European	450k	450k	✓ (first trimester)	×	×	×	✓ (pre-pregnancy)
GOYA	Denmark; Northern European	450k	×	×	×	✓ (18 months after delivery)	×	✓ (pre-pregnancy)
HELIX (BIB, EDEN, INMA, MoBa, Rhea)	Mixed (UK, France, Spain, Lithuania, Norway, Greece); European	×	450k	×	BIB, MoBa (first trimester), EDEN (third trimester)	INMA, Rhea (first trimester)	BIB (BMI, first trimester), INMA, Rhea (height only, first trimester), EDEN (height only, second trimester)	EDEN (weight only, pre-pregnancy), INMA, Rhea (weight only, first trimester), MoBa (BMI, first trimester)
INMA	Spain; Southern European	450k	450k	×	×	✓ (first trimester)	Height (first trimester)	Weight (first trimester)
MoBa 1	Norway; Northern European	450k	×	×	×	✓ (first trimester)	×	✓ (first trimester)
MoBa 2	Norway; Northern European	450k	×	×	×	✓ (first trimester)	×	✓ (first trimester)
MoBa 3	Norway; Northern European	450k	×	×	×	✓ (first trimester)	×	✓ (first trimester)
Piccolipiù	Italy; Southern European	450k	×	×	×	✓ (around delivery)	×	✓ (around delivery)
Project Viva	United States; European	450k	450k	×	×	✓ (first trimester)	×	✓ (pre-pregnancy)
Rhea	Greece (Crete); Southern European	450k	×	×	×	✓ (first trimester)	Height (first trimester)	Weight (first trimester)

*timepoints (i.e. pre-pregnancy, first trimester, etc) refer to the period participants were asked to report on rather than when the questionnaire was completed

Measurement of paternal and maternal BMI

Paternal and maternal BMI was calculated using either self-reported or measured height and weight of participants (Table 1). For paternal BMI, cohorts selected a timepoint as close to the time of pregnancy as possible. Where possible, inclusion was restricted to biological fathers, but paternity status was not ascertainable in all cohorts. For maternal BMI, cohorts used self-reported pre-pregnancy BMI or BMI measured in the early stages of pregnancy. BMI was calculated in kg/m² and then standardised for each cohort by converting to internal Z-scores.

Measurement of DNA methylation

Biological samples were either cord blood samples from neonates or peripheral blood samples from children. DNA methylation was measured using either the Illumina Infinium[®] HumanMethylation450 (486,425 probes) or EPIC (866,553 probes) BeadChip assay (Table 1). Probes that were common to both arrays (maximum 453,008) were included in the meta-analysis. Each cohort conducted its own laboratory methods, quality control and normalisation, as detailed in Supporting Information File S1. All cohorts used normalised, untransformed methylation beta values on a scale of 0 to 1.

Other covariates

Questionnaire data was used to derive the following covariates, which were included in all adjusted models regardless of whether the main exposure was paternal or maternal BMI: maternal and paternal age (years); maternal smoking status during pregnancy (preferred definition: smoking throughout pregnancy/no smoking in pregnancy or quitting in the first trimester, but some cohorts used any/no smoking in pregnancy); paternal smoking status during or prior to pregnancy (any smoking in this time/no smoking in this time); maternal parity (one or more previous pregnancies/no previous pregnancies); and paternal socioeconomic position (higher/lower). For the latter variable, precise definitions were cohort-specific but most cohorts used paternal educational attainment (if data on paternal socioeconomic position were not available, maternal socioeconomic position was used). In addition, some models were stratified by sex of the child. Cohort specific information on covariate definitions is provided in Supporting Information File S1.

Systematic differences between samples (for example, those influenced by technical batch) were addressed by generating 20 surrogate variables using the SVA(44,45) R package. The number of surrogate variables (i.e. 20) was estimated using the ALSPAC dataset, and then each cohort estimated 20 SVs using their own data. Cellular heterogeneity was addressed by estimating cell type proportions using the Houseman algorithm(46) and either a cord blood reference panel(47) or a peripheral blood reference panel(48), depending on the methylation time-point.

Cohort-specific EWAS

Each cohort performed independent EWAS according to a common, pre-specified analysis plan and R script (available on our Open Science Framework site at doi:10.17605/OSF.IO/EBTW7). If cohorts had data for both timepoints, EWAS were performed separately for birth and childhood. Potential methylation outliers, thought to be introduced by a technical error or a rare SNP were identified and removed using the Tukey method as previously described(49).

Linear regression models, modelling offspring methylation as the outcome and parental BMI as the exposure, were applied to each CpG using the Limma R package(50). Two main models were run for both paternal and maternal BMI: 1) a basic model where paternal or maternal BMI associations were adjusted for estimated cell proportions, surrogate variables for technical batch, maternal and paternal age, maternal smoking status during pregnancy, paternal smoking status during or prior to pregnancy, paternal socioeconomic position and maternal parity; and 2) a model with additional adjustment for the other parent's BMI. In secondary analyses, the mutually adjusted models (i.e. model 2) were run stratified by sex of the offspring. This is because, although sex is not a true confounder (i.e. it does not influence pre-pregnancy parental BMI), it is a major source of variation in methylation(51) and there is some literature to support paternal effects occurring in a sex-specific manner (52,53). All probes were annotated to the human reference genome version 19, build 37.

Other cohort-specific analyses

To allow us to explore the extent to which paternal BMI is associated with offspring blood cell proportions (which is an important source of variation in methylation data, but also an interesting phenotype to study in its own right

(54)), cohorts provided results (effect estimate, standard error, p-value) for linear regressions of each estimated cell type on paternal BMI. These were then meta-analysed using the R package metafor (55).

Cohorts also provided the Spearman coefficient and P-value for the correlation between maternal and paternal BMI to allow us to assess the likelihood of assortative mating as an explanation for our results.

Meta-analysis

Fixed-effects meta-analysis weighted by the inverse of the variance was performed at the University of Bristol using METAL(56). A shadow meta-analysis was also conducted independently by an author at the University of Hasselt (Rossella Alfano). All code used to perform these analyses is provided on our Open Science Framework site at doi:10.17605/OSF.IO/EBTW7.

The EWAS meta-analysis pipeline was as follows:

- 1) Filter probes from cohort results files to remove probes that are not common to both the EPIC and 450k array, control and QC probes, probes on SNPs, cross-hybridizing probes according to Chen et al.(57), and probes on the sex chromosomes;
- 2) Perform quality checks of cohort results by plotting correlation matrices of effect estimates generated by different models, generating QQ plots and calculating Lambda values, plotting the distribution of effect estimates, and producing “precision plots” of 1/median standard error against the square root of the sample size for each cohort and model;
- 3) Conduct a fixed effects meta-analysis using METAL for each model;
- 4) Adjust meta-analysis P-values for multiple testing using the false discovery rate (FDR) method. The threshold used to define statistical evidence of association was FDR-adjusted P-value<0.05.
- 5) Perform checks of meta-analysed results by plotting a correlation matrix of effect estimates generated by different models, generating QQ plots and calculating Lambda values;
- 6) Conduct a leave-one-out analysis using the R package metafor(55) at sites with the smallest P-values. The leave-one-out survival criteria we specified are: when any single cohort is omitted, the meta-analysis effect estimate should be in the same direction, not attenuate substantially (arbitrarily defined as >20% change-in-estimate), and not have a confidence interval that crosses the null;
- 7) Conduct a meta-regression to explore the impact of average age at DNA sample collection on the childhood EWAS meta-analysis results;
- 8) Conduct a sensitivity analysis at the birth time point, excluding cohorts that collected information on paternal BMI based on maternal-report (GOYA, INMA, MoBa, Piccolipiu, Project Viva, Rhea), because of concern about measurement error.
- 9) Conduct a sensitivity analysis at the childhood time point excluding HELIX because of concerns about overlap between some individuals in this dataset and individuals in INMA.

Comparison of results for maternal and paternal BMI

To assess whether paternal and maternal BMI are associated with offspring methylation to similar extents and with similar distributions throughout the genome, we compared effect estimates for the EWAS meta-analyses with and without mutual adjustment for the other parent’s BMI. At the top ten CpGs associated with paternal BMI with the smallest P-values, we calculated the Cochran Q statistic to explore statistical evidence for differences between the maternal and paternal effect estimates.

To explore the extent to which maternal BMI might explain associations between paternal BMI and offspring methylation, we conducted Kolmogorov-Smirnov tests to assess enrichment of our EWAS meta-analysis results for CpGs previously found to be associated with maternal BMI in the PACE consortium (26).

Systematic literature review

To identify previous human studies of paternal adiposity and offspring or sperm methylation, we performed a systematic search of PubMed using the R package RISmed(58). Search terms (Supporting Information File S2) were formed using intersections of terms related to paternity, methylation and adiposity. Duplicate PubMed IDs and ineligible article types (non-journal articles and reviews) were excluded. Titles/abstracts were manually screened to

assess inclusion based on whether the study investigated paternal adiposity and germ cell/offspring methylation, and whether it did so in humans. Information on study design, exposure, outcome, tissue, sample size, species and key relevant findings was manually extracted from the full text of included articles.

Testing for enrichment of candidate loci identified through the literature

To explore enrichment of our EWAS meta-analysis results for loci identified through our literature search, we tested whether the distribution of EWAS meta-analysis P-values at these regions deviates from a null (uniform) distribution using Kolmogorov-Smirnov tests, and compared the direction of effect estimate to what has been reported previously. To identify CpG probes falling within a particular gene, we defined the location of the gene according to the GeneCards database (<https://www.genecards.org>) and human genome version 19 build 37.

Availability of data and code

All code used to generate our results is available on our Open Science Framework site at doi:10.17605/OSF.IO/EBTW7. We are not able to publicly share individual level data from participating cohorts due to issues with consent and ethics, however all summary statistics generated by meta-analysis are also available at doi:10.17605/OSF.IO/EBTW7.

Results

EWAS meta-analysis at birth

Cohort summaries

Thirteen independent datasets were included in the EWAS meta-analyses at birth. Table 2 summarises key characteristics of these cohorts (more details in Supporting Information File S3). Around 48% of the babies were female. In all cohorts, paternal BMI had a higher mean and a lower standard deviation compared to maternal BMI. There was moderate correlation between both parents' BMIs ($r=0.2$) which might be explained by assortative mating and/or shared environment.

Table 2. A summary of sex of the child and parental BMI for each cohort in the birth meta-analysis.

Study	N (N female, N male)	Mean paternal BMI in kg/m ² (SD)	Percentage fathers with BMI ≥ 30 (i.e. obese)	Mean maternal BMI in kg/m ² (SD)	Percentage mothers with BMI ≥ 30 (i.e. obese)	Spearman's correlation between paternal and maternal BMI (P-value)
ALSPAC	531 (267, 264)	25.0 (3.0)	6%	22.6 (3.3)	4%	0.2 (7.6x10 ⁻⁷)
Born in Bradford (British Asian)	70 (27*, 43)	26.6 (5.3)	17%	26.2 (5.8)	21%	0.2 (1.1x10 ⁻¹)
Born in Bradford (White British)	115 (59, 56)	27.5 (4.7)	24%	26.7 (6.1)	24%	0.4 (9.1x10 ⁻⁴)
CHAMACOS	158 (80, 78)	28.0 (4.2)	32%	26.5 (4.5)	19%	0.1 (1.1x10 ⁻¹)
Generation R	947 (476, 471)	25.2 (3.2)	7%	23.2 (3.9)	6%	0.2 (8.8x10 ⁻⁸)
GOYA	390 (190, 200)	25.1 (3.1)	6%	23.4 (3.7)	6%	0.1 (7.1x10 ⁻³)
INMA	352 (173, 179)	25.8 (3.5)	13%	23.8 (4.5)	9%	0.2 (4.7x10 ⁻⁵)
MoBa1	982 (458, 524)	25.6 (3.1)	8%	24.0 (4.1)	9%	0.1 (6.2*10 ⁻⁵)
MoBa2	621 (275, 346)	25.7 (3.1)	8%	24.3 (4.6)	11%	0.2 (2.2*10 ⁻⁸)
MoBa3	212 (109, 103)	26.0 (3.1)	9%	24.0 (3.9)	9%	0.3 (2.0*10 ⁻⁴)
Piccolipiu	98 (45, 53)	24.9 (3.0)	3%	22.6 (3.9)	8%	0.3 (2.6x10 ⁻³)
Project Viva	324 (160, 164)	26.3 (3.6)	13%	24.3 (4.9)	12%	0.3 (1.2x10 ⁻⁶)
RHEA	94 (45, 49)	27.2 (4.0)	20%	25.1 (5.5)	16%	0.3 (1.1x10 ⁻²)
Total or mean*	4,894 (2,337, 2,530)	26.98 (3.2)	10%	23.7 (4.1)	9%	0.2

*In the Total row, average BMI and correlation values were calculated by weighting by the inverse variance for each cohort.

Quality checks

Quality checks of cohort-specific EWAS results are summarised in Supporting Information File S4. Generally, no major problems were identified, but there were a small number of extreme effect estimates in some cohorts, mainly

in the sex-stratified models where the sample sizes were lower. Quality checks of the meta-analysis results (Supporting Information File S5) showed that these outliers had little weighting in the meta-analysis and therefore little impact on the EWAS meta-analysis results. Therefore, these values were not excluded from the meta-analysis.

Associations between paternal BMI and offspring methylation at birth

Table 3 summarises the results of each EWAS meta-analysis model (full results available on our Open Science Framework site at doi:10.17605/OSF.IO/EBTW7). After FDR correction for multiple testing, we did not identify any CpG sites where there was evidence of an association between paternal BMI and offspring DNA methylation at birth (FDR<0.05). Effect estimates for the model with and without adjustment for maternal BMI were very similar: they correlated highly (Spearman's $r=0.97$) and the median percentage difference in effect estimates between models was 0.23% (IQR: 0.1%, 0.6%), suggesting that maternal BMI was not a strong confounder. In a sensitivity analysis, excluding cohorts that defined paternal BMI based on maternal-report did not increase the number of CpGs with FDR-corrected $P<0.05$.

Table 3. A summary of results of each EWAS meta-analysis model at birth

Model*	CpGs with FDR-corrected $P<0.05$	CpGs surviving leave-one-out analysis	Meta-analysis sample size	Genomic inflation factor (λ)**
Paternal BMI				
All offspring	0	n.a.	4894	1.13
All offspring (additionally adjusted for maternal BMI)	0	n.a.	4894	1.16
Female offspring (additionally adjusted for maternal BMI)	7	4 (57%)	2337	1.10
Male offspring (additionally adjusted for maternal BMI)	0	n.a.	2530	1.10
Maternal BMI				
All offspring	39	35 (90%)	4894	1.10
All offspring (additionally adjusted for paternal BMI)	30	28 (93%)	4894	1.11
Female offspring (additionally adjusted for paternal BMI)	9	4 (44%)	2337	1.05
Male offspring (additionally adjusted for paternal BMI)	1	1 (100%)	2530	1.09

*(all models adjusted for maternal and paternal age, maternal and paternal smoking, paternal SEP, maternal parity, estimated cell counts and 20 surrogate variables)

** The genomic inflation factor (λ) estimates the extent of bulk inflation of EWAS p-values and the excess false positive rate. 1 = no inflation; >1 some evidence of inflation.

In a sex-stratified analysis adjusted for maternal BMI, we found some evidence of association between methylation and paternal BMI at seven CpGs in female offspring only (Table 4). Three of these did not survive the leave-one-out analysis (i.e. on omission of one cohort, the effect estimates were in different directions, changed considerably (>20%) and/or had confidence intervals that crossed the null; results in Supporting Information File S6).

Table 4. CpGs associated with paternal BMI with FDR-adjusted $P < 0.05$ in female offspring only at birth (estimates are adjusted for maternal BMI)

CpG (gene)	Estimate (95% CI) in females	P value in females	Heterogeneity I^2 in females (P-value)	Estimate (95% CI) in males	P value in males	Estimate (95% CI) in all	P value in all
*cg03395511 (<i>DUSP22</i>)	2.93 (2.55, 3.30)	7×10^{-53}	98.7 (6x10 ⁻¹⁷⁹)	0.39 (0.01, 0.77)	0.04	0.07 (-0.21, 0.35)	0.6
*cg27586797 (intergenic)	-4.90 (-5.80, -4.00)	2×10^{-26}	75.8 (1x10 ⁻⁵)	1.33 (-0.03, 2.68)	0.05	-0.30 (-1.25, 0.65)	0.5
*cg04481923 (<i>MIR886</i>)	2.07 (1.42, 2.72)	4×10^{-10}	90.4 (3x10 ⁻¹⁹)	-0.08 (-0.73, 0.57)	0.8	-0.02 (-0.46, 0.43)	0.9
cg09452082 (intergenic)	-0.43 (-0.59, -0.26)	4×10^{-7}	79.3 (2x10 ⁻⁷)	-0.13 (-0.29, 0.04)	0.1	-0.18 (-0.29, -0.06)	0.003
cg23487201 (<i>APCDD1L</i>)	-0.17 (-0.24, -0.11)	5×10^{-7}	15.2 (0.3)	0.03 (-0.03, 0.09)	0.4	-0.06 (-0.10, -0.01)	0.01
cg19702703 (<i>AFAP1</i>)	-0.45 (-0.63, -0.27)	6×10^{-7}	1.3 (0.4)	-0.13 (-0.30, 0.04)	0.1	-0.23 (-0.35, -0.11)	0.0001
cg00039564 (<i>TAX1BP1</i>)	-0.19 (-0.26, -0.11)	8×10^{-7}	23.4 (0.2)	0.03 (-0.04, 0.11)	0.4	-0.05 (-0.10, 0.00)	0.06

“Estimate” can be interpreted as difference in offspring percentage methylation per one standard deviation increase in paternal BMI, after adjustment for all covariates including maternal BMI

* CpG did not survive leave-one-out analysis, indicating that the strong association was driven by a single cohort

Comparison of estimates for paternal and maternal BMI

Maternal BMI was associated with methylation at many more CpG sites than paternal BMI was (Table 3). In the models not stratified by sex, there were 39 CpGs associated with maternal BMI before adjustment for paternal BMI and 30 after (FDR-adjusted $P < 0.05$), 26 overlapped. Most associations survived a leave-one-out sensitivity analysis.

At the top CpGs associated with paternal BMI at a relaxed (but arbitrary) P-value threshold of $P < 1 \times 10^{-5}$, the estimated paternal effect was greater (further from the null) than the estimated maternal effect, even after adjustment for the other parents’ BMI (Figure 1). There was also strong evidence of heterogeneity between the maternal and paternal mutually adjusted estimates (all heterogeneity FDR-adjusted P-values < 0.05 ; I^2 ranging 86.6 to 96.4). However, apart from at the most robustly paternal BMI-associated CpG sites, this pattern (of greater paternal than maternal effect estimates) was not observed. In fact, throughout the genome, around half (49.6%) of CpGs had larger absolute effect estimates for paternal BMI and the other half (50.2%) had larger absolute effect estimates for maternal BMI. Figure 2 shows that maternal effect estimates (before adjustment for paternal BMI) were similar in size to paternal effect estimates, and the distribution of effect estimates across the genome was similar regardless of parent. Results were very similar after mutual adjustment for the other parent’s BMI (Supporting Information File S7).

CpGs showing strongest statistical evidence of association with paternal BMI

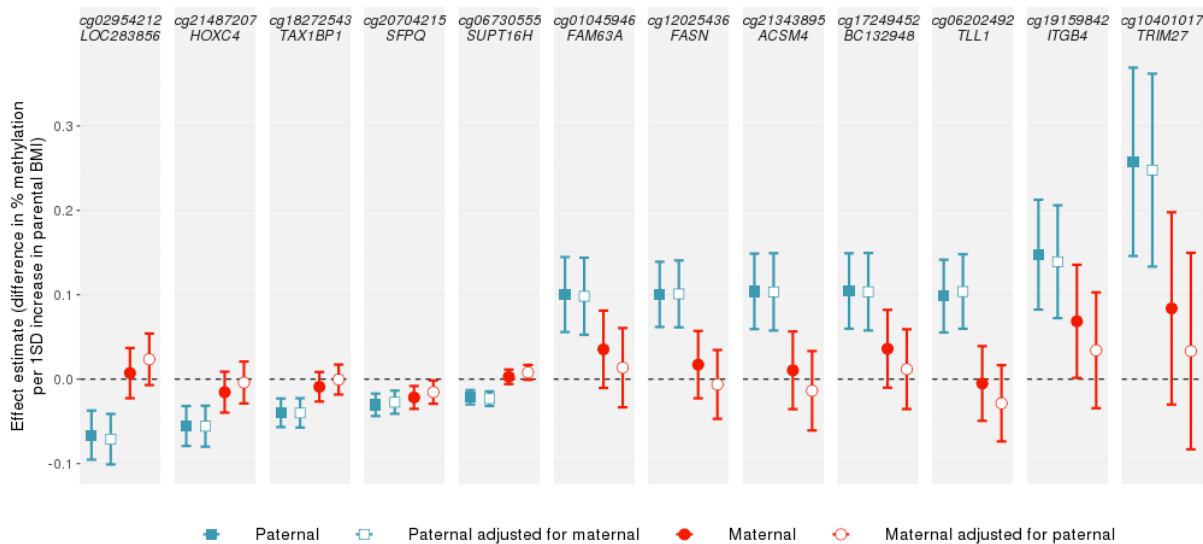


Figure 1. A comparison of paternal and maternal BMI effect estimates at CpGs with $P < 1 \times 10^{-5}$ in the paternal BMI EWAS meta-analysis at birth. CpGs were selected if they were associated with paternal BMI with a P-value $< 1 \times 10^{-5}$ in the model that was not adjusted for maternal BMI. Points show EWAS meta-analysis effect estimates, bars show 95% confidence intervals. Confidence intervals are not adjusted for multiple testing.

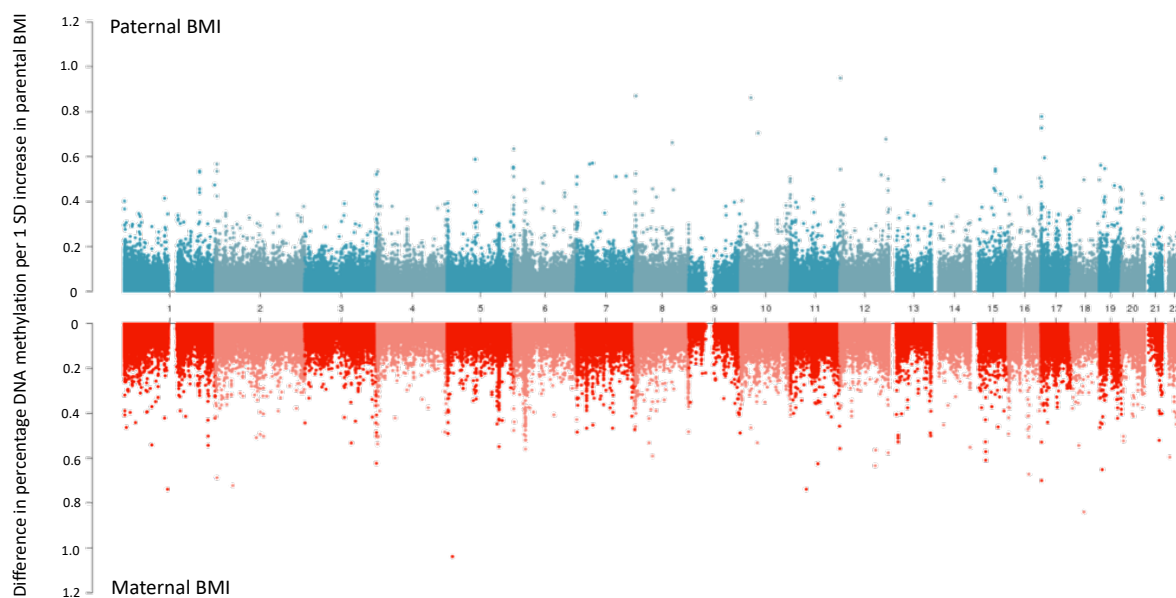


Figure 2. A comparison of paternal and maternal BMI EWAS effect estimates across the genome. Absolute effect estimates (y-axis) are plotted against genomic location (x-axis; numbers indicate chromosome number). Paternal BMI EWAS meta-analysis results are plotted on the top, with maternal EWAS meta-analysis results on a mirrored axis below. Models were not mutually adjusted for the other parent's BMI (for a comparison of the mutually adjusted results, see Supporting Information File S7).

In a previous PACE consortium study (26), we identified 86 cord blood CpGs associated with maternal BMI in an EWAS meta-analysis across 19 cohorts (nine of which also contributed results to the current study). Of the 86 CpGs identified in that previous study (which had higher statistical power to detect associations), 64 were available in the current study after probe filtering. To explore the extent to which maternal BMI might be driving any association between paternal BMI and offspring methylation in the current study, we assessed enrichment of our paternal BMI EWAS meta-analysis results for these 64 maternal BMI-associated CpGs. We found little evidence of enrichment (Kolmogorov-Smirnov P-value for inflation of EWAS P-values = 0.54 in EWAS unadjusted for maternal BMI; 0.61 in EWAS adjusted for maternal BMI), suggesting that any relationship between paternal BMI and offspring methylation

was unlikely to be driven by confounding by maternal BMI, even before adjustment for maternal BMI. Conversely, the maternal BMI EWAS meta-analysis results in the current study were highly enriched for previously-identified maternal BMI-associated CpGs (Kolmogorov-Smirnov P for inflation = 2.2×10^{-16} in EWAS adjusted and unadjusted for paternal BMI). This finding was as expected, given that the main exposure was the same and the samples were overlapping, but it highlights the ability of this analysis to detect strong associations with maternal BMI if they exist.

EWAS meta-analysis at childhood

Cohort summaries

Six cohorts were included in the EWAS meta-analyses at childhood. Table 5 summarises key characteristics of these cohorts. Around 48% of the children were female. In all cohorts, paternal BMI had a higher mean and a lower standard deviation compared to maternal BMI.

Table 5. A summary of sex and age of the child and parental BMI for each cohort in the childhood meta-analysis.

Study	N (N female, N male)	Mean age of children in years (SD)	Mean paternal BMI in kg/m ² (SD)	Percentage fathers with BMI ≥ 30 (i.e. obese)	Mean maternal BMI in kg/m ² (SD)	Percentage mothers with BMI ≥ 30 (i.e. obese)	Spearman's correlation between paternal and maternal BMI (P-value)
ALSPAC	570 (280, 290)	7.5 (0.2)	25.0 (3.1)	7%	22.6 (3.4)	4%	0.2 (5.1×10^{-6})
CHAMACOS	108 (56, 52)	9.2 (0.3)	27.6 (3.4)	27%	27.0 (4.4)	22%	0.2 (2.9×10^{-2})
Generation R	335 (174, 161)	6.0 (0.4)	25.0 (3.3)	6%	24.1 (3.9)	6%	0.2 (1.5×10^{-5})
HELIX	516 (231, 285)	8.4 (1.7)	26.6 (3.7)	18%	23.9 (4.4)	9%	0.3 (1.1×10^{-10})
INMA	177 (87, 90)	4.4 (0.2)	26.0 (3.6)	15%	24.6 (5.1)	13%	0.3 (9.6×10^{-5})
Project Viva	276 (132, 144)	7.8 (0.7)	26.4 (3.7)	15%	24.5 (4.7)	13%	0.4 (4.2×10^{-13})
Total	1982 (960, 1022)	6.9 (0.3)	25.7 (3.4)	12%	24.3 (5.2)	9%	0.3

* In the Total row, average BMI, age and correlation values were calculated by weighting by the inverse variance for each cohort.

Quality checks

Quality checks of cohort-specific EWAS results are summarised in Supporting Information File S8. Meta-analysis quality checks are summarised in Supporting Information File S9. We did not exclude any data following these checks.

Associations between paternal BMI and offspring methylation in childhood

Table 6 summarises the results of each EWAS meta-analysis model (full results available on our Open Science Framework site at [doi:10.17605/OSF.IO/EBTW7](https://doi.org/10.17605/OSF.IO/EBTW7)). There was one CpG where we found evidence (FDR-adjusted $P < 0.05$) of an association with paternal BMI (cg2720130 at *GIP* on chromosome 17; β 0.4%, 95% CI 0.2% to 0.5%, P 8.8×10^{-8}), and one (different) CpG with evidence of an association with maternal BMI (cg07099084 in an intergenic region on chromosome 1, β -0.05%, 95% CI -0.03% to -0.06%, P 1.1×10^{-7}). However, neither survived mutual adjustment for the other parent's BMI, neither was associated with parental BMI in the birth analysis, and one (cg07099084) did not survive a leave-one-out analysis (Supporting Information File S10). Excluding HELIX from the full meta-analysis did not change the number of associations with FDR-adjusted $P < 0.05$. A meta-regression also showed little evidence that mean age of the children at methylation measurement was associated with EWAS meta-analysis effect estimates (Supporting Information File S10).

Table 6. A summary of results of each EWAS meta-analysis model at childhood

Model*	CpGs with FDR-corrected P<0.05	CpGs surviving leave-one-out analysis	Meta-analysis sample size	Genomic inflation factor (λ)**
Paternal BMI				
All offspring	1	1 (100%)	1982	1.03
All offspring (additionally adjusted for maternal BMI)	0	n.a.	1982	1.00
Female offspring (additionally adjusted for maternal BMI)	0	n.a.	960	1.00
Male offspring (additionally adjusted for maternal BMI)	0	n.a.	1022	1.05
Maternal BMI				
All offspring	1	0 (0%)	1982	1.11
All offspring (additionally adjusted for paternal BMI)	0	n.a.	1982	1.08
Female offspring (additionally adjusted for paternal BMI)	0	n.a.	960	1.06
Male offspring (additionally adjusted for paternal BMI)	0	n.a.	1022	1.07

*(all models adjusted for maternal and paternal age, maternal and paternal smoking, paternal SEP, maternal parity, estimated cell counts and 20 surrogate variables)

** The genomic inflation factor (λ) estimates the extent of bulk inflation of EWAS p-values and the excess false positive rate. 1 = no inflation; >1 some evidence of inflation.

Analysis of cell proportions

Paternal BMI was not associated with the proportion of any cell type in offspring blood (Supporting Information File S11), except for a very small difference in the estimated proportion of nucleated red blood cells in offspring cord blood (nRBCs; 0.001 greater proportion of nRBCs per 1SD increase in paternal BMI; 95% CI 0.0004, 0.0017; P=0.001) and an even smaller difference in the proportion of CD4 T-cells in childhood peripheral blood (0.0007 lower proportion of CD4 T-cells per 1 SD increase in paternal BMI; 95% CI -0.0013, -0.0002; P=0.007), which appeared to be largely driven by the HELIX dataset and did not survive a sensitivity analysis excluding HELIX.

Systematic literature review

Figure 3 summarises the workflow and Table 7 outlines the seven included studies resulting from a systematic literature review of human studies of paternal adiposity and offspring or gamete methylation. There were five studies of imprinted regions and two untargeted array-based studies. Four studies investigated DNA methylation in offspring cord blood, two in paternal sperm and one in both.

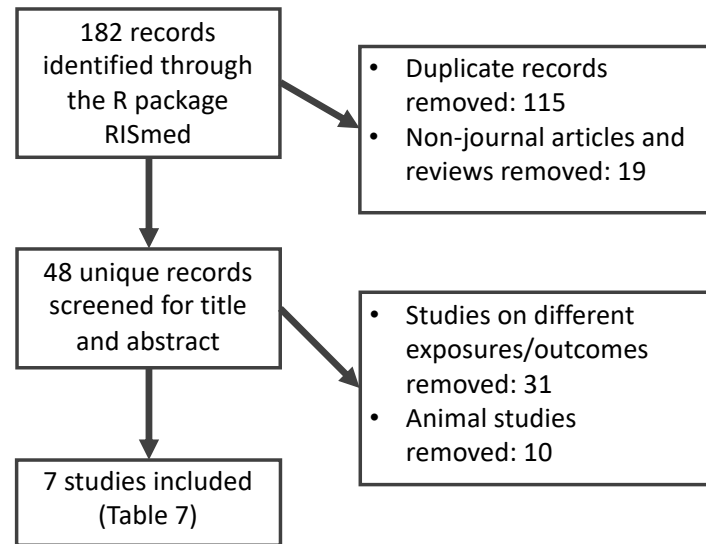


Figure 3. The systematic review process used to identify human studies of paternal adiposity and offspring or germ cell methylation

Table 7. Summary of identified studies of paternal adiposity and sperm or offspring DNA methylation. In all studies of offspring methylation, the estimated effect of paternal BMI/obesity was adjusted for maternal BMI/obesity.

Study	Exposure	Outcome	Sample size	Studied regions	Key findings
Noor et al. 2019 (20)	Paternal BMI	Offspring DNA methylation at birth (cord blood), age 3 and age 7 (peripheral blood)	429	Untargeted (Illumina 450k array)	Paternal BMI was associated with cord blood DNA methylation at 9 CpGs with an FDR-adjusted P-value <0.05. Three of these persisted at age 3 and one of those also persisted at age 7. When stratified by maternal BMI, no CpGs were associated with paternal BMI in the subset with maternal BMI <25, but 18 CpGs were identified in the subset with maternal BMI ≥25. None persisted at later time points.
Potabattula et al. 2019 (19)	Paternal BMI	Sperm DNA methylation and cord blood DNA methylation	294 (sperm) and 113 (cord blood)	Imprinted genes: <i>MEST/PEG1, SNRPN/PEG4, NNAT/PEG5, SGCE/PEG10, H19-IG, IGF2, and MEG3-IG</i> , and one obesity related gene: <i>HIF3A</i>	Paternal BMI was positively associated with MEG3 methylation in sperm and in male (but not female) offspring. There were some other small magnitude associations in sex-stratified analyses.
Potabattula et al. 2018(17)	Paternal BMI	Cord blood DNA methylation	46	Six imprinted genes: <i>H19, IGF2, MEST, PEG3, MEG3, NNAT</i>	Paternal BMI was positively associated with methylation of the paternal <i>MEST</i> allele.
Soubry et al. 2016(16)	Paternal overweight or obesity	Sperm DNA methylation	67 (23 overweight or obese)	12 imprinted genes: <i>MEG3, MEG3-IG, IGF2, H19, GRB10, NDN, NNAT, PLAGL1, SGCE/PEG10, SNRPN, PEG1/MEST, PEG3</i>	Paternal overweight/obesity was associated with lower sperm methylation at <i>MEG3, NDN, SNRPN</i> and <i>SGCE/PEG10</i> and higher methylation at <i>MEG3-IG, H19, IGF2</i> , compared to controls. There was little evidence of association at <i>GRB10, NNAT, PLAGL1, PEG1/MEST</i> and <i>PEG3</i> .
Donkin et al. 2015(18)	Paternal obesity	Sperm DNA methylation	23 (10 obese)	Untargeted (RRBS)	There were 9,081 unique genes differentially methylated in the sperm of lean compared to obese men with an FDR-adjusted P<0.1 (7,059 with FDR-adjusted P<0.05).
Soubry et al. 2015(15)	Paternal obesity and paternal BMI	Cord blood DNA methylation	63 (16 obese)	Seven imprinted genes: <i>MEG3, MEST, NNAT, PEG3, PLAGL1, SGCE, PEG10</i>	Paternal obesity was associated with lower offspring methylation at <i>MEST, NNAT</i> and <i>PEG3</i> . Paternal BMI was positively correlated with methylation at <i>SGCE/PEG10</i> .
Soubry et al. 2013(14)	Paternal obesity	Cord blood DNA methylation	70 (16 obese)	Two imprinted genes: <i>H19, IGF2</i>	Paternal obesity was associated with lower methylation at <i>IGF2</i> compared to controls, but there was no difference at <i>H19</i> .

RRBS: reduced representation bisulfite sequencing

Comparison to the literature

Imprinted regions identified in studies by Soubry et al. and Potabattula et al.

At paternally-imprinted regions identified in the literature review, EWAS meta-analysis effect estimates for the association between paternal BMI and cord blood methylation (adjusted for maternal BMI) were small with no clear trend in direction (Figure 4). Findings were similar for the EWAS model unadjusted for maternal BMI (Supporting Information File S12).

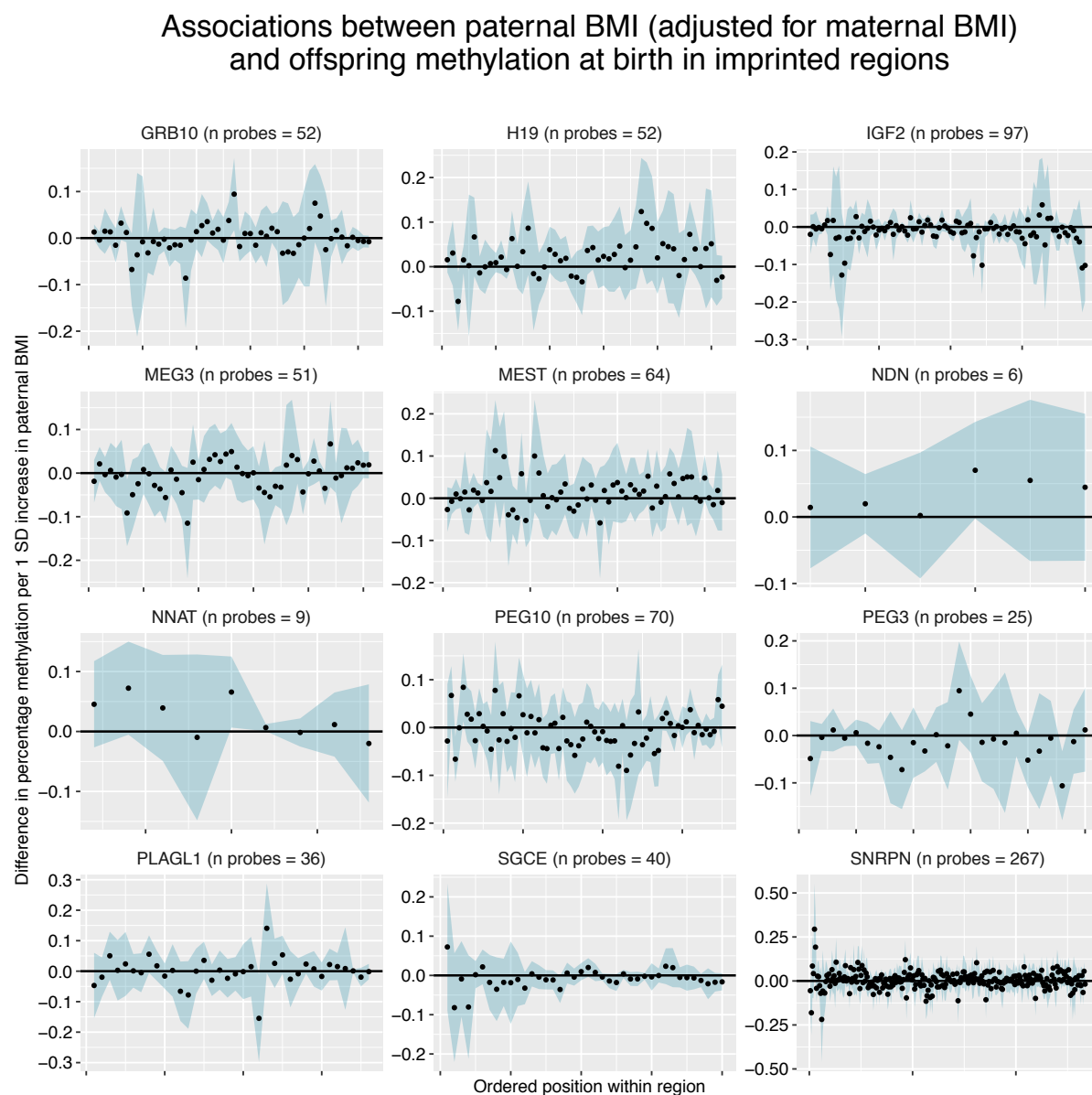


Figure 4. Paternal BMI effect estimates at CpGs within imprinted regions. Each panel shows a different imprinted gene, with CpGs arranged in order on the x-axis. The blue ribbon shows the 95% confidence intervals. All results are adjusted for maternal BMI.

Regions identified by Donkin et al.

Donkin et al. (18) reported 9,081 genes differentially methylated between sperm samples from lean and obese men (with FDR-adjusted $P < 0.1$). Of these, we could only map to 511 CpGs at the same genomic positions in our cord blood EWAS meta-analysis results, because Donkin et al. measured methylation using reduced representation bisulfite sequencing (RRBS) with a higher coverage of the genome than the 450k array. In our paternal BMI EWAS meta-analysis at birth (adjusted for maternal BMI), we found the same direction of effect at only roughly half of these genes (252/511), and only 17 of these had a P -value < 0.05 , with none surviving FDR correction for multiple testing at either 511 or 252 sites. QQ plots and a Kolmogorov-Smirnov test suggested that our EWAS P -values at these 252 sites were not smaller than would be expected by chance (Supporting Information File S12; Kolmogorov-

Smirnov $P = 0.27$). Findings were similar when using the EWAS meta-analysis P -values from the paternal BMI model that was not adjusted for maternal BMI (Supporting Information File S12).

CpGs identified by Noor et al.

In Project Viva (a cohort that also contributed results to our meta-analysis), Noor et al. identified nine CpGs where cord blood methylation was associated with periconceptional paternal BMI after adjustment for maternal BMI (20). In our results at birth, we found the same direction of estimated effect at 7/9 CpGs. Only one of these had a P -value < 0.05 , but this association also survived FDR correction for multiple testing at nine sites (cg04763273 mapping to *TFAP2C*; -0.41% difference in methylation per 1SD increase in paternal BMI; 95% CI -0.67 to -0.15; $P = 0.002$). According to our leave-one-out analysis criteria, this CpG “survived” after omission of Project Viva, but it did not survive after omission of Generation R. A Kolmogorov-Smirnov test suggested that our EWAS P -values at the nine CpGs identified by Noor et al. were not smaller than would be expected by chance (Kolmogorov-Smirnov $P = 0.21$). Noor et al. also identified 18 CpGs where cord blood methylation was associated with paternal BMI when the analysis was restricted to a subset of offspring of mothers with a BMI > 25 . In our (unstratified) results at birth we found the same direction of estimated effect at only nine of these 18 CpGs, only one had a P -value < 0.05 (cg04763273) and a Kolmogorov-Smirnov test suggested our EWAS P -values were not smaller than would be expected by chance (Kolmogorov-Smirnov $P = 0.54$).

Discussion

Summary and interpretation of findings

In coordinated EWAS meta-analysis using a total of 19 datasets, at a genome-wide level of significance (FDR-adjusted $P < 0.05$) we found little evidence of association between prenatal paternal BMI and offspring blood DNA methylation at birth or in childhood. In sex-stratified analyses, we found robust associations between paternal BMI and cord blood methylation at just four CpGs in female offspring only. There was little evidence of residual confounding by maternal BMI, and paternal BMI was not strongly associated with estimated cell heterogeneity at either timepoint. At the top CpGs most strongly associated with paternal BMI, estimates of the effect of paternal BMI on methylation were larger than estimates of the effect of maternal BMI, suggesting some evidence of paternal-specific effects at these top CpGs. However, more associations with maternal BMI than paternal BMI surpassed our P -value threshold (FDR-adjusted $P < 0.05$), and across the whole genome estimates of the effect of paternal BMI were similar in magnitude to those of maternal BMI.

The lack of evidence for large numbers of associations with low P -values is partly influenced by limited power and we cannot discount an impact of paternal BMI on offspring DNA methylation without larger numbers and/or studies in populations with greater variability in paternal BMI. Furthermore, we cannot rule out an impact on DNA methylation measured in different tissues and/or at regions not covered by the 450k array.

Comparison to the literature

Our null findings are in contrast to some previous findings. In a systematic review, we identified seven studies that have previously reported on associations between paternal BMI and sperm or offspring methylation in humans. Five of these (three from one study and group(14–16) and two from another (17,19)) were candidate gene studies that found associations between paternal obesity or higher BMI and sperm or offspring cord blood methylation at imprinted regions (all after adjustment for maternal BMI or obesity). There is a strong biological rationale to studying imprinted regions in the context of paternal exposures, because methylation marks at imprinted regions appear to survive the wave of demethylation that occurs following fertilization, and therefore have the potential to pass on epigenetic information from the gametes to the offspring(10,59). However, where studies of imprinted genes have considered the same loci, the direction of estimated effects have been discordant between studies. For example, Potabattula et al.(17) found a positive correlation between paternal BMI and cord blood methylation at *MEST*, but Soubry et al.(14) found that cord blood of offspring of obese fathers was lower than that of controls, indicating a negative correlation with BMI. There are also paradoxical findings at *SGCE/PEG10* and *IGF2* between studies of sperm(16) and cord blood(14), but if methylation differences in sperm are transmitted to offspring, we would expect the same direction of estimated effects in these tissues. In our EWAS meta-analysis of paternal BMI, we found little evidence of enrichment for imprinted genes. Effect estimates at individual CpGs within imprinted regions were small

and the direction of effect varied within most genes (Figure 4). Therefore, we found little evidence to support the findings of these candidate gene studies, despite having a much larger sample size and statistical power. However, it should be noted that the Illumina BeadChip array does not provide full coverage of imprinted regions, so further, more detailed analysis of these regions may be justified.

One small study (total n=23; 10 obese) by Donkin et al.(18), used an untargeted genome-wide approach that identified over 9,000 CpGs throughout the genome differentially methylated in the sperm of obese versus lean men. Only 511 of these CpGs were available in our meta-analysis, but we found little evidence of association at these. The difference in findings of the two studies could reflect a number of factors, including differences in the studied tissue (sperm vs offspring blood), technology (RRBS versus 450k), definition of phenotype (i.e. obese/lean versus BMI over the whole range), or study sample (e.g. all the obese men in Donkin et al. were glucose intolerant).

Finally, in our meta-analysis we replicated the direction of effect at seven out of nine CpGs identified in Noor et al.'s study of periconceptional paternal BMI and cord blood DNA methylation in Project Viva (20). One of these CpGs (cg04763273 near *TFAP2C*) appeared robustly associated with paternal BMI, but we found limited evidence to support their other findings. Our study designs were similar in that we used the same Illumina array, exposure definition, offspring tissue and timepoint, and even had some sample overlap (Project Viva contributed results to our meta-analysis). However, there were some differences in the model and our sample size was over 11 times larger and therefore more robust to identifying false positives.

Strengths

Analyses were conducted according to a pre-specified, harmonised analysis plan, which is publicly available to aid reproducibility. All the code used to conduct these analyses, and all the resulting EWAS meta-analysis summary statistics, are publicly available on our Open Science Framework site at doi:10.17605/OSF.IO/EBTW7. This means that new studies with relevant data could undertake identical analyses and meta-analyse with our results to produce more precise estimates.

Our study uses a sample size of 4,894, which is >11-fold larger than all the independent studies identified in our systematic review (Table 7), the largest of which has a sample size of 429. It draws together rich data from multiple birth cohorts internationally and this richness allowed us to adjust for important potential confounders. We also attempted to adjust for systematic variation in the DNA methylation data by generating and adjusting for surrogate variables, which is an approach that has been shown to reduce the risk of false positives(44). In a further attempt to ensure the robustness of our results, we conducted sensitivity analyses (leave-one-out at top sites, excluding cohorts with only maternal-reported paternal BMI, excluding HELIX from the genome-wide meta-analysis, and meta-regression of age).

Our rich data enabled us to conduct a series of novel analyses. Firstly, we explored associations between paternal prenatal BMI and offspring DNA methylation at childhood, which allows exploration of the persistence of associations from birth, and/or the effect of paternal BMI postnatally (which we would expect to be correlated with prenatal paternal BMI). Secondly, we explored associations between paternal BMI and cellular heterogeneity, which is an important source of variation in methylation data, but also an interesting phenotype to study in its own right (54). Thirdly, we have previously shown that maternal BMI is associated with offspring methylation, which may reflect a causal intrauterine effect at some CpGs (26). Therefore, to help us tease apart paternal from maternal effects, we compared paternal models adjusted and unadjusted for maternal BMI and we also studied maternal BMI as the main exposure. A particular advantage here was that we included the same samples in both analyses and adjusted for the same covariates, so the sample sizes were the same and the main exposure (paternal or maternal BMI) was the only difference between models. We calculated the correlation between maternal and paternal BMI in each cohort which provided modest support for assortative mating, but by comparing paternal and maternal effect estimates and assessing enrichment of our paternal results for the CpGs we previously identified as associated with maternal BMI (26), we were able to infer that maternal BMI was not an important confounder driving associations between paternal BMI and offspring methylation.

Limitations

There are a number of limitations that should be considered when interpreting our results. Firstly, the 450k array covers only 1.7% of CpGs on the genome, therefore regions (including imprinted regions) that might be differentially methylated in association with paternal BMI might be missed. Secondly, BMI could be a poor measure of paternal adiposity in our sample, partly due to general issues with the use of BMI as a measure of adiposity(60,61) (perhaps particularly in men) and partly due to measurement error introduced by self- or partner-report. One study showed that lean mass explained more variability in men's BMI than body fat did, whereas the opposite was seen in women(60). Measurement error might be higher for paternal BMI than maternal BMI because few cohorts had direct measurements and in some instances BMI was reported for the father by the mother, introducing additional measurement error to the questionnaire reported variable (however, we found similar results in our EWAS meta-analysis when we excluded cohorts that used maternal-report to define paternal BMI). More variation in offspring methylation might be captured by another measure such as fat mass percentage or a measure of "lipotoxicity" (61), but these data were not available. Thirdly, offspring blood might not be the most suitable tissue to study and effects might be seen in other tissues such as adipose (given previous evidence of associations between paternal and offspring adiposity), but again, we were limited by data availability. Fourthly, the range of paternal BMI in our study sample could be insufficient to show an effect. As with associations between maternal BMI and offspring adiposity (62), there might be a J- or U-shaped relationship between paternal BMI and offspring outcomes, whereby strong associations are only seen at the extremes of the distribution. We anticipated that we would not have enough power to dichotomise into (extreme) obese and lean groups, therefore we were limited to only studying paternal BMI across the whole range as a continuous variable. Indeed, in our birth analysis, only 10% of fathers across all cohorts were obese (Table 2; Supporting Information File 3), which is the same as a recent estimate of the worldwide prevalence of obesity in men, but much lower than the estimated prevalence of obesity in adults living in Europe (23%) and America (28%)(63), where most of our sample reside. This relatively low occurrence of paternal obesity (and therefore variability in BMI) in our sample may partly explain why we did not find stronger evidence of association with our outcome. Finally, paternal data, including paternal BMI, from birth cohort studies is potentially more at risk of bias than maternal data. Lower prioritisation and greater difficulties recruiting fathers can introduce a higher degree of missing data for fathers compared to mothers. If paternal participation is related to BMI, this could create a selection bias in our sample. Additionally, non-paternity (i.e. partners not being genetically related to their offspring) might also introduce bias if it is related to paternal BMI. Both of these issues could bias paternal estimates towards the null and therefore could be a plausible non-biological reason for our observation of more FDR<0.05 associations between offspring methylation and maternal than paternal BMI.

Suggestions for further research

Paternal effects on offspring health have been observed, so there is a logical motivation to further investigate the potential underlying molecular mechanisms. As mentioned above, in studies of the effect of paternal adiposity, this work could focus on extreme ends of the BMI distribution and/or other more informative measures of adiposity such as fat mass index, waist-circumference or measures of lipotoxicity (61). There is also huge scope to study the effects of other paternal characteristics, such as health behaviours like smoking and alcohol consumption. Evidence from animal studies suggests that other epigenetic mechanisms such as long non-coding RNAs or tRNAs could be more likely intergenerational carriers of paternal information than DNA methylation and it would be useful to extend these investigations to humans.

Conclusion

In this large EWAS meta-analysis, we found little evidence of association between paternal pre-pregnancy BMI and offspring DNA methylation in blood, including at imprinted genes. However, this does not rule out the possibility of a paternal epigenetic effect in different tissues or via different mechanisms. More research is warranted to gain a greater understanding of the size and nature of contributions of paternal adiposity to offspring outcomes more broadly.

Acknowledgments

Acknowledgments and funding for each cohort and research group are listed in Supporting Information File S1.

References

1. Braun JM, Messerlian C, Hauser R. Fathers Matter: Why It's Time to Consider the Impact of Paternal Environmental Exposures on Children's Health. *Curr Epidemiol Reports*. 2017 Mar 11;4(1):46–55.
2. Fleming TP, Watkins AJ, Velazquez MA, Mathers JC, Prentice AM, Stephenson J, et al. Origins of lifetime health around the time of conception: causes and consequences. *Lancet*. 2018 May 5;391(10132):1842–52.
3. Sharp GC, Lawlor DA. Paternal impact on the life-course development of obesity and type 2 diabetes in the offspring. *Diabetologia*. 2019;
4. Crean AJ, Bonduriansky R. What is a paternal effect? *Trends Ecol Evol*. 2014 Oct;29(10):554–9.
5. Rando OJ. Daddy issues: paternal effects on phenotype. *Cell*. 2012 Nov 9;151(4):702–8.
6. Acuna-Hidalgo R, Veltman JA, Hoischen A. New insights into the generation and role of de novo mutations in health and disease. *Genome Biol*. 2016 Dec 28;17(1):241.
7. Day J, Savani S, Krempel BD, Nguyen M, Kitlinska JB. Influence of paternal preconception exposures on their offspring: through epigenetics to phenotype. *Am J Stem Cells*. 2016 May;5(1):11–8.
8. Kumar M, Kumar K, Jain S, Hassan T, Dada R. Novel insights into the genetic and epigenetic paternal contribution to the human embryo. *Clinics (Sao Paulo)*. 2013;68 Suppl 1(Suppl 1):5–14.
9. Hammoud SS, Nix DA, Zhang H, Purwar J, Carrell DT, Cairns BR. Distinctive chromatin in human sperm packages genes for embryo development. *Nature*. 2009 Jul 14;460(7254):473–8.
10. Seisenberger S, Peat JR, Hore TA, Santos F, Dean W, Reik W. Reprogramming DNA methylation in the mammalian life cycle: building and breaking epigenetic barriers. *Philos Trans R Soc B Biol Sci*. 2012 Nov 19;368(1609):20110330–20110330.
11. Mitchell M, Bakos HW, Lane M. Paternal diet-induced obesity impairs embryo development and implantation in the mouse. *Fertil Steril*. 2011 Mar 15;95(4):1349–53.
12. Ng S-F, Lin RCY, Laybutt DR, Barres R, Owens JA, Morris MJ. Chronic high-fat diet in fathers programs β -cell dysfunction in female rat offspring. *Nature*. 2010 Oct 21;467(7318):963–6.
13. Oldereid NB, Wennerholm U-B, Pinborg A, Loft A, Laivuori H, Petzold M, et al. The effect of paternal factors on perinatal and paediatric outcomes: a systematic review and meta-analysis. *Hum Reprod Update*. 2018 May 1;24(3):320–89.
14. Soubry A, Schildkraut JM, Murtha A, Wang F, Huang Z, Bernal A, et al. Paternal obesity is associated with IGF2 hypomethylation in newborns: results from a Newborn Epigenetics Study (NEST) cohort. *BMC Med*. 2013 Feb 6;11:29.
15. Soubry A, Murphy SK, Wang F, Huang Z, Vidal AC, Fuemmeler BF, et al. Newborns of obese parents have altered DNA methylation patterns at imprinted genes. *Int J Obes (Lond)*. 2015 Apr 25;39(4):650–7.
16. Soubry A, Guo L, Huang Z, Hoyo C, Romanus S, Price T, et al. Obesity-related DNA methylation at imprinted genes in human sperm: Results from the TIEGER study. *Clin Epigenetics*. 2016 Dec 6;8(1):51.
17. Potabattula R, Dittrich M, Böck J, Haertle L, Müller T, Hahn T, et al. Allele-specific methylation of imprinted genes in fetal cord blood is influenced by cis-acting genetic variants and parental factors. *Epigenomics*. 2018 Oct;10(10):1315–26.
18. Donkin I, Versteyhe S, Ingerslev LR, Qian K, Mehta M, Nordkap L, et al. Obesity and Bariatric Surgery Drive Epigenetic Variation of Spermatozoa in Humans. *Cell Metab*. 2016 Feb 9;23(2):369–78.
19. Potabattula R, Dittrich M, Schorsch M, Hahn T, Haaf T, El Hajj N. Male obesity effects on sperm and next-generation cord blood DNA methylation. *PLoS One*. 2019;14(6):e0218615.
20. Noor N, Cardenas A, Rifas-Shiman S, Pan H, Dreyfuss J, Oken E, et al. Association of periconception paternal body mass index with persistent changes in DNA methylation of offspring in childhood. *JAMA Netw Open*. 2019;2(12).

21. Felix JF, Joubert BR, Baccarelli AA, Sharp GC, Almqvist C, Annesi-Maesano I, et al. Cohort Profile: Pregnancy And Childhood Epigenetics (PACE) Consortium. *Int J Epidemiol*. 2018 Sep 1;47(1):22-23u.
22. Lawlor DA, Mishra GD. Family matters: Designing, analysing and understanding family based studies in life course epidemiology. *Family matters: Designing, analysing and understanding family based studies in life course epidemiology*. 2009. 1–352 p.
23. Sharp GC, Lawlor DA, Richmond RC, Fraser A, Simpkin A, Suderman M, et al. Maternal pre-pregnancy BMI and gestational weight gain, offspring DNA methylation and later offspring adiposity: findings from the Avon Longitudinal Study of Parents and Children. *Int J Epidemiol*. 2015 Apr 8;
24. Gemma C, Sookoian S, Alvariñas J, García SI, Quintana L, Kanevsky D, et al. Maternal pregestational BMI is associated with methylation of the PPARGC1A promoter in newborns. *Obesity (Silver Spring)*. 2009 May;17(5):1032–9.
25. Morales E, Groom A, Lawlor DA, Relton CL. DNA methylation signatures in cord blood associated with maternal gestational weight gain: results from the ALSPAC cohort. *BMC Res Notes*. 2014 May 2;7(1):278.
26. Sharp GC, Salas LA, Monnereau C, Allard C, Yousefi P, Everson TM, et al. Maternal BMI at the start of pregnancy and offspring epigenome-wide DNA methylation: Findings from the pregnancy and childhood epigenetics (PACE) consortium. *Hum Mol Genet*. 2017;26(20).
27. Fraser A, Macdonald-Wallis C, Tilling K, Boyd A, Golding J, Davey Smith G, et al. Cohort Profile: the Avon Longitudinal Study of Parents and Children: ALSPAC mothers cohort. *Int J Epidemiol*. 2013 Feb;42(1):97–110.
28. Boyd A, Golding J, Macleod J, Lawlor DA, Fraser A, Henderson J, et al. Cohort Profile: the 'children of the 90s'--the index offspring of the Avon Longitudinal Study of Parents and Children. *Int J Epidemiol*. 2013 Feb;42(1):111–27.
29. Relton CL, Gaunt T, McArdle W, Ho K, Duggirala A, Shihab H, et al. Data Resource Profile: Accessible Resource for Integrated Epigenomic Studies (ARIES). *Int J Epidemiol*. 2015 May 19;1–10.
30. Wright J, Small N, Raynor P, Tuffnell D, Bhopal R, Cameron N, et al. Cohort Profile: The Born in Bradford multi-ethnic family cohort study. *Int J Epidemiol*. 2013 Aug 1;42(4):978–91.
31. Eskenazi B, Bradman A, Gladstone E a., Jaramillo S, Birch K, Holland N. CHAMACOS, A Longitudinal Birth Cohort Study: Lessons from the Fields. *J Child Heal*. 2003;1(1):3–27.
32. Jaddoe VW V, Mackenbach JP, Moll HA, Steegers EAP, Tiemeier H, Verhulst FC, et al. The Generation R Study: Design and cohort profile. *Eur J Epidemiol*. 2006 Jan;21(6):475–84.
33. Kooijman MN, Kruithof CJ, van Duijn CM, Duijts L, Franco OH, van IJzendoorn MH, et al. The Generation R Study: design and cohort update 2017. *Eur J Epidemiol*. 2016 Dec;31(12):1243–64.
34. Paternoster L, Evans DM, Nohr EA, Holst C, Gaborieau V, Brennan P, et al. Genome-wide population-based association study of extremely overweight young adults--the GOYA study. *PLoS One*. 2011 Jan 15;6(9):e24303.
35. Guxens M, Ballester F, Espada M, Fernández MF, Grimalt JO, Ibarluzea J, et al. Cohort Profile: the INMA--INfancia y Medio Ambiente--(Environment and Childhood) Project. *Int J Epidemiol*. 2012 Aug;41(4):930–40.
36. Magnus P, Irgens LM, Haug K, Nystad W, Skjaerven R, Stoltenberg C, et al. Cohort profile: the Norwegian Mother and Child Cohort Study (MoBa). *Int J Epidemiol*. 2006 Oct;35(5):1146–50.
37. Magnus P, Birke C, Vejrup K, Haugan A, Alsaker E, Daltveit AK, et al. Cohort Profile Update: The Norwegian Mother and Child Cohort Study (MoBa). *Int J Epidemiol*. 2016 Apr;45(2):382–8.
38. Oken E, Baccarelli AA, Gold DR, Kleinman KP, Litonjua AA, De Meo D, et al. Cohort profile: project viva. *Int J Epidemiol*. 2015 Feb 1;44(1):37–48.
39. Vineis P, Chadeau-Hyam M, Gmuender H, Gulliver J, Herceg Z, Kleinjans J, et al. The exposome in practice: Design of the EXPOSOMICS project. *Int J Hyg Environ Health*. 2017;
40. Farchi S, Forastiere F, Vecchi Brumatti L, Alvitani S, Arnoffi A, Bernardini T, et al. Piccolipiù, a multicenter birth

- cohort in Italy: protocol of the study. *BMC Pediatr*. 2014 Feb 7;14:36.
41. Chatzi L, Leventakou V, Vafeiadi M, Koutra K, Roumeliotaki T, Chalkiadaki G, et al. Cohort Profile: The Mother-Child Cohort in Crete, Greece (Rhea Study). *Int J Epidemiol*. 2017 Oct 1;46(5):1392-1393k.
 42. Maitre L, de Bont J, Casas M, Robinson O, Aasvang GM, Agier L, et al. Human Early Life Exposome (HELIX) study: a European population-based exposome cohort. *BMJ Open*. 2018 Sep 10;8(9):e021311.
 43. Heude B, Forhan A, Slama R, Douhaud L, Bedel S, Saurel-Cubizolles M-J, et al. Cohort Profile: The EDEN mother-child cohort on the prenatal and early postnatal determinants of child health and development. *Int J Epidemiol*. 2016 Apr;45(2):353-63.
 44. Leek JT, Storey JD. Capturing heterogeneity in gene expression studies by surrogate variable analysis. *PLoS Genet*. 2007 Sep;3(9):1724-35.
 45. Leek JT, Johnson WE, Parker HS, Jaffe AE, Storey JD. The sva package for removing batch effects and other unwanted variation in high-throughput experiments. *Bioinformatics*. 2012 Mar 15;28(6):882-3.
 46. Houseman EA, Accomando WP, Koestler DC, Christensen BC, Marsit CJ, Nelson HH, et al. DNA methylation arrays as surrogate measures of cell mixture distribution. *BMC Bioinformatics*. 2012 Jan;13(1):86.
 47. Bakulski KM, Feinberg JI, Andrews S V., Yang J, Brown S, L. McKenney S, et al. DNA methylation of cord blood cell types: Applications for mixed cell birth studies. *Epigenetics*. 2016 May 3;11(5):354-62.
 48. Reinius LE, Acevedo N, Joerink M, Pershagen G, Dahlén SE, Greco D, et al. Differential DNA methylation in purified human blood cells: Implications for cell lineage and studies on disease susceptibility. *PLoS One*. 2012;7(7).
 49. Sharp GC, Arathimos R, Reese SE, Page CM, Felix J, Küpers LK, et al. Maternal alcohol consumption and offspring DNA methylation: findings from six general population-based birth cohorts. *Epigenomics*. 2018 Jan;10(1):27-42.
 50. Smyth GK. Limma: linear models for microarray data. In: Gentleman R, Carey V, S D, Irizarry W, editors. *Bioinformatics and Computational Biology Solutions using R and Bioconductor*. New York: Springer; 2005. p. 397-420.
 51. Suderman M, Simpkin A, Sharp GC, Gaunt T, Lyttleton O, McArdle W, et al. Sex-associated autosomal DNA methylation differences are wide-spread and stable throughout childhood. *bioRxiv*. 2017 Mar 19;118265.
 52. Perez-Pastor EM, Metcalf BS, Hosking J, Jeffery AN, Voss LD, Wilkin TJ. Assortative weight gain in mother-daughter and father-son pairs: an emerging source of childhood obesity. *Longitudinal study of trios (EarlyBird 43)*. *Int J Obes*. 2009 Jul 12;33(7):727-35.
 53. Chen Y-P, Xiao X-M, Li J, Reichetzeder C, Wang Z-N, Hoche B. Paternal Body Mass Index (BMI) Is Associated with Offspring Intrauterine Growth in a Gender Dependent Manner. Sun Q, editor. *PLoS One*. 2012 May 3;7(5):e36329.
 54. Lappalainen T, Greally JM. Associating cellular epigenetic models with human phenotypes. *Nat Rev Genet*. 2017 May 30;18(7):441-51.
 55. Viechtbauer W. Conducting Meta-Analyses in R with the metafor Package. *J Stat Softw*. 2010;36(3):1-48.
 56. Willer CJ, Li Y, Abecasis GR. METAL: fast and efficient meta-analysis of genomewide association scans. *Bioinformatics*. 2010 Sep 1;26(17):2190-1.
 57. Chen Y, Lemire M, Choufani S, Butcher DT, Grafodatskaya D, Zanke BW, et al. Discovery of cross-reactive probes and polymorphic CpGs in the Illumina Infinium HumanMethylation450 microarray. *Epigenetics*. 2013 Feb;8(2):203-9.
 58. Kovalchik S. RISmed: Download content from NCBI Databases. 2017.
 59. Tang W, Ho S. Epigenetic reprogramming and imprinting in origins of disease. *Rev Endocr Metab Disord*. 2007 Jun;8(2):173-82.

60. Romero-Corral A, Somers VK, Sierra-Johnson J, Thomas RJ, Collazo-Clavell ML, Korinek J, et al. Accuracy of body mass index in diagnosing obesity in the adult general population. *Int J Obes*. 2008 Jun 19;32(6):959–66.
61. Sørensen TIA, Virtue S, Vidal-Puig A. Obesity as a clinical and public health problem: Is there a need for a new definition based on lipotoxicity effects? *Biochim Biophys Acta - Mol Cell Biol Lipids*. 2010 Mar;1801(3):400–4.
62. Lawlor DA, Relton C, Sattar N, Nelson SM. Maternal adiposity--a determinant of perinatal and offspring outcomes? *Nat Rev Endocrinol*. 2012 Nov 25;8(11):679–88.
63. Chooi YC, Ding C, Magkos F. The epidemiology of obesity. *Metabolism*. 2019 Mar 1;92:6–10.

Supporting Information

File S1) Cohort-specific methods, funding and acknowledgements

File S2) Literature review search strategy

File S3) Summary of cohort variables

File S4) Quality checks of cohort-specific EWAS results at birth

File S5) Quality checks of meta-analysis EWAS results at birth

File S6) Results of sensitivity analyses at birth

Files S7) Comparison of paternal and maternal BMI EWAS results after adjustment for maternal BMI

File S8) Quality checks of cohort-specific EWAS results at childhood

File S9) Quality checks of meta-analysis EWAS results at childhood

File S10) Results of sensitivity analyses at childhood

File S11) Results of the meta-analysis of paternal BMI in relation to cellular heterogeneity

File S12) Additional results of the comparison to the literature

Author affiliations:

1. MRC Integrative Epidemiology Unit, Population Health Sciences, Bristol Medical School, University of Bristol, UK, BS8 2BN
2. Centre for Environmental Sciences, Hasselt University, Diepenbeek, Belgium
3. MRC Centre for Environment and Health School of Public Health Imperial College London, St Mary's Campus, Norfolk Place, London, UK
4. Epigenetics Group, International Agency for Research on Cancer, Lyon, France
5. ISGlobal, Barcelona, Spain
6. Universitat Pompeu Fabra (UPF), Barcelona, Spain
7. Department of Population Medicine, Harvard Medical School, Harvard Pilgrim Health Care Institute, Boston, MA, USA
8. Centre for Fertility and Health, Norwegian Institute of Public Health, Norway
9. Oslo Centre for Biostatistics and Epidemiology, Oslo University Hospital, Oslo, Norway
10. Westat, Inc, Durham NC USA
11. CIBER Epidemiología y Salud Pública (CIBERESP), Madrid, Spain
12. Bradford Institute for Health Research, Temple Bank House, Bradford Royal Infirmary, Bradford BD9 6RJ, UK
13. Children's Environmental Health Laboratory, Division of Environmental Health Sciences, School of Public Health, University of California, Berkeley, CA, USA
14. Generation R Study Group, Erasmus MC, University Medical Center Rotterdam, Rotterdam, the Netherlands
15. Department of Pediatrics, Erasmus MC, University Medical Center Rotterdam, Rotterdam, the Netherlands
16. Division of Network Medicine, Department of Medicine, Brigham and Women's Hospital, Harvard Medical School, Boston, MA, USA
17. Division of Pulmonary and Critical Care Medicine, Department of Medicine, Brigham and Women's Hospital, Harvard Medical School, Boston, MA, USA
18. Children's Environmental Health Laboratory, Division of Environmental Health Sciences, School of Public Health, University of California, Berkeley, CA, USA
19. Cancer Epidemiology Unit, Department of Medical Sciences, University of Turin, Turin, Italy
20. Institute of Clinical Research, University of Southern Denmark, Odense, Denmark
21. Centre of Women's, Family and Child health, University of South-Eastern Norway, Kongsberg, Norway
22. Univ. Grenoble Alpes, Inserm, CNRS, Team of Environmental Epidemiology Applied to Reproduction and Respiratory Health, IAB, 38000 Grenoble, France
23. Laboratory of Precision Environmental Biosciences, Columbia University Mailman School of Public Health, New York, NY, USA
24. Department of Chronic Diseases and Ageing, Division of Mental and Physical Health, Norwegian Institute of Public Health, Oslo, Norway
25. Department of Social Medicine, Faculty of Medicine, University of Crete, Heraklion, Greece
26. Pediatric Department of Hematology and Oncology, Oslo University Hospital, Norway
27. Norwegian Institute of Public Health, Norway
28. Center for Environmental Research and Children's Health (CERCH), School of Public Health, University of California, Berkeley, CA, USA
29. Clinical Epidemiology and Public Health Research Unit, Institute for Maternal and Child Health, IRCCS Burlo Garofolo, Italy
30. Department of Preventive Medicine, University of Southern California, Los Angeles, California 90007, United States
31. Diabetes Unit, Massachusetts General Hospital, Boston, MA, USA
32. National Institute for Health Research Bristol Biomedical Research Centre, Bristol, UK
33. Novo Nordisk Foundation Center for Basic Metabolic Research, Faculty of Medical and Health Sciences, University of Copenhagen, Copenhagen, Denmark, DK2200N
34. Department of Public Health, Section of Epidemiology, Faculty of Medical and Health Sciences, University of Copenhagen, Copenhagen, Denmark, DK2200N
35. National Institute of Environmental Health Sciences, National Institutes of Health, Department of Health and Human Services, Research Triangle Park, NC, USA