

1 **Polygenic modulation of lipoprotein(a)-associated cardiovascular risk.**

2
3 **Brief title:** Lipoprotein(a)-associated cardiovascular risk.

4
5 Mark Trinder^{a,b}, MSc, Liam R. Brunham^{a,b,c,d}, MD, PhD.

6
7 ^a Centre for Heart Lung Innovation, University of British Columbia, Vancouver, BC, Canada.

8 ^b Experimental Medicine Program, University of British Columbia, Vancouver, British
9 Columbia, Canada

10 ^c Department of Medicine, University of British Columbia, Vancouver, British Columbia,
11 Canada

12 ^d Department of Medical Genetics, University of British Columbia, Vancouver, British
13 Columbia, Canada

14
15 **Funding:** This project was supported by the Providence Health Care Research Institute. M.T. is
16 supported by a Vanier Canada Graduate Scholarship. L.R.B. is supported by a Michael Smith
17 Foundation for Health Research Scholar Award and is a Canada Research Chair in Precision
18 Cardiovascular Disease Prevention.

19
20 **Disclosures:** None.

21
22 *** Address for correspondence:**

23 Dr. Liam R. Brunham
24 Centre for Heart Lung Innovation
25 Room 166-1081 Burrard Street
26 Vancouver, BC V6Z 1Y6
27 Phone: (604) 682-2344 x63929
28 Fax: (604) 806-9274
29 Email: liam.brunham@ubc.ca
30 Twitter handle: @LiamBrunham

31 **ABSTRACT**

32 **Aims:** Elevated levels of lipoprotein(a) are one of the strongest inherited risk factors for
33 coronary artery disease (CAD). However, there is variability in cardiovascular risk among
34 individuals with elevated lipoprotein(a). The sources of this variability are incompletely
35 understood. We assessed the effects of a genomic risk score (GRS) for CAD on risk of
36 myocardial infarction among individuals with elevated lipoprotein(a).

37 **Methods:** We calculated CAD GRSs for 408,896 individuals of British white ancestry from
38 the UK Biobank using 6.27 million common genetic variants. Lipoprotein(a) levels were
39 measured in 310,020 individuals. The prevalence and risk of myocardial infarction versus
40 CAD GRS percentiles were compared for individuals with and without elevated lipoprotein(a)
41 defined as ≥ 120 or 168 nmol/L (≈ 50 or 70 mg/dL, respectively).

42 **Results:** Individuals with elevated lipoprotein(a) displayed significantly greater CAD GRSs
43 than individuals without elevated lipoprotein(a), which was largely dependent on the
44 influence of genetic variants within or near the *LPA* gene. Continuous levels of CAD GRS
45 percentile were significantly associated with risk of myocardial infarction for individuals with
46 elevated lipoprotein(a). Notably, the risk of myocardial infarction for males with elevated
47 lipoprotein(a) levels, but a CAD GRS percentile in the lower quintile ($< 20^{\text{th}}$ percentile), was less
48 than the overall risk of myocardial infarction for males with non-elevated lipoprotein(a) levels
49 (hazard ratio [95% CI]: 0.79 [0.64 - 0.97], $p=0.02$). Similar results were observed for females.

50 **Conclusion:** These data suggest that CAD genomic scores influence cardiovascular risk among
51 individuals with elevated lipoprotein(a) and may aid in identifying candidates for preventive
52 therapies.

- 53 **Keywords:** Lp(a), genomic risk score, myocardial infarction, genetic risk, atherosclerosis,
- 54 polygenic

55 INTRODUCTION

56 Lipoprotein(a) is a plasma lipoprotein composed of a low-density lipoprotein particle that
57 is covalently linked to apolipoprotein(a) by a disulfide bond. Lipoprotein(a) levels are among the
58 strongest inherited risk factors for cardiovascular disease¹⁻⁹, and Mendelian randomization
59 studies suggest that elevated levels of lipoprotein(a) are causal for aortic stenosis¹⁰, heart
60 failure¹¹, ischemic stroke¹², and coronary artery disease (CAD)^{1,13}. Plasma levels of
61 lipoprotein(a) are largely determined by genetic factors which include single-nucleotide variants
62 and copy number variants in the kringle IV type 2 (KIV-2) domain of the *LPA* gene^{5,6,14,15}.

63 Elevated lipoprotein(a) is a common condition that is estimated to affect 1 in 5
64 individuals of European ancestry (plasma lipoprotein(a) levels greater than 50 mg/dL)¹⁶.
65 Although elevated lipoprotein(a) is associated with increased cardiovascular risk, the optimal
66 treatment of elevated lipoprotein(a) is uncertain. While there are currently no approved therapies
67 for lowering lipoprotein(a), antisense oligonucleotides that target apolipoprotein(a) and reduce
68 lipoprotein(a) levels by up to 80% have been developed and are currently being studied in
69 clinical trials¹⁷⁻¹⁹. At the individual level, there is substantial variability in cardiovascular risk
70 among individuals with elevated lipoprotein(a)^{1,20,21}, and it remains unclear whether isolated
71 elevated lipoprotein(a) in the absence of other cardiovascular risk factors merits treatment to
72 reduce cardiovascular risk .

73 Recent work suggests that genomic risk scores (GRSs), which summarize the association
74 of millions of common genetic variants with risk of CAD into a single value, may be a useful
75 tool for improving risk prediction of CAD^{7,22-25}. Here we tested the hypothesis that, among
76 individuals with elevated lipoprotein(a), the risk of CAD would be modulated by a GRS for
77 CAD, and that this may be useful for risk stratification.

78

79 **METHODS**

80 ***Study population.***

81 We studied participants from the UK Biobank, a large population-based prospective
82 cohort study from the United Kingdom that aims to improve the prevention, diagnosis and
83 treatment of disease by following the health and well-being of approximately 500 000
84 individuals. Individuals were enrolled between 2006-2010 and were between 40-69 years-of-age.
85 Individuals underwent deep phenotyping at study enrollment and DNA was collecting for
86 genotyping, as previously described²⁶. The UK Biobank resource was approved by the UK
87 Biobank Research Ethics Committee, and all participants provided written informed consent to
88 participate in the study. This study was approved by the UK Biobank (application ID: 42857)
89 and by the Clinical Research Ethics Board of the University of British Columbia (H18-02181).

90 ***Biochemical measurements.***

91 Biochemical measurements were assessed at the time of study enrollment (Supplemental
92 Methods; Supplemental Table 1). Lipoprotein(a) was measured using an immuno-turbidimetric
93 method on the Beckman Coulter AU5800 platform (Randox Bioscience, UK), which is
94 essentially isoform insensitive²⁷. Where indicated, lipoprotein(a) concentration was converted
95 from nmol/L to mg/dL by dividing values by 2.4^{3,28}. Elevated lipoprotein(a) was defined as
96 lipoprotein(a) levels ≥ 120 nmol/L (≈ 50 mg/dL) or ≥ 168 nmol/L (≈ 70 mg/dL)^{27,29,30}. For
97 individuals taking cholesterol-lowering medication, total cholesterol and low-density lipoprotein
98 cholesterol levels were adjusted by multiplying on-treatment lipid levels by 1.43, corresponding
99 to an estimated 30% reduction in low-density lipoprotein cholesterol^{31,32}.

100 ***Calculation of coronary artery disease genomic risk scores.***

101 The weightings used to calculate CAD GRSs were obtained from the Cardiovascular
102 Disease Initiative Knowledge Portal and can be accessed at www.broadcvdi.org^{7,22}. CAD GRSs
103 were calculated for individuals of British white ancestry using imputed genetic data that were not
104 flagged as outliers for excess missingness or heterozygosity²⁶. CAD GRSs were calculated using
105 6.27 million of the 6.63 million potential single-nucleotide variants described by Khera et al.
106 (2018). Variants that displayed deviation from Hardy-Weinberg equilibrium ($p < 1 \times 10^{-6}$), a
107 genotyping rate $< 95\%$, or minor allele frequency $< 1\%$ were removed. The PLINK score function
108 was used to multiply the number of alleles associated with adjusted β -coefficient for increased
109 risk of CAD at each single-nucleotide variant by its respective linkage disequilibrium-adjusted
110 weight and sums these products across all available variants to generate a GRS for each
111 individual^{23,33}. CAD GRSs were also calculated after excluding genetic variants located within
112 7.5 million base pairs upstream and downstream of the *LPA* gene. CAD GRSs were converted
113 into percentiles relative to the distribution of CAD GRSs in the UK Biobank study population.

114 The top 100 genetic variants used in the calculation of CAD GRSs were manually curated
115 for association with known cardiovascular risk factors using the NHGRI-EBI Genome-Wide
116 Association Study Catalog³⁴.

117 ***Definition of cardiovascular events.***

118 Phenotypes, including the primary outcome of myocardial infarction, were defined using
119 reports from medical history interviews occurring at enrollment, International Classification of
120 Diseases (ICD)-9th and -10th Revision codes, and death registry records (Supplemental Methods,
121 Supplemental Table 2). Events occurring before and after enrolment were included unless
122 otherwise stated. Events occurring prior to enrolment were identified by either self-reported
123 medical history and/or previous hospital admission within an electronic health record. Incident

124 events were defined by hospital admission with an electronic health record entry or death
125 records. Events were censored on the date of loss-to-follow-up or if individuals remained event-
126 free up to March 31, 2017.

127 *Statistical analyses.*

128 All statistical analyses were performed using R version 3.6.0 software (R Core Team,
129 2019). Individuals with missing values were excluded from analyses.

130 Chi-square tests were used for contingency analyses. For comparison of 2 groups, data
131 were analyzed with an unpaired t-test or Mann–Whitney U test as appropriate. For comparison
132 of more than 2 groups, data were analyzed with one-way analysis of variance test (with Tukey's
133 multiple comparison post hoc tests) or Kruskal-Wallis test, as appropriate (with Dunn's multiple
134 comparison post hoc tests).

135 The distributions of CAD GRS percentiles were compared between individuals with
136 traditional cardiovascular risk factors determined at study enrollment that included:
137 hypertension, severe hypercholesterolemia (low-density lipoprotein cholesterol levels ≥ 4.9
138 mmol/L), diabetes mellitus, obesity (body mass index ≥ 30 kg/m²), current smoker status,
139 insufficient physical activity (classification of low activity level according to the International
140 Physical Activity Questionnaire), insufficient fruit and vegetable intake (< 3 servings per day;
141 sum of cooked vegetable intake, fresh fruit intake, and salad/raw vegetable intake), and strata of
142 lipoprotein(a) levels (<72 , 72-120, 120-168, and ≥ 168 nmol/L).

143 The prevalence of cardiovascular events of interest were calculated for each decile of
144 CAD GRS percentile. Linear regression models were used to assess the correlation between
145 cardiovascular disease prevalence and CAD GRS percentile using elevated lipoprotein(a) status
146 as a covariate or interactive term

147 Time-to-event analyses were analyzed with the “survival” version 2.43-3 package for R
148 with Log-rank tests. Hazard ratios (HRs) and 95% confidence intervals (CIs) were calculated
149 using Cox regression models stratified by sex with age of event as a time scale. All Cox
150 regression models were adjusted for the first 4 principal components of ancestry and genotyping
151 array.

152 Statistical significance was claimed when two-sided p-values were <0.05.

153

154 **RESULTS**

155 *Characteristics of individuals from the UK Biobank.*

156 This study included 408,896 individuals of British white ancestry from the UK Biobank
157 study, of whom 310,020 had lipoprotein(a) levels measured at enrollment (Table 1). The average
158 age of enrollment was 56.9 years-of-age (standard deviation: 8.0 years) and 54.1% were female.

159 *Genomic risk scores for coronary artery disease associate with the prevalence of traditional* 160 *cardiovascular risk factors.*

161 First, we assessed how CAD GRSs were associated with traditional cardiovascular risk
162 factors. Individuals with hypertension, severe hypercholesterolemia, diabetes mellitus, obesity,
163 and a current smoker status displayed significantly higher CAD GRS percentiles than those
164 without the cardiovascular risk factor of interest (Mann-Whitney U test: $p=0.0006$ for smoking
165 status, $p<0.0001$ for others; Figure 1a-e; Supplemental Table 3). There was also a significant
166 stepwise increase in the median CAD GRS percentile as the number of traditional CAD risk
167 factors per an individual increased (Kruskal-Wallis test: $p<0.0001$; Figure 1f). Alternatively,
168 CAD GRSs did not display an association with insufficient physical activity (Mann–Whitney U

169 test: $p=0.40$) or an insufficient daily intake of fruits and vegetables (Mann–Whitney U test:
170 $p=0.40$) (Supplemental Figure 1).

171 ***Individuals with elevated lipoprotein(a) have higher genomic risk scores for coronary artery***
172 ***disease.***

173 CAD GRS percentiles displayed a significant and strong association with lipoprotein(a)
174 levels (Kruskal–Wallis test: $p<0.0001$; Figure 2A). Notably, individuals with lipoprotein(a)
175 levels greater or equal to 120 nmol/L (≈ 50 mg/dL) displayed a median CAD GRS of 65.2
176 percentile. Individuals with elevated lipoprotein(a) tended to have CAD GRSs that were
177 comparable to individuals with multiple traditional cardiovascular risk factors at the time of
178 study enrollment (*i.e.* the median CAD GRS percentile for individuals with hypertension, severe
179 hypercholesterolemia, diabetes mellitus, obesity, and current smoker status was 65.5 percentile).
180 The higher CAD GRS percentile observed among individuals with elevated lipoprotein(a) was
181 dependent on genetic loci within and around the *LPA* gene. When CAD GRSs were re-calculated
182 after the exclusion of DNA variants located 7.5 million base pairs up- or downstream of the *LPA*
183 gene, the difference in CAD GRSs across strata of lipoprotein(a) levels was attenuated (Kruskal–
184 Wallis test: $p=0.02$; Figure 2B; Supplemental Table 4).

185 The strong association between CAD GRSs and elevated lipoprotein(a) reflects both the
186 high heritability and atherogenicity of lipoprotein(a) particles. Specifically, the locus in the CAD
187 GRS with the greatest standardized effect size (rs186696265; GRCh37 position
188 6:161111700:C:T), and hence the greatest influence on CAD GRSs by weight, is known to
189 associate with lipoprotein(a) levels (Figure 2C). Moreover, 6 of the top 100 loci with the largest
190 standardized effect sizes in the CAD GRSs have known associations with lipoprotein(a) levels
191 and include: rs186696265, rs10455872 (6:161010118:A:G), rs55730499 (6:161005610:C:T),

192 rs118039278 (6:160985526:G:A), rs56393506 (6:161089307:C:T), and rs4252185
193 (6:161123451:T:C) (Figure 2C).

194 ***Association of lipoprotein(a) levels with risk of myocardial infarction.***

195 Consistent with previous studies^{1,27}, lipoprotein(a) levels were right-skewed among
196 individuals of British white ancestry from the UK Biobank (Figure 3A). The median and
197 interquartile range of lipoprotein(a) levels was 20.1 and 50.9 nmol/L, respectively. The risk of
198 myocardial infarction was significantly associated with lipoprotein(a) levels for both male
199 (adjusted HR [95% CI] 1.06 [1.06-1.07] per 20 nmol/L increase, $p < 0.0001$; Figure 3B) and
200 female UK Biobank participants (adjusted HR [95% CI] 1.03 [1.02-1.05] per 20 nmol/L
201 increase, $p < 0.0001$; Figure 3C).

202 ***Risk of myocardial infarction is modulated by coronary artery disease genomic risk score
203 among individuals with elevated lipoprotein(a).***

204 Next, we assessed if CAD GRSs may help explain some of the heterogeneity in risk of
205 CAD that is observed in individuals with elevated lipoprotein(a), defined as ≥ 120 nmol/L (≈ 50
206 mg/dL). The prevalence of myocardial infarction was significantly associated with deciles of
207 CAD GRS percentile in both individuals with and without elevated lipoprotein(a) (Figure 4A).
208 Individuals with elevated lipoprotein(a) displayed a significantly greater prevalence of
209 myocardial infarction relative to individuals with non-elevated lipoprotein(a) levels across all
210 deciles of CAD GRS (β [SE] = 0.786 [0.194], $R^2 = 0.913$, $p = 0.0009$; Figure 4A; Supplemental
211 Table 5). This effect was even more striking when deciles of CAD GRS percentile were
212 calculated after excluding loci associated within and in proximity to the *LPA* gene (β [SE] =
213 1.494 [0.216], $R^2 = 0.920$, $p < 0.0001$; Figure 4B). Individuals with elevated lipoprotein(a) but a
214 CAD GRS in the first decile had a lower prevalence of myocardial than individuals with non-

215 elevated lipoprotein(a) and a CAD GRS in the tenth decile (2.98% vs 6.61%, Figure 4B). These
216 data indicate that the CAD GRS modulates the risk of myocardial infarction associated with
217 elevated lipoprotein(a). There was no significant interaction between lipoprotein(a) status and
218 CAD GRS that included or excluded loci in and nearby *LPA*.

219 We next examined the cumulative risk of myocardial infarction across time in males and
220 females with elevated lipoprotein(a) as a function of CAD GRS. We observed a significant effect
221 of the CAD GRS on risk of myocardial infarction in these individuals with elevated
222 lipoprotein(a). The adjusted HR for males was 1.28 (95% CI: 1.23-1.33, $p < 0.0001$) and for
223 females was 1.16 (95% CI: 1.08-1.25, $p < 0.0001$) per 20 unit increase in continuous CAD GRS
224 percentile. Notably, the risk of myocardial infarction for individuals with elevated lipoprotein(a)
225 levels, but a CAD GRS percentile in the lower quintile ($< 20^{\text{th}}$ percentile), was less than or
226 equivalent to the overall risk of myocardial infarction for those with non-elevated lipoprotein(a)
227 levels (adjusted HR [95% CI]: 0.79 [0.64-0.97] and 0.91 [0.66-1.26] with $p = 0.02$ and $p = 0.58$ for
228 males and females, respectively; Figure 4C). Similar results were observed when the risk of
229 myocardial infarction was compared between quintiles of CAD GRS percentiles that excluded
230 loci surrounding the *LPA* gene (adjusted HR [95% CI] were 0.85 [0.73-0.98] and 0.83 [0.64 -
231 1.07] with $p = 0.03$ and $p = 0.15$ for males and females, respectively; Figure 3D).

232 Even among individuals with higher lipoprotein(a) levels of ≥ 168 nmol/L (≈ 70 mg/dL
233 and comprising the top 3.5 percent of the population distribution), we observed a significant
234 effect of the CAD GRS percentiles on risk of myocardial infarction (Supplemental Figure 2).
235 Specifically, among these individuals, the adjusted HR for myocardial infarction was 1.31 for
236 males (95% CI: 1.22-1.41, $p < 0.0001$) and 1.19 for females (95% CI: 1.04-1.34, $p = 0.009$) per 20
237 percentile increase in continuous CAD GRS. These findings highlight that genomic background

238 can still modulate the risk of myocardial infarction for individuals with elevated lipoprotein(a)
239 and suggest that the CAD GRS may be useful to stratify cardiovascular risk in individuals
240 identified to have elevated lipoprotein(a).

241 *Effect of coronary artery disease genomic risk score on other cardiovascular outcomes*
242 *associated with lipoprotein(a).*

243 Lipoprotein(a) is also likely a causal risk factor for peripheral vascular disease and aortic
244 stenosis^{10,35}, and, to a lesser extent, ischemic stroke^{12,36}. Since there is considerable overlap of
245 risk factors between these cardiovascular conditions and CAD³⁷, we sought to assess if CAD
246 GRSs also modulate the risk of these conditions among individuals with elevated lipoprotein(a).
247 We observed a trend towards increased prevalence of peripheral vascular disease (β [SE]: 0.120
248 [0.055], $p=0.002$, $R^2=0.712$), aortic stenosis (β [SE]: 0.241 [0.056], $p=0.0005$, $R^2=0.615$), and
249 ischemic stroke (β [SE]: 0.182 [0.072], $p=0.02$, $R^2=0.361$) for individuals with elevated
250 lipoprotein(a), relative to individuals with non-elevated lipoprotein(a) (Supplemental Figure 3;
251 Supplemental Tables 6-8). The strength of the association between prevalence of ischemic stroke
252 and deciles of CAD GRS percentile was weak due to fewer events relative to the other
253 cardiovascular conditions.

254

255 **DISUCSSION**

256 Here we report that common genetic factors modify the risk of myocardial infarction and
257 other adverse cardiovascular outcomes among individuals with elevated lipoprotein(a). These
258 data highlight the atherogenicity and high heritability of lipoprotein(a) levels, as reflected by the
259 substantial increases in CAD GRSs observed among individuals with elevated lipoprotein(a).
260 The increased CAD GRSs observed in individuals with elevated lipoprotein(a) were almost

261 entirely explained by single-nucleotide variants near the *LPA* gene having large weighted effect
262 sizes, and thus, a large influence on the CAD GRS.

263 This work adds to the growing literature highlighting the role that polygenic factors play
264 in modifying the penetrance or expressivity of monogenic conditions, such as familial
265 hypercholesterolemia^{22,38–40}. To our knowledge, this is the first study to describe the polygenic
266 modulation of myocardial infarction and other adverse cardiovascular outcomes by CAD GRSs
267 among individuals with elevated lipoprotein(a).

268 Elevated lipoprotein(a) is a common monogenic condition resulting from genetic
269 variation in and around the *LPA* gene, which includes single-nucleotide variants and copy
270 number variation in the KIV-2 DNA sequence. Variation in the number of KIV-2 repeats results
271 in plasma lipoprotein(a) particles that display considerable interindividual variation in
272 apolipoprotein(a) isoform size (ranging from 300-800 kDa). The number of KIV-2 repeats are
273 also inversely associated with lipoprotein(a) levels. However, lipoprotein(a) levels (*i.e.* molar
274 concentration), rather than apo(a) isoform size, appears to be most strongly associated with risk
275 of CAD^{20,41,42}.

276 Approximately 1 in 5 individuals of European ancestry have lipoprotein(a) levels greater
277 than 120 nmol/L (\approx 50 mg/mL), which is a common cut-off for estimation of cardiovascular risk
278 and consideration of therapy³⁰. Lipoprotein(a) levels greater than 120 nmol/L are also common
279 among individuals of African (1 in 4), South and South East Asian (\sim 1 in 10), Arab (\sim 1 in 10),
280 and Latin American (\sim 1 in 7) ethnicity and also associated with risk of CAD in these
281 populations^{20,43,44}. However, the optimal management of patients with elevated lipoprotein(a) is
282 uncertain. Antisense inhibitors that potently lower lipoprotein(a) are currently being studied in
283 clinical trials in subjects with elevated lipoprotein(a) and established cardiovascular disease^{17–19}.

284 Our study suggests that the CAD GRS may be useful for identifying high risk patients that are
285 likely to benefit most from lipoprotein(a)-lowering therapy, or other therapies that reduce
286 cardiovascular risk among individuals with elevated lipoprotein(a). In support of this hypothesis,
287 previous studies have shown that individuals with high genetic risk for CAD demonstrate greater
288 absolute risk reduction of cardiovascular events from statins^{24,45} or PCSK9 inhibitors⁴⁶ relative to
289 individuals at lower genetic risk. In addition, the data presented here suggest that a GRS may be
290 useful to de-risk patients with isolated elevated lipoprotein(a), as we observed that a low GRS in
291 such individuals was associated with a risk of myocardial infarction that was similar to, or lower
292 than, that of individuals with non-elevated lipoprotein(a) and a median GRS. The extent to which
293 CAD GRSs can improve risk prediction beyond established clinical risk scores requires further
294 investigation⁴⁷. However, a major advantage of assessing germline genetic variation for
295 cardiovascular risk assessment is that it only needs to be measured once and can be measured
296 early in life, allowing for earlier intervention before other clinical risk factors may emerge^{7,25,46}.

297 This study has some notable strengths and limitations worthy of consideration. Firstly, we
298 were able to use a very large population of more than 300,000 individuals with standardized
299 lipoprotein(a) measurements using an isoform insensitive assay, and genome-wide genotype
300 data. As such, this represents one of the largest population-based studies of lipoprotein(a) to date.
301 Limitations are that the population studied was comprised of individuals of European ancestry
302 and may not be representative of other global populations. While this aspect of the study reduces
303 the risk of bias or confounding due to population stratification, it also limits the generalization of
304 these results to other ancestral populations. Future studies using large populations of individuals
305 from diverse ancestral backgrounds are therefore essential. Indeed, as the calculation and
306 calibration of the CAD GRSs depend on linkage disequilibrium^{7,23}, which varies substantially

307 across ancestries, future studies will be needed to derive and validate CAD GRSs in other
308 ancestral groups. The UK Biobank population also displays a healthy volunteer selection bias
309 relative to the overall health and well-being of individuals living across the United Kingdom⁴⁸.
310 Furthermore, the CAD GRS was constructed to best identify individuals at risk of CAD and is
311 likely not as sensitive at identifying individuals at risk of the other cardiovascular conditions
312 described, which include peripheral vascular disease, aortic stenosis, and ischemic stroke. GRSs
313 calibrated specifically for these conditions will likely improve risk prediction.

314 In summary, genetic factors were shown to significantly modulate the risk of CAD in
315 individuals with elevated lipoprotein(a). Assessment of background polygenic factors may help
316 to personalize risk assessment in individuals with elevated lipoprotein(a) and identify candidates
317 for preventative therapy.

318

319 **ACKNOWLEDGEMENTS**

320 We acknowledge the participants and individuals involved in the UK Biobank studies; the
321 developers of software tools used in this study; and Compute Canada for establishing
322 computational resources and providing support.

323 REFERENCES

- 324 1. Kamstrup PR, Tybjaerg-Hansen A, Steffensen R, Nordestgaard BG. Genetically elevated
325 lipoprotein(a) and increased risk of myocardial infarction. *JAMA* 2009;301:2331–2339.
- 326 2. Holmes DT, Schick BA, Humphries KH, Frohlich J. Lipoprotein(a) is an independent risk
327 factor for cardiovascular disease in heterozygous familial hypercholesterolemia. *Clin Chem*
328 2005;51:2067–2073.
- 329 3. Khera AV, Everett BM, Caulfield MP, Hantash FM, Wohlgemuth J, Ridker PM, Mora S.
330 Lipoprotein(a) concentrations, rosuvastatin therapy, and residual vascular risk: an analysis
331 from the JUPITER Trial (Justification for the Use of Statins in Prevention: An Intervention
332 Trial Evaluating Rosuvastatin). *Circulation* 2014;129:635–642.
- 333 4. Emerging Risk Factors Collaboration, Erqou S, Kaptoge S, Perry PL, Di Angelantonio E,
334 Thompson A, White IR, Marcovina SM, Collins R, Thompson SG, Danesh J.
335 Lipoprotein(a) concentration and the risk of coronary heart disease, stroke, and nonvascular
336 mortality. *JAMA* 2009;302:412–423.
- 337 5. Clarke R, Peden JF, Hopewell JC, Kyriakou T, Goel A, Heath SC, Parish S, Barlera S,
338 Franzosi MG, Rust S, Bennett D, Silveira A, Malarstig A, Green FR, Lathrop M, Gigante
339 B, Leander K, Faire U de, Seedorf U, Hamsten A, Collins R, Watkins H, Farrall M;
340 PROCARIS Consortium. Genetic variants associated with Lp(a) lipoprotein level and
341 coronary disease. *N Engl J Med* 2009;361:2518–2528.
- 342 6. Boerwinkle E, Leffert CC, Lin J, Lackner C, Chiesa G, Hobbs HH. Apolipoprotein(a) gene
343 accounts for greater than 90% of the variation in plasma lipoprotein(a) concentrations. *J*
344 *Clin Invest* 1992;90:52–60.
- 345 7. Khera AV, Chaffin M, Aragam KG, Haas ME, Roselli C, Choi SH, Natarajan P, Lander
346 ES, Lubitz SA, Ellinor PT, Kathiresan S. Genome-wide polygenic scores for common
347 diseases identify individuals with risk equivalent to monogenic mutations. *Nat Genetics*
348 2018;50:1219–1224.
- 349 8. Wei WQ, Li X, Feng Q, Kubo M, Kullo IJ, Peissig PL, Karlson EW, Jarvik GP, Lee MTM,
350 Shang N, Larson EA, Edwards T, Shaffer CM, Mosley JD, Maeda S, Horikoshi M, Ritchie
351 M, Williams MS, Larson EB, Crosslin DR, Bland ST, Pacheco JA, Rasmussen-Torvik LJ,
352 Cronkite D, Hripesak G, Cox NJ, Wilke RA, Stein CM, Rotter JI, Momozawa Y, Roden
353 DM, Krauss RM, Denny JC. LPA variants are associated with residual cardiovascular risk
354 in patients receiving statins. *Circulation* 2018;138:1839–1849.
- 355 9. Emdin CA, Khera AV, Natarajan P, Klarin D, Won H-H, Peloso GM, Stitzziel NO, Nomura
356 A, Zekavat SM, Bick AG, Gupta N, Asselta R, Duga S, Merlini PA, Correa A, Kessler T,
357 Wilson JG, Bown MJ, Hall AS, Braund PS, Samani NJ, Schunkert H, Marrugat J, Elosua R,
358 McPherson R, Farrall M, Watkins H, Willer C, Abecasis GR, Felix JF, Vasani RS, Lander
359 E, Rader DJ, Danesh J, Ardissino D, Gabriel S, Saleheen D, Kathiresan S; CHARGE–Heart
360 Failure Consortium; CARDIoGRAM Exome Consortium. Phenotypic characterization of
361 genetically lowered human lipoprotein(a) levels. *J Am Coll Cardiol* 2016;68:2761–2772.

- 362 10. Kamstrup PR, Tybjaerg-Hansen A, Nordestgaard BG. Elevated lipoprotein(a) and risk of
363 aortic valve stenosis in the general population. *J Am Coll Cardiol*. 2014;63:470–477.
- 364 11. Kamstrup PR, Nordestgaard BG. Elevated lipoprotein(a) levels, LPA risk genotypes, and
365 increased risk of heart failure in the general population. *JACC Heart Fail* 2016;4:78–87.
- 366 12. Langsted A, Nordestgaard BG, Kamstrup PR. Elevated lipoprotein(a) and risk of ischemic
367 stroke. *J Am Coll Cardiol* 2019;74:54–66.
- 368 13. Saleheen D, Haycock PC, Zhao W, Rasheed A, Taleb A, Imran A, Abbas S, Majeed F,
369 Akhtar S, Qamar N, Zaman KS, Yaqoob Z, Saghir T, Rizvi SNH, Memon A, Mallick NH,
370 Ishaq M, Rasheed SZ, Memon F-R, Mahmood K, Ahmed N, Frossard P, Tsimikas S,
371 Witztum JL, Marcovina S, Sandhu M, Rader DJ, Danesh J. Apolipoprotein(a) isoform size,
372 lipoprotein(a) concentration, and coronary artery disease: a mendelian randomisation
373 analysis. *Lancet Diabetes Endocrinol* 2017;5:524–533.
- 374 14. Kettunen J, Demirkan A, Würtz P, Draisma HHM, Haller T, Rawal R, Vaarhorst A, Kangas
375 AJ, Lyytikäinen LP, Pirinen M, Pool R, Sarin AP, Soininen P, Tukiainen T, Wang Q,
376 Tiainen M, Tynkkynen T, Amin N, Zeller T, Beekman M, Deelen J, van Dijk KW, Esko T,
377 Hottenga JJ, van Leeuwen EM, Lehtimäki T, Mihailov E, Rose RJ, de Craen AJM, Gieger
378 C, Kähönen M, Perola M, Blankenberg S, Savolainen MJ, Verhoeven A, Viikari J,
379 Willemsen G, Boomsma DI, van Duijn CM, Eriksson J, Jula A, Järvelin MR, Kaprio J,
380 Metspalu A, Raitakari O, Salomaa V, Slagboom PE, Waldenberger M, Ripatti S, Ala-
381 Korpela M. Genome-wide study for circulating metabolites identifies 62 loci and reveals
382 novel systemic effects of LPA. *Nat Commun* 2016;7:11122.
- 383 15. Coassin S, Erhart G, Weissensteiner H, Eca Guimarães de Araújo M, Lamina C, Schönherr
384 S, Forer L, Haun M, Losso JL, Köttgen A, Schmidt K, Utermann G, Peters A, Gieger C,
385 Strauch K, Finkenstedt A, Bale R, Zoller H, Paulweber B, Eckardt K-U, Hüttenhofer A,
386 Huber LA, Kronenberg F. A novel but frequent variant in LPA KIV-2 is associated with a
387 pronounced Lp(a) and cardiovascular risk reduction. *Eur Heart J* 2017;38:1823–1831.
- 388 16. Nordestgaard BG, Chapman MJ, Ray K, Borén J, Andreotti F, Watts GF, Ginsberg H,
389 Amarenco P, Catapano A, Descamps OS, Fisher E, Kovanen PT, Kuivenhoven JA, Lesnik
390 P, Masana L, Reiner Z, Taskinen M-R, Tokgözoğlu L, Tybjaerg-Hansen A. Lipoprotein(a)
391 as a cardiovascular risk factor: current status. *Eur Heart J* 2010;31:2844–2853.
- 392 17. Tsimikas S, Karwatowska-Prokopczuk E, Gouni-Berthold I, Tardif JC, Baum SJ,
393 Steinhagen-Thiessen E, Shapiro MD, Stroes ES, Moriarty PM, Nordestgaard BG, Xia S,
394 Guerriero J, Viney NJ, O’Dea L, Witztum JL. Lipoprotein(a) reduction in persons with
395 cardiovascular disease. *N Engl J Med* 2020;382:244–255.
- 396 18. Viney NJ, van Capelleveen JC, Geary RS, Xia S, Tami JA, Yu RZ, Marcovina SM, Hughes
397 SG, Graham MJ, Croke RM, Croke ST, Witztum JL, Stroes ES, Tsimikas S. Antisense
398 oligonucleotides targeting apolipoprotein(a) in people with raised lipoprotein(a): two
399 randomised, double-blind, placebo-controlled, dose-ranging trials. *Lancet* 2016;388:2239–
400 2253.

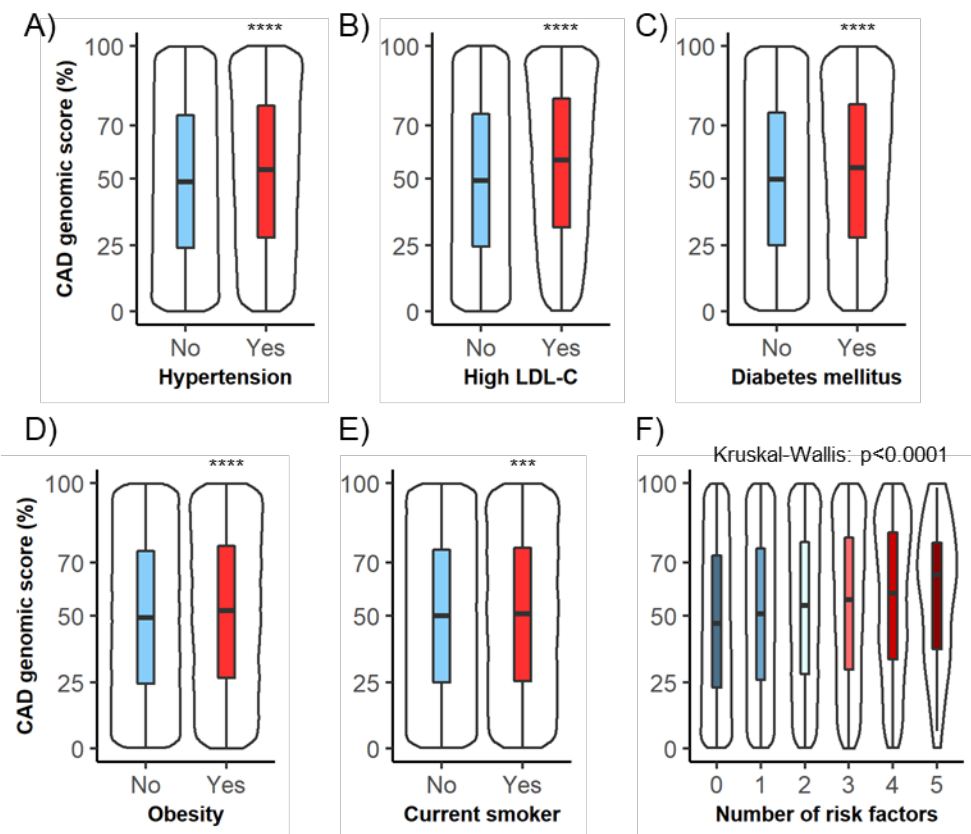
- 401 19. Tsimikas S, Viney NJ, Hughes SG, Singleton W, Graham MJ, Baker BF, Burkey JL, Yang
402 Q, Marcovina SM, Geary RS, Crooke RM, Witztum JL. Antisense therapy targeting
403 apolipoprotein(a): a randomised, double-blind, placebo-controlled phase 1 study. *Lancet*
404 2015;386:1472–1483.
- 405 20. Paré G, Çaku A, McQueen M, Anand SS, Enas E, Clarke R, Boffa M, Koschinsky M,
406 Wang X, Yusuf S, INTERHEART Investigators. Lipoprotein(a) levels and the risk of
407 myocardial infarction among 7 ethnic groups. *Circulation* 2019;139:1472–1482.
- 408 21. Langsted A, Kamstrup PR, Benn M, Tybjaerg-Hansen A, Nordestgaard BG. High
409 lipoprotein(a) as a possible cause of clinical familial hypercholesterolaemia: a prospective
410 cohort study. *Lancet Diabetes Endocrinol* 2016;4:577–587.
- 411 22. Khera AV, Chaffin M, Zekavat SM, Collins RL, Roselli C, Natarajan P, Lichtman JH.,
412 D’Onofrio G, Mattera J, Dreyer R, Spertus JA., Taylor KD, Psaty PM, Rich SS, Post W,
413 Gupta N, Gabriel S, Lander E, Ida Chen YD, Talkowski ME, Rotter JI, Krumholz HM,
414 Kathiresan S. Whole-genome sequencing to characterize monogenic and polygenic
415 contributions in patients hospitalized with early-onset myocardial infarction. *Circulation*
416 2019;139:1593–1602.
- 417 23. Vilhjálmsson BJ, Yang J, Finucane HK, Gusev A, Lindström S, Ripke S, Genovese G, Loh
418 PR, Bhatia G, Do R, Hayeck T, Won HH; Schizophrenia Working Group of the Psychiatric
419 Genomics Consortium, Discovery, Biology, and Risk of Inherited Variants in Breast Cancer
420 (DRIVE) study, Kathiresan S, Pato M, Pato C, Tamimi R, Stahl E, Zaitlen N, Pasaniuc B,
421 Belbin G, Kenny EE, Schierup MH, De Jager P, Patsopoulos NA, McCarroll S, Daly M,
422 Purcell S, Chasman D, Neale B, Goddard M, Visscher PM, Kraft P, Patterson N, Price AL.
423 Modeling linkage disequilibrium increases accuracy of polygenic risk scores. *Am J Hum*
424 *Genet* 2015;97:576–592.
- 425 24. Natarajan P, Young R, Stitzel NO, Padmanabhan S, Baber U, Mehran R, Sartori S, Fuster
426 V, Reilly DF, Butterworth A, Rader DJ, Ford I, Sattar N, Kathiresan S. Polygenic risk score
427 identifies subgroup with higher burden of atherosclerosis and greater relative benefit from
428 statin therapy in the primary prevention setting. *Circulation* 2017;135:2091–2101.
- 429 25. Pereira A, Mendonca MI, Borges S, Sousa AC, Freitas S, Henriques E, Rodrigues M,
430 Freitas AI, Guerra G, Freitas C, Pereira D, Brehm A, Reis RPD. Additional value of a
431 combined genetic risk score to standard cardiovascular stratification. *Genet Mol Biol*
432 2018;41:766–774.
- 433 26. Bycroft C, Freeman C, Petkova D, Band G, Elliott LT, Sharp K, Motyer A, Vukcevic D,
434 Delaneau O, O’Connell J, Cortes A, Welsh S, Young A, Effingham M, McVean G, Leslie
435 S, Allen N, Donnelly P, Marchini J. The UK Biobank resource with deep phenotyping and
436 genomic data. *Nature* 2018;562:203–209.
- 437 27. Verbeek R, Boekholdt SM, Stoekenbroek RM, Hovingh GK, Witztum JL, Wareham NJ,
438 Sandhu MS, Khaw KT, Tsimikas S. Population and assay thresholds for the predictive
439 value of lipoprotein (a) for coronary artery disease: the EPIC-Norfolk Prospective
440 Population Study. *J Lipid Res* 2016;57:697-705.

- 441 28. Brown WV, Ballantyne CM, Jones PH, Marcovina S. Management of Lp(a). *J Clin Lipidol*
442 2010;4:240–247.
- 443 29. Burgess S, Ference BA, Staley JR, Freitag DF, Mason AM, Nielsen SF, Willeit P, Young
444 R, Surendran P, Karthikeyan S, Bolton TR, Peters JE, Kamstrup PR, Tybjaerg-Hansen A,
445 Benn M, Langsted A, Schnohr P, Vedel-Krogh S, Kobylecki CJ, Ford I, Packard C,
446 Trompet S, Jukema JW, Sattar N, Di Angelantonio E, Saleheen D, Howson JMM,
447 Nordestgaard BG, Butterworth AS, Danesh J; European Prospective Investigation Into
448 Cancer and Nutrition–Cardiovascular Disease (EPIC-CVD) Consortium. Association of
449 LPA variants with risk of coronary disease and the implications for lipoprotein(a)-lowering
450 therapies: a Mendelian randomization analysis. *JAMA Cardiol* 2018;3:619–627.
- 451 30. Madsen CM, Kamstrup PR, Langsted A, Varbo A, Nordestgaard BG. Lipoprotein(a)-
452 lowering by 50 mg/dL (105 nmol/L) may be needed to reduce cardiovascular disease 20%
453 in secondary prevention. *Arterioscler Thromb Vasc Biol* 2020;40:255–266.
- 454 31. Benn M, Watts GF, Tybjaerg-Hansen A, Nordestgaard BG. Mutations causative of familial
455 hypercholesterolaemia: screening of 98 098 individuals from the Copenhagen General
456 Population Study estimated a prevalence of 1 in 217. *Eur Heart J* 2016;37:1384–1394.
- 457 32. Jones PH, Davidson MH, Stein EA, Bays HE, McKenney JM, Miller E, Cain VA, Blasetto
458 JW; STELLAR Study Group. Comparison of the efficacy and safety of rosuvastatin versus
459 atorvastatin, simvastatin, and pravastatin across doses (STELLAR* Trial). *Am J Cardiol*
460 2003;92:152–160.
- 461 33. Purcell S, Neale B, Todd-Brown K, Thomas L, Ferreira MAR, Bender D, Maller J, Sklar P,
462 de Bakker PIW, Daly MJ, Sham PC. PLINK: A tool set for whole-genome association and
463 population-based linkage analyses. *Am J Hum Genet* 2007;81:559–575.
- 464 34. Buniello A, MacArthur JAL, Cerezo M, Harris LW, Hayhurst J, Malangone C, McMahon
465 A, Morales J, Mountjoy E, Sollis E, Suveges D, Vrousseau O, Whetzel PL, Amode R,
466 Guillen JA, Riat HS, Trevanion SJ, Hall P, Junkins H, Flicek P, Burdett T, Hindorf LA,
467 Cunningham F, Parkinson H. The NHGRI-EBI GWAS Catalog of published genome-wide
468 association studies, targeted arrays and summary statistics 2019. *Nucleic Acids Res*
469 2019;47:D1005–D1012.
- 470 35. Thanassoulis G, Campbell CY, Owens DS, Smith JG, Smith AV, Peloso GM, Kerr KF,
471 Pechlivanis S, Budoff MJ, Harris TB, Malhotra R, O'Brien KD, Kamstrup PR,
472 Nordestgaard BG, Tybjaerg-Hansen A, Allison MA, Aspelund T, Criqui MH, Heckbert SR,
473 Hwang SJ, Liu Y, Sjogren M, van der Pals J, Kälsch H, Mühleisen TW, Nöthen MM,
474 Cupples LA, Caslake M, Di Angelantonio E, Danesh J, Rotter JJ, Sigurdsson S, Wong Q,
475 Erbel R, Kathiresan S, Melander O, Gudnason V, O'Donnell CJ, Post WS; CHARGE
476 Extracoronary Calcium Working Group. Genetic associations with valvular calcification
477 and aortic stenosis. *N Engl J Med*. 2013;368:503–512.
- 478 36. Helgadottir A, Gretarsdottir S, Thorleifsson G, Holm H, Patel RS, Gudnason T, Jones GT,
479 van Rij AM, Eapen DJ, Baas AF, Tregouet DA, Morange PE, Emmerich J, Lindblad B,
480 Gottsäter A, Kiemeny LA, Lindholt JS, Sakalihasan N, Ferrell RE, Carey DJ, Elmore JR,

- 481 Tsao PS, Grarup N, Jørgensen T, Witte DR, Hansen T, Pedersen O, Pola R, Gaetani E,
482 Magnadottir HB, Wijmenga C, Tromp G, Ronkainen A, Ruigrok YM, Blankensteijn JD,
483 Mueller T, Wells PS, Corral J, Soria JM, Souto JC, Peden JF, Jalilzadeh S, Mayosi BM,
484 Keavney B, Strawbridge RJ, Sabater-Lleal M, Gertow K, Baldassarre D, Nyssönen K,
485 Rauramaa R, Smit AJ, Mannarino E, Giral P, Tremoli E, de Faire U, Humphries SE,
486 Hamsten A, Haraldsdottir V, Olafsson I, Magnusson MK, Samani NJ, Levey AI, Markus
487 HS, Kostulas K, Dichgans M, Berger K, Kuhlenbäumer G, Ringelstein EB, Stoll M,
488 Seedorf U, Rothwell PM, Powell JT, Kuivaniemi H, Onundarson PT, Valdimarsson E,
489 Matthiasson SE, Gudbjartsson DF, Thorgeirsson G, Quyyumi AA, Watkins H, Farrall M,
490 Thorsteinsdottir U, Stefansson K. Apolipoprotein(a) genetic sequence variants associated
491 with systemic atherosclerosis and coronary atherosclerotic burden but not with venous
492 thromboembolism. *J Am Coll Cardiol*. 2012;60:722–729.
- 493 37. Klarin D, Lynch J, Aragam K, Chaffin M, Assimes TL, Huang J, Lee KM, Shao Q,
494 Huffman JE, Natarajan P, Arya S, Small A, Sun YV, Vujkovic M, Freiberg MS, Wang L,
495 Chen J, Saleheen D, Lee JS, Miller DR, Reaven P, Alba PR, Patterson OV, DuVall SL,
496 Boden WE, Beckman JA, Gaziano JM, Concato J, Rader DJ, Cho K, Chang KM, Wilson
497 PWF, O'Donnell CJ, Kathiresan S; VA Million Veteran Program, Tsao PS, Damrauer SM.
498 Genome-wide association study of peripheral artery disease in the Million Veteran
499 Program. *Nature Med* 2019;25:1274–1279.
- 500 38. Trinder M, Li X, DeCastro ML, Cermakova L, Sadananda S, Jackson LM, Azizi H,
501 Mancini GBJ, Francis GA, Frohlich J, Brunham LR. Risk of premature atherosclerotic
502 disease in patients with monogenic versus polygenic familial hypercholesterolemia. *J Am*
503 *Coll Cardiol*. 2019;74:512–522.
- 504 39. Fahed AC, Wang M, Homburger JR, Patel AP, Bick AG, Neben CL, Lai C, Brockman D,
505 Philippakis A, Ellinor PT, Cassa CA, Lebo M, Ng K, Lander ES, Zhou AY, Kathiresan S,
506 Khera AV. Polygenic background modifies penetrance of monogenic variants conferring
507 risk for coronary artery disease, breast cancer, or colorectal cancer. *medRxiv*
508 2019;19013086.
- 509 40. Oetjens MT, Kelly MA, Sturm AC, Martin CL, Ledbetter DH. Quantifying the polygenic
510 contribution to variable expressivity in eleven rare genetic disorders. *Nat Commun*
511 2019;10:4897.
- 512 41. Gudbjartsson DF, Thorgeirsson G, Sulem P, Helgadottir A, Gylfason A, Saemundsdottir J,
513 Bjornsson E, Norddahl GL, Jonasdottir A, Jonasdottir A, Eggertsson HP, Gretarsdottir S,
514 Thorleifsson G, Indridason OS, Palsson R, Jonasson F, Jonsdottir I, Eyjolfsson GI,
515 Sigurdardottir O, Olafsson I, Danielsen R, Matthiasson SE, Kristmundsdottir S,
516 Halldorsson BV, Hreidarsson AB, Valdimarsson EM, Gudnason T, Benediktsson R,
517 Steinthorsdottir V, Thorsteinsdottir U, Holm H, Stefansson K. Lipoprotein(a) concentration
518 and risks of cardiovascular disease and diabetes. *J Am Coll Cardiol* 2019;74:2982–2994.
- 519 42. Willeit P, Kiechl S, Kronenberg F, Witztum JL, Santer P, Mayr M, Xu Q, Mayr A, Willeit
520 J, Tsimikas S. Discrimination and net reclassification of cardiovascular risk with

- 521 lipoprotein(a): prospective 15-year outcomes in the Bruneck Study. *J Am Coll Cardiol*
522 2014;64:851–860.
- 523 43. Virani SS, Brautbar A, Davis BC, Nambi V, Hoogeveen RC, Sharrett AR, Coresh J,
524 Mosley TH, Morrisett JD, Catellier DJ, Folsom AR, Boerwinkle E, Ballantyne CM.
525 Associations between lipoprotein(a) levels and cardiovascular outcomes in black and white
526 subjects: the Atherosclerosis Risk in Communities (ARIC) Study. *Circulation*
527 2012;125:241–249.
- 528 44. Gupta R, Vasisht S, Bahl VK, Wasir HS. Correlation of lipoprotein (a) to angiographically
529 defined coronary artery disease in Indians. *Int J Cardiol* 1996;57:265–270.
- 530 45. Mega JL, Stitzel NO, Smith JG, Chasman DI, Caulfield MJ, Devlin JJ, Nordio F, Hyde
531 CL, Cannon CP, Sacks FM, Poulter NR, Sever PS, Ridker PM, Braunwald E, Melander O,
532 Kathiresan S, Sabatine MS. Genetic risk, coronary heart disease events, and the clinical
533 benefit of statin therapy: an analysis of primary and secondary prevention trials. *Lancet*
534 2015;385:2264–2271.
- 535 46. Marston NA, Kamanu FK, Nordio F, Gurm Y, Roselli C, Sever PS, Pedersen TR, Keech
536 AC, Wang H, Lira Pineda A, Giugliano RP, Lubitz SA, Ellinor PT, Sabatine MS, Ruff CT.
537 Predicting Benefit From Evolocumab Therapy in Patients With Atherosclerotic Disease
538 Using a Genetic Risk Score: Results From the FOURIER Trial. *Circulation*. doi:
539 10.1161/CIRCULATIONAHA.119.043805.
- 540 47. Elliott J, Bodinier B, Bond TA, Chadeau-Hyam M, Evangelou E, Moons KGM, Dehghan
541 A, Muller DC, Elliott P, Tzoulaki I. Predictive accuracy of a polygenic risk score–enhanced
542 prediction model vs a clinical risk score for coronary artery disease. *JAMA* 2020;323:636–
543 645.
- 544 48. Fry A, Littlejohns TJ, Sudlow C, Doherty N, Adamska L, Sprosen T, Collins R, Allen NE.
545 Comparison of sociodemographic and health-related characteristics of UK Biobank
546 participants with those of the general population. *Am J Epidemiol* 2017;186:1026–1034.
- 547

548 **FIGURES**



549

550 **Figure 1. Genomic scores for coronary artery disease associate with traditional**

551 **cardiovascular risk factors.** The distribution of coronary artery disease genomic score

552 percentiles are displayed for traditional cardiovascular risk factors assessed at study enrollment

553 which include: (A) hypertension, (B) high low-density lipoprotein cholesterol (LDL-C \geq 4.9

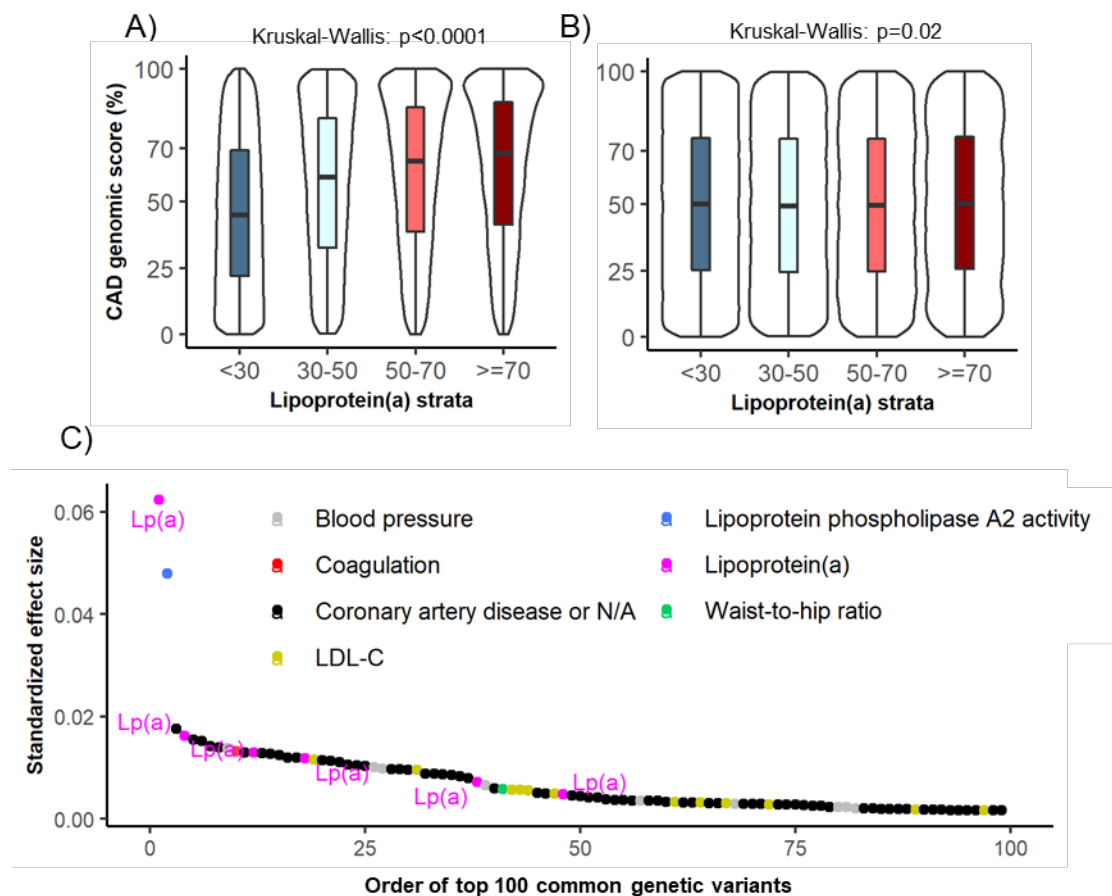
554 mmol/L), (C) diabetes mellitus, (D) obesity (body mass index \geq 30 kg/m²), (E) current smoking

555 status, and (F) a sum of the aforementioned risk factors. Boxplots display the median and

556 interquartile range. The boxplot's whiskers show the range and the accompanying density

557 distribution. *** p<0.001, **** p<0.0001.

558



559

560 **Figure 2. Elevated lipoprotein(a) is a major determinant of coronary artery disease**

561 **genomic risk scores.** The distribution of coronary artery disease genomic risk score percentiles

562 are displayed across strata of lipoprotein(a) levels calculated (A) with and (B) without genetic

563 variants in proximity to the *LPA* gene. Boxplots display the median and interquartile range. The

564 boxplot's whiskers show the range and the accompanying density distribution. (C) The

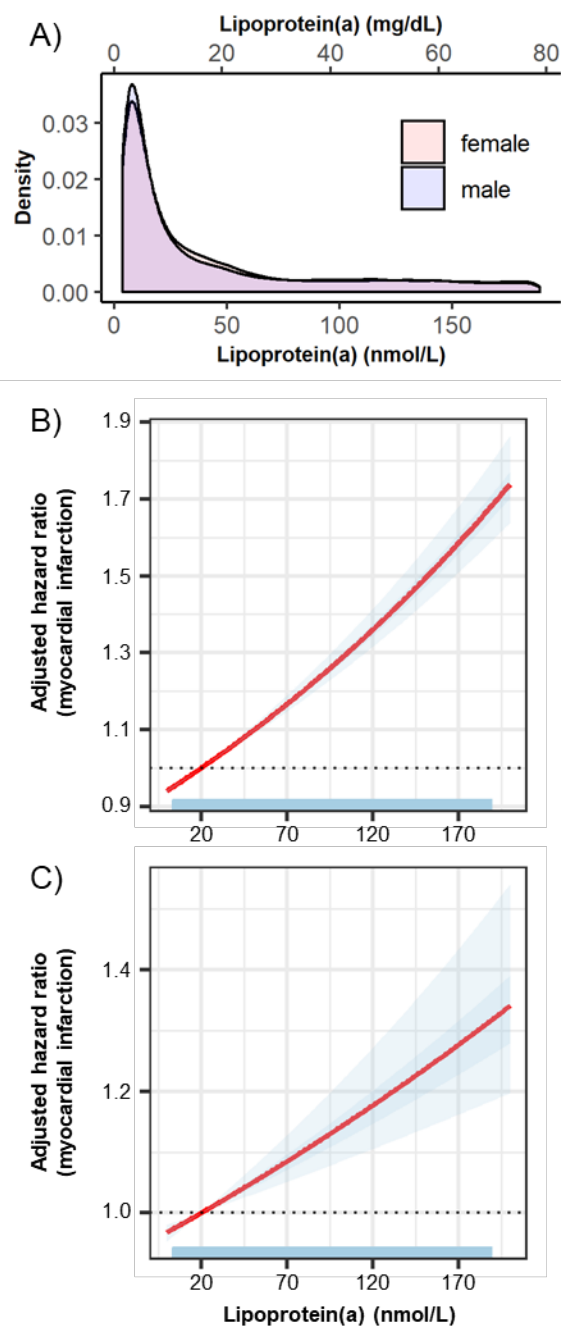
565 standardized effect sizes for the top 100 genetic variants used in calculating coronary artery

566 disease genomic risk scores are shown coloured by reported associations with traditional or

567 emerging cardiovascular risk factors in the NHGRI-EBI Genome-Wide Association Study

568 Catalog. Lipoprotein(a) [Lp(a)].

569



570

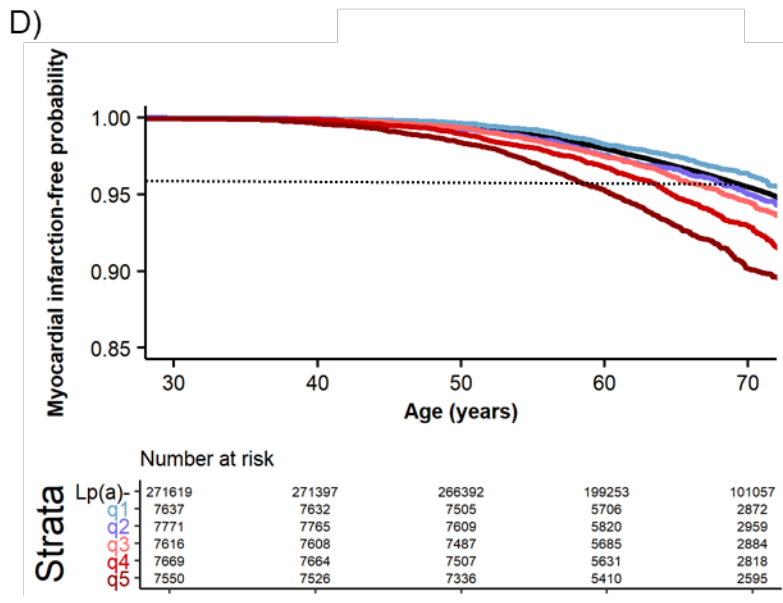
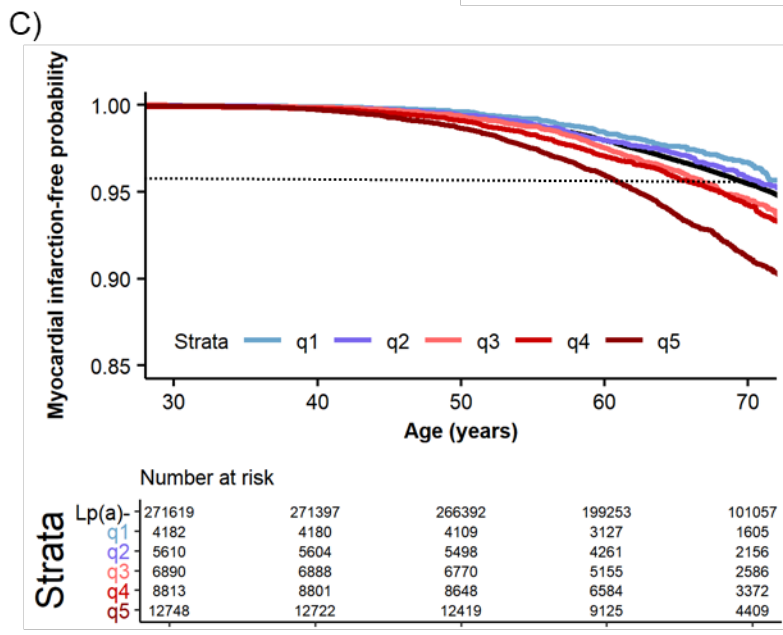
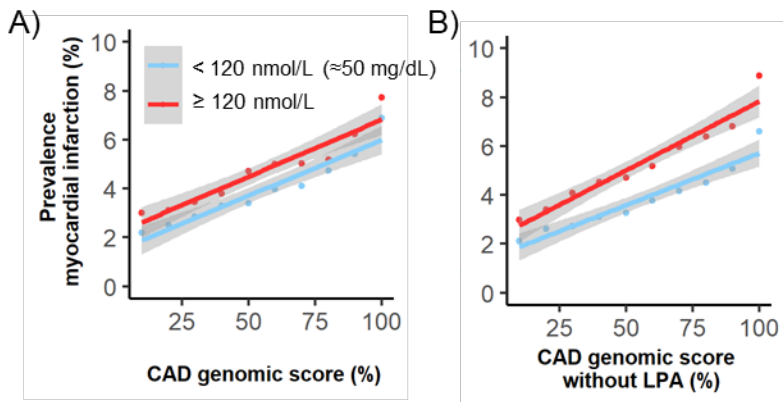
571 **Figure 3. Elevated lipoprotein(a) associates with increased risk of myocardial infarction.**

572 (A) The density distribution of lipoprotein(a) levels for UK Biobank participants of British white
573 ancestry is right-skewed. The risk of myocardial infarction versus continuous lipoprotein(a)

574 levels are shown for individuals of (B) male and (C) female sex. Hazard ratios were calculated

575 relative to the median lipoprotein(a) level in this population (20 nmol/L) and adjusted for the

576 first 4 components of genetic ancestry and genotyping array/batch. The darker and lighter blue
577 shading represent the standard error and 95% confidence interval, respectively.
578



579

580 **Figure 4. Coronary artery disease genomic risk scores are a modifier of risk of myocardial**
581 **infarction for individuals with elevated lipoprotein(a).** The prevalence of myocardial
582 infarction for each decile of coronary artery disease genomic risk score percentile is shown for
583 scores calculated (A) with and (B) without genetic variants in proximity to the *LPA*. Solid lines
584 depict linear regression analyses and gray shading indicate the associated 95% confidence
585 interval stratified by non-elevated versus elevated lipoprotein(a) levels. Time-to-first-event
586 analyses are displayed for risk of myocardial infarction events stratified by quintiles of coronary
587 artery disease genomic risk score percentile among individuals with elevated lipoprotein(a) (\geq
588 120 nmol/L) calculated (C) with and (D) without genetic variants in proximity to the *LPA* gene.
589 The solid black line depicts the risk of myocardial infarction among a reference group comprised
590 of all individuals with non-elevated lipoprotein(a) (Lp(a)-, < 120 nmol/L). The horizontal, dotted
591 black line depicts the myocardial infarction-free probability of the non-elevated lipoprotein(a)
592 reference group at 70 years-of-age.

593 **TABLES**

594 **Table 1. Enrollment characteristics and cardiovascular history of the study group.** High-
595 density lipoprotein cholesterol (HDL-C), interquartile range (IQR), low-density lipoprotein
596 cholesterol (LDL-C) standard deviation (SD).

Characteristic	Measurement	Values
n	no.	408896
Age	mean (SD)	56.9 (8.0)
Female sex	no. (%)	221082 (54.1)
Hypertension	no. (%) / n	110888 (27.2) / 408256
Severe hypercholesterolemia	no. (%) / n	31978 (8.2) / 389158
Diabetes mellitus	no. (%) / n	19773 (4.8) / 408003
Obesity	no. (%) / n	98879 (24.3) / 407600
Current smoker	no. (%) / n	41320 (10.1) / 407461
Total cholesterol (mmol/L)	median (IQR) / n	5.8 (1.55) / 389875
LDL-C (mmol/L)	median (IQR) / n	3.61 (1.16) / 389158
Triglycerides (mmol/L)	median (IQR) / n	1.50 (1.11) / 389567
HDL-C (mmol/L)	median (IQR) / n	1.40 (0.50) / 356840
Lipoprotein(a) (nmol/L)	median (IQR) / n	20.1 (50.88) / 310020
Hemoglobin A1c (mmol/mol)	median (IQR) / n	35.2 (5.1) / 389771
C-reactive protein (mg/L)	median (IQR) / n	1.33 (2.1) / 389036

597