

1 **Effectiveness of intervention strategies for Coronavirus Disease 2019 and an estimation of its**
2 **peak time**

3 Jinhua Pan^{1,2+}, Ye Yao³⁺, Zhixi Liu^{1,2+}, Mengying Li⁴, Ying Wang⁴, Weizhen Dong⁵, Haidong Kan^{2,6},
4 Weibing Wang^{1,2*}

5

6 ¹Department of Epidemiology, School of Public Health, Fudan University, Shanghai 200032, China

7 ²Key Laboratory of Public Health Safety of Ministry of Education, Fudan University, Shanghai 200032,

8 China

9 ³Department of Biostatistics, School of Public Health, Fudan University, Shanghai 200032, China

10 ⁴Department of Social Medicine, School of Public Health, Fudan University, Shanghai 200032, China

11 ⁵Department of Sociology and Legal Studies, University of Waterloo, 200 University Avenue West,

12 Waterloo, Ontario, N2L 3G1, Canada

13 ⁶Department of Environmental Health, School of Public Health, Fudan University, Shanghai 200032,

14 China

15

16 +These authors contributed equally to this work

17

18 * Corresponding authors: Dr. Weibing Wang

19 School of Public Health, Fudan University, Shanghai 200032, China

20 Email: wwb@fudan.edu.cn

21

22 **ABSTRACT**

23 The Coronavirus Disease 2019 (COVID-19) has been spreading rapidly to other provinces and
24 neighboring countries. Two mathematical SEIR models have been developed to simulate the current
25 epidemic situation in China. The basic reproductive number R_0 declined from 5.75 to 1.69 in Wuhan
26 and 6.22 to 1.67 in entire China from 19 January to 16 February 2020. Wuhan is estimated to have
27 reached a peak in the number of confirmed cases on 6 February 2020. The results also show that the
28 peak of new asymptomatic cases per day, new symptomatic infections and COVID-19 inpatients in
29 Wuhan occurred on February 6, February 3 and February 14. The number of confirmed cases would
30 decrease to less than 10 on March 27 in Wuhan and March 19 in the other parts of China. Five cities
31 with top risk index in China (except for Wuhan) are: Huanggang, Xiaogan, Jingzhou, Chongqing, and
32 Xiangyang city. We should take more strict isolation measures to end the epidemic ahead of time.

33
34
35
36

37 **BACKGROUND**

38 On 12 December 2019, a case of pneumonia of unknown etiology was detected in Wuhan City, Hubei
39 Province, China. On 31 December 2019, the outbreak was first reported to the World Health
40 Organization (WHO)¹. The novel coronavirus has thus been named ‘severe acute respiratory syndrome
41 coronavirus 2’ (SARS-CoV-2), while coronavirus disease associated with it is now referred to as
42 Coronavirus Disease 2019 (COVID-19). Most cases from the initial cluster had an epidemiological
43 association with a live animal market (Huanan Seafood Wholesale Market, henceforth referred to as the
44 Seafood Market), suggesting that the SARS-CoV-2 is animal-derived². However, the specific source of
45 the virus has not be identified yet.

46
47 The reported data show that while it is susceptible to people of all ages, the elderly and those with
48 underlying diseases³ tend to become more seriously ill once infected⁴. The outbreak of COVID-19
49 started at the time when hundreds of millions of Chinese people were on their way to their hometowns
50 or vacation destinations for the celebration of Chinese New Year, which aided the rapid spread of the
51 virus. As a result, a first-level response to major public health emergencies was launched in many areas
52 across the country. Wuhan, as the source of this outbreak, implemented travel ban on 23 January 2020⁵.
53 The Chinese government issued extension of order to shut down all non-essential companies, including
54 manufacturing plants, in Hubei Province until at least 20 February. As of 19 February, 74,282 cases of
55 COVID-19 (according to the applied case definition) have been reported, with 2,009 deaths reported⁶.

56
57 Since the epidemic outbreak, Wuhan has built two large hospitals with 2,600 beds to ease the sudden
58 increase of local peoples’ healthcare needs. Interventions have also been adjusted for treating milder
59 infections, whereby individuals have been shifted from home-based quarantines to centralized
60 quarantines at designated facilities (e.g. “square cabin” hospitals) in fixed sites, to efficiently monitor
61 and manage infections and prevent further outbreaks. As an intervention strategy, quarantine has been
62 implemented nationwide to prevent further city-to-city transmission. However, despite these measures,
63 the number of daily reported confirmed new cases is still very big.

64
65 Most people in China and those who may affected by the COVID-19 outbreak around the world are
66 eager to know when they can return to normal lives. The purpose of this study is to provide a scientific

67 projection on COVID-19 progression. The mathematical models could explain the epidemiological
68 patterns of infectious diseases and provide valuable information for the formulation and evaluation of
69 decision-making in disease preventive⁷. This study also estimated the basic and effective reproduction
70 number of the COVID-19, as well as the peak time and size of the epidemic with a dynamic model, and
71 simulate the impact of various intervention strategies, including travel restrictions and voluntary
72 quarantine.

73

74 **METHODS**

75 *Data source*

76 **Reported data.** Number of confirmed cases per day from 16th January 2020 to 16th February 2020^{8,9}
77 reported by the National Health Commission of the People's Republic of China (Only cases that tested
78 positive for nucleic acid were included), the Provincial Health Commissions of China, and government
79 reports from Hong Kong, Macao, Taiwan and other countries. Our data also include the daily numbers
80 of cured cases and deaths.

81

82 **Demographic data.** The demographic data is from the Statistical Yearbook of the National Bureau of
83 Statistics and from the Provincial Bureau of Statistics.

84

85 *The Models*

86 According to the current epidemic situation and the intervention strategies, the following SEIR
87 mathematical models were constructed. **The Wuhan Model** was based on the epidemic situation in
88 Wuhan from 16 January 2020 to 16 February 2020 and reflected the changes of the infections in the
89 city. It included seven population groups for the seven stages in the progression of the COVID-19.
90 According to the characteristics of the disease, when a susceptible person (Susceptible, S) effectively
91 encounters a person that is infected with the COVID-19, S would be infected with the virus (Exposed,
92 E) and would progress to infectious stage. The infected individual might exhibit symptomatic infection
93 (I) or asymptomatic infection (U), and might cause an infection of super-spreading event (I_{sse}); they
94 might get medical care (Treatment, T), and then mostly were shifted to the recovery group (Recovery,
95 R). Notably, the exposed individuals were infected, and had the ability to infect other susceptible
96 individuals. The I_{sse} means those infections can cause three or more generations of infection. The flow

97 diagram for this model is shown in Suppl. Fig 1. **The National Model (except for Wuhan region)** was
98 based on the Wuhan Model, aiming to predict the changes of the Coronavirus infection in other parts of
99 China; the flow diagram for this model is shown in Suppl. Fig 2.

100

101 Each model was based on three hypotheses: i) people who had visited or had a contact history with the
102 Seafood Wholesale Market were quarantined, and they did not travel to other parts of the country; ii) I,
103 E and U had the same ability to infect others, while those causing I_{sse} had a greater ability to do so; iii)
104 the daily confirmed cases was diagnosed in hospitals.

105

106 *Estimation of epidemiological parameters*

107 In the models, the detection rate was a proportion of confirmed cases from those who were infected. In
108 Wuhan model, we assumed that the detection rate from 16 to 25 January was 10%, the detection rate
109 has been improving since 25 January, with a fixed increment each day. Until the detection rate risen to
110 75%, the detection rate would not change with time any more. And the detection rate in National model
111 (except Wuhan) were from 0% to 75%, The same as quarantine rate in Wuhan (from 10% to 85%) and
112 National model (except Wuhan) (from 5% to 80%)

113

114 In the National Model, parameter a, b were the initial proportion of I group and I_{sse} group, respectively.
115 We used parameter a, b to recalculate the values of μ_1 (the proportion of U group), μ_2 (the proportion of
116 I group), μ_3 (the proportion of I_{sse} group). And finally fitted results showed that the proportion of
117 asymptomatic patients, μ_2 , in the population was $0.0828*a/(0.0828*a+b+a)$. The same as Wuhan model,
118 we used the least square estimate to estimate the μ_1 (the proportion of U group). In the National Model,
119 Wuhan data was used to calculate the p of various periods (p stands for the proportion of the latent
120 population in the outflow population of Wuhan).

121

122 In the National Model, we assumed that the quarantine rate was 5% on January 16, with a fixed
123 increment every day, and that this rate did not change with time once it reached 80%, after 20 days. We
124 used public data to calculate the proportions of the outflow and inflow population from January 16 to
125 January 23¹⁰, then allocated the number of daily outflows in Wuhan, based on this proportion. All
126 parameters used in the model are shown in *Table 1*.

127 According to the incubation proportion p of the daily outflow population from January 16 to January 23
128 estimated by the Wuhan model and the proportion of daily migration population from Wuhan to other
129 cities, we calculated the cumulative number of people entering each city in the incubation period within
130 8 days. The risk index is calculated by the product of the cumulative number of people in the
131 incubation period (until February 10, 2020) and the resident population of each city.

132

133 ***Basic reproductive number (R_0)***

134 The basic reproduction number R_0 represents the expected number of secondary cases produced by an
135 initial infectious individual, in a completely susceptible population. The calculation for determining R_0
136 was done by using the R software¹¹.

137

138 ***Data Availability***

139 The data in this article are all public data obtained from the National Health Commission of the
140 People's Republic of China.

141 ***Code availability***

142 The code is available from the corresponding author upon reasonable request.

143

144 **RESULTS**

145 ***Epidemic distribution of COVID-19 before and after the closure of Wuhan city***

146 Suppl. Figure 3. indicates that on 16 January 2020, the number of newly confirmed cases in China
147 occurred only in Hubei Province, and that the number of cases was limited. By 23 January 2020, the
148 number of newly confirmed cases continued to increase, and the infectious disease had spread all over
149 the country, except for Tibet, Qinghai, Guizhou, Ningxia, Shanxi, and Hebei. On 26 January 2020,
150 three days after Wuhan was locked down, however, the number of cases continued to increase.

151

152 ***Simulation of the Wuhan Model***

153 Diagnosis data (open source) from Wuhan for the COVID-19 from January 16, 2020 to February 16,
154 2020 were used for the modeling. Figure 1 shows that the Wuhan Model fits well the trend of the
155 number of recent confirmed cases in Wuhan: it predicts that the peak of confirmed cases in Wuhan will
156 be 1,718, and will occur around February 6. The peak of the number of asymptomatic infections

157 appears on February 6, while the number of I_{ssc} and symptomatic infections would reach their maximal
158 numbers on February 3, with peak daily number for the three types of infections being 1,017, 419 and
159 12,418, respectively (Figure 2). And the number of confirmed cases would reach the single digit on
160 March 27 in Wuhan.

161

162 We established models for various scenarios, as shown in Suppl. Figure 4. The smaller the outflow of
163 the population, the greater the daily number of new confirmed cases and the real time inpatients in
164 Wuhan. Thus, if the outflow of the population is 6 million, the daily number of newly confirmed cases
165 in Wuhan would reach 860. Similarly, a dynamic model was applied to analyze the daily increase in the
166 number of newly confirmed cases in Wuhan. Suppl. Figure 5 shows that the higher the early detection
167 rate, the greater the number of confirmed cases, and the earlier the peak appears.

168

169 When the outflow population is kept constant and the quarantine rate increases gradually, the number
170 of newly confirmed cases decreases. To predict the impact of various quarantine rates, we set isolate
171 rate=10% as the baseline number of cases; when setting isolate rate=20%, it reduced to 1,159,720
172 inpatients cases on the day of peak numbers, a decrease of 11.18%; isolate rate=30% would reduce the
173 number of inpatients cases to 933,070 (Figure 3).

174

175 In the Wuhan Model, we set a function related to the parameter m and time t as follows: before January
176 23, 2020, m infected people contacted the Seafood Wholesale Market, while the zoonotic infective
177 cases no longer occurred thereafter due to the closure of that Market. The Model simulated various
178 scenarios to assess the impact on the epidemic situation of an increase in the force of infection by 1, 1.5,
179 2, 2.5, and 3 times. By predicting the impact of the number of zoonotic infective cases, we set 43 as the
180 number of baseline cases. Doubling the number m (to 86) increased the number of cases by 1408 on the
181 peak day, and enhanced the confirmed cases by approximately 9.10% on that day, while augmenting m
182 to triple the baseline increased the confirmed cases by approximately 22.58% (Suppl. Figure 6).

183

184 ***Simulation of the National Model (except Wuhan)***

185 Figure 4 shows the fitting of the nationwide mathematical modeling. Our Model rationally fitted the
186 trend of the daily numbers of newly confirmed cases in other parts of China, and predicted that the

187 peak number of confirmed cases would occur around February 3, while the highest number of
188 confirmed cases would reach 1,756 per day. The peak arrival time of the simulation data was consistent
189 with that of the real data.

190

191 Figure 5 shows that the peaks of asymptomatic infections and I_{sse} , and the real time inpatients and
192 symptomatic infections would appear on January 30 and January 29, February 10 and January 29,
193 respectively, with peak number 766, 438, 14,008 and 13,006, respectively. The COVID-19 cases would
194 gradually disappear by the end of April. The number of confirmed cases would reach the single digit on
195 March 19 in the entire country (not including the Wuhan area).

196

197 Suppl. Figure 7 shows the positive correlation between population inflow and case numbers per day.
198 When the population inflow is 6 million, the number of new cases per day reaches a peak of 1,838,
199 while inflow become 3 million, the number would be 1,539. An increase of 16.2% over the peak would
200 occur when the population inflow was 6 million. We also found that the change in the inflow
201 population was relatively insensitive to the population flow.

202

203 By predicting the impact of various quarantine rates on the number of cases each day, we observed that
204 the peak decreased gradually, and the number of new and cumulative confirmed cases per day had a
205 clear downward trend with the gradual increase of the quarantine rate; when the inflow population
206 remained constant, every 5% increase in quarantine rate reduced the numbers of the cumulative
207 confirmed cases, on average, by 313 cases on the peak day. Furthermore, setting the quarantine rate at
208 45% would reduce the number by 939 cases on the peak day compared to when the quarantine rate was
209 set at 30% (Figure 6). When the detection rate gradually increased, the peak gradually moved forward,
210 and the number of newly confirmed patients showed a significant downward trend. Also, that every 0.2
211 increase in the detection rate leads to an advance of 1-2 days at the peak (Suppl. Figure 8).

212

213 Figure 7 shows that the risk index of COVID-19 risk spread by the outflow population of Wuhan to
214 different cities. The top 5 cities ranked by the risk index are Huanggang, Xiaogan, Jingzhou,
215 Chongqing and Xianyang. And The number of incubators from Wuhan to these cities on the 16th to the
216 23rd, 2020 were 474, 513, 249, and 40, 145 cases, respectively. The risk index of 15 cities was

217 consistent with the actual cumulative number of confirmed cases ($r=0.88$, $p=3.8 \times 10^{-8}$, and the actual
218 cumulative number of confirmed cases were calculated until February 10, 2020).

219

220 We have estimated the basic reproduction number R_0 from 19 January to 16 February 2020 in Wuhan
221 and the whole country (except Wuhan). Figure10 showed that R_0 declined with time as well as with
222 implementation of different policies, from 5.75 to on 19 January to 1.69 on 16 February in Wuhan, and
223 from 6.22 to 1.67 in the entire country (not including the Wuhan area)

224

225 **DISCUSSION**

226 Based on the COVID-19 cases data from 16 January 2020 to 16 February 2020, the data showed that
227 R_0 declined with time as well as with implementation of different policies, from 5.75 to 1.69 in Wuhan
228 and from 6.22 to 1.67 in the entire country (except Wuhan), which was consistent with other studies^{12,13}
229 but we first estimate the trends. Although R_0 for the COVID-19 was declined on February 16 in China,
230 it was still higher in China (1.66; 95% CI 1.86–1.46), compared to the range of the R_0 for SARS
231 epidemic^{12,14}, and for MERS^{12,14}. On the other hand, such a high number for R_0 was consistent with the
232 opinion that the virus had gone through at least three-to-four generations of transmission and suggested
233 that there might be a possibility of aerosol transmission as SARS did¹⁵, though whether there was
234 aerosol transmission needs further investigation.

235

236 Nowcasting and forecasting are of crucial importance for public health planning and control, both
237 domestically and internationally. Our models evaluated the epidemic situation in Wuhan and in other
238 parts of China separately, with the consideration of various intervention measures. The results of our
239 modeling suggest that Wuhan have reached a peak in the number of confirmed cases around 6 February,
240 with the maximum number of confirmed cases at 1,718 per day, while the peak of the number of
241 confirmed individuals in the whole country has already occurred around February 3 and will reach
242 single digit on March 27 in Wuhan and March 19 in in the whole country except Wuhan. In addition,
243 our study predicts that the number of inpatients in Wuhan reached a peak of 13,030 on 14 February, and
244 begin to decline, which can provide certain basis for hospital bed arrangement.

245

246 Model fitting for the newly confirmed cases per day gave a number that was lower than the actual

247 number, and the peak number of newly confirmed infected cases per day in the model fitting of the
248 entire country except Wuhan was also lower than the actual number – these discrepancies may be due
249 to underreporting, and delayed diagnosis during the early stages of the epidemic. The underreporting
250 and insufficient diagnosis might be due to less nucleic acid test kits, false negative result of the testing¹⁶,
251 and asymptomatic patients³. Due to the recent change of more availability of test kits and greater efforts
252 of various government departments, the detection capacity has continuously improved, leading to a
253 sharp rise in patients' numbers compared to the models' estimates.

254

255 Current interventions, including extended vacations and self-quarantine at home, aim to isolate
256 high-risk populations. We have analyzed the different quarantine rates, to determine how this variation
257 changes the epidemic trend. Assuming that the major cities in the country have not taken the first level
258 response, the isolation rate is not as high as it is currently, we reduced the quarantine rate and simulate
259 the situation that if the country has not taken the first level response in Wuhan. When the quarantine
260 rate was 10%, the peak value of newly confirmed cases would be 1,305,713 in Wuhan; when the
261 quarantine rates became 20%, 30% and 40%, the peak value of newly confirmed cases would reach
262 1,159,720, 933,070 and 588,814 in Wuhan respectively. The scenario suggested that Wuhan 's
263 mandatory isolation and first-level response had played a great role in the stop of epidemic spreading.
264 Many cities in the country had started the first level response. We reduce the isolation rate in the
265 National model to the scenario that the first level response was not launched. When the quarantine rates
266 are 30%, 35%, 40%, 45%, the peak value of newly confirmed cases will reach 3,532, 3,151, 2,753, and
267 2,593 in the entire country. And if the quarantine rate is less than 30%, the new confirmed cases will
268 grow explosively. Comparing to the current situation with a maximal quarantine rate of 80% in the
269 National Model, it adds up 837 confirmed cases each day at least, which shows the quarantine
270 intervention and first level response measures taken by some cities in China are indispensable policies
271 and show positive effect on the control of the COVID-19. The Return-to-Work tide is approaching,
272 especially in major cities like Shanghai and Shenzhen, upgraded measures (*e.g.*, escalatory quarantine,
273 mask wearing when going out, and sit apart when taking vehicles) will be particularly crucial for the
274 blockage of the COVID-19. We assumed that the isolation rate in Wuhan will reach 85% and 80% in
275 the whole country except Wuhan. However, if we further improve the isolation rate, the epidemic will
276 end ahead of time.

277

278 A proportion of the first generation of infected people had visited the Seafood Market in Wuhan⁴. Due
279 to the existence of asymptomatic infections and the possibility of missed diagnoses, rather than
280 analyzing just the number of people who have been to the Seafood Market, we have instead analyzed
281 the number of people who have contact history with the Seafood Market; when this alternative situation
282 is taken into consideration, the greater the number of people who visited the Seafood Market in the
283 early stage the bigger is the number of people infected, with a higher peak value. However, this
284 relationship is not sensitive. While people at the Market were found and isolated and were no longer
285 contagious, the scale of transmission of this first generation of virus might be larger than that of other
286 infected individuals.

287

288 This study primarily focused on the situation that can be judged from the appearance of some infection
289 symptoms, such as fever, dry cough, etc¹⁷. According to the latest research results of Dr. Zhong
290 Nanshan, they proved the presence of another type of infected people – those who are asymptomatic
291 infections at COVID-19 diagnosis³. According to the results of the Wuhan Model and National
292 model(excluded Wuhan), there are indeed asymptomatic cases with peak values 1,071 in Wuhan (766
293 in the other parts of China) and I_{sse} cases with peak values 419 cases in Wuhan (438 in the other parts
294 of China), asymptomatic cases are hidden virus carrier, finding them is extremely difficult but this
295 population will increase in number rapidly, which is particularly challenging in terms of prevention and
296 control. The only effective intervention for asymptotically infected people is to prevent close
297 personal contacts. Concurrently, the number of real-time COVID-19 inpatients in Wuhan has reached a
298 peak of 13,030 on February 14 before it decreases (14,008 on February 10 in the other parts of China),
299 which can provide some basis for the arrangement of hospital beds. The model further shows that the
300 COVID-19 cases will gradually disappear by the end of April 2020, both in Wuhan and the other parts
301 of China. The number of confirmed cases would decrease to less than 10 on March 27 in Wuhan and
302 March 19 in the other parts of China.

303

304 During the current epidemic outbreak, the public should be reminded not only to practice at-home
305 quarantine, but also to pay attention to personal protection, *e.g.* wearing masks, and reducing
306 communicating with other people in person, especially after the stage of high level response (travel

307 restricts, the postponement of school semesters, *etc.*) . As the potential long incubation period of the
308 COVID-19, the effects of public health measures, such as to place someone and his/her close contacts
309 under medical quarantine at both the hospital and community, would also depend on the swift and
310 accurate diagnosis – any delay will make the public to pay a high cost¹⁸.

311

312 Our study has several limitations. First, there is no enough data to provide accurate information about
313 quarantine rates and detection rates at each stage of the epidemic, as the denominator could also be
314 underestimated due to limited medical source for treatment, false positive testing kits. However, we
315 have adjusted for the initial values of the parameters in the models based on the available survey data.
316 Second, based on the changes in prevention and control modes and societal efforts at each stage, we
317 have estimated the functions of the quarantine and detection rates in relation to time, in order to
318 simulate the actual conditions as closely as possible. In addition, we were unable to obtain some
319 relevant data that may be very important to the study, such as the exposure and possible infection rates
320 of healthcare workers nationwide¹⁹. Instead, we use the estimation for exposure and infection rate of
321 that population from a survey (unpublished data) based on a big specialized hospital in Wuhan.

322

323

324 **CONCLUSIONS**

325 China's prevention and control measures have made significant inroads into controlling the epidemic of
326 COVID-19, but the complete control has not yet to be achieved. This study found self-quarantine at
327 home should be strictly observed in the future, and that the quarantine level to be maintained at a
328 relatively high level to prevent the possibility of a second outbreak of the epidemic. When the accuracy
329 and sensitivity has been improved substantially, *e.g.*, by using CT scan instead of depending only on
330 testing kits, the continued success may still rely on the community screening in order not to miss any
331 and effectively cut the transmission chain from those with mild symptoms. Furthermore, professional
332 medical care personnel should supervise centralized quarantine at certain quarantine sites, to better
333 monitor and manage infected peoples and prevent further expansion of infection and improve the health
334 of the patients. Given the high rate of infectivity of this new coronavirus, and there is still a possibility
335 of the virus being spread globally, the countries other China also need to mobilize enough medical
336 supplies to deal with this massive outbreak based on local risk assessments.

337

338

339

340 **Author contributions**

341 J.P., Z.L., Y.Y. and W.W. designed the study. J.P., Z.L., Y.Y. M.L, and Y.W. collected COVID-19
342 incidence data and gained insight into the biology and natural history of the virus. J.P., Z.L., H.K. and
343 W.W. developed the model and obtained the related parameters. Y.Y. revised and improved the model,
344 W.D. revised the language, J.P., Z.L., and M.L drafted the manuscript. All authors critically reviewed
345 and approved the final version of the manuscript.

346

347 **Acknowledgments**

348 We thank Dr. Yang Liu from London School of Hygiene & Tropical Medicine, Faculty of
349 Epidemiology and Population Health, Department of Infectious Disease Epidemiology for modeling
350 support. This study is sponsored by the Bill & Melinda Gates Foundation (OPP1216424) and Shanghai
351 Sailing Program (Grant No. 17YF142600).

352

353 **Competing interests**

354 The authors declare no competing interests.

355

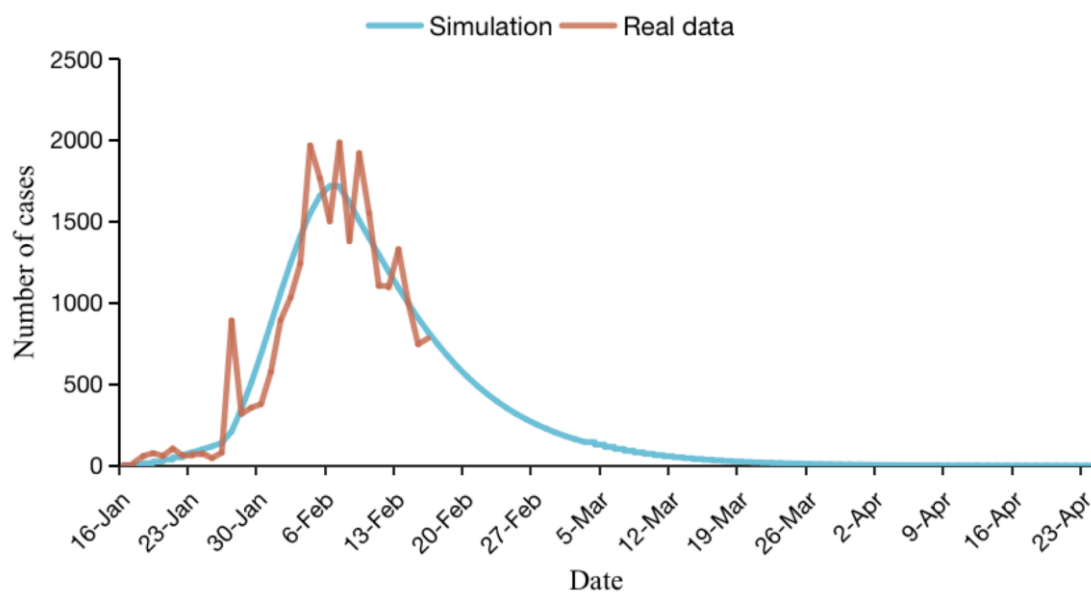
356
357

358
359
360
361
362
363
364
365
366
367
368
369
370
371
372
373
374
375
376
377
378
379
380
381
382
383
384
385
386
387
388
389
390
391
392
393
394
395
396
397
398
399
400
401
402
403
404
405

References

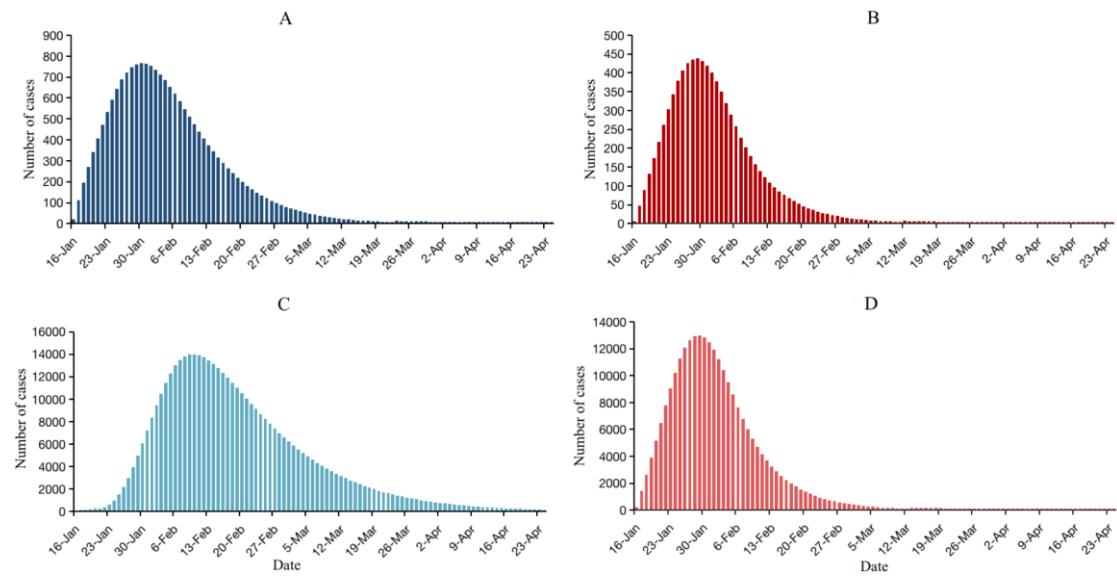
1. World Health Organization. Novel Coronavirus—China, Disease outbreak news : Update. <https://www.who.int/csr/don/12-january-2020-novel-coronavirus-china/en/> [Accessed 28 Jan 2020].
2. Wuhan municipal health commission. <http://wjw.wh.gov.cn/front/web/showDetail/2020011109035> [Accessed 28 Jan 2020].
3. Guan W-j, Ni Z-y, Hu Y, et al. Clinical characteristics of 2019 novel coronavirus infection in China. *medRxiv* 2020: 2020.02.06.20020974.
4. Chen N, Zhou M, Dong X, et al. Epidemiological and clinical characteristics of 99 cases of 2019 novel coronavirus pneumonia in Wuhan, China: a descriptive study. *Lancet (London, England)* 2020.
5. Xinhua News. <http://www.nhc.gov.cn/xcs/s3574/202002/5476aaf6e16e4e79abe7d12a317b59fc.shtml>. [Accessed 28 Jan 2020].
6. World Health Organization. Novel Coronavirus (2019-nCoV) situation reports. https://www.who.int/docs/default-source/coronaviruse/situation-reports/20200206-sitrep-17-n-cov.pdf?sfvrsn=17f0dca_2 [Accessed 28 Jan 2020].
7. Rock K, Brand S, Moir J, Keeling MJ. Dynamics of infectious diseases. *Reports on progress in physics Physical Society (Great Britain)* 2014; **77**(2): 026602.
8. National Health Commission of the People's Republic of China. http://www.nhc.gov.cn/xcs/xxgzbd/gzbd_index.shtml [Accessed 28 Jan 2020].
9. Health Commission of Hubei Province <http://wjw.hubei.gov.cn/bmdt/ztlz/fkxxgzbdgrfyq/> [Accessed 28 Jan 2020].
10. Baidu migration map. <http://qianxi.baidu.com>. [Accessed 28 Jan 2020].
11. Aaron A. King. Introduction to model parameter estimation(October 30, 2017). Available at: <http://creativecommons.org/licenses/by-nc/3.0/>.
12. Wu JT, Leung K, Leung GM. Nowcasting and forecasting the potential domestic and international spread of the 2019-nCoV outbreak originating in Wuhan, China: a modelling study. *Lancet (London, England)* 2020.
13. Li Q, Guan X, Wu P, et al. Early Transmission Dynamics in Wuhan, China, of Novel Coronavirus-Infected Pneumonia. *The New England journal of medicine* 2020.
14. Breban R, Riou J, Fontanet A. Interhuman transmissibility of Middle East respiratory syndrome coronavirus: estimation of pandemic risk. *Lancet (London, England)* 2013; **382**(9893): 694-9.
15. Cheng VCC, Wong SC, To KKW, Ho PL, Yuen KY. Preparedness and proactive infection control measures against the emerging Wuhan coronavirus pneumonia in China. *The Journal of hospital infection* 2020.
16. Jin YH, Cai L, Cheng ZS, et al. A rapid advice guideline for the diagnosis and treatment of 2019 novel coronavirus (2019-nCoV) infected pneumonia (standard version). *Military Medical Research* 2020; **7**(1): 4.
17. Wang D, Hu B, Hu C, et al. Clinical Characteristics of 138 Hospitalized Patients With 2019 Novel Coronavirus-Infected Pneumonia in Wuhan, China. *Jama* 2020.
18. Dennis Lo YM, Chiu RWK. Racing towards the development of diagnostics for a novel coronavirus (2019-nCoV). *Clinical chemistry* 2020.
19. The L. Emerging understandings of 2019-nCoV. *Lancet (London, England)* 2020; **395**(10221): 311.

406
407



408
409
410
411
412

Figure 1. Prediction of the number of new confirmed cases per day.
The brown line shows the actual number of newly confirmed cases every day in Wuhan until February 16; the blue line shows the results of model fitting.



413

414 **Figure 2. Estimation and prediction of asymptomatic infections, symptomatic infections and super**
415 **spreading event infections in Wuhan city.**

416 **A:** Estimation and prediction of daily asymptomatic infections in Wuhan. **B:** Estimation and prediction of daily
417 super-spreading event in Wuhan. **C:** Estimation and prediction of the real time inpatients. **D:** Estimation and
418 prediction of the occurrence of new infections per day. The time scale predicted by the model is from 16 February
419 to 24 April 2020.

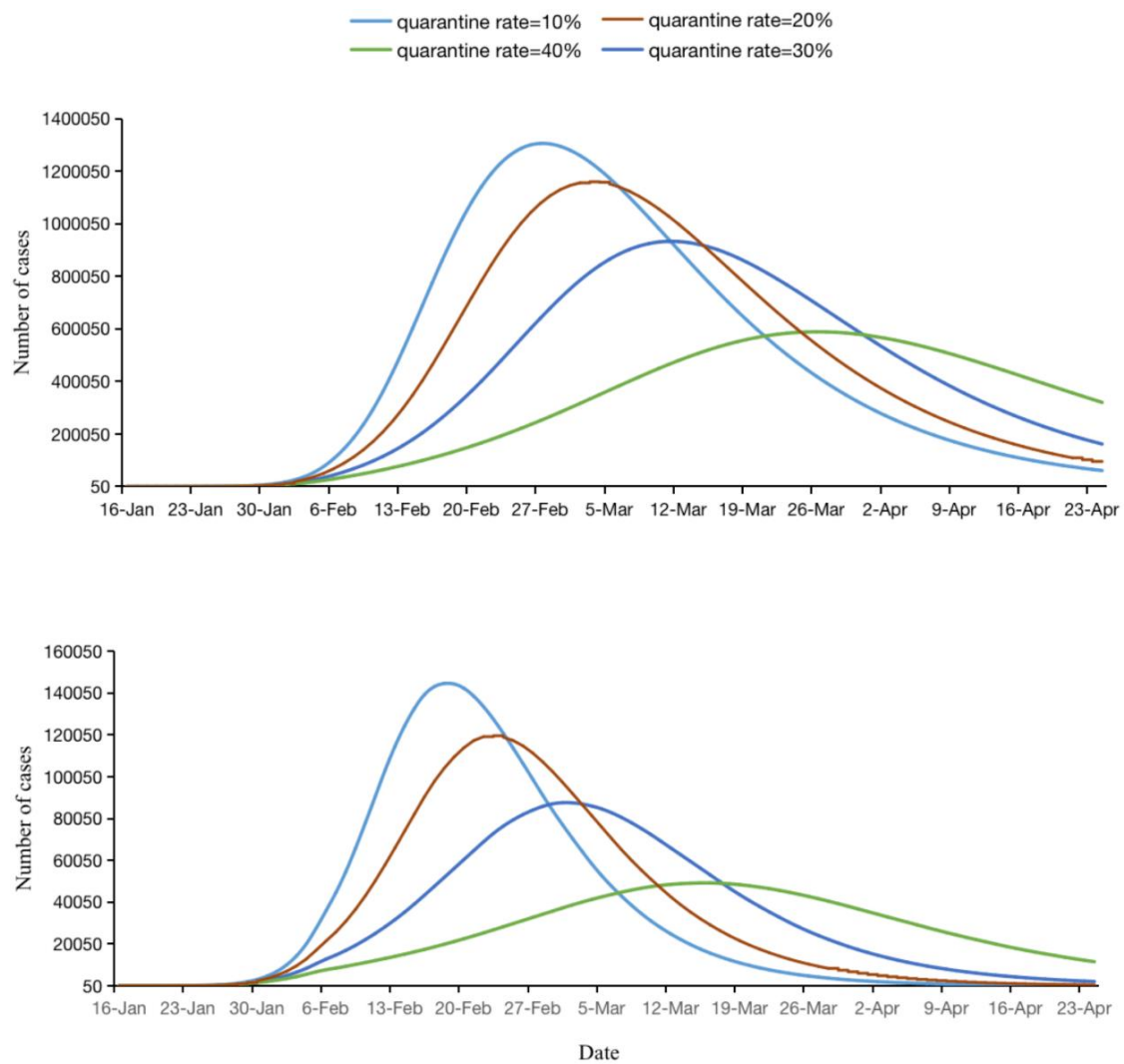
420

421

422

423

424



425

426

Figure 3. Epidemic forecasts for Wuhan under different scenarios of quarantine rate.

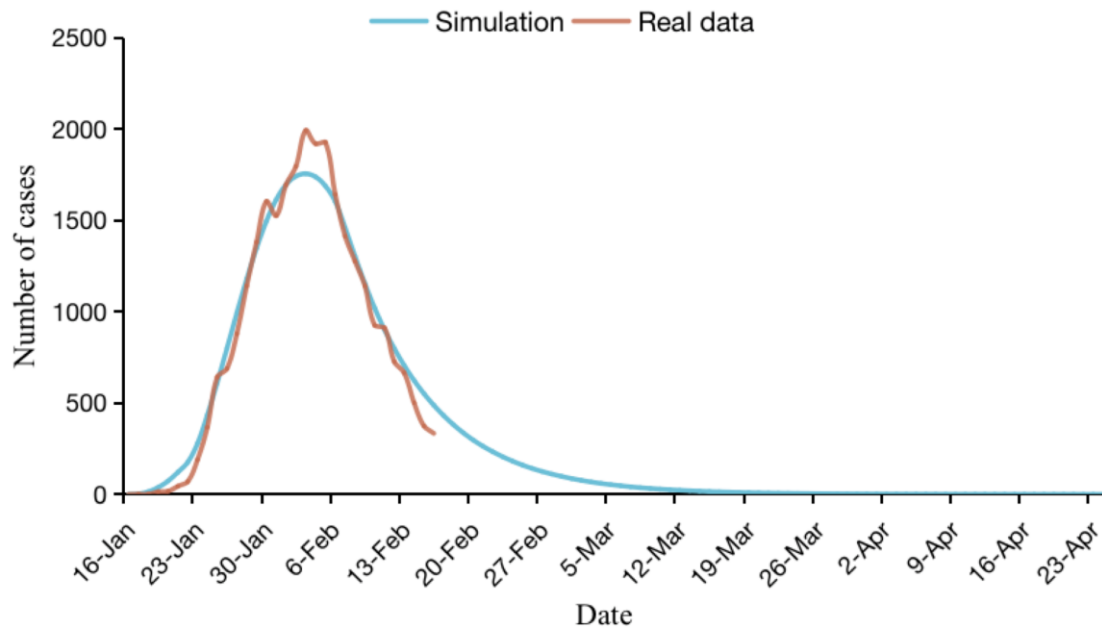
427

A and B predict the impact of different various quarantine rates on the real time inpatients and the number of newly confirmed cases per day.

429

430

431



432

433 **Figure 4. Estimation and prediction of newly confirmed cases in China (except Wuhan).**

434 The brown line shows the actual number of newly confirmed cases each day in the cities in China
435 (except Wuhan). The blue line shows the result of model fitting, with the model applied to predict the
436 number until 24 April 2020.

437

438

439

440

441

442

443

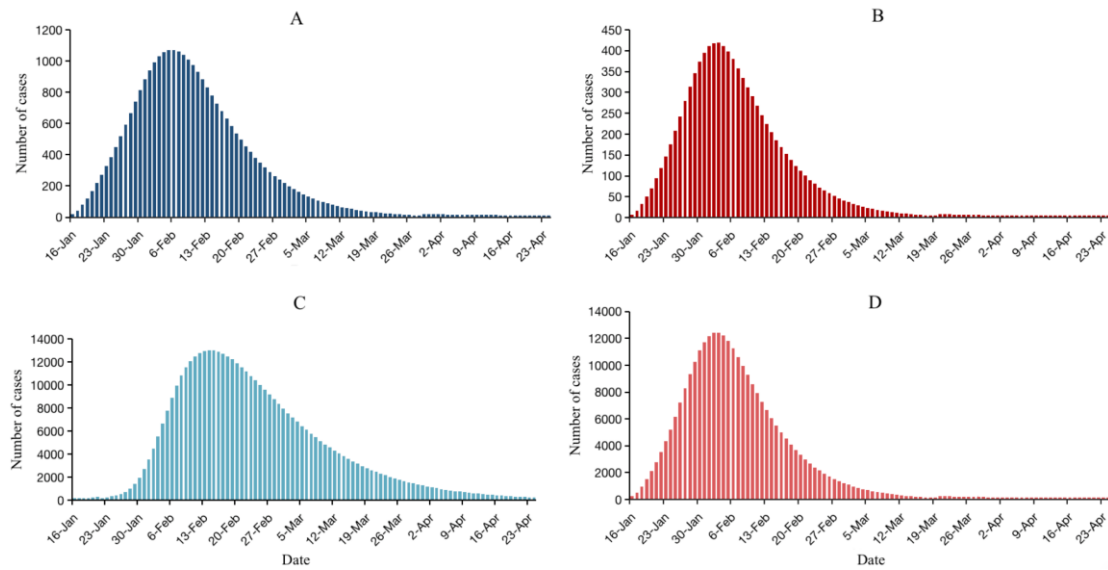
444

445

446

447

448



449

450 **Figure 5. Estimation and prediction of asymptomatic infections, super-spreading event infections,**
451 **total hospital cases and symptomatic infections in China (except Wuhan).**

452 **A:** Estimation and prediction of new asymptomatic infections per day in China (except Wuhan). **B:**
453 Estimation and prediction of new super-spreading event infections per day in China (except Wuhan). **C:**
454 Estimation and prediction of the real time inpatients. **D:** Estimation and prediction of new infections
455 per day among people in China (except Wuhan).

456

457

458

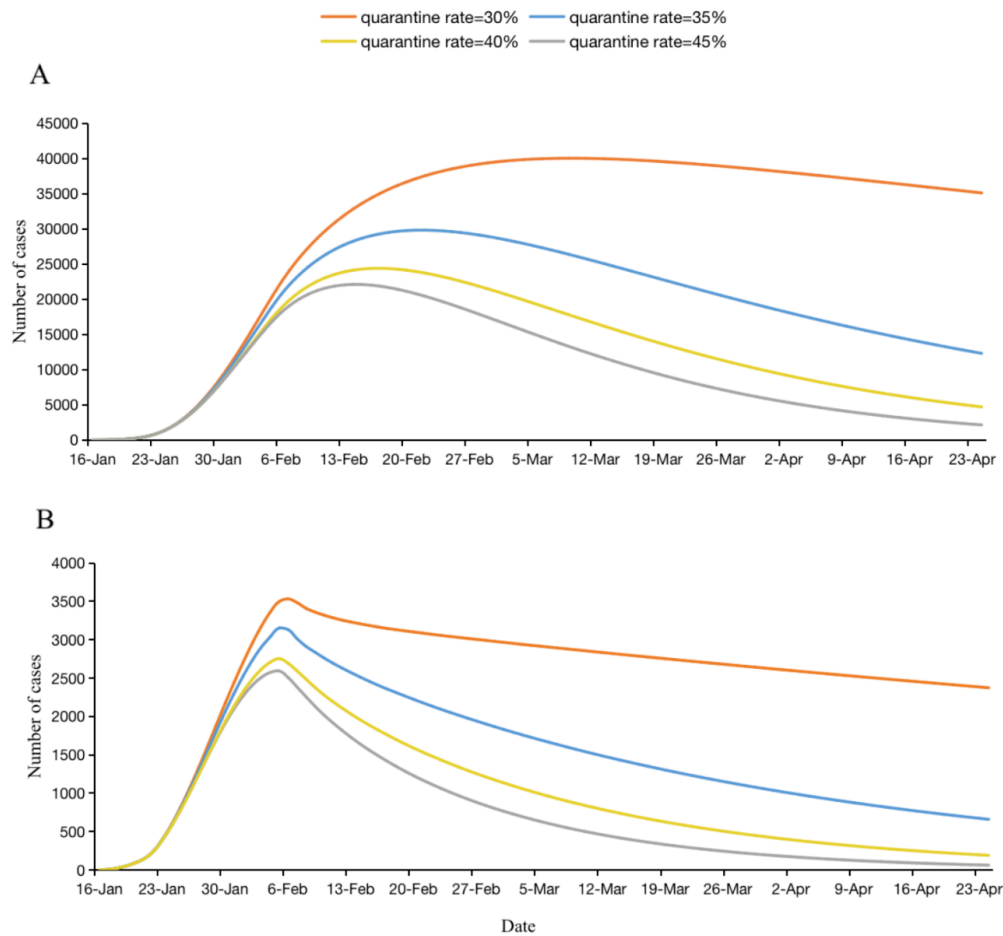
459

460

461

462

463



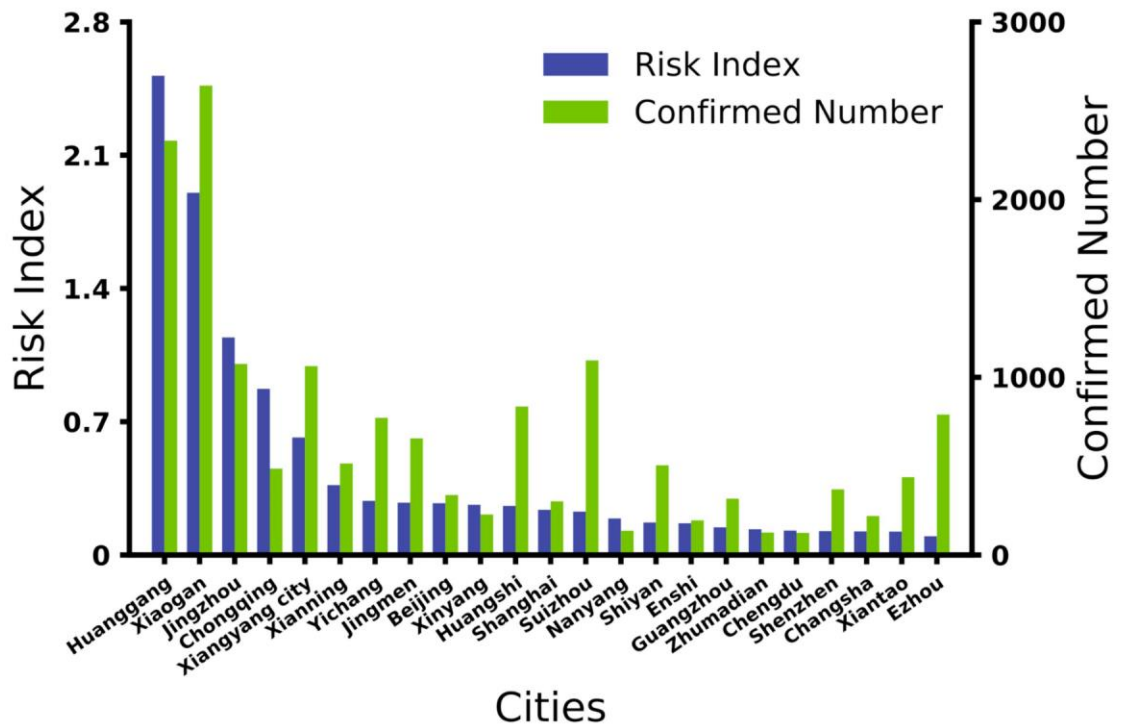
464

465 **Figure 6. Epidemic forecasts for China (except Wuhan) under different scenarios of quarantine**
466 **rate.**

467 **A and B** are used to predict the impact of different quarantine rates on real time inpatients and new
468 confirmed cases per day using national (except Wuhan) models.

469

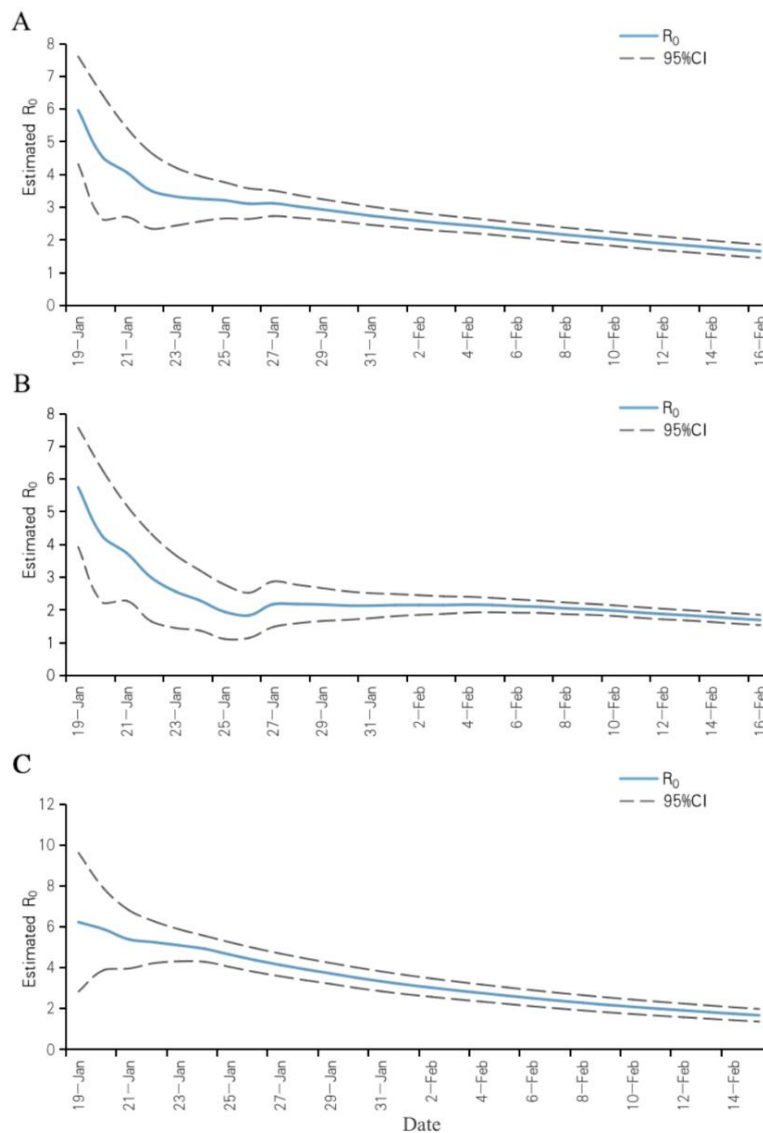
470



471

472 **Figure 7. Comparison of the risk index and cumulative number of confirmed cases.**

473 According to the incubation proportion p of the daily outflow population from January 16 to January 23
 474 estimated by the Wuhan model and the proportion of daily migration population from Wuhan to other
 475 cities, we calculated the cumulative number of people entering each city in the incubation period within
 476 8 days. The risk index is calculated by the product of the cumulative number of people in the
 477 incubation period and the resident population of each city. And we compare the risk index with the
 478 cumulative number of confirmed cases ($r=0.88$, $p=3.8 \times 10^{-8}$, and the actual cumulative number of
 479 confirmed cases are calculated until February 10, 2020).
 480



481

482 **Figure 8. The change of basic reproduction number R_0 .**

483 The blue line in the figure represents the estimated value of R_0 and its change with time, and the gray

484 line represents the 95% confidence interval of R_0 . **A:** R_0 and its change with time in China. **B:** R_0 and

485 its change with time in Wuhan. **C:** R_0 and its change with time in the entire country except Wuhan

486

487

488

489

490

491

492

493

494

495

496

497 **Supplementary information**

498

499

500

Supply. Table 1. Parameters of Wuhan dynamic model

Parameter	Description	Value	Source
d	Transition rate of latent individuals to infections	1/7	Public data
γ_1	Transition rate from hospitalization to recovery	1/14	Public data
γ_2	Transition rate of asymptotical infections to recovery	1/7	Assumed
β_1	Transmission coefficient of I, U, and E	0.4098	Least square method
β_2	Transmission coefficient of I_{sse}	1.0245	Least square method
β_3	Transmission coefficient of South China Seafood Market	3.8369	Least square method
λ	Transition rate of infectious individuals to quarantined infections	1/4.95	Public data
μ_1	The proportion of U compartment	0.08	Least square method
μ_2	The proportion of I compartment	0.89	Public data
μ_3	The proportion of I_{sse} compartment	0.03	Public data
Rate_quarantine(t)	Quarantined rate of individuals	Change with time	Assumed
Rate_detection(t)	detected rate of infection individuals	Change with time	Assumed
Rate_emigration(t)	emigrated rate of susceptible individuals and exposed individuals	Change with time	Assumed
α_1	Death rate of COVID-19 cases in Wuhan city per day	0.0530	Reported data ^{10,11}

501

502

503

504

505

506

507

508

509

510

511

512

513

514

515

516

517

518

519

520

521

522

523

524

525

526

527

528

529

530

531

532

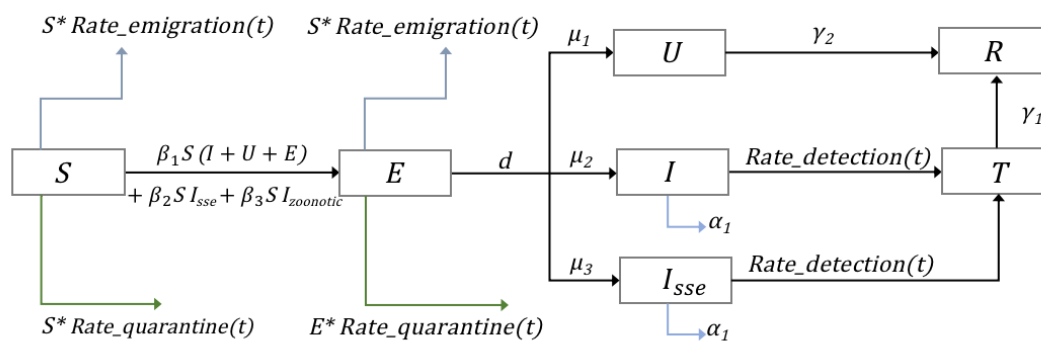
533

534
535
536
537
538
539
540

Supply. Table 2. Parameters of National dynamic model except Wuhan

Parameter	Description	Value	Source
d	Transition rate of latent individuals to infections	1/7	Public data
γ_1	Transition rate from hospitalization to recovery	1/14	Public data
γ_2	Transition rate of asymptotical infections to recovery	1/7	Assumed
β_1	Transmission coefficient of I, U, and E	0.1604	Least square method
β_2	Transmission coefficient of I_{sse}	0.401	Least square method
λ	Transition rate of infectious individuals to quarantined infections	1/3.8	Public data
μ_1	The proportion of U compartment	0.0742	Least square method
μ_2	The proportion of I compartment	0.8957	Public data
μ_3	The proportion of I_{sse} compartment	0.0301	Public data
Rate_quarantine(t)	Quarantined rate of individuals	Change with time	Assumed
Rate_detection(t)	detected rate of infection individuals	Change with time	Assumed
Rate_emigration(t)	emigrated rate of susceptible individuals and exposed individuals	Change with time	Assumed
α_2	Death rate of COVID-19 cases in cities of China (excepted Wuhan city) per day	0.0081	Reported data ^{10,11}

541
542
543
544
545
546
547
548
549
550
551
552
553
554
555
556
557

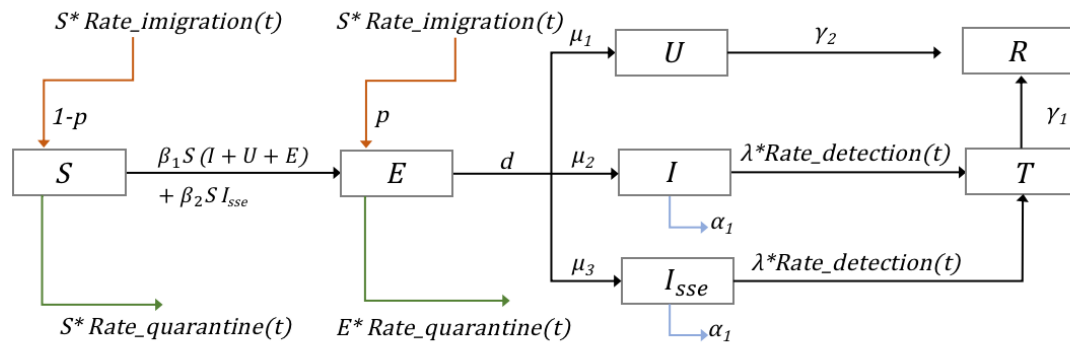


558
559
560
561
562
563
564
565
566
567
568
569
570
571
572
573
574
575
576
577
578
579
580
581
582
583
584
585
586
587
588

Suppl. Figure 1. Flow diagram of the Coronavirus Disease 2019 model for Wuhan.

589

590



591

592

Suppl. Figure 2. Flow diagram of the Coronavirus Disease 2019 model for the Nation (except Wuhan)

593

594

595

596

597

598

599

600

601

602

603

604

605

606

607

608

609

610

611

612

613

614

615

616

617

618

619

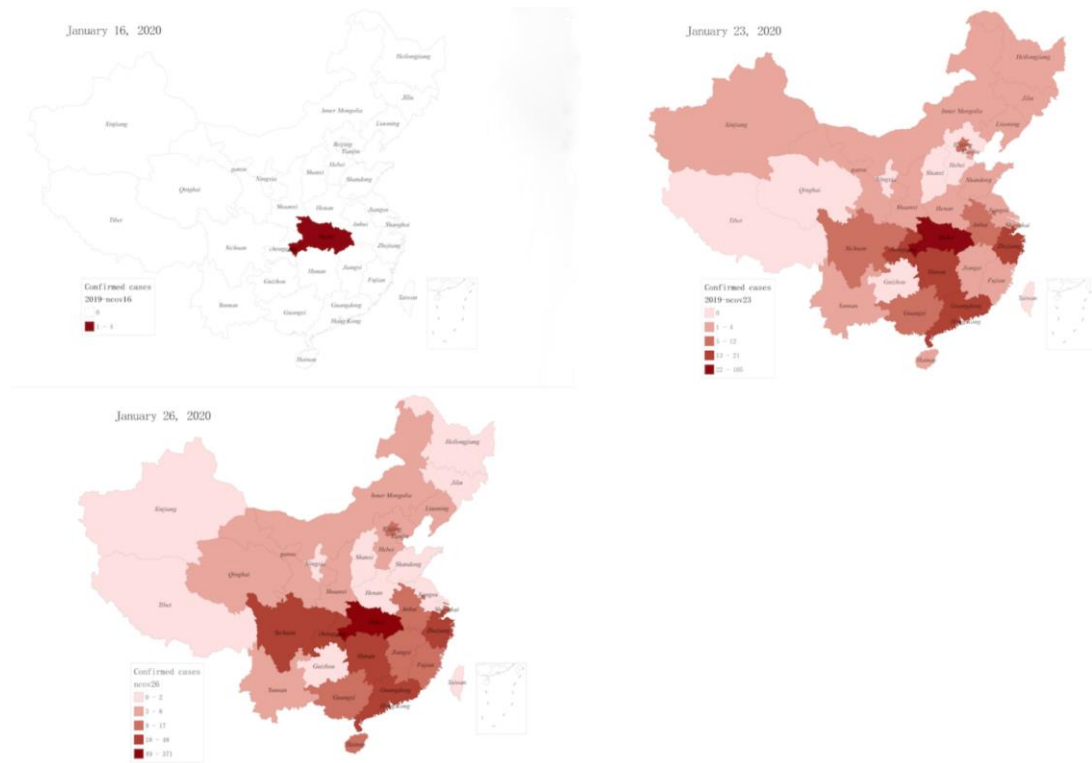
620

621

622

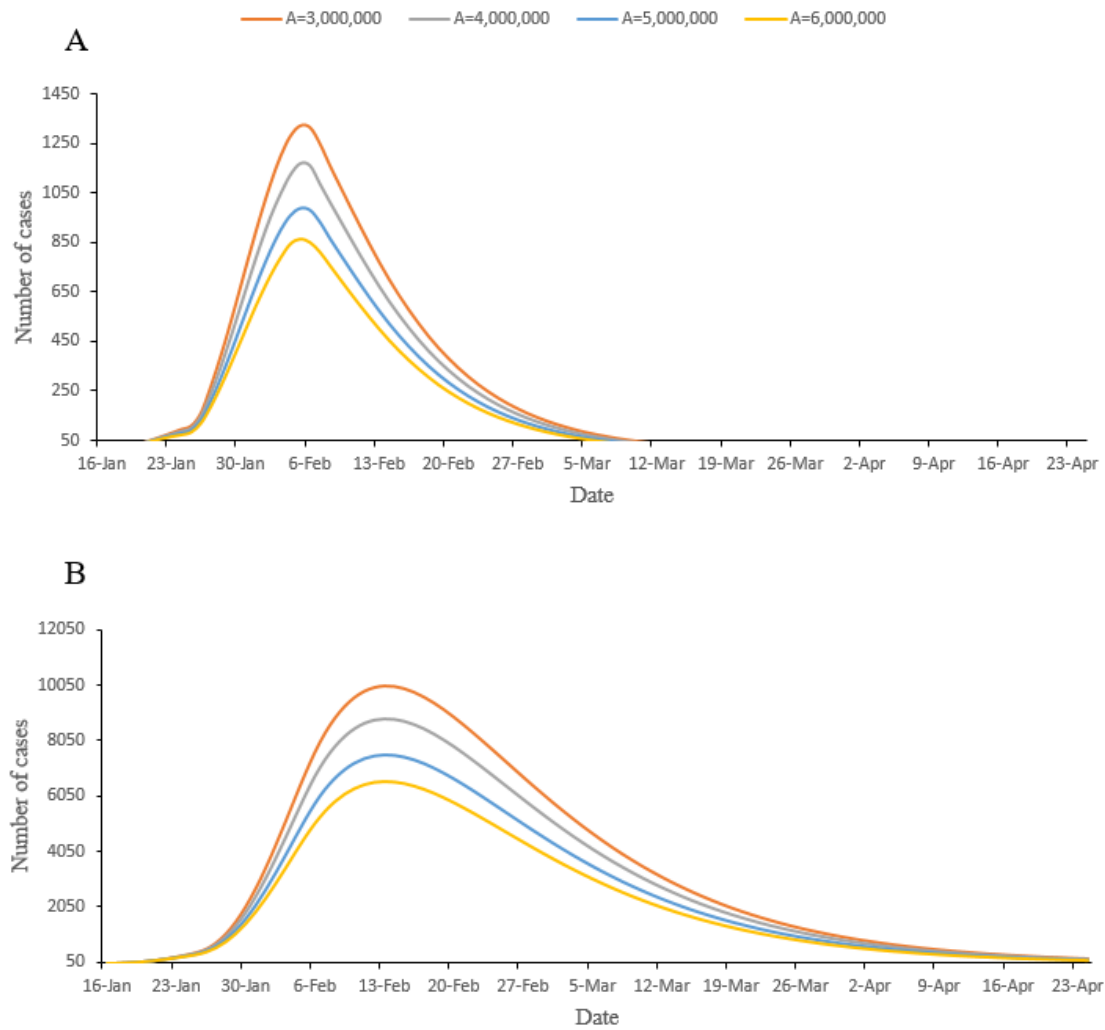
623

624



625
626
627
628
629
630
631
632
633
634
635
636
637
638
639
640
641
642
643
644
645
646
647

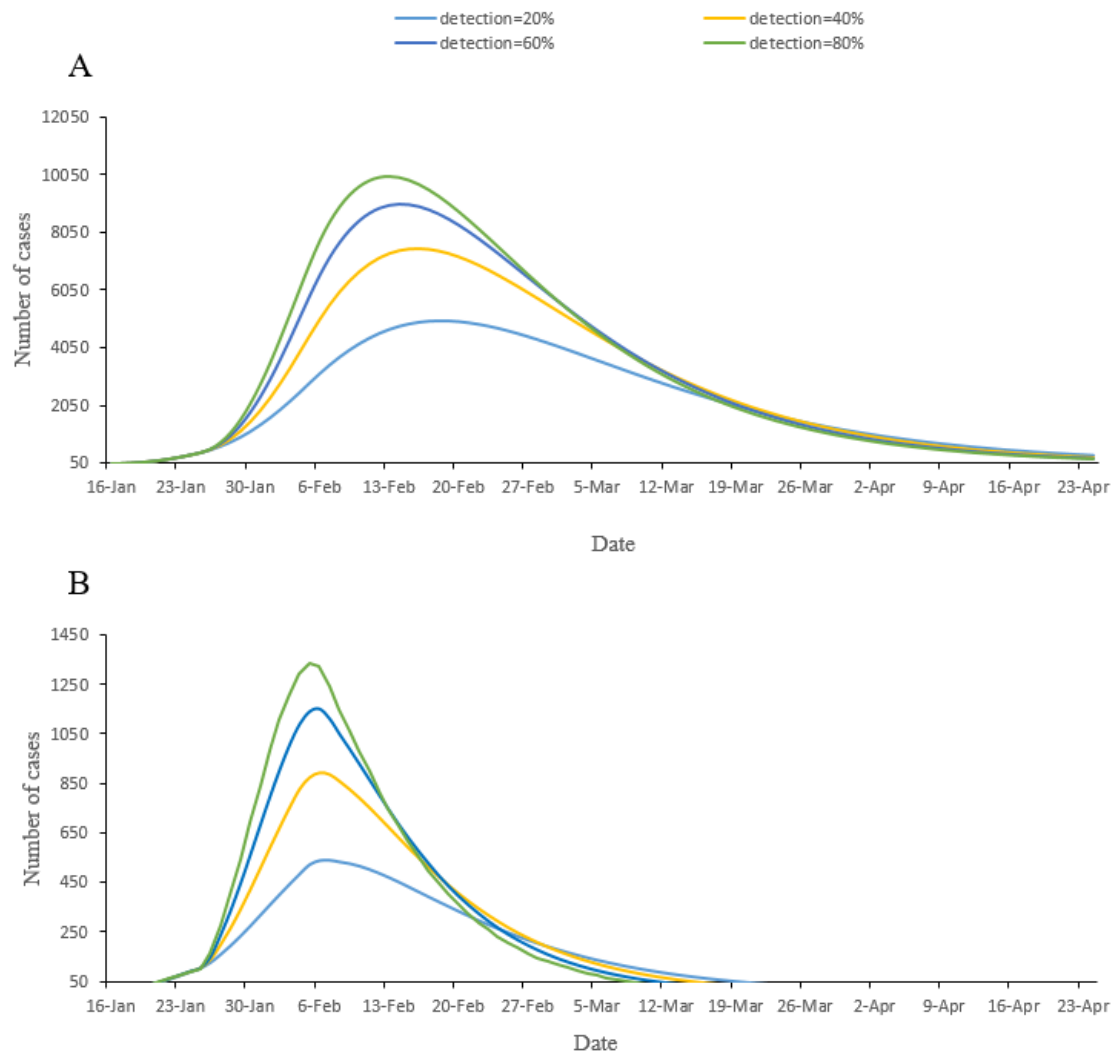
Suppl. Figure 3. Distribution of newly confirmed cases in China on various dates



648

649 **Suppl. Fig 4. Prediction of new conformed cases and total cases diagnosed in hospital per day in**
650 **different A values.**

651 The dynamic model for analyzing different situations of A, where A represents the total outflow
652 population of Wuhan from 16 January to 23 January. We used public data to calculate the proportion of
653 the outflow population (outflow population rate per day are 9%,9%,10%,10%,12%,15%,18%,17%)
654 from 16 January to 23 January 2020 in Wuhan, then allocated the number of daily outflows in Wuhan,
655 based on this proportion. For this figure, we assumed the number of daily outflows at different levels
656 and observed the number of new confirmed cases as well as the cumulative number of confirmed cases
657 of the 2019 novel coronavirus. Blue, orange, gray, and yellow lines represent a total of 3,000,000,
658 4,000,000, 5,000,000 and 6,000,000 people, respectively, having flowed out of Wuhan in 8 days.
659



660

661

662

663

664

665

666

667

668

669

670

671

672

673

674

675

676

677

678

679

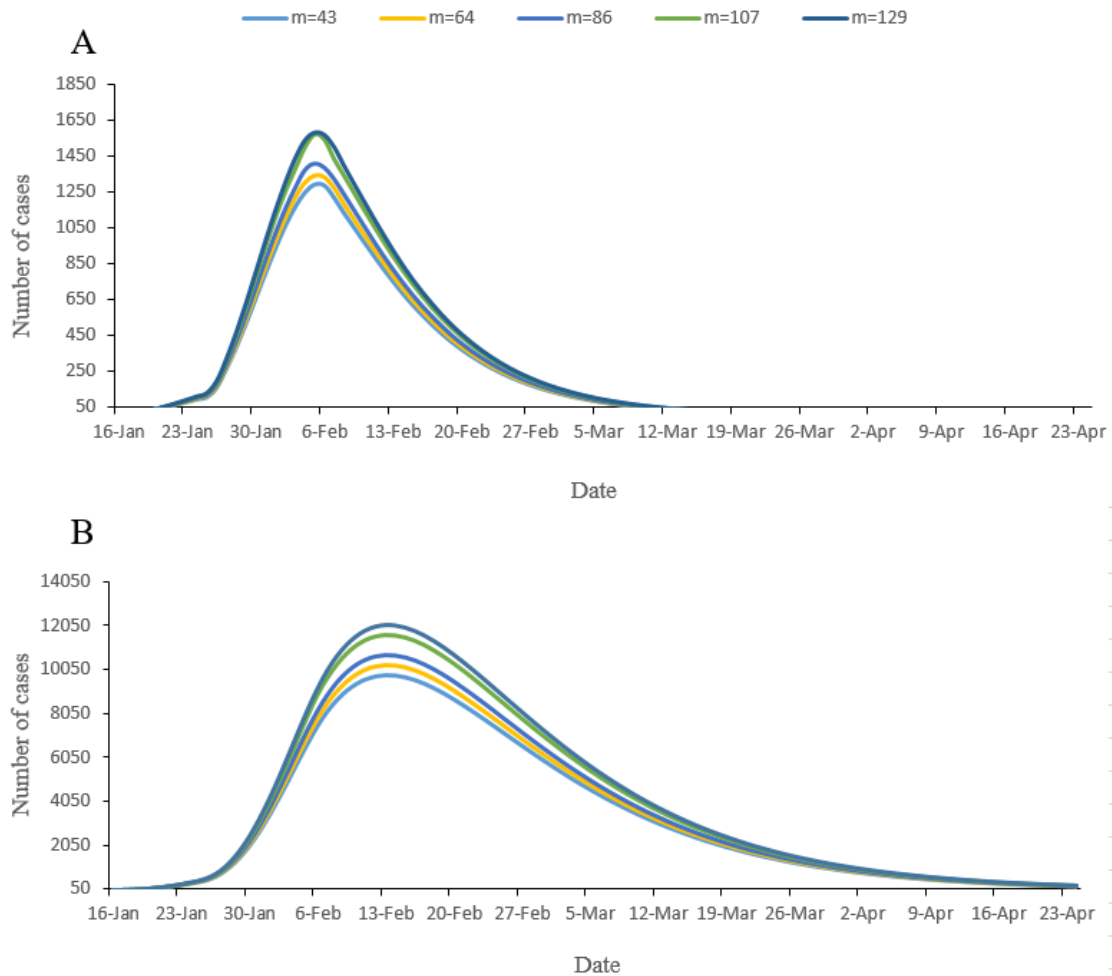
680

681

682

Suppl. Figure 5. Prediction of new confirmed cases and total cases per day in hospitals, under different detection rate

A and B are used to predict the influence of different detection rates on the number of real time inpatients and the number of new confirmed cases per day, using the Wuhan Model.



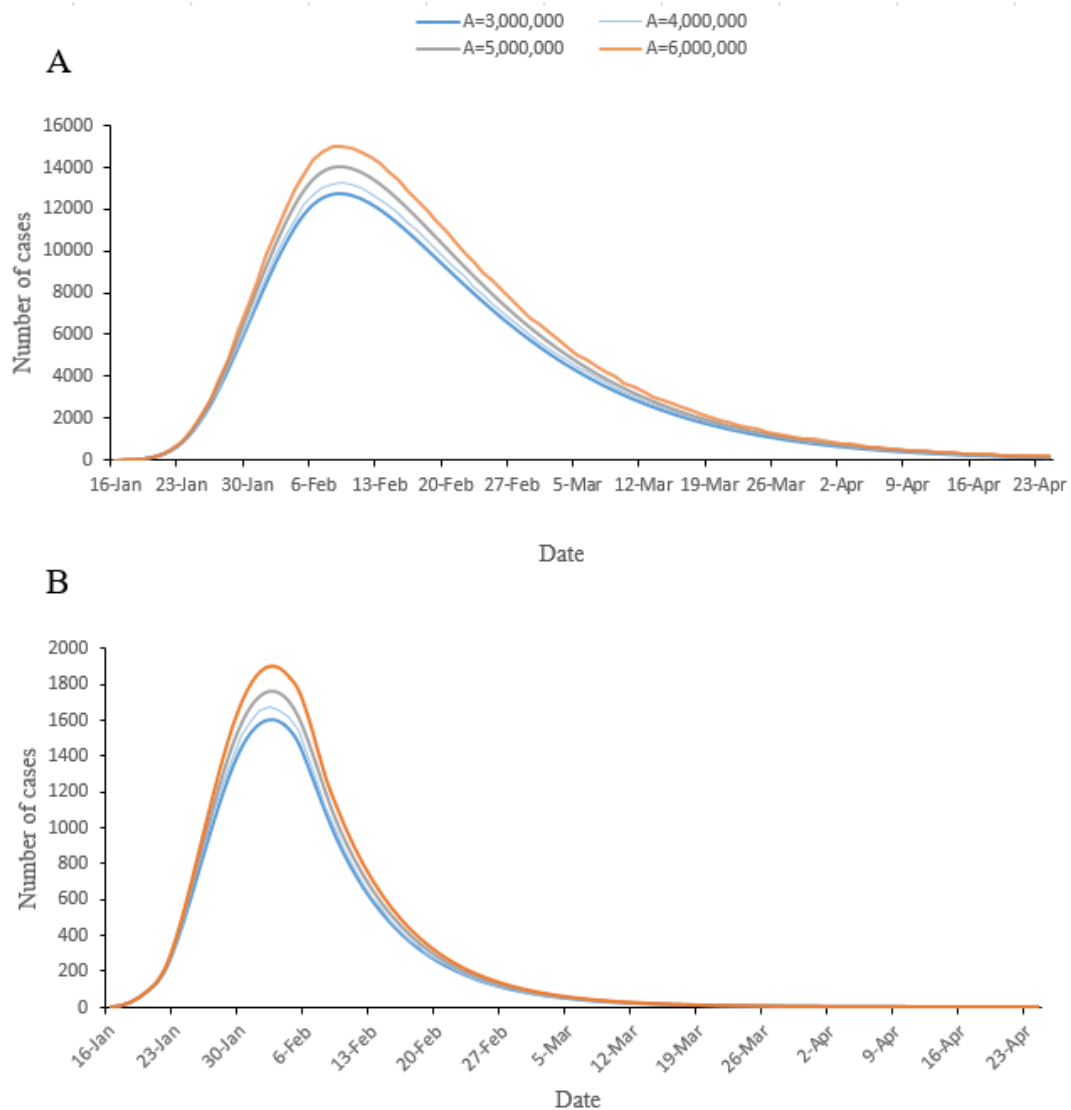
683

684 **Suppl. Figure 6. Epidemic forecasts for Wuhan under different scenarios of the number of**
685 **infections in the Huanan (Southern China) Seafood Wholesale Market.**

686 The dynamic model for analyzing different situations of m , where m represents the number of
687 confirmed cases who have been to Hainan seafood market. A and B show the prediction of the impact
688 of the COVID-19 virus on the number of real time inpatients and newly confirmed cases per day,
689 respectively. Under the stable outflow population, the number of newly confirmed cases per day as well
690 as the cumulative confirmed cases have an upward trend, with an increase in the number of initial
691 infections.

692

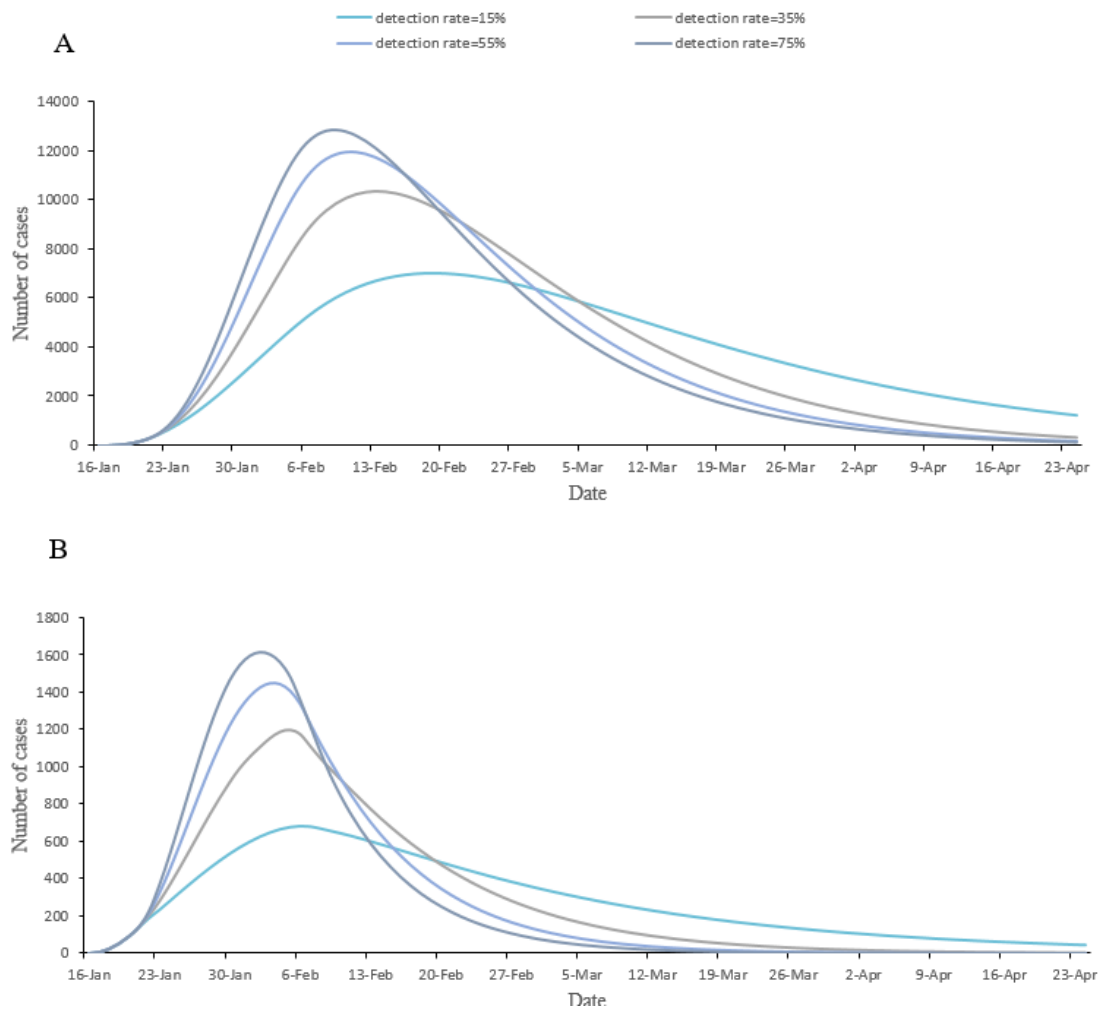
693



694

695 **Suppl. Figure 7. Epidemic forecasts for China (except Wuhan) under different scenarios of inflow**
696 **population.**

697 We used a dynamic model to analyze various situations of **A**, where **A** represents the total population
698 flowing from Wuhan to all parts of the country during the eight days from 16 January to 23 January
699 2020. We used public data to calculate the proportion of the population outflow from Wuhan, from 16
700 to 23 January, and then allocated the proportion of daily population inflow from Wuhan to all parts
701 of the country according to this proportion. This supplementary figure shows changes in the number of
702 newly confirmed patients and the cumulative number of inpatients per day, assuming different levels of
703 daily outflow population, which respectively represent the inflow population of 3,000,000, 4,000,000,
704 5,000,000 and 6,000,000.
705



706

707 **Suppl. Figure 8. Epidemic forecasts for China (except Wuhan) under different scenarios of**
708 **detection rate.**

709 A and B are used to predict the influence of different detection rates on the number of real time
710 inpatients and the number of new confirmed cases per day, using the National Model for the whole
711 country (except Wuhan).

712

713

714