

Study of the lymphocyte change between COVID-19 and non-COVID-19 pneumonia cases suggesting other factors besides uncontrolled inflammation contributed to multi-organ injury

Yishan Zheng^{1,3,*}, Zhen Huang^{2,*}, Guoping Yin⁴, Xia Zhang⁴, Wei Ye⁴, Zhiliang Hu⁴, Chunmei Hu⁴, Hongxia Wei⁴, Yi Zeng⁴, Yun Chi⁴, Cong Cheng⁴, Feishen Lin⁴, Hu Lu⁴, Lingyan Xiao⁴, Yan Song⁴, Chunming Wang⁵, Yongxiang Yi^{1,#}, Lei Dong^{2,6,#}

1. Department of Critical Care Medicine and Nanjing Infectious Disease Center, the Second Hospital of Nanjing, Nanjing University of Chinese Medicine, Nanjing, 210003, China.
2. State Key Laboratory of Pharmaceutical Biotechnology, School of Life Sciences, Nanjing University, Nanjing 210046, China.
3. Teaching Hospital of Medical School of Nanjing University, the Second Hospital of Nanjing, Nanjing, 210003, China.
4. Department of Anesthesiology, Tuberculosis and Infectious Disease, the Second Hospital of Nanjing, Nanjing University of Chinese Medicine, Nanjing, 210003, China.
5. State Key Laboratory of Quality Research in Chinese Medicine, Institute of Chinese Medical Sciences, University of Macau, Taipa, Macau SAR, China.
6. Chemistry and Biomedicine Innovative Center, Nanjing University, Nanjing 210046, China.

* Contributed equally

Corresponding authors: Lei Dong, Email: leidong@nju.edu.cn, Tel: +86-25-89681320; Yongxiang Yi, Email: ian0126@126.com, Tel: +86-25-83626203

Short title: The comparison between COVID-19 and non-COVID-19 pneumonia cases

Abstract

Background:

The corona virus disease 2019 (COVID-19) shows unusually high transmission rate and unique clinical characteristics, with key pathological mechanism remaining unclear. Here, we analysed the laboratory data based on clinical samples from COVID-19 patients, in parallel comparison with non-COVID-19 pneumonia cases, in an attempt to elucidate the key pathological features of COVID-19 during its infection of the human body.

Methods:

We analysed biochemical indices and lymphocyte subpopulation in COVID-19 patients, and compare these data from non-COVID-19 pneumonia cases. Correlation analysis was performed between leukocyte subgroups count and biochemical indexes in COVID-19 patients.

Results:

The study enrolled 110 patients, comprising 88 COVID-19 patients and 22 non-COVID-19 pneumonia cases. We observed significant differences, including abnormal biochemical indices (CRP, LDH, AST, eGFR, and sodium ion concentration) and reduced lymphocyte subsets count, between the COVID-19 patients and non-COVID-19-caused pneumonia cases. Correlation analysis indicates that the count for lymphocyte subsets-but not that for neutrophils and monocytes-exhibits a significant negative correlation with biochemical indices relating to organ injury, in the COVID-19 infected patients.

Conclusions:

The study indicates significantly different clinical features between 2019 novel

coronavirus (2019-nCoV)-caused and non-2019-nCoV-caused pneumonia, especially in terms of lymphocytopenia and organ injury. Notably, correlation analysis demonstrates that tissue damage in COVID-19 patients is attributed to virus infection itself rather than uncontrolled inflammatory responses ("cytokine storm"). These findings provide new insights for developing efficient therapeutic strategies against COVID-19 infection.

Introduction

Since its initial outbreak in the Chinese city Wuhan in early December 2019, the corona virus disease 2019 (COVID-19) has spread throughout China and globally, with the total number of reported cases approaching 100,000.¹ Analysis of clinical data available is in urgent demand for revealing the mechanisms of tissue damage and further devising more specific and efficient treatment strategies.

The 2019 novel coronavirus (2019-nCoV) is a novel beta coronavirus based on the data from gene sequencing.² Compared with other beta coronaviruses, such as SARS-CoV and MERS-CoV, 2019-nCoV infection leads to significant differences in clinical symptoms, according to the latest studies^[3], including remarkably higher occurrence of non-fever patients, fewer upper respiratory and gastrointestinal symptoms, a different profile of increased blood cytokines, more frequent multi-organ injury, and lower death rate.³⁻⁵ These differences, along with its unusual high transmission rate, suggest a different pathological mechanism underlying its infection of the human body.

In this study, we analyzed the clinical and laboratory data of most of the 2019-nCoV-infected patients in the China city Nanjing, aimed at revealing the unique pathological features of COVID-19 cases in comparison with non-2019-nCoV-caused pneumonia cases. Importantly, through correlation analysis of the changes in blood cell subgroups and key blood biochemical indexes of tissue injury, we have discovered unexpected clues of the pathogenic process following 2019-nCoV infection, which may provide valuable information for designing efficient approaches of treatment.

Methods

Patients

A study based on 88 COVID-19 cases and 22 non-COVID-19 pneumonia cases from the Second Hospital of Nanjing (Tangshan Branch, 1 Kangfu Road) was performed. All COVID-19 cases were diagnosed based on the World Health Organization (WHO) interim guidance and the Diagnosis and Treatment Plan for Novel Coronavirus Pneumonia Cases (Provisional) (7th Ed.)⁶⁻⁷ and confirmed positive for 2019-nCoV nucleic acid in the respiratory samples via real-time reverse-transcriptase polymerase-chain-reaction (RT-PCR). All non-COVID-19 pneumonia cases samples were negative, based on the absence of 2019-nCoV nucleic acid in the respiratory tract specimen. The RT-PCR assay was performed according to the protocol established by the WHO.⁸ Based on pulmonary CT imaging findings, all patients with 2019-nCoV infection were graded 1-3 from mild to server according to the lung injury degree. This study was approved by the ethics committee of the Second Hospital of Nanjing, with written informed consent obtained from each patient.

Blood samples and laboratory data collection

Blood samples from patients were collected for laboratory assessments and flow cytometry according to the doctor's instruction. All patients didn't receive any treatment before blood sampling. Laboratory data were obtained from electronic medical records. Laboratory assessments comprised the following indexes: complete blood count, blood biochemical test, liver, and renal function, electrolytes, C-reactive protein (CRP), procalcitonin, lactate dehydrogenase, and creatine kinase.

Flow cytometry analysis

Peripheral blood mononuclear cells (PBMC) were collected from EDTA anticoagulant whole blood via erythrocyte lysis. PBMCs were incubated with a panels of fluorescence-labeled antibodies (CD45/CD3/CD4/CD8, CD45/CD3/CD16CD56/CD19), or corresponding IgG controls (Biolegend, San Diego,

CA, USA) and rinsed with 1*PBS. Finally, the samples were examined by a flow cytometry analyzer (BD FACSCalibur, BD Biosciences, San Jose, CA, USA).

Statistical analysis

The results are expressed as means \pm SD. Data were statistically analyzed using Prism SPSS 19.0 (SPSS Inc., Chicago, IL, USA) and assessed for normality or homogeneity of variance. For normally distributed continuous variables, differences between multiple groups were compared using one-way ANOVA with Dunnett's tests or, if appropriate, using one-way ANOVA with post-hoc Bonferroni correction. Continuous variables that were not normally distributed were compared using Kruskal-Wallis test. Spearman correlation analysis between the blood cell subgroups and the blood biochemical indexes were conducted using SPSS 19.0. A value of $p < 0.05$ was considered significant. NS = not significant.

Results

Laboratory findings of COVID-19 infected patients

A total of 110 patients were included in the study (Table 1), consisting of 88 2019-nCoV infected patients (47 males and 41 females) with a mean age of 46.386 ± 17.532 and 22 non-COVID-19 pneumonia cases (11 males and 11 females) with a mean age of 36.727 ± 9.948 . The cohort of 2019-nCoV infected cases were further divided into the following three groups from mild to severe according to CT imaging findings: grade 1 group (aged 39.444 ± 14.328 , 6 males and 3 females), grade 2 group (aged 44.845 ± 16.799 , 36 males and 35 females) and grade 3 group (aged 67.875 ± 12.229 , 5 males and 3 females).

The complete blood count results indicated that the number of lymphocytes and platelets were significantly decreased in both grade 2- and grade 3-group COVID-19 patients, in comparison with non-2019-nCoV-infected pneumonia patients, suggesting

that COVID-19 patients could have lymphopenia and thrombocytopenia. In contrast, no significant differences in the quantities and proportions of monocytes and neutrophils were observed among these groups. Grade 3-group COVID-19 patients had significantly higher levels of C-reactive protein (CRP), compared with non-2019-nCoV-infected pneumonia patients. Blood biochemistry detection found that several indices related to organ injuries, including lactose dehydrogenase (LDH), aspartate aminotransferase (AST), estimated glomerular filtration rate (eGFR), and sodium ion concentration, were significantly different between grade 3-group COVID-19 patients and non-2019-nCoV-infected pneumonia patients.

Circulating lymphocyte subset profile of COVID-19 patients

To further explore the mechanism, and since lymphopenia was observed in COVID-19 patients, we performed flow cytometry to analyze the composition of lymphocyte subpopulations in the peripheral blood from patients. As shown in Table 2, the count of total CD45⁺ lymphocytes, CD3⁺ lymphocytes, CD4⁺ T cells, CD8⁺ T cells, and CD19⁺ B cells in both grade 2- and grade 3-group COVID-19 patients were significantly lower than those in non-COVID-19-infected pneumonia patients. However, the differences of the proportions of CD3⁺/CD45, CD4⁺/CD45, CD8⁺/CD45, CD4⁺/CD8⁺, and CD16CD56⁺/CD45⁺ and CD4⁺CD8⁺ T cells count were only observed between grade 3-group COVID-19 patients and non-2019-nCoV-infected pneumonia patients. Meanwhile, no difference of CD16CD56⁺ NK cells count was observed among different groups.

Correlation analysis between leukocyte subgroups count and biochemical indexes

To examine the role of inflammatory responses in organ injury of COVID-19 patients, we performed Spearman's rank correlation coefficient (ρ) analysis between leukocyte

subgroups count and biochemical indexes relating to organ injury in both COVID-19 (Table 3) and non-2019-nCoV-infected pneumonia patients (Table 4). In COVID-19 patients, LDH, AST, and sodium ion concentration showed significant correlations ($P < 0.05$) with total lymphocyte and all lymphocyte subsets count; meanwhile, creatinine kinase (CK), total bilirubin, eGFR, and potassium ion concentration only exhibited significant correlations with part of lymphocyte subpopulation count (Table 3). Among the lymphocyte subsets, CD4⁺ Th cells count showed significant correlations with most biochemical indices (Fig 1). In contrast, no significant correlation was found between biochemical indexes and the counts for monocytes and neutrophils. Meanwhile, LDH only negatively correlated with CD3⁺ T cell count and CD8⁺ T cell count and AST exhibited with CD8⁺ T cell count in non-2019-nCoV-infected pneumonia patients (Table 4). In general, correlation analysis implied a significant negative correlation between lymphocyte subsets count and organ injury degree in COVID-19 patients rather than non-2019-nCoV-infected pneumonia patients.

Discussion

Our most striking finding is that lymphocytopenia, which is common in acute infections,⁹ is particularly significant in 2019-nCoV infections.³ Others have demonstrated the correlation between the lymphocytopenia and the clinical severity.¹⁰ Most previous reports only compared the severe groups against non-severe patients or health controls; to further study this clinical feature, in our study, we compared the differences in the subgroups of lymphocytes harvested from COVID-19 patients with those from pneumonia patients not infected by 2019-nCoV. We noticed that lymphocytes also decreased in the grade 2-group COVID-19 patients, suggesting that it might not only be a consequence of the infection but is probably a critical factor

driving the development and deterioration of the disease. Among the lymphocyte subgroups, B cell exhibited the most significant differences from the non-2019-nCoV-infected pneumonia patients. Since B cells are responsible for the humoral immunity against the invaders via producing antibodies,¹¹ the impotent response of B cells may fail to restrict the virus expansion and release of free virions *in vivo*, which promotes the infection.

Another new and notable feature discovered is that the change in the proportion of the CD45+ lymphocytes was insignificant, compared with non-COVID-19 patients. Recently, postmortem results also found the numbers of trilineage in the central immune system (bone marrow) and lymphocytes in the peripheral immune system (spleen and lymph node) were all decreased significantly, indicating the peripheral lymphocytopenia cannot be simply attributed to the change of lymphocyte tissue distribution.⁷ These findings, first, demonstrate that the infection impacts on different lymphocyte subgroups evenly, and more interestingly, suggest that abnormality in cells that regulate the adaptive immunity may be responsible for the reduction of lymphocytes. For instance, H5N1 infection causes lymphocytopenia through dendritic cell (DC) dysfunction,¹² suggesting the function of key antigen-presenting cells can be drastically impaired during the infection. According to a study in rats, the myeloid cells also express the 2019-nCoV receptor ACE2;¹³ thus, we should consider the possibility of the virus infecting these cells, which is supported by the significant decrease in the platelet counts in both grade 2-group and grade 3-group COVID-19 patients and the reduced count of trilineage in the bone marrow .

Moreover, recent imaging findings and postmortem biopsies reports indicate that the infection can potentially damage other organs than the lung, including the kidney, heart, liver and the testis.¹⁴⁻¹⁶ In correspondence with pathological findings, we also

notice changes in multiple biochemical indexes relating to organ injuries, including LDH, CK, AST, and eGFR. In SARS-Cov cases, the multi-organ injury was considered as a result of the inflammatory reaction (inflammatory cytokine storm). However, the early report about COVID-19 cases found that the profile of cytokine in the blood of patients was different from that from SARS-Cov cases: not only pro-inflammatory cytokines but also anti-inflammatory cytokines (IL-4, IL-10, etc.) increased in the COVID-19 cases.⁴ Additionally, all recent reports demonstrated that high fever cases (>38 °C) were significantly fewer (even in severe cases) in COVID-19 patients than in SARS-CoV or MERS-CoV cases.³ These features suggest that the consequences in the COVID-19 patients might not be mainly due to the inflammatory reaction, especially in the non-severe cases. Instead, the damage was likely to be caused by the virus itself. Therefore, we performed a correlation analysis between the number of lymphocyte subgroups and the biochemical indexes. We found that most of the indexes relating to organ injuries were negatively correlated with the number of lymphocytes in 2019-nCoV infected patients but not in non-2019-nCoV-infected pneumonia patients, further highlighting the virus infection – rather than the inflammatory reaction – as the possible cause of the multi-organ injury. Another supportive finding is that the difference in the number of monocytes, neutrophils, and NK cells is not significant in our analysis; while theoretically, these innate immune cells are the main player in a “cytokine storm”. Interestingly, the most significant correlation happened between the injury indexes and CD4+ Th cell counts. Because CD4+ Th cells are critical for the regulation of both cellular immunity and humoral immunity,¹⁷ it is reasonable that these cells are most sensitive to the total anti-virus immune responses. This finding further suggests that the damage of the tissue is from the virus itself. Consistently, studies on the tissue distribution of ACE2

suggest that the virus receptor is widely expressed in human tissue including the digestive tract, kidney, testis, and others.¹⁸

We highlight that the above finding is important for the design of treatment regimens. Current treatments do not suggest using specific drugs to improve the activity of immune systems, such as the GM-CSF or other immune stimuli, in fearing of the exaggeration of inflammatory reactions and cytokine storm.¹⁹ However, based on our clinical findings, we should seriously consider using immune-activating treatments for COVID-19 patients, which will be helpful to compensate the dysfunctions in the adaptive immune system and accelerate virus clearance process *in vivo*. Considering the high possibility of secondary infection induced by excessive inflammation in the severe cases, this strategy should be safer to apply in non-severe patients with the aim to lower the occurrence of severe cases.

Taken together, our analysis in the present study, based on clinical data, demonstrate significant differences between pneumonia caused and not caused by 2019-nCoV- especially including the lymphocytopenia. Our results further suggest that the tissue damage to COVID-19 patients might be mainly due to virus infection itself rather than uncontrolled inflammatory reactions. These findings are valuable for the development of more efficient treatments.

Conflict of interest: None declared.

Acknowledgments: This study was funded by the Young Medical Talents of Jiangsu Province (QNRC2016056), the fifth period "333 high-level personnel training project" in Jiangsu Province (2016-III-0084), the National Natural Science Foundation of China (31971309 and 31671031), the Jiangsu Province Funds for Distinguished Young Scientists (BK20170015).

Data Availability Statement: The data used to support the findings of this study are available from the corresponding author upon request.

References

1. Special Expert Group for Control of the Epidemic of Novel Coronavirus Pneumonia of the Chinese Preventive Medicine Association. The epidemiological characteristics of an outbreak of 2019 novel coronavirus diseases (COVID-19) in China. *Zhonghua Liu Xing Bing Xue Za Zhi*. 2020;**41**:145-151.
2. Lu R, Zhao X, Li J, *et al*. Genomic characterisation and epidemiology of 2019 novel coronavirus: implications for virus origins and receptor binding. *Lancet*. 2020;**395**:565-574.
3. Guan W, Ni Z, Hu Y, *et al*. Clinical characteristics of 2019 novel coronavirus infection in China. *medRxiv*. doi.org/10.1101/2020.02.10.20021675
4. Huang C, Wang Y, Li X, *et al*. Clinical features of patients infected with 2019 novel coronavirus in Wuhan, China. *Lancet*. 2020;**395**:497-506.
5. Alosaimi B, Hamed ME, Naeem A, *et al*. MERS-CoV infection is associated with downregulation of genes encoding Th1 and Th2 cytokines/chemokines and elevated inflammatory innate immune response in the lower respiratory tract. *Cytokine*. 2020;**126**:154895.
6. WHO. Clinical management of severe acute respiratory infection when Novel coronavirus (nCoV) infection is suspected: interim guidance. Jan 28,2020. (<https://www.who.int/docs/default-source/coronaviruse/clinical-management-of-novel-cov.pdf>) Accessed February 24
7. The Diagnosis and Treatment Plan for Novel Coronavirus Pneumonia Cases (Provisional) (7th Ed.) (In Chinese) (<http://www.nhc.gov.cn/yzygj/s7653p/202003/46c9294a7dfe4cef80dc7f5912eb1989.shtml>) Accessed March 4
8. Laboratory testing for 2019 novel coronavirus (2019-nCoV) in suspected human cases. WHO 2020. (<https://www.who.int/publications-detail/laboratory-testing-for-2019-novel-coronavirus-in-suspected-human-cases-20200117>) Accessed February 24
9. Russell CD, Unger SA, Walton M, Schwarze J. The Human Immune Response to Respiratory Syncytial Virus Infection. *Clin Microbiol Rev*. 2017;**30**:481-502.
10. Liu Y, Yang Y, Zhang C, *et al*. Clinical and biochemical indexes from 2019-nCoV infected patients linked to viral loads and lung injury. *Sci China Life Sci*. 2020. doi: 10.1007/s11427-020-1643-8. [Epub ahead of print]

11. Pieper K, Grimbacher B, Eibel H. B-cell biology and development. *J Allergy Clin Immunol.* 2013;**131**:959-71.
12. Boonnak K, Vogel L, Feldmann F, Feldmann H, Legge KL, Subbarao K. Lymphopenia associated with highly virulent H5N1 virus infection due to plasmacytoid dendritic cell-mediated apoptosis of T cells. *J Immunol.* 2014;**192**:5906-12.
13. Strawn WB, Richmond RS, Ann Tallant E, Gallagher PE, Ferrario CM. Renin-angiotensin system expression in rat bone marrow haematopoietic and stromal cells. *Br J Haematol.* 2004;**126**:120-6.
14. Caibin Fan, Kai Li, Yanhong Ding, Wei L, Wang J. ACE2 Expression in Kidney and Testis May Cause Kidney and Testis Damage After 2019-nCoV Infection. *medRxiv.* doi: org/10.1101/2020.02.12.20022418
15. Xu Z, Shi L, Wang Y, *et al.* Pathological findings of COVID-19 associated with acute respiratory distress syndrome. *Lancet.* 2020. doi: 10.1016/S2213-2600(20)30076-X
16. Liu Q, Wang R, Qu G, *et al.* General anatomy report of novel coronavirus pneumonia death corpse. *Fa Yi Xue Za Zhi.* 2020;**36**:19-21. 10.12116/j.issn.1004-5619.2020.01.00 (In Chinese)
17. Zhu J, Yamane H, Paul WE. Differentiation of effector CD4 T cell populations. *Annu Rev Immunol.* 2010;**28**:445-89.
18. Hamming I, Timens W, Bulthuis ML, Lely AT, Navis G, van Goor H. Tissue distribution of ACE2 protein, the functional receptor for SARS coronavirus. A first step in understanding SARS pathogenesis. *J Pathol.* 2004;**203**:631-7.
19. Becher B, Tugues S, Greter M. GM-CSF: From Growth Factor to Central Mediator of Tissue Inflammation. *Immunity.* 2016;**45**:963-973.

Figures

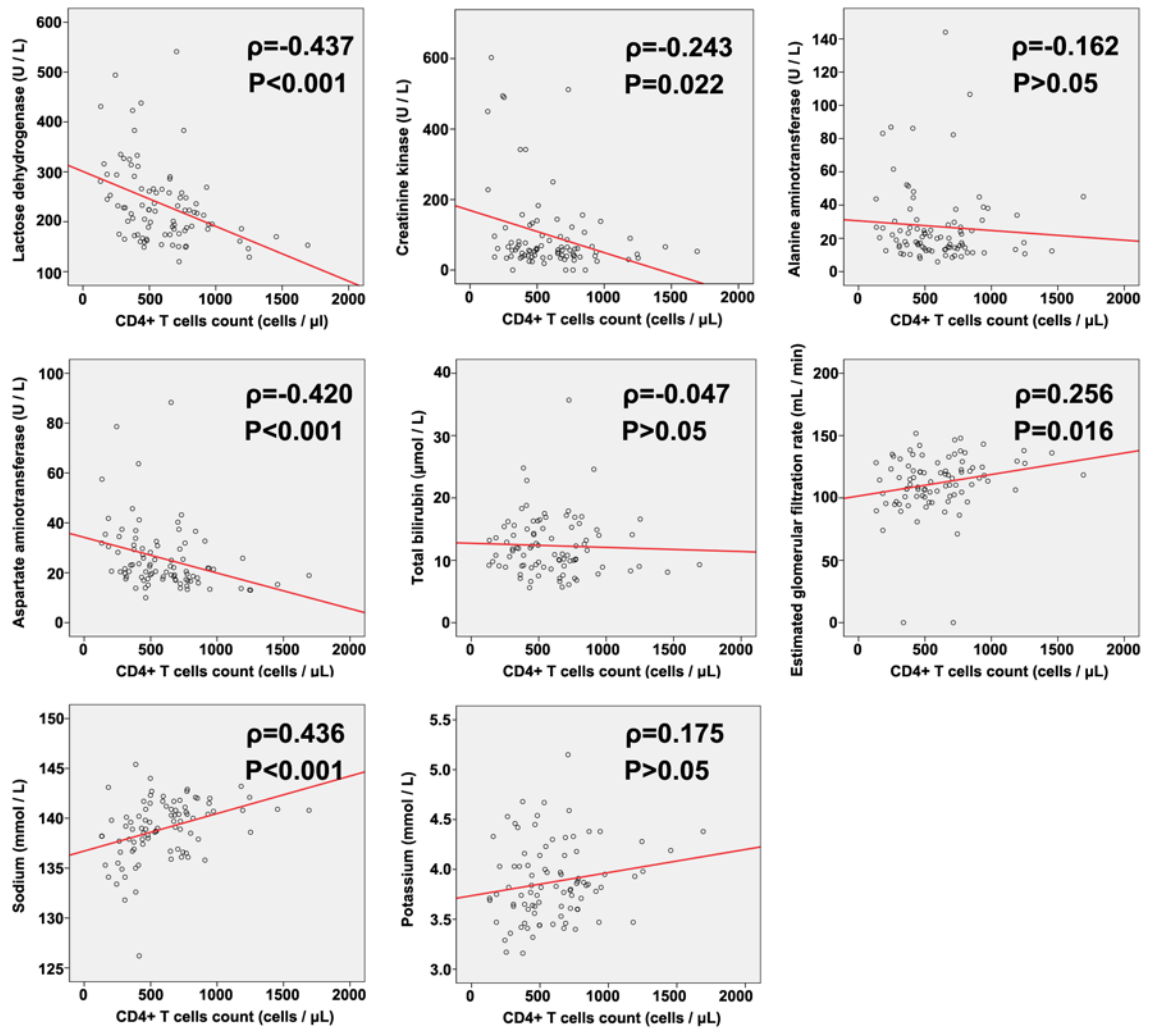


Figure 1 Spearman's rank correlation coefficient (ρ) analysis between CD4+ T cells count and biochemical indexes in patients with 2019-nCoV infection. A value of $p < 0.05$ was considered statistically significant.

Table 1. Clinical characteristics and laboratory findings of patients with 2019-nCoV infection (n=88) and non-COVID-19 pneumonia patients (n=22).

Parameter (characteristics laboratory findings)	2019-nCoV infected patients (case groups)			Non-COVID-19 pneumonia patients n=22
	Grade 1 n=9	Grade 2 n=71	Grade 3 n=8	
Patients No.	9	71	8	22
Age (years)	39.444±14.328	44.845±16.799	67.875±12.229*	36.727±9.948
Gender: male/female	6/3	36/35	5/3	11/11
Blood leukocyte count, 10⁹/L	5.028±2.52	4.772±1.406	4.525±1.596	6.006±1.837
Lymphocyte count, 10⁹/L	1.678±0.817	1.379±0.55*	1.22±0.807*	1.927±0.441
Lymphocyte ratio, %	33.6±6.511	30.149±10.504	28.063±15.759	33.532±10.24
Neutrophil count, 10⁹/L	2.939±1.639	2.905±1.25	2.465±0.91	3.779±1.869
Neutrophil ratio, %	57.889±8.04	60.134±11.369	63.875±17.697	57.436±11.668
Monocyte count,10⁹/L	0.366±0.163	0.383±0.123	0.3±0.111	0.434±0.158
Monocyte ratio, %	7.667±2.415	8.544±2.954	8.063±3.478	7.355±2.579
Platelet count, 10⁹/L	224.889±48.766	191.718±55.575*	152.375±43.471*	242.045±64.865
Mean platelet volume, fl	10.144±0.972	10.352±1.361*	10.313±0.81	9.1±1.133
Erythrocyte sedimentation rate, mm/h	17.75±12.881	16.681±15.412	33±23.523	11.571±15.397
Hematocrit, mm/h	39.489±5.215	40.679±5.338	40.05±4.534	41±5.408
C-reactive protein level, mg/L	4.218±4.671	5.612±4.005	10.798±5.566*	3.762±4.105
Procalcitonin, ng/ml	0.053±0.096	0.096±0.495	0.07±0.057	0.046±0.052
Album level, g/L	46.267±1.862	44.282±3.862	40.3±5.279	45.959±5.333
Globulin level, g/L	21.856±1.914	21.468±3.514	21.15±3.215	22.759±3.868
Total bilirubin, µmol/L	11.067±4.808	12.323±4.754	13.875±5.14	14.936±5.741
Ischemia Modified Albumin(IMA), U/mL	72.889±4.256	74.269±14.21	74.875±14.545	79.773±15.964
Lactose dehydrogenase, U/L	233±89.285	228.634±78.901	295.375±78.425*	199±50.143
Creatinine kinase, U/L	104.111±96.883	105.537±128.146	74.875±65.392	102.409±135.612

Alanine aminotransferase, U/L	30.033±24.279	27.025±24.145	24.188±12.676	34.559±25.066
Aspartate aminotransferase, U/L	25.989±15.554	24.694±12.76	33.813±13.547	23.05±8.904
Lactic acid level, mmol/L	2.912±0.918	2.302±1.065	1.825±0.902	3.12±1.369
Estimated glomerular filtration rate, ml/min	117.63±15.011	116.062±16.958	96.953±12.143*	122.898±13.615
Potassium, mmol/L	3.876±0.443	3.877±0.387	3.855±0.363	4.015±0.374
Sodium, mmol/L	139.667±2.458	139.142±3.058	136.525±2.187*	140.509±2.732

Plus-minus values are means ± SD.

* P<0.05, P-value stands for the comparison between 2019-nCoV infected patients (Grade 1, Grade 2, or Grade 3) and non-COVID-19 patients.

Table 2. Results of lymphocyte subpopulations in peripheral blood of patients with 2019-nCoV infection (n=88) and non-COVID-19 pneumonia patients (n=22).

Parameter (characteristics laboratory findings)	2019-nCoV infected patients (case groups)			Non-COVID-19 pneumonia patients n=22
	Grade 1	Grade 2	Grade 3	
	n=9	n=71	n=8	
CD45+ lymphocytes count, cells/uL	1958.778±887.919	1563.704±631.897*	1186.25±767.487*	2169.091±522.489
CD3+ T cells count, cells/μL	1433.333±803.57	1117.563±465.484*	530.25±255.417*	1605.545±426.538
CD3+/CD45+ ratio, %	71.159±12.3	71.415±9.774	49.864±15.247*	73.765±7.834
CD4+ T cells count, cells/μL	695.333±420.085	613.31±276.869*	336.375±140.798*	918.182±275.854
CD4+/CD45+ ratio, %	35.556±9.888	39.211±9.58	29.875±9.79*	42.045±6.869
CD8+ T cells count, cells/μL	567.778±377.568	416.62±213.984*	161.125±109.694*	589.227±200.706
CD8+/CD45+ ratio, %	27.434±9.314	26.617±8.218	14.306±7.998*	27.182±6.551
CD4+/CD8+ (Th/Ts) ratio, %	1.421±0.589	1.666±0.773	3.164±2.277*	1.653±0.537
CD4+CD8+ T cells count, cells/μL	1.889±1.9	2.099±1.742	0.375±0.744*	2.818±2.737
CD4+CD8+/CD45 ratio, %	0.094±0.093	0.137±0.123	0.029±0.054	0.123±0.118
CD19+ B cells count, cells/μL	227.444±142.755	200.225±211.713*	109.5±57.756*	326.273±134.208
CD19+ B cells ratio, %	11.782±3.838	12.051±5.785	11.448±5.666	14.779±4.326
CD16+CD56+ NK cells count, cells/μL	288±206.573	229.93±168.416	537.5±674.557	221.909±144.364
CD16+CD56+ NK cells ratio, %	16.533±12.726	15.47±10.782	38.2±18.427*	10.774±6.624

Plus-minus values are means ± SD.

* P<0.05, P-value stands for the comparison between 2019-nCoV infected patients (Grade 1, Grade 2, or Grade 3) and non-COVID-19 patients.

Table 3. Spearman correlation analysis between biochemical index levels and the count of lymphocyte subpopulations, neutrophil and monocyte in patients with 2019-nCoV infection (n=88).

Biochemical indexes	CD45+ lymphocytes count		CD3+ T cells count		CD4+ T cells count		CD8+ T cells count		CD19+ B cells count		Neutrophils count		Monocytes count	
	ρ	P value	ρ	P value	ρ	P value	ρ	P value	ρ	P value	ρ	P value	ρ	P value
Lactose dehydrogenase	-0.297	0.005	-0.387	<0.001	-0.437	<0.001	-0.251	0.018	-0.322	0.002	0.159	NS	-0.059	NS
Creatinine kinase	-0.166	NS	-0.198	NS	-0.243	0.022	-0.126	NS	-0.075	NS	0.111	NS	-0.020	NS
Alanine aminotransferase	-0.121	NS	-0.161	NS	-0.162	NS	-0.086	NS	-0.081	NS	0.098	NS	0.038	NS
Aspartate aminotransferase	-0.320	0.002	-0.388	<0.001	-0.420	<0.001	-0.288	0.006	-0.337	0.001	0.046	NS	-0.086	NS
Total bilirubin	-0.061	NS	-0.073	NS	-0.047	NS	-0.110	NS	-0.214	0.046	-0.080	NS	0.133	NS
Estimated glomerular filtration rate	0.191	NS	0.252	0.018	0.256	0.016	0.249	0.019	0.178	0.098	-0.144	NS	0.021	NS
Sodium	0.276	0.009	0.370	<0.001	0.436	<0.001	0.243	0.023	0.407	<0.001	0.017	NS	0.046	NS
Potassium	0.353	<0.001	0.321	0.002	0.175	NS	0.328	0.002	0.185	NS	0.099	NS	0.099	NS

ρ = Spearman's rank correlation coefficient. NS = non-significant.

Table 4. Spearman correlation analysis between biochemical index levels and the count of lymphocyte subpopulations, neutrophil and monocyte in non-COVID-19 pneumonia patients (n=22).

Biochemical indexes	CD45+ lymphocytes count		CD3+ T cells count		CD4+ T cells count		CD8+ T cells count		CD19+ B cells count		Neutrophils count		Monocytes count	
	ρ	P value	ρ	P value	ρ	P value	ρ	P value	ρ	P value	ρ	P value	ρ	P value
Lactose dehydrogenase	-0.312	NS	-0.506	0.016	-0.416	NS	-0.489	0.021	-0.167	NS	0.049	NS	0.094	NS
Creatinine kinase	0.123	NS	0.079	NS	-0.163	NS	0.184	NS	0.002	NS	0.057	NS	0.371	NS
Alanine aminotransferase	0.007	NS	-0.185	NS	-0.231	NS	-0.070	NS	0.038	NS	-0.037	NS	0.190	NS
Aspartate aminotransferase	-0.262	NS	-0.419	NS	-0.464	0.030	-0.244	NS	-0.244	NS	-0.244	NS	0.126	NS
Total bilirubin	0.347	NS	0.306	NS	0.238	NS	0.414	NS	0.297	NS	0.362	NS	0.109	NS
Estimated glomerular filtration rate	0.342	NS	0.359	NS	0.321	NS	0.318	NS	0.057	0.098	-0.028	NS	-0.213	NS
Sodium	0.190	NS	0.198	NS	0.073	NS	0.232	NS	0.090	NS	0.205	NS	0.272	NS
Potassium	0.171	NS	0.166	NS	0.335	NS	0.197	NS	0.114	NS	-0.041	NS	-0.156	NS

ρ = Spearman's rank correlation coefficient. NS = non-significant.