

1 **Early evaluation of Wuhan City travel restrictions in response to the 2019 novel coronavirus**
2 **outbreak**

3
4 Huaiyu Tian^{1*†}, Yidan Li^{1*}, Yonghong Liu^{1*}, Moritz Kraemer^{2,3,4*}, Bin Chen^{5*}, Jun Cai^{6*},
5 Bingying Li¹, Bo Xu⁶, Qiqi Yang¹, Peng Yang⁷, Yujun Cui⁸, Yimeng Song⁹, Pai Zheng¹⁰, Quanyi
6 Wang⁷, Ottar Bjornstad^{11,12}, Ruifu Yang^{8†}, Oliver G. Pybus^{2†}, Bryan Grenfell^{13,14†}, Christopher
7 Dye^{2†}

8
9 ¹ State Key Laboratory of Remote Sensing Science, College of Global Change and Earth System
10 Science, Beijing Normal University, Beijing, China

11 ² Department of Zoology, University of Oxford, Oxford, UK

12 ³ Harvard Medical School, Harvard University, Boston, MA, USA

13 ⁴ Boston Children's Hospital, Boston, MA, USA

14 ⁵ Department of Land, Air and Water Resources, University of California Davis, CA, USA

15 ⁶ Ministry of Education Key Laboratory for Earth System Modeling, Department of Earth System
16 Science, Tsinghua University, Beijing, China

17 ⁷ Beijing Center for Disease Prevention and Control, Beijing, China

18 ⁸ State Key Laboratory of Pathogen and Biosecurity, Beijing Institute of Microbiology and
19 Epidemiology, Beijing, China

20 ⁹ Department of Urban Planning and Design, The University of Hong Kong, Hong Kong

21 ¹⁰ Department of Occupational and Environmental Health Sciences, School of Public Health,
22 Peking University, China

23 ¹¹ Center for Infectious Disease Dynamics, Department of Biology, Pennsylvania State University,
24 University Park, Pennsylvania, USA

25 ¹² Department of Entomology, College of Agricultural Sciences, Pennsylvania State University,
26 University Park, Pennsylvania, USA

27 ¹³ Division of International Epidemiology and Population Studies, Fogarty International Center,
28 National Institutes of Health, Bethesda, MD, USA

29 ¹⁴ Department of Ecology and Evolutionary Biology, Princeton University, Princeton, NJ, USA.

30
31 *These authors contributed equally to this work.

32 †Corresponding author. Email: tianhuaiyu@gmail.com (H.Y.T.); christopher.dye@zoo.ox.ac.uk
33 (C.D.); grenfell@princeton.edu (B.G.); oliver.pybus@zoo.ox.ac.uk (O.G.P.);
34 ruifuyang@gmail.com (R.F.Y.);

35
36 **Author contributions:** H.T., P.Z., R.F.Y., O.G.P., B.G., C.D. designed the study. B.C. and Y.M.S.
37 collected and processed the Tencent's LBS data. Y.H.L., B.Y.L., B.X., Q.Q.Y., P.Y., Y.J.C., Q.Y.W.
38 collected the statistical data. H.Y.T. and J.C. conducted the analyses. M.K., O.B., R.F.Y., O.G.P.,
39 B.G., and C.D. edited the manuscript. H.T. and Y.D.L. wrote the manuscript. All authors read and
40 approved the manuscript.

41
42
43
44

45 **One Sentence Summary**

46

47 The Wuhan city travel shutdown delayed the dispersal of 2019-nCoV infection to other cities in
48 China

49

50 **Abstract**

51

52 An ongoing outbreak of a novel coronavirus (2019-nCoV) was first reported in China in
53 December 2019 and has spread to other countries. On January 23rd 2020 China shut down transit
54 in and out of Wuhan city, a major transport hub and conurbation of 11 million inhabitants, to
55 contain the outbreak. By combining epidemiological and human mobility data we find that the
56 travel ban slowed the dispersal of 2019-nCoV from Wuhan to other cities in China by 2.91 days
57 (95% CI: 2.54-3.29). This delay provided extra time to establish and reinforce other control
58 measures that are essential to halt the epidemic. The ongoing diffusion of 2019-nCoV provides an
59 opportunity to examine how travel restrictions impede the spatial dispersal of an emerging
60 infectious disease.

61

62 *Key words:* 2019 novel coronavirus; Wuhan; spatiotemporal transmission; China;

63

64 **Main text**

65

66 At end of December 2019, less than a month before Chinese New Year (Spring Festival), a cluster
67 of pneumonia cases caused by an unknown pathogen were reported in Wuhan City, the largest
68 transport hub in Central China. A novel coronavirus provisionally named 2019-nCoV¹ has since
69 been identified as the etiological agent. Human-to-human transmission of 2019-nCoV has been
70 confirmed^{2,3} and by January 28th 2020 all provinces in China except Tibet had reported
71 2019-nCoV infections, and the population at risk of infection in the country stands at >1.2 billion
72 people. The increasing movement of people for Chinese New Year is expected to spread the virus
73 further throughout cities in China and elsewhere. To prevent further diffusion of 2019-nCoV from
74 its source, Wuhan prohibited all transport in and out of the city as of 10:00 on January 23rd. To
75 our knowledge, this is the largest attempted movement restriction or quarantine in human history
76 to prevent infectious disease spread. By January 25th, 30 provinces in China had raised their
77 public health response level to the highest state of emergency (level-1). Here we present an
78 analysis and quantification of the consequences and importance of the Wuhan travel prohibition
79 on the ongoing spread of 2019-nCoV across China.

80

81 Assessment and measurement of the effects of large-scale interventions are crucial for the design
82 of efficient responses against this and future epidemics. To this end, we collected all case reports
83 for 262 cities across China and noted the onset time of the first case of 2019-nCoV (arrival time)
84 and the timing of the local response. We analyse these dates together with high-resolution data on
85 human movement among cities in China, obtained from a large dataset of geolocated mobile
86 phone records, spanning 2018, from the Tencent network. This dataset describes patterns of human
87 mobility across China before 2019-nCoV was discovered.

88

89 In order to quantify the effect of the Wuhan travel shutdown on 2019-nCoV epidemic spread we
90 analyzed the arrival time of 2019-nCoV from Wuhan to each city as a function of geographic
91 distance (between city centers) and of human movement by air, train, and road (as recorded by
92 Tencent's location-based services database). Spatial spread of 2019-nCoV (Fig. 1A) was rapid,
93 with 262 cities reporting cases within only 28 days (for comparison, the 2009-H1N1pdm took 132
94 days to reach the current extent of 2019-nCoV in China). Most cities with early arrival dates were
95 in southeast China among which there is greater mobility and higher population density. The rate
96 at which cities first reported 2019-nCoV peaked on January 23rd (the day of the Wuhan travel ban),
97 with 60 reports, after which the spatial diffusion of 2019-nCoV slowed.

98
99 Table 1 shows that the Wuhan travel intervention slowed disease spread. As expected, the time of
100 arrival of 2019-nCoV in each city increased with distance from Wuhan, and decreased with
101 passenger flow from Wuhan. Thus the epidemic arrived sooner in those cities that had larger
102 population and had more travelers from Wuhan. On average, the Wuhan shutdown delayed the
103 arrival time of 2019-nCoV in other cities by 2.91 days (95%CI: 2.54-3.29 days), added to the
104 expected arrival time of 22.3 days (95%CI: 20.6-24.0 days) without the shutdown (Fig. 1B). More
105 than 130 cities, covering more than half geographic area and population of China, benefited from
106 this intervention (Fig. 1C).

107
108 Our analysis evaluates a unique intervention against an emerging infectious disease – the cessation
109 of travel from a large, well-connected city in an industrialized country (Fig. 1D). We find that this
110 intervention was effective in slowing 2019-nCoV invasion of new locations. However, other
111 measures need to be reinforced to halt the ongoing epidemic. The Wuhan travel ban provided extra
112 time to make progress on these responses. In addition to governmental responses, public
113 awareness is critical for controlling the spread of this novel coronavirus. Early detection of
114 2019-nCoV cases in new locations in China is needed in the coming weeks and months to prevent
115 other cities becoming major exporters of 2019-nCoV. China is better equipped than in the past to
116 meet this challenge and a direct reporting system for notifiable epidemic diseases was established
117 in the country after the 2003 SARS outbreak. However, the experience of 2019-nCoV in China
118 suggests that urbanization and the development of modern transport systems increase the urgency
119 of control measures against emerging infectious diseases, as indicated by the faster spatial spread
120 of 2019-nCoV than H1N1pdm in China.

121
122 While emerging data from mainland China on 2019-nCoV epidemiology and virus genomics have
123 generated important insights into the origin, transmissibility, and severity of this unfolding
124 epidemic,^{1,4} many uncertainties remain.⁵ For example, the role of mobility network structure on
125 disease diffusion is unknown, and the degree to which the delay in spatial spread (due to the
126 Wuhan travel ban) will impact on the final size of the epidemic is unclear. Our analysis is a
127 preliminary step and further analyses and models are required to evaluate the impact of quarantine
128 and other interventions.

129
130

131 **Materials and Methods**

132

133 *Epidemiological and demographic data*

134 We collected raw data from the daily official reports of the health commission of 34
135 provincial-level administrative units and 341 city-level units. Only laboratory-confirmed cases
136 were used. We constructed a real-time database recording the date of the first reported case in all
137 newly-infected cities with daily updates from December 31st 2019 to January 28th 2020.
138 Population sizes for each city were collected from the China City Statistical Yearbook
139 (<http://olap.epsnet.com.cn/>). The population sizes recorded for 2018 were used. We calculated the
140 distance between Wuhan and each city reporting 2019-nCoV cases. The location of each city is
141 geocoded by the latitude and longitude coordinates of the city center.

142

143 *Human mobility data*

144 Human movement can be observed directly from mobile phone data, through the location-based
145 services (LBS) employed by popular Tencent applications, such as WeChat and QQ. Average
146 movement outflows from Wuhan City to other cities, by air, train, and road, were calculated from
147 the migration flows database (<https://heat.qq.com/>) over the entire 2018.

148

149 *Statistical model*

150 The association between distance, human movement, interventions and epidemic timing of
151 2019-nCoV was assessed with a regression analysis using a General Linear Model framework
152 (GLM). The best model that emerged from this analysis is:

153

$$154 \quad Y_j = \alpha + \beta_1 \log_{10}(TotalFlow_j) + \beta_2 \log_{10}(Pop_j) + \beta_3 Lon_j + \beta_4 Lat_j + \beta_5 Shutdown_j \quad [1]$$

155

156 where $TotalFlow_j$ represents the average passenger volume from Wuhan City to city j by airplane,
157 train, and road. Pop_j is the population in city j . Lat_j and Lon_j represent *latitude* and *longitude* of
158 city j . The dummy variable $shutdown_j$ is used to identify whether the arrival time of the newly
159 infected city j is influenced by the shutdown of Wuhan, where 0 represents no-intervention and 1
160 represents intervention. The dependent variable Y_j is the arrival time of the epidemic in city j ,
161 which measures the spatial spread of 2019-nCoV. The β_i are the regression coefficients.

162

163 **Acknowledgements**

164 We thank the many thousands of CDC staff and local health workers in China who collected data
165 and continue to strive to contain 2019-nCoV in China and elsewhere. Funding for this study was
166 provided by the Beijing Natural Science Foundation (JQ18025); Beijing Advanced Innovation
167 Program for Land Surface Science; National Natural Science Foundation of China (81673234);
168 Young Elite Scientist Sponsorship Program by CAST (YESS)(2018QNRC001); HT and OGP
169 acknowledge support from the Oxford Martin School. The funders had no role in study design,
170 data collection and analysis, decision to publish, or preparation of the manuscript.

171

172

173

174 **References**

- 175 1. Zhu N, Zhang D, Wang W, et al. A Novel Coronavirus from Patients with Pneumonia in
176 China, 2019. *New Eng J Med* 2020:DOI: 10.1056/NEJMoa2001017.
- 177 2. Cai J, Xu B, Chan KKY, et al. Roles of Different Transport Modes in the Spatial Spread of
178 the 2009 Influenza A (H1N1) Pandemic in Mainland China. *Int J Environ Res Public Health*
179 2019;16:222.
- 180 3. Wang C, Horby PW, Hayden FG, Gao GF. A novel coronavirus outbreak of global health
181 concern. *Lancet* 2020:DOI:[https://doi.org/10.1016/S0140-6736\(20\)30185-9](https://doi.org/10.1016/S0140-6736(20)30185-9).
- 182 4. Chan JFW, Yuan S, Kok KH, et al. A familial cluster of pneumonia associated with the
183 2019 novel coronavirus indicating person-to-person transmission: a study of a family cluster.
184 *Lancet* 2020:DOI:[https://doi.org/10.1016/S0140-6736\(20\)30154-9](https://doi.org/10.1016/S0140-6736(20)30154-9).
- 185 5. Heymann DL. Data sharing and outbreaks: best practice exemplified. *Lancet*
186 2020:DOI:[https://doi.org/10.1016/S0140-6736\(20\)30184-7](https://doi.org/10.1016/S0140-6736(20)30184-7).

187
188
189
190
191

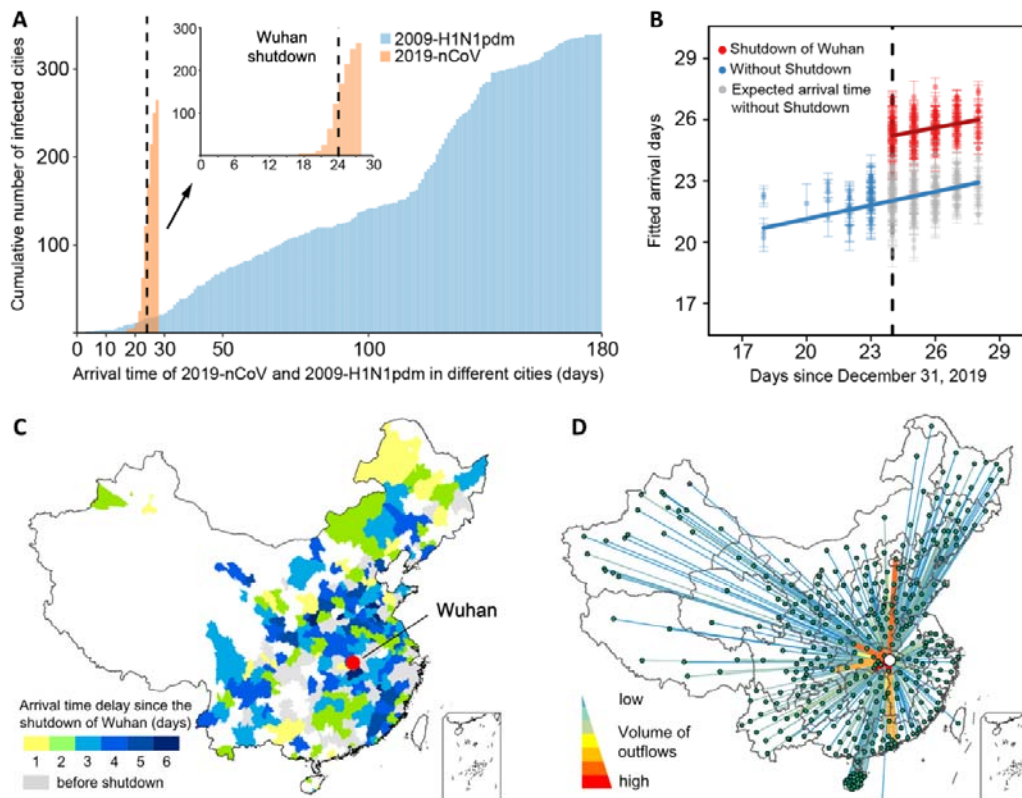
192 Table 1. Estimating the impact of the Wuhan travel ban on 2019-nCoV diffusion to other cities in
193 China.
194

Covariates	Coefficient	95% CI	P
(Intercept)	25.95	(23.43, 28.48)	<0.001
Longitude	-0.03	(-0.05, -0.01)	0.003
Latitude	0.03	(0.01, 0.06)	0.014
log10.Population	-0.70	(-1.12, -0.28)	0.001
log10.Total flow	-0.12	(-0.22, -0.02)	0.024
Shutdown intervention (days)	2.91	(2.54, 3.29)	<0.001

195 R^2/R^2 adjusted, 0.59 /0.58

196

197



198

199

200 Figure 1. Spatial diffusion of 2019-nCoV in China. (A) Cumulative number of cities reporting

201 disease. Arrival days, defined as the time interval (days) from the date of the first case in the first

202 infected city (Wuhan) to the date of the first case in each newly infected city (a total of 262 cities),

203 to characterize the inter-city transmission rate of 2019-nCoV and 2009-H1N1pdm, respectively.

204 Dashed line shows the date of Wuhan shutdown. (B) Before (blue) and after (red) the intervention.

205 The blue line and points show the fitted regression of arrival times up to the shutdown on day 24

206 (January 23rd, vertical dashed line). Grey points show the expected arrival times after day 24,

207 without the shutdown. The red line and points show the fitted regression of delayed arrival times

208 after the shutdown on day 24. Each observation (point) represents one city. Error bars give ± 2

209 standard deviations. (C) Map of arrival time delayed by the shutdown of Wuhan. Colors represent

210 the change in arrival time (days) after January 23rd. The arrival time is estimated using the data

211 before the shutdown of Wuhan. (D) Human movement outflows from Wuhan city to other cities in

212 2018. The warmer and thick lines denote higher volume of outflows (high-connectivity) while the

213 cool and thin lines denote a lower volume of outflows (low-connectivity).

214