

Abstract

18 The antimicrobial resistance crisis has persisted despite broad attempts at intervention. Detailed
studies of the population dynamics that lead to resistance could identify additional intervention
20 points. An important driver of resistance in the most concerning antibiotic resistant pathogens
can be selection imposed on bacterial populations that are not the intended target of
22 antimicrobial therapy. Here we focus on the important nosocomial pathogen *Enterococcus*
faecium in a hospital system where resistance to daptomycin is evolving despite standard
24 interventions. We hypothesized that the intravenous use of daptomycin generates off-target
selection for resistance in transmissible gastrointestinal (carriage) populations of *E. faecium*. We
26 performed a case-control study in which the daptomycin resistance of *E. faecium* isolated from
rectal swabs from daptomycin-exposed patients was compared to a control group of patients
28 exposed to linezolid, a drug with similar indications. In the daptomycin-exposed group,
daptomycin resistance of *E. faecium* from the off-target population was on average 50% higher
30 than resistance in the control group (n=428 independent *E. faecium* clones from 22 patients).
There was also greater phenotypic diversity in daptomycin resistance within daptomycin-
32 exposed patients. Multiple samples over time were available from a subset of patients, and these
demonstrate wide variability in temporal dynamics, from long-term maintenance of resistance
34 to rapid return to sensitivity after daptomycin treatment stopped. Our results demonstrate that
off-target gastrointestinal populations rapidly respond to intravenous antibiotic exposure.
36 Gastrointestinal populations are the source for faecal transmission and so can be the driver for
hospital-wide population level increases in resistance. Focusing on the off-target evolutionary
38 dynamics may offer novel avenues to slow the spread of antibiotic resistance.

40
42
44
46
48
50
52
54
56
58
60
62
64

Introduction

Antimicrobial resistance emerges and spreads in response to antimicrobial treatment [1]. For the microbial population being intentionally targeted by drug treatment, selective pressure favoring resistance is an unavoidable consequence of suppressing population growth. However, antimicrobial exposure is not limited to the site of infection and so can exert selective pressure on so-called off-target or bystander populations [2–4]. This off-target selective pressure is particularly problematic for colonizing opportunistic pathogens, which include the multidrug-resistant pathogens of greatest concern [5]. Antimicrobial pressure imposed on these colonizing organisms has no therapeutic benefits, but can select for antibiotic resistant infections in the treated patient, or for the transmission of resistant isolates to other patients [6]. Selection for resistance in gastrointestinal carriage populations has been demonstrated in multiple opportunistic pathogens including Enterobacteriaceae [7–12], *Enterococcus* [13] and Bacteroides [14]. In many situations, selection on off-target populations may be a major contributor to population level resistance. For example, it has been estimated that as much as 90% of drug exposure experienced by *Klebsiella* is off-target [15]. The evolutionary dynamics in these off-target populations are poorly understood. This fundamental knowledge gap limits the ability to evaluate novel resistance management strategies in the off-target population such as choice of antimicrobial spectrum, use of antibiotic combinations, optimized routes of administration and addition of novel adjuvant therapies [6].

The evolution of daptomycin resistance among vancomycin-resistant *Enterococcus faecium* (VR *E. faecium*) is a relevant and tractable system to study off-target selection. VR *E. faecium* is an important cause of hospital acquired infections [16]. It spends the bulk of its life history asymptotically colonizing the gastrointestinal tract of its host, but colonization is a key risk factor for clinical infections [17]. Intrinsic and acquired multi-drug resistance are common in VR *E. faecium*, leaving daptomycin as one of the few remaining treatment options. Daptomycin is delivered exclusively as an intravenous formulation, with 6% of the drug being excreted in the feces [18], allowing the

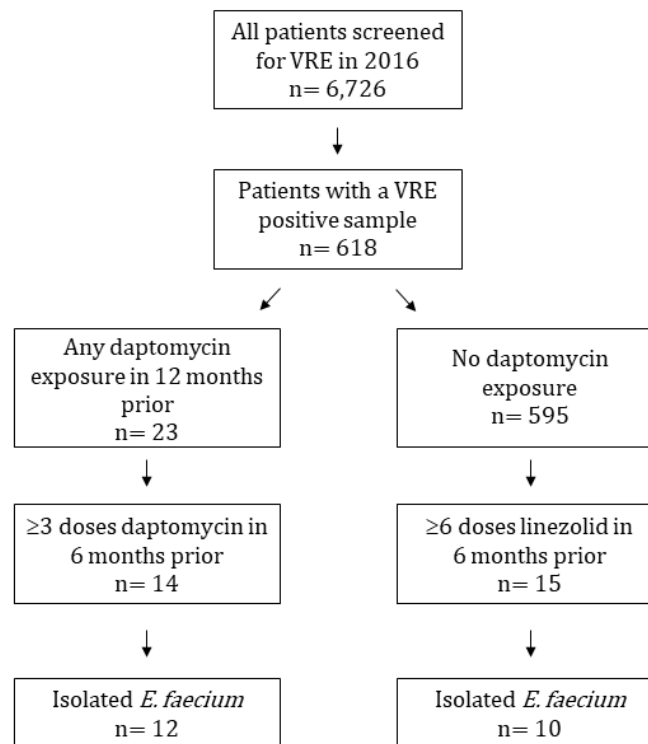
potential for off-target selection. Daptomycin resistance has been shown to arise within patients
66 during treatment [19]. Additionally, a number of studies have reported prior daptomycin treatment
as a key risk factor for infection with daptomycin resistant VRE [20–22], which is consistent with off-
68 target selection. Finally, transmission of VR *E. faecium* is common in hospital settings, meaning
resistance that arises in one patient may pose a threat to others.

70 We hypothesize that most transmitted daptomycin resistance in VR *E. faecium* is due to off-target
selection in the gastrointestinal tract of patients. This hypothesis predicts that daptomycin exposure
72 is associated with daptomycin resistance in the off-target population, which has not been
demonstrated previously. If this hypothesis is true, it raises additional questions: is there pre-
74 existing variation within patients prior to exposure on which selection can act; is there more
variability within some patients than others; does daptomycin exposure result in a single resistance
76 phenotype dominating the gut; and finally, is variation in resistance maintained over time?

To address these questions, we focus on an institution where daptomycin resistance in *E. faecium* has
78 been observed to evolve within patients and across the whole hospital population [19,23]. We
investigate the impact of daptomycin exposure on daptomycin resistance in *E. faecium* colonizing the
80 intestinal tract by utilizing rectal swabs available from a prospective surveillance program. The
organisms colonizing the intestinal tract are not the target of treatment, thus resistance in this
82 population represents unintended, off-target evolution. We perform a case-control study, in which
patients exposed to daptomycin are compared to patients exposed to a drug with similar indications,
84 linezolid. The available samples allow us to isolate and measure resistance in multiple independent
E. faecium colonies per patient swab sample. We quantify the impact of drug exposure on the mean
86 and the distribution of phenotypes in the colonizing population, which gives unique insight the into
potential mechanism of competition and transmission in this pathogen. Finally, where samples are
88 available, we explore changes in resistance over time within patients.

Results

90 During the calendar year 2016, 6,726 patients had a rectal swab to screen for VRE colonization, of
these, 618 patients were positive for VRE. Treatment with daptomycin within this pool of patients is
92 low (23/618 patients, Fig 1), partially due to a change in antibiotic use in 2015 away from
daptomycin [23]. Fourteen patients met the inclusion criteria for cases with at least three doses
94 (three days of therapy) of daptomycin in the six months prior to the positive swab (daptomycin
group). A further 15 patients met the criteria for the control group with no known prior daptomycin
96 treatment and at least six doses (three days of therapy) of linezolid (Fig 1, see methods for further
details). The first sample from each patient to meet these criteria is considered the index sample for
98 that patient.



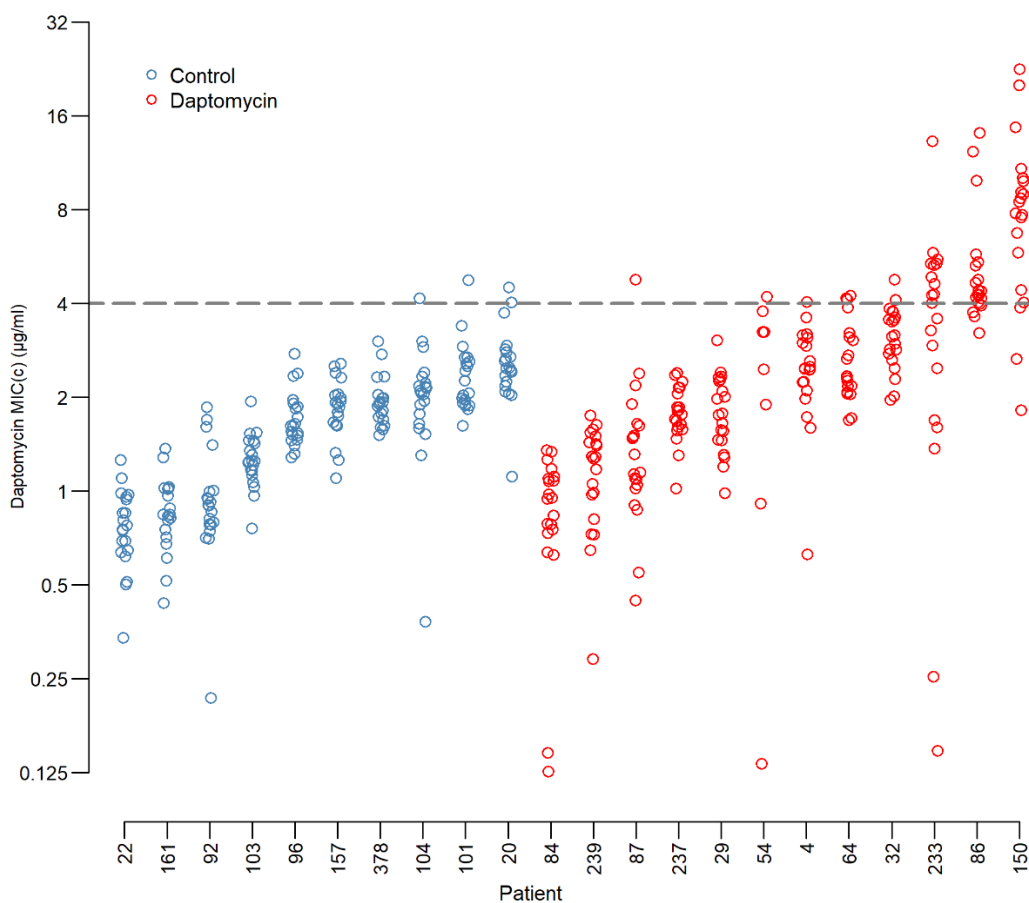
100 **Fig 1. Identification of patients meeting the cases and control study definitions.**

Enterococcus was isolated from all samples using Enterococcosel agar. While the inclusion criteria
102 required a positive result for VR *E. faecium*, the collection protocol resulted in isolation of both

vancomycin resistant and vancomycin susceptible *E. faecium*. For two of the daptomycin treated
104 samples and five of the control samples, *E. faecium* was either absent or at a density (relative to other
Enterococcus species) that did not allow isolation of sufficient *E. faecium* colonies. Samples where no
106 *E. faecium* was isolated after sampling 20 random *Enterococcus* colonies, or where only one colony
was isolated after sampling 50 random *Enterococcus* colonies, were excluded from further analysis.
108 For the remaining index samples, colonies of *Enterococcus* were randomly sampled until 20 *E.*
faecium clones per sample were isolated, requiring in some patients, isolation of up to 80
110 *Enterococcus* sp. colonies in order to obtain 20 that were *E. faecium*. The majority of patient samples
contained multiple enterococcal species (14/22), or a combination of vancomycin resistant and
112 vancomycin sensitive *E. faecium* (9/22). In five patients we identified only VR *E. faecium* (see S1
Appendix). For one patient (Patient 54) in the daptomycin group, only eight colonies were isolated
114 due to low *Enterococcus* densities in the patient sample.

Exposure and Resistance

116 Daptomycin exposure in the 6 months prior to the index sample ranged from 3-34 doses (days of
therapy), and the most recent dose before the index sample was between 0 and 141 days earlier (see
118 S2 Table). Patients with prior daptomycin treatment had greater proportions of resistant clones,
defined as a calculated minimal inhibitory concentration (MIC_c) greater than 4µg/ml (Fig 2). Overall
120 50 out of 426 clones were resistant to daptomycin with 94% of these in patients with prior
daptomycin exposure. Eight of the 11 patients with resistant clones were from the daptomycin
122 exposed group. Moreover, highly resistant *E. faecium* clones (MIC_c > 8µg/ml) were only found in the
daptomycin exposed group. Patient mean MIC_c was not associated with enterococcal species
124 diversity (Spearman $\rho = -0.06$, $p = 0.79$; S1 Appendix), the number of days since the last dose of
daptomycin (Spearman $\rho = -0.07$, $p = 0.83$; S2 App), or the number of doses of daptomycin in the
126 previous 6 months (Spearman $\rho = 0.22$, $p = 0.50$; S2 App).

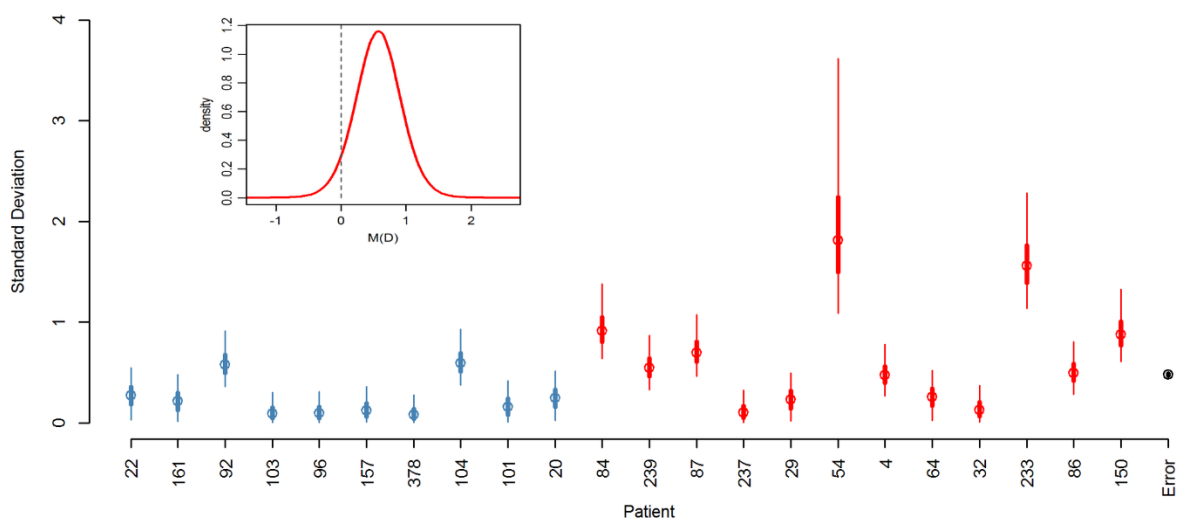


128 **Fig 2. Daptomycin MICs by patient.**

129 *Daptomycin resistance of each clone by patient and exposure group. Blue circles are the control*
130 *patients and red circles are from daptomycin exposed patients. Each circle is the mean of two*
131 *independent estimates of the MIC_c for a single clone. Clones above the dashed line are*
132 *daptomycin resistant (clones with a calculated MIC (MIC_c) >4µg/ml which is equivalent to the*
133 *clinical 2-fold MIC cutoff of ≥8µg/ml (see Methods for a more detailed discussion of the MIC_c*
134 *method)).*

135 We are also interested in how variation in the resistance phenotype is spread across the study
136 population. A Bayesian mixed-effect model was designed to test for the presence of variation in
137 daptomycin resistance at the levels of interest: within patients, between patients, and between
138

140 groups (daptomycin exposed vs not daptomycin exposed). Using the DIC criteria [24], the best fit
142 model included a random effect for “patient”, and for “clone” nested within patient, such that the
144 distribution for the clone effect differed from one patient to another (Table 1).
146 The fixed effect for daptomycin exposure, M_D , provided support for the hypothesis that resistance is
higher in daptomycin-treated patients with 94.5% of the posterior distribution for the fixed effect
falling above zero (Fig 3 insert). The mean of M_D is 0.57 on a \log_2 scale, which equates to
approximately a 50% increase in mean MIC_C .



148 **Fig 3. Posterior distribution of random and fixed effects from the Bayesian mixed effects**
150 **model.**
(Main Panel) Posterior distributions for standard deviations of the clones within patients and
152 the error. Blue markers indicate control patients, red indicate daptomycin treated patients and
black is the error (Circle: mean; thick lines: 50% credibility interval; thin lines: 95% credibility
154 interval). The 95% credibility interval of the error falls within the error marker. (Insert)
Posterior distribution of fixed effect for prior daptomycin exposure.

156 **Table 1:** Summary of Models and DIC analysis results. Models 1 through 5 were compared using
 157 DIC criteria to ascertain how variation in resistance is spread across the study population. Models
 158 varied in the presence or absence of a patient effect and distribution of the clone effect. Model A
 was designed to test if clonal variation is affected by prior daptomycin exposure.

Model	mean deviance	DIC (pD)	Δ DIC	patient effect	distribution of clone effect different for each patient	distribution of clone effect same for each patient	distribution of clone effect depends on treatment group
Model 1:	1157	1384	0	Y	Y		
Model 2:	1197	1513	129	Y		Y	
Model 3:	1886	1909	525	Y			
Model 4:	1175	1478	94		Y		
Model 5:	1196	1576	192			Y	
Model A:	1201	1468	84	Y			Y

160

Within-patient Variation

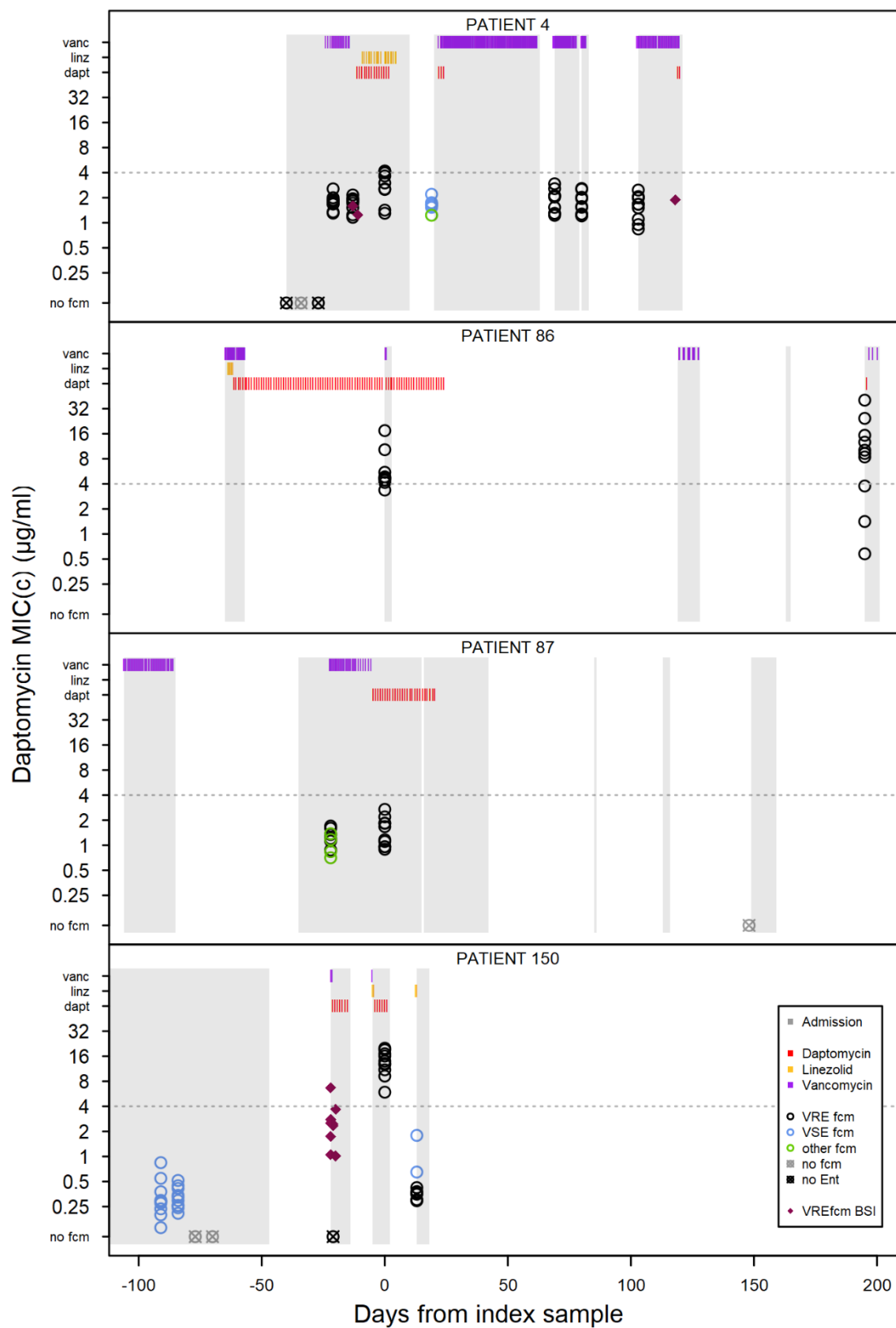
162 The variation in MIC_c among clones within patients differed from one patient to the another (Table
 1; Model 1 is a significantly better fit (as measured by a lower DIC) than Model 2). The posterior
 164 distributions for the standard deviations of the clone effects for each patient are summarized in Fig
 3. Further, Model A was designed to assess if there was evidence that patients with prior daptomycin
 166 exposure had greater between-clone variability in MIC_c. In particular, in Model A the standard
 deviation for the “clone” effect for control patients was modeled with a single parameter λ and for
 168 the daptomycin patients was $\lambda \exp(\alpha)$ (see S4 Appendix for details). By using this parameterization
 we were able to quantify the amount of evidence for daptomycin-treated patients having greater
 170 within-patient variability (by determining the proportion of α 's posterior distribution that lies above
 zero). There is strong evidence for daptomycin treated patients having greater within-patient

172 variation than control patients with the estimated posterior distribution for α lying essentially above
zero (mean=1.04, 99% credibility interval is (0.677-1.798).

174 **Time Series**

Eight daptomycin patients and six control patients had more than one swab sample collected in 2016.
176 While these additional swab samples do not allow for a comprehensive analysis of within-patient
changes in resistance over time, they make possible a number of interesting case studies of within-
178 patient changes in resistance. Ten clones from each of these additional samples were isolated and
tested for resistance. For standardization, the first 10 clones from the index samples in the previous
180 analysis were used.

In all three patients where a sample was collected before the commencement of daptomycin
182 treatment, the post-treatment sample contains clones that are more resistant than any clones
sampled prior to treatment. The MIC_C for the most resistant clone in the sample immediately prior to
184 and post treatment are: Patient 4 prior = 2.2µg/ml, post = 4.2µg/ml; Patient 87 prior = 1.7µg/ml, post
= 2.7µg/ml; and Patient 150 prior = 0.5µg/ml, post = 20.0µg/ml; Fig 4. Patients 4 and 150 also showed
186 an increase in mean MIC_C (Patient 4: Prior sample mean = 1.69 µg/ml, Index sample mean =
2.86µg/ml, $t = -3.46$, $df = 18$, $p=0.003$; Patient 150: Prior sample mean = 0.32µg/ml, Index sample
188 mean = 13.08µg/ml, $t = -24.99$, $df = 18$, $p<0.001$). Patient 87 had a higher mean in the index sample
but this was not statistically different to the pre-treatment sample mean (Prior sample mean =
190 1.15µg/ml, Index sample mean = 1.42µg/ml, $t = -1.41$, $df = 18$, $p=0.18$).



192 **Fig 4. Within-patient resistance over time.**

194 *Each plot shows patient admission periods, drug doses and resistance of E. faecium clones*
196 *isolated from screening swabs and blood stream infections for an individual patient. Patient*
198 *admission periods are shown as grey blocks, and individual doses of vancomycin (orange),*
200 *linezolid (yellow) and daptomycin (red) are detailed in the bars at the top of the plot. Circles*
show daptomycin resistance (MIC_C) for 10 clones per sample. Each circle is the mean of two
replicates with black circles denoting VR E. faecium, blue circles denoting VS E. faecium and
green circles are E. faecium with discordant vancomycin resistance genotype and phenotype.
Pink diamonds are isolates from VRE faecium blood stream infections.

202 The maintenance of resistance following cessation of daptomycin treatment is highly variable
between patients. In patients where a second sample was collected after the end of treatment (8 out
204 of 12 patients) we see examples of long-term maintenance of resistance in the absence of further
daptomycin exposure in our hospital (Patient 86) and rapid loss of resistance (Patients 4 and 150),
206 which in both examples here is coupled with the presence of vancomycin sensitive *E. faecium* which
was not sampled prior to daptomycin treatment. In two patients there was a slight increase in
208 daptomycin resistance after the cessation of treatment which was combined with a switch from
predominantly vancomycin sensitivity to predominantly vancomycin resistance (Patients 64 and
210 233, see S3 Appendix). In patients where the index sample contained no daptomycin resistant
isolates, little change was observed after treatment ended (Patients 29 and 84, see S3 Appendix).

212 Discussion

Patients exposed to daptomycin have more daptomycin resistant *E. faecium* in their intestines than
214 unexposed patients. This difference is shown by the cross-sectional analysis (Fig 2 and 3 insert) and
the patients with samples before and after daptomycin exposure (Fig 4). The findings support our

216 hypothesis that intravenous daptomycin treatment leads to off-target selection for daptomycin
resistance in the intestinal tract. Further, this finding is consistent with the ecology of this organism,
218 with *E. faecium* most commonly found in the gastrointestinal tract and specifically adapted for
transmission between patients in health care settings [25,26]. Transmission is by the fecal-oral route,
220 which makes drug exposure and selection in the intestinal tract relevant to the risk of transmission
of drug resistant pathogens [27]. Daptomycin concentrations in the gastrointestinal tract are likely
222 in the range that would select for resistance (see below), though this exposure is evidently not
enough to eradicate the bacteria. When the results of this study are added to the ecology of *E. faecium*,
224 it is plausible that off-target selection is a major mode of daptomycin resistance evolution in hospital.
Our study also sheds light on how *E. faecium* evolves in patients exposed to daptomycin. In the
226 absence of daptomycin exposure, few patients had detectable variation in daptomycin resistance (Fig
3). With as little as 3 doses or 3 days of therapy, the variation both within and across patients
228 increased (Fig 3). Thus, there is either low level pre-existing variation in resistance that daptomycin
exposure brings to the fore, or the supply of mutations is high enough during treatment to result in a
230 response to selection. In either case, the response to selection is not limited by supply of resistant
variants. Therefore, strategies such as mutation-prevention dosing which have the explicit goal of
232 preventing the emergence of resistant variants may not work in the intestinal tract [28–32].
Alternative strategies that leverage competition to limit the spread of resistance may offer a way
234 forward but often utilize lower doses [33–35], which raises the potential for conflict between
controlling resistance in the gut, and controlling resistance at the site of infection.
236 The variation in resistance within patients was greater after daptomycin exposure (Fig 3). In fact, all
patients with resistant isolates continued to also contain clones below the resistance threshold. Thus,
238 the raw material required for the population to return to a more susceptible state remained in the
gut. Determining whether this variation in resistance is associated with variation in competitive
240 ability in the intestinal tract, or transmissibility, may help identify better resistance management

strategies. However, managing resistance in the intestinal population is fundamentally different from
242 managing it in the target population. Orders of magnitude more bacteria may be present in the
intestines [36], leading to a larger pool of variation as well as increased competition, both within
244 species, and with other members of the microbiome.

Few data are available on the pharmacokinetics of daptomycin in the intestinal tract. In healthy adult
246 men about 5% of daptomycin is excreted in the stool over 72 hours [37]. Assuming stool water
content of 100-200 ml/day [38] and 500mg daily does (6mg/kg in an average US adult) [39], the
248 daptomycin concentration in the stool could be 125-250ug/ml, well above the MIC for most
Enterococcus. It is unknown whether these calculations represent the drug level experienced by
250 *Enterococcus* in the patient population in which VRE are often found, in whom liver and kidney
dysfunction are common [40,41].

252 Temporal dynamics within patients were highly variable, even among the rather few cases with
repeat sampling. In the three patients where we had a pre-treatment comparison, resistance
254 increased following treatment. Resistance was maintained in some patients even in the absence of
continued drug treatment (patient 86, Fig 4), while in other patients, populations reverted to being
256 entirely sensitive (Patient 4: 17 days and Patient 150: 12 days; Fig 4). Thus, there are likely important
unmeasured factors that influence the resistance dynamics in these patients. Likewise, it would be
258 very interesting to know why daptomycin resistant clones were not detected in all daptomycin-
exposed patients (Fig 2).

260 Daptomycin resistance in *E. faecium* is a growing problem that has persisted despite efforts to
minimize unnecessary drug use and prevent hospital transmission [23]. This study demonstrates
262 that off-target evolutionary dynamics likely play an important role in this problem. In systems like
this, where target and non-target populations are compartmentalized, it will be challenging to
264 identify dosing strategies that can optimally slow resistance emergence in both sites. Novel

interventions that can separate treatment of infection sites from selection in off-target sites are more
266 promising. These include interventions which neutralize the action of the drug in the gastrointestinal
tract [6]. Given that many of the most serious antimicrobial resistance problems are caused by
268 opportunistic pathogens, intervening in the evolutionary dynamics driven by off-target antimicrobial
exposure in highly transmissible gastrointestinal carriage populations could have an outsized impact
270 on the emergence and evolution of hospital-acquired resistant infections.

Materials and Methods

272 **Study Participants**

A case-control study was conducted utilizing perirectal swabs from an infection prevention screening
274 program at Michigan Medicine to determine the impact of intravenous daptomycin treatment on
daptomycin resistance in gut populations of *Enterococcus faecium*. The study was approved by the
276 University of Michigan Institutional Review Board. The initial inclusion criteria (see Fig 1) were all
patients with a VRE positive (*E. faecium* or *E. faecalis*) swab using VRE Select agar (BioRad) in 2016
278 (n=618). Patients included in the daptomycin exposure group had at least three administered doses
of daptomycin (3 days of therapy) in the 6 months prior to the VRE positive swab (14 patients). The
280 control group consisted of patients who had received no daptomycin, and at least six doses of
linezolid (3 days of therapy) in the last 6 months prior to a VRE positive swab (15 patients). For each
282 patient the first sample to meet the inclusion criteria was defined as the index sample. For each index
sample, *Enterococcus* sp. clones were isolated until there were 20 *E. faecium* clones per sample.
284 Samples where no *E. faecium* was isolated after sampling 20 random *Enterococcus* colonies; only one
colony was isolated after sampling 50 random *Enterococcus* colonies; or where no *Enterococcus* was
286 isolated; were excluded from further analysis. The final dataset included 12 patients in the
daptomycin exposure group and 10 patients in the control group. For a further time-series analysis
288 of these patients up to 5 prior samples and all subsequent samples available from these patients in

2016 were tested for the presence of *E. faecium*. 10 random clones per sample were isolated from
290 each of the *E. faecium* positive samples. Finally, we collected isolates from all blood stream infection
(BSI) in these patients.

292 **Ethics Statement**

This study was approved by the University of Michigan Institutional Review Board (ID no.
294 HUM00102282), which determined that informed consent was not required as all samples utilized
were collected for patient treatment purposes.

296 **Strain Isolation**

Perirectal swabs were obtained using E-swabs (BD) as part of the hospital VRE surveillance program.
298 The swabs were first tested in clinical microbiology lab by streaking on VRESelect agar (BioRad) per
manufacturer's recommendations. The swab was discarded and the residual media was stored with
300 glycerol (final concentration 20% v/v) at -80°C. To isolate *E. faecium*, samples were streaked from
the sample stored in glycerol onto Enterococcosel agar (BD BBL) in duplicate and incubated up to
302 72hrs at 37°C. The first 10 colonies from each plate (20 colonies per sample) were re-streaked on
Enterococcosel agar and incubated for 48 – 72hrs at 37°C. One colony from each plate was then
304 streaked on BHI agar (BD BBL) and a vancomycin (30µg/ml Oxoid) disc was placed on each plate to
determine vancomycin resistance. Plates were incubated for 24hrs at 37°C. One clone per plate was
306 stored in BHI +20% glycerol at -80°C.

To confirm the species of *Enterococcus*, a species-specific multiplex PCR was performed using
308 primers for *E. faecium*, *E. faecalis* and VanA, VanB, VanC1 and Van C2/3 [42]. Briefly, 11.25µl PCR
Master Mix (iProof HF, BioRad), 50uM of each primer and 6.45µl water (total volume 22.5µl) per
310 sample were combined. Sample was added as either 2.5µl of bacteria in BHI glycerol taken from tubes
prior to freezing, or 1 colony from a streaked culture of stored bacteria. PCR was performed under
312 the following conditions: 95°C for 4 mins; 30 cycles (98°C for 10 secs, 55°C for 30 secs, 72°C for 30

secs); 72°C for 7 mins. Gels were run for 1hr at 80-100V on 2% Agarose in TAE buffer with 0.1µl/ml
314 SybrSafe.

Isolation steps were repeated until 20 *E. faecium* clones per sample or 10 clones for time-series only
316 samples were isolated. Samples were excluded if more than 40 *Enterococcus* clones were isolated
without any *E. faecium* (20 clones for time-series only samples), or no *Enterococcus* was detected
318 after streaking the sample twice and then plating 80µl of the initial patient sample on Enterococcosel
agar (combined ~10% of the total sample volume). This sampling method resulted in a dataset on
320 species diversity within patients (see S1 Appendix).

Ten patients had *Enterococcus* blood stream infections (BSI) within six months of the index swab
322 sample, and a total of 45 isolates were taken from these patients. Blood samples were cultured in
blood bottles and streaked on Chocolate agar in the clinical microbiology lab. Single colonies were
324 streaked on BHI agar three times and then a single colony was stored in BHI +20% glycerol.

MIC testing

326 MIC testing was performed by the broth microdilution method (BMD) according to CLSI M7
guidelines [43], each samples was tested in duplicate and one of four patient-derived *E. faecium*
328 strains was included on each run as a positive control. All clones were initially tested on plates
containing 2-fold dilutions of daptomycin with final concentrations ranging from 0.125µg/ml to
330 16µg/ml and the optical density (OD) of each well (600nm) was determined by plate reader
(FLUOstar Omega, BMG Labtech). OD values for each dilution series were fitted to a Hill function to
332 determine the concentration at which the hill function curve crossed the cutoff (defined as 2SD above
the mean of the negative control wells (see S4 Appendix), we refer to this value as the computed MIC
334 (MIC_c). If the initial concentration range did not contain at least two concentrations above and below
the cutoff, the assay was repeated on either increased (1µg/ml to 64µg/ml) or decreased
336 (0.0625µg/ml to 4µg/ml) concentrations as appropriate. Individual assays of clones were also

excluded if the Hill curve did not fit the data points well, determined as an MIC_c greater than one 2-
338 fold dilution from the lowest concentration with an OD below the cutoff.

Statistical analysis of MIC_c

340 We analyzed the log₂ of the MIC_c values using Bayesian mixed effect models [44]. Models included a
fixed treatment effect for patients that fulfilled the daptomycin exposure case definition (see above).

342 To quantify the evidence for prior daptomycin exposure increasing MIC_c, we determined the
proportion of the posterior for the fixed “treatment” effect that was above zero. The full model

344 included 23 random effects (one “patient” and 22 “clone” effects) and allowed the distribution of the
“clone” effect to depend on patient. We fit six candidate models which considered different

346 combinations of the random effects. In addition to testing different combinations of the random
effects from the full model, we also considered models where the distribution of the “clone” effect

348 was identical for all patients, and a model where this distribution depended on treatment group (see
Table 1 and S4 Appendix for details). All random effects are assumed to be normally distributed with

350 zero mean and standard deviations estimated using the MCMC program JAGS [45,46]. Uninformative
priors were used (see S4 Appendix Table 2). We ran each model for 20 x 10⁶ iterations with a burn

352 in of 10x10⁶ steps and a thinning interval of 2 x 10³. This resulted in 5x10³ parameter samples
for each model run. This process was repeated to generate four chains, with randomly chosen initial

354 starting values, for each model. Posterior convergence was confirmed in two ways: i) empirical
inspection of the estimated posterior distributions (all four chains resulted in very similar

356 distributions) and ii) the Gelman-Rubin convergence diagnostic (this statistic was essentially 1 for
all parameters, which is consistent with the chains having converged).

358 The models were then compared using the Deviance Information Criterion (DIC) [24]. The relative
fits of the models are summarized using ΔDIC scores which are the differences in DIC between the

360 best model and each alternative model. Although there is no universally agreed threshold for

significance of Δ DIC scores, there is precedent for treating Δ DIC scores greater than 10 as providing
362 very little support for the model [47](similar to rules used for the Akaike Information Criterion (AIC)
[48,49]). The smallest Δ DIC score was 84, indicating that Model 1 is clearly the preferred model. To
364 assess how well the data fit the best model (as selected by DIC comparisons), we used the posterior
distributions of the selected model to generate synthetic data sets and examined the distributions of
366 a number of different summary statistics (see S4 Appendix).

Acknowledgements

368 We thank Amit Pai for discussion about pharmacokinetics.

References

- 370 1. Levy SB, Bonnie M. Antibacterial resistance worldwide: Causes, challenges and responses.
Nat Med. 2004;10: S122–S129. doi:10.1038/nm1145
- 372 2. Zhang L, Huang Y, Zhou Y, Buckley T, Wang H. Antibiotic Administration Routes Significantly
Influence the Levels of Antibiotic Resistance in Gut Microbiota. Antimicrob Agents
374 Chemother. 2013;57: 3659–3666. doi:10.1128/AAC.00670-13
3. Guerrant RL, Wood ISJ, Krongaard L, Reid RA, Hodge RH. Resistance Among Fecal Flora of
376 Patients Taking Sulfamethoxazole-Trimethoprim or Trimethoprim Alone. Antimicrob Agents
Chemother. 1981;19: 33–38.
- 378 4. Kirchner M, Mafura M, Hunt T, Abu-oun M, Nunez-garcia J, Hu Y, et al. Antimicrobial
resistance characteristics and fitness of Gram-negative fecal bacteria from volunteers treated
380 with minocycline or amoxicillin. Front Microbiol. 2014;5: 1–9.
doi:10.3389/fmicb.2014.00722
- 382 5. Centers for Disease Control and Prevention. Antibiotic resistance threats in the United

States, 2013. Antibiot Resist Threat United States, 2013. 2013. doi:CS239559-B

- 384 6. Morley VJ, Woods RJ, Read AF. Bystander selection for antimicrobial resistance: implications
for patient health. *Trends Microbiol.* 2019.
- 386 7. Goessens WHF, Mouton JW, ten Kate MT, Bijl AJ, Ott A, Bakker-Woudenberg IAJM. Role of
ceftazidime dose regimen on the selection of resistant *Enterobacter cloacae* in the intestinal
388 flora of rats treated for an experimental pulmonary infection. *J Antimicrob Chemother.*
2007;59: 507–516. doi:10.1093/jac/dkl529
- 390 8. Vasseur M V, Laurentie M, Rolland J, Perrin-guyomard A, Henri J, Ferran AA, et al. Low or
High Doses of Cefquinome Targeting Low or High Bacterial Inocula Cure *Klebsiella*
392 *pneumoniae* Lung Infections but Differentially Impact the Levels of Antibiotic Resistance in
Fecal Flora. *Antimicrob Agents Chemother.* 2014;58: 1744–1748. doi:10.1128/AAC.02135-
394 13
9. Lhermie G, Dupouy V, Garch F El, Ravinet N, Toutain P, Bousquet-Melou A, et al. Impact of
396 Low and High Doses of Marbofloxacin on the Selection of Resistant *Enterobacteriaceae* in the
Commensal Gut Flora of Young Cattle : Discussion of Data from 2 Study Populations.
398 *Foodborne Pathog Dis.* 2017;14: 152–159. doi:10.1089/fpd.2016.2176
10. Nguyen TT, Chachaty E, Huy C, Cambier C, Gunzburg J De, Mentré F, et al. Correlation
400 between Fecal Concentrations of Ciprofloxacin and Fecal Counts of Resistant
Enterobacteriaceae in Piglets Treated with Ciprofloxacin : toward New Means To Control the
402 Spread of. *Antimicrob Agents Chemother.* 2012;56: 4973–4975. doi:10.1128/AAC.06402-11
11. van der Veen EL, Schilder AGM, Timmers TK, Rovers MM, Fluit AC, Bonten MJ, et al. Effect of
404 long-term trimethoprim / sulfamethoxazole treatment on resistance and integron
prevalence in the intestinal flora : a randomized , double-blind , placebo-controlled trial in
406 children. *J Antimicrob Chemother.* 2009;63: 1011–1016. doi:10.1093/jac/dkp050

12. Fantin B, Duval X, Massias L, Alavoine L, Chau F, Retout S, et al. Ciprofloxacin Dosage and
408 Emergence of Resistance in Human Commensal Bacteria. *J Infect Dis.* 2009;200: 390–398.
doi:10.1086/600122
- 410 13. Sjölund M, Wreiber K, Andersson DI, Blaser MJ, Engstrand L. Long-term persistence of
resistant *Enterococcus* species after antibiotics to eradicate *Helicobacter pylori*. *Ann Intern*
412 *Med.* 2003;139: 483–7. Available: <http://www.ncbi.nlm.nih.gov/pubmed/13679325>
14. Lofmark S, Jernberg C, Jansson JK, Edlund C. Clindamycin-induced enrichment and long-term
414 persistence of resistant *Bacteroides* spp. and resistance genes. *J Antimicrob Chemother.*
2006;58: 1160–1167. doi:10.1093/jac/dkl420
- 416 15. Tedijanto C, Olesen SW, Grad YH, Lipsitch M. Estimating the proportion of bystander
selection for antibiotic resistance among potentially pathogenic bacterial flora. *Proc Natl*
418 *Acad Sci.* 2018;115: E11988–E11995. doi:10.1073/pnas.1810840115
16. Sievert DM, Ricks P, Edwards JR, Patel J, Srinivasan A, Kallen A, et al. Antimicrobial-Resistant
420 Pathogens Associated with Healthcare- Associated Infections : Summary of Data Reported to
the National Healthcare Safety Network at the Centers for Disease Control and Prevention ,
422 2009 – 2010. 2013; 2009–2010. doi:10.1086/668770
17. Alevizakos M, Gaitanidis A, Nasioudis D, Tori K, Flokas ME, Mylonakis E. Colonization With
424 Vancomycin-Resistant Enterococci and Risk for Bloodstream Infection Among Patients With
Malignancy : A Systematic Review and Meta-Analysis. *Open Forum Infect Dis.* 2016; 1–10.
426 doi:10.1093/ofid/ofw246
18. Merck & Co. CUBICIN Prescribing Information. 2018. Available:
428 https://www.merck.com/product/usa/pi_circulars/c/cubicin/cubicin_pi.pdf
19. Woods RJ, Patel TS, Nagel JL, Newton DW, Read AF. Institution-wide and within-patient

- 430 evolution of daptomycin susceptibility in vancomycin-resistant *Enterococcus faecium*
bloodstream infections. *Infect Control Hosp Epidemiol.* 2018;39: 226–228.
- 432 doi:10.1017/ice.2017.279
20. DiPippo AJ, Tverdek FP, Tarrand JJ, Munita JM, Tran TT, Arias CA, et al. Daptomycin non-
434 susceptible *Enterococcus faecium* in leukemia patients: Role of prior daptomycin exposure. *J*
Infect. 2016;74: 243–247. doi:10.1016/j.jinf.2016.11.004
- 436 21. Greene MH, Harris BD, Nesbitt WJ, Watson ML, Wright PW, Talbot TR, et al. Risk Factors and
Outcomes Associated With Acquisition of Daptomycin and Linezolid–Nonsusceptible
438 Vancomycin-Resistant *Enterococcus*. *Open Forum Infect Dis.* 2018;5: 1–5.
doi:10.1093/ofid/ofy185
- 440 22. Egli A, Schmid H, Kuenzli E, Widmer AF, Battegay M, Plagge H, et al. Association of
daptomycin use with resistance development in *Enterococcus faecium* bacteraemia—a 7-
442 year individual and population-based analysis. *Clin Microbiol Infect.* 2017;23: 118.e1-118.e7.
doi:10.1016/j.cmi.2016.10.003
- 444 23. Kinnear CL, Patel TS, Young CL, Marshall V, Newton DW, Read AF, et al. Impact of an
Antimicrobial Stewardship Intervention on Within- and Between-Patient Daptomycin
446 Resistance Evolution in Vancomycin-Resistant *Enterococcus faecium*. *Antimicrob Agents*
Chemother. 2019;63: 1–11. doi:10.1128/aac.01800-18
- 448 24. Plummer M. Penalized loss functions for Bayesian model comparison. *Biostatistics.* 2018;9:
532–539.
- 450 25. Arias CA, Murray BE. The rise of the *Enterococcus*: beyond vancomycin resistance. *Nat Rev*
Microbiol. 2012;10: 266–78. doi:10.1038/nrmicro2761
- 452 26. Lebreton F, Manson AL, Saavedra JT, Straub TJ, Earl AM, Gilmore MS. Tracing the *Enterococci*

- from Paleozoic Origins to the Hospital. *Cell*. 2017;169. doi:10.1016/j.cell.2017.04.027
- 454 27. Raven KE, Gouliouris T, Brodrick H, Coll F, Brown NM, Reynolds R, et al. Complex routes of
nosocomial vancomycin-resistant *Enterococcus faecium* transmission revealed by genome
456 sequencing. *Clin Infect Dis*. 2017;64: 886–893. doi:10.1093/cid/ciw872
28. Drusano GL, Louie A, MacGowan A, Hope W. Suppression of emergence of resistance in
458 pathogenic bacteria: Keeping our powder dry, part 1. *Antimicrob Agents Chemother*.
2016;60: 1183–1193. doi:10.1128/AAC.02231-15
- 460 29. Drusano GL, Hope W, MacGowan A, Louie A. Suppression of emergence of resistance in
pathogenic bacteria: Keeping our powder dry, part 2. *Antimicrob Agents Chemother*.
462 2016;60: 1194–1201. doi:10.1128/AAC.02231-15
30. Yim J, Smith JR, Rybak MJ. Role of Combination Antimicrobial Therapy for Vancomycin-
464 Resistant *Enterococcus faecium* Infections: Review of the Current Evidence.
Pharmacotherapy. 2017;37: 579–592. doi:10.1002/phar.1922
- 466 31. Kelesidis T, Humphries R, Uslan DZ, Pegues DA. Daptomycin nonsusceptible enterococci: An
emerging challenge for clinicians. *Clin Infect Dis*. 2011;52: 228–234. doi:10.1093/cid/ciq113
- 468 32. Humphries RM, Pollett S, Sakoulas G. A Current Perspective on Daptomycin for the Clinical
Microbiologist. *Clin Microbiol Rev*. 2013;26: 759–780. doi:10.1128/CMR.00030-13
- 470 33. Day T, Read AF. Does High-Dose Antimicrobial Chemotherapy Prevent the Evolution of
Resistance? *PLoS Comput Biol*. 2016;12: 1–20. doi:10.1371/journal.pcbi.1004689
- 472 34. Hansen E, Woods RJ, Read AF. How to Use a Chemotherapeutic Agent When Resistance to It
Threatens the Patient. *PLoS Biol*. 2017;15: 1–21. doi:10.1371/journal.pbio.2001110
- 474 35. Read AF, Day T, Huijben S. The evolution of drug resistance and the curious orthodoxy of
aggressive chemotherapy. *Proc Natl Acad Sci U S A*. 2011;108: 10871–10877.

- 476 doi:10.1073/pnas.1100299108
36. Kim S, Covington A, Pamer EG. The intestinal microbiota: Antibiotics, colonization resistance,
478 and enteric pathogens. *Immunol Rev.* 2017;279: 90–105. doi:10.1111/imr.12563
37. Woodworth JR, Nyhart EH, Brier GL, Wolny JD, Black HR. Single-dose pharmacokinetics and
480 antibacterial activity of daptomycin, a new lipopeptide antibiotic, in healthy volunteers.
Antimicrob Agents Chemother. 1992;36: 318–325. doi:10.1128/AAC.36.2.318
- 482 38. Rose C, Parker A, Jefferson B, Cartmell E. The characterization of feces and urine: A review of
the literature to inform advanced treatment technology. *Crit Rev Environ Sci Technol.*
484 2015;45: 1827–1879. doi:10.1080/10643389.2014.1000761
39. Chuang YC, Lin HY, Chen PY, Lin CY, Wang JT, Chang SC. Daptomycin versus linezolid for the
486 treatment of vancomycin-resistant enterococcal bacteraemia: implications of daptomycin
dose. *Clin Microbiol Infect.* 2016;22: 890.e1-890.e7. doi:10.1016/j.cmi.2016.07.018
- 488 40. Chanderraj R, Millar JA, Patel TS, Read AF, Washer L, Kaye KS, et al. Vancomycin-resistant
enterococcus acquisition in a tertiary care hospital: Testing the roles of antibiotic use, proton
490 pump inhibitor use, and colonization pressure. *Open Forum Infect Dis.* 2019;6: 1–6.
doi:10.1093/ofid/ofz139
- 492 41. Verbeeck RK, Musuamba FT. Pharmacokinetics and dosage adjustment in patients with renal
dysfunction. *Eur J Clin Pharmacol.* 2009;65: 757–773. doi:10.1007/s00228-009-0678-8
- 494 42. Dutka-malen S, Evers S, Courvalin P. Detection of Glycopeptide Resistance Genotypes and
Identification to the Species Level of Clinically Relevant Enterococci by PCR. 1995;33: 24–27.
- 496 43. Clinical and Laboratory Standards Institute. *Methods for Dilution Antimicrobial
Susceptibility Tests for Bacteria That Grow Aerobically; Approved Standard - Tenth Edition.*
498 2015. doi:10.4103/0976-237X.91790

44. Gleman A, Hill J. Data analysis using regression and multilevel/hierarchical models.
500 Cambridge University Press; 2009.
45. Depaoli S, Clifton JP, Cobb PR. Just Another Gibbs Sampler (JAGS): Flexible software for
502 MCMC implementation. J Educ Behav Stat. 2016;41: 628–649.
46. Plummer M. JAGS Version 4.3.0 user manual. 2017. Available:
504 <https://usermanual.wiki/Pdf/jagsusermanual.196772563.pdf>
47. Burnham KP, Anderson DR. Model selection and multimodel inference: a practical
506 information-theoretic approach. Springer-Verlag, New York; 2002.
48. Bolker B. Ecological models and data in R. Princeton University Press; 2008.
- 508 49. Kennedy DA, Cairns C, Jones MJ, Bell AS, Read AF. Industry-Wide Surveillance of Marek's
Disease Virus on Commercial Poultry Farms. Avian Dis. 2017;61: 153–164.

510

Supporting Information Captions

512

S1 Appendix. Sample Species Diversity Distribution of *Enterococcus* species with patient

514 samples.

S2 Appendix. Timing and number of doses of daptomycin prior to index sample.

516 **S3 Appendix. Time-series Plots for All Patients**

S4 Appendix. Supplementary Methods and Analysis

518