

Spatial and epidemiological drivers of *P. falciparum* malaria among adults in the Democratic Republic of the Congo

Authors: Molly Deutsch-Feldman¹⁺, Nicholas F. Brazeau¹, Jonathan B. Parr², Kyaw L. Thwai¹, Jérémie Muwonga³, Melchior Kashamuka⁴, Antoinette K. Tshetu⁴, Ozkan Aydemir⁵, Jeffrey A. Bailey⁵, Jessie K. Edwards¹, Robert Verity⁶, Michael Emch^{1,7}, Emily W. Gower¹, Jonathan J. Juliano^{2,8}, Steven R. Meshnick¹

1. Department of Epidemiology, Gillings School of Global Public Health, University of North Carolina, Chapel Hill, USA
2. Division of Infectious Diseases, University of North Carolina at Chapel Hill, USA
3. National AIDS Control Program, Kinshasa, Democratic Republic of Congo
4. Ecole de Santé Publique, Faculté de Médecine, University of Kinshasa, Kinshasa, Democratic Republic of the Congo.
5. Pathology and Laboratory Medicine, Warren Alpert Medical School, Brown University, Providence, RI
6. Medical Research Council Centre for Global Infectious Disease Analysis, Department of Infectious Disease Epidemiology, Imperial College London, UK
7. Department of Geography, University of North Carolina, Chapel Hill, USA
8. Curriculum in Genetics and Molecular Biology, University of North Carolina at Chapel Hill, USA

+corresponding author: mollydf1@live.unc.edu, 301-675-4599

Abstract:

Background: Malaria remains a significant public health problem in sub-Saharan Africa. Adults are frequently infected and may serve as a reservoir for further transmission, yet we know relatively little about risk factors for adult infections. In this study, we assessed malaria risk factors amongst adults using samples from the nationally representative, cross-sectional 2013-2014 Demographic and Health Survey (DHS) conducted in the Democratic Republic of Congo (DRC). We further explored differences in risk factors by urbanicity.

Methods: *Plasmodium falciparum* infection was determined by polymerase chain reaction (PCR). Covariates were drawn from the DHS to model individual, community, and environmental level risk factors for infection. Additionally, we used deep sequencing data to estimate the community-level proportions of drug resistant infections and included these estimates as potential risk factors. All identified factors were assessed for differences in associations by urbanicity.

Results: A total of 16,126 adults were included. Overall prevalence of malaria was 30.3% (SE = 1.1) by PCR; province-level prevalence ranged from 6.7-58.3%. Only 17% of individuals lived in households with at least one bednet for every two people, as recommended by the World Health Organization. Protective factors included increasing within-household bednet coverage (PR = 0.85, 95% CI = 0.76 - 0.95) and modern housing (PR = 0.58, 95% CI = 0.49 - 0.69). Community level protective factors included: increased average education and wealth (PR = 0.77, 95% CI = 0.65-0.91; PR = 0.84, 95% CI = 0.80 - 0.89). Education, wealth, and modern housing showed protective associations in cities but not in rural areas.

Conclusions: The DRC continues to suffer from a high burden of malaria; interventions that target high-risk groups and sustained investment in malaria control are sorely needed. Differences in risk factors by urbanicity may be due to differences in transmission intensity or access to resources.

Key words: DRC, risk factors, adults, urbanicity

Introduction:

Malaria remains an important cause of morbidity and mortality in the Democratic Republic of the Congo (DRC), which is home to 11% of all cases globally¹. Understanding malaria transmission in the DRC is critical for furthering efforts to eliminate malaria in sub-Saharan Africa. In addition to the high disease burden, there is evidence that the DRC acts as a bridge of transmission, connecting parasites from East and West Africa²⁻⁴. To combat transmission and reduce disease burden, it is important to determine risk factors for infection. These factors can be used to identify individuals or groups more likely to become infected and, therefore, more likely to benefit from programmatic interventions. Adult infections remain understudied, as most malaria deaths occur amongst children^{5,6}. However, adults are frequently infected, often asymptotically, and may serve as a reservoir for transmission^{7,8}. Yet, we know very little about risk factors for infection in adults. In this study, we assessed malaria risk factors amongst adults using data from over 16,000 participants from the nationally representative 2013-2014 Demographic and Health Survey (DHS) conducted in the DRC, the largest and most recent health survey conducted in the country.

A small number of studies performed in the DRC have identified important risk factors for infection^{4,9,10}. These studies showed that increasing age, wealth, and individual bed-net use are protective, as are increasing community level bed-net use, lower average temperature and higher altitude⁹⁻¹². However, these studies included only children under the age of five^{9,10}, or were small and geographically limited^{11,12}. A study of adults in the DRC conducted using data from the 2007 DHS identified several risk factors, such as younger age, male sex, and lower individual and community level wealth¹³; however, no nationally representative risk factor studies of adults have been conducted since.

In this study we evaluated current individual, household, community, and environmental risk factors for malaria amongst adults. Additionally, because increasing antimalarial drug resistance is a growing concern in the DRC, we sought to understand the relationship between community-level resistance and infection prevalence^{14,15}. Similarly, the association between increasing antimalarial use and malaria prevalence amongst adults has not been studied in the DRC. Understanding the role of these factors is critical for determining drivers of malaria infection. The different scales of the factors demonstrate the various levels at which malaria interventions can be targeted.

This study builds on previous work in the DRC by evaluating the role of urbanization on risk factors for infection. Understanding the effect of urbanization on malaria transmission is a critical part of intervention planning¹⁶⁻¹⁸. Unlike other infectious diseases, which thrive in cities due to increased population density, malaria transmission is often lower in urban areas as compared to rural areas^{19,20}. This is due to several factors, including reduced vector populations, lower biting rates, and better access to therapeutics¹⁹. As a result, the effects of malaria control programs have been shown to differ between cities and rural areas. Multiple studies conducted in Nigeria and Benin found that bednet ownership and use were higher amongst rural populations than urban²¹⁻²³. Past work conducted in Liberia determined that the effects of bednets differed between the settings, with increasing community level bednet coverage being protective in urban areas but displaying no effect in rural areas²⁴. We explored

this relationship in the DRC by assessing whether the effects of various risk factors for infection differed between individuals in urban versus rural areas.

The findings from this study can be used to identify individuals and communities at higher risk for malaria infection in the DRC. They also shed light on differences in the epidemiology of malaria between urban and rural settings.

Methods:

Study population: The data from this study are drawn from the 2013-2014 Demographic Health Surveys (DHS) conducted in the DRC. The DHS Program, run by USAID in conjunction with local governments, carries out periodic cross-sectional surveys in over 90 countries²⁵. In the DRC, the DHS was conducted by the coordinated efforts of several governmental ministries. Using a nationally-representative randomized cluster sampling method, sampling cluster sites were first selected from a map of enumerated areas across the country with the probability of selection proportional to the size (number of households) of the cluster²⁶. Next, households were randomly selected for inclusion from within clusters²⁷. Cluster sizes differed between urban and rural areas with approximately 5 – 15 more households included in rural areas²⁷. To account for this nested cluster sampling strategy when analyzing the data, each cluster was assigned a sampling weight. DHS survey conductors visited selected households, obtained consent, and administered an extensive questionnaire covering a broad range of topics including nutrition, education, health history, and infectious diseases status²⁶. Blood samples were collected on filter paper for HIV testing; a second blood spot was also shipped to The University of North Carolina for molecular testing of malaria.

A total of 18,257 adults from 12,549 households were included and asked to provide blood samples. This included 9,601 women (ages 15-49) and 8,656 men (ages 15-59). In addition, 9,790 children (ages 6 months to 5 years) were part of the survey. Although they were not included in this analysis, they have been examined previously^{9,14,28}.

Risk factor selection: Potential risk factors *P. falciparum* infection were determined by consulting previous studies and based on biological plausibility. We selected individual, household, and cluster (community) level risk factors that have demonstrated associations with malaria risk^{9,10,13}. Individual factors included age, biological sex, HIV infection status, education, and wealth index. The DHS Program calculates wealth index as a composite variable based on each household's assets and housing materials²⁹. Using Principal Components Analysis (PCA), participants were then grouped into wealth quintiles: poorest, poor, middle, rich, and richest²⁹. We also assessed bednet use, which was determined by whether the individual reported sleeping under a long lasting insecticide net (LLIN) the previous night. At the household level, we constructed a "net ratio" variable by dividing the number of total nets per household by the number of individuals within the household. This was then dichotomized into ratios of less than 0.5 versus those of 0.5 or higher (ie: at least one net for every two household members). We also created a composite "housing materials" variable, dichotomized as either traditional or

modern, based on data from the roof, wall, and floor material variables (further details are available in the Supplemental Text)³⁰. Cluster level factors included proportion reporting LLIN use, median wealth index, and median education level. We also assessed average annual precipitation and temperature. Data were drawn from the DHS questionnaire as well as from the DHS Program, which collects a range of environmental and geological data³¹.

PCR diagnosis: The primary outcome for this study was *P. falciparum* malaria infection as determined by real-time PCR. Whole blood collected by finger-prick was spotted onto Whatman filter paper, dried at ambient temperature, and initially stored with dessicant at -80C in Kinshasa until punching (one 6mm punch per subject) and shipment to UNC. DNA was extracted from the blood spots using a Chelex extraction assay and used for PCR testing³². The PCR assay detects the *P. falciparum* lactate dehydrogenase gene (*pfl dh*) with a limit of detection of 5-10 parasites/mL^{33,34}. The human beta-tubulin (HumTuBB) gene was used as a positive control, and any samples that failed to amplify HumTuBB were excluded. The duplexed *pfl dh* and HumTuBB quantitative PCR assay was performed using reaction conditions, primers, and quality control measures for high-throughput PCR exactly as previously described³⁵. All samples were run in duplicate. Samples that amplified *pfl dh* in only a single replicate were considered negative if the cycle threshold value was higher than 38. All laboratory assays were completed at the University of North Carolina at Chapel Hill.

Genetic analyses: Community-level drug resistance was determined using second-generation sequencing data obtained using molecular inversion probes (MIPs) that target known molecular markers of resistance to antimalarial drugs¹⁴. MIPs are a technology for obtaining highly multiplexed deep sequencing data that have recently been applied to *Plasmodia* species¹⁴. Using previously generated sequencing data from 1,065 children enrolled in the 2013-14 DRC DHS^{14,15}, we assessed single nucleotide polymorphisms (SNPs) of the *pfdhps* (A437G, K540E, and A581G) and *pfcr t* (K76T) genes known to be associated with sulfadoxine-pyramethamine (SP) and chloroquine resistance, respectively^{14,36-38}. We used these individual-level data to estimate cluster-level prevalence for each SNP using the *PrevMap* package in R, which fits a spatial model using a Gaussian Process³⁹. We fit the model to generate estimates of the underlying allele frequency distribution using maximum likelihood and running 10,000 simulations. Further model details are available in the Supplemental Text.

Urban/rural classification: Potential misclassification of urbanicity is a concern in large surveys with complex sampling frames⁴⁰. In order to minimize such misclassification, we conducted a PCA incorporating variables with a demonstrated relationship to urbanicity^{31,41,42}. These variables were: degree of built environment, nighttime lights, total population as of 2014, population density as of 2014, and estimated travel time to the nearest city. The DHS collects these data from a variety of remote sensing and modeling databases including: WorldPop, the Joint Research Centre, and the Climate Research Unit at the University of East Anglia^{31,43-45}. The DHS collects these variables for each cluster; all variables were scaled and log transformed for the analysis. From the PCA, we extracted the values for the first principal component (PC) for each cluster, and generated a new urban/rural variable by dichotomizing the PC1 value at the 75% percentile (e.g., urbanicity is represented by the upper quartile of

PC1). The new measure of urbanicity was used to assess differences in risk factors between urban and rural areas.

Modeling and statistical analyses: All analyses were performed using the R statistical platform v. 3.5.2⁴⁶. We assessed the relationship between each risk factor and PCR detectable malaria infection using bivariate log-binomial regression models (i.e. not adjusted for other variables) fit using generalized estimating equations to estimate prevalence ratios. We used bivariate models as the aim was to assess marginal associations, not causal relationships. To account for the cluster sampling method, we included the DHS sampling weights using the *survey* package in R⁴⁷. Each identified risk factor was then further assessed to determine if the association with malaria prevalence differed by urban/rural status by including the urban variable and an interaction term between each factor and the urban variable in the model. In general, variables were included in the model in the form that the data were collected (i.e.: categorical variables kept as categorical), though some continuous variables were scaled and proportions were logit transformed. As done previously for MIP genetic data, we generated spatially smoothed prevalence and standard error estimates using the *PrevMap* package (**Supplemental Text**)³⁹.

In addition to the risk factor modeling we conducted several subsequent analyses. As the DHS asks multiple questions regarding bednet use, we conducted a sensitivity analysis to compare various coding methods for net use. Further details are presented in the Supplementary Text. We also assessed whether the association between individual net use and malaria risk differed across categories of overall cluster malaria prevalence. For this analysis we used previously published data from children included in the 2013-2014 DHS to determine community level prevalence in order to avoid including the outcome data of adult infections from 2013 in determining cluster level prevalences^{9,28}.

Patient and Public Involvement: This research was conducted without patient involvement

Results:

Our analysis included 16,126 adults from the original 18,257 initially selected for inclusion in the DHS. Individuals were sampled from 533 geographically dispersed clusters; GPS data were missing for 44 clusters, resulting in 489 clusters for analysis (**Figure 1**). After final data processing, 16,363 individuals had complete PCR and DHS covariate data. Two-hundred and thirty-seven individuals were not considered “du jure” (members of the sampled household, rather than visitors who slept in the household the previous night⁴⁸) and, thus, were not included in the analysis, resulting in a final data set of 16,126 individuals (**Figure 2**). Overall PCR prevalence of *P. falciparum* infection was 30.3% (SE = 1.1). The results of the *PrevMap* analysis demonstrated the high spatial heterogeneity of infection; community prevalence estimates ranged from 0-76% (**Figure 3**). The map of the model standard errors indicated low variance in the estimates across the DRC (**Figure S1**). Prevalence estimates by province ranged from 6.7% in Nord-Kivu to 58.3% in Bas-Uele (**Supplementary Table 1**).

Reported bednet use was low; though 75% of adults reported owning a LLIN, only 54% reported sleeping under a net the previous night. The average ratio of nets per household member was 0.27, indicating approximately one net per four household members. Only 17% of adults lived in houses with at least one net per two household members. Baseline characteristics of study participants are presented in **Table 1**.

Risk factor analysis:

Several covariates were associated with prevalence of malaria infection (**Table 2**). Individual protective factors included: increasing age, female sex, increasing education, and increasing wealth index. Protective household factors included living in a house made of modern housing materials and having a metal roof. At the cluster-level, increasing median wealth index was protective. Higher use of SP amongst pregnant women at the cluster level was also found to be associated with lower prevalence of malaria. Drug-resistance mutations were more common in low-prevalence clusters. Increasing average temperature was associated with increased prevalence of infection. Full risk factor modeling results are available in Table 2.

We found a modest protective association of individual LLIN use and no effect of increasing community LLIN use, in contrast to previous findings in the DRC⁹. At the household level, a net ratio greater than 0.5 (i.e. at least one net per two household individuals) was protective, compared to households with a lower ratio. When we stratified individual net use by insecticide type, we observed a protective effect of deltamethrin-treated nets and a signal for protection with alphacypermethrin nets. There was no significant protective effect of permethrin-treated nets, a finding that has been previously reported for children in the DRC⁹. Restricting LLIN use to only those who had reported using a net treated with deltamethrin or alphacypermethrin, we found a slight protective effect of increasing community level net use. The sensitivity analysis of net use showed no differences between measurement options or the coding choice for net use (**Supplemental Figure 1**). A comparison of individual LLIN net use between adults and children included in the 2013-2014 DHS indicated similar protective effects (**Supplementary Table 2**).

Analysis of Associations by Urban/Rural status:

There were several socioeconomic-related risk factors whose association varied by urban/rural status (**Figure 4**). These included individual level wealth, with increasing wealth showing a protective effect in urban areas but not rural. A similar trend was observed for increasing individual level education. Additionally, both modern housing and metal roofs were protective in urban areas but not in rural areas. Cluster level wealth demonstrated problematically high collinearity with urbanicity and thus could not be modeled. Full numeric results from this analysis are presented in **Supplemental Table 1**.

Overall, urbanicity did not impact the association between LLIN use and malaria prevalence, either at the individual or cluster level. However, when we subset LLIN use to only deltamethrin and alphacypermethrin nets, the only insecticides that demonstrated a protective effect in the initial analyses, we observed that increasing individual and community use of these nets were more protective in rural areas than in urban areas. Similarly, the analysis of LLIN use

by cluster-level prevalence found that individual net use was more protective in areas of higher overall malaria prevalence (**Figure 5**).

Discussion:

In this study, utilizing data from the largest and most recent nationally-representative health survey conducted in the DRC, we found a high national prevalence of *P. falciparum* malaria (30%) amongst adults. We also found high spatial heterogeneity. Community level prevalence estimates reached as high as 76%. Malaria is often considered a pediatric disease as the majority of deaths occur amongst children⁵. However, our findings emphasize that the burden of disease amongst adults is high in the DRC and highlight the importance of adult infections in malaria epidemiology. The high level of spatial heterogeneity across the country underscores the need to study malaria on a sub-national scale. The spatial distribution of infections amongst adults matches that of infections amongst children included in the 2013-2014 DHS, indicating similar underlying spatial processes⁴⁹.

The national prevalence estimate of 30% amongst adults is similar to that from the 2007 DHS, suggesting a need for increased investment in malaria control in the DRC and further understanding of drivers of transmission^{1,13}. We observed that the prevalence is unchanged from 2007 despite increases in LLIN coverage and the number of individuals being tested and treated for infection⁵⁰. Thus, understanding malaria risk factors in all age groups remains critical for the design and implementation of effective interventions. Several risk factors identified in an analysis of the 2007 DHS data were also associated with increased infection prevalence in this study, highlighting their continued importance in the epidemiology of malaria. These include younger age, male sex, and lower community level wealth¹³. The factors identified in this study, many of which have also been identified in other countries⁵¹⁻⁵³, are particularly important for identifying infected individuals in the DRC, as many adult infections are asymptomatic and often go undetected⁸. Thus, targeting malaria interventions towards younger adults, men, and poorer communities could maximize their impact.

In this study, we found that individuals living in households with a bednet ratio greater than 0.5, ie: at least one net for every two household members, had lower prevalence of malaria. This ratio is recommended by the WHO in order to ensure a sufficient number of nets for household members⁵⁴. Though previous studies have assessed the role of increasing community level net use, the effect of within household “net coverage” has not been studied, to our knowledge. Our findings demonstrate the importance the number of nets within a household and support the WHO recommendation. However, less than 20% of survey respondents lived in households with a net ratio of 0.5 or higher. Thus, the DRC is far from achieving the WHO recommendation. It is critical that future bednet distribution campaigns ensure that enough nets are provided to each household.

In this analysis we did not observe the overall protective effect of community bednet use that has been previously demonstrated amongst children in the DRC, though there was a protective effect of increasing community use of deltamethrin and alphacypermethrin treated nets⁹. As mentioned, we did see a protective effect of increasing within household net coverage, which may be a more important factor for reducing infection than community net use. Our findings of greater protection from nets in higher prevalence areas and in rural areas

are supported by a recent meta-analysis that found increasing community malaria prevalence associated with a greater protective effect of LLIN use (OR = 0.80)⁵⁵. Thus, bednet distribution campaigns may be more successful in rural or generally higher prevalence areas than in cities.

The findings from the genetic analysis of mutations associated with SP and chloroquine resistance indicate that areas of higher prevalence of drug resistance had lower prevalence of malaria infection. While this is a marginal association and does not reflect a causal relationship, this could be due to the amount of anti-malarial drug use, leading to lower overall prevalence of malaria but increased resistance through increased selective pressure. Future studies should aim to investigate the causal effect of increasing community level drug resistance on malaria risk; however, this was not the primary aim of this study. Additionally, cluster-level SNP prevalences were modeled estimates generated using data from children and thus may not be representative of overall community level prevalence.

Modern housing and metal roofing were both associated with lower prevalence of malaria, though the association was more pronounced in urban areas than in rural areas. The effect of metal roofing agrees with findings from a recent study conducted in the Gambia, which found 38% lower mosquito survival and lower malaria prevalence amongst villages with higher proportions of metal roofs⁵⁶. The authors of the study propose that this is due to the higher temperatures of metal roofs during the day, leading to lower mosquito survival. The present findings suggest that housing improvements may help reduce malaria risk, either directly as proposed by the Gambian study, or indirectly through overall improvements in living conditions and socioeconomic status.

This study also highlights differences in the epidemiology of malaria between urban and rural areas, confirming the need to tailor interventions to different populations in cities versus rural areas. Increasing wealth and education are both highly protective in urban areas but not in rural areas. This may be a result of increased access to prevention and treatment methods in urban areas, as has been observed in other countries. A study from Equatorial Guinea found individuals in rural areas waited longer to seek treatment for malaria infections compared to those in urban areas, and were more likely to be treated at home rather than in a health facility⁵⁷. These results also agree with findings from previous studies that poor individuals living in urban areas have similar health risks to the general rural population⁵⁸. Thus, in urban areas, the malaria positive population is poorer and less educated than those infected in rural areas. Malaria control programs should take these differences in high-risk populations into account, targeting poorer or less educated individuals in cities and ensuring that interventions are accessible for these populations. Conversely, interventions in rural areas need to be more widespread and accessible to a more diverse population.

This study has several strengths. First, it uses nationally-representative, population-based data from over 16,000 individuals, the largest health survey conducted in the DRC. This allows us to make inferences regarding the country as a whole. Other recent malaria risk factor studies have fewer individuals or are conducted in a smaller geographic area^{11,12}. Second, we determined malaria infection using high-throughput real-time PCR, the most sensitive method for diagnosing infection²⁸. Third, it leverages country-wide drug resistance genotyping data to inform community-level epidemiological analysis. Lastly, this study incorporates multiple types of data including: survey, molecular, deep sequencing drug resistance, and geospatial data collected at the individual, household, community, and environmental level. This allowed us to

demonstrate the different scales of malaria risk factors; control programs should aim to intervene at each of these levels.

The findings from this study are subject to limitations. Several of the covariates included in the study were obtained from self-reports, including LLIN usage. While self-reported data is subject to recall bias, the DHS questionnaire asks multiple questions regarding net use that allowed us to assess bias. The sensitivity analysis comparing these questions indicated no difference in modeling results between the questions, providing confidence that bias from self-reports is minimal. Secondly, this analysis evaluated marginal associations and thus the findings cannot be interpreted as causal effects. However, the associations are useful for identifying and targeting interventions to higher risk individuals and groups such as younger, less educated men. Additionally, as the DHS is a cross-sectional survey, we did not assess the effects of seasonality. Finally, we could not directly assess the epidemiology of symptomatic malaria in the DRC as DHS surveys do not sample health facilities.

Conclusion:

This study evaluated risk factors for *P. falciparum* infection amongst adults in the DRC using data from the nationally representative, population based DHS survey. Overall prevalence of infection was high, 30%, and grossly unchanged from the prior 2007 survey. We observed high spatial heterogeneity across the country and identified individual, household, and community-level risk factors for malaria such as male sex, modern housing, and increasing within household net coverage. These findings support the need for sustained investment in malaria control in the DRC and can be used to develop targeted interventions with maximal impact.

List of Abbreviations:

DRC = Democratic Republic of the Congo
DHS = Demographic and Health Survey
PCR = polymerase chain reaction
LLIN = long-lasting insecticide treated net
SNP = single nucleotide polymorphism
MIP = molecular inversion probe
PCA = principal components analysis
SP = Sulfadoxine/pyrimethamine

DISCLOSURES

Ethics Approval and Consent to Participate: This study was approved by the Internal Review Board at The University of North Carolina, Chapel Hill and at the Kinshasa School of Public Health. Informed consent was obtained from each individual age 18 or older, or from a parent or legal guardian for children and adolescents under age 18.

Consent for Publication: Not Applicable

Availability of Data and Materials: Data used in this study from the Demographic Health Surveys Program are available upon request at (<https://dhsprogram.com/what-we-do/survey/survey-display-421.cfm>)⁵⁹. Raw sequencing data is publicly available through the NCBI SRA (Ascension number: PRJNA545347). Molecular data included in this study are available from the corresponding author upon reasonable request.

Competing Interests: JBP reports support from the World Health Organization; JPB and SRM report non-financial support from Abbott Laboratories, which has performed laboratory testing in-kind as part of their hepatitis research, outside the submitted work.

Funding: This study was supported by R01AI107949 to SRM and T32AI070114 to MDF from the National Institutes of Health National Institute for Allergy and Infectious Disease. This study was also supported by a Burroughs Wellcome Fund-American Society for Tropical Medicine and Hygiene fellowship to JBP and R01AI139520 to JAB. RV is jointly funded by the UK Medical Research Council (MRC) and the UK Department for International Development (DFID) under the MRC/DFID Concordat agreement and is also part of the EDCTP2 programme supported by the European Union.

Author Contributions: MDF conducted the analyses and drafted the manuscript. NFB provided assistance with data management and the risk factor analyses. JBP and KLT conducted the PCR assays. JM supervised blood spot processing. MK and AT oversaw sample management. OA and

JAB generated and processed the sequencing data. JE, RV, ME, and EG provided guidance with the study design and provided analytical assistance. JJJ and SRM conceived of the study and oversaw study set up. All authors edited the manuscript and approved the final draft.

Acknowledgements: The authors would like to thank all the study participants and all study team members. The authors would also like to thank Stephanie Doctor for assistance with sample processing.

Table 1: Descriptive statistics of the study population by *P. falciparum* PCR status

	PCR-positive	PCR-negative
Unweighted total number*	5,372	10,754
Weighted Proportion**	30.3%	69.7%
<i>Individual Level**:</i>		
Median Age (IQR)	26 (19-36)	29 (21 - 38)
Number Female (%)	2,360 (47.6)	6,202 (54.4)
Number HIV positive (%)	30 (0.6)	126 (1.1)
Education Category (%)		
No school	515 (10.4)	1,140 (10.0)
Primary school	1,618 (32.6)	3,346 (29.4)
Secondary school	2,662 (53.8)	6,079 (53.4)
Higher than secondary	156 (3.2)	826 (7.2)
Owns a bednet (%)	3,615 (72.9)	8,589 (75.3)
Slept under bednet previous night (%)	2,462 (49.7)	6,422 (56.3)
Wealth Category (%)		
Poorest	1,059 (21.4)	1,840 (16.1)
Poor	1,030 (20.8)	2,014 (17.7)
Middle	1,122 (22.6)	2,124 (18.6)

Rich	1,041 (21.0)	2,249 (19.7)
Richest	704 (14.2)	3,178 (27.9)
<hr/> Household Level: <hr/>		
Average number of bednets per person (SE)	0.25 (0.07)	0.27 (0.08)
Modern Housing (%)	593 (12.0)	2,514 (22.1)
Metal Roofing (%)	1,564 (31.6)	5,147 (45.1)
<hr/> Cluster-level**: <hr/>		
Mean Age (IQR)	30.0 (28.5 – 31.3)	29.7 (28.2 – 31.0)
Urban	1,329 (26.8)	4,297 (37.7)
Median Education (IQR)	2 (1-2)	2 (1-2)
Median Wealth Score (IQR)	3 (2-4)	3 (2-5)
% Drug Resistance***:		
<i>Any pfdhps</i>	92.2 (0.7)	95.1 (0.4)
<i>pfdhps</i> K540E	23.5 (1.7)	32.9 (2.5)
<i>pfdhps</i> A581G	1.8 (0.1)	3.9 (0.4)
<i>pfcr</i> t K76T	56.0 (2.3)	64.8 (1.9)
% Net Ownership (SE)	73.7 (1.3)	75.0 (1.5)
% Net Usage (SE)	52.7 (1.4)	54.6 (1.6)
% SP use amongst pregnant women (SE)	25.3 (1.3)	28.0 (1.1)

*These are unweighted raw numbers and do not represent the sum of the subsequent values in the table as subsequent values incorporate sample weights

**Proportions and numbers with sampling weights applied

***estimates generated using previously published data^{14,15}

Table 2: Risk factor analysis results

Variable	Prevalence Ratio	95% Confidence Interval	p-value [†]
<i>Individual Level:</i>			
Age (scaled)	0.86	0.83 – 0.89	<0.001
Female Sex	0.83	0.78 – 0.88	<0.001
HIV positive	0.63	0.38 - 1.03	0.067
Education Category:			
No school (REF)	--	--	--
Primary school	1.05	0.92 – 1.18	0.473
Secondary school	0.98	0.85 – 1.13	0.761
Higher than secondary	0.51	0.38 – 0.70	<0.001
Wealth Category:			
Poorest (REF)	--	--	--
Poor	0.93	0.83 – 1.04	0.189
Middle	0.95	0.85 – 1.06	0.330
Rich	0.87	0.73 – 1.02	0.088
Richest	0.50	0.40 – 0.61	<0.001
Owens a Net	0.92	0.82 – 1.03	0.138
Slept under LLIN	0.83	0.76 – 0.91	<0.001
Net type:			

No net (REF)	--	--	--
Permethrin	0.94	0.78 – 1.12	0.477
Alphacypermethrin	0.68	0.38 – 1.22	0.198
Deltamethrin	0.81	0.73 – 0.91	<0.001
<hr/> Household level: <hr/>			
Net ratio*	0.85	0.76 - 0.95	0.003
Modern Housing	0.58	0.49 – 0.69	<0.001
Metal Roofing	0.66	0.58 - 0.75	<0.001
<hr/> Cluster Level: <hr/>			
Urban	0.70	0.37 - 0.83	<0.001
LLIN ownership**	0.97	0.93 – 1.00	0.058
LLIN usage**	0.98	0.92 – 1.04	0.457
LLIN usage (deltamethrin and alphacypermethrin nets only)**	0.95	0.90 - 1.00	0.040
Education	0.91	0.79 – 1.04	0.174
Wealth	0.87	0.83 – 0.92	<0.001
Precipitation (scaled)	1.06	0.97 – 1.17	0.179
Temperature (scaled)	1.32	1.23 - 1.42	<0.001
SP ⁺⁺ use amongst pregnant women**	0.92	0.89 - 0.96	<0.001
Drug Resistance Prevalence**			

<i>Pfdhps</i> A437G	0.88	0.85 – 0.91	<0.001
<i>pfdhps</i> K540E	0.95	0.93 – 0.98	<0.001
<i>pfdhps</i> A581G	0.89	0.85 – 0.94	<0.001
<i>pfCRT</i> K76T	0.93	0.91 – 0.96	<0.001

[†] P- value of the test of the null hypothesis that the PR = 1

^{††} Sulfadoxine/pyrimethamine

* Ratio ≥ 0.5 vs < 0.5

** logit transformed

Figure 1: Sites of 2013-2014 DHS sampling clusters

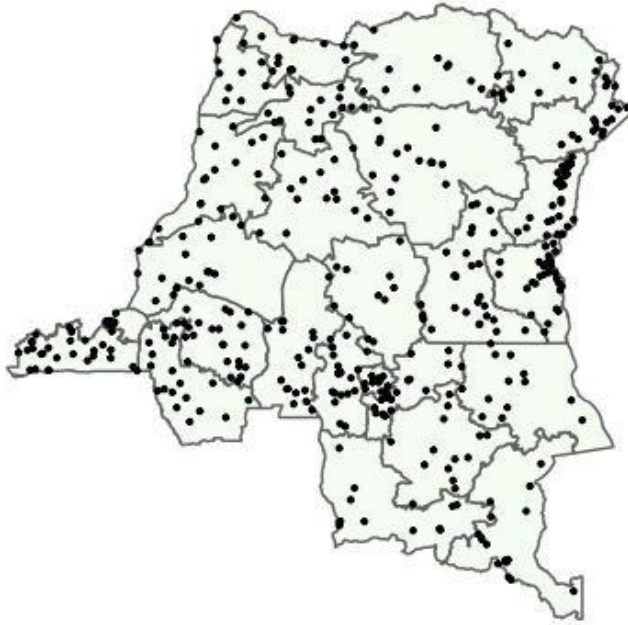


Figure 2: Flowchart of samples included in analysis

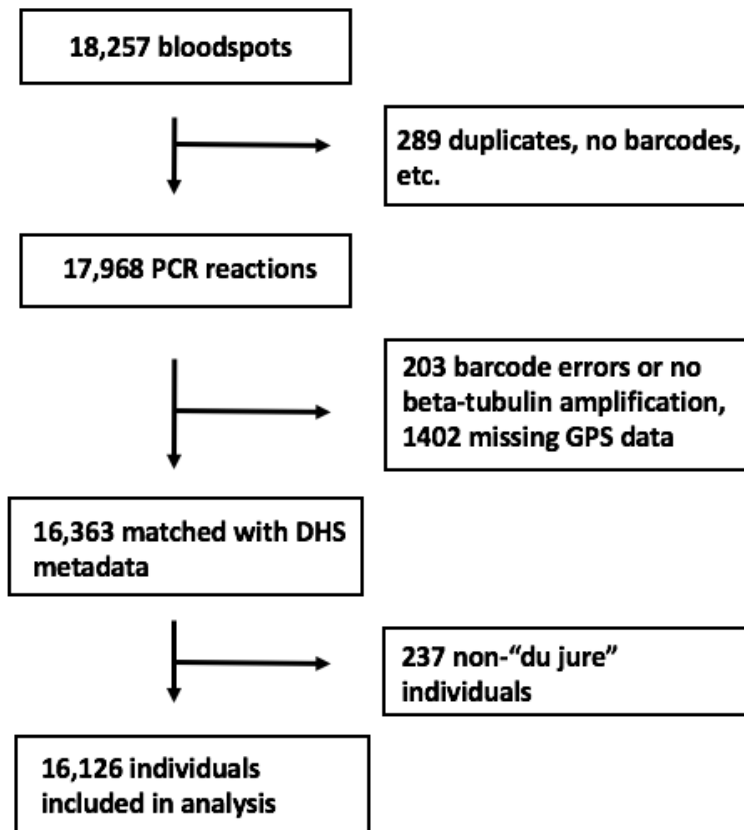


Figure 3: Map of predicted *P. falciparum* PCR prevalence estimates. Smoothed prevalence estimates, incorporating the sampling weights, were generated using the *PrevMap* package in R³⁹. Predicted proportions range from 0-0.76.

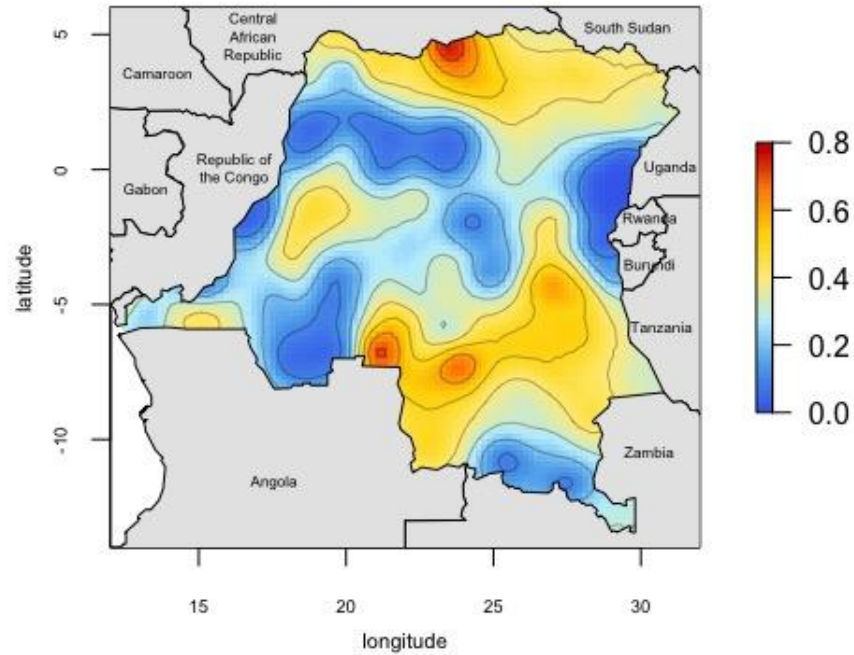
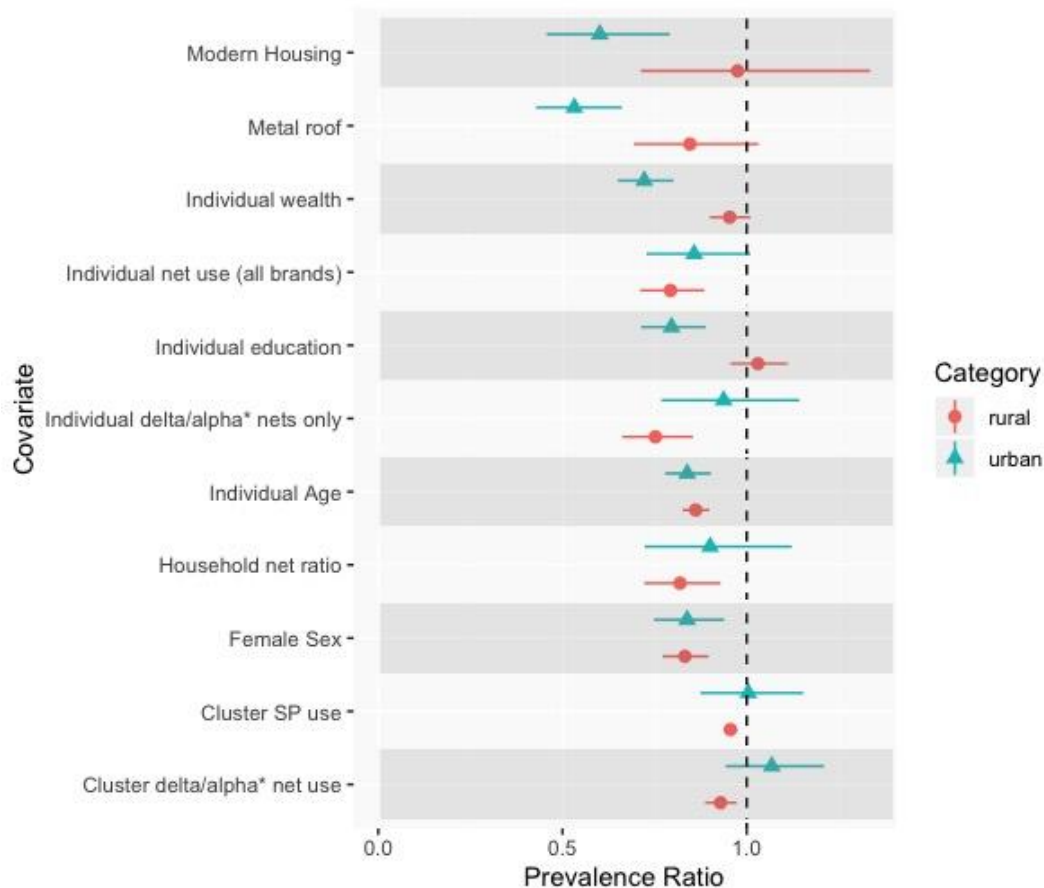
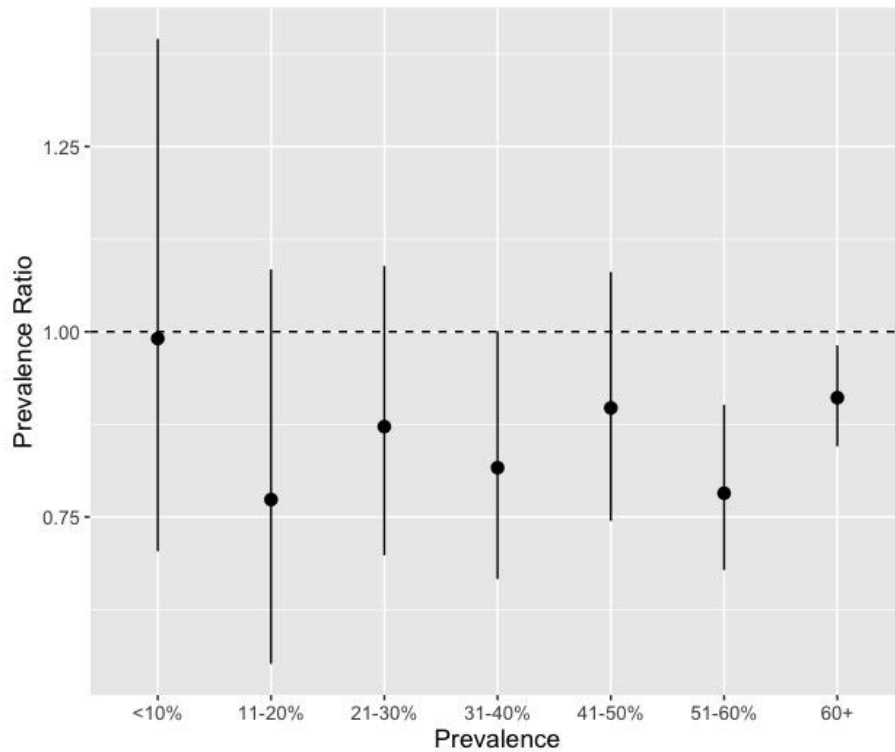


Figure 4 : Results of the analysis comparing risk factor effects between urban versus rural areas. Prevalence ratios and confidence intervals by urban status are presented for each risk factor. Urban results are presented with blue triangles, rural results with red circles. Differences in point estimates indicate differences of the prevalence ratio by urbanicity. The associations of several factors, such as modern housing, education, and wealth, demonstrated differences between urban and rural areas. The null value (Prevalence Ratio = 1) is indicated with a vertical dashed line.



*deltamethrin and alphacypermethrin net use only

Figure 5: Effect of individual bednet use by cluster-level malaria prevalence. We used previously published data from children included in the 2013-2014 Demographic and Health Survey in order to determine cluster-level prevalence²⁸. Individual bednet use was more protective in clusters with higher malaria prevalence. The null value (Prevalence Ratio = 1) is indicated with a horizontal dashed line.



References:

1. The World Health Organization. *Democratic Republic of the Congo.*; 2016.
2. Verity R, Aydemir O, Brazeau NF, et al. The Impact of Antimalarial Resistance on the Genetic Structure of *Plasmodium falciparum* in the DRC. *bioRxiv*. January 2019:656561.
3. Verity R, Hathaway NJ, Waltmann A, et al. *Plasmodium falciparum* genetic variation of var2csa in the Democratic Republic of the Congo. *Malar J*. 2018;17(1):1-8.
4. Taylor SM, Messina JP, Hand CC, et al. Molecular malaria epidemiology: Mapping and burden estimates for the democratic Republic of the Congo, 2007. *PLoS One*. 2011;6(1). doi:10.1371/journal.pone.0016420
5. The World Health Organization. *Key Points: World Malaria Report 2017*. The World Health Organization; 2017.
6. Jenkins R, Omollo R, Ongecha M, et al. Prevalence of malaria parasites in adults and its determinants in malaria endemic area of Kisumu County, Kenya. *Malar J*. 2015;14:263.
7. Lindblade KA, Steinhardt L, Samuels A, Kachur SP, Slutsker L. The silent threat: asymptomatic parasitemia and malaria transmission. *Expert Rev Anti Infect Ther*. 2014;11(6):623-639.
8. Lin JT, Saunders DL, Meshnick SR. The role of submicroscopic parasitemia in malaria transmission: what is the evidence? *Trends Parasitol*. 2014;30(4):183-190.
9. Levitz L, Janko M, Mwandagalirwa K, et al. Effect of individual and community-level bed net usage on malaria prevalence among under-fives in the Democratic Republic of Congo. *Malar J*. 2018;17(1).
10. Janko M, Irish SR, Reich BJ, et al. The links between agriculture, Anopheles mosquitoes, and malaria risk in children younger than 5 years in the Democratic Republic of the Congo: a population-based, cross-sectional, spatial study. *The Lancet Planetary Health*. 2018;2(2):PE74-E82.
11. Ferrari G, Ntuku HMT, Ross A, et al. Identifying risk factors for *Plasmodium* infection and anaemia in Kinshasa, Democratic Republic of Congo. *Malar J*. 2016;15:362.
12. Ngatu NR, Kanbara S, Renzaho A, et al. Environmental and sociodemographic factors associated with household malaria burden in the Congo. *Malar J*. 2019;18(1):53.
13. Messina JP, Taylor SM, Meshnick SR, et al. Population, behavioural and environmental drivers of malaria prevalence in the Democratic Republic of Congo. *Malar J*. 2011;10(1):161.
14. Aydemir O, Janko M, Hathaway N, et al. Drug Resistance and Population Structure of

- Plasmodium falciparum Across the Democratic Republic of Congo using high-throughput Molecular Inversion Probes. *J Infect Dis*. 2018.
15. Deutsch-Feldman M, Aydemir O, Carrel M, et al. The changing landscape of Plasmodium falciparum drug resistance in the Democratic Republic of Congo. *BMC Infectious Disease In Press*.
 16. Willson M, Krogstad D, Arinaitwe E, et al. Urban Malaria: Understanding its Epidemiology, Ecology, and Transmission across Seven Diverse ICEMR Network Sites. *Am J Trop Med Hyg*. 2015;93(3 Suppl):110-123.
 17. Tatem AJ, Gething PW, Smith DL, Hay S. Urbanization and the global malaria recession. *Malar J*. 2013;12(133).
 18. Hay S, Guerra CA, Tatem AJ, Atkinson PM, Snow R. Urbanization, malaria transmission and disease burden in Africa. *Nat Rev Microbiol*. 2005;3(1):81-90.
 19. Alirol E, Getaz L, Stoll B, Chappuis F, Loutan L. Urbanisation and infectious diseases in a globalised world. *Lancet Infect Dis*. 2011;11(2):131-141.
 20. Donnelly M, McCall PJ, Lengeler C, et al. Malaria and urbanization in sub-Saharan Africa. *Malar J*. 2005;4(12). doi:10.1186/1475-2875-4-12
 21. Andrada A, Herrera S, Inyang U, Mohammed AB, Uhomoibhi P, Yé Y. A subnational profiling analysis reveals regional differences as the main predictor of ITN ownership and use in Nigeria. *Malar J*. 2019;18(1):185.
 22. Tokponnon FT, Aholoukpe B, Denon EY, et al. Evaluation of the coverage and effective use rate of long-lasting insecticidal nets after nation-wide scale up of their distribution in Benin. *Parasit Vectors*. 2013;6(1):265.
 23. Ladi-Akinyemi TW, Ladi-Akinyemi BO, Olatona FA, Oluwole FA. Ownership and utilization of long-lasting insecticide nets among caregivers of children under-5 years in Ogun State, Nigeria: A rural–urban comparison. *Neurol Sci*. 2018;15(3):145.
 24. Stebbins R, Emch M, Meshnick SR. The Effectiveness of Community Bed Net Use on Malaria Parasitemia among Children Less Than 5 Years Old in Liberia. *Am J Trop Med Hyg*. 2018;98(3):660-666.
 25. Demographic and Health Surveys. Team and Partners. <https://dhsprogram.com/Who-We-Are/About-Us.cfm>.
 26. Ministère du Plan and Macro International. *Enquête Démographique et de Santé, République Démocratique Du Congo 2007*. Calverton, MD, USA: Ministère du Plan and Macro International.; 2008.
 27. Vassen M, Thiam M, Le T. The Demographic and Health Surveys. In: *Household Sample*

- Surveys in Developing and Transition Countries*. New York, NY: United Nations Publishing; 2005.
28. Doctor S, Liu Y, Whitesell A, et al. Malaria Surveillance in the Democratic Republic of the Congo: Comparison of Microscopy, PCR, and Rapid Diagnostic Test. *Diagn Microbiol Infect Dis*. 2017;85(1):16-18.
 29. Rutstein SO. The DHS Wealth Index: Approaches for Rural and Urban Areas. 2008.
 30. Tusting LS, Bottomley C, Gibson H, et al. Housing Improvements and Malaria Risk in Sub-Saharan Africa: A Multi-Country Analysis of Survey Data. *PLoS Med*. 2017;14(2):e1002234.
 31. Mayala B, Fish TD, Eitelberg D, Dontamsetti T. *The Geospatial Covariate Datasets Manual*. Rockville, Maryland: The DHS Program, ICF; 2018.
 32. Plowe C, Djimdé AA, Bouare M, Doumbo O, Wellems TE. Pyrimethamine and Proguanil resistance-conferring mutations in Plasmodium falciparum Dihydrofolate Reductase : polymerase chain reaction methods for surveillance in Africa. *Am J Trop Med Hyg*. 1995;52(6):565-568.
 33. Beshir KB, Hallett RL, Eziefula AC, et al. Measuring the efficacy of anti-malarial drugs in vivo: quantitative PCR measurement of parasite clearance. *Malar J*. 2010;9(312).
 34. Tangpukdee N, Duangdee C, Wilairatana P, Krudsood S. Malaria Diagnosis: A Brief Review. *Korean Journal of Parasitology*. 2009;47(2):93-102.
 35. Mwandagalirwa MK, Levitz L, Thwai KL, et al. Individual and household characteristics of persons with Plasmodium falciparum malaria in sites with varying endemicities in Kinshasa Province, Democratic Republic of the Congo. *Malar J*. 2017;16(1):456.
 36. Hyde JE. Drug-resistant malaria - an insight. *FEBS J*. 2007;274(18):4688-4898.
 37. Antonia AL, Taylor SM, Janko M, Emch M, Tshetu AK, Meshnick SR. Short report: A cross-sectional survey of Plasmodium falciparum pfcrt mutant haplotypes in the Democratic Republic of Congo. *Am J Trop Med Hyg*. 2014;90(6):1094-1097.
 38. Taylor SM, Antonia AL, Parobek CM, et al. Plasmodium falciparum sulfadoxine resistance is geographically and genetically clustered within the DR Congo. *Sci Rep*. 2013;3:9-11.
 39. Giorgi E, Diggle P. PrevalMap : An R Package for Prevalence Mapping. *J Stat Softw*. 2017;78(7). doi:10.18637/jss.v078.i08
 40. Marivoet W, De Herdt T. Tracing Down Real Socio-Economic Trends From Household Data With Erratic Sampling Frames: The Case of the Democratic Republic of the Congo. *J Asian Afr Stud*. 2017;53(4). doi:10.1177/0021909617698842
 41. Noor AM, Alegana VA, Gething PW, Tatem AJ, Snow RW. Using remotely sensed night-time

- light as a proxy for poverty in Africa. *Popul Health Metr.* 2008;6(1):5.
42. Wesolowski A, Eagle N, Tatem AJ, et al. Quantifying the Impact of Human Mobility on Malaria. *Nature.* 2012;338(6104):267-270.
 43. WorldPop. Africa Continental Population Datasets (2000 - 2020). <https://www.worldpop.org/doi/10.5258/SOTON/WP00013>. Published 2016.
 44. Harris I, Jones PD, Osborn TJ, Lister D. Updated high-resolution grids of monthly climatic observations – the CRU TS3.10 Dataset. *Int J Climatol.* 2014;43:623-642.
 45. Weiss DJ, Nelson A, Gibson HS, et al. A global map of travel time to cities to assess inequalities in accessibility in 2015. *Nature.* 2018;553(7688):333-336.
 46. R Core Team. R: A language and environment for statistical computing. R Foundation for Statistical Computing, Vienna, Austria. <https://www.r-project.org/>. Published 2017.
 47. Lumley T. Analysis of Complex Survey Samples. *Journal of Statistical Software.* 2004;9(1):1-19.
 48. Croft T, Marhsall A, Allen C. *Guide to DHS Statistics*. Rockville, Maryland: ICF; 2018.
 49. The Demographic and Health Survey Program. *Demographic and Health Survey (DRC-DHS II) Supplemental Malaria Report*. The Demographic and Health Survey; 2015.
 50. The World Health Organization. Democratic Republic of the Congo. http://www.who.int/malaria/publications/country-profiles/profile_cod_en.pdf?ua=1. Published 2016. Accessed June 21, 2018.
 51. Essendi WM, Vardo-Zalik AM, Lo E, et al. Epidemiological risk factors for clinical malaria infection in the highlands of Western Kenya. *Malar J.* 2019;18(1):211.
 52. The Center for Disease Control and Prevention. Human Factors and Malaria.
 53. Ippolito MM, Searle KM, Hamapumbu H, et al. House Structure Is Associated with *Plasmodium falciparum* Infection in a Low-Transmission Setting in Southern Zambia. *Am J Trop Med Hyg.* 2017;97(5):1561-1567.
 54. Organization WH. *World Malaria Report*. Geneva, Switzerland: The World Health Organization; 2018.
 55. Yang G-G, Kim D, Pham A, Paul CJ. A Meta-Regression Analysis of the Effectiveness of Mosquito Nets for Malaria Control: The Value of Long-Lasting Insecticide Nets. *Int J Environ Res Public Health.* 2018;15(3). doi:10.3390/ijerph15030546
 56. Lindsay SW, Jawara M, Mwesigwa J, et al. Reduced mosquito survival in metal-roof houses may contribute to a decline in malaria transmission in sub-Saharan Africa. *Sci Rep.*

2019;9(1):7770.

57. Romay-Barja M, Jarrin I, Ncogo P, et al. Rural-Urban Differences in Household Treatment-Seeking Behaviour for Suspected Malaria in Children at Bata District, Equatorial Guinea. *PLoS One*. 2015;10(8):e0135887.
58. Keiser J, Utzinger J, Castro De Castro M, Smith TA, Tanner M, Singer BH. Urbanization in Sub-Saharan Africa and Implication for Malaria Control. In: Berman J, Alilio MS, Mills A, eds. *The Intolerable Burden of Malaria II: What's New, What's Needed*. Bethesda Maryland; 2004.
59. Ministere du Plan et Suivi de la Mise en oeuvre de la Revolution de la Modernite - MPSMRM/Congo, Ministere de la Sante Publique - MSP/Congo, ICF International. *Republique Democratique Du Congo Enquete Demographique et de Sante (EDS-RDC) 2013-2014*. Rockville, Maryland, USA: MPSMRM, MSP, and ICF International; 2014. <http://dhsprogram.com/pubs/pdf/FR300/FR300.pdf>.

Supplementary Text:

Modern Housing variable construction:

We constructed a composite “modern housing” variable using data from the roof, wall, and floor material variables reported in the DHS. The definition of modern housing was based off those used by Tusting et al¹. Modern roofing materials included: metal, zinc/cement, tiles/slate, or cement. Modern wall material included: cement, stone, bricks, or covered adobe. Modern floor materials included: vinyl, asphalt, ceramic tiles, cement, or carpet. Only houses with a modern roof, walls, and floor materials were considered “modern housing”.

PrevMap analysis:

We estimated cluster-level drug resistance allele frequencies using the *PrevMap* package in R². We fit a model in order to generate cluster-level SNP prevalence estimates at all sampled DHS clusters from the 1,065 children with available data. Each resistance mutation was analyzed individually. We first determined raw cluster-level SNP frequencies and then transformed the proportions using a logit transformation. We fit linear a geospatial model of the following form:

$$y_i = S(x_i) + Z_i$$

In this model, y_i is equal to the transformed allele frequency for each cluster and $S(x_i)$ represents an isotropic Gaussian Process with a variance of σ^2 and a Matern correlation function². Z_i represents a Gaussian error term². Model parameters were estimated using maximum likelihood and models were run using 10,000 simulations to generate spatially smooth frequency estimates. After fitting the model, we extracted the frequency estimate for each DHS cluster included in the analysis. To minimize bias, we averaged the estimated values for all geopoints within 15km square of the DHS cluster geopoint.

We used the same model framework to generate spatially smoothed *P. falciparum* prevalence estimates (**Figure 3**). Using this model, we also determined the estimate error for all points (**Supplementary Figure 1**).

Bednet use sensitivity analysis:

We evaluated four different methods for determining bednet usage based on the questions asked in the DHS questionnaire. The first (M1) asked if the individual slept under an “ever treated” net the previous night. The second (M2) asked if the individual slept under a “long lasting insecticide treated net”. For the third method (M3), we constructed a “new net” variable based on whether the individual had obtained the net, or re-treated it with insecticide, within the previous 3 years¹. Lastly (M4), the DHS asks, “the type of mosquito bednet person slept

under”, with options of no net, an untreated net, or a treated net. We compared the estimated prevalence ratio of those who used nets versus those who did not based on each method’s definition of net use. The results (**Figure S2**) demonstrate no substantial differences in the effect of net use between the four methods. The variable used in M1 was used for the primary analysis.

Supplementary Tables/Figures:

Figure S1: Standard error map for smoothed *P. falciparum* PCR prevalence estimates generated using *PrevMap*²

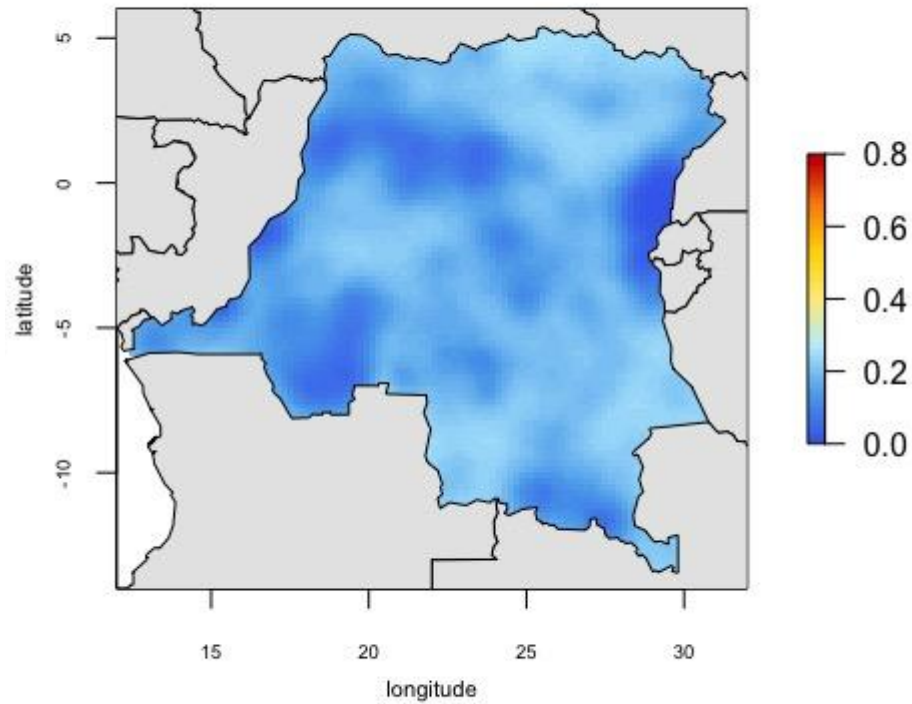


Figure S2: Results of sensitivity analysis evaluating different methods for measuring and coding bednet usage. Each model compared the prevalence of PCR detectable *P. falciparum* amongst individuals who reported using a net versus those who did not.

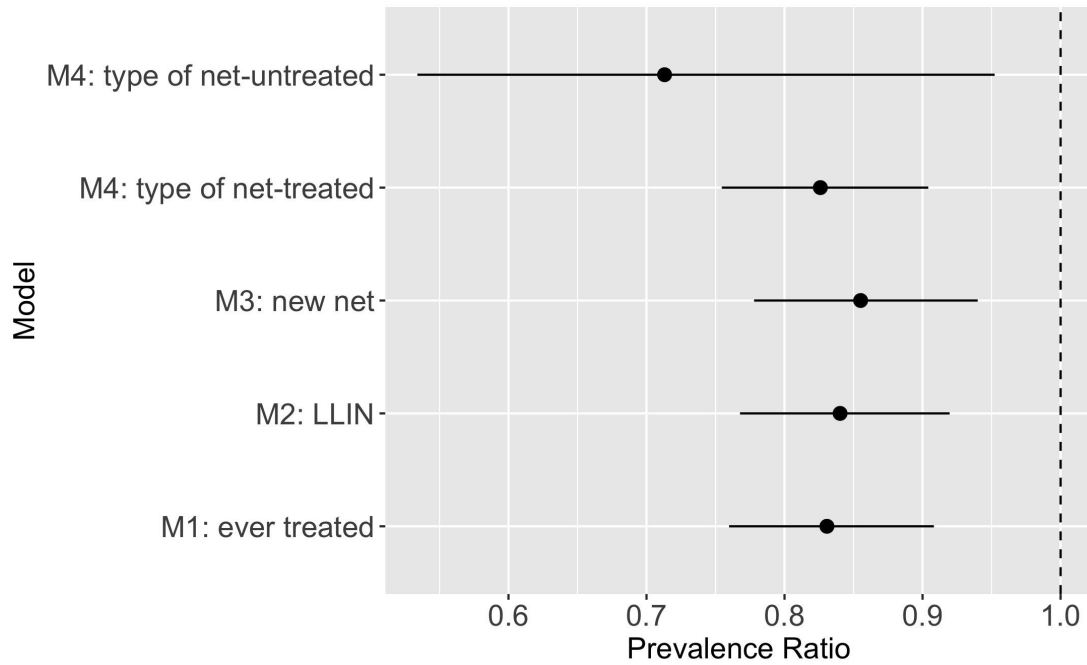


Table S1: Province level *P.falciparum* prevalence estimates measured by PCR.

Province name	Prevalence % (SE)
Kinshasa	18.6 (2.3)
Kwango	21.4 (3.7)
Kwilu	25.8 (5.0)
Mai-Ndombe	43.9 (4.7)
Kongo Central	40.5 (3.8)
Equateur	22.4 (2.7)
Mongala	26.3 (2.9)
Nord-Ubangi	48.9 (5.0)
Sud-Ubangi	31.3 (5.3)
Tshuapa	33.7 (4.4)
Kasai	44.5 (7.3)
Kasai-Central	43.5 (4.0)
Kasai-Oriental	35.9 (4.3)
Lomami	52.5 (3.1)
Sankuru	27.2 (3.3)
Haut-Katanga	22.5 (3.4)
Haut-Lomami	41.0 (5.2)
Lualaba	38.6 (9.6)

Tanganyika	54.3 (5.1)
Maniema	45.5 (5.7)
Nord-Kivu	6.7 (1.6)
Bas-Uele	58.3 (6.4)
Haut-Uele	42.7 (3.6)
Ituri	33.9 (4.1)
Tshopo	29.6 (4.9)
Sud-Kivu	16.4 (3.2)

Table S2: Associations between identified risk factors and *P. falciparum* prevalence, stratified by urbanicity

Variable	Urban Category	Prevalence Ratio	95% Confidence Interval	P-value	F-test
<i>Individual level:</i>					
Bednet use (all brands)	Rural	0.79	0.71 – 0.89	<0.001	0.442
	Urban	0.86	0.73– 1.01	0.066	
Deltamethrin or alphacypermethrin bednet use	Rural	0.75	0.66- 0.85	<0.001	0.077
	Urban	0.94	0.77- 1.14	0.523	
Female Sex	Rural	0.83	0.77 – 0.90	<0.001	0.909
	Urban	0.84	0.75– 0.94	0.002	
Age (scaled)	Rural	0.86	0.83 – 0.90	<0.001	0.537
	Urban	0.84	0.78– 0.90	<0.001	
Modern Housing	Rural	0.98	0.71 – 1.34	0.876	0.035
	Urban	0.60	0.46 – 0.79	<0.001	
Metal Roofing	Rural	0.85	0.69– 1.03	0.099	0.002
	Urban	0.53	0.43- 0.66	<0.001	
Wealth	Rural	0.95	0.90– 1.01	0.106	<0.001
	Urban	0.72	0.65– 0.80	<0.001	
Education	Rural	1.03	0.96 – 1.11	0.435	<0.001
	Urban	0.80	0.71– 0.89	<0.001	
Net Ratio >0.5	Rural	0.82	0.72 - 0.93	0.002	0.521
	Urban	0.90	0.72- 1.12	0.351	

Cluster level:

Deltamethrin or alphacypermethrin net use*	Rural	0.93	0.89 – 0.97	0.002	0.040
	Urban	1.07	0.94– 1.21	0.299	
SP [†] use	Rural	0.96	0.94- 0.97	<0.001	0.458
	Urban	1.00	0.87 - 1.15	0.953	
A437G*	Rural	0.90	0.85 – 0.95	<0.001	0.599
	Urban	0.92	0.85 – 0.99	0.032	
K540E*	Rural	0.96	0.92 – 0.99	0.009	0.180
	Urban	0.92	0.87 – 0.97	0.002	
A581G*	Rural	0.85	0.78 – 0.92	0.001	0.507
	Urban	0.80	0.67– 0.94	0.008	
CRT K76T*	Rural	0.95	0.92 - 0.98	<0.001	0.649
	Urban	0.93	0.87 - 0.99	0.029	

[†] Sulfadoxine/pyrimethamine

*logit transformed

Table S3: Comparison of the association between individual LLIN[†] use vs no LLIN[†] use and malaria prevalence between adults and children in the 2013-2014 Demographic and Health Survey. Data from children has been previously published^{3,4}.

Population	Prevalence Ratio	95% Confidence Interval
Children	0.82	0.72 – 0.91
Adults	0.83	0.76 – 0.91

[†]Long-lasting insecticide treated net

REFERENCES

1. Tusting LS, Bottomley C, Gibson H, et al. Housing Improvements and Malaria Risk in Sub-Saharan Africa: A Multi-Country Analysis of Survey Data. *PLoS Med*. 2017;14(2):e1002234.
2. Giorgi E, Diggle P. PrevalMap : An R Package for Prevalence Mapping. *J Stat Softw*. 2017;78(7). doi:10.18637/jss.v078.i08
3. Doctor S, Liu Y, Whitesell A, et al. Malaria Surveillance in the Democratic Republic of the Congo: Comparison of Microscopy, PCR, and Rapid Diagnostic Test. *Diagn Microbiol Infect Dis*. 2017;85(1):16-18.
4. Levitz L, Janko M, Mwandagalirwa K, et al. Effect of individual and community-level bed net usage on malaria prevalence among under-fives in the Democratic Republic of Congo. *Malar J*. 2018;17(1).