

1 **Title:**

2 **Interactive web application for plotting personalized prognosis prediction**  
3 **curves in allogeneic hematopoietic cell transplantation using machine learning**

4

5 **Names of authors:**

6 Hiroshi Okamura,<sup>1</sup> Mika Nakamae,<sup>1</sup> Shiro Koh,<sup>1</sup> Satoru Nanno,<sup>1</sup> Yasuhiro

7 Nakashima,<sup>1</sup> Hideo Koh,<sup>1</sup> Takahiko Nakane,<sup>1</sup> Asao Hirose,<sup>1</sup> Masayuki Hino,<sup>1</sup> and

8 Hirohisa Nakamae.<sup>1</sup>

9

10 **Authors' affiliations:**

11 <sup>1</sup> Hematology, Graduate School of Medicine, Osaka City University, Osaka, Japan

12

13 **Contact information for correspondence:** Hiroshi Okamura, M.D., Ph.D.

14 Hematology, Graduate School of Medicine, Osaka City University, 1-4-3 Asahi-machi,

15 Abeno-ku, Osaka 545-8585, Japan

16 **Phone:** +81-6-6645-3881

17 **Fax:** +81-6-6645-3880

18 **E-mail:** h\_okamura@med.osaka-cu.ac.jp

19

1 **Abstract**

2           Allogeneic hematopoietic cell transplantation (allo-HCT) is a curative  
3 treatment option for malignant hematological disorders. Transplant clinicians estimate  
4 patient-specific prognosis empirically in clinical practice based on previous studies on  
5 similar patients. However, this approach does not provide objective data. The present  
6 study primarily aimed to develop a tool capable of providing accurate personalized  
7 prognosis prediction after allo-HCT in an objective manner. We succeeded in  
8 generating personalized prognosis prediction curves of 1-year overall survival (OS),  
9 progression-free survival (PFS), relapse/progression, and non-relapse mortality  
10 (NRM) adjusted for new allo-HCT candidates by eight pre-transplant factors using our  
11 interactive web application  
12 ([https://predicted-os-after-transplantation.shinyapps.io/RSF\\_model/](https://predicted-os-after-transplantation.shinyapps.io/RSF_model/)). A random  
13 survival forest model using the data of patients who underwent allo-HCT at our  
14 institution was applied to develop this application. To assess its predictive  
15 performance, the entire cohort (363 cases) was split into a training cohort (70%) to  
16 develop the predictive model and test cohort (30%) to confirm its performance  
17 time-sequentially. The areas under the receiver-operating characteristic curves for  
18 1-year OS, PFS, relapse/progression, and NRM in test cohort were 0.70, 0.72, 0.73,  
19 and 0.77, respectively. In conclusion, the new web application could allow transplant

It is made available under a [CC-BY-NC 4.0 International license](#) .

Okamura H et.al. Personalized prognosis curves after transplantation. Page 3

- 1 clinicians to inform a new allo-HCT candidate of the objective personalized prognosis
- 2 prediction and facilitate decision-making.
- 3

## 1 INTRODUCTION

2 Allogeneic hematopoietic cell transplantation (allo-HCT) is an advanced  
3 therapeutic intervention required for high-risk malignant hematological disorders [1].  
4 Various complex and intertwined pre-transplant factors affect patient prognosis after  
5 allo-HCT [2-5]. Transplant clinicians need to estimate individual prognosis after  
6 allo-HCT in clinical practice by combining not only certain indices that can stratify the  
7 prognosis after allo-HCT, such as refined Disease Risk Index (DRI-R), EBMT risk  
8 score, and Hematopoietic Cell Transplantation Comorbidity Index (HCT-CI) [6-8], but  
9 also individual factors (e.g., age, performance status [PS], disease status, or the  
10 number of transplantations) and transplant procedures (e.g., donor source or  
11 conditioning regimen). However, the predictive capacities of these prognostic indices  
12 remain suboptimal [2]. Furthermore, prognosis prediction based on the empirical  
13 integration of multiple patient-specific factors by the clinician is not always objective  
14 due to the complexity of allo-HCT treatment.

15 A random survival forest (RSF) is an ensemble machine learning method for  
16 right-censored time-to-event data analysis. Recently, RSF has become increasingly  
17 popular for survival data analysis in various medical fields because of its  
18 high-precision predictions [9-11]. It is possible to develop a prognosis prediction  
19 model integrating multiple factors to compute patient-specific prognosis prediction

1 curves such as survival or cumulative incidence adjusted for individual factors of a  
2 new patient using RSF [12]. Although the most popular model for survival analysis is  
3 the Cox proportional hazard (Cox PH) regression, RSF has some advantages over  
4 the Cox PH model. First, RSF can easily deal with non-linear effects, correlated  
5 parameters, and variable interaction. Second, while the Cox PH model may be limited  
6 due to the proportional hazards assumption, RSF is non-parametric and completely  
7 independent of model assumptions [11, 13]. Therefore, survival prediction analysis by  
8 RSF may provide novel insights into the allo-HCT field.

9 Although objective and accurate patient-specific prognosis prediction using a  
10 machine learning model can be quite informative for clinicians and patients in clinical  
11 decision-making, it has not been applied in a clinical setting. A user-friendly tool for  
12 constructing accurate personalized prognosis prediction curves after allo-HCT is  
13 lacking. Such a tool could allow transplant clinicians to inform patients of  
14 patient-specific prognosis prediction objectively derived from past patient data, and  
15 build an optimal personalized treatment strategy.

16 Here, we developed a web application tool with a graphical user interface (GUI)  
17 capable of plotting the personalized survival and cumulative incidence prediction  
18 curves after allo-HCT adjusted by eight patient-specific factors, which are known as  
19 prognostic predictors, using RSF and assessed their predictive performances.

1

## 2 **PATIENTS AND METHODS**

### 3 *Patients and Definition*

4           This study, comprising retrospective prognostic modeling, analyzed a group  
5 of consecutive patients who underwent allo-HCT at our institution between January  
6 2008 and November 2017. All pre-transplant factors were recorded in the medical  
7 chart within 28 days prior to conditioning. The conditioning regimen containing either  
8 total body irradiation in fractionated doses greater than 8 Gy, an oral busulfan dose of  
9 9 mg/kg or more, an intravenous busulfan dose of 7.2 mg/kg or more, or a melphalan  
10 dose of 140 mg/m<sup>2</sup> or more was defined as myeloablative in line with a previous  
11 report [14]. Human leukocyte antigen (HLA) compatibility was defined by DNA typing  
12 for HLA-A, HLA-B, HLA-C, and HLA-DR. This study was approved by the Osaka City  
13 University Hospital Certified Review Board.

14

### 15 *Supportive Care*

16           Prophylactic antibiotics, either levofloxacin or polymyxin B oral tablets, an  
17 antifungal agent, and acyclovir were routinely administered from the start of  
18 conditioning. Trimethoprim-sulfamethoxazole was also administered from the start of  
19 conditioning to 2 days prior to allo-HCT and after neutrophil engraftment to prevent

1 *Pneumocystis jirovecii*-induced pneumonia. Granulocyte colony-stimulating factor  
2 treatment was generally initiated from the day following HCT to neutrophil  
3 engraftment. Ursodeoxycholic acid was administered from the start of conditioning to  
4 prevent sinusoidal obstruction syndrome [15].

5

### 6 *Predictors and Outcomes*

7       Eight pre-transplant factors known as prognostic predictors for allo-HCT,  
8 including recipients' age, DRI-R, HCT-CI, PS, donor source (related bone marrow  
9 [rBM], related peripheral blood [rPB], unrelated bone marrow [uBM], cord blood [CB],  
10 or haploidentical peripheral blood [haplo-PB]), HLA compatibility, conditioning  
11 intensity (myeloablative conditioning [MAC] or reduced intensity conditioning [RIC]),  
12 and the number of allo-HCT were used as predictive variables [2-5].

13       The predictive objectives were prediction of 1-year overall survival (OS),  
14 1-year progression-free survival (PFS), and 1-year cumulative incidences of  
15 relapse/progression and non-relapse mortality (NRM). An OS event was defined as  
16 death from any cause. PFS was defined as survival without relapse/progression.  
17 NRM was defined as death without relapse/progression. We considered cases that  
18 never achieved complete remission after allo-HCT as relapse/progression on day 1  
19 after allo-HCT. Relapse/progression and NRM were treated as competing events with

1 one another. The probabilities of OS and PFS were calculated using the  
2 Kaplan–Meier method. Cumulative incidences of relapse/progression and NRM were  
3 calculated using Gray's method.

4

#### 5 *Statistical Analysis*

6 The following is a summary of the analysis outline: (i) preprocessing data  
7 quality assurance, (ii) development of a web application tool, and (iii) assessment of  
8 the predictive performance for OS, PFS, relapse/progression, and NRM in  
9 accordance with the Type 2b (nonrandom split-sample development and validation)  
10 of prediction model studies covered by the Transparent Reporting of a prediction  
11 model for Individual Prognosis Or Diagnosis (TRIPOD) statement [16]. We had no  
12 missing data. The number of trees to develop the RSF model was set as 500. A  
13 log-rank splitting rule was used to grow survival trees of a forest.

14 We used R package randomForestSRC [17] for analysis of the RSF model, R  
15 package timeROC [18] for calculating AUCs, and R package shiny/R for development  
16 of the web application. All analyses were performed using R version 3.5.1. We adhere  
17 to the TRIPOD statement [16].

18

#### 19 *Performance Assessment of Predictive Model*



1 All predictive performances were calculated using the time-dependent area  
2 under the receiver-operating characteristic curve (AUC) [18]. First, the entire cohort  
3 was split into a training cohort (70%) and test cohort (30%) time-sequentially. Second,  
4 the optimal number of variables randomly selected as candidates for splitting a node,  
5 which is a hyperparameter in the RSF model, for each outcome was tuned using  
6 5-fold cross-validation method in the training cohort [19]. It was defined as the one  
7 with the highest AUC value. Third, we assessed the predictive performances of the  
8 RSF, Cox PH model, DRI-R, and HCT-CI for 1-year OS and PFS, and of RSF, DRI-R,  
9 and HCT-CI for 1-year relapse/progression and NRM in test cohort. We plotted  
10 time-sequential AUCs per month from 3 to 12 months after allo-HCT in the test cohort  
11 to assess the continuous predictive performances in each prognosis prediction curve.  
12 The schema of the assessment method for these predictive models is shown in  
13 Supplementary Fig. 1.

14

#### 15 *Development of a Web Application Tool*

16 We developed a web application tool capable of plotting the personalized  
17 prognosis prediction curves of 1-year overall survival (OS), 1-year progression-free  
18 survival (PFS), and 1-year cumulative incidences of relapse/progression and  
19 non-relapse mortality (NRM) adjusted by eight patient-specific factors of a new

1 allo-HCT candidate, using RSF predictive model trained by the entire cohort.

2

### 3 **RESULTS**

#### 4 *Patients and Transplantations*

5           Three hundred and eighty-four patients underwent allo-HCT. One patient who  
6 underwent transplant from unrelated peripheral blood stem cells was excluded due to  
7 insufficient sample for analysis. Since DRI-R cannot be scored when there is benign  
8 or rare disease, 21 patients were also excluded (aplastic anemia, 11; Idiopathic  
9 cytopenia of undetermined significance, 1; chronic active Epstein–Barr virus disease,  
10 4; plasma cell leukemia, 1; chronic myelomonocytic leukemia, 2;  
11 myelodysplastic/myeloproliferative neoplasms, unclassifiable, 1). In total, 363  
12 patients were analyzed in this study. The clinical characteristics of the entire cohort  
13 are listed in Table 1. The median follow-up period for the survivor in the entire cohort  
14 was 51.9 months (range; 2.4-127.9 months). The 1-year OS and PFS after allo-HCT  
15 of the entire cohort were 62.7% (95% confidence interval [CI]; 57.5-67.5) and 49.6%  
16 (95% CI; 44.3-54.6). The 1-year cumulative incidences of relapse/progression and  
17 NRM in the entire cohort were 40.5% (95% CI; 35.4-45.5) and 9.9% (95% CI;  
18 7.1-13.3), respectively. The clinical characteristics and outcomes in the training  
19 cohort (254/363) and test cohort (109/363) are listed in Supplementary Table 1.



1           The predictive performances for each 1-year prognosis model in the RSF  
2 trained by the entire cohort is shown in Supplementary Table 2. They were calculated  
3 using the 5-fold cross-validation method to prevent overfitting.

4

#### 5 *Assessment of Predictive Performance*

6           The AUCs calculated by the 5-fold cross-validation in the training cohort for  
7 1-year OS, PFS, relapse/progression, and NRM per hyperparameter in the RSF  
8 model are shown in Table 2. The optimal number of variable candidates for splitting a  
9 node in the RSF model for 1-year OS, PFS, relapse/progression, and NRM were 7, 2,  
10 2, and 5, respectively.

11           The AUCs for 1-year OS, PFS, relapse/progression, and NRM in the test  
12 cohort are shown in Table 3. Time-sequential AUCs plotted per month from 3 to 12  
13 months after allo-HCT for OS, PFS, relapse/progression, and NRM in the test cohort  
14 are shown in Fig. 2. The predictive performances of RSF for OS and PFS were  
15 comparable to those of the Cox PH model at any time-point. The predictive  
16 performances of RSF for every outcome were superior to those of DRI-R or HCT-CI  
17 alone consistently at any given time-point.

18

## 19 **DISCUSSION**

1           We succeeded in developing an interactive web application tool with GUI  
2 capable of accurately, objectively, and rapidly generating the four types of  
3 personalized 1-year prognosis prediction curves after allo-HCT in just a few steps  
4 using machine learning. To the best of our knowledge, there have been no previous  
5 reports regarding the development of a similar interactive tool that can provide  
6 various types of patient-specific prognosis prediction curves in allo-HCT.

7           Some predictive indices of prognosis after allo-HCT such as DRI-R, HCT-CI,  
8 EBMT risk score, and pre-transplantation assessment of mortality score have been  
9 reported [2, 6-8, 20]. Although these indices can stratify prognosis after allo-HCT,  
10 transplant clinicians need to empirically consider various additional factors, such as  
11 age, PS, donor source, or conditioning regimen, to estimate patient-specific  
12 prognosis in clinical practice. Our web application tool can calculate and plot  
13 personalized prognosis prediction curves more objectively than a clinician's empirical  
14 estimate and more accurately than any single prognosis index.

15           Shouval et al. developed a website to predict prognosis after allo-HCT using  
16 the alternating decision tree (ADTree), which is a machine learning model [21]. Users  
17 can obtain personalized prognostic predictive information such as day 100 mortality  
18 by providing certain individual pre-transplant factors for a new transplant candidate.  
19 However, the ADTree model cannot treat time-to-event data, whereas the RSF is a

1 machine learning algorithm for survival analysis that can take the right-censored data  
2 or competing risks into consideration [12, 22]. Hence, our web application can not  
3 only provide prognosis prediction value for a fixed time point but also plot continuous  
4 survival and cumulative incidence prediction curves until 1 year after allo-HCT (Fig. 1).  
5 Moreover, users can simulate various transplant settings for a particular patient  
6 intuitively with just a few clicks using mobile devices such as tablets and smartphones  
7 as well as computers because our web application was developed using shiny/R  
8 library to ensure interactivity. Consequently, our web application can help transplant  
9 clinicians inform a new allo-HCT candidate of their personalized prognosis estimate in  
10 clinical practice, and it can provide both the clinician and candidate with valuable  
11 information to help make clinical decisions.

12           Shouval et al. also reported on the prognosis prediction performance after  
13 allo-HCT by ADTree using registry data in European Group for Blood and Marrow  
14 Transplantation (EBMT) and Italian Group for Bone Marrow Transplantation (GITMO)  
15 and showed that the time-dependent AUCs for 2-year OS were 0.66 and 0.65,  
16 respectively [21, 23]. Their prediction model developed using large amounts of patient  
17 data is quite relevant, because it can be used widely as a generalized prediction  
18 model in allo-HCT fields. However, various biases related to transplant institutes or  
19 countries are inherent in allo-HCT. For example, there are differences in the

1 indications for allo-HCT, transplant experiences, patient characteristics, and strategy  
2 for donor source selection, conditioning regimen, or transplant-related complications  
3 among the transplant institutes or countries. Therefore, some reports have shown  
4 that there is a significant difference in prognosis after allo-HCT among transplant  
5 centers or countries [24, 25]. The prediction model developed using data from a  
6 single institution is protected from bias based on the differences among the transplant  
7 institutes as long as it is used within that institute, because the patient characteristics  
8 or transplant procedures similar to those of the training cohort by which the prediction  
9 model was developed are likely to be inherited by future patients at that institute.  
10 Furthermore, the noise of data collected from a single institute may be less than that  
11 of multicenter data, because the methods of clinical assessment or data collection  
12 could be consistent in a single institute. Hence, an in-house developed prognosis  
13 prediction model may have more advantages for prognosis predictive performance  
14 after allo-HCT in a particular institute than the prediction model based on data  
15 sourced from multiple institutions. Supporting this idea, Fuse et al. also showed that  
16 the predictive performance of relapse in a single institute where the predictive model  
17 was developed using ADTree was better than that in another institute using the  
18 identical predictive model (AUC; 0.75 vs 0.67) [26]. We have published the source  
19 code of our web application on the Internet. Each transplant center can also develop

1 a web application using an in-house prognosis prediction model with its past patient  
2 data.

3 To assess the predictive performance, we developed predictive models with  
4 the training cohort, which is the former group generated by splitting the entire cohort  
5 into two groups time-sequentially, and their predictive performances were assessed  
6 in the test cohort, the latter group. This assessment method accords with the Type 2b  
7 of prediction model studies covered by the TRIPOD statement [16]. As a result, the  
8 predictive performances for 1-year OS, EFS, relapse/progression in the test cohort  
9 were worse than those in the training cohort (Table 2, 3). These results could be  
10 attributed to the difference in the year of allo-HCT between the training and test  
11 cohorts. The predictive performances of the RSF model trained by the entire cohort,  
12 which was used in the web application, is shown in supplementary table 2. However,  
13 the predictive performances for the new allo-HCT candidates in this web application  
14 may not be as high as those shown in supplementary table 2 because the allo-HCT  
15 procedures and patient characteristics may have changed over time.

16 This study has several limitations. First, the predictive performance of our web  
17 application for new allo-HCT candidates in other institutes is unknown since our  
18 model has not obtained external validation. However, as mentioned above, we  
19 suppose it would be suitable for a transplant center, which contains many allo-HCT



1 data, to develop an in-house model for more accurate prognosis prediction. Therefore,  
2 we provide the source codes, which will help each transplant institute to develop an  
3 in-house web application for personalized prognosis prediction after allo-HCT and  
4 assess its predictive performance. Second, as a retrospective analysis, this web  
5 application may be susceptible to selection bias, which may limit the interpretation of  
6 the prediction results. The predictive accuracy is unreliable in cases where  
7 user-provided transplant settings were not included in the training cohort for model  
8 development. Third, a different combination of pre-transplant factors might be  
9 considered to develop a better predictive model. We restricted the number of  
10 pre-transplant predictors to eight to ensure the usability of this web application tool.  
11 These refined eight pre-transplant parameters could be easily and non-invasively  
12 obtained at a low cost. However, there may be other combinations, including  
13 molecular minimal residual disease, that are better for prognosis prediction.  
14 Therefore, further studies are required.

15 In conclusion, we developed an interactive web application tool capable of plotting  
16 four kinds of personalized prognosis prediction curves after allo-HCT objectively  
17 through the integration of eight pre-transplant factors using RSF, and confirmed their  
18 promising predictive performances. The predictive information obtained by this web  
19 application could allow transplant clinicians to inform a new allo-HCT candidate of

1 their objective personalized prognosis prediction in clinical practice and could support  
2 the clinician's and the candidate's decision-making.

3

#### 4 **Acknowledgments**

5 We wish to thank the Hematopoietic Cell Transplant Coordinator of Osaka City  
6 University Hospital, Ms. Umemoto, and Ms. Tanaka for assistance with data entry.

7 This work was supported by the Japan Society for the Promotion of Science (JSPS)  
8 KAKENHI Grant (number 17K09017).

9

#### 10 **Conflict of interest:**

11 All authors have no conflicts of interest to disclose.

## 1 **References**

- 2 1. Copelan EA. Hematopoietic stem-cell transplantation. *N Engl J Med* 2006; **354**:  
3 1813-1826.
- 4 2. Carreras E., Rambaldi A. Evaluation and counseling of candidates. In: Carreras E,  
5 Dufour C, Mohty M, Kröger N (eds). *The EBMT Handbook, Hematopoietic Stem*  
6 *Cell Transplantation and Cellular Therapies*. Springer Nature Switzerland AG:  
7 Cham, Switzerland, 2019, pp 1443–1454
- 8 3. Scott BL, Pasquini MC, Logan BR, Wu J, Devine SM, Porter DL et al.  
9 Myeloablative versus reduced-intensity hematopoietic cell transplantation for  
10 acute myeloid leukemia and myelodysplastic syndromes. *J Clin Oncol* 2017; **35**:  
11 1154-1161.
- 12 4. Milano F, Gooley T, Wood B, Woolfrey A, Flowers ME, Doney K et al. Cord-blood  
13 transplantation in patients with minimal residual disease. *N Engl J Med* 2016;  
14 **375**: 944-953.
- 15 5. Fleischhauer K, Hsu KC, Shaw BE. Prevention of relapse after allogeneic  
16 hematopoietic cell transplantation by donor and cell source selection. *Bone*  
17 *Marrow Transplant* 2018; **53**: 1498-1507.
- 18 6. Armand P, Kim HT, Logan BR, Wang Z, Alyea EP, Kalaycio ME et al. Validation  
19 and refinement of the Disease Risk Index for allogeneic stem cell transplantation.

- 1 Blood 2014; **123**: 3664-3671.
- 2 7. Sorror ML, Maris MB, Storb R, Baron F, Sandmaier BM, Maloney DG et al.  
3 Hematopoietic cell transplantation (HCT)-specific comorbidity index: a new tool  
4 for risk assessment before allogeneic HCT. Blood 2005; **106**: 2912-2919.
- 5 8. Gratwohl A. The EBMT risk score. Bone Marrow Transplant 2012; **47**: 749-756.
- 6 9. Shouval R, Ruggeri A, Labopin M, Mohty M, Sanz G, Michel G et al. An  
7 integrative scoring system for survival prediction following umbilical cord blood  
8 transplantation in acute leukemia. Clin Cancer Res 2017; **23**, 6478-6486.
- 9 10. Zdilar L, Vock DM, Marai GE, Fuller CD, Mohamed ASR, Elhalawani H et al.  
10 Evaluating the effect of right-censored end point transformation for radiomic  
11 feature selection of data from patients with oropharyngeal cancer. JCO Clin  
12 Cancer Inform 2018; **2**, 1-19.
- 13 11. Ingrisich M, Schoppe F, Paprottka K, Fabritius M, Strobl FF, De Toni EN et al.  
14 Prediction of (90)Y radioembolization outcome from pretherapeutic factors with  
15 random survival forests. J Nucl Med 2018; **59**: 769-773.
- 16 12. Mogensen UB, Ishwaran H, Gerds TA. Evaluating random forests for survival  
17 analysis using prediction error curves. J Stat Softw 2012; **50**: 1-23.
- 18 13. Wang H, Li G. A selective review on random survival forests for high dimensional  
19 data. Quant Biosci 2017; **36**: 85-96.

- 1 14. Giralt S, Ballen K, Rizzo D, Bacigalupo A, Horowitz M, Pasquini M et al.  
2 Reduced-intensity conditioning regimen workshop: defining the dose spectrum.  
3 Report of a workshop convened by the center for international blood and marrow  
4 transplant research. *Biol Blood Marrow Transplant* 2009; **15**: 367-369.
- 5 15. Nakamae M, Yamashita M, Koh H, Nishimoto M, Hayashi Y, Nakane T et al. Lung  
6 function score including a parameter of small airway disease as a highly  
7 predictive indicator of survival after allogeneic hematopoietic cell transplantation.  
8 *Transpl Int* 2016; **29**: 707-714.
- 9 16. Moons KG, Altman DG, Reitsma JB, Ioannidis JP, Macaskill P, Steyerberg EW et  
10 al. Transparent Reporting of a multivariable prediction model for Individual  
11 Prognosis or Diagnosis (TRIPOD): explanation and elaboration. *Ann Intern Med*  
12 2015; **162**: W1-73.
- 13 17. Ishwaran H, Gerds TA, Kogalur UB, Moore RD, Gange SJ, Lau BM. Random  
14 survival forests for competing risks. *Biostatistics* 2014; **15**: 757-773.
- 15 18. Blanche P, Dartigues JF, Jacqmin-Gadda H. Estimating and comparing  
16 time-dependent areas under receiver operating characteristic curves for censored  
17 event times with competing risks. *Stat Med* 2013; **32**: 5381-5397.
- 18 19. Hastie T, Tibshirani R, Friedman J. 7.10 Cross-Validation. In: Hastie T, Tibshirani  
19 R, Friedman J (eds). *The Elements of Statistical Learning, Data Mining, Inference,*

- 1 and Prediction, 2nd edn. Springer: New York, USA, 2009, pp 241-248
- 2 20. Parimon T, Au DH, Martin PJ, Chien JW. A risk score for mortality after allogeneic  
3 hematopoietic cell transplantation. *Ann Intern Med* 2006; **144**: 407-414.
- 4 21. Shouval R, Labopin M, Bondi O, Mishan-Shamay H, Shimoni A, Ciceri F et al.  
5 Prediction of allogeneic hematopoietic stem-cell transplantation mortality 100  
6 days after transplantation using a machine learning algorithm: a European Group  
7 for Blood and Marrow Transplantation Acute Leukemia Working Party  
8 Retrospective Data Mining Study. *J Clin Oncol* 2015; **33**: 3144-3151.
- 9 22. Arai Y, Kondo T, Fuse K, Shibasaki Y, Masuko M, Sugita J et al. Using a machine  
10 learning algorithm to predict acute graft-versus-host disease following allogeneic  
11 transplantation. *Blood Adv.* 2019; **3**: 3626-3634.
- 12 23. Shouval R, Bonifazi F, Fein J, Boschini C, Oldani E, Labopin M et al. Validation of  
13 the acute leukemia-EBMT score for prediction of mortality following allogeneic  
14 stem cell transplantation in a multi-center GITMO cohort. *Am J Hematol* 2017; **92**:  
15 429-434.
- 16 24. Marmor S, Begun JW, Abraham J, Virnig BA. The impact of center accreditation  
17 on hematopoietic cell transplantation (HCT). *Bone Marrow Transplant* 2015; **50**:  
18 87-94.
- 19 25. Gratwohl A, Sureda A, Baldomero H, Gratwohl M, Dreger P, Kröger N et al.

- 1 Economics and outcome after hematopoietic stem cell transplantation: A
- 2 retrospective cohort study. EBioMedicine 2015; **2**: 2101-2109.
- 3 26. Fuse K, Uemura S, Tamura S, Suwabe T, Katagiri T, Tanaka T et al.
- 4 Patient-based prediction algorithm of relapse after allo-HSCT for acute leukemia
- 5 and its usefulness in the decision-making process using a machine learning
- 6 approach. Cancer Med 2019; **8**: 5058-5067.

## Figure Legends

### **Fig. 1 Interactive web application for plotting the personalized prognosis prediction curves after allo-HCT**

The view and contents of the web application and an example of the personalized 1-year OS prediction curve which was displayed interactively for a patient (age, 50; DRI-R, high; PS, 1; HCT-CI, 1; conditioning intensity, MAC; HLA compatibility, matched; donor source, rPB; the number of allo-HCT, 1.) are shown.

allo-HCT, allogeneic hematopoietic cell transplantation; DRI-R, refined Disease Risk Index; HCT-CI, Hematopoietic Cell Transplantation Comorbidity Index; HLA, human leukocyte antigen; MAC, myeloablative conditioning; NRM, non-relapse mortality; OS, overall survival; PFS, progression-free survival; PS, performance status; RIC, reduced intensity conditioning; rPB, related peripheral blood.

### **Fig.2 Time-sequential predictive performances**

Time-sequential AUCs of RSF, Cox PH model, DRI-R, and HCT-CI for OS (a) and PFS (b) and those of RSF, DRI-R, and HCT-CI for relapse/progression (c) and NRM (d) are plotted per month from 3 to 12 months after allo-HCT.

allo-HCT, allogeneic hematopoietic cell transplantation; AUCs; area under the



receiver-operating characteristic curves; Cox PH, Cox proportional hazard; DRI-R, refined Disease Risk Index; HCT-CI, Hematopoietic Cell Transplantation Comorbidity Index; NRM, non-relapse mortality; OS, overall survival; PFS, progression-free survival; RSF, random survival forest.

**Table 1. Patient Characteristics**

Characteristic	All patients (n = 363)
Median age [range]	46 [17-69]
Diagnosis (%)	
AML	170 (47)
ALL	63 (17)
MDS	46 (13)
CML	13 (4)
ML	43 (12)
Others	28 (8)
DRI-R (%)	
low	19 (5)
int	176 (49)
high	130 (36)
very high	38 (11)
HCT-CI (%)	
0	147 (41)
1	67 (19)
2	62 (17)
over 3	87 (24)
Conditioning (%)	
MAC	219 (60)
RIC	144 (40)
HLA disparity (%)	
matched	139 (38)
mismatched	224 (62)
Source of stem cell (%)	
rBM	8 (2)
rPB	54 (15)
uBM	107 (30)
CB	80 (22)
Haplo PB	114 (31)
PS (%)	
0	185 (51)
1	159 (44)
over 2	19 (5)

Number of allo-HCT (%)	
1	289 (80)
2	62 (17)
3	12 (3)
Year of allo-HCT (%)	
2008-2014	251 (69)
2015-2017	112 (31)
Prognosis [95% CI]	
1-year OS (%)	62.7 [57.5-67.5]
1-year PFS (%)	49.6 [44.3-54.6]
1-year relapse/progression (%)	40.5 [35.4-45.5]
1-year NRM (%)	9.9 [7.1-13.3]
Median follow-up months for the survivor [range]	51.9 [2.4-127.9]

---

Abbreviations: AML, acute myeloid leukemia; ALL, acute lymphoblastic leukemia; allo-HCT, allogeneic hematopoietic cell transplantation; BM, bone marrow; CI, confidence interval; CML, chronic myeloid leukemia; DRI-R, refined Disease Risk Index; Haplo, HLA-haploidentical; HCT-CI, Hematopoietic Cell Transplantation Comorbidity Index; HLA, human leukocyte antigen; MAC, myeloablative conditioning; MDS, myelodysplastic syndrome; ML, malignant lymphoma; NRM, non-relapse mortality; OS, overall survival; PB, peripheral blood; PFS, progression free survival; PS, performance status; RIC, reduced intensity conditioning.

**Table 2. Predictive performance in the training cohort per hyperparameter in the RSF model**

The number of variable candidates (hyperparameter)	AUC			
	1-year OS	1-year PFS	1-year relapse/progression	1-year NRM
1	0.7710	0.7482	0.7394	0.6124
2	0.7774	<b>0.7606</b>	<b>0.7542</b>	0.6502
3	0.7806	0.7600	0.7504	0.6684
4	0.7828	0.7582	0.7452	0.6712
5	0.7866	0.7548	0.7422	<b>0.6838</b>
6	0.7856	0.7548	0.739	0.6776
7	<b>0.7878</b>	0.7544	0.7348	0.6740
8	0.7864	0.7540	0.7330	0.6794

Abbreviations: AUC, area under the receiver-operating characteristic curve; NRM, non-relapse mortality; OS, overall survival; PFS, progression free survival; RSF, random survival forest.

**Table 3. Predictive performance in the test cohort**

Predictive model	AUC			
	1-year OS [95% CI]	1-year PFS [95% CI]	1-year relapse/progression [95% CI]	1-year NRM [95% CI]
RSF	0.70 [0.60-0.80]	0.72 [0.62-0.82]	0.73 [0.63-0.84]	0.77 [0.64-0.90]
Cox PH	0.71 [0.60-0.81]	0.70 [0.59-0.80]	-	-
DRI-R	0.65 [0.55-0.75]	0.67 [0.57-0.77]	0.72 [0.62-0.81]	0.39 [0.24-0.53]
HCT-CI	0.55 [0.44-0.66]	0.54 [0.44-0.65]	0.51 [0.42-0.64]	0.59 [0.43-0.75]

Abbreviations: AUC, area under the receiver-operating characteristic curve; Cox PH, Cox proportional hazard; DRI-R, refined disease risk index; HCT-CI, hematopoietic cell transplantation comorbidity index; NRM, non-relapse mortality; OS, overall survival; PFS, progression free survival; RSF, random survival forest.

**Fig. 1**

Users choose an outcome they intend to predict either OS, PFS, relapse/progression, or NRM

(a)

(c) Prediction medRxiv preprint doi: <https://doi.org/10.1101/2019.12.14.19014654>; this version posted December 18, 2019. The copyright holder for this preprint (which was not certified by peer review) is the author/funder, who has granted medRxiv a license to display the preprint in perpetuity. It is made available under a [CC-BY-NC 4.0 International license](https://creativecommons.org/licenses/by-nc/4.0/).

(b)

Age:  (16 to 70)

Conditioning Intensity:

Refined DRI:

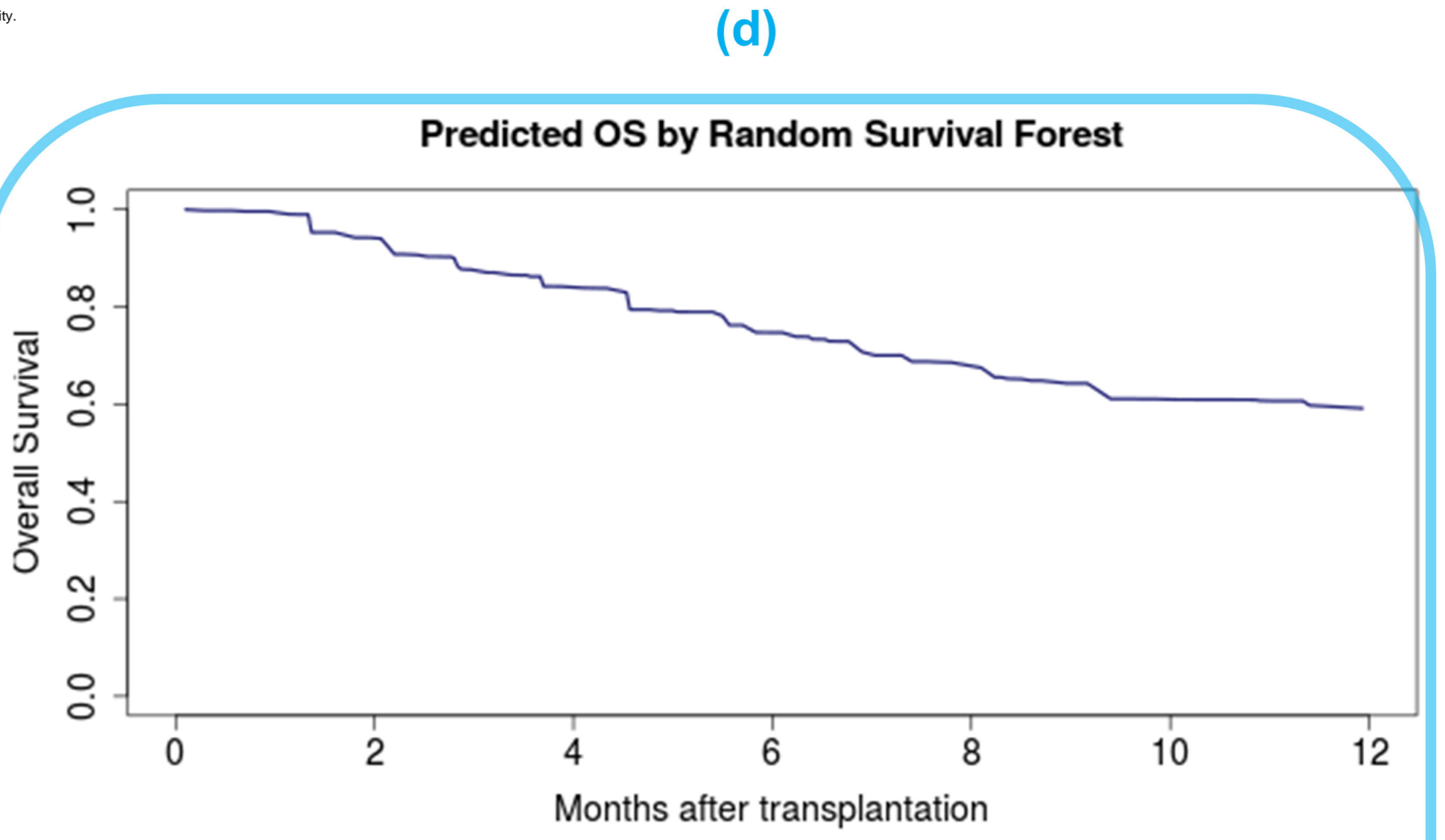
HLA 8 allele compatibility:

PS:  (0 to 3)

Donor Source:

HCT-CI:  (0 to 10)

The number of Transplantations:  (1 to 3)

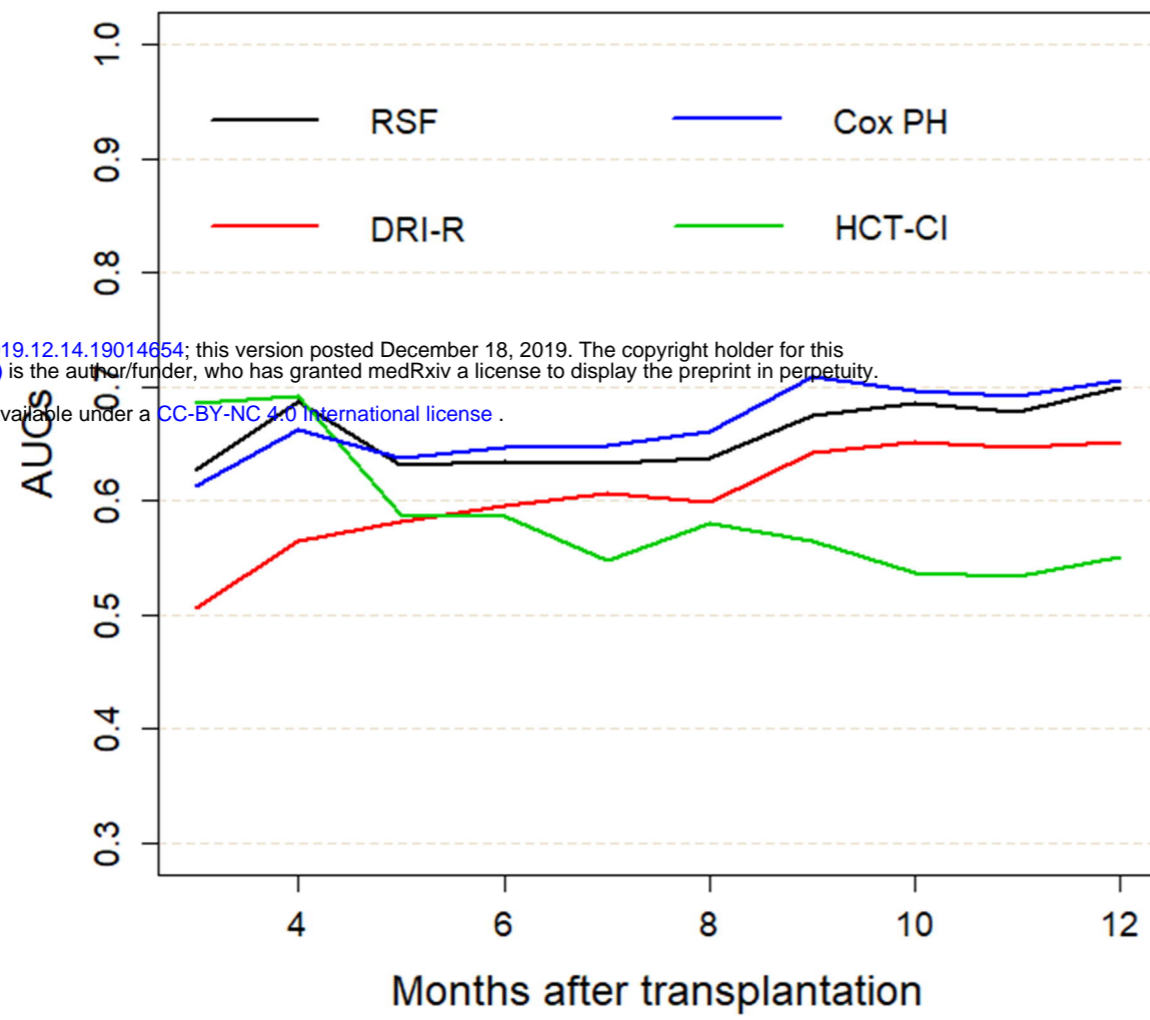


Users set eight patient-specific pre-transplant factors

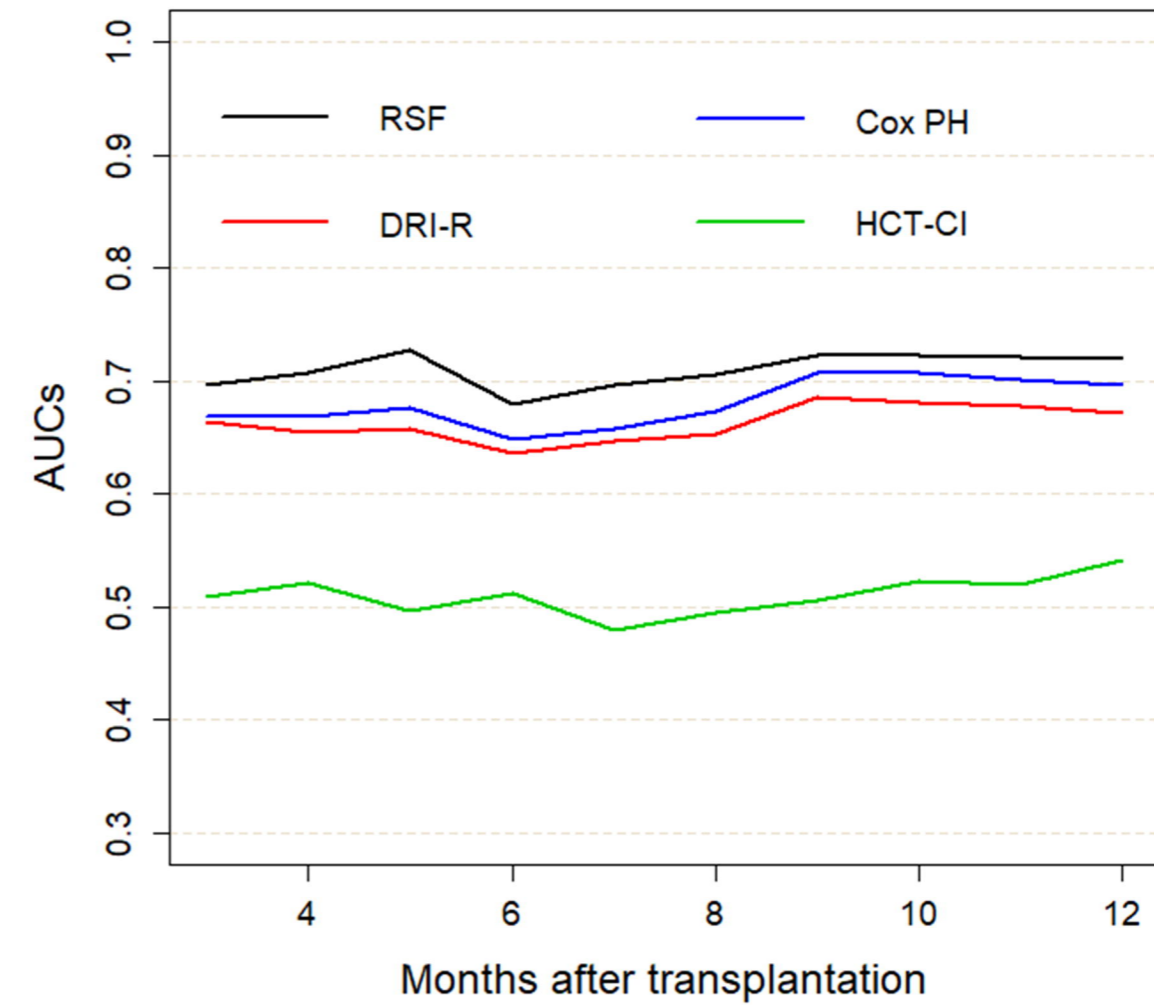
The personalized 1-year prognosis prediction curve is displayed

# Fig. 2

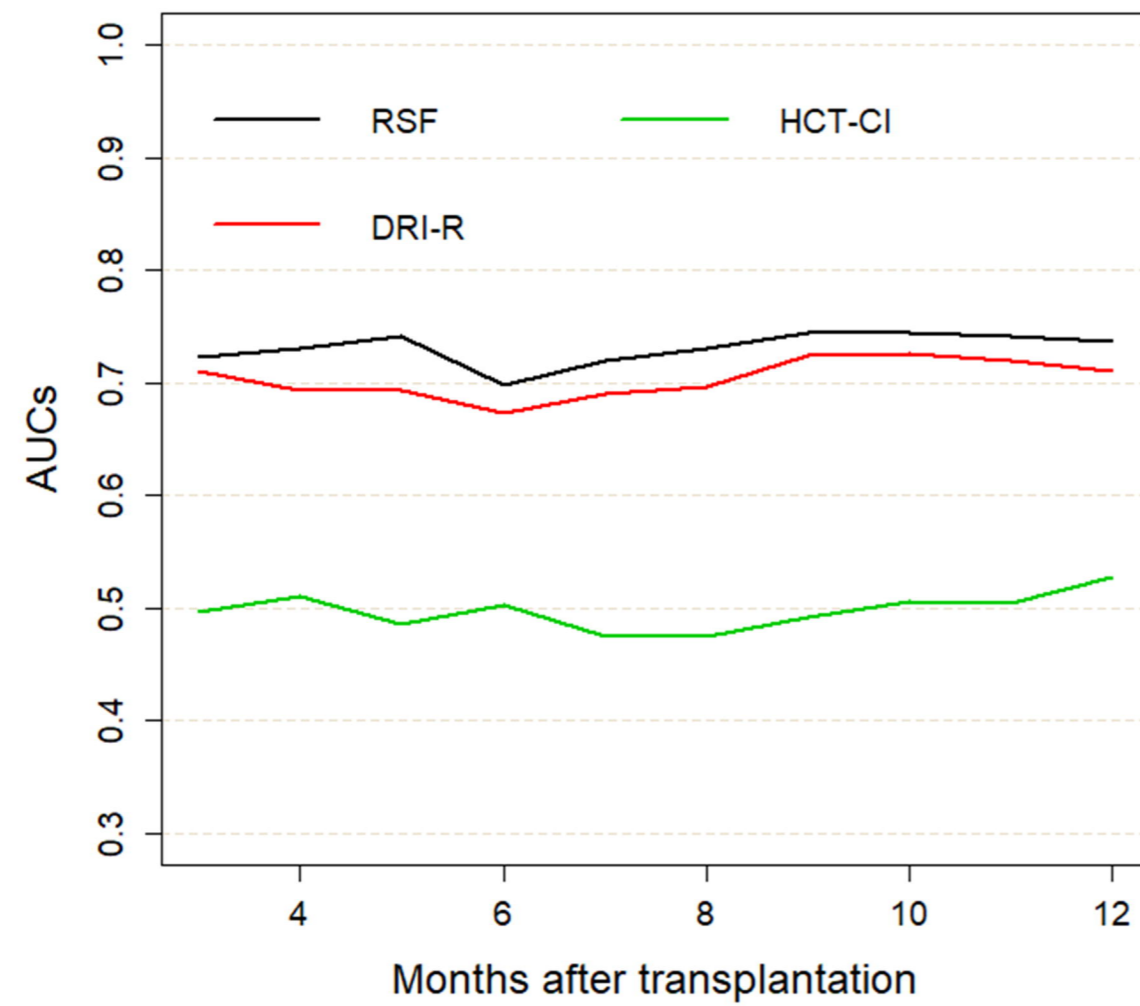
(a)



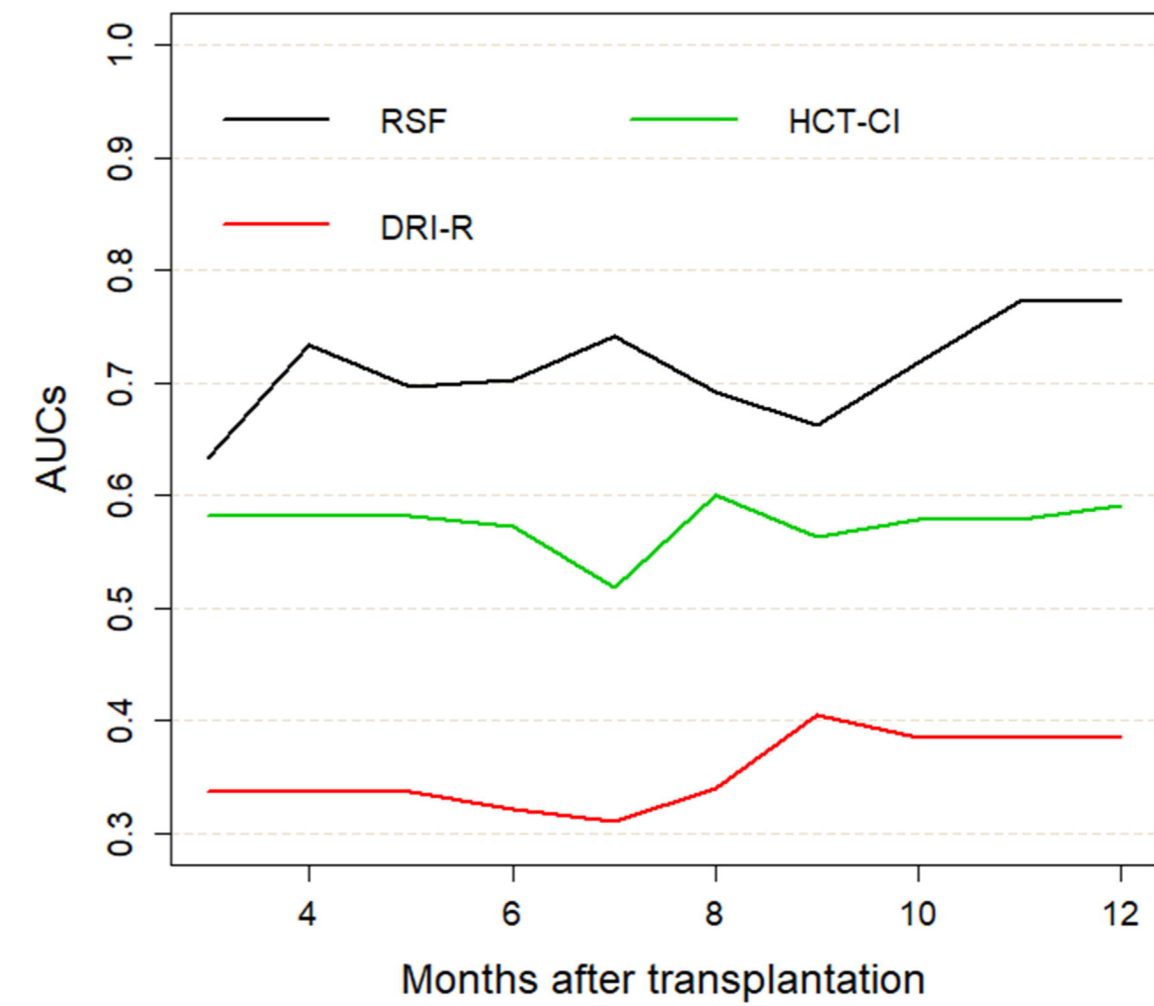
(b)



(c)



(d)



medRxiv preprint doi: <https://doi.org/10.1101/2019.12.14.19014654>; this version posted December 18, 2019. The copyright holder for this preprint (which was not certified by peer review) is the author/funder, who has granted medRxiv a license to display the preprint in perpetuity. It is made available under a [CC-BY-NC 4.0 International license](https://creativecommons.org/licenses/by-nc/4.0/).