

1 Review

2 **Brain-Computer Interface Robotics for Hand Rehabilitation**

3 **After Stroke: A Systematic Review**

4 Paul Dominick E Baniqued¹, Emily C Stanyer², Muhammad Awais², Ali Alazmani¹, Andrew
5 E Jackson¹, Mark A Mon-Williams², Faisal Mushtaq*², Raymond J Holt¹

6

7 ¹School of Mechanical Engineering, University of Leeds, LS2 9JT Leeds, United Kingdom

8 ²School of Psychology, University of Leeds, LS2 9JZ Leeds, United Kingdom

9

10 *Correspondence: f.mushtaq@leeds.ac.uk

11

12 Keywords: brain-computer interface, EEG, robotics, rehabilitation, motor imagery, stroke

13 **Abstract**

14 **Background:** Hand rehabilitation is core to helping stroke survivors regain activities of daily
15 living. Recent studies have suggested that the use of electroencephalography-based brain-
16 computer interfaces (BCI) can promote this process. Here, we report the first systematic
17 examination of the literature on the use of BCI-robot systems for the rehabilitation of fine
18 motor skills associated with hand movement and profile these systems from a technical and
19 clinical perspective.

20 **Methods:** A search for January 2010-October 2019 articles using Ovid MEDLINE, Embase,
21 PEDro, PsycINFO, IEEE Xplore and Cochrane Library databases was performed. The
22 selection criteria included BCI-hand robotic systems for rehabilitation at different stages of
23 development involving tests on healthy participants or people who have had a stroke. Data
24 fields include those related to study design, participant characteristics, technical
25 specifications of the system, and clinical outcome measures.

26 **Results:** 30 studies were identified as eligible for qualitative review and among these, 11
27 studies involved testing a BCI-hand robot on chronic and subacute stroke patients.
28 Statistically significant improvements in motor assessment scores relative to controls were
29 observed for three BCI-hand robot interventions. The degree of robot control for the majority
30 of studies was limited to triggering the device to perform grasping or pinching movements
31 using motor imagery. Most employed a combination of kinaesthetic and visual response via
32 the robotic device and display screen, respectively, to match feedback to motor imagery.

33 **Conclusion:** 19 out of 30 studies on BCI-robotic systems for hand rehabilitation report
34 systems at prototype or pre-clinical stages of development. We identified large heterogeneity
35 in reporting and emphasise the need to develop a standard protocol for assessing technical
36 and clinical outcomes so that the necessary evidence base on efficiency and efficacy can be
37 developed.

38 **Background**

39 There is growing interest in the use of robotics within the field of rehabilitation. This interest
40 is driven by the increasing number of people requiring rehabilitation following problems such
41 as stroke (with an ageing population), and the global phenomenon of insufficient numbers of
42 therapists able to deliver rehabilitation exercises to patients [1,2]. Robotic systems allow a
43 therapist to prescribe exercises that can then be guided by the robot rather than the therapist.
44 An important principle within the use of such systems is that the robots assist the patient to
45 actively undertake a prescribed movement rather than the patient's limb being moved
46 passively. This means that it is necessary for the system to sense when the patient is trying to
47 generate the required movement (given that, by definition, the patient normally struggles with
48 the action). One potential solution to this issue is to use force sensors that can detect when the
49 patient is starting to generate the movement (at which point the robot's motors can provide
50 assistive forces). It is also possible to use measures of muscle activation (EMGs) to detect the
51 intent to move [3]. In the last two decades there has been a concerted effort by groups of
52 clinicians, neuroscientists and engineers to integrate robotic systems with brain signals
53 correlated with a patient trying to actively generate a movement, or imagine a motor action,
54 to enhance the efficacy and effectiveness of stroke rehabilitation- these systems fall under the
55 definition of Brain Computer Interfaces, or BCIs [4].

56
57 BCIs allow brain state-dependent control of robotic devices to aid stroke patients during
58 upper limb therapy. While BCIs in their general form have been in development for almost
59 50 years [5] and were theoretically made possible since the discovery of the scalp-recorded
60 human electroencephalogram (EEG) in the 1920s [6], their application to rehabilitation is
61 more recent [7–9]. Graimann et al. [10] defined a BCI as an artificial system that provides
62 direct communication between the brain and a device based on the user's intent; bypassing

63 the normal efferent pathways of the body's peripheral nervous system. A BCI recognises user
64 intent by measuring brain activity and translating it into executable commands usually
65 performed by a computer, hence the term "brain-computer interface".

66

67 Most robotic devices used in upper limb rehabilitation exist in the form of exoskeletons or
68 end-effectors. Robotic exoskeletons (i.e., powered orthoses, braces) are wearable devices
69 where the actuators are biomechanically aligned with the wearer's joints and linkages;
70 allowing the additional torque to provide assistance, augmentation and even resistance during
71 training [11]. In comparison, end-effector systems generate movement through applying
72 forces to the most distal segment of the extremity via handles and attachments [11].

73 Rehabilitation robots are classified as Class II-B medical devices (i.e., a therapeutic device
74 that administers the exchange of energy, mechanically, to a patient) and safety considerations
75 are important during development [12,13]. Most commercial robots are focused on arms and
76 legs, each offering a unique therapy methodology. There is also a category of device that
77 target the hand and finger. While often less studied than the proximal areas of the upper limb,
78 hand and finger rehabilitation are core component in regaining activities of daily living
79 (ADL) [14]. Many ADLs require dexterous and fine motor movements (e.g. grasping and
80 pinching) and there is evidence that even patients with minimal proximal shoulder and elbow
81 control can regain some hand capacity long-term following stroke [15].

82

83 The strategy of BCI-robot systems (i.e. systems that integrate BCI and robots into one unified
84 system) in rehabilitation is to recognise the patient's intention to move or perform a task via a
85 neural or physiological signal, and then use a robotic device to provide assistive forces in a
86 manner that mimics the actions of a therapist during standard therapy sessions [16]. The
87 resulting feedback is patient-driven and is designed to aid in closing the neural loop from

88 intention to execution. This process is said to promote use-dependent neuroplasticity within
89 intact brain regions and relies on the repeated experience of initiating and achieving a
90 specified target [17,18]; making the active participation of the patient in performing the
91 therapy exercises an integral part of the motor re-learning process [19,20].

92

93 The aforementioned scalp-recorded EEG signal is a commonly used instrument for data
94 acquisition in BCI systems because it is non-invasive, easy to use and can detect relevant
95 brain activity with high temporal resolution [21,22]. In principle, the recognition of motor
96 imagery (MI), the imagination of movement without execution, via EEG can allow the
97 control of a device independent of muscle activity [10]. It has been shown that MI-based BCI
98 can discriminate motor intent by detecting event-related spectral perturbations (ERSP)
99 [23,24] and/or event-related desynchronisation/synchronisation (ERD/ERS) patterns in the μ
100 (9-11 Hz) and β (14-30 Hz) sensorimotor rhythm of EEG signals [24]. However, EEG also
101 brings with it some challenges. These neural markers are often concealed by various artifacts
102 and may be difficult to recognise through the raw EEG signal alone. Thus, signal processing
103 (including feature extraction and classification) is a vital part of obtaining a good MI signal
104 for robotic control. A general pipeline for EEG data processing involves several steps. First,
105 the data undergo a series of pre-processing routines (e.g., filtering and artifact removal)
106 before feature extraction and classification for use as a control signal for the robotic hand.
107 There are variety of methods to remove artifact from EEG and these choices depend on the
108 overall scope of the work [25]. For instance, Independent Component Analysis (ICA) and
109 Canonical Correlation Analysis (CCA) can support real-time applications but are dependent
110 on manual input. In contrast, regression and wavelet methods are automated but support
111 offline applications. There also exist automated and real-time applications such as adaptive
112 filtering or using blind source separation (BSS) based methods. Recently, the research

113 community has been pushing real-time artifact rejection by reducing computational
114 complexity e.g. Enhanced Automatic Wavelet-ICA (EAWICA) [26], hybrid ICA - Wavelet
115 transform technique (ICA-W) [27] or by developing new approaches such as adaptive de-
116 noising frameworks [28] and Artifact Subspace Reconstruction (ASR) [29]. Feature
117 extraction involves recognising useful information (e.g., spectral power, time epochs, spatial
118 filtering) for better discriminability among mental states. For example, the common spatial
119 patterns (CSP) algorithm is a type of spatial filter that maximises the variance of band pass-
120 filtered EEG from one class to discriminate it from another [30]. Finally, classification
121 (which can range from linear and simple algorithms such as Linear Discriminant Analysis
122 (LDA), Linear Support Vector Machine (L-SVM) up to more complex techniques in deep
123 learning such as Convolutional Neural Networks (CNN) and Recurrent Neural Networks
124 (RNN) [31,32] involves the translation of these signals of intent to an action that provides the
125 user feedback and closes the loop of the motor intent-to-action circuit.

126

127 The potential of MI-based BCIs has gained considerable attraction because the neural activity
128 involved in the control of the robotic device may be a key component in the rehabilitation
129 itself. For example, MI of movement is thought to activate some of the neural networks
130 involved in movement execution (ME) [33–36]. The resulting rationale is that encouraging
131 the use of MI could increase the capacity of the motor cortex to control major muscle
132 movements and decrease the necessity to use neural circuits damaged post-stroke. The
133 scientific justification for this approach was first provided by Jeannerod [36] who suggested
134 that the neural substrates of MI are part of a shared network that is also activated during the
135 simulation of action by the observation of action (AO) [36]. These ‘mirror neuron’ systems
136 are thought to be an important component of motor control and learning [36] - hence the
137 belief that activating these systems could aid rehabilitation. The use of a MI-BCI to control a

138 robot in comparison to traditional MI and physical practice provides a number of benefits to
139 its user and the practitioner. These advantages include the fact that the former can provide a
140 more streamlined approach such as sensing physiological states, automating visual and/or
141 kinaesthetic feedback and enriching the task and increasing user motivation through
142 gamification. There are also general concerns around the utility of motor imagery without
143 physical movement (and the corresponding muscle development that comes from these) and
144 it is possible that these issues could be overcome through a control strategy that progressively
145 reduces the amount of support provided by the MI-BCI system and encourages active motor
146 control [37,38].

147

148 A recent meta-analysis of the neural correlates of action (MI, AO and ME) quantified
149 ‘conjunct’ and ‘contrast’ networks in the cortical and subcortical regions [33]. This analysis,
150 which took advantage of open-source historical data from fMRI studies, reported consistent
151 activation in the premotor, parietal and somatosensory areas for MI, AO and ME. Predicated
152 on such data, researchers have reasoned that performing MI should cause activation of the
153 neural substrates that are also involved in controlling movement and there have been a
154 number of research projects that have used AO in combination with MI in neurorehabilitation
155 [39–41] and motor learning studies [42,43] over the last decade.

156

157 One implication of using MI and AO to justify the use of BCI approaches is that great care
158 must be taken with regard to the quality of the environment in which the rehabilitation takes
159 place. While people can learn to modulate their brain rhythms without using motor imagery
160 and there is variability across individuals in their ability to imagine motor actions, MI-driven
161 BCI systems require (by design at least) for patient to imagine a movement. Likewise, AO
162 requires the patients to clearly see the action. This suggests that the richness and vividness of

163 the visual cues provided is an essential part of an effective BCI system. It is also reasonable
164 to assume that feedback is important within these processes and thus the quality of feedback
165 should be considered as essential. Afterall, MI and AO are just tools to modulate brain states
166 [40] and the effectiveness of these tools vary from one stroke patient to another [44]. Finally,
167 motivation is known to play an important role in promoting active participation during
168 therapy [20,45]. Thus, a good BCI system should incorporate an approach (such as gaming
169 and positive reward) that increases motivation. Recent advances in technology make it far
170 easier to create a rehabilitation environment that provides rich vivid cues, gives salient
171 feedback and is motivating. For example, the rise of immersive technologies, including
172 virtual reality (VR) and augmented reality (AR) platforms [46,45,47], allows for the creation
173 of engaging visual experiences that have the potential to improve a patient's self-efficacy [48]
174 and thereby encourage the patient to maintain the rehabilitation regime. One specific example
175 of this is visually amplifying the movement made by a patient when the movement is of
176 limited extent so that the patient can see their efforts are producing results [49].

177

178 In this review we set out to examine the literature to achieve a better understanding of the
179 current value and potential of BCI-based robotic therapy with three specific objectives:

180 (1) Identify how BCI technologies are being utilised in controlling robotic devices for
181 hand rehabilitation. Our focus was on the study design and the tasks that are
182 employed in setting up a BCI-hand robot therapy protocol.

183 (2) Document the readiness of BCI systems. Because BCI for rehabilitation is still an
184 emerging field of research, we expected that most studies would be in their proof-of-
185 concept or clinical testing stages of development. Our purpose was to determine the
186 limits of this technology in terms of: (a) resolution of hand MI detection and (b) the
187 degree of robotic control.

188 (3) Evaluate the clinical significance of BCI-hand robot systems by looking at the
189 outcome measures in motor recovery and determine if a standard protocol exists for
190 these interventions.

191

192 It is important to note that there have been several recent reviews exploring BCI for stroke
193 rehabilitation. For example, Monge-Pereira et al. [50] compiled EEG-based BCI studies for
194 upper limb stroke rehabilitation. Their systematic review (involving 13 clinical studies on
195 stroke and hemiplegic patients) reported on research methodological quality and
196 improvements in the motor abilities of stroke patients. Cervera et al. [51] performed a meta-
197 analysis on the clinical effectiveness of BCI-based stroke therapy among 9 randomised
198 clinical trials (RCT). McConnell et al. [52] undertook a narrative review of 110 robotic
199 devices with brain-machine interfaces for hand rehabilitation post-stroke. These reviews, in
200 general, have reported that such systems provide improvements in both functional and
201 clinical outcomes in pilot studies or trials involving small sample sizes. Thus, the literature
202 indicates that EEG-based BCI are a promising general approach for rehabilitation post-stroke.
203 The current work complements these previous reports by providing the first systematic
204 examination on the use of BCI-robot systems for the rehabilitation of fine motor skills
205 associated with hand movement and profiling these systems from a technical and clinical
206 perspective.

207 **Methods**

208 **Protocol Registration**

209 Details of the protocol for this systematic review were registered on the International
210 Prospective Register of Systematic Reviews (PROSPERO) and can be accessed at
211 www.crd.york.ac.uk/PROSPERO (ID: CRD42018112107).

212

213 **Search Strategy and Eligibility**

214 An in-depth search of articles from January 2010 to October 2019 was performed on Ovid
215 MEDLINE, Embase, PEDro, PsycINFO, IEEE Xplore and Cochrane Library. Only full-text
216 articles published in English were selected for this review. Table 1 shows the combination of
217 keywords used in the literature searching.

218

219 **Table 1. Keyword Combinations**

Set 1 (OR)	Set 2 (OR)	Set 3 (OR)
Brain-computer interface/BCI	Stroke (rehabilitation/	Robotic (exoskeleton/
Electroencephalography/EEG	therapy/treatment/recovery)	orthosis)
Brain-machine interface/BMI	Motor (rehabilitation,	Powered (exoskeleton/
Neural control interface	AND therapy/treatment/recovery)	AND orthosis)
Mind-machine interface	Neurorehabilitation	Robot
	Neurotherapy	Device
	Hand (rehabilitation/therapy/ recovery/exercises/movement)	

220

221 The inclusion criteria for the articles were: (1) publications that reported the development of
222 an EEG-based BCI; (2) studies targeted towards the rehabilitation of the hand after stroke; (3)
223 studies that involved the use of BCI and a robotic device (e.g., exoskeleton, end-effector type,
224 platform-types, etc.); (4) studies that performed a pilot test on healthy participants or a
225 clinical trial with people who have had a stroke. The articles were also screened for the

226 following exclusion criteria: (1) studies that targeted neurological diseases other than stroke;
227 (2) studies that used other intention sensing mechanisms (electromyography/EMG,
228 electrooculography/EOG, non-paretic hand, other body parts, etc.).

229

230 Two authors performed independent screenings of titles and abstracts based on the inclusion
231 and exclusion criteria. The use of a third reviewer was planned a priori in cases where a lack
232 of consensus existed around eligibility. However, consensus was achieved from the first two
233 authors during this stage. Full-text articles were then obtained, and a second screening was
234 performed until a final list of studies was agreed to be included for data extraction.

235

236 **Data Extraction**

237 The general characteristics of the study and their corresponding results were extracted from
238 the full-text articles by the reviewers following the Preferred Reporting Items for Systematic
239 Reviews and Meta-Analysis (PRISMA) checklist. Data fields were extracted and categorised
240 as follows:

- 241 • Participant characteristics: sample population, healthy or stroke patients, handedness,
242 age, sex, acute or chronic stroke classification, and mean duration since stroke
- 243 • Study design: general description of study design, experimental and control groups
- 244 • Task design: description of the task instructed, and stimuli presentation (cue and
245 feedback modalities, i.e.: visual, kinaesthetic, auditory, etc.)
- 246 • Technical specifications of the system: EEG system used (including number of
247 channels), robot device used (e.g. hand exoskeleton, end-effector, etc.), actuation
248 mode, and control strategy

- 249 • Main outcomes of the study: clinical outcomes (for studies involving stroke patients),
250 classification accuracies (participant, group and study-levels), other significant
251 findings

252 This data extraction strategy allowed us to further evaluate the technology and clinical use of
253 the BCI-robot systems used in this study.

254

255 **Technology Evaluation**

256 *EEG Acquisition*

257 The signal acquisition element of an EEG-based BCI is critical to its success in recognising
258 task-related intent. To better understand current practice, we gathered the type of electrode
259 used (i.e., standard saline-soaked, gel or dry electrodes), the number of channels and its
260 corresponding placement in the EEG cap. To illustrate where signals are recorded from, we
261 plotted the frequency with which electrodes were used across studies on a topographical map
262 using the 10-20 international electrode placement system.

263

264 *Signal Processing*

265 We evaluated the signal processing strategies used by each study looking specifically at the
266 feature extraction and classification techniques within the data pipeline. For the studies that
267 reported classification accuracies (i.e., comparing the predicted class against the ground
268 truth), we were able to compare their results among the current state-of-the-art classification
269 accuracies published in literature.

270

271 *Robot-Assisted Rehabilitation*

272 As the receiving end of the BCI pipeline and the provider of kinaesthetic feedback to the
273 user, the robot-assisted device for hand rehabilitation plays a key role in providing the

274 intervention in this therapy regimen. The robot components were evaluated based on their
275 actuation type, targeted body-part (i.e., single-finger, multi-finger, whole hand), and control
276 strategy. We also reported on commercially available systems, which having passed a series
277 of regulatory processes making them fit for commercial use, were classified as gold standard
278 devices.

279

280 *Technological Readiness*

281 We assessed the development stages of the system as a whole by performing a Technological
282 Readiness Assessment (TRA). Using this strategy, we were able to determine the maturity of
283 the systems through a Technology Readiness Level (TRL) scale of 1-9 and quantify its
284 implementation in a research or clinical setting [56]. Since a BCI-robot for rehabilitation can
285 be categorised as a Class II-B medical device we have adapted a customised TRL scale to
286 account for these requirements [56]. The customised TRL accounts for prototype
287 development and pilot testing in human participants (TRL 3), safety testing (TRL 4-5), and
288 small scale (TRL 6) to large scale (TRL 7-8) clinical trials. Performing a TRA on each device
289 should allow us to map out where the technology is in terms of adoption and perceived
290 usefulness. For example, if most of the studies have used devices that have TRL below the
291 clinical trials stage (TRL 6-8), then we can have some confidence that said BCI-robot system
292 is not yet widely accepted in the clinical community. In this way we can focus on questions
293 that improve our understanding on the factors that impede its use as a viable therapy option
294 for stroke survivors.

295

296 **Clinical Use**

297 *Clinical Outcomes Measures*

298 For studies involving stroke patients, clinical outcomes were obtained based on muscle
299 improvement measures such as Fugl-Meyer Motor Assessment Upper Extremity (FMA-UE)
300 scores [53], Action Research Arm Test (ARAT) scores [54], United Kingdom Medical
301 Research Council (UK-MRC) muscle grade [55], Grip Strength (GS) Test and Pinch Strength
302 (PS) Test scores (i.e., kilogram force collected using an electronic hand dynamometer)
303 among others.

304

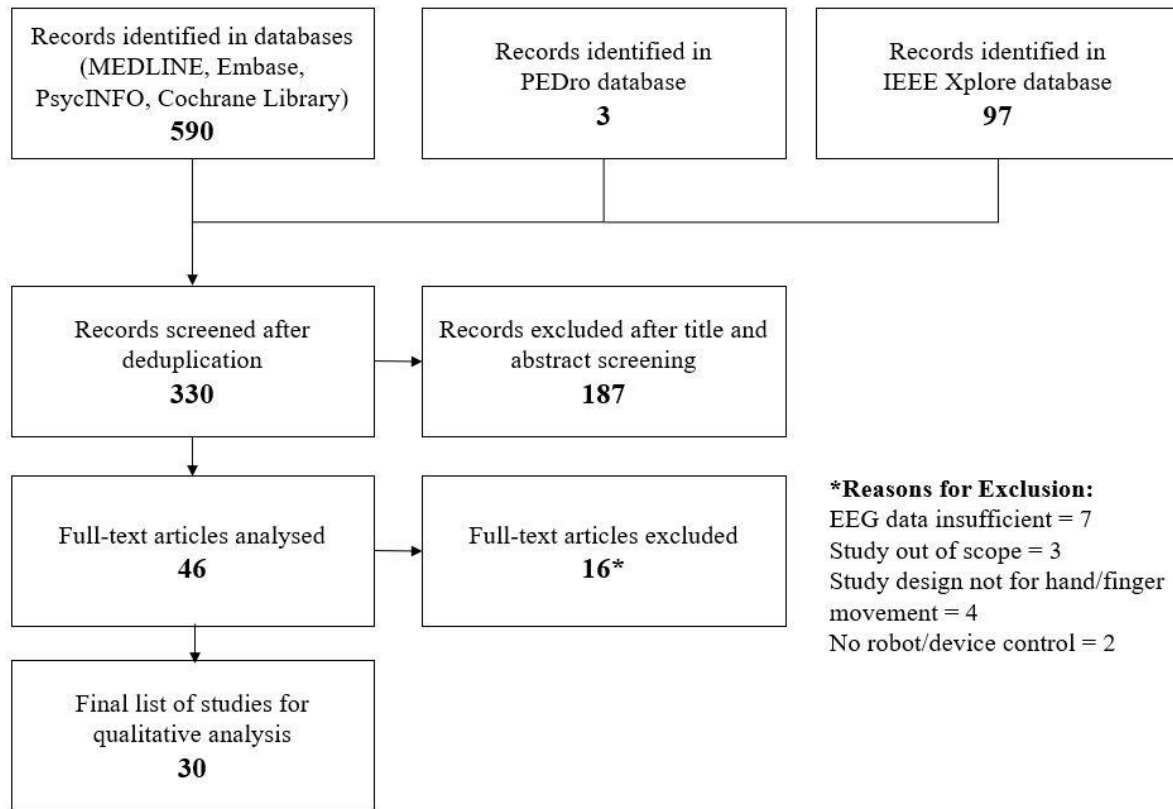
305 *Physiotherapy Evidence Database (PEDro) Scale for Methodological Quality*

306 A methodological quality assessment was also performed for clinical studies based on the
307 PEDro Scale [57]. This scale evaluates studies with a checklist of 11 items based on experts'
308 consensus criteria in physiotherapy practice. The complete details of the criteria can be found
309 online [58]. A higher score in the PEDro scale (6 and above) implied better methodological
310 quality but are not used as a measure of validity in terms of clinical outcomes. Pre-defined
311 scores from this scale were already present in studies appearing in the PEDro search.
312 However, studies without PEDro scores or are not present in the PEDro database at all had to
313 be manually evaluated by the authors against the 11-item checklist (five of seven studies).

314 Results

315 Search Results

316 Figure 1 shows the study selection process and the number of articles obtained at each stage.



317

318

Figure 1. Study Selection Flowchart

319

320 A total of 590 studies were initially identified. After deduplication, 330 studies underwent
321 title and abstract screening. Forty six studies passed this stage and among these, 16 were
322 removed after full-text screening due to the following reasons: insufficient EEG and robotic
323 data [59–65], the study was out of scope [66–68], the study design was not for hand/finger
324 movement [69–72], no robot or mechatronic device was involved in the study [73,74]. A final
325 sample of 30 studies were included in the qualitative review. Among the 30 studies, 11 [75–
326 85] were involved in testing the BCI-hand robot system on chronic and subacute stroke

327 patients ([75,80] are RCTs) while the rest involved testing on healthy participants [86–104].

328 Table 2 shows a summary of the relevant data fields extracted from these studies.

329

330 **[Table 2 Around Here]**

331

332 *Studies with Healthy Participants (Prototype Group)*

333 The studies which involved pilot testing on healthy human participants had a combined total
334 of 207 individuals (sample size ranging from 1-32) who had no history of stroke or other
335 neurological diseases. Right-handed individuals made up 44.24% of the combined population
336 while the other 55.76% were unreported. These studies aimed to report the successful
337 implementation of a BCI-robot system for hand rehabilitation and were more heterogeneous
338 in terms of study and task designs than those studies that involved clinical testing. The most
339 common approach was to design and implement a hand orthosis controlled by MI which
340 accounted for 9 out of the 19 studies and were measured based on classification accuracy
341 during the calibration/training period and online testing. Li et al. [88] and Stan et al. [94] also
342 aimed to trigger a hand orthosis but instead of MI, the triggers used by Li et al. is based on an
343 attention threshold while Stan et al. used a vision-based P300 speller BCI. Bauer et al. [97]
344 compared MI against ME using a BCI-device while Ono et al. [100] studied the
345 implementation of an action observation strategy with a combined visual and kinaesthetic
346 feedback or auditory feedback. Five more studies [91,95,96,98,99] focused on varying the
347 feedback while two more [89,101] assessed the performance and safety of a hybrid BCI with
348 EMG, EOG or both.

349

350 *Studies with Stroke Patients (Clinical Group)*

351 A total of 208 stroke patients (with sample size varying 3-74) were involved in the 11 clinical
352 studies. One study [75] reported a 3-armed RCT with control groups as device-only and SAT
353 while another study [80] was a multi-centre RCT with sham as the control group. Five studies
354 were uncontrolled – where the aims were either to study classification accuracies during
355 sessions [76], to monitor clinical outcomes improvement from Day 0 until the end of the
356 programme [77,85] or both [79,82]. Two studies [83,84] compared effects of the intervention
357 against SHAM feedback. Another study [78] compared the classification accuracies of healthy
358 and hemiplegic stroke patients against two BCI classifiers while the remaining study [81]
359 compared classification accuracies from stroke patients who receive congruent or incongruent
360 visual and kinaesthetic feedback.

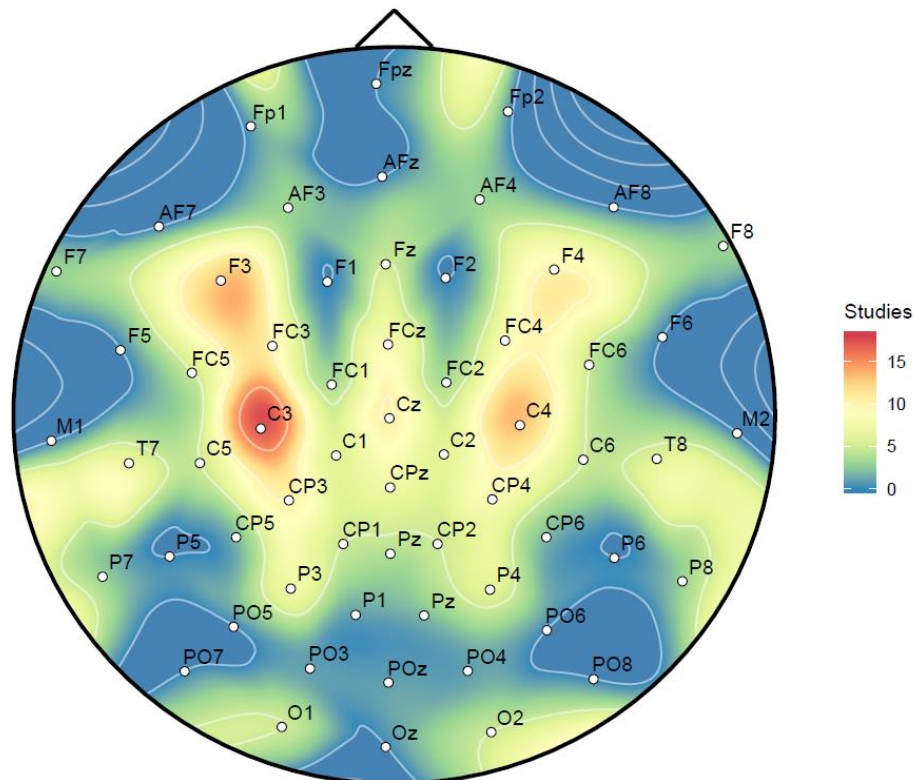
361

362 **Technology Evaluation**

363 *EEG Acquisition*

364 The EEG acquisition systems involved in the studies ranged from low-cost devices having few
365 electrode channels (2-15 gel or saline-soaked silver/silver chloride [Ag/AgCl] electrodes) to
366 standard EEG caps that had higher spatial resolution (16-256 gel or saline-soaked Ag/AgCl
367 electrodes). The placement of EEG channels was accounted for by studies involving MI
368 (N=21). This allowed us to determine the usage frequency among electrodes and is presented
369 in Figure 2 as a heat map generated in R Studio (using the packages: “akima”, “ggplot2” and
370 “reshape2”) against the 10-20 international electrode placement system.

371



372

373

Figure 2. EEG Channel Usage across Motor Imagery Studies (N=21)

374

375 It can be seen that the EEG channels used for MI studies are concentrated towards electrodes
376 along the central sulcus (C) region and the frontal lobe (F) region of the placement system
377 where the motor cortex strip lies. Among these, C3 (N=17) and F3 (N=14) were mostly used,
378 presumably because a majority of the participants were right-handed. The next most frequent
379 were C4 (N=13) and the electrodes F4, Cz and CP3 (N=10).

380

381 *Signal Processing: Feature Extraction and Classification*

382 In the EEG-based BCI studies examined, it was found that the feature extraction and
383 classification techniques were variable between systems. Table 3 provides a summary of pre-
384 processing, feature extraction and classification techniques across the studies. There was a
385 wide variation in the implemented signal processing strategies, but a unifying theme across

386 studies was the attempt to: (i) discriminate mental states recorded in EEG across different
387 manual tasks; (ii) classify the different states to produce a viable signal.

388

389 **Table 3. BCI Feature Extraction and Classification**

Study	Pre-Processing	Feature Extraction	Classification	Hand Task
Ang et al. [75]	Band-pass (0.05-40 Hz)	Filter Bank Common Spatial Pattern (FBCSP) algorithm [105]	Calibration model (unspecified)	MI vs rest
Barsotti et al. [76]	Band-pass (8-24 Hz)	ERD (β and μ - decrease), CSP	SVM with linear kernel	MI vs rest
Bauer et al. [97]	Band-pass (6-16 Hz using zero- phase lag FIR	ERD (β -decrease)	Linear autoregressive model based on Burg Algorithm	MI vs rest
Bundy et al. [77]	Unspecified	ERD (β and μ - decrease)	Linear autoregressive model	MI (affected, unaffected) vs rest
Chowdhury et al. [78]	Band-pass (0.1 Hz-100 Hz), Notch (50 Hz)	CSP Covariance- based, ERD/ERS (β and μ -change)	SVM with linear kernel, Covariate Shift Detection (CSD)-based Adaptive Classifier	left vs right MI
Coffey et al. [92]	Band-pass (0.5 Hz-30 Hz), Notch (50 Hz)	CSP Covariance- based	Linear Discriminant Analysis (LDA) classifier	MI vs rest
Diab et al. [103]	Unspecified	Time epochs (unspecified)	Artificial Neural Network (ANN)-based Feed Forward Back Propagation	Non-MI open vs closed
Frolov al. [80]	Band-pass (5-30 Hz), FIR (order 101), IIR notch Chebyshev type I filter (50 Hz)	Time epochs (10 s)	Bayesian-based EEG covariance classifier [106]	MI (affected, unaffected) vs rest
Ono et al. [81]	Band-pass (0.5- 30 Hz), notch (50 or 60 Hz)	Time epochs (700 ms), ERD (μ - decrease)	Linear Discriminant Analysis (LDA) classifier	MI vs rest

Ramos-Murguialday et al. [95]	Unspecified	Time epochs (5 s), Spatial filter, ERD/ERS (β and μ - change)	Linear autoregressive model	MI vs rest
Vukelic and Gharabaghi [99]	High-pass (unspecified)	ERD (β -decrease)	Linear autoregressive model based on Burg Algorithm	MI vs rest
Witkowski et al. [101]	Band-pass (0.4- 70 Hz), Laplacian filter	ERD/ERS (β and μ - change)	Linear autoregressive model based on Yule-Walker algorithm	MI vs rest

390

391

SVM = Support Vector Machines, FIR = Finite Impulse Response, IIR = Infinite Impulse Response

392

393 While classification accuracy is contingent on the number of mental state classes the system is
 394 trying to discriminate, classification accuracies do provide a comparable metric among BCI
 395 systems. In our review, we found high variation in the reported mean classification accuracies
 396 among the BCI systems in this study (i.e., 2-class left-hand and right-hand classification)-
 397 ranging from 40% (below chance-level) [80–82] up to 95% [88,93,103,104]. For reference,
 398 two recent reviews on the state-of-the-art in classification accuracies for motor imagery BCI
 399 find ranges between 63-97% [107] and 68-90% [108].

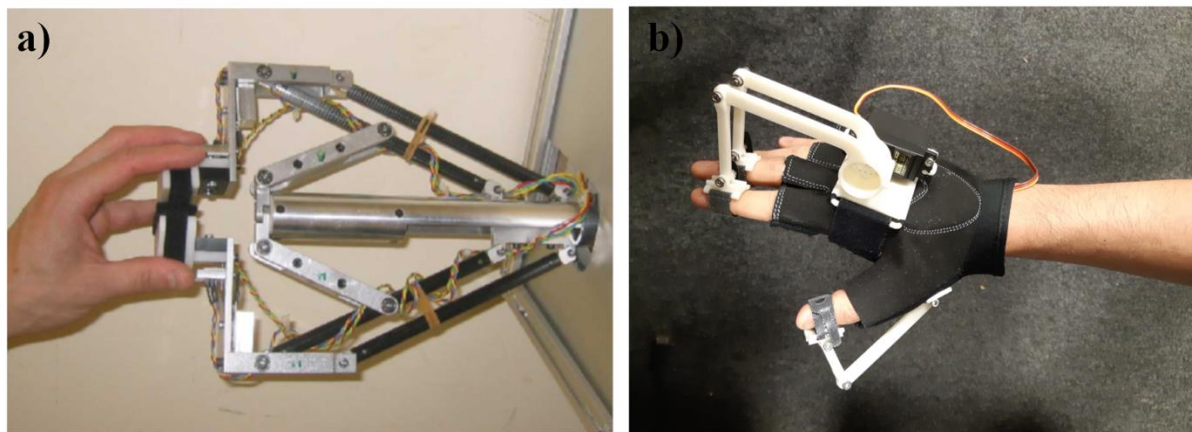
400

401 *Robot-Assisted Rehabilitation*

402 Robotic hand rehabilitation systems provide kinaesthetic feedback to the user during BCI trials.
 403 Most of these devices are powered by either DC motors, servomotors or pneumatic actuators
 404 that transmit energy via rigid links or Bowden cables in a tendon-like fashion. The studies in
 405 this review included single-finger [84–86], multi-finger [82] (including EMOHEX [78,79,87]),
 406 full hand gloves [88,89] (including mano: Hand Exoskeleton [90] and Gloreha [91]) and full
 407 arm exoskeletons with isolated finger actuation (BRAVO-Hand [76]). Nine of the studies
 408 [77,87,88,90,92–96] presented their novel design of a hand rehabilitation device within the
 409 article while some reported on devices reported elsewhere (i.e., in a previous study of the group

410 or a research collaborator). Two commercially-available devices were also used: AMADEO
411 (Tyromotion, Austria) is an end-effector device used in 3 studies [97–99], and Gloreha
412 (Idrogenet, Italy) is a full robotic hand glove used by Tacchino et al. [91]. AMADEO and
413 Gloreha are both rehabilitation devices that have passed regulatory standards in their respective
414 regions. AMADEO remains the gold standard for hand rehabilitation devices as it has passed
415 safety and risk assessments and provided favourable rehabilitation outcomes. The International
416 Classification of Functioning, Disability and Health (ICF) provides three specific domains that
417 can be used to assess an intervention of this kind: improving impairments, supporting
418 performance of activities and promoting participation [109,110]. In this case, a gold standard
419 device not only prioritises user safety (established early in the development process) but also
420 delivers favourable outcomes in scales against these domains. Figure 3 shows the main types
421 of robotic hand rehabilitation devices.

422



423

424 **Figure 3. Robotic hand rehabilitation devices: a) An end-effector device (Haptic Knob)**
425 **used in one of the extracted studies [75,111], b) a wearable hand exoskeleton/orthosis**
426

427 *Technology Readiness Assessment*

428 A Technology Readiness Assessment (TRA) [56] was performed for each study and the
429 Technology Readiness Levels (TRL) are presented in Table 4. While some of the system
430 components (especially among robotic devices) were commercially available (having TRL

431 9+), we performed a TRA on the whole system (the interaction between BCI and robotics) to
 432 provide an evaluation of its maturity and state-of-the-art development with regard to
 433 rehabilitation medicine. We further assessed the TRL of each system at the time of the
 434 publication and its subsequent development.

435

436 **Table 4. Technology Readiness Assessment of the BCI-Hand Robot Systems**

Levels	Description	Studies
TRL 1	<ul style="list-style-type: none"> • Lowest level of technological readiness • Literature reviews and initial market surveys • Scientific application to defined problems 	
TRL 2	<ul style="list-style-type: none"> • Generation of hypotheses • Development of research plans and/or protocols 	
TRL 3	<ul style="list-style-type: none"> • Testing of hypotheses – basic research, data collection and analysis • Testing of design/prototype – verification and critical component specifications • Initial proof-of-concept in limited amount of laboratory/animal models 	Most studies from the prototype group (N=18) [86–100,102–104]
TRL 4	<ul style="list-style-type: none"> • Proof-of-concept of device/system in defined laboratory/animal models • Safety testing – problems, adverse events and potential side effects 	Witkowski et al., 2014 [101]
TRL 5	<ul style="list-style-type: none"> • Comparison of device/system to other existing modalities or equivalent devices/systems • Further development – testing through simulation (tissue or organ models), animal testing • Drafting of Product Development Plan 	Barsotti et al., 2015 [76], Ono et al., 2016 [81], Chowdhury et al., 2018-b [78], Tsuchimoto et al., 2019 [84]

TRL 6	<ul style="list-style-type: none">• Small scale clinical trials (Phase 1) – under carefully controlled and intensely monitored clinical conditions	Carino-Escobar et al., 2019 [85], Chowdhury et al., 2018-c [79], Norman et al., 2018 [82], Wang et al., 2018 [83]
TRL 7	<ul style="list-style-type: none">• Clinical trials (Phase 2) – safety and effectiveness integration in operational environment	Ang et al., 2014 [75], Frolov et al., 2017 [80]
TRL 8	<ul style="list-style-type: none">• Clinical trials (Phase 3) – evaluation of overall risk-benefit of device/system use• Confirmation of QSR compliance• Awarding of PMA for device/system by CDRH or equivalent agency	
TRL 9	<ul style="list-style-type: none">• The device/system may be distributed/marketed	

437

438 QSR = Quality System Requirements, PMA = Premarket Approval, CDRH = Center for Devices and Radiological Health

439

440 **Clinical Use**

441 *Clinical Outcomes Measures*

442 Most of the studies adopted FMA-UE, ARAT and GS measurements to assess clinical
443 outcomes. Six studies [75,77,79,80,83,85] reported patient improvement in these measures
444 when subjected to BCI-hand robot interventions; in contrast with their respective controls or
445 as recorded through time in the programme. For Ang et al. [75], FMA-UE Distal scores were
446 reported in weeks 3, 6, 12 and 24 and the BCI-device group (N=6) yielded the highest
447 improvement in scores across all time points as compared to the device only (N=8) and SAT
448 (N=7) groups. Bundy et al. [77] reported an average of 6.20±3.81 improvement in the ARAT
449 scores of its participants (N=10) in the span of 12 weeks while Chowdhury et al. [79] reported
450 a group mean difference of +6.38 kg (p=0.06) and +5.66 (p<0.05) in GS and ARAT scores,
451 respectively (N=4). Frolov et al.'s [80] multi-centre RCT reported a higher improvement in

452 the FMA-UE Distal, ARAT Grasp and ARAT Pinch scores of the BCI-device group (N=55)
453 when compared to the control/SHAM group (N=19), but not in the ARAT Grip scores where
454 the values are both equal to 1.0 with $p < 0.01$ for the BCI-device group and $p = 0.045$ for the
455 control.

456

457 *Physiotherapy Evidence Database (PEDro) Scale for Methodological Quality*

458 For the studies that had a clinical testing component, a methodological quality assessment by
459 the PEDro Scale was performed. Two studies which appeared on the PEDro search [75,80]
460 had predetermined scores in the scale and were extracted for this part while the rest were
461 manually evaluated by the authors. Table 5 shows the results of the methodological quality
462 assessment against the scale. Note that in the PEDro Scale, the presence of an eligibility
463 criteria is not included in the final score.

464

465 **Table 5. Methodological Quality of Clinical Studies based on PEDro Scale**

Criteria		Ang et al.	Barsotti et al.	Bundy et al.	Carino-Escobar et al.	Chowdhury-b	Chowdhury-c	Frolov et al.	Norman et al.	Ono et al.	Tsuchimoto et al.	Wang et al.
1	Eligibility criteria*	1	1	1	1	1	1	1	1	0	1	1
2	Random allocation	1	0	0	0	0	0	1	0	0	1	1
3	Concealed allocation	0	0	0	0	0	0	0	0	0	1	1
4	Baseline comparability	1	0	1	0	1	1	1	0	0	0	0
5	Blind subjects	0	0	0	0	0	0	0	0	0	1	1
6	Blind therapists	0	0	0	0	0	0	0	0	0	1	0
7	Blind assessors	1	0	0	0	0	0	1	0	0	0	1
8	Adequate follow-up	1	1	1	1	1	1	0	1	1	1	1
9	Intention-to-treat analysis	0	0	1	1	1	1	0	1	0	0	0
10	Between-group comparisons	1	0	0	0	1	0	1	0	1	1	1
11	Point estimates and variability	1	1	1	1	1	0	1	1	1	1	1

	Total	6	2	4	4	5	3	5	4	3	7	7
466	<hr/>											
467		*Not included in the final score										

468 **Discussion**

469 To the best of our knowledge, this is the first systematic examination of BCI-driven robotic
470 systems specific for hand rehabilitation. Through undertaking this review we found several
471 limitations present from the studies identified and we examine these in more detail here and
472 provide recommendations for future work in this area.

473
474 To provide clarity on the state of the current development of BCI-hand robot systems, we
475 looked into the maturity of technology used in each study as determined by its readiness level
476 (TRL). All but one in the prototype group was rated as having TRL 3 while the clinical group
477 was more varied in their TRL (ranging from 5-7). The system used by Witkowski et al. [101],
478 a prototype study, was rated TRL 4 due to the study being performed on the basis of
479 improving and assessing its safety features. It is also worth noting that while a formal safety
480 assessment was not performed for the TRL 3 prototypes of Stan et al. [94], Randazzo et al.
481 [90] and Tacchino et al. [91], safety considerations and/or implementations were made; a
482 criterion to be satisfied before proceeding to TRL 4. The system used by Chowdhury et al. is
483 a good example of improving a TRL from 5 to 6 with a pilot clinical study published within
484 the same year [78,79]. The two systems used in the RCT studies by Ang et al. [75] and Frolov
485 et al. [80] achieved the highest score (TRL 7) among all of the studies which also meant that
486 no BCI-hand robot system for stroke rehabilitation has ever been registered and
487 commercially-released to date. This suggests that such systems lack the strong evidence that
488 would propel commercialisation and technology adoption.

489
490 Heterogeneity in the study designs was apparent in both the clinical and prototype groups.
491 The lack of control groups and random allocation in clinical studies (e.g., only 2 out of 7
492 studies are in the huge sample size RCT stage) made us unable to perform a meta-analysis of

493 effects and continue the study by Cervera et al [51] with a focus on BCI-hand robot
494 interventions. Results from the methodological quality assessment showed that only two
495 studies [83,84] had a score of 7 in the PEDro scale. Although non-conclusive, these results
496 support the notion that most of the studies are not aligned with the criteria of high-quality
497 evidence-based interventions.

498

499 Almost all the clinical studies (except for Carino-Escobar et al. [85] and Frolov et al. [80])
500 limited their recruitment to chronic stroke patients. The reason may be due to the highly
501 variable rates of recovery in patients at different stages in their disease [112]. Baseline
502 treatments were also not reported among the clinical studies. Instead, the BCI-robot
503 interventions were compared to control groups using standard arm therapy; an example of
504 this was done by Ang et al. [75]. The heterogeneity of experimental designs reported in this
505 review raises the need to develop clearly defined protocols when conducting BCI-hand robot
506 studies on stroke patients. Until new systems have been assessed on this standard, it will be
507 difficult to generate strong evidence supporting the effectiveness of BCI-robotic devices for
508 hand rehabilitation.

509

510 In the development of any BCI-robotic device there are several design and feature
511 considerations that need to be made to ensure that the systems are both fit for purpose and
512 acceptable to the end-user. These design considerations must go beyond the scope of
513 understanding the anatomy of the hand and the physiology of motor recovery in response to
514 therapy. Feedback from stroke patients should also be an essential part of this design process.
515 Among the extracted studies, we surveyed the extent of end-user involvement in the initial
516 stages of development (i.e., through consultations, interviews and therapy observations) and
517 we found that there were no explicit statements about these in the reports. We recommend, as

518 good practice, for future work in this area to report the type and degree of patient and/or
519 physician involvement in device development to allow reviewers and readers to more readily
520 gauge the potential usability of the system.

521

522 We were able to profile the BCI-hand robot systems regarding their technical specifications
523 and design features. In hardware terms, a BCI-hand robot system involves three major
524 components: (1) An EEG data acquisition system with several electrodes connected to a
525 signal amplifier; (2) A computer where raw EEG data is received then processed by filters
526 and classifiers and where most of the cues and feedback during training is presented via a
527 visual display; (3) a robotic hand rehabilitation system for providing the physical therapy
528 back to the user.

529

530 The majority of the studies (N=19) used a BCI solely based on EEG while the rest were
531 combined with other sensors: EEG with EMG [75,78,87,91,95–98], EEG with force sensors
532 [79] and an EEG-EMG-EOG hybrid system [89,101]. The purpose of this integration is mainly
533 to improve signal quality by accounting for artifact or to provide added modalities. Action
534 potentials such as those caused by ocular, muscular and facial movements interfere with
535 nearby electrodes and the presence of an added electrophysiological sensor accounting for
536 these would enable the technician to perform noise cancellation techniques as a first step in
537 signal processing.

538

539 The choice of EEG system as well as the type of electrodes provides a technical trade-off and
540 affects the session both in terms of subjective experiences (i.e., ease-of-use, preparation time,
541 cleaning, comfortability) and data performance. Due to the presence of a conducting
542 gel/solution, standard “wet” electrodes provide a degree of confidence in preventing signal

543 disruption within a short duration usually enough for a standard stroke therapy session.
544 However, this also makes the setup, use and cleaning in the experiment more challenging, non-
545 ambulatory and reliant on a specialised laboratory setup [10]. Conversely, dry electrodes offer
546 an accessible, user-friendly and portable alternative by using dry metal pins or coatings that
547 comb through hair and come in contact directly with the scalp. The signal fidelity of dry
548 electrodes is still a matter of debate in the BCI community. A systematic comparison between
549 dry passively-amplified and wet actively-amplified electrodes reported similar performance in
550 the detection of event-related potentials (ERP) [113]. However, for a study involving dry active
551 electrodes [114], high inter-electrode impedance resulted in increased single-trial and average
552 noise levels as compared to both active and passive wet electrodes. In classifying MI,
553 movement-related artifacts adversely affect active dry electrodes, but these can be addressed
554 through a hybrid system of other physiological sensors to separate sources [115].

555
556 Almost all of the studies included used a standard EEG system with “wet” electrodes (e.g.,
557 g.USBamp by g.tec and BrainAmp by Brain Products) while three used Emotiv EPOC+, a
558 semi-dry EEG system that uses sponge conductors infused with saline solution. While the use
559 of dry electrodes has been observed in pilot and prototype studies of BCI-hand robot systems
560 [67,64,93,102] and other motor imagery experiments [116–119], no dry EEG system was used
561 in the final 30 studies that tested healthy or stroke participants. It is expected that as dry EEG
562 systems continue to improve, their use in clinical studies of BCI will also become increasingly
563 prominent.

564
565 The degree of BCI-robotic control for the majority of the studies (N=26) was limited to
566 triggering the device to perform grasping (opening and closing of hand) and pinching (a
567 thumb-index finger pinch or a 3-point thumb-index-middle finger pinch) movements using

568 MI and other techniques. A triggered assistance strategy provides the minimum amount of
569 active participation from the patient in a BCI-robot setup [37]. The main advantages of this is
570 that it is easy to implement; requiring less computational complexity in signal processing.
571 However, a higher spatial or temporal volitional control over the therapeutic device increases
572 its functionality and can be used to develop more engaging tasks for the stroke therapy.
573 Among the studies, no robotic control setup was able to perform digit-specific MI which
574 corresponds to the spatial aspects of volitional control. This is a limitation caused by the non-
575 invasive setup of EEG and is due to the low spatial resolution brought by the distances
576 between electrodes [120]. The homunculus model, a representation of the human body in the
577 motor strip, maps the areas of the brain where activations have been reported to occur for
578 motor processes. The challenge of decoding each finger digit MI in one hand is that they only
579 tend to occupy a small area in this strip. Hence even the highest resolution electrode
580 placement system (i.e., the five percent or 10-5 system – up to 345 electrodes) would have
581 difficulties accounting for digit-specific MI for BCI. In contrast to EEG, electrocorticography
582 (ECoG) have been used to detect digit-specific MI. The electrodes of ECoG come in contact
583 directly with the motor cortex and is an invasive procedure; making it non-ideal for use in
584 BCI therapy [121].

585

586 It is worth noting however that some studies were successful in implementing continuous
587 control based on ERD/ERS patterns. A continuous control strategy increases the temporal
588 volitional control over the robot as opposed to triggered assistance where a threshold is
589 applied, and the robot finishes the movement for the participant. Bundy et al. [77] and
590 Norman et al. [82] were both able to apply continuous control of a 3-DOF pinch-grip
591 exoskeleton based on spectral power while Bauer et al. [97] provided ERD-dependent control
592 of finger extension for an end-effector robot. These continuous control strategies have been

593 shown to be very useful in BCI-hand robots for assistive applications (i.e., partial or full
594 device dependence for performing ADL tasks [122]). Whether this type of control can
595 significantly improve stroke recovery is still in question as the strategy of robots for stroke
596 rehabilitation can be more classified as a therapeutic “exercise” device.

597

598 Signal processing and machine learning play a vital role in the development of any EEG-
599 based BCI. The pre-processing techniques (e.g., filtering, artifact removal), types of features
600 computed from EEG, and the classifier used in machine learning can significantly affect the
601 performance of the robotic system in classifying the user’s intent via MI [123]. False
602 classification, especially during feedback, could be detrimental to the therapy regime as it
603 relates to the reward and punishment mechanisms that are important in motor relearning
604 [124]. For example, false negatives hinder the reward strategy that is essential to motivate the
605 patient while false positives would also reward the action with the wrong intent. In this
606 review, a critical appraisal of the signal processing techniques was done on each system to
607 recognise the best practices involved. The current list of studies has revealed that approaches
608 to develop MI-based EEG signal processing are highly diverse in nature, which makes it
609 difficult to compare across the systems and hinders the development of new BCI systems
610 informed by the strengths and weaknesses of existing state-of-the-art systems. The diversity
611 in the design process can be beneficial to develop complex MI EEG-based BCI systems to
612 achieve high efficiency and efficacy. However, such newly developed systems should be
613 open sourced and easily reproducible by the research community to provide valid
614 performance comparisons and drive forward the domain of robotic-assisted rehabilitation.

615

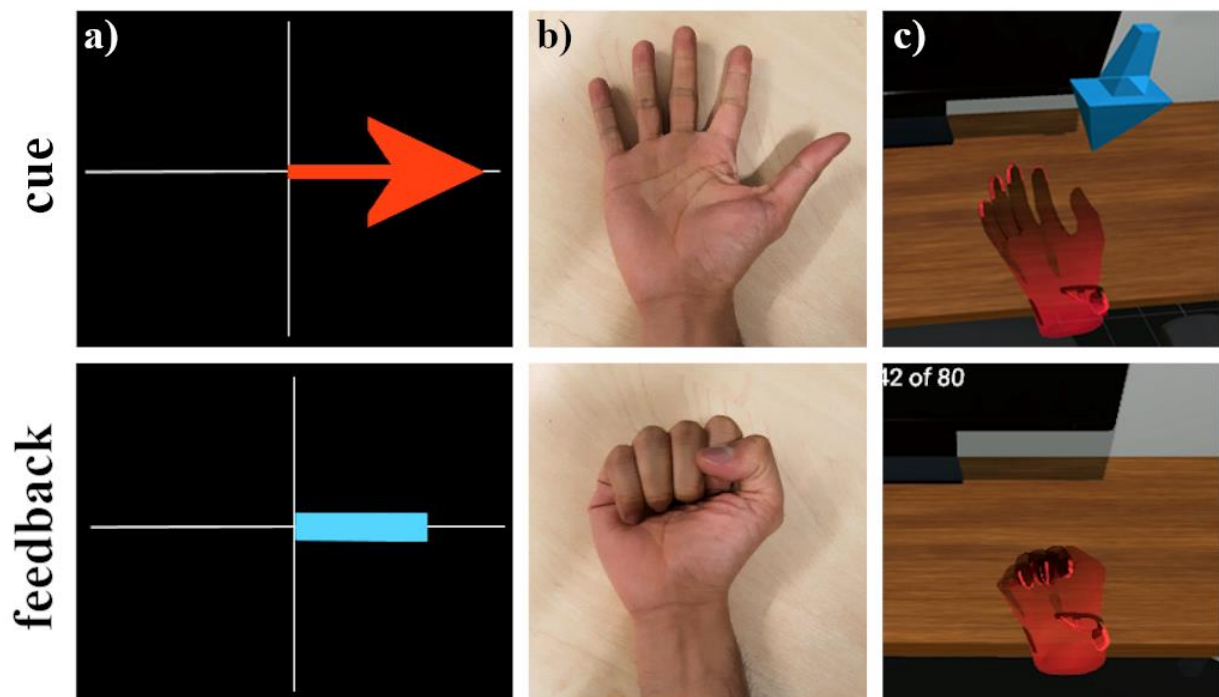
616 In addition to MI, other strategies for robotic control were reported. Diab et al. [103] and
617 King et al. [104] both facilitated the movements of their respective orthoses by physical

618 practice while Stan et al. [94] utilised a P-300 evoked potential speller BCI, where the user
619 visually focused on a single alphanumeric character situated in a grid. The chosen character
620 then corresponded to a command for the hand orthosis thereby producing the desired stimulus
621 for the patient. While the latter study reported 100% accuracy rate in terms of intention and
622 execution, the EEG channels were situated in the visual cortex rather than the motor strip
623 which deviates from the goal of activating the desired brain region for plasticity. This
624 highlights a broader issue on the intent behind a BCI-robotic system. Given that any potential
625 signal that can be reliably modulated by a patient can be used to trigger a robot, and that such
626 an approach would be antithetical to the goal of many MI-based systems, engineers may
627 consider how they can tailor their systems to ensure that the appropriate control strategy (and
628 corresponding neural networks) are implemented by a user (e.g. by taking a hybrid approach
629 that includes EMG and force sensors).

630

631 In order to facilitate hand MI and account for significant time-points in the EEG data, all the
632 studies employed a cue-feedback strategy during their trials. 19 of the studies presented a
633 form of visual cue while the rest, except for two unspecified [84,102], involved cues in
634 auditory (“bleep”) [91,95–98], textual [93,94,104] or verbal [103] forms. As for the provision
635 of a matching sensory feedback, 16 studies presented a combination of kinaesthetic and
636 visual feedback with some also providing auditory feedback during successful movement
637 attempts. All the studies provided kinaesthetic feedback through their robotic devices. Some
638 systems with visual feedback, such as Wang et al. [83], Li et al. [88], Chowdhury et al. in both
639 of their clinical studies [78,79] and Ono et al. in their clinical [81] and pilot testing
640 experiments [100], used a video of an actual hand performing the desired action. Ang et al.
641 [75] and Stan et al. [94], in a different strategy, provided visual feedback through photo
642 manipulation and textual display, respectively. While these two studies reported promising

643 results, it should also be considered that such cue and feedback types (including Graz
644 visualisations and auditory forms) are non-representative of hand movement and may not
645 provide the same stimuli as an anthropomorphic representation of a hand moving its desired
646 course. This may be essential when we base principles of stroke recovery in alignment with
647 how MI correlates with AO – an underlying theme of the motor simulation theory proposed
648 by Jeannerod [36]. Figure 4 shows how different kinds of visual cue and feedback can be
649 presented to participants to help facilitate MI.
650



651

652 **Figure 4. Visual cue and feedback during MI trials in different conditions. (a) Graz MI**
653 **visualisations, (b) video recordings of hand movement and (c) virtual hand**
654 **representation through VR/AR**

655 **Future Directions**

656 There is clearly great potential for the use of BCI-hand robots in the rehabilitation of an
657 affected hand following stroke. Nevertheless, it is important to emphasise that there is
658 currently insufficient evidence to support the use of such systems within clinical settings.
659 Moreover, the purported benefits of these systems rest on conjectures that require empirical
660 evidence. In other words, there are grounds for supposing that MI could be useful within
661 these rehabilitation settings but no supporting evidence. This systematic review has also
662 revealed that there are a number of technological limitations to existing BCI-hand robotic
663 systems. We stress an urgent need to address these limitations to ensure that the systems meet
664 the minimum required levels of product specification (in measuring brain activity, processing
665 signals, delivering forces to the hand and providing rich feedback and motivating settings).
666 We question the ethics or usefulness of conducting clinical trials with such systems until they
667 can demonstrate minimum levels of technological capability. We consider below what
668 standards these systems should obtain before subjecting them to a clinical trial and discuss
669 might constitute an acceptable standard for a clinical trial.

670

671 **Ideal Setup for a BCI-hand Robot**

672 We summarise the information revealed via the systematic review about what constitutes an
673 acceptable setup for a BCI-hand robot for stroke rehabilitation. We focus on improving
674 individual components in data acquisition, data processing, the hand rehabilitation robot, and
675 the visual cue and feedback environment. Table 6 presents the features and specifications of a
676 fully integrated acceptable system.

677 **Table 6. Exemplary Features and Specifications of Future BCI-Hand Robot Systems**

678

Component	Features and Specifications
Data Acquisition System and Software	<ul style="list-style-type: none"> • Dry EEG system with 8-16 channels, comfortable and easy to use • Inclusion of other bio-signal sensors such as EMG, EOG, force, accelerometers to remove artifacts and improve classification • Robust and reliable signal processing software: machine learning-based algorithms that discriminate brain states such as MI or evoked potentials with high classification accuracies ($\geq 95\%$) and lower calibration times
Hand Robot	<ul style="list-style-type: none"> • Safe, comfortable and aligned with the hand's range of motion • Effective in providing kinaesthetic feedback • Use of back-drivable or soft actuators that effectively assist movement without additional injury • Multiple levels of safety and emergency features (mechanical, electronic, software), clear and obvious operation
Visual Cue and Feedback	<ul style="list-style-type: none"> • Provide rich visual cue and feedback to intended tasks, geometric representation of the hand (video or simulated environment), can be in multiple platforms such as display monitors or VR/AR on a head-mounted device • Gamification of therapy exercises to provide an engaging regime to stroke patients

679

680

681 The implementation of these features in an ideal BCI-robot setup needs to be weighed against
682 socioeconomic factors in healthcare delivery for it to be considered market ready. An ideal
683 BCI system should primarily provide above chance-level classification after the first session
684 on the first day of therapy. Ideally, the classification algorithm should also translate and adapt
685 to following sessions or days; reducing the number of training sessions and focusing on the
686 main therapy tasks. An alternative approach is to focus on making the setup an engaging
687 experience. In other words, the delivery of intervention can be started immediately when the
688 patient wears the EEG cap and runs the BCI system. For the hand robot system, more

689 straightforward criteria can be followed with the existence of the numerous design protocols,
690 regulation standards and assessment matrices mentioned in this review. Nevertheless, end-
691 user involvement in the design with the prioritisation of safety while allowing the most
692 natural hand movement and ROM as possible is the recommended goal.

693

694 **Ideal Setup for Clinical Trials**

695 We also propose a set of specialised criteria for BCI-hand robot systems in addition to the
696 standard motor improvement scores (e.g. ARAT, FMA-UE) evaluated during clinical trials.
697 Firstly, classification accuracies between intended and interpreted actions from the data
698 acquisition and software component should always be accounted to track the effectiveness of
699 BCI in executing the clinical task. In addition to this, system calibration and training
700 procedures, especially its duration, should be detailed in the protocol to document the
701 reliability of the classification algorithm. There is not much to consider in the use of robotic
702 devices as they are most likely to be mature (if not yet commercially available) before being
703 used as the hardware component in the study. However, the devices' functionality (i.e., task
704 to be performed, degree of control and motion, actuation and power transmission etc.) should
705 always be stated as they contribute to the evaluation of interactions between other
706 components in the system. Lastly, controls for the clinical study must always be included,
707 even with small-scale patient studies. As discussed in this article, these controls may be in the
708 form of sham, standard arm therapy (SAT), standard robotic therapy, congruency feedback
709 and quality of stimuli among others. Having regarded and implemented these criteria would
710 help homogenise the clinical data for future meta-analyses, strengthen evidence-based results
711 and provide a reliable way of documentation for individual and/or interacting components.

712 **Proposed roadmap**

713 We suggest that the immediate focus for BCI-controlled robotic device research should be
714 around the engineering challenges. It is only when these challenges have been met that it is
715 useful and ethical to subject the systems to clinical trials. We recommend that the challenges
716 be broken down into the following elements: (1) data acquisition; (2) signal processing and
717 classification; (3) robotic device; (4) priming and feedback environment; (5) integration of
718 these four elements. The nature of these challenges means that a multidisciplinary approach is
719 required (e.g. the inclusion of psychologists, cognitive neuroscientists and physiologists to
720 drive the adoption of reliable neural data acquisition). It seems probable that progress will be
721 made by different laboratories tackling some or all of these elements and coordinating
722 information sharing and technology improvements. Once the challenges have been met (i.e.
723 there is a system that is able to take neural signals and use these to help drive a robotic
724 system capable of providing appropriate forces to the hand within a motivating environment)
725 then robust clinical trials can be conducted to ensure that the promise of this approach does
726 translate into solid empirical evidence supporting the use of these systems within clinical
727 settings.

728 **Declarations**

729 **Funding**

730 This work was supported by a Newton Fund PhD grant, ID 331486777, under the Newton-
731 Agham partnership. The grant is funded by the UK Department for Business, Energy and
732 Industrial Strategy and the Philippine Commission on Higher Education and delivered by the
733 British Council. For further information, please visit www.newtonfund.ac.uk. Authors F.M
734 and M.M-W were supported by Fellowships from the Alan Turing Institute and a Research
735 Grant from the EPSRC (EP/R031193/1).

736 **Availability of Data and Materials**

737 A full database of selected studies including those extracted during the search and selection
738 process is available from the corresponding author on reasonable request.

739

740 **Authors' Contributions**

741 PDEB and ECS performed the initial search and screening of the studies. MA performed the
742 analysis of signal processing techniques. AA, AEJ and RJH made contribution to the
743 robotics, design and other engineering aspects of the current work. FM provided analysis
744 related to EEG and BCI. MMW contributed to the clinical and overall direction of the review.
745 PDEB, FM and MMW were the major contributors to the writing of the manuscript. All
746 authors read and approved the final manuscript.

747

748 **Competing Interests**

749 The authors declare that they have no competing interests.

750

751 **Ethics Approval and Consent to Participate**

752 Not applicable.

753

754 **Consent for Publication**

755 Not applicable.

756

757 **Acknowledgements**

758 Not applicable.

759 **References**

- 760 1. McHugh G, Swain ID. A comparison between reported therapy staffing levels and the department
761 of health therapy staffing guidelines for stroke rehabilitation: a national survey. *BMC Health Services*
762 *Research*. 2014;14:216.
- 763 2. Ntsiea MV. Current stroke rehabilitation services and physiotherapy research in South Africa. *S Afr*
764 *J Physiother*. 2019;75:475–475.
- 765 3. Manguerra MV, Baniqued PDE, Abad AC, Baldovino RG, Dungao JR, Bugtai NT. Active motor
766 control for an upper extremity exoskeleton. *Advanced Science Letters*. 2018;24:9937–8840.
- 767 4. Wolpaw JR, Wolpaw EW. *Brain-Computer Interfaces, principles and practise*. Oxford University
768 Press USA; 2012.
- 769 5. Vidal JJ. Toward direct brain-computer communication. *Annual review of biophysics and*
770 *bioengineering*. 1973;2:157–80.
- 771 6. Berger H. Über das elektrenkephalogramm des menschen. *Archiv für Psychiatrie und*
772 *Nervenkrankheiten*. 1929;527–70.
- 773 7. Hochberg LR, Serruya MD, Friehs GM, Mukand JA, Saleh M, Caplan AH, et al. Neuronal
774 ensemble control of prosthetic devices by a human with tetraplegia. *Nature*. 2006;442:164.
- 775 8. Silvoni S, Ramos-Murguialday A, Cavinato M, Volpato C, Cisotto G, Turolla A, et al. Brain-
776 computer interface in stroke: a review of progress. *Clin EEG Neurosci*. 2011;42:245–52.
- 777 9. Birbaumer N, Ghanayim N, Hinterberger T, Iversen I, Kotchoubey B, Kubler A, et al. A spelling
778 device for the paralysed. *Nature*. 1999;398:297–8.
- 779 10. Graitmann B, Allison B, Pfurtscheller G. Brain–computer interfaces: a gentle introduction. In:
780 Graitmann B, Pfurtscheller G, Allison B, editors. *Brain-Computer Interfaces: Revolutionizing Human-*
781 *Computer Interaction [Internet]*. Berlin, Heidelberg: Springer Berlin Heidelberg; 2010. p. 1–27.
782 Available from: https://doi.org/10.1007/978-3-642-02091-9_1
- 783 11. Molteni F, Gasperini G, Cannaviello G, Guanzioli E. Exoskeleton and end-effector robots for
784 upper and lower limbs rehabilitation: narrative review. *PM&R*. 2018;10:S174–88.
- 785 12. European Commission. *Medical devices: guidance document - classification of medical devices*
786 *[Internet]*. United Kingdom Medicines and Healthcare products Regulation Agency; 2016 [cited 2018
787 Dec 10]. Available from: <http://ec.europa.eu/growth/sectors/medical-devices/guidance/>
- 788 13. Guiochet J, Hoang QAD, Kaaniche M, Powell DJ. Applying existing standards to a medical
789 rehabilitation robot: limits and challenges. *IROS*. 2012.
- 790 14. Yue Z, Zhang X, Wang J. Hand rehabilitation robotics on poststroke motor recovery. *Hindawi*
791 *Behavioural Neurology*. 2017;
- 792 15. Houwink A, Nijland RH, Geurts AC, Kwakkel G. Functional recovery of the paretic upper limb
793 after stroke: Who regains hand capacity? *Archives of physical medicine and rehabilitation*.
794 2013;94:839–44.
- 795 16. Takahashi K, Domen K, Sakamoto T, Toshima M, Otaka Y, Seto M, et al. Efficacy of upper
796 extremity robotic therapy in subacute poststroke hemiplegia: an exploratory randomized trial. *Stroke*.
797 2016;47:1385–8.

- 798 17. Fregni F, Pascual-Leone A. Hand motor recovery after stroke: tuning the orchestra to improve
799 hand motor function. *Cogn Behav Neurol*. 2006;19:21–33.
- 800 18. Hallett M. Plasticity of the human motor cortex and recovery from stroke. *Brain Res Brain Res*
801 *Rev*. 2001;36:169–74.
- 802 19. Zeiler SR, Krakauer JW. The interaction between training and plasticity in the poststroke brain.
803 *Curr Opin Neurol*. 2013;26:609–16.
- 804 20. Mawase F, Uehara S, Bastian AJ, Celnik P. Motor learning enhances use-dependent plasticity. *J*
805 *Neurosci*. 2017;37:2673–85.
- 806 21. Teplan M. Fundamentals of EEG measurement. *Measurement Science Review*. 2002;2.
- 807 22. Cohen MX. Analyzing neural time series data: theory and practice [Internet]. Cambridge; 2014.
808 Available from: <http://lib.ugent.be/catalog/rug01:002161004>
- 809 23. Li M, Xu G, Xie J, Chen C. A review: motor rehabilitation after stroke with control based on
810 human intent. *Proc Inst Mech Eng H*. 2018;232:344–60.
- 811 24. Pfurtscheller G, Lopes da Silva FH. Event-related EEG/MEG synchronization and
812 desynchronization: basic principles. *Clin Neurophysiol*. 1999;110:1842–57.
- 813 25. Jiang X, Bian GB, Tian Z. Removal of artifacts from EEG signals: a review. *Sensors*. 2019;19.
- 814 26. Mammone N, Morabito FC. Enhanced automatic wavelet independent component analysis for
815 electroencephalographic artifact removal. *Entropy*. 2014;16:6553–72.
- 816 27. Val-Calvo M, Alvarez-Sanchez JR, Ferrandez-Vicente JM, Fernandez E. Optimization of real-
817 time EEG artifact removal and emotion estimation for human-robot interaction applications. *Frontiers*
818 *in Computational Neuroscience*. 2019;
- 819 28. Kilicarslan A, Vidal JLC. Characterization and real-time removal of motion artifacts from EEG
820 signals. *Journal of Neural Engineering*. 2019;16.
- 821 29. Chang CY, Hsu SH, Pion-Tonachini L, Jung TP. Evaluation of artifact subspace reconstruction for
822 automatic artifact components removal in multi-channel EEG recordings. *IEEE Transactions on*
823 *Biomedical Engineering*. 2019;
- 824 30. Lotte F, Guan C. Regularizing common spatial patterns to improve BCI designs: unified theory
825 and new algorithms. *IEEE Transactions on Biomedical Engineering*. 2011;58:355–62.
- 826 31. Roy Y, Banville H, Albuquerque I, Gramfort A, Falk TH, Faubert J. Deep learning-based
827 electroencephalography analysis: a systematic review. *Journal of Neural Engineering*. 2019;16.
- 828 32. Schirrneister RB, Springenberg JT, Fiederer LDJ, Glasstetter M, Eggersperger K, Tangermann
829 M, et al. Deep learning with convolutional neural networks for EEG decoding and visualization.
830 *Human Brain Mapping*. 2017;38:5391–420.
- 831 33. Hardwick RM, Caspers S, Eickhoff SB, Swinnen SP. Neural correlates of action: comparing meta-
832 analyses of imagery, observation, and execution. *Neuroscience and Biobehavioral Reviews*. 2018;31–
833 44.
- 834 34. Xu L, Zhang H, Hui M, Long Z, Jin Z, Liu Y, et al. Motor execution and motor imagery: a
835 comparison of functional connectivity patterns based on graph theory. *Neuroscience*. 2014;261:184–
836 94.

- 837 35. Sharma N, Baron JC. Does motor imagery share neural networks with executed movement: a
838 multivariate fMRI analysis. *Front Hum Neurosci*. 2013;7:564–564.
- 839 36. Jeannerod M. Neural simulation of action: a unifying mechanism for motor cognition.
840 *NeuroImage*. 2001;14:S103–9.
- 841 37. Marchal-Crespo L, Reinkensmeyer DJ. Review of control strategies for robotic movement training
842 after neurologic injury. *Journal of NeuroEngineering and Rehabilitation*. 2009;6.
- 843 38. Brookes J, Mushtaq F, Jamieson E, Fath AJ, Bingham G, Culmer P, et al. Exploring disturbance
844 as a force for good in motor learning. *PLOS ONE*. 2020;15.
- 845 39. Mulder T. Motor imagery and action observation: cognitive tools for rehabilitation. *J Neural*
846 *Transm (Vienna)*. 2007;114:1265–78.
- 847 40. Vogt S, Di Rienzo F, Collet C, Collins A, Guillot A. Multiple roles of motor imagery during
848 action observation. *Frontiers in Human Neuroscience*. 2013;7:807.
- 849 41. Friesen CL, Bardouille T, Neyedli HF, Boe SG. Combined action observation and motor imagery
850 neurofeedback for modulation of brain activity. *Frontiers in Human Neuroscience*. 2017;10:692.
- 851 42. Eaves DL, Riach M, Holmes PS, Wright DJ. Motor imagery during action observation: a brief
852 review of evidence, theory and future research opportunities. *Frontiers in Neuroscience*. 2016;10:514.
- 853 43. Kim T, Frank C, Schack T. A systematic investigation of the effect of action observation training
854 and motor imagery training on the development of mental representation structure and skill
855 performance. *Frontiers in Human Neuroscience*. 2017;11:499.
- 856 44. Nakano H, Kodama T. Motor imagery and action observation as effective tools for physical
857 therapy. *Neurological Physical Therapy*. IntechOpen; 2017.
- 858 45. Laver KE, Lange B, George S, Deutsch JE, Saposnik G, Crotty M. Virtual reality for stroke
859 rehabilitation. *Cochrane Database Syst Rev*. 2017;11:CD008349–CD008349.
- 860 46. Brookes J, Warburton M, Alghadier M, Mon-Williams M, Mushtaq F. Studying human behavior
861 with virtual reality: the Unity experiment framework. *Behavior Research Methods [Internet]*. 2019;
862 Available from: <https://doi.org/10.3758/s13428-019-01242-0>
- 863 47. Vourvopoulos A, Cardona JEM, Badia SB i. Optimizing motor imagery neurofeedback through
864 the use of multimodal immersive virtual reality and motor priming. 2015 International Conference on
865 Virtual Rehabilitation (ICVR). 2015. p. 228–34.
- 866 48. Johnston M, Bonetti D, Joice S, Pollard B, Morrison V, Francis JJ, et al. Recovery from disability
867 after stroke as a target for a behavioural intervention: results of a randomized controlled trial.
868 *Disability and Rehabilitation*. 2007;29:1117–27.
- 869 49. Hülsmann F, Frank C, Senna I, Ernst MO, Schack T, Botsch M. Superimposed skilled
870 performance in a virtual mirror improves motor performance and cognitive representation of a full
871 body motor action. *Frontiers in Robotics and AI*. 2019;6:43.
- 872 50. Monge-Pereira E, Ibanez-Pereda J, Alguacil-Diego IM, Serrano JI, Spottorno-Rubio MP, Molina-
873 Rueda F. Use of electroencephalography brain-computer interface systems as a rehabilitative
874 approach for upper limb function after a stroke: a systematic review. *PM R*. 2017;9:918–32.

- 875 51. Cervera MA, Soekadar SR, Ushiba J, Millan J d. R, Liu M, Birbaumer N, et al. Brain-computer
876 interfaces for post-stroke motor rehabilitation: a meta-analysis. bioRxiv [Internet]. 2017; Available
877 from: <http://biorxiv.org/content/early/2017/11/24/224618.abstract>
- 878 52. McConnell AC, Muioli RC, Brasil FL, Vallejo M, Corne DW, Vargas PA, et al. Robotic devices
879 and brain-machine interfaces for hand rehabilitation post-stroke. *Journal of Rehabilitation Medicine*.
880 2017;49:449–60.
- 881 53. Fugl-Meyer AR, Jaasko L, Leyman I, Olsson S, Steglind S. The post-stroke hemiplegic patient. 1.
882 a method for evaluation of physical performance. *Scand J Rehabil Med*. 1975;7:13–31.
- 883 54. Lyle RC. A performance test for assessment of upper limb function in physical rehabilitation
884 treatment and research. *International Journal of Rehabilitation Research* [Internet]. 1981;4. Available
885 from:
886 [https://journals.lww.com/intjrehabilres/Fulltext/1981/12000/A_performance_test_for_assessment_of_](https://journals.lww.com/intjrehabilres/Fulltext/1981/12000/A_performance_test_for_assessment_of_upper_limb.1.aspx)
887 [upper_limb.1.aspx](https://journals.lww.com/intjrehabilres/Fulltext/1981/12000/A_performance_test_for_assessment_of_upper_limb.1.aspx)
- 888 55. Matthews WB. Aids to the examination of the peripheral nervous system. *Journal of the*
889 *Neurological Sciences*. 1977;33:299.
- 890 56. Office of the Director of Defense Research and Engineering Washington DC. Technology
891 Readiness Assessment (TRA) deskbook [Internet]. Fort Belvoir, VA, USA: Defense Technical
892 Information Center; 2009 Jul. Report No.: ADA524200. Available from:
893 <https://apps.dtic.mil/dtic/tr/fulltext/u2/a524200.pdf>
- 894 57. Maher CG, Sherrington C, Herbert RD, Moseley AM, Elkins M. Reliability of the PEDro scale for
895 rating quality of randomized controlled trials. *Physical Therapy*. 2003;83:713–21.
- 896 58. PEDro Scale [Internet]. 1999 [cited 2018 Nov 30]. Available from:
897 www.pedro.org.au/english/downloads/pedro-scale/
- 898 59. Belardinelli P, Laer L, Ortiz E, Braun C, Gharabaghi A. Plasticity of premotor cortico-muscular
899 coherence in severely impaired stroke patients with hand paralysis. *Neuroimage Clin*. 2017;14:726–
900 33.
- 901 60. Bergamasco M, Frisoli A, Fontana M, Loconsole C, Leonardis D, Troncossi M, et al. Preliminary
902 results of BRAVO project: brain computer interfaces for robotic enhanced action in visuo-motor
903 tasks. *IEEE Int Conf Rehabil Robot*. 2011;2011:5975377.
- 904 61. Broetz D, Braun C, Weber C, Soekadar SR, Caria A, Birbaumer N. Combination of brain-
905 computer interface training and goal-directed physical therapy in chronic stroke: a case report.
906 *Neurorehabil Neural Repair*. 2010;24:674–9.
- 907 62. Cincotti F, Pichiorri F, Arico P, Aloise F, Leotta F, de Vico Fallani F, et al. EEG-based brain-
908 computer interface to support post-stroke motor rehabilitation of the upper limb. *Conf Proc IEEE Eng*
909 *Med Biol Soc*. 2012;2012:4112–5.
- 910 63. George K, Iniguez A, Donze H, Kizhakkumthala S. Design, implementation and evaluation of a
911 brain-computer interface controlled mechanical arm for rehabilitation. 2014 IEEE International
912 Instrumentation and Measurement Technology Conference (I2MTC) Proceedings. 2014. p. 1326–8.
- 913 64. Ushiba J, Morishita A, Maeda T. A task-oriented brain-computer interface rehabilitation system
914 for patients with stroke hemiplegia. 2014 4th International Conference on Wireless Communications,
915 Vehicular Technology, Information Theory and Aerospace & Electronic Systems (VITAE). 2014. p.
916 1–3.

- 917 65. Rathee D, Chowdhury A, Meena YK, Dutta A, McDonough S, Prasad G. Brain-machine
918 interface-driven post-stroke upper-limb functional recovery correlates with beta-band mediated
919 cortical networks. *IEEE Transactions on Neural Systems and Rehabilitation Engineering*.
920 2019;27:1020–31.
- 921 66. Naros G, Gharabaghi A. Physiological and behavioral effects of beta-tACS on brain self-
922 regulation in chronic stroke. *Brain Stimul*. 2017;10:251–9.
- 923 67. Norman S. Brain computer interface design for robot assisted neurorehabilitation [Internet].
924 University of California, Irvine; 2017. Available from: <https://escholarship.org/uc/item/4v18v0d3>
- 925 68. Pellegrino G, Tomasevic L, Tombini M, Assenza G, Bravi M, Sterzi S, et al. Inter-hemispheric
926 coupling changes associate with motor improvements after robotic stroke rehabilitation. *Restor*
927 *Neurol Neurosci*. 2012;30:497–510.
- 928 69. Bousseta R, El Ouakouak I, Gharbi M, Regragui F. EEG based brain computer interface for
929 controlling a robot arm movement through thought. *IRBM*. 2018;39:129–35.
- 930 70. Formaggio E, Storti SF, Boscolo Galazzo I, Gandolfi M, Geroi C, Smania N, et al. Modulation of
931 event-related desynchronization in robot-assisted hand performance: brain oscillatory changes in
932 active, passive and imagined movements. *J Neuroeng Rehabil*. 2013;10:24.
- 933 71. Sarasola-Sanz A, Irastorza-Landa N, Lopez-Larraz E, Bibian C, Helmhold F, Broetz D, et al. A
934 hybrid brain-machine interface based on EEG and EMG activity for the motor rehabilitation of stroke
935 patients. *IEEE Int Conf Rehabil Robot*. 2017;2017:895–900.
- 936 72. Shiman F, Irastorza-Landa N, Sarasola-Sanz A, Spuler M, Birbaumer N, Ramos-Murguialday A.
937 Towards decoding of functional movements from the same limb using EEG. *Conf Proc IEEE Eng*
938 *Med Biol Soc*. 2015;2015:1922–5.
- 939 73. Muralidharan A, Chae J, Taylor DM. Extracting attempted hand movements from EEGs in people
940 with complete hand paralysis following stroke. *Front Neurosci*. 2011;5:39.
- 941 74. Ono T, Mukaino M, Ushiba J. Functional recovery in upper limb function in stroke survivors by
942 using brain-computer interface: a single case A-B-A-B design. *Conf Proc IEEE Eng Med Biol Soc*.
943 2013;2013:265–8.
- 944 75. Ang KK, Guan C, Phua KS, Wang C, Zhou L, Tang KY, et al. Brain-computer interface-based
945 robotic end effector system for wrist and hand rehabilitation: results of a three-armed randomized
946 controlled trial for chronic stroke. *Frontiers in Neuroengineering*. 2014;7:30–30.
- 947 76. Barsotti M, Leonardis D, Loconsole C, Solazzi M, Sotgiu E, Procopio C, et al. A full upper limb
948 robotic exoskeleton for reaching and grasping rehabilitation triggered by MI-BCI. 2015 *IEEE*
949 *International Conference on Rehabilitation Robotics (ICORR)*. 2015. p. 49–54.
- 950 77. Bundy DT, Souders L, Baranyai K, Leonard L, Schalk G, Coker R, et al. Contralesional brain-
951 computer interface control of a powered exoskeleton for motor recovery in chronic stroke survivors.
952 *Stroke*. 2017;48:1908–15.
- 953 78. Chowdhury A, Raza H, Meena YK, Dutta A, Prasad G. Online covariate shift detection based
954 adaptive brain-computer interface to trigger hand exoskeleton feedback for neuro-rehabilitation. *IEEE*
955 *Transactions on Cognitive and Developmental Systems*. 2018;1–1.

- 956 79. Chowdhury A, Meena YK, Raza H, Bhushan B, Uttam AK, Pandey N, et al. Active physical
957 practice followed by mental practice using BCI-driven hand exoskeleton: a pilot trial for clinical
958 effectiveness and usability. *IEEE J Biomed Health Inform.* 2018;22:1786–95.
- 959 80. Frolov AA, Mokienko O, Lyukmanov R, Biryukova E, Kotov S, Turbina L, et al. Post-stroke
960 rehabilitation training with a motor-imagery-based brain-computer interface (BCI)-controlled hand
961 exoskeleton: a randomized controlled multicenter trial. *Frontiers in Neuroscience.* 2017;11:400–400.
- 962 81. Ono Y, Tominaga T, Murata T. Digital mirror box: an interactive hand-motor BMI rehabilitation
963 tool for stroke patients. 2016 Asia-Pacific Signal and Information Processing Association Annual
964 Summit and Conference (APSIPA). 2016. p. 1–7.
- 965 82. Norman SL, McFarland DJ, Miner A, Cramer SC, Wolbrecht ET, Wolpaw JR, et al. Controlling
966 pre-movement sensorimotor rhythm can improve finger extension after stroke. *Journal of Neural
967 Engineering.* 2018;15:056026.
- 968 83. Wang X, Wong W, Sun R, Chu WC, Tong KY. Differentiated effects of robot hand training with
969 and without neural guidance on neuroplasticity patterns in chronic stroke. *Frontiers in Neurology.*
970 2018;9:810.
- 971 84. Tsuchimoto S, Shindo K, Hotta F, Hanakawa T, Liu M, Ushiba J. Sensorimotor connectivity after
972 motor exercise with neurofeedback in post-stroke patients with hemiplegia. *Neuroscience.*
973 2019;416:109–25.
- 974 85. Carino-Escobar RI, Carillo-Mora P, Valdes-Cristerna R, Rodriguez-Barragan MA, Hernandez-
975 Arenas C, Quinzaños-Fresnedo J, et al. Longitudinal analysis of stroke patient’ brain rhythms during
976 an interview with a brain-computer interface. *Neural Plasticity.* 2019;2019:11.
- 977 86. Cantillo-Negrete J, Carino-Escobar RI, Elias-Vinas D, Gutierrez-Martinez J. Control signal for a
978 mechatronic hand orthosis aimed for neurorehabilitation. 2015 Pan American Health Care Exchanges
979 (PAHCE). 2015. p. 1–4.
- 980 87. Chowdhury A, Raza H, Dutta A, Nishad SS, Saxena A, Prasad G. A study on cortico-muscular
981 coupling in finger motions for exoskeleton assisted neuro-rehabilitation. *Conf Proc IEEE Eng Med
982 Biol Soc.* 2015;2015:4610–4.
- 983 88. Li M, He B, Liang Z, Zhao CG, Chen J, Zhuo Y, et al. An attention-controlled hand exoskeleton
984 for the rehabilitation of finger extension and flexion using a rigid-soft combined mechanism. *Frontiers
985 in Neurorobotics.* 2019;13:34.
- 986 89. Zhang J, Wang B, Zhang C, Xiao Y, Wang MY. An EEG/EMG/EOG-based multimodal human-
987 machine interface to real-time control of a soft robot hand. *Frontiers in Neurorobotics.* 2019;13:7.
- 988 90. Randazzo L, Iturrate I, Perdakis S, Millán J d. R. mano: a wearable hand exoskeleton for activities
989 of daily living and neurorehabilitation. *IEEE Robotics and Automation Letters.* 2018;3:500–7.
- 990 91. Tacchino G, Gandolla M, Coelli S, Barbieri R, Pedrocchi A, Bianchi AM. EEG analysis during
991 active and assisted repetitive movements: evidence for differences in neural engagement. *IEEE Trans
992 Neural Syst Rehabil Eng.* 2017;25:761–71.
- 993 92. Coffey AL, Leamy DJ, Ward TE. A novel BCI-controlled pneumatic glove system for home-
994 based neurorehabilitation. *Conf Proc IEEE Eng Med Biol Soc.* 2014;2014:3622–5.

- 995 93. Holmes CD, Wronkiewicz M, Somers T, Liu J, Russell E, Kim D, et al. IpsiHand Bravo: an
996 improved EEG-based brain-computer interface for hand motor control rehabilitation. *Conf Proc IEEE*
997 *Eng Med Biol Soc.* 2012;2012:1749–52.
- 998 94. Stan A, Irimia DC, Botezatu NA, Lupu RG. Controlling a hand orthosis by means of P300-based
999 brain computer interface. *2015 E-Health and Bioengineering Conference (EHB).* 2015. p. 1–4.
- 1000 95. Ramos-Murguialday A, Schürholz M, Caggiano V, Wildgruber M, Caria A, Hammer EM, et al.
1001 Proprioceptive feedback and brain computer interface (BCI) based neuroprostheses. *PLOS ONE.*
1002 2012;7:e47048.
- 1003 96. Ramos-Murguialday A, Birbaumer N. Brain oscillatory signatures of motor tasks. *J Neurophysiol.*
1004 2015;113:3663–82.
- 1005 97. Bauer R, Fels M, Vukelic M, Ziemann U, Gharabaghi A. Bridging the gap between motor
1006 imagery and motor execution with a brain-robot interface. *Neuroimage.* 2015;108:319–27.
- 1007 98. Naros G, Naros I, Grimm F, Ziemann U, Gharabaghi A. Reinforcement learning of self-regulated
1008 sensorimotor beta-oscillations improves motor performance. *Neuroimage.* 2016;134:142–52.
- 1009 99. Vukelic M, Gharabaghi A. Oscillatory entrainment of the motor cortical network during motor
1010 imagery is modulated by the feedback modality. *Neuroimage.* 2015;111:1–11.
- 1011 100. Ono Y, Wada K, Kurata M, Seki N. Enhancement of motor-imagery ability via combined action
1012 observation and motor-imagery training with proprioceptive neurofeedback. *Neuropsychologia.*
1013 2018;114:134–42.
- 1014 101. Witkowski M, Cortese M, Cempini M, Mellinger J, Vitiello N, Soekadar S. Enhancing brain-
1015 machine interface (BMI) control of a hand exoskeleton using electrooculography (EOG). *Journal of*
1016 *NeuroEngineering and Rehabilitation.* 2014;11:165.
- 1017 102. Fok S, Schwartz R, Wronkiewicz M, Holmes C, Zhang J, Somers T, et al. An EEG-based brain
1018 computer interface for rehabilitation and restoration of hand control following stroke using ipsilateral
1019 cortical physiology. *Conf Proc IEEE Eng Med Biol Soc.* 2011;2011:6277–80.
- 1020 103. Diab MS, Hussain Z, Mahmoud S. Restoring function in paralyzed limbs using EEG. *2016 IEEE*
1021 *59th International Midwest Symposium on Circuits and Systems (MWSCAS).* 2016. p. 1–4.
- 1022 104. King CE, Wang PT, Mizuta M, Reinkensmeyer DJ, Do AH, Moromugi S, et al. Noninvasive
1023 brain-computer interface driven hand orthosis. *Conf Proc IEEE Eng Med Biol Soc.* 2011;2011:5786–
1024 9.
- 1025 105. Ang KK, Chin ZY, Wang C, Guan C, Zhang H. Filter bank common spatial pattern algorithm on
1026 BCI competition IV datasets 2a and 2b. *Frontiers in neuroscience.* 2012;6:39–39.
- 1027 106. Bobrov PD, Korshakov AV, Roshchin VI, Frolov AA. Bayesian classifier for brain-computer
1028 interface based on mental representation of movements. *Zh Vyssh Nerv Deiat Im I P Pavlova.*
1029 2012;62:89–99.
- 1030 107. Gonzalez CDV, Azuela JHS, Espino ER, Ponce VH. Classification of motor imagery imagery
1031 EEG signals with CSP filtering through neural networks models. *Advances in Soft Computing,*
1032 *Lecture Notes in Computer Science.* Springer, Cham; 2018. p. 123–35.
- 1033 108. Chaudhari R, Galiyawala HJ. A review on motor imagery signal classification for BCI. *Signal*
1034 *Processing: An International Journal.* 2017;11:16–34.

- 1035 109. Oña ED, Cano-de la Cuerda R, Sanchez-Herrera P, Balaguer C, Jardon A. A review of robotics
1036 in neurorehabilitation: towards an automated process for upper limb. *J Healthc Eng.* 2018;
- 1037 110. Kersten P. Principles of physiotherapy assessment and outcome measures. *Physical Management*
1038 *in Neurological Rehabilitation.* 2004. p. 29–46.
- 1039 111. Dovat L, Lamercy O, Ruffieux Y, Chapuis D, Gassert R, Bleuler H, et al. A haptic knob for
1040 rehabilitation after stroke. 2006 IEEE/RSJ International Conference on Intelligent Robots and
1041 Systems. Beijing, China: IEEE; 2006.
- 1042 112. Ballester BR, Maier M, Duff A, Cameirao M, Bermudez S, Duarte E, et al. A critical time
1043 window for recovery extends beyond one-year post-stroke. *Journal of Neurophysiology.* 2019;350–7.
- 1044 113. Kam JWY, Griffin S, Shen A, Patel S, Hinrichs H, Heinze HJ, et al. Systematic comparison
1045 between a wireless EEG system with dry electrodes and a wired EEG system with wet electrodes.
1046 *NeuroImage.* 2019;184:119–29.
- 1047 114. Mathewson KE, Harrison TJJ, Kizuk SAD. High and dry? Comparing active dry EEG electrodes
1048 to active and passive wet electrodes. *Psychophysiology.* 2017;54:74–82.
- 1049 115. Saab J, Battes B, Grosse-Wentrup M. Simultaneous EEG recordings with dry and wet electrodes
1050 in motor-imagery. In proceedings. Graz, Austria; 2011.
- 1051 116. Abdalsalam E, Yusoff MZ, Kamel N, Malik AS, Mahmoud D. Classification of four class motor
1052 imagery for brain computer interface. In: Ibrahim H, Iqbal S, Teoh SS, Mustaffa MT, editors. 9th
1053 International Conference on Robotic, Vision, Signal Processing and Power Applications. Springer
1054 Singapore; 2017. p. 297–305.
- 1055 117. Grummett TS, Leibbrandt RE, Lewis TW, De Los Angeles D, Powers DMW, Willoughby JO, et
1056 al. Measurement of neural signals from inexpensive, wireless and dry EEG systems. *Physiological*
1057 *Measurement.* 2015;36.
- 1058 118. Mladenov T, Kim K, Nooshabadi S. Accurate motor imagery based dry electrode brain-computer
1059 interface system for consumer applications. 2012 IEEE 16th International Symposium on Consumer
1060 Electronics. 2012. p. 1–4.
- 1061 119. Guger C, Krausz G, Edliner G. Brain-computer interface control with dry EEG electrodes.
1062 *Proceedings of the 5th International Brain-Computer Interface Conference.* 2011. p. 316–9.
- 1063 120. Srinivasan R. Methods to improve the spatial resolution of EEG. *International Journal of*
1064 *Bioelectromagnetism.* 1999;1:102–11.
- 1065 121. Liao K, Xiao R, Gonzalez J, Ding L. Decoding individual finger movements from one hand
1066 using human EEG signals. *PLOS ONE.* 2014;9:e85192.
- 1067 122. Johnson MJ, Micera S, Shibata T, Guglielmelli E. Rehabilitation and assistive robotics [TC
1068 Spotlight]. *IEEE Robotics & Automation Magazine.* 2008;15:16–110.
- 1069 123. Arvaneh M, Guan C, Ang K, Quek C. Optimizing the channel selection and classification
1070 accuracy in EEG-based BCI. *Biomedical Engineering, IEEE Transactions on.* 2011;58:1865–73.
- 1071 124. Quattrocchi G, Greenwood R, Rothwell JC, Galea JM, Bestmann S. Reward and punishment
1072 enhance motor adaptation in stroke. *Journal of Neurology, Neurosurgery, and Psychiatry.*
1073 2016;88:730–6.

1074

Table 2. Summary of Studies

Authors	Participants	Study Design	Task Design	BCI-Hand Robot	Main Outcomes
Studies involving stroke patients					
Ang et al., 2014 [75]	N=27 (7F:14M) Moderate to severe impairment of UE function Mean age: 54.2y Mean stroke duration: 385.1 days	3-armed RCT of motor function with MI-BCI-device as intervention Control groups: device only (Haptic Knob), SAT	Photo manipulation: hand opening and closing, pronation and supination Cue: visual (photo) Feedback: visual (photo) and kinaesthetic	EEG: 27 channels to classify ERD/ERS and coupled with EMG to confirm MI Device: Haptic Knob, 2-DOF for hand grasping and knob manipulation Actuation: DC brushed motors with linear belt drive Control: trigger	Clinical outcome measure: FMMA Distal, improvement in weeks 3, 6, 12, 24 BCI-device group = 2.5±2.4, 3.3±2.3, 3.2±2.7, 4.2±3.1 Device only group = 1.6±2.5, 2.9±3.0, 2.5±2.6, 2.5±3.0 SAT group = 0.4±1.1, 1.9±1.9, 1.0±1.3, 0.3±2.1
Barsotti et al., 2015 [76]	N=3 (1F:2M) Chronic stroke survivors with right arm hemiparesis Mean age: 62±12y	Probing MI classification by BCI training, time-frequency analysis and robot trajectories Uncontrolled	Reaching-grasping-releasing Cue: visual Feedback: kinaesthetic Minimum time required to perform MI = 2s	EEG: 13 channels to classify ERD Device: BRAVO 2-DOF hand orthosis attached to full UE exoskeleton Actuation: DC motors with rigid links Control: trigger	Mean classification accuracy during BCI training = 82.51±2.04% Average delay from visual cue to robot initiation = 3.45±1.6s Average delay due to patient's ability to start MI = 1.45s
Bundy et al., 2017 [77]	N=10 Chronic hemiparetic stroke with moderate to severe UE hemiparesis Mean age: 58.6±10.3y	Motor function evaluation before and after intervention by MI-BCI from unaffected hemisphere	Opening of affected hand Cue: visual Feedback: visual and kinaesthetic	EEG: 8 channels to classify ERD Device: 3-pinch grip, 1-DOF hand exoskeleton	Clinical outcome measure: ARAT Score, improvement from baseline to completion (12 weeks) Mean ± SD = 6.20±3.81

Bundy et al. (cont'd)		Uncontrolled		Control: continuous depending on spectral power	Note: 5.7 ARAT Score is the minimal clinically important difference in chronic stroke survivors
Carino-Escobar et al. 2019 [85]	N=9 (4F:5M) Subacute ischaemic stroke Mean age: 59.9±2.8y Mean stroke duration: 158(±74)-185(±73) days	Determine longitudinal ERD/ERS patters and functional recovery with BCI-robot Uncontrolled	Extension-flexion of hand fingers Cue: visual (Graz MI) Feedback: visual and kinaesthetic	EEG: 11 channels to classify ERD/ERS Device: hand finger orthosis Actuation: DC motor with screw system for linear displacement, flexible links Control: trigger	FMA-UE: N=3 reported equal or higher than 3 score gains, N=3 no score gains, Mean longitudinal ERD/ERS: beta bands have higher association with time since stroke onset than alpha, and strong association with UL motor recovery
Chowdhury et al., 2018-b [78]	N=20 10 healthy and 10 hemiplegic stroke patients Mean age (healthy, stroke): 41±9.21y, 47.5±14.23y	Probe non-adaptive classifier (NAC) vs. Covariate Shift adaptive classifier (CSAC) of MI in EEG Control group: healthy participants	Extension-flexion of hand fingers Cue: visual Feedback: visual and kinaesthetic	EEG: 12 channels with EMG to classify ERD/ERS Device: EMOHEX 3-finger, 3-DOF each, exoskeleton (thumb, index, middle) Actuation: servomotors with rigid links Control: trigger	Mean classification accuracies during BCI training: Healthy group: calibration = 78.50±9.01%, NAC = 75.25±5.46%, CSAC = 81.50±4.89% Patient group: calibration = 79.63±13.11%, NAC = 70.25±3.43%, CSAC = 75.75±3.92%
Chowdhury et al., 2018-c [79]	N=4 (2F:2M) Chronic hemiplegic stroke patients, right-handed, left hand impaired Mean age: 44.75±15.69y Mean stroke duration: 7 ±1.15mo	Motor function evaluation by using active physical practice followed by MI-BCI-controlled device intervention Uncontrolled	Extension-flexion of hand fingers Cue: visual Feedback: visual and kinaesthetic	EEG: 12 channels with force sensors to classify ERD/ERS Device: EMOHEX 3-finger, 3-DOF each, exoskeleton (thumb, index, middle) Actuation: servomotors with rigid links Control: trigger	Classification accuracies of 4 participants: P01 = 81.45±8.12%, P02 = 70.21±4.43%, P03 = 76.88±4.49%, P04 = 74.55±4.35% Clinical outcome measures: GS and ARAT Scores, improvement from baseline to completion (6 weeks) GS scores: group mean difference = +6.38 kg, p=0.06

Chowdhury et al., 2018-c (cont'd)					ARAT scores: group mean difference = +5.66, p<0.05
Frolov et al., 2017 [80]	N=74 (26F:48M) BCI 55: Control 19 Subacute or chronic stroke with mild to hemiplegic hand paresis, right-handed	Multi-centre RCT of MI-BCI-controlled hand exoskeleton Control group: SHAM	3 Tasks: (1) motor relaxation, (2) imagery of left-hand opening, (3) imagery of right-hand opening Cue: visual Feedback: visual and kinaesthetic	EEG: 30 channels to classify the three mental tasks by Bayesian classifier based on covariance matrices Device: hand exoskeleton by Neurobotics, Russia Actuation: pneumatic motors with spring flexors Control: trigger	Mean classification accuracy during BCI training = 40.6% Clinical outcome measures: FMMA Distal and ARAT Scores, improvement in 10 days of training FMMA Distal = 2.0, p<0.01 (BCI) and 1.0, p=0.046 (control) ARAT Grasp = 3.0, p<0.01 (BCI) and 1.0, p=0.0394 (control) ARAT Grip = 1.0, p<0.01 (BCI) and 1.0, p=0.045 (control) ARAT Pinch = 1.0, p<0.01 (BCI) and 0.0, p=0.675 (control)
Norman et al., 2018 [82]	N=8 (All male) Chronic cortical and subcortical single haemorrhagic or ischaemic stroke (at least 6 months) Mean age: 59.5±11.8y	Implementation of sensorimotor rhythm (SMR) control on robot-assistive movement Uncontrolled	Extension of hand finger Cue: visual Feedback: visual and kinaesthetic	EEG: 16 channels mapping SMR changes Device: FINGER robot Actuation: Linear servo-tube actuator with rigid links Control: Visual - continuous (colour change respective to SMR), Robot - trigger	Mean classification accuracies: 8 participants: 83.1%, 76.3%, 73.3%, 68.2%, 74.5%, 86.5%, 47.9%, 40.0% Box and blocks test (BBT): At screening: mean score = 14.3±10.0, mean change after therapy = 4.3±4.5 (range 0-12). Higher score changes in participants who demonstrated SMR control but not significant (p=0.199)
Ono et al., 2016-a [81]	N=21 (9F:12M) Chronic stroke patients with hemiplegic hands Mean age: 57.9±2.4y	Probe congruent vs. incongruent MI feedback strategies Control groups: congruent (synchronous proprioceptive and visual feedback) and	Grasping of a tennis ball with a hand Cue: visual (video of hand performing action) Feedback: visual and kinaesthetic	EEG: 9 channels to classify ERD Device: Power Assist Hand - Team ATOM, Atsugi, Japan	Mean classification accuracies: Congruent feedback = 56.8±5.2%, chance level=36.4±4.5% Incongruent feedback = 40.0±3.5%, chance level 35.4±4.5%

Ono et al., 2016-a (cont'd)		incongruent (proprioceptive feedback given 1s after visual)		Actuation: pneumatic motors with rigid links Control: trigger	
Tsuchimoto et al., 2019 [84]	N=18 (3F:14M) Chronic haemorrhagic or ischaemic stroke (from 2mo onwards) Mean age: 58±10y	Implementation of MI-controlled robotic orthosis as neurofeedback Control: SHAM	Extension of hand finger Cue: unspecified Feedback: kinaesthetic and electrical stimulation	EEG: 5 channels to classify MI Device: robotic finger orthosis Actuation: servo motors with rigid links Control: trigger	Significant time-intervention interaction in the ipsilesional sensorimotor cortex. Higher coactivation of sensory and motor cortices for neurofeedback group in the ipsilesional sensorimotor cortices as compared to SHAM
Wang et al., 2018 [83]	N=24 (4F:20M) Chronic stroke patients with paralysed hands Mean age: 54±9y	Implementation of action observation and motor imagery (AO+MI) with kinaesthetic feedback Control: SHAM	Hand grasping Cue: visual (video of hand action / textual cues in SHAM group) Feedback: visual and kinaesthetic	EEG: 16 channels to classify ERD Device: robot hand Control: Trigger	AO+MI with kinaesthetic feedback group showed significant improvements in FMA-UE across longitudinal evaluation [$\chi^2(2) = 7.659, p = 0.022$], no significant difference in SHAM group [$\chi^2(2) = 4.537, p = 0.103$]

Authors	Participants	Study Design	Task Design	BCI-Hand Robot	Main Outcomes
Studies involving healthy participants					
Bauer et al., 2015 [97]	N=20 (11F:9M) Right-handed Mean age: 28.5±10.5y	Study on MI as compared to motor execution (ME) using BCI-device	Opening of left hand Cue: auditory Feedback: kinaesthetic	EEG: 31 channels to detect ERD, with EMG to classify MI from execution and account for tonic contraction Device: Amadeo, Tyromotion, Austria Control: discontinuation of ERD stops finger extension	Principal component analyses (between MI and execution) generated coefficients for the visual (VIS) and kinaesthetic (KIS) imagery scale, BCI-robot performance (BRI), tonic contraction task (MOC) and visuomotor integration task (VMI). VIS and KIS yielded high coefficients on MI while MOC and VMI yield high coefficients on ME. BRI show high coefficient yields on both MI and ME.

Cantillo-Negrete et al., 2015 [86]	N=1	Design and implementation of a MI-controlled hand orthosis	Extension-flexion of right-hand finger Cue: visual (modified Graz) Feedback: kinaesthetic	EEG: 11 channels to detect MI Device: 1-DOF hand finger orthosis Actuation: DC motor with screw system for linear displacement, flexible links Control: trigger	Classification accuracy = 78%
Chowdhury et al., 2015-a [87]	N=6 Age range: 20-30y	Study of cortico-muscular coupling in robotic finger exoskeleton control	Extension-flexion of hand fingers Cue: visual Feedback: kinaesthetic	EEG: 10 channels with EMG to classify MI Device: 3-finger, 3-DOF each, exoskeleton (thumb, index, middle) Actuation: servomotors with rigid links Control: trigger	Mean classification accuracies: passive execution = 69.17%, hand execution = 71.25%, MI = 67.92%
Coffey et al., 2014 [92]	N=3 (All male) Right-handed Age range: 24-28y	Design and implementation of a MI-controlled hand orthosis	Hand digit and wrist contraction and extension Cue: visual (Graz MI) Feedback: kinaesthetic	EEG: 27 channels to classify MI Device: hand glove controlled by Arduino Actuation: pneumatic Control: trigger	Glove inflation-deflation cycle = 22s Classification accuracies of 3 participants: A = 92.5%, B = 90.0%, C = 80.0%
Diab et al., 2016 [103]	N=5	Design and implementation of EEG-triggered wrist orthosis with accuracy improvement	Hand opening and closing Cue: verbal instruction Feedback: kinaesthetic	EEG: 14 channels to detect hand movement-related EEG Device: actuated Talon wrist orthosis Actuation: linear Control: trigger	Mean classification accuracies: simulation studies = 95%, online BCI training = 86%

Fok et al., 2011 [102]	N=4	Design and implementation of a MI-controlled hand orthosis	Hand opening and closing Cue: unspecified Feedback: visual (cursor movement) and kinaesthetic	EEG: 14 channels to detect MI-related ERD Device: actuated Talon wrist orthosis Actuation: linear actuator Control: trigger	EEG signals from imagined hand movement was correlated with the contralesional hemisphere and utilised to trigger the actuation of orthosis ERD was detected from 12 Hz bin power of EEG during move condition
Li et al., 2019 [88]	N=14 (4F:10M) Mean age: 23.8±0.89y	Design and implementation of an attention-controlled hand exoskeleton with rigid-soft mechanism	Hand grasping Cue: visual (video of hand action) Feedback: kinaesthetic	EEG: 3 channels to map signals relative to attention Device: hand exoskeleton Actuation: linear actuator with rigid-soft mechanism Control: Trigger	Mean classification accuracy: 95.54% actuation success rate against the attention threshold
Holmes et al., 2012 [93]	N=6 (All male, young adults)	Design and implementation of a MI-controlled hand orthosis	Hand opening and closing Cue: textual Feedback: kinaesthetic	EEG: 14 channels to detect hand movement-related EEG Device: ExoFlex Hand Exoskeleton controlled by Arduino Actuation: linear actuator connected to chained links that flex Control: trigger	Classification accuracies of 6 participants: T001 = 95%, T002 = 98%, D001 = 91%, U001 = 93%, E001 = 87%, E002 = 86%
King et al., 2011 [104]	N=1 (Female) 24y	Contralateral control of hand orthosis using EEG-based BCI	Right hand idling and grasping Cue: textual	EEG: 63 channels to control contralateral hand movement Device: hand orthosis	Offline classification accuracy = 95.3±0.6%, $p < 3.0866 \times 10^{-25}$

King et al. (cont'd)			Feedback: visual and kinaesthetic	Actuation: servomotors attached to Bowden cables as tendons Control: trigger	Average lag from voluntary contractions to BCI-robot control = 2.24 ± 0.19 s (after 5 sessions)
Naros et al., 2016 [98]	N=32 (16F:16M) Mean age: 25.9 ± 0.5 y	2x2 factorial design with parameters: adaptive classifier threshold and non-adaptive classifier threshold, contingent feedback and non-contingent feedback	Opening of right hand Cue: auditory Feedback: kinaesthetic	EEG: 32 channels to detect ERD, with EMG to classify MI (FC3, C3, CP3 used) Device: Amadeo, Tyromotion, Austria Control: trigger	Significant enhancement in group 1 (adaptive classifier + contingent feedback), $p=0.0078$ Significant reduction in group 4 (non-adaptive classifier + non-contingent feedback), $p=0.0391$ Motor performance improvement over baseline from first and last tasks, significant results: Group 1 (adaptive classifier + contingent feedback), $p=0.0313$ Group 4 = (non-adaptive classifier + non-contingent feedback), $p=0.0411$
Ono et al., 2018-b [100]	N=28 Right-handed except 1	Implementation of an action observation strategy with visual and proprioceptive, or auditory feedback to MI Control group: SHAM	Grasping of a tennis ball with a hand Cue: visual (video of hand performing action) Feedback: visual, kinaesthetic and auditory	EEG: 9 channels to classify ERD Device: Power Assist Hand - Team ATOM, Atsugi, Japan Actuation: pneumatic motors with rigid links Control: trigger	AO+MI + proprioceptive and visual feedback: Mean MI-ERD powers of correct feedback vs SHAM provide significant interaction, $F_{1,17}=6.618$, $p=0.020$ (6 days) Statistically significant increase in MI-ERD power in correct feedback group over baseline, $p=0.012$ (6 days)
Stan et al., 2015 [94]	N=9	Trigger a hand orthosis using a P300 speller BCI	Spell E (enable), A (hand opening) and B (hand closing) in P300 speller BCI to perform hand grasping, moving and releasing objects Cue: textual (spelling)	EEG: 8 channels focusing on visual cortex Device: hand orthosis Actuation: 2 servomotors and	Mean classification accuracies: 100% (on 6 th letter flash during calibration)

Stan et al. (cont'd)			Feedback: visual (textual) and kinaesthetic	current feedback circuitry Control: trigger	
Ramos-Murguialday et al., 2012 [95]	N=23 Mean age (contingent positive, contingent negative, SHAM): 26.6±4y, 26.5±5y, 26.2±2y	Probing MI with proprioceptive feedback Experimental groups: contingent positive, contingent negative feedback Control group: SHAM	5 tasks: MI without direct control, MI with direct control, passive, active, rest Cue: auditory Feedback: visual and kinaesthetic	EEG: 61 channels with EMG to classify ERD/ERS Device: hand orthosis Actuation: DC motor M-28 with a worm gearhead and Bowden cables for each finger Control: trigger	Contingent positive feedback provided higher BCI performance during MI without feedback than contingent negative and SHAM; and higher during MI with or without feedback as compared to rest
Ramos-Murguialday and Birbaumer, 2015 [96]	N=9 Right-handed Mean age: 26.6±4y	Detect oscillatory signatures of motor tasks during EEG	5 tasks: MI without direct control, MI with direct control, passive, active, rest Cue: auditory Feedback: visual and kinaesthetic	EEG: 61 channels with EMG to classify ERD/ERS Device: hand orthosis Actuation: DC motor M-28 with a worm gearhead and Bowden cables for each finger Control: trigger	Significant change in power in all frequency ranges during MI with direct control before trial initiation Kinaesthetic feedback increased significant changes in alpha and beta power; therefore, increasing BCI performance
Randazzo et al., 2018 [90]	N=9 (2F:7M) Mean age: 23±5y	Design and implementation of a hand orthosis with testing of kinaesthetic effects in EEG	4 tasks: rest (REST), exoskeleton-induced hand motions (EXO), MI of right hand (MI), exoskeleton-induced hand motions plus MI (MIEXO) Cue: visual Feedback: kinaesthetic	EEG: 16 channels to detect MI Device: mano hand exoskeleton Actuation: linear servomotors attached to Bowden cables as tendons Control: passive (exoskeleton not dependent on MI to	Mean classification accuracies among groups: (vs REST) MI = 63.02±5.91%, EXO = 69.64±5.74%, MIEXO = 72.19±6.57% MIEXO vs EXO = 69.91±9.86% Chance level at 95% confidence = 58% (N=50 trials)

Randazzo et al. (cont'd)				move during MIEXO task)	
Tacchino et al., 2017 [91]	N=8 (7F:1M) Right-handed Mean age: 26.3±1.9y	2x2 factorial design with parameters: glove, no glove, active movement, passive movement	Opening and closing of hand, 4 tasks: (A) glove with active movement, (B) glove with passive movement, (C) no glove with active movement, (D) no glove and no movement Cue: auditory Feedback: kinaesthetic	EEG: 19 channels with EMG to detect ERD/ERS (C3, F3, Cz used) Device: Gloreha hand rehabilitation glove Actuation: electric actuators with Bowden cables on each finger Control: passive (glove not dependent on brain-state during tasks)	Statistically significant ERD changes in beta and mu bands were observed to initiate earlier in tasks A and C (involves active movement) Stronger and longer ERD was observed in tasks A and B (involves robotic assistance) suggesting reinforced afferent kinaesthetic feedback
Vukelic and Gharabaghi, 2015 [99]	N=11 (4F:7M) Right-handed Mean age: 25.83±3.1y	Assessment sensorimotor activity during MI with either visual or kinaesthetic feedback	Right hand opening Cue: visual (coloured cursor ball) Feedback: visual and kinaesthetic (separated by experimental groups)	EEG: 128 channels to detect ERD/ERS during MI (F3, CP3, C3 used) Device: Amadeo, Tyromotion, Austria Control: trigger	MI + kinaesthetic feedback group resulted in higher beta ERS (p=0.02) during rest and higher beta ERD (p=0.04) during MI Kinaesthetic feedback provides higher stability and sustained beta ERD activity than visual feedback
Witkowski et al., 2014 [101]	N=12 (4F:8M) Right-handed Mean age: 28.1±3.63y	Assessment performance and safety of EEG-EOG hybrid BCI	Right hand grasping Cue: visual (coloured squares and arrows) Feedback: kinaesthetic	EEG: 5 channels with EOG and EMG to detect ERD during MI Device: HX hand exoskeleton Actuation: DC motors with Bowden cables for thumb and index fingers Control: trigger	Mean classification accuracies: EEG only = 63.59±10.81% EEG/EOG hybrid = 60.77±9.42% Mean safety criterion violations during rest: EEG only = 45.91±26.8% EEG/EOG hybrid = 10.14±0.3%

Zhang et al., 2019 [89]	N=6 (2F:4M) Right-handed Age range: 23-26y	Implementation of a multimodal system using EEG, EMG and EOG to control a soft-robotic hand	Graz visualisation and auditory instructions, eye movements and physical practice (hand gestures) Cue: visual (Graz MI), auditory Feedback: visual and kinaesthetic	EEG with EMG and EOG: 40 channels to analyse ERD/ERS patterns Device: Soft pneumatic finger Actuation: pneumatic actuator with soft structures Control: trigger	Mean classification accuracies: EOG = 94.23% EEG = 31.46% EMG = 36.38% Multimodal = 93.83±0.02%
----------------------------	--	---	---	--	---

1077

1078 UE = Upper Extremity, MI = Motor Imagery, BCI = Brain-Computer Interface, RCT = Randomised Clinical Trial, SAT = Standard Arm Therapy,

1079 EMG = Electromyography, EOG = Electrooculography, ERD/ERS = Event-Related Desynchronisation/Synchronisation, FMMA = Fugl-Meyer Motor Assessment,

1080 ARAT = Action Research Arm Test, GS = Grip Strength, DOF = Degrees-of-Freedom

1081

1082

1083 **List of Abbreviations**

1084	ADL	Activities of Daily Living
1085	ANN	Artificial Neural Network
1086	AO	Action Observation
1087	AR	Augmented Reality
1088	ARAT	Action Research Arm Test
1089	BCI	Brain-Computer Interface
1090	BMI	Brain-Machine Interface
1091	CDRH	Center for Devices and Radiological Health
1092	CNN	Convolutional Neural Network
1093	CSD	Covariate Shift Detection
1094	CSP	Common Spatial Pattern
1095	DC	Direct Current
1096	ECoG	Electrocorticography
1097	EEG	Electroencephalography
1098	EMG	Electromyography
1099	EOG	Electrooculography
1100	ERD	Event-Related Desynchronisation
1101	ERP	Event-Related Potential
1102	ERS	Event-Related Synchronisation
1103	ERSP	Event-Related Spectral Perturbation
1104	FBCSP	Filter Bank Common Spatial Pattern
1105	FIR	Finite Impulse Response
1106	FMA-UE	Fugl-Meyer Motor Assessment – Upper Extremity
1107	GS	Grip Strength

1108	IIR	Infinite Impulse Response
1109	LDA	Linear Discriminant Analysis
1110	ME	Motor Execution
1111	MI	Motor Imagery
1112	PEDro	Physiotherapy Evidence Database
1113	PMA	Premarket Approval
1114	PRISMA	Preferred Reporting Items for Systematic Reviews and Meta-Analysis
1115	PROSPERO	International Prospective Register of Systematic Reviews
1116	PS	Pinch Strength
1117	QSR	Quality System Requirement
1118	RCT	Randomised Clinical Trial
1119	RNN	Recurrent Neural Network
1120	SAT	Standard Arm Therapy
1121	SVM	Support Vector Machine
1122	TRA	Technology Readiness Assessment
1123	TRL	Technology Readiness Levels
1124	UK-MRC	United Kingdom Medical Research Council
1125	VR	Virtual Reality