

1 **Severe volcanic SO₂ exposure and respiratory morbidities in the Icelandic population – a register** 2 **study**

3 **Authors:** Hanne Krage Carlsen^{1,2,3}, Unnur Valdimarsdóttir^{1,4,5}, Haraldur Briem⁶, Francesca Dominici⁴,
4 Ragnhildur Gudrun Finnbjornsdottir⁷, Thorsteinn Jóhannsson⁷, Thor Aspelund⁸, Thorarinn Gislason^{9,10},
5 Thorolfur Gudnason⁶

6 **Affiliations**

7 ¹ Centre of Public Health Sciences, University of Iceland, Reykjavík, Iceland; ² Environment and
8 Natural resources, University of Iceland, Sturlugata 7, 101 Reykjavik, Iceland; ³ Section of
9 Occupational and Environmental Medicine, School of Public Health and Community Medicine,
10 Institute of Medicine, University of Gothenburg, Medicinaregatan 16A, 40530 Gothenburg, Sweden ⁴
11 Department of Epidemiology, Harvard T.H. Chan School of Public Health, 677 Huntington Ave,
12 Boston, MA 02115, Massachusetts, USA. ⁵ Department of Medical Epidemiology and Biostatistics,
13 Karolinska Institutet, SE-171 77, Stockholm, Sweden; ⁶ Chief Epidemiologist, Directorate of Health,
14 Centre for Health Threats and Communicable Diseases, Barónsstigur 57, 101 Reykjavík, Iceland; ⁷ The
15 Environment Agency of Iceland, Suðurlandsbraut 24, 108 Reykjavík, Iceland; ⁸ School of Health
16 Sciences, University of Iceland, Sæmundargata 2, 101 Reykjavík, Iceland; ⁹ Landspítali – the National
17 University Hospital, Fossvogur, 108 Reykjavík, Iceland; ¹⁰ Faculty of medicine, University of Iceland,
18 Vatnsmýrarvegi 16, 101 Reykjavík, Iceland

19

20 **Corresponding author**

21 Hanne Krage Carlsen,

22 Environment and Natural resources,

23 Sturlugata 7, University of Iceland,

24 101 Reykjavík, Iceland

25 hkc1@hi.is, hanne.krage.carlsen@amm.gu.se

26 0046 766 238 918

27 **Acknowledgements**

28 The authors wish to acknowledge The Environment Agency of Iceland and Kristinn Jónsson from The
29 Icelandic Directorate of health for providing data and Dr. Evgenya Ilyinskaya for valuable comments
30 on the manuscript. The study was funded by the Icelandic Ministry of Health. The funding source had
31 no influence on the reporting or publication of the study.

NOTE: This preprint reports new research that has not been certified by peer review and should not be used to guide clinical practice.

32 The authors declare they have no actual or potential competing financial interests.

33 **Abstract**

34 **Background**

35 The Holuhraun volcanic eruption September 2014 to February 2015 emitted large amounts of sulfur
36 dioxide (SO₂).

37 **Objectives**

38 The aim of this study was to determine the association between volcanic SO₂ gases on general
39 population respiratory health in the Icelandic capital area some 250 km from the eruption site.

40 **Methods**

41 Respiratory health outcomes were: asthma medication dispensing (AMD) from the Icelandic Medicines
42 Register, medical doctor consultations in primary care (PCMD) and hospital emergency department
43 visits (HED) in Reykjavík (population: 215 000) for respiratory disease from 1 January 2010 to 31
44 December 2014. The associations between daily counts of health events, and daily mean
45 SO₂ concentration and high SO₂ levels (24-hour mean SO₂>125µg/m³) were analyzed using
46 generalized additive models.

47 **Results**

48 After the eruption began, AMD was higher than before (129.4 vs. 158.4 individuals per day, $p<0.05$).
49 Increases in SO₂ concentration were associated with an estimated increase in AMD by 1.05% (95% CI
50 0.48 - 1.62%) per 10 µg/m³ at lag 0-2, 1.51% (95% CI 0.63 – 2.40%) increase in individuals under 18
51 years of age. PCMD for respiratory causes increased by 1.52% (95% CI 1.04 -2.00%) per 10 µg/m³ SO₂
52 at lag 0-2. For HED, only effect estimated for individuals aged 64 years and older were significantly
53 increased, by 1.541% (95% CI 0.02- 3.07%) per 10 µg/m³ SO₂ at lag 0-2. Following days with
54 SO₂ levels above 125 µg/m³, AMD and PCMD were increased in all age groups, in AMD mostly so in
55 individuals under 18 by 20.4%(95%CI 4.8 – 23.4%), and adult PCMD visits by 24.1%(95%CI 16.8 –
56 31.3%). HED was significantly increased in elderly by 26.3% (95%CI 5.56-47.0).

57 **Discussion**

58 High levels of volcanic SO₂ are associated with increases in dispensing of AMD, and health care
59 utilization in primary and tertiary care. Individuals with prevalent respiratory disease may be
60 particularly susceptible.

61 **Funding**

62 The study was funded by the Icelandic Ministry of Health.

63 **Keywords:** Volcanic eruption, atmospheric transport, asthma, infectious respiratory disease,
64 epidemiology, public health.

65

66 **Introduction**

67 The Holuhraun volcanic eruption in the Barðarbunga central volcanic system in the fall and winter of
68 2014-2015 was the largest eruption in Iceland since the Laki eruption in 1783-1784. Some 12 million
69 tons of sulphur dioxide, SO₂, was emitted from the eruption and the lava field,(Gíslason et al. 2015) and
70 was dispersed widely over Iceland according to meteorological conditions,(Ilyinskaya et al. 2017)
71 reaching the capital area, some 250 km from the eruption site where the 24-hour air quality guideline
72 limit for SO₂, 125 µg/m³ (WHO 2007) was exceeded repeatedly during the fall of 2014.. A previous
73 study of professionals working at the eruption site with very high exposures experienced no serious
74 health effects after exposure, perhaps because they were wearing protective equipment such as
75 masks.(Carlsen et al., 2019). Meanwhile,population-level health effects remain to be investigated, in
76 particular in sensitive populations such as children and the elderly.

77 SO₂ exposure at concentrations over 500 µg/m³ is associated with irritation of the respiratory tract in
78 susceptible individuals.(WHO 2007) At higher concentrations, SO₂ exposure can trigger respiratory
79 symptoms such as acute bronchial asthma, pulmonary oedema, and respiratory distress – especially in
80 individuals with hyper-reactivity syndrome.(Nowak et al. 1997; WHO 2007, EPA 2008) Exposure to
81 SO₂ from active volcanoes is associated with increased rates chronic cough and phlegm and dry and
82 sore throat.(Ishigami et al. 2008; Iwasawa et al. 2009, 2010; Kochi et al. 2017; Longo 2013; Longo et
83 al. 2010, 2008; Longo and Yang 2008) Fatalities from very high SO₂-related exposure near volcanoes
84 have also been reported.(IVHHN.ORG) While some of the previous studies report dose-response
85 relationship between SO₂ and respiratory symptoms, their study designs and methods leave most of
86 them prone to bias as symptoms were most often self-reported and participants were aware of their
87 exposure status.(Hansell and Oppenheimer 2004) Moreover, most of the existing literature pertains to
88 long-term area-wide exposure whereas SO₂ exposure in Iceland during the Holuhraun eruption was
89 intermittent with few hours or days of high SO₂ concentrations followed by periods of low SO₂
90 concentrations when wind directions changed.(Ilyinskaya et al. 2017)

91 With population-based registers on medicine dispensing and health care utilization as well as vigorous
92 monitoring of air pollution in the capital area, Iceland provides an ideal setting for studying health
93 effects of exposure to SO₂ from volcanic eruption. The objective of this study was therefore to study
94 the acute health effects of exposure to volcanic SO₂ on respiratory health in the general population of
95 Iceland. We hypothesized that respiratory health care utilization due to respiratory system illness would
96 be increased in the general population following days with SO₂ concentrations above the air quality
97 guideline value of 125µg/m³ per 24 hours. Furthermore, we investigated the associations of health
98 outcomes with continuous exposure, the lag-times of the effects and effects in age groups and
99 respiratory infections and obstructive respiratory disease.

100 **Material and methods**

101 The Holuhraun volcanic eruption in North-East central Iceland began 31 August 2014 and ended 27
102 February 2015. The study period was 1 January 2010 – 31 December 2014, and the time before the
103 eruption was used a reference period. The Holuhraun eruption persisted for until end of February 2015,
104 whereas our study period ends 31 December 2014 due to a change in the database recording of events.
105 However, SO₂ never exceeded the air quality guideline limit during January and February 2015,
106 although daily mean concentrations were still higher than before the eruption.

107 The mean population of Iceland during the study period was 320 000 inhabitants. The capital area,
108 Reykjavík and surrounding municipalities, had 205 282 residents at the beginning of the study period,
109 and 215 965 residents at the end.(Statistics Iceland 2017) The analysis was restricted to the capital area
110 (residential postcodes 101-171, 200-225, and 270) where adequate information about SO₂ exposure was
111 available for the whole study period. The Icelandic health care system is state-centred, mainly publicly
112 funded system with universal coverage. (Sigurgeirsdóttir et al. 2014) We obtained data on respiratory
113 health from 1)) the National Medicines Register; 2) Primary care centres (that function as first point of
114 contact) and 3) Landspítali, the national university hospital, the country's centre of clinical excellence
115 (Sigurgeirsdóttir et al. 2014). All three registers are held by the Icelandic Directorate of Health and
116 extraction is subject to approval from the Icelandic Bioethical Committee. From the National Medicines
117 Register we extracted data on dispensing (pharmacy sales to individuals) of prescription anti-asthma
118 medication (AMD) classified by Anatomical Therapeutic Chemical code R03.(WHO 2015b) This class
119 of drugs are prescribed for relieving symptoms of asthma and chronic obstructive pulmonary disease,
120 COPD, and in some cases to relieve breathing difficulties in individuals with respiratory infections.
121 Asthma medication dispensing is a proxy for respiratory health in a population and mild disease
122 episodes (Menichini and Mudu, 2010; Conti et al., 2015; Furu et al., 2010). The data were extracted
123 along with individual data on residence (postcode), age, sex and an anonymous personal identification
124 number. From the primary care centers (PCC) and hospital emergency department (HED) databases at
125 the Directorate of Health we extracted data on individuals diagnosed with respiratory illnesses
126 (International Classification of Disease, ICD code J (WHO 2015a)) along with data on residence
127 (postcode), age, sex, and an anonymous personal identification number. As the same bout of illness is
128 likely to result in recurring health care contacts we included only the first instance of an individual
129 registration within a 14-day period for the same diagnosis category to avoid exposure misclassification
130 with respect to the timing of the outcome. For primary care, we analysed the number of MD visits
131 (PCMD) in the main analysis (the total number of contacts including phone calls and consultations were
132 analysed in a sensitivity analysis). For HED, all visits were included regardless whether the individual
133 was admitted to hospital. For each outcome, we constructed daily time series starting 1 January 2010 to
134 31 December 2014 for the following age groups; children (under 18 years of age), adults (18-64 years),
135 and elderly (age 65 years and above).

136 We obtained SO₂, PM₁₀, and NO₂, data along with meteorological data from the Icelandic Environment
137 Agency's stationary air pollution monitor located in Reykjavík (Figure 1) for the study period and
138 constructed a time series of daily mean values.

139 Statistical methods

140 Descriptive statistics were calculated for all exposure and outcome variables for the period before and
141 after the beginning of the eruption (using age at date of first occurrence in the data). A correlation matrix
142 of exposure variables can be found in the supplement. We use the t-tests to assess as whether there was
143 a statistically significant difference in concentrations of relevant pollutant and the number of daily health
144 outcome evens before and during the eruption.

145 In the regression analysis of the daily number of contacts for all outcomes during the whole study
146 period, SO₂ exposure was given as a) a continuous variable, or b) an indicator value of the 24-hour SO₂
147 concentration exceeding the air quality guideline value (125 µg/m³). (WHO 2007)

148 We fitted to the data distributed lag non-linear models (DNLM). (Gasparri et al. 2010) to identify the
149 delay in days (lag days) from exposure to the observed health outcomes (Supplemental figure S1 and
150 S2). We estimated the effects of SO₂ exposure on the outcome by fitting generalized additive models
151 (GAM), (Peng and Dominici, 2008)

$$\begin{aligned} 152 \quad & Y_t \sim \text{Quasipoisson}(\mu_t) \\ 153 \quad & \log \mu_t = \alpha + \beta_1 \text{SO}_{2t} + \beta_2 \text{PM}_{10} + \beta_3 \text{NO}_2 + \beta_4 \text{Temperature} + \beta_5 \text{RelativeHumidity} + \beta_6 I_{dow} + \beta_7 \text{Strike} \\ 154 \quad & + s_1(\text{day of the year, bs="cc"}) + s_2(\text{day in the time series, 4}) \end{aligned}$$

155
156 Where Y_t denotes the daily number of health events, β_1 denotes the log relative rate of events associated
157 with a 10 µg/m³ increase in SO₂. The terms $s_1(\text{day of the year, bs="cc"})$ and $s_2(\text{day in the time series, 4})$,
158 4), are smoothing functions (smoothing splines) of season and calendar time designed to control for
159 seasonal trends and trends during the whole study period, I_{dow} is an indicator for day of week and Strike
160 is an indicator of strike days (used only in HED and PCC data)

161 The main exposure variable is moving three-day averages (lag 0-2) of SO₂. We adjusted for seasonality
162 using cubic cyclical basis, based on day of each year. We adjusted for overall time trend using
163 smoothing spline across the entire study period with four degrees of freedom. (Bhaskaran et al. 2013)
164 In addition, we added a factor variables to adjust for day-of week and odd holidays. For PCC and HED
165 visits an indicator factor variable was created to adjust for days where medical doctors (MD's) were on
166 strike as some "strike days" were also high SO₂ days. Several methods of addressing this issue; no
167 adjustment, excluding strike days, or adjusting for the indicator were tested.

168 The results are adjusted for co-pollutants and weather (PM₁₀, NO₂, temperature, and relative humidity)
169 at the same lag intervals as the main exposure. Results from unadjusted models are found in the
170 supplement.

171 Quasipoisson distribution was assumed for all outcomes. As certain diagnoses categories may be of
172 interest, we also present results for PCMD and HED visits stratified by subcategory into infectious
173 respiratory disease categories for a) infectious diseases including acute upper respiratory infections (ICD
174 codes J00-J06); influenza and pneumonia (J09-J18), and other acute lower respiratory infections
175 (J20-J22), and b) obstructive respiratory disease, including chronic obstructive pulmonary disease,
176 COPD, and asthma (J44 and 45).

177 *Sensitivity analysis*

178 We performed sensitivity analyses on all primary contacts including phone calls, consultations, and
179 “other”, as actual PCMD visits are subject to availability. We also repeated the main analysis including
180 recurring contacts for the same diagnoses within 14 days to estimate the true impact on the health care
181 systems from increased population morbidity. For HED visits, we performed a sensitivity analysis
182 including only individuals who were admitted for in-patient care. With regards to regular asthma
183 medication users, official advice was broadcast to the public on days with high SO₂ to ensure that
184 individuals with respiratory diseases would have sufficient medicine at hand. In order to evaluate
185 whether the observed results were merely due to compliance, we performed a sensitivity analysis
186 excluding a) the first day, and b) the first week, in a series of days with high SO₂ concentrations.
187 Additionally, we performed sensitivity analysis on different lags of the HED data as our exploratory
188 analysis revealed age-specific effects at different lags (Figure S1). To eliminate any confounding effect
189 of other volcanic eruptions ((Eyjafjallajökull 2010 and Grímsvötn 2011) that impacted air quality during
190 the study period,(Gudmundsson et al. 2012; Thorsteinsson et al. 2012) we repeated the main analyses
191 for AMD, PCMD and HED excluding the years 2010 and 2011. Also, we performed analyses allowing
192 for non-linearity of both lag structure, and concentration of SO₂ and present those results in the
193 supplement (Figure S1 and Figure S2) and investigated lag-responses of sub-categories of respiratory
194 disease (Figure S3). We used an autoregressive term (adjusting for the outcome at lag 1) to improve the
195 autocorrelation of the model residuals (Brumback et al., 2000). All analysis was performed in R using
196 the packages “mgcv”(Wood 2018) and “dlnm”.(Gasparrini et al. 2018)

197 **Results**

198 The daily mean SO₂ concentrations in Iceland's capital area were low or moderate, until the Holuhraun
199 eruption began 30 August 2014 (Table 1, Figure 2, Figure S5). After the eruption began, SO₂
200 concentrations surpassed the air quality guideline limit (125 µg/m³) on ten days, and both mean and
201 median concentrations were significantly higher than before the eruption began.

202 Before the eruption, an average of 129.4 individuals per day were registered purchasing (=were
203 dispensed) AMD. The individuals, were mostly female (56.3%) and the mean age was 35.7 (SD 22.9)
204 years. After the eruption began, there were an average of 158.4 individuals per day. The mean age was
205 44.5 (SD 26.3) years. Before the eruption, 106 528 individuals, attended primary care s for respiratory
206 disease, the mean age was 32.8 (SD 22.5) years and 60.9% were women. After the eruption began, 15
207 806 individuals attended primary care for respiratory diseaseand the mean age was 35.0 years (SD 26.6),
208 60.4% were women. The most common form of contact was GP visits (61%) and phone calls (33%)
209 (See flowchart in supplement for detail of the selection process). In HED, 19 541 individuals were
210 registered seeking care for respiratory health outcomes before the eruption . The mean age was 36.3
211 years (SD 29.4) and 49.8% were women. After the eruption began, there were 1 932 individuals visited
212 HED with a mean age of 39.4 years (SD 30.5) and 51.8% women (Table 1, Figure 2).

213 After the eruption began, SO₂ was significantly higher than before; 35.7 µg/m³ (SD 71.2) vs 1.4 µg/m³
214 (SD 1.1). The daily number of number of individuals with AMD was significantly increased compared
215 with the reference period (129.4 vs 158.4, $p < 0.001$). Neither total nor age categories of HED and PCMD
216 MD visits were significantly higher or lower during the eruption period as a whole compared to the
217 period before (Table 2, Figure 2).

218 **Regression analysis results**

219 In the adjusted regression analyses of the whole study period 2010-2014 we found that after adjusting
220 for other pollutants and weather, exposure to SO₂ at short lags (lag 0-2, figure S2) was associated with
221 an estimated increase in the number of AMDs to individuals of all ages by 1.05% (95% CI 0.48 –
222 1.62%) per 10 µg/m³ SO₂. For children 0-17 years of age, the estimate was higher, 1.51% (95% CI 0.63
223 – 2.40%) and for individuals 65 years and older, the estimate was lower, 0.77% (95% CI 0.05 – 1.51).
224 SO₂ concentrations exceeding the air quality guideline of 125µg/m³, were associated with a statistically
225 significant increase in dispensing of AMD at lag 0–2 by 13.5% (95% CI 5.3- 21.7%), the increase was
226 20.4% (95% CI 8.0-32.9%) in individuals under 18 years of age (Table 3). In the age-stratified analysis,
227 the association effect estimates were highest in children under 18 by 20.4% (95% CI 8.0 - 32.9%) and
228 with a lower estimate for elderly, 8.8% (95%CI -1.9 – 19.5%) which did not reach statistical
229 significance.

230 For PCMD and HED, including an indicator variable for days where MDs were on strike improved the
231 model fit and was an effect modifier which increased the effect estimates, so this variable was added to

232 the PCMD and HED models. PCMD visits increased by 1.52% (95% CI 1.04 – 2.00%) per 10 $\mu\text{g}/\text{m}^3$
233 SO_2 at lag 0–2 for all ages, and stratifying by age, the increase was highest in adults.

234 For PCMD, short term exposure to SO_2 over the air quality guideline value was associated with
235 increases by 21.6% (95% CI 15.1 – 28.6%). The increase was highest in adults by 24.1% (95% CI 16.8
236 – 31.3%).

237

238 For HED visits, SO_2 exposure was associated with increased risk for individuals older than 64 at lag 0–
239 2 (Figure S1) by 1.54% (95% CI 0.02 – 3.07%) per 10 $\mu\text{g}/\text{m}^3$ (Table 3). For exposure over the air quality
240 guideline limit, the effect estimate significantly increased only in elderly by 26.3% (95% CI 5.56 –
241 47.0%).

242 Stratifying by diagnosis category, SO_2 exposure was associated with increased PCMD visits for
243 respiratory infections at lag 0–2 by 1.35% (95% CI 0.80 – 1.89%) per 10 $\mu\text{g}/\text{m}^3$. PCC contacts for
244 obstructive disease were increased by 2.48% (95% CI 1.57 – 3.39%). Following air quality guideline
245 value exceedances, the estimated increase in PCC MD visits were 19.0 (95% CI 10.5 – 28.1%) and
246 34.3% (95% CI 18.5 – 52.2%) for respiratory infections and obstructive disease, respectively. For HED
247 visits, SO_2 exposure was not associated with significant increases in visits due to respiratory infections
248 or asthma or COPD although all estimates were positive (Table 4).

249 In the sensitivity analysis, the unadjusted associations between SO_2 exposure and health outcomes was
250 only marginally different (<10 percentage point change) from the adjusted results (Table S1) with the
251 exception of the estimates for HED visits which decreased from 1.12% (95% CI 0.19 – 11.2%) to 0.84%
252 (95% CI -0.08-1.76%). However, the estimated association with HED visits in elderly increased from
253 1.54% (95% CI 0.02 – 3.70%) in the adjusted analysis to 1.70% (0.26 -3.16%) in the unadjusted
254 analysis.

255 Sensitivity analysis

256 In sensitivity analyses of the outcome variables, considering all PCC contacts including phone calls and
257 consultations, the estimated effect of SO_2 increased slightly, most so in elderly, where the estimate
258 increased from 1.36 (95% CI 0.44 - 2.28%) per 10 $\mu\text{g}/\text{m}^3$ SO_2 in the main analysis (Table 3) to 1.44%
259 (95% CI 0.69 – 2.19%) (Table S2). Not excluding the recurring contacts (individuals with two or more
260 PCC contacts within 14 days), the age distribution had shifted further, so the estimated increase in
261 events in elderly reached 1.56% (95% CI 0.85 – 2.28%) per 10 $\mu\text{g}/\text{m}^3$. The estimated effects of exposure
262 to SO_2 concentrations above the air quality guidelines on AMD and PCMD followed a similar pattern
263 to that of continuous exposure where adults had the highest effect estimated. In the analysis of HED
264 admissions rather than all visits, all effect estimates were positive, but only HED visits in children at
265 lag 2-4 reached statistical significance and were estimated to increase 6.0% (95% CI 1.29-10.7%) per

266 10 $\mu\text{g}/\text{m}^3$ SO_2 (Table S2) and 175.2% (95% CI 20.9-526.2%) after SO_2 levels over the air quality
267 guideline limit. In this analysis, there were no significant associations between SO_2 and HED at lag 0-
268 2.

269 In sensitivity analysis to investigate the importance of compliance on the observed associations with
270 AMD and PCC, we removed the first day in a series of days with high SO_2 concentrations (Table S3).
271 The estimated effect of SO_2 exposure on AMD and PCC outcomes was higher for children than in the
272 main analysis, but lower in adults compared to the main analysis. Excluding the whole week after the
273 first high SO_2 concentrations in the capital area, effect estimates for both AMD and PCC were higher
274 in elderly and adults compared to the main analysis. Considering effects on HED of SO_2 exposure at
275 lag 2-4 altered the age-distribution of the results, so that there HED in children were increased by 2.09%
276 (95% CI 0.51-3.70%)

277 Excluding the years 2010 and 2011 where ash-rich volcanic eruptions occurred yielded generally
278 similar, albeit slightly attenuated estimates which in few cases failed to reach statistical significance.
279 Also, the association between HED and SO_2 at lag 2-4 were calculated (Table S3).

280 **Discussion**

281 In this study, a comparison of health care utilisation in Iceland's capital are before and after the eruption
282 began showed that only AMD increased significantly during the Holuhraun eruption, but primary care
283 and hospital care was not higher during the eruption than before. However, in adjusted time series
284 regression analysis, SO_2 concentrations were associated with increased AMD, MD visits in primary
285 care for respiratory causes and hospital emergency department visits at lag 0-2. Using a cut-off or
286 continuous measure of SO_2 resulted in largely similar estimates (Table 3). The effect estimates for
287 specific disease categories indicate that individuals with obstructive lung disease were particularly
288 affected (Table 4).

289 In the regression, our choice of lags were informed - exploratory analysis (Figures S1). For AMD and
290 PCC visits the observed increase occurred during the same day and up to two days after a peak in SO_2
291 concentration. HED visits increased one to three days after a peak in SO_2 which could indicate that
292 primary care is the first point of contact for a majority of individuals and hospital care is sought only
293 after other care options have been exhausted. In the compliance analysis, the effect of initial warnings
294 of volcanic gas exposure appeared to be limited, as excluding the first day or week of high SO_2 yielded
295 similar estimates for AMD and PCC visits, although there was some loss of statistical power. This
296 indicates that the increase reflected actual increased respiratory morbidities rather than only compliance
297 as it persisted after first exposure (Supplemental Table S2). We present both unadjusted results (Table
298 S1) and results adjusted for other air pollutants (Tables 3 and 4) as well as plotted an exposure-response
299 function with a spline. Comparing the results from the continuous analysis and the cut-off analysis, we
300 found little indication of significant non-linear effects, which is also observed in the spline plot of the

301 exposure-response function (Figure S2). Our results are mostly consistent with those from previous
302 studies of SO₂ exposure in urban settings; e.g. respiratory mortality rates were estimated to increase by
303 2.4% per 27 µg/m³ SO₂ (Li et al. 2017), corresponding to a point estimate of 0.88% per 10 µg/m³ SO₂,
304 which is lower than the estimates for HED and PCMD estimate of respiratory morbidity associated with
305 SO₂ found in this study; 1.12% (95% CI 0.19-2.05%) and 1.52% (95% CI 1.04 – 2.00%) per 10 µg/m³
306 SO₂, respectively. In previous studies of SO₂ exposure during volcanic eruptions, the SO₂ concentration
307 on Miyakejima Island increased after Mount Oyama erupted in 2000. After evacuating the island at the
308 time of the eruption, residents and aid workers returned from 2005 and onwards. Aid volunteers (n=611)
309 reported respiratory irritation and the rates were associated with SO₂ exposure - particularly among
310 women and non-smokers.(Ishigami et al. 2008) During the same eruption, children, who were exposed
311 to daily mean concentration of 125 µg/m³ SO₂, had increased rates of wheezing.(Iwasawa et al. 2010)
312 In a follow-up study 2006-2011, permanent residents of Miyakejima Island (n=168) who lived in areas
313 with SO₂ reported increased rates of cough and wheeze few effects.(Kochi et al. 2017) None of the
314 studies of people exposed at Miyakejima Island found adverse effects on lung function.(Ishigami et al.
315 2008; Iwasawa et al. 2009, 2010; Kochi et al. 2017) The Kilauea Volcano in Hawaii has been erupting
316 continuously since 1983 with periods of increased eruption activity from 2008. SO₂ concentrations
317 spiked from a daily mean concentration of 72 µg/m³ to 215 µg/m³ in a populated area downwind during
318 this period and the rates of cough, and acute pharyngitis diagnosed at a clinic in the exposed community
319 increased subsequently.(Longo et al. 2010) A cross sectional study found that those living in areas
320 exposed to SO₂ had increased risk of cough, phlegm, and hay fever. A qualitative survey of subjects
321 from the same study population revealed that participants reported that symptoms disappeared 7-10
322 days after leaving the exposed area, but reappeared one week after returning.(Longo et al. 2008) In a
323 study of individuals exposed at the Holuhraun eruption site we found that while some reported
324 respiratory symptoms during their stay at the eruption site, most symptoms had resolved and lung
325 function was normal at a clinical examination one to six days later.(Carlsen et al. 2019) Regarding
326 individual susceptibility, we observed the highest effect estimates for PCMD visits for asthma and
327 COPD (Table 4). The effect estimate for HED visits were also increased but did not reach statistical
328 significance. In controlled trials, hyper-responsiveness to SO₂ has previously been reported as common
329 (20-25%) in individuals with positive asthma test (methacoline test).(Nowak et al. 1997), indicating
330 that they be particularly vulnerable to severe SO₂ exposure. Similarly, respiratory infections were
331 increased in PCMD visits and tended to be increased for HED visits, although the increase did not reach
332 statistical significance. Finally, an association between SO₂ and hospital visits for upper respiratory
333 tract infections has previously been reported(Li et al. 2017).

334 Previous studies of health effects of air pollution in Iceland have yielded lower effect estimates of daily
335 air pollution on morbidity than the current study,(Carlsen et al. 2012b) other air pollution exposure
336 types are thus not likely to bias the results. This includes H₂S, which has a low correlation (<0.1) with

337 the exposure of interest during the study period (data not shown). During the reference period, there
338 were two ash-rich volcanic eruptions, in Eyjafjallajökull 2010 and Grímsvötn 2011. While ash from
339 Eyjafjallajökull had local respiratory health effects (Carlsen et al. 2012a) and there may have been
340 adverse health effects in the capital area, (Carlsen et al. 2015) neither eruption had significant SO₂
341 emissions and sensitivity analysis excluding this period yielded similar results (Supplemental Table
342 S2). Our study employs a time series design where individual level risk factors are not time-dependent
343 and thus should not confound the association between short term exposure to air SO₂ and health
344 outcomes, leaving bias due to unmeasured confounders, seasonal variation, and other intermittent
345 exposures as main concerns. The exposed period October and November of 2014 did not coincide with
346 any viral respiratory illnesses (e.g. influenza and RS-virus) epidemic, (Tilkynningarskyldir sjúkdómar
347 2018) but it did coincide with the MD labour conflict which resulted in lower PCC and HED attendance
348 during those days, Hence, results from the analysis comparing the eruption period with the time before
349 may have underestimated of true effect of the SO₂ from the eruption.

350 SO₂, PM₁₀ and NO₂ data was missing for a number of days which were excluded from the analysis. As
351 the volcanic plume effectively changed the chemical composition of the atmosphere during the eruption
352 period (Supplemental Tables S4a-b), the correlations of SO₂ with other air pollutants were altered after
353 the eruption (we present unadjusted results in the supplement (Supplemental Table S1)). The results
354 from these are nearly identical to the main analysis (Table 3), indicating that the effect of the very high
355 concentrations of SO₂ was unambiguous.

356 It is a strength of the current study that health data were collected prospectively from population-wide
357 registers, which minimizes the risk of information bias from individuals knowing their exposure status.
358 Although the exposure would have been known to the public for at least part of the exposed period but
359 we attempt to address this source of bias in the sensitivity analysis, showing only moderate changes to
360 the results (Table S3). As a study outcome, we use dispensing of asthma-medication, a novel and more
361 sensitive proxy than primary care attendance and hospital visits. It measures morbidity in individuals
362 who in most cases already are in contact with the health care system. However, this outcome has been
363 used in other studies and is known to be a proxy for asthma morbidity in a population (Furu et al., 2010;
364 Naureckas et al., 2005) and be associated with air pollution (Menichini and Mudu, 2010; Fattore et al.,
365 2016) A limitation with register-data is that it is not collected for research purposes and diagnoses given
366 in the health care system could be biased towards overestimation as medical professionals assume
367 respiratory outcomes to be more likely during the eruption. However, as the estimated effect are similar
368 across all respiratory outcomes we conclude that this sources of bias is not likely to fully explain our
369 findings.. By basing exposure status on residential postcode we assume that people spend most of their
370 time at home, however, outcomes in individuals not in the exposed area during the study period would
371 bias the results toward the null. Reykjavík and the Icelandic capital area was exposed to SO₂
372 concentrations above 125µg/m³ during a total of ten days which occurred mostly during October and

373 November 2014. This limits the statistical power of the study and our options for further analysis, as
374 does the fact that our study period did not extend until after the eruption, meaning that we cannot fully
375 assess the importance of population increase during the study period on our results.

376 In conclusion, this comprehensive study with prospectively collected data on volcanic air pollution
377 exposure and respiratory outcome, is the first to firmly establish an association between spikes of high
378 SO₂ concentrations and respiratory outcomes in the general population, particularly in individuals with
379 prevalent respiratory disease. These findings emphasise the need for attention from authorities and
380 parents to the health susceptible individuals during times of volcanic eruptions.

381 **Acknowledgements**

382 The authors wish to acknowledge the The Environment Agency of Iceland and Kristinn Jónsson from
383 the Icelandic Directorate of health for providing data, and Dr. Evgenya Ilyinskaya for valuable
384 comments on the manuscript. The study was funded by the Icelandic Ministry of Health. The funding
385 source had no influence on the reporting or publication of the study.

386

387 **References**

- 388 Bhaskaran K, Gasparri A, Hajat S, Smeeth L, Armstrong B. 2013. Time series regression studies in
389 environmental epidemiology. *Int J Epidemiol* 42:1187–1195; doi:10.1093/ije/dyt092.
- 390 Brumback, B. A., Ryan, L. M., Schwartz, J. D., Neas, L. M., Stark, P. C., & Burge, H. A. (2000).
391 Transitional regression models, with application to environmental time series. *Journal of the*
392 *American Statistical Association*, 95(449), 16-27.
- 393 Carlsen HK, Aspelund T, Briem H, Gíslason T, Johannsson T, Valdimarsdóttir UA, et al. 2019
394 Respiratory health among professionals exposed to extreme SO₂ levels from a volcanic
395 eruption. *Scandinavian Journal of Work, Environment & Health*, doi:10.5271/sjweh.3783
- 396 Carlsen HK, Gíslason T, Forsberg B, Meister K, Thorsteinsson T, Jóhannsson T, et al. 2015. Emergency
397 Hospital Visits in Association with Volcanic Ash, Dust Storms and Other Sources of Ambient
398 Particles: A Time-Series Study in Reykjavík, Iceland. *International Journal of Environmental*
399 *Research and Public Health* 12:4047–4059; doi:10.3390/ijerph120404047.
- 400 Carlsen HK, Hauksdóttir A, Valdimarsdóttir UA, Gíslason T, Einarsdóttir G, Runolfsson H, et al.
401 2012a. Health effects following the Eyjafjallajökull volcanic eruption: a cohort study. *BMJ*
402 *Open* 2; doi:10.1136/bmjopen-2012-001851.
- 403 Carlsen HK, Zoëga H, Valdimarsdóttir U, Gíslason T, Hrafnkelsson B. 2012b. Hydrogen sulfide and
404 particle matter levels associated with increased dispensing of anti-asthma drugs in Iceland's
405 capital. *Environ Res* 113:33–39; doi:10.1016/j.envres.2011.10.010.
- 406 Chief Epidemiologist. 2018. Reportable diseases (Tilkynningarskyldir sjúkdómar). Directorate of
407 Health Iceland. Available: [https://www.landlaeknir.is/smit-og-](https://www.landlaeknir.is/smit-og-sottvarnir/smitsjukdomar/tilkynningarskyldir-sjukdomar/)
408 [sottvarnir/smitsjukdomar/tilkynningarskyldir-sjukdomar/](https://www.landlaeknir.is/smit-og-sottvarnir/smitsjukdomar/tilkynningarskyldir-sjukdomar/) [accessed 19 November 2018].
- 409 Conti S, Lafranconi A, Zanobetti A, Cesana G, Madotto F, Fornari C. 2017. The short-term effect of
410 particulate matter on cardiorespiratory drug prescription, as a proxy of mild adverse events.
411 *Environmental Research* 157:145–152; doi:10.1016/j.envres.2017.05.029.
- 412 EPA. Integrated Science Assessment (ISA) for Sulfur Oxides—Health Criteria. Rep EPA/600/R-
413 08/047F. 2008.
- 414 Fattore E, Davoli E, Castiglioni S, Bosetti C, Re Depaolini A, Marzona I, et al. 2016. Wastewater-
415 based epidemiological evaluation of the effect of air pollution on short-acting beta-agonist
416 consumption for acute asthma treatment. *Environmental Research* 150:106–111;
417 doi:10.1016/j.envres.2016.05.051.
- 418 Furu K, Skurtveit S, Langhammer A, Nafstad P. 2007. Use of anti-asthmatic medications as a proxy
419 for prevalence of asthma in children and adolescents in Norway: a nationwide prescription
420 database analysis. *Eur J Clin Pharmacol* 63:693–698; doi:10.1007/s00228-007-0301-9.
- 421 Gasparri A, Armstrong B. 2010. Time series analysis on the health effects of temperature:
422 Advancements and limitations. *Environ Res* 110:633–638; doi:[10.1016/j.envres.2010.06.005](https://doi.org/10.1016/j.envres.2010.06.005).
- 423 Gasparri A, Armstrong B, Scheipl F. 2018. *dlnm: Distributed Lag Non-Linear Models*.

- 424 Gíslason S., Stefánsdóttir G, Pfeffer MA, Barsotti S, Jóhannsson T, Galeczka I, et al. Environmental
425 pressure from the 2014–15 eruption of Bárðarbunga volcano, Iceland. *Geochemical*
426 *Perspectives Letters* 84–93; doi:10.7185/geochemlet.1509.
- 427 Gudmundsson MT, Thordarson T, Höskuldsson Á, Larsen G, Björnsson H, Prata FJ, et al. 2012. Ash
428 generation and distribution from the April-May 2010 eruption of Eyjafjallajökull, Iceland.
429 *Scientific Reports* 2:572; doi:10.1038/srep00572.
- 430 Hansell A, Oppenheimer C. 2004. Health hazards from volcanic gases: a systematic literature review.
431 *Arch Environ Health* 59: 628–639.
- 432 Ilyinskaya E, Schmidt A, Mather TA, Pope FD, Witham C, Baxter P, et al. 2017. Understanding the
433 environmental impacts of large fissure eruptions: Aerosol and gas emissions from the 2014–
434 2015 Holuhraun eruption (Iceland). *Earth and Planetary Science Letters* 472:309–322;
435 doi:10.1016/j.epsl.2017.05.025.
- 436 Ishigami A, Kikuchi Y, Iwasawa S, Nishiwaki Y, Takebayashi T, Tanaka S, et al. 2008. Volcanic sulfur
437 dioxide and acute respiratory symptoms on Miyakejima island. *Occupational and*
438 *Environmental Medicine* 65:701–707; doi:10.1136/oem.2007.033456.
- 439 IVHHN.ORG. Available: <http://www.ivhhn.org/> [accessed 13 December 2011].
- 440 Iwasawa S, Michikawa T, Nakano M, Nishiwaki Y, Tsuboi T, Tanaka S, et al. 2009. Effects of SO₂ on
441 the Respiratory Systems of Child Miyakejima Residents Nearly 2 Years after Returning to the
442 Island. *Epidemiology* 20: S112–S113.
- 443 Iwasawa S, Michikawa T, Nakano M, Nishiwaki Y, Tsuboi T, Tanaka S, et al. 2010. [Nine-month
444 observation of effects of SO₂ on the respiratory system in child Miyakejima citizens]. *Nihon*
445 *Koshu Eisei Zasshi* 57: 39–43.
- 446 Kochi T, Iwasawa S, Nakano M, Tsuboi T, Tanaka S, Kitamura H, et al. 2017. Influence of sulfur
447 dioxide on the respiratory system of Miyakejima adult residents 6 years after returning to the
448 island. *Journal of Occupational Health* 59:313–326; doi:10.1539/joh.16-0256-OA.
- 449 Li R, Jiang N, Liu Q, Huang J, Guo X, Liu F, et al. 2017. Impact of Air Pollutants on Outpatient Visits
450 for Acute Respiratory Outcomes. *Int J Environ Res Public Health* 14;
451 doi:10.3390/ijerph14010047.
- 452 Longo BM. 2013. Adverse Health Effects Associated with Increased Activity at Kīlauea Volcano: A
453 Repeated Population-Based Survey. *ISRN Public Health* 2013:1–10;
454 doi:10.1155/2013/475962.
- 455 Longo BM, Rossignol A, Green JB. 2008. Cardiorespiratory health effects associated with sulphurous
456 volcanic air pollution. *Public Health* 122:809–820; doi:10.1016/j.puhe.2007.09.017.
- 457 Longo BM, Yang W. 2008. Acute bronchitis and volcanic air pollution: a community-based cohort
458 study at Kilauea Volcano, Hawai'i, USA. *J Toxicol Environ Health Part A* 71:1565–1571;
459 doi:10.1080/15287390802414117.
- 460 Longo BM, Yang W, Green JB, Crosby FL, Crosby VL. 2010. Acute health effects associated with
461 exposure to volcanic air pollution (vog) from increased activity at Kilauea Volcano in 2008. *J*
462 *Toxicol Environ Health Part A* 73:1370–1381; doi:10.1080/15287394.2010.497440.
- 463 Menichini F, Mudu P. 2010. Drug consumption and air pollution: an overview. *Pharmacoepidem Dr S*
464 19:1300–1315; doi:[10.1002/pds.2033](https://doi.org/10.1002/pds.2033).

- 465 Naureckas ET, Dukic V, Bao X, Rathouz P. 2005. Short-acting beta-agonist prescription fills as a
466 marker for asthma morbidity. *Chest* 128:602–8; doi:128/2/602.
- 467 Nowak D, Jörres R, Berger J, Claussen M, Magnussen H. 1997. Airway Responsiveness to Sulfur
468 Dioxide in an Adult Population Sample. *Am J Respir Crit Care Med* 156:1151–1156;
469 doi:10.1164/ajrccm.156.4.9607025.
- 470 Dominici F, McDermott A, Zeger SL, Samet JM. 2002. On the Use of Generalized Additive Models
471 in Time-Series Studies of Air Pollution and Health. *Am J Epidemiol* 156:193–203;
472 doi:[10.1093/aje/kwf062](https://doi.org/10.1093/aje/kwf062).
- 473 Peng RD, Dominici F. 2008. *Statistical methods for environmental epidemiology with R - A case study*
474 *in Air pollution and Health*. Springer:New York. Sigurgeirsdóttir S, Waagfjord J, Maresso A.
475 2014. *Iceland - Health Systems in Transition*. WHO:Copenhagen.
- 476 Chief Epidemiologist. 2018. Reportable diseases (Tilkynningarskyldir sjúkdómar=. Directorate of
477 Health Iceland. Available: [https://www.landlaeknir.is/smit-og-](https://www.landlaeknir.is/smit-og-sottvarnir/smitsjukdomar/tilkynningarskyldir-sjukdomar/)
478 [sottvarnir/smitsjukdomar/tilkynningarskyldir-sjukdomar/](https://www.landlaeknir.is/smit-og-sottvarnir/smitsjukdomar/tilkynningarskyldir-sjukdomar/) [accessed 19 November 2018].
- 479 Thorsteinsson T, Jóhannsson T, Stohl A, Kristiansen NI. 2012. High levels of particulate matter in
480 Iceland due to direct ash emissions by the Eyjafjallajökull eruption and resuspension of
481 deposited ash. *J Geophys Res* 117:B00C05; doi:10.1029/2011JB008756.
- 482 Statistics Iceland. 2017. Population by postal code, sex and age 1998-2017 (Mannfjöldinn eftir
483 póstnúmerum, kyni og aldri 1998-2017). Statistics Iceland. Available:
484 [http://px.hagstofa.is/pxispxis/pxweb/is/Ibuar/Ibuar__mannfjoldi__2_byggdir__Byggdakjarnar](http://px.hagstofa.is/pxispxis/pxweb/is/Ibuar/Ibuar__mannfjoldi__2_byggdir__Byggdakjarnar_hverfi/MAN03200.px/)
485 [hverfi/MAN03200.px/](http://px.hagstofa.is/pxispxis/pxweb/is/Ibuar/Ibuar__mannfjoldi__2_byggdir__Byggdakjarnar_hverfi/MAN03200.px/) [accessed 14 April 2017].
- 486 WHO. 2015a. ICD-10 Version:2010. ICD-10 version:2010. Available:
487 <http://apps.who.int/classifications/icd10/browse/2010/en> [accessed 6 February 2015].
- 488 WHO. 2007. WHO Air quality guidelines for particulate matter, ozone, nitrogen dioxide and sulfur
489 dioxide. Risk summary assessment.
- 490 WHO. 2015b. WHOCC - ATC/DDD Index. ATC/DDD Index 2015. Available: <http://www.whocc.no/>

491 **Figure legends**

492 Figure 1 The Icelandic capital region with eruption site indicated on the inset map.

493

494 Figure 2 Respiratory health outcomes during the exposed period July to December 2014 (solid lines)
495 and the unexposed previous years 2010-2013 (broken lines) for Capital area anti-asthma medication
496 dispensing (top), primary care contacts (middle) and hospital emergency department visits (bottom) for
497 respiratory diseases as 7-day running means. SO₂ concentration (3-day running means) indicated in
498 grey, broken vertical line mark the beginning of the eruption, grey vertical line denote first nation-wide
499 SO₂ warning. Grey shaded areas indicate MD strike in PCC and HED.

Table 1 Demographic characteristics of individuals residing in the Icelandic capital who utilized health services for respiratory disease diagnoses before and during the Holuhraun eruption

	Before eruption		During eruption	
	2010-01-01 to 2014-08-30		2014-08-31 to 2014-12-31	
Days	1703		123	
Anti-asthma medication dispensings (AMD)*	n	%	n	%
All	45 473	100%	11 094	100%
Female sex n, (%)	25 608	56.3%	6 552	59.1%
Under 18 years of age	14 144	31.1%	2 415	21.8%
18-64 years of age	24 117	53.0%	5 623	59.7%
65 years of age and older	7 212	15.9%	3 056	27.5%
Primary care MD visits (PCMD) *				
All	106 528	100%	15 806	100%
Female sex n, (%)	59 429	55.7%	9 547	60.4%
Under 18 years of age	31 240	29.3%	4 140	26.2%
18-64 years of age	64 840	60.9%	9839	62.2%
65 years of age and older	10 448	9.8%	1 827	11.6%
Hospital emergency department visits (HED)				
All	19 541	100%	1 932	100%
Female sex (n, %)	9 733	49.8%	1000	51.8%
Under 18 years of age	6 811	34.9%	638	33.0%
18-64 years of age	8 258	42.3%	758	39.2%

Carlsen et al	Holuhraun population study		November 2019	
65 years of age and older	4 472	22.9%	536	27.7%

*Numbers represent number of individuals

Table 2 Daily pollution and respiratory health outcomes in the capital area of Iceland before and after the beginning of Holuhraun eruption.

	Before eruption (1703 days)			During eruption (123 days)			p^*		
Pollutants	Days	with	Mean (SD)	Min-max	Days	with	Mean (SD)	Min-max	
	missing data				missing data				
SO ₂ (µg/m ³)	20		1.4 (1.1)	0.0-20.6	0		35.7 (71.2)	1.3-418.0	<0.001
PM ₁₀ (µg/m ³)	19		20.3 (18.2)	3.8 -315.4	13		17.8 (9.1)	5.7-71.5	0.010
NO ₂ (µg/m ³)	54		15.8 (11.3)	0.0-75.9	0		12.0 (8.2)	0.4-41.0	<0.001
Anti-asthma medication (AMD)	0	n (%)			0	n (%)			
	0		129.4 (100%)	5-715	0		158.4 (100)	22-301	<0.001
All									
Under 18 years of age	0		28.3 (21.9.8%)	0-139	0		33.2 (20.9)	8-68	<0.001
18-64 years of age	0		60.7 (46.9%)	3-386	0		75.2 (47.4)	5-149	<0.001
65 years of age and older	0		40.4 (31.2%)	0-202	0		50.1 (31.6)	0-105	<0.001
Primary care center MD visits (PCC) (lag 0-2)									
All	0		142.2 (100%)	17-325	0		144.8 (100)	41-259	0.6531
Under 18 years of age	0		39.2 (27.6%)	3-136	0		38.0 (26.3)	13-75	0.4019
18-64 years of age	0		85.9 (60.4%)	12-191	0		89.7 (61.9)	24-161	0.2951
65 years of age and older	0		17.1 (12.0%)	0-48	0		17.1 (11.8)	0-42	0.9877
Hospital emergency department visits (HED)									
All	0		18.3 (100%)	1-45	0		17.5 (100)	4-34	0.176
Under 18 years of age	0		5.7 (30.9%)	0-24	0		5.5 (31.6)	0-16	0.640

Carlsen et al	Holuhraun population study			November 2019			
18-64 years of age	0	7.0 (38.2%)	0-24	0	6.7 (38.0)	1-14	0.269
65 years of age and older	0	5.7 (31.0%)	0-19	0	5.3 (30.4)	0-13	0.198

*from a *t*-test of means.

Table 3 Percent excess risk associated with daily SO₂ exposure at lag 0-2 (both as a continuous variable and as an indicator for days with pollution levels above the air quality guideline value) and changes in respiratory health outcomes in the capital area of Iceland

	SO ₂ (per 10 µg/m ³)		SO ₂ levels >125 µg/m ³	
	%	95% CI	%	95% CI
Asthma medication (AMD)				
All	1.05%	0.48 – 1.62%	13.5%	5.3 – 21.7%
Children 0-17	1.51%	0.63 – 2.40%	20.4%	8.0 – 32.9%
Adults 18-65	1.01%	0.37 – 1.66%	14.1%	4.8 – 23.4%
Elderly >65	0.77%	0.05 – 1.51%	8.8%	-1.9 – 19.5%
Primary care MD visits (PCMD)				
All	1.52%	1.04 – 2.00%	21.6%	15.1 – 28.6%
Children 0-17	1.31%	0.53 – 2.10%	15.3%	4.4 – 26.2%
Adults 18-65	1.52%	1.01 – 2.04%	24.1%	16.8 – 31.3%
Elderly >65	1.36%	0.44 – 2.28%	15.7%	2.4 – 29.9%
Hospital Emergency Department (HED)				
All	1.12%	0.19 – 2.05%	11.2%	-1.64 – 24.0%
Children 0-17	1.02%	-0.68 – 2.74%	5.4%	-19.14 – 30.0%
Adults 18-65	1.18%	-0.25 – 2.63%	6.8%	-13.44 – 27.1%
Elderly >65	1.54%	0.02 – 3.07%	26.3%	5.56 – 47.0%

All models are adjusted for season, time trend, day of week, odd holidays, the outcome at lag 1, temperature, relative humidity, NO₂, PM₁₀ at the same lags as SO₂. n=1705.

Table 4 Percent excess risk associated with daily SO₂ exposure (both as a continuous variable and as an indicator for days with pollution levels above the air quality guideline value) and changes in respiratory health in diagnosis subcategories in primary care and hospital emergency departments in the capital area of Iceland

	Mean (SD)	SO ₂ (per 10 µg/m ³)*		SO ₂ levels >125 SO ₂ µg/m ³	
		%	95% CI	%	95% CI
Primary care MD visits (PCMD) (lag 0-2) †					
Respiratory infections †	108.6 (46.2)	1.35%	0.80 – 1.89%	19.0%	10.5 – 28.1%
Asthma and COPD (J44-45)	15.6 (9.6)	2.48%	1.57 – 3.39%	34.3%	18.5 – 52.2%
Hospital emergency department visits (HED) (lag 0-2)					
Respiratory infections †	9.3 (4.3)	1.29%	0.07 – 2.51%	11.2%	-43.7 – 31.0%
Asthma and COPD (J44-45)	4.3 (2.7)	0.90%	-0.82 – 2.64%	4.0%	-17.9 – 31.8%

* Adjusted for season (spline), time trend (spline), day of week, odd holidays, the outcome at lag 1, temperature, relative humidity, NO₂, PM₁₀ at the same lags as SO₂. † ICD codes starting with J0x, J1x, and J2x.

H Hospital
M Measuring station

Seltjarnarneskaupstaður

Reykjavík

H

M

Fossvogur

H

Kópavogur

Ellisáardalur

Álftanes

Bessastaðir

Garðabær

Hafnarfjörður

Geldinganes

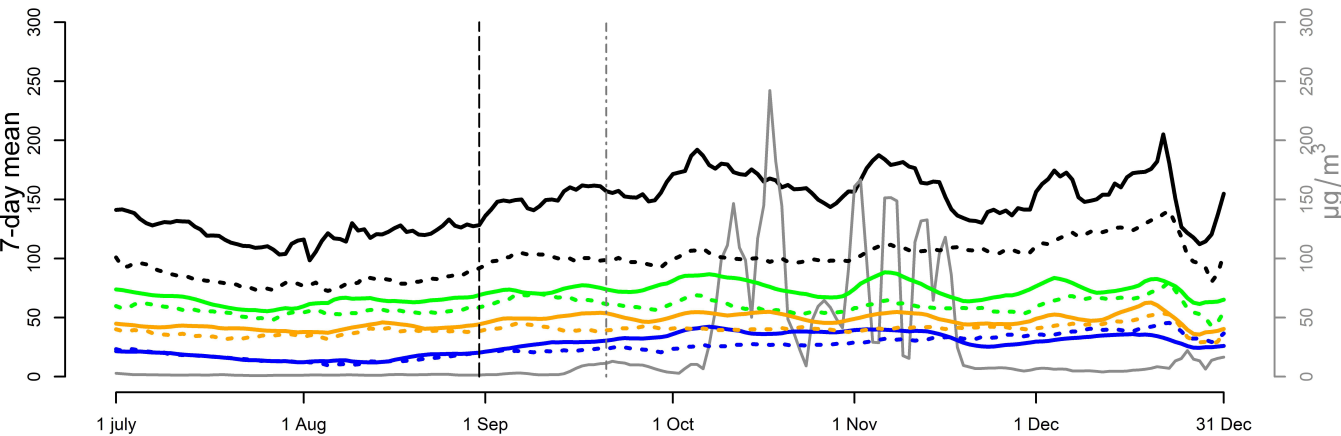
Viðey

Gufunes

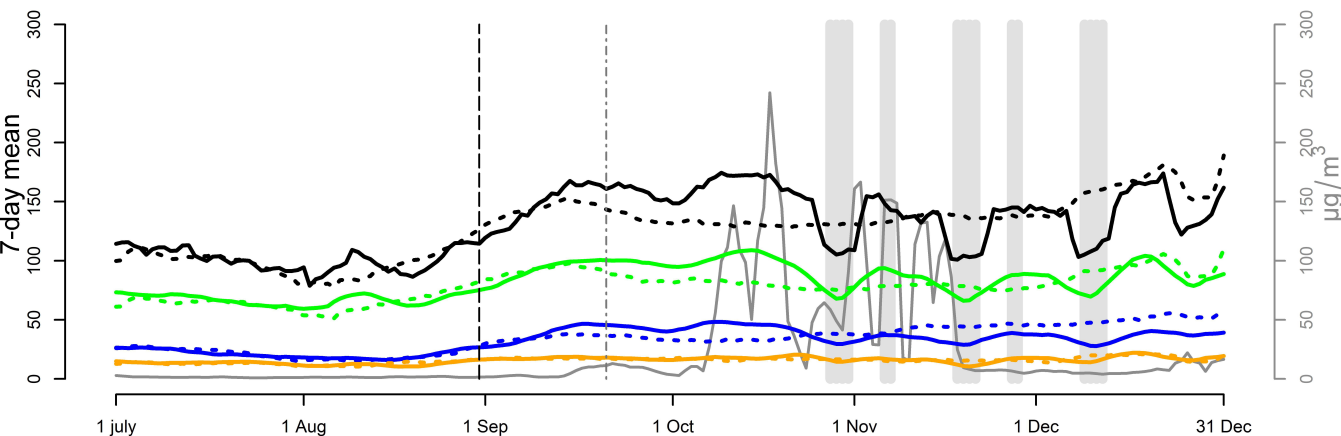
Alafoss
Mosfellsbær
Lágafell



Asthma medication dispensing



Primary Care



Hospital Emergency Department

