

Adopting a new model of care for treating patients with chronic limb threatening ischaemia: early results of a vascular limb salvage clinic

A.T.O. Nickinson<sup>1, 2</sup>, J. Dimitrova<sup>2</sup>, L. Rate<sup>2</sup>, S. Dubkova<sup>2</sup>, H. Lines<sup>2</sup>, L.J. Gray<sup>3</sup>, J.S.M. Houghton<sup>1,2</sup>, S. Nduwayo<sup>1,2</sup>, T. Payne<sup>1</sup>, R.D. Sayers<sup>1,2</sup>, R.S.M. Davies<sup>2</sup>

1. Department of Cardiovascular Sciences, University of Leicester, Leicester, UK, LE3 9QP
2. Leicester Vascular Institute, University Hospitals of Leicester NHS Trust, Leicester, UK, LE3 9QP
3. Department of Health Sciences, University of Leicester, Leicester, UK

Corresponding author: Mr A. Nickinson ([an290@leicester.ac.uk](mailto:an290@leicester.ac.uk), @AndrewNickinson), Department of Cardiovascular Sciences, University of Leicester, Glenfield Hospital, Groby Road, LE3 9QP, UK

**Vascular Society 2019**

Original article

Keywords: peripheral arterial disease, limb salvage, amputation, time-to-treatment

*Previous communication: Presented as an oral presentation at the British Society of Endovascular Therapy (BSET) 2019 Annual Conference (Wotton-under-Edge, United Kingdom, 27<sup>th</sup>-28<sup>th</sup> June 2019) and awarded the 'BSET Peripheral Prize'. Presented as an oral presentation in the 'PAD Scientific Session' at the 33<sup>rd</sup> European Society of Vascular Surgery (ESVS) Annual Meeting (Hamburg, Germany, 24<sup>th</sup>-27<sup>th</sup> September 2019). Accepted*

*for oral presentation at the Vascular Society of Great Britain and Ireland's (VSGBI) 2019 Annual Scientific Meeting (Manchester, United Kingdom, 27<sup>th</sup>-29<sup>th</sup> November 2019)*

## Funding

ATON, JD, LR, SD, HL, JSMH, SN and TP are funded through the George Davies Charitable Trust (Registered Charity Number: 1034818). RDS is part funded through this Trust. The funders had no role in the design and conduct of the study, the collection, analysis, and interpretation of the data, or the preparation, review, or approval of the manuscript.

## Abstract

### Background

Vascular limb salvage services can potentially improve outcomes for patients with chronic limb threatening ischaemia (CLTI) and/or diabetic foot ulceration (DFU). This study aims to evaluate the early outcomes for a vascular limb salvage (VaLS) clinic and investigate times-to-treatment.

### Methods

A retrospective analysis involving all patients diagnosed with CLTI/DFU within the VaLS clinic from February 2018-February 2019 was undertaken. Data were compared to two comparator cohorts; patients managed prior to the clinic, between May 2017-February 2018 (Pre-Clinic' (PC)), and patients managed outside of clinic, between February 2018-February 2019 ('Alternative Pathways' (AP)). Major amputation at 12 months was the primary outcome. Kaplan-Meier survival analysis and adjusted Cox's proportional hazard models were utilised to compare outcomes.

### Results

Six-hundred and forty-six patients (VaLS=200, PC=252, AP=194) were included (median age=73 years, median follow-up=365 days). Within the VaLS clinic, patients underwent assessment within a median of 2.1[IQR 1.3-3.1] days from referral. No differences in median time from assessment to treatment were identified (VaLS=6.1[3.9-11.1] vs. AP=5.7[2.6-12.9] days,  $p=.394$ ; VaLS vs. PC=6.1[2.8-22.8] days,  $p=.888$ ). The VaLS cohort had a significantly lower rate of major amputation at 12 months (9.5%) compared to both the AP (19.6%, aHR

0.42, 95% CI 0.24-0.74,  $p=.003$ ) and the PC (19.4%; aHR 0.45, 95% CI 0.27-0.78,  $p=.004$ ) cohorts, after adjustment for potential confounding.

### Conclusions

A limb salvage clinic can help reduce the rate of major amputation and provides a model which delivers timely vascular assessment. Whilst early outcomes are promising, further evaluation is required to assess longer-term outcomes and reduce time-to-treatment.

## Introduction

Despite efforts to improve the care given to patients with chronic limb threatening ischaemia (CLTI) comparatively little attention has been paid to evolving the clinical pathways through which patients are managed. The provision and focus on multi-disciplinary team (MDT) working remains one of the biggest and most beneficial changes in this area, particularly for patients with neuro-ischaemic diabetic foot wounds.<sup>1, 2</sup> Even in the age of MDT working however, lengthy time delays in the management of both CLTI and diabetic foot ulceration (DFU) remain, with these delays having detrimental effects on patient outcomes.<sup>3</sup> Reasons cited for these delays include difficulties accessing specialist vascular services by ‘community’ and ‘non-specialist’ healthcare professionals, along with unnecessary assessment by ‘non-specialist’ professionals prior to referral.<sup>4-6</sup>

In an attempt to help improve care and reduce rates of major amputation, the Vascular Society of Great Britain and Ireland (VSGBI) recently published its ‘Peripheral Arterial Disease Quality Improvement Framework’ (PAD QIF), which for the first time stipulates target times for the assessment and treatment of patients with CLTI (Figure 1).<sup>7</sup> Whilst the ambition of these targets is laudable, they are by the VSGBI’s own description “deliberately challenging” and as of yet it remains unclear how hospitals will achieve compliance.<sup>7</sup>

Specialist vascular limb salvage services are one model of care which potentially provide a solution to these challenges. Although services can take different forms (reflecting the diverse nature of healthcare systems), at their core they provide rapid-access to specialist vascular assessment and revascularisation of an ischaemic limb, along with emergency debridement of necrosis and drainage of infection.<sup>8-10</sup> In February 2018, the Leicester Vascular Institute in the United Kingdom opened a vascular limb salvage (VaLS) clinic to help improve amputation outcomes for patients with CLTI.

To-date, examples of these services are highly limited and predominantly focus on the care of patients with DFU.<sup>11-21</sup> Furthermore, no studies have investigated the effect of limb salvage services on times-to-treatment. The aims of this study are therefore to, a) describe the service provided by the VaLS clinic, b) evaluate the early (12-months) limb salvage outcomes for patients managed within the clinic's first year of operation and compare these outcomes to a group of controls, and c) investigate the effect of limb salvage services on times-to-treatment.

## Methodology

### Setting

Prior to the inception of the VaLS clinic, patients with CLTI were managed through the traditional in/outpatient model of care. Outpatient pathways facilitated the initial management of patients with rest pain and/or dry necrosis, with formal written referrals required from community/non-specialist healthcare professionals. In many cases patients were subsequently admitted to the vascular ward to expedite treatment. In cases of suppurative infection, wet gangrene or sepsis, patients were admitted directly to the Leicester Vascular Institute as emergent cases to facilitate treatment. All patients had access to lower limb arterial duplex ultrasonography (+/- computerised tomography angiography [CTA]) with subsequent decisions on treatment discussed in weekly MDT meetings. In May 2017, the department enacted a policy to lead the inpatient care of patients with acute diabetic foot complications (excluding acute Charcot arthropathy), irrespective of the presence of PAD.

The VaLS clinic opened on 7<sup>th</sup> February 2018 with the purpose of providing a rapid, open-access, 'one-stop', outpatient-based vascular limb salvage clinic for adult patients with suspected CLTI (including patients with DFUs). The primary aim of the clinic was to reduce time from referral to treatment and improve rates of major amputation.

The clinic is led by two vascular specialist nurses who manage referrals and complete initial patient assessment. A dedicated vascular scientist works within the clinic to perform lower limb arterial duplex ultrasonography. Assessments are available for up to four patients per day, Monday-Friday. The clinic also has access to reserved, fast-track CTA (same-day) and rapid-access to angiography appointments for endovascular revascularisation.

Referral to the clinic is made via email, letter or telephone from any healthcare professional managing a patient. The clinic offers an 'open access' policy and as such clinical suspicion of CLTI is the only referral criterion. Patients may also self-refer directly to the clinic. The clinic was designed to cover the Leicestershire and Rutland region of the United Kingdom (approximately 1.1 million individuals), however referrals from outside this area are also accepted. Prior to opening, a series of regional talks were held to advertise the clinic to both primary and secondary healthcare providers and commissioners. The clinic has also received coverage from regional television press.

On initial consultation patients undergo detailed history and examination, formulated in line with contemporary guidelines.<sup>10</sup> All patients undergo ankle-brachial pressure index (ABPI) measurement, with toe-brachial pressure index (TBPI) undertaken if incompressible. Arterial duplex ultrasonography is subsequently performed when ABPI/TBPI is abnormal or if clinical suspicion of CLTI remains, imaging from the common femoral artery (including aorto-iliac inflow if indicated) to pedal arch outflow. A Society of Vascular Surgery (SVS) Wifii (wound, ischaemia, foot infection)<sup>22</sup> score is also recorded and converted into stages to define the risk of major amputation (stage 1=very low risk, 2=low risk, 3=moderate risk, 4=high risk)

Following initial assessment all patients are reviewed in the same consultation by a consultant vascular surgeon to confirm the diagnosis and instigate a management plan. Endovascular procedures are predominantly undertaken under local anaesthetic on an

expedited outpatient basis, with patients requiring open or hybrid procedures also able to undergo expedited pre-operative assessment and planning as an outpatient. When required, patients can be admitted to facilitate treatment, with all clinical decisions discussed in a daily team meeting involving vascular surgeons, vascular specialist nurses and allied health professionals. In case of complex revascularisation or management decision, patients can be discussed in a weekly MDT meeting (involving vascular surgeons, vascular nurse specialists, interventional radiologists, anaesthetists, and if required, specialists from diabetology and internal medicine). Where appropriate, medical interventions (i.e. antiplatelet and lipid lowering agents) are commenced and education is provided regarding risk factor modification. If no immediate intervention is required, patients are discharged back to the referring clinician or routine follow-up in vascular outpatient clinic is arranged.

Given the operational hours of the clinic, the emergency admission pathway is available for emergency out-of-hours referrals. As part of the continuing development of the service, weekly clinics running in collaboration with diabetology and podiatry will commenced in 2020.

### Study design and population

A retrospective analysis of a prospectively maintained clinic database was undertaken. All consecutive patients diagnosed with CLTI within the VaLS clinic between 7<sup>th</sup> February 2018 (inception date) and 6<sup>th</sup> February 2019 were included. In keeping with local policy, all patients diagnosed with a DFU (irrespective of PAD status) were also included. Patients were defined as having a diagnosis of CLTI based upon clinical history (tissue loss or rest/night pain for  $\geq 2$  weeks) in conjunction with objective evidence of PAD (equivalent of SVS Wifi ischaemia grade  $\geq 1$ ). Patients with diabetes were defined as having a neuropathic DFU if they had ulceration of the foot without objective evidence of PAD and did not undergo revascularisation. These patients formed the 'VaLS Clinic' (VaLS) cohort.



To provide context, patients managed within VaLS were compared to two comparator cohorts. Firstly, all patients managed for CLTI and/or DFU from the time of departmental DFU policy change to the inception of the clinic (1<sup>st</sup> May 2017 - 6<sup>th</sup> February 2018), termed the ‘Pre-Clinic’ (PC) cohort. Secondly, all patients managed after inception of the clinic (7<sup>th</sup> February 2018 - 6<sup>th</sup> February 2019) but via alternative care pathways (e.g. elective vascular outpatient clinic, out of hours admission). This cohort was termed the ‘Alternative Pathways’ (AP) cohort.

Patients for both comparator cohorts were identified from searching Hospital Episode Statistics (HES) data using combinations of ICD-10 (I70.20, I70.21, E10-14; atherosclerosis of lower limbs with/without gangrene, diabetes mellitus) and OPCS-4 (X09.-X12.1; major/minor lower limb amputation) codes. Data were cross-referenced with electronic patient records and a local vascular registry (LVR) database to ensure accuracy and completeness. Patients diagnosed with acute limb ischaemia, venous disease or non-atherosclerotic PAD were excluded.

#### Baseline data and outcomes

Baseline demographics including age, sex and comorbidities (hypertension, ischaemic heart disease, prior stroke/transient ischaemic attack, diabetes mellitus) were collected. Where available, SVS Wifi scores and medications at time of assessment (anti-platelet and lipid lowering medications) were recorded. Referral dates and subsequent procedural data (first attempted revascularisation following assessment, minor and major amputation) and mortality were identified. A major amputation was defined as an amputation proximal to the ankle joint. Patients were followed-up until 12 months post assessment, death or 9<sup>th</sup> October 2019 (whichever occurred first)

Major amputation at 12 months was defined as the primary outcomes of the study. Secondary outcomes were amputation free-survival at 12 months and times-to-treatment (time from assessment to first attempted revascularisation). While referral dates are collected prospectively within the VaLS clinic, this information is not accurately available in retrospect and therefore this was not assessed within the two comparative cohorts.

### Statistical analysis

Continuous baseline variables and times-to-treatment were examined for normality using histogram plots and presented as either means (with standard deviation (SD)) or medians (with interquartile ranges [IQR]). Categorical variables are presented as frequencies (with percentages). Comparison between cohorts was undertaken using Pearson's chi-square, Student's-t or Mann-Whitney U-tests, as appropriate. All analyses were undertaken on a 'per patient' basis, as such patients who underwent multiple assessments were analysed based upon their first clinical assessment, and in the cohort in which this first assessment occurred. Outcomes of major amputation were analysed irrespective the side of amputation.

Both the rate of major amputation and amputation-free survival were compared between the VaLS, and APC and PC cohorts. Further analysis was also undertaken to compare the rates of amputation outcomes of all patients assessed pre- ('2017-18') and post- ('2018-19') inception of the VaLS clinic to evaluate the overall impact of the clinic on the vascular service at the Leicester Vascular Institute.

Kaplan-Meier curves were plotted and cohorts compared using the log-rank test. Cox's proportional hazard models were also utilised to calculate hazard ratios (HR) with 95% confidence intervals (CIs). All baseline characteristics were tested for potential confounding effect on major amputation and amputation-free survival through univariate analysis, with those having a  $p \leq .1$  included in a final adjusted (aHR) model to compare risk of amputation

outcomes between cohorts. All statistical analysis was performed using SPSS v25.0 (IBM Corp., Armonk, USA). P-values  $\leq .05$  were deemed statistically significant.

Approval for this service evaluation was granted by the University Hospital of Leicester NHS Trust's Clinical Audit department (reference 9665).

## Results

### VaLS Clinic

Two-hundred and ninety-four patients (n=299 cases) were referred to the VaLS clinic within its first year of operation, of which 197 (67.0%) patients were diagnosed with CLTI and 25 with a neuropathic DFU (8.5%).

Of those with CLTI/DFU (n=222), 153 (68.9%) patients were male, with a median age of 74.0 [64.0-82.0] years. Complete SVS Wifi scores were recorded in 141 patients, with 67 (47.5%) patients having stage 3 or 4 disease. As expected, referrals from general practice and loco-regional diabetic foot clinics were the leading sources of caseload into the clinic (82.8%). Interestingly, antiplatelet and lipid lowering medications were only prescribed in 93 (47.2%) and 91 (46.2%) patients respectively with CLTI.

Of the 72 patients not diagnosed with CLTI and/or DFU, 63 had no evidence of PAD/DFU and eight had venous disease. One further patient was referred to the clinic but did not attend for assessment. No major amputations were subsequently recorded in these patients.

Outcomes following assessment are shown in Table 1. One-hundred and thirty-nine patients (70.6% of those with CLTI) underwent revascularisation, with an endovascular-first strategy (n=114, 82.0%) being the most common technique utilised. Twenty patients (9.0%) underwent a major amputation during follow-up, of which five occurred in patients not undergoing revascularisation (4=neuropathic DFU, 1=patient refused revascularisation).

Following referral, assessment occurred within a median of 2.1 [1.1-3.1] days and subsequently from assessment on to revascularisation in 6.1 [3.9-11.1] days. Overall, the median time from referral to revascularisation was 8.1 [6.1-14.3] days. In patients with moderate to high risk of amputation (SVS Wifi score  $\geq 3$ ) median time from referral to revascularisation was 8.2 [7.1-13.1] days.

### Amputation outcomes

Four-hundred and seventy-seven consecutive patients were identified in the comparator cohorts (PC= 252, AP= 225 patients), in addition to the 222 patients within the VaLS cohort. Of these, 53 patients underwent assessment in multiple cohorts (VaLS=22 patients, AP=31 patients). Taking account of the cohort in which patients underwent their first assessment, analysis of amputation outcomes was performed on 252 patients within the PC, 194 patients within the AP and 200 patients within the VaLS cohorts. After adjustment for patients undergoing multiple assessment, the final VaLS cohort was comparable to the original cohort of 222 patients (Supplemental Table 1) Median follow-up was 365 [265.5-365] days. Comparison of baseline characteristics between cohorts are shown in Table 2. Of note, a higher proportion of patients within the VaLS cohort were managed for a neuropathic DFU, compared to both comparator cohorts. The higher proportion of patients with a diagnosis of hypertension was also identified between the VaLS and AP cohorts.

Outcomes of each cohort at 12 months are shown in Table 3. No significant differences in revascularisation or minor amputation management strategy were observed between cohorts. At 12 months, patients within the VaLS cohort were observed to have a significantly lower rate of major amputation (9.5%), compared with both AP (19.6%,  $p=.004$ ) and PC (19.4%,  $p=.003$ ) cohorts (Figure 2). This trend continued for the rate of amputation-free survival, with significantly higher rates observed in the VaLS cohort (74.0%) compared to both the AP

(55.2%,  $p < .001$ ) and PC (60.7%,  $p = .003$ ) cohorts (Figure 3). Comparing all patients assessed pre- and post-inception of the VaLS clinic, the rate of major amputation declined since inception of the VaLS clinic (2017-18=19.4%, 2018-19=14.5%,  $p = .096$ ), however the result did not reach the threshold for statistical significance (Figure 4). No difference in the rate of amputation free survival was observed between time points (2017-18=60.7%, 2018-19=64.7%,  $p = .303$ )

Univariate analysis (Supplemental Table 2) identified the baseline characteristics of age, sex (male) and diagnosis (neuropathic DFU) as potentially being associated with risk major amputation at 12 months and therefore these factors were entered into the final adjusted model. Based upon this, the risk of major amputation was significantly lower within the VaLS cohort, compared to both the AP (aHR 0.42, 95% CI 0.24-0.74,  $p = .003$ ) and PC (aHR 0.45, 95% CI 0.27-0.78,  $p = .004$ ) cohorts.

The association between baseline characteristics and risk of amputation-free survival are shown in Supplemental Table 3. The combined risk of amputation or death (amputation-free survival) was also significantly lower within the VaLS cohort compared to both the AP (aHR 0.50, 95% CI 0.36-0.71,  $p < .001$ ) and PC (aHR 0.62, 95% CI 0.44-0.87,  $p = .005$ ) cohorts. Comparing all patients assessed pre- and post-inception of the VaLS clinic, the risk of major amputation at 12 months showed a signal towards benefit since inception of the clinic (aHR 0.74, 95% CI 0.50-1.09,  $p = .122$ ), however the result was not statistically significant. No difference in amputation-free survival was identified (aHR 0.90, 95% CI 0.69-1.16,  $p = .402$ ; risk of amputation or death).

#### Timings – assessment to first attempted revascularisation

Median times from assessment to treatment showed no significant difference between the VaLS, and AP and PC cohorts, although the range of times was smallest in the VaLS cohort (Table 4). Times from referral to assessment were not available for comparison.

## Discussion

This study indicates that the implementation of a novel vascular limb salvage clinic can help reduce the rate of major amputation and improve amputation-free survival. Furthermore, these results demonstrate the ability of the clinic to provide timely vascular assessment and consultant review following referral.

How care is provided to this group of patients is an area of growing importance, particularly in light of the burgeoning prevalence of diabetes mellitus and its complications.<sup>23</sup> The provision of a vascular surgery service, which facilitates prompt assessment and revascularisation is therefore a key aim of any department. Despite this, evidence suggests time delays are common throughout the treatment pathway.<sup>3</sup> While the causes of delays will differ even between individual departments, removing unnecessary barriers between healthcare specialities is appreciated as a key factor in providing timely care.<sup>4,6</sup>

The concept of vascular limb salvage services has grown in prominence over the last decade as a solution to this problem, providing seamless access to specialist vascular assessment, revascularisation and surgical debridement (often referred to as the ‘toe-and-flow’ model).<sup>9,24</sup> The 2019 Global Vascular Guidelines<sup>10</sup> provides further impetus by defining broad criteria for limb salvage ‘centres of excellence’. Within the contemporary literature, examples of services which meet these criteria are limited.<sup>11-21</sup> Furthermore, individual models vary greatly in scope, design and size; from individual ‘hot’ clinics specialising solely in DFUs, to dedicated broad based multi-aetiology wound-care services.<sup>11, 17, 20</sup> Within the United

Kingdom (UK), focussing on new models of care is highly relevant given the particularly challenging time-to-treatment targets recently published within the new VSGBI PAD QIF.<sup>7</sup>

To the best of our knowledge, the Leicester VaLS clinic represents one of the first open-access, outpatient based vascular limb salvage clinics, which principally manages patients with CLTI, within the literature. Of particular benefit, this model of care provides a readily reproducible and achievable limb salvage service, which utilises many existing resources within a vascular department to help expedite the management pathway of patients with limb ischaemia. The resultant streamlined service, particularly establishing rapid-access to vascular assessment, can potentially help to significantly improve amputation outcomes for patients. The experience of the clinic has also shown that having an ‘open-access’ policy does not result in the clinic being overwhelmed by inappropriate referrals.

Whilst early results are encouraging, on-going evaluation of the clinic is required to help overcome current and future challenges. Particular focus is necessary to help bring about further improvement in the times-to-treatment. Average times from assessment to treatment were comparable between the three cohorts, although lower than those reported within similar studies.<sup>25, 26</sup> Therefore, whilst the clinic meets the 14 days PAD QIF target time, in patients with more severe disease (i.e. SVS Wifi stage 3 and 4) it still falls short of the five-day deadline.

This can be interpreted in two ways. Firstly, the ability of the outpatient clinic to achieve comparable treatment times to those managed as inpatient, whilst helping to lower the rate of major amputation is encouraging. This also confers potential financial benefit through reduced use of costly inpatient services. Furthermore, the clinic provides a thorough, outpatient-based vascular assessment and consultant review within just two days of referral.

The comparability of treatment times is however somewhat surprising given the clinic was designed to have access to dedicated radiology appointments for CT imaging and angiography. In part this may reflect current departmental service provision, with the clinic not currently opening at weekends and only emergency revascularisation procedures being performed outside of ‘normal working’ hours. The resultant effect is to potentially delay treatment in a proportion of patients upwards of 48 hours. Given the challenge of meeting the PAD QIF targets, consideration is currently being given to extending the VaLS clinic to a 7-day per week service. Furthermore, providing greater capacity for non-emergency weekend operating, as recommended in the recent speciality ‘Getting It Right First Time’ (GIRFT)<sup>27</sup> report, may help reduce times-to-treatment. This remains challenging however in light of ongoing resource constraints and workforce shortages in the National Health Service.<sup>28</sup>

Other results are also worthy of mention. Interestingly, less than 50% of patients with CLTI within the VaLS cohort had been prescribed anti-platelet or lipid lowering secondary preventative medications at the time of assessment. It has long been established that the medical management of PAD is suboptimal, within both primary and secondary care setting.<sup>29, 30</sup> These prescription rates are comparable to a recent multi-centred, audit of secondary care practice within the UK and further highlight the important need to improve the medical management of patients with CLTI.<sup>31</sup>

The study also identified that a significantly higher proportion of patients within the VaLS cohort were managed for neuropathic DFU, compared to both comparator cohorts. This may reflect the close working relationship between loco-regional diabetic foot services and the VaLS clinic, and an increasing tendency to refer patients to the clinic for vascular assessment who may not otherwise be referred. Furthermore, the relative infancy of the hospital’s DFU policy and low threshold for revascularisation may explain the lower than expected numbers being managed solely for a neuropathic DFU.



### Strengths and limitations

In comparison with similar articles reporting outcomes of limb salvage services, this study has two particular strengths. Unlike many articles, this study provides comparative institutional data in order to provide context to the results and demonstrate benefits to outcomes.<sup>13, 14, 17, 20, 21</sup> This study also provides time-to-event data and is the first to analyse times within treatment pathways.<sup>11, 18</sup>

Limitation however exist. Firstly, there is the potential for selection and performance bias, particularly regarding patients seen within the VaLS clinic. Whilst baseline characteristics and treatment strategies were broadly comparable, there is potential that clinic patients had an intrinsically lower risk of amputation. Likewise, decisions on treatments could have been systematically different, with a higher threshold for amputation taken within the clinic compared to the AP and PC cohorts.

In part this is inherent in any pragmatic analysis of a healthcare service. Although SVS Wifi scores are available for a proportion of patients within the VaLS cohort, this information cannot be accurately derived through retrospective data collection. To help mitigate this, analysis of all patients assessed pre- and post-inception of the clinic was undertaken, however results must be interpreted with some degree of caution.

Secondly, the study relied on the accuracy and completeness of HES data and electronic patient records. This was especially important in the context of case ascertainment, identification of patient characteristics and establishing outcomes. Whilst broadly validated, HES data is not without drawbacks including variation in coding between institutions and missing data.<sup>32</sup> Furthermore, electronic records do not accurately store referral details or medication use at the time of assessment, thus preventing the comparison of these factors. To some extent these effects were moderated by cross checking data with LVR records, however

the inability to compare referral times limits the study's capacity to show definitive improvement since inception of the clinic.

Lastly is the issue of patient cross-over between cohorts. Whilst not unexpected given the nature of CLTI and the high rate of re-intervention associated with the condition, this cross-over is problematic.<sup>33</sup> To help manage this, outcomes were assessed on an 'intention-to-treat' basis, with patients analysed within the cohort of their first assessment. Therefore, this has the potential of biasing the results in favour of more contemporary patients. The effects of this could have been reduced by selecting comparative cases (namely the PC cohort) from a more distant time-point, however given the major changes to local policies before May 2017, this would have affected the comparability of the cohorts.

## Conclusions

The inception of a limb salvage clinic can help to reduce the rate of major amputation for patients with CLTI and provides a model of care which can deliver timely specialist vascular assessment. Whilst early outcomes are promising, further evaluation is required to assess longer-term outcomes and continue to reduce times-to-treatment.

## Acknowledgements

The authors would like to thank George Davies and the George Davies Charitable Trust for the generous charitable donation which funded this work. This work was not pre-registered with an independent, institutional registry.

## Competing interests

RSMD has received personal fees for speaking from Cook Medical and Gore, and has received sponsorship from TerumoAortic to run educational workshops. These are outside of the submitted work. The other authors have nothing to declare.

## References

1. Chung J, Modrall JG, Ahn C, Lavery LA, Valentine RJ. Multidisciplinary care improves amputation-free survival in patients with chronic critical limb ischemia. *J Vasc Endovasc Surg* 2015;**61**(1): 162-169.e161.
2. Buggy A, Moore Z. The impact of the multidisciplinary team in the management of individuals with diabetic foot ulcers: a systematic review. *J Wound Care* 2017;**26**(6): 324-339.
3. Nickinson A, Bridgwood B, Houghton JSM, Nduwayo S, Pepper C, Payne T, Bown MJ, Davies RSM, Sayers RD. A systematic review investigating the identification, causes and outcomes of delays in the management of chronic limb threatening ischaemia and diabetic foot ulceration. *J Vasc Endovasc Surg* 2019; S0741-5214(19)32170-6. doi: 10.1016/j.jvs.2019.08.229. [Epub ahead of print]
4. Normahani P, Mustafa C, Standfield NJ, Duguid C, Fox M, Jaffer U. Management of peripheral arterial disease in diabetes: a national survey of podiatry practice in the United Kingdom. *J Foot Ankle Res* 2018;**11**: 29.
5. Sanders AP, Stoeldraaijers LG, Pero MW, Hermkes PJ, Carolina RC, Elders PJ. Patient and professional delay in the referral trajectory of patients with diabetic foot ulcers. *Diabetes Res Clin Pract* 2013;**102**: 105-111.
6. Pankhurst CJW, Edmonds ME. Barriers to foot care in patients with diabetes as identified by healthcare professionals. *Diabetic Medicine* 2018;**35**: 1072-1077.
7. Vascular Society of Great Britain and Ireland. A best practice clinical care pathway for peripheral arterial disease. London, 2019.

8. Rogers LC, Andros G, Caporusso J, Harkless LB, Mills JL, Sr., Armstrong DG. Toe and flow: Essential components and structure of the amputation prevention team. *J Vasc Endovasc Surg* 2010;**52**(3): 23S-27S.
9. Fitzgerald RH, Mills JL, Joseph W, Armstrong DG. The diabetic rapid response acute foot team: 7 essential skills for targeted limb salvage. *Eplasty* 2009;**9**: e15-e15.
10. Conte MS, Bradbury AW, Kolh P, White JV, Dick F, Fitridge R, Mills JL, Ricco J-B, Suresh KR, Murad MH, Forbes TL, AbuRahma A, Anankwah K, Barshes N, Bush R, Dalman RL, Davies M, Farber A, Hingorani A, Malas M, Mondy JS, Rzucidlo E, Schermerhorn M, de Borst GJ, van den Berg J, Bastos Goncalves F, Kakkos S, Koncar I, Lindholt J, Sillesen H, Muñoz A, Thiruvengadam V, Björck M, Subramaniam P, Rajaruthnam P, Bedi V, Mulaudzi T, Komori K, Vidyasagan T, Azuma N, Nicholas Wolfe JH, Wolfe J, Jawien A, Mutirangura P, Bourke B, Jawien A, Balcazar A, Paolini JE, Cavaye D, de Luccia N, Diamant M. Global vascular guidelines on the management of chronic limb-threatening ischemia. *J Vasc Endovasc Surg* 2019;**69**(6, Supplement): 3S-125S.e140.
11. Flores AM, Mell MW, Dalman RL, Chandra V. Benefit of multidisciplinary wound care center on the volume and outcomes of a vascular surgery practice. *J Vasc Endovasc Surg* 2019.
12. Williams DT, Powell-Chandler A, Qureshi Q, Zaidi A, Whitaker CJ. Improved limb salvage for patients with vascular disease and tissue loss associated with new model of provision targeted at the diabetic foot. *Diabetes Res Clin Pract* 2018;**135**: 50-57.
13. Sanguily J, Martinsen B, Igyarto Z, Pham M. Reducing Amputation Rates in Critical Limb Ischemia Patients Via a Limb Salvage Program: A Retrospective Analysis. *Vascular Disease Management* 2016;**13**(5): E112-E119.

14. Vartanian SM, Robinson KD, Ofili K, Eichler CM, Hiramoto JS, Reyzelman AM, Conte MS. Outcomes of Neuroischemic Wounds Treated by a Multidisciplinary Amputation Prevention Service. *Annals of Vascular Surgery* 2015;**29**(3): 534-542.
15. Hsu C-R, Chang C-C, Chen Y-T, Lin W-N, Chen M-Y. Organization of wound healing services: The impact on lowering the diabetes foot amputation rate in a ten-year review and the importance of early debridement. *Diabetes Res Clin Pract* 2015;**109**(1): 77-84.
16. Armstrong DG, Bharara M, White M, Lepow B, Bhatnagar S, Fisher T, Kimbriel HR, Walters J, Goshima KR, Hughes J, Mills JL. The impact and outcomes of establishing an integrated interdisciplinary surgical team to care for the diabetic foot. *Diabetes/Metabolism Research and Reviews* 2012;**28**(6): 514-518.
17. Zayed H, Halawa M, Maillardet L, Sidhu P, Edmonds M, Rashid H. Improving limb salvage rate in diabetic patients with critical leg ischaemia using a multidisciplinary approach. *International Journal of Clinical Practice* 2009;**63**(6): 855-858.
18. Alexandrescu V, Vincent G, Coessens V, Guillaumie B, Ngongang C, Hubermont G, Philips Y, Azdad K, Ledent G, De Marre C, Macoir C. Why a multidisciplinary team may represent a key factor for lowering the inferior limb loss rate in diabetic neuro-ischaemic wounds: Application in a departmental institution. *Acta Chirurgica Belgica* 2009;**109**(6): 694-700.
19. Driver VR, Madsen J, Goodman RA. Reducing Amputation Rates in Patients With Diabetes at a Military Medical Center. *Diabetes Care* 2005;**28**(2): 248.
20. Gottrup F, Holstein P, Jørgensen B, Lohmann M, Karlsmark T. A new concept of a multidisciplinary wound healing center and a national expert function of wound healing. *Archives of Surgery* 2001;**136**(7): 765-772.

21. Van Gils CC, Wheeler LA, Mellstrom M, Brinton EA, Mason S, Wheeler CG. Amputation prevention by vascular surgery and podiatry collaboration in high-risk diabetic and nondiabetic patients. The Operation Desert Foot experience. *Diabetes Care* 1999;**22**(5): 678.
22. Mills JL, Sr., Conte MS, Armstrong DG, Pomposelli FB, Schanzer A, Sidawy AN, Andros G. The Society for Vascular Surgery Lower Extremity Threatened Limb Classification System: Risk stratification based on Wound, Ischemia, and foot Infection (WIFI). *J Vasc Endovasc Surg* 2014;**59**(1): 220-234.e222.
23. Harding JL, Pavkov ME, Magliano DJ, Shaw JE, Gregg EW. Global trends in diabetes complications: a review of current evidence. *Diabetologia* 2019;**62**(1): 3-16.
24. Rogers LC, Andros G, Caporusso J, Harkless LB, Mills Sr JL, Armstrong DG. Toe and flow: Essential components and structure of the amputation prevention team. *J Vasc Endovasc Surg* 2010;**52**(3 SUPPL.): 23S-27S.
25. Ndosu M, Wright-Hughes A, Brown S, Backhouse M, Lipsky BA, Bhogal M, Reynolds C, Vowden P, Jude EB, Nixon J, Nelson EA. Prognosis of the infected diabetic foot ulcer: a 12-month prospective observational study. *Diabetic Medicine* 2018;**35**: 78-88.
26. Noronen K, Venermo M, Saarinen E, Alback A. Analysis of the Elective Treatment Process for Critical Limb Ischaemia with Tissue Loss: Diabetic Patients Require Rapid Revascularisation. *Eur J Vasc Endovasc Surg* 2017;**53**: 206-213.
27. NHS Improvement. Vascular Surgery: GIRFT Programme National Specialty Report. London, 2018.
28. The Royal College of Radiologists. Clinical radiology UK workforce census report 2018. London, 2019.

29. Hirsch AT, Criqui MH, Treat-Jacobson D, Regensteiner JG, Creager MA, Olin JW, Krook SH, Hunninghake DB, Comerota AJ, Walsh ME, McDermott MM, Hiatt WR. Peripheral Arterial Disease Detection, Awareness, and Treatment in Primary Care. *JAMA* 2001;**286**(11): 1317-1324.
30. Subherwal S, Patel Manesh R, Kober L, Peterson Eric D, Jones William S, Gislason Gunnar H, Berger J, Torp-Pedersen C, Fosbol Emil L. Missed Opportunities. *Circulation* 2012;**126**(11): 1345-1354.
31. Saratzis A, Jaspers NEM, Gwilym B, Thomas O, Tsui A, Lefroy R, Parks M, Htun V, Mera Z, Thatcher A, Bosanquet D, Forsythe R, Benson R, Dattani N, Dovell G, Lane T, Shalhoub J, Sidloff D, Visseren FLJ, Dorresteijn JAN, Richards T, Vascular Collaborators ERN. Observational study of the medical management of patients with peripheral artery disease. *BJS* 2019;**106**(9): 1168-1177.
32. Herbert A, Wijlaars L, Zylbersztejn A, Cromwell D, Hardelid P. Data Resource Profile: Hospital Episode Statistics Admitted Patient Care (HES APC). *Int J Epidemiol* 2017;**46**(4): 1093-1093i.
33. Darling JD, McCallum JC, Soden PA, Korepta L, Guzman RJ, Wyers MC, Hamdan AD, Schermerhorn ML. Results for primary bypass versus primary angioplasty/stent for lower extremity chronic limb-threatening ischemia. *J Vasc Endovasc Surg* 2017;**66**(2): 466-475.



## Figure Legends

Figure 1 - Vascular Society of Great Britain and Ireland's Peripheral Arterial Disease Quality Improvement Framework time-to-treatment targets

*'Admitted Patient' and 'Non-Admitted Patient' pathways within the Vascular Society of Great Britain and Ireland's 'A best practice clinical care pathway for peripheral arterial disease' (London, 2019).<sup>7</sup> Reproduced with kind permission.*

Figure 2 - Cumulative rate of major amputation at 12 months: comparison of cohorts

Figure 3 – Cumulative rate of amputation-free survival at 12 months: comparison of cohorts

Figure 4 – Cumulative rate of major amputation at 12 months: comparison of pre- (2017-18) vs post- inception (2018-19) of the VaLS clinic

## Tables

Table 1 – 12-month outcomes of all patients with CLTI/DFU assessed within the VaLS clinic since inception

<b>Outcome</b>	<b>n</b>	<b>%</b>
<hr/>		
Outcomes of patients with CLTI*		
Revascularisation	139	74.7
Conservative management	72	38.7
Palliation	4	2.2
Patient Refused	7	3.8
First revascularisation strategy		
Endovascular	114	82.0
Open surgery	14	10.1
Hybrid	11	7.9
Minor amputation		
Amputation	15	6.8
Debridement	9	4.1
Both	1	0.5
Major amputation		
Below knee	13	5.9
Through knee	0	0.0
Above knee	7	3.2
Mortality	40	18.0

\*n=197 patients

Table 2 – Baseline characteristics (patients with CLTI/DFU)

	VaLS Clinic (VaLS) (n=200 patients)		Alternative Pathways (AP) (n=194 patients)		Pre-Clinic (PC) (n=252 patients)		VaLS vs. AP	VaLS vs. PC
	n	%	n	%	n	%	p	p
Age (median [IQR])	73.0 [63.0-82.0]		73.0 [62.8-83.0]		73.0 [65.0-81.0]		.985*	.903*
Male	136	68.0	142	73.2	169	67.1	.258	.841
Female	64	32.0	52	26.8	83	32.9		
Neuropathic DFU	25	12.5	7	3.6	16	6.3	<b>.001</b>	<b>.024</b>
Comorbidities								
Diabetes (Type 1/2)	124	62.0	110	56.7	145	57.5	.284	.337
IHD	46	23.0	47	24.2	70	27.8	.777	.249
Hypertension	118	59.0	87	44.8	144	57.1	<b>.005</b>	.689
Previous stroke/TIA	20	10.0	27	13.9	38	15.1	.230	.109

\*Mann-Whitney U Test

DFU – Diabetic foot ulcer

IHD – Ischaemic heart disease

IQR - Interquartile range

TIA – Transient ischaemic attack

Table 3 – Comparison of 12-month outcomes between cohorts

	VaLS Clinic (VaLS) (n=200 patients)		Alternative Pathways (AP) (n=194 patients)		Pre-Clinic (PC) (n=252 patients)		VaLS vs. AP	VaLS vs. PC
	n	%	n	%	n	%	p*	p*
First revascularisation strategy <sup>#</sup>								
Endovascular	96	54.9	103	55.1	143	60.6	.999	.244
Open	13	7.4	19	10.2	21	8.9	.359	.590
Hybrid	11	6.3	11	5.9	22	9.3	.862	.264
Conservative management	48 <sup>†</sup>	27.3	54	28.9	50	21.2	.764	.142
Minor amputation	13	6.5	20	10.3	28	11.1	.217	.090
Major amputation	19	9.5	38	19.6	49	19.4	<b>.004</b>	<b>.003</b>
Amputation-free survival	148	74.0	107	55.2	153	60.7	<b>&lt;.001</b>	<b>.003</b>
Mortality	40	20.0	55	28.4	65	25.8	.053	.147

\* Pearson's chi-square test

<sup>#</sup> % patients with CLTI (VaLS=175, AP=187, PC=236 patients)

<sup>†</sup> Excludes patients who refused intervention (n=7)

Table 4 – Comparison of times from assessment to revascularisation

<b>Cohort</b>	<b>Time (days)</b>	<b>IQR</b>	<b>p</b>
VaLS Clinic (VaLS)	6.1	3.9-11.1	
Alternative Pathways (AP)	5.7	2.6-12.9	.394*
Pre-Clinic (PC)	6.1	2.8-22.8	.888 <sup>†</sup>

\* VaLS vs AP

<sup>†</sup> VaLS vs PC

## Supplemental Tables

Table 1 – Comparison of baseline characteristics between VaLS cohorts after removal of patients who underwent multiple assessment

	<b>Before removal of patients undergoing multiple assessments (n=222 patients)</b>		<b>After removal of patients undergoing multiple assessment (n=200 patients)</b>		<b>p</b>
	<b>n</b>	<b>%</b>	<b>n</b>	<b>%</b>	
Age (median [IQR])	74 [64-82]		73.0 [63.0-82.0]		.803*
Male	153	68.9	136	68.0	.841
Female	69	31.1	64	32.0	
Neuropathic DFU	25	11.3	25	12.5	.699
<b>Comorbidities</b>					
Diabetes (Type 1/2)	138	62.2	124	62.0	.999
IHD	56	25.2	46	23.0	.597
Hypertension	135	60.8	118	59.0	.708
Previous stroke/TIA	25	11.3	20	10.0	.671
<b>Medications on assessment<sup>†</sup></b>					
Anti-platelet	93	47.2	78	44.6	.543
Lipid lowering	91	46.2	77	44.0	.603

\*Mann-Whitney U Test

† Patients with CLTI (Before removal of duplication n=197, after n=175)

Table 2 – Univariate analysis investigating association between baseline characteristics and risk of major amputation at 12 months

<b>Characteristic</b>	<b>HR</b>	<b>95% CI</b>		<b>p</b>
Age (years)*	0.98	0.97	0.99	<b>.016</b>
Sex (male)*	1.48	0.94	2.34	<b>.091</b>
Diabetes mellitus	1.11	0.75	1.64	.595
IHD	1.06	0.69	1.64	.788
Hypertension	0.78	0.53	1.14	.203
Previous stroke/TIA	0.77	0.41	1.44	.410
Diagnosis (Neuropathic DFU vs CLTI)*	1.74	0.93	3.30	<b>.085</b>

\* Characteristics added into final adjusted model

IHD – Ischaemic heart disease

TIA – Transient ischaemic attack



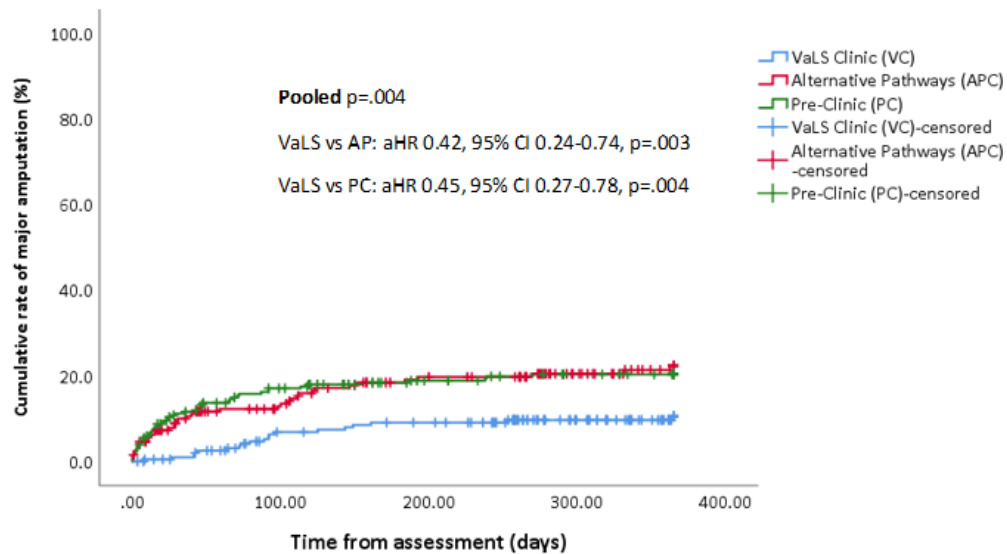
Table 3 - Univariate analysis investigating association between baseline characteristics and the combined risk of major amputation and death (amputation-free survival) at 12 months

<b>Characteristic</b>	<b>HR</b>	<b>95% CI</b>		<b>p</b>
Age (years)*	1.02	1.01	1.03	<b>.002</b>
Sex (male)	1.02	0.78	1.34	.922
Diabetes mellitus	1.16	0.89	1.50	.282
IHD*	1.28	0.97	1.70	<b>.081</b>
Hypertension	1.02	0.79	1.32	.885
Previous stroke/TIA*	1.33	0.94	1.90	<b>.102</b>
Diagnosis (Neuropathic DFU vs CLTI)	1.25	0.78	2.01	.355

\* Characteristics added into final adjusted model

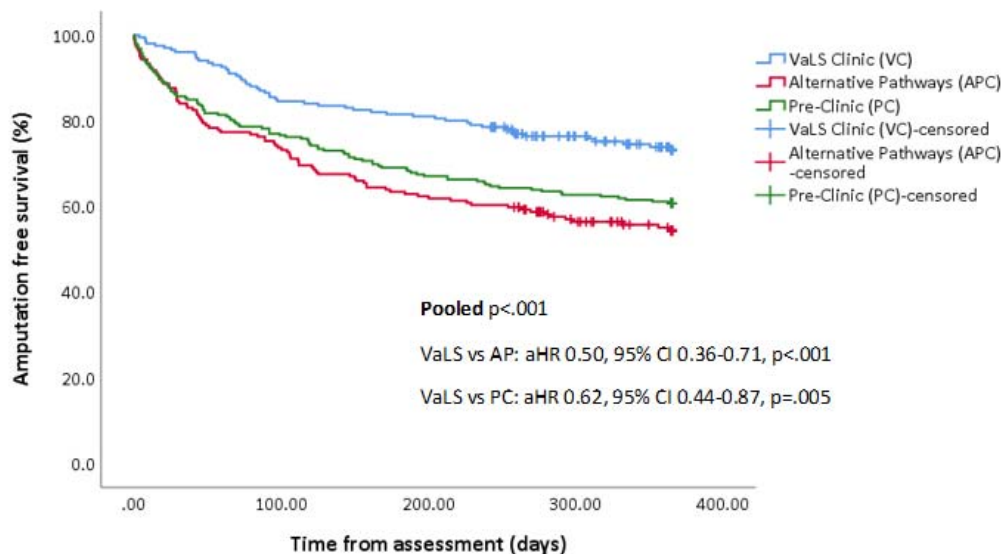


Figure 2



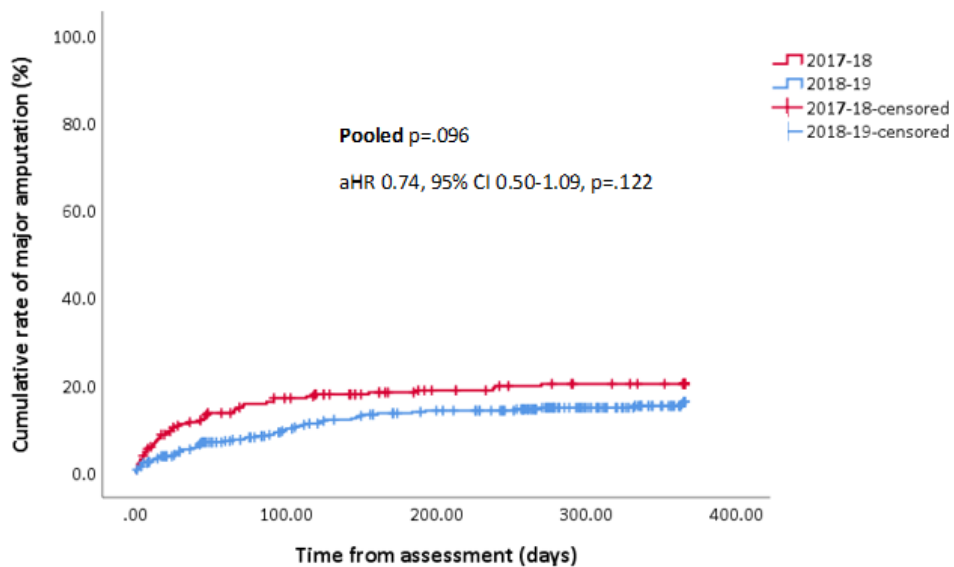
Numbers at risk (SE)	0	6 months	12 months
VaLS	200	163	100 (.023)
AP	194	122	79 (.033)
PC	252	172	153 (.026)

Figure 3



Numbers at risk (SE)	0	6 months	12 months
VaLS	200	163	100 (.032)
AP	194	122	79 (.036)
PC	252	172	153 (.031)

Figure 4



Numbers at risk (SE)	0	6 months	12 months
2017-18	200	172	153 (.026)
2018-19	194	285	179 (.020)