

1 **Title:** Projected Impact of Concurrently Available Long-Acting Injectable and Daily-Oral HIV Pre-Exposure
2 Prophylaxis: A Mathematical Model

3

4 **Running Head:** Projected Impact of Injectable PrEP

5

6 **Authors:** Kevin M. Maloney¹, Adrien Le Guillou^{1,2}, Robert A. Driggers^{1§}, Supriya Sarkar^{1,3}, Emeli J.
7 Anderson¹, Aryn A. Malik^{1,4,5}, Samuel M. Jenness¹

8 ¹Department of Epidemiology, Emory University, Atlanta, GA, USA, 30322

9 ²Department of Research and Public Health, Reims Teaching Hospitals, Robert Debré Hospital, Reims,
10 France, 75019

11 ³ViiV Healthcare, Research Triangle, NC, USA, 27709

12 ⁴Yale Institute for Global Health, New Haven, CT, USA, 06510

13 ⁵Yale School of Medicine, New Haven, CT, USA, 06510

14 § *Deceased*

15

16 **CORRESPONDING AUTHOR:**

17 Kevin Maloney, MPH

18 Email: kevin.maloney@emory.edu

19 Phone: (404) 727-0483

20 Fax: (404) 712-8392

21 Alternate: Samuel M. Jenness (samuel.m.jenness@emory.edu)

22

23 **Word Count:** Main text, **3,500** words (3,500 limit); Abstract, **200** words (200 limit)

24

25 **Summary:** Long-acting injectable pre-exposure prophylaxis (LAI-PrEP) will modestly decrease HIV
26 incidence if it replaces daily-oral PrEP use among men who have sex with men. LAI-PrEP will make a
27 more substantial impact if its availability drives higher total PrEP coverage.

28

29 **ABSTRACT**

30 **Background:** Long-acting injectable HIV pre-exposure prophylaxis (LAI-PrEP) is reportedly efficacious,
31 although full trial results have not been published. We used a dynamic network model of HIV transmission
32 among men who have sex with men (MSM) to assess the population impact of LAI-PrEP when available
33 concurrently with daily-oral (DO) PrEP.

34 **Methods:** The reference model represents the current HIV epidemiology and DO-PrEP coverage (15%
35 among indicated) among MSM in the southeastern US. Primary analyses investigated varied PrEP
36 uptake and proportion selecting LAI-PrEP. Secondary analyses evaluated uncertainty in pharmacokinetic
37 efficacy and LAI-PrEP persistence relative to DO-PrEP.

38 **Results:** Compared to the reference scenario, if 50% chose LAI-PrEP, 4.3% (95% SI: -7.3%, 14.5%) of
39 infections would be averted over 10 years. LAI-PrEP impact is slightly greater than the DO-PrEP only
40 regimen based on assumptions of higher adherence and partial protection after discontinuation. If the
41 total PrEP initiation rate doubled, 17.1% (95% SI: 6.7%, 26.4%) of infections would be averted. The
42 highest population-level impact occurred when LAI-PrEP uptake and persistence improved.

43 **Conclusions:** If LAI-PrEP replaces DO-PrEP, its availability will modestly improve the population impact.
44 LAI-PrEP will make a more substantial impact if its availability drives higher total PrEP coverage, or if
45 persistence is greater for LAI-PrEP.

46 **KEY WORDS**

47 HIV; Men who have sex with men; Mathematical model; Preexposure prophylaxis; Sexual network

48

49 **BACKGROUND**

50 Men who have sex with men (MSM) remain at increased risk for HIV in the United States,
51 accounting for two-thirds of new infections in 2018 [1]. Pre-exposure prophylaxis (PrEP) is a
52 highly effective method to reduce HIV acquisition [2, 3]. However, implementation challenges
53 undermine the potential for PrEP to reduce incidence at the population level. For example, PrEP
54 uptake remains low [4-7]. The US Centers for Disease Control and Prevention (CDC) estimate
55 that 1.1 million US adults were behaviorally indicated to use PrEP in 2017 [8], but only 100,000
56 accessed PrEP [4]. Efforts to increase PrEP use are undermined by poor persistence, resulting
57 in early discontinuation among individuals with ongoing HIV risk [9-11]. Previous PrEP models
58 have predicted that current coverage levels are insufficient to reach many HIV prevention
59 targets [12, 13]. Among MSM accessing PrEP, inadequate adherence further reduces its
60 population-level prevention benefits [10, 14].

61 Alternative PrEP products that are more acceptable and easier to use for some may
62 address these implementation challenges. Daily-oral PrEP (DO-PrEP) is currently the only
63 dosing strategy recommended by the CDC and the US Food and Drug Administration [15].
64 However, alternative dosing regimens [16] have proven efficacious; novel formulations are in
65 various stages of development, including long-acting injectable [17] and topical formulations
66 [18], implants and other devices [19]. Cabotegravir is an investigational antiretroviral (strand-
67 transfer integrase inhibitor) [17]. When formulated as a long-acting injectable suspension (LAI-
68 PrEP), cabotegravir is maintained with periodic dosing at 8-week intervals [17]. The Phase III
69 clinical trial for LAI-PrEP efficacy among MSM (HPTN-083) has been discontinued early with
70 fewer incident infections observed among MSM randomized to LAI-PrEP compared to DO-PrEP
71 [20], although full trial outcomes have yet to be released.

72 LAI-PrEP may address adherence challenges with DO-PrEP because the pill burden
73 would be eliminated [14, 17]. However, the clinical burden for LAI-PrEP may be greater for
74 some because intramuscular injections are administered by a healthcare professional at 8-week

75 intervals (compared to 12-week intervals for clinical monitoring of DO-PrEP) [15]. LAI-PrEP may
76 be more acceptable for users unwilling or unable to take a daily pill [21-25]. Estimates of
77 preference for LAI-PrEP range from 30% to 67% [21, 23, 25-28], but real-world selection of LAI-
78 PrEP over DO-PrEP is unknown. Inferring population-level benefits from hypothetical LAI-PrEP
79 preferences depends on the interaction of uptake and persistence.

80 Mathematical modeling provides insights into the mechanisms by which LAI-PrEP may
81 differ from DO-PrEP under these conditions of uncertainty. A recent study [29] simulated the
82 population impact when either DO-PrEP or LAI-PrEP were allocated to MSM. The study found
83 that in scenarios with LAI-PrEP there was a greater decline in incidence than in scenarios with
84 DO-PrEP. However, the impact when LAI-PrEP is available as an additional option to DO-PrEP
85 remains unclear. It was also unclear how challenges to persistence will limit the population
86 impact of LAI-PrEP which, unlike DO-PrEP, provides continued but waning protection even after
87 discontinuation [17]. Since publication of this model, pharmacokinetic data from a Phase II
88 clinical trial of LAI-PrEP has become available [17], which can be used to specify model
89 parameters.

90 To estimate the potential population-level impact of LAI-PrEP, we used a network-based
91 mathematical model of HIV transmission dynamics among MSM in the southeastern US. To
92 understand how concurrent availability of LAI-PrEP and DO-PrEP could maximize HIV
93 prevention, we simulated scenarios varying overall PrEP uptake and the proportion choosing
94 LAI-PrEP versus DO-PrEP. We also conducted sensitivity analyses of the LAI-PrEP biological
95 parameters (pharmacokinetic and efficacy) and behavioral parameters (discontinuation rate
96 compared to DO-PrEP).

97 **METHODS**

98 We used a mathematical model of HIV transmission dynamics among black, white, and
99 Hispanic MSM, aged 15–65 years, in the Atlanta area over a 10-year period. The model was

100 simulated using *EpiModel* [30], a software platform for modeling disease dynamics in sexual
101 networks using temporal exponential random graph models (TERGMs) [31]. Building on past
102 PrEP models [12], we developed the model framework and parameterization for LAI-PrEP to
103 explore differences with DO-PrEP. Full methodological details can be found in the Web
104 Appendix.

105 *Sexual Network Model.* All network and behavioral parameters were drawn from the ARTnet
106 study, a 2017–2019 egocentric network study of 4,904 MSM reporting on 16,198 sexual
107 partnerships, including duration, concurrency and other attributes [32]. The model was initialized
108 with 10,000 MSM, but the network size varied based on entry (sexual debut) and exit (mortality
109 or aging out at 65). Summary statistics from ARTnet were fit to statistical models under the
110 TERGM framework to simulate one-off, casual, and main partnerships. Partnership formation
111 occurred stochastically by partnership type, age and race mixing, number of ongoing
112 partnerships, and sorting by receptive and insertive positioning. Relational dissolution was
113 modeled with a constant hazard based on the median duration for partnership type.

114 For MSM with HIV, rates were assigned for diagnosis, initiation of antiretroviral therapy
115 (ART), and viral suppression [33, 34]. HIV disease progressed through the acute, chronic and
116 AIDS stages. HIV viral loads were modeled continuously, in the absence of ART. ART
117 decreased HIV viral loads, with a corresponding decrease in the probability of HIV transmission
118 [35, 36]. Within serodiscordant sexual partnerships, HIV transmission occurred stochastically
119 with a per-act probability based on PrEP use [14], condom use [37], sexual positioning [38], and
120 circumcision status of the insertive partner [39].

121 *PrEP Uptake, Adherence, and Persistence.* Uptake of PrEP was determined using a two-step
122 process. Parameters for LAI-PrEP and DO-PrEP are shown in **Table 1**. First, we specified the
123 overall probability of initiating PrEP. Second, we specified the probability of choosing LAI-PrEP
124 versus DO-PrEP. By simulating uptake and selection using separate probabilities, we were able

125 to explore counterfactual scenarios regarding how user decisions interact. Eligibility to initiate
126 PrEP of either formulation was based on CDC guidelines for DO-PrEP indications [12, 15]. For
127 MSM using DO-PrEP, we assigned a probability distribution for medication adherence
128 corresponding to low (< 2 doses/week, 8.9%), medium (2–3 doses/week, 12.7%), and high
129 adherence (≥ 4 doses/week, 78.4%) [40], which modified the level of protection against HIV
130 acquisition (hazard ratios: 0.69, 0.19, and 0.02, respectively) [14]. PrEP users were screened
131 for HIV every 90 days according to CDC guidelines [15].

132 Based on CDC guidelines, behavioral indications were reassessed annually; if
133 indications had lapsed, PrEP would be discontinued for both DO-PrEP and LAI-PrEP [15]. We
134 also allowed spontaneous discontinuation of DO-PrEP to occur based on an observational study
135 showing 57% of PrEP patients remained in care 6 months after initiation [41]. We translated this
136 into a constant probability of discontinuation assuming a geometric distribution to calculate the
137 median time to stoppage (224 days) [41]. It is unknown whether MSM using LAI-PrEP would
138 have the same persistence as has been observed among MSM using DO-PrEP, so our base
139 LAI-PrEP conditions assumed that the rate of spontaneous discontinuation of LAI-PrEP would
140 be the same as the rate assigned to DO-PrEP.

141 *Injectable PrEP Pharmacokinetics and Efficacy.* Based on studies of nonhuman primates, the
142 target cabotegravir plasma concentration in clinical trials was set to 4-times the protein-adjusted
143 90% inhibitory concentration (PA-IC₉₀) [42-44]. A Phase IIa clinical trial showed that 600-mg
144 intramuscular injections at 8-week intervals were sufficient to maintain the target plasma
145 concentration [17]. For simplicity, we assumed that men achieved the target peak plasma
146 concentration following the first injection (in clinical trials, the second injection was administered
147 after 4-weeks to initially achieve the target concentration) and without an initial oral safety
148 phase.

149 Using data from the Phase IIa trial to model the pharmacokinetics of injectable
150 cabotegravir [17], we estimated the median peak plasma concentration (3.59 $\mu\text{g/ml}$) following
151 each injection after and including the second injection, as well as the rate of decay in
152 longitudinal follow-up. We estimated a continuous half-life function (35 days) of drug elimination
153 based on these two parameters. This estimate shows that plasma concentrations above PA-IC_{90}
154 and 4-times PA-IC_{90} are maintained for 22 and 12 weeks, respectively, with limited drug still
155 present 52 weeks after the final injection.

156 The Phase III trial results for cabotegravir as LAI-PrEP have not been published. Thus,
157 we used the results of a macaque study to model the relative reduction in the per-exposure
158 probability of HIV infection [42]. We used logistic regression to estimate the probability of
159 infection given the plasma concentration of cabotegravir at the time of exposure. We
160 transformed the results to the human equivalent of the PA-IC_{90} to obtain a single parameter for
161 the relative reduction in infection probability given the plasma concentration of cabotegravir. We
162 estimated that LAI-PrEP is greater than 99% effective at 4-times PA-IC_{90} ($\text{HR} = 0.002$).

163 *Reference Model and Counterfactual Scenarios.* The reference model represents current DO-
164 PrEP uptake, in which approximately 15% of indicated MSM in the southeastern US use PrEP
165 [45-47]. We calibrated the model to maintain a steady state prevalence of DO-PrEP use. To
166 reach 15% DO-PrEP, the probability of initiating PrEP given indications was set to 0.411% per
167 time-step, with LAI-PrEP selection set to 0%.

168 Our primary analysis explored scenarios of overall PrEP uptake by simultaneously
169 varying the probability of PrEP initiation (supplementing current DO-PrEP uptake by relative
170 factors of 0 to 6 times the base parameter) and the probability of selecting LAI-PrEP (replacing
171 current DO-PrEP uptake from 0% to 100%). The probability of selecting LAI-PrEP was fixed at
172 50% for all secondary analyses, while the probability of initiating PrEP was fixed at the
173 reference model value. Second, to better understand the pharmacological properties of LAI-

174 PrEP, we varied the pharmacokinetic and efficacy parameters. We varied the LAI-PrEP
175 pharmacokinetics by simultaneously modifying the peak plasma concentration after injection
176 (1.5 to 6.5 $\mu\text{g/ml}$) and the half-life of drug elimination (15 to 60 days). Separately, we varied the
177 efficacy of LAI-PrEP by scaling the per-exposure hazard ratio for transmission (5%, 10%, 25%,
178 and 50% increase or decrease in efficacy compared to the base parameter). Finally, to
179 understand how the effectiveness of LAI-PrEP could depend on continued use during periods of
180 sexual risk, we varied the rate of spontaneous discontinuation. For this, we modified the median
181 time using LAI-PrEP from 33% (approximately 75 days) to 300% (672 days) and calculated new
182 spontaneous discontinuation rates.

183 *Calibration, Simulation, and Analysis.* The network was initialized with 10,000 MSM and
184 calibrated to the estimated prevalence of diagnosed HIV (33% for black MSM; 27% for Hispanic
185 MSM; and 8.4% for white MSM) [48]. Each model scenario was simulated over 10 years and for
186 250 times. The outcomes reported were HIV prevalence and incidence per 100 person-years at
187 risk at the end of 10 years, and the percent of infections averted (PIA). The PIA was calculated
188 by comparing the cumulative incidence in each counterfactual scenario to the reference model.
189 We summarized the results using the median values of all simulations and 95% simulation
190 intervals (SI).

191 **RESULTS**

192 In the reference scenario, 15.1% (95% SI: 14.4%, 15.9%) of indicated MSM were using DO-
193 PrEP (0% LAI-PrEP). At the end of the 10-year simulation, the HIV incidence was 1.19 (95% SI:
194 0.93, 1.50) per 100 person-years and prevalence was 22.4% (95% SI: 21.5%, 23.4%).

195 Increasing both the probability of initiating PrEP (supplementing current DO-PrEP use) and the
196 probability of selecting LAI-PrEP (replacing current DO-PrEP use) would result in fewer
197 infections over 10 years, compared to the reference scenario (**Figure 1**). The benefit of
198 introducing LAI-PrEP is greater in scenarios where overall PrEP uptake also increased. Small

199 improvements, however, would still be realized at lower proportions of MSM initiating PrEP and
200 selecting LAI-PrEP.

201 Increasing either or both the initiation and the LAI-PrEP selection probabilities will
202 increase the proportion of indicated MSM protected from PrEP, which in turn causes HIV
203 incidence to decline (**Table 2**, with additional scenarios in **Supplemental Table 14**). With PrEP
204 limited to DO-PrEP, increasing the probability of initiating PrEP by two-fold resulted in a greater
205 proportion of indicated MSM using DO-PrEP (26.7%; 95% SI: 25.8%, 27.5%) and 11.3% (95%
206 SI: 0.1%, 21.1%) of infections averted. Alternatively, when the probability of selecting LAI-PrEP
207 was increased to 50% and the PrEP initiation rate was held constant, the proportion of MSM
208 using DO-PrEP dropped to 7.6% (95% SI: 7.1%, 8.2%) while LAI-PrEP use increased to 8.4%
209 (95% SI: 7.9%, 9.0%). In addition to the MSM actively using LAI-PrEP, 7.3% (95% SI: 6.8%,
210 7.7%) of indicated MSM had waning plasma concentration and thus partial protection after
211 discontinuing LAI-PrEP. This scenario resulted in a modest decrease in incidence (4.3% of
212 infections averted; 95% SI: -7.3%, 14.5%). While the median result indicates an improvement,
213 the lower bound of the 95% SI shows that incidence increased for many of the scenarios with
214 LAI-PrEP, relative to the median value of the reference model; similarly, the upper bound of the
215 interval shows that a larger decrease in incidence is possible.

216 If 100% of the MSM accessing PrEP were to select LAI-PrEP, and initiation remained at
217 the reference level, then 16.8% (95% SI: 16.1%, 17.5%) would have full protection from LAI-
218 PrEP and 13.9% (95% SI: 13.2%, 14.6%) would have waning protection, resulting in 7.5% of
219 infections averted (95% SI: -3.5%, 18.7%). Finally, if the probability of initiating PrEP increased
220 two-fold and the proportion choosing LAI-PrEP was 50%, then incidence would decrease with
221 17.1% (95% SI: 6.7%, 26.4%) of infections averted.

222 The underlying estimates for LAI-PrEP pharmacokinetics are sensitive to uncertain
223 parameter values (**Figure 2**, **Table 3**, and **Supplemental Table 15**). If the peak plasma
224 concentration were reduced to 2 µg/ml and the half-life were reduced to 15 days (an extreme

225 scenario, well below the *a priori* clinical trial targets), then the modest effect of introducing LAI-
226 PrEP at 50% selection probability (4.3% of infections averted; 95% SI: -7.3%, 14.5%) would be
227 almost eliminated (1.4% of infections averted; 95% SI: -11.5%, 11.9%). When parameters were
228 modified within a smaller range around our estimates (e.g., 3 µg/ml peak plasma concentration
229 and 25 days half-life) then the impact would be limited (3.1% of infections averted; 95% SI: -
230 10.4%, 13.5%). Similarly, the population impact of LAI-PrEP is sensitive to our estimate of the
231 drug efficacy (**Figure 3, Table 3, and Supplemental Table 16**). For example, a 50% decrease
232 in LAI-PrEP efficacy resulted in increased incidence with -4.4% (95% SI: -17.4%, 8.4%) of
233 infections averted. However, a 10% decrease in efficacy would result in a more modest decline
234 in the population benefit of introducing LAI-PrEP (2.4% of infections averted; 95% SI: -9.7%,
235 13.8%).

236 Changes to duration of persistence on LAI-PrEP, relative to the base model duration
237 based on current estimates of DO-PrEP persistence, also impacted population-level impact
238 (**Figure 4, Table 3, and Supplementary Table 17**). In scenarios where persistence improved
239 for MSM accessing LAI-PrEP, the prevention benefit of introducing LAI-PrEP increased. For
240 example, if the median time to discontinuation were 448 days (versus 224 days for the base
241 parameter), then active LAI-PrEP use would increase from 8.4% (95% SI: 7.9%, 9.0%) to 13.6%
242 (SI: 12.9%, 14.4%) with a predicted 7.9% (95% SI: -3.0%, 19.6%) of infections averted
243 (compared to 4.3% in the base model; 95% SI: -7.3%, 14.5%). Alternatively, as persistence
244 decreased, the prevalence of LAI-PrEP use among indicated MSM also decreased; the
245 proportion with waning protection from LAI-PrEP increased negligibly because overall PrEP
246 uptake was fixed. When the rate of discontinuation was doubled (median time = 112 days), the
247 predicted prevention benefit declined to 1.8% of infections averted, with the 95% SI (-11.7%,
248 13.6%) showing that many simulations represented null findings or increased incidence.

249 **DISCUSSION**

250 We projected that LAI-PrEP concurrently available with DO-PrEP would modestly reduce HIV
251 incidence among MSM compared to offering only DO-PrEP. The benefit of replacing some DO-
252 PrEP use with LAI-PrEP is due to the elimination of challenges associated with daily adherence
253 to DO-PrEP and the partial protection provided by the long metabolic half-life of LAI-PrEP even
254 after discontinuation. The benefit of LAI-PrEP would increase if uptake supplements current DO-
255 PrEP uptake. To our knowledge, this is the first modeling study to predict the population impact
256 of LAI-PrEP when available concurrently with DO-PrEP.

257 The introduction of LAI-PrEP could yield small improvements to the prevention benefit of
258 PrEP if uptake replaces current DO-PrEP use, but our model predicts even greater benefit if
259 LAI-PrEP acts to supplement current DO-PrEP uptake. Our results may be generalizable to
260 other PrEP formulations which may replace or supplement existing formulations, although
261 models will need to assess each new formulation as biological and clinical factors may vary. We
262 designed our model to explore PrEP uptake using two components: total PrEP coverage and
263 cross-sectional mix of DO-PrEP and LAI-PrEP. It is unknown how many MSM currently using
264 DO-PrEP will switch to LAI-PrEP once available; however, future preference estimates range
265 from 35–67% would switch to LAI-PrEP [25, 28]. Low uptake has been a limiting factor to the
266 population benefit of DO-PrEP [4-6]. Similar to other studies [12, 13], we found that large-scale
267 reductions in HIV incidence will require greater PrEP uptake among MSM than has currently
268 been observed in the US [4-6]. This may be achieved if the availability of LAI-PrEP increases
269 the proportion of indicated individuals accessing PrEP. Although 66% of PrEP inexperienced
270 MSM indicate interest in LAI-PrEP [27], translating interest to actual uptake has proven difficult
271 for DO-PrEP.

272 In our model, the prevention benefits of LAI-PrEP were greater when persistence
273 increased above the levels currently observed for DO-PrEP. Our finding is in direct contrast to
274 an earlier LAI-PrEP modeling study, which counterintuitively reported lower HIV incidence as

275 LAI-PrEP persistence decreased [29]. However, that model assumed PrEP was allocated to
276 maintain a constant prevalence of active users in the population so that a new LAI-PrEP user
277 immediately replaced one who had discontinued. As a result, the total person-time on LAI-PrEP
278 would artificially increase in scenarios with lower persistence, through the increased number of
279 individuals with waning protection after discontinuation. This model assumption is unrealistic,
280 and the corresponding relationship between discontinuation and LAI-PrEP impact implausible.
281 In our model, we disentangled these two components of PrEP prevalence (initiation and
282 persistence) in order to evaluate the individual contribution of each factor. We therefore varied
283 LAI-PrEP persistence without artificially inflating the person-time on LAI-PrEP, isolating the
284 effects of initiation and persistence. Our model shows that improving persistence would
285 increase total PrEP coverage in the population and thus decrease HIV incidence, even if the
286 overall PrEP initiation rate remained constant.

287 Persistence will likely remain a challenge for all persons accessing PrEP. The reasons
288 for discontinuation off DO-PrEP in practice include decreased HIV risk perception, non-
289 adherence to the clinical protocol for PrEP, insurance barriers and experiencing side-effects [9,
290 49]. The clinical procedures of LAI-PrEP may be even more challenging for some to maintain,
291 given more frequent clinical care visits (i.e., six annual visits for LAI-PrEP compared to four for
292 DO-PrEP). However, the history of contraceptive medication could serve as a guide: increased
293 choices improved uptake, persistence, and adherence, as individuals selected the modality
294 which most closely aligned with their preferences [50]. As options increase for PrEP, uptake,
295 persistence and adherence may similarly improve across the board. When LAI-PrEP becomes
296 available, clinical practice guidelines should be developed to counsel potential users on the
297 formulation that best meets their needs.

298 *Limitations.* Our model has a number of important limitations. The first is uncertainty of the LAI-
299 PrEP parameters, since Phase III clinical trials have not been published. Our model parameters

300 may be misspecified which would cause our primary results to be biased. To accommodate this,
301 we tested a range of plausible parameters for LAI-PrEP pharmacokinetics and efficacy, which
302 had only a small effect on the model results. Our model was also a simplification of the protocol
303 for LAI-PrEP used in the Phase III clinical trial [17]. Increased complexity and clinical burden of
304 the protocol may result in lower persistence. Specifically, we did not include the 4-week oral
305 dosing phase of cabotegravir that is used to ensure safety. We also assumed that the peak
306 plasma concentration for cabotegravir would be achieved after a single intramuscular dose,
307 instead of the two initial doses at a 4-week interval. Similarly, we did not model an oral ramp-
308 down phase for individuals discontinuing LAI-PrEP under the supervision of their clinician
309 (opposed to spontaneous discontinuation). This latter phase of LAI-PrEP is used to prevent
310 infection during the waning tail of LAI-PrEP protection. Finally, we did not model resistance to
311 cabotegravir among individuals that acquire HIV infection following discontinuation of LAI-PrEP,
312 while the drug remains present but provides only partial protection. This phenomenon presents
313 a new challenge compared to DO-PrEP. Future studies will need to evaluate resistance and
314 what impact this may have on transmission dynamics, if clinical trial and observational data
315 demonstrate the occurrence of resistance.

316 *Conclusions.* The introduction of LAI-PrEP will modestly improve the prevention benefit of DO-
317 PrEP if LAI-PrEP only serves as a replacement to DO-PrEP. This is due to the non-inferiority in
318 the biological benefit of LAI-PrEP over DO-PrEP. However, LAI-PrEP could make a more
319 substantial impact on HIV incidence if the availability of LAI-PrEP increases the likelihood that
320 indicated users will start on PrEP, or decreases the likelihood that current PrEP users will
321 discontinue despite ongoing risk. Prior to the FDA approval of LAI-PrEP, public health policy
322 and implementation science on LAI-PrEP should anticipate these user behaviors as critical to
323 maximizing the benefits of this new HIV prevention tool.

324

325 **ACKNOWLEDGEMENTS**

326 We would like to acknowledge our friend and colleague, Robert A. Driggers, who contributed
327 substantially to the design and conduct of this study, and in authoring this paper, prior to his
328 unexpected death. Rob was an important member of our team and he will be missed.

329 **DISCLOSURES**

330 S.S. is an employee of ViiV Healthcare, which owns the patent for Cabotegravir. Her scientific
331 contribution to this study was completed before she joined ViiV Healthcare. ViiV Healthcare did
332 not fund or participate in any stage of this study. K.M., R.D., E.A., A.M., and S.J. have no
333 conflicts to report.

334 **AUTHORSHIP**

335 K.M., R.D., S.S., E.A., and A.M. conceived the analysis and assisted in coding the model. K.M.
336 conducted the statistical analyses and drafted the manuscript. R.D. provided critical input with
337 K.M. to specify the pharmacokinetic properties of the LAI-PrEP model. A.L.G. assisted in coding
338 the model and provided input to the analysis plan. S.J. provided direction to the development of
339 the analysis plan, led the coding of the model, and provided critical input to the manuscript and
340 technical appendix. All authors reviewed and provided substantial feedback to drafts of the
341 manuscript.

342 **FUNDING**

343 This work was supported by National Institutes of Health grants R21 MH112449, R01 AI138783,
344 and P30 AI050409 (Emory University Center for AIDS Research).

345

346 **CORRESPONDING AUTHOR:**

347 Kevin Maloney, MPH

348 Department of Epidemiology

349 Emory University
350 1518 Clifton Rd.
351 Atlanta, GA 30322
352 Email: kevin.maloney@emory.edu

353 Phone: (404) 727-0483

354 Fax: (404) 712-8392

355

356 **MEETINGS**

357 A previous version of this model was presented as a poster at the International AIDS Society's
358 10th Conference on HIV Science (Abstract ID: TUPEC390). A pre-print of this manuscript has
359 been posted to medRxiv (medrxiv.org/content/10.1101/19012443v1).

360 **SUPPLEMENTAL DIGITAL CONTACT**

361 Maloney_Projected_Impact_of_Injectable_PrEP_Appendix_version_1.docx

REFERENCES

1. Centers for Disease Control and Prevention. Estimated HIV incidence and prevalence in the United States, 2014-2018. HIV Surveillance Supplemental Report. Vol. 25, **2020**.
2. Grant RM, Lama JR, Anderson PL, et al. Preexposure chemoprophylaxis for HIV prevention in men who have sex with men. *N Engl J Med* **2010**; 363:2587-99.
3. Spinner CD, Brunetta J, Shalit P, et al. DISCOVER study for HIV pre-exposure prophylaxis (PrEP): F/TAF has a more rapid onset and longer sustained duration of HIV protection compared with F/TDF. 10th IAS Conference on HIV Science. Mexico City, Mexico, **2019**.
4. Sullivan PS, Giler RM, Mouhanna F, et al. Trends in the use of oral emtricitabine/tenofovir disoproxil fumarate for pre-exposure prophylaxis against HIV infection, United States, 2012-2017. *Ann Epidemiol* **2018**; 28:833-40.
5. Finlayson T, Cha S, Xia M, et al. Changes in HIV Preexposure Prophylaxis Awareness and Use Among Men Who Have Sex with Men - 20 Urban Areas, 2014 and 2017. *MMWR Morb Mortal Wkly Rep* **2019**; 68:597-603.
6. Kamitani E, Wichser ME, Adegbite AH, et al. Increasing prevalence of self-reported HIV preexposure prophylaxis use in published surveys: a systematic review and meta-analysis. *AIDS* **2018**; 32:2633-5.
7. Parsons JT, Rendina HJ, Lassiter JM, Whitfield TH, Starks TJ, Grov C. Uptake of HIV Pre-Exposure Prophylaxis (PrEP) in a National Cohort of Gay and Bisexual Men in the United States. *J Acquir Immune Defic Syndr* **2017**; 74:285-92.
8. Smith DK, Van Handel M, Grey J. Estimates of adults with indications for HIV pre-exposure prophylaxis by jurisdiction, transmission risk group, and race/ethnicity, United States, 2015. *Ann Epidemiol* **2018**; 28:850-7 e9.

9. Krakower D, Maloney KM, Powell VE, et al. Patterns and clinical consequences of discontinuing HIV preexposure prophylaxis during primary care. *J Int AIDS Soc* **2019**; 22:e25250.
10. Marcus JL, Hurley LB, Hare CB, et al. Preexposure Prophylaxis for HIV Prevention in a Large Integrated Health Care System: Adherence, Renal Safety, and Discontinuation. *J Acquir Immune Defic Syndr* **2016**; 73:540-6.
11. Marcus JL, Hurley LB, Nguyen DP, Silverberg MJ, Volk JE. Redefining Human Immunodeficiency Virus (HIV) Preexposure Prophylaxis Failures. *Clin Infect Dis* **2017**; 65:1768-9.
12. Jenness SM, Goodreau SM, Rosenberg E, et al. Impact of the Centers for Disease Control's HIV Preexposure Prophylaxis Guidelines for Men Who Have Sex With Men in the United States. *J Infect Dis* **2016**; 214:1800-7.
13. Sullivan PS, Carballo-Diequez A, Coates T, et al. Successes and challenges of HIV prevention in men who have sex with men. *Lancet* **2012**; 380:388-99.
14. Grant RM, Anderson PL, McMahan V, et al. Uptake of pre-exposure prophylaxis, sexual practices, and HIV incidence in men and transgender women who have sex with men: a cohort study. *Lancet Infect Dis* **2014**; 14:820-9.
15. Centers for Disease Control and Prevention. Preexposure prophylaxis for the prevention of HIV infection in the United States - 2017 update: a clinical practice guideline, **2018**.
16. Molina JM, Capitant C, Spire B, et al. On-Demand Preexposure Prophylaxis in Men at High Risk for HIV-1 Infection. *N Engl J Med* **2015**; 373:2237-46.
17. Landovitz RJ, Li S, Grinsztejn B, et al. Safety, tolerability, and pharmacokinetics of long-acting injectable cabotegravir in low-risk HIV-uninfected individuals: HPTN 077, a phase 2a randomized controlled trial. *PLoS Med* **2018**; 15:e1002690.
18. Baeten J. Topical and on-demand PrEP. 10th IAS Conference on HIV Science. Mexico City, Mexico: International AIDS Society, **2019**.

19. Flexner CW. Implants and transdermal drug delivery systems for HIV prevention. 10th IAS Conference on HIV Science. Mexico City, Mexico: International AIDS Society, **2019**.
20. Landovitz RJ. HPTN083 interim results: Pre-exposure prophylaxis (PrEP) containing long-acting injectable cabotegravir (CAB-LA) is safe and highly effective for cisgender men and transgender women who have sex with men (MSM,TGW). 23rd International AIDS Conference. Virtual, **2020**.
21. Parsons JT, Rendina HJ, Whitfield TH, Grov C. Familiarity with and Preferences for Oral and Long-Acting Injectable HIV Pre-exposure Prophylaxis (PrEP) in a National Sample of Gay and Bisexual Men in the U.S. *AIDS Behav* **2016**; 20:1390-9.
22. Biello K, Coffey-Esquivel J, Hosek S, et al. Development of a mobile-based application to increase uptake of HIV testing among young US men who have sex with men. *J Int Aids Soc* **2016**; 19.
23. Greene GJ, Swann G, Fought AJ, et al. Preferences for Long-Acting Pre-exposure Prophylaxis (PrEP), Daily Oral PrEP, or Condoms for HIV Prevention Among U.S. Men Who Have Sex with Men. *AIDS Behav* **2017**; 21:1336-49.
24. Biello KB, Hosek S, Drucker MT, et al. Preferences for Injectable PrEP Among Young U.S. Cisgender Men and Transgender Women and Men Who Have Sex with Men. *Arch Sex Behav* **2018**; 47:2101-7.
25. Meyers K, Wu Y, Brill A, Sandfort T, Golub SA. To switch or not to switch: Intentions to switch to injectable PrEP among gay and bisexual men with at least twelve months oral PrEP experience. *PLoS One* **2018**; 13:e0200296.
26. Levy ME, Patrick R, Gamble J, et al. Willingness of community-recruited men who have sex with men in Washington, DC to use long-acting injectable HIV pre-exposure prophylaxis. *PLoS One* **2017**; 12:e0183521.

27. Biello KB, Mimiaga MJ, Santostefano CM, Novak DS, Mayer KH. MSM at Highest Risk for HIV Acquisition Express Greatest Interest and Preference for Injectable Antiretroviral PrEP Compared to Daily, Oral Medication. *AIDS Behav* **2018**; 22:1158-64.
28. John SA, Whitfield THF, Rendina HJ, Parsons JT, Grov C. Will Gay and Bisexual Men Taking Oral Pre-exposure Prophylaxis (PrEP) Switch to Long-Acting Injectable PrEP Should It Become Available? *AIDS Behav* **2018**; 22:1184-9.
29. Marshall BDL, Goedel WC, King MRF, et al. Potential effectiveness of long-acting injectable pre-exposure prophylaxis for HIV prevention in men who have sex with men: a modelling study. *Lancet HIV* **2018**; 5:e498-e505.
30. Jenness SM, Goodreau SM, Morris M. EpiModel: An R Package for Mathematical Modeling of Infectious Disease over Networks. *J Stat Softw* **2018**; 84.
31. Krivitsky PN, Handcock MS. A Separable Model for Dynamic Networks. *J R Stat Soc Series B Stat Methodol* **2014**; 76:29-46.
32. Weiss KM, Goodreau SM, Morris M, et al. Egocentric sexual networks of men who have sex with men in the United States: Results from the ARTnet study. *Epidemics* **2020**; 30:100386.
33. Beer L, Mattson CL, Bradley H, Shouse RL, Medical Monitoring P. Trends in ART Prescription and Viral Suppression Among HIV-Positive Young Adults in Care in the United States, 2009-2013. *J Acquir Immune Defic Syndr* **2017**; 76:e1-e6.
34. Beer L, Oster AM, Mattson CL, Skarbinski J, Medical Monitoring P. Disparities in HIV transmission risk among HIV-infected black and white men who have sex with men, United States, 2009. *AIDS* **2014**; 28:105-14.
35. Hughes JP, Baeten JM, Lingappa JR, et al. Determinants of per-coital-act HIV-1 infectivity among African HIV-1-serodiscordant couples. *J Infect Dis* **2012**; 205:358-65.
36. Cohen MS, Chen YQ, McCauley M, et al. Prevention of HIV-1 infection with early antiretroviral therapy. *N Engl J Med* **2011**; 365:493-505.

37. Smith DK, Herbst JH, Zhang X, Rose CE. Condom effectiveness for HIV prevention by consistency of use among men who have sex with men in the United States. *J Acquir Immune Defic Syndr* **2015**; 68:337-44.
38. Goodreau SM, Carnegie NB, Vittinghoff E, et al. What drives the US and Peruvian HIV epidemics in men who have sex with men (MSM)? *PLoS One* **2012**; 7:e50522.
39. Wiysonge CS, Kongnyuy EJ, Shey M, et al. Male circumcision for prevention of homosexual acquisition of HIV in men. *Cochrane Database Syst Rev* **2011**:CD007496.
40. Liu AY, Cohen SE, Vittinghoff E, et al. Preexposure Prophylaxis for HIV Infection Integrated With Municipal- and Community-Based Sexual Health Services. *JAMA Intern Med* **2016**; 176:75-84.
41. Chan PA, Mena L, Patel R, et al. Retention in care outcomes for HIV pre-exposure prophylaxis implementation programmes among men who have sex with men in three US cities. *J Int AIDS Soc* **2016**; 19:20903.
42. Andrews CD, Spreen WR, Mohri H, et al. Long-acting integrase inhibitor protects macaques from intrarectal simian/human immunodeficiency virus. *Science* **2014**; 343:1151-4.
43. Andrews CD, Yueh YL, Spreen WR, et al. A long-acting integrase inhibitor protects female macaques from repeated high-dose intravaginal SHIV challenge. *Sci Transl Med* **2015**; 7:270ra4.
44. Radzio J, Spreen W, Yueh YL, et al. The long-acting integrase inhibitor GSK744 protects macaques from repeated intravaginal SHIV challenge. *Sci Transl Med* **2015**; 7:270ra5.
45. Kelley CF, Kahle E, Siegler A, et al. Applying a PrEP Continuum of Care for Men Who Have Sex With Men in Atlanta, Georgia. *Clin Infect Dis* **2015**; 61:1590-7.
46. Goedel WC, Halkitis PN, Greene RE, Hickson DA, Duncan DT. HIV Risk Behaviors, Perceptions, and Testing and Preexposure Prophylaxis (PrEP) Awareness/Use in Grindr-Using Men Who Have Sex With Men in Atlanta, Georgia. *J Assoc Nurses AIDS Care* **2016**; 27:133-42.

47. Harris NS, Johnson AS, Huang YA, et al. Vital Signs: Status of Human Immunodeficiency Virus Testing, Viral Suppression, and HIV Preexposure Prophylaxis - United States, 2013-2018. *MMWR Morb Mortal Wkly Rep* **2019**; 68:1117-23.
48. Rosenberg ES, Purcell DW, Grey JA, Hankin-Wei A, Hall E, Sullivan PS. Rates of prevalent and new HIV diagnoses by race and ethnicity among men who have sex with men, U.S. states, 2013-2014. *Ann Epidemiol* **2018**; 28:865-73.
49. Lankowski AJ, Bien-Gund CH, Patel VV, Felsen UR, Silvera R, Blackstock OJ. PrEP in the Real World: Predictors of 6-Month Retention in a Diverse Urban Cohort. *AIDS Behav* **2019**; 23:1797-802.
50. Gray AL, Smit JA, Manzini N, Beksinska M. Systematic review of contraceptive medicines: "Does choice make a difference?". WHO RHRU, **2006**.

TABLES

Table 1. Pre-exposure prophylaxis parameters in reference model, base LAI-PrEP parameters and LAI-PrEP values varied in counterfactual scenarios.

Parameter	Reference	Base	Counterfactual	Reference
	Scenario	LAI-PrEP Scenario	LAI-PrEP Scenarios	
Initiation and Persistence				
Prevalence of overall PrEP use given indication	15.1%	15.1%	Varies	[45-47]
Probability of initiating PrEP per time-step	0.411%	0.411%	0 – 100%	
Probability of selecting LAI-PrEP	0%	50%	0 – 100%	[21, 23, 25-28]
Spontaneous discontinuation rate, median time	224 days	224 days	75 – 672 days	[41]
DO-PrEP				
Adherence level, % of DO-PrEP users				[40]
Low (< 2 doses/week)	8.9%	---	---	
Medium (2-3 doses/week)	12.7%	---	---	
High (4+ doses/week)	78.4%	---	---	
Efficacy, per-exposure hazard-ratio				[14]
Low adherence	0.69	---	---	
Medium adherence	0.19	---	---	
High adherence	0.02	---	---	
LAI-PrEP				
Peak plasma concentration (P)	---	3.59 µg/ml	1.5 – 6.5 µg/ml	[17]
Half-life ($T_{1/2}$)	---	35 days	15 – 60 days	[17]
Days since last injection (t)	---	Varies	Varies	
Plasma concentration (P_t)	---	$P_t = P * \left(\frac{1}{2}\right)^{\frac{t}{T_{1/2}}}$	---	[17]
Efficacy, per-exposure hazard-ratio	---	$HR = e^{P_t * B}$	± 5% – 50%	
Beta (B)	---	-9.06	---	[42]
Hazard-ratio at 4 x PA-IC ₉₀	---	0.002	Varies	[42]

Table 2. Varying rate of pre-exposure prophylaxis initiation and proportion choosing long-acting injectable pre-exposure prophylaxis (LAI-PrEP) versus daily-oral (DO) PrEP compared to the reference scenario of current uptake of DO-PrEP.

PrEP Initiation Probability ¹	LAI-PrEP Selection Probability ²	% DO-PrEP ³ (95% SI ⁴)	% LAI-PrEP ⁵ (95% SI ⁴)	% Waning LAI-PrEP ⁶ (95% SI ⁴)	HIV Prevalence ⁷ (95% SI ⁴)	HIV Incidence ⁸ (95% SI ⁴)	PIA ⁹ (95% SI ⁴)
	0%	15.1% (14.4, 15.9)	0.0% (0.0, 0.0)	0.0% (0.0, 0.0)	22.4% (21.5, 23.4)	1.19 (0.93, 1.50)	Reference Model
Base Probability	25%	11.4% (10.7, 12.0)	4.2% (3.8, 4.6)	3.7% (3.4, 4.1)	22.2% (21.5, 23.1)	1.15 (0.90, 1.42)	2.0% (-9.6, 13.1)
	50%	7.6% (7.1, 8.2)	8.4% (7.9, 9.0)	7.3% (6.8, 7.7)	22.1% (21.3, 22.9)	1.14 (0.87, 1.40)	4.3% (-7.3%, 14.5)
	75%	3.8% (3.4, 4.2)	12.6% (11.9, 13.3)	10.7% (10.1, 11.3)	21.9% (21.0, 22.9)	1.09 (0.84, 1.38)	6.3% (-7.0, 16.7)
	100%	0.0% (0.0, 0.0)	16.8% (16.1, 17.5)	13.9% (13.2, 14.6)	21.8% (20.9, 22.8)	1.07 (0.84, 1.36)	7.5 (-3.5, 18.7)
	0%	26.7% (25.8, 27.5)	0.0% (0.0, 0.0)	0.0% (0.0, 0.0)	21.5% (20.6, 22.3)	1.02 (0.78, 1.31)	11.3% (0.1, 21.1)
2x Base Probability	25%	20.0% (19.1, 20.8)	7.4% (6.9, 7.9)	6.4% (5.9, 6.9)	21.2% (20.5, 22.1)	0.99 (0.74, 1.25)	14.6% (2.6, 24.4)
	50%	13.4% (12.7, 14.0)	14.8% (14.0, 15.5)	12.3% (11.7, 12.9)	21.0% (20.2, 21.8)	0.95 (0.72, 1.20)	17.1% (6.7, 26.4)
	75%	6.7% (6.2, 7.1)	22.2% (21.3, 23.0)	17.6% (16.8, 18.4)	20.8% (20.0, 21.7)	0.90 (0.68, 1.17)	19.8% (9.4, 29.1)
	100%	0.0% (0.0, 0.0)	29.5% (28.5, 30.4)	22.3% (21.6, 23.1)	20.5% (19.7, 21.4)	0.87 (0.68, 1.11)	22.4% (13.3, 31.8)
	0%	43.1% (42.0, 44.0)	0.0% (0.0, 0.0)	0.0% (0.0, 0.0)	20.4% (19.7, 21.3)	0.87 (0.60, 1.10)	24.4% (13.9, 33.0)
4x Base Probability	25%	32.3% (31.3, 33.1)	11.9% (11.2, 12.6)	10.0% (9.4, 10.5)	20.1% (19.3, 20.8)	0.81 (0.60, 1.03)	28.5% (20.0, 36.0)
	50%	21.5% (20.7, 22.3)	23.8% (23.0, 24.6)	18.4% (17.6, 19.1)	19.7% (18.9, 20.4)	0.74 (0.55, 0.98)	32.0% (23.6, 40.6)
	75%	10.8% (10.1, 11.4)	35.6% (34.7, 36.6)	25.2% (24.4, 25.9)	19.4% (18.6, 20.1)	0.70 (0.53, 0.90)	36.2% (27.5, 43.9)
	100%	0.0% (0.0, 0.0)	47.5% (46.5, 48.6)	30.5% (29.7, 31.4)	19.1% (18.4, 19.9)	0.66 (0.49, 0.85)	39.5% (31.6, 46.3)

¹Weekly probability of initiating PrEP given behavioral indications; the base probability was calibrated to achieve 15% DO-PrEP in the reference model and modified in experimental scenarios. ²Probability of selecting LAI-PrEP (versus DO-PrEP) given initiation. ³Median proportion using daily-oral pre-exposure prophylaxis among HIV-negative MSM with a behavioral indication for PrEP. ⁴95% simulation interval. ⁵Median proportion using long-acting injectable pre-exposure prophylaxis among HIV-negative MSM with a behavioral indication for PrEP. ⁶Median proportion with waning protection from LAI-PrEP (>8 weeks and ≤ 52 weeks since last dose) among HIV-negative MSM with a behavioral indication for PrEP. ⁷HIV prevalence among all MSM. ⁸HIV incidence per 100 person-years at risk. ⁹Percent of infections averted over 10 years compared to the reference model scenario.

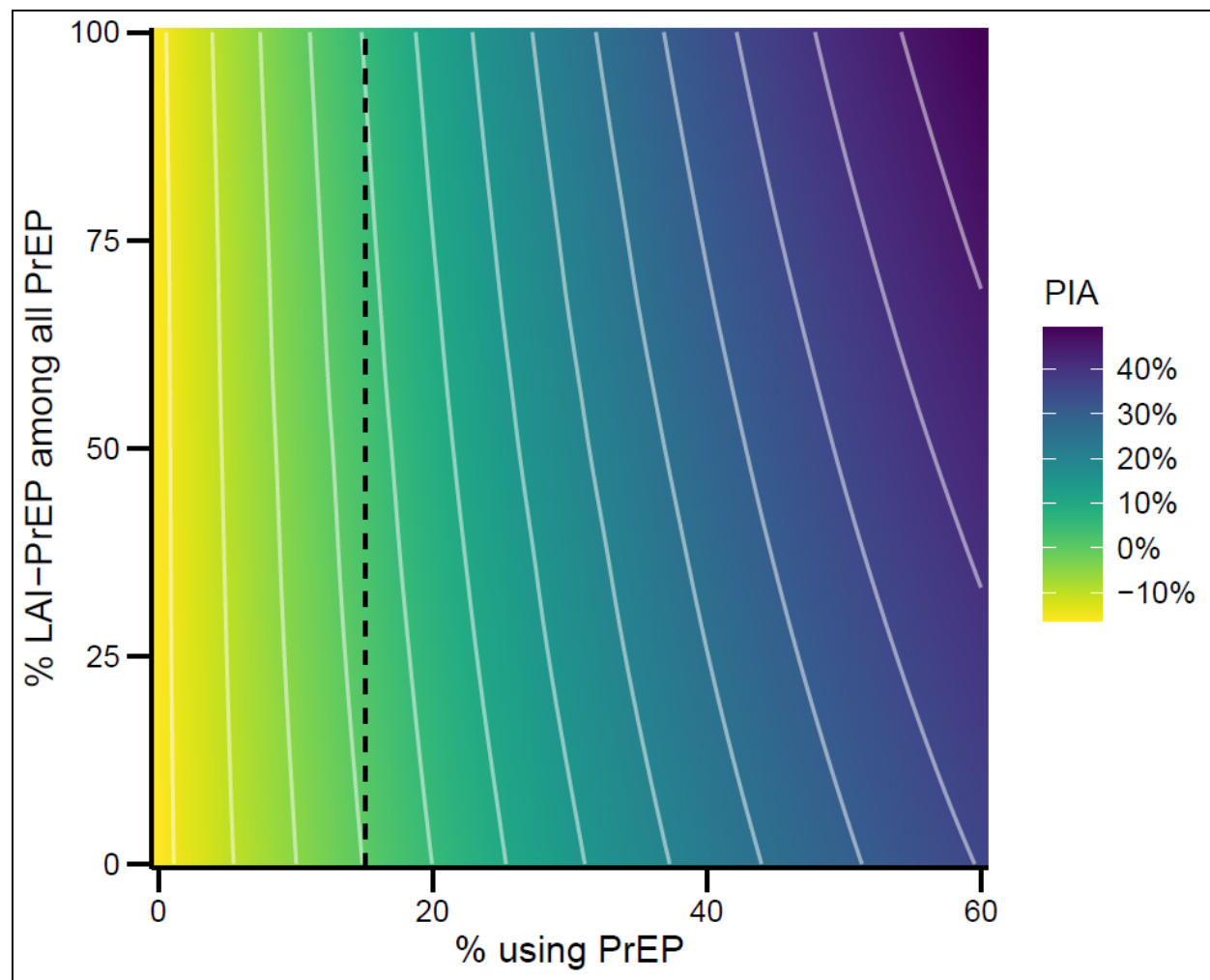
Table 3. Varying base parameters for long-acting injectable pre-exposure prophylaxis compared to the reference scenario of current uptake of DO-PrEP.

Scenario	% DO-PrEP ¹ (95% SI ³)	% LAI-PrEP ² (95% SI ³)	% Waning LAI-PrEP ² (95% SI ³)	HIV Prevalence (95% SI ³)	HIV Incidence ⁴ (95% SI ³)	PIA ⁵ (95% SI ³)
Reference	15.1% (14.4, 15.9)	0.0% (0.0, 0.0)	0.0% (0.0, 0.0)	22.4% (21.5, 23.4)	1.19 (0.93, 1.50)	---
Base Parameters	7.6% (7.1, 8.2)	8.4% (7.9, 9.0)	7.3% (6.8, 7.7)	22.1% (21.3, 22.9)	1.14 (0.87, 1.40)	4.3% (-7.3%, 14.5)
Pharmacokinetics (base parameters: peak plasma concentration = 3.59 µg/ml; half-life = 35 days)						
2 µg/ml 15 days	7.6% (7.1, 8.1)	8.4% (7.8, 8.9)	7.3% (6.8, 7.8)	22.3% (21.4, 23.3)	1.17 (0.89, 1.49)	1.4% (-11.5, 11.9)
3 µg/ml 25 days	7.6% (7.0, 8.1)	8.4% (7.9, 8.9)	7.3% (6.8, 7.8)	22.2% (21.3, 23.1)	1.15 (0.90, 1.44)	3.1% (-10.4, 13.5)
LAI-PrEP Efficacy (base parameter: continuous function; hazard ratio at PA-IC₉₀ = 0.002)						
50% Decrease	7.6% (7.1, 8.2)	8.4% (7.8, 9.0)	7.3% (6.8, 7.8)	22.8% (22.0, 23.7)	1.32 (1.05, 1.66)	-4.4% (-17.4, 8.4)
10% Decrease	7.6% (7.1, 8.1)	8.4% (7.8, 9.0)	7.3% (6.8, 7.8)	22.2% (21.3, 23.1)	1.17 (0.89, 1.45)	2.4% (-9.7, 13.8)
10% Increase	7.6% (7.1, 8.2)	8.4% (7.8, 9.0)	7.3% (6.8, 7.8)	21.9% (21.1, 22.8)	1.08 (0.82, 1.40)	6.0% (-6.4, 16.6)
50% Increase	7.6% (7.1, 8.1)	8.4% (7.8, 9.0)	7.3% (6.8, 7.8)	21.5% (20.6, 22.3)	0.98 (0.73, 1.23)	10.9% (0.4, 21.4)
LAI-PrEP Spontaneous Discontinuation (base parameter: median time to discontinuation = 224 days)						
1/3x = 74.7 days	8.0% (7.4, 8.5)	3.8% (3.5, 4.1)	7.7% (7.2, 8.2)	22.3% (21.4, 23.2)	1.16 (0.89, 1.47)	1.1% (-12.3, 12.9)
1/2x = 112 days	7.9% (7.3, 8.4)	5.0% (4.6, 5.4)	7.6% (7.0, 8.1)	22.3% (21.3, 23.2)	1.17 (0.92, 1.49)	1.8% (-11.7, 13.6)
2x = 448 days	7.2% (6.7, 7.7)	13.6% (12.9, 14.4)	6.8% (6.3, 7.3)	21.7% (20.8, 22.6)	1.08 (0.83, 1.34)	7.9% (-3.6, 18.6)
3x = 672 days	6.9% (6.4, 7.4)	17.5% (16.6, 18.3)	6.5% (6.0, 6.9)	21.6% (20.7, 22.5)	1.02 (0.77, 1.28)	10.5% (-2.2, 20.5)

¹Constant discontinuation rate with a median time to discontinuation of 224 days in the base parameter. ²Median proportion using daily-oral pre-exposure prophylaxis among HIV-negative MSM with a behavioral indication for PrEP. ³95% simulation interval. ⁴Median proportion using long-acting injectable pre-exposure prophylaxis among HIV-negative MSM with a behavioral indication for PrEP. ⁵Median proportion with waning protection from LAI-PrEP (>8 weeks and ≤ 52 weeks since last dose) among HIV-negative MSM with a behavioral indication for PrEP. ⁶HIV prevalence among all MSM. ⁷HIV incidence per 100 person-years at risk. ⁸Percent of infections averted over 10 years compared to the reference model scenario.

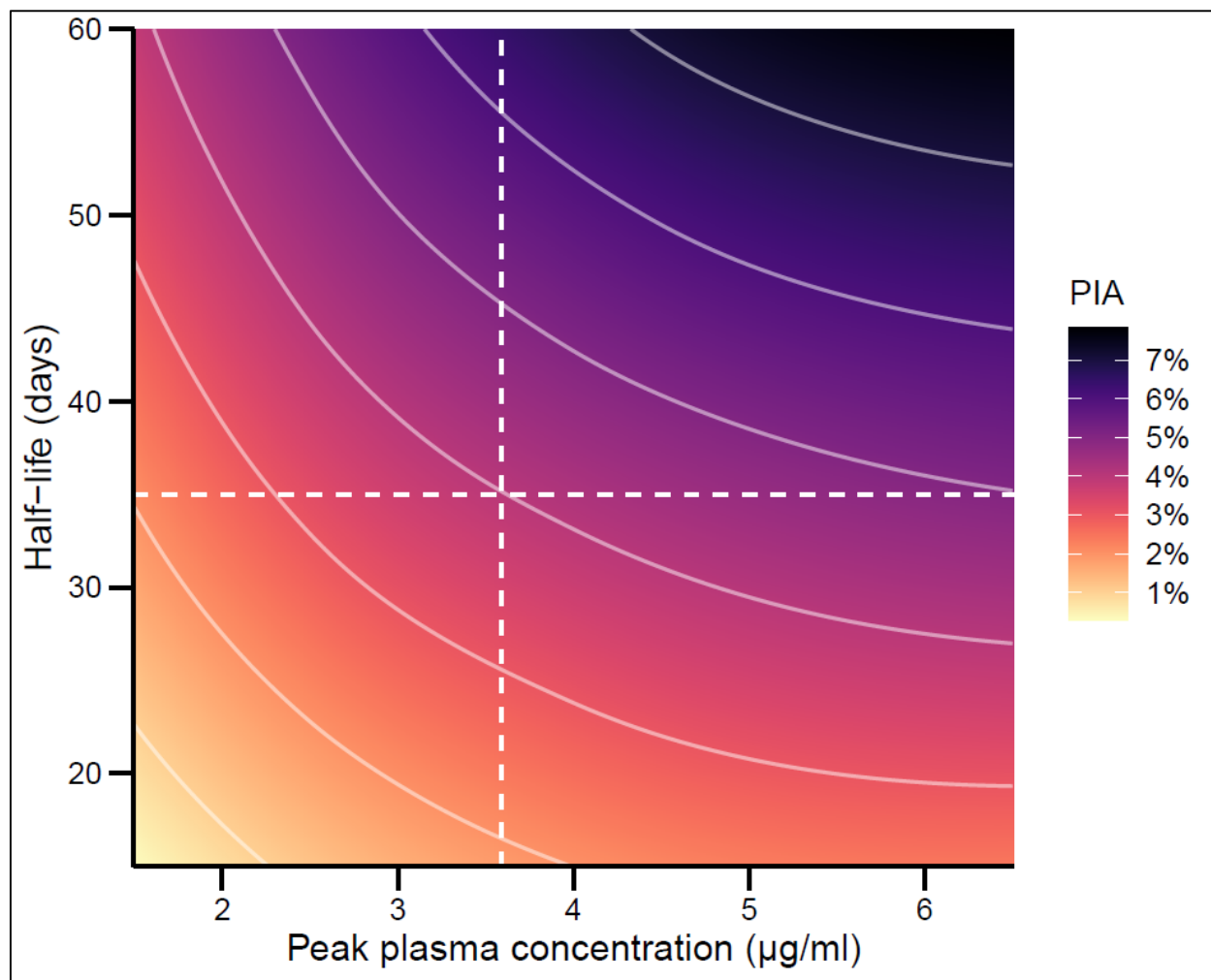
FIGURES

Figure 1. Population benefit of varying overall PrEP uptake and proportion using LAI-PrEP.



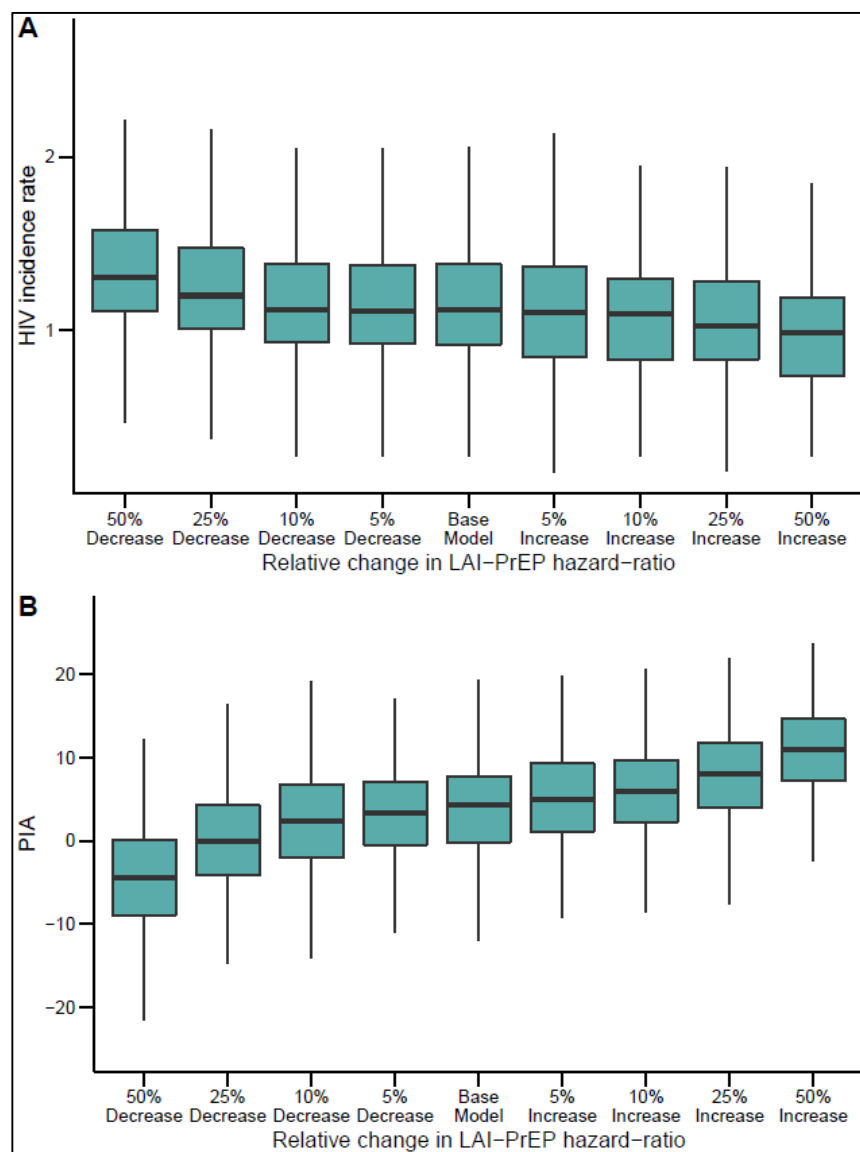
Legend: Percent of infections averted (PIA) over 10 years, compared to the reference scenario of 15% (dashed line) of behaviorally indicated men who have sex with men using pre-exposure prophylaxis and 0% choosing long-acting injectable pre-exposure prophylaxis (LAI-PrEP) versus daily-oral pre-exposure prophylaxis, across varying overall PrEP uptake and proportion using LAI-PrEP.

Figure 2. Population benefit of long-acting injectable pre-exposure prophylaxis (LAI-PrEP) across varying pharmacokinetic parameters.



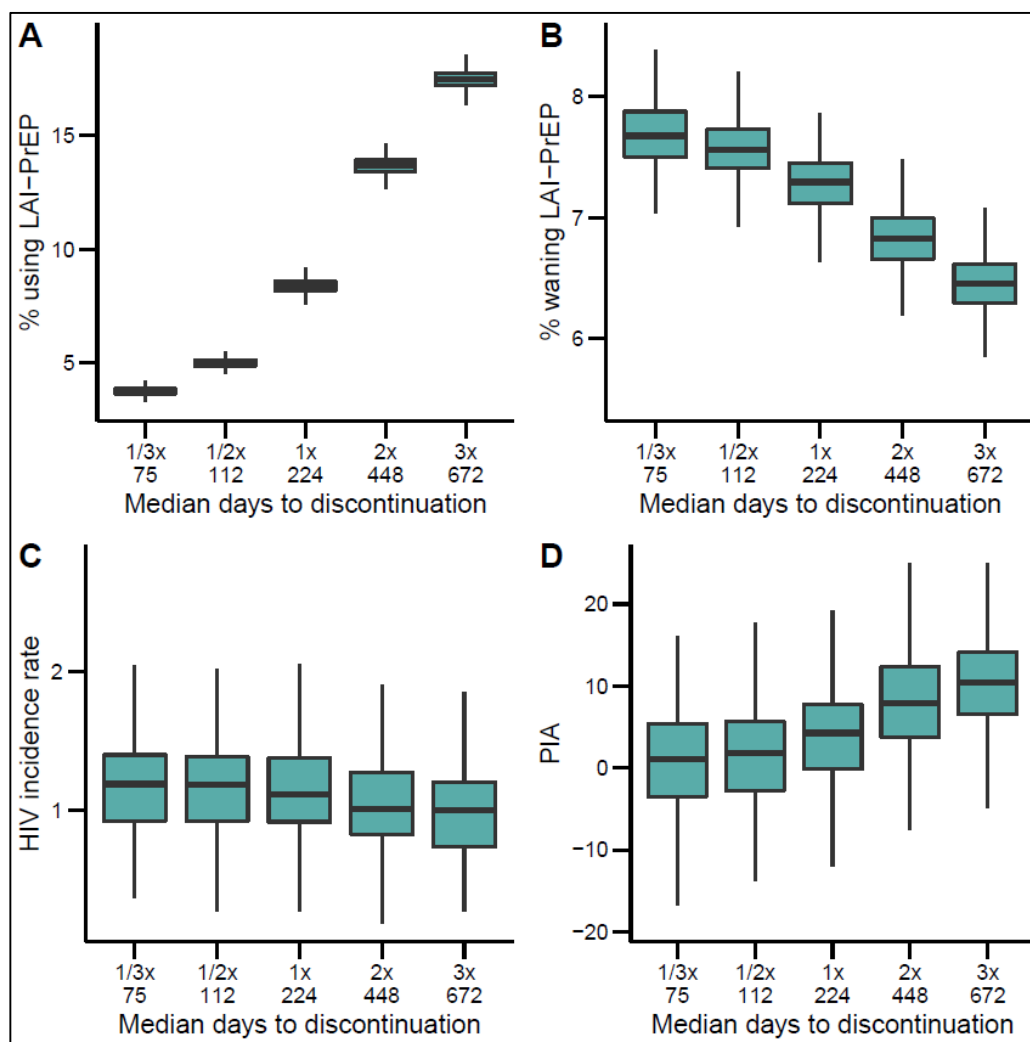
Legend: Percent of infections averted (PIA) over 10 years, compared to the reference scenario of 15% (dashed line) of behaviorally indicated men who have sex with men using pre-exposure prophylaxis and 0% choosing long-acting injectable pre-exposure prophylaxis (LAI-PrEP) versus daily-oral pre-exposure prophylaxis, if 50% of PrEP users choose LAI-PrEP when available, across varying parameters for LAI-PrEP pharmacokinetics. Dashed lines indicate peak plasma concentration (3.59 µg/ml) and half-life (5 weeks) used in the base model parameters.

Figure 3. Population benefit of long-acting injectable pre-exposure prophylaxis (LAI-PrEP) across varying efficacy.



Legend: HIV outcomes among all men who have sex with men (MSM) in a population with 15% of behaviorally indicated men using PrEP and 50% choosing long-acting injectable pre-exposure prophylaxis (LAI-PrEP) versus daily-oral PrEP, across varying scenarios of the relative change in per-exposure LAI-PrEP efficacy. Panel A: HIV incidence rate per 100 person-years at risk. Panel B: Percent of infections averted compared to the reference scenario of 15% of behaviorally indicated MSM using PrEP and 0% choosing LAI-PrEP.

Figure 4. Population benefit of long-acting injectable pre-exposure prophylaxis (LAI-PrEP) across varying rates of spontaneous discontinuation.



Legend: Long-acting injectable pre-exposure prophylaxis (LAI-PrEP) use and HIV outcomes among all men who have sex with men (MSM) across scenarios with fixed overall PrEP initiation rate (calibrated to 15% of behaviorally indicated MSM in the reference scenario), 50% choosing LAI-PrEP, and varying LAI-PrEP spontaneous discontinuation rates, compared to a reference scenario of 0% choosing LAI-PrEP.

Panel A: Percent of behaviorally indicated MSM actively using LAI-PrEP (≤ 8 weeks since last dosage).

Panel B: Percent of behaviorally indicated MSM with waning protection from LAI-PrEP after discontinuation (> 8 weeks and ≤ 52 weeks since last dosage).

Panel C: HIV incidence rate per 100 person-years at risk.

Panel D: Percent of infections averted compared to the reference scenario.

