

1 **Long-term retention on antiretroviral therapy among infants,**
2 **children, adolescents and adults in Malawi: A cohort study**

3 **Short title and running head: Long-term retention on ART**

4 **Catrina Mugglin^{1*}, Andreas D. Haas¹, Joep J van Oosterhout^{2,3}, Malango Msukwa^{4,6}, Lyson Tenthani^{1,5},**
5 **Janne Estill^{1,6}, Matthias Egger¹, Olivia Keiser^{1,6}**

6 ¹ Institute of Social and Preventive Medicine, University of Bern, Bern, Switzerland

7 ² Dignitas International, Zomba, Malawi

8 ³ Department of Medicine, College of Medicine, University of Malawi, Blantyre, Malawi

9 ⁴ Baobab Health Trust, Lilongwe, Malawi

10 ⁵ I-TECH Malawi, Lilongwe, Malawi

11 ⁶ Institute of Global Health, University of Geneva, Geneva, Switzerland

12

13 * corresponding author

14 Email: catrina.mugglin@ispm.unibe.ch (CM)

15 Word count: Title: 16; Abstract: 245; main text: 3401

16

NOTE: This preprint reports new research that has not been certified by peer review and should not be used to guide clinical practice.

17 Abstract

18 **Objectives:** We examine long-term retention of adults, adolescents and children on antiretroviral
19 therapy under different HIV treatment guidelines in Malawi.

20 **Design:** Prospective cohort study.

21 **Setting and participants:** Adults and children starting ART between 2005 and 2015 in 21 health
22 facilities in southern Malawi.

23 **Methods:** We used survival analysis to assess retention at clinic level, Cox regression to examine risk
24 factors for loss to follow up, and competing risk analysis to assess long-term outcomes of people on
25 antiretroviral therapy (ART).

26 **Results:** We included 132,274 individuals in our analysis, totalling 270,256 person years of follow up
27 (PYFU; median per patient 1.3, interquartile range (IQR) 0.26 – 3.1), 62% were female and the
28 median age was 32 years. Retention on ART was lower in the first year on ART compared to
29 subsequent years for all guideline periods and age groups. Infants (0-3 years), adolescents and young
30 adults (15 -24 years) were at highest risk of LTFU. Comparing the different calendar periods of ART
31 initiation we found that retention improved initially, but remained stable thereafter.

32 **Conclusion:** Even though the number of patients and the burden on health care system increased
33 substantially during the study period of rapid ART expansion, retention on ART improved in the early
34 years of ART provision, but gains in retention were not maintained over 5 years on ART. Reducing
35 high attrition in the first year of ART should remain a priority for ART programs, and so should
36 addressing poor retention among adolescents, young adults and men.

37

38

39 Introduction

40 In 2014 UNAIDS released the “90-90-90” targets and antiretroviral therapy (ART) for prevention of
41 HIV transmission became key to the response to the global HIV epidemic [1]. With the “90-90-90”
42 targets UNAIDS aims to end the HIV epidemic by ensuring that the majority of people infected with
43 HIV are on effective ART and can no longer transmit the virus: by 2020, 90% of all people living with
44 HIV should know their status, 90% of people diagnosed should receive ART, and 90% of the people
45 on ART should achieve viral load suppression.

46 The latest World Health Organization (WHO) recommendation that all people living with HIV should
47 initiate ART regardless of clinical or immunological stage facilitates early uptake of ART, but long-
48 term retention on ART is crucial for the success of the 90-90-90 strategy, as people who stop
49 treatment experience HIV replication and may acquire ART resistance and transmit the virus [2,3].

50 Therefore, treatment programs face the challenge to extend ART to all HIV-infected patients, and at
51 the same time retain the expanding number of patients on lifelong ART [4,5]. Studies suggest that
52 people who initiate ART in a less advanced stage of the disease have worse retention than those who
53 are sick when they begin therapy [6–8]. High rates of ART uptake among asymptomatic PLHIV due to
54 universal ART eligibility may thus lead to worse retention [9].

55 Several systematic reviews have shown that retention on ART is suboptimal and treatment programs
56 need to implement interventions to improve retention to meet UNAIDS targets [10–12]. Retention in
57 care is particularly challenging among adolescents [13,14], pregnant women, and their HIV-exposed
58 children [7,15] and the latest WHO guidelines promote differentiated care models to address the
59 different needs for HIV care services for different patient populations. Intervention to improve
60 retention that are targeted to specific populations including teen friendly services [16] or fewer clinic
61 visits for patients stable on ART [16] are promising interventions. Several studies have shown that
62 loss to follow-up is a substantial problem in Malawi’s ART programme, reported attrition is highest in

63 adolescents [13,14] and women who started ART in the Option B+ programme [7,8]. Most studies
64 have analyzed loss to follow-up in either adults or children and in limited geographical areas.

65

66 We examine retention in care by year of starting ART to assess the impact of expanded access to ART
67 on retention. We included patients from a large part of Malawi and from all age groups to identify
68 populations in the greatest need for tailored interventions to improve retention.

69

AUTHOR MANUSCRIPT

70 **Methods**

71 **The Malawi ART programme**

72 Malawi introduced free ART in 2004, using a public health approach that standardizes ART regimens
73 and clinically monitors patients for toxicity and treatment failure, in 2011 viral load (VL) monitoring
74 was introduced. Patients are followed monthly for the first 6 months, and every two or three months
75 thereafter. In 2003, Malawi issued the first national HIV management guidelines. Recommendations
76 for when to start ART, and which ART regimens should be used, have changed over time (S1 Table),
77 generally in line with WHO guidance. National guidelines were first revised in April 2006 (when the
78 CD4 threshold for ART eligibility changed from 200 to 250 cells/ μ l), and again in April 2008 (CD4
79 threshold remained at 250 cells/ μ l), July 2011 (CD4 threshold changed to 350cells/ μ l and all pregnant
80 and breastfeeding women became eligible for lifelong ART when Option B+ was introduced;
81 additionally lifelong ART for all children under 2 years was introduced), and in July 2014 (CD4
82 threshold changed to 500cells/ μ l) [17]. In May 2016 new guidelines were published, introducing
83 universal test-and-treat for all persons living with HIV. Between 2005 and 2011, large ART clinics
84 started using an electronic medical record system (EMRS) operated by the Baobab Health Trust
85 (www.baobabhealth.org) [18]. Recorded characteristics in the EMRS system at ART initiation include
86 sex, age, reason for starting ART (WHO clinical stage, CD4 cell count, pregnant or breastfeeding
87 women, age below 5 years). Registration and follow-up data for patients starting ART are routinely
88 collected. To minimize the risk of incorrectly documenting drug dispensation and visits, healthcare
89 workers used barcode scanners and recorded drug dispensation prospectively at the point of care
90 [18], except during occasional outages of the electronic system, when data were collected on paper
91 forms and entered into the system retrospectively. Tracing of patients lost is performed according to
92 policies published by the Ministry of Health of Malawi. Patients who missed an appointment and did
93 not return to the clinic for more than 60 days were traced by expert clients using phone calls or
94 home visits.

95

96 **Inclusion criteria**

97 We used data from 21 facilities with an EMRS in central and southern Malawi, which began initiating
98 patients on ART between 2004 and 2011, depending on the facility. We used data up to database
99 closures, which was between April 2015 and December 2015. We selected these facilities because
100 they were using the Baobab Health Antiretroviral Therapy (BART) EMRS. All treatment-naive children
101 and adults who started ART in this period at any of the included facilities were eligible for inclusion.
102 Patients initiating ART in the 6 months prior to database closure were not included in the analysis
103 since they would not be able to meet the criteria for becoming LTFU (i.e. not returning to the clinic
104 for more than 6 months).

105 **Definitions and outcomes**

106 We defined ART initiation as the first recorded dispensation of ART drugs, and baseline as the date of
107 ART initiation. ART refers to the use of a triple-drug combination therapy. We defined time periods
108 based on the introduction of new national HIV guidelines: from 1.1.2004 – 31.3.2006; 1.4.2006 –
109 31.3.2008; 1.4.2008–30.6.2011; 1.7.2011–30.06.2014 and 1.7.2014–01.05.2016. We combined the
110 first two guideline periods because relatively few patients were enrolled and eligibility criteria did
111 not change substantially (S1 Table).

112 We defined retention on ART as being alive and on ART. Patients were classified as not retained on
113 ART on the date they stopped treatment, they were lost to follow up (LTFU), or died. Patients
114 transferring to another clinic were censored at the date of transfer. Patients were classified as having
115 stopped treatment if they were known to be alive, but were no longer on ART. LTFU was defined as
116 not having returned to the clinic for more than six months [19,20]. Once classified as LTFU, patients
117 remain in this state even if they later returned to care to avoid bias caused by transient interruptions
118 [21]. The date of LTFU was defined as the day of the patient's last visit to the clinic.

119 We used the STROBE cohort reporting guidelines. [22]

120 **Statistical analyses**

121 We used descriptive statistics to examine the characteristics of individuals at the start of ART. We
122 performed survival analyses to describe retention, LTFU, transfer-out, death, and stopping ART. We
123 followed patients from ART initiation until death, transfer out, treatment stop, or censored patients
124 administratively when they stopped being at risk of LTFU (i.e. six months before database closure).
125 First, we plotted crude retention percentages and 95% confidence intervals stratified by age at ART
126 initiation, sex, years on ART, and guideline period. Second, we plotted sub-distribution hazard
127 functions for the cumulative incidence of LTFU, transfer-out, death and stopping ART [23]. We
128 considered death, transfer-out, stopping ART and LTFU as competing events. Third, we used
129 univariable and multivariable Cox proportional hazard models to calculate unadjusted and adjusted
130 hazard ratios (HR) with 95% Confidence Intervals (CI) for factors associated with LTFU. To meet the
131 proportional hazard assumptions, we split follow-up time in three periods (0-1 year, >1-2 years, >2-5
132 years and 6 -8 years on ART) and fitted different Cox models for each period. We adjusted the
133 analyses for age, sex, treatment guideline period at ART initiation and reason for starting ART. We
134 used cluster-based robust standard errors to account for clustering of patients within facilities. Data
135 were analysed with STATA 13.0 (STATA Corporation, College Station, TX).

136 **Ethical approval**

137 The National Health Sciences Research Committee in Malawi and the Cantonal Ethics Committee of
138 Bern in Switzerland granted ethical approval for the study. Individual informed consent was waived
139 since we analyzed routinely collected data only.

140

141 Results

142 Baseline characteristics and study population

143 Between 2005 and 2015, 132,274 individuals met our inclusion criteria, totalling 270,256 person
144 years of follow up (PYFU; median per patient 1.3, Interquartile range (IQR) 0.26 – 3.1). We excluded
145 patients with prior ART experience (N=25,491), those who started ART after analysis closure
146 (N=4,254) and those with other inconsistencies in data (N=203). Characteristics of patients excluded
147 from the analysis were similar to those included, except that patients from central hospitals and
148 those who initiated ART in clinical stage III or IV were overrepresented among excluded patients (S2
149 Table). Median age at ART initiation was 32.5 years (IQR 26.3 – 39.6); 62% of patients were female.
150 Most patients (77.8%) started ART for their own health, and 16.6% were women starting ART under
151 Option B+. The reason for ART initiation was missing for 5.6% of participants. ART sites included 3
152 central hospitals, 13 district hospitals, 2 health centres, and 3 faith-based hospitals. The number of
153 sites increased from one site in 2005, to 21 in 2015. The number of included patients per site varied
154 from 688 to 25,809.

155 Median age at ART initiation decreased from 33.8 years in the period 2005-2008, to 31.8 during
156 2014-2015 (Table 1). The proportion of females who started ART increased from 57.9% to 62.5%,
157 peaking at 65.3% in 2011-2014, after Option B+ was introduced (Table 1). After this point,
158 approximately 25% of patients started ART under Option B+.

Table 1. Patient characteristics at initiation of antiretroviral therapy (ART), stratified by Malawi national guideline period for ART initiation (2005 - 2015).

	Guideline Period of initiating ART									
	2005 - 2008		2008 - 2011		2011 - 2014		2014 -2015		TOTAL	
Number of patients (%)	13,011	(9.8%)	37,445	(28.3%)	67,887	(51.3%)	13,931	(10.5%)	132,274	(100.0%)
Male	5,474	(42.1%)	15,473	(41.3%)	23,558	(34.7%)	5,224	(37.5%)	49,729	(37.6%)
Female	7,537	(57.9%)	21,972	(58.7%)	44,329	(65.3%)	8,707	(62.5%)	82,545	(62.4%)
Age at ART start (years) (%)										
0-3	333	(2.6%)	1,394	(3.7%)	2,420	(3.6%)	455	(3.3%)	4,602	(3.5%)
4-6	260	(2.0%)	633	(1.7%)	795	(1.2%)	181	(1.3%)	1,869	(1.4%)
7-14	656	(5.0%)	1,378	(3.7%)	2,057	(3.0%)	424	(3.0%)	4,515	(3.4%)
15-24	1,040	(8.0%)	3,219	(8.6%)	10,336	(15.2%)	2,316	(16.6%)	16,911	(12.8%)
25-34	4,803	(36.9%)	14,142	(37.8%)	26,978	(39.7%)	5,384	(38.6%)	51,307	(38.8%)
35-44	3,824	(29.4%)	10,550	(28.2%)	16,664	(24.5%)	3,460	(24.8%)	34,498	(26.1%)
45-54	1,560	(12.0%)	4,311	(11.5%)	5,918	(8.7%)	1,211	(8.7%)	13,000	(9.8%)
55+	535	(4.1%)	1,818	(4.9%)	2,719	(4.0%)	500	(3.6%)	5,572	(4.2%)
Median (IQR)	33.82	(27.65-41.1)	33.72	(27.56-40.7)	31.78	(25.61-38.84)	31.83	(25.18-38.78)	32.49	(26.27-39.64)
Reason for starting ART										

WHO stage III/IV	10,046	(77.2%)	22,562	(60.3%)	26,260	(38.7%)	3,945	(28.3%)	62,813	(47.5%)
CD4 cell count measurement	2,737	(21.0%)	14,043	(37.5%)	20,868	(30.7%)	849	(6.1%)	38,497	(29.1%)
Breastfeeding, pregnancy or Option B+	0	(0.0%)	26	(0.1%)	18,448	(27.2%)	3,433	(24.6%)	21,907	(16.6%)
Pediatric*	33	(0.3%)	313	(0.8%)	1,017	(1.5%)	275	(2.0%)	1,638	(1.2%)
Unknown	195	(1.5%)	501	(1.3%)	1,294	(1.9%)	5,429	(39.0%)	7,419	(5.6%)
Health care level										
Central Hospital	9,722	(74.7%)	13,398	(35.8%)	12,621	(18.6%)	2,821	(20.2%)	38,562	(29.2%)
Distrtrict Hospital	3,289	(25.3%)	22,962	(61.3%)	44,179	(65.1%)	9,225	(66.2%)	79,655	(60.2%)
Health Center	0	(0.0%)	232	(0.6%)	5,954	(8.8%)	1,241	(8.9%)	7,427	(5.6%)
Mission Hospital	0	(0.0%)	853	(2.3%)	5,133	(7.6%)	644	(4.6%)	6,630	(5.0%)

160

161 * Pediatric includes starting due to known HIV infection and pediatric WHO stage. Children can also start due to WHO stage III / V and CD4 cell count

162 measurement

163 Retention on ART

164 By the end of the study period, 46% (60,582) of patients were retained on ART at the clinic where
165 they initiated treatment, 16% (20,868) had transferred elsewhere, 4.6% (6,040) had died, 33.1%
166 (43,766) were LTFU, and 0.7% (1,018) had stopped ART.

167 Fig 1 shows crude retention on ART for different age groups and guideline periods in the first (A),
168 second (B) and fifth (C) year on ART. Retention on ART differed between age groups and between
169 guideline periods. In the first year on ART, retention improved from the first to the second guideline
170 period for males and females. For male participants retention improved thereafter, with the highest
171 retention observed in the most recent time period. Whereas for female participants this trend was
172 only visible for the older participants (age groups 45–54 and >55 years), for those aged 15–24
173 retention decreased with the introduction of Option B+ in 2011. Retention in adolescents was lower
174 than in other age groups, for both males and females. Among those retained on ART for the first
175 year, retention in the second year on ART was similar between guideline periods, and those aged 15–
176 24 had lower retention than other age groups. Retention during the first year of ART was lower than
177 in the second year of ART for all age groups and guideline periods. For those retained on ART by the
178 end of year 2, retention in year 3-5 on ART were lower for men than for women. The drop in
179 retention for those aged 15-24 nearly disappeared for female participants but remained prominent
180 for males (Fig 1).

181 Fig 1. Crude retention at clinic according to gender and guideline periods

182 (A) at 1 year (B) at 2 years for those who were retained by the end of year 1 (C) at 5 years for those
183 who were retained at the end of year 2

184 note that the scale of the y axis does not start at 0

185

186

187 Risk factors for LTFU

188 Table 2 shows the risk of LTFU for different patient groups, stratified by duration on ART. There was
189 no difference between males and females in the univariable model for the first and second year on
190 ART. During years 2-5 on ART, females had a lower risk of becoming LTFU than males (HR 0.85, 95%
191 CI 0.78-0.93) and this difference persisted during the years 6-8. After adjusting for guideline period,
192 age at ART start and reason for starting ART, females had a lower risk of LTFU in all periods after ART
193 initiation compared to males (aHR 1st year 0.75, 95% CI 0.72 – 0.78; 2nd year 0.73, 95% CI 0.68-0.79;
194 2-5 years 0.77, 95% CI 0.70-0.84, 6-8 years 0.62 95% CI 0.55-0.69) (Table 2). The risk of LTFU
195 decreased from the first guideline period to the second for the first year of ART (HR 0.81, 95% CI
196 0.67-0.98), this difference persisted in the multivariable model (aHR 0.80, 0.66-0.97). There were
197 only small differences in LTFU risk between guideline periods for all years on ART (Table 2). Infants
198 aged 0-2 years and young adults aged 15-24 years had the highest risk of LTFU during the years 1-5
199 on ART in both the univariable and the multivariable model. During the years 6-8 children aged 6-14
200 had the highest risk of LTFU. Participants initiating ART when they were 35 years or older, had a
201 lower risk of LTFU compared to those aged 25–34 years. In the first year of ART women starting ART
202 due to Option B+ had a higher risk of LTFU compared to those who initiated for their own health (HR
203 1.90, 95% CI 1.65-2.19; and aHR 1.84, 95% CI 1.61-2.11); after one year these differences
204 disappeared.

205

206

207

Table 2. Results from Cox Regression Model, Hazard ratios (HR) and adjusted Hazard ratios (aHR) for loss to follow up (LTFU) are shown stratified by years of retention on antiretroviral therapy (ART).

	1 st year on ART		2 nd year on ART		2 – 5 years on ART		6 – 8 years on ART	
	Univariable (N=132,274), HR (95% CI)	Multivariable* (N=132,274), aHR (95% CI)	Univariable (N=132,274), HR (95% CI)	Multivariable* (N=132,274), aHR (95% CI)	Univariable (N=132,274), HR (95% CI)	Multivariable* (N=132,274), aHR (95% CI)	Univariable (N=132,274), HR (95% CI)	Multivariable* (N=132,274), aHR (95% CI)
Sex								
Male	1.00 (ref)	1.00 (ref)	1.00 (ref)	1.00 (ref)	1.00 (ref)	1.00 (ref)	1.00 (ref)	1.00 (ref)
Female	1.01 (0.95-1.08)	0.75 (0.72-0.78)	0.91 (0.79-1.04)	0.73 (0.68-0.79)	0.85 (0.78-0.93)	0.77 (0.70-0.84)	0.66 (0.60-0.73)	0.62 (0.55-0.69)
HIV guideline period								
Guidelines 2003 / 2006[#]	1.00 (ref)	1.00 (ref)	1.00 (ref)	1.00 (ref)	1.00 (ref)	1.00 (ref)	1.00 (ref)	1.00 (ref)
Guidelines 2008[†]	0.81 (0.67-0.98)	0.80 (0.66-0.97)	0.98 (0.79-1.21)	0.96 (0.79-1.18)	1.38 (0.98-1.94)	1.36 (0.97-1.91)	0.97 (0.73-1.30)	0.98 (0.74-1.30)
Guidelines 2011[‡]	1.08 (0.93-1.25)	0.87 (0.75-1.01)	1.08 (0.84-1.39)	0.96 (0.77-1.21)	1.21 (0.77-1.91)	1.17 (0.76-1.82)	NA	NA
Guidelines 2014^{**}	1.02 (0.88-1.18)	0.94 (0.84-1.07)	NA	NA	NA	NA	NA	NA
Age at ART start (years)								
0-2	1.44 (1.17-1.77)	1.55 (1.27-1.89)	1.49 (1.26-1.78)	1.48 (1.28-1.70)	1.14 (0.96-1.36)	1.06 (0.89-1.27)	1.07 (0.78-1.47)	0.98 (0.71-1.36)
3-5	0.91 (0.80-1.04)	0.98 (0.86-1.12)	0.75 (0.54-1.04)	0.72 (0.51-1.02)	1.02 (0.77-1.36)	0.97 (0.74-1.29)	1.03 (0.55-1.94)	0.88 (0.44-1.76)

6-14	0.73 (0.66-0.81)	0.78 (0.71-0.85)	0.83 (0.68-1.01)	0.82 (0.65-1.05)	1.06 (0.94-1.21)	1.03 (0.89-1.20)	1.66 (1.47-1.87)	1.48 (1.31-1.66)
15-24	1.51 (1.43-1.58)	1.35 (1.29-1.40)	1.52 (1.41-1.63)	1.51 (1.38-1.66)	1.38 (1.26-1.50)	1.42 (1.32-1.53)	1.17 (0.94-1.47)	1.29 (1.05-1.57)
25-34	1.00 (ref)	1.00 (ref)	1.00 (ref)	1.00 (ref)	1.00 (ref)	1.00 (ref)	1.00 (ref)	1.00 (ref)
35-44	0.74 (0.71-0.77)	0.79 (0.77-0.81)	0.72 (0.64-0.80)	0.70 (0.65-0.76)	0.79 (0.75-0.83)	0.76 (0.72-0.80)	0.70 (0.59-0.82)	0.64 (0.56-0.73)
45-54	0.70 (0.66-0.75)	0.77 (0.74-0.80)	0.64 (0.59-0.70)	0.62 (0.55-0.69)	0.69 (0.63-0.75)	0.64 (0.59-0.70)	0.71 (0.60-0.83)	0.63 (0.55-0.73)
>54	0.84 (0.74-0.95)	0.92 (0.85-0.99)	0.77 (0.66-0.91)	0.75 (0.64-0.88)	0.82 (0.71-0.95)	0.77 (0.65-0.91)	1.24 (0.97-1.58)	1.09 (0.84-1.40)
Reason for starting ART								
Own health	1.00 (ref)	1.00 (ref)	1.00 (ref)	1.00 (ref)	1.00 (ref)	1.00 (ref)	1.00 (ref)	1.00 (ref)
Option B+	1.90 (1.65-2.19)	1.84 (1.61-2.11)	1.45 (1.08-1.96)	1.34 (0.99-1.82)	1.08 (0.87-1.33)	1.06 (0.97-1.15)	NA	NA

208

209 * all models accounted for site heterogeneity using cluster based robus standard errors

210 # (calendar years 2005 - 2008)

211 † (calendar years 2008 - 2011)

212 ‡ (calendar years 2011 - 2014)

213 ** (calendar years 2014 - 2016)

214 **Competing risks analysis**

215 Overall retention on ART was 70.0% at 12 months after ART initiation, 65.2% after 2 years, and 50.7%
216 after 5 years. **Fig 2** shows the competing risks analysis. Most patients who defaulted from care were
217 LTFU in the first year. In the competing risk analysis death was more common among the oldest age
218 group (>55 years of age) and children compared to those aged 25-34, while LTFU was more common
219 among adolescents and young adults.

220 **Fig 2. Cumulative Incidence of antiretroviral therapy (ART) outcomes for patients at 21 facilities**
221 **(estimates from competing risk analysis). Treatment outcomes are compared between age groups**
222 **according to age at ART initiation.**

223

224 Discussion

225 We compared retention on ART for a large group of patients over a period of 10 years of ART
226 provision in central and southern Malawi. Even though the number of patients and the burden on
227 the health care system increased substantially during the study period of rapid ART expansion, we
228 found that retention on ART improved in the early years of ART, and stabilized thereafter. Retention
229 on ART at the clinic varied between different age groups, and was lowest among infants and young
230 adults aged 15–24. Males were at higher risk of LTFU than females throughout the study period,
231 despite the introduction of Option B+ in 2011, which increased the number of females starting ART.
232 Older PLHIV (>55 years) were more likely to die than younger persons, irrespective of duration on
233 ART.

234 Strengths of this study are the large sample size, and the ability to compare data over a long time
235 period of HIV treatment and guideline changes during strong program expansion. Our study also has
236 several limitations. All clinics that have an EMRS have large patient populations. One previous study
237 found that LTFU was higher in sites that used EMRS than in sites that did not and our results may
238 therefore not be representative for all HIV clinics in Malawi [8]. We probably underestimated
239 retention on ART, since patients who we recorded as LTFU may be in care elsewhere after silent or
240 undocumented transfer [24,25]. A study in Lilongwe, Malawi found that 40% of patients recorded as
241 LTFU, who were alive and successfully traced were in care elsewhere [26]. Underreporting of
242 mortality is very common in ART programs [27] and some patients LTFU had probably died [28]. In
243 Lilongwe, an analysis of a tracing programme for the years 2006 to 2010 revealed that 30% of
244 patients LTFU had died [29]. Death among those LTFU might be higher in earlier time periods, when
245 many started ART with advance HIV, compared to later periods. We do not know why people were
246 LTFU, but tracing studies found that the most frequent reasons for not returning to care were
247 undocumented transfer, stopping ART, and death [24]. Tracing studies among children are scarce, in
248 a systematic review of outcomes of HIV-positive patients LTFU only 4 of 30 studies included children

249 [30]. They found no difference in mortality, undocumented transfers and interruption of ART
250 between children and adults. Since our study relied on routine, operational data collection by
251 caregivers who were often overburdened, some data may be incorrect. The frequency of data errors
252 is probably low, due to regular supervision visits by teams from the Ministry of Health and its HIV
253 care stakeholders, and because of our additional logical checks after data entry. Our dataset only
254 included variables required for national monitoring, so we could not consider socioeconomic, some
255 anthropometric and other variables that are known to be associated with patients' ART outcomes
256 [31].

257 Our results confirm and extend those of earlier studies of retention on ART in Malawi and sub-
258 Saharan Africa. Retention in the first year of ART was similar in a study from Malawi covering the
259 time period between 2004 and 2007 [20]. After 12 months of follow up they found that 69.5% of
260 patients were on ART at the same facility. Another study from northern Malawi, covered a
261 comparable timeframe to ours (from 2005 – 2012) and found similar retention rates in an area of
262 lower HIV prevalence [32]. Studies from Ethiopia, reporting data from 2005 – 2011 found comparable
263 retention rates [33,34]. A 2015 systematic review of retention on ART between 2008-2013 found that
264 annual attrition decreased after 24 months, and retention was 65%–70% after 3 years on ART [10].
265 Some studies in sub-Saharan Africa identified the same baseline characteristics that predicted
266 attrition in our analysis (younger age [32] and male gender[35]). Our finding that retention on ART is
267 particularly low in adolescents was also highlighted by other studies from Sub-Saharan Africa [36–
268 39].

269
270 Malawi has successfully scaled up ART and sustained initial retention levels in those starting ART
271 more recently. However, there are differences in retention between different patient populations,
272 and patients who are not retained or have inadequate adherence to treatment are at a high risk of
273 viral rebound and drug resistance [40,41]. Programs should consider implementing feasible,

274 evidence-based interventions to promote adherence and retention, including adherence clubs,
275 adherence counseling, text message reminders by telephone, and treatment supporters [42,43].

276 In conclusion, in central and southern Malawi, retention on ART did not change much over time,
277 even though the number of patients on ART increased rapidly over time and patients starting ART
278 were increasingly asymptomatic and in good health. Since mortality on ART was higher among older
279 participants, it should be further investigated whether mortality in this group is higher compared to
280 HIV negative people of comparable age. Reducing high attrition in the first year of ART should remain
281 a priority for ART programs, and so should addressing poor retention among adolescents, young
282 adults and men.

283 **Acknowledgements**

284 We would like to thank all the participants of the study, and the staff who collected the data. The
285 study was funded by the Bill and Melinda Gates Foundation (OPP1090200), and the National Institute
286 of Allergy And Infectious Diseases of the National Institutes of Health under Award Number
287 U01AI069924. CM was supported by a MD-PhD fellowship from Schweizerische Akademie der
288 Medizinischen Wissenschaften (SAMW). OK was supported by professorship grant from the Swiss
289 National Science Foundation (SNF)(163878) and AH was partly supported by a SNF Early
290 Postdoc.Mobility Fellowship (P2BEP3_178602). These funding organizations did not play a role in the
291 study design, data collection and analysis, decision to publish, or preparation of the manuscript and
292 only provided financial support in the form of author's salaries and research material.

293

294 References

- 295 1. Joint United Nations Programme on HIV/AIDS (UNAIDS). 90-90-90 An ambitious treatment
296 target to help end the AIDS epidemic. In:
297 [Http://Www.Unaids.Org/Sites/Default/Files/Media_Asset/90-90-90_En_0.Pdf](http://www.unaids.org/sites/default/files/media_asset/90-90-90_en_0.pdf). 2014 p. 40.
- 298 2. Attia S, Egger M, Müller M, Zwahlen M, Low N. Sexual transmission of HIV according to viral
299 load and antiretroviral therapy: systematic review and meta-analysis. *AIDS*. Lippincott
300 Williams & Wilkins *AIDS*; 2009;23: 1397–404. doi:10.1097/QAD.0b013e32832b7dca
- 301 3. Meresse M, March L, Kouanfack C, Bonono R-C, Boyer S, Laborde-Balen G, et al. Patterns of
302 adherence to antiretroviral therapy and HIV drug resistance over time in the Stratall ANRS
303 12110/ESTHER trial in Cameroon. *HIV Med*. 2014;15: 478–87. doi:10.1111/hiv.12140
- 304 4. Yehia BR, French B, Fleishman JA, Metlay JP, Berry SA, Korthuis PT, et al. Retention in care is
305 more strongly associated with viral suppression in HIV-infected patients with lower versus
306 higher CD4 counts. *J Acquir Immune Defic Syndr*. 2014;65: 333–9.
307 doi:10.1097/QAI.0000000000000023
- 308 5. Yehia BR, Stephens-Shields AJ, Fleishman JA, Berry SA, Agwu AL, Metlay JP, et al. The HIV Care
309 Continuum: Changes over Time in Retention in Care and Viral Suppression. *PLoS One*.
310 2015;10: e0129376. doi:10.1371/journal.pone.0129376
- 311 6. Grimsrud A, Cornell M, Schomaker M, Fox MP, Orrell C, Prozesky H, et al. CD4 count at
312 antiretroviral therapy initiation and the risk of loss to follow-up: results from a multicentre
313 cohort study. *J Epidemiol Community Health*. 2016;70: 549–55. doi:10.1136/jech-2015-
314 206629
- 315 7. Haas AD, Tenthani L, Msukwa MT, Tal K, Jahn A, Gadabu OJ, et al. Retention in care during the
316 first 3 years of antiretroviral therapy for women in Malawi's option B+ programme: an
317 observational cohort study. *lancet HIV*. 2016;3: e175–82. doi:10.1016/S2352-3018(16)00008-
318 4
- 319 8. Tenthani L, Haas AD, Tweya H, Jahn A, van Oosterhout JJ, Chimbandira F, et al. Retention in

- 320 care under universal antiretroviral therapy for HIV-infected pregnant and breastfeeding
321 women ('Option B+') in Malawi. *AIDS*. 2014;28: 589–98. doi:10.1097/QAD.000000000000143
- 322 9. Fox MP. Are we shifting attrition downstream in the HIV cascade? *lancet HIV*. 2016;3: e554–
323 e555. doi:10.1016/S2352-3018(16)30149-7
- 324 10. Fox MP, Rosen S. Retention of Adult Patients on Antiretroviral Therapy in Low- and Middle-
325 Income Countries: Systematic Review and Meta-analysis 2008-2013. *J Acquir Immune Defic*
326 *Syndr*. 2015;69: 98–108. doi:10.1097/QAI.0000000000000553
- 327 11. Rosen S, Fox MP. Retention in HIV care between testing and treatment in sub-Saharan Africa:
328 a systematic review. *PLoS Med*. 2011;8: e1001056. doi:10.1371/journal.pmed.1001056
- 329 12. Fox MP, Rosen S. Systematic review of retention of pediatric patients on HIV treatment in low
330 and middle-income countries 2008-2013. *AIDS*. 2015;29: 493–502.
331 doi:10.1097/QAD.0000000000000559
- 332 13. Lall P, Lim SH, Khairuddin N, Kamarulzaman A. Review: an urgent need for research on factors
333 impacting adherence to and retention in care among HIV-positive youth and adolescents from
334 key populations. *J Int AIDS Soc*. 2015;18: 19393. Available:
335 <http://www.ncbi.nlm.nih.gov/pubmed/25724503>
- 336 14. MacPherson P, Munthali C, Ferguson J, Armstrong A, Kranzer K, Ferrand RA, et al. Service
337 delivery interventions to improve adolescents' linkage, retention and adherence to
338 antiretroviral therapy and HIV care. *Trop Med Int Health*. 2015;20: 1015–32.
339 doi:10.1111/tmi.12517
- 340 15. Haas AD, van Oosterhout JJ, Tenthani L, Jahn A, Zwahlen M, Msukwa MT, et al. HIV
341 transmission and retention in care among HIV-exposed children enrolled in Malawi's
342 prevention of mother-to-child transmission programme. *J Int AIDS Soc*. 2017;20: 21947.
343 doi:10.7448/IAS.20.1.21947
- 344 16. Grimsrud A, Sharp J, Kalombo C, Bekker L-G, Myer L. Implementation of community-based
345 adherence clubs for stable antiretroviral therapy patients in Cape Town, South Africa. *J Int*

- 346 AIDS Soc. 2015;18: 19984. Available: <http://www.ncbi.nlm.nih.gov/pubmed/26022654>
- 347 17. Harries AD, Ford N, Jahn A, Schouten EJ, Libamba E, Chimbwandira F, et al. Act local, think
348 global: how the Malawi experience of scaling up antiretroviral treatment has informed global
349 policy. BMC Public Health. 2016;16: 938. doi:10.1186/s12889-016-3620-x
- 350 18. Douglas GP, Gadabu OJ, Joukes S, Mumba S, McKay M V, Ben-Smith A, et al. Using
351 touchscreen electronic medical record systems to support and monitor national scale-up of
352 antiretroviral therapy in Malawi. PLoS Med. 2010;7. doi:10.1371/journal.pmed.1000319
- 353 19. Grimsrud AT, Cornell M, Egger M, Boule A, Myer L. Impact of definitions of loss to follow-up
354 (LTFU) in antiretroviral therapy program evaluation: variation in the definition can have an
355 appreciable impact on estimated proportions of LTFU. J Clin Epidemiol. 2013;66: 1006–13.
356 doi:10.1016/j.jclinepi.2013.03.013
- 357 20. Weigel R, Estill J, Egger M, Harries AD, Makombe S, Tweya H, et al. Mortality and loss to
358 follow-up in the first year of ART: Malawi national ART programme. AIDS. 2012;26: 365–73.
359 doi:10.1097/QAD.0b013e32834ed814
- 360 21. Johnson LF, Estill J, Keiser O, Cornell M, Moolla H, Schomaker M, et al. Do increasing rates of
361 loss to follow-up in antiretroviral treatment programs imply deteriorating patient retention?
362 Am J Epidemiol. 2014;180: 1208–12. doi:10.1093/aje/kwu295
- 363 22. von Elm E, Altman DG, Egger M, Pocock SJ, Gøtzsche PC, Vandenbroucke JP, et al. The
364 Strengthening the Reporting of Observational Studies in Epidemiology (STROBE) Statement:
365 guidelines for reporting observational studies. Int J Surg. 2014;12: 1495–9.
366 doi:10.1016/j.ijsu.2014.07.013
- 367 23. Fine JP, Gray RJ. A proportional hazards model for the subdistribution of a competing risk.
368 Journal of the American Statistical Association. 1999;94:496–509.
369 doi:<http://dx.doi.org/10.1080/01621459.1999.10474144>
- 370 24. Zürcher K, Mooser A, Anderegg N, Tymejczyk O, Couvillon MJ, Nash D, et al. Outcomes of HIV-
371 positive patients lost to follow-up in African treatment programmes. Trop Med Int Health.

- 372 2017;22: 375–387. doi:10.1111/tmi.12843
- 373 25. Geng EH, Odeny TA, Lyamuya R, Nakiwogga-Muwanga A, Diero L, Bwana M, et al. Retention in
374 Care and Patient-Reported Reasons for Undocumented Transfer or Stopping Care Among HIV-
375 Infected Patients on Antiretroviral Therapy in Eastern Africa: Application of a Sampling-Based
376 Approach. *Clin Infect Dis*. 2016;62: 935–944. doi:10.1093/cid/civ1004
- 377 26. Weigel R, Hochgesang M, Brinkhof MW, Hosseinipour MC, Boxshall M, Mhango E, et al.
378 Outcomes and associated risk factors of patients traced after being lost to follow-up from
379 antiretroviral treatment in Lilongwe, Malawi. *BMC Infect Dis*. 2011;11: 31. doi:10.1186/1471-
380 2334-11-31
- 381 27. Brinkhof MWG, Pujades-Rodriguez M, Egger M. Mortality of patients lost to follow-up in
382 antiretroviral treatment programmes in resource-limited settings: systematic review and
383 meta-analysis. *PLoS One*. 2009;4: e5790. doi:10.1371/journal.pone.0005790
- 384 28. Haas AD, Zaniewski E, Anderegg N, Ford N, Fox MP, Vinikoor M, et al. Retention and mortality
385 on antiretroviral therapy in sub-Saharan Africa: collaborative analyses of HIV treatment
386 programmes. *J Int AIDS Soc*. 2018;21. doi:10.1002/jia2.25084
- 387 29. Tweya H, Feldacker C, Estill J, Jahn A, Ng'ambi W, Ben-Smith A, et al. Are they really lost?
388 “true” status and reasons for treatment discontinuation among HIV infected patients on
389 antiretroviral therapy considered lost to follow up in Urban Malawi. *PLoS One*. 2013;8:
390 e75761. doi:10.1371/journal.pone.0075761
- 391 30. Zürcher K, Mooser A, Anderegg N, Tymejczyk O, Couvillon MJ, Nash D, et al. Outcomes of HIV-
392 positive patients lost to follow-up in African treatment programmes. *Trop Med Int Health*.
393 2017;22: 375–387. doi:10.1111/tmi.12843
- 394 31. Gwynn RC, Fawzy A, Viho I, Wu Y, Abrams EJ, Nash D. Risk factors for loss to follow-up prior to
395 ART initiation among patients enrolling in HIV care with CD4+ cell count ≥ 200 cells/ μL in the
396 multi-country MTCT-Plus Initiative. *BMC Health Serv Res*. 2015;15: 247. doi:10.1186/s12913-
397 015-0898-9

- 398 32. Koole O, Houben RM, Mzembe T, Van Boeckel TP, Kayange M, Jahn A, et al. Improved
399 retention of patients starting antiretroviral treatment in Karonga District, northern Malawi,
400 2005-2012. *J Acquir Immune Defic Syndr*. 2014;67: e27–e33.
401 doi:10.1097/QAI.0000000000000252
- 402 33. Tiruneh YM, Galárraga O, Genberg B, Wilson IB. Retention in Care among HIV-Infected Adults
403 in Ethiopia, 2005- 2011: A Mixed-Methods Study. *PLoS One*. 2016;11: e0156619.
404 doi:10.1371/journal.pone.0156619
- 405 34. Bucciardini R, Fragola V, Abegaz T, Lucattini S, Halifom A, Tadesse E, et al. Retention in Care of
406 Adult HIV Patients Initiating Antiretroviral Therapy in Tigray, Ethiopia: A Prospective
407 Observational Cohort Study. *PLoS One*. 2015;10: e0136117.
408 doi:10.1371/journal.pone.0136117
- 409 35. Koole O, Tsui S, Wabwire-Mangen F, Kwesigabo G, Menten J, Mulenga M, et al. Retention and
410 risk factors for attrition among adults in antiretroviral treatment programmes in Tanzania,
411 Uganda and Zambia. *Trop Med Int Health*. 2014;19: 1397–410. doi:10.1111/tmi.12386
- 412 36. Okoboi S, Ssali L, Yansaneh AI, Bakanda C, Birungi J, Nantume S, et al. Factors associated with
413 long-term antiretroviral therapy attrition among adolescents in rural Uganda: a retrospective
414 study. *J Int AIDS Soc*. 2016;19: 20841. Available:
415 <http://www.ncbi.nlm.nih.gov/pubmed/27443271>
- 416 37. Adejumo OA, Malee KM, Ryscavage P, Hunter SJ, Taiwo BO. Contemporary issues on the
417 epidemiology and antiretroviral adherence of HIV-infected adolescents in sub-Saharan Africa:
418 a narrative review. *J Int AIDS Soc*. 2015;18: 20049. Available:
419 <http://www.ncbi.nlm.nih.gov/pubmed/26385853>
- 420 38. Matyanga CMJ, Takarinda KC, Owiti P, Mutasa-Apollo T, Mugurungi O, Buruwe L, et al.
421 Outcomes of antiretroviral therapy among younger versus older adolescents and adults in an
422 urban clinic, Zimbabwe. *Public Heal action*. 2016;6: 97–104. doi:10.5588/pha.15.0077
- 423 39. Kranzer K, Bradley J, Musaaazi J, Nyathi M, Gunguwo H, Ndebele W, et al. Loss to follow-up

- 424 among children and adolescents growing up with HIV infection: age really matters. *J Int AIDS*
425 *Soc.* 2017;20: 21737. doi:10.7448/IAS.20.1.21737
- 426 40. Harrigan PR, Hogg RS, Dong WWY, Yip B, Wynhoven B, Woodward J, et al. Predictors of HIV
427 drug-resistance mutations in a large antiretroviral-naive cohort initiating triple antiretroviral
428 therapy. *J Infect Dis.* 2005;191: 339–47. doi:10.1086/427192
- 429 41. Nachega JB, Hislop M, Dowdy DW, Chaisson RE, Regensberg L, Maartens G. Adherence to
430 nonnucleoside reverse transcriptase inhibitor-based HIV therapy and virologic outcomes. *Ann*
431 *Intern Med.* 2007;146: 564–73. Available: <http://www.ncbi.nlm.nih.gov/pubmed/17438315>
- 432 42. Mills EJ, Lester R, Thorlund K, Lorenzi M, Muldoon K, Kanters S, et al. Interventions to
433 promote adherence to antiretroviral therapy in Africa: a network meta-analysis. *Lancet HIV.*
434 Elsevier Ltd; 2014;1: e104–11. doi:10.1016/S2352-3018(14)00003-4
- 435 43. Nachega JB, Skinner D, Jennings L, Magidson JF, Altice FL, Burke JG, et al. Acceptability and
436 feasibility of mHealth and community-based directly observed antiretroviral therapy to
437 prevent mother-to-child HIV transmission in South African pregnant women under Option B+:
438 an exploratory study. *Patient Prefer Adherence.* 2016;10: 683–90. doi:10.2147/PPA.S100002
- 439
440

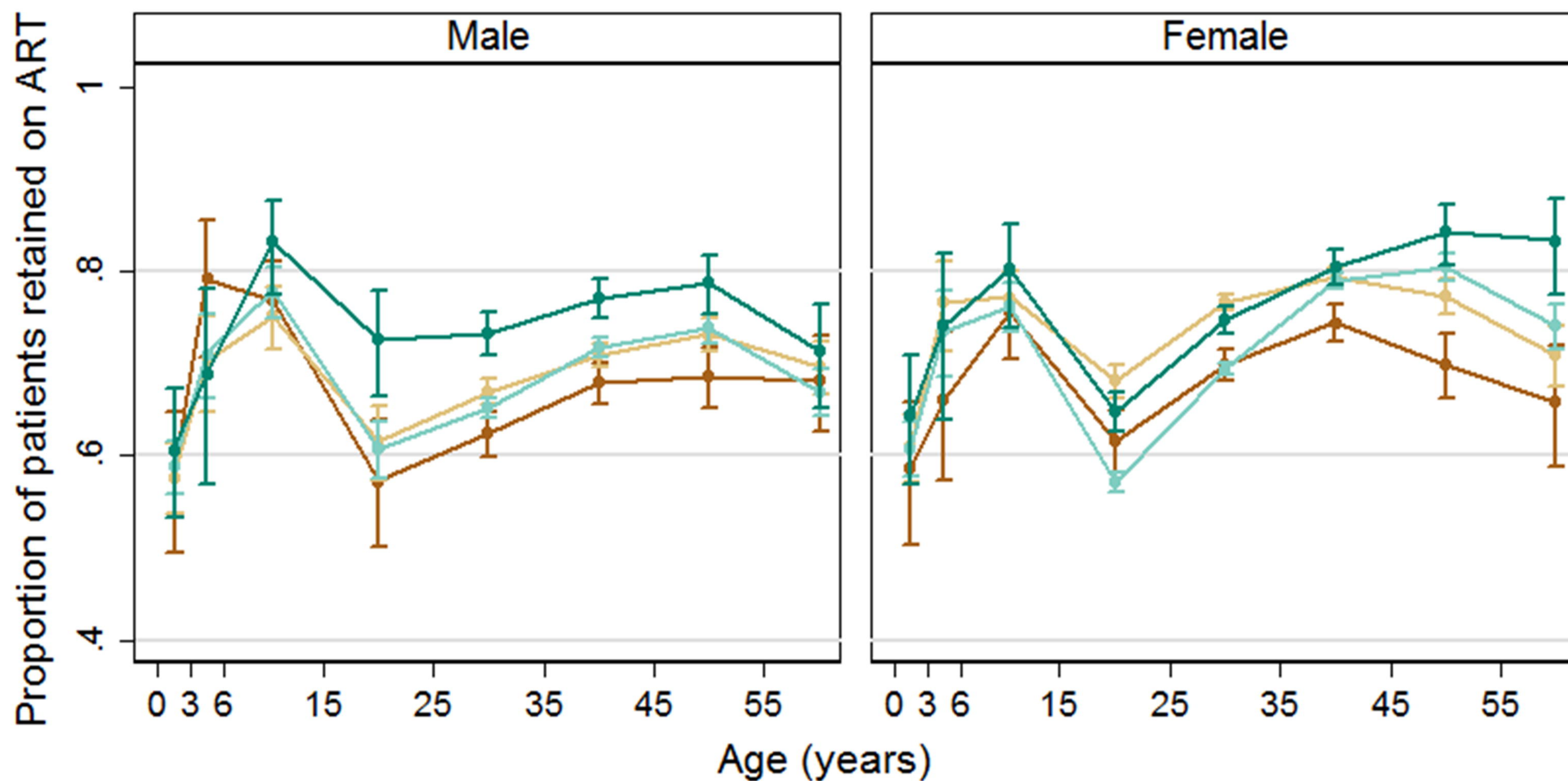
441 **Supporting Information**

442 **S1 Table. Malawi national guidelines 2003 – 2015**

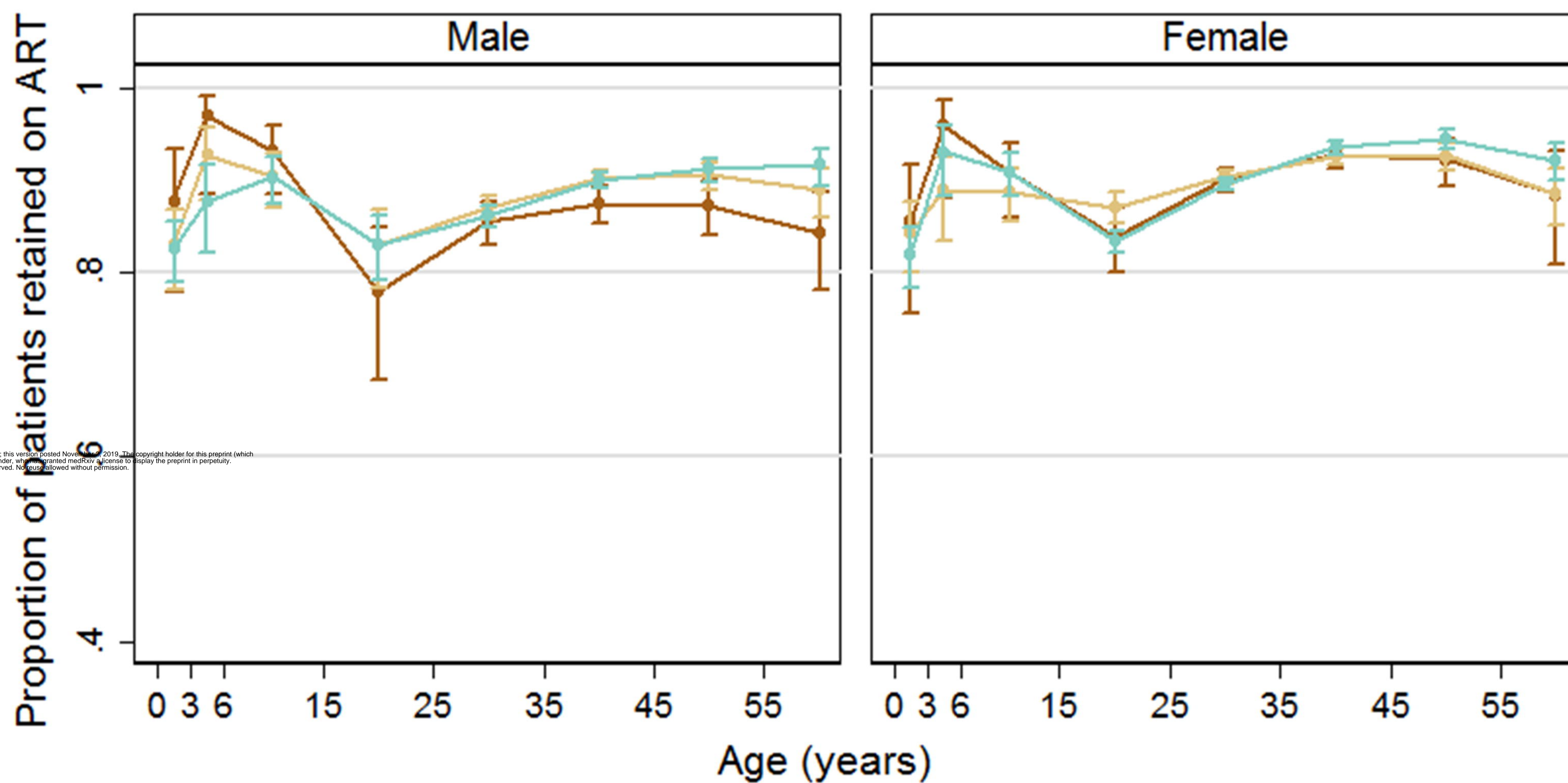
443 **S2 Table. Comparison of excluded and included patients.**

AUTHOR MANUSCRIPT

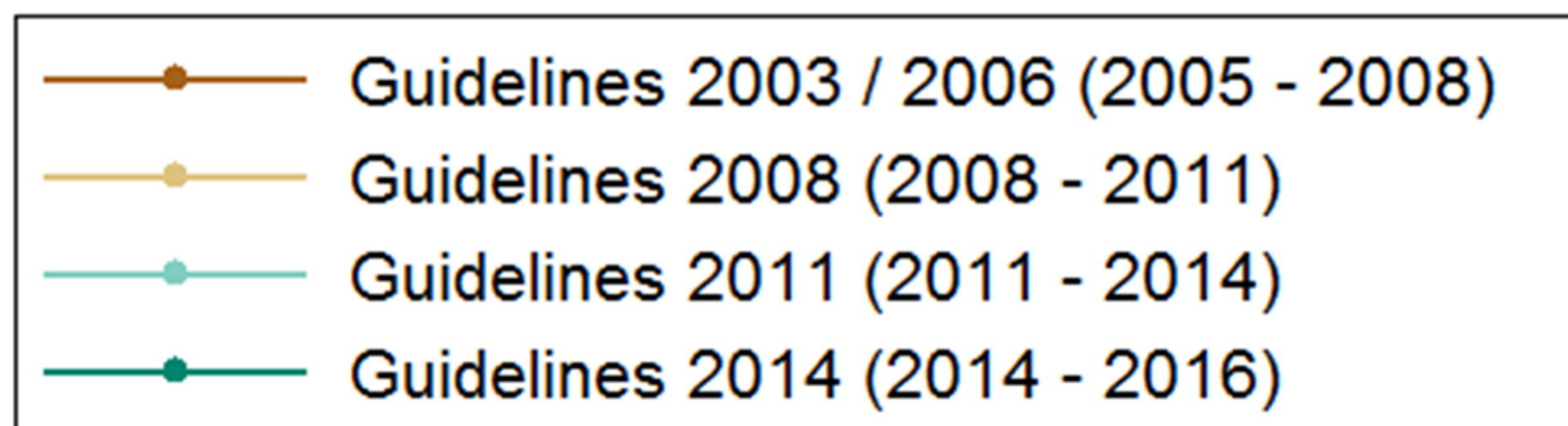
A



B

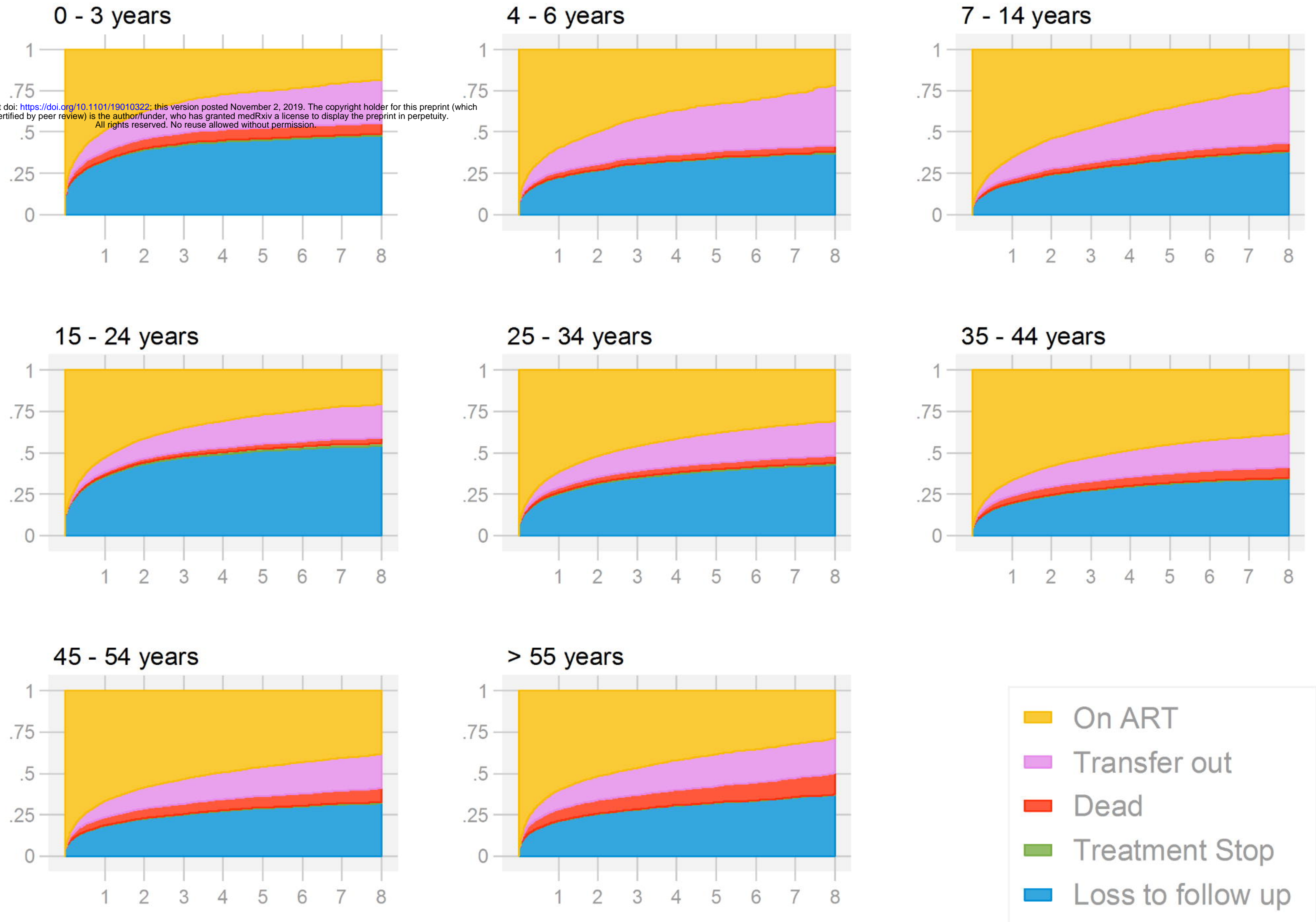


medRxiv preprint doi: <https://doi.org/10.1101/1901032>; this version posted November 1, 2019. The copyright holder for this preprint (which was not certified by peer review) is the author/funder, who has granted medRxiv a license to display the preprint in perpetuity. All rights reserved. No reuse allowed without permission.



Cumulative incidence of outcomes on ART

medRxiv preprint doi: <https://doi.org/10.1101/19010322>; this version posted November 2, 2019. The copyright holder for this preprint (which was not certified by peer review) is the author/funder, who has granted medRxiv a license to display the preprint in perpetuity. All rights reserved. No reuse allowed without permission.



Time from ART initiation (years)