

1 Mosquito exposure and malaria morbidity; a micro-level analysis of household mosquito  
2 populations and malaria in a population-based longitudinal cohort in western Kenya

3

4 *Running head: Micro-level malaria exposure & morbidity*

5 Summary: In this study, we measure the relationship between fine-scale spatio-temporal  
6 heterogeneity in exposure to infected and successfully-fed malaria vectors, the incidence of  
7 malaria, and their interaction with ITN use in a population-based cohort.

#### 8 **Authors and Affiliations**

9 Wendy Prudhomme O'Meara<sup>1,2,3</sup>, Ryan Simmons<sup>1,4</sup>, Paige Bullins<sup>1</sup>, Betsy Freedman<sup>2</sup>, Lucy Abel<sup>5</sup>,  
10 Judith Mangeni<sup>6</sup>, Steve M. Taylor<sup>1,2</sup>, Andrew A. Obala<sup>7</sup>

11 1. Duke Global Health Institute, Duke University, Durham, NC 27708

12 2. Department of Medicine, School of Medicine, Duke University, Durham, NC 27708

13 3. School of Public Health, College of Health Sciences, Moi University, Eldoret, Kenya

14 4. Department of Biostatistics and Bioinformatics, School of Medicine, Duke University,  
15 Durham, NC 27708

16 5. Academic Model Providing Access to Healthcare, Moi Teaching and Referral Hospital,  
17 Eldoret, Kenya

18 6. School of Nursing, College of Health Sciences, Moi University, Eldoret, Kenya

19 7. School of Medicine, College of Health Sciences, Moi University, Eldoret, Kenya

20

21 **Corresponding Author**

22 Wendy Prudhomme O’Meara PhD, Associate Professor in Medicine at Duke University School of  
23 Medicine and Associate Research Professor of Global Health at Duke Global Health Institute,  
24 Duke University, Durham, NC 27708; wpo@duke.edu; 919-681-7711

25 **Abstract**

26  
27 **Background:** Malaria morbidity is highly overdispersed in the population. Fine-scale differences  
28 in mosquito exposure may partially explain this heterogeneity. However, exposure variability  
29 has not been related to individual malaria outcomes.

30 **Methods:** We established a cohort of 38 households to explore the effect of household-level  
31 mosquito exposure and individual insecticide treated net(ITN) use on relative risk(RR) of  
32 diagnostically-confirmed malaria. We conducted monthly active surveillance (n=254; 2,624  
33 person-months) and weekly mosquito collection in all households (2,092 household-days of  
34 collection). We used molecular techniques to confirm human blood feeding and exposure to  
35 infectious mosquitoes.

36 **Results:** Of 1,494 female anopheles (89.8% *Anopheles gambiae s.l.*). 88.3% were fed, 51.9% had  
37 a human bloodmeal, and 9.2% were sporozoite-infected. 168 laboratory-confirmed malaria  
38 episodes were reported (incidence rate 0.064 episodes per person-month at risk, 95%  
39 confidence interval [CI]:0.055,0.074). Malaria risk was directly associated with exposure to  
40 sporozoite-infected mosquitoes (RR=1.24, 95%CI:1.11,1.38). No direct effect was measured  
41 between ITN use and malaria morbidity, however, ITN use did moderate the effect of mosquito  
42 exposure on morbidity.

43 **Conclusions:** Malaria risk increases linearly with vector density and feeding success for persons  
44 with low ITN use. In contrast, malaria risk among high ITN users is consistently low and  
45 insensitive to variation in mosquito exposure.

46  
47 **Key words:** malaria, anopheles, cohort, insecticide treated net

48  
49 **Word count**  
50 Abstract: 200  
51 Manuscript: 2871

## 52 **Background**

53

54 Cases of malaria are highly over-dispersed in human populations [1-4]: as little as 20% of  
55 individuals experience 80% of the disease burden. The reason for this heterogeneity is  
56 undoubtedly multifactorial, and even after adjusting for age and behavioral differences such as  
57 ITN use, the imbalance remains [2-4]. Quantifying the heterogeneity attributable to variability in  
58 entomological exposure requires fine-scale measurement of both mosquito populations and  
59 malaria incidence at a household or individual level. This has rarely been done and instead human  
60 cohort studies that incorporate exposure substitute either local infection prevalence in humans  
61 as a proxy for exposure [3, 5] or extrapolate entomological indicators from sentinel villages or  
62 households [4, 6-9]. Both approaches have limitations with regards to understanding the  
63 relationship between exposure and disease risk owing to the fact that disease risk is  
64 heterogeneous below the village level [10-13]. Such studies present inconsistent findings  
65 regarding exposure and incidence. Although cross-sectional studies of vector biting  
66 heterogeneity demonstrate significant over-dispersion in exposure to mosquito bites, this has  
67 not been linked to subsequent infection or disease distribution [14].

68

69 Recent studies support the role of mosquito exposure heterogeneity in understanding evolving  
70 malaria transmission dynamics, particularly in areas where endemicity is declining [14-18].  
71 Mathematical models predict that exposure heterogeneity could reduce the effectiveness of  
72 malaria control measures [19]. Linking individual mosquito exposure to morbidity outcomes

73 would enable more accurate estimation of the effects of vector control interventions at the  
74 population level. However, cohort studies rarely measure fine-scale entomological exposure.

75  
76 Here we offer a high-resolution picture of individual-level incidence of symptomatic disease  
77 related to weekly household mosquito exposure metrics. We conducted a longitudinal study of  
78 36 households in a moderate-transmission setting in Western Kenya in which we collected  
79 weekly indoor-resting mosquitoes and passively-detected cases of malaria. We hypothesized that  
80 excess variability in individual malaria risk would be at least partly explained by more precise  
81 measures of mosquito exposure and that the relationship between disease and mosquito  
82 exposure would increase with increasing specificity of exposure metric; from vector abundance,  
83 to feeding success, to human biting rate, and finally vector infectiousness.

84

## 85 **Methods**

### 86 *Study site*

87 The study was carried out in Webuye East and West sub-counties located in western Kenya  
88 approximately 400 kilometers northwest of Nairobi and 60 from the border with Uganda. The  
89 sub-counties are rural and most families engage in small-scale farming and animal husbandry.  
90 Very few families have access to amenities such as municipal water or electricity (<5%) and 53%  
91 live below the poverty line [20]. There is one small town center along the main highway that  
92 bisects the county. Malaria transmission is moderate and perennial with two seasonal peaks after  
93 the long rains (May-June) and the short rains (Sept-October) although the timing and intensity of  
94 the transmission peaks can vary from year to year. Vector control interventions are limited to ITN

95 distribution and use; IRS has not taken place in this area and the use of individual protective  
96 measures such as sprays and coils is very uncommon.

97

#### 98 *Cohort*

99 In July 2017, we established a cohort of 36 households in three villages that exhibited different  
100 levels of malaria transmission based on previous work [21, 22]. We enrolled an index household  
101 at random and then neighboring households radiating outwards until 12 households were  
102 enrolled per village in a natural grouping. Two households were replaced with neighboring  
103 households when the entire household migrated. All residents older than 12 months who  
104 regularly slept in the household were enrolled. Children <12 months at baseline were enrolled  
105 after they passed their first birthday. A household is defined as a group of people who share  
106 cooking arrangements and may consist of one or more buildings grouped together in a  
107 compound. Information about building construction, sleeping spaces, and ITN ownership was  
108 collected at enrollment.

109

#### 110 *Cohort surveillance*

111 At baseline, we registered all household members and collected dried blood spots from finger  
112 pricks. Each month, we recorded data about bednet use in the preceding week and illness in the  
113 preceding one month from all consenting household members over the age of 12 months. In  
114 addition, all household members were invited to contact the study team whenever they  
115 experienced a malaria-like illness. When contacted, study staff visited the home to test the  
116 participant for malaria using a rapid diagnostic test (Carestart © Malaria HRP2 Pf from Accessbio).

117 If the participant had a negative test, they were referred with the test results to the nearest  
118 health facility. If the test was a positive, the participant collected quality-assured ACT from the  
119 local pharmacy at no charge to the participant.

120

#### 121 *Mosquito collection and identification*

122 Once per week, on the same day each week, the study team visited each household early in the  
123 morning to collect indoor resting mosquitoes via aspiration with Prokopacks (John W. Hock  
124 Company). Participants were asked to leave windows and doors closed until the team arrived.  
125 Mosquitoes were stored in collection cups in coolboxes with icepacks until they were transported  
126 back to the laboratory. Mosquitoes were separated by genus and sex, and females were graded  
127 according to their abdominal status. Female Anopheles were imaged under magnification for  
128 post-hoc speciation, first by study staff and then by a senior entomologist in a subset of 25%.  
129 After imaging, mosquitoes were dissected between the thorax and abdomen, and these parts  
130 were stored in separate tubes packed with desiccant at room temperature.

131

#### 132 *Molecular detection of parasites and human blood in mosquitoes*

133 Mosquito specimens were manually disrupted in individual tubes and then genomic DNA was  
134 extracted using a Chelex-100 protocol. Each gDNA extract was tested in a duplex TaqMan real-  
135 time PCR assay targeting both *P. falciparum* and human beta-tubulin [23]. Samples were tested  
136 in duplicate in 384-well plates on an ABI Quantstudio 6 platform; threshold lines were set  
137 manually in the exponential phase of amplification. Reaction plates were prepared in dedicated  
138 workspaces with filtered pipet tips, and each included *P. falciparum* gDNA and human DNA as

139 positive controls and molecular-grade water as a negative control. Genomic DNA was extracted  
140 from human dried blood spots and tested in the same real-time PCR assay.

141

#### 142 *Data analysis*

143 The primary outcome was malaria, which was defined as self-reported illness leading to a positive  
144 malaria RDT result in the preceding 30 days. Test results were confirmed by reviewing the medical  
145 record whenever possible. **Following a positive test, individuals were censored for 21 days.** The  
146 primary objective of our analysis was to estimate the impact of household-level mosquito indices  
147 on an individual's risk of malaria. We investigated the impact of four different mosquito indices,  
148 calculated for each household in each month as the sum of the counts from weekly mosquito  
149 collection visits: the total number of 1) female Anopheles, 2) blood-fed female Anopheles, 3)  
150 female Anopheles mosquitoes collected with human blood detected by PCR in the abdomen, and  
151 4) female Anopheles with *P. falciparum* sporozoites detected in the head. Due to collinearity  
152 between the exposures (e.g. the number of sporozoite positive mosquitoes being a subset of the  
153 total number of mosquitoes collected, etc.), separate models were fit for the effect of each  
154 exposure on each morbidity outcome.

155

156 We used generalized linear mixed models (GLMM), with the outcome defined as the presence or  
157 absence of malaria for each individual at each follow-up month. To estimate relative risks, we  
158 used a robust (modified) Poisson model [24]. To account for clustering by household, the model  
159 included a random intercept on household with a compound symmetric covariance structure  
160 (note that this assumes household clustering is constant over time). To account for clustering



161 within individual over time, the model included a random intercept on individual, nested within  
162 household, with a homogenous first-order autoregressive covariance structure. Each model  
163 included a fixed-effect for village, age at baseline (coded as a categorical variable with five-levels:  
164  $\leq 1$ , 1-5, 6-10, 11-17, and  $\geq 18$  years), gender, and number of nights of ITN use in the past week  
165 (dichotomized as  $\geq 6$  and  $< 6$  nights). Additionally, we investigated interactions between the  
166 mosquito exposure variables and ITN use.

167  
168 In order to quantify the amount of variability in individual incidence that could be explained by  
169 the model covariates, we sequentially estimated marginal  $R^2$  for generalized linear mixed models,  
170 following the method of [25]. Marginal  $R^2$  allows for assessment of the impact of the fixed effects  
171 independent of the random effect structure of the model. Starting with the null model, we added  
172 covariates sequentially in order of the magnitude of their fixed effect from the full model, until  
173 all demographic adjustment factors were included. Finally, each mosquito exposure variable, and  
174 its interaction with ITN use, were added one at a time to this adjusted model.

175  
176 Secondary exploratory objectives included investigating the impact of including in the model  
177 covariates related to individual travel history (e.g. using a bed-net while traveling, traveling to a  
178 malaria endemic area, etc.), the number of hours spent under a bed-net each night, and the  
179 number of individuals living in the household.

180  
181 *Research ethics and consent*

182 All heads of household were asked to consent for participation in mosquito collection and  
183 household data collection. Each individual provided consent for monthly dried blood spot  
184 collection and RDT testing. A parent or legal guardian provided consent on behalf of a child under  
185 18 years of age. Children ten years and above were also asked to provide assent for participation.  
186 The study was reviewed and approved by Duke University Institutional Review Board and Moi  
187 University and Moi Teaching and Referral Hospital Institutional Research Ethics Committee.

188

## 189 **Results**

190 From June 12, 2017 until July 31, 2018, 254 participants from 38 households were followed by  
191 monthly active surveillance and weekly entomological surveillance for a total of 2,624 person  
192 months of observation. The cohort demographics are described in Table 1. Sixty percent of  
193 participants were children less than 18 years of age at enrollment and each person provided an  
194 average of 11.1 months of follow-up. At enrollment, 54.9% (133/242) of participants were  
195 infected with *P. falciparum* as detected by a highly-sensitive PCR assay. 72% of participants had  
196 an ITN for their sleeping space; this proportion was slightly lower in Village S (59%) compared to  
197 Village K and M (82% and 78%, respectively). In 76.7% (2,013/2,624) of monthly follow-ups,  
198 participants reported sleeping under their net each day of the previous seven days.

199

### 200 *Mosquito indices*

201 Across 2,092 household-days, we collected a total of 1,494 female anopheles mosquitoes (Table  
202 2, Figure 1). Nearly 90% (n=1,023) were identified as *Anopheles gambiae* group and this  
203 proportion varied only slightly across the villages. Village M recorded the highest number of

204 malaria vectors overall (66.5 per household) and the highest proportion of *An. funestus* (9.3%).  
205 Other Anopheles spp. were observed at low frequencies. By microscopic evaluation, the majority  
206 of mosquitoes had recently fed: 11.2% (n=168) were freshly bloodfed, 31.9% (n=477) were half  
207 gravid, and 39% (n=587) were gravid. In PCR testing, we detected human blood in 51.9% of all  
208 abdomens (n=776), including 79.8% (n=134) of the freshly bloodfed specimens. The prevalence  
209 of *P. falciparum* sporozoites in the heads of female Anopheles was 9.2% (n=134). The proportions  
210 of mosquitoes with human blood or sporozoites did not differ by species or village.

211

### 212 *Malaria incidence*

213 During 2,624 person-months of follow-up, there were 168 cases of malaria in 107 people (Figure  
214 1), yielding an overall incidence rate of 0.064 (95% CI: 0.055, 0.075) cases per person-month.  
215 Among these 107 people, 66 (61.7%) reported only a single episode, 26 (24.3%) reported two  
216 episodes, and 15 (14.0%) reported 3 or more episodes (the maximum was 5). The median number  
217 of days between sequential episodes was 37 (IQR: 62). Overall, 30% (n=74) of participants  
218 experienced 80% (n=135) of episodes (Supplemental Figure 1) and 58% (n=147) of participants  
219 never experienced an episode of malaria.

220

### 221 *Associations between mosquito indices and malaria*

222 We estimated the relative risk of malaria in models without and with each of our mosquito  
223 indices (Table 3). As expected, the risk of malaria declined with increasing age, and there was no  
224 association with gender (RR 1.00; 95% CI 0.72 – 1.40). Relative to high ITN users, those with low  
225 use were at similar risk (RR 1.16; 95% CI 0.76 – 1.79). In models with individual mosquito indices,

226 malaria risk was not significantly associated with the monthly household abundance of malaria  
227 vectors (RR 1.02; 95% CI 0.97 – 1.08) nor the number of mosquitoes who had human blood in  
228 their abdomen (RR 1.04; 95% CI 0.97 – 1.12). However, the risk of malaria increased by 24% with  
229 each additional infectious mosquito collected the previous month (RR 1.24; 95% CI 1.11 – 1.38).

230

231 Because high ITN use was not associated with a reduced risk of malaria, we hypothesized that  
232 ITN use may modify the effect of mosquito exposure on malaria risk. We tested this hypothesis  
233 by examining the interaction between ITN use and each mosquito exposure variable (Table 4).

234 We demonstrate significant correlation between both mosquito abundance and malaria risk, and  
235 mosquito feeding success and malaria risk, in models that include the exposure:ITN interaction  
236 term. The relative risk of malaria among high ITN users compared to low ITN users decreased by  
237 6% (RR=0.94, 95%CI: 0.89-0.99) for each additional anopheles mosquito in the household and by

238 10% (RR=0.90, 95%CI: 0.82-0.99) for each additional human-fed mosquito. ITN use now appears  
239 positively correlated with malaria risk in models that include the interaction term, however, we  
240 can understand this when we examine the results graphically (Figure 2). At low mosquito

241 abundance, individuals with high ITN use have equal or slightly elevated malaria risk compared  
242 to those who have lower ITN use. However, the risk of malaria increases linearly with increasing  
243 mosquito exposure among those with low ITN use, but remains low and constant for those who

244 use an ITN consistently. Similar trends are seen for mosquito feeding success and human feeding  
245 success.

246

247 In analyses of marginal  $R^2$  with incorporation of mosquito indices in malaria risk models, age,  
248 household size, and exposure to sporozoite-infected mosquitoes accounted for the largest  
249 increase in  $R^2$  (2.6%, 2.9% and 2.3%, respectively; Figure 3). Other mosquito exposures accounted  
250 for only a very small proportion of the heterogeneity. Despite the small absolute change in  $R^2$ , it  
251 is interesting to note that household exposure to infectious mosquitoes and age contribute  
252 nearly equally to explaining the distribution of malaria incidence in the population.

253

#### 254 **Discussion:**

255 In this high-resolution paired entomological and epidemiological cohort, we measured weekly  
256 household-level mosquito exposure alongside laboratory-confirmed malaria episodes in a  
257 population-based sample of 254 individuals in 38 households. We show that, among putative  
258 entomological indices, the risk of malaria in humans is mediated by neither the abundance of  
259 mosquitoes overall nor those that are blood-fed mosquitoes but rather only by the risk of  
260 malaria in mosquitoes (sporozoites). We further demonstrate an interaction between the effect  
261 of ITN use and mosquito exposure on malaria episodes, in that, compared to suboptimal ITN  
262 use, high ITN use attenuates the deleterious effects of vector density and feeding success on  
263 the risk of malaria.

264

265 The relationship between mosquito exposure and human malaria risk is difficult to quantify due  
266 to the time lag between an infectious bite and patent infection, and the uncertainty in assigning  
267 individual exposure based on entomological variables. Some studies compare population based  
268 measures of disease prevalence or incidence with vector density observed at sentinel locations

269 and are essentially ecological comparisons of two populations over time [6, 15]. Alternatively,  
270 values from sentinel households are locally extrapolated to unmeasured households [4, 7-9].  
271 Although we fall short of assigning individual exposure, which may vary within a household [26,  
272 27], our weekly household-level entomological measurements give new insight into the nature  
273 of the relationship between mosquito exposure and disease and a means to estimate the  
274 change in risk under different exposure control strategies. For example, since both the effect of  
275 mosquito abundance and feeding success on malaria morbidity are moderated by individual ITN  
276 use, we can estimate a personal protective efficacy of ITN use of up to 30% as exposure  
277 increases. In households where as few as 8 mosquitoes were collected in a month, ITNs offer  
278 measurable protection relative to those who do not use an ITN. The low, but non-zero, malaria  
279 risk experienced by consistent ITN users may reflect exposure outside of the net, due to  
280 modified mosquito behaviors such as biting early in the evening or outdoors [28-32].  
281  
282 Our findings relating risk of malaria to basic demographic factors are consistent with previous  
283 studies. We and others [3, 4, 33-35] measure declining incidence of clinical malaria with  
284 increasing age. The observation that increasing household size is associated with decreasing  
285 individual risk can be interpreted as reduced individual risk of exposure when more hosts are  
286 available. Although individual ITN use has been associated with reduced risk of malaria in  
287 longitudinal studies of young children in the context of high transmission and low ITN coverage  
288 [1, 13], we and others fail to detect a direct, individual protective effect [3, 7]. Overall,  
289 behavioral and demographic differences explain relatively little of the heterogeneity in malaria  
290 cases. After incorporating entomological exposures and the effect of ITN use on those

291 exposures, the proportional amount of heterogeneity explained increased by 36%, however the  
292 absolute value of  $R^2$  remained small.

293

294 There are notable limitations to this study. First, the time span is relatively short (13 months); a  
295 longer duration of observation would be desirable to capture important annual variation in  
296 transmission and exposure. Second, the malaria morbidity outcome is based on recall over a  
297 one-month period. However, we mitigated possible recall bias and missing information by  
298 reviewing medical records to confirm test results and ensuring affordably, timely and accurate  
299 malaria diagnosis was available to participants.

300

301 Despite these limitations, we demonstrate that infections in mosquitoes within a household are  
302 a direct risk factor for infections in individuals. This risk is not mitigated by ITN use. Other  
303 entomological exposures measured at the household-level, including malaria vector density and  
304 human-fed anopheles, increase the risk of malaria episodes differentially in individuals who do  
305 not use an ITN consistently. We show that individual protective efficacy of ITNs scales with  
306 exposure and fine-scaled entomological measures can explain as much heterogeneity in malaria  
307 risk in the population as age.

308

309 **Footnote page**

310

311 **Funding source:** Research reported in this publication was supported by the National Institute  
312 of Allergy and Infectious Diseases of the National Institutes of Health under Award Number  
313 R21AI126024. The content is solely the responsibility of the authors and does not necessarily  
314 represent the official views of the National Institutes of Health

315

316 **Acknowledgements:** We would like to thank our exceptional field team (I. Khaoya, L. Marango,  
317 E. Mukeli, E. Nalianya, J. Namae, L. Nukewa, E. Wamalwa, and A. Wekesa) and all the families  
318 who gave their valuable time for this study.

319

320 **Conflict of interest disclosure:** The authors declare no conflicts of interest exist.

321

322

323



**Table 1:** Participant characteristics, baseline bednet use, follow-up time and malaria episodes reported by village and total numbers

	Village K	Village M	Village S	Total
<b>Demographics</b>				
Households	12	13	13	38
Participants	80	78	96	254
Median Household size (range)	6.5 (5-13)	6 (3-15)	8 (3-14)	6.5 (3-15)
Female	45 (51.7%)	46 (57.5%)	57 (57.0%)	148 (55.4%)
<1 years	2 (2.5%)	3 (3.9%)	5 (5.2%)	10 (3.9%)
1-5 years	13 (16.3%)	12 (15.4%)	9 (9.4%)	34 (13.4%)
6-10 years	17 (21.3%)	16 (20.5%)	24 (25.0%)	57 (22.4%)
11-17 years	16 (20.0%)	13 (16.7%)	22 (22.9%)	51 (20.8%)
18 and above	32 (40.0%)	34 (43.6%)	36 (37.5%)	102 (40.2%)
<b>ITN coverage</b>				
Sleeps in space with an ITN <sup>a</sup>	64/78 (82%)	59/76 (78%)	54/92 (59%)	177/246 (72%)
Sleeps in space with untreated net <sup>a</sup>	3/78 (3.8%)	0	0	3/246 (1.2%)
Slept under ITN last night (baseline)	67/80 (83.8%)	58/78 (74.4%)	60/96 (62.5%)	185/254 (72.8%)
<b>Observations</b>				
Person months	879	808	946	2633
Average person months per participant (SD)	11.42 (3.69)	11.22 (7.60)	10.63 (4.08)	11.06 (5.29)
<b>Malaria morbidity</b>				
Suspected malaria illness events	136	145	152	433

Suspected malaria episodes with positive malaria test	51 (37.5%)	55 (37.9%)	62 (40.8%)	168 (38.8%)
---	------------	------------	------------	-------------

324 <sup>a</sup>2 people in Village K, 2 in village M and 4 in village S were missing sleeping space information

**Table 2:** Abundance and characteristics of anopheles mosquitoes collected in the cohort households

	Village K	Village M	Village S	Total
No. of households				
Total female <i>Anoph.</i> collected	404	858	232	1494
Anopheles per HH, mean (range)	33.7 (8-72)	66 (7-198)	17.8 (4-45)	38.4 (4-201)
Microscopic analysis, no. (%)				
Unfed	67 (16.7%)	81 (9.4%)	20 (8.6%)	168 (11.2%)
Freshly fed	111 (27.6%)	297 (34.6%)	69 (29.7%)	477 (31.9%)
Half gravid	165 (41.0%)	320 (37.3%)	102 (44.0%)	587 (39.3%)
Gravid	58 (14.4%)	158 (18.4%)	39 (16.8%)	255 (17.1%)
Undetermined	3 (0.7%)	2 (0.2%)	2 (0.9%)	7 (0.5%)
Human blood in abdomen by PCR, % (n/N)	53.1 (207/390)	53.5 (447/835)	54.7 (122/223)	53.6 (776/1448)
<i>P. falciparum</i> sporozoites, % (n/N)	10.2 (40/393)	9.3 (78/839)	7.0 (16/230)	9.2 (134/1462)
Species <sup>1</sup>	319	631	189	1139
<i>An. gambiae s.l</i>	298 (93.4%)	544 (86.2%)	181 (95.8%)	1023 (89.8%)
<i>An. funestus complex</i>	14 (4.4%)	55 (8.7%)	2 (1.1%)	71 (6.2%)
<i>An. demeilloni</i>	3 (0.9%)	6 (1.0%)	3 (1.6%)	12 (1.1%)
<i>An. pretoriensis</i>	1 (0.3%)	11 (1.7%)	1 (0.5%)	13 (1.2%)
Other <sup>2</sup>	3 (1.0%)	15 (2.4)	2 (1.1%)	20 (1.8%)

325

326 <sup>1</sup> 355 mosquitoes were not identified to species due to technical problems with the microscope.

327 Totals and percentages here only include identified mosquitoes.

328 <sup>2</sup> Other species include *An. maculipalpis* (3), *An. salbaii* (4), *An. rufipes* (2), *An. dancalicus* (5),

329 *An. coustani* (6)

330

331 **Table 3:** Relative risk of malaria in the prior 30d in base model and in models including  
 332 mosquito indices. The effect of monthly individual ITN use and monthly household-level  
 333 mosquito exposure on the relative risk of malaria in the last 30 days. Each model is adjusted for  
 334 household and individual-level demographic characteristics.

	Base model	Individual mosquito index models			
		1	2	3	4
Village (Kinesamo vs. Sitabich)	0.70 (0.43,1.14)	0.68 (0.42,1.10)	0.68 (0.42,1.11)	0.68 (0.42,1.1)	0.63 (0.39,1.00)
Village (Maruti vs. Sitabich)	0.91 (0.51,1.62)	0.81 (0.43,1.53)	0.81 (0.43,1.55)	0.81 (0.43,1.51)	0.77 (0.41,1.42)
<1 yrs	1.63 (0.45, 5.86)	1.63 (0.45, 5.82)	1.62 (0.45, 5.81)	1.62 (0.45, 5.82)	1.60 (0.45, 5.72)
1-5 yrs	<b>2.10</b> <b>(1.29, 3.40)</b>	<b>2.08</b> <b>(1.28, 3.38)</b>	<b>2.08</b> <b>(1.28, 3.38)</b>	<b>2.08</b> <b>(1.28, 3.38)</b>	<b>2.09</b> <b>(1.29, 3.38)</b>
6-10 yrs	1.55 (0.99, 2.42)	<b>1.58</b> <b>(1.01, 2.47)</b>	<b>1.58</b> <b>(1.01, 2.47)</b>	<b>1.58</b> <b>(1.01, 2.48)</b>	<b>1.60</b> <b>(1.03, 2.49)</b>
11-17 yrs	1.16 (0.66, 2.02)	1.17 (0.67, 2.03)	1.17 (0.67, 2.03)	1.17 (0.67, 2.03)	1.19 (0.68, 2.07)
18+ yrs	<i>Ref</i>	<i>Ref</i>	<i>Ref</i>	<i>Ref</i>	<i>Ref</i>
Male (vs. Female)	1.00 (0.72,1.40)	1.01 (0.72,1.42)	1.01 (0.72,1.42)	1.01 (0.72,1.42)	1 (0.72,1.39)
High ITN use (vs. Low)	1.16 (0.76,1.79)	1.21 (0.78,1.87)	1.21 (0.78,1.88)	1.21 (0.79,1.86)	1.43 (0.91,2.24)
No. of household members	<b>0.91</b> <b>(0.83,0.99)</b>	<b>0.91</b> <b>(0.83,0.99)</b>	<b>0.91</b> <b>(0.83,0.99)</b>	<b>0.91</b> <b>(0.83,0.99)</b>	<b>0.9</b> <b>(0.82,0.98)</b>

<b>No. of Anoph. mosquitoes</b>		<b>1.02</b> <b>(0.97,1.08)</b>			
<b>No. Bloodfed Anoph. mosquitoes</b>			<b>1.03</b> <b>(0.97,1.08)</b>		
<b>No. Human bloodfed Anoph. mosquitoes</b>				<b>1.04</b> <b>(0.97,1.12)</b>	
<b>No. Sporozoite positive mosquitoes</b>					<b>1.24</b> <b>(1.11,1.38)</b>

335

336

337  
 338 **Table 4:** The effect of individual ITN use, mosquito exposure, and the interaction between ITN  
 339 use and mosquito exposure on the relative risk of malaria in the last 30 days. Each column  
 340 represents a separate model adjusted for age, household size, gender, and village.  
 341

<b>Relative risk of malaria in the last 30 days</b>	<b>Model 1</b>	<b>Model 2</b>	<b>Model 3</b>	<b>Model 4</b>
ITN Use (High vs. Low)	<b>1.69</b> <b>(1.05, 2.72)</b>	<b>1.66</b> <b>(1.04, 2.64)</b>	<b>1.71</b> <b>(1.07, 2.74)</b>	1.44 (0.90, 2.30)
<b>Total # of Anoph. Mosquitoes</b>	<b>1.08</b> <b>(1.013 1.12)</b>			
<b># of Fed Anoph. Mosquitoes</b>		<b>1.08</b> <b>(1.03, 1.13)</b>		
<b># of Anoph. Mosquitoes Fed on Human Blood</b>			<b>1.13</b> <b>(1.04, 1.22)</b>	
<b># of Sporozoite Positive Anoph. Mosquitoes</b>				<b>1.24</b> <b>(1.14, 1.36)</b>
ITN Use * Exposure Interaction	<b>0.94</b> <b>(0.89, 0.99)</b>	<b>0.94</b> <b>(0.88, 0.99)</b>	<b>0.90</b> <b>(0.82, 0.99)</b>	0.99 (0.85, 1.16)

342  
 343  
 344

345

346

347 **References**

- 348 1. Clark TD, Greenhouse B, Njama-Meya D, et al. Factors determining the heterogeneity of  
349 malaria incidence in children in Kampala, Uganda. *The Journal of infectious diseases* **2008**;  
350 198:393-400.
- 351 2. Mwangi TW, Fegan G, Williams TN, Kinyanjui SM, Snow RW, Marsh K. Evidence for over-  
352 dispersion in the distribution of clinical malaria episodes in children. *PloS one* **2008**; 3:e2196.
- 353 3. Ndungu FM, Marsh K, Fegan G, et al. Identifying children with excess malaria episodes after  
354 adjusting for variation in exposure: identification from a longitudinal study using statistical  
355 count models. *BMC medicine* **2015**; 13:183.
- 356 4. Rogier C, Tall A, Diagne N, Fontenille D, Spiegel A, Trape JF. *Plasmodium falciparum* clinical  
357 malaria: lessons from longitudinal studies in Senegal. *Parassitologia* **1999**; 41:255-9.
- 358 5. Olotu A, Fegan G, Wambua J, et al. Estimating individual exposure to malaria using local  
359 prevalence of malaria infection in the field. *PloS one* **2012**; 7:e32929.
- 360 6. Beier JC, Oster CN, Onyango FK, et al. *Plasmodium falciparum* incidence relative to  
361 entomologic inoculation rates at a site proposed for testing malaria vaccines in western Kenya.  
362 *The American journal of tropical medicine and hygiene* **1994**; 50:529-36.
- 363 7. Degefa T, Zeynudin A, Godesso A, et al. Malaria incidence and assessment of entomological  
364 indices among resettled communities in Ethiopia: a longitudinal study. *Malaria journal* **2015**;  
365 14:24.
- 366 8. Smith DL, Dushoff J, Snow RW, Hay SI. The entomological inoculation rate and *Plasmodium*  
367 *falciparum* infection in African children. *Nature* **2005**; 438:492-5.



- 368 9. Smith T, Maire N, Dietz K, et al. Relationship between the entomologic inoculation rate and  
369 the force of infection for Plasmodium falciparum malaria. The American journal of tropical  
370 medicine and hygiene **2006**; 75:11-8.
- 371 10. Bejon P, Williams TN, Nyundo C, et al. A micro-epidemiological analysis of febrile malaria in  
372 Coastal Kenya showing hotspots within hotspots. eLife **2014**; 3:e02130.
- 373 11. Brooker S, Clarke S, Njagi JK, et al. Spatial clustering of malaria and associated risk factors  
374 during an epidemic in a highland area of western Kenya. Tropical medicine & international  
375 health : TM & IH **2004**; 9:757-66.
- 376 12. Gaudart J, Poudiougou B, Dicko A, et al. Space-time clustering of childhood malaria at the  
377 household level: a dynamic cohort in a Mali village. BMC public health **2006**; 6:286.
- 378 13. Kreuels B, Kobbe R, Adjei S, et al. Spatial variation of malaria incidence in young children  
379 from a geographically homogeneous area with high endemicity. The Journal of infectious  
380 diseases **2008**; 197:85-93.
- 381 14. Guelbeogo WM, Goncalves BP, Grignard L, et al. Variation in natural exposure to anopheles  
382 mosquitoes and its effects on malaria transmission. eLife **2018**; 7.
- 383 15. Churcher TS, Trape JF, Cohuet A. Human-to-mosquito transmission efficiency increases as  
384 malaria is controlled. Nature communications **2015**; 6:6054.
- 385 16. Kangoye DT, Noor A, Midega J, et al. Malaria hotspots defined by clinical malaria,  
386 asymptomatic carriage, PCR and vector numbers in a low transmission area on the Kenyan  
387 Coast. Malaria journal **2016**; 15:213.

- 388 17. Stresman GH, Mwesigwa J, Achan J, et al. Do hotspots fuel malaria transmission: a village-  
389 scale spatio-temporal analysis of a 2-year cohort study in The Gambia. *BMC medicine* **2018**;  
390 16:160.
- 391 18. Burkot TR, Bugoro H, Apairamo A, et al. Spatial-temporal heterogeneity in malaria  
392 receptivity is best estimated by vector biting rates in areas nearing elimination. *Parasites &*  
393 *vectors* **2018**; 11:606.
- 394 19. Smith DL, McKenzie FE, Snow RW, Hay SI. Revisiting the basic reproductive number for  
395 malaria and its implications for malaria control. *PLoS biology* **2007**; 5:e42.
- 396 20. Commission on Revenue Allocation. Kenya County Fact Sheets. 1 ed, **2011**.
- 397 21. Mangeni JN, Ongore D, Mwangi A, Vulule JM, O’Meara WP, Obala A. Prevalence,  
398 heterogeneity, of asymptomatic malaria infections and associated factors in a high transmission  
399 region. *East African Medical Journal* **2017**; 94.
- 400 22. Mangeni JN, Ongore D, Mwangi A, Vulule JM, Obala A, O’Meara WP. Malaria “hotspots”  
401 within a larger hotspot; what’s the role of behavioral factors in fine scale heterogeneity in  
402 western Kenya? *East African Medical Journal* **2017**; 94.
- 403 23. Taylor SM, Sumner KM, Freedman B, Mangeni JN, Obala AA, O’Meara WP. Direct estimation  
404 of sensitivity of Plasmodium falciparum rapid diagnostic test for active case detection in a high-  
405 transmission community setting. *American Journal of Tropical Medicine and Hygiene* **2019**; IN  
406 PRESS.
- 407 24. Yelland LN, Salter AB, Ryan P. Performance of the modified Poisson regression approach for  
408 estimating relative risks from clustered prospective data. *American journal of epidemiology*  
409 **2011**; 174:984-92.

- 410 25. Nakagawa S, Johnson PCD, Schielzeth H. The coefficient of determination  $R^2$  and intra-  
411 class correlation coefficient from generalized linear mixed-effects models revisited and  
412 expanded. *Journal of the Royal Society, Interface* **2017**; 14.
- 413 26. Knols BG, de Jong R, Takken W. Differential attractiveness of isolated humans to mosquitoes  
414 in Tanzania. *Transactions of the Royal Society of Tropical Medicine and Hygiene* **1995**; 89:604-6.
- 415 27. Lindsay SW, Adiamah JH, Miller JE, Pleass RJ, Armstrong JR. Variation in attractiveness of  
416 human subjects to malaria mosquitoes (Diptera: Culicidae) in The Gambia. *Journal of medical  
417 entomology* **1993**; 30:368-73.
- 418 28. Matowo NS, Moore J, Mapua S, et al. Using a new odour-baited device to explore options  
419 for luring and killing outdoor-biting malaria vectors: a report on design and field evaluation of  
420 the Mosquito Landing Box. *Parasites & vectors* **2013**; 6:137.
- 421 29. Milali MP, Sikulu-Lord MT, Govella NJ. Bites before and after bedtime can carry a high risk of  
422 human malaria infection. *Malaria journal* **2017**; 16:91.
- 423 30. Reddy MR, Overgaard HJ, Abaga S, et al. Outdoor host seeking behaviour of *Anopheles*  
424 *gambiae* mosquitoes following initiation of malaria vector control on Bioko Island, Equatorial  
425 Guinea. *Malaria journal* **2011**; 10:184.
- 426 31. Russell TL, Govella NJ, Azizi S, Drakeley CJ, Kachur SP, Killeen GF. Increased proportions of  
427 outdoor feeding among residual malaria vector populations following increased use of  
428 insecticide-treated nets in rural Tanzania. *Malaria journal* **2011**; 10:80.
- 429 32. Sougoufara S, Diedhiou SM, Doucoure S, et al. Biting by *Anopheles funestus* in broad  
430 daylight after use of long-lasting insecticidal nets: a new challenge to malaria elimination.  
431 *Malaria journal* **2014**; 13:125.

- 432 33. Sonden K, Doumbo S, Hammar U, et al. Asymptomatic Multiclonal Plasmodium falciparum  
433 Infections Carried Through the Dry Season Predict Protection Against Subsequent Clinical  
434 Malaria. *The Journal of infectious diseases* **2015**; 212:608-16.
- 435 34. Zhou G, Afrane YA, Malla S, Githeko AK, Yan G. Active case surveillance, passive case  
436 surveillance and asymptomatic malaria parasite screening illustrate different age distribution,  
437 spatial clustering and seasonality in western Kenya. *Malaria journal* **2015**; 14:41.
- 438 35. Lopera-Mesa TM, Doumbia S, Konate D, et al. Effect of red blood cell variants on childhood  
439 malaria in Mali: a prospective cohort study. *The Lancet Haematology* **2015**; 2:e140-9.
- 440



Figure 1: Weekly entomological exposures (a) and monthly confirmed malaria cases (b) from June 2017 to July 2018

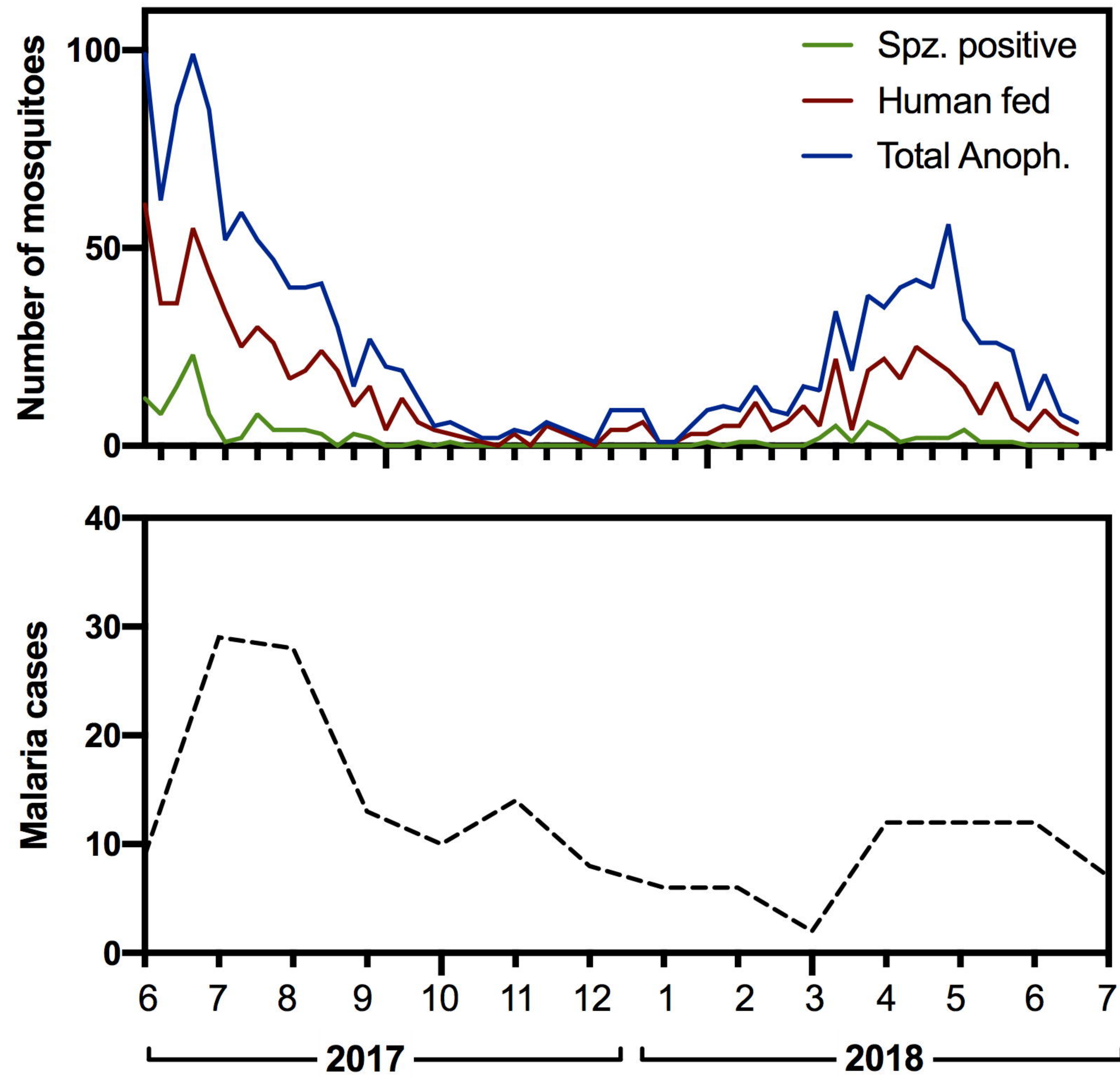
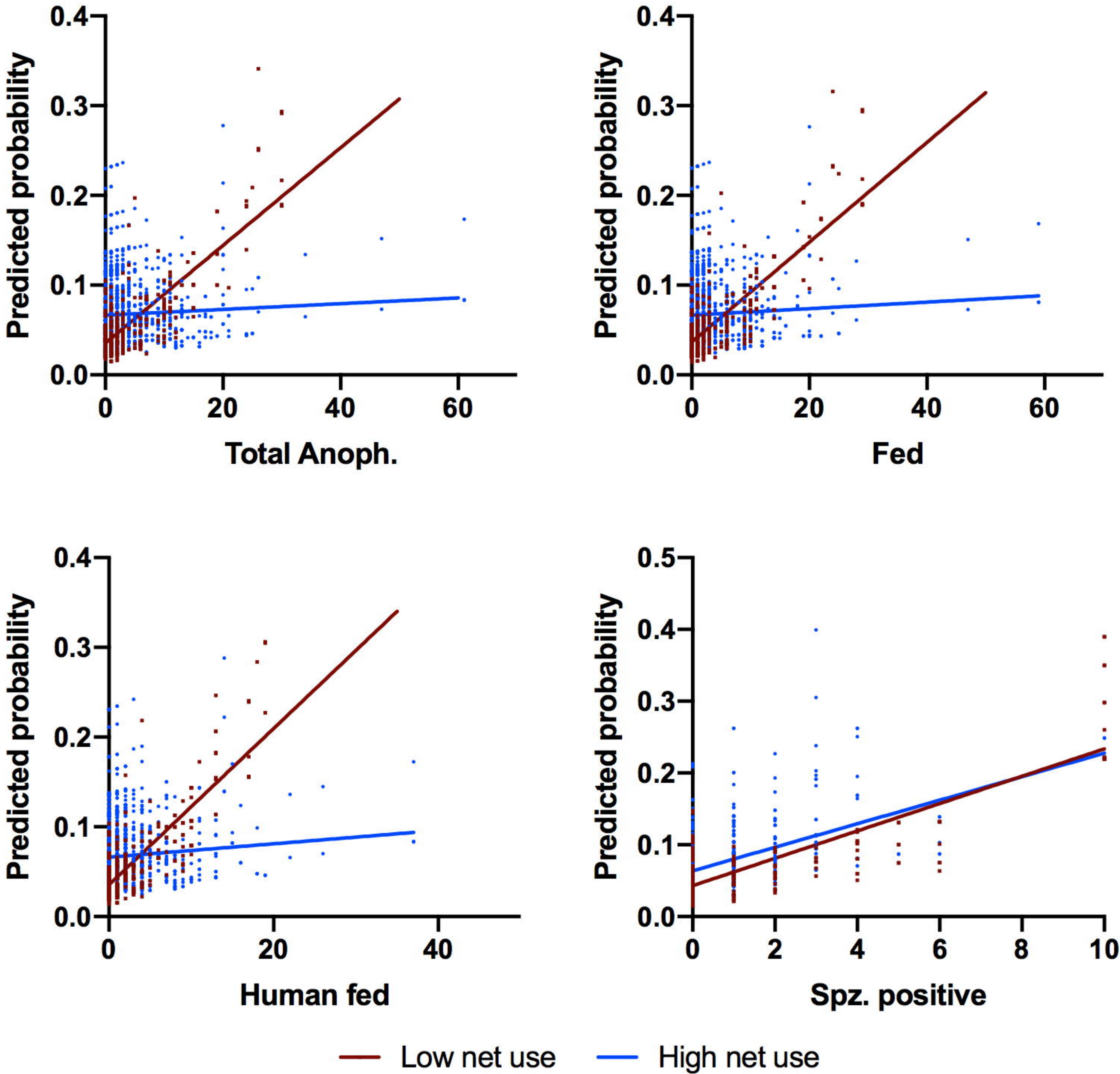




Figure 2: Predicted probability of malaria episode by mosquito exposure for high versus low net use



medRxiv preprint doi: <https://doi.org/10.1101/2020.09.18.20193854>; this version posted October 18, 2020. The copyright holder for this preprint (which was not certified by peer review) is the author/funder, who has granted medRxiv a license to display the preprint in perpetuity. All rights reserved. No reuse allowed without permission.



**Figure 3:** Estimated marginal  $R^2$  for models of malaria incidence where covariates are added sequentially (base model) to measure the effect on model fit. Separate models are fit with base model plus one exposure variable or one exposure variable with interaction on net use.

