

1 **Molecular Epidemiology, Diagnostics and Mechanisms of Antibiotic Resistance in *Mycobacterium***
2 ***tuberculosis* complex in Africa: A Systematic Review of Current Reports**

3 John Osei Sekyere¹, Melese Abate Reta^{1,2}, Nontuthuko Excellent Maningi¹, Petrus Bernard Fourie¹

4

5 ¹Department of Medical Microbiology, Faculty of Health Sciences, University of Pretoria, South Africa

6 ²Department of Medical Laboratory Science, Faculty of Health Sciences, Woldia University, Woldia,

7 Ethiopia

8

9 #Address correspondence to Dr. John Osei Sekyere,

10 Department of Medical Microbiology, Faculty of Health Sciences, University of Pretoria, South Africa.

11 Email: jod14139@yahoo.com; u18392467@tuks.co.za

12

13

14

15 **Running title:** Epidemiology of *M. tuberculosis* resistance, Africa.

16

17

18

19

20

21

22

23 **Abstract**

24 **Background:** Tuberculosis (TB) remains a main global public health problem. However, a systematic
25 review of TB resistance epidemiology in Africa is wanting.

26 **Methods:** A comprehensive systematic search of PubMed, Web of Science and ScienceDirect for English
27 research articles reporting on the molecular epidemiology of *Mycobacterium tuberculosis* complex
28 resistance in Africa from January 2007 to December 2018 was undertaken.

29 **Results and conclusion:** Qualitative and quantitative synthesis were respectively undertaken with 232
30 and 186 included articles, representing 32 countries. TB monoresistance rate was highest for isoniazid
31 (59%) and rifampicin (27%), particularly in Zimbabwe (100%), Swaziland (100%), and Sudan (67.9%)
32 whilst multidrug resistance (MDR) rate was substantial in Zimbabwe (100%), Sudan (34.6%), Ivory
33 Coast (24.5%) and Ethiopia (23.9%). Resistance-conferring mutations were commonly found in *katG*
34 (n=3694), *rpoB* (n=3591), *rrs* (n=1272), *inhA* (n=1065), *pncA* (n=1063) and *embB* (n=705) in almost all
35 included countries: S315G/I/N/R/T, V473D/F/G/I, Q471H/Q/R/Y, S303C/L etc. in *katG*; S531A/F/S/G,
36 H526A/C/D/G, D516A/E/G etc. in *rpoB*; A1401G, A513C etc. in *rrs*; C15T, G17A/T, -A16G etc. in
37 *inhA*; Ins456C, Ins 172G, L172P, C14R, Ins515G etc in *pncA*. Commonest lineages and families such as
38 T (n=8139), LAM (n=5243), Beijing (n=5471), Cameroon (n=3315), CAS (n=2021), H (n=1773) etc.,
39 with the exception of T, were not fairly distributed; Beijing, Cameroon and CAS were prevalent in South
40 Africa (n=4964), Ghana (n=2306), and Ethiopia/Tanzania (n=799/635) respectively. Resistance mutations
41 were not lineage-specific and sputum (96.2%) were mainly used for diagnosing TB resistance using the
42 LPA (38.5%), GeneXpert (17.2%), whole-genome sequencing (12.3%) and PCR/amplicon sequencing
43 (9%/23%). Intercountry spread of strains were limited while intra-country dissemination was common.
44 TB resistance and its diagnosis remain a major threat in Africa, necessitating urgent action to contain this
45 global menace.

46 **Keywords:** Molecular epidemiology; antibiotic resistance; antitubercular drugs; *M. tuberculosis*; Africa.

47 1. Introduction

48 As one of the oldest diseases of mankind, it is still surprising and disturbing that Tuberculosis (TB)
49 continues to remain the leading cause of morbidity and mortality from a single aetiological agent
50 worldwide (1-3), with an estimated 10.4 million active TB cases and nearly 1.6 million deaths in 2018
51 (4). Disturbingly, poorer and overpopulated regions with overburdened healthcare systems such as Africa
52 and South-East Asia comprised 82% of TB deaths among HIV-negative people (5), showing that high TB
53 incidence cases occurred in low-income and resource-limited countries (6-8). Particularly in Africa where
54 the TB incidence rate is around 25% (5), the situation is worsened by social conditions, the HIV
55 epidemic, weak healthcare systems, scarce laboratories, and the emergence of multidrug-resistant-TB
56 (MDR-TB) (7, 9, 10).

57 Effective TB prevention and control, diagnosis and treatment, particularly of drug-resistant (DR)-TB,
58 needs a large proportion of national budgets [15]. Moreover, DR-TB also affects economic activity as
59 most TB patients are economically active adults with dependents [14]. Dheda *et al.* (2014) revealed that
60 in certain African countries such as South Africa, where DR-TB accounts for less than 3% of all TB
61 cases, over a third of the national TB budget is sapped up by DR-TB alone, which is unsustainable and
62 threatens to weaken nationwide TB programmes [14, 15]. Similarly, a cost analysis study in South Africa
63 by Pooran *et al.* (2013) revealed that smear-positive drug sensitive-TB (DS-TB) costed \$191.66 per case,
64 whereas a smear-negative and retreatment cases costed \$252.54 and \$455.50, respectively, making the
65 latter two more expensive [15].

66 The TB menace in Africa is compounded by the burgeoning prevalence of DR-TB (11), MDR-TB and
67 extensively drug-resistant (XDR-) TB (12), which are impossible to treat with first line drugs and result in
68 higher mortalities, increased medication costs and drug-associated toxicities (13-15). Delays in diagnosis
69 and treatment of TB, previous exposure to anti-TB drugs (2, 11, 16, 17), inappropriate drug regimens (18-
70 20), poor adherence to prescribed regimen (19), and primary infections with DR-TB strains are the main
71 contributing risk factors for the emergence and dissemination of DR-TB (21, 22). The emergence of DR-

72 TB has necessitated the development of rapid and simple diagnostic methods to detect drug resistance and
73 evolving resistance mechanisms in the *M. tuberculosis* (*M. tb*) genome (2, 12). Evidently, early and
74 accurate detection of DR-TB enhances appropriate treatment and informs tailored interventions to break
75 the TB transmission chain (2). However, the dearth of advanced molecular diagnostic tools, well-
76 equipped laboratory infrastructure and trained personnel in most resource-limited countries in Africa,
77 limits the detection of DR-TB to the use of non-molecular techniques that are time-consuming and have
78 limited efficiency (23, 24).

79 Thus, DR-TB is perceived after persistent and/or exacerbating TB symptoms several weeks or months
80 after treatment with first-line antibiotics in such settings, consequently selecting and proliferating MDR
81 and XDR-TB (20, 25). Abdelaal *et al.* (2009) revealed that DR-TB was high (70%) in previously treated
82 patients than in newly infected patients (30%) (2) whilst Affolabi *et al.* (2017) confirmed that patients
83 with a history of TB chemotherapy are more likely to develop MDR-TB strains than newly treated
84 patients (16). These findings buttress the need for efficient, simpler and cheaper TB and DR-TB
85 diagnostics for a comprehensive containment of the TB menace.

86 The number of antibiotics to which *M. tb* is resistant to is also used to classify the level of resistance as
87 mono resistance, MDR, and XDR. *M. tuberculosis* that are resistant to only one of the first-line drugs
88 such as isoniazid (INH), rifampicin (RIF), ethambutol (EMB) and pyrazinamide (PZA) are described as
89 mono-resistant whilst those that are resistant to at least both INH and RIF are defined as MDR. MDR-TB
90 with additional resistance to a fluoroquinolone (FQ) and at least one of the three injectable second-line
91 anti-TB drugs such as amikacin (AMK), kanamycin (KAN) and capreomycin (CAP) is classified as
92 XDR-TB (5, 11, 20, 26, 27).

93 Drug resistance in *M. tb* is mediated through various mechanisms. Firstly, the hydrophobic mycolic acid-
94 saturated architecture of the *M. tb* cell wall reduces permeability to several antibiotics (20, 27-29).
95 Secondly, mutations in the hotspot regions of genes encoding drug target proteins or enzymes result in
96 drug resistance (27, 30). Finally, active efflux of antibiotics and expression of drug-deactivating enzymes

97 protect the bacilli against antibiotics (27, 28). In this review, the epidemiology of resistance-conferring
98 mutations i.e., deletions, insertions, frameshift or point mutations, described in genes mediating resistance
99 to first-line antitubercular drugs viz., INH, RIF, PZA, EMB, and streptomycin (STM) (18, 31-37), as well
100 as for most second-line antitubercular drugs such as ethionamide (ETM), FQ, CAP, KAN, and AMK (36-
101 38) are described. Unlike in Gram-Positive and Gram-Negative bacterial species, horizontal acquisition of
102 resistance genes are unknown in TB (20, 39). However, Mehra et al. (2016), recently reported on the
103 presence of drug resistance ABC (efflux) transporters and important virulence factors/genes such as the
104 ESX-1 transport machinery, including ESAT-6 and CFP-10, as well as ESX-5 regions of the type-VII
105 secretion system (T7SS) on a genomic island in *M. tuberculosis* genomes, suggesting horizontal gene
106 transmission.

107 Molecular epidemiology analysis decodes strain transmission dynamics, risk factors for recent
108 transmission, the occurrence of mixed *M. tb* infections (40), disease severity and drug resistance (41), as
109 well as TB strains related to outbreaks (42). There are currently seven *M. tb* lineages, comprised of
110 several sub-lineages and families, with region-specific prevalence rates and varying virulence capacities
111 (43). Specifically, the Beijing family has been implicated in several studies as having a better capability
112 for developing MDR (40, 44, 45). Genotyping tools such as spoligotyping, MIRU-VNTR typing, IS6110
113 RFLP, and whole-genome sequencing (WGS) are normally used to determine the lineage and
114 transmission routes of *M. tb* in Africa, albeit WGS provides a better typing and evolutionary
115 epidemiology resolution.

116 ***Evidence before this review***

117 Many studies have reviewed the resistance rate of antitubercular drugs, mechanisms of resistance, and
118 distributions of *M. tuberculosis* strains/lineages in distinct African countries, but not throughout Africa. A
119 thorough search of the literature in Pubmed within the last five years for reviews addressing the molecular
120 epidemiology, resistance rates and diagnostics throughout Africa yielded no results, suggesting that this
121 could be the first to review these on the continent.

122 ***Purpose of this review***

123 This review seeks to describe the molecular epidemiology of *M. tb* strains/genotypes per country, their
124 mechanisms of resistance, and mono-resistance, MDR and XDR rates in Africa. Furthermore, we describe
125 herein the molecular diagnostic methods used to identify and characterize antitubercular drug resistance
126 as well as the genotyping methods used to identify *M. tb* lineages/sub-lineages in Africa. It is our aim
127 that these findings shall inform evidence-based public health TB intervention policies as well as the
128 prescription, stewardship and design/development of novel antitubercular medications.

129 **2. Methods**

130 ***Databases and Search Strategy***

131 A comprehensive literature search was carried out on PubMed, Web of Science, and ScienceDirect
132 electronic databases. English research articles published between January 2007 and December 2018 were
133 retrieved and screened using the following search terms and/or phrases: "molecular epidemiology";
134 "*Mycobacterium tuberculosis*"; "tuberculosis"; "mechanisms of drug resistance"; "genetic diversity";
135 "transmission dynamics"; "genotyping"; "drug resistance"; "MDR-TB"; "XDR-TB"; "gene mutations";
136 "first- and second-line anti-TB drug"; "frequency of gene mutation"; and "Africa". These search
137 words/phrases were further paired with each other or combined with names of each African country, and
138 search strings were implemented using "AND" and "OR" Boolean operators. The search focused on the
139 molecular epidemiology of *M. tb* and/or mechanisms of antitubercular drug resistance.

140 ***Inclusion and Exclusion Criteria***

141 Articles not reporting on *M. tb* genotypes and anti-TB drug resistance mechanisms were excluded. Studies
142 addressing the following were included: [a] molecular epidemiology/genotype of *M. tb* strains; [b]
143 resistance-conferring mutations associated with first and second-line antitubercular drugs; [c] molecular
144 diagnostics; [d] TB research conducted in Africa; [e] studies conducted between January 2007 and
145 December 2018; and [f] studies published in English.

146 This review was conducted using the Preferred Reporting Items for Systematic Reviews and Meta-
147 Analyses (PRISMA) guidelines (Figure 1). The following data were extracted from the included articles:
148 country; year of study; specimen source(s); genotyping and diagnostic method(s)/techniques used; *M. tb*
149 strains/lineages/sub-lineages; sample size; resistant isolates and resistance rates; frequency of resistance-
150 conferring mutations per gene; antitubercular drug resistance mechanisms (Tables S1-S6).

151 The rate of resistance to anti-TB drugs was evaluated per country to identify regions with the lowest and
152 highest burden of mono-resistance, MDR and XDR rates. Resistance mutations distribution per gene were
153 examined to identify countries with the most resistance as well as the mutation rate per locus of each
154 gene. The distribution of *M. tb* lineages/sub-lineages and families were determined per country. The
155 association of *M. tb* lineages with specific gene mutations were assessed.

156 ***Phylogenomics***

157 Genomes of *M. tb* isolated from Africa from 1997 to 2019 (n=800 isolates) were downloaded from
158 PATRIC (<https://www.patricbrc.org/>) and categorized into resistant isolates and mixed (both resistant and
159 non-resistant) isolates (Supplementary dataset). RAxML v8.2 was used to draw the core-genome
160 phylogenetic trees of these strains, using *Streptococcus mitis* M3-4 as an outgroup/reference strain (46).
161 The trees were subsequently annotated with Figtree (<http://tree.bio.ed.ac.uk/software/figtree/>). Isolates of
162 the same country were given the same label colours. Clades and subclades were highlighted with the same
163 colours to show their closer relationship.

164 ***Statistical analysis***

165 Microsoft Excel® 365 were used to analyze the resistance rate and frequency data in this study using the
166 raw data extracted from the included articles. The resistance rates per antibiotic per country were
167 calculated by dividing the total resistant isolates by the total isolates for which antibiotic sensitivity was
168 determined.

169 3. Results

170 *Characteristics of included studies*

171 As described in Figure 1, 1688 potential research articles were documented: 1598 articles from PubMed,
172 41 articles from Web of Science, 37 articles from ScienceDirect, and 12 articles from other sources
173 obtained through manual search. Of the total, 589 were non-duplicated and subjected to further
174 evaluation, 253 were excluded based on the title and abstract evaluation whilst 336 were retained on
175 detailed full-text review. After full-text evaluation, 232 studies on the molecular epidemiology and/or
176 mechanisms of antitubercular drug resistance were used for qualitative review analysis, and 186 studies
177 were used for quantitative analysis (Tables S1-S6).

178 The 186 studies were from 32 out of 54 (59.3%) countries in Africa, and these included Algeria (n=1
179 study, 126 isolates), Angola (n=1 study, 89 isolates), Benin (n=2 studies, 294 isolates), Burkina Faso (n=2
180 studies, 183 isolates), Botswana (n=1 study, 260 isolates), Cameroon (n=4 studies, 1334 isolates), Chad
181 (n=1 study, 311 isolates), Congo (n=2 studies, 120 isolates), Ivory Coast (n=3 studies, 261 isolates),
182 Djibouti (n=3 study, 529 isolates), Egypt (n=5 studies, 697 isolates), Ethiopia (n=36 studies, 7 338
183 isolates), Gabon (n=1 study, 124 isolates), Ghana (n=7 studies, 7 527 isolates), Guinea (n=1 study, 184
184 isolates), Guinea-Bissau (n=2 studies, 514 isolates), Madagascar (n=1 study, 158 isolates), Malawi (n=3
185 studies, 2054 isolates), Mali (n=2 studies, 571 isolates), Morocco (n=7 studies, 1966 isolates),
186 Mozambique (n=6 studies, 884 isolates), Nigeria (n=8 studies, 1984 isolates), Rwanda (n=2 studies, 221
187 isolates), Sierra Leone (n=2 studies, 194 isolates), South Africa (n=46 studies, 18 635 isolates), Swaziland
188 (n=2 studies, 203 isolates), Sudan (n=5 studies, 469 isolates), Tanzania (n=9 studies, 1 756 isolates),
189 Tunisia (n=4 studies, 1 701 isolates), Uganda (n=13 studies, 3 873 isolates), Zambia (n=2 studies, 395
190 isolates) and Zimbabwe (n=2 studies, 338 isolates) (Table S1).

191 There were ~55, 924 *M. tb* isolates from the 232 studies that were isolated from different specimen
192 sources, including sputum specimens (85.5%, n=51419 isolates), fine needle aspirates (FNA) (4.8%,
193 n=1095 isolates), fine needle aspirates and sputum (3.8%, n=2779 isolates), and gastric lavage and

194 sputum (2.2%, n=232 isolates) (Table 1). The molecular epidemiology of *M. tb* strains/lineages in Africa
195 were found in 126 studies whilst 95 studies reported on only mechanisms of resistance (gene mutations)
196 associated with first and second-line anti-TB drugs (Table S2-S4). As well, 28 studies reported on *M. tb*
197 strains/lineages associated with specific mutations conferring resistance to first and second-line anti-TB
198 drugs in Africa (Table S6). Fifty-three studies reported on the target gene or whole-genome sequencing
199 analysis after performing phenotypic drug susceptibility testing with the conventional proportion (agar
200 dilution) methods on Lowenstein-Jensen agar medium and BACTEC MGIT 960 and 460 systems (Tables
201 2 & S5). The least sample size per study were observed in Ivory Coast (n=2), South Africa (n=2) and
202 Uganda (n=2); the largest sample sizes were observed in South Africa (n=4667). A molecular
203 characterization of *M. tb* strains and/or mechanisms of drug resistance (gene mutations) associated with
204 drug resistance were performed for all included studies (Table S1-S6).

205 ***Rate of drug resistance and isolates source(s)***

206 From the ~55 924 total isolates, drug sensitivity tests (DST) were done for 24 836 isolates, of which 23
207 959 isolates were resistant to at least one antibiotic, resulting in an overall resistance rate of 96.5% (Table
208 S5). The mono-resistance (to at least one antibiotic) and MDR rate per country is shown in Figure 2 and
209 Tables S3 and S5. Mono-resistance and MDR to any of the anti-TB drugs was found in only 25 countries
210 out of 32 countries included in this review, with INH and RIF having the highest monoresistance rates
211 (Fig. 2A-2C). MDR rate was highest in Zimbabwe (100%), Swaziland (100%) and Guinea Bissau (88.9),
212 albeit South Africa had the highest number (n=4579) of MDR isolates. MDR rates were relatively low in
213 other countries (Fig. 2D). The rate of patients with MDR and XDR-TB strains in Africa were 14.5% (3
214 598 MDR isolates), and 3.1% (781 XDR isolates), respectively. However, all the XDR isolates were from
215 South Africa.

216
217 In almost all the 25 countries, resistance mutations were found in mainly the *katG* (29%), *rpoB* (28%), *rrs*
218 (10%) and *inhA* (8%) genes, with *pncA* (8%) mutations being commonly found in Zambia, Uganda,

219 Tanzania, Sierra Leone, Nigeria and Gabon. *embB* (6%) was common in Uganda, Tanzania, Sierra Leone,
220 Nigeria, Mozambique, Morocco and Egypt. Resistance mutations in *gyrA* (6%) were also common in few
221 countries such as Tunisia, Rwanda, Nigeria, Mozambique, Morocco, and Congo (Fig. 2E and 2F).

222
223 Within each of these resistance genes, there were common mutations that were found in isolates from all
224 countries (Figures 3-5; Tables S2-S4; FIG. 4). For instance, in *rpoB*, S531A/F/L/S/Q/T/W/Y/STOP,
225 H526A/C/D/G/L/N/P/Q/R/T/Y/del, and D516A/E/G/V/Y/del were common, S315G/I/N/R/T/L/S/+ahpC-
226 48 and V473D/F/G/I/K/M/N/R/S/V/ W/Y/STOP were the commonest in *katG*, C15T, G17A/T and
227 T8A/C were prevalent in *inhA* and its promoter (*inhA*Pro) whilst M306I/LV/Xaa was more pronounced in
228 *embB*. Mutations in the *pncA* gene were varied and spread-out on the gene, with Ins456C, L172P/G/Ins,
229 K96R/STOP and C14R being dominant. K43R and K88R/T on *rpsL*, D94A/G/H/N/Y, A90L/V, D94G
230 and S95T on *gyrA* as well as A1401G, A513C, S2169A etc. on *rrs* were the most recurring mutations
231 (Fig. 3). These mutations, particularly in *rpoB*, *katG* and *inhA*, were found in isolates from almost all the
232 countries, with *pncA* mutations being reported mainly from Gabon, Nigeria, Sierra Leone, South Africa,
233 Tanzania, Uganda and Zambia (Fig. 4-5). Reported mutations on the *rpoA/C*, *embA/C*, *gyrB*, *gidB*, *eis*,
234 *ndh*, *ahpC*, *tlyA* were relatively few and reported in few countries throughout Africa. For instance, *gibB*
235 was reported in Cameroon, Nigeria, Sierra Leone, South Africa, and Uganda, *eis* was reported in Ivory
236 Coast and South Africa, *ndh* was found in Ghana, *ahpC* was found in Ghana and Uganda, and *tlyA* was
237 found in South Africa (Figure 3-5; Tables S2-S4; FIG. 4).

238 Commonest mutations in each resistance gene per lineage, sub-lineage and families are shown in Figure 6
239 and Table S6. Lineage or family-specific resistance mutations per gene were difficult to find, particularly
240 for mutations that occurred in smaller frequencies. Particularly, *rpoB* (e.g. S531L, D516Y, H526Y) and
241 *katG* (S315T) mutations were found in almost all lineages and families in almost all countries, albeit in
242 very low prevalence in Beijing strains, which were predominantly reported from South Africa; *katG*
243 S315T mutation was the only one found in the Congo sub-lineage. Mutations in *rrs*, particularly A1401G

244 were very pre-dominant in Beijing, F15/LAM4/KZN and X lineages. G204D and G102A mutations in
245 *inhA* were commonly associated with the Ghana-type sublineage, which was reported mainly from Ghana
246 whilst the C15T mutation was spread throughout almost all countries and lineages (Figure 5; Table S6).
247 Notably, only T47A mutation (n=2) in *pncA* was reported in Beijing strains whilst low frequencies of
248 other diverse *pncA* mutations were found in several other families, particularly in South Africa; the sole
249 mutation reported in *M. bovis* was a single *pncA* mutation (H57D). Likewise, *embB* mutations were
250 almost absent in Beijing and CAS strains, but was very common in R86, Cameroon, and KZN strains
251 whilst very low frequencies were found in almost all other families (Fig. 5).

252
253 Mutations in genes conferring resistance to 2nd-line drugs were not as frequent as those in 1st-line drugs.
254 Specifically, *gyrA* mutations were very low in Beijing, EuA-T2, and Cameroon strains, high in EuA-
255 LAM9-T5, F28, F15/LAM4/KZN etc. and absent in *M. africanum*, *M. bovis*, Ghana-type, Haarlem, CAS,
256 Congo, KZN, LCC, SIT954, X, Sierra Leone, Uganda, TURK and S-type strains. Furthermore, *gibB*
257 mutations were prevalent in LAM, including EuA-LAM, and *M. africanum* II strains, but were very low
258 in Cameroon-type, East African Indian (EAI), X-type, Sierra Leone, and uncharacterized strains.
259 Resistance mutations occurred in *gibB* alongside *rpsL* and/or *rrs* in Cameroon, EAI, LAM (EuA-LAM),
260 X, *M. africanum*, Sierra Leone, and uncharacterized strains (Figure 5; Table S6).

261 ***North Africa: Egypt, Morocco, Sudan, Tunisia***

262 *Egypt*

263 DST was determined for 316 clinical isolates by three studies in Egypt, resulting in a resistance rate of
264 40.5% (n=128) and a RIF-monoresistance rate of 3.2% (n=10) (Tables S1 & S3), the highest of which
265 was reported by Abdelaal *et al.*(2009) to be 3.9% (n=6) (2). In the same year, Abbadi *et al.*(2009)
266 reported a 1.9% (n=3) RIF mono-resistance rate (47). RIF resistance was mostly mediated by S531L
267 (n=21), D516V (n=8), and H526N/Y (n=8) mutations in the *rpoB* gene (48, 49). Similarly, the mean INH-

268 monoresistance rate in Egypt was found to be 5.4% (n=17), mediated by S315T (n=31) mutation in *katG*
269 (Table S2).

270 Abbadi *et al* (2009) reported a PZA-monoresistance rate of 0.6% (n=2), albeit the resistance mechanisms
271 was not characterised (47). However, Bwalya *et al* (2018) in Zambia reported a 3.3% PZA
272 monoresistance rate, with different *pncA* mutations (50). The MDR rate in Egypt was 12% (n=38) (Table
273 S1 & S5).

274 EMB-monoresistance rate was 1.9% (n=6), mediated mainly by M306V/I mutations (n=2) (2, 47) in
275 *embB* (3.1%, n=4) (Tables S1 & S3). Abbadi *et al* (2009) detected the highest STM-monoresistance rate
276 in Egypt, which was 13.5% (n=21), and was mainly mediated by *rpsL* gene mutations (55.6%) (47).

277 *Morocco*

278 Four studies conducted in Morocco undertook DST of 987 *M. tb* isolates, yielding a resistance rate of
279 32.7% (n=323), a RIF-monoresistance rate of 0.9% (n=9) and an INH monoresistance rate of 1.2% (n=12)
280 (Tables S1 & S3). S531L (n=48), followed by H526D (n=23) mutations in *rpoB* (23.2%, n=75)
281 predominantly mediated RIF resistance (Tables S1 & S4; FIG. 4). Karimi *et al* (2018) reported an INH
282 monoresistance rate of 17.1% (n=12) (23). The proportion of *katG* gene mutation was 26.3% (n=85)
283 whilst *inhA* mutation was 3.7% (n=12) (Tables S2 & S3), being respectively mediated by S315T (n=85)
284 and C15T(n=10) (at *inhA*'s promotor region) (Table S4; FIG. 4). The MDR rate in morocco was 2.6%
285 (n=26), and was comparable with the 2016 estimated incidence rate of MDR/RIF resistance cases in the
286 country, which was 1.8/100,000 (5). However, the 2016 national survey reported that the MDR/RIF
287 resistant TB cases among previously treated cases was 11% (5).

288 *Sudan*

289 The rate of antibiotics resistance in Sudan, based on three studies, was 67.9% (n=161) (11, 51-53). S531L
290 (n=36) and H526Y(n=5) were the commonest *rpoB* (43.5%, n=70) mutations associated with RIF
291 resistance (Tables S2 & S3). Abdul-Aziz *et al.* (2013) reported an INH monoresistance of 0.4% (n=1) in
292 Sudan (11). Mutations in *katG* and the *inhA* promotor region was mainly S315T (n=10) and C15T(n=7)

293 respectively, conferring high-level INH resistance. Moreover, the MDR rate in Sudan was 34.6% (n=82)
294 (Tables S1). The highest MDR rate, 100% (n=49), was detected in the year 2013 (53).

295 *Tunisia*

296 Three studies in Tunisia, encompassing 1322 clinical isolates, resulted in a 3.2% (n=42) resistance rate.
297 RIF monoresistance rate was not reported in any of the studies. D516V (n=8) and S531W (n=4) mutations
298 in *rpoB* (50%, n=21) commonly mediated RIF resistance (Tables S1-S3). This Tunisian result was lower
299 than the finding detected in Egypt 40.5% (2, 47, 54), Morocco 32.7% (23, 55-57), Sudan 67.9% (11, 51,
300 53), Mozambique 32.8% (58, 59); but higher than the report from Rwanda 0.6% (60) (Figure 2a).

301 Comparatively, the MDR rate in Tunisia was very low (Tables S1-S3).

302 ***West Africa: Burkina Faso, Ghana, Guinea Bissau, Ivory Coast, Nigeria, Sierra Leone***

303 *Burkina Faso*

304 A single study by Miotto *et al* (2009), using the MTBDR_{plus} on 63 isolates, reported a resistance rate of
305 57.1% (n=36), and a RIF and INH monoresistance rate of 3.2% (n=2) and 7.9% respectively (Tables S1-
306 S3). D516V (43.8%), followed by H526D (15.6%), H526Y (15.6%), and S531L (9.4%) *rpoB* mutations
307 conferred RIF resistance in 72.2% (n=26) of isolates while mutations in *katG*, found in 86.8% (n=33) of
308 isolates, and mutation in *inhA*, found in 34.2% (n=13) of strains conferred INH resistance (Tables S4;
309 FIG. 4). The MDR rate was 46.0% (n=29), which is higher than the 2016 estimated incidence of 2%
310 MDR/RIF resistant-TB in the country (1.6/100,000) and the 2017 national survey report of 14%
311 MDR/RIF resistant-TB case among new and previously treated cases (5).

312 *Ghana*

313 The overall resistance rate in Ghana, based on 2505 *M. tb* isolates in four studies, was 20.5% (n=513),
314 which is higher than those of Tunisia (3.2%), Malawi (6.4%), Rwanda (0.6%), Guinea Bissau (9%),
315 Nigeria (13.3%) and Gabon (16.9%), but lower than those reported from other African countries (Tables
316 S1-S3). RIF and INH monoresistance rates in Ghana were 0.8% (n=20) and 6.9% (n=172) respectively.

317 S450L (n=35) and S531L (n=16) *rpoB* mutations (22.4%, n= 115), and V483G (n=6) and G332R (n=4)
318 *rpoC* mutations (1.9%, n=10) predominantly conferred RIF resistance (Table S4; FIG. 4).

319 S315T (n=364) mutation in *katG* (74.5%, n=382) and G204D (n=32) mutation at the *inhA* promotor
320 region (20.3%, n=104), was associated with INH resistance. However, Otchere *et al* (2016) detected
321 novel mutations in *inhA* (G204D), in *ahpC*pro (-88G/A and -142G/A), and in *ndh* (K32R) (61). The
322 MDR rate in Ghana was 4.2% (n=104) (Tables S1-S3), which was lower than the finding reported from
323 other African countries, but higher than those reported from Cameroon (3.7%), Tunisia (0.9%), and
324 Morocco (2.6%).

325 *Guinea Bissau*

326 A resistance rate of 9% (n=9) was reported by Rabna *et al* (2015) in Guinea Bissau using 100 clinical
327 isolates. S531L mutation in *rpoB* mediated RIF resistance (100%, n=10 isolates) (Tables S4; FIG. 4).
328 INH resistance was not detected in this study. In 2016, the estimated incidence of MDR/RIF resistant-TB
329 in Guinea Bissau was 11/100,000 (5).

330 *Ivory Coast*

331 Three research studies involving 261 clinical isolates in Ivory Coast yielded a resistance rate of 33%
332 (n=86) (62-64) and an INH monoresistance rate of 6.5% (n=17). D516V (n=27) and S531L (n=12)
333 mutations in *rpoB* conferred RIF resistance in 67.4% (n=58) of isolates whilst S315T mutation in *katG*
334 (88.4%, n=76 isolates) and T8A/C (n=11/n=16) mutation in the *inhA* promoter (37.2%, n=32 isolates)
335 conferred INH resistance (Tables S1-S3). The rate of MDR in Ivory Coast was 24.5% (n=64) (Figure 2d).

336 *Nigeria*

337 Dinic *et al* (2012) (65) and Senghore *et al* (2017) (38) characterized the mechanisms of first-and second-
338 line anti-TB drug resistance in Nigeria, which had a resistance rate of 13.3% (n=65) from 488 clinical
339 isolates. This result was similar to that of Tanzania (13.7%), but higher than those from Tunisia (3.2%),
340 Malawi (6.4%), Rwanda (0.6%), and Guinea Bissau (9%). RIF monoresistance rate was 1.2%(n=6),
341 mediated by S450L (n=32) and D435Y (n=10) mutations in *rpoB* (91.9%, n= 57) (Tables S1-S3). In

342 2016, the estimated incidence of MDR/RIF-resistant TB among notified pulmonary TB cases was 5200;
343 and MDR/RIF-resistant TB among new and previously treated cases were 4.3% and 25%, respectively
344 (5). From the same report, laboratory-confirmed cases of MDR/RIF resistant-TB cases were 1686 (5).

345 *Sierra Leone*

346 From 97 clinical isolates, a 51.5% (n=50) drug resistance rate and a 1% (n=1) RIF monoresistance rate
347 were detected. S531L (n=8), H526R and H526Y (n=3) *rpoB* mutations (32%, n= 16 isolates) conferred
348 RIF resistance, albeit certain *rpoB* mutations at codons 511, 516, and 533 conferred no RIF resistance
349 (Tables S1-S3)(66). INH monoresistance rate, largely mediated by S315T (n=23) mutation in *katG* and
350 C15T (n=2) mutation at the *inhA* promoter, was 8.2% (n=8); high-level *katG*- and *inhA* promotor-
351 mediated INH resistance was 56% (n=28 isolates) and 4% (n=2 isolates) respectively (Tables S4; FIG. 4)
352 (66). STM monoresistance in Sierra Leone, mediated by K34R (n=11) and K88R (n=8) mutations in
353 *rpsL*, was 14.4% (n=14); *rpsL* conferred STM resistance in 38% (n=19) of the isolates. In Congo, 19% of
354 STM resistance was due to K43R *rpsL* mutation (67). Similarly in Egypt, K43R and K88R formed 13.2%
355 of *rpsL* mutations (Tables S4; FIG. 4) (47).

356 *Central Africa: Cameroon, Chad, Gabon*

357 *Cameroon*

358 Among 163 clinical isolates, the rate of anti-TB drugs resistance was 38.7% (n=63) (**Figure 2a**). S531L
359 (71.4%), H526D (14.3%), and D516V (14.3%) *rpoB* mutations conferred RIF resistance in seven isolates
360 (11.1%). S315T mutations (73% of isolates) in *katG* and mutations at -15 *inhA* promoter region conferred
361 INH resistance in 30.2% (n=19) and 28.6% (n=18) isolates respectively (Tables S1-S4; FIG. 4) (68). The
362 MDR rate in Cameroon was 3.7%(n=6)(68); although in 2016, the estimated incidence of MDR/RIF
363 resistant-TB in the country was 6.8/100,000 (5).

364 *Chad*

365 Ba Diallo *et al* (2017) detected the emergence and clonal transmission of MDR-TB in Chad (24) to be
366 4.5% (n=14)(24); the estimated incidence of MDR/RIF-Resistant (RR) TB in 2016 was 5.3/100,000

367 population (5). However, the overall TB resistance rate in 311 isolates was 23.5% (n=73) while RIF
368 monoresistance rate was 5.5% (n=17). S531L (n=15) and H526Y (n=5) *rpoB* mutations (23.3% , n= 17
369 isolates) mediated RIF resistance (24) while INH monoresistance, conferred by S315T1 (n=30) in *katG*
370 (41.1%, n=30 isolates) and C15T(n=19) mutation at *inhA* promotor region (26%, n=19 isolates), was
371 13.5% (Tables S1-S4; FIG. 4).

372 *Gabon*

373 Alame-Emane and his colleges (2017), using GeneXpert remnants, reported a drug resistance rate of
374 16.9% (n=21) and an MDR rate of 14.5% (n=18)(69), albeit the estimated MDR/RR-TB incidence in
375 Gabon in 2016 was 20/100,000 (5). S531L and D516Y (n=6) *rpoB* mutations conferred 100% RIF
376 resistance (n=21) while *katG* (76.2%, n=16) and *inhA* (81%, n=17) mutations conferred INH resistance
377 (Tables S1-S4; FIG. 4).

378 ***East Africa: Ethiopia, Rwanda, Tanzania, Zambia, Uganda***

379 *Ethiopia*

380 Next to South Africa, Ethiopia reported many studies (12 studies; 2,779 clinical isolates) that
381 characterised TB drug resistance mechanisms, totalling a resistance rate of 35.7% (n=991) and an MDR
382 rate of 23.9% (n=665). RIF monoresistance rate in Ethiopia was 3.1% (n=84), mediated by S531L
383 (n=485) and H526Y (n=55) mutations in *rpoB* (62.6%, n=612). INH monoresistance rate in Ethiopia was
384 3% (n=84), conferred by S315T(n=633) in *katG* (79.1%, n =784) and C15T (n=22) mutation at *inhA*
385 promotor region (4.5%, n =45). The highest MDR rate was reported by Abate *et al* (2014), which was
386 58% (n=427) (48). However, the 2016 estimated incidence of MDR/RR-TB was 5.7/100,000, and
387 MDR/RR-TB case among new and previously treated cases were 2.7% and 14%, respectively (5). Similar
388 findings were reported from Ivory Coast (24.5%) (63), although its higher than that of other African
389 countries (Tables S1-S4; FIG. 4).

390 *Rwanda*

391 Umubyeyi *et al* (2007) determined the rate and mechanisms of fluoroquinolone resistance among 701
392 isolates in Rwanda to be 0.6% (n=4) and *gyrA* (100%, n=4)-mediated, respectively (60); T80A (n=3) and
393 N94A (n=1) *gyrA* mutations mediated ofloxacin (OFL) resistance. OFL resistance rate in Mozambique
394 was however 1.9% (n=6) (58).

395 *Tanzania*

396 Three studies, comprising 226 clinical isolates, yielded a resistance rate of 13.7% (n=31) in Tanzania
397 while the MDR rate was 6.2% (n=14). The highest MDR rate was reported in 2013, i.e. 59.1% (n=13/22),
398 albeit a significant reduction of 1.4% (n=1/74) was reported by Kidenya *et al* (2018) (70). Estimated
399 MDR/RR-TB rate in new and previously treated cases were 1.3 % and 6.2%, respectively in 2016 (5).
400 RIF, INH, EMB and STM monoresistance rates were 0.9% (n=2), 3.1% (n=7), 0.9% (n=2), and 1.8%
401 (n=4) respectively. STM monoresistance however dropped from 2.3% (n=3) in 2007 (71) to 1.4% (n=1)
402 in 2018 (70) (Tables S1-S3). S531L(n=4) mutation in *rpoB* (54.8%, n=17 isolates), *katG* (58.1%, n=18
403 isolates) and *inhA* (9.3%, n=3 isolates) mutations, M306V/I and E378A (n=2) mutations in *ebmB* (29%,
404 n=9 isolates), as well as K43R (n=2) mutation in *rpsL* (6.5%, n=2 isolates) respectively mediated RIF,
405 INH, EMB and STM resistance (Tables S4; FIG. 4).

406 *Zambia*

407 The resistance rate of 123 isolates in Zambia was 26% (n=32), with a PZA monoresistance rate of 3.3%
408 (n=4), which was higher than previous reports from other African countries. S65S (n=17) and L35R (n=7)
409 mutations in *pncA* (84.4%, n=27) conferred resistance to PZA (Table S1-S4; Fig. 4).

410 *Uganda*

411 A resistance rate of 31.8% (n=215) and an MDR rate of 18.3% (n=124) was obtained from four studies
412 involving 676 clinical isolates. RIF and INH monoresistance rates were respectively 2.7% (n=18) and
413 9.3% (n=63) (Tables S1-S3). S531L (n=46) and S450L (n=10) in *rpoB* (50.2%, n=108) as well as *katG*
414 60.5% (n=130) and *inhA* promotor region (4.7%, n=10) mutations were respectively implicated in RIF
415 and INH resistance (Fig. 4; Table S4). A higher INH monoresistance rate of 60% (n=54) was reported in

416 2016 (32) while an MDR rate of 82.4% (n=42) was detected in 2013 (72). In 2016, the estimated
417 incidence of MDR/RR-TB in Uganda was 4.7/100,000; however, a 2011 national survey reported that
418 MDR/RR-TB cases among new and previously treated cases were 1.6% and 12%, respectively (5).

419 ***SOUTHERN AFRICA: Botswana, Malawi, Mozambique, Swaziland, South Africa, Zimbabwe***

420 *Botswana*

421 The overall resistance and MDR rates of 260 clinical isolates in Botswana were respectively 7.7% (n=20)
422 and 1.5% (n=4), with an INH and RIF monoresistance rate of 4.2% (n=11) and 1.9% (n=5) respectively.
423 Resistance to RIF and INH were mediated by *rpoB* (95%, n=19 isolates) and *katG* (65%, n=13 isolates)
424 gene mutations (Tables S1-S4; Fig. 4)

425 *Malawi*

426 In Malawi, the overall TB resistance rate among 995 clinical isolates was 6.4% (n=64). H526Y (n=11)
427 and S531L (n=10) mutations in *rpoB* 57.8% (n=37) mediated RIF resistance (Tables S1-S4; Fig 4).

428 *Mozambique*

429 Two studies in Mozambique that comprised 323 *M. tb* isolates, resulted in a resistance rate of 32.8% (n
430 =93) and an MDR rate of 15.5% (n=50). The estimated TB cases with MDR/RR-TB in new and
431 previously treated cases were 3.7% and 20%, respectively in 2016(5) (Tables S1-S3). The monoresistance
432 rates of RIF, INH and EMB were 0.6% (n=2), 8% (n=26), and 2.8% (n=9) respectively. S531L (n=10)
433 and H526Y (n=6) mutation in *rpoB* 24.5% (n=26), S315T (n=64) mutation in *katG* (69.8%, n=74) and
434 C15T (n=9) mutation in *inhA* (10.4%, n=11) promotor region, and M306I/V (n=3/n=2) mutation in *embB*
435 (11.3%, n=12) conferred RIF, INH and EMB resistance. Furthermore, A90V (n=7) and D94G (n=2)
436 mutations in *gyrA* 9.4% (n=10) mediated OFL (Fluoroquinolones) resistance (Fig. 4; Table S4)

437 *Swaziland*

438 Andre *et al* (2017) and Sanchez-Padilla *et al* (2015) characterised drug-resistant *M. tb* with an Xpert
439 MTB/RIF and a novel rapid PCR, which detected an I491F mutation in *rpoB* (73, 74). Notably, both the
440 resistance and MDR rates among 203 isolates was 100% (n=203).

441 *South Africa*

442 The overall TB resistance rate in South Africa was determined to be 16.8% (n=8197) among 48 760
443 isolates, which was lower than that of Sudan (67.9%), Zimbabwe (100%), and Burkina Faso (57.1%). The
444 MDR rate was 4.5% (n=2189) and was lower than that of Sudan (34.6%), Ethiopia (23.9%), Ivory Coast
445 (24.5%), and Burkina Faso (46%). The 2016 MDR/RR-TB incidence was 34/100,000 population and the
446 estimated rate of TB cases with MDR/RR-TB among new and previously treated cases were 3.4% and
447 7.1%, respectively (5). In the same report, the estimated MDR/RR-TB cases among notified pulmonary
448 TB cases was 8200, whilst laboratory confirmed MDR/RIF resistant-TB cases was 19073 (5). Out of 33
449 studies that determined the resistance mechanisms of first- and second-line drugs, 12 reported on the
450 XDR rate, which was found to be 1.6% (n=781). Laboratory confirmed XDR-TB cases in South Africa in
451 2016 was 967 (5).

452 Monoresistance rates of RIF, INH, EMB, STM, CAP, KAN and OFL were 0.01%(n=4), 0.3% (n=163),
453 4.2% (n=2049), 0.01(n=7), 0.1% (n=31), 0.04% (n=20) and 0.01% (n=3). S531L(n=478), D616V
454 (n=149), and 516GTC (n=167) mutations in *rpoB* (25%, n=2053), A542A (n=80) and V483G (n=48)
455 mutations in *rpoC* (2.4%, n=193) and *rpoA* 0.05% (n=4) mutations respectively conferred high-level,
456 low-level and low-level RIF resistance (Fig. 4; Tables S1-S4).

457 The predominant mechanisms conferring resistance to INH were S315T (n=672) in *katG* (21.9%,
458 n=1798) and C15T (n=294) at *inhA* promotor region (9.2%, n=758) whilst M306I mutation (n=472) in
459 *embB* (7%, n= 573) mediated EMB resistance. In addition, A1401G (n=639) and A513C (n=398)
460 mutations in *rrs* (15.1%, n=1241), K43R (n=10) mutation in *rpsL* (0.1%, n=12) and *eis* mutation (n=13)
461 mediated resistance to STM and CAP; *rrs* confers mono and cross resistance to CAP (60.5%, n=75). A
462 high frequency mutation was observed at the *rrs*1400 (n=26) and *rrs*900(n=22) loci of *rrs* (75). As well,
463 D94G (n=218) and A90V (n=168) mutation in *gyrA* 8.9% (n=728) and mutations in *gyrB* (0.7%, n=61)
464 mediated resistance to OFL (Figure 4; Table S4).

465 *Zimbabwe*

466 Takawira *et al* (2017) characterized *rpoB* and *katG* genes in MDR-TB isolates (100%) to respectively
467 determine RIF and INH resistance mechanisms (18). RIF resistance was mainly mediated by *rpoB*
468 (93.5%, n=86) mutations such as S531L and novel ones such as G507S, T508A, L511V, del1513-526,
469 P520P, L524L, R528H, R529Q and S531F; novel mutations such as I572P/F, E562Q, P564S, and Q490Y
470 were outside the RIF resistance determining regions (Tables S1-S3). Inconsistencies between genotypic
471 and phenotypic assay results for both *katG* and *rpoB* genes were observed (18).

472 ***Molecular epidemiology: Lineage and family distribution***

473 All the seven lineages of *M. tb* species and *M. bovis* were found in the included studies with varying
474 distribution frequencies per country (Figures 6 and S1). The Euro-American Lineage (Lineage 4) had the
475 largest frequency distribution among all the lineages in Africa, followed by Beijing (Lineage 2), Central
476 Asian (Lineage 3), West African I (Lineage 5) and II (Lineage 6), Indo-Oceanic (Lineage 1), Ethiopian
477 (Lineage 7) and *M. bovis* (Lineage 8) lineages. The frequency distribution of the sub-lineages among
478 these eight lineages are shown in Figure S1, and these varied per country. For instance, most of the
479 Beijing strains were reported from South Africa whilst the T and LAM sub-lineages were very common
480 in Northern, Eastern and Southern African countries; specifically, the T lineages were very dominant in
481 most of the countries (Fig. 6). The H family was also commonly found in Northern Africa. As expected,
482 the CAS strains were very common in Central and Eastern Africa, Madagascar, and Malawi, whilst the
483 West African I and II strains, the Cameroon strains, and Sierra Leone strains were mainly found in West
484 African countries such as Nigeria, Ghana, Cameroon, Chad, Senegal, and Sierra Leone. Furthermore, the
485 Congo and Uganda strains were more prevalent in Central and Eastern Africa whilst EAI lineages were
486 reported from mainly Guinea, Guinea Bissau, Eastern and Southern African countries (Fig. 6 and S1;
487 Supplementary dataset 2).

488 ***Phylogenomics: evolutionary genomic epidemiology***

489 The relationship between deposited resistant and susceptible *M. tb* isolates at GenBank/PATRIC is shown
490 in Figure 7, with Figures 7a and 7b being phylogenomic trees of both resistant and susceptible strains

491 while Figures 7c and 7d represent only resistant strains. The lineages and sublineages of the individual
492 strains were not included in their metadata and could thus not be included in the trees. Most of the isolates
493 were from South Africa, Swaziland, Mali, and Uganda, and these are shown as unique colours on the
494 trees. Most of the resistant isolates were from South Africa. Notably, there was relatively minor trans-
495 boundary transmission of closely related strains/clones while most of the isolates were localized within
496 countries.

497 ***Diagnostics***

498 Phenotypically, the BACTEC MGIT 960 system and the agar proportion methods were commonly used
499 to diagnose *M. tb* and determine antibiotic sensitivity from clinical specimens. The methods and
500 instruments used differed from country to country (Tables 2, S3 & S5). Molecular tests such as PCR and
501 amplicon sequencing, Hain's line probe assays (GenoType®MTBDR), GeneXpertMTB/RIF and
502 currently, WGS, were commonly used in 122 studies to both identify and determine drug resistance in *M.*
503 *tb*. More studies from South Africa (n=33) and Ethiopia (n=13) used molecular methods to both detect *M.*
504 *tb* and ascertain its resistance profile (Tables S3 & S5).

505 **4. Discussion**

506 The epidemiology of antitubercular drug resistance in Africa, as shown in this review, is phylogenetically
507 limited to countries than across countries, and were mediated by non-lineage-specific mutations. Notably,
508 INH and RIF, which are the most important and main first-line anti-TB drugs, had the most resistance
509 prevalence in many African countries. The high proportion of INH resistance could be due to the relative
510 ease and alacrity with which resistance mutations developed to this antibiotic. The genes in which
511 mutations usually occur to confer resistance to first-and second-line anti-TB antibiotics include: *rpoB*,
512 *rpoA*, and *rpoC* (RIF); *katG* and *inhA* (INH); *pncA* (PZA); *embCAB* (EMB); *rpsL*, *rrs*, and *gidB* (STM);
513 *rrs* and *eis* (KAN/AMK); *rrs* and *tlyA* (CAP); *gyrA* and *gyrB* (Fluoroquinolones); *ethA*, *ethR*, and *inhA*

514 (ETM); *thyA* and *ribD* (Para-aminosalicylic-acid); *alr*, *ddl*, and *cycA* (Cycloserine); *atpE* (Bedaquiline);
515 *rrl* and *rplC* (Linezolid) (2, 27, 76).

516 RIF is a broad-spectrum drug that interferes with the synthesis and elongation of mRNA by binding to the
517 β -subunit of RNA polymerase, an enzyme encoded by the *rpoB* gene in *M. tb*. Mutations occurring in the
518 81bp hypervariable region of the *rpoB* gene reduces the binding affinity of RIF to RNA polymerase,
519 leading to RIF resistance in 96% of RIF-resistant isolates (29). RIF resistance-conferring mutations in the
520 *rpoB* gene mainly occurs between codon 507 and 533, which is called the RIF-resistance-determining
521 region (RR-DR) (48, 49). In most cases, mutations that occurred at codon 531 and 526 results in RIF
522 resistance (48). Abbadi *et al* (2009) observed that 76% of resistance-conferring mutations in the *rpoB*
523 gene in Egypt was due to **S351L** (47). Abate *et al* (2014) also revealed that 68.7% of RIF-resistant strains
524 in Ethiopia had mutations at codon 531 (**S531L**) (48). Moreover, *rpoB* mutations at codons 531 and 526
525 have been reported by several studies in different African countries to confer RIF resistance (36, 47, 48,
526 64, 77-81). As well, *rpoB* mutations at codon 516 has been reported by other studies to confer RIF
527 resistance (Tables S1-S4).

528
529 INH is a prodrug that needs activation by a catalase enzyme encoded by the *katG* gene. Mutations in the
530 *katG* gene, most commonly occurring at codon 315, lower catalase-peroxidase activity and result in high-
531 level INH resistance. Feuerriegel *et al.* (2012) (66) and Abate *et al* (2014) (48) respectively found that
532 72% and 93% of *katG* gene mutations occurred at codon 315 (**S315T**) in Sierra Leone and Ethiopia.
533 These have been corroborated by several studies from different African countries, which also found
534 mutations at codon 315 in *katG* as mediating high-level INH-resistance (Figures 3-6; Tables S1-S4).
535 Mutations at the promotor region of *inhA* also induce low-level INH resistance (Figures 3-6; Tables S1-
536 S4)(29). The *inhA* mutations also mediate resistance to another second-line drug, ETM, due to the similar
537 molecular structure of the two drugs (29). Activated INH prevents the synthesis of mycolic acids by

538 inhibiting NADH-dependent enoyl-ACP reductase, which is encoded by *inhA* (29). N'Guessan *et al.*
539 (2016) showed that 45% of *inhA* mutations contributed to INH resistance in Ivory Coast(63).

540 The high proportion of INH resistance could be due to the easy propensity for resistance mutation to be
541 developed in *katG* and *inhA*. Ba Diallo *et al.* (2017) in Chad, from their study on the emergence and
542 clonal transmission of MDR-TB, found 13.5% INH-mono-resistance (24) while N'Guessan *et al* (2008) in
543 Côte d'Ivoire reported 8.7% INH-mono-resistance (64); three previous studies in Egypt reported 7%, 4%,
544 and 12.5% INH-mono-resistance rate (2, 47, 54). Considerable proportion of INH mono-resistance rate
545 i.e., 1.7%-11.6%, was also reported from Ethiopia (12, 78, 83, 84), and 7.4%-10.9% in Ghana (19, 61,
546 85), with INH mono-resistance in Ghana increasing from 2015 to 2018: in 2015, it was 8.2% (n=43/525)
547 (19), in 2016 it was 7.4% (n=111) (61), and in 2018, it was 10.9% (n=18) (85). However, the highest
548 INH-mono-resistance rate, i.e. 13.5 % (42 INH mono-resistant isolates), was in Chad (24) (**Figure 2b**).

549
550 EMB, a first-line TB drug, interferes with the biosynthesis of cell wall arabinogalactan (66). Several
551 studies reported that 50% of EMB resistance is mainly due to mutation in *embB* gene at codon 306 (66,
552 81). In agreement to this, other previous studies have shown that common *embB* gene mutations
553 conferring EMB resistance occurred at codon 306 (32, 35, 45, 72, 86, 87). Feuerriegel *et al* (2012) (66)
554 and Dookie *et al* (2016) (88) revealed that 46.7% and 86% of EMB resistance was due to *embB* gene
555 mutation(s) at codon 306 in Sierra Leone and South Africa respectively; in the study by Dookie *et al*
556 (2016), 90.7% of isolates with EMB resistance had mutations in the *embB* gene (88). In addition, other
557 common mutations in *embB*, besides those at codon 306, confer EMB resistance in different African
558 countries (32, 35, 45, 72, 86, 87). EMB mono-resistance in Sudan was 1.3% (n=3) (11), but the
559 mechanisms of resistance (gene mutation) was not determined, which could be due to the diagnostic they
560 used. This result was similar to that from Egypt, which was 1.9% (2, 47); but less than that of
561 Mozambique (2.8%, n=9) (58) and higher than that of South Africa (0.01%, n=4) (89).

562

563 STM is an aminocyclitol glycoside antibiotic, which hinders the initiation of translation by binding to the
564 16S rRNA. STM resistance is mostly mediated by mutations in the *rrs* or *rpsL* gene, which alters the
565 STM-binding region to prevent STM binding. Mutations in *rrs* and *rpsL* genes have been identified in
566 more than 50% of the STM-resistant isolates, with the most common *rpsL* mutation being at codon K43R
567 and K88R (29). Aubry *et al* (2014) reported that 19% of STM-resistance was due to K43R mutation in
568 *rpsL* in Congo (67). A similar finding was reported by Abbadi *et al* (2009) in Egypt, where 13.2% of
569 *rpsL* mutations occurred at codon K43R and K88R (47). Similar findings of *rpsL* mutation at K43R and
570 K88R has been reported by other studies (32, 36, 38, 66). Furthermore, mutation(s) in the *gidB* gene,
571 which encodes a conserved 7-methylguanosine methyl transferase specific for the 16S rRNA, can mediate
572 low-level STM resistance. Tekwu *et al.* (2014) revealed that 11.1% (n=7) of STM-resistance was due to
573 *gidB* mutation at different hotspot regions in Cameroon (68). One study from Sierra Leone revealed that
574 50% of STM-resistance was due to *gidB* mutation (66).

575
576 The STM mono-resistance rate in Africa was found to be 0.1% (57 STM mono-resistant isolates), being
577 lower than that reported in individual countries: 14.4% (66) in Sierra Leone, 10% in Sudan and 7.9% in
578 Egypt. The highest EMB monoresistance was reported from Mozambique i.e. 2.8% (n=9 isolates).
579 Monoresistance to all the three second-line injectable drugs was reported from South Africa: CAP
580 (0.05%, n=31 isolates), kanamycin (KAN) (0.03%, n=20 isolates) (Table S1-S3).

581 Feuerriegel *et al* (2012) conducted molecular sequencing analysis of first-line anti-TB drugs to
582 characterize the mechanisms of resistance. The study identified different amino acid/codon changes in
583 drug sensitive strains as well (66), implying that the presence of different amino acid/codon change at the
584 hotspot region of certain genes does not corroborate a drug-resistant phenotype.

585 ***MDR & XDR rates***

586 MDR rates in the various countries are substantial and worrying, given the higher mortalities associated
587 with MDR phenotypes. Besides South Africa, Ethiopia, and Ghana, where a substantial number of studies

588 involving numerous isolates were used, the MDR rates in most of the studies undertaken in the other
589 countries involved relatively few strains. Nevertheless, countries with lesser sample numbers but higher
590 MDR rates requires urgent attention. For instance, Swaziland and Zimbabwe had very high MDR rates
591 although their sample sizes were smaller. The dearth of comprehensive studies to identify MDR strains in
592 Africa should be urgently addressed to aid policy decisions with regards to TB interventions.
593 Furthermore, XDR rates were obtained only from South Africa as the studies from other countries did not
594 provide such data. This implies that other African countries had limitations to detect XDR-TB, due to
595 either financial constraints or unavailability of molecular diagnostic assays for detecting and
596 characterizing Pre-XDR and XDR-TB. This confirms the need to increase *M. tb* resistance epidemiology
597 studies in Africa to inform evidence-based decisions.

598
599 The MDR rates obtained in this study either varied or agreed with those from the national survey reports
600 of the respective countries. The MDR rate in morocco was 2.6% (n=26) and was comparable with the
601 2016 estimated incidence rate of MDR/RR-TB cases, which was 1.8/100,000 (5); the 2016 national
602 survey reported that the MDR/RR-TB cases among previously treated cases was 11% (5). However, the
603 2016 national Sudan survey report showed that the MDR/RR-TB in new and previously treated case were
604 2.9% and 13%, respectively; the incidence rate of MDR/RR-TB was 3.1/100,000 (5). This result was
605 higher than the report from Morocco (2.6%) (23), Egypt (12%) (47), and Ethiopia (23.9%) (48). The
606 MDR rate in Tunisia i.e. 0.9% (n=12) (90) (Figure 2D), tallied with the country's 2016 estimated
607 incidence of MDR/RR-TB, which was 0.4/100,000; MDR/RR-TB cases among new and previously
608 treated cases were 0.93 % and 4.2%, respectively (5). In 2016, the estimated incidence of MDR/RR-TB in
609 Ghana was 3/100,000; however, the 2017 national survey reported that MDR/RR-TB case among new
610 and previously treated cases were 1.5% and 7%, respectively (5).

611 In neighboring Ivory Coast, an MDR rate of 87.3% (n=55) (63), which was virtually similar to the 2017
612 national survey report, was reported. In 2016, the estimated incidence of MDR/RR-TB in Ivory Coast was

613 8.9/100,000 whilst the 2017 national survey on MDR/RR-TB case among new and previously treated
614 cases were 4.6% and 22%, respectively (5). The MDR rate in Egypt was comparable to the 2011 national
615 survey report, which had 14% MDR/RR in new TB cases, but lower than the 2016 national survey report
616 for MDR/RR cases (20%) among previously treated cases (5).

617 ***Molecular epidemiology***

618 Molecular genotyping is a significant tool for tracing genotype/strain distribution in different
619 geographical settings. These techniques can predict transmission rates and identify dominant strains in
620 limited settings, strains that stand a chance of spreading and those related to outbreaks (42), severe
621 disease (41), and drug resistance. Isolates with a very close phylogenomic relationship are more likely to
622 have evolved from the same ancestor at some point and their presence in the same patient may suggest
623 within-host evolution or exposure to multiple patients who were infected from the same or closely related
624 strains. Such closely related strains provide invaluable data on disease transmission epidemiology (91).
625 Spoligotyping, MIRU-VNTR and/or whole genome sequencing techniques used in the included studies
626 reported diverse *M. tb* genotypes/lineages across Africa; out of the 41,520 isolates
627 characterized/genotyped, only 99.7% (41,403 genotypes) were identified and found under the
628 international database.

629
630 Notably, both the phylogenomics and the lineage/family distribution per country support localized or
631 regional distribution of specific strains, although the T and LAM families under lineage 4 were more
632 extensively distributed throughout Africa. The extensive distribution of lineage 4 and its specific sub-
633 lineages such as T throughout Africa is worthy of attention, particularly as the reason for this is unknown.
634 The country- and region-specific prevalence of the lineages suggests limited intercountry spread of *M. tb*
635 in Africa as there were more intra-country dissemination of *M. tb* strains, with KZN strains being mainly
636 found in the KwaZulu-Natal Province of South Africa. This could suggest a limited intercountry

637 migration in Africa. Moreover, the presence of diverse lineages in South Africa could be also explained
638 by the immigration of several Africans, Asians and Europeans into South Africa.

639
640 We could not establish a relationship between individual strains/lineages and specific mutations, contrary
641 to what has been reported. For instance, atypical Beijing lineages in Africa were shown to be associated
642 with specific amino acid changes in genes including *rpoB* (D516V), *katG* (S315T), *inhA* (G17T), *embB*
643 (M306I), *rrs* (A513C, A1401G) (35, 45, 86). Muller *et al.*, (2013) mentioned that R86 strains have high
644 degree of clustering for drug resistance mutation patterns that affects more than 40% of all MDR patients,
645 including mutations associated with resistance to first and second-line antibiotics (35). However, meta-
646 analyses of the collated data shows that these mutations are also found in other strains and lineages in
647 almost all countries. The presence of similar mutations in different lineages and countries suggests that
648 such mutations are not lineage or country specific (Table S4 & S6). We thus believe that the limited view
649 provided by the relatively small sample sizes used in individual studies per country could not provide a
650 wholistic overview of resistance mutation distribution per lineage, leading to a skewed conclusion.

651
652 In cases where lineages or families in certain countries and studies have been shown to be more resistant
653 to certain antibiotics, caution should be exercised in generalizing such results as the local TB management
654 culture, diagnostics used and endemic/circulating drug-resistant strains could be determining factors.
655 Even when lineages and families were found to be more resistant to certain antibiotics, the underlying
656 resistance mechanisms differed between studies and/or lineages/families. Furthermore, where such
657 lineage-specific mutation observations have been made in one country, it has not been found to be the
658 case in all other countries, limiting its widespread application (Tables S1-S6). Some few examples below
659 shall suffice.

660
661 Ba Diallo *et al.*, in Chad, identified that SIT61(Cameroon family) had higher proportion of resistance to
662 RIF, INH and PZA, being respectively mediated by mutations in *rpoB* (S531L), *katG* (S315T1) and *pncA*

663 (Del143R) (24). In agreement to this, Otchere *et al* (2016) in Ghana reported that Lineage-4 (Cameroon
664 family) had higher rates of RIF and INH resistance, also mediated by mutations in *rpoB* (S450L), *rpoC*
665 (G332R), *katG* (S315T) and *inhA* (G204D), respectively (61). In Ethiopia, the Haarlem sub-lineage was
666 more resistant to INH, with a common gene mutation at *katG* (S315T) (83), whilst the CAS-Delhi sub-
667 lineage was more resistant to RIF through mutations at *rpoB* (Codon 447-452) (92). Furthermore,
668 Feuerriegel *et al.*(2012) showed that drug-resistant LAM strains harboured various resistance mutations
669 in *rpoB* (D516Y and S531L), *katG* (S315T and Q471R), *inhA* (C15T), *embB* (M306I and W332R), *rpsL*
670 (K43R), and *gidB* (G69D, G92D, L16R, A161A and Q127Stop) (66). As well, Bwalya *et al.*, (2018)
671 observed that CAS1-KILI expressed resistance to PZA, mediated by mutations at codons S65S and D8N
672 while LAM11-ZWE had mutations at codons Q10R, D80N, G97A, W119C, R154G and A171V
673 (50)(Table S4 & S6). The presence of the above-stated mutations in other lineages and countries is
674 evident in Tables S1-S4 & S6, making it difficult to conclude on a country- or lineage-specific association
675 of resistance mutations.

676 ***Diagnostics used for detecting TB and determining TB resistance in Africa***

677 In several resource-limited African countries, diagnosing drug-resistant TB is more challenging due to
678 inadequate bacteriological laboratory facilities and/or skill (20, 82). Molecular diagnostic methods have
679 an advantage over phenotypic methods particularly due to their short turnaround time and accurate
680 diagnostic result (20). A major concern with molecular tests is their ability to detect *M. tb* DNA even in
681 latent or cured TB patients, resulting in false positives. This is because TB DNA can persist in patients
682 long after treatment. is the Currently, different molecular diagnostic methods are available to test
683 mechanisms of drug resistance (gene mutations) to a particular antibiotic (20, 26). Essentially, they all
684 work through a DNA amplification technique and can be classified into real-time polymerase chain
685 reaction (RT-PCR) assays, solid phase hybridization assays and sequencing technologies (20). The recent
686 advances and applications of WGS is however revolutionizing the diagnosis of TB and drug resistance
687 owing to its higher sensitivity, specificity, typing resolution and comprehensiveness, although its use in

688 Africa is still limited due to its higher cost and advanced skill required (Tables 2, S1-S3) (93). Unlike
689 culture-based tests, molecular methods do not need viable cells to diagnose TB and TB resistance, which
690 can also lead to false positives as TB DNA can remain in the host long after its death (94).

691 *Line Probe Assay*

692 The line probe assays (LPAs), GenoType[®]MTBDR*plus* and GenoType[®]MTBDR*sl* (Hain Lifescience,
693 Nehren, Germany) are the most commonly performed molecular diagnostic tests to detect and
694 characterise mechanisms of drug resistance in Africa (Tables 2, S1-S3, S5). GenoType[®]MTBDR*plus* can
695 detect MDR-TB i.e., resistance to RIF and INH by detecting *rpoB*, *katG* and *inhA* promoter region
696 mutations whilst GenoType[®]MTBDR*sl* can detect XDR-TB by identifying both *M. tb* and its resistance
697 (*gyrAB* mutations) to fluoroquinolones (e.g. ofloxacin and moxifloxacin) and second-line injectable drugs
698 i.e., *rrs* and *embB* (17, 58). LPAs use immobilized probes on a solid support to detect specific *M. tb* DNA
699 targets and resistance-conferring mutations from smear-positive sputum samples or culture isolates, after
700 extraction and amplification of the DNA (79, 82); the probes are attached to a nitrocellulose strip (77).

701 The sensitivity and specificity of MTBDR*plus* (version 2) in detecting RIF and INH from culture were
702 100% and 87.9% respectively for RIF, and 100% and 94.4% respectively for INH (79). The same study
703 evaluated the sensitivity and specificity of MTBDR*sl* (version 1 and 2) in detecting EMB and other
704 second-line drugs from cultured isolates and reported the following: EMB (60% and 89.2%), OFL (100%
705 and 91.4%), KAN (100% and 97.7%); agreements between the LPAs and MGIT were very high for INH
706 ($k=0.93$), good for RIF, OFL, and KAN ($k=0.6-0.7$) and moderate for EMB ($k=0.5$) (79). Another study
707 showed the sensitivity and specificity of MTBDR*plus* to detect RIF, INH and MDR to be respectively
708 98.9% and 99.4% for RIF, 94.2% and 99.7% for INH, and 98.8% and 100% for MDR compared with
709 conventional results (26). Similar studies by Bedawi *et al.*(2016) revealed that the sensitivity and
710 specificity of MTBDR*plus* for RIF and INH resistance were 80% and 99.6%, and 82.7% and 99.6%
711 respectively while the MDR results were 75% and 100% respectively (12).

712 MTBDR*plus* has several limitations in its application. For example, the amino acid sequence cannot be
713 screened; hence, silent mutations(s) in the probe region can result in the absence of one of the wild type
714 bands. Moreover, this method only screens the gene mutation in the locus of interest (target region) in the
715 *rpoB*, *katG* and *inhA* gene regions (33). Resistance due to gene mutation outside of the gene locus of
716 interest will not be detected. Finally, MTBDR*plus* may not be used for monitoring the progression or
717 success of treatment of patients with antimycobacterial therapy.

718 *Xpert MTB/RIF assay*

719 The GeneXpertMTB/RIF assay, which was endorsed by WHO in 2010 for the accurate laboratory
720 diagnosis of TB and drug resistance as well as to increase case detection rates in resource-limited
721 countries, is another commonly used diagnostic method in Africa (Tables 2 & S5). It is a real-time PCR-
722 based technique used for detecting *M. tb* and RIF resistance using a single-use cartridge with a turnaround
723 time of 2 hours (1, 94). The detection of *M. tb* and its RIF resistance can be done in an integrated and
724 closed system, and sample processing is automated (95). Unlike the LPA, GeneXpert can only detect TB
725 and RIF resistance and has low sensitivity to smear-negative samples. Helb *et al.* (2010) observed an
726 overall sensitivity of 98-100% and 72% sensitivity in smear-negative samples (96). Though the Xpert
727 assay is preferred due to its simplicity, rapidity, higher sensitivity, ease and safety during sample
728 processing and handling, its application in resource-limited countries is hampered by cost (5). Hence, few
729 African countries such as South Africa has implemented Xpert assay as the baseline diagnostic method
730 for pulmonary TB (97).

731 *Conventional and real-time PCR*

732 Besides commercial diagnostics, PCR is also used to amplify targeted regions of the *M. tb* genome, which
733 is afterwards sequenced with the ABI PRISM DNA sequencer (Applied Biosystems, Foster City, CA)
734 (Tables 2, S1-S4). Real-time PCR methods however, which is based on hybridization of amplified DNA
735 with fluorescent-labeled probes across DNA regions of interest (78), can detect both TB and its resistance
736 mechanisms (98). The amount of amplified DNA is directly proportional to the fluorescence signal, which

737 can be controlled on-line (20). Different types of probes including TaqMan probe, fluorescence
738 resonance energy transfer probe, molecular beacons, and bioprobes are commonly used (35, 86, 99).
739 However, designing a probe for each single nucleotide polymorphism (SNP) is costly (100); Beacon and
740 TaqMan probes identify commonly encountered SNPs in *katG* and *rpoB*, (20, 55, 101). Fluorescence
741 resonance energy transfer probes can identify multiple SNPs at a cheaper cost, making them ideal for
742 initial screening tests; however, they require two rounds of PCR amplification. (47). Real-time PCR not
743 only allow detection of targeted gene(s) or mutation(s), but also enables quantification of gene expression
744 (55). The other main advantages of real-time PCR methods are their short turnaround time (result can be
745 available 1.5-2.0h after DNA extraction) and low risk of contamination due to its closed single-tube
746 system (20). However, the equipment and reagents are expensive, and the techniques need well-trained
747 personnel; thus, its application in resource-limited countries are limited.

748 WGS

749 The advantages of WGS in TB diagnosis, typing and resistance detection has informed its adoption as a
750 routine tool in the UK for all suspected TB cases, a feat which is far in the future for Africa (94, 102).
751 Unlike other molecular methods, WGS provides DNA sequence information of the whole genome,
752 enabling the detection of hetero-resistance (both resistant and susceptible subpopulations) in mixed *M. tb*
753 populations, as well as detection of known and previously uncharacterized/unknown gene mutations
754 (103). However, not all gene mutations detected through WGS might confer drug resistance due to hypo-
755 or non-expression (52, 104). Although WGS is expensive and not easily available for routine detection of
756 drug resistance gene mutations, it is the most reliable method to study pleiotropic and polygenic genes
757 that may be involved in resistance to single or multiple drugs (20, 36). Hence, to understand the complete
758 drug resistance determinants in *M. tb* strains, in-depth DNA sequencing (WGS) could be performed (66).
759 However, for mutations concentrated/restricted to short segments of the genome or a gene, such as *rpoB*
760 gene analysis for RIF resistance, PCR-based targeted sequencing is expedient (47). One study reported

761 that WGS improved PZA resistance detection with a sensitivity of 97% and specificity of 94%; WGS was
762 used as gold standard to resolve discordance results from conventional methods (105).

763
764 Sanger sequencing is the oldest WGS platform and works by chain termination while Illumina, which is
765 the most common platform in the market currently, uses sequencing by synthesis and is better in its speed
766 and length of readout, producing an overwhelming 1GB of nucleotide per run (106). Pyrosequencing is
767 another sequencing-by-synthesis technique, which is used by the Roche 454 platforms for short read
768 sequencing and has been utilized for *M. tb* drug resistance detection (107). Marttila *et al.* (2009) revealed
769 that the sensitivity of pyrosequencing was 97.4% and 66.7% for accurate detection of RIF and INH
770 resistance, respectively (107). In another study, this technique detected important mutations in the *rpoB*
771 gene in 96.7% of RIF-resistant strains, in *katG* for 64% of INH-resistant strains, and in *gyrA* for 70% of
772 OFL-resistant isolates (108). Pyrosequencing was preferred over the Sanger method due to its improved
773 turnaround time. However, it is limited by its short-read lengths (up to 20-50 nucleotides) (109).
774 Currently, the Illumina, PacBio and Nanopore sequencers are increasingly being used in well-resourced
775 laboratories to diagnose and type *M. tb* (94).

776 ***Molecular genotyping techniques***

777 ***IS6110 RFLP***

778 Molecular genotyping is a vital technique for the understanding of TB epidemiology. These techniques
779 can predict transmission rates and identify dominant strains, strains that stand a chance of spreading and
780 those related to outbreaks (42), severe disease (41), and drug resistance. Evidently, patients with
781 genotypically clustered strains are epidemiologically related, representing recent transmissions (91). The
782 first *M. tb* DNA typing technique to be widely employed was restriction fragment length polymorphism
783 (RFLP). Its standardized protocol was published in 1990 and is currently still used (110). The RFLP
784 technique makes use of *IS6110* insertion sequence (110). There are up to 25 copies of *IS6110* commonly
785 found in almost all strains of *M. tb* complex (111), but not present in any other species. *M. tb* strains are

786 differentiated by looking at the number and position of *IS6110* as it varies between strains. The *IS6110* is
787 the current gold standard for *M. tb* complex genotyping, given its superior discriminatory power over
788 other genotyping methods for *M. tb* complex (112).

789 Isolates from patients infected with epidemiologically unrelated strains of tuberculosis have different
790 RFLP patterns, whereas those from patients with epidemiologically related strains have identical RFLP
791 patterns (112). However, RFLP can only detect strains with fewer than six *IS6110*, necessitating the use
792 of other supplementary genotyping methods (112). Moreover, it is slow, cumbersome, labor-intensive,
793 technically demanding and requires a relatively large amount (2 μ g) of high-quality DNA. In addition, the
794 interpretation of data can be prone to errors. To get the required amounts of DNA, substantial colonies
795 must be grown from a clinical sample, which can take four to eight weeks of culturing. Furthermore, the
796 technique has poor discriminatory power for isolates with less than six copies of *IS6110*. Further
797 technological refinements resulted in the development of PCR-based methods, which are easier to
798 perform, require relatively smaller amounts of genomic DNA, and can be applied to non-viable bacteria
799 or directly to clinical samples (113).

800 *MIRU-VNTR typing*

801 In 2001, a rapid, reproducible typing method based on a variable number of tandem repeats (VNTR),
802 using 12 mycobacterial interspersed repetitive units (MIRU), was developed (114). The MIRU-VNTR
803 method has a resolution power close to that of *IS6110* RFLP when used in typing mycobacterial isolates.
804 MIRU are short (40-100bp) DNA elements found as tandem repeats and dispersed in intergenic regions in
805 the genome of *M. tb* complex (115). It is not yet known whether they are junk DNA, or whether they
806 contribute to biological function within organisms. Strain analysis is done by observing the number of
807 repeats at different loci as they vary per strain. The number of strain loci can influence the interpretation
808 of recent transmission rates, and therefore, an estimation of the rate of clustering; the number of loci that
809 can be used are 12, 15, and 24 (116-118). The type strain is assigned 12 digital numbers corresponding to
810 the number of repeats at each MIRU locus, forming the basis of a coding system that facilitates inter-
811 laboratory comparisons. Moreover, relative to the *IS6110* RFLP typing, MIRU-VNTR profiling is fast,

812 appropriate for specific strains regardless of their *IS6110* copy number and permits rapid comparisons of
813 global strains using a binary data classification system. Recently, a set of 24 MIRU-VNTR loci having
814 higher discriminatory power than the 12-locus system was described, which results in greater
815 performance than the combined resolution of both RFLP and spoligotyping (119, 120). Spoligotyping is a
816 rapid additional typing method used to increase the discriminatory power of MIRU-VNTR typing (121).

817 *Spoligotyping*

818 Spoligotyping is a PCR-based typing method that shows the presence or absence of unique spacer
819 sequences, which are found between the direct repeat sequences of the direct repeat (DR) region (113).
820 The DR region contains similar multiple 36bp regions interspersed with non-repetitive spacer sequences
821 of a similar size. As a PCR based method, small amounts of DNA are required. The result of
822 spoligotyping can be expressed in digital format (113, 122).

823 *WGS*

824 High throughput genome sequencing technology have an advantage over traditional genotyping methods
825 in distinguishing strains in populations with a high burden of *M. tb* and to assess the rate of transmission
826 in these settings (72, 123). Currently, the molecular typing techniques used for epidemiological and
827 evolutionary applications are *IS6110* RFLP, MIRU-VNTR and spoligotyping. However, recent studies
828 indicate strains with quite similar DNA fingerprinting patterns may harbor considerable genomic diversity
829 (14, 72). Hence, the application of WGS enables detailed understanding of the genetic diversity and
830 phylogeny of drug-resistant *M. tb* complex strains found in certain geographical areas (14, 93, 124). WGS
831 can discriminate relapse TB from re-infection and its resolution has greater advantage over traditional
832 genotyping technologies (93, 100).

833 Currently, there are different types of NGS platforms with high and moderate throughputs, such as:
834 Illumina (MiSeq, HiSeq, NextSeq and iSeq); Bio-Rad Laboratories (GnuBio); Thermo Fisher (SOLiD,
835 S5, personal genome machine [PGM], Proton); Oxford Nanopore (minION, PromethION, GridION);
836 PacBio (Sequel I, II and RS2); Qiagen (GeneReader); Vela Diagnostics NGS platform (Singapore). Most

837 of these sequencing technologies are used in only high-level (at referral-level) facility, with a few being
838 used in intermediate-level facilities (e.g. the minION, MiSeq and PGM). Although WGS is a highly
839 promising technology in the control of TB disease, it has several drawbacks to its application for clinical
840 use. Few of the challenges are: high amount and quality DNA are required; highly trained staff is needed
841 for sample preparations, processing and sequencing; large amount of raw data generated by NGS and
842 WGS presents challenge to users who are unfamiliar with bioinformatics skills (94).

843 **5. Conclusions, limitations and recommendations**

844 The molecular epidemiology, diagnostics, resistance mechanisms and rates in *M. tb* complex strains are
845 herein characterized on a country-by-country basis and in Africa, with INH and RIF resistance being
846 more pronounced in almost all countries. Notably, all the eight *M. tb* lineages were found in Africa, but
847 with different frequencies per country. As well, the clades of *M. tb* strains were more locally based than
848 transnational, suggesting minimal intercountry spread of same clones within Africa. Furthermore, the
849 resistance mutations underlying antibiotic resistance in *M. tb* were myriad, with specific mutation
850 hotspots being commonly found in all lineages and countries on the continent. Obviously limited by skill,
851 cost and accessibility to modern laboratories, the MDR rates in most of the included studies were
852 obtained from a relatively smaller sample size, albeit the values obtained are worrying, particularly in
853 Zimbabwe, Sudan, Swaziland and South Africa. Unfortunately, the XDR rate could not be determined for
854 all the countries except South Africa, further belying the dearth of necessary skill, adequate budget and
855 well-equipped laboratories to diagnose this life-threatening menace.

856
857 Advances in genomic engineering and whole-genome sequencing (WGS) techniques are increasing our
858 comprehension of this pathogens' resistance mechanisms, which is critical for the development of rapid
859 diagnostics and antitubercular drugs (29, 125-127). The limited number of studies using WGS to
860 characterize strains limited the genomic characterization of the resistance mechanisms and epidemiology,
861 particularly as commercial *M. tb* diagnostics and typing tools only target very small regions of the
862 genome. Subsequently, the resistance mutations identified were repetitive as the same primers, probes and

863 diagnostics were used from country to country. Nevertheless, the monoresistance and MDR rates require
864 urgent attention from the respective countries to help contain TB in Africa.

865 **Role of Funding Source:** Not applicable.

866 **Contributors:** JOS: Conception, study design, analyses, phylogenomics, images/figure design, writing
867 and formatting manuscript. MAR: literature search, analysis, writing portions of manuscript. NEM and
868 PBF: critical reviewing of manuscript.

869 **Funding:** None

870 **Declaration of interests:** The authors declare no conflict of interest.

871 **Acknowledgments:** None

872

References

1. WHO. GLOBAL TUBERCULOSIS REPORT. World Health Organization, 20 Avenue Appia, 1211 Geneva 27, Switzerland: world health organization; 2016. Contract No.: WHO/HTM/TB/2016.13.
2. Abdelaal A, El-Ghaffar HA, Zaghoul MH, El Mashad N, Badran E, Fathy A. Genotypic detection of rifampicin and isoniazid resistant Mycobacterium tuberculosis strains by DNA sequencing: a randomized trial. *Ann Clin Microbiol Antimicrob*. 2009;**8**:4.
3. Muwonge A, Malama S, Johansen TB, Kankya C, Biffa D, Ssengooba W, et al. Molecular epidemiology, drug susceptibility and economic aspects of tuberculosis in Mubende district, Uganda. *PLoS One*. 2013;**8**(5):e64745.
4. Organization WH. Global tuberculosis report 2018. Geneva: World Health Organization; 2018. Licence: CC BY-NC-SA 3.0. IGO. WHO/CDS/TB/2018.20. Available from: [http://apps.who.int/iris/bitstream ...](http://apps.who.int/iris/bitstream...); 2018.
5. Global tuberculosis report 2017. Geneva: World Health Organization; 2017. Licence: CC BY-NCSA 3.0 IGO.
6. Donald PR, van Helden PD. The global burden of tuberculosis--combating drug resistance in difficult times. *N Engl J Med*. 2009;**360**(23):2393-5.
7. Affolabi D, Anyo G, Faihun F, Sanoussi N, Shamputa IC, Rigouts L, et al. First molecular epidemiological study of tuberculosis in Benin. *Int J Tuberc Lung Dis*. 2009;**13**(3):317-22.

8. Assam Assam JP, Penlap Beng V, Cho-Ngwa F, Toukam M, Ngoh AA, Kitavi M, et al. Mycobacterium tuberculosis is the causative agent of tuberculosis in the southern ecological zones of Cameroon, as shown by genetic analysis. *BMC Infect Dis*. 2013;**13**:431.
9. Chaisson RE, Martinson NA. Tuberculosis in Africa—combating an HIV-driven crisis. *New England Journal of Medicine*. 2008;**358**(11):1089-92.
10. Asiimwe BB, Ghebremichael S, Kallenius G, Koivula T, Joloba ML. Mycobacterium tuberculosis spoligotypes and drug susceptibility pattern of isolates from tuberculosis patients in peri-urban Kampala, Uganda. *BMC Infect Dis*. 2008;**8**:101.
11. Abdul-Aziz AA, Elhassan MM, Abdulsalam SA, Mohammed EO, Hamid ME. Multi-drug resistance tuberculosis (MDR-TB) in Kassala State, Eastern Sudan. *Trop Doct*. 2013;**43**(2):66-70.
12. Bedewi Omer Z, Mekonnen Y, Worku A, Zewde A, Medhin G, Mohammed T, et al. Evaluation of the GenoType MTBDRplus assay for detection of rifampicin- and isoniazid-resistant Mycobacterium tuberculosis isolates in central Ethiopia. *Int J Mycobacteriol*. 2016;**5**(4):475-81.
13. Organization WH. Global tuberculosis report 2017. Global tuberculosis report 20172017.
14. Dheda K, Gumbo T, Gandhi NR, Murray M, Theron G, Udwadia Z, et al. Global control of tuberculosis: from extensively drug-resistant to untreatable tuberculosis. *The Lancet Respiratory medicine*. 2014;**2**(4):321-38.
15. Organization WH. Rapid communication: key changes to treatment of multidrug-and rifampicin-resistant tuberculosis (MDR/RR-TB). World Health Organization; 2018.
16. Affolabi D, Sanoussi N, Codo S, Sogbo F, Wachinou P, Massou F, et al. First Insight into a Nationwide Genotypic Diversity of Mycobacterium tuberculosis among Previously Treated Pulmonary Tuberculosis Cases in Benin, West Africa. *Can J Infect Dis Med Microbiol*. 2017;**2017**:3276240.
17. Tessema B, Beer J, Emmrich F, Sack U, Rodloff AC. Analysis of gene mutations associated with isoniazid, rifampicin and ethambutol resistance among Mycobacterium tuberculosis isolates from Ethiopia. *BMC Infect Dis*. 2012;**12**:37.
18. Takawira FT, Mandishora RSD, Dhlamini Z, Munemo E, Stray-Pedersen B. Mutations in rpoB and katG genes of multidrug resistant mycobacterium tuberculosis undetectable using genotyping diagnostic methods. *Pan Afr Med J*. 2017;**27**:145.
19. Asante-Poku A, Otchere ID, Danso E, Mensah DD, Bonsu F, Gagneux S, et al. Evaluation of GenoType MTBDRplus for the rapid detection of drug-resistant tuberculosis in Ghana. *Int J Tuberc Lung Dis*. 2015;**19**(8):954-9.
20. Abebe G, Paasch F, Apers L, Rigouts L, Colebunders R. Tuberculosis drug resistance testing by molecular methods: opportunities and challenges in resource limited settings. *J Microbiol Methods*. 2011;**84**(2):155-60.

21. Bedewi Z, Mekonnen Y, Worku A, Medhin G, Zewde A, Yimer G, et al. Mycobacterium tuberculosis in central Ethiopia: drug sensitivity patterns and association with genotype. *NMNI*. 2017; **17**:74.
22. Mesfin MM, Newell JN, Walley JD, Gessesew A, Madeley RJ. Delayed consultation among pulmonary tuberculosis patients: a cross sectional study of 10 DOTS districts of Ethiopia. *BMC Public Health*. 2009;**9**:53.
23. Karimi H, En-Nanai L, Oudghiri A, Chaoui I, Laglaoui A, Bourkadi JE, et al. Performance of GenoType® MTBDRplus assay in the diagnosis of drug-resistant tuberculosis in Tangier, Morocco. *Journal of global antimicrobial resistance*. 2018;**12**:63-7.
24. Ba Diallo A, Ossoga GW, Daneau G, Lo S, Ngandolo R, Djaibe CD, et al. Emergence and clonal transmission of multi-drug-resistant tuberculosis among patients in Chad. *BMC Infect Dis*. 2017;**17**(1):579.
25. Tessema B, Beer J, Merker M, Emmrich F, Sack U, Rodloff AC, et al. Molecular epidemiology and transmission dynamics of Mycobacterium tuberculosis in Northwest Ethiopia: new phylogenetic lineages found in Northwest Ethiopia. *BMC Infectious Diseases*. 2013;**13**(1):131.
26. Barnard M, Albert H, Coetzee G, O'Brien R, Bosman ME. Rapid molecular screening for multidrug-resistant tuberculosis in a high-volume public health laboratory in South Africa. *Am J Respir Crit Care Med*. 2008;**177**(7):787-92.
27. Cohen KA, Bishai WR, Pym AS. Molecular Basis of Drug Resistance in Mycobacterium tuberculosis. *Microbiol Spectr*. 2014;**2**(3).
28. Ioerger TR, O'Malley T, Liao R, Guinn KM, Hickey MJ, Mohaideen N, et al. Identification of new drug targets and resistance mechanisms in Mycobacterium tuberculosis. *PLoS One*. 2013;**8**(9):e75245.
29. Almeida Da Silva PE, Palomino JC. Molecular basis and mechanisms of drug resistance in Mycobacterium tuberculosis: classical and new drugs. *J Antimicrob Chemother*. 2011;**66**(7):1417-30.
30. Zhang Y, Yew WW. Mechanisms of drug resistance in Mycobacterium tuberculosis: update 2015. *Int J Tuberc Lung Dis*. 2015;**19**(11):1276-89.
31. Homolka S, Meyer CG, Hillemann D, Owusu-Dabo E, Adjei O, Horstmann RD, et al. Unequal distribution of resistance-conferring mutations among Mycobacterium tuberculosis and Mycobacterium africanum strains from Ghana. *Int J Med Microbiol*. 2010;**300**(7):489-95.
32. Ssengooba W, Meehan CJ, Lukoye D, Kasule GW, Musisi K, Joloba ML, et al. Whole genome sequencing to complement tuberculosis drug resistance surveys in Uganda. *Infect Genet Evol*. 2016;**40**:8-16.
33. Daum LT, Rodriguez JD, Worthy SA, Ismail NA, Omar SV, Dreyer AW, et al. Next-generation ion torrent sequencing of drug resistance mutations in Mycobacterium tuberculosis strains. *J Clin Microbiol*. 2012;**50**(12):3831-7.

34. Bhembe NL, Nwodo UU, Govender S, Hayes C, Ndip RN, Okoh AI, et al. Molecular detection and characterization of resistant genes in Mycobacterium tuberculosis complex from DNA isolated from tuberculosis patients in the Eastern Cape province South Africa. *BMC Infect Dis*. 2014;**14**:479.
35. Muller B, Chihota VN, Pillay M, Klopper M, Streicher EM, Coetzee G, et al. Programmatically selected multidrug-resistant strains drive the emergence of extensively drug-resistant tuberculosis in South Africa. *PLoS One*. 2013;**8**(8):e70919.
36. Maningi NE, Daum LT, Rodriguez JD, Said HM, Peters RPH, Sekyere JO, et al. Multi- and Extensively Drug Resistant Mycobacterium tuberculosis in South Africa: a Molecular Analysis of Historical Isolates. *J Clin Microbiol*. 2018;**56**(5).
37. loerger TR, Koo S, No EG, Chen X, Larsen MH, Jacobs WR, Jr., et al. Genome analysis of multi- and extensively-drug-resistant tuberculosis from KwaZulu-Natal, South Africa. *PLoS One*. 2009;**4**(11):e7778.
38. Senghore M, Otu J, Witney A, Gehre F, Doughty EL, Kay GL, et al. Whole-genome sequencing illuminates the evolution and spread of multidrug-resistant tuberculosis in Southwest Nigeria. *PLoS One*. 2017;**12**(9):e0184510.
39. Dheda K, Gumbo T, Maartens G, Dooley KE, McNerney R, Murray M, et al. The epidemiology, pathogenesis, transmission, diagnosis, and management of multidrug-resistant, extensively drug-resistant, and incurable tuberculosis. *The Lancet Respiratory medicine*. 2017.
40. Borgdorff MW, van Soolingen D. The re-emergence of tuberculosis: what have we learnt from molecular epidemiology? *Clin Microbiol Infect*. 2013;**19**(10):889-901.
41. van Crevel R, Ottenhoff TH, van der Meer JW. Innate immunity to Mycobacterium tuberculosis. *Clin Microbiol Rev*. 2002;**15**(2):294-309.
42. Puustinen K, Marjamaki M, Rastogi N, Sola C, Filliol I, Ruutu P, et al. Characterization of Finnish Mycobacterium tuberculosis isolates by spoligotyping. *J Clin Microbiol*. 2003;**41**(4):1525-8.
43. Mathema B, Kurepina NE, Bifani PJ, Kreiswirth BN. Molecular epidemiology of tuberculosis: current insights. *Clinical microbiology reviews*. 2006;**19**(4):658-85.
44. Farhat MR, Jacobson KR, Franke MF, Kaur D, Sloutsky A, Mitnick CD, et al. Gyrase Mutations Are Associated with Variable Levels of Fluoroquinolone Resistance in Mycobacterium tuberculosis. *J Clin Microbiol*. 2016;**54**(3):727-33.
45. Sirgel FA, Warren RM, Streicher EM, Victor TC, van Helden PD, Bottger EC. embB306 mutations as molecular indicators to predict ethambutol susceptibility in Mycobacterium tuberculosis. *Chemotherapy*. 2012;**58**(5):358-63.
46. Stamatakis A. RAxML version 8: a tool for phylogenetic analysis and post-analysis of large phylogenies. *Bioinformatics*. 2014;**30**(9):1312-3.

47. Abbadi SH, Sameaa GA, Morlock G, Cooksey RC. Molecular identification of mutations associated with anti-tuberculosis drug resistance among strains of *Mycobacterium tuberculosis*. *Int J Infect Dis*. 2009;**13**(6):673-8.
48. Abate D, Tedla Y, Meressa D, Ameni G. Isoniazid and rifampicin resistance mutations and their effect on second-line anti-tuberculosis treatment. *Int J Tuberc Lung Dis*. 2014;**18**(8):946-51.
49. de Vos M, Muller B, Borrell S, Black PA, van Helden PD, Warren RM, et al. Putative compensatory mutations in the *rpoC* gene of rifampin-resistant *Mycobacterium tuberculosis* are associated with ongoing transmission. *Antimicrob Agents Chemother*. 2013;**57**(2):827-32.
50. Bwalya P, Yamaguchi T, Mulundu G, Nakajima C, Mbulo G, Solo ES, et al. Genotypic characterization of pyrazinamide resistance in *Mycobacterium tuberculosis* isolated from Lusaka, Zambia. *Tuberculosis (Edinb)*. 2018;**109**:117-22.
51. Sabeel S, Salih MA, Ali M, EL-Zaki S-E, Abuzeid N, Elgadi ZAM, et al. Phenotypic and Genotypic Analysis of Multidrug-Resistant *Mycobacterium tuberculosis* Isolates from Sudanese Patients. *Tuberculosis research and treatment*. 2017;**2017**.
52. Khalid FA, Hamid ZA, Mukhtar MM. Tuberculosis drug resistance isolates from pulmonary tuberculosis patients, Kassala State, Sudan. *Int J Mycobacteriol*. 2015;**4**(1):44-7.
53. Elbir H, Ibrahim NY. Frequency of mutations in the *rpoB* gene of multidrug-resistant *Mycobacterium tuberculosis* clinical isolates from Sudan. *J Infect Dev Ctries*. 2014;**8**(6):796-8.
54. Abdel-Moein KA, Hamed O, Fouad H. Molecular detection of *Mycobacterium tuberculosis* in cattle and buffaloes: a cause for public health concern. *Trop Anim Health Prod*. 2016;**48**(8):1541-5.
55. Chaoui I, Sabouni R, Kourout M, Jordaan AM, Lahlou O, Elouad R, et al. Analysis of isoniazid, streptomycin and ethambutol resistance in *Mycobacterium tuberculosis* isolates from Morocco. *J Infect Dev Ctries*. 2009;**3**(4):278-84.
56. Kourout M, Chaoui I, Sabouni R, Lahlou O, El Mzibri M, Jordaan A, et al. Molecular characterisation of rifampicin-resistant *Mycobacterium tuberculosis* strains from Morocco. *Int J Tuberc Lung Dis*. 2009;**13**(11):1440-2.
57. Ennassiri W, Jaouhari S, Cherki W, Charof R, Filali-Maltouf A, Lahlou O. Extensively drug-resistant tuberculosis (XDR-TB) in Morocco. *Journal of global antimicrobial resistance*. 2017;**11**:75-80.
58. Namburete EI, Tivane I, Lisboa M, Passeri M, Pocente R, Ferro JJ, et al. Drug-resistant tuberculosis in Central Mozambique: the role of a rapid genotypic susceptibility testing. *BMC Infect Dis*. 2016;**16**:423.
59. Bollela VR, Namburete EI, Feliciano CS, Macheque D, Harrison LH, Caminero JA. Detection of *katG* and *inhA* mutations to guide isoniazid and ethionamide use for drug-resistant tuberculosis. *Int J Tuberc Lung Dis*. 2016;**20**(8):1099-104.

60. Umubyeyi AN, Rigouts L, Shamputa IC, Fissette K, Elkrim Y, De Rijk P, et al. Limited fluoroquinolone resistance among Mycobacterium tuberculosis isolates from Rwanda: results of a national survey. *Journal of antimicrobial chemotherapy*. 2007;**59**(5):1031-3.
61. Otchere ID, Asante-Poku A, Osei-Wusu S, Baddoo A, Sarpong E, Ganiyu AH, et al. Detection and characterization of drug-resistant conferring genes in Mycobacterium tuberculosis complex strains: A prospective study in two distant regions of Ghana. *Tuberculosis (Edinb)*. 2016;**99**:147-54.
62. N'Guessan K, Bakayoko AS, Ahui-Brou JM, Kouakou AO, Coulibaly B, Guei A, et al. Extensively drug-resistant Mycobacterium tuberculosis strains isolated in Cote d'Ivoire. *Med Mal Infect*. 2015;**45**(7):303-5.
63. N'Guessan Kouassi K, Riccardo A, Dutoziet Christian C, Andre G, Ferilaha C, Hortense SA, et al. Genotyping of mutations detected with GeneXpert. *Int J Mycobacteriol*. 2016;**5**(2):142-7.
64. N'Guessan KR, Dosso M, Ekaza E, Kouakou J, Jarlier V. Molecular characterisation of isoniazid-resistant Mycobacterium tuberculosis isolated from new cases in Lagunes region (Cote d'Ivoire). *Int J Antimicrob Agents*. 2008;**31**(5):498-500.
65. Dinic L, Akande P, Idigbe EO, Ani A, Onwujekwe D, Agbaji O, et al. Genetic determinants of drug-resistant tuberculosis among HIV-infected patients in Nigeria. *J Clin Microbiol*. 2012;**50**(9):2905-9.
66. Feuerriegel S, Oberhauser B, George AG, Dafee F, Richter E, Rusch-Gerdes S, et al. Sequence analysis for detection of first-line drug resistance in Mycobacterium tuberculosis strains from a high-incidence setting. *BMC Microbiol*. 2012;**12**:90.
67. Aubry A, Sougakoff W, Bodzongo P, Delcroix G, Armand S, Millot G, et al. First evaluation of drug-resistant Mycobacterium tuberculosis clinical isolates from Congo revealed misdetection of fluoroquinolone resistance by line probe assay due to a double substitution T80A-A90G in GyrA. *PLoS One*. 2014;**9**(4):e95083.
68. Tekwu EM, Sidze LK, Assam JP, Tedom JC, Tchatchouang S, Makafe GG, et al. Sequence analysis for detection of drug resistance in Mycobacterium tuberculosis complex isolates from the Central Region of Cameroon. *BMC Microbiol*. 2014;**14**:113.
69. Alame-Emane AK, Pierre-Audigier C, Aboumegone-Biyogo OC, Nzoghe-Mveang A, Cadet-Daniel V, Sola C, et al. Use of GeneXpert Remnants for Drug Resistance Profiling and Molecular Epidemiology of Tuberculosis in Libreville, Gabon. *J Clin Microbiol*. 2017;**55**(7):2105-15.
70. Kidenya BR, Mshana SE, Fitzgerald DW, Ocheretina O. Genotypic drug resistance using whole-genome sequencing of Mycobacterium tuberculosis clinical isolates from North-western Tanzania. *Tuberculosis (Edinb)*. 2018;**109**:97-101.
71. Kibiki GS, Mulder B, Dolmans WM, de Beer JL, Boeree M, Sam N, et al. M. tuberculosis genotypic diversity and drug susceptibility pattern in HIV-infected and non-HIV-infected patients in northern Tanzania. *BMC Microbiol*. 2007;**7**:51.

72. Clark TG, Mallard K, Coll F, Preston M, Assefa S, Harris D, et al. Elucidating emergence and transmission of multidrug-resistant tuberculosis in treatment experienced patients by whole genome sequencing. *PLoS One*. 2013;**8**(12):e83012.
73. Andre E, Goeminne L, Colmant A, Beckert P, Niemann S, Delmee M. Novel rapid PCR for the detection of Ile491Phe rpoB mutation of Mycobacterium tuberculosis, a rifampicin-resistance-conferring mutation undetected by commercial assays. *Clin Microbiol Infect*. 2017;**23**(4):267.e5-.e7.
74. Sanchez-Padilla E, Merker M, Beckert P, Jochims F, Dlamini T, Kahn P, et al. Detection of drug-resistant tuberculosis by Xpert MTB/RIF in Swaziland. *N Engl J Med*. 2015;**372**(12):1181-2.
75. Malinga L, Brand J, Olorunju S, Stoltz A, van der Walt M. Molecular analysis of genetic mutations among cross-resistant second-line injectable drugs reveals a new resistant mutation in Mycobacterium tuberculosis. *Diagn Microbiol Infect Dis*. 2016;**85**(4):433-7.
76. Cuevas-Cordoba B, Zenteno-Cuevas R. [Drug resistant tuberculosis: molecular mechanisms and diagnostic methods]. *Enferm Infecc Microbiol Clin*. 2010;**28**(9):621-8.
77. Meaza A, Kebede A, Yaregal Z, Dagne Z, Moga S, Yenew B, et al. Evaluation of genotype MTBDRplus VER 2.0 line probe assay for the detection of MDR-TB in smear positive and negative sputum samples. *BMC Infect Dis*. 2017;**17**(1):280.
78. Mekonnen D, Admassu A, Mulu W, Amor A, Benito A, Gelaye W, et al. Multidrug-resistant and heteroresistant Mycobacterium tuberculosis and associated gene mutations in Ethiopia. *Int J Infect Dis*. 2015;**39**:34-8.
79. Maningi NE, Malinga LA, Antiabong JF, Lekalakala RM, Mbelle NM. Comparison of line probe assay to BACTEC MGIT 960 system for susceptibility testing of first and second-line anti-tuberculosis drugs in a referral laboratory in South Africa. *BMC Infect Dis*. 2017;**17**(1):795.
80. Rukasha I, Said HM, Omar SV, Koornhof H, Dreyer AW, Musekiwa A, et al. Correlation of rpoB Mutations with Minimal Inhibitory Concentration of Rifampin and Rifabutin in Mycobacterium tuberculosis in an HIV/AIDS Endemic Setting, South Africa. *Front Microbiol*. 2016;**7**:1947.
81. Biadlegne F, Tessema B, Rodloff AC, Sack U. Magnitude of gene mutations conferring drug resistance in mycobacterium tuberculosis isolates from lymph node aspirates in ethiopia. *Int J Med Sci*. 2013;**10**(11):1589-94.
82. Miotto P, Saleri N, Dembele M, Ouedraogo M, Badoum G, Pinsi G, et al. Molecular detection of rifampin and isoniazid resistance to guide chronic TB patient management in Burkina Faso. *BMC Infect Dis*. 2009;**9**:142.
83. Beyene D, Bergval I, Hailu E, Ashenafi S, Yamuah L, Aseffa A, et al. Identification and genotyping of the etiological agent of tuberculous lymphadenitis in Ethiopia. *J Infect Dev Ctries*. 2009;**3**(6):412-9.
84. Tadesse M, Aragaw D, Dimah B, Efa F, Abdella K, Kebede W, et al. Drug resistance-conferring mutations in Mycobacterium tuberculosis from pulmonary tuberculosis patients in Southwest Ethiopia. *Int J Mycobacteriol*. 2016;**5**(2):185-91.

85. Addo KK, Addo SO, Mensah GI, Mosi L, Bonsu FA. Genotyping and drug susceptibility testing of mycobacterial isolates from population-based tuberculosis prevalence survey in Ghana. *BMC Infect Dis*. 2017;**17**(1):743.
86. Klopper M, Warren RM, Hayes C, Gey van Pittius NC, Streicher EM, Muller B, et al. Emergence and spread of extensively and totally drug-resistant tuberculosis, South Africa. *Emerg Infect Dis*. 2013;**19**(3):449-55.
87. Mpagama SG, Houpt ER, Stroup S, Kumburu H, Gratz J, Kibiki GS, et al. Application of quantitative second-line drug susceptibility testing at a multidrug-resistant tuberculosis hospital in Tanzania. *BMC infectious diseases*. 2013;**13**(1):432.
88. Dookie N, Sturm AW, Moodley P. Mechanisms of first-line antimicrobial resistance in multi-drug and extensively drug resistant strains of *Mycobacterium tuberculosis* in KwaZulu-Natal, South Africa. *BMC Infect Dis*. 2016;**16**(1):609.
89. Green E, Obi L, Nchabeleng M, De Villiers B, Sein P, Letsoalo T, et al. Molecular characterisation of resistant *Mycobacterium tuberculosis* isolates from Dr George Mukhari Hospital, Pretoria, South Africa. *Southern African Journal of Epidemiology and Infection*. 2008;**23**(3):11-4.
90. Ben Kahla I, Marzouk M, Henry M, Bedotto M, Cohen-Bacrie S, Ben Selma W, et al. Molecular characterisation of isoniazid- and rifampicin-resistant *Mycobacterium tuberculosis* in Central Tunisia. *Int J Tuberc Lung Dis*. 2011;**15**(12):1685-8.
91. Noguti EN, Leite CQF, Malaspina AC, Santos ACB, Hirata RDC, Hirata MH, et al. Genotyping of *Mycobacterium tuberculosis* isolates from a low-endemic setting in northwestern state of Paraná in Southern Brazil. *Mem Inst Oswaldo Cruz*. 2010;**105**(6):779-85.
92. Tadesse M, Abebe G, Bekele A, Bezabih M, de Rijk P, Meehan CJ, et al. The predominance of Ethiopian specific *Mycobacterium tuberculosis* families and minimal contribution of *Mycobacterium bovis* in tuberculous lymphadenitis patients in Southwest Ethiopia. *Infection, Genetics and Evolution*. 2017;**55**:251-9.
93. Hasnain SE, O'Toole RF, Grover S, Ehtesham NZ. Whole genome sequencing: a new paradigm in the surveillance and control of human tuberculosis. *Tuberculosis (Edinb)*. 2015;**95**(2):91-4.
94. Unitaid. Tuberculosis: Diagnosis technology Landscape 5th edition,. World Health Organization; 2017.
95. Rabna P, Ramos J, Ponce G, Sanca L, Mane M, Armada A, et al. Direct Detection by the Xpert MTB/RIF Assay and Characterization of Multi and Poly Drug-Resistant Tuberculosis in Guinea-Bissau, West Africa. *PLoS One*. 2015;**10**(5):e0127536.
96. Helb D, Jones M, Story E, Boehme C, Wallace E, Ho K, et al. Rapid detection of *Mycobacterium tuberculosis* and rifampin resistance by use of on-demand, near-patient technology. *Journal of clinical microbiology*. 2010;**48**(1):229-37.

97. Omar SV, Peters RP, Ismail NA, Jonkman K, Dreyer AW, Said HM, et al. Field evaluation of a novel preservation medium to transport sputum specimens for molecular detection of *Mycobacterium tuberculosis* in a rural African setting. *Trop Med Int Health*. 2016;**21**(6):776-82.
98. Bedewi Z, Worku A, Mekonnen Y, Yimer G, Medhin G, Mamo G, et al. Molecular typing of *Mycobacterium tuberculosis* complex isolated from pulmonary tuberculosis patients in central Ethiopia. *BMC Infect Dis*. 2017;**17**(1):184.
99. Allana S, Shashkina E, Mathema B, Bablishvili N, Tukvadze N, Shah NS, et al. *pncA* gene mutations associated with pyrazinamide resistance in drug-resistant tuberculosis, South Africa and Georgia. *Emerging infectious diseases*. 2017;**23**(3):491.
100. Bryant JM, Harris SR, Parkhill J, Dawson R, Diacon AH, van Helden P, et al. Whole-genome sequencing to establish relapse or re-infection with *Mycobacterium tuberculosis*: a retrospective observational study. *The Lancet Respiratory medicine*. 2013;**1**(10):786-92.
101. Banu S, Pholwat S, Foongladda S, Chinli R, Boonlert D, Ferdous SS, et al. Performance of TaqMan array card to detect TB drug resistance on direct specimens. *PLoS One*. 2017;**12**(5):e0177167.
102. Makhado NA, Matabane E, Faccin M, Pinçon C, Jouet A, Boutachkourt F, et al. Outbreak of multidrug-resistant tuberculosis in South Africa undetected by WHO-endorsed commercial tests: an observational study. *The Lancet Infectious Diseases*. 2018;**18**(12):1350-9.
103. Daum LT, Fourie PB, Bhattacharyya S, Ismail NA, Gradus S, Maningi NE, et al. Next-generation sequencing for identifying pyrazinamide resistance in *Mycobacterium tuberculosis*. *Clinical infectious diseases*. 2014;**58**(6):903-4.
104. Soudani A, Hadjfredj S, Zribi M, Messaoud T, Masmoudi A, Majed B, et al. First report of molecular characterization of fluoroquinolone-resistant *Mycobacterium tuberculosis* isolates from a Tunisian hospital. *Clin Microbiol Infect*. 2010;**16**(9):1454-7.
105. Maningi NE, Daum LT, Rodriguez JD, Mphahlele M, Peters RP, Fischer GW, et al. Improved Detection by Next-Generation Sequencing of Pyrazinamide Resistance in *Mycobacterium tuberculosis* Isolates. *J Clin Microbiol*. 2015;**53**(12):3779-83.
106. Loman N, Pallen M. XDR-TB genome sequencing: a glimpse of the microbiology of the future. 2008.
107. Marttila H, Mäkinen J, Marjamäki M, Soini H. Prospective evaluation of pyrosequencing for the rapid detection of isoniazid and rifampin resistance in clinical *Mycobacterium tuberculosis* isolates. *Eur J Clin Microbiol Infect Dis*. 2009;**28**(1):33-8.
108. Bravo LTC, Tuohy MJ, Ang C, Destura RV, Mendoza M, Procop GW, et al. Pyrosequencing for rapid detection of *Mycobacterium tuberculosis* resistance to rifampin, isoniazid, and fluoroquinolones. *Journal of clinical microbiology*. 2009;**47**(12):3985-90.
109. Engstrom A, Morcillo N, Imperiale B, Hoffner SE, Jureen P. Detection of first- and second-line drug resistance in *Mycobacterium tuberculosis* clinical isolates by pyrosequencing. *J Clin Microbiol*. 2012;**50**(6):2026-33.

110. Thierry D, Brisson-Noël A, Vincent-Levy-Frebault V, Nguyen S, Guesdon J, Gicquel B. Characterization of a Mycobacterium tuberculosis insertion sequence, IS6110, and its application in diagnosis. *Journal of clinical microbiology*. 1990;**28**(12):2668-73.
111. Cave M, Yang Z, Stefanova R, Fomukong N, Ijaz K, Bates J, et al. Epidemiologic import of tuberculosis cases whose isolates have similar but not identical IS6110 restriction fragment length polymorphism patterns. *Journal of clinical microbiology*. 2005;**43**(3):1228-33.
112. Barnes PF, Cave MD. Molecular epidemiology of tuberculosis. *N Engl J Med*. 2003;**349**(12):1149-56.
113. Kamerbeek J, Schouls L, Kolk A, Van Agterveld M, Van Soolingen D, Kuijper S, et al. Simultaneous detection and strain differentiation of Mycobacterium tuberculosis for diagnosis and epidemiology. *Journal of clinical microbiology*. 1997;**35**(4):907-14.
114. Jafarian M, Aghali-Merza M, Farnia P, Ahmadi M, Masjedi MR, Velayati AA. Synchronous comparison of Mycobacterium tuberculosis epidemiology strains by “MIRU-VNTR” and “MIRU-VNTR and spoligotyping” technique. *Avicenna journal of medical biotechnology*. 2010;**2**(3):145.
115. Supply P, Allix C, Lesjean S, Cardoso-Oelemann M, Rüsche-Gerdes S, Willery E, et al. Proposal for standardization of optimized mycobacterial interspersed repetitive unit-variable-number tandem repeat typing of Mycobacterium tuberculosis. *Journal of clinical microbiology*. 2006;**44**(12):4498-510.
116. Cowan LS, Hooks DP, Christianson S, Sharma MK, Alexander DC, Guthrie JL, et al. Evaluation of Mycobacterial Interspersed Repetitive-Unit-Variable-Number Tandem-Repeat Genotyping as Performed in Laboratories in Canada, France, and the United States. *Journal of clinical microbiology*. 2012;**50**(5):1830-1.
117. Savine E, Warren RM, van der Spuy GD, Beyers N, van Helden PD, Locht C, et al. Stability of variable-number tandem repeats of mycobacterial interspersed repetitive units from 12 loci in serial isolates of Mycobacterium tuberculosis. *Journal of Clinical Microbiology*. 2002;**40**(12):4561-6.
118. Supply P, Lesjean S, Savine E, Kremer K, Van Soolingen D, Locht C. Automated high-throughput genotyping for study of global epidemiology of Mycobacterium tuberculosis based on mycobacterial interspersed repetitive units. *Journal of clinical microbiology*. 2001;**39**(10):3563-71.
119. Christianson S, Wolfe J, Orr P, Karlowicz J, Levett PN, Horsman GB, et al. Evaluation of 24 locus MIRU-VNTR genotyping of Mycobacterium tuberculosis isolates in Canada. *Tuberculosis*. 2010;**90**(1):31-8.
120. Christianson S, Wolfe J, Soualhine H, Sharma MK. Comparison of repetitive-sequence-based polymerase chain reaction with random amplified polymorphic DNA analysis for rapid genotyping of nontuberculosis mycobacteria. *Can J Microbiol*. 2012;**58**(8):953-64.
121. Weniger T, Krawczyk J, Supply P, Niemann S, Harmsen D. MIRU-VNTR plus: a web tool for polyphasic genotyping of Mycobacterium tuberculosis complex bacteria. *Nucleic Acids Res*. 2010;**38**(suppl_2):W326-W31.

122. Brudey K, Driscoll RJ, Rigouts L, Prodinger MW, Gori A, Al-Hajj AS. Mycobacterium tuberculosis complex genetic diversity: mining the fourth international spoligotyping database (SpolDB4) for classification, population genetics and epidemiology. *BMC Microbiology*. 2006;**6**:23.
123. Cohen KA, Abeel T, Manson McGuire A, Desjardins CA, Munsamy V, Shea TP, et al. Evolution of Extensively Drug-Resistant Tuberculosis over Four Decades: Whole Genome Sequencing and Dating Analysis of Mycobacterium tuberculosis Isolates from KwaZulu-Natal. *PLoS Med*. 2015;**12**(9):e1001880.
124. Malm S, Linguissi LS, Tekwu EM, Vouvongui JC, Kohl TA, Beckert P, et al. New Mycobacterium tuberculosis Complex Sublineage, Brazzaville, Congo. *Emerg Infect Dis*. 2017;**23**(3):423-9.
125. Hochheiser K, Kueh AJ, Gebhardt T, Herold MJ. CRISPR/Cas9: A tool for immunological research. *Eur J Immunol*. 2018;**48**(4):576-83.
126. Shapiro RS, Chavez A, Collins JJ. CRISPR-based genomic tools for the manipulation of genetically intractable microorganisms. *Nature Reviews Microbiology*. 2018:1.
127. Singh AK, Carette X, Potluri L-P, Sharp JD, Xu R, Priscic S, et al. Investigating essential gene function in Mycobacterium tuberculosis using an efficient CRISPR interference system. *Nucleic Acids Res*. 2016;**44**(18):e143-e.

Table 1. Specimen sources used for molecular epidemiology and mechanisms of drug resistance diagnosis across African countries: January 2007-December 2018.

Specimen source(s)	Number of studies(n)	Percent (%)	Total isolates	Percent (%)
Animal bronchial washes and human sputum	1	0.54	2	0.004
Biopsy specimens	1	0.54	56	0.10
Biopsy, lymph node aspirates and blood specimens	1	0.54	95	0.17
Cattle milk	1	0.54	11	0.02
Fine needle aspirates (FNA)	9	4.8	1095	1.96
Pleural, peritoneal and synovial fluids	1	0.54	59	0.11
Sputum	159	85.5	51419	91.94
Gastric lavage and sputum	4	2.2	232	0.42
Fine needle aspirates and sputum	7	3.8	2779	4.97
Sputum (induced), bronchial wash, bronchial aspirations, pleural fluid and gastric liquid	1	0.54	168	0.3
Tuberculous lesions from Cattle and buffaloes	1	0.54	8	0.014
Total	186	100%	55,924	100%

Table 2. *M. tuberculosis* molecular diagnostic methods used in Africa January 2007- December 2018

Phenotypic/Molecular diagnostic assays	Number of studies (n=186)	Percentage of studies (%)
Phenotypic assays		
Agar-dilution/modified proportion method on LJ	27	14.5
BACTEC MGIT 960 system	18	9.7
BacT/ALERT 3D/460 systems	6	3.2
MIC test/Sensititre MYCOTB plate (TREK Diagnostics, Cleveland, OH, USA)	2	1.1
Molecular assays		
Hain's (GenoType®MTBDR) line probe assay (LPA)	47	25.3
PCR and amplicon sequencing (Applied Biosystems ABI sequencers)	39	17.1
GeneXpertMTB/RIF assay	21	11.3
Whole genome sequencing	15	8.1

Figure 1. PRISMA –adapted flow diagram showed the results of the search and reasons for exclusion. Adapted from: Moher D, Liberati A, Tetzlaff J, Altman DG, The PRISMA Group (2009). Preferred Reporting Items for Systematic Reviews and Meta-Analyses: The PRISMA Statement. PLoS Med 6(7): e1000097. doi:10.1371/journal.pmed1000097.

Figure 2. Drug resistance rate and mechanisms of resistance (resistance determinants) of *M. tuberculosis* in Africa, January 2007 to December 2018. (A) Rate of resistance to any anti-TB drug in Africa. Total resistance rate (%) of *M. tuberculosis* isolates across African countries, calculated per total isolates in each country; (n=number of resistant isolates). (B) Anti-TB drug monoresistance per country in Africa. Each antibiotic's mono-resistance rate is calculated per total isolates in each country with known resistance profile (n=total number of isolates). (C) Total anti-TB drug monoresistance rate per antibiotic in Africa. The resistance rate of each antibiotic is calculated per total *M. tuberculosis* isolates with known resistance in Africa (n=number of resistant isolates per antibiotic). (D) Multidrug resistance rate (%) of *M. tuberculosis* across African countries; the number of MDR isolates is calculated per total isolates with known resistance in each country (n=number of MDR isolates). (E) Frequency of isolates with resistance mutations in each resistance gene per country in Africa.; the frequency of mutations per each gene is calculated from total isolates in each country (n=number of resistant isolates). (F) Rate (%) of genes having resistance-conferring mutations in African *M. tuberculosis* isolates; it is calculated by dividing isolates with resistance genes by all resistant isolates in Africa (n=number of isolates with particular gene mutation).

Figure 3: *M. tuberculosis* anti-TB drug resistance mutations across Africa, January 2007-December 2018. The frequencies of each mutation per gene in all isolates across Africa is shown in the image. (A) *M. tuberculosis rpoB* mutations with multiple occurrence in Africa. (B) Frequency of *rpoC* and multiple occurrence *katG* mutation in *M. tuberculosis* in Africa. (C) Frequency of mutations in *inhA* promoter, *fabG1-inhA*, *embB*, *embA* and *embC* genes in *M. tuberculosis* in Africa. (D) Frequency of mutations with multiple occurrence in *pncA* reported in *M. tuberculosis* in Africa. (E) Frequency of *rpsL* and multiple-occurring *gyrA/B* mutations in *M. tuberculosis* in Africa. (F) Frequency of *rrS*, *gidB*, *eis*, *ndh*, *ahpC* and *tlyA* gene mutations in *M. tuberculosis* in Africa.

Figure 4 (A and B): Frequency of resistance mutations in each resistance gene per total resistant isolates per country in Africa, January 2007-December 2018. Frequency of resistance mutations in *M. tuberculosis* in Burkina Faso (A), Botswana (B), Cameroon (C), Chad (D), Congo (E), Ivory Coast (F),

Egypt (G), Ethiopia (H), Gabon (I), Ghana (J), Guinea-Bissau (K), Morocco (M), Mozambique (N), Nigeria (O), Rwanda (P), and Swaziland (Q) are shown in 4A. Frequency of resistance mutations in respective genes in *M. tuberculosis* in Sierra Leone (R), South Africa (S, T, U and V), Sudan (W) Tanzania (X), Tunisia (Y), Uganda (Z), Zimbabwe (Aa) and Zambia (Ab) are also shown in B.

Figure 5: Frequency of resistance mutations associated with *M. tuberculosis* lineages/sublineage or families in Africa, January 2007-December 2018. Resistance mutation associated with *M. tb* Beijing family (A), Cameroon-type sublineage (B), CAS family (C), Congo-type sublineage (D), EuA-LAM (F), F15/LAM4/KZN, F28 and F28V strains (G), Ghana-type sublineage (H), Haarlem sublineage (I), KZN strains (J), LAM sublineage (K), *M.bovis* (M), R220 and R86 strains (N), Sierra Leone 1 and 2 sublineages (O), SIT954 and other STs (P), S-type sublineages (Q), T and TURK-type sublineages (R), Uganda-type sublineages (S), X-sublineages (T), and uncharacterized *M.tb* strains (U) are respectively shown per chart in the image.

Figure 6 (A and B): Frequency of *M. tuberculosis* lineages/sublineages or families in Africa, January 2007-December 2018. Frequency of *M. tuberculosis* lineages/sublineage in Algeria (A), Angola (B), Benin (C), Burkina Faso (D), Cameroon (E), Chad (F), Congo (G), Djibouti (H), Egypt (I), Ethiopia (J), Gabon (K), Ghana (L), Guinea (M), Guinea Bissau (N), Malawi (P), Mali (Q), Morocco (R), Mozambique (S), Nigeria (T), Rwanda (U), Sierra Leone (V), South Africa (W), Sudan (X), Tanzania (Y), Tunisia (Z), Uganda (Ab), Zambia (Ac), and Zimbabwe (Ad) are shown per chart in the image. The prevalence of each lineage/sublineage differed per country in 6A. 6B shows the distribution of the main lineages per country in Africa. Distinct colour codes depict the various lineages (1-8) with lineage 4 being most common in almost all countries, Lineage 5 and 6 being found in mainly West Africa, and Lineage 7 being reported in only Ethiopia.

Figure 7 (A-D): Phylogenomic relationship between *M. tuberculosis* isolates of African origin deposited at GenBank and PATRIC. Figures 7A and 7B comprise of both resistant and susceptible strains while Figures 7C and 7D comprise of only resistant strains. Strains from the same countries are given the same colour labels while those from the same clade and sub-clade are highlighted with the same colour to show their closer relationships. As can be seen, there was more intra-country dissemination and evolution than inter-country spread.

Figure S1: Frequency of *M. tuberculosis* Lineages/sub-lineages in Africa, January 2007-December 2018: Frequency of Indo-oceanic lineage/sub-lineages (A); Beijing sublineage (B); CAS-sublineage (C), Euro-

American lineage/sub-lineages (**D**); *M. africanum* West Africa I & II (**E**); *M. tuberculosis* Eth lineage 7 and sub-lineages (**F**); and proportion of each *M. tuberculosis* lineage in Africa (**G**).

Table S1: Distribution of *M. tuberculosis* complex strains, specimen source/s, genotyping method/s, molecular anti-TB drug resistance rate and resistance mechanisms in *M. tb* across African countries, January 2007 to December 2018

Table S2: Resistance mechanisms, molecular diagnosis method/s used, frequency and proportion of gene mutation per total resistant *M. tuberculosis* complex isolates across African countries, January 2007- December 2018

Table S3: Molecular antibiotics resistance rates and resistance mechanisms in *M. tuberculosis* complex across African countries, January 2007-December 2018.

Table S4: Frequency of gene mutation(s) and specific amino acid/nucleotide changes conferring antitubercular drug resistances across African countries January 2007- December 2018

Table S5: Distribution of specimen source/s, phenotypic DST method/s used, total number of isolates, and phenotypic antibiotics monoresistance rate, MDR and XDR rate of *M. tb* complex across African countries, January 2007- December 2018

Table S6: Distribution of genotypes/lineages/sub-lineages, frequency and patterns of antibiotics resistance-conferring mutations across African countries, January 2007- December 2018

Supplementary dataset 1: Metadata of *M. tuberculosis* isolates included in phylogenomic analyses.

Supplementary dataset 2: Country-by-country frequency of lineage and sub-lineage of *M. tuberculosis* in Africa: January 2007-December 2018

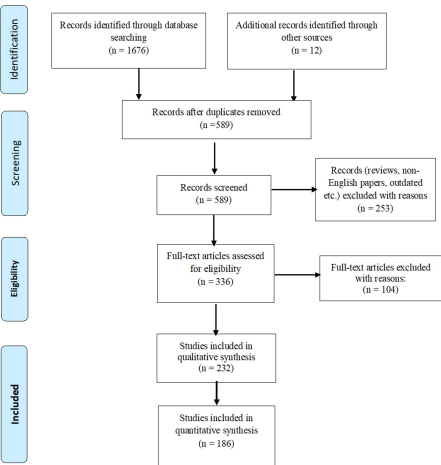
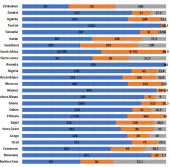
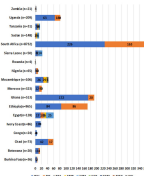


Figure 1. PRISMA –adapted flow diagram showed the results of the search and reasons for exclusion. Adapted from: Mober D, Liberati A, Tetzlaff J, Altman DG, The PRISMA Group (2009). Preferred Reporting Items for Systematic Reviews and Meta-Analyses: The PRISMA Statement. *PLoS Med* 6(7): e1000097. doi:10.1371/journal.pmed1000097.

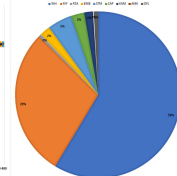
2A. Rate of resistance to any anti-TB drug in Africa, January 2007- December 2018



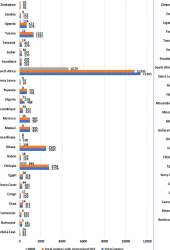
2B. Anti-TB drug monoresistance frequency across Africa Jan 2017-Dec 2018



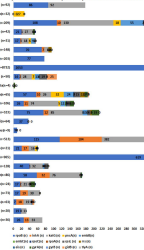
2C. ANTI-TB DRUG MONORESISTANCE RATE IN AFRICA: JAN 2017-DEC. 2018



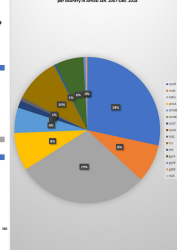
2D. Frequency of TB MDR in Africa: January 2007-December 2018



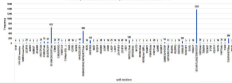
2E. Frequency of isolates with resistance mutations in each resistance gene per total resistant isolate per country in Africa: Jan. 2007-Dec. 2018



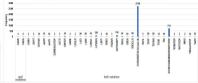
2F. Rate of isolates with resistance mutations in each resistance gene per country in Africa: Jan. 2007-Dec. 2018



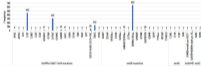
A. Frequency of mutations with multiple occurrence in *M. tb*, Africa, 2007-10



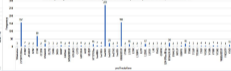
B. Frequency of *spoC* and multiple occurrence katG mutations in *M. tb*, Africa, 2007-10



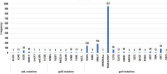
C. Frequency of mutations in *inhA* promoter, *rpoC*, *IsnA*, *embB*, *embA* and *embC* genes in *M. tb*, Africa, 2007-10



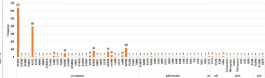
D. Frequency of mutations with multiple occurrence in *poa* reported in *M. tb*, Africa, 2007-10

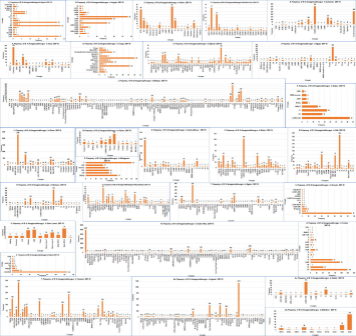


E. Frequency of *rpoB* and multiple occurring *gyrA* genes' mutations in *M. tb*, Africa, 2007-10



F. Frequency of *gyrB*, *nis*, *relB*, *phoC* and *spoA* gene mutations in *M. tb*, Africa, 2007-10







Color coding



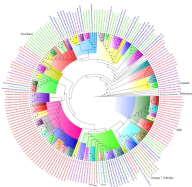
Europe

Europe

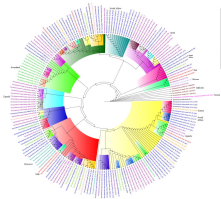
Australia

East

Europe 1 (Africa)



Cluster analysis



Chloroplast

