

PROBLEM BASED LEARNING APPLIED TO PRACTICE IN BRAZILIAN'S MEDICAL SCHOOL: A MINI-SYSTEMATIC REVIEW

Frederico Alberto Bussolaro¹; Claudine Thereza-Bussolaro²

¹ Federal University of Mato Grosso, Brazil

² University of Alberta, Canada

ABSTRACT

Background

Active learning is a well-established educational methodology in medical school worldwide. Although its implementation in Brazilian clinical settings is quite challenging. The objective of this study is to review the literature in a systematic manner to find and conduct a reflective analysis of how PBL has been applied in clinical teaching in Brazilian medicine schools.

Material & methods

A systematic literature search was conducted in three databases. A total of 250 papers related to PBL in Brazilian medical school were identified through the databases search. Four studies were finally selected for the review.

Results

Four fields of medicine were explored on the four selected papers: gynecology/family medicine, medical semiology, psychiatry, and pediatrics. Overall, all the papers reported some level of strategic adaptability of the original PBL methodology to better applied in the Brazilian medical school's curricula and country peculiar characteristics.

Conclusion

PBL application in Brazilian medical school suffers some level of alteration from the original format, to better adapted to the peculiarities of Brazilian students maturity, health system priorities and medical labor market.

KEYWORDS:

Active learning, problem-based learning, medical education, student-centered

INTRODUCTION

Problem Based learning, a constructivist method, was introduced to the medical curriculum in 1969 (1) to help students become effective solvers of biomedical problems and to foster attitudes leading to behavior as responsible physicians and scientists in their relation

NOTE: This preprint reports new research that has not been certified by peer review and should not be used to guide clinical practice.
to patients.

The constructivism view of learning has evolved since the primordia of its concept in 1960. The need for a more critical humanist, reflexive ethical health-related professionals, urged the tendency to "active" methods. The concept of an active methodology is that the student must be active during its learning process, meaning that books, slides, online presentations, and lectures are considered passive and non-constructivist venues of teaching. Whereas, interactive games, hands-on, and group discussion are classified as constructivist. I.e. Active venues. A systematic review(2) analyzed the effects of PBL in the future physician and conclude that PBL during medical school has a positive effect on physician competency.

Active learning, emphasize that knowledge cannot be transmitted but it need to be constructed.(3) The active methodology is world well spread by discovery-based learning methodology (DBL). The DBL is a keen methodology both in students and professors opinions.(2) DBL is a constructivist based approach in education, a "learn by doing" method in which student is provided with materials to find the answer.

Challenge in medicine is related to patient safety concern, operating room efficiency, and duty hour restrictions (3). The traditional apprentice-ship-style "see one, do one, teach one" is significant disadvantageous, in the nowadays pressure academic environment where research productivity, and clinical and operating room efficiency are prioritized over teaching time.(4)

Similarly challenging, PBL has a rigorous and highly structured practical teaching-learning process in which the student learn while trying to understanding or solving a problem.(5) PBL is structured in "problem, solution, practice, research, questioning, realism, originality and integration"(6), therefore its implementation in clinical settings requires more time, cost and training of teachers, and is affected not only by the educational aspects but for the unique priorities of health care environments as well.(7, 8)

Brazilian programs curricula abide the 2001 national guidelines for medical courses of the ministry of education. The guideline requires that 35% of the total workload of medical curricula is dedicated to clerkship during the last 2 years. Additionally, the guidelines requires that students be exposed to patients of different levels of clinical complexity, difficulty, and assistance. Therefore, the guideline strongly encourages the use of PBL and suggests that students see patients early on in the medical program.(9)

PBL methodology has been introduced to Brazilian medical school since 1997.(10) This study aims to review the literature in a systematic manner to find and conduct a reflective analysis about how PBL has been applied in clinical teaching in Brazilian medicine schools.

MATERIAL AND METHODS

This is a study based on the mini-systematic literature review on PBL methodology adopted in Brazilian's medical school.

Protocol and registration

This review followed as much as possible the preferred reporting items for systematic review and meta-analyses (PRISMA). We did not register the protocol of this review.

Eligibility Criteria

The identification of the studies was based on the research question: what field of medicine has been applying PBL methodology in medical schools located in Brazil?

Inclusion criteria

This review included retrospective and prospective studies concerning active learning, specifically PBL methodology adopted in medical schools in Brazil

Exclusion criteria

Review articles, and articles in which the methodology was applied to other field than medicine. Articles that did not present information related to the clinical applicability of the PBL methodology were excluded.

Search strategy

Electronic databases searched were Bireme, Medline and PsycINFO

The search approach was developed through consultation with medical professors and reviewing articles related to the topic. Appropriated keyword, truncation and word combinations were adapted.

Data search

Three databases were searched Lilacs, PsycInfo and Medline, plus a manual search were conducted on the reference list of included articles. Literature search was conducted in July 2nd 2019 on the words "PBL" OR "Problem based learning" AND "Brazil*" AND "medical school" OR "medicine". For the Lilacs search the words in Portuguese were added. A total of 250 papers were found as follow: LILACS: 113 papers; PSycInfo: 84 papers; Medline: 53 papers.

After duplicates removal a total of 238 were screened by title and abstract. Finally a number of four met our eligibility criteria. A Flowchart of the selection can be seen in figure 1.

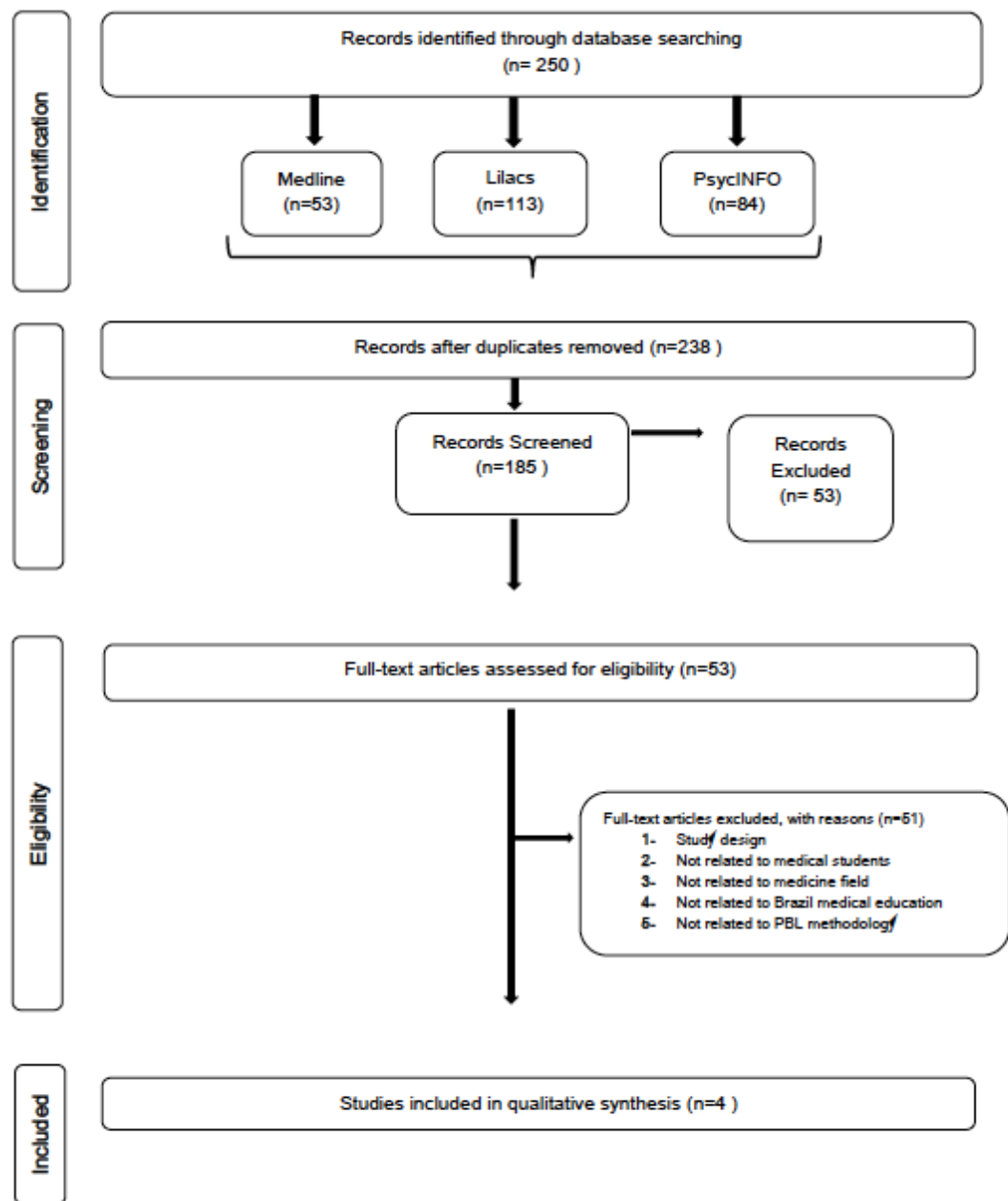


Figure 1 Flowchart of the review

Study selection and Eligibility

All abstracts identified during the database search were screened through by two independent reviewers (F.A.B. and C.T.B). Potentially relevant abstracts were then selected for full article independent evaluation by the same two reviewers. Any selection discrepancy was solved through discussion between the two reviewers.

Strategy for data extraction and selection

The main outcome was applicability of PBL as teaching methodology within the clinical setting in medicine. The organization of the results was based on the medicine clinical field.

RESULTS

A total of 250 papers were found after applying the inclusion and exclusion criteria 4 papers (10-13) were definitely selected for this review. A table 1 shows the summary of findings.

Author	Year	State(Brazil)	Field of application	Students (n)	years	Integrated practice	Objective
Paulin & Poças	2009	São Paulo	Psychiatric	80	5	yes	experience report
Mello Prado et al	2011	Pernambuco	Paediatric	72	5	yes	compare educational effectiveness of ward rounds conducted wit two different methodologies
Bestetti et al	2014	São Paulo	gynecology ,internal medicine, family physician	N/R	ar (8-10 semester)	yes	experience report
Dias-Lima et al	2019	Bahia	medical Semiology	N/R	and 3rd semester	yes	experience report

n. number; NR, Not reported;

Fields of application

4 fields of medicine were explored on the selected papers: gynecology/family medicine, medical semiology, psychiatry and pediatrics.

Gynecology and family medicine: the authors believe PBL is a worthwhile approach to teaching Brazilian medical students. (11) reported a coordinate mix (tutoring, medical skills and primary care) in which students are submitted to clinical and lab after the tutorial part of PBL at the end of the process, students are submitted to 124 patient's health problems.

Aggression and Defense Mechanism(Medical Semiology): the author Dias-Lima et al. (12), observed a positive impact in student training and interest in the subject taught.

Psychiatry: Paulin & Poças (10) an experience report about the implementation of PBL methodology to a psychiatry internship. The authors noticed improvement on the students' knowledge regarding psychiatry. Another observation was proper patient referral from former students who had been taught under the same methodology.

Paediatric Clinical teaching- ward round. The traditional methodology the students participate as mere onlookers, differently in the active methodology. As example we found Prado et al. (13) in which the active methodology was compared to traditional methodology as follow:

DISCUSSION

During our mini-systematic review, four studies reported the use of PBL methodology in the Brazilian Medical schools (10-13), in hospital, internships, and simulation labs.

It should be explained that PBL was introduced in Canada in an undergrad curriculum of three years rather than the traditionally four years.(1) The traditional four-year program has 4 weeks of break in summer time, while the three years PBL curriculum has only one month, therefore students have 112 weeks of academic activity plus 12 weeks of elective time as seen in figure 2. PBL has four phases:

- the first phase lasts 14 weeks and is dedicated to normal structure and function;
- the second phase has six weeks and is dedicated to abnormal biological mechanisms;
- Phase three has 40 weeks and is dedicated to abnormal structure and function;
- Phase IV is dedicated to the clerkships in four interchangeable blocks of: family medicine practice, surgery and psychiatry, pediatrics, and obstetrics and gynecology.

Through Phase I to Phase III students have also a horizontal program (one hour per day) dedicated to problems related to professional attitudes and ethics, abnormal behavior, biomedical statistics, epidemiology, and rehabilitation medicine. Furthermore, students have two six-week periods of elective experiences arranged by faculty members, and before entering the clerkship students have a week of clinical skills in history taking, examination, and planning of further investigation and treatment.

	JULY	AUG.	SEPT.	OCT.	NOV.	DEC.	JAN.	FEB.	MAR.	APR.	MAY	JUNE
YEAR I 1969-70	PRELIMINARY COURSE FOR 4-5 STUDENTS CELL BIOLOGY BIOCHEMISTRY BEHAVIOURAL SCIENCE			PHASE I			PHASE II				PHASE III (1)	
PRESCRIBED COURSE TIME - 40 WEEKS				14			6				20	
YEAR II 1970-71	H O L I D A Y		PHASE III (2)				REVISION	ELECTIVE	C L I N I C A L S K I L L S		PHASE IV CLERKSHIP	
PRESCRIBED COURSE TIME - 40 WEEKS			20				6				13	
YEAR III 1971-72		H O L I D A Y	PHASE IV CLERKSHIP *					PHASE IV CLERKSHIP *		REVISION	COUNCILS	GRADUATE
PRESCRIBED COURSE TIME - 32 WEEKS								32		5		

Figure 2 Outline of the three years undergrad medical curriculum proposed by McMaster University, including six weeks of elective time (retrieved from Spaulding, 1969, page 660)
(1)

Additionally, It should be stressed that the requirements for a student to be admitted to medical schools are different between Canada and Brazil. In Canada, the PBL program was proposed for students who already had at least three years of a background in behavioral science, biochemistry, and cell biology, students should have preferably completed a degree program. In Brazil, the requirement is to pass in an exam which evaluates student knowledge in four areas (languages, codes and related technologies) or various subjects as Portuguese, History, Geography, Maths, Physics, Chemistry and Biology and a written essay. Therefore the maturity and the academic background is different between students in the first year of medical school factors that can compromise the success of PBL in Brazilian Medical School.

The student's maturity issue among Brazilian students, has been observed. Accordingly (11), Brazilian medical students lack maturity and confidence to excel in a PBL approach, leading them to be anxious and insecure about their short-term learning in the context of a PBL methodology.(11)

Nonetheless, Brazilian medical school curriculum has been linked wherever possible the PBL methodology. Besteti et al. (11) relate the importance of cultural and structural context in implementing PBL in Brazilian medical school. In Brazil, the implementation of PBL methodology is said to be affected by the medical labor market, the health system, and not only by the educational aspect.(11)

Factors as time constraints, clinical flow, diversity of clinical problem impact teaching conditions.(8) Barrows, 1986 stated that PBL method requires more time, cost, and efforts for teacher compared to the lecture-based method. Accordingly, an effective PBL method requires a quality of tutorial skills, meaning that the teacher or tutor has to guide the students to consider all the steps in the reasoning of the problem, if this fails, the objectives of the PBL are compromised.(14) Another issue that can compromise the use of PBL in clinical teaching setting is that clinical teachers are always engaged in a dual process: clinical reasoning to care for patients, and educational reasoning to teach patients.(8)

Couto LB et al.(15), analyze Brazilian medical students perceptions of subject-matter expertise among PBL facilitators, and they conclude that PBL facilitator experts in the topic are essential to the learning process. Similarly, in Canada -the birth-place of PBL- studies (16-18) have shown that for the success of the PBL methodology, professor should be able to

facilitate groups and be knowledgeable about the content effectively, and at the same time students need to be willing to participate in peer teaching and be supportive of the group learning process. The health problems professors would have expertise in the field.(16-18)

The medical school initial proposed PBL curriculum program at McMaster University has also suffered adaptations since its first implementation over 30 years ago. They maintained the philosophy but changed the curriculum in 2005, implementing the COMPASS (Concept-oriented, multidisciplinary, problem-based, practice for transfer, simulations in clerkship, streaming). The major adaptations were in student evaluation, the role of the tutor, and the number and purpose of educational sessions.(17) Figure 3 shows the outline of the three-year COMPASS undergrad curriculum currently in place at McMaster University.

JAN	FEB	MAR	APR	MAY	JUNE	JULY	AUG	SEPT	OCT	NOV	DEC				
								Professional Competencies			ORIENTATION	MEDICAL FOUNDATIONS 1 INTRODUCTION TO DETERMINANTS OF HEALTH CARDIO/RESP/HEME		INTEGRATION	VACATION
								Professional Competencies							
MEDICAL FOUNDATIONS 3 HOMEOSTASIS II RENAL, ACID BASE, BP REPRODUCTION AND PREGNANCY GENETICS I		MEDICAL FOUNDATIONS 4 HOST DEFENSE NEOPLASIA GENETICS II		ELECTIVE		VACATION		MEDICAL FOUNDATIONS 5 MOVEMENT CONTROL INTERACTING AND COMMUNICATING		INTRO TO CLERKSHIP INTEGRATION	ELECTIVE	VACATION			
Professional Competencies								CLERKSHIP (2 weeks vacation sometime in June/July)				VACATION			
Professional Competencies															
ELECTIVE	CLERKSHIP											SYN1 + LMCC LECTURES			

Figure 3 Outline of the three-year COMPAS undergraduate MD curriculum retrieved from Neville & Norman, page 373(17)

In our review, we found that Bestetti (11) also related the importance of subject-matter expertise tutor to minimize time preparation and maximize students confidence. Additionally, they invest in courses and preparation of tutors, within the practice and theoretical content, in

the PBL methodology to overcome the because most teachers in Brazil are more familiar with the traditional lecture-based methodology instead of the student-center approach.

Dias-Lima, 2019,(12) reported a positive impact of in the student training part of their program. Although, their program has adapted the PBL method with ludic materials to integrating the apprenticeship of disciplines like microbiology, parasitology, immunology, and pathology in a clinical context. The drawback of the study is the absence of inclusion of patients in the discipline taught; they used video to simulate a clinical environment.

Similarly, Lucchetti et al. (2019)(19), describe the experience of active methodology, including simulation, to teach geriatrics and observed improvement in medical students knowledge, attitudes, and skills. Geriatrics is a very challenge area to teach in comparison to other areas where the presence of technology and procedures turns them into more attractive areas for students. Although the paper addressed the use of active methodology, it did not specify the use of PBL; therefore, it was excluded from our analyses.

In the pediatric field (13), researchers selected six patients from the emergency room three patients diagnosed with diarrhea and three with pneumonia. Seventy-two students were submitted to a test prior to access the patients, after that students participate in the academic round ward conducted by a staff member previously trained in both methodologies, TM (traditional method) and AM (active methodology). Lastly, students were submitted to a second cognitive test 48 hours after the ward wound. The authors concluded that AM showed better results on students' knowledge acquisition perception.

In Brazil, learning in the internship phase is made with hospitalized patients in hospital beds, basic units, specialized outpatient clinics, or emergency rooms. These situations usually require immediate care to the patient in the hospital, which limit studies and tutorial discussions. To eliminate or even clear some of the limitations, Paulin's studies(10) and Prado(13), demonstrated adaptations/models of hospital and outpatient care focused on learning with PBL, situations that need adaptations/modifications in the healthcare system that assists patients, allow the creation of moments for studies and discussion of cases without impairing the care of the patients, who needs immediate response. Both teachers and students need to adapt, either with a greater sense of responsibility in preparing with studies prior to care, aiming to reduce insecurities. Students increase the dedication to practices in laboratories/semiology activities; teachers widen the search to bring tools that allow students motivation. Teachers need to prepare and understand the new profile of these students, who are more questioning, due to the broad access to information by the internet, and from varied sources, not always scientific.

PBL in medical education has been presented, for the most part of studies as a prospect of improving the skills of physicians trained by this active methodology, although these studies have not shown a convincing improvement in the knowledge and performance gains of trained medical professionals using this methodology, compared to the traditional methods used in most Brazilian medical schools, until the end of the last century.

CONCLUSION

PBL application in Brazilian medical school suffers some level of alteration from the original format, to better adapted to the peculiarities of Brazilian students maturity, health system priorities, and medical labor market.

In Brazil, more studies in PBL methodology need to be conducted to evaluate the student knowledge acquisition through active learning methodology.

Reference List

1. Spaulding W. The undergraduate medical curriculum (1969 model): McMaster university. *Canadian Medical Association Journal*. 1969;100(14):659.
2. Koh GC-H, Khoo HE, Wong ML, Koh D. The effects of problem-based learning during medical school on physician competency: a systematic review. *Cmaj*. 2008;178(1):34-41.
3. Luc JG, Antonoff MB. Active learning in medical education: Application to the training of surgeons. *Journal of medical education and curricular development*. 2016;3:JMECD. S18929.
4. Graffam B. Active learning in medical education: Strategies for beginning implementation. [References]: *Medical Teacher*. Vol.29(1), 2007, pp. 38-42.; 2007.
5. Barrows HS, Tamblyn RM. *Problem-based learning: An approach to medical education*: Springer Publishing Company; 1980.
6. Tandogan RO, Orhan A. The Effects of Problem-Based Active Learning in Science Education on Students' Academic Achievement, Attitude and Concept Learning. *Online Submission*. 2007;3(1):71-81.
7. Schmidt HG, Rotgans JI, Yew EHJ. The process of problem-based learning: What works and why. [References]: *Medical Education*. Vol.45(8), 2011, pp. 792-806.; 2011.
8. Audetat M-C, Laurin S, Sanche G, Beique C, Fon NC, Blais J-G, et al. Clinical reasoning difficulties: A taxonomy for clinical teachers. [References]: *Medical Teacher*. Vol.35(3), 2013, pp. e984-e989.; 2013.

9. Bestetti RB, Couto LB, Restini CB, Faria M, Jr., Romao GS. Assessment test before the reporting phase of tutorial session in problem-based learning. *Advances in Medical Education & Practice*. 2017;8:181-7.
10. Paulin LFRdS, Pocas RCG. The experience of Universidade Sao Francisco with the medical internship in psychiatry using the problem-based learning method. [Portuguese]. [References]: *Trends in Psychiatry and Psychotherapy*. Vol.31(1), 2009, pp. 67-72.; 2009.
11. Bestetti RB, Couto LB, Romão GS, Araújo GT, Restini CBA. Contextual considerations in implementing problem-based learning approaches in a Brazilian medical curriculum: the UNAERP experience. *Med Educ Online*. 2014;19:24366-.
12. Dias-Lima A, Silva MdC, Ribeiro LCV, Bendicho MT, Guedes HTV, Lemaire DC. Avaliação, Ensino e Metodologias Ativas: uma Experiência Vivenciada no Componente Curricular Mecanismos de Agressão e de Defesa, no curso de Medicina da Universidade do Estado da Bahia, Brasil. *Rev bras educ méd*. 2019;43(2):216-24.
13. Melo Prado H, Hanois Falbo G, Falbo AR, Figueiroa JN. Active learning on the ward: Outcomes from a comparative trial with traditional methods. [References]: *Medical Education*. Vol.45(3), 2011, pp. 273-279.; 2011.
14. Barrows HS. A taxonomy of problem-based learning methods. *Medical education*. 1986;20(6):481-6.
15. Couto LB, Bestetti RB, Restini CB, Faria M, Jr., Romao GS. Brazilian medical students' perceptions of expert versus non-expert facilitators in a (non) problem-based learning environment. *Medical Education Online*. 2015;20(26893).
16. Cunningham CE, Deal K, Neville A, Rimas H, Lohfeld L. Modeling the problem-based learning preferences of McMaster University undergraduate medical students using a discrete choice conjoint experiment. *Advances in Health Sciences Education*. 2006;11(3):245-66.
17. Neville AJ, Norman GR. PBL in the undergraduate MD program at McMaster University: three iterations in three decades. *Academic Medicine*. 2007;82(4):370-4.
18. Lohfeld L, Neville A, Norman G. PBL in undergraduate medical education: a qualitative study of the views of Canadian residents. *Advances in Health Sciences Education*. 2005;10(3):189-214.
19. Lucchetti AL, Duarte BS, de Assis TV, Laurindo BO, Lucchetti G. Is it possible to teach Geriatric Medicine in a stimulating way? Measuring the effect of active learning activities in Brazilian medical students. *Australasian journal on ageing*. 2019.